

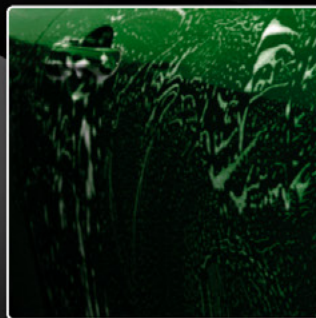
Auto Magic

Professional Car Care®

PRODUCT CATALOG



Wheels/Tires



Exterior Surfaces



Interior Surfaces



Engine Bays



SOAPS

Wash, Lather & Rinse

Soaps · High-foam

No. 35 E-Z Suds™



- High-foam enhancers
- Long-lasting suds
- Minimize hard water
- Rinses easily

Use On:

- Car exteriors

Sizes:

- 35:** 1 Gallon
- 35-5:** 5 Gallon
- 35-55:** 55 Gallon

No. 36 Cherry Bubbles®



- Super concentrated
- pH-balanced
- Long-lasting foam
- Cherry scent

Use On:

- Car exteriors
- Tunnel wash

Sizes:

- 36A:** 16 oz.
- 36-5:** 5 Gallon
- 36-55:** 55 Gallon

No. 56 Wash & Wax



- Thick lather shampoo
- Leaves a glossy shine
- Rinses easily

Use On:

- Car exteriors

Sizes:

- 56A:** 16 oz.
- 56:** 1 Gallon
- 56-5:** 5 Gallon
- 56-55:** 55 Gallon

No. ENC56 Econo Wash & Wax



- Economical shampoo
- Rinses easily

Use On:

- Car exteriors

Sizes:

- ENC56-5:** 5 Gallon
- ENC56-55:** 55 Gallon

Accessories

No. 00005 Dual Ended Detail Brush



- Detail the smallest areas

No. 00015 Short Solid Plastic Handle



- Nylon Fill
- All-purpose
- 2 in. nylon bristles
- Super soft

No. 00334 5 ft. Wood Shaft Handle with Metal Tip



- Nylon Fill
- Use with #00413

No. 00012 Synthetic Wash Mitt



- Soft and absorbent
- 9 x 7 inches

No. 00023 Do-All Scrubber



- Multi-purpose cleaning
- 3 x 3 x 5 inches

No. 00413 10 in. Car/Truck Wash Brush



- Blue flagged styrene
- 3 in. bristles
- Use with #00334
- Reach hard-to-reach spots



CLEANERS & DEGREASERS

Dilute, Dissolve & Remove

Interior

No. 8B E-Z Clean-HD™



- Ultra-concentrated
 - Upholstery shampoo
- Use On:**
- Cloth, velour, carpet & vinyl

Sizes:

8B: 1 Gallon
8B-5: 5 Gallon

No. 21 Fabric & Carpet Cleaner



- Low-foaming
 - Heavy-duty
 - No residue
 - Can be used as pre-spot
- Use In:**
- Hot or cold water extraction machines

Sizes:

21: 1 Gallon
21-5: 5 Gallon

No. 57 Vinyl/Leather Cleaner



- Mild cleaner
 - pH-balanced
 - Quickly removes stains
- Use On:**
- Vinyl and leather

Size:

57: 1 Gallon

Exterior

No. 5 Motor Degreaser



- Heavy-duty cleaner
 - Effortlessly dissolves oil, grease & grime in minutes
 - Phosphate-free
- Use On:**
- Engines

Sizes:

5: 1 Gallon
5-5: 5 Gallon
5-55: 55 Gallon

No. 48 MAGnificent®



- High-suds wheel cleaner
 - Non-acidic
 - Concentrated
- Use On:**
- Coated, chrome, painted, wire, plastic, & stainless steel wheels
 - Whitewalls

Sizes:

48: 1 Gallon
48-5: 5 Gallon
48-55: 55 Gallon

No. 66 Spoke®



- Heavy-duty cleaner
 - Acid-based
 - Removes road tar, film, rust & grime
- Use On:**
- Chrome and wire wheels

Sizes:

66: 1 Gallon
66-5: 5 Gallon
66-55: 55 Gallon

No. 727 XP Citrus Wheel Cleaner™



- Extra performance
 - Non-acidic
 - Concentrated
 - Cuts through brake dust and road grime
 - Rinses easily, no residue
- Use On:**
- Chrome and clearcoated alloy wheels

Sizes:

727: 1 Gallon

No. 502500 Wheel Magic®



- Removes road film and brake dust from wheels
 - Foaming action
 - Acid-free
- Use On:**
- Wheels and tires

Sizes:

502500: 1 Gallon
502505: 5 Gallon
502555: 55 Gallon

All-Purpose

No. 43 Clear Difference®



- Ready-to-use
 - Glass cleaner
 - Grime fighting
 - Streak-free performance
 - Fast drying
 - No hazy residue
- Use On:**
- Mirrors and chrome

Sizes:

43: 1 Gallon
43-5: 5 Gallon
43-55: 55 Gallon

No. 46 Glass Cleaner Concentrate



- Glass cleaner
 - Interior and exterior
 - Wipes off easily
 - Sparkling clean
- Use On:**
- Windows and mirrors
 - Chrome

Sizes:

46: 1 Gallon

No. 51 Red Hot®



- Heavy-duty
 - All-purpose
 - Concentrated cleaner
 - Cinnamon scent
- Use On:**
- Carpet, vinyl, plastic, fabric, upholstery, engines, wheels & tires

Sizes:

51: 1 Gallon
51-5: 5 Gallon
51-55: 55 Gallon

No. 713 Special Cleaner™



- Cleaner and degreaser
 - Safe on most interior and exterior surfaces
 - Phosphate-free
 - Eliminates stains and dirt
- Use On:**
- Carpets, fabrics, vinyl, engines, tires, wheels, fender wells & more

Sizes:

713A: 16 oz. - RTU*
713: 1 Gallon
713-5: 5 Gallon
713-55: 55 Gallon

No. 737 XP Citrus™



- Water-based
 - Safe on most interior and exterior surfaces
 - Concentrated pH-balanced
 - Removes dirt and grime
 - Citrus scent
- Use On:**
- Carpets, fabrics, vinyl, engines, tires & more

Sizes:

737: 1 Gallon
737-5: 5 Gallon

No. 777 XP Triple Seven™



- Concentrated cleaner
 - All-purpose
 - Remove dirt and grime
 - Black cherry scent
- Use On:**
- Carpets, fabrics, vinyl, engines, tires, wheels, fender wells & more

Sizes:

777: 1 Gallon
777-5: 5 Gallon
777-55: 55 Gallon



INTERIOR & EXTERIOR DRESSINGS

Restore, Recondition & Renew

Dressings · Water-Based

No. 41 Body Shop Dress-It®



- Silicone-free
 - Deepen color
 - Enhance luster
 - Classic finished look
 - Instant gloss to vinyl, rubber & plastic
 - Ready-to-use
- Use On:**
- Tires

Sizes:

- 41:** 1 Gallon
41-5: 5 Gallon
41-55: 55 Gallon

No. 58 Leather Conditioner



- Lanolin-based conditioner
 - Penetrates quickly
 - Restore suppleness, gloss and texture
 - Leather scent
 - Quick drying
- Use On:**
- Leather interiors

Sizes:

- 58-QT:** 32 oz.
58: 1 Gallon

No. 60 XP Cool Blue™



- Disperses water efficiently
 - Shine and durability of any solvent-based dressing
 - Safe on interior & exterior
- Use On:**
- Moldings, tires, vinyl & bumper covers

Sizes:

- 60:** 1 Gallon
60-5: 5 Gallon
60-55: 55 Gallon

No. 61 Xtreme Dress-It®



- Thickest dressing
 - Silicone-based
 - High gloss
 - Banana Scent
- Use On:**
- Tires, exterior molding, rubber & vinyl trim
 - Interior surfaces

Sizes:

- 61:** 1 Gallon
61-5: 5 Gallon
61-55: 55 Gallon

No. 62 Universal Dressing™



- Silicone-based
 - Safe on all nonporous interior and exterior
- Use On:**
- Vinyl, rubber & plastic
 - Engine dressing

Sizes:

- 62:** 1 Gallon
62-5: 5 Gallon
62-55: 55 Gallon

No. 65 Super Dress-It®



- All-purpose silicone dressing
 - Interiors, exteriors & engines
 - Restore original beauty
- Use On:**
- Vinyl upholstery and trim, dashboards, air vents, tires, rubber moldings, vinyl tops, hoses & more

Sizes:

- 65A:** 16 oz.
65: 1 Gallon
65-5: 5 Gallon
65-55: 55 Gallon

No. 501490 Cool Dress-It®



- Silicone-based
 - Durable
 - Stain resistant
 - Safe on interior & exterior
- Use On:**
- Tires and rubber moldings
 - Vinyl upholstery, dashboards, air vents & more

Sizes:

- 501490:** 1 Gallon
501491: 5 Gallon
501495: 55 Gallon

Dressings · Solvent-Based

No. 30 Clear Shine®



- Silicone-free
 - Excellent gloss finish
 - Extended durability
- Use On:**
- Tires, rubber moldings, trim, unpainted rubber bumpers & fender wells

Sizes:

30: 1 Gallon
30-5: 5 Gallon

No. 32 Super Shine™



- High gloss
 - Wet look finish
- Use On:**
- Tires, rubber moldings, & vinyl trim

Sizes:

32-5: 5 Gallon
32-55: 55 Gallon

No. 33 Magic Dressing®



- Long-lasting
 - High gloss
 - Weather-resistant
- Use On:**
- Vinyl upholstery, tires, rubber moldings, exterior trim & more

Sizes:

33A: 16 oz.
33: 1 Gallon
33-5: 5 Gallon
33-55: 55 Gallon

No. 67-QT Bumper Magic®



- Long-lasting
 - Ready-to-use
 - Restores faded surfaces
- Use On:**
- Body side moldings, vinyl trim, & hard rubber bumpers

Size:

67-QT: 32 oz.

No. 68-5 Almost Magic®



- Economical
 - Silicone-based
 - Weather-resistant
 - Long-lasting finish
- Use On:**
- Tires, rubber moldings, & exterior trim

Size:

68-5: 5 Gallon

No. 502220 VOC Magic Dressing®



- Rich glossy finish
 - Long-lasting
- Use On:**
- Tires, moldings, & vinyl trim

Sizes:

502220: 1 Gallon
502225: 5 Gallon



EXTERIOR DETAILING

Protect, Seal & Shine

Waxes

No. 15 E-Z Wax Paste®



- Easy to use
- Yellow carnauba paste wax
- Produces a wet look
- Excellent durability
- Final finish wax

Use On:
· All paint finishes

Abrasive Meter: 0



Size:

15: 13 oz.

No. 22 Strawberry Wet Wax®



- Premium carnauba cream
- Deep high gloss
- Long-lasting
- Strawberry scent

Use On:
· Clearcoat
· Conventional paint

Abrasive Meter: 0



Sizes:

**22A: 16 oz.
22: 1 Gallon**

No. 24 Purple Blaze®



- Quick-flash carnauba
- Adds gloss
- Brightens paint
- Express detailing
- Grape scent

Use On:
· All paint finishes

Abrasive Meter: 0



Size:

24: 1 Gallon

No. 73 Banana Magic™



- Final step cream wax
- High gloss and rich luster
- Low dusting and high durability
- Banana scent

Use On:
· All paint finishes

Abrasive Meter: 1



Sizes:

**73A: 16 oz.
73: 1 Gallon**

No. 75 White Magic®



- Cutting power of polish
- Shine and durability of paste wax

Use On:
· Clearcoat
· Conventional paint

Abrasive Meter: 6



Sizes:

**75A: 16 oz.
75: 1 Gallon**

No. 89 XP Express Wax™



- Advanced silicone and carnauba wax blend
- Enhance shine and depth
- Low dusting
- Easy-on, easy-off formula
- No white-out

Use On:
· All paint finishes

Abrasive Meter: 1



Size:

89: 1 Gallon

No. 96 Watermelon Magic Mist™



- Instant gloss
- Carnauba spray wax
- Between regular waxing
- Remove light dust, finger prints & smudges

Use On:
· All paint finishes

Abrasive Meter: 1



Sizes:

**96: 1 Gallon
96-5: 5 Gallon**

Polymer Paint Sealant

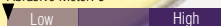
No. 10-QT Paint Sealant



- Non-abrasive polymer paint sealant
- Quick dry formula
- Long-lasting gloss
- Protect against environmental attack
- Maximum Durability

Use On:
· All paint finishes

Abrasive Meter: 0



Size:

10-QT: 32 oz.

Glazes

No. 50 New Car Glaze™

- Finishing polish
- Fills surface scratches
- Removes paint imperfections
- Clearcoat safe

Use On:

- All paint finishes



Abrasive Meter: 7



Sizes:

50: 1 Gallon

No. 503010 Surface Magic®

- Thick-bodied & low dusting
- Aggressive machine glaze
- Removes compound swirls, wet sanding marks & moderate oxidation
- Silicone and wax free

Use On:

- All paint finishes



Abrasive Meter: 6



Size:

503010: 32 oz.

No. 503020 Foam Finish®

- Fast working and low dusting
- Finessing glaze
- Removes swirl marks
- Silicone and wax free
- Ideal for darker colors

Use On:

- All paint finishes



Abrasive Meter: 2



Size:

503020: 32 oz.

No. 503030 Black Finishing Glaze®

- Dual-purpose finessing glaze
- Removes swirls and scratches
- Fast working and low dusting
- High gloss final finish with UV protection
- Silicone and wax free

Use On:

- Dark color paint finishes



Abrasive Meter: 5



Size:

503030: 32 oz.

Polishes

No. 76 GS-1™

- Color and gloss restorer
- Revive lightly oxidized paint
- Removes medium scratches
- Clearcoat safe

Use On:

- All paint finishes



Abrasive Meter: 7



Sizes:

76A: 16 oz.

76: 1 Gallon

No. 77 BC-1™

- Base/clearcoat cleaner
- Removes oxidation
- Fills surface scratches
- Removes paint imperfections

Use On:

- Clearcoat
- Conventional paint



Abrasive Meter: 7



Sizes:

77A: 16 oz.

77: 1 Gallon

No. 78 BC-2®

- Premium polish and wax
- Removes light scratches
- Long-lasting high gloss

Use On:

- All paint finishes



Abrasive Meter: 3



Sizes:

78A: 16 oz.

78: 1 Gallon

No. 88 XP Polish™

- Moderately aggressive
- Eliminate wash scratches & light to medium oxidation
- Polymer blend increases durability

Use On:

- All paint finishes



Abrasive Meter: 8



Sizes:

88A: 16 oz.

88: 1 Gallon

No. 90 XP Swirl Remover™

- Mild abrasive formula
- Leveling wax
- Flatten out swirls
- High shine, wet look finish

Use On:

- All paint finishes



Abrasive Meter: 3



Sizes:

90: 1 Gallon

No. 501321 Compound Polish

- Very fast and easy
- Level paint imperfections
- Rich color & high gloss finish
- Little swirl

Use On:

- All paint finishes



Abrasive Meter: 9



Sizes:

501320: 32 oz.

501321: 1 Gallon

Polymer Finishing Products

No. 63-QT Poly Magic™

- Static resistant
- UV protection
- Long-lasting shine

Use On:

- Wet or dry exterior surfaces



Abrasive Meter: 0



Size:

63-QT: 32 oz.

No. 69-QT Hydro Shine®

- Express polymer spray
- Lasting quick shine
- No blushing or whitening
- Enhances rubber side, molding & trim

Use On:

- Wet exterior surfaces



*Polymer/Sealant

Abrasive Meter: 1



Size:

69-QT: 32 oz.

No. 70 Seal-It®

- Non-abrasive, high gloss
- Fast-dry formula
- Quick hazing, rich shine
- Long-lasting protection
- Great for chrome

Use On:

- All paint finishes



Abrasive Meter: 0



Sizes:

70A: 16 oz.
70: 1 Gallon

No. 79 Awesome Gloss™

- Non-abrasive, high gloss
- Maximum durability
- Goes on like wax
- Lasts like a sealant

Use On:

- All paint finishes



Abrasive Meter: 1



Sizes:

79A: 16 oz.
79: 1 Gallon

Compounds

No. 87 XP Compound™



- Aggressive leveling
- Low swirling
- Remove paint imperfections
- Remove acid rain spots, oxidation, & scratches

Use On:

- All paint finishes

Abrasive Meter: 10



Sizes:

87A: 16 oz.
87: 1 Gallon

No. 99 XP Magic Cut®



- Very fast and easy
- Level paint imperfections
- Rich, high gloss finish
- Little swirl

Use On:

- All paint finishes

Abrasive Meter: 10



Sizes:

99-QT: 32 oz.
99: 1 Gallon

No. 110 Power Cut Plus®



- Fast-cutting compound
- Remove heavy oxidation, acid rain & scratches

Use On:

- Clearcoat
- Conventional Paint

Abrasive Meter: 8



Sizes:

110A: 16 oz.
110: 1 Gallon

PC 123 · 3 Step Process

No. 501201 PC-1™



Extra Cut Compound

- High-gloss and low-dust finish
- Versatile with industry equipment
- Rapidly remove 1500 grit sand scratches and finer

Use On:

- All paint finishes

Use With:

- 710600 White Cutting Pad

Abrasive Meter: 9



Sizes:

501201: 1.0 liter
710600: White Foam Cutting Pad

No. 501202 PC-2™



Advanced Diminishing Compound

- Removes any residue or swirls left from step one
- Rapidly removes 3000 grit sand scratches
- Produces rich color depth
- High-gloss and swirl-free

Use On:

- All paint finishes

Use With:

- 710700 Burgundy Polishing Pad

Abrasive Meter: 6



Sizes:

501202: 1.0 liter
710700: Burgundy Foam Polishing Pad

No. 501203 PC-3™



Final Finishing Product

- Revives paint
- Adds intense color depth
- Extra high-gloss finish

Use On:

- All paint finishes

Use With:

- 710800 Black Finishing Pad

Abrasive Meter: 1



Sizes:

501203: 1.0 liter
710800: Black Foam Finishing Pad



APPLICATORS

Wash, Buff & Polish

Buffing Pads

No. 710100 White Wool Heavy Compound Pad



- Perfect Finish white wool
- Heavy
- 7.5 x 1.5 inches

No. 710102 White Waffle Foam Heavy Compound Pad



- Perfect Finish white waffle
- Heavy
- 7.5 x 1.5 inches

No. 710300 Black Waffle Foam Finishing Pad



- Perfect Finish black waffle
- Finishing
- 7.5 x 1.5 inches

No. 710501 152 mm. Backing Plate - Metric



- 14 mm. threads

No. 710101 Yellow Wool Medium Compound Pad



- Perfect Finish yellow wool
- Wool/Acrylic Blend
- Medium
- 7.5 x 1.5 inches

No. 710200 Green Waffle Foam Polishing Pad



- Perfect Finish green waffle
- Polishing
- 7.5 x 1.5 inches

No. 710500 6 in. Backing Plate - U.S.



- 5/8 x 11 inches

No. PC 123 Foam Pads



- 710600 - White Foam Cutting Pad
- 710700 - Burgundy Foam Polishing Pad
- 710800 - Black Foam Finishing Pad

Sponges, Mitts, Pads & Towels

No. 00012 Synthetic Wash Mitt



- Soft and absorbent
- 9 x 7 inches

No. 00070 Round Foam Wax Pad Applicator



- 4 inches round

No. 00249 Yellow Microfiber Towel



- Lint-free
- Best way to dry your vehicle by hand
- 16 x 16 inches

No. 00023 Do-All Scrubber



- Multi-purpose cleaning
- 3 x 3 x 5 inches

No. 00247 Blue Microfiber Towel



- Lint-free
- Best way to dry your vehicle by hand
- 16 x 16 inches



SPECIALTY ITEMS

Specifically Formulated

Specialty Products

No. 25 Enzyme Pre-Spot



- Attaches to protein-based stains and devours them
- Tough on food, grass, soil, blood & pet smells
- Use On:**
- Carpet, fabric & upholstery

Size:

25: 1 Gallon

No. 37 Odor Eliminator



- Control stubborn odors
- Use On:**
- Carpets and fabrics

Size:

37: 1 Gallon

No. 38 Vinyl Coating



- Durable plastic coating
- Resists fade, crack, chip
- Use On:**
- Automobile tops, interiors trim panels & body moldings

Sizes:

38-5: 5 Gallon
38-55: 55 Gallon

No. 38-02 Black Vinyl Coating



- Durable plastic coating
- Will not fade, crack, or chip
- Use On:**
- Automobile tops, interiors, trim panels & body moldings

Sizes:

38-02: 16 oz.

No. 47 E-Z Beads®



- Add shine and beading
- Can be used as a tunnel rinse or an express wax
- Use On:**
- Paint, glass, chrome, & trim

Sizes:

47-5: 5 Gallon
47-55: 55 Gallon

No. 49 Body Shine®



- Quick detail product
- Removes smudges, fingerprints, buffing residue & light dirt
- Great for maintaining showroom finish
- Use On:**
- Paint, glass, chrome, & vinyl trim

Sizes:

49A: 16 oz.
49: 1 Gallon
49-5: 5 Gallon
49-55: 55 Gallon

**Recommended as a Clay Magic Lubricant*

No. 502050 Lubri-Shine®



- Silicone-free lubricant
- Removes compound dust and refinishing residues
- Remove smudges, finger prints & smears
- Use On:**
- All paint finishes

**Recommended as a Clay Magic Lubricant*

Size:

502050: 1 Gallon

No. TM101 Tornado Magic®



- Ready-to-use
- No residue
- Fresh clean scent
- Use On:**
- All paint finishes

Sizes:

TM101: 1 Gallon
TM101-5: 5 Gallon
TM101-55: 55 Gallon

Solvents & Removers

No. 40 Multi-Purpose



- Versatile product
 - Thins, disperses and dissolves organic materials
- Use On:**
- All paint finishes

Sizes:

- 40:** 1 Gallon
40-5: 5 Gallon

No. 53 Fallout Remover



- Remove stubborn contaminants
 - Eliminate environmental fallout and rail dust from exterior surfaces
- Use On:**
- All paint finishes

Sizes:

- 53-5:** 5 Gallon
53-55: 55 Gallon

No. 600 Water Spot Remover



- Acid-based cleaner
 - Quickly remove hard water spotting and surface acid rain
- Use On:**
- Glass, chrome, & painted surfaces

Sizes:

- 600:** 1 Gallon
600-5: 5 Gallon

No. 620 Bug Remover



- Easily remove tough insect residue
 - Phosphate-free
- Use On:**
- Glass, chrome, trim & painted surfaces

Sizes:

- 620:** 1 Gallon
620-5: 5 Gallon

No. 716 Tar Solvent



- Safe and effective
 - Remove heavy tar deposits, grease & gum
- Use On:**
- Clearcoat paint, plastic trim, rubber moldings & chrome

Size:

- 716:** 1 Gallon



AEROSOLS

Spray, Protect & Enhance



Product	Size	Detail
No. S731 Fabric Cleaner Plus	18 oz.	<ul style="list-style-type: none"> Gently foam away soil, dirt & stains from velour, cloth, carpet, & vinyl Leaves the surface clean and dry Pleasant mint scent
No. 61-S Power Foam™	18 oz.	<ul style="list-style-type: none"> Contains ammonia and special foaming agents to instantly loosen and remove grease and dirt Excellent for velor, carpet, fabric, vinyl & plastic surfaces
No. 90-S Rubberized Undercoating	16 oz.	<ul style="list-style-type: none"> Ideal protection for coating fender replacements, new panels, section repairs & weld joints Covers water leaks and cracks as well as resists salt corrosion
No. 92-S Orange Citrus Cleaner	19 oz.	<ul style="list-style-type: none"> All-purpose cleaner formulated to remove dirt from glass, chrome, vinyl, plastic & rubber Works great on soot, grease, smoke film, oil, light carbon, dust, lipstick & crayon marks
No. 59-S-TIP Quick Shine™	11 oz.	<ul style="list-style-type: none"> Quick dressing for hard to reach areas Excellent on vinyl tops and tires Misting spray tip
No. 59-S Quick Shine™	11 oz.	<ul style="list-style-type: none"> Quick dressing for hard to reach areas Excellent on vinyl tops and tires
No. S936 Instant Shine	11 oz.	<ul style="list-style-type: none"> Silicone-based coating with long-lasting shine Great for interiors and exteriors
No. 93-S Fabric & Upholstery Spotter	18 oz.	<ul style="list-style-type: none"> Powerful carpet stain and spot remover Leaves no residue and contains no solvents
No. 82-S Interior Detailer	12 oz.	<ul style="list-style-type: none"> Enhance and recondition the appearance of dashboards, vents, moldings, & consoles Quick-dry matte finish with fresh scent that is greaseless and streakless
No. 80-S Xpress Detailer	16 oz.	<ul style="list-style-type: none"> Perfect final finish quick detail spray for paint, chrome, wheels, tires, plastic, rubber & glass Easily removes fingerprints, smudges, road grim, rain film & other light contaminants
No. 60-S Glass Cleaner	19 oz.	<ul style="list-style-type: none"> Quickest cleaning of glass, chrome, plastics & some vinyl surfaces Removes lipstick, bugs, ink, oil & grease Wax free
No. S50 Sprayway Glass Cleaner	19 oz.	<ul style="list-style-type: none"> Ammonia free, spray and wipe glass cleaner Great for windows, mirrors, & windshields

Paints & Dyes

Motor Paints



- Tough, durable, & heat-resistant finish
- California/OTC VOC compliant

Colors: **12 oz. Cans**

- 00241:** Black Semi-Gloss
- 20-2:** Gloss Black
- 00294:** Trim Paint

Vinyl & Carpet Dyes



- Restore automotive carpet, vinyl & plastic
- Computer matched to OEM standards
- All dyes are California/OTC VOC compliant

Colors: **12 oz. Cans**

- 00245:** Beige
- 00267:** Dove Gray
- 00268:** Light Gray
- 00272:** Gray
- 00274:** Dark Gray
- 00277:** Charcoal Gray
- 00279:** Black



ACCESSORIES

Scrub, Dispense & Detail

Brushes & Miscellaneous

No. 00005 Dual Ended Detail Brush



- Detail the smallest areas

No. 00413 10 in. Car/Truck Wash Brush



- Blue flagged styrene
- 3 in. bristles
- Use with #00334
- Reach hard-to-reach spots

No. 231 Auto Magic Floor Mat



- Water-resistant

No. 00015 Short Solid Plastic Handle



- Nylon fill
- All-purpose
- Short handled
- 2 in. nylon bristles

No. 00334 5 ft. Wood Shaft Handle with Metal Tip



- Nylon Fill
- Use with #00413

No. 1010 Synthetic Drying Cloth



- Dry quickly and easily

Bottles & Triggers

No. 2000-L-20 HDPE Safety Bottle



- 32 oz.

No. 1003-KIT Polish Dispenser



- Bottle and Cap
- 12 oz.

No. 00064 Gray Sprayer



- Chemical-resistant

No. 720065 White Foaming Trigger



- Helps products foam up



DETAILING CLAY

Polish & Wax

Clay Magic · Clay Bars

No. CM1200 Clay Magic Medium Grade



- Deep cleans
- Removes contaminants like tree sap, insect residue, paint overspray, road tar, rail dust & stubborn dirt
- Makes finish super clean and smooth

Use On:
· All surfaces

Size:

200 gram bar

No. CM2200 Clay Magic Fine Grade



- Deep cleans
- Removes contaminants like tree sap, insect residue, paint overspray, road tar, rail dust & stubborn dirt
- Makes finish super clean and smooth

Use On:
· All surfaces

Size:

200 gram bar

No. CM3200 Clay Magic Fine Grade



Polymer Clay Bar

- Embedded polymer
- Removes contaminants like tree sap, insect residue, paint overspray, road tar, rail dust & stubborn dirt
- Protects finish, super clean and smooth

Use On:
· All surfaces

Size:

200 gram bar

No. PL300 Purple Clay Bar



- Medium to aggressive grade
- Professional use
- Use to remove surface contaminants

Use On:
· All surfaces

Size:

200 gram bar

No. PL400 Gray Clay Bar



- Light to medium grade
- Professional use
- Use to remove surface contaminants

Use On:
· All surfaces

Size:

200 gram bar

FOR CLAY LUBE INFORMATION SEE PAGE 11.

Clay Magic · Kits

No. 88256 The Perfect Finish Kit



- Deep cleans
- Removes contaminants like tree sap, insect residue, paint overspray, road tar, rail dust & stubborn dirt
- Makes finish super clean and smooth

Use On:
· All surfaces

Includes:

100 gram bar
12 oz. spray bottle

CLAY MAGIC INSTRUCTIONS FOR PAINT

Step 1: Make sure the vehicle is properly washed using a premium Auto Magic car wash soap. *See page 2*

Step 2: Form Clay Magic into a pancake shape, about the size of the palm of your hand.

Step 3: Spray Clay Magic Clay Lube onto a 3' x 3' section of the vehicle's painted surface.

Step 4: Clay the surface with Clay Magic. Use as much pressure as needed to lift the contaminants off the surface. If you drop the clay onto the ground, pinch off any dirt or debris. If the clay is too dirty to clean, discard it.

Step 5: Dry the area with a soft, clean terry or micro fiber towel. Repeat this process of "spraying & claying" to the entire vehicle. It's that easy. Your vehicle is now properly cleaned!

* The car pictured to the left was thoroughly washed, but after using Clay Magic, the remaining dirt on the surface was evident. Clay Magic really deep cleans and smooths the surface.

Don't polish or wax without it!

STEP 1:



STEP 2:



STEP 3:



STEP 4:



STEP 5:



Clay Magic Works!





PERFORMANCE PLUS

Washes, Cleaners & Dressings

No. 501430 Pro Red Degreaser

Cleaner

- All-purpose
- Fast acting

Sizes:

501430: 5 Gallon
501435: 55 Gallon



No. 501460 Super Thick Dressing

Dressing

- Water-based dressing
- Great for exterior surfaces

Sizes:

501460: 5 Gallon
501465: 55 Gallon



No. 501470 Premier Dressing

Dressing

- Universal dressing
- Cherry Scent

Sizes:

501470: 5 Gallon
501475: 55 Gallon



No. 501480 Blue Exterior Dressing

Dressing

- Solvent-based
- Watermelon Scent

Sizes:

501480: 5 Gallon
501485: 55 Gallon



TUNNEL PRODUCTS

Start to Finish

No. 507105 Tunnel Pre-Soak

- Great foaming action
- Penetrates and lifts traffic film and bug residue

Sizes:

507105: 5 Gallon
507155: 55 Gallon



No. 507205 Tunnel Foaming SS

- Super suds
- Thick concentrated foam for complete coverage

Sizes:

507205: 5 Gallon
507255: 55 Gallon



No. 507305 Tunnel Super Dry

- Fast drying
- Sealer wax that causes water to quickly bead up

Sizes:

507305: 5 Gallon
507355: 55 Gallon



Auto Magic

Professional Car Care[®]

Auto Magic's Paint Correction System is all you need to create an unforgettable, professional finish – and it's completely body shop safe!

- Complete system with products that can be used on their own or as a system to achieve a high-gloss, swirl-free, and a low-dust finish
- Corrects paint imperfections like surface scratches, acid rain, oxidation and swirl marks
- Produces the highest gloss while compounding
- Can be used with both a rotary or DA polisher
- Body Shop Safe with no compromise on performance



PC
1-2-3

**ADVANCED PAINT
CORRECTION TECHNOLOGY™**

Auto Magic's Paint Correction System is an advanced system incorporating micro-abrasive technology that cuts through paint imperfections and defects, restoring the surface to like-new condition.

SUGGESTED GROUPINGS

One Stop Shop



A selection of Auto Magic's best products to complete the buffing process. This includes clay, compound, polish, and a wax system.

Products:

- 78: BC-2
- 73: Banana Magic
- 50: New Car Glaze
- 87: XP Compound
- 49: 49-Body Shine
- CM2200: Clay Magic (Fine Grade)



A selection of Auto Magic's best products to complete a wash and interior cleaning.

Products:

- 713: Special Cleaner Concentrate
- 33: Magic Dressing
- 21: Fabric & Carpet Cleaner
- 502500: Wheel Magic
- 43: Clear Difference
- 56: Wash & Wax Concentrate



A selection of Auto Magic products to complete a wash, that fit into the better category of our standard good, better and best options.

Products:

- 777: Triple Seven Cleaner
- 737: XP Citrus
- 66: Spoke
- 36: Cherry Bubbles
- 60-S: Glass Cleaner
- 60: XP Cool Blue

Auto Magic

Professional Car Care®



Request The 6 Stages of Reconditioning™ brochure and get the most out of your Auto Magic products.

Inside this brochure you will see why professional detailers worldwide have depended on Auto Magic products for over 50 years. Our products are known for their high quality and exceptional performance.

Anyone that works around cars, trucks, or other vehicles knows that having the correct tools for the job makes all the difference. Auto Magic products are designed for specific applications and when used properly **SAVE TIME AND MONEY**. Follow the steps in Auto Magic's "The 6 Stages of Reconditioning" training manual for fantastic results!

For more information about Auto Magic products and training programs, contact your local distributor or our website at automagic.com.

THANK YOU FOR CHOOSING AUTO MAGIC

Distributed By:

Auto Magic
Professional Car Care®

Auto Magic is a trademark of ITW Evercoat Cincinnati, Ohio 45242, USA
automagic.com