

EQUIPMENT

Construction & Earthmoving
Forestry & Landscaping
Compaction
Road Building
Sweepers
Specialty

Material Handling
Aerial Lifts
Attachments & Accessories
Trailers
Miscellaneous Equipment



ABOUT Southeastern Equipment



OUR COMPANY

Southeastern Equipment traces its beginnings to 1957 when Bill and Nancy Baker began selling motor grader blades to townships and counties. Within a year, the company had expanded its product line to include Adams motor graders and construction equipment from the J.I. Case Co.

The first location was housed in a Quonset hut in Old Washington, Ohio, and the company has steadily grown over the last sixty years. Today, Southeastern Equipment Company serves Ohio, Indiana, Kentucky and Michigan from eighteen branch locations with over 200 employees. The company has received accolades as the largest privately owned CASE dealer in the world and the largest Kobelco dealer in the U.S. The company has also recently opened an Environmental Division, Asphalt Products Division, and Southeastern RENTS.

Bill Baker has guided the company's expansion to ensure that Southeastern's customers will consistently receive proper care for their equipment, strategically locating each branch for optimum service. He also developed an 8,000 ft² training center at the Cambridge location, equipped with a classroom that seats 200 and large shop bays to display equipment. Both employees and customers have access to learning about cutting edge innovations through this unique facility. The employees at Southeastern Equipment care deeply about ensuring that their customers receive first class treatment. The company has chosen equipment brands that perform all day, every day, and they always deliver excellent parts and service support.

OUR SERVICES

Southeastern Equipment helps maximize uptime for customers with same day parts delivery and on-site emergency service 24 hours a day. Technicians undergo extensive training and are factory trained for any equipment they service. They routinely troubleshoot a situation to identify problems and quickly offer solutions to enhance your equipment's performance.

When you need extra machines, Southeastern Equipment will deliver clean, well maintained rental equipment right to your jobsite. You can always count on getting good value by choosing a machine that meets your equipment needs from our used equipment fleet.

OUR CUSTOMERS

Customers who purchase equipment, parts and services from Southeastern Equipment represent a wide range of businesses—residential and commercial construction companies, road builders, excavating contractors, utility contractors, landscapers, government agencies, quarries and aggregate processors, farmers, municipality crews, and all sorts of industries with warehouses and routine maintenance needs.

TABLE OF CONTENTS

Construction & Earthmoving Equipment

Loader Backhoes	3
Compact Track Loaders	3
Skid Steers	3
Crawler Dozers	3
Excavators	4 – 6
Wheel Loaders	6
Compact Wheel Loaders	7
Tractor Loader	7
Motor Graders/Maintainers	7
Articulated & Rigid Haul Trucks	7

Forestry & Landscaping Equipment

Stump Cutters	8
Industrial Mowers	8
Wood Chippers	9

Compaction Equipment

Rollers	9 – 11
---------	--------

Road Building Equipment

Cold Planer Milling Machines	12
Soil Stabilizers/Asphalt Recyclers	12
Road Wideners	12
Asphalt Transports	13
Asphalt Storage Tanks	13
Live Bottom Trailers & Truck Bodies	13
Asphalt Pavers	13 – 14
Material Transfer Vehicle	14
Material Transfer Devices	14
Asphalt Distributors	14
Chipspreaders	14

Sweepers	15
----------	----

Specialty Equipment

Landfill Compactors	16
Soil Compactors	16
Industrial Vacuum Loader	16
Catch Basin Cleaner	16
Hydro Excavators	16
Combination Jet/Vac Sewer Cleaners	17
Tack Tanks	17
Sewer Cleaners	17
Sewer Jetting Machines	17
Pavement Maintenance Equipment	17
Asphalt Maintenance Equipment/Asphalt Patchers	17

Material Handling Equipment

Rough Terrain Forklifts	18
Telehandlers	18

Aerial Lifts	19
--------------	----

Trailers	20
----------	----

Miscellaneous Equipment	20 – 21
-------------------------	---------

Attachments & Accessories	22 – 23
---------------------------	---------



LOADER BACKHOES



580 Super N WT



Model	Net Horsepower	Max Backhoe Dig Depth	Operating Weight
580N EP	68 HP	18' 6"	15,795 lb
580N	83 HP	18' 3"	16,589 lb
580 Super N	95 HP	18' 6"	17,269 lb
580 Super N WT	95 HP	18' 6"	20,077 lb
590 Super N	108 HP	20' 0"	20,532 lb

COMPACT TRACK LOADERS



TR270



TR340



Model	Net Horsepower	Operating Weight	Rated Operating Load*
TR270	68 HP	8,270 lb	2,700 lb
TR310	68 HP	8,880 lb	3,100 lb
TR340	84 HP	10,000 lb	3,400 lb
TV380	84 HP	10,550 lb	3,800 lb

*Rated operating load at 50% of tip.

SKID STEERS



SV340



Model	Net Horsepower	Operating Weight	Rated Operating Load
SR130	45 HP	5,070 lb	1,300 lb
SR160	57 HP	5,370 lb	1,600 lb
SR175	64 HP	6,270 lb	1,750 lb
SV185	57 HP	6,570 lb	1,850 lb
SR210	68 HP	6,970 lb	2,100 lb
SR240	68 HP	7,400 lb	2,400 lb
SR270	84 HP	8,117 lb	2,700 lb
SV280	68 HP	8,090 lb	2,800 lb
SV300	84 HP	8,655 lb	3,000 lb
SV340	90 HP	9,100 lb	3,400 lb

CRAWLER DOZERS



1650M



Model	Net Horsepower	Operating Weight	Blade Width
650L	LT	74 HP	96"
	WT	74 HP	112"
	LGP	74 HP	120"
750M	LT	92 HP	96"
	WT	92 HP	112"
	LGP	92 HP	120"
850M	LT	112 HP	112"
	WT	112 HP	120"
	LGP	112 HP	124"
1150M	LT	127 HP	120"
	WT	127 HP	132"
	LGP	127 HP	132"
1650M	XLT	150 HP	130"
	WT	150 HP	156"
	LGP	150 HP	156"
2050M	XLT	214 HP	142"
	WT	214 HP	142"
	LGP	214 HP	157"

COMPACT EXCAVATORS



Model	Net Horsepower	Operating Weight	Max Dig Depth
CX17C	16.8 HP	3,910 lb	7' 3"
CX26C	24.8 HP	5,520 lb	7' 11"
CX33C	24.4 HP	7,110 lb	9' 11"
CX37C	24.4 HP	7,990 lb	10' 3"
CX57C	66.9 HP	12,050 lb	12' 6"
CX60C	64.7 HP	12,940 lb	11' 9"

COMPACT EXCAVATORS



Model	Net Horsepower	Operating Weight	Max Dig Depth
SK17SR-5E	15 HP	3,836 lb	7' 7"
SK25SR-6E	20 HP	5,930 lb	9' 2"
SK30SR-6E	23 HP	7,670 lb	9' 3"
SK35SR-6E	23 HP	8,555 lb	10' 0"
SK45SRX-6E	37 HP	10,300 lb	11' 3"
SK55SRX-6E	37 HP	11,860 lb	12' 10"

STANDARD EXCAVATORS



Model	Net Horsepower	Operating Weight	Max Dig Depth
CX75CSR	55 HP	16,200 lb	13' 7"
CX80C	55 HP	18,800 lb	13' 9"
CX130D	102 HP	29,131 lb	18' 3"
CX145D SR	100 HP	31,967 lb	18' 1"
CX160D	112 HP	34,400 lb	19' 11"
CX210D	160 HP	48,973 lb	21' 10"
CX245D SR	160 HP	60,400 lb	21' 10"
CX250D	177 HP	56,909 lb	22' 8"
CX300D	207 HP	67,271 lb	23' 4"
CX350D	268 HP	82,483 lb	24' 1"
CX490D	362 HP	109,300 lb	25' 4"
CX500D-ME	362 HP	111,800 lb	21' 3"
CX700B	463 HP	153,400 lb	27' 7"
CX750D	460 HP	158,300 lb	25' 9"
CX800B	532 HP	178,575 lb	28' 6"

FULL-SIZE EXCAVATORS



Model	Net Horsepower	Operating Weight	Max Dig Depth
SK170LC-10	127 HP	38,800 lb	21' 3"
SK210LC-10	166 HP	49,400 lb	22'
SK260LC-10	185 HP	59,300 lb	23'
SK300LC-10	252 HP	68,100 lb	23' 7"
SK350LC-9E	270 HP	81,800 lb	24' 10"
SK500LC-10	369 HP	114,000 lb	25' 7"
SK850LC-9	510 HP	181,440 lb	31' 10"

MID-SIZE EXCAVATORS

KOBELCO

SK85CS-3E



Model	Net Horsepower	Operating Weight	Max Dig Depth
SK75SR-3E	55 HP	17,100 lb	15' 0"
SK85CS-3E	55 HP	18,700 lb	14' 8"

LONG REACH EXCAVATORS

KOBELCO

CASE
CONSTRUCTION

CX210D LR



Model	Net Horsepower	Operating Weight	Max Dig Depth
SK210LC-10 LR	157 HP	52,000 lb	39' 5"
SK260LC-10 LR	176 HP	60,400 lb	48' 4"
CX210D LR	160 HP	52,650 lb	39' 4"
CX250D LR	177 HP	63,523 lb	47' 9"

BLADERUNNER EXCAVATOR

KOBELCO

ED160 BR-3



Model	Net Horsepower	Operating Weight	Max Dig Depth
ED160 BR-3	92 HP	35,200 lb	19' 1"

SHORT RADIUS EXCAVATORS

KOBELCO

SK140SRLC-5



Model	Net Horsepower	Operating Weight	Max Dig Depth
SK140SRLC-5	95 HP	31,500 lb	19' 7"
SK230SRLC-5	160 HP	56,400 lb	21' 7"
SK270SRLC-5	160 HP	60,000 lb	21' 9"

TELESCOPIC EXCAVATORS

GRADALL



XL4100 IV

D-152



Model	Net Horsepower	Max Dig Depth	Operating Weight
-------	----------------	---------------	------------------

Highway Wheeled Excavators

D-152	220 HP	14' 5"	32,200 lb
D-154 (4x4)	250 HP	12' 11"	36,200 lb
XL3100 V*	215 HP	18' 4"	40,930 – 41,720 lb
XL4100 IV	245 HP	20' 3"	49,684 – 50,925 lb
XL5100 IV	265 HP	24' 5"	57,670 – 58,379 lb

Rough Terrain Wheeled Excavators

XL3300 V*	153 HP	18' 5"	39,294 lb
XL4300 V	153 HP	21' 3"	43,580 lb
XL5300 V*	153 HP	24' 7"	51,216 lb

Crawler Excavators

XL3200 V	153 HP	19' 2"	39,240 lb
XL4200 V	153 HP	22' 0"	46,862 lb
XL5200 V	153 HP	25' 4"	54,452 lb

Industrial Maintenance & Mine Scaling Machines

XL3210 III	152 HP	19' 11"	43,965 lb
XL4210 III	153 HP	22' 10"	48,500 lb
XL5210 III	153 HP	26' 2"	58,800 lb
XL3310 III	152 HP	19' 2"	42,294 lb
XL4310 III	153 HP	22' 1"	46,580 lb
XL5310 III	153 HP	25' 5"	51,216 lb
XL3320 III	152 HP	19' 2"	42,294 lb
XL4320 III	153 HP	22' 1"	46,580 lb
XL5320 III	153 HP	25' 5"	51,216 lb
XL7320 II	153 HP	6' 2"	77,000 lb

*Railroad maintenance packages available

WHEEL LOADERS

CASE
CONSTRUCTION

721G



Model*	Net Horsepower	Operating Weight	Bucket Capacity
521G	142 HP	25,236 lb	2.6 yd ³
621G	172 HP	29,076 lb	3.0 yd ³
621G Waste Handler	172 HP	29,948 lb	3.0 yd ³
721G	195 HP	33,392 lb	3.25 yd ³
721G Waste Handler	195 HP	35,061 lb	3.25 yd ³
821G	230 HP	40,648 lb	4.25 yd ³
921G	255 HP	45,651 lb	4.75 yd ³
1021G	320 HP	58,711 lb	5.50 yd ³
1121G	347 HP	63,443 lb	6.25 yd ³

*Select models available in XT (Toolcarrier) or XR (Extended Reach)

COMPACT WHEEL LOADERS



321F

Model	Net Horsepower	Operating Weight	Bucket Capacity
21F	55 HP	10,913 lb	0.92 yd ³
121F	60 HP	11,023 lb	1.0 yd ³
221F	70 HP	12,547 lb	1.2 yd ³
321F	70 HP	13,303 lb	1.3 yd ³

TRACTOR LOADERS



570N EP

Model	Net Horsepower	Max Loader Lift Capacity	Operating Weight
570N EP	72 HP	6,503 lb	11,134 lb

MOTOR GRADERS/MAINTAINERS



885B AWD

Model	Net Horsepower	Operating Weight	Blade Width
845B DHP	140/160 HP	31,812 lb	12'
865B AWD	178/190/205 HP	35,273 lb	13'
865B VHP	178/190/205 HP	33,796 lb	13'
885B AWD	205/219 HP	41,248 lb	14'
885B DHP	205/219 HP	39,771 lb	14'
M-413-XT	118 HP	13,220 lb	10'
MG-618	133 HP	18,590 lb	10'
MG-622	133 HP	22,840 lb	12'

ARTICULATED & RIGID HAUL TRUCKS



TA300

Model	Horsepower	Heaped Capacity	Payload
Articulated Trucks			
TA250	311 HP	20.3 yd ³	27.5 Ton
TA300	370 HP	22.9 yd ³	30.9 Ton
TA400	444 HP	30.3 yd ³	41.9 Ton
Rigid Trucks			
TR45	525 HP	34 yd ³	45 Ton
TR60	700 HP	46 yd ³	60 Ton
TR70	760 HP	54.3 yd ³	72 Ton
TR100	1,050 HP	72.6 yd ³	100 Ton

STUMP CUTTERS



SP4012

Model	Horsepower	Wheel Diameter	Cutting Depth
SP4012 Self-Propelled	30 – 44 HP	21"	13"
SP7015 Self-Propelled	66 HP	26.5"	15"
3500D Tow-Behind	66 HP	26.5"	15"
7500 Tow-Behind	74 HP	31"	24"
SP5014 TRX Track	30 – 44 HP	21"	14"
SP7015 TRX Track	66 HP	26.5"	15"
SP8018 TRX Track	99 HP	31"	18"
SP8124 TRX Track	170 HP	—	—
Hurricane TRX Track	140 – 250 HP	36"	25"
Hurricane RS Track	140 HP	31"	25"

INDUSTRIAL MOWERS



Remote-Control Slopemower

Model

TRAXX RF

Rotary Mowers

Model	Minimum Horsepower Requirement	Cutting Width
RX60 & RX72	35 & 45 PTO HP	60" & 72"
RX84	30 & 60 PTO HP	84"
RX96	30 & 55 PTO HP	96"
Eagle Mechanical Flex-Wing	50 PTO HP	10' & 15'
EXTEN-A-KUT II	45 PTO HP	60"
Falcon Hydraulic Flex-Wing	50 PTO HP	10' & 15'
Versa 60 & 72	60 Engine HP	60" & 72"

Flail Mowers

Model	Engine Horsepower Requirement	Cutting Width
Grass King	60 HP	62", 74"
Interstater	60 HP	12' 2" – 20' 9"
Versa Flail	60 HP	74" – 88"

Mid-Mount Boom Mowers

Model	Engine Horsepower Requirement	Boom Length
Axtreme 2	80 HP	18', 22', 25', 28'
Machete 2	80 HP	18', 22', 25'
Maverick	90 HP	21' – 24', 27' – 30'
Samurai	80 HP	18', 22', 25'
Versa Boom	80 HP	17', 20', 23'

Rear Mount Boom Mowers

Model	Horsepower Requirement	Cutting Width (Flail Head/Rotary Head)
PA41	45 PTO HP	39" / N/A
PA47	50 PTO HP	47" / 48"
PA48 M	60 PTO HP	47" / 48"

Model	Horsepower Requirement	Available Boom Lengths
Alamo Rear Mount	80 HP	17', 20', 23'

Boom Mower Cutting Heads

Model	Cutting Widths
Boom-Axe	50", 60"
Brahma	60"
BuzzBar	48" (2-blade), 69" (3-blade) and 90" (4-blade)
Ditcher	20"
Flail-Axe	44"
Heavy Duty Grass Flail	60"
Severe Duty Rotary Head	50", 60"
Timber Cat Sickle Limb Cutter	5', 7'



Versa Boom



Alamo Rear Mount Boom Mower

WOOD CHIPPERS



Model	Horsepower	Chipper Capacity	Cutting Style
660	30 HP	6"	Disk
1260	35 HP	6"	Disk
1790	88 HP	9"	Disk
1712	84 HP	12"	Disk/Drum
2012	140 HP	12"	Disk
2512	140 HP	12"	Disk
2015	140 HP	15"	Drum
2018	170 HP	18"	Disk
2518	140 – 170 HP	18"	Drum

COMPACTION EQUIPMENT

PNEUMATIC TIRE ROLLER



PT240

Model	Operating Weight	Rated Horsepower	Compaction Width
PT240	20,525 lb	99 HP	78"

PNEUMATIC TIRE ROLLERS



BW11RH-5

Model	Operating Weight	Horsepower	Compaction Width
BW11RH-5	11,023 – 20,000 lb	77 HP	68"
BW27RH-4I	18,570 – 59,525 lb	127 HP	80"

PNEUMATIC TIRE ROLLER



4700

Model	Operating Weight	Horsepower	Compaction Width
4700	3,500 lb	18 HP	39"

SINGLE DRUM VIBRATORY ROLLERS



SV212

SV208

Model	Operating Weight	Horsepower	Drum Width	Centrifugal Force
SV208	15,830 lb	99 HP	66"	32,586 lb
SV210	19,538 lb	99 HP	66"	35,957 lb
SV212	25,530 lb	148 HP	84"	62,250 lb
SV216	33,730 lb	148 HP	84"	73,037 lb

SINGLE DRUM VIBRATORY ROLLERS (HEAVY COMPACTION)



BW177 PDH-50



BW211 D-50

Model	Operating Weight	Horsepower	Drum Width	Centrifugal Force
BW124 DH-40	7,010 lb	44 HP	47.2"	18,540 lb
BW124 PDH-40	7,120 lb	44 HP	47.2"	18,540 lb
BW145 D-5	10,472 lb	73 HP	56"	17,985 lb
BW145 DH-5	10,606 lb	73 HP	56"	17,985 lb
BW145 PDH-5	11,177 lb	73 HP	56"	17,985 lb
BW177 D-5	14,551 lb	74 HP	66"	25,179 lb
BW177 DH-5	14,771 lb	74 HP	66"	25,179 lb
BW177 PDH-5	15,322 lb	74 HP	66"	25,179 lb
BW177 D-50	15,355 lb	74 HP	66"	30,375 lb
BW177 DH-50	15,640 lb	74 HP	66"	30,375 lb
BW177 PDH-50	16,115 lb	74 HP	66"	30,375 lb
BW211 D-50	21,468 lb	120 HP	84"	53,100 lb
BW211 PD-50	24,323 lb	120 HP	84"	61,875 lb
BW213 DH-4	27,498 lb	160 HP	83.9"	67,500 lb
BW213 PDH-4	28,381 lb	160 HP	83.9"	67,500 lb

TANDEM VIBRATORY ROLLERS



DV207



DV45

Model	Operating Weight	Horsepower	Drum Width	Centrifugal Force
DV23	5,400 lb	31 HP	39.4"	9,217 lb
DV26	5,842 lb	31 HP	47.2"	9,217 lb
DV36	9,480 lb	40 HP	51.2"	11,240 lb
DV45	10,296 lb	40 HP	54.3"	11,690 lb
DV207	16,226 lb	80 HP	57"	14,613 lb
DV209C	21,030 lb	100 HP	66"	18,884 lb
DV210C	22,730 lb	100 HP	66"	26,977 lb
DV213	28,718 lb	130 HP	83"	30,254 lb

COMPACTION EQUIPMENT

TANDEM VIBRATORY ROLLERS (LIGHT COMPACTION)



Model	Operating Weight	Horsepower	Drum Width	Centrifugal Force
BW900-50	2,639 lb	20 HP	35.4"	3,395 lb
BW90 AD-5	3,527 lb	20.2 HP	35.4"	3,822 lb
BW100 SL-5	5,181 lb	25 HP	39.4"	7,640 lb
BW100 ADM-5	3,638 lb	20 HP	39.4"	3,822 lb

TANDEM VIBRATORY ROLLERS (LIGHT COMPACTION)



Model	Operating Weight	Horsepower	Drum Width	Centrifugal Force
1450	2,475 lb	18 HP	28"	2,665 lb
3000	3,000 lb	18 HP	28"	2,665 lb
4000	4,000 lb	18 HP	28"	2,665 lb

TANDEM VIBRATORY ROLLERS (HEAVY COMPACTION)



Model	Operating Weight	Horsepower	Drum Width	Centrifugal Force
BW120AD-5	6,261 lb	33.8 HP	47.2"	7,419/9,442 lb
BW120SL-5	5,511 lb	25 HP	47"	8,993 lb
BW120AC-5	5,400 lb	33 HP	47"	7,419/9,217 lb
BW135AD-5	8,488 lb	46.3 HP	51.2"	5,850/9,000 lb
BW138AD-5	9,480 lb	45 HP	54"	6,975/10,800 lb
BW138AC-5	9,039 lb	45 HP	54"	7,200/11,025 lb
BW141AD-5	15,212 lb	73 HP	59.1"	14,175/18,900 lb
BW151AD-5	16,755 lb	73 HP	66"	13,950/18,900 lb
BW161AD-4	21,826 lb	99 HP	66"	18,884/28,324 lb
BW161ADO-5	21,164 lb	114 HP	66"	19,109/22,706 lb
BW161AD-5	22,045 lb	114 HP	66"	19,109/22,706 lb
BW190AD-4 HF	26,015 lb	134 HP	78"	28,800/40,950 lb
BW190ADO-5	25,353 lb	114 HP	78"	27,876/39,791 lb
BW190AD-5	26,560 lb	114 HP	78"	27,876/39,791 lb
BW284AD	28,425 lb	130 HP	84"	35,497/38,660 lb

COLD PLANER MILLING MACHINES



BM1200/35

Model	Operating Weight	Horsepower	Milling Width	Max Milling Depth
BM 500/15 Compact	18,519 lb	125 HP	19.7"	8.3"
BM 600/15 Compact	18,739 lb	125 HP	23.6"	8.3"
BM 1000/35	49,600 lb	349 HP	39.4"	13"
BM 1200/35	51,580 lb	349 HP	47.2"	13"
BM 1300/35	52,250 lb	349 HP	51.2"	13"
BM 2000/60-2	71,650 lb	590 HP	78.7"	12.6"
BM2000/75	82,673 lb	760 HP	78.7"	13.7"
BM2200/75	83,555 lb	760 HP	86.6"	13.7"

SOIL STABILIZERS/ASPHALT RECYCLERS



MPH122-2

Model	Operating Weight	Horsepower	Cutting Width	Max Cutting Depth
MPH122-2	48,722 lb	484 HP	110.6"	19.7"
MPH364-2	39,000 lb	360 HP	79"	12" – 21"
MPH600	73,965 lb	589 HP	94" – 102"	23"
RS446D	56,400 lb	415 HP	96"	20"
RS950B	70,500 lb	950 HP	96"	16"

ROAD WIDENERS



SPD-6

Model	Weight	Spread Width
SPD-6	12,320 lb	6'
SPR-6	12,000 lb	6'
SP-8	18,500 lb	8'
SPF-8	20,000 lb	8'
SPD-8	19,260 lb	8'
SP-10	25,500 lb	10'
SP-12	29,500 lb	12'

ROAD BUILDING EQUIPMENT

ASPHALT TRANSPORTS



Model	Tank Capacity	Temperature Rating
Aluminum Transport	6,000 – 14,000 gal	375°/400°F
Steel Transport	6,000 – 14,000 gal	500°/600°F

ASPHALT STORAGE TANKS



Storage Tanks
2,000 – 7,000 gal capacity

LIVE BOTTOM TRAILERS & TRUCK BODIES



Model	Tank Capacity	Product Belt Width
Falcon	Varies	42"

ASPHALT PAVERS



CR362L Rubber Track



Model	Standard Paving Width	Max Paving Width	Horsepower
CR352L Rubber Tire	8'	20'	160 HP
CR362L Rubber Track	8'	20'	160 HP
CR452 Rubber Tire	10'	28'	220 HP
CR462 Rubber Track	10'	28'	220 HP
CR552 Rubber Tire	10'	30'	260 HP
CR562 Rubber Track	10'	30'	260 HP
CR652RX Rubber Tire	10'	30'	260 HP

ASPHALT PAVERS



1750-C

Model	Paving Width	Horsepower
550-E	8' – 13'	28 HP
690-G	8' – 13'	38 HP
1550-D	8' – 14'	67 HP
1750-C	16'	99 HP

MATERIAL TRANSFER VEHICLE



CR662RM

Model	Surge Capacity	Transfer Capacity	Horsepower
CR662RM Rubber Track	43 Ton	600 TPH	260 HP

MATERIAL TRANSFER DEVICES

MS-2



Model	Horsepower	Elevator Width	Elevator Angle
MS-2	110 HP	60"	35°
MS-4	110 HP	60"	45°
MS-5	160 HP	60"	45°

ASPHALT DISTRIBUTORS



Black-Topper
Centennial Series

Model	Asphalt Pump Capacity	Spray Bar Width
Black-Topper Centennial Series	400 gpm	12' – 24'
Maintenance Distributor	200 gpm	8' or 10'

CHIPSREADERS



BIG Chipsreader

Model	Horsepower	Drivetrain	Spread Hopper Type
Standard Chipsreader	260 HP	2WD or 4WD	Fixed or Variable
BIG Chipsreader	280 HP	4WD	Variable

SWEEPERS



A7 Tornado



M6 Avalanche



Model	Sweeper Horsepower	Debris Hopper Capacity	Dust Control System Capacity
-------	--------------------	------------------------	------------------------------

Regenerative Air Sweepers

A4 Storm	74 HP	4.5 yd ³	130 gal
A7 Tornado	115 HP	8.4 yd ³	250 or 600 gal
A8 Twister	115 HP	6 yd ³	250 gal
A9 Monsoon	115 HP	9.6 yd ³	250 or 600 gal

Parking Lot Sweepers

Aero	22 HP	2 yd ³	25 gal
Updraft	31 HP	2 yd ³	12 gal
Vortex	27 HP	4.5 yd ³	93 gal
Gale Force	50 HP	4.5 yd ³	93 gal

Mechanical Broom Sweepers

M6 Avalanche	75 HP	5 yd ³	200 – 700 gal
--------------	-------	-------------------	---------------

SWEEPERS



AS10

Model	Debris Tank	Water Tank	Vacuum System
AS10	10 yd ³	300, 350 or 420 gal	35" fan/31,000 CFM
AS13	13 yd ³	300, 350, 420 or 600 gal	35" fan/31,000 CFM
AS16	16 yd ³	300, 350, 420 or 600 gal	35" fan/31,000 CFM

SWEEPERS



DT80CT

Model	Horsepower	Weight	Length	Sweeping Width
SM80CT	74 HP	6,500 lb	200"	96"
DT80J	74 HP	5,300 lb	172"	96"
DT80CT	74 HP	5,300 lb	172"	96"

TS50 Material Collection Attachment

SPECIALTY EQUIPMENT

LANDFILL COMPACTORS



BC573RB-4

Model	Operating Weight	Horsepower	Blade Width
BC473RB-4	57,320 lb	281 HP	141.5"
BC573RB-4	62,391 lb	281 HP	141.5"
BC672RB-4	71,871 lb	456 HP	149.6"
BC772RB-4	81,571 lb	456 HP	149.6"
BC972RB-4	106,925 lb	576 HP	205"
BC1172RB-4	123,019 lb	576 HP	205"

SOIL COMPACTORS



BC473 EB-4

Model	Operating Weight	Horsepower	Blade Width
BC473 EB-4	57,320 lb	281 HP	141.7"
BC772 EB-4	78,925 lb	456 HP	149.6"

INDUSTRIAL VACUUM LOADER



AllVac

Model	Vacuum Pressure	Vacuum Force	Debris Tank Capacity
AllVac	28" HG	5,760 CFM	16/18/20 yd ³

CATCH BASIN CLEANER



AllCatch

Model	Fan Rating	Hose Diameter	Debris Tank Capacity
AllCatch	33,600 CFM	12"	10/13/16 yd ³

HYDRO EXCAVATORS



AllExcavate

Model	Water Pump Pressure	Debris Tank Capacity	Water Tank Capacity
AllExcavate	24.5 gpm/3,000 psi	10 – 12 yd ³	1,000 – 1,300 gal

SPECIALTY EQUIPMENT

COMBINATION JET/VAC SEWER CLEANERS



AllJetVac P Series

Model	Debris Tank Capacity	Water Tank Capacity
AllJetVac P Series	6 – 12 yd ³	1,000 – 1,500 gal
AllJetVac R Series	6 – 12 yd ³	1,000 – 1,500 gal

TACK TANKS



MT-300

Model	Horsepower	Weight	Material Tank Capacity
MT-300	9.5 HP	2,250 lb	300 gal
MT-600	9.5 HP	2,850 lb	600 gal

PAVEMENT MAINTENANCE EQUIPMENT



Hotbox Reclaimer

Model	Model	Model
Hotbox Reclaimers	Infrared Recyclers	Asphalt Recyclers

SEWER CLEANERS



JV750 Trailer

Model	GVW	Debris Tank Capacity	Water Tank Capacity
Jet-N-Vac JV600 Trailer	14,000 lb	600 gal	300 gal
Jet-N-Vac JV750 Trailer	16,000 lb	750 gal	300 gal
Jet-N-Vac Truck	N/A	Up to 6yd ³	Varies

SEWER JETTING MACHINES



Dyna-Jet 40-2000

Model	Gallons/Min	Hose Reel	Trailer GVW	Max PSI
Dyna-Jet 12-2200	12	½" x 300'	3,500 lb	2,000
Dyna-Jet 18-4000	18	½" x 500'	7,000 lb	4,000
Dyna-Jet 20-4000	20	½" x 500'	7,000 lb	4,000
Dyna-Jet 40-2000	40	¾" x 500'	10,000 lb	2,000

ASPHALT MAINTENANCE EQUIPMENT/ASPHALT PATCHERS



Roadpatcher

Model	Blower System	Hopper Capacity (Aggregate)	Emulsion Tank Capacity
Street Max	670 CFM	N/A—Fed with a dump truck	300 gal
Load King	435 CFM	2 yd ³	100 gal
Roadpatcher	435 CFM	6.5 yd ³	300 gal

MATERIAL HANDLING EQUIPMENT

ROUGH TERRAIN FORKLIFTS



588H

Model	Operating Weight	Max Lift Capacity
586H	14,621 lb	6,000 lb
588H	16,978 lb	8,000 lb

TELEHANDLERS



Model	Horsepower	Max Lift Height	Lift Capacity
6036	74 HP	36' 1"	6,000 lb
6042	74 HP	41' 11"	6,000 lb
642	110 HP	42'	6,600 lb
8042	110 HP	41' 11"	8,000 lb
943	110 HP	43'	9,000 lb
10042	110 HP	42' 1"	10,000 lb
1043	110 HP	43'	10,000 lb
10054	110 HP	53' 2"	10,000 lb
1055	130 HP	55'	10,000 lb
1255	130 HP	55'	12,000 lb
G15-44A	130 HP	44'	15,000 lb

TELEHANDLERS



GTH-844

Model	Horsepower	Max Lift Height	Lift Capacity
GTH-844	99 HP	44'	8,000 lb
GTH-1056	124 HP	56' 10"	10,000 lb

COMPACT TELEHANDLER



G5-18A	
Horsepower	74 HP
Rated Capacity	5,512 lb
Max Lift Height	18'

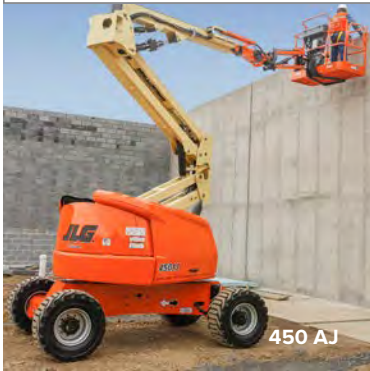
COMPACT TELEHANDLER



GTH-5519	
Horsepower	63 – 68 HP
Rated Capacity	5,500 lb
Max Lift Height	19'

AERIAL LIFTS

ARTICULATING BOOM LIFTS



Model	Platform Height	Lift Capacity	Weight
340AJ	33' 10"	500 lb	9,700 lb
450AJ	45'	550 lb	12,650 lb
600 Series			
<i>4 models</i>	60'	500 – 1,000 lb	22,040 – 24,200 lb
740AJ	74'	500 lb	36,200 lb
800 Series			
<i>2 models</i>	80'	500 – 1,000 lb	34,300 lb
1250AJP	125'	500 – 1,000 lb	44,000 lb

TELESCOPIC BOOM LIFTS



Model	Lift Capacity	Platform Height	Weight
S-40	500 lb	40'	12,320 lb
S-45	500 lb	45'	15,230 lb
S-60X	1,000 lb	60'	20,740 lb
S-65	500 lb	65'	22,270 lb

SCISSOR LIFTS



Model	Platform Height	Platform Capacity	Overall Width
Engine Powered Rough Terrain			
<i>4 models</i>	26' – 53'	1,250 – 2,250 lb	69" – 94"
Electric			
<i>11 models</i>	18' 9" – 40'	250 – 1,000 lb	30" – 69"

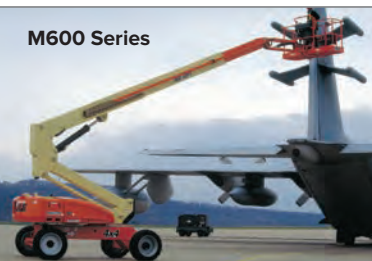
ELECTRIC BOOM LIFTS



E450 Series



M600 Series



Model	Platform Height	Lift Capacity	Weight
H340AJ Hybrid	33' 9"	500 lb	9,860 lb
E300 Series			
<i>2 models</i>	29' 5" – 30' 2"	500 lb	15,060 – 15,400 lb
E400/M400 Series			
<i>5 models</i>	40'	500 lb	13,100 – 15,200 lb
E450/M450 Series			
<i>3 models</i>	45'	500 lb	12,600 – 14,700 lb
E600/M600 Series			
<i>4 models</i>	60' 3"	500 lb	15,200 – 16,050 lb

TELESCOPIC BOOM LIFTS



Model	Platform Height	Lift Capacity	Weight
400 Series	40' – 46'	600 lb	13,425 – 16,370 lb
<i>2 models</i>			
600 Series	60' 3" – 66' 8"	500 lb	21,800 – 26,650 lb
<i>2 models</i>			
600 Series	60' 3" – 66' 8"	500 lb	22,500 – 27,100 lb
<i>Crawlers— 2 models</i>			
800 Series	80' – 86'	500 lb	33,200 – 36,400 lb
<i>2 models</i>			
Ultra Series	120' – 185' 7"	500 – 1,000 lb	40,900 – 60,300 lb
<i>4 models</i>			

TRAILERS

HEAVY EQUIPMENT TRAILERS



35 Ton Lowboy

Model	Capacity	Types	Axle Setups
Lowboys	25 – 100 Ton	Rear loading, folding gooseneck, removable gooseneck	Tandem, tridem, or spread-axle

TAGALONGS



B9DOW



10 models

Capacity 6 – 25 Ton

TAGALONGS



71 models

Capacity 1 – 20 Ton

LOWBOYS



35 GSL



18 models

Capacity 25 – 70 Ton

MISCELLANEOUS EQUIPMENT

MUNICIPAL VEHICLE



MV4 Maintenance Vehicle 115 HP 6,500 lb operating weight

Available Attachments

Asphalt Planers	Snowblowers—50", 60", 70", & 80" widths
Mowers	Sweepers
Snow Plows	
Sand and Salt Spreaders	

FLUSHERS/SPRINKLERS



Street Flusher

Model	Tank Capacity	Water Pump Capacity
Street Flusher	1,900 – 3,500 gal	750 gpm
Pressure Sprinkler	1,500 – 3,500 gal	185 – 400 gpm

MISCELLANEOUS EQUIPMENT



185



Portable air compressors

Model	Rate	Pressure
185	185 CFM	100 PSIG
260	260 CFM	150 PSIG
375	425 CFM	200 PSIG



Skid steer tracks
Rubber or steel



Pipeline & sewer inspection equipment

- Pushroad camera systems
- Camera transporters



Tampers
Walk behind rollers
Single directional plates
Reversible plates



Plate compactors
Pneumatic breakers



Snow plows **Dump bodies**
Spreaders **Plow hitches**



Snow plows
Spreaders



Industrial scrubbers
Industrial ride-on sweepers



Sectional snow plows
Snow pushers



Trash pumps



Generator sets
Light towers



Rubber tracks
Undercarriages

ATTACHMENTS & ACCESSORIES

CONSTRUCTION & DEMOLITION ATTACHMENTS



- | | | |
|---------------|----------------|-------------------|
| Augers | Grapples | Sweepers & brooms |
| Brush cutters | Land sculptors | Thumbs |
| Buckets | Mulchers | Tillers |
| Cold planers | Post drivers | Tree shears |
| Couplers | Rakes | Tree spades |
| Forks | Stump grinders | |

HYDRAULIC BREAKERS / HAMMERS



Model	Impact Energy Class
Fx 15a	150 ft lb
Fx 25a	275 ft lb
Fx 35a	375 ft lb
Fx 45a	550 ft lb
Fx 55a	800 ft lb
F 6	1,000 ft lb
F 9	1,500 ft lb
Fx 125TLB/Qtv	2,000 ft lb
Fx 175Qtv	3,250 ft lb
Fx 275Qtv	5,250 ft lb
Fx 375Qtv	6,500 ft lb
Fx 475Qtv	8,500 ft lb
F 70Qt	10,000 ft lb
F 100Qt	15,000 ft lb

ACCESSORIES FOR CASE MACHINES



- Auxiliary hydraulic kits for CASE machines
- Strobes/Beacons
- Mirrors
- Radios
- Fenders
- Special gauges
- Stabilizer guards
- And more

MACHINE WORKFLOW SOLUTIONS



- Machine control systems
- Paving workflow solutions
- Site and grade management
- Remote machine monitoring

ATTACHMENTS & ACCESSORIES

Southeastern
EQUIPMENT CO. INC.

ACS
INDUSTRIES, INC.



Buckets
Couplers
Grapple buckets

Forks
Rakes
Thumbs

Parker



Hydraulic hoses
Hydraulic hose fittings

FECON



Land clearing attachments
Brush cutting attachments
Tree shredding attachments
Forestry mulching machines

Gaith



Buckets
Grapples
Quick couplers
Thumbs

WB
WERK BRAU CO. INC.



Grapples
Buckets

Couplers
Thumbs

CONEQTEC
UNIVERSAL



Cold planers for skid steers
and backhoes
Manhole saws
Rocksaws

AMMBUSHER



Brushcutter skid steer
attachments

HELAC
CORPORATION



Couplers

OKADA
AMERICA



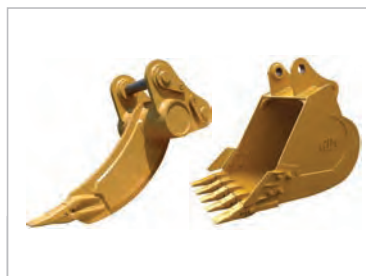
Jaw crusher and cutter
attachments for excavators

mb
MB Companies
www.m-bce.com



Brooms for skid steers,
tractors and trucks

AIM
ATTACHMENTS
WORLDWIDE



Thumbs
Buckets

Grapples
Couplers

CARCO **Allied**
WINCH



Winches for dozers

1-800-798-5438

www.southeasternequip.com

Services

- CNH revolving account for parts, services, rental and accessory purchases
- Equipment rental and leasing
- Extended warranties
- Factory trained service technicians
- Machine inspection, maintenance
- Oil and wear analysis
- Online parts catalog
- On-site field service
- Operator training, general training and maintenance training
- Parts support with a multimillion dollar inventory
- Remanufactured engines, transmissions, hydraulics, parts and components
- Tailored financing for new and used equipment purchases
- Undercarriage monitoring and replacement
- Used equipment
- Welding and fabrication

Equipment

- Air Compressors
- Articulated Trucks
- Asphalt Distributors & Chipspreaders
- Sewer Trucks
- Compact Track Loaders
- Compaction Equipment
- Crawler Dozers
- Excavators—Compact
- Excavators—Full Size
- Hydro Excavators
- Loader/Backhoes
- Motor Graders
- Paving Equipment
- Road Wideners
- Rough Terrain Forklifts
- Skid Steer Loaders
- Street Sweepers & Brooms
- Telehandlers
- Trailers
- Wheel Loaders

Indiana

Evansville
7444 Enterprise Park Circle
Evansville, IN 47715
Phone: 812-476-7321
Fax: 812-476-3050

Fort Wayne
3333 W. Coliseum Blvd
Fort Wayne, IN 46808
Phone: 260-483-8868
Fax: 260-483-5448

Indianapolis
4951 West 96th St
Indianapolis, IN 46268
Phone: 317-872-4877
Fax: 317-879-9015

Kentucky
Burlington
1982 Florence Pike
Burlington, KY 41005
Phone: 859-586-6133
Fax: 859-586-6401

Michigan
Holt
1776 S. Cedar St
Holt, MI 48842
Phone: 517-694-0471
Fax: 517-694-0514

Novi
48545 Grand River Ave
Novi, MI 48374
Phone: 248-349-9922
Fax: 248-349-9191

Ohio

Brilliant
1356 3rd St
Brilliant, OH 43913
Phone: 740-598-3400
Fax: 740-598-3434

Brunswick
1500 Industrial Pkwy
Brunswick, OH 44212
Phone: 330-225-6511
Fax: 330-225-3510

Cambridge
10874 East Pike Rd
Cambridge, OH 43725
Phone: 740-432-6303
Fax: 740-432-3303

Dublin
6390 Shier-Rings Rd
Dublin, OH 43016
Phone: 614-889-1073
Fax: 614-761-1156

Gallipolis
228 SR 7 North
Gallipolis, OH 45631
Phone: 740-446-3910
Fax: 740-446-6628

Heath
1505 Hebron Rd (Route 79)
Heath, OH 43056
Phone: 740-522-3500
Fax: 740-522-3540

Mansfield
3875 West Fourth St
Mansfield, OH 44903
Phone: 419-529-4848
Fax: 419-529-3572

Marietta
26580 SR 7
Marietta, OH 45750
Phone: 740-374-7479
Fax: 740-374-7457

Mentor
8757 Tyler Blvd
Mentor, OH 44060
Phone: 440-255-6300
Fax: 440-205-9440

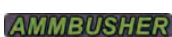
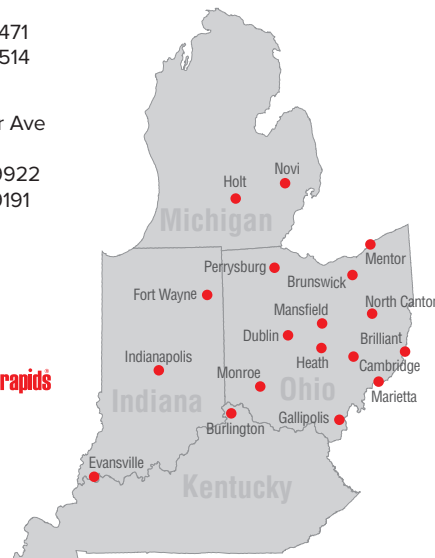
Monroe
404 Breden Rd
Monroe, OH 45050
Phone: 513-539-9214
Fax: 513-539-6917

North Canton
6415 Promler Ave
North Canton, OH 44720
Phone: 330-494-3950
Fax: 330-494-7739

Perrysburg
27207 N. Dixie Hwy
Perrysburg, OH 43551
Phone: 419-874-0331
Fax: 419-874-6145



Environmental Division
11353 East Pike Road
Cambridge, OH 43725
740-255-5643



Not all products are available at all locations.