






Thank you for choosing the Sound Control Technologies' RemoteCam5™ camera integration kit!

Included in each RemoteCam5™ kit will be:

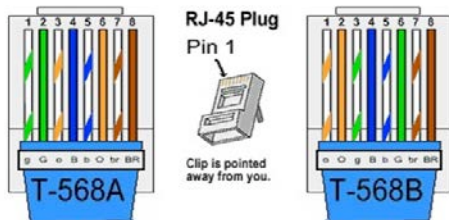
<ul style="list-style-type: none"> • 1 Power Supply & cord (Currently all RemoteCam Kits utilize the WPS-12) to provide power for the RemoteCam5™ electronics as well as the remote camera up to 300' from the head end. All the RemoteCam™ kits use the same power supply. The power supply is AC 100-240V~47-63HZ compliant. 	
<ul style="list-style-type: none"> • 1 RemoteCam5™ Head End Module (RC5-HE) which provides system power, control interface (Ethernet & IR) for the camera & one HDMI video output for the codec. 	
<ul style="list-style-type: none"> • 1 RemoteCam5™ Camera Module with PowerSniffer™ (RC5-CE) that provides camera power, control (Ethernet & IR) and HDMI video input for the camera 	
<ul style="list-style-type: none"> • Documentation 	
<ul style="list-style-type: none"> • Specific cables (P/N according to the following chart) 	

Company	Codec	Camera	SCT Kit	Cables
Cisco	SX80	Precision 60	RC5-P60	RCC-C001/RCC-C002/PPC-003 RCC-H001/RCC-H016
Panasonic	AW-RP50 AW-RP120 Generic Controller	Panasonic AW-HE130 AW-HE40 AW-UE70	RC5-P13 RC5-P40 RC5-P70	RCC-C001/RCC-C002/PPC-005 RCC-H001/RCC-H016
Sony	RMP10 or Generic Controller	Sony SRG-120H SRG-300H	RC5-SRG	RCC-C001/RCC-C002/PPC-004 RCC-H001/RCC-H016

To proceed with the installation, insure that you have installed one CAT5e or CAT6 cable between the camera installation site and the codec installation site.

Minimum distance should be approximately 30'/9M.

The cable **must** be wired for either UTP 568A or UTP 568B. Please use the above scheme.



To install the RemoteCam5™ Kit, follow this step-by-step guide:

• Step 1

- Test and verify the Cat5e or Cat6 **LINK** cable for UTP 568A or 568B wiring: **See steps 2 & 3.**

• Step 2

- Install the RC5-HE Head-End Module at the rack/equipment location.
- Connect the Cat5e or Cat6 cable to the RJ45 connector labelled **LINK** on the RC5-HE module.
 - Connect the power supply to the RC5-HE Module.
- Wait to connect the **LINK** cable to the RC5-CE until steps 3 & 4 are completed.



• Step 3

At the camera location connect the PowerSniffer™ to the CAT5e or CAT6 **LINK** cable. If the **LINK** cable is properly terminated it will display 8 green LEDs. See image at left.

Any other result, please re-terminate.

• Step 4

- **Disconnect the power supply from the RC5-HE**

• Step 5

- Connect the CAT5e or CAT6 cable to the RJ45 connector labelled **LINK** to the RC5-CE Camera Module.

• Step 6

- Connect provided cables between codec and RC5-HE module. The codec (or second camera or touch panel) can connect to Port 1 or Port 2 of the RC5-HE.

• Step 7

- Connect provided cables between camera and RC5-CE module.

• Step 8

- **Connect the power supply to RC5-HE module**

• LED Behavior:

- **Head-End Module HDCP LED:** Blinking = HDCP Inactive, Solid = HDCP Active
- **Head-End Module **LINK** LED:** Blinking Red = No Link, Blinking **Red** to **Green** = **LINK** Active
- **Camera Module:** LED will be **Red** until Link is established, Solid **Green** when **LINK** is Active

• Step 9

- **Enjoy!**