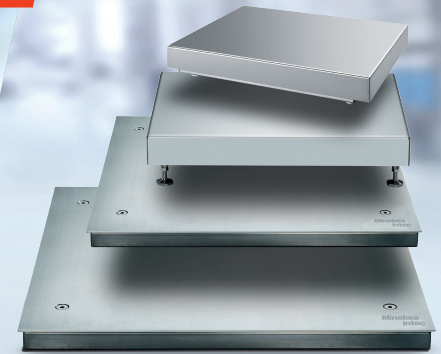




# Product Guide 2021

Bench and Floor Scales  
Vessel and Silo Systems





On the Web: [www.minebea-intec.com](http://www.minebea-intec.com)  
 Minebea Intec Directory  
 Intec Main: 866-963-8587  
 Sales: ext. 8127  
 Customer Service: ext. 8124  
 Tech Support: ext. 8125  
 Fax: 631-942-0162  
 Order entry email: [orders.us@minebea-Intec.com](mailto:orders.us@minebea-Intec.com)

## Table of Contents

Combics Complete.....	Page 5
Combics Indicator IP44.....	Page 7
Combics Indicator IP69K.....	Page 8
Combics Platform, Painted.....	Page 11
Combics Platform, Stainless Steel.....	Page 12
Minebea Intec OPC UA Server.....	Page 16
Midrics Complete Scales, Non-verified.....	Page 17
Midrics Complete Scales, Measurement Canada.....	Page 18
Midrics Indicators.....	Page 19
Midrics Indicator Accessories.....	Page 20
Midrics Bench Scales.....	Page 21
Midrics Painted Floor Scales (MAPP4U).....	Page 22
Midrics Extend.....	Page 23
Signum, Pre-Configured.....	Page 25
Signum Supreme, High Resolution Painted (SIWSBBP).....	Page 27
Signum Supreme, Painted (SIWSDCP).....	Page 28
Signum Supreme Stainless Steel High Resolution (SIWSBBS).....	Page 29
Signum Supreme Stainless Steel (SIWSDCS).....	Page 30
Signum Advanced, Painted High Resolution (SIWABBP).....	Page 31
Signum Advanced (SIWADCP).....	Page 32
<b>Signum Advanced Extend (SIWAEDG).....</b>	<b>Page 33</b>
<b>Signum Regular Painted (SIWRDCP).....</b>	<b>Page 34</b>
<b>Signum Options &amp; Accessories.....</b>	<b>Page 35</b>
IFP4 Flat Bed Scales, Painted.....	Page 39
IFS4 Flat Bed Scales, Stainless Steel.....	Page 42
IS Series Platforms.....	Page 47
<b>Printers, Scanners and Bluetooth.....</b>	<b>Page 49</b>
Combics 2 indicators for hazardous areas (CAIXS2).....	Page 51
Combics Platforms for hazardous areas.....	Page 53
IFXS4 Flat Bed platforms for hazardous areas.....	Page 55
Signum Supreme EX and IS EX Scales for hazardous areas.....	Page 59

## Table of Contents Continued

Inteco Compression Load Cell.....	Page 61
PR6201 Compact Compression Load Cell.....	Page 62
Digital Converter Connexx.....	Page 64
PR6211 Compact Compression Load Cell.....	Page 65
PR6212 Compact Compression Load Cell.....	Page 66
PR6202 Hygienic Precision Compression Load Cell.....	Page 69
<b>PR6241 Contego Hygienic Load Cell and Mount.....</b>	<b>Page 71</b>
PR6241 Compression S-Type Load Cell.....	Page 73
PR6246 Tension S-Type Load Cell.....	Page 75
PR6251 PanCake Level Sensor.....	Page 77
Novego Hygienic Compression Load Cell.....	Page 79
<b>PR 40 Single Point Load Cells.....</b>	<b>Page 81</b>
<b>PR 57, PR 58 Single Point Load Cells.....</b>	<b>Page 83</b>
<b>NITO PR 77 Bending Beam Load Cells.....</b>	<b>Page 85</b>
<b>TIGO PR 76 Tension S Type Load Cells.....</b>	<b>Page 87</b>
<b>Junction Boxes and Load Cell Cables.....</b>	<b>Page 89</b>
PR5900 Maxxis 5 Process Controller Pre-Configured.....	Page 91
PR5900 Maxxis 5 Process Controller Built to Order.....	Page 92
PR5500 Maxxis 4 System Controller Pre-Configured.....	Page 95
PR5500 Maxxis 4 System Controller Built to Order.....	Page 96
X3 Process Indicator.....	Page 97
PR5230 Transmitters in Field Housing, Pre-Configured.....	Page 99
PR5230 Process Transmitter in Field Housing Built to Order.....	Page 100
<b>PR5220 and PR5211 Transmitters.....</b>	<b>Page 101</b>
<b>CSD Weight Transmitters.....</b>	<b>Page 103</b>
PR8501 ProRecipe XT.....	Page 105

## Combics Complete Scales (CAW)



Mild Steel with CAISL2-U								
Order no.	Dimensions (LxW)	Capacity		Readability		Platform Cable	Shipping Weight	Price In USD
		(in.)	(lb)	(kg)	(lbs)			
CAW2P1U-10CC-I	10x10	15	6	0.0005	0.0002	10	20	\$2,080
CAW2P1U-50DD-I	12x12	60	30	0.002	0.001	10	24	\$2,113
CAW2P1U-100EE-I	18x18	150	60	0.005	0.002	10	65	\$2,425
CAW2P1U-250GG-I	24 x 24	300	150	0.01	0.005	10	120	\$3,703

Stainless Steel with CAIS2-U								
Order no.	Dimensions (L x W)	Capacity		Readability		Platform Cable	Shipping Weight	Price In USD
		(in.)	(lb)	(kg)	(lb)			
CAW2S1U-10CC-I	10 x 10	15	6	0.0005	0.0002	10	22	\$2,581
CAW2S1U-50DD-I	12 x 12	60	30	0.002	0.001	10	30	\$2,716
CAW2S1U-100EE-I	18 x 18	150	60	0.005	0.002	10	68	\$2,878
CAW2S4U-250GG-I	24 x 24	300	150	0.01	0.005	10	127	\$6,300

Accessories		Price In USD
Order no.	Description	
YDH03CISUS	43" floor mounted column	\$355
YBP03CIS	4-leg base for column	\$232
YPP01CWS	Printer stand for column	\$364
YDH01CWSUS	Post mount assembly for 10" x10" platforms, 13" High	\$216
YDH02CWSUS	Post mount assembly for 12" x12" platforms, 19" High	\$232
YDH03CWSUS	Post mount assembly, for 18" x18" platforms, 29" High	\$268
YDH12CWSUS	Bench mount bracket	\$93
YDH02CISUS	Wall mount bracket	\$93
YAS07CI	Panel (cabinet) mount kit	\$316



## Combics Indicator CAISL (IP44)



Order no.	Price in USD
<b>Combics 1 Indicator</b>	
<b>CAISL1-U</b>	<b>\$1,195</b>
Display LCD, backlit with 20mm weight value Standard data interface RS232 via D-SUB 25-pin connector One scale connection in total (analog or digital) Material: stainless steel, ingress protection: IP44	

<b>Combics 2 Indicator</b>	
<b>CAISL2-U</b>	<b>\$1,488</b>
Display LCD, backlit with 20mm weight value Integrated LED's for checkweighing (red-green-yellow) Standard data interface RS232 via D-SUB 25-pin connector, PS/2 connector Two scale connections in total (analog or digital) Basic applications: weighing, counting, animal weighing, checkweighing, sorting, totalizing, net-total, averaging, percent weighing Material: stainless steel, ingress protection: IP44 Clock option Standard for date and time	

<b>Combics 3 Indicator</b>	
<b>CAISL3-U</b>	<b>\$1,983</b>
Dot-matrix display, backlit, weighing data with status indicators Integrated LED's for checkweighing (red-green-yellow) Standard data interface RS232 via D-SUB 25-pin connector, PS/2 connector Three scale connections in total (2 digital 1 analog, or 1 digital 2 analog) Basic applications: weighing, counting, animal weighing, checkweighing, sorting, totalizing, net-total, averaging, percent weighing Material: Stainless steel, ingress protection: IP44 Clock option Standard for date and time	

<b>Indicators for direct connection with IS platforms</b>		
Model no.	Description	Price in USD
<b>CAISL1-UV1</b>	Combics 1 (IP44) pre-wired for direct connection to IS platform	<b>\$1,674</b>
<b>CAISL2-UV1</b>	Combics 2 (IP44) pre-wired for direct connection to IS platform	<b>\$1,948</b>
<b>CAISL3-UV1</b>	Combics 3 (IP44) pre-wired for direct connection to IS platform	<b>\$2,354</b>

## Combics Indicators CAIS (IP69K)



Order no.		Price in USD
<b>Combics 1 Indicator</b>		
<b>CAIS1-U</b>	Display LCD, backlit with 20mm weight value Standard data interface RS232 via cable gland One scale connection in total (analog or digital) Material: stainless steel, ingress protection: IP69k	<b>\$1,597</b>

<b>Combics 2 Indicator</b>		
<b>CAIS2-U</b>	Display LCD, backlit with 20mm weight value Integrated LED's for checkweighing (red-green-yellow) Standard data interface RS232 via cable gland Two scale connections in total (analog or digital) Basic applications: weighing, counting, animal weighing, checkweighing, sorting, totalizing, net-total, averaging, percent Material: stainless steel, ingress protection: IP69k Clock option standard for date and time	<b>\$1,885</b>

<b>Combics 3 Indicator</b>		
<b>CAIS3-U</b>	Dot-matrix display, backlit, weighing data with status indicators Integrated LED's for checkweighing (red-green-yellow) Standard data interface RS232 via cable gland, PS/2 connector Three scale connections in total (2 digital 1 analog, or 1 digital 2 analog ) Basic applications: weighing, counting, animal weighing, checkweighing, sorting, Material: Stainless steel, ingress protection: IP69k Clock option standard for date and time	<b>\$2,379</b>

<b>Indicators for direct connection with IS platforms</b>		
Model no.	Description	Price in USD
<b>CAIS1-UV1</b>	Combics 1 (IP69k) pre-wired for direct connection to IS platform	<b>\$1,926</b>
<b>CAIS2-UV1</b>	Combics 2 (IP69k) pre-wired for direct connection to IS platform	<b>\$2,302</b>
<b>CAIS3-UV1</b>	Combics 3 (IP69k) pre-wired for direct connection to IS platform	<b>\$2,745</b>



## Combics Indicator Accessories



Description	CAISL1	CAISL2/3	CAIS1/2/3	Order no.	Price In USD
<b>UniCOM</b>					
RS232 interface		•	•	YDO02C-232	\$525
RS422 or RS485 interface		•	•	YDO02C-485	\$525
Digital 5 Input / 5 Output opto Isolated		•	•	YDO02C-DIO	\$825
Analog current output, 0-20 mA, 4-20 mA, 0-10V, 16-bit		•	•	YDO02C-AO	\$825
Profibus DP module			•	YDO02C-DP	\$1,227
DeviceNet Interface			•	YDO02C-DN	\$1,200
Ethernet TCP/IP			•	YDO02C-ETH	\$825
<b>WP1</b>	<b>CAIS(L)1</b>	<b>CAIS(L)2</b>	<b>CAIS(L)3</b>		<b>Price In USD</b>
Interface (RS232/485) for a direct connection of a digital platform		•	•	YDIO2C-WPD	\$344
ADC interface for analog Platform 2x 3,000e		•	•	YDIO2C-WP03	\$279
<b>WP2</b>	<b>CAIS(L)1</b>	<b>CAIS(L)2</b>	<b>CAIS(L)3</b>		<b>Price In USD</b>
Interface (RS232/485) for a direct connection of a digital platform		•	•	YDIO2C-WPD	\$344
ADC interface for analog platform 10,000e		•	•	YDIO2C-WP10	\$493
<b>Connection cables for IP69K version (open ended cable to...)</b>				<b>Order no.</b>	<b>Price In USD</b>
5-pin round female connector, 1m connecting cable for bar code reader YBR03FC				YCC02-BR02	\$272
25-pin D-SUB female connecting cable for accessories				YCC02-D25F6	\$272
25-pin D-SUB male connector, 6m connecting cable for Minebea Intec scales				YCC02-D25M6	\$272
9-pin D-SUB female connecting cable for printer YDP-21 or PC				YCC02-D09F6	\$272
9-pin D-SUB male connector, 6m connecting cable for printer ZD420				YCC02-D09M6	\$272
12-pin round male connector, 6m connecting cable for Minebea Intec scales				YCC02-R12M6	\$272
12-pin round female connector, 6m connecting cable for accessories and IS platforms and Checkweighing Display YRD14Z				YCC02-R12F6	\$272
connecting cable to open ended cable, 6m				YCC02-RELAIS02	\$229
Ethernet connecting cable with RJ45 male connector, 7m				YCC02-RJ45M7	\$229
<b>Power Supply</b>				<b>Order no.</b>	<b>Price In USD</b>
24V industrial power supply module				YAS02MI	\$207

<b>Software</b>	<b>Order no.</b>	<b>Price In USD</b>
Software Wedge for DOS and Windows, including 5 ft. cable	YSW05	\$447
Software Wedge Pro for Windows, with Ethernet connectivity, including 5 ft. of cable	YSW06	\$736
<b>Printers</b>	<b>Order no.</b>	<b>Price In USD</b>
Strip Printer, with statistics, date, and time functions	YDP21	\$1,066
Verifiable label and strip printer with direct thermal print head	ZD420d	\$2,195
<b>Barcodes, Relay boxes and Others</b>	<b>Order no.</b>	<b>Price In USD</b>
Barcode reader with 25 pin D-SUB male connector	YBR03CISL	\$1,356
Dust Covers (2 units)	YDC01CI	\$80
IP65 Upgrade kit for cable connectors (D-sub 25)	YAS01CISL	\$256
Connection kit- male and female connector for connecting an analog platform to an indicator (disconnectable plug-in)	YAS99I	\$365
Relay box for connecting scales to external control units, with 4 relay outputs (230/3A) and 1 opto coupler input (0-30V)	YSB01	\$707
Digital Input-/output module for connecting Combics 3 to external control units, with 8 open collector outputs (50mA) and 7 TTI-compatible inputs (0-30V)m, connecting cable YCC02-RELAIS 01/02 necessary	YSB02	\$627

## Combics Indicator Accessories Continued



Cables for IP44 version (25 pin D-SUB male connector to...)	Order no.	Price in USD
5-pin round female - connecting cable for YBR02FC or PC/AT keyboard	YCC02-BR02	\$272
25-pin male, 3m - connecting cable for Minebea Intec scale or indicator	YCC01-01M3	\$272
9-pin D-SUB male connector, 3m - connecting cable for printer YDP14-OCE	YCC01-01CISLM3	\$272
9-pin D-SUB female connector, 1.5m connecting cable for PC	YCC01-10CIM3	\$272
12-pin round male connector, 3m connecting cable for Minebea Intec scales	YCC01-02ISM3	\$272
12-pin round female connector, 3m - connecting cable for accessory and IS platforms	YCC01-03CISLM3	\$272
open ended cable, 6m - connecting cable to open ended	YCC02-RELAIS01	\$272
Connecting cable from RS232 to USB-Connector, 2m	YCC01-USBM2	\$272
5-pin round male connector, 2m - connecting cable for external rechargeable battery pack YRB10Z	YCC02-RB01	\$284
9/25-pin D-SUB female, 5m	YCC05-001M5	\$107
9/25-pin D-SUB female, 10m	YCC05-001M10	\$131
9/25-pin D-SUB female, 15m	YCC05-001M15	\$146

Cables for Com 2 on CAISL3 (9 pin D-SUB male connector to..)	Order no.	Price in USD
25-Pin D-SUB, 6m	YCC04-D25M6	\$251
12-Pin Round Male, 6m	YCC04-R12M6	\$251
12-Pin Round Female, 6m	YCC04-R12F6	\$251
9-Pin D-SUB Male, 6m	YCC04-D09M6	\$251
9-Pin D-SUB Female, 6m	YCC04-D09F6	\$251

Floor mounted	Order no.	Price in USD
Floor mounted column for any platform 24" x18" or larger. Options include 43" high column	YDH03CISUS	\$355
4-Leg base for column	YBP03CIS	\$232
Retainer, for bar code scanner	YBH01CWS	\$242
Printer stand for column	YPP01CWS	\$364

Column, for attaching indicator-platform	Order no.	Price in USD
*Note- columns for 3 platform sizes are interchangeable		
Post mount assembly for 10" x10" platforms, 13" High	YDH01CWSUS	\$216
Post mount assembly for 12" x12" platforms, 19" High	YDH02CWSUS	\$232
Post mount assembly, for 18" x18" platforms, 29" High	YDH03CWSUS	\$268

Mechanical Accessories	Order no.	Price in USD
Bench Mount Bracket for 10x10, 12x12, and 18x18 inch platforms	YDH12CWSUS	\$93
Wall Mount Bracket	YDH02CISUS	\$93
Panel (cabinet) mount kit, with gasket, for all Combics indicators	YAS07CI	\$316

Statistical Process Control Software	Order no.	Price in USD
Combics SPC software for stand-alone systems for average weight control	H5	\$510

Recommended Spare Parts		
Description	Order no.	Price in USD
Front Panel Combics 1	69CW0450	\$241
Front Panel Combics 2	69CW0451	\$396
Front Panel Combics 3	69CW0452	\$659
Power Supply PCB	69CW0064	\$182
Digital PCB	69CW0456	\$873
ADC interface for analog platform	YDI02C-WP03	\$279



Platform Selection									
Order no.	Dimensions		Capacity		Readability		Cable platf. (ft)	Shipping Weight (lb)	Price in USD
	(in.)	(lb)	(kg)	(lb)	(g)				
CAPP1U-10CC-LU	10x 10	15	6	0.0005	0.2	10	14	\$781	
CAPP1U-20CC-LU	10x 10	30	15	0.001	0.5	10	14	\$781	
CAPP1U-50CC-LU	10x 10	60	30	0.002	1	10	14	\$781	
CAPP1U-50DD-LU	12 x 12	60	30	0.002	1	10	18	\$858	
CAPP1U-50EE-LU	18 x 18	60	30	0.002	1	10	64	\$1,148	
CAPP1U-100DD-LU	12 x 12	150	60	0.005	2	10	18	\$858	
CAPP1U-100EE-LU	18 x 18	150	60	0.005	2	10	64	\$1,148	
CAPP1U-100GG-LU	24 x 24	150	60	0.005	2	10	121	\$2,292	
CAPP1U-100HH-LU	30 x 30	150	60	0.005	2	10	187	\$2,833	
CAPP1U-200EE-LU	18 x 18	200	100	0.01	5	10	64	\$1,148	
CAPP1U-250GG-LU	24 x 24	300	150	0.01	5	10	121	\$2,292	
CAPP1U-250HH-LU	30 x 30	300	150	0.01	5	10	187	\$2,833	
CAPP1U-500GG-LU	24 x 24	600	300	0.02	10	10	121	\$2,292	
CAPP1U-500HH-LU	30 x 30	600	300	0.02	10	10	187	\$2,833	
CAPP1U-1000HH-LU	30 x 30	1500	600	0.05	20	10	187	\$2,833	

Platform Selection: 60,000d models								
	(in.)	(lb)	(kg)	(lb)	(g)	(ft)	(lb)	Price in USD
CAAPP1-6DC-S	12.6 x 9.4	15	6	0.0002	0.1	10	18	\$977
CAAPP1-15DC-S	12.6 x 9.4	30	15	0.0005	0.2	10	18	\$1,093
CAAPP1-30ED-S	15.7 x 11.8	60	30	0.001	0.5	10	29	\$1,254
CAAPP1-30FE-S	19.7 x 15.7	60	30	0.001	0.5	10	52	\$1,640
CAAPP1-60ED-S	15.7 x 11.8	150	60	0.002	1.0	10	29	\$1,408
CAAPP1-60FE-S	19.7 x 15.7	150	60	0.002	1.0	10	52	\$1,794
CAAPP1-60GF-S	25.6 x 19.7	150	60	0.002	1.0	10	100	\$2,527
CAAPP1-60IG-S	31.5 x 23.6	150	60	0.002	1.0	10	139	\$2,887
CAAPP1-150FE-S	19.7 x 15.7	300	150	0.005	2.0	10	52	\$1,961
CAAPP1-150GF-S	25.6 x 19.7	300	150	0.005	2.0	10	100	\$2,688
CAAPP1-150IG-S	31.5 x 23.6	300	150	0.005	2.0	10	139	\$3,054

\*Must be ordered with CAIS indicator + YDI02C-WP10 high performance A/D converter

# Stainless Steel Combics Platforms



Platform Selection								
Order no.	Dimensions	Capacity		Readability		Cable Platf.	Shipping Weight	Price in USD
		(in.)	(lb)	(kg)	(lb)			
CAPS1U-10CC-LU	10x 10	15	6	0.0005	0.0002	10	16	\$1,062
CAPS1U-20CC-LU	10x 10	30	15	0.001	0.0005	10	16	\$1,062
CAPS1U-50CC-LU	10x 10	60	30	0.002	0.001	10	16	\$1,062
CAPS1U-50DD-LU	12 x 12	60	30	0.002	0.001	10	24	\$1,153
CAPS1U-50EE-LU	18 x 18	60	30	0.002	0.001	10	62	\$1,426
CAPS1U-100DD-LU	12 x 12	150	60	0.005	0.002	10	24	\$1,153
CAPS1U-100EE-LU	18 x 18	150	60	0.005	0.002	10	62	\$1,426
CAPS4U-100GG-LU	24 x 24	150	60	0.005	0.002	10	121	\$5,012
CAPS4U-100HH-LU	30 x 30	150	60	0.005	0.002	10	187	\$5,276
CAPS1U-200EE-LU	18 x 18	200	100	0.01	0.005	10	62	\$1,426
CAPS4U-250GG-LU	24 x 24	300	150	0.01	0.005	10	121	\$5,012
CAPS4U-250HH-LU	30 x 30	300	150	0.01	0.005	10	187	\$5,276
CAPS4U-500GG-LU	24 x 24	600	300	0.02	0.01	10	121	\$5,012
CAPS4U-500HH-LU	30 x 30	600	300	0.02	0.01	10	187	\$5,276
CAPS4U-1000HH-LU	30 x 30	1500	600	0.05	0.02	10	187	\$5,276
CAPS4U-1000KK-LU	36 x 36	1500	600	0.05	0.02	20	250	\$5,923
CAPS4U-1000NN-LU	48 x 48	1500	600	0.05	0.02	20	390	\$7,157
CAPS4U-2500KK-LU	36 x 36	3000	1500	0.1	0.05	20	250	\$5,923
CAPS4U-2500NN-LU	48 x 48	3000	1500	0.1	0.05	20	390	\$7,157
CAPS4U-5000KK-LU	36 x 36	6000	3000	0.2	0.1	20	250	\$5,923
CAPS4U-5000NN-LU	48 x 48	6000	3000	0.2	0.1	20	390	\$7,108



Options: Combics Stainless Steel Platforms \*European Sizes Only

\*All options listed require fabrication in Germany with European sizes. The top section indicates the European size platform (in mm) and price. Prices of the options are listed down the right-hand column. Add the two prices together to get the pricing of the platform with the requested option. A list of the corresponding capacities can be found at the bottom of the page. Lead time is approximately 6-8 weeks.

		DC	ED	FE	GF	IG	II	LI	LL	NL	NN	RN	RR	WR	Price In USD	
Option		320 x 240 \$1,660	400 x 300 \$2,539	500 x 400 \$4,105	650 x 500 \$5,353	800 x 600 \$6,156	800 x 800 \$7,389	1000 x 800 \$7,924	1000 x 1000 \$8,299	1250 x 1000 \$8,567	1250 x 1250 \$11,580	1500 x 1250 \$11,915	1500 x 1500 \$12,863	2000 x 1500 \$15,237		
Load plate Finishing (only one choice possible)																
Electropolished 316 Ti Stainless Steel	R2	X													\$498	
			X													\$590
				X												\$723
					X											\$983
						X										\$1,107
							X									\$2,228
								X	X	X						\$2,442
											X					\$2,945
												X	X			\$2,994
												X		\$3,585		
Others																
Pressure Lift System	T1						X	X	X						\$1,367	
										X					\$1,444	
											X	X			\$1,530	
													X		\$1,523	
														X		\$1,661
Certificates																
Test Report / Certificate	Z3	X	X	X	X	X	X	X	X	X	X	X	X	X	\$268	
Platform Frame Finishing (Not Pit Frame)																
Platform Frame in electropolished 316 Ti stainless steel	S2	X													\$1,128	
			X												\$1,533	
				X											\$2,141	
					X										\$2,425	
						X									\$2,846	
							X	X	X						\$3,871	
										X					\$4,161	
											X	X			\$4,450	
													X		\$4,739	
												X	\$4,816			

Platform Capacities in kg :

CAAPS1: CAAPS4:  
 DC-3/6/15 GF-60/150/300 LI-300/600 NN-150/300/600/1500/3000 WR-600/1500/3000  
 ED- 30/60 IG-60/150/300/600 LL-150/300/600 RN-600/1500/3000  
 FE-30/60/150 II-150/300/600 NL-600 RR-600/1500/3000  
 Example: CAAPS1-6DC or CAAPS4-300II

# Accessories: Combics Platforms



Description	Order No.	Price in USD
Connection kit - male and female connector for connecting an analog platform to an indicator (disconnectable plug-in)	YAS99I	\$365
<b>Mechanical Accessories</b>		
Bench Mount Bracket for 10" x10", 12" x12", and 18" x18 " platforms	YDH12CWSUS	\$93
Wall Mount Bracket	YDH02CISUS	\$93
Panel (cabinet) mount kit, with gasket, for all Combics indicators	YAS07CI	\$316
<b>Floor mounted</b>		
Floor mounted column for any platform 24" x18" or larger. Options include 43" high column	YDH03CISUS	\$355
4-Leg base for column	YBP03CIS	\$232
Retainer, for bar code scanner	YBH01CWS	\$242
Printer stand for column	YPP01CWS	\$364
<b>Column, for attaching Indicator-platform</b>		
*Note- columns for 3 platform sizes are interchangeable		
Post mount assembly for 10" x10" platforms, 13" High	YDH01CWSUS	\$216
Post mount assembly for 12" x12" platforms, 19" High	YDH02CWSUS	\$232
Post mount assembly, for 18" x18" platforms, 29" High	YDH03CWSUS	\$268
<b>Drive on Ramp, Stainless, Smooth - For Platform sizes:</b>		
For Platforms 24" x 24" (GG)	YAR-CWS-24US	\$1,775
For Platforms 30" x 30" (HH)	YAR-CWS-30US	\$2,047
For Platforms 36" x 36" (KK)	YAR-CWS-36US	\$2,459
For Platforms 48" x 48" (NN)	YAR-CWS-48US	\$4,100
<b>Drive on Ramp, Stainless, Treadplate - For Platform sizes:</b>		
For Platforms 24" x 24" (GG)	YAR-CWST-24US	\$1,667
For Platforms 30" x 30" (HH)	YAR-CWST-30US	\$2,039
For Platforms 36" x 36" (KK)	YAR-CWST-36US	\$2,352
For Platforms 48" x 48" (NN)	YAR-CWST-48US	\$3,993
<b>Pit Frame, Painted Steel - For platform sizes:</b>		
30" x 24" (HG)	YEG-HG-PUS	\$924
36" x 36" (KK)	YPF01KKP-MUS	\$1,027
<b>Pit Frame, Stainless Steel - For platform sizes:</b>		
30" x 24" (HG)	YEG-HG-SUS	\$2,200
30" x 30" (HH)	YEG-HH-SUS	\$2,461
36" x 36" (KK)	YPF01KKT-MUS	\$2,690
48" x 48" (NN)	YPF01NNT-MUS	\$3,233
<b>Pit Frame, Stainless Steel, European Platforms for sizes:</b>		
800 x 600 mm (IG)	YEG01CWS	\$2,427
800 x 800 mm (II)	YEG08CWS	\$2,684
1,000 x 800 mm (LI)	YEG07CWS	\$2,690
1,000 x 1,000 mm (LL)	YEG02CWS	\$2,888
1,250 x 1,000 mm (NL)	YEG03CWS	\$3,193
1,250 x 1,250 mm (NN)	YEG09CWS	\$3,354
1,500 x 1,250 mm (RN)	YEG04CWS	\$3,440
1,500 x 1,500 mm (RR)	YEG05CWS	\$3,815
2,000 x 1,500 mm (WR)	YEG06CWS	\$4,120



Recommended Spare Parts			
Order no.	Description	GWT #	Price in USD
00005001.1	15 kg Load cell for CAPP1U-10CC	011242	\$136
00005002.1	30 kg Load Cell for CAPP1U-20/50CC	011243	\$136
00005004.1	50 kg Load cell for CAPP1U-50DD	011244	\$125
00005006.1	50 kg Load Cell for CAPP1U-50EE	011246	\$201
00005005.1	100 kg Load Cell for CAPP1U-100DD	011245	\$125
00005007.1	100 kg Load cell for CAPP1U-100EE	011247	\$206
00005014.1	150 kg Load Cell for CAPP1U-100[GG,HH]	011252A	\$272
00005008.1	200 kg Load Cell for CAPP1U-200EE	011248	\$206
00005015.1	250 kg Load Cell for CAPP1U-250[GG,HH]	011253A	\$272
00005016.1	500 kg Load Cell for CAPP1U-500[GG,HH]	011290A	\$272
00005017.1	635 kg Load Cell for CAPP1U-1000HH	011468A	\$354
00005009.1	15 kg Load cell for CAPS1U-10CC	011294A	\$294
00005010.1	30 kg Load Cell for CAPS1U-20CC	011295A	\$294
00005011.1	50 kg Load Cell for CAPS1U-50[CC,DD,EE]	011296A	\$294
00005012.1	100 kg Load Cell for CAPS1U-100[DD,EE]	011297A	\$294
00005048.1	50 kg Load Cell KitCAPS4U-[100,200,250][GG,HH]	011272	\$340
00005049.1	100 kg Load Cell Kit for CAPS4U-500[GG,HH]	011273	\$345
00005050.1	200 kg Load Cell Kit for CAPS4U-1000HH	011274	\$260
00005018.1	500 lb Load Cell Kit for CAPS4U-1000[KK,NN]	011462	\$342
00005019.1	1250 lb Load Cell Kit for CAPS4U-2500[KK,NN]	011468.1	\$278
00005020.1	2500 lb Load Cell Kit for CAPS4U-5000[KK,NN]	011469.1	\$272



## Minebea Intec OPC-UA Server

Minebea Intec OPC-UA Server is a software for IT connection of scales. The server is developed according to the " OPC UA Companion Specification for Weighing Technology" (VDMA 40200:2020-06), which was defined in a working group of leading scale manufacturers under the leadership of VDMA. Release and management of this specification by the OPC Foundation.

- Compatible with the products: Combics, Signum, Midrics, IS platform.
- Other scales on request
- The scales are connected via serial RS232 or Ethernet TCP/IP interface
- The software uses the XBPI protocol of the scales
- The data of the " simple scale" are transmitted,
- compatible with Windows 10 and Windows Server 2016, other systems on request

### Equipment Supplied

- The setup is available for download on our website: <https://www.minebea-intec.com>
- The license codes are sent by mail.
- The software includes a 30 days demo

Order no.	Description	Price in USD
62OPC-UA-01	OPC-UA Server for connection of 1 to 5 scales	\$655
62OPC-UA-06	OPC-UA Server for connection of 6 to 10 scales	\$1,309
62OPC-UA-11	OPC-UA Server for connection of more than 11 scales	\$1,964





Painted Steel								
Order no.	Capacity		Readability		Dimensions		Cable platf.	Price in USD
	kg	lb	g	lb	mm	In.		
MW1P1U-3DC-L	3	6	0.2	0.0005	320 x 240	12.5 x 9.5	2,5 m	\$1,404
MW1P1U-6DC-L	6	15	0.5	0.001	320 x 240	12.5 x 9.5	2,5 m	\$1,404
MW1P1U-15DC-L	15	30	1	0.002	320 x 240	12.5 x 9.5	2,5 m	\$1,404
MW2P1U-3DC-L	3	6	0.2	0.0005	320 x 240	12.5 x 9.5	2,5 m	\$1,409
MW2P1U-6DC-L	6	15	0.5	0.001	320 x 240	12.5 x 9.5	2,5 m	\$1,409
MW2P1U-15DC-L	15	30	1	0.002	320 x 240	12.5 x 9.5	2,5 m	\$1,409
MW1P1U-30ED-L	30	60	2	0.005	400 x 300	15.75 x 11.8	2,5 m	\$1,535
MW1P1U-60ED-L	60	120	5	0.01	400 x 300	15.75 x 11.8	2,5 m	\$1,535
MW2P1U-30ED-L	30	60	2	0.005	400 x 300	15.75 x 11.8	2,5 m	\$1,473
MW2P1U-60ED-L	60	120	5	0.01	400 x 300	15.75 x 11.8	2,5 m	\$1,473
MW1P1U-30FE-L	30	60	2	0.005	500 x 400	19.5 x 15.75	2,5 m	\$1,746
MW1P1U-60FE-L	60	120	5	0.01	500 x 400	19.5 x 15.75	2,5 m	\$1,746
MW1P1U-150FE-L	150	300	10	0.02	500 x 400	19.5 x 15.75	2,5 m	\$1,746
MW2P1U-30FE-L	30	60	2	0.005	500 x 400	19.5 x 15.75	2,5 m	\$1,741
MW2P1U-60FE-L	60	120	5	0.01	500 x 400	19.5 x 15.75	2,5 m	\$1,741
MW2P1U-150FE-L	150	300	10	0.02	500 x 400	19.5 x 15.75	2,5 m	\$1,741

- NOTES:
- Frame in Stainless Steel
  - Material Frame in galvanized steel
  - IP65

Stainless Steel								
Order no.	Capacity		Readability		Dimensions		Cable platf.	Price in USD
	kg	lb	g	lb	mm	In.		
MW1S1U-3DC-L	3	6	0.2	0.0005	320 x 240	12.5 x 9.5	2,5 m	\$2,055
MW1S1U-6DC-L	6	15	0.5	0.001	320 x 240	12.5 x 9.5	2,5 m	\$2,055
MW1S1U-15DC-L	15	30	1	0.002	320 x 240	12.5 x 9.5	2,5 m	\$2,055
MW2S1U-3DC-L	3	6	0.2	0.0005	320 x 240	12.5 x 9.5	2,5 m	\$2,003
MW2S1U-6DC-L	6	15	0.5	0.001	320 x 240	12.5 x 9.5	2,5 m	\$2,003
MW2S1U-15DC-L	15	30	1	0.002	320 x 240	12.5 x 9.5	2,5 m	\$2,003
MW1S1U-30ED-L	30	60	2	0.005	400 x 300	15.75 x 11.8	2,5 m	\$2,024
MW1S1U-60ED-L	60	120	5	0.01	400 x 300	15.75 x 11.8	2,5 m	\$2,024
MW2S1U-30ED-L	30	60	2	0.005	400 x 300	15.75 x 11.8	2,5 m	\$2,047
MW2S1U-60ED-L	60	120	5	0.01	400 x 300	15.75 x 11.8	2,5 m	\$2,047
MW1S1U-30FE-L	30	60	2	0.005	500 x 400	19.5 x 15.75	2,5 m	\$2,354
MW1S1U-60FE-L	60	120	5	0.01	500 x 400	19.5 x 15.75	2,5 m	\$2,354
MW1S1U-150FE-L	150	300	10	0.02	500 x 400	19.5 x 15.75	2,5 m	\$2,354
MW2S1U-30FE-L	30	60	2	0.005	500 x 400	19.5 x 15.75	2,5 m	\$2,631
MW2S1U-60FE-L	60	120	5	0.01	500 x 400	19.5 x 15.75	2,5 m	\$2,631
MW2S1U-150FE-L	150	300	10	0.02	500 x 400	19.5 x 15.75	2,5 m	\$2,631

- NOTES:
- Made completely of 304 Stainless Steel
  - IP67



Painted Steel							
Order no.	Capacity	Readability	Dimensions	Material	Material frame	Cable	Price in USD
	kg	g	mm	load plate			
MW1P1U-3DC-LCA	3	1	320 x 240	St. steel	Galvanized	2,5 m	\$1,404
MW1P1U-6DC-LCA	6	2	320 x 240	St. steel	Galvanized	2,5 m	\$1,404
MW1P1U-15DC-LCA	15	5	320 x 240	St. steel	Galvanized	2,5 m	\$1,404
MW2P1U-3DC-LCA	3	1	320 x 240	St. steel	Galvanized	2,5 m	\$1,409
MW2P1U-6DC-LCA	6	2	320 x 240	St. steel	Galvanized	2,5 m	\$1,409
MW2P1U-15DC-LCA	15	5	320 x 240	St. steel	Galvanized	2,5 m	\$1,409
MW1P1U-30ED-LCA	30	10	400 x 300	St. steel	Galvanized	2,5 m	\$1,535
MW1P1U-60ED-LCA	60	20	400 x 300	St. steel	Galvanized	2,5 m	\$1,535
MW2P1U-30ED-LCA	30	10	400 x 300	St. steel	Galvanized	2,5 m	\$1,473
MW2P1U-60ED-LCA	60	20	400 x 300	St. steel	Galvanized	2,5 m	\$1,473
MW1P1U-30FE-LCA	30	10	500 x 400	St. steel	Galvanized	2,5 m	\$1,746
MW1P1U-60FE-LCA	60	20	500 x 400	St. steel	Galvanized	2,5 m	\$1,746
MW1P1U-150FE-LCA	150	50	500 x 400	St. steel	Galvanized	2,5 m	\$1,746
MW2P1U-30FE-LCA	30	10	500 x 400	St. steel	Galvanized	2,5 m	\$1,741
MW2P1U-60FE-LCA	60	20	500 x 400	St. steel	Galvanized	2,5 m	\$1,741
MW2P1U-150FE-LCA	150	50	500 x 400	St. steel	Galvanized	2,5 m	\$1,741

Stainless Steel							
Order no.	Capacity	Readability	Dimensions	Material	Material frame	Cable	Price in USD
	kg	g	mm	load plate			
MW1S1U-3DC-LCA	3	1	320 x 240	St. steel	St. steel	2,5 m	\$2,055
MW1S1U-6DC-LCA	6	2	320 x 240	St. steel	St. steel	2,5 m	\$2,055
MW1S1U-15DC-LCA	15	5	320 x 240	St. steel	St. steel	2,5 m	\$2,055
MW2S1U-3DC-LCA	3	1	320 x 240	St. steel	St. steel	2,5 m	\$2,003
MW2S1U-6DC-LCA	6	2	320 x 240	St. steel	St. steel	2,5 m	\$2,003
MW2S1U-15DC-LCA	15	5	320 x 240	St. steel	St. steel	2,5 m	\$2,003
MW1S1U-30ED-LCA	30	10	400 x 300	St. steel	St. steel	2,5 m	\$2,024
MW1S1U-60ED-LCA	60	20	400 x 300	St. steel	St. steel	2,5 m	\$2,024
MW2S1U-30ED-LCA	30	10	400 x 300	St. steel	St. steel	2,5 m	\$2,047
MW2S1U-60ED-LCA	60	20	400 x 300	St. steel	St. steel	2,5 m	\$2,047
MW1S1U-30FE-LCA	30	10	500 x 400	St. steel	St. steel	2,5 m	\$2,354
MW1S1U-60FE-LCA	60	20	500 x 400	St. steel	St. steel	2,5 m	\$2,354
MW1S1U-150FE-LCA	150	50	500 x 400	St. steel	St. steel	2,5 m	\$2,354
MW2S1U-30FE-LCA	30	10	500 x 400	St. steel	St. steel	2,5 m	\$2,631
MW2S1U-60FE-LCA	60	20	500 x 400	St. steel	St. steel	2,5 m	\$2,631
MW2S1U-150FE-LCA	150	50	500 x 400	St. steel	St. steel	2,5 m	\$2,631



Order no.		Price in USD
Midrics 1 Indicator (Table Top Version with U-Bracket and RS232)		
MIS1UR-V1	Display 20mm LCD, backlit, Material: stainless steel, ingress protection: IP65	\$685

Midrics 2 Indicator (Table Top Version with U-Bracket and RS232)		
MIS2UR-V2	With selectable application programming, display 20mm LCD, backlit, numerical keyboard, applications: weighing, counting, checkweighing, sorting (3 or 5 classes), totalizing, net-total, animal weighing, weighing in percent, neutral measurement, material: stainless steel, ingress protection: IP65	\$773

Midrics 1 Indicator (US Version, Rectangular Housing with Wall Bracket & Internal Battery Pack)		
MIS1U-L9	Display 20mm LCD, backlit, Material: stainless steel, ingress protection: IP65 Does not come standard with RS232	\$1,150

Midrics 2 Indicator (US Version, Rectangular Housing with Wall Bracket & Internal Battery Pack)		
MIS2U-L9	With selectable application programming, display 20mm LCD, backlit, numerical keyboard, applications: weighing, counting, checkweighing, sorting (3 or 5 classes), totalizing, net-total, animal weighing, weighing in percent, neutral measurement, material: stainless steel, ingress protection: IP65 Does not come standard with RS232	\$1,275

Midrics Indicators are Class III NTEP approved



## Accessories Midrics Indicators

Description	Order no.	Price In USD
<b>Interfaces</b>		
<b>COM 1:</b> (Standard RS232 on all MIS1UR-V1 and MIS2UR-V2 units)		
RS232 interface + Clock	YDO01M-232CLK	\$191
<b>UniCOM:</b>		
Interface RS232	YDO01M-232CO	\$344
RS485/422 interface	YDO01M-485	\$344
Digital Input 5/ Output 5 opto isolated	YDO01M-IO	\$823
Analog current output, 0-20 mA, 4-20 mA, 0-10V, 16-bit	YDA01M-20MA	\$475
Internal Ethernet Interface module 10/100Mbit TCP/IP	YDO01M-EN	\$802
<b>External data Interface adapters</b>		
Connecting cable from RS232 to USB-Connector, 2 m	YCC01-USBM2	\$272
<b>Printers</b>		
Data Printer	YDP21	\$1,066
Strip and Label Printer, Thermal	ZD420d	\$2,195
<b>Others</b>		
Dust covers (2 units)	YDC01SW	\$81
Cable gland (PG) for cables 4.5 up to 9 mm, IP67 protected, M16 x 1.5	YAS04CIS	\$68
Panel Mount Kit	YAS03MI	\$201
<b>Power Supply</b>		
24 volt module	YAS02MI	\$207
<b>Cables</b>		
Connecting cable with screwed cable gland for printer YDP12/04IS, open ended cable / 9-pin D-Sub male connector, 6m	YCC02-D09M6	\$272
Connecting cable with screwed cable gland for printer YDO03 or PC, open ended cable / 9-pin D-Sub female connector	YCC02-D09F6	\$272
Connecting cable for accessories- 25 pin D-SUB female	YCC02-D25F6	\$272
Connecting cable for accessories and IS platforms, - 12-pin round female connector, 6 m	YCC02-R12F6	\$272
Connecting cable to open ended cable, 6 m	YCC02-RELAIS02	\$229
Ethernet connecting cable with RJ45 male connector, 7m	YCC02-RJ45M7	\$229
Connecting cable for analogue output (4-20mA) for YDA01C-20MA, cable with open ends, e.g. 5x = 5 m	6906926	\$235
<b>Mechanical Accessories</b>		
Stainless steel indicator holder for bench top fixing, only for platform sizes 320x240 mm (DC), 400x300 mm (ED) and 500x 400 mm (FE)	YDH12CWSUS	\$93
Connection kit - male and female connector for connecting an analog platform to an indicator (disconnectable plug-in)	YAS99I	\$365
Brackets for wall mounting, stainless steel, tiltable	YDH02CISUS	\$93
Base for installing floor-mounted column, stainless steel	YBP03CIS	\$232
Floor-mounted column, stainless steel, height: 1.1m	YDH03CISUS	\$355
Retainer for bar code scanner, for attachment to bench stand	YBH01CWS	\$242
Plate for attaching indicator and printer to bench stand	YPP01CWS	\$364
<b>Column, stainless steel, for attaching indicator to platform, for sizes..</b>		
320 x 240mm, 330mm height (13")	YDH01CWSUS	\$216
400 x 300 & 500 x 400, 500mm height (19")	YDH02CWSUS	\$232
500 x 400, 750mm height (29.5")	YDH03CWSUS	\$268



Painted Steel								
Order no.	Capacity		Readability		Dimensions		Cable platf. (m)	Price in USD
	kg	lb	g	lb	mm	in.		
MAPP1U-3DC-LU	3	6	0.2	0.0005	320 x 240	12.5 x 9.5	2.5	\$551
MAPP1U-6DC-LU	6	15	0.5	0.001	320 x 240	12.5 x 9.5	2.5	\$551
MAPP1U-15DC-LU	15	30	1	0.002	320 x 240	12.5 x 9.5	2.5	\$551
MAPP1U-30ED-LU	30	60	2	0.005	400 x 300	15.75 x 11.8	2.5	\$697
MAPP1U-30FE-LU	30	60	2	0.005	500 x 400	19.5 x 15.75	2.5	\$901
MAPP1U-60ED-LU	60	120	5	0.01	400 x 300	15.75 x 11.8	2.5	\$697
MAPP1U-60FE-LU	60	120	5	0.01	500 x 400	19.5 x 15.75	2.5	\$901
MAPP1U-150FE-LU	150	300	10	0.02	500 x 400	19.5 x 15.75	2.5	\$901

- NOTES:
- All Midrics platforms are Measurement Canada approved for 3,000 e
  - Frame in Stainless Steel
  - Material Frame in galvanized steel
  - IP65

Stainless Steel								
Order no.	Capacity		Readability		Dimensions		Cable platf. (m)	Price in USD
	kg	lb	g	lb	mm	in.		
MAPS1U-3DC-LU	3	6	0.2	0.0005	320 x 240	12.5 x 9.5	2.5	\$1,174
MAPS1U-6DC-LU	6	15	0.5	0.001	320 x 240	12.5 x 9.5	2.5	\$1,174
MAPS1U-15DC-LU	15	30	1	0.002	320 x 240	12.5 x 9.5	2.5	\$1,174
MAPS1U-30ED-LU	30	60	2	0.005	400 x 300	15.75 x 11.8	2.5	\$1,211
MAPS1U-30FE-LU	30	60	2	0.005	500 x 400	19.5 x 15.75	2.5	\$1,540
MAPS1U-60ED-LU	60	120	5	0.01	400 x 300	15.75 x 11.8	2.5	\$1,211
MAPS1U-60FE-LU	60	120	5	0.01	500 x 400	19.5 x 15.75	2.5	\$1,540
MAPS1U-150FE-LU	150	300	10	0.02	500 x 400	19.5 x 15.75	2.5	\$1,540

- NOTES:
- All Midrics platforms are Measurement Canada approved for 3,000 e
  - Made completely of 304 Stainless Steel
  - IP67



## MAPP4U Painted Floor Scales

Painted Steel					
Order no.	Capacity	Dimensions	Material	Shipping Weight	Price in USD
	lb			(lb)	
MAPP4U-2500KK-N	2,500	36" x 36"	Painted	235	\$1,607
MAPP4U-5000KK-N	5,000	36" x 36"	Painted	235	\$1,607
MAPP4U-10000KK-N	10,000	36" x 36"	Painted	235	\$1,607
MAPP4U-2500NN-N	2,500	48" x 48"	Painted	391	\$1,684
MAPP4U-5000NN-N	5,000	48" x 48"	Painted	391	\$1,684
MAPP4U-10000NN-N	10,000	48" x 48"	Painted	391	\$1,684
MAPP4U-2500RR-N	2,500	60" x 60"	Painted	548	\$2,158
MAPP4U-5000RR-N	5,000	60" x 60"	Painted	548	\$2,158
MAPP4U-10000RR-N	10,000	60" x 60"	Painted	548	\$2,215

- NOTES:
- All MAPP4U platforms are NTEP approved for 5,000d
  - All Platforms come with 15-foot home run cable
  - Items not in stock carry a 1-week lead time

Accessories		Price in USD
Order no.	Description	
YEG3MAPPU	3' Pit frame for MAPP4U-KK platforms	\$348
YEG4MAPPU	4' Pit frame for MAPP4U-NN platforms	\$466
YEG5MAPPU	5' Pit frame for MAPP4U-RR platforms	\$584
YBG4MAPPU	4" bumper guard (one side)	\$221
YBG5MAPPU	5" bumper guard (one side)	\$335
YAR33MAPPU	3' x 3' Ramp for MAPP4U-KK platforms	\$370
YAR34MAPPU	3' x 4' Ramp for MAPP4U-KK platforms	\$413
YAR43MAPPU	4' x 3' Ramp for MAPP4U-NN platforms	\$461
YAR44MAPPU	4' x 4' Ramp for MAPP4U-NN platforms	\$488
YAR53MAPPU	5' x 3' Ramp for MAPP4U-RR platforms	\$509
YAR54MAPPU	5' x 4' Ramp for MAPP4U-RR platforms	\$702

Recommended Spare Parts		Price in USD
Order no.	Description	
69BT7001	Junction box with summing board	\$232
69BT7002	Foot for 3 x 3, 4 x 4, 5 x 5	\$82
69BT7003	1,000 lb cell	\$211
69BT7004	2,500 lb cell	\$211
69BT7005	4,000 lb cell	\$211
69BT7006	5,000 lb cell	\$211
69BT7007	Summing board	\$124



Mild Steel with MIS2-U								
Order no.	Dimensions (in.)	Capacity		Readability		Cable Platf. (ft)	Shipping Weight (lb)	Price in USD
		(lb)	(kg)	(lb)	(kg)			
MW2P1UE-10CC-I	10 x 10	15	6	0.0005	0.0002	10	18	\$1,540
MW2P1UE-50DD-I	12 x 12	60	30	0.002	0.001	10	22	\$1,658
MW2P1UE-100EE-I	18 x 18	150	60	0.005	0.002	10	63	\$1,864
MW2P1URE-250GG-I*	24 x 24	300	150	0.01	0.005	10	118	\$3,291
Stainless Steel with MIS2-U								
Order no.	Dimensions (in.)	Capacity		Readability		Cable Platf. (ft)	Shipping Weight (lb)	Price in USD
		(lb)	(kg)	(lb)	(kg)			
MW2S1UE-10CC-I	10 x 10	15	6	0.0005	0.0002	10	18	\$1,906
MW2S1UE-50DD-I	12 x 12	60	30	0.002	0.001	10	22	\$1,978
MW2S1UE-100EE-I	18 x 18	150	60	0.005	0.002	10	63	\$2,251
MW2S4URE-250GG-I*	24 x 24	300	150	0.01	0.005	10	118	\$6,134
Accessories:								Price in USD
Order no.	Description							
YDH03CISUS	43" floor mounted column							\$355
YBP03CIS	4-leg base for column							\$232
YPP01CWS	Printer stand for column							\$364
YDH01CWSUS	Post mount assembly for 10" x10" platforms, 13" High							\$216
YDH02CWSUS	Post mount assembly for 12" x12" platforms, 19" High							\$232
YDH03CWSUS	Post mount assembly, for 18" x18" platforms, 29" High							\$268
YDH12CWSUS	Bench mount bracket							\$93
YDH02CISUS	Wall mount bracket							\$93

\* Comes with MIS2UR







Model Number	Capacity (kg)	Readability (g)	Application Level/Display	Protection Level	Pan Size (in.)	Shipping Wgt. (lb)	Price USD
<b>Signum Models Regular, Application level 1 (IP65)</b>							
SIWRDCP-V6	3	0.1	Appl level 1	IP65	13.7 x 9.5	29	\$1,790
SIWRDCP-V7	6	0.2	Appl level 1	IP65	13.7 x 9.5	29	\$1,800
SIWRDCP-V8	15	0.5	Appl level 1	IP65	13.7 x 9.5	29	\$1,821
SIWRDCP-V9	35	1.0	Appl level 1	IP65	13.7 x 9.5	29	\$1,840
SIWRDCP-V10	60	2.0	Appl level 1	IP65	13.7 x 9.5	29	\$1,862
<b>Signum Models Regular, Application 1 (IP43)</b>							
SIWRDCP-V40	3	0.1	Appl level 1	IP43	13.7 x 9.5	29	\$1,457
SIWRDCP-V41	6	0.2	Appl level 1	IP43	13.7 x 9.5	29	\$1,469
SIWRDCP-V42	15	0.5	Appl level 1	IP43	13.7 x 9.5	29	\$1,502
SIWRDCP-V43	35	1.0	Appl level 1	IP43	13.7 x 9.5	29	\$1,518
<b>Signum Models Regular, Application Level 3 (Weighing Systems)</b>							
SIWRDCP-V20	6	0.2	Appl level 3	IP65	13.7 x 9.5	29	\$2,509
SIWRDCP-V21	15	0.5	Appl level 3	IP65	13.7 x 9.5	29	\$2,531
SIWRDCP-V22	35	1.0	Appl level 3	IP65	13.7 x 9.5	29	\$2,548
SIWRDCP-V23	60	2.0	Appl level 3	IP65	13.7 x 9.5	29	\$2,571
<b>Signum Models Advanced, Application level 1 (IP65)</b>							
SIWADCP-V3	7	0.1	Appl level 1	IP65	13.7 x 9.5	29	\$2,347
SIWADCP-V24	16	0.2	Appl level 1	IP65	13.7 x 9.5	29	\$2,358
SIWADCP-V25	35	0.5	Appl level 1	IP65	13.7 x 9.5	29	\$2,392
<b>Signum Models Advanced, Application level 1 (IP43)</b>							
SIWADCP-V40	7	0.1	Appl level 1	IP43	13.7 x 9.5	29	\$2,015
SIWADCP-V41	16	0.2	Appl level 1	IP43	13.7 x 9.5	29	\$2,027
SIWADCP-V42	35	0.5	Appl level 1	IP43	13.7 x 9.5	29	\$2,060
SIWADCP-V43	65	1.0	Appl level 1	IP43	13.7 x 9.5	29	\$2,072
<b>Signum Models Advanced, Application level 3 (IP65)</b>							
SIWADCP-V4	7	0.1	Appl level 3	IP65	13.7 x 9.5	29	\$3,006
SIWADCP-V5	35	0.5	Appl level 3	IP65	13.7 x 9.5	29	\$3,006
SIWADCP-V6	65	1.0	Appl level 3	IP65	13.7 x 9.5	29	\$3,006
<b>Signum Models Supreme, Application 1 (IP65)</b>							
SIWSBBP-V16	3.1	0.01	Appl level 1	IP65	7.1 x 7.1	16.5	\$4,463
SIWSBBP-V17	6.1	0.01	Appl level 1	IP65	7.1 x 7.1	16.5	\$5,213
SIWSDCP-V18	16	0.1	Appl level 1	IP65	13.7 x 9.5	29	\$5,343
SIWSDCP-V19	35	0.1	Appl level 1	IP65	13.7 x 9.5	29	\$5,713



# Signum Supreme High Resolution, Painted (SIWSBBP)



Example price formulation:	Application	Appl. level 2	SIWSBBP-2	3,209
SIWSBBP-2-3-H	Platform	3 kg, L =180 mm x B = 180 mm	-3	509
	Resolution	0.01 g Readability (300.000 d)	-H	638
			<b>Total</b>	<b>\$4,356</b>

## Price Formation: Part 1 + Part 2 + Part 3

Part 1: Selection of the application level			
Order no.	Application Level		Price in USD
SIWSBBP-1	Appl. level 1	6-buttons keyboard, 14-segments display, weighing, RS232-interface	\$ 2,995
SIWSBBP-2	Appl. level 2	14-buttons keyboard, 14-segments display plus application symbols, weighing, dynamic weighing, counting, sum, checking,RS232-interface	\$ 3,209
SIWSBBP-3	Appl. level 3	28-buttons keyboard, 14-segments display plus application symbols, weighing, dynamic weighing, counting, sum, checking, product data memory, identifiers (4x40 characters),RS232-interface	\$ 3,643



Part 2: Selection of the weighing capacity				
Order no.	Capacity		Readability In g -H	Price In USD
-06	0.62 kg		0.001	\$1,903
-3	3.1 kg		0.01	\$509
-6	6.1 kg		0.01	\$1,259



Order no.	Part 3: Selection of the readability	Price in USD
-H	> 100,000 d	\$638



Order no.	Optional	Price in USD
-I65	IP65 Upgrade	\$354
	Note: IP65 Not available on -.06 models	



Example price formulation:	Appl.level 1	SIWSDCP-1	2,225
SIWSDCP-1-35-H	Application		
	Platform	35 kg, L = 350 mm x B = 240	-35
	Resolution	0.1 g readability (350.000 d)	-H
			659
		<b>Total:</b>	<b>\$5,413</b>

Price Formation: Part 1 + Part 2 + Part 3

Part 1: Selection of the application level			
Order no.	Application Level		Price in USD
SIWSDCP-1	Appl.level 1	6-buttons keyboard, 14-segments display, weighing, RS232-interface	\$2,225
SIWSDCP-2	Appl. level 2	14-buttons keyboard, 14-segments display plus application symbols, weighing, dynamic weighing, counting, sum, checking,RS232-interface	\$2,384
SIWSDCP-3	Appl.level 3	28-buttons keyboard, 14-segments display plus application symbols, weighing, dynamic weighing, counting, sum, checking, product data memory, identifiers (4x40 characters),RS232-interface	\$2,822

Part 2: Selection of the weighing capacity					
Order no.	Capacity	Readability in g			Price in USD
		-S	-H		
-6	6kg	0.1			\$1,259
-16	16kg		0.1		\$2,137
-35	35kg		0.1		\$2,529

Order no.	Part 3: Selection of the readability	Price in USD
-S	60,000d readability	\$391
-H	>150,000d readability	\$659

Order no.	Optional	Price in USD
-I65	IP65 Upgrade	\$354

# Signum Supreme Stainless Steel, High resolution (SIWSBBS)



Example price formulation:	Application	Appl. level 2	SIWSBBS-2	5,272
SIWSBBS-2-3-H	Platform	3 kg, L =180 mm x B = 180 mm	-3	399
	Resolution	0.01 g Readability (300.000 d)	-H	679
			sum:	\$6,350

## Price Formation: Part 1 + Part 2 + Part 3

Part 1: Selection of the application level			
Order no.	Application Level		Price in USD
SIWSBBS-1	Appl. level 1	6-buttons keyboard, 14-segments display, weighing, RS232-interface	\$5,053
SIWSBBS-2	Appl. level 2	14-buttons keyboard, 14-segments display plus application symbols, weighing, dynamic weighing, counting, sum, checking,RS232-interface	\$5,272
SIWSBBS-3	Appl. level 3	28-buttons keyboard, 14-segments display plus application symbols, weighing, dynamic weighing, counting, sum, checking, product data memory, identifiers (4x40 characters),RS232-interface	\$5,706

Part 2: Selection of the weighing capacity			
Order no.	Capacity	Readability in -H	Price in USD
-3	3.1kg	0.01	\$399
-6	6.1kg	0.01	\$1,291

Order no.	Part 3: Selection of the readability	Price in USD
-H	> 100,000 d	\$679

# Signum Supreme Stainless Steel (SIWSDCS)



<b>Example price formulation:</b>	Application	Appl.level 1	SIWSDCS-1	3,568.38
SIWSDCS-1-35-H	Platform	35 kg, L = 350 mm x B = 240 mm	-35	2,582.52
	Resolution	0.1 g readability (350.000 d)	-H	634.38
			sum:	\$6,785

## Price Formation: Part 1 + Part 2 + Part 3

Part 1: Selection of the application level			
Order no.	Application Level		Price in USD
SIWSDCS-1	Appl.level 1	6-buttons keyboard, 14-segments display, weighing, RS232-interface	<b>\$3,568</b>
SIWSDCS-2	Appl. level 2	14-buttons keyboard, 14-segments display plus application symbols, weighing, dynamic weighing, counting, sum, checking,RS232-interface	<b>\$3,820</b>
SIWSDCS-3	Appl.level 3	28-buttons keyboard, 14-segments display plus application symbols, weighing, dynamic weighing, counting, sum, checking, product data memory, identifiers (4x40 characters),RS232-interface	<b>\$4,233</b>

Part 2: Selection of the weighing capacity				
Order no.	Capacity	Readability in g		Price in USD
		-S	-H	
-6	6kg	0.1		<b>\$1,297</b>
-16	16kg		0.1	<b>\$2,173</b>
-35	35kg		0.1	<b>\$2,583</b>

Order no.	Part 3: Selection of the readability	Price in USD
-S	60,000d readability	<b>\$391</b>
-H	>100,000d readability	<b>\$634</b>

# Signum Advanced, Painted High Resolution (SIWABBP)



Example price formulation:	Application	Appl. level 2	SIWABBP-2	2,234
SIWABBP-2-8-l	Platform	8 kg, L =180 mm x B = 180 mm	-8	175
	Resolution	0.1 g Readability (80.000 d)	-l	191
			sum:	\$2,600

## Price Formation: Part 1 + Part 2 + Part 3

Part 1: Selection of the application level			
Order no.	Application Level		Price in USD
SIWABBP-1	Appl. level 1	6-buttons keyboard, 14-segments display, weighing, RS232-interface	\$2,009
SIWABBP-2	Appl. level 2	14-buttons keyboard, 14-segments display plus application symbols, weighing, dynamic weighing, counting, sum, checking,RS232-interface	\$2,234
SIWABBP-3	Appl. level 3	28-buttons keyboard, 14-segments display plus application symbols, weighing, dynamic weighing, counting, sum, checking, product data memory, identifiers (4x40 characters),RS232-interface	\$2,668



Part 2: Selection of the weighing capacity				
Order no.	Capacity	Readability in g		Price in USD
		-H	-l	
-1	1.5 kg	0.01		\$107
-8	8 kg		0.1	\$175



Order no.	Part 3: Selection of the readability	Price in USD
-H	150,000d readability	\$634
-l	60,000d readability	\$191



Order no.	Optional	Price in USD
-l65	IP65 Upgrade Note: IP65 Not available on -1 models	\$354

# Signum Advanced, Painted (SIWADCP)



Example price formulation:	Application	Appl.level 1	SIWADCP-1	1,463
SIWADCP-1-7-S	Platform	7 kg, L =350 mm x B = 240 mm	-7	174
	Resolution	0.1 g Readability (70.000 d)	-S	389
			sum:	\$2,025

## Price Formation: Part 1 + Part 2 + Part 3

Part 1: Selection of the application level			
Order no.	Application Level		Price in USD
SIWADCP-1	Appl. Level 1	6-buttons keyboard, 14-segments display, weighing, RS232-interface	\$1,463
SIWADCP-2	Appl. level 2	14-buttons keyboard, 14-segments display plus application symbols, weighing, dynamic weighing, counting, sum, checking,RS232-interface	\$1,688
SIWADCP-3	Appl. Level 3	28-buttons keyboard, 14-segments display plus application symbols, weighing, dynamic weighing, counting, sum, checking, product data memory, identifiers (4x40 characters),RS232-interface	\$2,122

Part 2: Selection of the weighing capacity			
Order no.	Capacity	Readability in -S	Price in USD
-7	7kg	0.1	\$174
-16	16kg	0.2	\$185
-35	35kg	0.5	\$219
-65	65kg	1	\$230

Order no.	Part 3: Selection of the readability	Price in USD
-S	60.000 d Readability	\$389

Order no.	Optional	Price in USD
I65	IP65 Upgrade	\$354



# Signum Advanced Extend (SIWAEDG)



<b>Example price formulation:</b>	Application	Appl. level 3	SIWAEDG-3	2,561
SIWAEDG-3-35-S	Platform	35 kg, L =400 mm x B = 300 mm	-35	235
	Resolution	60,000 d Readability	-S	431
			<b>sum:</b>	<b>\$3,227</b>

Price formation: 1. Part + 2. Part + 3. Part

Part 1: Selection of the application level			
Order no.	Application Level		Price in USD
SIWAEDG-3	Appl. level 3	28-buttons keyboard, 14-segments display plus application symbols, weighing, dynamic weighing, counting, sum, checking, product data memory, identifiers (4x40 characters).RS232-interface	<b>\$2,561</b>

Part 2: Selection of the weighing capacity			
Order no.	Capacity	Readability in g	Price in USD
		-S	
-16	16kg	0.2g	\$235
-35	35kg	0.5g	\$235
-65	65kg	1g	\$398

Order no.	Part 3: Selection of the readability	Price in USD
-S	60.000 d Readability	\$431

# Signum Regular, Painted (SIWRDCP)



<b>Example price formulation:</b>	Application	Appl.level 1	SIWRDCP-1	1,128
SIWRDCP-1-3-I	Platform	3 kg, L = 350 mm x B = 240 mm	-3	163
	Resolution	0.1 g readability (30.000 d)	-I	177
			<b>sum:</b>	<b>\$1,468</b>

## Price Formation: Part 1 + Part 2 + Part 3

Part 1: Selection of the application level			
Order no.	Application Level		Price in USD
SIWRDCP-1	Appl. Level 1	6-buttons keyboard, 14-segments display, weighing, RS232-interface	\$1,128
SIWRDCP-2	Appl. Level 2	14-buttons keyboard, 14-segments display plus application symbols, weighing, dynamic weighing, counting, sum, checking, RS232-interface	\$1,432
SIWRDCP-3	Appl. Level 3	28-buttons keyboard, 14-segments display plus application symbols, weighing, dynamic weighing, counting, sum, checking, product data memory, identifiers (4x40 characters), RS232-interface	\$1,837



Part 2: Selection of the weighing capacity				
Order no.	Capacity	Readability in g		Price in USD
		-I	-R	
-3	3 kg	0.1		\$163
-6	6 kg	0.2	1	\$174
-15	15 kg	0.5	2	\$196
-35	35 kg	1	5	\$213
-60	60 kg	2	10	\$236



Order no.	Part 3: Selection of the readability	Price in USD
-R	6,000 d readability	\$135
-L	15,000d readability	\$151
-I	30,000d readability	\$177



Order no.	Optional	Price in USD
-I65	IP65 Upgrade	\$354



* Options not available for SIWAEDG	Option	Application Level 1	Application Level 2	Application Level3	Price in USD
<b>COM 1 Interface (standard in DCP* und BBP* models)</b>					
RS232	A11	Standard	-	-	\$0
RS232 + Clock (IP43 +IP65)	A31	-	Standard	Standard	\$0
RS232 interface + Clock + PS2-connection (IP43) *5	A32		•	•	\$169
<b>Com 1 Interface (DCS* and BBS* Models)</b>					
RS232 interface + Clock + PS2-connection	A32	Standard	Standard	Standard	\$0

<b>UniCOM interface</b>					
RS232 interface	A1	•	•	•	\$284
RS422 interface	A2	•	•	•	\$284
RS485 interface	A3	•	•	•	\$284
Digital 5 Input / 5 Output opto isolated	A5	•	•	•	\$692
Analog module for analog weighing platform (not in combination with option L9)	A15		•	•	\$616
Analog current output, 0-20 mA, 4-20 mA, 0-10V, 16-bit	A9	•	•	•	\$692
Profibus DP module (9pin D-SUB female connector)	B1	•	•	•	\$1,052
Internal Ethernet interface module, 10/100 Mbit TCP/IP *5	B9	•	•	•	\$692

<b>Power Supply</b>					
24 V Power Supply	L8	•	•	•	\$141
Internal rechargeable battery pack - 10 hours of operation, 8 hours recharging time. includes battery charger and big indicator-housing	L9	•	•	•	\$463

<b>Others</b>					
Internal Calibration Weight (only for Supreme models)	E7	•	•	•	\$332
Disconnectable plug-in between indicator-platform, indicator with female connector (0.2 m) (for option A15)	X1		•	•	\$145
Test report / Certificate	Z3	•	•	•	\$251

<b>Others (DCP* and BBP* models only)</b>					
IP protection IP65 (hose-proof and dust-tight) *2	I65	•	•	•	\$354
Below weighing hanger (only for Supreme IP43 / SIWADCP IP43) hook included. Only available installed from factory.	U1	•	•	•	\$240

\* 2 not available for Signum Advanced high resolution (1.5kg) and Signum Supreme high resolution (620 g)

\* 5 for IP65 only available on request

AD converter (A15) and battery pack (L9) cannot be combined



Description	Order no.	Price in USD
<b>UniCOM interface - models DCP &amp; EDG</b>		
Interface module RS232	YDO01SW-232	\$321
Interface module RS485/422	YDO01SW-485/422	\$321
Interface module analog out (0/4-20 mA, 0-10V)	YDO01SW-AO	\$768
Interface module digital I/O (5 control outputs)	YDO01SW-DIO	\$768
Interface module Ethernet TCP/IP	YDO01SW-ETH	\$768
Interface modules Profibus DP	YDO01SW-DP	\$1,084
Adapter plate for later installation of an UNICOM interface	YAS01SW-CON	\$60

<b>UniCOM interface - models BBP</b>		
Interface module RS232	YDO03SW-232	\$321
Interface module RS485/422	YDO03SW-485/422	\$321
Interface module analog out (0/4-20 mA, 0-10V)	YDO03SW-AO	\$768
Interface module digital I/O (5 control outputs)	YDO03SW-DIO	\$768
Interface module Ethernet TCP/IP	YDO03SW-ETH	\$768
Interface module Profibus DP	YDO03SW-DP	\$1,084

<b>Cables</b>		
Connecting cable from RS232 to USB-Connector, 2 m	YCC01-USBM2	\$272

<b>Electrical accessories</b>		
24 volt module	YAS02MI	\$207

<b>Mechanical accessories</b>		
Column for DCP platforms, height 19"	YDH01PUS	\$320
Column for BBP models	YDH02P	\$638
Column for SIWAEDG model, height 19"	YDH02CWSUS	\$232
Stainless steel indicator holder for bench top fixing, for SIWAEDG	YDH12CWSUS	\$93

<b>Others</b>		
IP65 upgrade kit for cable connectors (D-Sub 25)	YAS01CISL	\$256
Dust Covers (2 units)	YDC01SW	\$81
Barcode Scanner (PS2 Connector)	YBR05PS2	\$868



Description		
Cables	Order no.	Price in USD
Connecting cable to PC, 12-pin round male to 25-pin D-SUB female connector, 5 m	YCC01-03ISM5	\$300
Connecting cable to PC, 12-pin round male to 9-pin D-SUB female connector, 5 m	YCC01-09ISM5	\$300
Connecting cable 12-pin round male connector to open-ended cable, 5 m	YCCDI-03M5	\$295
Connecting cable for Minebea Intec accessories (standard MP8/ MC1 interface), 12-pin round male connector /25-pin D-Submini female connector, 3 m	YCC01-0016M3	\$386
Ethernet connecting cable with RJ45 male connector, 7 m	YCC02-RJ45M7	\$229
Extension cable, 12-pin round male to 12-pin round female connector, 6 m	YCC01-01ISM6	\$321
Electrical accessories		
24 volt module	YAS02MI	\$207
Columns for Model DCS		
Column height 13"	YDH01CWS	\$551
Column height 19"	YDH02CWS	\$623
Column height 29"	YDH03CWS	\$700
Columns for Model BBS		
Column height 29"	YDH02S	\$638
Others		
Dust covers (2 units)	YDC01SW	\$81



IFP4 Flat-bed scales, painted



Order no.	Dimensions (A x B)		Capacity		Readability		Cable length	Platform Height (mm)	Shipping Weight (lb)	Price in USD
	(in.)	(mm)	(lb)	(kg)	(lb)	(kg)				
IFP4-150GG	23.6 x 23.6	600 x 600	330	150	0.01	0.005	6 m	25	198	\$8,091
IFP4-150IG	31.5 x 23.6	800 x 600						25	221	\$8,209
IFP4-150II	31.5 x 31.5	800 x 800						25	243	\$8,288
IFP4-150LG	39.4 x 23.6	1000 x 600						25	243	\$8,288
IFP4-150LI	39.4 x 31.5	1000 x 800						25	265	\$8,400
IFP4-150LL	39.4 x 39.4	1000 x 1000						25	375	\$8,950
IFP4-150NL	49.2 x 39.4	1250 x 1000						25	397	\$9,124
IFP4-150NN	49.2 x 49.2	1250 x 1250						25	481	\$9,467
IFP4-150RN	59.1 x 49.2	1500 x 1250						25	547	\$9,972
IFP4-150RR	59.1 x 59.1	1500 x 1500						35	628	\$10,523
IFP4-150WR	78.7 x 59.1	2000 x 1500						35	739	\$10,870
IFP4-300GG	23.6 x 23.6	600 x 600	660	300	0.02	0.01	6 m	25	198	\$8,091
IFP4-300IG	31.5 x 23.6	800 x 600						25	221	\$8,209
IFP4-300II	31.5 x 31.5	800 x 800						25	243	\$8,288
IFP4-300LG	39.4 x 23.6	1000 x 600						25	243	\$8,288
IFP4-300LI	39.4 x 31.5	1000 x 800						25	265	\$8,400
IFP4-300LL	39.4 x 39.4	1000 x 1000						25	375	\$8,950
IFP4-300NL	49.2 x 39.4	1250 x 1000						25	397	\$9,124
IFP4-300NN	49.2 x 49.2	1250 x 1250						25	481	\$9,467
IFP4-300RN	59.1 x 49.2	1500 x 1250						25	547	\$9,972
IFP4-300RR	59.1 x 59.1	1500 x 1500						35	628	\$10,523
IFP4-300WR	78.7 x 59.1	2000 x 1500						35	739	\$10,870
IFP4-600GG	23.6 x 23.6	600 x 600	1320	600	0.05	0.02	6 m	25	198	\$8,091
IFP4-600IG	31.5 x 23.6	800 x 600						25	221	\$8,209
IFP4-600II	31.5 x 31.5	800 x 800						25	243	\$8,288
IFP4-600LG	39.4 x 23.6	1000 x 600						25	243	\$8,288
IFP4-600LI	39.4 x 31.5	1000 x 800						25	265	\$8,400
IFP4-600LL	39.4 x 39.4	1000 x 1000						25	375	\$8,950
IFP4-600NL	49.2 x 39.4	1250 x 1000						25	397	\$9,124
IFP4-600NN	49.2 x 49.2	1250 x 1250						35	481	\$9,467
IFP4-600RN	59.1 x 49.2	1500 x 1250						35	547	\$9,972
IFP4-600RR	59.1 x 59.1	1500 x 1500						35	628	\$10,523
IFP4-600WR	78.7 x 59.1	2000 x 1500						35	739	\$10,870
YFP01CWSUS	Stainless steel floor fasteners (2 fastening plates, 4 screws) 2.5" foot design									\$115



IFP4 Flat-bed scales, painted, cont.

Order no.	Dimensions (A x B)		Capacity		Readability		Cable length	Platform Height (mm)	Shipping Weight (lb)	Price in USD
	(In.)	(mm)	(lb)	(kg)	(lb)	(kg)				
IFP4-1000GG	23.6 x 23.6	600 x 600	2200	1000	0.1	0.05	6 m	25	198	\$8,091
IFP4-1000IG	31.5 x 23.6	800 x 600						25	221	\$8,209
IFP4-1000II	31.5 x 31.5	800 x 800						25	243	\$8,288
IFP4-1000LG	39.4 x 23.6	1000 x 600						25	243	\$8,288
IFP4-1000LI	39.4 x 31.5	1000 x 800						25	265	\$8,400
IFP4-1000LL	39.4 x 39.4	1000 x 1000						25	375	\$8,950
IFP4-1000NL	49.2 x 39.4	1250 x 1000						25	397	\$9,124
IFP4-1000NN	49.2 x 49.2	1250 x 1250						35	481	\$9,467
IFP4-1000RN	59.1 x 49.2	1500 x 1250						35	547	\$9,972
IFP4-1000RR	59.1 x 59.1	1500 x 1500						45	628	\$10,523
IFP4-1000WR	78.7 x 59.1	2000 x 1500						45	739	\$10,870
IFP4-1500II	31.5 x 31.5	800 x 800	3300	1500	0.1	0.05	6 m	25	243	\$8,288
IFP4-1500LG	39.4 x 23.6	1000 x 600						25	243	\$8,288
IFP4-1500LI	39.4 x 31.5	1000 x 800						35	265	\$8,400
IFP4-1500LL	39.4 x 39.4	1000 x 1000						35	375	\$8,950
IFP4-1500NL	49.2 x 39.4	1250 x 1000						35	397	\$9,124
IFP4-1500NN	49.2 x 49.2	1250 x 1250						35	481	\$9,467
IFP4-1500RN	59.1 x 49.2	1500 x 1250						35	547	\$9,972
IFP4-1500RR	59.1 x 59.1	1500 x 1500						45	628	\$10,523
IFP4-1500WR	78.7 x 59.1	2000 x 1500						45	739	\$10,870
IFP4-3000LL	39.4 x 39.4	1000 x 1000	6600	3000	0.2	0.1	6 m	45	375	\$8,950
IFP4-3000NL	49.2 x 39.4	1250 x 1000						45	397	\$9,124
IFP4-3000NN	49.2 x 49.2	1250 x 1250						45	481	\$9,467
IFP4-3000RN	59.1 x 49.2	1500 x 1250						45	547	\$9,972
IFP4-3000RR	59.1 x 59.1	1500 x 1500						45	628	\$10,523
IFP4-3000WR	78.7 x 59.1	2000 x 1500						45	739	\$10,870
YFP01CWSUS	Stainless steel floor fasteners (2 fastening plates, 4 screws) 2.5" foot design									\$115



Options: IFP4 platforms painted



		Platform dimensions LxW in mm											
		GG	IG	II	LG	LI	LL	NL	NN	RN	RR	WR	
		600 x 600	800 x 600	800 x 800	1000 x 600	1000 x 800	1000 x 1000	1250 x 1000	1250 x 1250	1500 x 1250	1500 x 1500	2000 x 1500	
Option													Price in USD
<b>Others</b>													
Integrated Column	T14				•	•	•	•	•	•	•		\$2,022
Stop bar	T4	•	•	•	•	•	•	•	•	•	•	•	\$611
2nd ramp (drive-through)	T15	•	•	•	•	•	•	•	•	•	•	•	\$2,273
Stainless steel cable shroud													On request
<b>Certificates</b>													
Test report / Certificate	Z3	•	•	•	•	•	•	•	•	•	•	•	\$268

IFS4 Flat-bed scales, stainless steel



1. Part: Selection of the platform										
Order no.	Dimensions (A x B)		Capacity		Readability		Cable length	Platform Height (mm)	Shipping Weight (lb)	Price in USD
	(in.)	(mm)	(lb)	(kg)	(lb)	(kg)				
IFS4-150GG	23.6 x 23.6	600 x 600	330	150	0.01	0.005	6 m	25	198	<b>\$12,948</b>
IFS4-150IG	31.5 x 23.6	800 x 600						25	221	<b>\$13,187</b>
IFS4-150II	31.5 x 31.5	800 x 800						25	243	<b>\$13,421</b>
IFS4-150LG	39.4 x 23.6	1000 x 600						25	243	<b>\$13,885</b>
IFS4-150LI	39.4 x 31.5	1000 x 800						25	265	<b>\$14,371</b>
IFS4-150LL	39.4 x 39.4	1000 x 1000						25	375	<b>\$15,063</b>
IFS4-150NL	49.2 x 39.4	1250 x 1000						25	397	<b>\$15,682</b>
IFS4-150NN	49.2 x 49.2	1250 x 1250						25	481	<b>\$16,370</b>
IFS4-150RN	59.1 x 49.2	1500 x 1250						25	547	<b>\$17,018</b>
IFS4-150RR	59.1 x 59.1	1500 x 1500						35	628	<b>\$17,680</b>
IFS4-150WR	78.7 x 59.1	2000 x 1500						35	739	<b>\$18,343</b>
IFS4-300GG	23.6 x 23.6	600 x 600	660	300	0.02	0.01	6 m	25	198	<b>\$12,948</b>
IFS4-300IG	31.5 x 23.6	800 x 600						25	221	<b>\$13,187</b>
IFS4-300II	31.5 x 31.5	800 x 800						25	243	<b>\$13,421</b>
IFS4-300LG	39.4 x 23.6	1000 x 600						25	243	<b>\$13,885</b>
IFS4-300LI	39.4 x 31.5	1000 x 800						25	265	<b>\$14,371</b>
IFS4-300LL	39.4 x 39.4	1000 x 1000						25	375	<b>\$15,063</b>
IFS4-300NL	49.2 x 39.4	1250 x 1000						25	397	<b>\$15,682</b>
IFS4-300NN	49.2 x 49.2	1250 x 1250						25	481	<b>\$16,370</b>
IFS4-300RN	59.1 x 49.2	1500 x 1250						25	547	<b>\$17,018</b>
IFS4-300RR	59.1 x 59.1	1500 x 1500						35	628	<b>\$17,680</b>
IFS4-300WR	78.7 x 59.1	2000 x 1500						35	739	<b>\$18,343</b>
IFS4-600GG	23.6 x 23.6	600 x 600	1320	600	0.05	0.02	6 m	25	198	<b>\$12,948</b>
IFS4-600IG	31.5 x 23.6	800 x 600						25	221	<b>\$13,187</b>
IFS4-600II	31.5 x 31.5	800 x 800						25	243	<b>\$13,421</b>
IFS4-600LG	39.4 x 23.6	1000 x 600						25	243	<b>\$13,885</b>
IFS4-600LI	39.4 x 31.5	1000 x 800						25	265	<b>\$14,371</b>
IFS4-600LL	39.4 x 39.4	1000 x 1000						25	375	<b>\$15,063</b>
IFS4-600NL	49.2 x 39.4	1250 x 1000						25	397	<b>\$15,682</b>
IFS4-600NN	49.2 x 49.2	1250 x 1250						35	481	<b>\$16,370</b>
IFS4-600RN	59.1 x 49.2	1500 x 1250						35	547	<b>\$17,018</b>
IFS4-600RR	59.1 x 59.1	1500 x 1500						35	628	<b>\$17,680</b>
IFS4-600WR	78.7 x 59.1	2000 x 1500						35	739	<b>\$18,343</b>
YFP01CWSUS	Stainless steel floor fasteners (2 fastening plates, 4 screws) 2.5" foot design									<b>\$115</b>

IFS4 Flat-bed scales, stainless steel, cont.



1. Part: Selection of the platform										
Order no.	Dimensions (A x B)		Capacity		Readability		Cable length	Platform Height (mm)	Shipping Weight (lb)	Price in USD
	(in.)	(mm)	(lb)	(kg)	(lb)	(kg)				
IFS4-1000GG	23.6 x 23.6	600 x 600	2200	1000	0.1	0.05	6 m	25	198	\$12,948
IFS4-1000IG	31.5 x 23.6	800 x 600						25	221	\$13,187
IFS4-1000II	31.5 x 31.5	800 x 800						25	243	\$13,421
IFS4-1000LG	39.4 x 23.6	1000 x 600						25	243	\$13,885
IFS4-1000LI	39.4 x 31.5	1000 x 800						25	265	\$14,371
IFS4-1000LL	39.4 x 39.4	1000 x 1000						25	375	\$15,063
IFS4-1000NL	49.2 x 39.4	1250 x 1000						25	397	\$15,682
IFS4-1000NN	49.2 x 49.2	1250 x 1250						35	481	\$16,370
IFS4-1000RN	59.1 x 49.2	1500 x 1250						35	547	\$17,018
IFS4-1000RR	59.1 x 59.1	1500 x 1500						45	628	\$17,680
IFS4-1000WR	78.7 x 59.1	2000 x 1500						45	739	\$18,343
IFS4-1500II	31.5 x 31.5	800 x 800	3300	1500	0.1	0.05	6 m	25	243	\$13,421
IFS4-1500LG	39.4 x 23.6	1000 x 600						25	243	\$13,885
IFS4-1500LI	39.4 x 31.5	1000 x 800						35	265	\$14,371
IFS4-1500LL	39.4 x 39.4	1000 x 1000						35	375	\$15,063
IFS4-1500NL	49.2 x 39.4	1250 x 1000						35	397	\$15,682
IFS4-1500NN	49.2 x 49.2	1250 x 1250						35	481	\$16,370
IFS4-1500RN	59.1 x 49.2	1500 x 1250						35	547	\$17,018
IFS4-1500RR	59.1 x 59.1	1500 x 1500						45	628	\$17,680
IFS4-1500WR	78.7 x 59.1	2000 x 1500						45	739	\$18,343
IFS4-3000LL	39.4 x 39.4	1000 x 1000	6600	3000	0.2	0.1	6 m	45	375	\$15,063
IFS4-3000NL	49.2 x 39.4	1250 x 1000						45	397	\$15,682
IFS4-3000NN	49.2 x 49.2	1250 x 1250						45	481	\$16,370
IFS4-3000RN	59.1 x 49.2	1500 x 1250						45	547	\$17,018
IFS4-3000RR	59.1 x 59.1	1500 x 1500						45	628	\$17,680
IFS4-3000WR	78.7 x 59.1	2000 x 1500						45	739	\$18,343
YFP01CWSUS	Stainless steel floor fasteners (2 fastening plates, 4 screws) 2.5" foot design									\$115

Options: IFS4 Flat-bed scales, stainless steel



		Dimensions (in.)													
		GG	IG	II	LG	LI	LL	NL	NN	RN	RR	WR			
Option		23.6 x 23.6	31.5 x 23.6	31.5 x 31.5	39.4 x 23.6	39.4 x 31.5	39.4 x 39.4	49.2 x 39.4	49.2 x 49.2	59.1 x 49.2	59.1 x 59.1	78.7 x 59.1	Price in USD		
<b>AISI 304, 2B cold-rolled steel, electropolished, typ.Ra ≤ 0,8μ</b>															
For all weighing capacities:	R6	•	•	•	•	•	•	•	•	•	•	•	\$1,854		
<b>AISI 316 Ti, 2B cold-rolled steel, electropolished, typ.Ra ≤ 0,4μ</b>															
For all weighing capacities:	R2	•											\$2,497		
			•										\$2,497		
				•										\$2,497	
					•									\$2,497	
						•								\$2,497	
							•							\$2,497	
								•						\$2,633	
									•						\$3,064
										•					\$3,374
											•				\$3,609
											•		\$4,013		
<b>Lifting devices</b>															
Retractable Wheels	T7		•*	•*	•	•	•	•	•	•	•		\$2,808		
Lifting mechanism acc. to NIOSH (< 40lbs lifting force, 1 person) *3	T16		•	•	•	•	•	•	•				\$3,829		
										•	•		\$12,182		
Option T16 with T17, includes 2nd ramp for drive through operation *3	T17		•	•	•	•	•	•	•				\$5,942		
Lifting mechanism (for more than 1 person, retrofittable) *3	T10				•	•	•	•	•				\$2,039		
Option T10, incl. 2nd ramp (drive-through) *3	T11				•	•	•	•	•				\$4,072		

\*3 Option cannot be selected for models with 30,000 d resolution

•\* Retractable wheels on IG and II platforms are only available on units up to 600 kg capacity

Options: IFS4 Flat-bed scales, stainless steel



		Dimensions (in.)											
		GG	IG	II	LG	LI	LL	NL	NN	RN	RR	WR	
		23.6 x 23.6	31.5 x 23.6	31.5 x 31.5	39.4 x 23.6	39.4 x 31.5	39.4 x 39.4	49.2 x 39.4	49.2 x 49.2	59.1 x 49.2	59.1 x 59.1	78.7 x 59.1	Price in USD
<b>Others</b>													
IP69K - Kit	L6	•	•	•	•	•	•	•	•	•	•	•	\$888
Note: not for 150 kg models (150 kg = IP68)													
Stop bar	T4	•	•	•	•	•	•	•	•	•	•	•	\$611
Bottom plate	T9	•	•	•	•	•	•	•	•	•	•	•	\$2,998
Towing bar (incl. stop bar)	T5		•	•	•	•	•	•	•	•	•		\$1,136
2 x handles, 2 x rollers	T6	•	•	•	•	•	•						\$1,150
4 handles (2 on front side, 2 on back side)	T13	•	•	•	•	•	•	•	•	•	•	•	\$742
Integrated Column	T14		•*1	•*1	•	•	•	•	•*2	•*2	•*2		\$2,022
2nd ramp (drive-through)	T15	•	•	•	•	•	•	•	•	•	•	•	\$2,273
Stainless steel cable shroud												On request	
<b>Certificates</b>													
Certificate of surface roughness	Z1	•	•	•	•	•	•	•	•	•	•	•	\$268
Certificate material	Z2	•	•	•	•	•	•	•	•	•	•	•	\$268
Test report / Certificate	Z3	•	•	•	•	•	•	•	•	•	•	•	\$268

\*1 for sizes IG + II, T14 in conjunction with T7 requires modification of adding the T14 to the T4 (stop bar).

Call Factory for pricing

\*2 T5 recommended in conjunction with T7

Overview about option combinations IF flat-bed scales

Option	T4	T5	T6	T7	T9	T10	T11	T13	T14	T15	T16	T17
T4	-		X	X	X	X		X	X		X	
T5		-		X	X				X			
T6	X		-		X				X			
T7	X	X		-	X				X*	X		
T9	X	X	X	X	-	X	X	X	X	X	X	X
T10	X				X	-						
T11					X		-					
T13	X				X			-	X			
T14	X	X	X	X*	X			X	-	X		
T15				X	X				X	-		
T16	X				X						-	
T17					X							-

X Combination possible

\* no combination possible for sizes IG + II



# IS Series Platforms



Model Number	Internal Cal	Dimensions	Capacity	Readability	Ship Wgt.	Price USD
ISBBP-06-H	No	Ø 4.5"	0.62 kg	0.001 g	18	\$3,434
ISBBP-3-H	No	7.1" x 7.1"	3.1 kg	0.01 g	19	\$2,998
ISBBP-6-H	No	7.1" x 7.1"	6.2 kg	0.01 g	19	\$3,816
ISBBS-3-H	No	7.1" x 7.1"	3.1 kg	0.01 g	19	\$5,124
ISBBS-6-H	No	7.1" x 7.1"	6.2 kg	0.01 g	19	\$5,737
ISDCP-6-S	No	13.7" x 9.5"	6.2 kg	0.1 g	19	\$3,048
ISDCS-16-H	No	15.8" x 11.8"	16 kg	0.1 g	41	\$4,792
ISDCS-35-H	No	15.8" x 11.8"	34 kg	0.1 g	41	\$5,882
ISEDE-16-HV1	Yes	15.8" x 11.8"	16 kg	0.1 g	41	\$4,683
ISEDE-34-HV1	Yes	15.8" x 11.8"	34 kg	0.1 g	41	\$5,593
ISEDE-64-SV1	Yes	15.8" x 11.8"	64 kg	1 g	41	\$5,719
ISEDE-64-HV1	Yes	15.8" x 11.8"	64 kg	0.1 g	41	\$7,845
ISIGG-150-HV1	Yes	32" x 24"	150 kg	1.0 g	184	\$8,161
ISIGG-300-HV1	Yes	32" x 24"	300 kg	2.0 g	184	\$8,161

## Special Order Allow 2 additional weeks for delivery

-E7		Internal Calibration must be ordered with the unit and is not field installable (Standard on EDE and IGG)				\$321
-U1		Below Scale Weighing must be ordered with the unit and is not field installable				\$236
ISEDE-16-DS1		15.8" x 11.8"	16 kg	0.01 g	41	\$5,749
ISIGG-150-DS1		32" x 24"	150 kg	0.1 g	184	\$8,758
ISIGG-300-DS1		32" x 24"	300 kg	0.2 g	184	\$9,227

\*Please note that the -H1 high resolution upgrade has been changed to -DS1

## Indicators for direct connection with IS platforms

Model no.	Description	Price USD
CAISL1-UV1	Combics 1 (IP44) pre-wired for direct connection to IS platform	\$1,674
CAISL2-UV1	Combics 2 (IP44) pre-wired for direct connection to IS platform	\$1,948
CAISL3-UV1	Combics 3 (IP44) pre-wired for direct connection to IS platform	\$2,354
CAIS1-UV1	Combics 1 (IP69k) pre-wired for direct connection to IS platform	\$1,926
CAIS2-UV1	Combics 2 (IP69k) pre-wired for direct connection to IS platform	\$2,302
CAIS3-UV1	Combics 3 (IP69k) pre-wired for direct connection to IS platform	\$2,745



## Accessories for IS Series

Description		
Interfaces	Order no.	Price in USD
Data interface with 3-m cable (IP67/ RS-485) and round connector; electrically isolated	YDO59IS	\$638
Data interface with 3-m cable (IP67/ RS232/RS423) and round connector; for -FEG or -IGG models	YDO52IS	\$638
Data interface with 3-m cable (IP67/ RS-232) and round connector	YDO58IS	\$638
Data output port, RS-232 D-Sub 9-pin female, (PC connection), length: 6 m	YDO56IS	\$638
Data output port, RS-232 D-Sub 25-pin female connector (PC connection) length: 6 m	YDO57IS	\$638
Data interface (IP65/ RS232) round connector for ISO6BBE, IS2CCE, IS6CCE, IS12CCE	YDO54IS	\$638
Cables		
Extension cable, 12-pin round male connector / 12-pin round female connector, 6 m	YCC01-01ISM6	\$321
Connecting cable, from round connector to PC, 25-pin D- Sub, (YDO52IS/YDO54IS/YDO58IS required), 0.2 m	YCC01-0017D2	\$289
Round male connector for customizing own cables (quick disconnect with 69QC0011) 12-pin	69QC0010	\$185
Round female connector for customizing own cables (quick disconnect with 69QC0010) 12-pin	69QC0011	\$185
Configuration Software		
Configuration software (PC) for backing up and restoring of settings	YAD01IS	\$714
Mechanical accessories		
Pit frame, painted, for IGG platform	YEG04IP	\$1,441
Pit frame, stainless steel, for IGG platform	YEG01IP	\$4,527
Installation hardware for pit frames; required to install YEG01IP and YEG04IP	YAS04IS	\$605
Painted Drive on ramp for -IGG models	YAR10IS	\$1,548





Description						
Cables			Order no.	Price in USD		
Verifiable Strip printer with time, date, and statistical functions			YDP21-US	\$1,066		
Strip or label printer, prints barcodes with direct thermal printer head (ink ribbon cartridges needed), up to 108 mm paper width, can only be used with flexible printout configuration (no "line mode")			ZD420t	\$2,457		
Strip or label printer, prints barcodes with direct thermal printer head, up to 108 mm paper width			ZD420d	\$2,195		
Connecting cable for Minebea Intec accessories (standard MP8/ MC1 interface), 12-pin round male connector /25-pin D-Submini female connector, 3 m			YCC01-0016M3	\$386		
Ethernet connecting cable with RJ45 male connector, 7 m			YCC02-RJ45M7	\$229		
Extension cable, 12-pin round male to 12-pin round female connector, 6 m			YCC01-01ISM6	\$321		
<b>Electrical accessories</b>						
24 volt module			YAS02MI	\$207		
<b>Columns for Model DCS</b>						
Column height 13"			YDH01CWSUS	\$216		
Column height 19"			YDH02CWSUS	\$232		
Column height 29"			YDH03CWSUS	\$268		
<b>Columns for Model BBS</b>						
Column height 29"			YDH02S	\$638		
<b>Others</b>						
Dust covers (2 units)			YDC01SW	\$81		

Please order printer paper at the same time.

Description	Order no.	ZD420d	ZD420t	YDP20	YDP21	Price in USD
<b>Labels</b>						
Labels 58 x 30 mm (quantity of 1000)	69Y03092	√	√			\$44
Labels 58 x 76 mm (quantity of 500)	69Y03093	√	√			\$49
Labels 58 x 100 mm (quantity of 380)	69Y03094	√	√			\$60
Adhesive labels, normal paper, endless roll 20 ml 57 mm	69Y03247			√	√	\$33
<b>Printer paper</b>						
3 paper rolls: 60 mm x 75 m, thermo paper	69Y03090	√				\$55
1 roll of thermo paper, 101mm x 75 m *)	69Y03196	√				\$40
Printer paper 40 m (package of 5 rolls)	6906937			√	√	\$27
<b>Ribbons</b>						
3 ink ribbon cartridges	69Y03234		√			\$316
Ribbon cartridge (spare)	6906918			√		\$23
3 ribbon cartridges (spare)	69Y03952				√	\$63
Plate for attaching indicator and printer to bench stand	YPP01CWS	√	√	√	√	\$144

## Bar code reader YBR0\*



- Optical and acoustic operator feedback
- Processes a wide variety of bar codes- up to 120 mm code width
- Green LED for identification of correct scanning

Description	Price USD
YBR05FC • with 5-pin DIN round male connector (length: 1.8 m), IP67	\$868
YBR05PS2 • with PS/2-connector (length: 1.8 m)	\$868
YBR05USB • with USB-connector (length: 1.8 m) for e.g. Maxxis 5	\$868

### Bar code reader - accessory

Description	Order no.	Price USD
Retainer for bar code scanner, for attachment to bench stand	YBH01CWS	\$242
Combics - Connecting cable with screwed cable gland for bar code reader YBR05FC, open ended cable / 5-pin DIN-female connector, 1 m	YCC02-BR02	\$272

### Bar code reader - connections

Bar code reader	Bar code reader Can be connected to:	Connecting cable required: (or adequate option)	Price USD
YBR05PS2	Combics IP44 (CAISL), Signum painted	-	\$868
YBR05FC	Signum stainless steel	-	\$868
YBR05FC	Combics IP69K (CAIS)	YCC02-BR02	\$868

### Bluetooth-Module



- Bluetooth modules for your wireless data transmission devices
- Easy connecting between two devices
- Energy saving due to low power consumption

Description	Price USD
YDO02C-BTPC Screwable data adapter for indicator and USB 2.0, IP65	\$680
YDO02C-BTPRT Screwable data adapter for indicator and RS232, IP65	\$653
YCC02C-BTPC Pluggable RS232 module for indicator and USB 2.0, IP40	\$632
YCC02C-BTPRT Pluggable RS232 module for indicator and RS232, IP 40	\$601

Bluetooth® Module	Combics	Midrics	Signum	Adapter required
YDO02C-BTPC YDO02C-BTPRT	CAIS1, CAIS2, CAIS3, CAS*E, CAS*G, CAW*S	MIS1, MIS2 MW*P, MW*S		
YCC02C-BTPRT	CAISL1, CAISL2, CAISL3 CAW*P		SIWS- BBP, -DCP SIWA-BBP, -DCP SIWR-DCP	With D-Sub-25 adapter (included)



## Combics 2 Explosion-Proof Indicator

Description	Order no.	Price In USD
Combics 2 EX-Indicator  Stainless steel housing with cable gland Integrated A/D converter Standard 1 x RS232 interface Pre-assembled adapter cable for power supply modules	CAIXS2-U	\$2,406

Preconfiguration with platform series CAPXS, IF, verified by the manufacturer; calibration for place of use; mounting optional data outputs

FM approved indicator for direct connection with IS-X platforms		
Indicator	CAIXS2	\$2,406
485 interface	A19	\$196
Cable to IS-X	M26	\$278
	Total:	\$2,879
<ul style="list-style-type: none"> <li>• Requires display power supply</li> <li>• For US applications - Requires single YPS02-XUR for hazardous area connection or YPS02-ZKR for safe area connection</li> <li>• For Canadian applications - Requires single YPS02-XKR for hazardous area connection or YPS02-ZKR for safe area connection</li> </ul>		



## Accessory Combics Ex-Indicator

Description	Order no.	Price in USD
<b>Interfaces</b>		
Interface RS232/485 (selectable) for digital platform	YDO07-X	\$507
<b>Zener barriers</b>		
Converter RS-232 - RS232 incl. 20m cable with open cable ends (for CAIXS2-U)	YDI05-ZU1	\$1,036
<b>Electrical accessories</b>		
Power supply, 100-240V, for use in hazardous area, USA (FM)	YPS02-XUR	\$2,176
Power supply, 100-240V, for use in hazardous area, Canada (CSA)	YPS02-XKR	\$2,176
Safe area power supply (65 ft. of intrinsically safe cable)	YPS02-ZKR	\$1,472
Intrinsically safe battery pack for Class 1 Div. 2	YRB02-X	\$1,740
Battery charger for YRB02-X rechargeable battery pack (for use only outside the hazardous area)	YRB02-LD	\$402
<b>Cables</b>		
Connecting cable for Ex interface converter YDI05-ZU2 with indicator CAIXS2, open-ended cable for installation to the indicator via cable gland, 14 pin round female connector, IP65, 0.2m	YCC02-XR14F02	\$281
Connecting cable for connecting a company scale/platform with indicator CAIXS2, open-ended cable for installation via cable gland to the indicator, 14-pin round male connector, IP65, 6m	YCC02-XR14M6	\$236
Cable without connectors, 1m (3.28 ft.) 2x0.22 LIYCY, blue sheath, recommended, e.g., for RS-485 interface, 1 m = 1 piece.	YCC485-X	\$16
Connecting cable to PC, 12-pin round male connector / 25-pin D-Submini female connector, 5m	YCC01-03ISM5	\$300
Connecting cable to PC, 12-pin round male connector / 9-pin D-Submini female connector, 5m	YCC01-09ISM5	\$300
Connecting cable to YDI05-ZU3, custom lengths, > 65 ft.,(For CAIXS2) - PRICE PER FOOT	YCC422-X	\$16
<b>Others</b>		
2 Dust Covers	YDC01CI-X	\$90

Explosion protected scales for hazardous areas -  
 Combics Ex-stainless steel platforms  
 FM Approved: Class 1,2,3, Division 1, Groups ABCDEFGT4



Platform Selection								
Order no.	Dimensions (A x B) (in.)	Capacity		Readability		Cable length (ft)	Shipping Weight (lb)	Price in USD
		(lb)	(kg)	(lb)	(kg)			
CAPXS1U-10CC	10 x 10	15	6	0.0005	0.0002	10	16	\$1,137
CAPXS1U-20CC	10 x 10	30	15	0.001	0.0005	10	16	\$1,137
CAPXS1U-50CC	10 x 10	60	30	0.002	0.001	10	16	\$1,137
CAPXS1U-50DD	12 x 12	60	30	0.002	0.001	10	24	\$1,272
CAPXS1U-50EE	18 x 18	60	30	0.002	0.001	10	62	\$1,574
CAPXS1U-100DD	12 x 12	150	60	0.005	0.002	10	24	\$1,272
CAPXS1U-100EE	18 x 18	150	60	0.005	0.002	10	62	\$1,574
CAPXS4U-100GG	24 x 24	150	60	0.005	0.002	10	121	\$5,202
CAPXS4U-100HH	30 x 30	150	60	0.005	0.002	10	187	\$5,536
CAPXS1U-200EE	18 x 18	200	100	0.01	0.005	10	62	\$1,574
CAPXS4U-250GG	24 x 24	300	150	0.01	0.005	10	121	\$5,202
CAPXS4U-250HH	30 x 30	300	150	0.01	0.005	10	187	\$5,536
CAPXS4U-500GG	24 x 24	600	300	0.02	0.01	10	121	\$5,202
CAPXS4U-500HH	30 x 30	600	300	0.02	0.01	10	187	\$5,536
CAPXS4U-1000HH	30 x 30	1500	600	0.05	0.02	10	187	\$5,536
CAPXS4U-1000KK	36 x 36	1500	600	0.05	0.02	20	250	\$6,401
CAPXS4U-1000NN	48 x 48	1500	600	0.05	0.02	20	390	\$7,931
CAPXS4U-2500KK	36 x 36	3000	1500	0.1	0.05	20	250	\$6,175
CAPXS4U-2500NN	48 x 48	3000	1500	0.1	0.05	20	390	\$7,571
CAPXS4U-5000KK	36 x 36	6000	3000	0.2	0.1	20	250	\$6,175
CAPXS4U-5000NN	48 x 48	6000	3000	0.2	0.1	20	390	\$7,571



Options Combics Ex-stainless steel platforms  
 FM Approved: Class I,II,III, Division 1, Groups ABCDEFGT4

\*All options listed require fabrication in Germany with European sizes. The top section indicates the European size platform (in mm) and price. Prices of the options are listed down the right-hand column. Add the two prices together to get the pricing of the platform with the requested option. A list of the corresponding capacities can be found at the bottom of the page. Lead time approximately 8 weeks

Option		DC 320 x 240 \$3,039	ED 400 x 300 \$3,303	FE 500 x 400 \$4,281	GF 650 x 500 \$5,942	IG 800 x 600 \$6,585	II 800 x 800 \$8,032	LI 1000 x 800 \$9,467	LL 1000 x 1000 \$9,800	NL 1250 x 1000 \$10,367	NN 1250 x 1250 \$10,479	RN 1500 x 1250 \$10,835	RR 1500 x 1500 \$11,283	WR 2000 x 1500 \$13,806	Price in USD	
<b>Load plate finishing (only one choice possible)</b>																
Electropolished Stainless Steel, 316 Ti	R2	X													\$461	
			X												\$547	
				X												\$670
					X											\$983
						X										\$1,107
							X									\$2,063
								X	X	X						\$2,261
											X					\$2,727
										X	X			\$2,994		
												X		\$3,584		
<b>Others</b>																
Pressure Lift System	T1						X	X	X						\$1,266	
										X					\$1,337	
											X	X			\$1,417	
													X		\$1,522	
													X	\$1,661		
<b>Certificates</b>																
Test report	Z3	X	X	X	X	X	X	X	X	X	X	X	X	X	\$268	
<b>finishing (Not Plt)</b>																
Platform Frame in stainless steel AISI 316Ti electropolished	S2	X													\$1,044	
			X												\$1,420	
				X											\$1,983	
					X										\$2,245	
						X									\$2,636	
							X	X	X						\$3,584	
										X					\$3,852	
											X	X				\$4,120
											X			\$4,388		
												X		\$4,817		
<b>Platform Capacities in kg:</b>																
CAPXS1: DC-3/6/15 ED- 30/60 FE-30/60/150				CAPXS4: GF-60/150/300 IG-60/150/300/600 II-150/300/600				LI-300/600 LL-150/300/600 NL-600				NN-150/300/600/1500/3000 RN-600/1500/3000 RR-600/1500/3000 WR-600/1500/3000				
<i>Example: CAPXS1-3DC, CAPXS4-150IG</i>																



## Explosion protected scales for hazardous areas - IFXS4 Flat-bed scales, stainless

Platform Selection										
Order no.	Dimensions (A x B)		Capacity		Readability		Cable length	Platform Height (mm)	Shipping Weight (lb)	Price in USD
	(in.)	(mm)	(lb)	(kg)	(lb)	(kg)				
IFXS4-150GG	23.6 x 23.6	600 x 600	330	150	0.01	0.005	6 m	25	198	\$13,463
IFXS4-150IG	31.5 x 23.6	800 x 600						25	221	\$13,702
IFXS4-150II	31.5 x 31.5	800 x 800						25	243	\$13,936
IFXS4-150LG	39.4 x 23.6	1000 x 600						25	243	\$14,400
IFXS4-150LI	39.4 x 31.5	1000 x 800						25	265	\$14,886
IFXS4-150LL	39.4 x 39.4	1000 x 1000						25	375	\$15,578
IFXS4-150NL	49.2 x 39.4	1250 x 1000						25	397	\$16,197
IFXS4-150NN	49.2 x 49.2	1250 x 1250						25	481	\$16,885
IFXS4-150RN	59.1 x 49.2	1500 x 1250						25	547	\$17,534
IFXS4-150RR	59.1 x 59.1	1500 x 1500						35	628	\$18,195
IFXS4-150WR	78.7 x 59.1	2000 x 1500						35	739	\$18,858
IFXS4-300GG	23.6 x 23.6	600 x 600	660	300	0.02	0.01	6 m	25	198	\$13,463
IFXS4-300IG	31.5 x 23.6	800 x 600						25	221	\$13,702
IFXS4-300II	31.5 x 31.5	800 x 800						25	243	\$13,936
IFXS4-300LG	39.4 x 23.6	1000 x 600						25	243	\$14,400
IFXS4-300LI	39.4 x 31.5	1000 x 800						25	265	\$14,886
IFXS4-300LL	39.4 x 39.4	1000 x 1000						25	375	\$15,578
IFXS4-300NL	49.2 x 39.4	1250 x 1000						25	397	\$16,197
IFXS4-300NN	49.2 x 49.2	1250 x 1250						25	481	\$16,885
IFXS4-300RN	59.1 x 49.2	1500 x 1250						25	547	\$17,534
IFXS4-300RR	59.1 x 59.1	1500 x 1500						35	628	\$18,195
IFXS4-300WR	78.7 x 59.1	2000 x 1500						35	739	\$18,858
IFXS4-600GG	23.6 x 23.6	600 x 600	1320	600	0.05	0.02	6 m	25	198	\$13,463
IFXS4-600IG	31.5 x 23.6	800 x 600						25	221	\$13,702
IFXS4-600II	31.5 x 31.5	800 x 800						25	243	\$13,936
IFXS4-600LG	39.4 x 23.6	1000 x 600						25	243	\$14,400
IFXS4-600LI	39.4 x 31.5	1000 x 800						25	265	\$14,886
IFXS4-600LL	39.4 x 39.4	1000 x 1000						25	375	\$15,578
IFXS4-600NL	49.2 x 39.4	1250 x 1000						25	397	\$16,197
IFXS4-600NN	49.2 x 49.2	1250 x 1250						35	481	\$16,885
IFXS4-600RN	59.1 x 49.2	1500 x 1250						35	547	\$17,534
IFXS4-600RR	59.1 x 59.1	1500 x 1500						35	628	\$18,195
IFXS4-600WR	78.7 x 59.1	2000 x 1500						35	739	\$18,858



## IFXS4 Flat-bed scales, Continued

Platform Selection										
Order no.	Dimensions (L x W)		Capacity		Readability		Cable length	Platform Height (mm)	Shipping Weight (lb)	Price in USD
	(in.)	(mm)	(lb)	(kg)	(lb)	(kg)				
IFXS4-1000GG	23.6 x 23.6	600 x 600	2200	1000	0.1	0.05	6 m	25	198	<b>\$13,463</b>
IFXS4-1000IG	31.5 x 23.6	800 x 600						25	221	<b>\$13,702</b>
IFXS4-1000II	31.5 x 31.5	800 x 800						25	243	<b>\$13,936</b>
IFXS4-1000LG	39.4 x 23.6	1000 x 600						25	243	<b>\$14,400</b>
IFXS4-1000LI	39.4 x 31.5	1000 x 800						25	265	<b>\$14,886</b>
IFXS4-1000LL	39.4 x 39.4	1000 x 1000						25	375	<b>\$15,578</b>
IFXS4-1000NL	49.2 x 39.4	1250 x 1000						25	397	<b>\$16,197</b>
IFXS4-1000NN	49.2 x 49.2	1250 x 1250						35	481	<b>\$16,885</b>
IFXS4-1000RN	59.1 x 49.2	1500 x 1250						35	547	<b>\$17,534</b>
IFXS4-1000RR	59.1 x 59.1	1500 x 1500						45	628	<b>\$18,195</b>
IFXS4-1000WR	78.7 x 59.1	2000 x 1500						45	739	<b>\$18,858</b>
IFXS4-1500II	31.5 x 31.5	800 x 800	3300	1500	0.1	0.05	6 m	25	243	<b>\$13,936</b>
IFXS4-1500LG	39.4 x 23.6	1000 x 600						25	243	<b>\$14,400</b>
IFXS4-1500LI	39.4 x 31.5	1000 x 800						35	265	<b>\$14,886</b>
IFXS4-1500LL	39.4 x 39.4	1000 x 1000						35	375	<b>\$15,578</b>
IFXS4-1500NL	49.2 x 39.4	1250 x 1000						35	397	<b>\$16,197</b>
IFXS4-1500NN	49.2 x 49.2	1250 x 1250						35	481	<b>\$16,885</b>
IFXS4-1500RN	59.1 x 49.2	1500 x 1250						35	547	<b>\$17,534</b>
IFXS4-1500RR	59.1 x 59.1	1500 x 1500						45	628	<b>\$18,195</b>
IFXS4-1500WR	78.7 x 59.1	2000 x 1500						45	739	<b>\$18,858</b>
IFXS4-3000LL	39.4 x 39.4	1000 x 1000	6600	3000	0.2	0.1	6 m	45	375	<b>\$15,578</b>
IFXS4-3000NL	49.2 x 39.4	1250 x 1000						45	397	<b>\$16,197</b>
IFXS4-3000NN	49.2 x 49.2	1250 x 1250						45	481	<b>\$16,885</b>
IFXS4-3000RN	59.1 x 49.2	1500 x 1250						45	547	<b>\$17,534</b>
IFXS4-3000RR	59.1 x 59.1	1500 x 1500						45	628	<b>\$18,195</b>
IFXS4-3000WR	78.7 x 59.1	2000 x 1500						45	739	<b>\$18,858</b>





IFXS4 Options

Dimensions (in.)

Option	GG	IG	II	LG	LI	LL	NL	NN	RN	RR	WR	Price in USD
	23.6 x 23.6	31.5 x 23.6	31.5 x 31.5	39.4 x 23.6	39.4 x 31.5	39.4 x 39.4	49.2 x 39.4	49.2 x 49.2	59.1 x 49.2	59.1 x 59.1	78.7 x 59.1	
<b>AISI 304, 2B cold-rolled steel, electropolished, typ.Ra ≤ 0,8µ</b>												
For all weighing capacities:	R6	•	•	•	•	•	•	•	•	•	•	\$1,854
<b>AISI 316 Ti, 2B cold-rolled steel, electropolished, typ.Ra ≤ 0,4µ</b>												
For all weighing capacities:	R2	•										\$2,497
			•									\$2,497
				•								\$2,497
					•							\$2,497
						•						\$2,497
							•					\$2,497
								•				\$2,633
									•			\$3,064
										•		\$3,374
											•	\$3,609
											•	\$4,012
<b>Lifting devices</b>												
Retractable Wheels	T7		•*	•*	•	•	•	•	•	•	•	\$2,808
Lifting mechanism acc. to NIOSH( < 40lbs lifting force, 1 person) *3	T16		•	•	•	•	•	•	•			\$3,828
Option T16 with T17 includes 2nd ramp for drive through operation *3	T17		•	•	•	•	•	•				\$5,942
Lifting mechanism (for more than 1 person, retrofitable) *3	T10				•	•	•	•				\$2,039
Option T10, incl. 2nd ramp (drive-through) *3	T11				•	•	•	•				\$4,072

\*3 Option cannot be selected for models with 30,000 d resolution

•\*

Retractable wheels on IG and II platforms are only available on units up to 600 kg capacity

Options: IFXS4 Flat-bed scales, stainless steel

Option	GG	IG	II	LG	LI	LL	NL	NN	RN	RR	WR	Price in USD
	23.6 x 23.6	31.5 x 23.6	31.5 x 31.5	39.4 x 23.6	39.4 x 31.5	39.4 x 39.4	49.2 x 39.4	49.2 x 49.2	59.1 x 49.2	59.1 x 59.1	78.7 x 59.1	
<b>Others</b>												
IP69K - Kit	L6	•	•	•	•	•	•	•	•	•	•	\$888
Note: not for 150 kg models (150 kg = IP68)												
Stop bar	T4	•	•	•	•	•	•	•	•	•	•	\$611
Bottom plate	T9	•	•	•	•	•	•	•	•	•	•	\$2,998
Towing bar (incl. stop bar)	T5		•	•	•	•	•	•	•	•		\$1,136
2 x handles, 2 x rollers	T6	•	•	•	•	•						\$1,150
4 handles (2 on front side, 2 on	T13	•	•	•	•	•	•	•	•	•	•	\$742
Integrated Column	T14		•*1	•*1	•	•	•	•*2	•*2	•*2		\$2,022
2nd ramp (drive-through)	T15	•	•	•	•	•	•	•	•	•	•	\$2,273
Stainless steel cable shroud												On request

IFXS4 Options,  
Continued



Option	GG	IG	II	LG	LI	LL	NL	NN	RN	RR	WR	Price in USD
	23.6 x 23.6	31.5 x 23.6	31.5 x 31.5	39.4 x 23.6	39.4 x 31.5	39.4 x 39.4	49.2 x 39.4	49.2 x 49.2	59.1 x 49.2	59.1 x 59.1	78.7 x 59.1	

Certificates													
Certificate of surface roughness	Z1	•	•	•	•	•	•	•	•	•	•	•	\$268
Certificate material	Z2	•	•	•	•	•	•	•	•	•	•	•	\$268
Test report / Certificate	Z3	•	•	•	•	•	•	•	•	•	•	•	\$268

\*1 for sizes IG + II, T14 in conjunction with T7 requires the modification of adding the T14 to the T4 (stop bar).

Contact factory for pricing

\*2 T5 recommended in conjunction with T7

Overview about option combinations IF flat-bed scales

Option	T4	T5	T6	T7	T9	T10	T11	T13	T14	T15	T16	T17
<b>T4</b>	-		<b>X</b>	<b>X</b>	<b>X</b>	<b>X</b>		<b>X</b>	<b>X</b>		<b>X</b>	
<b>T5</b>		-		<b>X</b>	<b>X</b>				<b>X</b>			
<b>T6</b>	<b>X</b>		-		<b>X</b>				<b>X</b>			
<b>T7</b>	<b>X</b>	<b>X</b>		-	<b>X</b>				<b>X*</b>	<b>X</b>		
<b>T9</b>	<b>X</b>	<b>X</b>	<b>X</b>	<b>X</b>	-	<b>X</b>	<b>X</b>	<b>X</b>	<b>X</b>	<b>X</b>	<b>X</b>	<b>X</b>
<b>T10</b>	<b>X</b>				<b>X</b>	-						
<b>T11</b>					<b>X</b>		-					
<b>T13</b>	<b>X</b>				<b>X</b>			-	<b>X</b>			
<b>T14</b>	<b>X</b>	<b>X</b>	<b>X</b>	<b>X*</b>	<b>X</b>			<b>X</b>	-	<b>X</b>		
<b>T15</b>				<b>X</b>	<b>X</b>				<b>X</b>	-		
<b>T16</b>	<b>X</b>				<b>X</b>						-	
<b>T17</b>					<b>X</b>							-

X Combination possible

\* no combination possible for sizes IG + II



Signum Ex Supreme

Order no.	Capacity		Readability		Weighing Platform	Material	Price in USD
	kg	lb	g	lb	in.		
SIWXSBBP-3-06-H	0.62	1.3	0.001	0.000002	Ø5	Painted*	\$6,880
SIWXSBBP-3-3-H	3.1	6.8	0.01	0.00002	7.1" x 7.1"	Painted*	\$5,071
SIWXSBBP-3-6-H	6.1	13.5	0.01	0.00002	7.1" x 7.1"	Painted*	\$6,159
SIWXSDBP-3-35-H	35	75	0.1	0.0002	13.7" X 9.7"	Painted*	\$6,461
SIWXSBBB-3-3-H	3.1	6.8	0.01	0.00002	7.1" x 7.1"	Stainless Steel	\$7,070
SIWXSBBB-3-6-H	6.1	13.5	0.01	0.00002	7.1" x 7.1"	Stainless Steel	\$8,150
SIWXSDBS-3-35-H	35	75	0.1	0.0002	13.7" X 9.7"	Stainless Steel	\$8,036

\* Stainless Steel Weighing Pan

- Monolithic weighing system
- Overload protection 300 kg
- For US applications - Requires single YPS02-XUR for hazardous area connection or YPS02-ZKR for safe area connection
- For Canadian applications - Requires single YPS02-XKR for hazardous area connection or YPS02-ZKR for safe area connection
- Class, Division and Group approvals are listed in the datasheet

IS Explosion Proof Scales

Order no.	Capacity		Readability		Weighing Platform	Design	Price in USD
	kg	lb	g	lb	in.		
ISXBBS-3-H	3.1	6.8	0.01	0.00002	7.1" x 7.1"	Stainless Steel	\$5,947
ISXBBS-6-H	6.1	13.5	0.01	0.00002	7.1" x 7.1"	Stainless Steel	\$6,890
-E7X	Internal Calibration must be ordered with the unit and is not field installable (Standard on EDE and IGG)						\$450

\* Stainless Steel Weighing Pan

- For US applications - Requires single YPS02-XUR for hazardous area connection or YPS02-ZKR for safe area connection
- For Canadian applications - Requires single YPS02-XKR for hazardous area connection or YPS02-ZKR for safe area connection
- RS485 Standard

FM approved indicator for direct connection with IS-X platforms		
Indicator	CAIXS2	\$2,406
485 interface	A19	\$196
Cable to IS-X	M26	\$278
Total:		\$2,879
<ul style="list-style-type: none"> <li>• Requires display power supply</li> <li>- YPS02-XUR for hazardous area or YPS02-ZKR for safe area connection</li> </ul>		



## Accessories Signum EX Painted

Description	Order no.	List Price USD
<b>Columns for model DCP</b>		
<b>Aluminum for attaching indicator to platform</b>		
Column height 19.6"	YDH01PUS	\$320
<b>Columns for model BBP</b>		
<b>Aluminum for attaching indicator to platform</b>		
Column height 15.75"	YDH02P	\$638

## Accessories Signum EX Stainless Steel

<b>Columns for model DCS</b>		
<b>Stainless Steel for attaching indicator to platform</b>		
Column height 13"	YDH01CWS	\$551
Column height 19.6"	YDH02CWS	\$623
Column height 25.5"	YDH03CWS	\$700
<b>Columns for model BBS</b>		
<b>Stainless Steel for attaching indicator to platform</b>		
Column height 15.75"	YDH02S	\$638

## Accessories Signum EX All

Description	Order no.	List Price USD
<b>Power Supplies</b>		
Power supply, 100-240V, for use in hazardous area, USA (FM)	YPS02-XUR	\$2,176
Power supply, 100-240V, for use in hazardous area, Canada (CSA)	YPS02-XKR	\$2,176
Power supply, 100-240V, for use outside hazardous area (FM)	YPS02-ZKR	\$1,472
External rechargeable battery for installation in FM	YRB02-X	\$1,740
Battery charger- for use in the safe area only	YRB02-LD	\$402

## Mechanical accessories

Bracket for wall mounting, stainless steel, tiltable indicator	YDH02CISUS	\$93
--	------------	------

## Accessories IS-X

Description	Order no.	List Price USD
<b>Interfaces</b>		
Data output RS-232 for IS-EDE-X	YDO58IS-X	\$638
Data output RS-232 for IS-IGG-X	YDO52IS-X	\$638

## Zener Barriers and Cables

Hazardous area converter RS232 - RS232, 14 pin plug with 20m cable	YDI05-ZU2	\$1,036
Hazardous area converter RS422 - RS232	YDI05-ZU3	\$886
RS-422 Connecting cable to YDI05-ZU3, Custom Length - Price per foot	YCC422-X	\$16
RS-485 Connecting cable to YDI05-ZU3, Custom Length - Price per foot	YCC485-X	\$16



## Inteco® - Compression Type Load Cell (incl. Bottom Disc)



- Nominal capacity range from 500 kg to 75 t
- Resistant against vibrations
- Wide temperature range
- Stainless steel housing & measuring element
- Ex-version available
- IP68, IP69
- Advanced operating temperature and painting on request



Load Cells OIML R60, Accuracy Class D1 = 0.04%

Type	Description	Signal	Height	Cable	Order Number	Price USD
Inteco/500kgD1	Compression Load Cell 500 kg	2mV/V	138.5	5m	9405 203 01150	\$1,301
Inteco/1tD1	Compression Load Cell 1 t	2mV/V	138.5	5m	9405 203 01210	\$1,301
Inteco/2tD1	Compression Load Cell 2 t	2mV/V	138.5	5m	9405 203 01220	\$1,301
Inteco/3tD1	Compression Load Cell 3 t	2mV/V	138.5	5m	9405 203 01230	\$1,301
Inteco/5tD1	Compression Load Cell 5 t	2mV/V	138.5	5m	9405 203 01250	\$1,374
Inteco/10tD1	Compression Load Cell 10 t	2mV/V	138.5	5m	9405 203 01310	\$1,572
Inteco/20tD1	Compression Load Cell 20 t	2mV/V	138.5	12m	9405 203 01320	\$1,663
Inteco/30tD1	Compression Load Cell 30 t	2mV/V	138.5	12m	9405 203 01330	\$1,779
Inteco/50tD1	Compression Load Cell 50 t	2mV/V	138.5	12m	9405 203 01350	\$2,059
Inteco/60tD1	Compression Load Cell 60 t	2mV/V	138.5	12m	9405 203 01360	\$2,153
Inteco/75tD1	Compression Load Cell 75 t	2mV/V	138.5	12m	9405 203 01375	\$2,252

Precision Load Cells OIML R60, Accuracy Class C3 = 0.015%

Type	Description	Signal	Height	Cable	Order Number	Price USD
Inteco/2tC3	Compression Load Cell 2 t	2mV/V	138.5	5m	9405 203 03220	\$1,852
Inteco/3tC3	Compression Load Cell 3 t	2mV/V	138.5	5m	9405 203 03230	\$1,852
Inteco/5tC3	Compression Load Cell 5 t	2mV/V	138.5	5m	9405 203 03250	\$1,956
Inteco/10tC3	Compression Load Cell 10 t	2mV/V	138.5	5m	9405 203 03310	\$2,039
Inteco/20tC3	Compression Load Cell 20 t	2mV/V	138.5	12m	9405 203 03320	\$2,143
Inteco/30tC3	Compression Load Cell 30 t	2mV/V	138.5	12m	9405 203 03330	\$2,246
Inteco/50tC3	Compression Load Cell 50 t	2mV/V	138.5	12m	9405 203 03350	\$2,475
Inteco/60tC3	Compression Load Cell 60 t	2mV/V	138.5	12m	9405 203 03360	\$2,569
Inteco/75tC3	Compression Load Cell 75 t	2mV/V	138.5	12m	9405 203 03375	\$2,668

Precision Load Cells OIML R60, Accuracy Class C6 = 0.008%

Type	Description	Signal	Height	Cable	Order Number	Price USD
Inteco/3tC6	Compression Load Cell 3 t	2mV/V	138.5	5m	9405 203 06230	\$2,404
Inteco/5tC6	Compression Load Cell 5 t	2mV/V	138.5	5m	9405 203 06250	\$2,507
Inteco/10tC6	Compression Load Cell 10 t	2mV/V	138.5	5m	9405 203 06310	\$2,591
Inteco/20tC6	Compression Load Cell 20 t	2mV/V	138.5	12m	9405 203 06320	\$2,694
Inteco/30tC6	Compression Load Cell 30 t	2mV/V	138.5	12m	9405 203 06330	\$2,797
Inteco/50tC6	Compression Load Cell 50 t	2mV/V	138.5	12m	9405 203 06350	\$3,027
Inteco/60tC6	Compression Load Cell 60 t	2mV/V	138.5	12m	9405 203 06360	\$3,120
Inteco/75tC6	Compression Load Cell 75 t	2mV/V	138.5	12m	9405 203 06375	\$3,219

Compression load cell Inteco®, Converter Connexx®

Type	Description	Order Number	Price USD
Converter	The converter Connexx can only be ordered with the above-mentioned load	9405 103 00000	\$296

Mounting kits and accessories for Inteco® see PR 6201

Type	Description	Order Number	Price USD
PR 6154/03	Application set for 3 load cells. Including: 2x PR 6155/05, 1x PR 6152/25, 1x PR	9405 361 54031	\$363
PR 6154/04	Application set for 4 load cells. Including: 3x PR 6155/05, 1x PR 6152/25, 1x PR	9405 361 54041	\$427

Inteco®, Converter Connexx® - Accessories

Type	Description	Order Number	Price USD
PR6152/10	Connection cable between Connexx and X3 (10 m)	9405 361 52101	\$114
PR6152/25	Connection cable between Connexx and X3 (25 m)	9405 361 52251	\$206
PR6152/40	Connection cable between Connexx and X3 (40 m)	9405 361 52401	\$287
PR6153/98	Split cable gland	9405 361 53981	\$27
PR6153/99	Terminal resistor for Connexx, M12	9405 361 53991	\$27
PR6155/05	Connection cable between Connexx and Connexx (5 m)	9405 361 55051	\$70
PR6155/10	Connection cable between Connexx and Connexx (10 m)	9405 361 55101	\$81



## PR 6201 - Precision Compression Load Cell (incl. Bottom Disc)

Load Cells, Accuracy Class L = 0.25%

Type	Order Number	Nominal Load		Height		Cable Length			Shipping Weight lb	List Price USD
		kg	lb	mm	inches	m	ft	Signal		
PR6201/52L	9405 262 01529	500	1,102	138.5	5.45	5	16	1mV/V	6.2	\$1,507
PR6201/13L	9405 262 01139	1,000	2,205	138.5	5.45	5	16	1mV/V	6.2	\$1,507
PR6201/23L	9405 262 01239	2,000	4,409	138.5	5.45	5	16	1mV/V	6.2	\$1,507
PR6201/33L	9405 262 01339	3,000	6,614	138.5	5.45	5	16	1mV/V	7.5	\$1,507
PR6201/53L	9405 262 01539	5,000	11,023	138.5	5.45	5	16	1mV/V	7.5	\$1,507
PR6201/14L	9405 262 01149	10,000	22,046	138.5	5.45	5	16	1mV/V	7.5	\$1,507

High Capacity Load Cells, Accuracy Class N = 0.06%

Type	Order Number	kg	lb	mm	inches	m	ft	Signal	Weight lb	USD
PR6201/15N	9405 262 01151	100,000	220,459	200	7.87	12	39	1mV/V	28.4	\$3,617
PR6201/25N	9405 262 01251	200,000	440,917	270	10.63	12	39	1mV/V	63.9	\$6,571
PR6201/35N	9405 262 01351	300,000	661,376	270	10.63	12	39	1mV/V	63.9	\$6,794

6201/...LA Series includes 4-20 Analog Output

Type	Order Number	Nominal Load		Height		Cable Length			Shipping Weight lb	List Price USD
		kg	lb	mm	inches	m	ft	Signal		
PR6201/52LA	9405 562 01529	500	1,102	138.5	5.45	5	16	4-20mA	6.2	\$1,984
PR6201/13LA	9405 562 01139	1,000	2,205	138.5	5.45	5	16	4-20mA	6.2	\$1,984
PR6201/23LA	9405 562 01239	2,000	4,409	138.5	5.45	5	16	4-20mA	6.2	\$1,984
PR6201/33LA	9405 562 01339	3,000	6,614	138.5	5.45	5	16	4-20mA	6.2	\$1,984
PR6201/53LA	9405 562 01539	5,000	11,023	138.5	5.45	5	16	4-20mA	6.2	\$1,984
PR6201/14LA	9405 562 01149	10,000	22,046	138.5	5.45	5	16	4-20mA	6.2	\$1,984
PR6201/24LA	9405 562 01249	20,000	44,092	138.5	5.45	12	39	4-20mA	11.2	\$2,065
PR6201/34LA	9405 562 01549	30,000	66,138	138.5	5.45	12	39	4-20mA	11.2	\$2,168
PR6201/54LA	9405 562 01159	50,000	110,229	138.5	5.45	12	39	4-20mA	11.2	\$2,423
PR6201/15LA	9405 562 01559	100,000	220,459	200	7.87	12	39	4-20mA	28.4	\$3,706
PR6201/25LA	9405 562 01559	200,000	440,917	270.0	10.63	12	39	4-20mA	63.9	\$7,240

Dual Bridge Compression Load Cell, Accuracy Class N = 0.06%

Type	Order Number	Nominal Load		Height		Cable Length			Shipping Weight lb	List Price USD
		kg	lb	mm	inches	m	ft	Signal		
PR6201/15NDB	9405 262 01155	100,000	220,459	200	7.87	12	39	1mV/V	28.4	\$5,122
PR6201/25NDB	9405 262 01255	200,000	440,917	270	10.63	12	39	1mV/V	63.9	\$7,459
PR6201/35NDB	9405 262 01355	300,000	661,376	270	10.63	12	39	1.5mV/V	63.9	\$9,467
PR6201/520ILDB	9405 262 01555	500,000	440,917	270	10.63	12	39	1mV/V	63.9	\$10,574

PR6001 Mounting Kits  
500kg to 10,000kg (1,100lb to 22,000lb)



Type	Order Number	Description	H-Force (kN)		Height		Material	Shipping Weight lb	List Price USD
			Contin.	Destruct.	mm	In.			
PR6001/00N	9405 360 01001	Universal Vessel Foot	N/A	>20	190.5	7.5	Steel zinc	22.9	\$406
PR6001/00S	9405 360 01002	Universal Vessel Foot	N/A	>20	190.5	7.5	Stainless Stl	24.7	\$774
PR6001/10N	9405 360 01101	Flexlock	25	>45	190.5	7.5	Steel zinc	36.4	\$887
PR6001/10S	9405 360 01102	Flexlock	25	>39	190.5	7.5	Stainless Stl	38.1	\$1,423
PR6001/20N	9405 360 01201	Flexlock	50	>100	190.5	7.5	Steel Zinc	56.4	\$1,223
PR6001/20S	9405 360 01202	Flexlock	50	>100	190.5	7.5	Stainless Stl	58.2	\$2,370
PR6001/30N	9405 360 01301	Flexlock	200	>236	250.5	9.9	Steel Zinc	315.3	\$3,080

20,000kg to 50,000kg (44,000lb to 110,000lb)

PR6001/01N	9405 360 01011	Universal Vessel Foot	N/A	>20	190.5	7.5	Steel Zinc	22.9	\$406
PR6001/01S	9405 360 01012	Universal Vessel Foot	N/A	>20	190.5	7.5	Stainless Stl	24.7	\$774
PR6001/11N	9405 360 01111	Flexlock	25	>45	190.5	7.5	Steel Zinc	36.4	\$887
PR6001/11S	9405 360 01112	Flexlock	25	>39	190.5	7.5	Stainless Stl	38.1	\$1,423
PR6001/21N	9405 360 01211	Flexlock	50	>100	190.5	7.5	Steel Zinc	56.4	\$1,223
PR6001/21S	9405 360 01212	Flexlock	50	>100	190.5	7.5	Stainless Stl	58.2	\$2,370
PR6001/26N	9405 360 01261	Flexlock	50	>100	250.5	9.9	Steel Zinc	167.6	\$2,491
PR6001/31N	9405 360 01311	Flexlock	200	>236	250.5	9.9	Steel Zinc	315.3	\$3,080

Welding plates for 500kg to 50,000kg (1,100lb to 110,000lb)

PR6001/90N	9405 360 01901	Welding Plate Kit for PR6001/00N			30	1.18	Steel, Zinc	21.6	\$136
PR6001/90S	9405 360 01902	Welding Plate Kit for PR6001/00S			30	1.18	Stainless Stl	21.6	\$332
PR6001/91N	9405 360 01911	Welding Plate Kit for PR6001/10N			30	1.18	Steel, Zinc	30.6	\$288
PR6001/91S	9405 360 01912	Welding Plate Kit for PR6001/10S			30	1.18	Stainless Stl	30.6	\$464
PR6001/92N	9405 360 01921	Welding Plate Kit for PR6001/20N			30	1.18	Steel, Zinc	49.8	\$427
PR6001/92S	9405 360 01922	Welding Plate Kit for PR6001/20S			30	1.18	Stainless Stl	49.8	\$748

100,000kg (220,000lb)

PR6001/02N	9405 360 01021	Universal Vessel Foot	N/A	>28	290	11.4	Steel Zinc	60.6	\$730
PR6001/32N	9405 360 01321	Flexlock	200	>236	350	13.8	Steel Zinc	436.5	\$3,760
PR6001/96N	9405 360 01961	Welding Plate Kit for /02N	N/A	N/A	2 x 30	1.18	Steel Zinc	49.8	\$427

200,000kg to 300,000kg (440,000lb to 660,000lb)

PR6001/03N	9405 360 01031	Universal Vessel Foot	N/A	>28	385	15.2	Steel Zinc	132.3	\$1,050
PR6001/33N	9405 360 01331	Flexlock	200	>236	445	17.5	Steel Zinc	606.3	\$4,115
PR6001/98N	9405 360 01981	Welding Plate Kit for /03N	N/A	N/A	2 x 30	2 x 1.18	Steel Zinc	108.0	\$568

Seismic Mounts

Type	Order Number	Description	H-Force (kN)		Height		Material	Shipping Weight lb	List Price USD
			Contin.	Destruct.	mm	In.			
PR6144/54N	9405 361 44541	Mount for PR6201/24	370	>600	217	8.5	Steel Zinc	269.0	\$4,899
PR6144/15N	9405 361 44151	Mount for PR6201/15	440	>800	298	11.7	Steel Zinc	440.9	\$5,104
PR6144/35N	9405 361 44351	Mount for PR6201/25	520	>1200	387	15.2	Steel Zinc	723.1	\$6,125
PR6144/55N	9405 361 44551	Mount for PR6201/520t	520	>1200	428	16.9	Steel Zinc	802.5	\$6,682

## Digital Converter Connexx®



- Extension of many load cells to a digital solution
- Standard interface CANopen
- No cable junction box needed
- Generation of individual weight values, e.g. for more efficient service
- Can only be ordered with below-listed load cells
- When ordering, both order numbers need to be provided



Type	Description	Order no.	Price in USD
PR 6203/Digital Kit	Converter Connexx for Inteco	9405 103 00000	<b>\$296</b>
PR 6211/Digital Kit	Converter Connexx for PR 6211	9405 111 00000	<b>\$296</b>
PR 6212/Digital Kit	Converter Connexx for PR 6212	9405 112 00000	<b>\$296</b>
PR 6221/Digital Kit	Converter Connexx for PR 6221	9405 121 00000	<b>\$296</b>
PR 6241/Digital Kit	Converter Connexx for PR 6241	9405 141 00000	<b>\$296</b>
PR 6261/Digital Kit	Converter Connexx for Novego	9405 161 00000	<b>\$296</b>

Type	Description	Order no.	Price in USD
PR 6154/03	Application set for 3 load cells. Including: 2x PR 6155/05, 1x PR 6152/25, 1x PR 6153/99	9405 361 54031	<b>\$363</b>
PR 6154/04	Application set for 4 load cells. Including: 3x PR 6155/05, 1x PR 6152/25, 1x PR 6153/99	9405 361 54041	<b>\$427</b>

Type	Description	Order no.	Price in USD
PR 6152/10	Connection cable between Connexx and X3 (10 m)	9405 361 52101	<b>\$114</b>
PR 6152/25	Connection cable between Connexx and X3 (25 m)	9405 361 52251	<b>\$206</b>
PR 6152/40	Connection cable between Connexx and X3 (40 m)	9405 361 52401	<b>\$287</b>
PR 6153/98	Split cable gland	9405 361 53981	<b>\$27</b>
PR 6153/99	Terminal resistor for Connexx, M12	9405 361 53991	<b>\$27</b>
PR 6155/05	Connection cable between Connexx and Connexx (5 m)	9405 361 55051	<b>\$70</b>
PR 6155/10	Connection cable between Connexx and Connexx (10 m)	9405 361 55101	<b>\$81</b>

- Digital version guarantees fast signaling times for reliable dosing processes
- Thanks to the use of field bus communication, the cable junction box is no longer needed
- The standard interface CANopen ensures straightforward installation and calibration
- CANopen allows for extra-long communication paths of up to 200m
  - Weight values can also be generated individually - per load cell - meaning that defective load cells can be easily identified





## PR 6211 - Compact Compression Type Load Cell

Capacity: 30kg to 300kg (60lb to 660lb)

Compact Compression-Type Load Cells OIML R60 Class D1 = 0.05% / 0.04% (500 kg - 10 t)

Type	Order Number	Nominal Load		Height		Cable m	Length ft	Signal	Shipping Weight lb	List Price USD
		kg	lb	mm	inches					
PR6211/31D1	9405 262 11311	30	66	25	0.98	3	10	2mV/V	0.7	\$1,211
PR6211/51D1	9405 262 11511	50	110	25	0.98	3	10	2mV/V	0.7	\$1,211
PR6211/12D1	9405 262 11121	100	220	25	0.98	3	10	2mV/V	0.7	\$1,211
PR6211/22D1	9405 262 11221	200	441	25	0.98	3	10	2mV/V	0.7	\$1,211
PR6211/32D1	9405 262 11321	300	661	25	0.98	3	10	2mV/V	0.7	\$1,211

## PR6012 - Mounting Kits

-Includes integrated Lift-off, jack-up, and dummy functions

Capacity: 30kg to 300kg (60lb to 660lb)

Type	Order Number	Description	H-Force (kN)		Height		Material	Shipping Weight lb	List Price USD
			Contin.	Destruct.	mm	in.			
PR6012/00S	9405 360 12002	Mounting Plate Kit	N/A	N/A	42.2	1.66	Stainless Stl	3.8	\$264
PR6012/20S	9405 360 12202	Flexlock	450	1,000	42.2	1.66	Stainless Stl	3.8	\$379

Mounting kit Adapter - for use with PR6012 and PR6011 mounting kits

Type	Order Number	Description	Material	Shipping Weight lb	List Price USD
PR6011/09S	9405 360 11092	Adapter kit- mount 30kg to 300kg cells in PR6012 for 31/41 mounting kits	Stainless Stl	2.0	\$207

## PR 6212 - Compact Compression Type Load Cell



• USA (FM): IS CL I, II, III, DIV 1 GP ABCDEGFT4

Compact Compression-Type Load Cells OIML R60 Class C1 = 0.04%

Capacity: 500kg to 10,000kg (1,100lb to 22,000lb)

Type	Order Number	Nominal Load		Height		Cable Length		Signal	Shipping Weight lb	List Price USD
		kg	lb	mm	inches	m	ft			
PR6212/500kgC1	9405 212 01150	500	1,102	46.4	1.81	5	16	2mV/V	2.9	\$1,239
PR6212/1tC1	9405 212 01210	1,000	2,205	46.4	1.81	5	16	2mV/V	2.9	\$1,239
PR6212/2tC1	9405 212 01220	2,000	4,409	46.4	1.81	5	16	2mV/V	2.9	\$1,239
PR6212/3tC1	9405 212 01230	3,000	6,614	46.4	1.81	5	16	2mV/V	2.9	\$1,239
PR6212/5tC1	9405 212 01250	5,000	11,023	46.4	1.81	5	16	2mV/V	2.9	\$1,239
PR6212/10tC1	9405 212 01310	10,000	22,046	46.4	1.81	5	16	2mV/V	2.9	\$1,239

### Epoxy Coated Version

Type	Order Number	Nominal Load		Height		Cable Length		Signal	Shipping Weight lb	List Price USD
		kg	lb	mm	inches	m	ft			
PR6212/500kgC1-L	9405 812 01150	500	1,102	46.4	1.81	5	16	2mV/V	2.9	\$1,618
PR6212/1tC1-L	9405 812 01210	1,000	2,205	46.4	1.81	5	16	2mV/V	2.9	\$1,618
PR6212/2tC1-L	9405 812 01220	2,000	4,409	46.4	1.81	5	16	2mV/V	2.9	\$1,618
PR6212/3tC1-L	9405 812 01230	3,000	6,614	46.4	1.81	5	16	2mV/V	2.9	\$1,618
PR6212/5tC1-L	9405 812 01250	5,000	11,023	46.4	1.81	5	16	2mV/V	2.9	\$1,618
PR6212/10tC1-L	9405 812 01310	10,000	22,046	46.4	1.81	5	16	2mV/V	2.9	\$1,618

### High Temperature Version of Compact Compression-Type Load Class L = 0.25%

Usable Temperature Range: -40°F to 356°F (-40°C to 180°C)

Type	Order Number	Nominal Load		Height		Cable Length		Signal	Shipping Weight lb	List Price USD
		kg	lb	mm	inches	m	ft			
PR6212/500kg LT	9405 412 01150	500	1,102	46.4	1.81	5	16	2mV/V	2.9	\$2,700
PR6212/1t LT	9405 412 01210	1,000	2,205	46.4	1.81	5	16	2mV/V	2.9	\$2,700
PR6212/2t LT	9405 412 01220	2,000	4,409	46.4	1.81	5	16	2mV/V	2.9	\$2,700
PR6212/3t LT	9405 412 01230	3,000	6,614	46.4	1.81	5	16	2mV/V	2.9	\$2,700
PR6212/5t LT	9405 412 01250	5,000	11,023	46.4	1.81	5	16	2mV/V	2.9	\$2,700



## PR6012 - Mounting Kits

Capacity: 500kg to 10,000kg (1,100lb to 22,000lb)

Mounting Kits with lift-off, jack-up, and dummy functions, without Constrainer

Type	Order Number	Description	H-Force (kN)		Height		Material	Shipping Weight lb	List Price USD
			Contin.	Destruct.	mm	in.			
PR6012/02N	9405 360 12021	Mounting Plate Kit	N/A	N/A	80.0	3.15	Steel Zinc	14.9	\$216
PR6012/02S	9405 360 12022	Mounting Plate Kit	N/A	N/A	80.0	3.15	Stainless Stl	14.9	\$428

## FLEXLOCKS with additional functions and Integrated Constrainer

-Includes integrated Lift-off, jack-up, and dummy functions

Type	Order Number	Description	H-Force (kN)		Height		Material	Shipping Weight lb	List Price USD
			Contin.	Destruct.	mm	in.			
PR6012/32N	9405 360 12321	FlexLock	5	>10	80.0	3.15	Steel Zinc	19.4	\$579
PR6012/32S	9405 360 12322	FlexLock	5	>10	80.0	3.15	Stainless Stl	19.4	\$1,025
PR6012/42N	9405 360 12421	FlexLock	20	>50	80.0	3.15	Steel Zinc	20.3	\$660
PR6012/42S	9405 360 12422	FlexLock	20	>50	80.0	3.15	Stainless Stl	20.3	\$1,401

Capacity: 500kg to 10,000kg (1,100lb to 22,000lb)

Mounting Kits without Constrainer

Type	Order Number	Description	H-Force (kN)		Height		Material	Shipping Weight lb	List Price USD
			Contin.	Destruct.	mm	in.			
PR6012/01N	9405 360 12011	Mounting Plate Kit	N/A	N/A	80.0	3.15	Steel Zinc	8.8	\$189
PR6012/01S	9405 360 12012	Mounting Plate Kit	N/A	N/A	80.0	3.15	Stainless Stl	8.8	\$352

## FLEXLOCKS with Integrated Constrainer

Type	Order Number	Description	H-Force (kN)		Height		Material	Shipping Weight lb	List Price USD
			Contin.	Destruct.	mm	in.			
PR6012/31N	9405 360 12311	FlexLock	5	>10	80.0	3.15	Steel Zinc	15.5	\$525
PR6012/31S	9405 360 12312	FlexLock	5	>10	80.0	3.15	Stainless Stl	15.5	\$914
PR6012/41N	9405 360 12411	FlexLock	20	>50	80.0	3.15	Steel Zinc	16.4	\$644
PR6012/41S	9405 360 12412	FlexLock	20	>50	80.0	3.15	Stainless Stl	16.4	\$1,152

## Special Mounting Kits

Type	Order Number	Description	Height		Material	Shipping Weight lb	List Price USD
			mm	in.			
PR6012/53S	9405 360 12532	Additional Lift-off protector for PR 6012/02S,N + PR 6012/32S,N			Stainless Steel		\$226
PR6012/54S	9405 360 12542	Additional Lift-off protector for PR 6012/42S,N			Stainless Steel		\$238
PR6012/63 N,S	9405 360 12632	Pivot for PR 6212/ 500kg – 10 t	80.0	3.15	Stainless Steel	18.9	\$1,154





## PR 6202 - Hygienic Precision Compression Load Cell

Capacity: 1,000kg to 10,000kg (2,205lb to 22,000lb)

Hygienic Compression-Type Load Cells OIML R60 Class C1 = 0.03%

Type	Order Number	Nominal Load		Height		Cable Length			Shipping Weight lb	List Price USD
		kg	lb	mm	inches	m	ft	Signal		
PR6202/1tC1	9405 202 02210	1,000	2,205	118.5	4.67	5	16	2mV/V	4.6	<b>\$1,833</b>
PR6202/2tC1	9405 202 02220	2,000	4,409	118.5	4.67	5	16	2mV/V	4.6	<b>\$1,833</b>
PR6202/4tC1	9405 202 02240	4,000	8,819	118.5	4.67	5	16	2mV/V	4.6	<b>\$1,939</b>
PR6202/6tC1	9405 202 02260	6,000	13,227	118.5	4.67	5	16	2mV/V	4.6	<b>\$1,939</b>
PR6202/10tC1	9405 202 02310	10,000	22,046	118.5	4.67	5	16	2mV/V	5.5	<b>\$1,939</b>

Hygienic Compression-Type Load Cells OIML R60 Class C3 = 0.015%

Type	Order Number	Nominal Load		Height		Cable Length			Shipping Weight lb	List Price USD
		kg	lb	mm	inches	m	ft	Signal		
PR6202/2tC3	9405 202 03220	2,000	4,409	118.5	4.67	5	16	2mV/V	4.6	<b>\$2,725</b>
PR6202/4tC3	9405 202 03240	4,000	8,819	118.5	4.67	5	16	2mV/V	4.6	<b>\$2,836</b>
PR6202/6tC3	9405 202 03260	6,000	13,227	118.5	4.67	5	16	2mV/V	4.6	<b>\$2,836</b>
PR6202/10tC3	9405 202 03310	10,000	22,046	118.5	4.67	5	16	2mV/V	5.5	<b>\$2,981</b>

Hygienic Compression-Type Load Cells OIML R60 Class C4 = 0.012%

Type	Order Number	Nominal Load		Height		Cable Length			Shipping Weight lb	List Price USD
		kg	lb	mm	inches	m	ft	Signal		
PR6202/4tC4	9405 202 04240	4,000	8,819	118.5	4.67	5	16	2mV/V	4.6	<b>\$3,171</b>
PR6202/6tC4	9405 202 04260	6,000	13,227	118.5	4.67	5	16	2mV/V	4.6	<b>\$3,171</b>
PR6202/10tC4	9405 202 04310	10,000	22,046	118.5	4.67	5	16	2mV/V	5.5	<b>\$3,338</b>

## PR6002 Mounting Kits

Capacity: 1,000kg to 10,000kg (2,205lb to 22,000lb)

Type	Order Number	Description	H-Force (kN)		Height		Material	Shipping Weight lb	List Price USD
			Contin.	Destruct.	mm	in.			
PR6002/10S	9405 360 02102	Flexlock	25	>50	190.5	7.5	Stainless	49.0	<b>\$1,867</b>
PR6002/02S	9405 360 02022	Mounting Plate Kit	N/A	>35	190.5	7.5	Stainless	9.9	<b>\$697</b>
PR6002/04S	9405 360 02042	Mtg Plate Kit w/ lift off	N/A	N/A	190.5	7.5	Stainless	29.8	<b>\$1,019</b>
PR6002/00S	9405 360 02002	Top & Bottom load discs	N/A	N/A	160.5	6.3	Stainless	2.6	<b>\$306</b>

## PR 6202 - Hygienic Precision Compression High Capacity Load Cell



Capacity: 25,000kg to 50,000kg (55,000lb to 110,000lb)

Hygienic Compression-Type Load Cells OIML R60 Class C1 = 0.03%

Type	Order Number	Nominal Load		Height		Cable Length			Shipping Weight lb	List Price USD
		kg	lb	mm	inches	m	ft	Signal		
PR6202/25tC1	9405 202 02325	25,000	55,115	118.5	4.67	12	39	2mV/V	8.2	\$2,045
PR6202/50tC1	9405 202 02350	50,000	110,229	118.5	4.67	12	39	2mV/V	9.0	\$2,613

Hygienic Compression-Type Load Cells OIML R60 Class C3 = 0.015%

Type	Order Number	Nominal Load		Height		Cable Length			Shipping Weight lb	List Price USD
		kg	lb	mm	inches	m	ft	Signal		
PR6202/25tC3	9405 202 03325	25,000	55,115	118.5	4.67	12	39	2mV/V	8.2	\$3,115
PR6202/50tC3	9405 202 03350	50,000	110,229	118.5	4.67	12	39	2mV/V	9.0	\$3,617

Hygienic Compression-Type Load Cells OIML R60 Class C4 = 0.012%

Type	Order Number	Nominal Load		Height		Cable Length			Shipping Weight lb	List Price USD
		kg	lb	mm	inches	m	ft	Signal		
PR6202/25tC4	9405 202 04325	25,000	55,115	118.5	4.67	12	39	2mV/V	8.2	\$3,450
PR6202/50tC4	9405 202 04350	50,000	110,229	118.5	4.67	12	39	2mV/V	9.0	\$3,784

## PR6002 Mounting Kits

Capacity: 25,000kg to 50,000kg (55,000lb to 110,000lb)

Type	Order Number	Description	H-Force (kN)		Height		Material	Shipping Weight lb	List Price USD
			Contin.	Destruct.	mm	in.			
PR6002/11S	9405 360 02112	Flexlock	25	>50	190.5	7.5	Stainless	49.4	\$1,867
PR6002/03S	9405 360 02032	Mounting Plate Kit	N/A	>35	190.5	7.5	Stainless	10.5	\$697
PR6002/05S	9405 360 02052	Mtg Plate Kit w/ lift off	N/A	N/A	190.5	7.5	Stainless	30.2	\$1,019
PR6002/01S	9405 360 02012	Top & Bottom load discs	N/A	N/A	160.5	6.3	Stainless	3.3	\$306



Contego Hygienic Mount incl. PR 6241 Load Cell Class D1 = 0.04%

Type	Order Number	Nominal Load		Height		Cable	Length	Signal	Shipping	List Price
		kg	lb	mm	Inches					
Contego 100kg D1 A	9405 241 61110	100	220	118	4.65	5	16	2mV/V	27	\$2,893
Contego 100kg D1 B	9405 241 71110									
Contego 200kg D1 A	9405 241 61120	200	441	118	4.65	5	16	2mV/V	27	\$2,893
Contego 200kg D1 B	9405 241 71120									
Contego 300kg D1 A	9405 241 61130	300	661	118	4.65	5	16	2mV/V	27	\$2,893
Contego 300kg D1 B	9405 241 71130									
Contego 500kg D1 A	9405 241 61150	500	1,102	118	4.65	5	16	2mV/V	27	\$2,893
Contego 500kg D1 B	9405 241 71150									
Contego 1000kg D1 A	9405 241 61210	1,000	2,205	118	4.65	5	16	2mV/V	27	\$2,893
Contego 1000kg D1 B	9405 241 71210									
Contego 2000kg D1 A	9405 241 61220	2,000	4,409	118	4.65	5	16	2mV/V	27	\$2,893
Contego 2000kg D1 B	9405 241 71220									

Contego Hygienic Mount incl. PR 6241 Load Cell Class C3 = 0.015%

Type	Order Number	Nominal Load		Height		Cable	Length	Signal	Shipping	List Price
		kg	lb	mm	Inches					
Contego 200kg C3 A	9405 241 63120	200	441	118	4.65	5	16	2mV/V	27	\$3,561
Contego 300kg C3 A	9405 241 63130	300	661	118	4.65	5	16	2mV/V	27	\$3,561
Contego 500kg C3 A	9405 241 63150	500	1,102	118	4.65	5	16	2mV/V	27	\$3,561
Contego 1000kg C3 A	9405 241 63210	1,000	2,205	118	4.65	5	16	2mV/V	27	\$3,561
Contego 2000kg C3 A	9405 241 63220	2,000	4,409	118	4.65	5	16	2mV/V	27	\$3,561

Contego® - Accessories

Mounting Plate

Type	Order Number	Description	Height		Material	Shipping	List Price
			mm	In.			
PR6041/80S	9405 360 41802	Mounting Plate for Contego	40	1.57	Stainless Steel		\$401





## PR 6241 - Compression S-Type Load Cell



Compression S-Type Load Cells OIML R60 Class D1 = 0.04%

Capacity: 100kg to 2,000kg (220lb to 4,400lb)

Type	Order Number	Nominal Load		Height		Cable Length		Signal	Shipping Weight lb	List Price USD
		kg	lb	mm	inches	m	ft			
PR6241/12D1	9405 262 41121	100	220	60	2.36	5	16	2mV/V	2.6	\$1,667
PR6241/22D1	9405 262 41221	200	441	60	2.36	5	16	2mV/V	2.6	\$1,667
PR6241/32D1	9405 262 41321	300	661	60	2.36	5	16	2mV/V	2.6	\$1,667
PR6241/52D1	9405 262 41521	500	1,102	60	2.36	5	16	2mV/V	2.6	\$1,840
PR6241/13D1	9405 262 41131	1,000	2,205	60	2.36	5	16	2mV/V	4.2	\$1,840
PR6241/23D1	9405 262 41231	2,000	4,409	60	2.36	5	16	2mV/V	4.6	\$1,840

Precision Compression S-Type Load Cells OIML R60 Class C3 = 0.015%

Type	Order Number	Nominal Load		Height		Cable Length		Signal	Shipping Weight lb	List Price USD
		kg	lb	mm	inches	m	ft			
PR6241/22C3	9405 262 41227	200	441	60	2.36	5	16	2mV/V	2.6	\$2,198
PR6241/32C3	9405 262 41327	300	661	60	2.36	5	16	2mV/V	2.6	\$2,198
PR6241/52C3	9405 262 41527	500	1,102	60	2.36	5	16	2mV/V	2.6	\$2,198
PR6241/13C3	9405 262 41137	1,000	2,205	60	2.36	5	16	2mV/V	4.2	\$2,429
PR6241/23C3	9405 262 41237	2,000	4,409	60	2.36	5	16	2mV/V	4.6	\$2,429

Precision Compression S-Type Load Cells OIML R60 Class C6 = 0.008%

Type	Order Number	Nominal Load		Height		Cable Length		Signal	Shipping Weight lb	List Price USD
		kg	lb	mm	inches	m	ft			
PR6241/22C6	9405 262 41228	200	441	60	2.36	5	16	2mV/V	2.6	\$2,670
PR6241/32C6	9405 262 41328	300	661	60	2.36	5	16	2mV/V	2.6	\$2,670
PR6241/52C6	9405 262 41528	500	1,102	60	2.36	5	16	2mV/V	2.6	\$2,670
PR6241/13C6	9405 262 41138	1,000	2,205	60	2.36	5	16	2mV/V	4.2	\$2,836
PR6241/23C6	9405 262 41238	2,000	4,409	60	2.36	5	16	2mV/V	4.6	\$2,836

## Mounting Kits without Constrainer

Capacity: 100kg to 2,000kg (220lb to 4,400lb)

Type	Order Number	Description	H-Force (kN)		Height		Material	Shipping Weight lb	List Price USD
			Contin.	Destruct.	mm	in.			
PR6041/04N	9405 360 41041	Rubber Mounting Kit	N/A	N/A	55	2.2	Rubber	0.8	\$117
PR6041/30N	9405 360 41301	Mounting Plate	N/A	N/A	92	3.6	Steel Zinc	6.2	\$234
PR6041/30S	9405 360 41302	Mounting Plate	N/A	N/A	92	3.6	Stainless	6.2	\$379
PR6041/51S	9405 360 41512	Load Cell Foot	N/A	N/A	44	1.7	Stainless	1.7	\$474

## FlexLocks with Integrated Constrainer

Capacity: 100kg to 2,000kg (220lb to 4,400lb)

Type	Order Number	Description	H-Force (kN)		Height		Material	Shipping Weight lb	List Price USD
			Contin.	Destruct.	mm	in.			
PR6043/30N	9405 360 43301	Flexlock	6	>20	92	3.6	Steel Zinc	10.6	\$607
PR6043/30S	9405 360 43302	Flexlock	6	>20	92	3.6	Stainless	10.6	\$964

## Load Disc

Type	Order Number	Description	Material	Shipping Weight lb	List Price USD
PR6043/31S	9405 360 43312	Accessory - Load disc for PR6241, 100kg - 2t	Stainless Stl	0.5	\$76

## PR 6241 - Compression S-Type Load Cell

Compression S-Type Load Cells OIML R60 Class D1 = 0.04%

Capacity: 3,000kg to 5,000kg (6,600lb to 11,000lb)



Type	Order Number	Nominal Load		Height		Cable	Length	Signal	Shipping Weight lb	List Price USD
		kg	lb	mm	inches	m	ft			
PR6241/33D1	9405 262 41331	3,000	6,614	90	3.54	5	16	2mV/V	4.6	\$1,990
PR6241/53D1	9405 262 41531	5,000	11,023	90	3.54	5	16	2mV/V	4.9	\$1,990

## Precision Compression S-Type Load Cells OIML R60 Class C3 = 0.015%

Type	Order Number	Nominal Load		Height		Cable	Length	Signal	Shipping Weight lb	List Price USD
		kg	lb	mm	inches	m	ft			
PR6241/33C3	9405 262 41337	3,000	6,614	90	3.54	5	16	2mV/V	4.6	\$2,429
PR6241/53C3	9405 262 41537	5,000	11,023	90	3.54	5	16	2mV/V	4.9	\$2,429

## Precision Compression S-Type Load Cells OIML R60 Class C6 = 0.008%

Type	Order Number	Nominal Load		Height		Cable	Length	Signal	Shipping Weight lb	List Price USD
		kg	lb	mm	inches	m	ft			
PR6241/33C6	9405 262 41338	3,000	6,614	90	3.54	5	16	2mV/V	4.6	\$2,836

## Mounting Kits without Constrainer

Capacity: 3,000kg to 5,000kg (6,600lb to 11,000lb)

Type	Order Number	Description	H-Force (kN)		Height		Material	Shipping Weight lb	List Price USD
			Contin.	Destruct.	mm	in.			
PR6041/40N	9405 360 41401	Mounting Plate	N/A	N/A	130	5.1	Steel, zinc-	15.2	\$298
PR6041/40S	9405 360 41402	Mounting Plate	N/A	N/A	130	5.1	Stainless	15.2	\$503

## FlexLocks with Integrated Constrainer

Capacity: 3,000kg to 5,000kg (6,600lb to 11,000lb)

Type	Order Number	Description	H-Force (kN)		Height		Material	Shipping Weight lb	List Price USD
			Contin.	Destruct.	mm	in.			
PR6043/40N	9405 360 43401	Flexlock	8	>50	130	5.1	Steel, zinc-	23.4	\$764
PR6043/40S	9405 360 43402	Flexlock	8	>50	130	5.1	Stainless	23.4	\$1,332

## PR6044 - Mounting Kits

-Includes integrated Lift-off, jack-up, and dummy functions

Capacity: 100kg to 5,000kg (220lb to 4,400lb)

Type	Order Number	Description	H-Force (kN)		Height		Material	Shipping Weight lb	List Price USD
			Contin.	Destruct.	mm	in.			
PR6044/00S	9405 360 44002	Mounting Plate Kit	N/A	N/A	92	3.6	Stainless	7.1	\$427
PR6044/10S	9405 360 44102	Flexlock	6	20	92	3.6	Stainless	12.3	\$1,001

Capacity: 3,000kg to 5,000kg (6,600lb to 11,000lb)

PR6044/01S	9405 360 44012	Mounting Plate Kit	N/A	N/A	130	5.1	Stainless	16.5	\$920
PR6044/11S	9405 360 44112	Flexlock	18	50	14	5.1	Stainless	25.1	\$1,510



## PR 6246 - Tension S-Type Load Cell

Tension S-Type Load Cells OIML R60 Class D1 = 0.04%

Capacity: 100kg to 500kg (220lb to 1,100lb)

Type	Order Number	Nominal Load		Height		Cable m	Length ft	Signal	Shipping Weight lb	List Price USD
		kg	lb	mm	inches					
PR6246/12D1	9405 262 46121	100	220	60	2.36	5	16	2mV/V	2.6	\$1,667
PR6246/22D1	9405 262 46221	200	441	60	2.36	5	16	2mV/V	2.6	\$1,667
PR6246/32D1	9405 262 46321	300	661	60	2.36	5	16	2mV/V	2.6	\$1,667
PR6246/52D1	9405 262 46521	500	1,102	60	2.36	5	16	2mV/V	2.6	\$1,667

## Precision Tension S-Type Load Cells OIML R60 Class C3 = 0.015%

Capacity: 100kg to 500kg (220lb to 1,100lb)

Type	Order Number	Nominal Load		Height		Cable m	Length ft	Signal	Shipping Weight lb	List Price USD
		kg	lb	mm	inches					
PR6246/22C3	9405 262 46227	200	441	60	2.36	5	16	2mV/V	2.6	\$2,198
PR6246/32C3	9405 262 46327	300	661	60	2.36	5	16	2mV/V	2.6	\$2,198
PR6246/52C3	9405 262 46527	500	1,102	60	2.36	5	16	2mV/V	2.6	\$2,198

## Precision Tension S-Type Load Cells OIML R60 Class C6 = 0.008%

Capacity: 100kg to 500kg (220lb to 1,100lb)

Type	Order Number	Nominal Load		Height		Cable m	Length ft	Signal	Shipping Weight lb	List Price USD
		kg	lb	mm	inches					
PR6246/22C6	9405 262 46228	200	441	60	2.36	5	16	2mV/V	2.6	\$2,670
PR6246/32C6	9405 262 46328	300	661	60	2.36	5	16	2mV/V	2.6	\$2,670
PR6246/52C6	9405 262 46528	500	1,102	60	2.36	5	16	2mV/V	2.6	\$2,670

## Swivel Bearing Kits

Capacity: 100kg to 500kg (220lb to 1,100lb)

Type	Order Number	Description	Material	Shipping Weight lb	List Price USD
PR6046/00N	9405 360 46001	Swivel Bearing Kit	Steel, zinc-plated	0.9	\$150
PR6046/00S	9405 360 46002	Swivel Bearing Kit	Stainless Steel	0.8	\$295



## PR 6246 - Tension S-Type Load Cell

Tension S-Type Load Cells OIML R60 Class D1 = 0.04%

Capacity: 1,000kg to 3,000kg (2,200lb to 6,600lb)

Type	Order Number	Nominal Load		Height		Cable m	Length ft	Signal	Shipping Weight lb	List Price USD
		kg	lb	mm	Inches					
PR6246/13D1	9405 262 46131	1,000	2,205	60	2.36	5	16	2mV/V	4.2	\$1,840
PR6246/23D1	9405 262 46231	2,000	4,409	60	2.36	5	16	2mV/V	4.6	\$1,840
PR6246/33D1	9405 262 46331	3,000	6,614	90	3.54	5	16	2mV/V	4.6	\$1,840

## Precision Tension S-Type Load Cells OIML R60 Class C3 = 0.015%

Capacity: 1,000kg to 3,000kg (2,200lb to 6,600lb)

Type	Order Number	Nominal Load		Height		Cable m	Length ft	Signal	Shipping Weight lb	List Price USD
		kg	lb	mm	Inches					
PR6246/13C3	9405 262 46137	1,000	2,205	60	2.36	5	16	2mV/V	4.2	\$2,429
PR6246/23C3	9405 262 46237	2,000	4,409	60	2.36	5	16	2mV/V	4.6	\$2,429
PR6246/33C3	9405 262 46337	3,000	6,614	90	3.54	5	16	2mV/V	4.6	\$2,429

## Precision Tension S-Type Load Cells OIML R60 Class C6 = 0.008%

Capacity: 1,000kg to 3,000kg (2,200lb to 6,600lb)

Type	Order Number	Nominal Load		Height		Cable m	Length ft	Signal	Shipping Weight lb	List Price USD
		kg	lb	mm	Inches					
PR6246/13C6	9405 262 46138	1,000	2,205	60	2.36	5	16	2mV/V	4.2	\$2,836
PR6246/23C6	9405 262 46238	2,000	4,409	60	2.36	5	16	2mV/V	4.6	\$2,836
PR6246/33C6	9405 262 46338	3,000	6,614	90	3.54	5	16	2mV/V	4.6	\$2,836

## Swivel Bearing Kits

Capacity: 1,000kg to 3,000kg (2,200lb to 6,600lb)

Type	Order Number	Description	Material	Shipping Weight lb	List Price USD
PR6046/11N	9405 360 46111	Swivel Bearing Kit	Steel Zinc	3.0	\$340
PR6046/11S	9405 360 46112	Swivel Bearing Kit	Stainless	2.6	\$858

PR 6251 - PanCake Level Sensor



PanCake Sensor, Accuracy Class L = 0.5 Capacity: 500kg to 5,000kg (1,100lb to 11,000lb)

Type	Order Number	Nominal Load		Height		Cable m	Length ft	Signal	Shipping Weight lb	List Price USD
		kg	lb	mm	inches					
PR6251/52L	9405 262 51529	500	1,102	25	1	5	16	2mV/V	2.6	\$1,037
PR6251/13L	9405 262 51139	1,000	2,205	25	1	5	16	2mV/V	2.6	\$1,037
PR6251/23L	9405 262 51239	2,000	4,409	25	1	5	16	2mV/V	2.6	\$1,037
PR6251/33L	9405 262 51339	3,000	6,614	25	1	5	16	2mV/V	2.6	\$1,037
PR6251/53L	9405 262 51539	5,000	11,023	25	1	5	16	2mV/V	2.6	\$1,037

PanCake Sensor, Accuracy Class L = 0.5%, with Analog Amplifier (4-20mA)

Capacity: 500kg to 5,000kg (1,100lb to 11,000lb)

Type	Order Number	Nominal Load		Height		Cable m	Length ft	Signal	Shipping Weight lb	List Price USD
		kg	lb	mm	inches					
PR6251/52LA	9405 562 51529	500	1,102	25	1	5	16	4-20mA	2.6	\$1,444
PR6251/13LA	9405 562 51139	1,000	2,205	25	1	5	16	4-20mA	2.6	\$1,444
PR6251/23LA	9405 562 51239	2,000	4,409	25	1	5	16	4-20mA	2.6	\$1,444
PR6251/33LA	9405 562 51339	3,000	6,614	25	1	5	16	4-20mA	2.6	\$1,444
PR6251/53LA	9405 562 51539	5,000	11,023	25	1	5	16	4-20mA	2.6	\$1,444

PR 6251 - Screw-in Foot Accessories

Capacity: 500kg to 5,000kg (1,100lb to 11,000lb)

Type	Order Number	Description	Height		Material	Shipping Weight lb	List Price USD
			mm	in.			
PR6051/20S	9405 360 51202	Screw-in adaptor for PanCake level cell up to 2t	155	6.1	Stainless	3.7	\$329
PR6051/21S	9405 360 51212	Screw-in adaptor for PanCake level cell up to 5t	155	6.1	Stainless	3.7	\$329

Mounting Plates

Capacity: 500kg to 5,000kg (1,100lb to 11,000lb)

Type	Order Number	Description	Height		Material	Shipping Weight lb	List Price USD
			mm	in.			
PR6051/12S	9405 960 51122	Mounting Plate for 1,000lb to 35,000lb capacity	15	0.6	Stainless	3.3	\$329

PR 6251 - PanCake Level Sensor, Accuracy Class L = 0.5%

Capacity: 10,000kg to 20,000kg (22,000lb to 35,000lb)

Type	Order Number	Nominal Load		Height		Cable m	Length ft	Signal	Shipping Weight lb	List Price USD
		kg	lb	mm	inches					
PR6251/14L	9405 262 51149	10,000	22,046	35	1.4	5	16	2mV/V	3.0	\$1,332
PR6251/24L	9405 262 51249	16,000	35,273	35	1.4	5	16	2mV/V	3.0	\$1,332

PanCake Sensor, Accuracy Class L = 0.5%, with Analog Amplifier (4-20mA)

Capacity: 10,000kg to 20,000kg (22,000lb to 35,000lb)

Type	Order Number	Nominal Load		Height		Cable m	Length ft	Signal	Shipping Weight lb	List Price USD
		kg	lb	mm	inches					
PR6251/14LA	9405 562 51149	10,000	22,046	35	1.4	5	16	4-20mA	3.0	\$1,755
PR6251/24LA	9405 562 51249	16,000	35,273	35	1.4	5	16	4-20mA	3.0	\$1,755

PR 6251 - Accessories

Capacity: 10,000kg to 20,000kg (22,000lb to 35,000lb)

Type	Order Number	Description	Height		Material	Shipping Weight lb	List Price USD
			mm	in.			
PR6051/22S	9405 360 51222	Screw-in adaptor for PanCake level cell up to 10t	155	6.1	Stainless	3.7	\$329

Mounting Plate

Capacity: 10,000kg to 20,000kg (22,000lb to 35,000lb)

Type	Order Number	Description	Height		Material	Shipping Weight lb	List Price USD
			mm	in.			
PR6051/12S	9405 360 51122	Mounting Plate for 1,000lb to 35,000lb capacity	15	0.6	Stainless	3.3	\$329





Load Cells OIML R60, Accuracy Class C3 = 0.015%

Type	Order Number	Description	Signal	Height (mm)	Price in USD
Novego 125 kg C3	9405 261 03112	Hygienic weighing module 125 kg (250 lb)	2mV/V	42.0	\$1,163
Novego 250 kg C3	9405 261 03125	Hygienic Weighing Module 250 kg (550 lb)	2mV/V	42.0	\$1,163
Novego 500 kg C3	9405 261 03150	Hygienic Weighing Module 500 kg (1,100 lb)	2mV/V	42.0	\$1,163
Novego 1 t C3	9405 261 03210	Hygienic Weighing Module 1t (2,200 lb)	2mV/V	42.0	\$1,163
Novego 2 t C3	9405 261 03220	Hygienic Weighing Module 2t (4,400 lb)	2mV/V	42.0	\$1,288

Accessories

Type	Order Number	Description	Height (mm)	Price in USD
Novego /00S	9405 360 61002	Adapter plate with threaded bolts	19 mm	\$168
Novego /01S	9405 360 61012	Adapter plate with built-in height adjuster	251 mm to 331 mm	\$595
Novego /02S	9405 360 61022	Pendulum base for rack mounting	50 mm	\$444
Novego /03S	9405 360 61032	Pendulum base for floor mounting	50 mm	\$444
Novego /04S	9405 360 61042	Pendulum base for floor mounting with built-in height adjuster	50 mm	\$568
Novego /05S	9405 360 61052	Shim set (3 x 1 mm, 1 x 2 mm, 3 x 5 mm)		\$97

\* PR6061/06S transport lock now included as standard equipment





## PR 40 - Single Point Aluminum Load Cells

Accuracy Class C3 = 0.02% MR



Type	Order Number	Nominal Load		Cable m	Length ft	Signal	List Price USD
		kg	lb				
PR 40/5 kg C3MR	9409 240 07005	5	10	0.5	1.5	2mV/V	\$132
PR 40/7,5 kg C3MR	9409 240 07007	7.5	15	0.5	1.5	2mV/V	\$132
PR 40/10 kg C3MR	9409 240 07010	10	20	0.5	1.5	2mV/V	\$132
PR 40/15 kg C3MR	9409 240 07015	15	30	0.5	1.5	2mV/V	\$132
PR 40/20 kg C3MR	9409 240 07020	20	40	0.5	1.5	2mV/V	\$132
PR 40/30 kg C3MR	9409 240 07030	30	60	0.5	1.5	2mV/V	\$132
PR 40/40 kg C3MR	9409 240 07040	40	80	0.5	1.5	2mV/V	\$132
PR 40/50 kg C3MR	9409 240 07050	50	100	0.5	1.5	2mV/V	\$132

## PR 43 - Single Point Aluminum Load Cells

Accuracy Class C3 = 0.02% MR



Type	Order Number	Nominal Load		Cable m	Length ft	Signal	List Price USD
		kg	lb				
PR 43/6 kg C3MR	9409 243 07006	6	12	3	10	2mV/V	\$153
PR 43/10 kg C3MR	9409 243 07010	10	20	3	10	2mV/V	\$153
PR 43/15 kg C3MR	9409 243 07015	15	30	3	10	2mV/V	\$153
PR 43/20 kg C3MR	9409 243 07020	20	40	3	10	2mV/V	\$153
PR 43/30 kg C3MR	9409 243 07030	30	60	3	10	2mV/V	\$153
PR 43/50 kg C3MR	9409 243 07050	50	100	3	10	2mV/V	\$153
PR 43/75 kg C3MR	9409 243 07075	75	150	3	10	2mV/V	\$153
PR 43/100 kg C3MR	9409 243 07110	100	200	3	10	2mV/V	\$153
PR 43/200 kg C3MR	9409 243 07120	200	400	3	10	2mV/V	\$153

## PR 47 - High Capacity Single Point Aluminum Load Cells

Accuracy Class C3 = 0.02% MR



Type	Order Number	Nominal Load		Cable m	Length ft	Signal	List Price USD
		kg	lb				
PR 47/100 kg C3MR	9409 247 07110	100	200	3	10	2mV/V	\$364
PR 47/150 kg C3MR	9409 247 07115	150	300	3	10	2mV/V	\$364
PR 47/200 kg C3MR	9409 247 07120	200	400	3	10	2mV/V	\$364
PR 47/250 kg C3MR	9409 247 07125	250	500	3	10	2mV/V	\$364
PR 47/300 kg C3MR	9409 247 07130	300	600	3	10	2mV/V	\$364
PR 47/500kg C3MR	9409 247 07150	500	1000	3	10	2mV/V	\$364
PR 47/750kg C3MR	9409 247 07175	750	1500	3	10	2mV/V	\$364



## PR 57 - Single Point Stainless Steel Load Cell



- Nominal capacity from 300 kg to 500 kg
- Load cell for single point platforms
- For platform size up to 24"
- Stainless Steel
- IP66 + IP67



Type	Order Number	Description	Signal	Cable	List Price USD
PR 57/300kg C3MR	9409 257 07130	High Capacity Single Point Load Cell 300 kg	2mV/V	3m	<b>\$573</b>
PR 57/500kg C3MR	9409 257 07150	High Capacity Single Point Load Cell 500 kg	2mV/V	3m	<b>\$573</b>

## PR 58 - Single Point Stainless Steel Load Cell



- Nominal capacity from 250 kg to 500 kg
- Load cell for single point platforms
- For platform size up to 24"
- Stainless Steel



Type	Order Number	Description	Signal	Cable	List Price USD
PR 58/100kg C3MR	9409 258 07110	High Capacity Single Point Load Cell 100 kg	2mV/V	3m	<b>\$1,284</b>
PR 58/250kg C3MR	9409 258 07125	High Capacity Single Point Load Cell 250 kg	2mV/V	3m	<b>\$1,284</b>
PR 58/500kg C3MR	9409 258 07150	High Capacity Single Point Load Cell 500 kg	2mV/V	3m	<b>\$1,284</b>



# Nito

## PR 77 - Bending Beam Load Cell



- Nominal capacity from 10 kg to 0.5 t
- For platform scales and Tank & Hopper applications
- C6 available upon request
- Stainless Steel



Type	Order Number	Description	Signal	Cable	List Price USD
PR 77/10kg C3MR	9409 277 07010	Compact Bending Beam 10 kg	2mV/V	3m	\$419
PR 77/20kg C3MR	9409 277 07020	Compact Bending Beam 20 kg	2mV/V	3m	\$419
PR 77/50kg C3MR	9409 277 07050	Compact Bending Beam 50 kg	2mV/V	3m	\$419
PR 77/100kg C3MR	9409 277 07110	Compact Bending Beam 100 kg	2mV/V	3m	\$419
PR 77/200kg C3MR	9409 277 07120	Compact Bending Beam 200 kg	2mV/V	3m	\$419
PR 77/250kg C3MR	9409 277 07125	Compact Bending Beam 250 kg	2mV/V	3m	\$419
PR 77/500kg C3MR	9409 277 07150	Compact Bending Beam 500 kg	2mV/V	3m	\$419

### Accessories for MP 77 and PR 77

Type	Order Number	Description	Height	List Price USD
PR 97/00N	9405 300 97001	Mini FLEX mounting kit for PR 77, MP 77 up to 250	2.85"	\$286
PR 97/01N	9405 300 97011	Mini FLEX mounting kit for PR 77, MP 77 500 kg	2.85"	\$331



## Tigo

### PR 76 - Tension S-Type Load Cell



- Nominal capacity range from 60 kg to 5 t
- Robust tension load cell with high accuracy and linearity
- Stainless Steel
- IP67



#### Tension S-Type Load Cell, Stainless Steel, OIML R60 Class N = 0.03%

Type	Order Number	Description	Signal	Cable	List Price USD
PR 76/60kg N	9409 276 01060	S-Type Load Cell 60kg	2mV/V	5m	<b>\$499</b>
PR76/125kgN	9409 276 01112	S-Type Load Cell 125kg	2mV/V	5m	<b>\$499</b>
PR 76/250kg N	9409 276 01125	S-Type Load Cell 250kg	2mV/V	5m	<b>\$499</b>
PR 76/500kg N	9409 276 01150	S-Type Load Cell 500kg	2mV/V	5m	<b>\$499</b>
PR 76/1000kg N	9409 276 01210	S-Type Load Cell 1t	2mV/V	5m	<b>\$499</b>
PR 76/2000kg N	9409 276 01220	S-Type Load Cell 2t	2mV/V	5m	<b>\$552</b>
PR 76/3000kg N	9409 276 01230	S-Type Load Cell 3t	2mV/V	5m	<b>\$615</b>
PR 76/5000kg N	9409 276 01250	S-Type Load Cell 5t	2mV/V	5m	<b>\$615</b>

#### Tension S-Type Load Cell, Stainless Steel, OIML R60 Class C3 = 0.025%

Type	Order Number	Description	Signal	Cable	List Price USD
PR 76/60kg C3	9409 276 03060	S-Type Load Cell 60kg	2mV/V	5m	<b>\$520</b>
PR 76/125kg C3	9409 276 03112	S-Type Load Cell 125kg	2mV/V	5m	<b>\$520</b>
PR 76/250kg C3	9409 276 03125	S-Type Load Cell 250kg	2mV/V	5m	<b>\$520</b>
PR 76/500kg C3	9409 276 03150	S-Type Load Cell 500kg	2mV/V	5m	<b>\$520</b>
PR 76/1000kg C3	9409 276 03210	S-Type Load Cell 1t	2mV/V	5m	<b>\$520</b>
PR 76/2000kg C3	9409 276 03220	S-Type Load Cell 2t	2mV/V	5m	<b>\$573</b>
PR 76/3000kg C3	9409 276 03230	S-Type Load Cell 3t	2mV/V	5m	<b>\$637</b>
PR 76/5000kg C3	9409 276 03250	S-Type Load Cell 5t	2mV/V	5m	<b>\$637</b>

### PR 76 - Accessories Swivel Bearings

Type	Order Number	Description	Height	List Price USD
PR 96/00N	9405 300 96001	Swivel bearing for PR 76 60 kg up to 500 kg	2.1"	<b>\$54</b>
PR 96/01N	9405 300 96011	Swivel bearing for PR 76 1t up to 5t	2.1"	<b>\$65</b>







## Cable Junction Boxes

Type	Order Number	Description	Dimensions		Material	Shipping Weight lb	List Price USD
			Inches				
PR6130/08	9405 361 30084	8 load cells	7.9 x 4.8 x 3.0		Poly-Carb	1.9	\$246
PR6130/04N	9405 361 30044	4 load cells, IP67	6.9 x 3.2 x 3.0		Aluminum	3.0	\$518
PR6130/34Sa	9405 361 30344	4 load cells, IP68 & 69K	7.5 x 6.3 x 1.4		Stainless Stl	3.0	\$500
PR6130/35S	9405 361 30354	4 load cells, IP68 & 69K, small design	4.1 x 6.8 x 1.9		Stainless Stl	3.0	\$536
PR6130/38S	9405 361 30384	8 load cells, IP68 & 69K	9.0 x 6.0 x 2.3		Stainless Stl	3.7	\$595

## Cable Junction Boxes EX Approved (ATEX Zone 1/21 and 2/22, cFMus Class I, II, III Div. 1 and Class I, II, III Div. 2)

Type	Order Number	Description	Dimensions		Material	Shipping Weight lb	List Price USD
			Inches				
PR6130/64Sa	9405 361 30644	4 load cells, IP68 & 69K	7.5 x 6.3 x 1.4		Stainless Stl	3.7	\$549
PR6130/65S	9405 361 30654	4 load cells, IP68 & 69K, small design	4.1 x 6.8 x 1.9		Stainless Stl	3.0	\$563
PR6130/68S	9405 361 30684	8 load cells, IP68 & 69K	9.0 x 6.0 x 2.3		Stainless Stl	3.7	\$644

## Installation Cable

Type	Order Number	Description	Length		Shipping Weight lb	List Price USD
			m	ft		
PR6135/FT	U1-PR6135	Extension Cable	-	per ft	0.12/ft	\$3.50
PR6135/11	9405 361 35112	Extension Cable	10	33	4.0	\$128
PR6135/21	9405 361 35212	Extension Cable	20	65	8.4	\$246
PR6135/31	9405 361 35312	Extension Cable	30	98	11.5	\$363
PR6135/51	9405 361 35512	Extension Cable	50	164	18.1	\$563
PR6135/12	9405 361 35122	Extension Cable	100	328	28.7	\$1,125
PR6135/32	9405 361 35322	Extension Cable	300	984	95.6	\$3,433
PR6135/01A	9405 361 35019	Extension Cable	-	per ft	0.12/ft	\$13

## Extended Load Cell Cables

Type	Order Number	Description	Length		Shipping Weight lb	List Price USD
			m	ft		
LC Cable (5-12)	LC Cable (5-12)	Cable - replace 5m (16ft) with 12m	12	39	-	\$256
LC Cable (5-20)	LC Cable (5-20)	Cable - replace 5m (16ft) with 20m	20	65	-	\$323
LC Cable (12-20)	LC Cable (12-20)	Cable - replace 12m (39ft) with 20m	20	65	-	\$267

Type	Order Number	Description	List Price USD
Paper Tags - 1P	1P - per piece	1 - 5 pcs.	\$43
Paper Tags - 2P	2P - per piece	6 - 20 pcs.	\$34
Paper Tags - 3P	3P - per piece	21 - 50 pcs.	\$22
Paper Tags - 4P	4P - per piece	51 pcs. and more	\$11
Metal Tags - 1M	1M - per piece	1 - 5 pcs.	\$87
Metal Tags - 2M	2M - per piece	6 - 20 pcs.	\$75
Metal Tags - 3M	3M - per piece	21 - 50 pcs.	\$64
Metal Tags - 4M	4M - per piece	51 pcs. and more	\$53



## Maxxis 5 - order numbers with fixed defined configuration



Type	Order Number	Description	List Price USD
PR5900/00	9405 159 00001	Maxxis 5 Process Controller - Panel housing (G1), A/D converter(W1), 110/230V (L0), Basic Application (H0), Digital Input passive (DE1)	\$2,970
PR5900/01	9405 159 00011	Maxxis 5 Process Controller - Panel housing (G1), A/D converter(W1), 24V (L8), Basic Application (H0) Digital Input passive (DE1)	\$3,241
PR5900/22	9405 159 00221	Maxxis 5 Process Controller - Table top housing (G2), Rear plate cable glands (L12), A/D converter (W1), 110/230V (L0), Basic Application (H0), Digital Input passive (DE1), Power cable with USA plug(US)	\$3,782
PR5900/23	9405 159 00231	Maxxis 5 Process Controller - Housing with bracket (G3), Rear plate cable glands (L12), A/D converter(W1), 110/230V (L0), Basic Application (H0) Digital Input passive (DE1), Power cable with USA plug(US)	\$3,782
PR5900/24	9405 159 00241	Maxxis 5 Process Controller - Panel housing (G1), 110/230V (L0), Basic Application (H0), Digital Input passive (DE1), Power cable with USA plug(US)	\$0
PR5900/27	9405 159 00271	Maxxis 5 Process Controller - Housing with bracket (G3), Rear plate cable glands (L12), A/D Converter (W1), 110/230V (L0), Basic Application (H0), <b>FM Approval Class I,II,III Div. 2 (Y3)</b> , Digital Input passive (DE1), USA Power cable	\$4,280
PR5900/28	9405 159 00281	Maxxis 5 Process Controller - Panel housing (G1), 24V (L8), Basic Application (H0), <b>FM Approval Class I,II,III Div. 2 (Y3)</b> , Digital Input passive (DE1), USA Power cable	\$3,203

## Maxxis 5 Accessories - field installable - shipped separately

Type	Order Number	Description	List Price USD
PR5900/10	9405 359 00101	A/D Converter	\$311
PR5900/32	9405 359 00321	Interface Card Serial 2 x RS232 (incl. supply for IS Platform)	\$388
PR5900/04	9405 359 00041	Interface Card Serial 2 x RS485 (incl. supply for IS Platform)	\$388
PR5900/07	9405 359 00071	Interface Card Analog 1x Input /1x Output 0/4-20 mA	\$322
PR5900/12	9405 359 00121	Interface Card Digital 4x Input / 4x Output (active)	\$246
PR5900/13	9405 359 00131	Interface Card Digital 4x Input / 4x Output (passive)	\$246
PR5900/17	9405 359 00171	Control I/O Card 6-Inputs/8 Outputs	\$434
PR1721/51	9405 317 21511	Interface Card Profibus DP	\$693
PR1721/54	9405 317 21541	Interface Card DeviceNet	\$693
PR1721/55	9405 317 21551	Interface Card CC-Link	\$1,077
PR1721/76	9405 317 21761	Interface Card Profinet	\$812
PR1721/77	9405 317 21771	Interface Card Ethernet/IP	\$812
PR5230/30	9405 352 30301	Ethernet female connector RJ45, IP65	\$195
PR5230/31	9405 352 30311	Ethernet cable with cable glance, 7M, RJ45 plug, Industrial Material	\$195
PR5900/41	9405 359 00411	Serial Cable with cable glands (9 pin D-Sub plug male)	\$148
PR5900/42	9405 359 00421	Serial Cable with cable glands (9 pin D-Sub plug female)	\$148
PR5900/43	9405 359 00431	Serial Cable with cable glands (12 pin round plug male)	\$148
PR5900/44	9405 359 00441	Serial Cable with cable glands (12 pin round plug female)	\$148
PR5900/60	9405 359 00601	Maxxis 5 ATEX Remote Terminal, YPSO* Power Supply Required	\$2,344
PR5900/70	9405 359 00701	Maxxis 5 ATEX Remote Terminal, Table Top Housing YPSC* Power Supply required	\$3,005
PR5900/81	PR 8501	PHASE Application License	\$508
PR5900/83	9405 359 00831	BATCHING Application License	\$508
PR5900/84	9405 359 00841	TRUCK Application License	\$290
PR5900/86	9405 359 00861	IBC - One Component Filling License	\$295
PR5900/87	9405 359 00871	Tillt Correction License (Software Basic)	\$295
PR5900/91	9405 359 00911	Alibi Memory License	\$295
PR5900/92	9405 359 00921	OPC Server License	\$295
PR5900/93	9405 359 00931	Special License " Batch Modes" for Programming	\$184

## Build To Order - Maxxis 5 Process Controller



Type	Description	Order Number	List Price USD
Maxxis 5	Process Controller includes Ethernet TCP/IP, RS232/485/422, USB, SD Card, digital 4x In- / 4x Outputs	9405 159 00000	\$2,841

## Build To Order - Options for Maxxis 5

Type	Description		List Price USD
<b>Slot A / B</b>			
W1 / W2	A/D Converter	0 / 0	\$444
X3 / X4	Disconnectable Load Cell	0 / 0	\$195
DE1	Standard 4x Digital Input Passive (external 24V supply needed for inputs)	Standard	\$0
DE2	Standard 4x Digital Input Active (internal 12V supply for inputs)		\$49
L0	110/ 240V AC Power Supply	Standard	\$0
L8	24V DC Power Supply		\$292
G1	Maxxis 5 in Panel Housing	Standard	\$0
G2	Maxxis 5 in Table Top Housing		\$763
G3	Maxxis 5 in Table Top Housing with U-Bracket (turned front)		\$763
G4	Maxxis 5 in Blackbox Housing (no Y2/Y3)		-\$227
L12	Backplate with cable glands		\$0
L13	Backplate with EzEntry and cable glands (no Y2/Y3)		\$238
US	Cable for power supply for USA, Typ LAP31 (only with table top or U-Bracket housing)		\$0
EU	Cable for power supply with europlug, Typ CEE7 (only with table top or U-Bracket housing)		\$0
GB	Cable for power supply for GB, Typ 360 (only with table top or U-Bracket housing)		\$0
N31	Cable for power supply 24V without connector (open ended) (only with table top or U-Bracket housing)		\$0
B14/ B24	Interface Card Serial 2 x RS232	0 / 0 / -	\$411
B15/ B25	Interface Card Serial 2 x RS485 (incl. supply for one IS Platform)	0 / 0 / -	\$411
B16 / B26	Interface Card Analog 1x Input /1x Output 0/4-20 mA	0 / 0 / -	\$373
B17 / B27	Interface Card Digital 4x Input / 4x Output (active - internal 12V supply for inputs)	0 / 0 / -	\$276
B18 / B28	Interface Card Digital 4x Input / 4x Output (passive)	0 / 0 / -	\$276
B19 / B29	Interface Card - Digital 6x Input (passive) / 8x Output (optocoupler)	0 / 0	\$384
Y2	Zone 2/22 Atex Approval		\$195
Y3	FM Approval Class I,II,III Div. 2		\$233
CX1	Connection to Maxxis 5 Ex Remote Terminal Atex only		\$162

## Build To Order - Options for Maxxis 5



Type	Description	Slot 1 / 2 / 3	List Price USD
C21	Interface Card Profibus DP for	- / - / 0	\$758
C24	Interface Card DeviceNet	- / - / 0	\$758
C25	Interface Card CC-Link	- / - / 0	\$1,255
C26	Interface Card Profinet	- / - / 0	\$920
C27	Interface Card Ethernet/IP	- / - / 0	\$920
H0	BASIC Application	Standard	\$0
I4	PHASE Application License (incl. OPC license)		\$579
I5	COUNT Application License		\$325
I6	BATCHING Application License		\$579
I8	TRUCK Application License (incl. Alibi memory license)		\$482
I10	FLOW Application License (available Q3.2014)		\$574
I11	IBC - One Component Filling License		\$357
I12	Tilt Correction License (Software Basic)		\$357
E5	Alibi Memory License		\$357
E6	OPC Server License		\$357
E9	Special License "Batch Modes" for using in individual Programming		\$216

## Build To Order - Options for Maxxis 5

Cable with cable glands	Bulltin RS232	Bulltin RS485	Slot 1		Slot 2		List Price USD
			1. RS485	2. RS485	1. RS485	2. RS485	
serial cable with 9 pin D-Sub male connector, 6m	M16	M80	M76	M85	M78	M90	\$166
serial cable with 9 pin D-Sub female connector, 6m	M17	M81	M77	M86	M79	M91	\$166
serial cable with 12 pin round connector male, 6m	M18	M74	M61	M63	M66	M68	\$166
serial cable with 12 pin round connector female, 6m	M19	M75	M62	M64	M67	M69	\$166
Cable for integrated Ethernet	Bulltin Ethernet						List Price USD
Ethernet connector female RJ45, IP66	M39						\$193
Ethernet cable with cable gland, 7m, RJ45 connector	M40						\$114
Cable for integrated USB							List Price USD
N29	USB connector female USB Typ A (no Y2/Y3)						\$233
N30	USB cable for YBR03* Scanner						\$133



## Maxxis 4 - order numbers with fixed defined configuration



Type	Order Number	Description	List Price USD
PR5500/00	9405 155 00001	Maxxis 4 Process Controller A/D Converter (W1), 110/230V (L0), Basic Application (H0)	\$2,055
PR5500/01	9405 155 00011	Maxxis 4 Process Controller A/D Converter (W1), 24V (L8), Basic Application (H0)	\$2,261
PR5500/20	9405 155 00201	Maxxis 4 Process Controller A/D Converter (W1), 110/230V (L0), 6/8 digital I/O (B19), Batching Application (I6)	\$2,833
PR5500/21	9405 155 00211	Maxxis 4 Process Controller A/D Converter (W1), 24V (L8), 6/8 digital I/O (B19), Batching Application (I6)	\$3,033
PR5500/30	9405 155 00301	Maxxis 4 Process Controller A/D Converter (W1), 110/230V (L0), 6/8 digital I/O (B19), IBC Application (I11)	\$2,663
PR5500/31	9405 155 00311	Maxxis 4 Process Controller A/D Converter (W1), 24V (L8), 6/8 digital I/O (B19), IBC Application (I11)	\$2,869
PR5500/90	9405 155 00901	Maxxis 4 Process Controller A/D Converter (W1), 110/230V (L0), Phase Application (I4)	\$2,508
PR5500/94	9405 155 00941	Maxxis 4 Process Controller A/D Converter (W1), 24V (L8), Phase Application (I4)	\$2,719
PR5500/12	9405 155 00121	Maxxis 4 Process Controller A/D Converter (W1), 110/230V (L0), Basic Application (H0), Dual RS-232 Slot 1 (B14), Digital outputs (Passive) Slot 2 (B28), Mounting frame for safe inst. (L15), NTEP Label, Mark & Sealing (F4)	\$2,601

## Maxxis 4 Accessories - field installable - shipped separately

Type	Order Number	Description	List Price USD
PR5500/10	9405 355 00101	A/D Converter	\$311

PR5500/32	9405 355 00321	Interface Card Serial 2 x RS232	\$388
PR5500/04	9405 355 00041	Interface Card Serial 2 x RS485 (incl. supply for IS Platform)	\$388
PR5500/07	9405 355 00071	Interface Card Analog 1x Input /1x Output 0/4-20 mA	\$322
PR5500/12	9405 355 00121	Interface Card Digital 4x Input / 4x Output (passive)	\$235
PR5500/13	9405 355 00131	Interface Card Digital 4x Input / 4x Output (active)	\$235
PR5500/17	9405 355 00171	Control I/O Card 6-Inputs/8 Outputs	\$437

PR1721/61	9405 317 21611	Interface Card Profibus DP	\$693
PR1721/64	9405 317 21641	Interface Card DeviceNet	\$693
PR1721/65	9405 317 21651	Interface Card CC-Link	\$1,077
PR1721/66	9405 317 21661	Interface Card Profinet	\$812
PR1721/67	9405 317 21671	interface Card Ethernet/IP	\$812

PR5500/81	9405 355 00811	PHASE Application License	\$508
PR5500/83	9405 355 00831	BATCHING Application License	\$508
PR5500/86	9405 355 00861	IBC - 1 component filling Application License	\$295
PR5500/87	9405 355 00871	Tilt Correction License (Software Basic)	\$295
PR5500/92	9405 355 00921	OPC Server License	\$295
PR5500/93	9405 355 00931	Special License " Batch Modes" for Programming	\$186

PR5500/19	9405 355 00191	Adaptor mounting kit to convert X5 slot for Maxxis 4 and X3	\$135
PR1620/10	9405 316 20101	Wall mount and stand-alone enclosure for Maxxis 4, X3 and CSD-912	\$438
PR1899/98	9405 318 99981	W&M label NTEP for Maxxis 4 incl. label, calibration mark and sealing	\$90

## MTL Kit for Ex applications

Type	Order Number	Description	List Price USD
MTL-KIT	MTL-KIT	FM approved load cell barrier	\$968

# Maxxis 4 Process Controller



Type	Description	Order Number	List Price USD
Maxxis 4	Process Controller includes Ethernet TCP/IP, RS232/485/422, USB, SD Card	9405 155 00000	\$1,780

## Build To Order - Options for Maxxis 4

Type	Description		List Price USD
<b>Slot 1 / 2</b>			
W1	A/D Converter	0 / 0	\$346
L0	110/ 240V AC Power Supply	Standard	\$0
L8	24V DC Power Supply		\$292
B14/ B24	Interface Card Serial 2 x RS232	0 / 0	\$411
B15/ B25	Interface Card Serial 2 x RS485 (incl. supply for IS Platform)	0 / 0	\$411
B16 / B26	Interface Card Analog 1x Input /1x Output 0/4-20 mA	0 / 0	\$373
B17 / B27	Interface Card Digital 4x Input / 4x Output (active)	0 / 0	\$276
B18 / B28	Interface Card Digital 4x Input / 4x Output (passive)	0 / 0	\$276
B19 / B29	Interface Card - Digital 6x Input (passive) / 8x Output (optocoupler)	0 / 0	\$384

## Build To Order - Options for Maxxis 4

Type	Description		List Price USD
<b>Slot 1 / 2</b>			
C21	Interface Card Profibus DP for	- / 0	\$758
C24	Interface Card DeviceNet	- / 0	\$758
C25	Interface Card CC-Link	- / 0	\$1,255
C26	Interface Card Profinet	- / 0	\$920
C27	Interface Card Ethernet/IP	- / 0	\$920
H0	BASIC Application	Standard	\$0
I4	PHASE Application License (incl. OPC license)		\$579
I6	BATCHING Application License		\$579
I11	IBC - One Component Filling License		\$357
I12	Tilt Correction License (Software Basic)		\$357
E5	Alibi Memory License		\$357
E6	OPC Server License		\$357
E9	Special License " Batch Modes" for using in individual Programming		\$216





## X3 Process Indicator

Type	Order Number	Description	Shipping Weight lb	List Price USD
PR5410/00	9405 154 10003	X3 Process Indicator 110/230 VAC	5.1	\$1,569
PR5410/01	9405 154 10013	X3 Process Indicator 24 V DC	5.1	\$1,897
PR5410/03	9405 154 10033	X3 Process Indicator 24V DC - ATEX Zone 2/22	5.1	\$2,460

## X3 Hardware Accessories - field installable - shipped separately

Type	Order Number	Description	Shipping Weight lb	List Price USD
PR5510/02	9405 355 10023	X4 and X3 - Serial Interface 2 X RS232	0.1	\$453
PR5510/04	9405 355 10043	X4 and X3 - Serial interface RS232 / RS 485	0.1	\$453
PR5510/07	9405 355 10073	X4 and X3 - Analog I/O's 4 In / 1Out	0.1	\$634
PR5510/08	9405 355 10083	X4 and X3 -BCD interface open emitter	0.1	\$459
PR5510/09	9405 355 10093	X4 and X3 -BCD interface open collector	0.4	\$459
PR5510/12	9405 355 10123	X4 and X3 -Control I/O's 6/12 Opto	0.1	\$459
PR1721/31	9405 317 21313	X3 and X4 - Profibus DP Interface Card	0.1	\$812
PR1721/32	9405 317 21321	X3 and X4 - Interbus Interface Card	0.3	\$971
PR1721/34	9405 317 21343	X3 and X4 - DeviceNet Interface Card	0.3	\$812
PR1721/35	9405 317 21353	X3 and X4 - CC-Link Interface Card	0.3	\$1,131
PR1721/36	9405 317 21363	X3 and X4 - Profinet Interface Card	0.3	\$839
PR1721/37	9405 317 21373	X3 and X4 - Ethernet/IP Interface Card	0.3	\$839
PR5500/19	9405 355 00191	Adaptor mounting kit to convert X5 slot for Maxxis 4 and X3	12.9	\$135
PR1620/10	9405 316 20101	Wall mount and stand-alone enclosure for Maxxis 4 and X3	1.0	\$438
PR1899/97	9405 318 99971	W&M label NTEP for X3 incl. label, calibration mark and sealing	1.0	\$90



PR 5230 Process Transmitter In Field Housing



Type	Order Number	Description	Shipping Weight lb	List Price USD
PR5230/00	9405 152 30001	Includes: 110/220 VAC Self Sensing Power Supply, A/D Converter, 3x digital input Passive (requires 24V), 3x digital output relays passive, IP66 Stainless Steel Field Housing	0.5	\$2,403
PR5230/02	9405 152 30021	Includes: 24V Power Supply, A/D Converter, 3x digital input Passive (requires 24V), 3x digital output relays passive, IP66 Stainless Steel Field Housing	0.5	\$2,608

PR 5230 Accessories- field installable - shipped separately

Type	Order Number	Description	Shipping Weight lb	List Price USD
PR5230/06	9405 352 30061	Interface Card Analog Output 0/4-20 mA	0.5	\$178
PR5230/22	9405 352 30221	Load Cell connection Board up to 4 Load Cells	0.5	\$167
PR5230/30	9405 352 30301	Ethernet female connector RJ45, IP65	0.5	\$195
PR5230/31	9405 352 30311	Ethernet cable with cable glance, 7M, RJ45 plug, Industrial Material	3.0	\$195
PR1721/41	9405 317 21411	Interface Card Profibus DP	0.3	\$969
PR1721/42	9405 317 21421	Interface Card Interbus-S	0.3	\$1,131
PR1721/44	9405 317 21441	Interface Card DeviceNet	0.3	\$969
PR1721/45	9405 317 21451	Interface Card CC-Link	0.3	\$1,315
PR1721/46	9405 317 21461	Interface Card Profinet	0.3	\$1,104
PR1721/47	9405 317 21471	Interface Card Ethernet/IP	0.3	\$1,104

MTL Kit for Ex applications

Type	Order Number	Description	Shipping Weight lb	List Price USD
MTL-KIT	MTL-KIT	FM approved load cell barrier	1.0	\$968

## PR 5230 Process Transmitter in Field Housing



### Build To Order PR 5230 Process Transmitter

Type	Order Number	Description	Shipping Weight lb	List Price USD
PR5230	9405 152 30000	Base Unit, 110/220 VAC Self Sensing Power Supply, Field Housing, IP66, SS	1.0	\$2,051

### Build To Order options for PR 5230

Type	Description	STD W/ Base Unit	List Price USD
L0	110/ 240V AC Power Supply	x	\$0
L8	24V DC Power Supply		\$208
W1	Weighing Point (A/D Converter)		\$373
WE1	Weighing Point (A/D Converter) with instrincally safe Load Cell supply		\$736
Y2	Zone 2/22 ATEX Approval		\$209
DE1	Digital Input Passiv (external 24V supply needed)	x	\$0
DE2	Digital Input Activ (internal 12V supply)		\$43
DA1	Digital Relais Output passiv	x	\$0
DA2	Digital Optocoupler Output passiv		\$43

Type	Description	Slot 1/2/3	List Price USD
C11	Interface Card Analog Output 0/4-20 mA	0/-/-	\$222
C21	Interface Card Profibus DP	-/0/-	\$860
C22	Interface Card Interbus-S	-/0/-	\$1,212
C24	Interface Card DeviceNet	-/0/-	\$860
C25	Interface Card CC-Link	-/0/-	\$1,347
C26	Interface Card Profinet	-/0/-	\$1,001
C27	Interface Card Ethernet/IP	-/0/-	\$1,001
C31	Load Cell connection Board up to 4 Load Cells	-/-/0	\$167
M39	Ethernet female connector RJ45, IP66		\$232
M40	Ethernet cable with cable glance, 7M, RJ45 plug, Industrial Material		\$232



## PR 5220 Ethernet Transmitter

Type	Order Number	Description	Shipping Weight lb	List Price USD
PR5220/00	9405 152 20003	Enet Trans, analog output, 0/4-20 mA, 24 VDC	1.0	\$1,704
PR5220/01	9405 152 20013	Enet Trans, analog output, 0/4-20 mA, 24 VDC, with ProfiBus-DP	1.0	\$2,050
PR5220/04	9405 152 20043	Enet Trans, analog output, 0/4-20 mA, 24 VDC, with DeviceNet	1.0	\$2,050
PR5220/06	9405 152 20063	Enet Trans, analog output, 0/4-20 mA, 24 VDC, with ProfiNet	1.0	\$2,050
PR5220/07	9405 152 20073	Enet Trans, analog output, 0/4-20 mA, 24 VDC, with Ethernet-IP	1.0	\$2,050

## PR 5211 Process Transmitter with USB

Type	Order Number	Description	Shipping Weight lb	List Price USD
PR5211/00	9405 152 11003	Profibus-DP, analog output, 0/4-20 mA	1.0	\$1,674
PR5211/10	9405 152 11103	Analog output, 0/4-20 mA	1.0	\$1,421
PR5211/11	9405 152 11113	Profibus-DP	1.0	\$1,251



## CSD-892 - Weight transmitter



- Configurable display
- Rs 422/485 interface
- Basic dosing options



Type	Order Number	Description	Price in USD
CSD-892-76	9409 108 92001	Weight transmitter RS-422/485	\$1,512

## CSD-903 - Weight indicator



- 7 digit display
- RS 422/485 interface & 4..20mA analogue output
- Basic Dosing options

Type	Order Number	Description	Price in USD
CSD-903-07	9409 109 03001	Weight transmitter RS-422/485 & 4..20mA analogue output	\$1,623

## CSD-912 & CSD-918 - Weight controller



- Weight value analysis
- Intuitive operation via touch display
- Material management and dosing

Type	Order Number	Description	Price in USD
CSD-912-07-76	9409 109 12001	Weight controller RS-422/485 & 4..20mA analogue output	\$3,030
CSD-918-07-76	9409 109 18001	Weight controller with additional measurement of feeding and discharging with a servo amplifier and servo motor	\$5,086

## EzCTS Software

Type	Order Number	Description	Price in USD
EzCTS Software	9409 390 01001	Software for communication with CSD weighing electronics	\$100





## ProRecipe XT Stand Alone Recipe Batch Kit



Type	Order Number	Description	List Price USD
PR-BATCH		Batch system includes: ProRecipeXT for Stand Alone installation Maxxis 5 Process Controller with housing and wall bracket CAPS1U-200EE-LU Installation and training quoted separately	\$10,780

## ProRecipe XT Stand Alone Recipe Batch Kit for Validated Systems

Type	Order Number	Description	List Price USD
PR-BATCH - Validated		Batch system includes:  ProRecipeXT for Stand Alone installation for validated system Maxxis 5 Process Controller with housing and wall bracket CAPS1U-200EE-LU Installation and training quoted separately	\$13,385

## PR 1750 - Program Development Tool

Type	Order Number	Description	List Price USD
PR1750/60	9405 317 50601	Development Tool / PR 1750	\$1,136

## Accessories

### Remote Displays and Terminals In Push-In Housing

Type	Order Number	Description	Shipping Weight lb	List Price USD
PR5110/00	9405 351 10001	Remote Display, Panel Mount, 110/240V	5.0	\$1,218
PR5110/01	9405 351 10011	Remote Display, Panel Mount, 24V	5.0	\$1,366
PR5110/10	9405 351 10101	Remote Display, IP 65 Housing, 110/240V	5.0	\$1,366
PR5110/11	9405 351 10111	Remote Display, IP 65 Housing, 24V	5.0	\$1,584

### Remote Displays and Terminals Atex Only

Type	Order Number	Description	Shipping Weight lb	List Price USD
PR5110/60	9405 351 10601	Intrinsically Safe Remote Display, Panel Mount, 12V for Ex Zone 1/21	5.0	\$1,743
PR5110/70	9405 351 10701	Intrinsically Safe Remote Display, IP 65 Housing, 12V for Ex Zone 1/21	5.0	\$1,923

## Printers

Type	Order Number	Description	Shipping Weight lb	List Price USD
YDP21	YDP21	Statistical Data Printer	4.5	\$1,066
ZD420d	ZD420d	Thermal Label Printer	4.5	\$2,195

## PR 8501 - Pro Recipe XT



### Pro Recipe XT Software

Type	Order Number	Description	List Price USD
PR8501/10	9405 385 01101	ProRecipe XT - Single location version Non Regulated, CD and License	\$4,864
PR8501/15	9405 385 01151	ProRecipe XT - Maxxis 5 Bundle for a network based installation of ProRecipeXT exclusive for Maxxis 5 Weighing clients. Including ProRecipeXT Server with MS-SQL Express 2014 data base server incl. one Management client (PR8501/20), one Maxxis 5 Weighing Client (PR8501/23), requires application software H1 on Maxxis 5.	\$5,614
PR8501/20	9405 385 01201	ProRecipe XT - Server (incl. 1 Management Client) Non Regulated, CD and License	\$8,652
PR8501/21	9405 385 01211	ProRecipe XT - Management Client, License	\$2,916
PR8501/22	9405 385 01221	ProRecipe XT - Weighing Client, License	\$2,862
PR8501/23	9405 385 01231	ProRecipe XT - Weighing Client for Maxxis 5, License	\$1,261
PR8501/30	9405 385 01301	ProRecipe XT - Calibration check, Licence	\$2,646
PR8501/31	9405 385 01311	ProRecipe XT - Non Minebea Intec Scale Driver , License (per connected scale)	\$1,115
PR8501/33	9405 385 01331	ProRecipe XT - Module for integration of Standard Operating Procedures (SOP)	\$1,803
PR8501/34	9405 385 01341	ProRecipe XT - Module EasyFill for automatic dosing of single components	\$1,622
PR8501/35	9405 385 01351	ProRecipe XT - Module for integrating a completeness check function	\$8,868
PR8501/40	9405 385 01401	ProRecipe XT - Data Interface basic module (for data communication with ERP/MES etc.)	\$10,816

### Pro Recipe XT Software Regulated Version for Validation

Type	Order Number	Description	List Price USD
PR8502/10	9405 385 02101	ProRecipe XT - Single location version Non Regulated, CD and License	\$9,301
PR8502/15	9405 385 02151	ProRecipe XT - Maxxis 5 Bundle for a network based installation of ProRecipeXT exclusive for Maxxis 5 Weighing clients. Including ProRecipeXT Server with MS-SQL Express 2014 data base server incl. one Management client (PR8501/20), one Maxxis 5 Weighing Client (PR8501/23), requires application software H1 on Maxxis 5.	\$8,219
PR8502/20	9405 385 02202	ProRecipe XT - Server (incl. 1 Management Client) Non Regulated, CD and License	\$12,223
PR8502/21	9405 385 02211	ProRecipe XT - Management Client, License	\$4,107
PR8502/22	9405 385 02221	ProRecipe XT - Weighing Client, License	\$4,053
PR8502/23	9405 385 02231	ProRecipe XT - Weighing Client for Maxxis 5, License	\$1,888
PR8501/31	9405 385 01311	ProRecipe XT - Non Minebea Intec Scale Driver , License (per connected scale)	\$1,115
PR8502/32	9405 385 02321	ProRecipe XT - Non Minebea Intec Scale Driver , License (per connected scale)	\$6,487
PR8501/33	9405 385 01331	ProRecipe XT - Module for integration of Standard Operating Procedures (SOP)	\$1,803
PR8501/34	9405 385 01341	ProRecipe XT - Module EasyFill for automatic dosing of single components	\$1,622
PR8501/35	9405 385 01351	ProRecipe XT - Module for integrating a completeness check function	\$8,868
PR8501/40	9405 385 01401	ProRecipe XT - Data Interface basic module (for data communication with ERP/MES etc.)	\$10,816

# Everything from a single source

Minebea Intec provides products, solutions and services to improve the reliability, safety and efficiency of production and packaging lines in virtually all industries.

From goods receipt to goods issue – our portfolio comprises a variety of automatic and manual weighing solutions, software and services for a wide range of applications and industries.

## Process weighing and automation

- Vessel and silo scales
- Components for truck scales
- Bench and floor scales
- Batching and formulation

## Services

- Technical support
- Commissioning
- Maintenance and repair
- Upgrades
- Training courses



**Minebea Intec USA Inc.**

1180 Lincoln Ave, Suite 1

Holbrook, NY 11741

orders.us@minebea-intec.com

www.minebea-intec.us

**Minebea**  
**intec**  
The true measure

