

WEST PARK BOULEVARD
AND
SOUTH PARK BOULEVARD
CROSS-SECTIONS

204

398

TRANSIT

F.B. 204

Table showing the difference of latitude and departure in running 80 chains at any course from 1 to 60 minutes.

MINUTES	LKS.	MINUTES	LKS.	MINUTES	LKS.
I	2 $\frac{1}{3}$	21	49	41	95 $\frac{2}{3}$
2	4 $\frac{2}{3}$	22	51 $\frac{1}{3}$	42	98
3	7	23	53 $\frac{2}{3}$	43	100 $\frac{1}{3}$
4	9 $\frac{1}{3}$	24	56	44	102 $\frac{2}{3}$
5	11 $\frac{2}{3}$	25	58 $\frac{1}{3}$	45	105
6	14	26	60 $\frac{2}{3}$	46	107 $\frac{1}{3}$
7	16 $\frac{1}{3}$	27	63	47	109 $\frac{2}{3}$
8	18 $\frac{2}{3}$	28	65 $\frac{1}{3}$	48	112
9	21	29	67 $\frac{2}{3}$	49	114 $\frac{1}{3}$
10	23 $\frac{1}{3}$	30	70	50	116 $\frac{2}{3}$
11	25 $\frac{2}{3}$	31	72 $\frac{1}{3}$	51	119
12	28	32	74 $\frac{2}{3}$	52	121 $\frac{1}{3}$
13	30 $\frac{1}{3}$	33	77	53	123 $\frac{2}{3}$
14	32 $\frac{2}{3}$	34	79 $\frac{1}{3}$	54	126
15	35	35	81 $\frac{2}{3}$	55	128 $\frac{1}{3}$
16	37 $\frac{1}{3}$	36	84	56	130 $\frac{2}{3}$
17	39 $\frac{2}{3}$	37	86 $\frac{1}{3}$	57	133
18	42	38	88 $\frac{2}{3}$	58	135 $\frac{1}{3}$
19	44 $\frac{1}{3}$	39	91	59	137 $\frac{2}{3}$
20	46 $\frac{2}{3}$	40	93 $\frac{1}{3}$	60	140

Return to City Engineers Office
City Hall, San Diego, Cal.
TABLE FOR RUNNING ON SLOPES.

In the following table the first column shows the angle, the second the number of links to be added to a chain on the slopes, to make one chain, horizontal measurement.

Angle	COR. IN LINKS	Angle	COR. IN LINKS	Angle	COR. IN LINKS	Angle	COR. IN LINKS
0		0		0		0	
4	0.24	11	1.88	18	5.14	25	10.54
5	0.38	12	2.24	19	5.76	26	11.26
6	0.55	13	2.63	20	6.42	27	12.24
7	0.76	14	3.06	21	7.11	28	13.37
8	0.98	15	3.53	22	7.85	29	14.34
9	1.24	16	4.02	23	8.64	30	15.47
10	1.55	17	4.56	24	9.47	35	22.07

Return to City Engineers Office
City Hall, San Diego, Cal.

Park Poultryard, on
West side of City Park Street 100' wide
20' walks

5/8/05 Hutchinson
Erosion
Series

2

	11.26	242.01		230.75
No. 1			2.06	239.95
No. 2	11.015	252.10	0.925	241.085
No. 3	5.58	248.87	8.81	243.29
So Line of Juniper				
West Line			11.2	237.7
-			10.4	238.5
+			10.6	238.3
ct.			10.8	238.1
+			10.7	238.2
-			10.6	238.3
East Line			10.6	238.3
So East Line of Juniper				
East Line			9.3	239.6
-			9.8	239.1
+			7.9	239.0
ct.			10.2	238.7
+			10.1	238.8
-			11.0	237.9
W.L.			11.9	237.0

No 1/4 line of Juniper

West L.	248.87	11.4	237.5
-		10.6	238.3
+		10.0	238.9
ct.		10.0	238.9
+		9.3	239.6
-		9.3	239.6
East L.		9.4	239.5
Center Line of J.			
E.L.		8.3	240.6
-		9.5	239.4
+		9.0	239.9
ct.		9.5	239.4
+		10.0	238.9
-		10.6	238.3
W.L.		11.4	237.5
No 1/4 Line			
W.L.		11.4	237.5
-		10.4	238.5
+		9.6	239.3
ct.		8.8	240.1
+		8.5	240.4
-		9.7	239.7
W.L.		7.8	241.1

11° Curt line of			50° 11° of Juniper			
East L.	248.87	7.3	241.6	West L.	6.2	242.7
-		8.9	240.0	-	5.6	243.3
+		8.4	240.5	+	5.2	243.7
ct.		8.8	240.1	ct.	4.6	244.3
+		9.7	239.2	+	5.1	243.8
-		10.0	238.9	-	5.2	243.7
W.L.		11.5	237.4	East L.	6.5	242.4
11° line of Juniper				100° 11° of Juniper		
W.L.		11.3	237.6	East L.	4.6	244.3
-		9.1	239.8	-	4.2	244.7
+		8.4	240.5	+	3.2	245.7
ct.		8.8	240.1	ct.	3.5	245.4
+		7.7	241.2	+	3.3	245.6
-		8.3	240.6	-	3.8	245.1
E.L.		7.5	241.4	W.L.	4.5	244.4
5° 11° of Juniper				125° 11° of J.		
East L.		7.4	241.5	W.L.	5.1	243.8
-		7.0	241.9	-	4.6	244.3
+		7.4	241.5	+	3.5	245.4
ct.		6.8	242.1	ct.	3.1	245.8
+		6.6	242.1	+	3.1	245.8
-		7.5	241.4	-	3.5	245.4
W.L.		7.9	241.0	E.L.	4.1	244.8

150' M' of J.

East L.	3.8	245.1
—	3.0	245.9
A	2.6	246.3
Ch.	2.9	246.0
A	4.2	244.7
—	4.8	244.1
W.L.	5.2	243.7

175' M' of

W.L.	4.9	244.0
—	4.9	244.0
A	4.0	244.9
Ch.	2.9	246.0
A	2.3	246.6
—	2.3	246.6
East L.	3.1	245.8

200' M' of

E.L.	3.2	245.7
—	2.5	246.4
A	2.5	246.4
Ch.	3.1	245.8
A	3.7	245.2
—	4.5	244.4
W.L.	4.8	244.4

225' M' of

W.L.	248.87	3.7	245.2
—		3.5	245.4
A		3.4	245.5
Ch.		3.3	245.6
A		2.7	246.2
—		2.6	246.3
East L.		2.6	246.3

250' M' of

E.L.		2.3	246.6
—		1.9	247.0
A		1.4	247.5
Ch.		1.6	247.3
A		2.2	246.7
—		2.3	246.6
W.L.		2.2	246.7

7.69 255.25 1.81 247.56

300' At base of Kalmia

W.L.	7.5	247.8
—	7.3	248.0
A	7.3	248.0
Ch.	6.8	248.5
A	6.9	248.4
—	6.9	248.4
E.L.	7.3	248.0

No Curt Line of Kalamia

E.L.	250.25	7.4	247.9
-		6.9	248.4
A		6.9	248.4
ct		7.1	248.2
A		7.2	248.1
-		7.1	248.2
W.L.		7.0	248.3
	No 1/4 Line		
W.L.		6.6	248.7
-		7.0	248.3
A		7.6	247.7
ct		7.2	248.1
A		7.2	248.1
-		7.4	247.9
E.L.		7.7	247.6
	Center Line		
E.L.		7.7	247.6
-		7.3	248.0
A		7.2	248.1
ct		7.2	248.1
A		6.6	248.7
-		6.4	248.9
W.L.		6.4	248.9

No 1/4 Line of Kalamia

W.L.	6.0	249.3
-	6.3	249.0
A	6.5	248.8
ct	7.1	248.2
A	7.1	248.2
-	7.1	248.2
E.L.	7.7	247.6
	No Curt Line	
E.L.	7.9	248.4
-	7.2	248.1
A	6.9	248.4
ct	6.9	248.4
A	6.1	249.2
-	6.0	249.3
W.L.	5.7	249.6
	No Line of Kalamia	
W.L.	5.2	250.1
-	5.8	249.5
A	5.9	249.4
ct	6.1	249.2
A	5.6	249.7
-	6.5	248.8
W.L.	7.9	247.4

25' N ^o of Kalmia			
East L,	255.25	7.1	248.2
-		6.6	248.7
A		5.6	249.7
Ct.		5.4	249.9
A		5.3	250.0
-		5.2	250.1
W.L.		4.8	250.5
50' N ^o of			
W.L.		4.5	250.8
-		4.8	250.5
A		5.2	250.1
Ct.		5.7	249.6
A		6.3	249.0
-		6.8	248.5
E.L.		7.2	248.1
100' N ^o of			
E.L.		6.9	248.4
-		6.7	248.6
A		6.6	248.7
Ct.		6.3	249.0
A		6.0	249.3
-		5.7	249.6
W.L.		4.8	250.5

150' N ^o of		
W.L.	5.1	250.2
-	5.1	250.2
A	5.0	250.3
Ct.	5.6	249.7
A	6.3	249.0
-	6.4	248.9
East L.	6.8	249.0
175' N ^o of		
East L.	5.9	249.4
-	5.9	249.4
A	6.3	249.0
Ct.	6.2	249.1
A	5.8	249.5
-	5.6	249.7
W.L.	5.0	250.3
225' N ^o of Kalmia		
W.L.	5.4	249.9
-	6.0	249.3
A	6.2	249.1
Ct.	5.9	249.4
A	5.8	249.5
-	5.5	249.8
East L.	5.0	250.3

(300) So line of Laurel

East L.	255.25	3.5	251.8
-		3.8	251.5
4		4.6	250.7
ct.		4.7	250.6
4		5.3	250.0
-		5.8	249.5
W.L.		4.1	251.2
6.9	256.66	5.53	249.72
So Cent Line of Laurel			
W.L.		5.7	251.0
-		7.1	249.6
4		6.8	249.9
ct.		6.3	250.4
4		5.8	250.9
-		5.2	251.5
E.L.		4.5	252.2
So 1/4 line			
E.L.		4.9	251.8
-		5.3	251.4
4		6.0	250.7
ct.		6.4	250.3
4		6.6	249.9
-		7.1	249.6
W.L.		6.1	250.6

Center line of Laurel

W.L.	256.66	5.4	251.3
-		6.8	249.9
4		6.3	250.4
ct.		6.3	250.4
4		6.0	250.7
-		5.8	251.4
East L.		4.6	252.1
No 1/4 line			
East L.		4.7	252.0
-		4.8	251.9
4		4.7	252.0
ct.		6.4	250.3
4		6.7	250.0
-		6.6	250.1
W.L.		6.0	250.7
No Cent line			
W.L.		4.7	252.0
-		6.4	250.3
4		6.5	250.2
ct.		6.4	250.2
4		5.1	251.6
-		4.7	252.0
East L.		4.5	252.2

No Line of Laurel

East L.	256.66	3.8	252.9
—		4.3	252.4
4		4.7	252.0
8' East of Ct.		5.0	251.7
5' " " "		6.2	250.5
Ct.		6.4	250.3
4		6.4	250.3
—		6.4	250.3
W.L.		4.6	252.1
50' Moor			
W.L.		5.1	251.6
—		5.7	251.0
4		5.9	250.8
Ct.		6.0	250.7
5' East of Ct.		5.5	251.2
8' " " "		4.4	252.3
1/4		3.9	252.8
—		3.5	253.0
East L.		3.1	253.6

100' Moor

East L.	3.5	253.2
—	3.7	253.0
4	3.4	253.3
12' East of Ct.	3.8	252.9
7' " " "	4.8	251.9
Ct.	5.6	251.7
4	5.6	251.1
—	5.5	251.2
West L.	4.9	251.8
125' Moor		
W.L.	4.7	252.0
—	5.3	251.4
4	5.5	251.2
Ct.	5.6	251.1
4	4.7	252.0
—	4.1	252.6
East L.	4.0	252.7

150' Moat			
East L.	45	252.2	
-	50	251.7	
A	54	251.3	
ct,	54	251.3	
A	57	251.8	
-	57	251.6	
W.L.	49	251.8	
200' Moat			
W.L.	35	253.2	
-	43	252.4	
A	46	252.1	
ct,	49	251.8	
A	52	251.5	
-	52	251.5	
East L.	50	251.7	
250' Moat			
East L.	43	252.4	
-	39	252.8	
A	43	252.4	
ct	46	252.1	
A	47	252.5	
-	39	252.8	
W.L.	21	254.6	

(300) To Line of Maple			
West L.	256.66	0.0	256.7
10' East of West Line		0.1	256.6
Curb		2.7	254.0
A		3.8	252.9
ct,		4.0	252.7
A		4.1	252.6
-		3.8	252.9
East L.		3.4	253.3
	10.52	264.26	2.92 253.74
To Curb Line of Maple			
W.L.		7.2	257.1
10' East of West Line		8.2	256.1
A Curb		10.2	254.1
A		10.8	253.5
ct,		11.7	252.6
A		11.5	252.8
-		11.4	252.9
East Line		10.6	253.7

So 1/4 line of			
East L.		10.6	253.7
-	264.26	11.3	253.0
4.		11.7	252.6
ct.		11.5	252.8
4		10.5	253.8
-		9.2	255.1
W.L.		7.2	257.1
Center line of			
W.L.		6.3	258.0
-		8.6	255.7
4		10.0	254.5
ct.		11.2	253.1
4		11.4	252.8
-		11.3	253.0
East L.		10.3	254.0
N ^o 1/4 line			
East L.		10.5	253.8
-		11.2	253.1
4		11.3	253.0
ct.		10.9	253.4
4		9.6	254.7
-		8.0	256.3
W.L.		5.8	258.5

N ^o . Cont line of			
W.L.		6.3	258.0
-		7.9	256.4
4		9.5	254.8
ct.		10.5	253.8
4		11.1	253.2
-		11.1	253.2
East L.		10.2	254.1
N ^o line of Maple			
East L.		10.1	254.2
-		10.8	253.5
4		10.8	253.8
ct.		10.1	254.2
4		9.0	255.3
-		7.5	256.8
West L.		6.9	257.4
50' N ^o of Maple			
W.L.		6.1	258.2
-		6.6	257.7
4		8.3	256.0
ct.		8.8	255.5
4		10.4	254.1
-		10.4	254.1
East L.		10.6	253.7

100' Wood Maple			
East L.		10.3	254.0
-	264.26	9.1	255.2
A		8.7	255.6
Ct.		7.6	256.7
A		7.1	257.2
-		6.1	258.2
W.L.		4.9	259.4
150' W of			
W.L.		4.2	260.1
-		5.4	258.9
A		6.3	258.0
Ct.		6.9	257.4
A		7.7	256.6
-		8.0	256.3
East L.		9.2	255.1
175' W of			
East L.		9.0	255.3
-		7.4	256.9
A		6.8	257.5
Ct.		6.7	257.6
A		5.6	258.7
-		4.6	259.8
W.L.		3.7	260.6

200' W of		
W.L.	3.5	260.8
-	4.2	260.1
1/4	5.2	259.1
Ct.	5.7	258.4
1/4	6.9	257.4
-	7.7	256.6
East L.	8.5	255.8
250' W of		
East Line	8.0	256.3
-	7.3	257.0
A	6.3	258.0
Ct.	5.5	258.8
A	4.9	259.4
-	4.0	260.3
West L.	4.8	261.5
(300) N of Line of Nutmeg		
W.L.	3.0	261.3
-	4.2	260.1
1/4	5.1	259.2
Ct.	5.8	258.5
A	6.3	258.0
-	7.2	257.1
East L.	7.4	256.9

So Curt Line of Nutmeg			
East Line	264.26	7.3	257.0
-		6.9	257.4
4		6.5	257.8
ct.		5.8	258.5
4		5.0	259.3
-		4.1	260.2
West Line		1.7	262.6
So 1/4 Line			
West L.		1.0	263.3
10' East of West L.		2.7	261.6
Curb		4.5	259.8
1/4		5.0	259.3
ct.		5.6	258.7
1/4		6.5	257.8
-		7.0	257.3
East L.		7.2	257.1
Center Line of			
E.L.		7.2	257.1
-		6.7	257.6
4		6.3	258.0
ct.		5.4	258.9
1/4		5.0	259.3
ct.		4.3	260.0
10' East of West L.		2.9	261.7
West L.		1.1	263.2

1/4 Line			
West L.	264.26	1.3	263.0
5' East of West L.		2.3	262.0
-		4.5	259.8
1/4		5.3	259.0
ct.		5.6	258.7
4		6.5	257.8
-		6.6	257.7
East L.		6.5	257.8
1/4 Curt Line			
E.L.		6.3	258.0
-		6.4	257.9
1/4		6.3	258.0
ct.		5.7	258.6
1/4		5.2	259.1
-		4.5	259.8
5' East of West Line		2.7	261.6
West L.		1.9	262.4
11.32	270.11	5.47	258.79

M ^o Line at Nutmeg			
West Line	270.11	7.7	262.4
5' East of West L.		9.7	260.4
Curve		10.4	259.7
1/4		11.2	258.9
ct.		11.6	258.5
1/4		12.1	258.0
-		12.0	258.1
East Line		12.0	258.1
50' M ^o of			
East L.		10.8	259.3
-		11.6	258.5
4		11.6	258.5
ct.		11.2	258.9
4		10.5	259.6
-		9.9	260.2
5' East of West L.		9.3	260.8
West Line		8.9	261.2

100' M ^o of at Nutmeg		
West L.	8.0	262.1
-	9.0	261.1
4	9.6	260.5
ct.	10.2	259.9
4	11.0	259.1
-	10.7	259.4
East L.	9.4	260.7
150' M ^o of		
East L.	8.6	261.5
-	9.8	260.3
4	10.0	260.1
ct.	9.8	260.3
4	9.0	261.1
-	8.5	261.6
W.L.	7.4	262.7
200' M ^o of		
W.L.	7.4	262.7
-	8.0	262.1
1/4	8.4	261.7
ct.	8.8	261.3
4	9.0	261.1
-	8.4	261.7
East L.	7.9	262.2

	250' No of	Mounting	
East L.	27911	7,3	262,8
-		7,7	262,4
1/4		8,1	262,0
Ct.		7,4	262,7
1/4		7,1	263,1
-		6,9	263,2
West Line		6,5	263,6
(300) So Line of Olive			
W.L.		4,1	266,0
-		4,5	265,6
1/4		5,1	265,0
Ct.		5,6	264,5
1/4		6,2	263,9
-		6,6	263,5
East L.		6,6	263,5
So East Line of Olive			
East Line		6,2	263,9
-		6,0	264,1
+		5,8	264,3
Ct.		5,1	265,2
+		4,6	265,5
-		4,3	265,8
W.L.		3,6	266,5

	So 1/4 Line of	
W.L.		3,7
-		3,6
+		3,9
Ct.		4,6
+		5,4
-		5,9
East L.		6,1
Center Line of		
East L.		5,7
-		5,4
+		5,1
Ct.		3,9
+		3,5
Ct.		3,3
W.L.		3,1
N. 1/4 Line		
W.L.		3,1
-		3,4
1/4		3,5
Ct.		4,2
+		4,7
-		5,4
East L.		5,5

11° Curt line of Olive

East L.	270.11	4.9	265.2
—		5.0	265.1
1/4		4.6	265.5
Ct.		3.7	266.4
1/4		3.3	266.8
—		3.2	266.9
West L.		2.6	267.5
11° line of Olive			
W.L.		2.2	267.9
—		3.0	267.1
4		2.5	267.6
Ct.		3.5	266.6
4		4.1	266.0
—		4.5	265.6
East L.		4.4	265.7
25° 11° of			
East L.		3.5	266.6
—		3.8	266.3
4		3.3	266.8
Ct.		3.9	267.1
4		4.4	267.7
—		4.0	268.1
W.L.		1.6	268.5
9.75	278.07	1.79	268.32

50° 11° of Olive

West L.	278.07	9.1	269.0
—		9.4	268.7
4		9.6	268.5
Ct.		9.9	268.2
4		10.1	268.0
—		10.6	267.5
East L.		10.7	267.4
100° 11° of			
East L.		9.4	268.7
—		9.3	268.8
4		8.8	269.3
Ct.		8.1	270.0
4		8.8	269.3
—		8.5	269.6
W.L.		8.3	269.8
150° 11° of			
W.L.		7.3	270.8
—		8.1	270.0
4		8.0	270.1
Ct.		7.2	270.9
4		7.8	270.3
—		8.4	269.7
East Line		8.2	269.9

200' Wood Olive

East L.	278.07	7.8	270.3
-		7.1	271.0
4		6.9	271.2
ct.		7.3	270.8
4		7.6	270.5
-		7.4	270.7
W.L.		6.4	271.7

200' Wood

W.L.		5.3	272.8
-		6.5	271.6
4		6.7	271.4
ct.		6.5	271.6
W.L.		6.4	271.7
-		6.4	271.7
East L.		6.7	271.4

300' As Line at Palm

East L.		5.3	272.8
-		4.6	273.5
4		4.4	273.7
ct.		4.2	273.9
4		4.1	274.0
-		4.1	274.0
West L.		5.8	274.5

So Curt Line of Palm

West L.	3.6	274.5
-	4.2	273.9
4	3.8	274.3
ct.	3.6	274.5
4	4.0	274.1
-	4.5	273.6
East L.	5.2	272.9

So 44 Line

East L.	5.1	273.0
-	4.4	273.7
4	3.8	274.3
ct.	3.1	275.0
4	3.4	274.7
-	3.9	274.2
W.L.	3.5	274.6

Center Line

W.L.	3.2	274.9
-	3.4	274.7
4	3.3	274.8
ct.	3.3	274.8
4	3.3	274.8
-	3.6	274.5
East L.	4.6	273.5

No 14 Line of

East L	278.07	4.3	273.8
-		3.3	274.8
A		3.0	275.1
Ch.		2.5	275.6
A		3.0	275.1
-		3.1	275.5
West L.		3.4	274.7

No Carb Line

West L.		2.6	275.5
-		3.5	274.6
A		2.7	275.4
Ch.		2.4	275.7
A		2.8	275.3
-		3.2	274.9
East L.		4.1	274.0

No Line at Palm

East L.		4.1	274.0
-		3.0	275.1
A		2.5	275.6
Ch.		2.1	276.0
A		2.5	275.6
-		2.3	275.8
W.L.		2.6	275.5
7.07	283.27	1.87	276.20

West 50' West Palm

West 50' West Palm	283.27	7.3	276.0
East L.		7.1	276.2
-		6.8	276.5
Ch.		6.8	276.5
A		7.1	276.2
-		7.6	275.7
East L.		9.0	274.3

100' West

East L.		8.0	275.5
-		7.1	276.2
A		6.5	276.8
Ch.		6.0	277.3
A		6.3	277.0
-		6.5	276.8
West L.		6.8	276.5

150' West

West L.		6.2	277.1
-		6.0	277.3
A		5.7	277.6
Ch.		5.3	278.0
A		5.7	277.6
-		6.1	276.6
East L.		7.0	276.3

200' N^o of Palm

East L.	283.7	6.0	277.3
—		5.3	278.0
1/4		4.7	278.6
Ct.		4.6	278.7
1/4		4.9	278.4
—		5.3	278.0
West Line		5.2	278.1

250' N^o of

West L.		4.5	278.8
—		4.4	278.9
1/4		4.3	279.0
Center		3.9	279.4
1/4		4.0	279.3
—		4.3	279.0
East L.		4.3	279.0

(300) N^o Line of Quince

E.L.		2.9	280.4
—		3.3	280.0
4		3.1	280.2
Ct.		3.1	280.2
4		3.5	279.8
—		3.8	279.5
W.L.		4.0	279.3

So Curb Line of Quince

West L.		3.9	279.4
—		3.7	279.6
4		3.4	279.9
Ct.		3.0	280.3
4		2.9	280.1
—		3.2	280.5
East L.		2.6	280.7

N^o 1/4 Line

East L.		2.5	280.8
—		3.0	280.3
1/4		2.7	280.6
Ct.		2.8	280.5
4		3.2	280.1
—		3.2	280.1
West		3.1	280.2

Center Line

West L.		2.0	280.3
—		3.2	280.1
4		3.2	280.1
Ct.		2.2	281.1
4		2.5	280.8
—		2.8	280.5
East L.		2.4	281.1

77° 1/4 line of June

East L	283.27	2.3	281.0
-		2.7	280.6
A		2.7	281.1
Ct.		2.1	281.2
A		3.0	280.3
-		3.1	280.2
West L		3.2	280.1

77° Curb Line

West L		3.5	279.8
-		3.0	280.3
A		2.5	280.7
Ct		2.2	281.1
A		2.3	281.1
-		2.7	280.6
East L		2.3	281.0

77° Line of June

East L		1.9	281.4
-		2.5	280.8
A		2.2	281.1
Ct.		2.3	281.0
A		2.4	280.9
-		2.9	280.4
W.L.		2.6	280.7

	283.27		
		2.32	280.95
13.74	282.14		269.40
6.20	287.23	1.17	280.97

50° 77° of June

West L		6.1	281.1
-		6.7	281.0
A		6.1	281.1
Ct.		5.8	281.4
A		5.7	281.5
-		5.9	281.3
E.L.		5.2	281.8

100° 77° of June

East L		5.1	282.1
-		5.6	281.6
A		5.3	282.0
Ct.		5.6	281.6
A		5.8	281.4
-		5.7	281.5
West L		5.6	281.6

Street on West Side of
City Park from Juniper north

20

150' W of Juniper

West L.	287.23	52	282.0
—		51	282.1
A		57	281.8
Ch.		53	281.9
A		50	282.2
—		52	282.0
East L.		49	282.3

200' W of

East L.		44	282.8
—		48	282.4
A		48	282.4
Ch.		47	282.5
A		49	282.3
—		44	282.8
West L.		46	282.2

250' W of

West L.		40	283.2
—		42	283.0
A		44	282.8
Ch.		47	283.0
A		46	282.6
—		45	282.7
East L.		42	283.0

(300) So Line Redwood

E L.	287.23	38	283.4
—		39	283.3
A		40	283.4
Ch.		38	283.4
A		38	283.4
—		37	283.5
West L.		37	283.5

BM. 5.10 289.80 2.53 284.70

So Curb Line of Redwood

West Line		6.1	283.7
—		6.1	283.7
A		6.2	283.6
Ch.		6.1	283.7
A		6.4	283.4
—		6.4	283.4
E.L.		6.2	283.6

West Park Boulevard
 5/9/15
 Hutchinson
 Evans
 Surver

So 1/4 Line of Red			
Exit 2.	28980	6.1	283.7
-		6.2	283.4
4		6.3	283.5
Ch		5.8	284.0
4		5.8	284.0
-		6.1	283.7
W.L.		5.9	283.9
Center Line of			
W.L.		6.2	283.6
-		6.0	283.8
4		5.8	284.0
Ch		5.5	284.3
4		6.1	283.7
-		6.2	283.6
E.L.		6.0	283.8
N ^o 1/4 Line			
E.L.		5.9	283.9
-		6.1	283.7
4		6.1	283.7
Ch		5.5	284.3
4		5.7	284.1
-		5.7	284.1
W.L.		6.1	283.7

N ^o Curve Line		
W.L.	5.7	284.1
-	5.6	284.2
4	5.7	284.1
Ch	5.6	284.2
4	6.0	283.8
-	5.8	284.0
E.L.	5.6	284.2
N ^o Line of Redwood		
E.L.	5.5	284.3
-	5.6	284.2
4	5.8	284.0
Ch	5.6	284.2
4	5.5	284.3
-	5.5	284.3
W.L.	5.5	284.3
50' N ^o of		
W.L.	5.1	284.7
-	5.0	284.8
4	5.1	284.7
Ch	4.8	285.0
4	5.2	284.6
-	5.2	284.6
E.L.	4.9	284.9

100' 11 ⁰ of			
East L.	43	285.5	
-	47	285.1	
4	47	285.1	
Ct.	46	285.2	
4	46	285.2	
-	47	285.1	
W.L.	49	284.9	
150' 11 ⁰ of			
W.L.	45	285.3	
-	40	285.8	
4	44	285.4	
Ct.	42	285.6	
4	42	285.6	
-	41	285.7	
East L.	38	286.0	
200' 11 ⁰ of			
East L.	31	286.7	
-	38	286.0	
4	36	286.2	
Ct.	35	286.0	
4	40	285.8	
-	40	285.8	
W.L.	44	285.4	

250' 11 ⁰ of			
W.L.	289.80	3.9	285.8
-		3.8	286.0
4		3.6	286.2
Ct.		3.4	286.4
4		3.2	286.6
-		3.4	286.4
East L.		2.9	286.9
(300) So Line of Spruce			
E.L.		2.7	287.1
-		2.9	286.9
4		2.9	286.9
Ct.		3.1	286.7
4		3.4	286.4
-		3.3	286.5
W.L.		3.5	286.3

Bm. 614 292.35 3.59 286.21

Stations on at S.W. Cor Spruce + Park Line

So. Curt Line of Spruce			
W.L.	29230	6.1	286.3
-		6.0	286.4
A		5.7	286.5
Ct.		5.5	286.9
A		5.3	287.1
-		5.4	287.0
East L.		5.2	287.2
So 1/4 Line			
East L.		5.0	287.4
-		5.4	287.0
A		5.2	287.2
Ct.		5.4	287.0
A		5.6	286.8
-		6.0	286.4
W.L.		6.1	286.3
Center Line			
W.L.		6.0	286.4
-		5.7	286.5
A		5.6	286.8
Ct.		5.4	287.0
A		5.3	287.1
-		5.2	287.2
East L.		5.1	287.3

N ^o 1/4 Line		
East L.	5.1	287.3
-	5.2	287.2
A	5.3	287.1
Ct.	5.3	287.1
A	5.4	287.0
-	5.7	286.5
W.L.	5.8	286.6
N ^o Curt Line		
W.L.	5.7	286.5
-	5.8	286.6
A	5.0	287.4
Ct.	5.1	287.3
A	5.2	287.2
-	5.2	287.2
East L.	5.0	287.4
N ^o Line of Spruce		
East L.	5.0	287.4
-	5.2	287.2
A	5.1	287.3
Ct.	5.2	287.2
A	5.3	287.1
-	5.7	286.7
W.L.	6.0	286.4

50' N^o of Spruce

West L.	292.35	58	286.6
-		53	287.1
+		52	287.2
Cl.		49	287.5
+		48	287.6
-		50	287.3
East L.		50	287.4

100' N^o of

E.L.		49	287.5
-		46	287.8
+		44	288.0
Cl.		47	287.7
+		51	287.3
-		47	287.7
W.L.		55	286.9

150' N^o of

W.L.		50	287.4
-		51	287.3
+		49	287.5
Cl.		46	287.8
+		45	287.9
-		47	287.7
East Pin		48	287.6

300' N^o of

West L.	44	288.0
-	46	287.8
+	45	287.9
Cl.	44	288.0
+	46	287.8
-	50	287.4
W. Line	50	287.4

250' N^o of

West L.	49	287.5
-	48	287.6
+	46	287.8
Cl.	44	288.0
+	45	287.9
-	45	287.9
East Line	44	288.0

No Line at Thorne

E.L.	39	288.5
-	44	288.0
+	40	288.4
Cl.	42	288.2
+	40	288.4
-	48	287.6
W.L.	48	287.6

		292.85		
	v.66	293.94	207	289.28
	So Curb line of Thomas			
W.L.			64	287.5
-			61	287.8
+			57	288.0
Ch.			57	288.2
+			56	288.3
-			57	288.0
E.L.			54	288.5
	So 1/4 line			
E.L.			56	288.3
-			58	288.1
+			57	288.2
Ch.			55	288.4
+			57	288.2
-			61	287.8
W.L.			60	287.9
	Ch			

Center Lines of

W.L.		60	287.9
-		61	287.8
+		56	288.3
Ch.		54	288.5
+		52	288.7
-		58	288.1
E.L.		57	288.2
	M ^o 1/4 line		
E.L.		55	288.4
-		58	288.1
+		56	288.3
Ch.		54	288.5
+		58	288.1
-		59	288.0
W.L.		62	287.7
	M ^o Curb line		
W.L.		59	288.0
-		56	288.3
+		56	288.3
Ch.		56	288.3
+		57	288.2
-		57	288.2
E.L.		56	288.3

11° Line of Therm.			
East L.	293.94	5.8	288.1
-		5.6	288.3
A		5.6	288.3
Ch.		5.4	288.5
A		5.5	288.4
-		5.6	288.3
W.L.		6.0	287.9
50' Mott			
West L.		5.8	288.1
-		5.5	288.4
A		5.2	288.7
Ch.		5.4	288.5
A		5.5	288.4
-		4.8	289.1
East L.		5.2	288.7
100' Mott			
E.L.		5.5	288.4
-		5.0	288.9
A		4.7	289.2
Ch.		5.3	288.6
A		5.4	288.5
-		5.3	288.6
West L.		5.3	288.6

150' Mott		
West L.	5.4	288.5
-	5.0	288.9
A	5.0	288.9
Ch.	4.9	289.0
A	4.6	289.3
-	4.7	289.2
East L.	5.5	288.4
200' Mott		
East L.	5.5	288.4
-	4.7	289.2
A	4.4	289.5
Ch.	4.7	289.2
A	4.8	289.1
-	4.7	289.2
West L.	5.2	288.7
250' Mott		
W.L.	4.8	289.1
-	4.8	289.1
A	4.6	289.3
Ch.	4.4	289.5
A	4.3	289.6
-	4.6	289.3
East L.	5.6	288.2

(300) So Line of Ngora

East S.	293.94	45	289.4
-		48	289.1
A		48	289.1
ct.		45	289.4
A		48	289.1
-		47	289.2
West S.		46	289.3
So Curt Line of Ngora			
W.L.		49	289.0
-		50	288.9
A		52	288.7
ct.		48	289.1
A		45	289.4
-		43	289.6
E.L.		41	289.8
So 1/4 Line of Ngora			
E.L.		40	289.8
-		42	289.7
A		43	289.6
ct.		44	289.5
A		45	289.4
-		50	288.9
W.L.		53	288.6
4.43	293.78	4.59	289.35

Center Line of Ngora

West S.	293.78	49	288.9
-		46	289.2
A		44	289.4
ct.		40	289.8
A		38	290.0
-		36	290.2
East S.		35	290.3
No 1/4 Line			
E.L.		35	290.3
-		37	290.1
A		39	289.9
ct.		41	289.7
A		44	289.4
-		48	289.0
W.L.		51	288.7
No Curt Line			
W.L.		53	288.5
-		51	288.7
A		51	288.7
ct.		49	288.9
A		45	289.3
-		44	289.4
W.L.		42	289.4

West Park Boulevard 5/9/05

100 wide
20' walked.

28538

28

770' Line of Trees

East Line	293.78	3.8	290.0
-		4.1	289.7
4		4.2	289.6
ct.		4.4	289.4
4		4.8	289.0
-		5.2	288.6
West L		4.7	289.1
42' n. of trees (North line of Park)			
West L		5.3	288.5
-		6.1	287.7
4		5.4	288.4
ct.		5.5	288.3
4		5.1	288.7
-		4.7	289.1
East L		4.1	289.7
1.5	289.19	6.24	287.54
		3.80	285.39

1st & Hawthorn 165.62 S.E. Cor.
2 + Slope 170.52 N.E. Cor. slope in show

$$\begin{array}{r} 165.62 \\ 2.42 \\ \hline 166.04 \text{ H.I.} \\ 12.56 \\ \hline 153.48 \\ 165.62 \\ 0.22 \\ \hline 115.84 \\ 12.22 \\ \hline 153.62 \\ 1.28 \\ \hline 154.90 \text{ H.I.} \end{array}$$

$$\begin{array}{r} 10.2 \\ 164.52 \\ \hline 3.50 \\ 162.50 \end{array}$$

$$\begin{array}{r} 3.85 \\ 151.05 \\ \hline 280 \\ 10 \end{array}$$

$$\begin{array}{r} 948 \\ 145.42 \\ \hline 143.43 \end{array} \quad \begin{array}{r} 1147 \\ 143.43 \\ \hline 142.70 \end{array} \quad \begin{array}{r} 12 \\ 1230 \\ \hline 12.20 \end{array}$$

$$\begin{array}{r} 1285 \\ 144.05 \end{array}$$

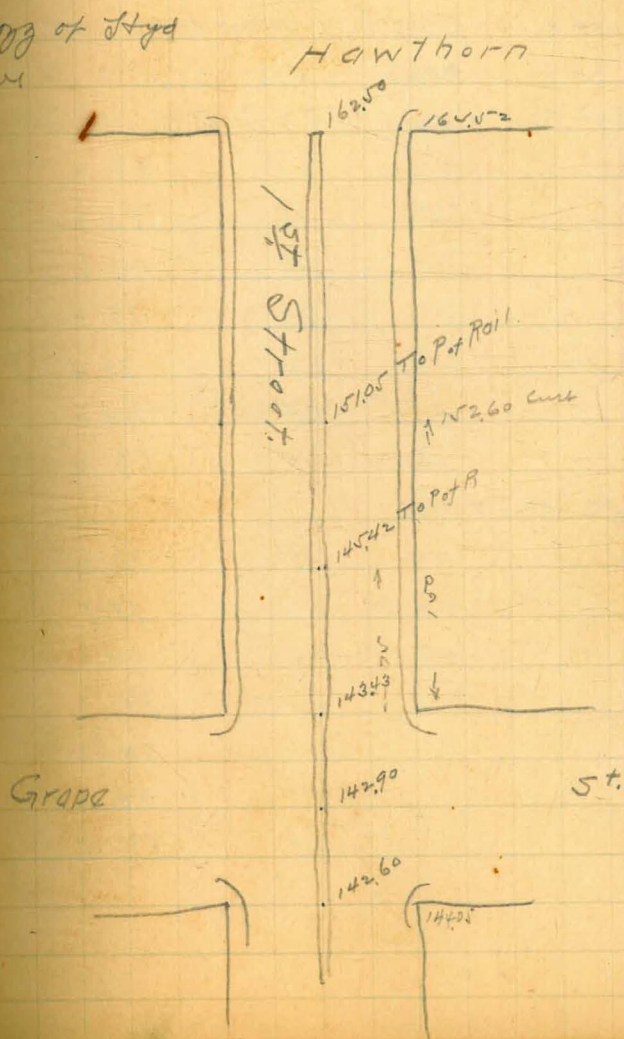
4.37

$$\begin{array}{r} 152.75 \\ 44 \\ \hline 87.5 \\ 4.37 \end{array} \quad \begin{array}{r} 4837 \\ 1.00 \\ \hline 146.87 \end{array}$$

H.I.

$$\begin{array}{r} 64.5 \\ 40 \\ \hline 10.5 \\ 10.25 \end{array}$$

Moz of Hyd
pan.



South Park Boulevard
 on S. side of City Park from
 10th to 25th Streets

Note 80' Street

1/4' Side walks

λ	042	9029	89.87
	2.64	8040	77.76
West Line of Park. (132' West of 11 th Street)			
So L.		6.8	73.6
-		6.8	73.6
1/4		6.8	73.6
Cl.		7.0	73.4
1/4		7.0	73.4
cut		6.4	74.0
N ^o L.		6.8	73.9
100' West of 11 th			
So L.		6.7	73.7
-		6.7	73.7
1/4		6.8	74.1
Cl.		6.8	74.1
1/4		6.1	74.3
-		5.9	74.5
N ^o L.		5.9	74.5

5/12/05
 Hutchinson
 Evans
 Serivan

30

50' West of 11th

So L.	5.4	75.6
-	5.5	74.9
1/4	5.3	75.1
Cl.	5.3	75.1
1/4	4.8	75.6
-	4.4	76.0
1/4	4.2	76.2
25' West of 11 th		
So L.	3.2	77.2
-	5.1	75.3
1/4	5.0	75.4
Cl.	4.9	75.5
1/4	4.4	76.0
-	3.8	76.6
N ^o L.	3.8	76.6

West line of 11th 80.40

So. line	0.0	80.4
-	2.0	78.4
1/4	2.6	77.8
Ct.	2.6	77.8
1/4	3.2	77.2
-	3.7	77.2
N. line	3.2	77.2

12.23 89.99 2.64 77.76 ~

West Curt Line of 11th

So. L.	7.4	82.6
-	8.6	81.4
1/4	9.3	80.7
Ct.	9.1	80.9
1/4	9.9	80.1
-	10.2	79.8
N. L.	10.4	79.6

West 1/4 line

N. L.	89.99	9.2	80.8
-		9.4	80.6
4		9.6	80.4
Ct.		9.4	80.6
1/4		8.4	81.6
-		7.7	82.3
So. L.		7.1	82.9

Center line of 11th

So. L.	6.0	84.0
-	6.7	83.3
4	7.7	82.3
Ct.	7.8	82.0
4	7.0	83.0
-	6.6	83.4
N. L.	7.4	82.6

East 1/4 line

N. L.	6.7	83.3
-	5.8	84.2
4	5.2	84.8
Ct.	5.4	84.6
4	5.3	84.7
-	5.3	84.7
So. L.	5.5	84.5

East Curt Line of

No. S	89.99	50	85.0
-		4.5	85.5
4		3.9	86.1
ct		3.6	83.4
4		3.4	86.6
-		3.5	86.5
No. L		4.2	85.8

East Line of 11th

No. L		2.5	87.5
-		2.1	87.9
4		1.4	88.6
ct		1.7	88.3
4		2.4	87.6
-		2.5	87.5
No. L		3.1	86.9

11.93 101.54 0.78 89.71
25' East of 11th

No. L		11.1	90.5
-		11.3	90.3
4		10.4	91.2
ct		9.8	91.8
4		9.1	92.5
-		9.2	92.4
No. L		10.6	91.0

50' East of

No. L	101.54	6.5	95.1
-		6.4	95.2
4		5.7	95.9
ct		6.5	95.1
4		7.7	94.4
-		7.9	93.7
No. L		8.6	93.0

75' East of

No. L		6.4	95.2
-		5.7	95.9
4		3.8	97.8
ct		3.3	98.3
4		2.9	98.7
-		2.4	99.2
No. L		2.9	98.7

100' East

No. L		0.5	101.1
-		0.5	101.1
4		1.0	100.6
ct		1.7	99.9
4		2.2	99.4
-		3.0	98.6
No. L		2.3	99.3

	12.87	114.81	0.40	101.14
	101.64			
	125' East of 112 1/2			
No L,			11.6	102.5
-			12.7	101.4
+			12.6	101.5
Cl.			12.1	102.0
+			10.4	103.7
-			10.5	103.6
No L,			10.8	103.3
	100' East of			
No L,			10.1	104.0
-			9.4	104.7
+			9.6	104.5
Cl.			9.9	104.2
+			9.9	104.2
-			10.9	104.1
No L,			9.6	104.5

	175' East of	
No L,	6.6	107.5
-	7.4	106.7
+	7.2	106.9
Cl.	6.9	107.2
+	6.1	108.0
-	6.3	107.8
No L,	7.6	106.5
	(200) West line 12 1/2	
No L,	4.0	110.1
-	2.5	111.6
+	2.4	111.7
Cl.	2.4	111.7
+	3.5	110.6
-	4.8	109.3
No L,	4.2	109.9
	West Cent line	
No L,	4.0	110.1
-	3.6	110.5
+	2.3	111.8
Cl.	1.5	112.6
+	1.1	113.0
-	1.0	113.1
No L one	1.9	112.2

West 1/4 line of 12th

North L.	114.1	0.5	113.6
-		0.0	114.1
1/4		0.0	114.1
ct.		0.4	113.7
4		1.3	112.8
-		2.4	111.7
So L.		3.0	111.1
12.44	12432	2.23	111.78
Center line of 12 th			
So L.		12.7	112.1
-		11.6	112.7
2		10.6	113.7
ct.		9.9	114.4
4		9.5	114.8
-		9.5	114.8
No L.		8.8	115.5
East 1/4 line			
No L.		7.7	116.6
ct.		8.4	115.9
4		8.5	115.8
ct.		8.9	115.4
4		9.7	114.6
-		10.7	113.6
So L.		12.0	112.3

East Curt line

No L.	12432	10.4	113.9
-		10.2	114.1
+		8.8	115.5
ct.		7.9	116.4
4		7.6	116.7
-		8.1	116.2
13' No of No L.		7.2	117.1
No line		6.7	117.6
East line of 12 th			
No L.		5.6	118.7
11' So of No L.		6.3	118.1
Curt.		7.4	116.9
1/4		6.8	117.5
ct.		7.1	117.2
4		8.0	116.3
1/4 of No Curt		9.8	115.5
Curt		7.6	116.7
So L.		7.6	116.7

25' East of 12 th			
M ^o L ^{ine}	1248.2	84	120.9
11' East of M ^o L ^{ine}		4.0	120.3
Curb		3.8	118.5
1/4		5.1	119.2
Ct.		5.4	118.9
1/4		5.9	118.4
2' M ^o of the Curb		6.8	117.5
Curb		5.7	118.4
to Line		6.0	118.3
50' East of			
M ^o L ^{ine}		0.7	123.6
11' East of M ^o L ^{ine}		1.0	122.8
Curb		4.0	120.3
1/4		3.4	120.9
Ct.		3.6	120.7
1/4		4.4	119.9
7' 4" of the Curb		5.2	119.1
Curb		4.4	119.9
to Line		4.0	120.3
	12.69	135.29	177.60

100' East of			
M ^o L ^{ine}	135.29	9.3	126.0
11' East of M ^o L ^{ine}		9.9	125.4
Curb		11.8	123.5
1/4		11.4	123.9
Ct.		11.5	123.8
1/4		12.4	122.9
2' M ^o of the Curb		13.4	121.9
Ct.		13.0	122.3
to Line		13.0	122.3
150' East of			
to L ^{ine}		10.3	125.0
Curb		10.2	125.1
1/4		9.5	125.8
Ct.		8.6	126.7
1/4		8.0	127.3
—		8.5	126.8
10' East of M ^o L ^{ine}		7.1	128.2
M ^o L ^{ine}		6.6	128.7

West line of 13th

(200)

N ^o 8.	135.29	3.7	131.6
-		4.6	130.7
A		4.7	130.6
Ch.		5.7	129.6
A		6.5	128.8
-		6.7	128.6
No Line		7.3	128.0

West Curve Line of 13th

No L.		7.8	127.5
-		6.1	129.2
A		5.3	130.0
Ch		4.6	130.7
14		3.9	131.4
-		3.3	132.0
N ^o 8.		3.3	132.0

West 1/4 Line

N ^o 8.		1.8	133.5
-		2.5	132.8
A		3.0	132.3
Ch.		3.7	131.6
A		4.5	130.8
-		5.8	129.5
No L.		7.2	128.1

Center Line of 13th

No L.	135.29	6.5	128.8
-		5.3	130.0
A		3.9	131.4
Ch.		2.9	132.4
A		2.7	133.1
-		1.6	133.7
N ^o 8.		0.9	134.3

East 1/4 Line

N ^o 8.		0.6	134.7
-		1.2	134.1
A		2.0	133.3
Ch.		2.6	132.7
A		3.7	131.6
-		4.8	130.5
No L.		5.8	129.5

East Curve Line

No L.		5.6	129.7
-		4.6	130.7
A		3.6	131.7
Ch		2.8	132.5
A		1.6	133.5
-		1.1	134.2
N ^o 8.		0.5	134.8

	135.29		
8.66	143.78	0.17	135.42
East line of 13 th			
N ^o L.		75	136.3
11' South of N ^o L.		8.1	135.7
Ct.		8.9	134.9
1/4		8.9	134.9
Ct.		9.6	134.2
1/4		10.7	133.1
1' N ^o of Ct.		12.3	131.5
Curt.		11.6	132.2
No line		11.2	132.6
50' East of			
No L.		8.8	135.0
Ct.		8.5	135.3
1' N ^o of Ct.		9.2	134.6
1/4		7.4	136.4
Ct.		6.7	137.6
1/4		5.9	137.9
-		6.1	137.7
11' N ^o of N ^o L.		4.9	138.9
N ^o L.		4.4	139.4

100' East of			
N ^o L.	143.78	2.0	141.8
11' South of N ^o L.		2.2	141.6
Ct.		3.3	140.5
1/4		2.0	141.8
Ct.		3.3	140.5
1/4		4.7	139.6
1' N ^o of Ct.		5.8	139.0
Curt.		5.4	138.4
No L.		5.5	138.3
8.80	150.06		
	144.76	2.52	141.26
150' East of			
No L.		8.1	142.0
Ct.		8.0	142.1
1' N ^o of Ct.		8.6	141.5
1/4		7.3	142.8
Ct.		6.5	143.6
1/4		6.1	144.0
-		6.7	143.4
11' South of N ^o L.		5.6	144.5
N ^o L.		5.1	145.0

(200) West Line of 14th

M ^o L	149.96 150.06	2.8	147.3
11' Foot M ^o L		3.1	147.0
Ct.		3.8	146.3
1/4		3.1	147.0
Ct.		3.5	146.6
1/4		4.4	145.7
Curve		5.1	145.1
No L.		5.5	144.6
West Curve Line	X/K	10' East of West L.	
No L.		4.7	145.4
-		4.3	145.8
1/4		3.9	146.2
Ct.		2.8	147.3
1/4		2.5	147.6
-		3.2	146.9
10' Foot M ^o L		2.6	147.5
M ^o L		2.0	148.1

West 1/4 Line of 14th (20' East of West Line)

M ^o L	1.9	148.2
10' Foot M ^o L	2.3	147.8
Ct.	2.8	147.3
+	2.3	147.8
Ct.	2.4	147.7
+	3.1	147.0
Ct.	3.7	146.4
No L.	4.5	145.6
Center Line	(30' East of West Line)	^{20' West of 14th St.}
No L.	4.1	146.0
-	3.5	146.6
1/4	2.7	147.4
Ct.	2.1	148.0
1/4	1.9	148.2
Ct.	2.3	147.8
10' Foot M ^o L	1.5	148.6
M ^o L	1.2	148.9

(450' West of 15th)

Center Line of 14th (30' East of West Line)

7 th Line	150.06	1.2	148.9
10' East 7 th L.		1.5	148.6
Cb		2.3	147.8
1/4		1.9	148.2
Ch.		2.1	148.0
1/4		2.7	147.4
3' 11 th of Cb		3.5	146.6
Curt		2.1	148.0
No Line		2.8	147.3
	12.36	148.20	155.84
	6.51	153.18	146.67

(40' East of West Line of 14th) (450' West of 15th)

No L.		5.7	147.5
—		5.0	148.2
1/4		5.5	147.7
Ch.		5.0	148.2
1/4		4.7	148.5
—		5.1	148.1
M.L.		4.3	148.9

50' East of West Line 14th (430' West of 15th)

7 th Line	153.18	4.0	149.2
Curt		4.2	149.0
1/4		4.6	148.6
Ch.		4.5	148.7
1/4		4.9	148.3
Cb		4.6	148.6
No L.		5.3	147.9
(60' East of West Line 14 th) (420' West of 15 th)			
No L.		4.5	148.7
—		4.7	148.5
1/4		4.6	148.6
Ch.		4.2	149.0
1/4		4.3	148.9
—		4.0	148.2
7 th Line		3.9	149.3
400' West of 15 th		3.9	
7 th L.		3.9	149.3
—		3.6	149.6
1/4		4.3	148.9
Ch.		3.6	149.6
1/4		4.2	149.0
—		4.4	148.8
No L.		4.6	148.6

375' West of Nth

So L	153.18	4.8	148.4
-		5.2	148.0
1/4		4.6	148.6
ct.		4.5	148.6
+		5.0	148.2
-		4.6	148.6
M ^o L		4.8	148.4

350' West of 15th

M ^o L		6.4	146.8
-		6.2	147.0
+		6.7	146.5
ct.		6.4	146.7
+		6.6	146.6
-		7.0	146.2
So L		7.0	146.2

325' West of

So L		7.8	145.4
-		7.9	145.3
+		8.1	145.1
ct.		8.6	144.6
+		8.9	144.3
-		9.6	143.6
M ^o L		10.0	143.2

300' West of 15th

So L	153.18	11.1	142.1
ct.		11.8	141.4
-	1.29	141.48	12.99
1/4		2.2	139.8
ct.		2.5	139.0
1/4		3.0	138.5
-		3.8	137.7
M ^o L		3.5	137.9

275' West of

M ^o L		8.0	133.5
-		8.5	133.0
1/4		8.7	133.3
ct.		7.5	134.0
1/4		6.9	134.6
-		6.7	134.8
So L		6.9	134.6

250' West of

So L		12.2	129.3
-		12.8	128.7
1/4		13.1	128.4
-	0.45	129.49	12.44
ct.		2.0	127.5
+		2.6	126.9
-		1.7	127.8
M ^o L		1.9	127.6

225' West of

No. 2.	129.49	8.5	121.0
-		8.4	121.1
1/4		7.5	122.0
ct.		8.0	120.5
1/4		7.6	121.9
-		6.9	122.6
Soil		6.4	123.1

200' West of

No. 2.		10.1	119.4
-		11.2	118.3
1/4		12.4	117.1
ct.		11.7	117.8
1/4		11.4	118.1
-		11.7	117.6
No. 2 line		11.5	118.0

0.78 118.12 12.15 117.34

175' West of

No. 2		4.0	114.1
-		4.2	113.9
4		4.4	113.7
ct.		4.3	113.8
4		4.4	113.9
-		4.1	114.1
Soil		4.4	113.7

150' West of 15th

Soil	118.12	7.4	110.7
-		7.8	110.3
4		7.7	110.4
ct.		7.5	110.6
4		8.0	110.1
-		8.4	109.7
No. 2.		8.3	109.8

125' West of

No. 2.		11.0	107.1
-		12.0	105.1
4		11.8	106.3
ct.		11.3	106.8
4		11.3	106.8
-		11.2	106.9
As line		10.4	107.7

0.16 105.86 12.42 105.70

100' West of 15th

As line		1.9	104.0
-		2.8	103.1
4		2.8	103.1
ct.		2.8	103.1
4		2.4	103.5
-		2.3	103.6
No. 2 line		1.7	104.2

75' West of

M ^o L ^{ms}	105.86	5.2	100.7
-		5.1	100.8
4		6.7	99.2
Cl.		6.5	99.4
4		6.2	99.7
-		5.7	100.2
So L.		5.7	100.2

50' West of

So L.		9.7	96.2
-		11.0	94.9
4		11.7	94.2
Cl.		11.1	94.8
4		9.8	96.1
-		8.9	97.0
M ^o L ^{ms}		8.3	97.6

25' West of

M ^o L ^{ms}		9.4	96.5
-		10.4	95.5
4		12.1	93.8
Cl.		11.5	94.4
4		11.4	94.5
-		12.1	93.8
So L ^{ms}		15.0	90.9

West line of 15th

So L.		13.6	93.3
-		11.8	94.1
4		10.6	95.3
Cl.		9.4	96.5
4		9.0	96.9
-		8.9	97.0
M ^o L ^{ms}		8.6	97.3

West Curve line

M ^o L ^{ms}		6.3	100.6
-		6.0	99.9
4		7.0	98.9
Cl.		8.3	97.6
4		9.2	96.7
-		10.3	95.6
So L.		11.7	94.2

West 14 line

So L.		10.9	95.0
-		9.5	96.4
4		8.6	97.3
Cl.		7.6	98.3
4		6.5	99.4
-		5.7	100.2
M ^o L ^{ms}		4.5	101.4

Center Line of 15 th			
No L	105.86	4.0	101.9
-		5.0	101.9
44		6.1	99.8
Ch		7.1	98.8
114		8.1	97.8
-		9.1	96.8
No L		10.2	95.7
East 1/4 Line			
No L		9.5	96.4
-		8.1	97.8
4		7.1	98.8
Ch		5.8	100.1
4		4.8	101.1
-		4.2	101.7
No L		3.2	102.7
East Curb Line			
No L		1.6	104.3
-		2.5	103.4
4		3.6	102.3
Ch		5.2	101.7
4		6.4	99.5
-		7.6	98.3
No L		8.9	97.0

East Line of 15 th			
No L	105.86	7.7	98.2
-		6.9	99.0
4		5.7	100.2
Ch		4.3	101.6
4		3.1	102.8
-		1.9	104.0
No L		0.6	105.3
25' East of 25 th			
No L		5.6	100.3
-		4.3	101.6
4		2.9	103.0
Ch		1.4	104.5
114		0.1	105.8
12.00	117.20	0.66	105.20
Curt		9.8	107.4
No L		8.2	109.0
50' East of			
No L		3.6	113.6
-		4.7	112.5
4		6.6	110.6
Ch		8.6	108.6
4		10.3	106.9
-		12.6	104.6
No L		14.1	103.1

75' East of 15th

SoL	117.20	107	106.5
-		8.2	109.0
4		6.1	111.1
Ct.		4.2	113.0
4		2.8	113.4
-		1.1	116.1
M ^o L		4.5	117.7

100' East of

SoL		7.8	109.4
-		5.7	111.5
4		3.8	113.4
Ct.		2.3	114.9
4		1.2	116.0

12.62 128.72

	110	116.10
Cont	10.3	118.4
M ^o L	7.5	121.2

125' East of

M ^o L		4.5	124.2
-		6.4	122.3
4		8.9	119.8
Ct.		11.0	118.7
4		12.6	116.1
-		14.2	114.5
As Lm		15.0	113.7

150' East of

AsL	128.72	9.9	118.8
-		8.9	119.8
4		8.1	120.6
Ct.		7.3	121.4
4		5.6	123.1
-		4.7	124.5
M ^o L		2.6	126.1

175' East of

M ^o L		0.6	128.1
-		1.9	126.8
4		2.5	126.2
Ct.		2.7	125.8
4		3.5	125.2
-		4.4	124.3
AsL		5.3	123.4

(900) West line at 16th

SoL		2.7	126.0
-		1.4	127.3
	115.4 139.30	0.96	127.76
1/4		10.9	128.4
Ct.		10.9	128.4
1/4		10.4	128.4
-		9.5	139.8
M ^o L		8.8	130.5

West Curb Line of 16th

No L	13930	11.6	127.7
-		10.6	128.7
4		9.3	130.0
Cl.		7.9	131.4
4		6.3	133.0
-		5.7	133.6
No L		6.2	133.1

West 1/4 Line

No L		3.4	135.9
-		4.3	135.0
4		5.4	133.9
Cl.		6.7	132.6
4		8.2	131.1
-		9.9	129.4
No L		11.4	127.9

Center Line of 16th

No L.		9.8	128.5
-		8.2	131.1
4		7.0	132.3
Cl.		6.2	133.1
4		5.3	134.0
-		3.9	135.4
No L		2.5	136.0

East 1/4 Line

No L.		1.8
-		2.4
4		2.7
Cl.		3.4
4		4.1
-		5.4
No L.		8.5

East Curb Line

No L.		8.6	130.7
-		6.3	133.0
4		5.9	133.4
Cl.		5.2	134.1
4		5.1	134.2
-		3.7	135.6
No L.		2.3	137.0

South Park Boulevard

East Curb Line			
No Line	13730	1.8	137.5
-		2.4	136.9
4		2.8	136.5
Ct.		3.5	135.8
4		4.0	135.3
-		5.7	133.6
No L.		8.7	130.6

~~East Line of 16th St.~~

No L.		6.3	
-		5.0	
4		3.4	
Ct.		2.5	
4		1.6	
-		1.0	
No L.		1.3	

B.M. 10.89 146.84 325 135.95
 Spk in west gate post S.E. Cor at
 16th & Park Line.

5/16/05 Hutchinson
 Evans
 Service

East Line of 16 th St.			
No Line	146.84	12.6	134.2
-		11.4	135.4
1/4		10.4	136.4
Ct.		9.7	137.1
1/4		8.9	137.9
-		7.9	138.9
No Line		8.3	138.5

25' East of 16th St.

No L.		4.5	142.3
-		5.2	141.6
1/4		5.7	140.9
Ct.		7.2	139.6
1/4		8.2	138.6
-		9.0	137.8
No L.		9.8	137.0

50' East of

No L.		7.8	139.0
-		6.7	140.1
1/4		5.5	141.3
Ct.		5.2	141.6
1/4		4.4	142.4
-		3.7	143.1
No Line		2.9	143.9

75' East of 16 th			
M ^o L	14684	1.0	145.8
-		1.7	145.1
A		3.3	143.5
Ct		4.2	142.6
A		5.0	141.8
-		6.4	140.4
So L		7.4	139.4

100' East of			
So L		2.1	139.7
-		6.3	140.5
A		4.8	142.0
Ct		3.8	143.0
A		2.0	144.0
-		1.5	145.3
M ^o L		0.7	146.1

125' East of			
M ^o L		1.8	145.0
-		2.1	144.7
A		3.7	143.1
Ct		4.5	142.3
A		5.3	141.5
-		6.6	140.2
So L		7.5	139.3

150' East of

So L	9.0	137.8
-	7.7	139.1
A	6.6	140.2
Ct	5.5	141.3
A	4.6	142.2
-	3.6	143.2
M ^o L	2.8	144.0

175' East of

M ^o L	4.9	141.9
-	5.5	141.3
A	6.5	140.3
Ct	7.9	138.9
A	8.6	138.2
-	9.9	136.9
So L	11.0	135.8

(700) West line of 17th

So L	14.5	132.3
-	13.1	133.7
A	12.1	134.7
Ct	10.8	136.0
A	9.1	137.7
-	8.4	136.4
M ^o L	7.1	139.7

West Curb Line of 17th

No L.	12684	9,6	137,2
-		10,8	136,0
4		12,1	134,7
Ct.		12,9	133,9
	172	135,55	133,81
1/4		2,7	132,9
-		3,7	131,9
No L.		5,2	130,4
West 1/4 Line			
No L.		6,7	128,9
-		5,6	130,0
4		4,6	131,0
Ct.		3,5	132,1
4		2,0	133,6
-		1,3	134,3
No L.		0,3	135,3
Center Line			
No L.		2,2	132,4
-		3,1	132,5
4		4,4	131,2
Ct.		5,7	129,9
4		6,7	128,9
-		7,6	128,0
No L.		9,1	126,5

East 1/4 Line

No L.	135,55	10,5	125,1
-		9,2	126,4
4		8,4	127,2
Ct.		7,5	128,1
4		6,3	128,3
-		5,4	130,2
No L.		4,2	131,4

East Curb Line

No L.		6,0	129,6
-		6,8	128,8
4		7,9	127,7
Ct.		9,7	125,9
4		10,3	125,3
-		11,2	124,4
No L.		12,7	123,9

East Line of 17th

No L.		14,5	121,1
-		13,6	122,0
4		12,6	123,0
Ct.		11,3	124,3
4		10,3	125,3
-		9,4	126,2
No L.		8,2	127,4

25' East of 17th

No L.	135.50	117.	123.9
-		13.3	122.3
0.14	122.81	12.88	122.67
4		1.7	121.1
ct.		2.6	120.2
1/4		3.8	119.0
-		4.9	117.9
So L.		5.9	116.9

50' East of

rodms		8.7	114.1
-		7.7	115.1
4		6.7	116.1
ct.		5.8	117.0
4		4.9	117.9
-		3.7	119.1
No L.		2.5	120.3

75' East of

No L.		5.2	117.6
-		6.4	116.4
4		7.7	115.1
ct.		8.6	114.2
4		9.8	113.0
-		11.0	111.8
So L.		12.0	110.8

96.00

48

100' East of

No L.	122.81	14.8	108.0
-		13.8	119.0
1/4		12.8	120.0
ct.		12.0	110.2
1/4		11.3	111.5
-		9.8	113.0
No L.		9.1	113.7

125' East of

No L.		11.8	111.2
-		12.7	110.1
0.19	110.66	12.24	110.47
1/4		2.0	108.7
ct.		3.3	107.4
1/4		3.7	107.0
-		3.6	106.9
So L.		4.9	105.8

150' East of

So L.		7.6	103.1
-		7.1	103.6
4		6.1	104.6
ct.		5.2	105.5
4		4.4	106.3
-		4.4	106.3
No L.		3.5	107.2

175' East of

No. L.	11066	6.3	104.4
-		7.0	103.7
A		7.5	103.2
Ch		7.6	103.1
A		8.6	102.1
-		9.0	101.7
No. L.		9.7	101.0

(200') West Line of 18th

No. L.		11.5	99.2
-		11.0	99.7
A		10.2	100.5
Ch		10.2	100.5
A		9.6	101.1
-		8.9	101.8
No. L.		8.7	102.0

West Curb Line

No. L.		10.5	100.2
-		10.3	100.4
A		11.2	99.3
Ch		11.7	99.0
A		12.0	98.7
-		12.6	98.1
No. L.		13.7	97.5

West 1/4 Line

No. L.	11966	14.2	96.5
-		13.6	97.1
A		13.3	97.4
Ch		12.6	98.1
A		12.7	98.0
-		12.3	98.4
No. L.		12.0	98.7
	1.61	99.37	12.90
			97.76

Center Line of 18th

No. L.		1.9	97.5
-		1.9	97.5
A		2.2	97.2
Ch		2.5	96.9
A		3.4	96.0
-		3.9	95.5
No. L.		3.9	95.5

East 1/4 Line

No. L.		9.5	89.9
-		9.1	90.3
A		7.7	91.7
Ch		4.4	95.0
A		4.1	95.3
No. L.		3.1	96.3
		3.1	96.3

East Curb Line

M ^o Line	99.37	571	93.3
2' mo of M ^o 1/4 Line	49	571	94.5
1/4	7.6		94.3
Ch.	9.4		91.8
A	9.4		90.0
-	10.0		90.0
So L.	10.2		89.4
East Line of 18 th			
So L.	9.6		89.2
-	10.8		89.8
A	10.3		88.6
Ch.	9.7		89.1
A	9.6		89.7
3' So of M ^o Curb	8.1		89.8
Curb	6.3		91.3
M ^o Line	6.7		93.1
25' East of 18 th			
M ^o L.	8.9		92.7
-	9.1		90.5
A	9.9		90.3
Ch.	10.4		89.5
A	11.2		89.0
-	12.4		88.2
So L.	11.0		87.0
			88.4

99.37

5.72	93.08	12.0	87.36
9.67	93.14	1	83.47
6.84	94.20		87.36
50' East of 18 th			
So L.		9.5	84.7
-		10.2	84.0
A		8.9	85.3
Ch.		8.5	85.7
1/4		7.6	86.6
-		7.1	87.1
M ^o L.		4.5	89.7
75' East of			
M ^o L.		9.2	83.0
-		9.6	84.6
1/4		11.0	83.2
Ch.		12.3	81.7
1/4		13.6	80.6
-		15.0	79.2
4' Roof Curb		15.9	79.2
4' " " "		12.6	81.6
So L.		14.8	81.4

100 ~~125~~ East of

No L	94.20	13.2	82.0
2' Foot Curt		13.1	81.1
Curt		15.6	78.6
A		15.4	78.8
Cl.		14.6	79.6
1/4		14.3	79.9
Curt		13.3	80.9
11° Line		10.3	83.9

125 East of

No L.		11.1	83.1
-		11.5	82.7
A		11.4	82.8
Cl.		11.1	83.1
A		11.1	83.1
-		12.0	84.2
No L.		12.6	81.6

~~125~~ 150 East of

No L.		11.5	82.7
-		10.8	83.4
A		8.3	85.9
Cl.		6.5	87.7
A		5.0	89.2
-		5.3	88.9
No L.		6.0	88.2

175 East of

51

No L	3.9	90.3
-	3.4	90.8
1/4	3.5	90.7
Cl.	4.7	89.5
9' Foot Center	5.5	88.7
1/4	7.4	86.8
-	9.4	84.8
No L.	9.8	84.4
(200) West Line of 19 th		
No L	9.4	84.8
-	8.8	85.4
1/4	7.2	87.0
9' Foot Center	5.2	89.0
Center	4.4	89.8
1/4	3.3	90.9
-	3.0	91.2
No L.	2.5	91.7

West Curb Line

No L.	94.20	1.5	92.7
-		2.9	91.3
4		3.4	90.8
Ct.		4.9	89.3
4		7.0	87.2
-		8.2	86.0
No L.		8.6	85.6

West 1/4 Line

No L.		8.6	85.6
-		7.6	86.6
1/4		6.1	88.1
Ct.		4.7	89.5
4		3.2	91.0
-		2.5	91.7
No L.		1.3	92.9

Center Line of

No L.		1.0	93.2
-		1.9	92.3
4		3.3	90.9
Ct.		4.4	89.8
4		5.9	88.3
-		7.4	86.8
No L.		8.4	85.8

East 1/4 Line

No L.	7.4	86.8
-	6.6	87.6
4	5.5	88.7
Ct.	3.7	90.5
4	2.6	91.6
-	1.6	92.6
No L.	0.3	93.9

East Curb Line

No L.	0.0	94.2
-	1.4	92.8
4	2.7	91.6
Ct.	4.0	90.2
4	5.3	88.9
-	6.1	88.1
No L.	7.0	87.2

East Line of 19th

No L.	6.7	87.5
-	5.9	88.3
4	4.7	89.5
Ct.	3.8	90.4
4	2.2	92.0
-	1.0	93.2
No L.	+0.3	94.5

25' East of 1972

No. L.	94,20	+ 0.3	94,5
-		0.6	93.6
4		2.4	91.8
Ch.		3.1	91.1
4		4.4	89.8
-		5.7	88.5
No. L.		6.8	87.7

50' East of

No. L.		6.3	87.9
-		4.8	89.4
4		4.3	89.9
Ch.		3.1	91.1
4		1.8	92.4
-		1.2	93.0
No. L.		0.0	94.2

75' East of

No. L.		0.7	94.0
-		1.3	92.9
4		2.4	91.8
Ch.		3.4	89.8
4		4.3	87.9
-		5.3	88.9
No. L.		6.5	87.7

100' East of

No. L.	94,20	6.9	87.3
-		4.6	88.6
4		4.2	90.0
Ch.		3.1	91.1
4		2.7	92.0
-		1.1	93.1
No. L.		0.3	93.9

125' East of

No. L.		0.3	93.9
-		1.0	93.2
4		2.4	91.8
Ch.		3.7	90.5
4		4.9	89.3
-		6.5	87.7
No. L.		7.3	86.9

605 93.87

6.38 87.82

150' East of

No. L.		8.3	85.6
-		7.0	86.9
4		6.5	87.4
Ch.		4.4	89.5
4		3.3	90.6
-		2.3	91.6
No. L.		1.0	92.9

175' East of 19th

11 ^o Line	93.87	2.9	91.0
-		4.4	89.5
1/4		5.9	88.0
5' 11 ^o of Ct.		6.8	87.1
Ct.		8.9	85.0
1/4		8.7	85.2
4' S of 1/4 Line		9.0	84.9
Center		12.8	81.1
So L.		18.7	75.2

195' East of 19th

North Line		4.5	89.4
-		6.0	87.9
1/4	88.72	5.5	83.2
Ct.		5.0	83.7
1/4		7.0	81.7
-	79.99	8.7	71.3
So L.	68.59	3.1	65.5

(200) West Line of 20th

11 ^o Line	88.72	5.1	83.6
-		5.3	83.4
1/4		5.5	83.2
Ct.		8.8	79.9
1/4		16.0	72.7
Center	79.99	11.4	68.6
	1.45	68.59	12.85
So Line		7.3	61.3

West ~~East~~ Center Line of 20th

11 ^o L.	93.87	11.6	82.3
	5.68	88.72	10.83
-		5.6	83.1
1/4		13.3	75.4
	2.99	79.99	11.72
Center	68.59	3.1	65.5
1/4		5.6	63.0
Center		6.7	61.9
So L.		7.4	61.2

West 1/4 Line of 20th

So L.	68.59	7.0	61.6
-		6.6	62.0
1/4		5.5	63.1
Ct.		5.5	63.1
1/4		1.0	67.6
-		+3.0	71.6
No Line		+9.0	75.6

Center Line

So Line		6.2	62.4
-		6.7	61.9
4		6.7	61.9
Ct.		5.9	62.7
1/4		4.9	63.5
-		3.3	65.3
No Line		+1.4	70.0

East 1/4 Line

No L.		1.5	67.1
-		4.9	63.7
4		6.1	62.5
Ct.		5.7	62.9
4		5.7	62.9
-		5.0	63.6
No L.		5.1	63.5

East Curt Line

So L.	68.59	5.9	62.7
-		5.1	63.5
4		5.1	63.5
Ct.		5.4	63.2
4		5.3	63.3
-		5.4	63.2
No L.		5.6	63.0

East Line of 20th

No L.		4.3	64.3
-		5.0	63.6
4		4.7	63.9
Ct.		4.6	64.0
4		5.1	63.5
-		5.6	63.0
No L.		6.3	62.3

25' East of 20th

So L.		7.3	61.3
-		7.2	61.4
4		6.4	62.2
Ct.		6.1	62.5
4		4.2	64.4
-		4.4	64.2
No L.		3.8	64.8

South Park Boulevard,

50' East of 20th

No L.		68.97	5.2	63.4
-			6.5	62.1
A			7.4	61.2
Cl.			7.5	61.1
A			7.6	61.0
-			4.6	62.0
No L.			3.2	65.4
B.M.	4.95	71.26	2.28	66.31
Top of Post N.W. Cor. of Post at S.E. Cor. of St.				
75' East of				
No L.			5.8	65.5
-			5.8	65.5
A			5.6	65.7
Cl.			5.3	66.0
A			5.2	66.1
-			5.2	66.1
No L.			7.7	63.6
100' East of				
No L.			5.0	66.3
-			5.3	66.0
A			5.5	65.8
Cl.			5.5	65.8
A			5.6	65.7
-			4.9	66.4
Prof.			5.6	65.7

Note from 7' Hubson 21st to Curt Line
is 21 feet.

150' East of

No L.	71.26	4.8	66.5
-		5.0	66.3
A		4.8	66.5
Cl.		4.7	66.6
A		4.6	66.7
-		2.4	66.9
No L.		4.3	67.0
(200) West Line of 21 st			
North L.		3.9	67.4
-		3.9	67.4
A		3.8	67.5
Cl.		4.0	67.3
A		4.2	67.1
-		4.1	67.2
No L.		3.3	68.0
West Curt L			
No L.		2.8	68.5
-		3.3	68.0
A		3.9	67.4
Cl.		3.7	67.6
A		3.2	68.1
-		3.3	68.0
No L.		3.6	67.7

WEST 1/4 Line

No L.	71.26	3.0	68.13
-		2.9	68.4
+		3.3	68.0
Ct.		3.8	67.5
+		3.8	67.5
-		3.4	67.9
No L.		3.3	68.0

Center Line of

No L.		3.1	68.2
-		3.1	68.2
+		3.4	67.9
Ct.		3.6	67.7
+		3.4	67.9
-		3.0	68.3
No L.		2.6	68.7

East 1/4 Line

No L.		2.7	68.6
-		3.1	68.2
+		3.2	68.1
Ct.		3.6	67.7
+		3.1	68.2
-		2.5	68.8
No L.		4.3	69.0

East Curve Line

57

No L.	2.3	69.0
-	2.5	68.8
+	2.9	68.4
Ct.	3.2	68.1
+	2.7	68.6
-	2.4	68.9
No L.	2.7	68.6

East Line of 21st

No L.	1.8	69.5
-	1.7	69.4
+	2.3	69.0
Ct.	2.9	68.4
+	2.8	68.5
-	2.4	68.9
No L.	2.4	68.9

50' East of

No L.	1.3	70.0
-	1.1	70.2
+	1.5	69.8
Ct.	1.9	69.4
+	1.5	69.8
-	1.3	70.0
No L.	1.3	70.0

75' East of 21st

	71.26		
	11.67	81.43	69.76
M.L.		11.7	69.7
-		11.7	69.7
+		11.6	69.8
Ct.		11.3	70.1
+		10.4	81.0
-		10.4	81.0
SoL		10.3	71.1
	100 East of		
SoL		8.7	72.1
-		8.8	72.6
+		8.5	72.9
Ct.		8.6	72.8
+		9.8	71.6
-		9.6	71.8
M.L.		10.0	71.4
	125' East of		
M.L.		7.7	73.7
-		6.6	74.8
+		6.5	74.9
Ct.		6.8	74.6
+		7.0	74.4
-		6.6	74.8
SoL		5.5	75.9

150' East of

SoL	81.43	1.7	79.7
-		3.5	77.9
+		4.4	77.0
Ct.		4.7	76.7
+		4.3	77.1
-		4.5	76.9
M.L.		4.9	76.5

175' East of

M.L.		1.6	78.8
-		2.0	79.4
+		1.9	79.5
Ct.		1.7	79.7
+		0.8	80.6
	12.42	93.84	0.01
-		11.3	82.5
SoL.		10.1	83.7

5/17/05 Hutchison
Evans
Renton

59

(200) West Line of 22nd

Roof	93.84	0.2	93.6
-		4.5	89.3
+		7.3	86.5
Ch.		9.4	84.5
+		10.8	83.0
-		11.2	82.6
M ^o L		11.6	82.2

West Curt Line of

M ^o L.		10.0	83.9
-		9.3	84.5
+		7.2	86.6
Ch.		5.3	88.5
+		2.5	91.3
-		0.0	93.8
Do L.	104.85	7.0	97.9

West 1/4 Line of 22nd

M ^o Line	93.84	6.9	86.9	
-		4.0	89.8	
+		1.8	92.0	
	11.88	104.85	0.87	92.97
Center		10.5	94.4	
+		7.1	97.8	
-		5.1	99.8	
Do L.		2.4	102.5	

Center Line of 22nd

Roof	117.14	8.5	108.6
-		11.8	105.3
	104.85		
1/4		2.5	102.4
Ch.		5.5	99.4
1/2		8.5	96.5
-		11.2	93.7
M ^o L.		14.9	90.0

5/19/05
Hutchinson
Eames
Series

East

~~West~~ 1/4 Line

M ^o L.	104.85	10.7	94.2
-		5.6	99.3
4		0.9	104.0
	117.14		
Ct.		11.9	105.2
1/4		8.7	108.4
-		6.0	111.1
M^oL. South L.		2.2	114.9

East ~~West~~ Curb Line

M ^o L.	104.85	9.0	95.9
-		4.1	100.9
	117.14		
1/4		8.8	108.3
Ct.		6.3	110.8
1/4		4.6	112.5
-		3.2	113.9
So L.		0.0	117.1

60

East Line of 22nd

M ^o L.	104.85	8.9	96.0
-	12.73	117.14	0.44
			104.41
-		13.3	103.8
4		7.5	109.6
Ct.		5.0	112.1
4		2.8	114.3
-		0.4	116.7
	8.48	125.02	0.60
			116.54
So L.		6.6	118.4

25' East of 22nd

So L.	125.02	2.1	122.9
-		4.2	120.8
4		6.8	118.2
Ct.		10.7	114.3
	113.93		
1/4		7.4	106.5
Curb		13.0	100.9
M ^o L.		18.2	95.7

50' East of

No 2	124.02	+1.0	126.0
-		3.9	122.0
1/4		6.9	119.0
Center		13.4	111.6
	113.93		
1/4		8.3	105.6
-		13.6	100.3
No Line		18.4	95.5

75' East of

No 2	124.02	0.7	124.3
-		7.8	118.2
4		14.9	111.0
	113.93		
Ct.		6.8	107.1
1/4		11.2	102.7
-		15.0	98.9
No Line		19.0	94.9

100' East of

No 2	124.02	6.1	118.9
-		12.1	112.9
T.P.	1.63	113.93	12.2
1/4		8.1	105.8
Ct.		12.3	101.6
1/4		16.0	97.9
-		16.7	97.2
No L		15.3	98.4

125' East of 2nd

No L		8.5	105.4
-		11.0	102.9
1/4		13.3	100.6
Ct.		14.4	99.5
1/4		10.4	103.5
-		6.5	107.4
No L		0.4	113.5

150' East of

No L		4.2	109.7
-		9.8	104.1
1/4		7.5	106.4
Ct.		7.3	107.6
1/4		8.4	105.5
-		5.1	108.2
No L		2.4	110.7

175' East of 23rd

M ^o Line	126.49	1.00	116.5
-	113.93	2.2	111.7
4		0.0	113.9
Ct.		+1.5	115.4
4		+1.0	114.9
-		+1.0	114.9
So Line		0.4	113.5
1270	126.49	0.14	113.79

(200) West Line of 23rd

M ^o Line		1.6	124.9
-		3.8	122.7
4		3.7	122.8
1304	138.31	1.22	125.27
Ct.		9.7	128.6
1/4		7.5	130.8
-		10.6	129.7
So L		12.7	125.6

West Curve Line of 23rd

So L		9.9	128.4
-		6.3	
4		4.0	
Ct		7.3	131.0
1/4		13.0	
-		12.6	
M ^o Line		9.3	128.0

West 1/4 Line of 23rd

M ^o Line	138.31	5.8	132.5
-		9.0	129.3
4		11.0	127.3
Ct.		5.4	132.9
4		0.9	137.4
-		2.3	136.0
So Line		4.4	133.9
1245	149.04	1.72	136.59

Center Line of 23rd

So L		14.1	134.9
-		10.4	138.6
4		9.1	139.9
Ct.		13.0	136.0
4		18.0	131.0
-		16.5	132.5
M ^o Line		12.9	136.1

East 1/4 Line of 23rd

M ^o Line		8.2	140.8
-		12.5	136.5
4		15.9	133.1
Ct.		11.5	137.5
4		7.5	141.5
-		9.3	140.7
So L		12.3	136.7

East Curt Line

SoL	149.04	9.6	139.4
-		7.0	142.0
4		5.9	143.1
Ch		9.4	139.6
4		12.0	137.0
-		8.6	140.4
M ^o L		4.7	145.3

East Line of 23rd

M ^o L		2.0	147.0
-		3.2	145.8
4		5.7	143.3
Ch		4.7	144.3
4		2.5	146.5
-		3.1	145.9
SoL		5.2	144.8
	12.94	161.18	0.80

25th East of 23rd

SoL		6.8	155.4
-		6.6	154.6
114		7.2	154.0
Ch		8.5	152.7
114		8.9	152.3
-		9.8	151.4
M ^o L		9.3	157.9

50' East of 23rd

M ^o L	161.18	2.1	159.1
-		2.7	158.5
4		2.4	158.8
Ch		3.2	158.0
4		3.1	158.1
-		2.4	158.8
SoL		1.0	160.2
	12.67	173.50	0.35

75' East of 23rd

SoL		10.4	162.1
-		11.0	172.5
4		12.2	171.3
Ch		12.0	161.5
4		11.8	161.7
-		11.5	162.0
M ^o L		9.5	164.0

100' East of

M ^o L		6.1	167.4
-		7.3	166.2
114		8.4	165.1
Ch		9.0	164.5
114		9.4	164.1
-		9.1	164.4
SoL		7.9	165.6

16978
340
17343

(150) West line of 24th

No L.	173.43	3.2	170.3
-		3.3	170.2
A		3.2	170.1
Ch.		3.0	170.5
A		2.9	171.2
-		1.4	172.1
No L		0.6	172.9

12.29 182.27

169.98

West Curb line of

No L		10.6	171.7
-		10.8	171.5
A		11.2	171.1
Ch.		10.7	171.6
A		10.1	172.2
-		9.1	173.1
No L		8.6	173.7

West 1/4 line

No L		7.1	175.2
-		7.7	174.6
A		8.4	173.9
Ch.		9.5	172.8
A		9.7	172.6
-		9.6	172.7
No L		9.0	171.3

Center line of

No L	182.27	8.1	174.2
-		8.3	174.0
A		9.0	171.3
Ch.		8.2	174.1
A		7.7	175.1
-		6.1	176.2
No L		5.5	176.8

East 1/4 line

No L		4.7	177.7
-		5.4	176.9
A		5.9	176.4
Ch.		6.5	175.8
A		7.3	175.0
-		7.1	175.2
No L		7.0	175.3

East Curb line

No L		5.8	176.8
-		5.6	176.7
A		5.8	176.5
Ch.		5.0	177.3
A		4.4	177.9
-		4.2	178.1
No L		3.6	178.7

East Line of 2476

M. Lms	182.27	2.6	179.7
-		3.1	179.2
A		3.5	178.8
Ct.		3.8	178.5
A		4.3	178.0
-		4.7	177.4
No L		4.6	177.7

25' East of

No L		1.5	181.8
-		2.0	180.3
A		1.7	180.4
Ct.		1.0	181.3
A		0.9	181.4
-	12.77	194.24	0.80
			181.47
-			12.3
M. L.		11.7	182.3

50' East of

M. L.		9.6	184.6
-		9.9	184.4
A		10.2	184.1
Ct.		9.9	184.3
A		10.6	183.5
-		10.6	183.7
No L		10.3	183.9

100' East of 2474

No L	194.24	6.9	187.3
-		6.6	187.7
A		6.0	187.7
Ct.		6.3	187.9
A		6.2	187.1
-		6.1	188.2
No L		6.1	188.1

150' East of

M. L.		3.7	190.5
-		3.3	190.9
A		3.1	191.1
Ct.		3.1	191.1
A		3.4	190.8
-		3.6	190.6
No L		3.4	190.8
	11.06	204.23	1.07
			193.17

200' East of 2472

No Lms		10.6	193.6
-		10.2	194.0
A		10.4	193.8
Ct.		10.2	194.0
A		9.9	194.3
-		10.1	194.1
M. Lms		10.5	193.7

250' East of

No L	204.23	7.3	196.9
-		7.2	197.0
A		7.5	196.7
Ct		7.6	196.6
A		7.5	196.7
-		7.3	196.9
No L		7.7	196.5

300' East of

No L		5.5	198.7
-		5.4	198.8
A		5.2	199.0
Ct		5.0	199.2
A		5.0	199.2
-		5.0	199.2
No L		5.0	199.2

325' East of

No L		5.8	198.4
-		5.5	198.7
A		4.6	199.6
Ct		4.2	200.0
A		4.4	199.8
-		4.4	200.0
No L		4.5	199.7

350' East of 2 x 1/2

No L	4.1	250.1
-	4.4	199.8
A	5.0	199.2
Ct	5.1	199.1
A	6.6	197.6
-	6.9	197.3
No L	9.4	194.8

375' East of

No L	10.2	194.0
-	10.0	194.2
A	8.3	193.9
Ct	7.7	196.5
A	6.4	197.8
-	5.0	199.2
No L	4.3	199.9

400' East of

No L	5.0	199.2
-	6.3	197.9
A	7.6	196.6
Ct	8.3	195.9
A	8.7	195.5
-	9.7	194.5
No L	11.5	192.4

425' East of

No 2	204.23	9.1	195.1
-		8.6	193.6
4		8.4	195.8
Ct.		8.1	195.1
4		7.7	196.5
-		6.6	197.6
So L		6.9	198.2

450' East of

Robin	1	6.9	198.2
-		6.3	197.9
4		7.1	197.1
Ct.		7.8	196.4
4		7.8	196.4
-		7.7	196.5
No 2		7.7	196.5

500' East of

South line		6.1	198.1
-		6.1	198.1
4		5.9	198.3
Ct.		5.7	198.5
4		5.6	198.6
-		5.5	198.7
No 2		5.4	198.8
	12.70	211.35	528
			198.65

550' East of 24 1/2

67

So L	211.35	11.1	200.3
-		11.0	200.4
4		11.3	200.1
Ct.		10.9	200.5
4		10.5	200.9
-		10.4	200.0
No 2		10.1	201.3

(600) West line of 25 1/2

No 2		8.2	203.2
-		8.0	203.4
14		8.1	203.3
Ct.		8.2	203.2
14		8.5	202.9
So L		8.4	203.0
So L		8.5	202.9

West Curt line at 25 1/2

So L		8.3	203.1
-		8.6	202.8
4		8.5	202.9
Ct.		8.3	203.1
4		7.6	203.8
-		7.5	203.9
No 2		7.4	204.0

West 1/4 Line of 25th

M ^o L	21135	6.8	2046
-		7.1	2043
A		7.2	2042
Ct.		7.8	2036
A		8.0	2034
-		8.2	2032
No L		8.4	2030

Center Line

No L		8.1	2033
-		7.8	2036
A		7.3	2041
Ct.		7.2	2042
A		7.0	2042
-		6.9	2045
M ^o L		6.2	2052

East 1/4 Line

M ^o L		5.7	2057
-		5.9	2053
A		6.3	2051
Ct.		6.7	2047
A		7.2	2042
-		7.4	2040
No L		8.0	2030

East Curt Line

68

So Line	8.2	2032
-	7.2	2042
A	7.0	2044
Ct.	6.3	2051
A	6.0	2054
-	5.8	2056
M ^o L	5.7	2057

East Line of 25th

M ^o L	4.2	2072
-	4.6	2068
A	5.3	2061
Ct.	5.8	2056
A	6.1	2053
-	6.2	2052
No L	5.7	2057

25' East of 25th

No L	5.2	2062
-	5.7	2064
A	4.7	2072
Ct.	4.1	2073
A	4.2	2072
-	3.9	2081
M ^o L	3.5	2079

50' East of

M ^o L	211.35	2.1	209.3
-		3.2	208.2
A		3.6	207.8
Cl.		3.7	207.7
A		4.1	207.3
-		4.4	207.0
SoL		4.2	207.2

100' East of

SoL		1.9	210.5
-		2.0	209.4
A		2.1	209.3
Cl.		2.1	209.3
A		1.9	209.5
-		1.5	209.9
M ^o L		1.0	210.4

10.97 221.07

150' East of

M ^o L		8.3	212.8
-		9.0	212.1
A		9.2	211.9
Cl.		9.4	211.7
A		10.0	211.1
-		10.0	211.1
SoL		10.1	211.0

200' East of 25th

69

SoL	221.97	8.2	212.9
-		8.2	212.9
A		8.4	212.7
Cl.		8.0	213.1
A		7.6	213.5
-		7.3	213.8
M ^o L		7.5	213.6

250' East of

M ^o L		6.0	215.1
-		6.1	215.0
A		6.5	214.6
Cl.		6.7	214.7
A		6.2	214.9
-		6.2	214.9
SoL		6.5	214.6

300' East of

SoL		4.2	216.9
-		4.6	216.5
A		4.7	216.4
Cl.		4.7	216.4
A		4.8	216.3
-		4.7	216.4
M ^o L		4.8	216.3

325' East of

M ^o L		5.7	215.4
-		5.4	215.7
A		5.2	215.9
Ch		5.0	216.7
A		4.8	216.3
-		4.7	216.4
So L		4.7	216.4

T.P. 350' East of

So L		7.0	214.4
-		7.1	214.0
1/4		7.4	213.7
Ch		7.5	213.6
1/4		8.0	213.1
-		8.3	212.8
M ^o L		8.4	212.7

375' East of

M ^o L		10.7	210.4
-		10.4	210.7
1/4		10.5	210.6
Ch		10.5	210.6
A		10.5	210.6
-		10.6	210.6
So L		10.3	210.8

400' East of

So L	221.07	12.6	208.5
-		13.2	207.9
A		13.4	207.7
Ch		13.6	207.5
A		13.6	207.5
-		13.4	207.7
M ^o L		13.2	207.9
1.34	210.67	11.74	209.33

450' East of

M ^o L		8.4	202.3
-		8.1	202.6
A		7.8	202.9
Ch		7.4	203.3
A		7.1	203.6
-		7.1	203.6
So L		6.7	204.0

500' East of

So L		8.2	202.5
-		8.4	202.3
A		8.8	201.9
Ch		9.4	201.3
A		10.3	200.4
-		11.9	199.4
M ^o L		11.6	199.7

525 East of

M.L.	210.7	14.1	196.6
-		12.0	198.7
4		11.0	199.7
Ct.		10.1	200.6
4		9.4	201.3
-		8.9	201.8
So L		8.6	202.1
(560) West Line of 26 th			
So L		8.2	202.5
-		8.5	202.2
4		8.8	201.9
Ct.		9.4	201.3
4		10.0	200.7
-		10.5	200.2
M.L.		11.0	199.7
West Curt Line			
M.L.		10.5	200.2
-		10.1	200.6
4		9.7	201.0
Ct.		9.0	201.7
4		8.5	202.2
-		8.4	202.3
So L		8.3	202.4

West 1/4 Line

So L	8.0	202.7
-	8.2	202.5
4	8.3	202.4
Ct.	8.8	201.9
4	9.2	201.5
-	9.7	201.0
M.L.	10.2	200.5
Center Line of 26 th		
M.L.	10.0	200.7
-	9.4	201.3
4	8.9	201.8
Ct.	8.5	202.2
4	8.2	202.5
-	8.0	202.7
So L	7.6	203.1
East 1/4 Line		
So L	7.5	203.2
-	7.9	202.5
4	8.1	202.6
Ct.	8.3	202.4
4	8.6	202.1
-	9.3	201.4
M.L.	11.0	199.7

East Curt Line

No Line	210.67	12.7	198.0
-		9.2	201.5
1/4		8.1	202.6
Ct.		7.9	202.8
4		7.7	203.0
-		7.6	203.1
No L.		7.2	203.1
East Line of 26 th			
No L.		6.8	203.9
-		7.0	203.7
4		7.5	203.2
Ct.		7.8	202.9
4		8.1	202.6
-		9.4	201.3
No L.		12.1	198.6
25' East of			
No L.		8.7	202.0
-		7.7	203.0
4		7.8	203.4
Ct.		7.3	203.4
4		6.7	204.0
-		6.2	204.5
No L.		6.1	204.6
9.48	214.07	6.08	204.59

50' East of 26th

72

No Line	214.07	8.4	205.7
-		9.0	205.1
4		9.4	204.7
Ct.		10.0	204.1
4		10.4	203.7
-		10.5	203.6
No L.		10.9	203.2
75' East of			
No L.		9.4	204.7
-		9.4	204.7
1/4		7.2	204.9
Ct.		8.8	205.3
4		8.4	205.7
-		8.0	206.1
No L.		8.0	206.1
100' East of			
No L.		7.4	206.7
-		7.5	206.6
4		7.5	206.6
Ct.		7.8	206.3
4		7.7	206.4
-		7.9	206.2
No L.		8.1	206.0

150' East of 26th

MoL	214.07	5.2	208.9
-		5.6	208.5
A		5.6	208.5
Ch		5.7	208.4
A		6.1	208.1
-		6.2	207.9
SoL		5.6	208.5
200' East of			
SoL		5.1	209.0
-		4.7	209.4
A		4.6	209.5
Ch		4.4	209.7
A		4.3	209.8
-		3.7	210.4
MoL		3.7	210.4
250' East of			
MoL		2.6	211.5
-		2.9	211.2
A		3.7	210.4
Ch		4.0	210.1
A		4.1	210.0
-		4.3	209.8
SoL		4.0	210.1

300' East of

SoL	214.07	3.4	210.7
-		3.1	211.0
A		3.0	211.1
Ch		2.9	211.2
A		2.6	211.5
-		2.1	212.0
MoL		1.6	212.5
	7.18	218.82	2.43
300' East of 26 th			
MoL		5.1	213.7
-		5.5	213.3
A		5.8	213.0
Ch		6.2	212.6
A		6.4	212.4
-		6.6	212.2
SoL		6.5	212.3
400' East of			
SoL		6.6	213.2
-		5.6	213.2
A		5.3	213.5
Ch		5.1	213.7
A		4.9	213.9
-		4.8	214.0
MoL		4.7	214.6

25
250' East of 26th

No L	218.82	5.5	215.3
-		3.8	215.0
A		4.1	214.7
ct		4.6	214.2
A		4.8	214.0
-		4.7	214.1
No L		4.7	214.1

500' East of

No L		4.5	214.3
-		4.6	218.2
A		4.9	213.9
ct		5.0	213.8
A		4.8	214.0
-		4.6	214.2
No L		4.4	214.4

550' East of

No L		5.9	212.9
-		6.2	212.6
A		6.2	212.6
ct		6.2	212.6
A		6.3	212.5
-		6.2	212.6
No L		5.8	213.0

(600) West Line of 27th

74

No L	218.82	9.1	209.7
-		9.2	209.6
A		9.8	209.0
ct		10.0	208.8
A		9.4	209.4
-		9.3	209.5
No L		9.2	209.6

West Curt Line of 27th

No L		10.0	208.8
-		10.3	208.5
A		10.5	208.3
ct		10.3	208.5
A		10.1	208.7
-		10.1	208.7
No L		9.9	208.9

West 1/4 Shook

No L		11.0	207.8
-		11.4	207.4
A		11.4	207.4
ct		12.1	206.7
A		11.9	206.9
-		11.1	207.7
No L		10.5	208.3

So Park Boulevard (Quit 7/19/05)

75

Center Line of 27th

M ^o L		218.82	11.1	207.7
-			11.8	207.0
4			14.8	206.0
Ct.			13.2	205.6
4			13.0	205.8
-			12.6	206.2
So L.			11.9	206.9
B.M.	2.88	210.90	10.80	208.02

East End of (c) on 13' Line So Line of Park on 27th St.

East 1/4 Line of 27th

So L.			4.9	206.0
-			6.0	204.9
4			6.6	204.3
Ct.			6.8	204.1
4			6.4	204.5
-			5.2	205.7
M ^o Lms			4.5	206.4

East Curb Line

M ^o L		210.90	5.9	205.0
-			6.8	204.1
4			7.8	203.1
Ct			7.8	203.1
4			7.6	203.3
-			7.2	203.7
So L			6.8	204.1

East Line of 27th

So L			7.2	203.7
-			8.0	202.9
4			8.4	202.5
Ct			9.0	201.9
4			9.0	201.9
-			8.1	202.8
M ^o L			7.1	203.8

25' East of

M ^o L			9.5	201.4
-			10.7	200.2
4			11.4	199.4
Ct			11.7	199.2
4			11.8	199.1
-			10.8	200.1
So L			10.1	200.8

0.73 199.66 11.77 198.93

50' East of 27th

So L.	199.66	1.8	198.9
-		2.5	197.2
4		3.0	196.7
ct.		3.1	196.6
4		3.0	196.7
-		2.7	197.0
M ^o L		2.0	197.7
75' East of			
M ^o L		4.8	194.9
-		5.3	194.4
4		5.4	194.3
ct.		5.5	194.2
4		5.5	194.2
-		5.7	194.7
So L.		4.7	195.0
100' East of			
So L.		7.7	192.0
-		8.2	191.5
4		7.9	191.8
ct.		7.9	191.8
4		8.3	191.4
-		8.0	191.7
M ^o L		7.6	192.1

125' East of

M ^o L	199.66	10.0	189.7
-		10.6	189.1
4		11.0	188.7
ct.		11.0	188.7
4		10.8	188.9
-		10.9	188.8
So L.		10.4	189.3
	0.96	187.88	12.74
150' East of			
So L.		2.0	185.9
-		2.3	185.6
4		2.2	185.7
ct.		1.8	186.1
4		1.5	186.4
-		1.4	186.5
M ^o L		0.6	187.3
175' East of			
M ^o L		3.7	184.2
-		4.4	183.4
4		6.4	181.5
ct.		6.9	181.0
4		6.6	181.3
-		7.6	180.3
So L.		7.0	180.9

200' East of

So L.	187.88	12.3	175.6
-		13.0	174.9
A		12.8	175.1
Ct.		13.0	174.9
A		11.8	176.1
-		11.1	176.8
M ^o L.		11.3	176.6
225' East of			
M ^o L.		11.0	176.9
Ct.		11.0	176.9
A		11.1	176.8
Ct.		11.6	176.3
A		12.9	175.0
-		14.4	173.5
So L.		16.0	171.9
250' East of			
So L.		14.1	173.2
-		14.7	173.2
A		16.2	171.7
Ct.		16.1	171.8
A		16.1	171.8
-		15.8	172.1
M ^o L.		15.4	172.5

275' East of

77

M ^o Line	187.88	6.5	181.4	
-		7.0	180.9	
A		7.6	180.3	
Ct.		8.0	179.5	
A		6.6	181.3	
-		5.5	182.4	
So L.		3.5	184.4	
300' East of				
	11.28	196.54	2.62	185.26
So L.			7.7	188.8
-			7.4	189.1
A			7.3	189.2
Ct.			7.1	189.4
A			7.3	189.1
-			7.1	189.4
M ^o L.			6.5	190.0
325' East of				
So L.			4.0	192.5
-			3.5	193.0
A			3.1	193.4
Ct.			4.8	193.7
	10.65	205.02	2.87	194.17
A			11.2	193.8
-			11.3	193.7
M ^o L.			11.2	193.8

350' East of 277 1/2

South Line	205.02	9.2	195.8
-		8.6	196.4
+		8.5	196.5
ct.		8.3	196.7
+		7.8	197.2
-		7.7	197.3
M ^o L		7.7	197.3

375' East of

South Line		6.5	198.5
-		6.2	198.8
+		5.8	199.2
ct.		5.5	199.5
+		5.4	199.6
-		5.5	199.5
M ^o Line		5.4	199.6

400' East of

M ^o L		3.0	202.0
-		3.2	202.8
+		3.0	202.0
ct.		3.4	201.6
+		3.8	201.2
-		4.4	200.8
Any		4.6	200.4

10.49 214.68 0.83 204.19

450' East of

South Line	214.68	11.4	203.3
-		10.7	204.0
+		9.8	204.9
ct.		9.4	205.3
+		9.3	205.4
-		9.1	205.6
M ^o Line		8.9	205.8

500' East of

M ^o L		6.5	208.2
-		6.8	207.9
+		7.2	207.5
ct.		8.7	206.0
+		7.9	206.8
-		8.4	206.3
So L.		8.8	205.9

550' East of

So L.		6.8	207.9
-		6.2	208.5
+		5.5	209.2
ct.		5.1	209.6
+		4.6	210.1
-		4.3	210.4
M ^o L		4.0	210.7

South Park Boulevard

ended 5/20/55

Hutchinson
Evans
Seaman

79

(600) West line of 28th

No 2	214.68	2.1	212.6
-		2.4	211.3
4		2.8	211.9
ct.		3.1	211.2
4		3.4	211.3
-		3.6	211.1
So L.		3.7	211.0
1.86	206.83	9.21	205.47
Chk on B.m. at		5.76	201.07
28 th + "B" Streets			

71

181.26

341

184.77

5.74

178.83

210

180.93

10.75

B.M. 16 9.98 Stone monument S.W. Cor. B.V. $\frac{12}{4}$ Park
S.W. Cor. of Stone.

72

73

74

Return to City Engineers Office
City Hall, San Diego, Cal.

TRAVERSE TABLE FOR TRANSIT BOOK.

From 1° to 90° for a distance of 100.

Degrees.	DEGREES.		¼ DEGREE.		½ DEGREE.		¾ DEGREE.		Degrees.
	Lat.	Dep.	Lat.	Dep.	Lat.	Dep.	Lat.	Dep.	
0	99.98	1.75	100.00	0.44	100.00	0.87	99.99	1.31	89
1	99.94	3.49	99.98	2.18	99.97	2.62	99.95	3.05	88
2	99.86	5.23	99.92	3.93	99.91	4.36	99.88	4.80	87
3	99.76	6.98	99.84	5.67	99.81	6.10	99.79	6.54	86
4	99.62	8.72	99.73	7.41	99.69	7.85	99.66	8.28	85
5	99.45	10.45	99.58	9.15	99.54	9.58	99.50	10.02	84
6	99.25	12.19	99.41	10.89	99.36	11.32	99.31	11.75	83
7	99.03	13.92	99.20	12.62	99.14	13.05	99.09	13.49	82
8	98.77	15.64	98.97	14.35	98.90	14.78	98.84	15.21	81
9	98.48	17.36	98.70	16.07	98.63	16.50	98.56	16.93	80
10			98.40	17.79	98.33	18.22	98.25	18.65	79
11	98.16	19.08	98.08	19.51	97.99	19.94	97.90	20.36	78
12	97.81	20.79	97.72	21.22	97.63	21.64	97.53	22.07	77
13	97.44	22.50	97.34	22.92	97.24	23.34	97.13	23.77	76
14	97.03	24.19	96.92	24.62	96.81	25.04	96.70	25.46	75
15	96.59	25.88	96.48	26.30	96.36	26.72	96.25	27.14	74
16	96.13	27.56	96.00	27.98	95.88	28.40	95.76	28.82	73
17	95.63	29.24	95.50	29.65	95.37	30.07	95.24	30.49	72
18	95.11	30.90	94.97	31.32	94.83	31.73	94.69	32.14	71
19	94.55	32.56	94.41	32.97	94.26	33.38	94.12	33.79	70
20	93.97	34.20	93.82	34.61	93.67	35.02	93.51	36.43	69
21	93.36	35.84	93.20	36.24	93.04	36.65	92.88	37.06	68
22	92.72	37.46	92.55	37.86	92.39	38.27	92.32	38.67	67
23	92.05	39.07	91.88	39.47	91.71	39.87	91.53	40.27	66
24	91.35	40.67	91.18	41.07	91.00	41.47	90.81	41.87	65
25	90.63	42.26	90.45	42.66	90.25	43.05	90.07	43.44	64
26	89.88	43.84	89.69	44.23	89.49	44.62	89.30	45.01	63
27	89.10	45.40	88.90	45.79	88.70	46.17	88.50	46.56	62
28	88.29	46.95	88.09	47.33	87.88	47.72	87.67	48.10	61
29	87.46	48.48	87.25	48.86	87.04	49.24	86.82	49.62	60
30	86.60	50.00	86.38	50.38	86.16	50.75	85.94	51.13	59
31	85.72	51.50	85.49	51.88	85.26	52.25	85.04	52.62	58
32	84.80	52.99	84.57	53.36	84.34	53.73	84.10	54.10	57
33	83.87	54.46	83.63	54.83	83.39	55.19	83.15	55.56	56
34	82.90	55.92	82.66	56.28	82.41	56.64	82.16	57.00	55
35	81.92	57.36	81.66	57.71	81.41	58.07	81.16	58.42	54
36	80.90	58.78	80.64	59.13	80.39	59.48	80.13	59.83	53
37	79.86	60.18	79.60	60.53	79.34	60.88	79.07	61.22	52
38	78.80	61.57	78.53	61.91	78.26	62.25	77.99	62.59	51
39	77.71	62.93	77.44	63.27	77.16	63.61	76.88	63.94	50
40	76.60	64.28	76.32	64.61	76.04	64.94	75.76	65.28	49
41	75.47	65.61	75.18	65.93	74.90	66.26	74.61	66.59	48
42	74.31	66.91	74.02	67.24	73.73	67.56	73.43	67.88	47
43	73.14	68.20	72.84	68.52	72.54	68.84	72.24	69.15	46
44	71.93	69.47	71.63	69.78	71.33	70.09	71.02	70.40	45
45	70.71	70.71							
Degrees.	Dep.	Lat.	Dep.	Lat.	Dep.	Lat.	Dep.	Lat.	Degrees.
Degrees.	DEGREES.		¼ DEGREE.		½ DEGREE.		¾ DEGREE.		Degrees.