

SALAMANDER
DESIGNS



SALAMANDER + DELL PARTNER FOR YOU

Salamander supports Dell to bring together elegant professional display technology and premium AV furniture for mutual integrators and end customers. These turn-key systems feature innovative cabinets and mobile carts designed for professional displays to provide stunning aesthetics and ergonomically-correct display positioning for the best possible user experience.

Complete Deployment for a Better Experience

- Sleek, Cabinets and Mobile Carts specifically designed for all professional displays
- ADA compliant with UL-listed display mount
- Unique depths for greater space optimization
- Accessible, comfortable, ergonomic display positions for improved productivity and user experience
- Low impact installation - no wall reinforcement, simple toggle bolt installation for anti-tip
- Rapid Global Deployment with standardized, simplified AV solutions that save time and money
- Retrofit-friendly and easily upgradeable





“ We continually seek to deliver the best possible solutions and the highest quality equipment, so partnering with Salamander is a natural for Dell. Salamander premium cabinets, custom designed for Dell products, enable our customers worldwide to make full use of all advantages our short throw projectors provide. ”

-Dimitri Haddeman, Global Launch Manager, Dell

SALAMANDER + DELL WORKING FOR YOU

The Salamander and Dell difference lies in the seamless intersection of premium furniture design with AV technology that makes your projects faster to specify, easier to install and more visually appealing than ever before. Considered the “go to” furniture brand by integrators the world over, Salamander has a 25-year history of delivering high-quality workplace furniture, seating and AV-support structures. When coupled with Dell, there is simply no better integrated system for your projects

#1 Furniture Brand is Designed For You

- 25+ years of providing innovative AV furniture and seating solutions
- #1 furniture brand in CE Pro Analysis - for 14 years in a row
- Premium products manufactured in a 100% solar-powered USA factory
- Uniquely quick-shipped within days
- Backed by unprecedented service and Limited Lifetime Warranty



“ We’re excited about our partnership with Dell. Integrators will benefit from joint training, sales and marketing — and will be able to enjoy quality, turn-key solutions that expertly match Dell technology.”

-Scott Srolis

VP of Sales and Marketing, Salamander Designs

SALAMANDER PRODUCTS FOR **DELL**

The following Salamander products are designed to work with professional displays for quick ordering and rapid deployment. Regardless of your specific application, we offer a range of Cabinets for fixed or variable installations, Mobile Stands for projects requiring movement between spaces, and fully adjustable FPS Stands that can convert to a flat, tabletop configuration. Select from our latest styles, materials, sizes and finishes to suit all your interactive display needs.



Salamander products accommodate the Dell professional displays from 55" to 86", meaning there is a size for every meeting or learning space.



CABINET SOLUTIONS

- Durability and Safety tested. UL Listed Display Mount
- ADA compliant solutions solve "Protrusion and Operable Part reach limits"
- Low Impact Installation - No wall reinforcement, simple toggle bolt installation for anti-tip
- Rapid Global Deployment with standardized/simplified AV solutions that save time and money
- A unique, shallow depth allows for minimal screen providing accessible, comfortable, ergonomic position that improves productivity and user experience
- Full customizable from accessories to look and feel - upgradeable with new style/skin or easy replacement of tops, end-panels and doors as desired.
- Made in America and backed by Limited Lifetime Warranty

CABINETS / LOW PROFILE



**Designed For
Dell Interactive
Monitors**



**Ergonomic -
minimal screen reach**

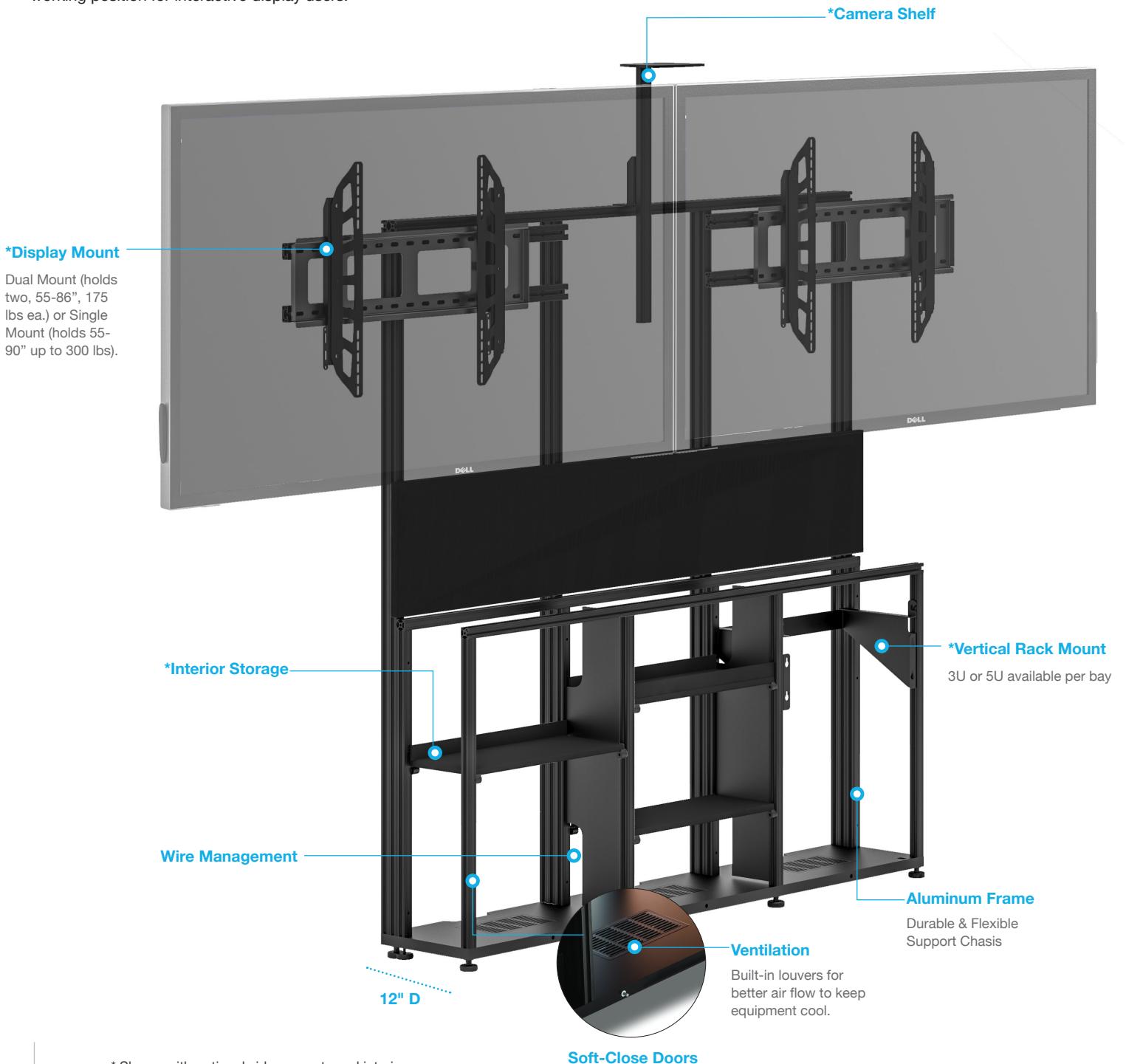


**Wall Mounted -
provides convenience
and frees up floor space**



**ADA
COMPLIANT
SOLUTIONS**

Low-profile, shallow depth cabinets are sleek, streamlined solutions for supporting AV/IT technology. Our innovative design conceals all equipment and cables, and simple installation allows them to be affixed to any wall without special preparation. A unique, shallow depth provides a comfortable working position for interactive display users.



* Shown with optional video mounts and interiors.
Salamander + Dell



**D1/367AM2/
6-Bay, Low-Profile Wall Cabinet
Dual Display***

- Dual Display Mount for 55"-70" Dell™ Interactive Monitors
- Single Camera Shelf
- (8) Adjustable Trays
- (1) 3-U Vertical Rack Rail
- 31.25"H (795mm) x 129.75"W (3296mm) x 12"D (305mm)

* Ships as two cabinets to be mated together.



**D1/347AM2/
4-Bay, Low-Profile Wall Cabinet
Dual Display**

- Dual Display Mount for 55"-70" Dell™ Interactive Monitors
- Single Camera Shelf
- (4) Adjustable Trays
- (1) 3-U Vertical Rack Rail
- 31.25"H (795mm) x 85.5"W (2172mm) x 12"D (305mm)



**D1/337AL/
3-Bay, Low-Profile Wall Cabinet
EZ-Touch Lift Display**

- EZ-Touch Lift Mount for 55" Dell™ Interactive Monitors
- (3) Adjustable Trays
- (1) 3-U Vertical Rack Rail
- 31.25"H (795mm) x 64.75"W (1645mm) x 12"D (305mm)



**D1/347AMXL/
4-Bay, Low-Profile Wall Cabinet
Single XL Display**

- XL Single Display Mount for 70"-86" Dell™ Interactive Monitors
- (4) Adjustable Trays
- (1) 3-U Vertical Rack Rail
- Cisco Sparkboard Adapter Available
- 31.25"H (795mm) x 85.5"W (2172mm) x 12"D (305mm)



**D1/347AM1/
4-Bay, Low-Profile Wall Cabinet
Single Display**

- Single Display Mount for 55"-70" Dell™ Interactive Monitors
- Single Camera Shelf
- (4) Adjustable Trays
- (1) 3-U Vertical Rack Rail
- 31.25"H (795mm) x 85.5"W (2172mm) x 12"D (305mm)



**D1/337AM1/
3-Bay, Low-Profile Wall Cabinet
Single Display**

- Single Display Mount for 55"-70" Dell™ Interactive Monitors
- Single Camera Shelf
- (3) Adjustable Trays
- (1) 3-U Vertical Rack Rail
- 31.25"H (795mm) x 64.75"W (1645mm) x 12"D (305mm)

CABINETS / STANDARD PROFILE



**Designed For
Integrated AV/IT**



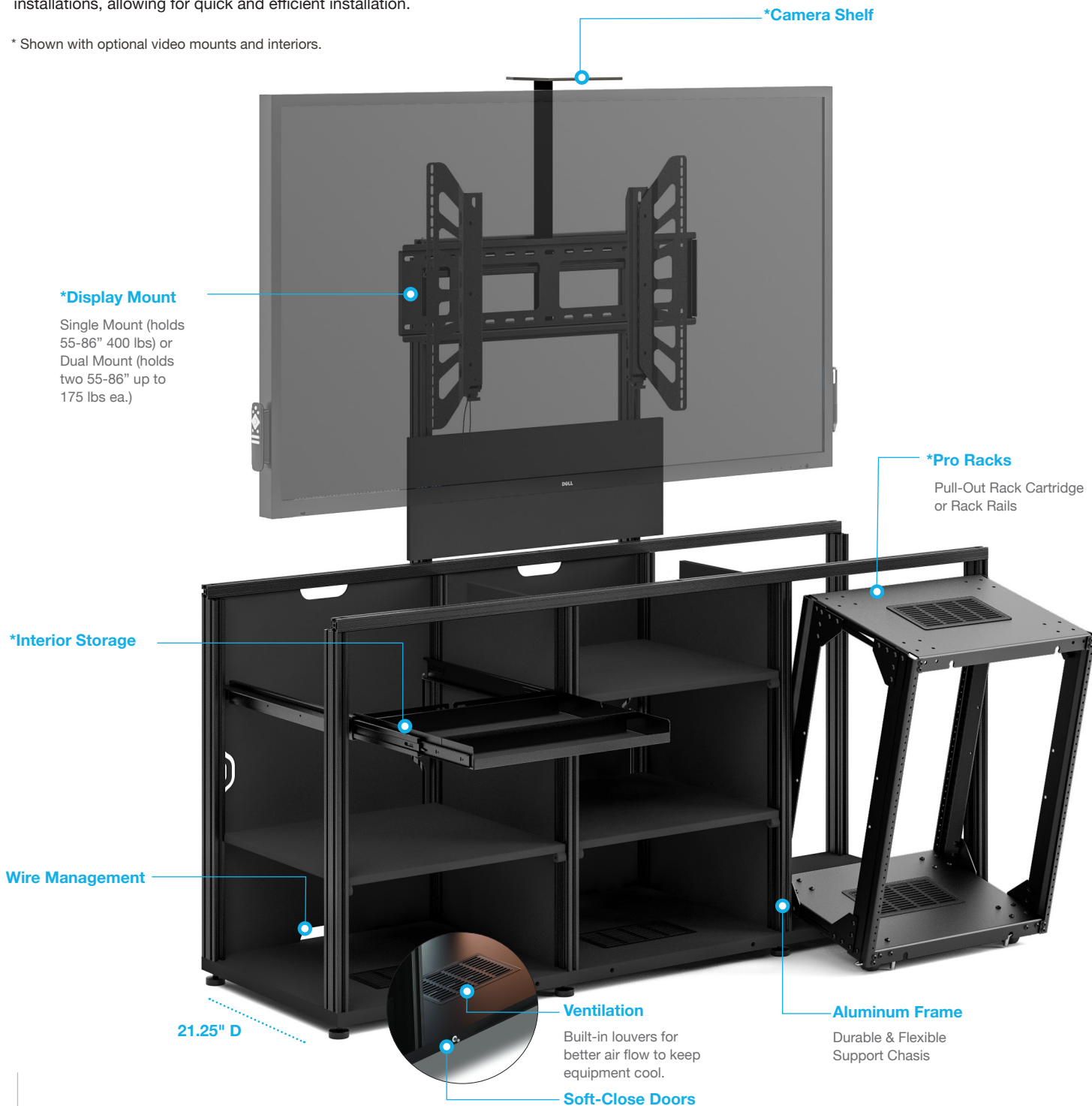
**Robust,
Large-Capacity**



**Low Impact
Installation**

Designed for Fully Integrated Technologies. These robust, large-capacity cabinet systems house all electronics, including integrated support for AV/IT systems. Freestanding and fully integrated cabinets are perfect for retrofit installations, allowing for quick and efficient installation.

* Shown with optional video mounts and interiors.





D2/367BM2/

6-Bay, Standard Profile Cabinet Dual Display*

- Dual Display Mount for 55"-70 Dell™ Interactive Monitors
- Single Camera Shelf
- (1) Pull-Out Storage Tray
- (7) Adjustable Shelves
- (1) 13-U Pull-Out Rack Cartridge
- (5) Removable Rear Panels
- (1) Active Cooling Rear Panel
- 31.25"H (795mm) x 129.75"W (3296mm)



D2/347BM2/

4-Bay, Standard Profile Cabinet Dual Display

- Dual Display Mount for 55"-70 Dell™ Interactive Monitors
- Single Camera Shelf
- (1) Pull-Out Storage Tray
- (5) Adjustable Shelves
- (1) 13-U Pull-Out Rack Cartridge
- (3) Removable Rear Panels
- (1) Active Cooling Rear Panel



D2/337BM2/

3-Bay, Standard Profile Cabinet Dual Display

- Dual Display Mount for 55"-70 Dell™ Interactive Monitors
- Single Camera Shelf
- (3) Pull-Out Storage Tray
- (7) Adjustable Shelves
- (1) 13-U Pull-Out Rack Cartridge
- (2) Removable Rear Panels
- (1) Active Cooling Rear Panel
- 31.25"H (795mm) x 64.75"W (1645mm)



D2/347BM1/

4-Bay, Standard Profile Cabinet Single Display

- Single Display Mount for 55"-70 Dell™ Interactive Monitors
- Single Camera Shelf
- (1) Pull-Out Storage Tray
- (5) Adjustable Shelves
- (1) 13-U Pull-Out Rack Cartridge
- (3) Removable Rear Panels
- (1) Active Cooling Rear Panel
- 31.25"H (795mm) x 85.5"W (2172mm)



D2/347AMXL/

4-Bay, Standard Profile Cabinet XL Single Display

- Single Display Mount for 70"-86 Dell™ Interactive Monitors
- Single Camera Shelf
- (1) Pull-Out Storage Tray
- (5) Adjustable Shelves
- (1) 13-U Pull-Out Rack Cartridge
- (3) Removable Rear Panels
- (1) Active Cooling Rear Panel
- 31.25"H (795mm) x 85.5"W (2172mm)



D2/337BM1/

3-Bay, Standard Profile Cabinet Single Display

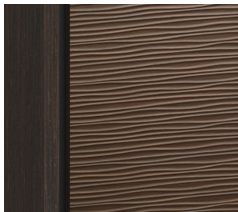
- Single Display Mount for 55"-70 Dell™ Interactive Monitors
- Single Camera Shelf
- (1) Pull-Out Storage Tray
- (3) Adjustable Shelves
- (1) 13-U Pull-Out Rack Cartridge
- (2) Removable Rear Panels
- (1) Active Cooling Rear Panel
- 31.25"H (795mm) x 64.75"W (1645mm)

CABINETS / STYLES



*All styles come standard with leveler feet.

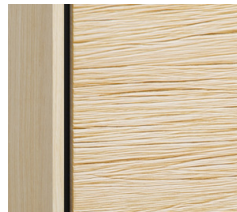
We select the finest materials and finishes. Choose from sleek, hand-polished, high-gloss finishes to richly textured real wood fronts or a contemporary beveled edge style with a mix of materials. If you are looking for **something different or special**, please **contact us to discuss custom options**.



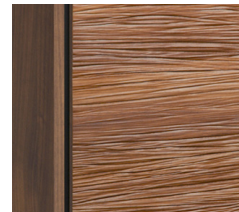
BERLIN*
Wenge,
Wave-Texture Doors



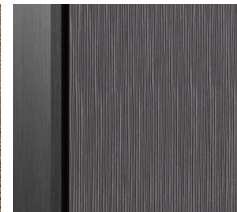
CHICAGO*
Black Oak,
Grass-Textured Doors



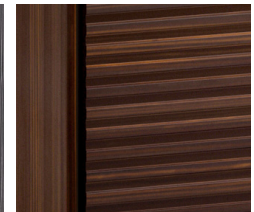
DENVER – OAK*
Natural Oak,
Bark-Textured Doors



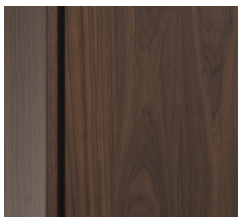
DENVER – WALNUT*
Medium Walnut,
Bark-Textured Doors



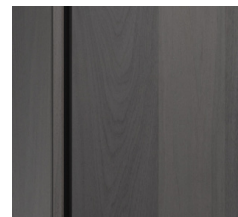
SEATTLE*
Gray Oak,
Bark-Textured Doors



ZURICH*
Opium Brown,
Linear Texture Doors



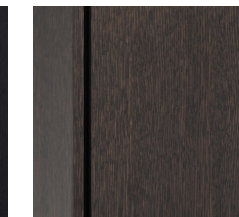
SIENNA*
Medium Walnut,
Flat-Front
Wood Doors



SIENNA*
Gray Walnut,
Flat-Front
Wood Doors



SIENNA*
Black Oak,
Flat-Front
Wood Doors



SIENNA*
Wenge Oak,
Flat-Front
Wood Doors



SIENNA*
Natural Oak,
Flat-Front
Wood Doors

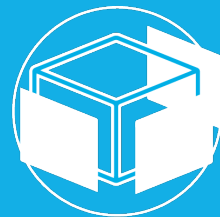


MILAN*
Dimensional, Diamond
Pattern, White



MIAMI*
Gloss Warm White

**Barcelona Style only available in standard profile.



Build Your Own
Fabricate Your own skins.
Custom Millwork
Specifications Available

***Custom Finish Matching**
Match your finishes using our
in-house finishing department.

*Minimum orders, engineering charges and lead times may apply.



MOBILE STANDS



ELECTRIC LIFT



FIXED HEIGHT

DISPLAY STANDS / ELECTRIC LIFT



Designed For Dell™ Interactive Monitors



Ergonomic Minimal Screen Reach



ADA COMPLIANT SOLUTIONS



LISTED

Large Handles and a wide stance provide superior stability and maneuverability



Fully Adjustable Motor Control improves user experience and productivity for any size user for any work assignment

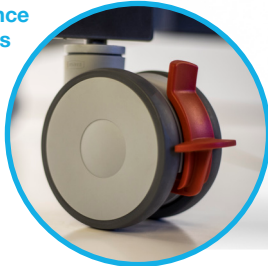
Wire Management allows for clean and uncluttered installation



* ADA COMPLIANT

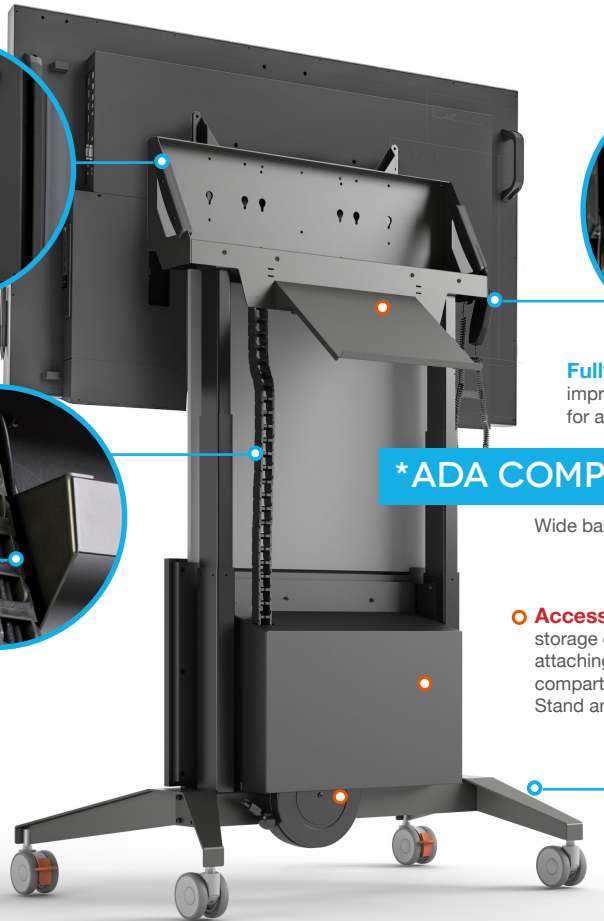
Wide base stance allows convenient accessibility

High Performance Locking Casters provide smooth transport over any surface



Accessories include a retractable cable reel, storage compartment for rack mounted gear, rear attaching shelf for laptops and keyboards, a storage compartment cover, and even road cases for the Stand and display attached.

Compact, Telescoping Design minimizes storage and transport requirements



ROAD CASE EQUIPMENT FOR EASY DEPLOYMENT



Combine a mobile stand with a road case to provide secure and convenient transport of your display.



DISPLAY STANDS / ELECTRIC LIFT



FPS1XL/EL/GG XL Electric Lift Mobile Stand

Stand for 70" & 86" Dell™
Interactive Monitors

VESA Compliant:
Horizontal: 400, 600, 800, 1000, 1200mm
Vertical: 400, 500, 600mm

Export Model: FPS1XL/EL/GG/EX

FPS2/EL/GG Electric Lift Mobile Stand

Stand for 55"-70" Dell™
Interactive Monitors

VESA Compliant:
Horizontal: 200, 300, 400, 600mm
Vertical: 200, 300, 400mm

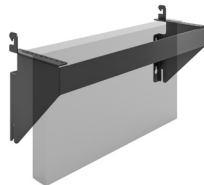
Export Model: FPS2/EL/GG/EX

ACCESSORIES

**Electronics Sold Separately*



Keyboard
Storage Shelf*
FPSA/KS/GT



Rack Mounting
Equipment Bracket, 3RU*
FPSA/VR/3U



Retractable Power
Cable Reel - USA Only
FPSA/CR



Retractable CAT6
Cable Reel
FPSA/CR/CAT6



Power Distribution Unit,
9 Outlets - USA Only
SA/RM/PDU



Secure Equipment
Storage Cover
FPSA/SC/GT



Small Shelf with
Mounting Straps*
FPSA/AS1



Wireless Remote
Control with Memory
FPSA/RF1



Tech Bracket*
FPSA/SBK



Tech Shelf*
FPSA/CS

DISPLAY STANDS / FIXED HEIGHT



Designed For
Dell™ Interactive
Monitors



Ergonomic
Minimal Screen Reach



ADA
COMPLIANT
SOLUTIONS

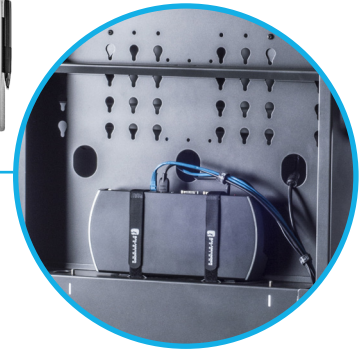
**Adjustable
Height Position**
set during assembly

Large Handles
provide superior
stability and
maneuverability

Secure Rear Panels
allow for easy access to
concealed storage with
strap mounted peripherals



2RU Vertical Rack
with interior cable
management



External Storage
Cubby on front or rear
(depending on model)



Vents allows for
airflow of peripherals

**Premium
Casters**
provide smooth
transport over
any surface

Accessories include a
retractable cable reel, rear
attaching shelf for laptops
and keyboards, speaker
mount and camera shelf



DISPLAY STANDS / FIXED HEIGHT

Fixed height, mobile stands were designed to meet your needs, these stands deliver sleek design, functionality and mobility.



FPS1XL/FH/GG
XL Fixed Height Mobile Stand

Stand for 70" & 86" Dell™
 Interactive Monitors

VESA Compliant:
 Horizontal: 400, 600, 800, 1000, 1200mm
 Vertical: 400, 500, 600mm



FPS1/FH/GG
Fixed Height Mobile Stand

Stand for 55" Dell™
 Interactive Monitors

VESA Compliant:
 Horizontal: 200, 300, 400, 600mm
 Vertical: 200, 300, 400mm

ACCESSORIES

**Electronics Sold Separately*



Keyboard Storage Shelf*
FPSA/KS/GT



**Retractable Power
 Cable Reel - USA Only**
FPSA/CR



**Power Distribution Unit,
 9 Outlets - USA Only**
SA/RM/PDU



Tech Bracket*
FPSA/SBK



Tech Shelf*
FPSA/CS

ON-WALL SOLUTIONS



WALL STAND / ELECTRIC LIFT



FPS2W/EL/GG Electric Lift Wall Stand

Stand for 70" & 86" Dell™
Interactive Monitors

VESA Compliant:
Horizontal 200 - 8000mm
Vertical 200 - 500mm

Range of Travel: Min 34" (836mm) - Max 59.6" (1513mm)

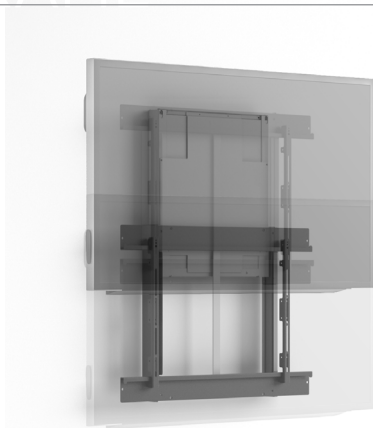


ACCESSORIES



Wireless Remote
Control with Memory
FPSA/RF1

WALL MOUNT / MANUAL ASSIST LIFT

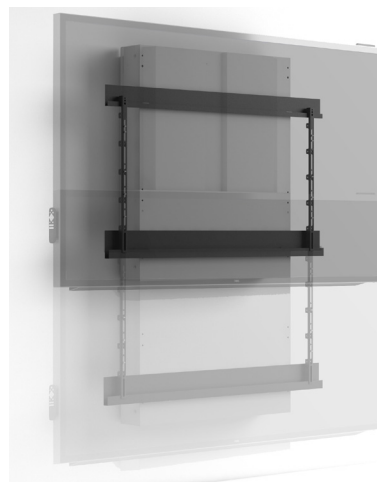


EZ1/ML145 EZ Touch Wall Mount Manual Assist Lift

Range of Travel 15.75" (400mm)

Stand for 55"-70" Dell™
Interactive Monitors

VESA Compliant:
Horizontal 200 - 800mm
Vertical 100 - 440mm



EZ1/ML360 EZ Touch Wall Mount Manual Assist Lift

Range of Travel 25.6" (650mm)

Stand for 55"-86" Dell™
Interactive Monitors

VESA Compliant:
Horizontal 1200mm
Vertical 600mm

Compatible Salamander Designs + Dell Interactive Monitors

DELL P/N	SALAMANDER P/N	C5522QT	C8621QT	E5515H (ASIA ONLY)	C5519Q	C7520QT	C6522QT
CABINETS – LOW PROFILE							
	D1/337AML/	.					.
	D1/337AM1/
	D1/337AM2/
	D1/347AM1/
	D1/347AM2/
	D1/347AMXL		.			.	
	D1/367AM2/
CABINETS – STANDARD PROFILE							
	D2/337BM1/
	D2/337BM2/
	D2/347BM1/
	D2/347BM2/
	D2/347AMXL/		.			.	
	D2/367BM2/
DISPLAY STANDS							
AA285245	FPS1/EL/GG/Export/International
	FPS2/EL/GG/Export/International				.	.	
AA285246	FPS1XL/EL/GG/Export/International	.	.			.	
AA486524	FPS1/FH/GG	.			.	.	
AA285256	FPS1XL/FH/GG	.	.			.	
AA885315	FPS1/ELT/GG/Export/International
	FPS2/ELT/GG/Export/International				.		
ON WALL SOLUTIONS							
AA882184	FPS1W/EL/GG/Export/International
	FPS2W/EL/GG/Export/International				.	.	
	EZ1/ML145	.					.
	EZ1/ML360						

WE ALSO CUSTOMIZE

Salamander also offers Dell customers/clients virtually unlimited design possibilities and consultation. For more information on custom options, email dell@salamanderdesign.com or visit SalamanderDesigns.com/Commercial/Partners/Dell/



Virtually unlimited custom design options

Design Your Own

Customizable cabinet shaped by your needs in 5 easy steps

Build Your Own

Fabricate your own skins.
Custom Millwork Specifications Available

Branding

Personalize Display Stands with your logo or full-wrap graphic.

Mix & Match Panels

Swap doors, sides, and tops from our stock finishes to create your own look.

*Custom Finish Matching

Match your finishes using our in-house finishing department.

*Custom Sizes

SALAMANDER + DELL WORKING FOR YOU

We welcome the opportunity to speak with you about how we can bring together elegant workplace display technology and premium AV furniture for you. For more information, please contact us.



SALAMANDER DESIGNS

www.salamandercommercial.com/partners/dell

dell@salamanderdesigns.com



Dell.com