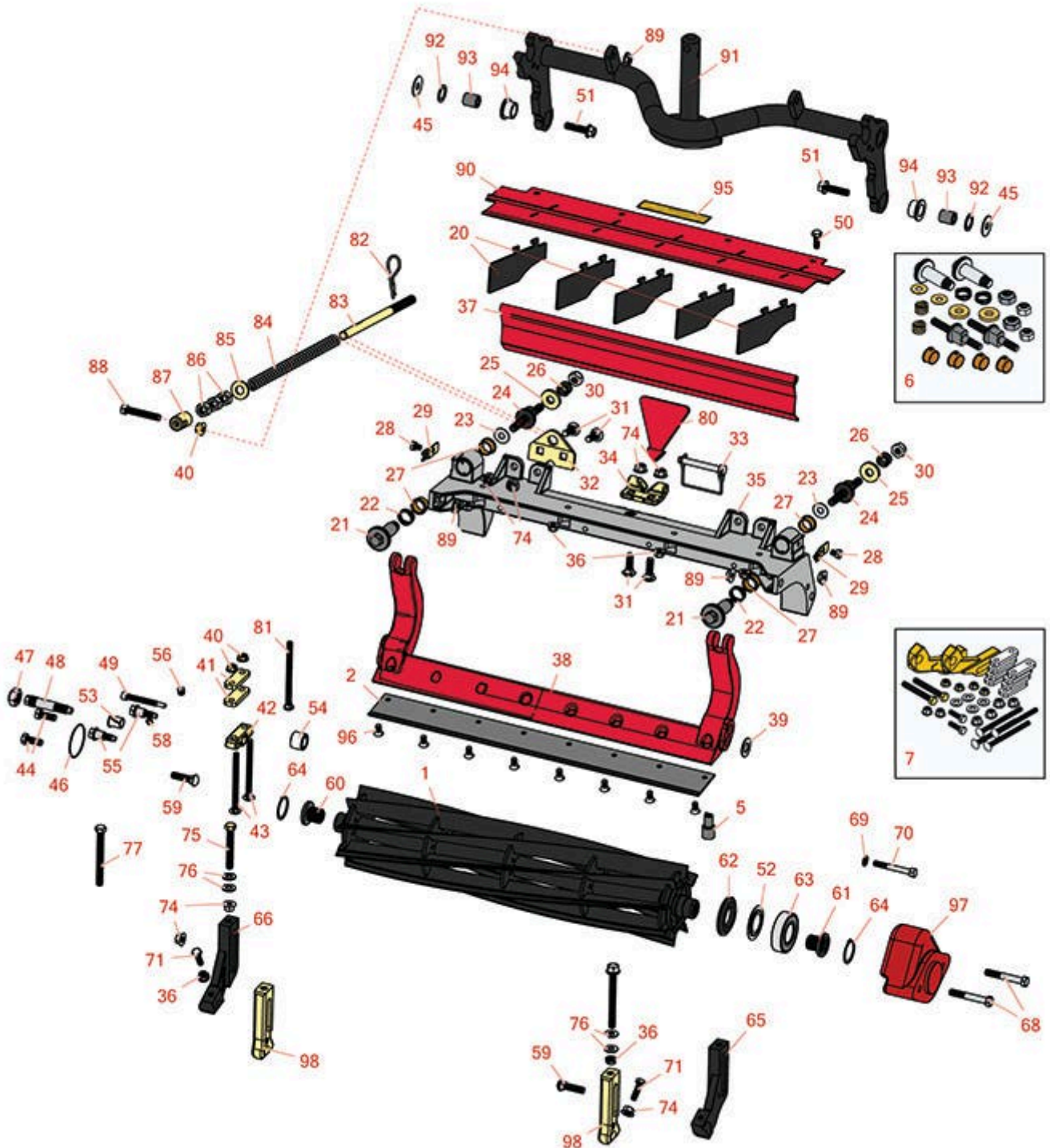




# Replaces Toro Reelmaster 5010-H Parts

Cutting Unit with 5" Reels - Models 03621, 03623, 03634 & 03635

Reel & Bedknife



All original equipment manufacturers names and part numbers are used for identification purposes only, and we are in no way implying that our products are original equipment parts. Prices subject to change without notice.



# Replaces Toro Reelmaster 5010-H Parts

Cutting Unit with 5" Reels - Models 03621, 03623, 03634 & 03635

Reel & Bedknife



Item No	R&R Part No.	OEM Part No.	Description	Qty Req	Price Each	Order Quantity
<b>R&amp;R Reels, Lifetime Guaranteed</b>						
1	<b>R131-3203</b>	131-3203	Reel - 8 Blade Radial w/Bearings and Seals 22x5	1	<b>338.90</b>	
1	<b>R132-7109</b>	132-7109	Reel - 8 Blade Razor Series Radial w/Bearings and Seals 22x5	1	<b>362.20</b>	
<i>Tech Note: Uses special high alloy premium steel reel blades:</i>						
1	<b>R137-8426</b>	137-8426	Reel - 8 Blade Razor Radial w/Bearings and Seals 22x5	1	<b>361.95</b>	
<i>Tech Note: Uses special high alloy premium steel reel blades:</i>						
1	<b>R131-3204</b>	131-3204	Reel - 11 Blade Radial w/Bearings and Seals 22x5	1	<b>364.50</b>	
1	<b>R132-7112</b>	132-7112	Reel - 11 Blade Razor Series Forward Swept w/Bearings and Seals 22x5	1	<b>387.60</b>	
<i>Tech Note: Uses special high alloy premium steel reel blades:</i>						
1	<b>R137-8427</b>	137-8427	Reel - 11 Blade Razor Series Forward Swept Low Drag w/Bearings and Seals 22x5	1	<b>364.25</b>	
<i>Tech Note: Uses special high alloy premium steel reel blades:</i>						
1	<b>R137-8429</b>	137-8429	Reel - 11 Blade Razor Series Radial w/Bearings and Seals 22x5	1	<b>387.65</b>	
<i>Tech Note: Uses special high alloy premium steel reel blades:</i>						
<b>R&amp;R Bedknife, Lifetime Guaranteed</b>						
2	<b>R110-4084</b>	110-4084	Bedknife - Low Cut	1	<b>44.75</b>	
2	<b>R137-0832</b>	125-2771, 127-7132, 137-0832	Bedknife - Razor Tool Steel 3/8 x 22 Lowcut	1	<b>99.75</b>	

All original equipment manufacturers names and part numbers are used for identification purposes only, and we are in no way implying that our products are original equipment parts. Prices subject to change without notice.



# Replaces Toro Reelmaster 5010-H Parts

Cutting Unit with 5" Reels - Models 03621, 03623, 03634 & 03635

Reel & Bedknife



Item No	R&R Part No.	OEM Part No.	Description	Qty Req	Price Each	Order Quantity
2	<b>R108-9096</b>	108-9096	Bedknife - Standard	1	<b>44.65</b>	
2	<b>R110-4074</b>	110-4074	Bedknife - High Cut	1	<b>44.55</b>	
2	<b>R120-1640</b>	120-1640	Bedknife - Low Cut Extended	1	<b>46.90</b>	

## R&R Razor tool Steel Bedknife, Lifetime Guaranteed

2	<b>R108-9095</b>	108-9095, 137-0833	Bedknife - Razor Tool Steel - 22 High Cut	1	<b>97.55</b>	
2	<b>R119-4280</b>	119-4280	Bedknife - Razor Tool Steel - 22 x 3/8 Extended	1	<b>99.75</b>	

## Overhaul Kit and Service Tools

5	<b>R51-0880</b>	51-0880	Bedknife Screw Driver Tool	1	<b>35.65</b>	
6	<b>R120-7230</b>	120-7230	Overhaul Kit - Fits DPA Units	1	<b>180.50</b>	

*Tech Note: Incl 2 ea.: R108-0015, R115-7039, R119-4155, R120-5116, R120-5118, R120-5120, R3296-33, R3296-48 & 4 ea: R106-5344:*

7	<b>R110-9600</b>	110-9600	High HOC Kit	1	<b>162.75</b>	
---	------------------	----------	--------------	---	---------------	--

*Tech Note: Includes 1 ea.: R120-0404, R120-0405 & 2 ea: R112-7451, R322-16, R445722 & 4 ea.: R106-9758, R104-8300, R453011, R104-8301 & 8 ea: R106-3925:*

## Other Parts Available

20	<b>R110-1706</b>	110-1706	Deflector	5	<b>3.40</b>	
21	<b>R120-5118</b>	120-5118	Shaft - Adjuster	2	<b>31.05</b>	
22	<b>R120-5116</b>	120-5116	Washer - Wave	2	<b>6.90</b>	
23	<b>R108-0015</b>	108-0015	Washer - Flat	2	<b>1.20</b>	
24	<b>R115-7039</b>	115-7039	Screw - Adjuster - Bedbar	2	<b>29.85</b>	

All original equipment manufacturers names and part numbers are used for identification purposes only, and we are in no way implying that our products are original equipment parts. Prices subject to change without notice.



# Replaces Toro Reelmaster 5010-H Parts

Cutting Unit with 5" Reels - Models 03621, 03623, 03634 & 03635

Reel & Bedknife



Item No	R&R Part No.	OEM Part No.	Description	Qty Req	Price Each	Order Quantity
<i>Tech Note: Ser# 400000000-405699999:</i>						
24	<b>R137-6130</b>	137-6130	Screw - Adjuster - Hardened - Bedbar	2	<b>34.85</b>	
<i>Tech Note: Ser# 405700000-410499999:</i>						
25	<b>R119-4155</b>	119-4155	Washer - Hardened	2	<b>7.50</b>	
26	<b>R120-5120</b>	120-5120	Spring - Compression	2	<b>2.35</b>	
27	<b>R106-5344</b>	106-5344	Bushing - Flanged and Keyed	4	<b>5.05</b>	
28	<b>R114-9396</b>	114-9396, 119-4067	Bolt - Hex HD 5/16-18 x 3/8	2	<b>1.45</b>	
29	<b>R99-2097</b>	99-2097	Detent - Bed Bar Adjuster	2	<b>8.75</b>	
30	<b>R3296-48</b>	119-4039, 32146-7, 3296-34, 3296-48	Locknut - 7/16-14 ESNA	2	<b>0.55</b>	
31	<b>R3231-25</b>	01-173-0610, 30-9970, 3231-25, 3231-3, 900064P	Bolt - Carriage 3/8-16 x 1-1/4	4	<b>0.66</b>	
32	<b>R110-4069</b>	110-4069	Bracket	1	<b>7.05</b>	
33	<b>R107-7400</b>	107-7400	Pin - Lynch	1	<b>6.95</b>	
34	<b>R110-4058</b>	110-4058	Bracket - Chain	1	<b>19.40</b>	
35	<b>R107-2951</b>	107-2951	Frame	1	<b>136.25</b>	
36	<b>R445722</b>	30-8980, 32128-2, 32128-20, 32128-20, 445722	Nut - Serrated Washer	5	<b>0.66</b>	

All original equipment manufacturers names and part numbers are used for identification purposes only, and we are in no way implying that our products are original equipment parts. Prices subject to change without notice.



# Replaces Toro Reelmaster 5010-H Parts

Cutting Unit with 5" Reels - Models 03621, 03623, 03634 & 03635

Reel & Bedknife



Item No	R&R Part No.	OEM Part No.	Description	Qty Req	Price Each	Order Quantity
38	<b>R105-8095-01</b>	105-8095-01	Bed Bar - Fits OEM Units Only	1	<b>283.35</b>	
39	<b>R61-1950</b>	61-1950	Washer - Nylon - Bed Bar	4	<b>0.64</b>	
40	<b>R104-8300</b>	104-8300, 104-8300 , 119-4041	Locknut - 5/16-18 Flanged Y/Zinc	4	<b>0.47</b>	
41	<b>R119-0626</b>	119-0626	Shim - Roller - 1/4 in - Slotted	8	<b>5.45</b>	
42	<b>R106-3924</b>	106-3924	Bracket - Rear Roller	2	<b>15.70</b>	
43	<b>R106-9758</b>		Bolt - Carriage 5/16x4	4	<b>1.55</b>	
44	<b>R3234-11</b>	3234-11	Bolt - Hex Washer HD	4	<b>1.05</b>	
45	<b>R130-8094</b>	130-8094	Washer	2	<b>4.70</b>	
46	<b>R237-68</b>	237-68	O-Ring	2	<b>2.45</b>	
46	<b>R117-8177</b>	117-8177	O-Ring	2	<b>2.45</b>	
47	<b>R3296-33</b>	3296-33	Locknut - 5/8-18 ESNA Jam	1	<b>1.30</b>	
48	<b>R106-9623</b>	106-9623	Bolt - Bedbar	2	<b>14.15</b>	
49	<b>R107-7773</b>	107-7773	Bolt - Soc HD Cap 5/16-18 x 2-1/2	1	<b>7.50</b>	
50	<b>R3234-7</b>	3234-7	Bolt - Hex Washer HD 5/16-18 x 5/8	4	<b>1.30</b>	
51	<b>R3234-19</b>	3234-19	Bolt - Hex Washer 3/8-16x1-3/4	2	<b>1.75</b>	
52	<b>R115-3299</b>	115-3299	Seal- Flocked	2	<b>11.40</b>	
53	<b>R56-9520</b>	56-9520	Bushing - Nyliner	2	<b>1.55</b>	
54	<b>R106-9618</b>	106-9618	Bushing - Rubber	2	<b>7.90</b>	
55	<b>R107-2979</b>	107-2979	Bolt - Shoulder	4	<b>3.25</b>	

All original equipment manufacturers names and part numbers are used for identification purposes only, and we are in no way implying that our products are original equipment parts. Prices subject to change without notice.



# Replaces Toro Reelmaster 5010-H Parts

Cutting Unit with 5" Reels - Models 03621, 03623, 03634 & 03635

Reel & Bedknife



Item No	R&R Part No.	OEM Part No.	Description	Qty Req	Price Each	Order Quantity
56	<b>R170714</b>	302-34, 302-39, 62-3520	Fitting - Pressure Relief	2	<b>2.25</b>	
57	<b>R125-2098</b>	125-2098	Grass Shield - Rear 22" Unit	1	<b>50.99</b>	
58	<b>R302-5</b>	21-6010, 302-11, 302-37, 302-47, 302-5, 302-57, 302-58, 302-6, 31-0300, 32-9660, 60-0800, 62-3880, 92-4181	Fitting - Grease	1	<b>0.27</b>	
59	<b>R3231-4</b>	01-157-0440, 01-173-0612, 3231-4	Bolt - Carriage 3/8-16 x 1-1/2	2	<b>1.20</b>	
60	<b>R130-0063</b>	130-0063	Insert-Threaded, 5 Inch (RH)	1	<b>26.80</b>	
61	<b>R130-0064</b>	130-0064	Insert-Threaded, 5 Inch (LH)	1	<b>26.80</b>	
62	<b>R127-4284</b>	127-4284	Washer - Special	2	<b>3.85</b>	
63	<b>R115-3296</b>	115-3296	Bearing	2	<b>23.50</b>	
<i>Tech Note: Ser# 400000000-407999999:</i>						
63	<b>R140-5510</b>	140-5510	Bearing - Sealed Stainless	2	<b>21.34</b>	
<i>Tech Note: Ser# 408000000-410499999:</i>						
64	<b>R92-2601</b>	92-2601	Snap Ring	2	<b>2.45</b>	
65	<b>R120-0404</b>	120-0404	Bracket- High HOC - LH	1	<b>53.80</b>	
<i>Tech Note: Fits 2011 &amp; Newer:</i>						

All original equipment manufacturers names and part numbers are used for identification purposes only, and we are in no way implying that our products are original equipment parts. Prices subject to change without notice.



# Replaces Toro Reelmaster 5010-H Parts

Cutting Unit with 5" Reels - Models 03621, 03623, 03634 & 03635

Reel & Bedknife



Item No	R&R Part No.	OEM Part No.	Description	Qty Req	Price Each	Order Quantity
66	<b>R120-0405</b>	120-0405	Bracket - High HOC - RH	1	<b>53.80</b>	
<i>Tech Note: Fits 2011 &amp; Newer:</i>						
68	<b>R101526</b>	01-150-0970, 01-178-0620, 101526, 20-53-AGD, 321-11, 3224-8, 323-11, 323-12, 323-31, 323-4, 323-47	Bolt - Hex HD 3/8-16 x 2-1/2 GR5	10	<b>0.91</b>	
69	<b>R3256-74</b>	3256-74	Washer - Flat	1	<b>0.65</b>	
70	<b>R322-14</b>	01-150-0830, 01-178-0524, 30-8900, 322-14	Bolt - Hex HD 5/16-18 x 3 GR5	1	<b>2.15</b>	
71	<b>R322-16</b>	322-16, Apr-00	Bolt - Hex HD 5/16-18 x 1-1/8	2	<b>1.65</b>	
74	<b>R104-8301</b>	104-8301, 104-9301, 109-6658, 133-7570	Locknut - 3/8-16 Nylon Flanged	7	<b>0.84</b>	
75	<b>R112-7451</b>	100-9429, 112-7451	Bolt - Hex Tap 3/8-16 x 2-3/4	2	<b>1.95</b>	

All original equipment manufacturers names and part numbers are used for identification purposes only, and we are in no way implying that our products are original equipment parts. Prices subject to change without notice.



# Replaces Toro Reelmaster 5010-H Parts

Cutting Unit with 5" Reels - Models 03621, 03623, 03634 & 03635

Reel & Bedknife



Item No	R&R Part No.	OEM Part No.	Description	Qty Req	Price Each	Order Quantity
76	<b>R453011</b>	01-166-0100, 01-166-0120, 01-166-0270, 01-166-0500, 01-166-0600, 01-166-0620, 132-4593, 2356-3, 237-12, 24-10-AD, 24-11-AD, 24-11-BD, 24-12-AD, 24-12-BD, 30-9310, 32-8190, 3256-24, 3256-3, 3256-36, 3256-4, 453011, 47-9950, 48-9220, 513458, 7-0052	Washer - Flat 3/8 SAE Y/Zinc	4	<b>0.11</b>	
77	<b>R107-4026</b>	107-4026	Bolt - Hex Tap 3/8-16 x 3-3/4	2	<b>6.25</b>	
80	<b>R110-4088-03</b>	110-4088-03, 119-8010-03	Kickstand	1	<b>21.25</b>	
81	<b>R3230-30</b>	3230-30	Bolt - Carriage 5/16x4 1/2	4	<b>6.30</b>	
82	<b>R92-2762</b>	92-2762	Pin - Snap	1	<b>1.50</b>	
83	<b>R107-2970</b>	107-2970	Rod - Spring	1	<b>23.45</b>	
84	<b>R112-1725</b>	112-1725	Spring - Compression	1	<b>11.50</b>	
85	<b>R87-7270-01</b>	87-7270, 87-7270-01	Washer - Flat 1/2	1	<b>0.29</b>	

All original equipment manufacturers names and part numbers are used for identification purposes only, and we are in no way implying that our products are original equipment parts. Prices subject to change without notice.





# Replaces Toro Reelmaster 5010-H Parts

Cutting Unit with 5" Reels - Models 03621, 03623, 03634 & 03635

Reel & Bedknife



Item No	R&R Part No.	OEM Part No.	Description	Qty Req	Price Each	Order Quantity
86	<b>R443818</b>	01-191-0813, 3218-18, 3218-5, 3248-18	Nut - 1/2-13 Hex Jam Zinc	3	<b>0.35</b>	
87	<b>R99-8662</b>	99-8662	Tube - Spring	1	<b>11.55</b>	
88	<b>R104-3396</b>	104-3396	Bolt - Hex HD 3/8-16 x 2-1/4	1	<b>1.55</b>	
89	<b>R32128-43</b>	30-8990, 32128-43, 3290-357	Nut - Flanged Whiz - 3/8-16	5	<b>0.62</b>	
90	<b>R107-2996</b>	107-2996	Grass Shield - Front	1	<b>29.40</b>	
91	<b>R106-3937</b>	106-3937	Carrier Frame Assy	1	<b>282.65</b>	
92	<b>R67-9410</b>	67-9410	Washer - Clevis Pin	1	<b>1.55</b>	
93	<b>R108-4279</b>	108-4279	Spacer - Frame	2	<b>6.75</b>	
94	<b>R93-2877</b>	93-2877	Bushing - Flanged	2	<b>3.65</b>	
95	<b>R93-6688</b>	93-6688	Decal - Warning	1	<b>2.30</b>	
96	<b>R150476</b>	3-3816, 3-6462, 52-4910, 57-4910	Screw - Bedknife 5/16-18 x 5/8	8	<b>0.29</b>	
97	<b>R108-9090-01</b>	108-9090-01	Weight	5	<b>59.10</b>	
98	<b>R125-2796</b>	125-2796	Bracket- Front HOC	2	<b>36.60</b>	

*Tech Note: Fits 2013 & Newer:*

All original equipment manufacturers names and part numbers are used for identification purposes only, and we are in no way implying that our products are original equipment parts. Prices subject to change without notice.