

Give businesses the competitive edge

HP MFP, printer and scanner portfolio



Companies are rethinking the role of printing within their organisations and the value it brings to their workforce, no matter where they work. Understanding how printing facilitates efficiency, organisation and transmission of information can help inform strategic print transformation. Well-thought-out strategies can help to create more resilient workflows and ultimately help companies optimise how they meet the needs of their workforce.

HP offers a broad portfolio of hardware, software, solutions and services to organisations of all sizes and with varying needs. Our smart products and predictive services enable you to focus on your business rather than on your print environment.



HP Wolf Security

HP continues to lead in print security¹

HP business printers, from Pro to Enterprise, can automatically detect and stop an attack (and notify your system of potential trouble) in every phase of operation:



HP Sure Start

During startup, HP Sure Start validates the integrity of the boot code (for Pro devices) or BIOS (for Enterprise devices) - helping to safeguard your device from attack.

Memory Shield™

During run-time operations, run-time intrusion detection with Memory Shield active system monitoring: automatically self-heals if memory is compromised and protects from zero-day attacks (known or unknown).

HP Connection Inspector

When connecting to the network, HP Connection Inspector inspects outgoing network connections to stop malware from "calling home" to malicious servers (Enterprise only).

Whitelisting

When loading firmware, whitelisting helps to ensure that only authentic, good code digitally signed by HP is loaded.

HP Enterprise printers help to defend your network with layer after layer of hardened security atop the world's most secure printers.¹

HP Security Manager lets you monitor, manage and automatically restore critical settings that make maintaining compliance simple – strengthening your security posture and creating consistency across your entire fleet of devices.²

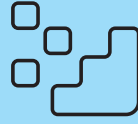


Protect the device

Self-healing security features automatically detect and block attacks.

Built-in encryption helps protect sensitive business information.

Upgradeable firmware helps protect the investment.



Protect the data

End-to-end encryption helps protect sensitive data at every step of a document's journey.

Print Security Health Check verifies the destination print device is safe before sending sensitive documents.

Document digital rights management (DRM) controls how identity-bound data is viewable to licensed users.



Protect the document

HP pull-print solutions help reduce unclaimed print jobs, protect confidential documents and improve efficiency.

Data loss prevention interrupts the print stream when company policies aren't being followed.



66%

More than 2/3 of organisations reported at least one print-related data loss in the last 12 months



USD 6.8 M

The average cost of a data breach is over USD6.8 million

Focus on results

When it comes to business, the more cost effective and efficient something is, the better. HP Document and Workflow Solutions³ can help improve productivity and drive down costs, enabling employees and your IT team to work more efficiently.



Management and security

Centrally control your fleet of printers, scanners and MFPs. Manage costs more effectively using versatile and powerful HP solutions. Expertly monitor, manage, update and troubleshoot devices while saving IT time and budget.



HP Web Jetadmin⁴

Lets you expertly install, configure, troubleshoot and manage your printing fleet. Deliver industry-leading, web-based management with a free tool that's fast, easy and reliable.



HP Security Manager²

Allows you to take control of your fleet, improve compliance and streamline security monitoring and management. Easily secure new and existing devices across your organisation with the industry's first policy-based imaging and printing compliance solution.



HP Secure Print and Insights⁵

Helps to increase the security and control of your print environment by only releasing documents to authorised users. This cloud-based solution holds print jobs in a protected queue until users are authenticated. Unprinted jobs are automatically deleted based on your company's expiry policy.



HP Access Control Print

Makes it easy to control user access and collect data to help transform printing practices. It also helps reduce cost and eliminate unclaimed documents, making your print environment more secure and efficient.

Mobility

Make wireless printing simple and secure using HP solutions designed to work seamlessly with most smartphones, tablets and notebooks at the office or on the move.⁶ Enable users to print wirelessly in the office without connecting to the company network.



HP Mobile Connector

Extends pull-printing capabilities to smartphones, tablets, laptops and other mobile devices. Mobile users can submit documents via a native print app for iOS or Android™ devices, or simply email the attached documents to the desired printer. HP Mobile Connector verifies the sender's printing rights before delivering the documents to the appropriate print queue. This creates a simple way to manage output from mobile devices in multi-platform environments.



HP and ePRINTit Mobile Printing solution

Helps to boost productivity, grow your business and expand customer services by providing geolocated and branded services for public printing worldwide. Enable mobile students, workers or travellers to easily print content from virtually anywhere and at any time. ePRINTit is a third-party solution that is enabled on most of the HP suite of printers. Easily deploy and scale this cloud-based solution without incurring the cost of additional print servers.



Wireless direct printing

Enables secure peer-to-peer wireless printing⁷ from smartphones, tablets and notebooks, without connecting to the corporate network.⁸

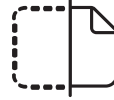
Workflow

Ensure your paper-based workflows follow your overall digital strategy, enabling your workforce to easily capture, manage and share information.



HP Workpath apps⁹

Allow independent developers to create hyper-localised, user-specific apps that work right from your MFP. Workpath apps offer a variety of capabilities for streamlined digitisation workflows and securing confidential information while creating an intuitive user experience. By offering the Workpath library of apps, HP is creating user experiences that are closer to a mobile app experience with vendor-specific solutions.



HP Access Control Scan

Digitises paper documents directly at the device to save time and help improve workflow efficiency. Save files as JPGs, TIFs, PDFs and other formats, with predefined file-naming conventions. By applying the optical character recognition (OCR) function, scanned documents can become text-searchable PDFs.



HP Capture and Route

Simplifies document scanning and distribution with a scalable, server-based solution. Easily convert paper documents into a variety of digital formats and quickly route the information to your customised distribution list with the touch of a button.

HP Intelligent Workflows is an automation tool for document and data management. Build customised digital workflows that enable teams to easily collaborate, route, process and manage important information.

HP Intelligent Capture is a cloud-native document capture solution. Input documents from scan, email and fax; manage automated classification, extraction and distribution.

HP Advance



Save time, cut costs and provide an improved, consistent user experience with your MFP by seamlessly integrating multiple document management functions. HP Advance helps you transform digital processes with a web-based interface and a flexible, scalable solution to meet your unique business requirements. Organisations can further benefit from HP security features that help protect data and documents. This solution can also support multi-vendor print fleets or more complicated scan functionality by integrating with a HP partner solution.

HP Advance provides a variety of modules to support your business requirements:

Module	Function	Benefit
HP Access Control Print ^{a,b}	Authentication, pull printing, job accounting, auditing	Helps secure devices and print jobs; tracks printing usage
HP Access Control Scan ^{a,b}	Searchable PDF (OCR), PDF, TIF, JPG; send to email or network folder	Consolidates scanning and printing functions while providing text-searchable files
HP Mobile Connector ^a	Authentication for pull printing (ID/PIN; credentials)	Simplifies printing from mobile devices
HP Direct Print	Push printing (IP printing)	Simplifies printer driver management and deployment
HP Advance additional modules	Integrate with SAP, Cerner and Epic; offers multiple sub-functions	Supports various printing environments; improves fleet management

^a HP Access Control Print and Scan bundle with Mobile Connector

^b HP Access Control Print and Scan bundle

Extensibility

Forward-thinking adaptability

Technology capabilities and user expectations never stop evolving, and HP FutureSmart firmware¹⁰ and the HP Open Extensibility Platform (OXP) let your printers evolve as well.



HP FutureSmart firmware

Extends the life of the printer, offering consistency across the fleet through an intuitive interface that makes fleet-wide updates easier and allows your existing HP devices to be equipped with the same features as next-generation devices.

HP OXP

Helps to create a unified environment that makes it easy for third-party software companies to design solutions that integrate seamlessly with enabled imaging and printing devices.

Why HP?

After 50+ years of innovations in technology, HP continues to lead the industry.



From low-end printers

to

production-class web presses

and

3D printing solutions

From the legendary reliability of HP LaserJet devices to 3D print applications, HP offers a wide variety of devices and solutions that can meet your current printing needs and scale as you grow.



HP LaserJet Pro

Professional-quality prints, essential security, management and solution support.



HP ScanJet

Effortlessly transform paper into digital with robust business scanning.



HP LaserJet Enterprise and Flow

Print-shop-quality colour and crisp, black text with the world's most secure printing,¹ advanced fleet monitoring, management and reporting. HP Flow technology for advanced workflows supporting collaboration, cloud-based document management and digital transformation initiatives.¹¹



HP Workflow solutions

Power crucial business processes to help reduce IT workload, enhance employee productivity and strengthen security.

Workflow

HP LaserJet Flow MFPs offer advanced workflow capabilities to help you accurately and securely capture content, manage documents and leverage scalable cloud-based solutions directly from the MFP control panel and keyboard.



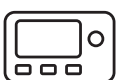
Fast duplex scanning

Keep pace with demand for digital documentation with fast 300 ipm,¹² duplex scanning and built-in optical character recognition (OCR) capabilities.



Large pull-out keyboard for simplified data entry

Make scanned documents simpler to manage with easy and accurate data entry at the device.



Simplify the production

HP Flow's auto-sensing technology feature is your silent digital workflow assistant. Smart auto-sensing does it all, from picking the best image quality based on type (text or photo) and paper tone/colour, to detecting two-sided prints and automatic separation of scan jobs.



Embedded HP EveryPage technology

Ultrasonic page detection ensures every page is successfully scanned and detects errors or missed pages, even when media variations occur.



HP Quick Sets

Automate personalised workflows at the touch of a button with HP Quick Sets. Enable customisation and repeatability of unique workflows for increased productivity and efficiency.

Next-generation Flow technologies



With next generation Flow technologies, advanced workflow and document management tools help you increase productivity throughout your organisation. These innovative features also help improve the accuracy and efficiency of your digital workflows.



Reverse and Retry technology

Innovative Reverse and Retry technology detects and resolves double-feed issues. Minimising multi-feed errors reduces paper jams and frustration while enhancing workflows.



OCR accelerator and scan to multiple

Today's digital workflows demand more from MFPs than ever before. Stay ahead with lightning-fast scan speeds and features like OCR to increase performance with the optional Workflow accelerator card.¹³

HP is committed to engineering the most sustainable portfolio of products and solutions¹⁴, driving print innovation

HP aims to create print systems that deliver maximum performance with minimal impact while supporting our customers to meet their sustainability goals.





Reduce your carbon footprint

HP helps you reduce your footprint by reducing carbon emissions in our products, including by improving resource efficiency, promoting features to reduce energy consumption and paper waste and offering responsible reuse and recycling.

HP launched the planet's first comprehensive carbon-neutral Managed Print Services offering in 2020.¹⁵ And with CarbonNeutral® Product certification, HP provides partners with a mechanism to make contractual obligations carbon neutral in accordance with the Carbon-Neutral Protocol.¹⁶



Conserve forests

HP's goal is to be Forest Positive by 2030 - helping to give back more than what you print - through our commitment to forest conservation.

Our approach to forest conservation goes beyond planting trees; it involves partnerships with recognised environmental organisations, designing products and services to reduce environmental impact and sharing tools for more responsible printing.



Drive a circular economy

Circular design is a thoughtful approach designed to ensure that nothing goes to waste and helps us get the most from our resources. It's based on the principles of designing out waste and pollution, keeping products and materials in use and regenerating natural systems.

HP has committed to 75% of its total annual product and packaging content coming from recycled or renewable materials and reused products and parts by 2030.¹⁷

HP offers solutions for your used IT equipment and supplies, enabling takeback and recycling schemes in over 70 countries and territories worldwide through its Planet Partners recycling programme.¹⁸



Support workforce well-being

HP printing systems are voluntarily designed and tested in compliance with the indoor air quality criteria of top ecolabel standards such as EPEAT and Blue Angel.¹⁹

HP LaserJet portfolio

HP LaserJet MFPs and printers were developed specifically to address essential business printing needs – for today and tomorrow. They combine extraordinary design and user experience, exceptional print quality and reliability, security that's unmatched in the industry,¹ plus extensibility features that allow them to adapt to and benefit from new technologies and new capabilities.



HP Color LaserJet A3 MFPs and printers



Product name	HP Color LaserJet Managed Flow MFP M880	HP Color LaserJet Managed E75245	HP Color LaserJet Managed E85055
Product number	Flow M880z: A2W75A Flow M880z+: A2W76A Flow M880z+ with NFC26/Wireless Direct: 27 D7P71A	E75245dn: T3U64A	E85055dn: T3U66A
Control panel	8.0-inch (20.3 cm) colour touchscreen	2.7-inch (6.9 cm) CGD with 24-key pad	4.3-inch (10.9 cm) colour touchscreen
Print speed, Letter ²⁰	Up to 45 ppm	Up to 45 ppm	Up to 55 ppm
First page out (from ready, Letter) ²¹	As fast as 11 seconds	As fast as 5.7/6.1 seconds, black/colour	As fast as 5.9/6.3 seconds, black/colour
Scan speeds, Letter ¹²	Simplex: Up to 70/68 ppm (black/colour) Duplex: Up to 85/63 ipm (black/colour)	Not applicable	Not applicable
Additional features	HP High-Performance Secure Hard Disk, Hardware Integration Pocket, easy-access USB	Hardware Integration Pocket; easy-access USB	Hardware Integration Pocket; easy-access USB
Flow features	Pull-out keyboard, HP EveryPage, embedded OCR, auto-orientation, auto-page-crop, auto-tone	Not available	Not available
Input (standard/maximum ²²)	M880z: Up to 2,100/2,100 sheets M880z+/M880z+ with NFC/WD: Up to 4,100/4,100 sheets	Up to 650/4,450 sheets	Up to 650/4,450 sheets
RMPV ²³	5,000 to 25,000 pages	Up to 40,000 pages	Up to 50,000 pages

HP Monochrome LaserJet A3 MFPs



Product name	LaserJet Pro MFP 426 series	LaserJet Managed MFP M725	LaserJet Managed MFP M830
Product number	M42623n: 8AF49A M42523n: 7ZB25A M42623dn: 8AF50A M42523dn: 7ZB26A M42625n: 8AF51A M42525n: 7ZB27A M42625dn: 8AF52A M42525dn: 7ZB28A	M725dn: CF066A M725f: CF067A M725z: CF068A	Flow M830z: CF367A Flow M830z NFC-WD: D7P68A
Control panel	4-line LCD, 10-key pad, 4-button quick set	8.0-inch (20.3 cm) colour touchscreen	8.0-inch (20.3 cm) colour touchscreen
Print speed, Letter ²⁰	Up to 23/25 ppm	Up to 40 ppm	Up to 56 ppm
First page out (from ready, Letter) ²¹	As fast as 7.7 seconds	As fast as 10 seconds	As fast as 9.5 seconds
Scan speeds, Letter ¹²	A4: Up to 33 ipm (black and colour) A3: Up to 21/14 ipm (black/colour) A4: Up to 13/12 ipm (black/colour) A3: Up to 9/7 ipm (black/colour)	Simplex: Up to 50/30 ppm (black/colour) Duplex: Up to 19/14 ipm (black/colour)	Simplex: Up to 70/68 ppm (black/colour) Duplex: Up to 85/63 ipm (black/colour)
Flow features	Not available	Not available	Pull-out keyboard, HP EveryPage, embedded OCR
Input (standard/maximum ²²)	Up to 250/600 sheets	Up to 600/2,100 sheets	Up to 4,600 sheets
RMPV ²³	2,000 to 5,000 pages	5,000 to 20,000 pages	15,000 to 50,000 pages

HP Color LaserJet A4 MFPs and printers



Product name	Color LaserJet Managed E45028dn	Color LaserJet Managed MFP E47528f	Color LaserJet Managed E55040	Color LaserJet Managed MFP E57540
Product number	E45028dn: 3QA35A	E47528f: 3QA75A	E55040dn: 3GX99A E55040dw: 3GX98A	E57540dn: 3GY25A Flow E57540c: 3GY26A
Control panel	2.7-inch (6.9 cm) colour graphics display	4.3-inch (10.9 cm) colour touchscreen	4.3-inch (10.9 cm) colour touchscreen	8.0-inch (20.3 cm) colour touchscreen
Print speed, Letter ²⁰	Up to 29 ppm	Up to 29 ppm	Up to 40 ppm	Up to 40 ppm
First page out (from ready, Letter) ²¹	As fast as 9.3/10.9 seconds (black/colour)	As fast as 9.3/10.9 seconds (black/colour)	As fast as 6.0/7.0 seconds (black/colour)	Black/colour: E57540dn: as fast as 5.5/6.8 seconds
				E57540c: as fast as 5.7/6.8 seconds
Scan speeds, Letter ¹²	Not applicable	Up to 31/21 ppm simplex, 49/37 ipm duplex (black/colour)	Not applicable	E57540dn: Up to 45/40 ppm, black/colour, simplex and duplex
				E57540c: Up to 48 ppm, black and colour, simplex; 68/60 ipm, black/colour, duplex
Flow features	Not available	Not available	Not available	Pull-out keyboard, HP EveryPage, embedded OCR, advanced imaging
Input (standard/maximum ²²)	Up to 300/850 sheets	Up to 300/850 sheets	Up to 650/2,300 sheets	Up to 650/2,300 sheets
RMPV ²³	1,500 to 7,500 pages	1,500 to 7,500 pages	2,000 to 15,000 pages	2,000 to 15,000 pages

HP Color LaserJet A4 MFPs and printers (continued)



Product name	Color LaserJet Managed E65150	Color LaserJet Managed E65160	Color LaserJet Managed MFP E67650	Color LaserJet Managed MFP E67660
Product number	E65150dn: 3GY03A	E65160dn: 3GY04A	E67650dh: 3GY31A	Flow E67660z: 3GY32A
Control panel	4.3-inch (10.9 cm) icon-based colour touchscreen	4.3-inch (10.9 cm) icon-based colour touchscreen	8.0-inch (20.3 cm) colour touchscreen	8.0-inch (20.3 cm) colour touchscreen
Print speed, Letter ²⁰	Up to 50 ppm	Up to 60 ppm	Up to 50 ppm	Up to 60 ppm
First page out (from ready, Letter) ²¹	As fast as 6.4 seconds	As fast as 5.7 seconds	As fast as 6.4 seconds	As fast as 5.7 seconds
Scan speeds, Letter ¹²	Not applicable	Not applicable	Up to 75 ppm/120 ipm, simplex/duplex, black and colour	Up to 90 ppm/180 ipm, simplex/duplex, black and colour
Flow features	Not available	Not available	Not available	Pull-out keyboard, HP EveryPage, embedded OCR, advanced imaging
Input (standard/maximum ²²)	Up to 650/3,200 sheets	Up to 650/3,200 sheets	Up to 650/3,200 sheets	Up to 650/3,200 sheets
RMPV ²³	3,000 to 24,000 pages	4,000 to 30,000 pages	3,000 to 24,000 pages	4,000 to 30,000 pages

HP Monochrome LaserJet A4 MFPs and printers



Product name	LaserJet Managed E40040dn	LaserJet Managed MFP E42540f	LaserJet Managed E50145	LaserJet Managed MFP E52645	LaserJet Managed E60155
Product number	E40040dn: 3PZ35A	E42540f: 3PZ75A	E50145dn: 1PU51A	E52645dn: 1PS54A Flow E52645c: 1PS55A	E60155dn: 3GY09A
Control panel	2.7-inch (6.9 cm) colour graphics display	4.3-inch (10.9 cm) colour touchscreen	4.3-inch (10.9 cm) colour touchscreen	8.0-inch (20.3 cm) colour touchscreen	4.3-inch (10.9 cm) colour touchscreen
Print speed, Letter ²⁰	Up to 42 ppm (HP High Speed)	Up to 42 ppm (HP High Speed)	Up to 52 ppm (HP High Speed)	Up to 52 ppm (HP High Speed)	Up to 55 ppm
First page out (from ready, Letter) ²¹	As fast as 6.3 seconds	As fast as 6.3 seconds	As fast as 5.9 seconds	As fast as 6.0 seconds	As fast as 5.0 seconds
Scan speeds, Letter ¹²	Not applicable	Up to 31 ppm simplex, 49 ipm duplex	Not applicable	E52645dn: Up to 45/40 ppm, black/colour, simplex E52645c: Up to 48 ppm, black and colour, simplex E52645dn: Up to 45/40 ipm, black/colour, duplex E52645c: Up to 68/60 ipm, black/colour, duplex	Not applicable
Flow features	Not available	Not available	Not available	Pull-out keyboard, HP EveryPage, embedded OCR, advanced imaging	Not available
Input (standard/maximum ²²)	Up to 350/900 sheets	Up to 350/900 sheets	Up to 650/2,300 sheets	Up to 650/2,300 sheets	Up to 650/4,400 sheets
RMPV ²³	1,500 to 7,500 pages	1,500 to 7,500 pages	2,000 to 15,000 pages	4,000 to 15,000 pages	5,000 to 30,000 pages

HP Monochrome LaserJet A4 MFPs and printers (continued)



Product name	Laser Jet Managed E60165	LaserJet Managed E60175	LaserJet Managed MFP E62655	LaserJet Managed MFP E62665	LaserJet Managed Flow MFP E62675z
Product number	E60165dn: 3GY10A	E60175dn: 3GY12A	E62655dn: 3GY14A	E62665hs: 3GY15A Flow E62665h: 3GY16A Flow E62665z: 3GY17A	E62675z: 3GY18A
Control panel	4.3-inch (10.9 cm) colour touchscreen	4.3-inch (10.9 cm) colour touchscreen	8.0-inch (20.3 cm) colour touchscreen (all MFP models)	8.0-inch (20.3 cm) colour touchscreen (all MFP models)	8.0-inch (20.3 cm) colour touchscreen (all MFP models)
Print speed, Letter ²⁰	Up to 65 ppm	Up to 75 ppm	Up to 55 ppm	Up to 65 ppm	Up to 75 ppm
First page out (from ready, Letter) ²¹	As fast as 5.0 seconds	As fast as 5.0 seconds	As fast as 5.1 seconds	As fast as 5.1 seconds	As fast as 5.3 seconds
Scan speeds, Letter ¹²	Not applicable	Not applicable	Simplex, black and colour: Up to 75 ppm	Simplex, black and colour: E62665hs: Up to 75 ppm E62665h/z: Up to 90 ppm	Simplex, black and colour: Up to 83 ppm/167 ipm Up to 83 ppm/167 ipm
			Duplex, black and colour: Up to 120 ipm	Duplex, black and colour: E62665hs: Up to 120 ipm E62665h/z: Up to 180 ipm	Simplex, black and colour: Up to 90 ppm/180 ipm Up to 90 ppm/180 ipm
Flow features	Not available	Not available	Not available	Flow models only: Pull-out keyboard, HP EveryPage, embedded OCR, advanced imaging	Flow models only: Pull-out keyboard, HP EveryPage, embedded OCR, advanced imaging
Input (standard/maximum ²²)	Up to 650/4,400 sheets	Up to 650/4,400 sheets	Up to 650/3,750 sheets (all MFP models)	Up to 650/3,750 sheets (all MFP models)	Up to 650/3,750 sheets (all MFP models)
RMPV ²³	5,000 to 40,000 pages	5,000 to 50,000 pages	5,000 to 40,000 pages (all MFP models)	5,000 to 40,000 pages (all MFP models)	5,000 to 40,000 pages (all MFP models)

Optional input and finishing accessories

Color and Monochrome A3 LaserJet

Devices	Compatible accessories	
Color LaserJet Managed MFP M775	Input	500-sheet feeder (CE860A), 1 x 500-sheet feeder with cabinet (CE792A), 3 x 500-sheet feeder and stand (CE725A), 3,500-sheet HCI and stand (CF305A)
	Output	Not applicable
Color LaserJet Managed MFP M880	Input	3 x 500-sheet feeder and stand (C1N63A), 3,500-sheet HCI and stand (C1N64A)
	Output	Booklet maker/finisher with 2/3 hole punch (A2W84A), stapler/stacker (A2W80A), stapler/stacker with 2/4 hole punch (A2W82A), booklet maker/finisher (A2W83A), booklet maker/finisher with 2/4 hole punch (CZ999A)
Color LaserJet Managed E75245 Color LaserJet Managed E85055	Input	550-sheet paper tray (T3V27A), LaserJet stand (T3V28A), 2 x 550-sheet paper tray and stand (T3V29A), 2,700-sheet HCI and stand (T3V30A)
	Output	Not applicable
Color LaserJet Managed MFP M725	Input	500-sheet feeder (CF239A), 1 x 500-sheet feeder, cabinet and stand (CF243A), 3 x 500-sheet feeder and stand (CF242A), 3,500-sheet HCI and stand (CF245A)
	Output	Not applicable
Color LaserJet Managed MFP M830	Input	3 x 500-sheet feeder and stand (C1N63A), 3,500-sheet HCI and stand (C1N64A)
	Output	Booklet maker/finisher (CZ285A), stapler/stacker (CZ994A), stapler/stacker with 2/3 hole punch (CZ995A)

Color and Monochrome A4 LaserJet

Devices	Compatible accessories	
LaserJet Managed E50145 LaserJet Managed MFP E52645	Input	550-sheet feeder (F2A72A), printer stand and cabinet (F2A73A)
	Output	Not applicable
Color LaserJet Managed E55040 Color LaserJet Managed MFP E57540	Input	550-sheet feeder (B5L34A), printer stand and cabinet (B5L51A)
	Output	Not applicable
LaserJet Managed E60155 LaserJet Managed E60165 LaserJet Managed E60175	Input	550-sheet paper feeder (L0H17A), 2,100-sheet paper feeder (L0H18A), envelope feeder (L0H21A), printer stand (L0H19A)
	Output	Stapler/stacker/mailbox (L0H20A)
Color LaserJet Managed E65150 Color LaserJet Managed E65160 Color LaserJet Managed MFP E67650 Color LaserJet Managed MFP E67660	Input	1 x 550-sheet paper feeder (P1B09A), 1 x 550-sheet paper feeder with stand and cabinet (P1B10A), 3 x 550 sheet paper feeder and stand (P1B11A), 1 x 550 and 2,000 sheet HCI feeder and stand (P1B12A)
	Output	Not applicable
LaserJet Managed MFP E62655 LaserJet Managed MFP E62665	Input	550-sheet paper feeder (J8J89A), 1 x 550-sheet paper feeder with stand and cabinet (J8J91A), 3 x 550-sheet paper feeder and stand (J8J93A), 1 x 550 and 2,000-sheet HCI feeder and stand (J8J92A), envelope feeder (J8J90A)
	Output	Not applicable
LaserJet Managed E40040dn LaserJet Managed MFP E42540f	Input	550-sheet paper feeder (D9P29A)
	Output	Not applicable
Color LaserJet Managed E45028dn Color LaserJet Managed MFP E47528f	Input	550-sheet paper feeder (CF404A)
	Output	Not applicable

HP scanner portfolio

Sheet feed



Product name	ScanJet Pro 2000 s2	ScanJet Pro 3000 s4	ScanJet Enterprise Flow 5000 s5	ScanJet Enterprise Flow 7000 s3
Product number	6FW06A	6FW07A	6FW09A	L2757A
Scan speeds ¹²	35 ppm/70 ipm	40 ppm/80 ipm	65 ppm/130 ipm	75 ppm/150 ipm
Scan software	HP Scan software	HP Scan software	HP Scan Premium software	HP Scan Premium software
Recommended daily duty cycle	Up to 3,500 sheets	Up to 4,000 sheets	Up to 7,500 sheets	Up to 7,500 sheets

Network



Product name	ScanJet Pro N4000 snw1	ScanJet Enterprise Flow N7000 snw1	Digital Sender Flow 8500 fn2	ScanJet Enterprise Flow N9120 fn2
Product number	6FW08A	6FW10A	L2762A	L2763A
Scan speeds ¹²	40 ppm/80 ipm	75 ppm/150 ipm	100 ppm/200 ipm	120 ppm/240 ipm
Scan software	HP Scan software	HP Scan Premium software	HP Scan Premium software	HP Scan Premium software
Recommended daily duty cycle	Up to 4,000 sheets	Up to 7,500 sheets	Up to 10,000 sheets	Up to 20,000 sheets

Flatbed with automatic document feeder (ADF)



Product name	ScanJet Pro 2600 f1	ScanJet Pro 3600 f1	ScanJet Pro N4600 fnw1	ScanJet Enterprise Flow N6600 fnw1
Product number	20G05A	20G06A	20G07A	20G08A
Scan speeds ¹²	25 ppm/50 ipm	30 ppm/60 ipm	40 ppm/80 ipm	50 ppm/100 ipm
Scan software	HP Scan software	HP Scan software	HP Scan Premium software	HP Scan Premium software
Recommended daily duty cycle	Up to 1,500 sheets	Up to 3,000 sheets	Up to 6,000 sheets	Up to 8,000 sheets

Disclaimers and trademarks

Legal footnotes

1. HP's most advanced embedded security features are available on HP Managed and Enterprise devices with HP FutureSmart firmware 4.5 or above. Claim based on HP review of 2022 published features of competitive in-class printers. Only HP offers a combination of security features to automatically detect, stop and recover from attacks with a self-healing reboot, in line with NIST SP 800-193 Guidelines for device cyber resiliency. For a list of compatible products, visit: hp.com/go/PrintersThatProtect. For more information, visit: hp.com/go/PrinterSecurityClaims.
2. HP Security Manager must be purchased separately. For details, see hp.com/go/securitymanager. Competitive claim based on HP internal research on competitor offerings (Device Security Comparison, January 2015) and Solutions Report on HP JetAdvantage Security Manager 2.1 from Buyers Laboratory LLC, February 2015.
3. Availability of solutions may vary by country.
4. HP Web Jetadmin is available for download at no additional charge at hp.com/go/wja.
5. HP Secure Print works with most network-connected printers and MFPs. On-device authentication requires HP FutureSmart firmware 4.8 or newer. Supported card readers include X3D03A (HP USB Universal Card Reader) and Y7C05A (HP HIP2 Keystroke Reader). Internet connection is required for some functionality. HP Insights is a web-based application that requires internet access. It is bundled with HP Secure Print and can also be purchased separately. For more information, see hp.com/go/secureprint.
6. Local printing requires mobile devices and printer to be on the same network or have a direct wireless connection to the printer. Wireless performance is dependent on physical environment and distance from the access point. Wireless operations are compatible with 2.4 GHz operations only. Remote printing requires an internet connection to an HP web-connected printer, app or software and an HP ePrint account.
7. This solution comes as standard on most HP printers and MFPs or can be easily downloaded at no charge.
8. The mobile device needs to be connected directly to the wireless network of a wireless direct-capable printer prior to printing. Depending on mobile device, an app or driver may also be required. Wireless performance is dependent on physical environment and distance from the access point in the printer.
9. Not all MFPs may be compatible with Workpath apps. To enable HP Workpath, some devices may require optional accessory or firmware upgrade. Not all apps may be available in all locations. Subscription may be required. Personalised content and integration functions are applicable to supported HP Workpath apps only.
10. Some features enabled by future HP FutureSmart upgrades may not be available on older devices if e.g. physical product characteristics limit the functionality of the new feature.
11. HP Flow is available on HP Flow MFP models only.
12. Scan speeds measured from ADF. Actual processing speeds may vary depending on scan resolution, network conditions, computer performance and application software. Scan speeds apply to black and colour, unless otherwise specified.
13. The Workflow accelerator card is expected to be available in January 2023.
14. HP Sustainable Impact Report 2021 p. 6. www.hp.com/sustainableimpact.
15. Based on results of third-party (WSP) research for HP of OEM MPS providers with carbon-neutral offers as of June 2020. "Comprehensive" means the planet's only globally certified carbon-neutral MPS service that covers lifecycle emissions due to raw material extraction, manufacturing, transportation, use of HP printers, Original HP supplies and paper and end of service.
16. Natural Capital Partners, The CarbonNeutral Protocol, 2020 edition, <https://www.carbonneutral.com/thecarbonneutral-protocol>.
17. HP Sustainable Impact Report 2021 p. 67. www.hp.com/sustainableimpact.
18. Programme availability varies. For details see <http://www.hp.com/recycle>.
19. An HP printing system consists of HP printer, paper and Original HP supply. Blue Angel DE-UZ 205 emissions criteria or earlier versions of criteria applicable when printing system launched.
20. Print speeds measured using ISO/IEC 24734; this excludes the first set of test documents. For more information, see <http://www.hp.com/go/printerclaims>. Exact speed varies depending on the system configuration, software application, driver and document complexity.
21. First Copy Out from Ready and Simplex Copy Speed measured using ISO/IEC 29183; Duplex Copy Speed measured using ISO/IEC 24735; this excludes the first set of test documents. For more information, see <http://www.hp.com/go/printerclaims>. Exact speed varies depending on the system configuration, software application, document complexity, media size, media orientation and media type.
22. Maximum input capacity may require the purchase of additional optional input accessories.
23. HP recommends that the number of printed pages per month be within the stated range for optimum device performance, based on factors including supplies replacement intervals and device life over an extended warranty period.

