

**Bring an Internet Connection to Any Electrical Power Outlet**



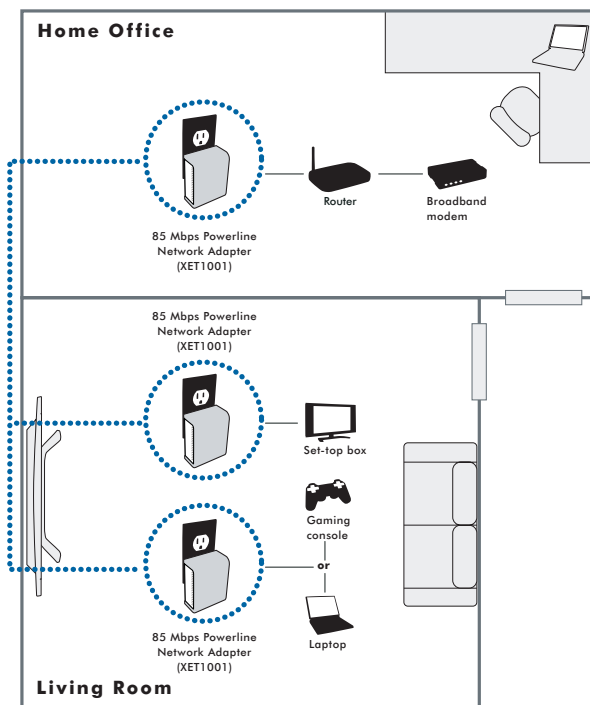
- Extend your home network using existing powerlines<sup>1</sup>
- No setup required—just plug and play!
- Perfect for extending high-speed Internet around the home
- Connect to game consoles, PCs, DVR, network storage, etc.

**Features**

- Turns any electrical power outlet into an Ethernet network connection
- Delivers fast 85 Mbps speed<sup>†</sup>
- For use with both wired and wireless routers and gateways
- Simply plug one XET1001 into your router and another XET1001 into any Ethernet-ready device<sup>1</sup>
- Connect a desktop, notebook PC, gaming console, NETGEAR ReadyNAS™ NV+, Slingbox™, a DVR or NETGEAR Print Server (PS121)
- Data encryption ensures privacy and security
- Supports Windows® Vista™
- HomePlug 1.0 compatible

**Kit of  
Two Units**

**Plug-and-play Connection  
of a Powerline network<sup>1, 2</sup>**



<sup>1</sup> Requires use of a NETGEAR XE104, XET1001, XEPS103, XE102, WGXB102 or other HomePlug 1.0 compatible Powerline device (two (2) XET1001 devices included).

<sup>2</sup> XET1001 is compatible with NETGEAR's XEPS103, XE104, XE102, and WGXB102 products. XET1001 is not compatible nor interoperable with NETGEAR's HDX101 or HDX111, however it may coexist on the same network.



1-888-NETGEAR (638-4327)  
Email: info@NETGEAR.com



**Extend your home network**

NETGEAR's 85 Mbps Powerline Network Adapter Kit (XETB1001) is a convenient solution for extending your home network by using standard electrical outlets. This kit delivers the devices you need to set up an Internet connection in any room without running new wires. The XETB1001 allows you to connect multiple devices to your network:

- Game Consoles
- Desktop PCs
- Notebook PCs
- Storage Central
- Slingbox™
- Internet Routers

**System Requirements**

- For device connection: Available RJ-45 Ethernet port
- To enable encryption: Microsoft® Windows® Vista™, XP or 2000

**PowerLine Standard**

- HomePlug 1.0 compatible

**Network Ports**

- One (1) 10/100 Mbps Ethernet port each
- One (1) 85 Mbps Powerline port each

**Power Supply**

- 100–120V @ 50–60 Hz

**LEDs**

- Unit: Power
- PowerLine: Link
- Ethernet: Link/activity

**Environmental Specifications**

- Operating temperature: 0° to 40° C (32° to 104° F)
- Operating relative humidity: 10% to 90% non-condensing

**Electromagnetic Emissions**

- FCC Part 15 Class B

**Power and Safety Regulations**

- UL Certified

**Typical Coverage**

- Up to 5000 square foot home

**Warranty**

- 1-year Warranty (see information enclosed)

**Package Contents**

- Two (2) 85 Mbps Powerline Network Adapters (XET1001)
- Ethernet cable
- Installation guide
- Setup CD
- Warranty card
- Support and information card

**NETGEAR Related Products****Network**

- RangeMax Wireless-N Router (WNR834B)
- RangeMax Wireless Router (WPN824)

- Super-G® Wireless Router (WGT624)
- Wireless-G Router (WGR614)
- RangeMax Wireless Access Point (WPN802)
- Open Source Wireless-G Router (KWGR614)
- 8-port Gigabit Desktop Switch (GS608)
- 5-port Gigabit Desktop Switch (GS605)
- ProSafe® 5-Port Gigabit Desktop Switch (GS105)
- ProSafe® VPN Firewall 8 w/8-port 10/100 Mbps Switch (FVS318)
- ProSafe® 802.11 Wireless Access Point (WG102)
- 85 Mbps Powerline Ethernet Switch (XE104)
- 14 Mbps Powerline Network Adapter (XE102)
- Space-saving Powerline Network Extender (XEPS103)
- 14 Mbps Powerline Wireless Range Extender (WGXB102)

**Printer**

- USB Print Server (PS121)

# NETGEAR®

4500 Great America Parkway  
Santa Clara, CA 95054 USA  
1-888-NETGEAR (638-4327)  
E-mail: info@NETGEAR.com  
www.NETGEAR.com

© 2008 NETGEAR, Inc. All rights reserved. NETGEAR, the NETGEAR Logo, NETGEAR Digital Entertainer Logo, Connect with Innovation, FrontView, IntelliFi, PowerShift, ProSafe, RAIDar, RAIDiator, RangeMax, ReadyNAS, and Smart Wizard are trademarks and/or registered trademarks of NETGEAR, Inc., in the United States and/or other countries. Other brand names mentioned herein are for identification purposes only and may be trademarks of their respective holder(s).

This product has been tested for quality assurance and this product or its components may have been recycled.

Outlets must be electrically connected in order for Powerline devices to provide a network connection between them.

\*Actual data throughput will vary. Network conditions and environmental factors, including volume of network traffic, building material and construction, and network overhead, lower actual data throughput rate.

\*Free basic installation support provided for 90 days from date of purchase. Advanced product features and configurations are not included in free basic installation support; optional premium support available.

D-XETB1001-0