

SPECIFICATIONS

MultiXpress C8380ND

Differences

| | |
|---------------------------|--|
| PRINT | |
| Speed (Mono) * | Simplex : Up to 38 ppm in A4 (40 ppm in Letter) / Duplex : Up to 33 ppm in A4 (35 ppm in Letter) |
| Speed (Color) * | Simplex : Up to 38 ppm in A4 (40 ppm in Letter) / Duplex : Up to 30 ppm in A4 (31ppm in Letter) |
| First Print Out Time | Less than 13 seconds |
| Resolution | 9600 x 600 dpi effective output |
| Emulation | PCL5c, PCL6, PostScript3, PDF Direct V1.4 |
| Duplex | Standard |
| COPY | |
| Speed (Mono) ** | Simplex : Up to 38 cpm in A4 (40 cpm in Letter) / Duplex : Up to 33 cpm in A4 (35 cpm in Letter) |
| Speed (Color) ** | Simplex : Up to 38 cpm in A4 (40 cpm in Letter) / Duplex : Up to 30 cpm in A4 (31cpm in Letter) |
| Resolution | Up to 1200 x 1200 dpi |
| First Copy Out Time | Less than 13 seconds |
| Zoom Rate | 25% ~ 400% |
| Multy Copy | 1~999 |
| Duplex Copy | Standard (1:2, 2:2, 2:1) |
| Copy Features | N-up, ID Card copy, Auto fit, Margin shift, Book copy, Covers, Transparencies, Auto Suppression, Booklet, Clone, Poster |
| SCAN | |
| Compatibility | N/W TWAIN standard, WIA standard |
| Method | Color CCDM |
| Resolution | 600 x 600 dpi (Optical) / 4,800 x 4,800 dpi (Enhanced) |
| Scan to | E-mail, FTP, SMB, Client, USB (Direct Scanning) |
| FAX (OPTIONAL) | |
| Compatibility | ITU-T G3, Super G3 |
| Modem speed | 33.6 Kbps |
| Resolution | Mono : 406 X 392 dpi / Color : 200 X 200 dpi |
| Memory | HDD store |
| Auto Dial | Speed Dial : 200 locations |
| Fax Feature | On hook Dial, Pause, Auto Redial, Last Number Redial, PC Fax |
| PAPER HANDLING | |
| Input Capacity and Types | Standard : 520-sheet cassette Tray (80g/m ²), 100-sheet MP tray (80g/m ²) / Max : 1,660 sheets @ 80g/m ² |
| Output Capacity and Types | 500-sheet Face Down (80g/m ² , 20 lbs) |
| Media Size | 98 x 148 mm (3.85" x 5.83") ~ 216 x 900 mm (8.5" x 35.4") / Banner Size Printing : 216mm x 900mm |
| Media Type | Plain Paper, Thick Paper, Thin Paper, Bond Paper, Color Paper, CardStock, Labels, Transparency, Envelope, Preprinted, Cotton, Recycled Paper, Archive |
| ADF Capacity | 100-sheet DADF |
| ADF Document Size | Width : 145 ~ 216mm (5.7"~8.5") / Length : 145 ~ 356mm (5.7" ~ 14.0") for Single page scan, 145 ~ 400mm (5.7" ~ 15.7") for Multi pages scan |
| GENERAL | |
| LCD | 800 x 480 7" WVGA Color Touch Screen |
| Memory / Storage | 572MB (Max. 1,088MB) / 80GB HDD |
| OS Compatibility | Windows 2000 / XP (32/64bit) / 2003(32/64bit) / Vista (32/64bit), Various Linux, Mac OS X 10.3~10.5 |
| Interface | USB 2.0, USB Host 2.0, Ethernet 10/100 Base TX |
| Noise Level | Printing 54dB / Copying 56dB / Standby 43dB |
| Duty Cycle, Monthly | 100,000 sheets / month |
| Dimensions (W x D x H) | 606.8 x 575.0 x 815.5 mm |
| Weight | Set : 71.5 Kg (with Consumables) / Packaging : 93.6 Kg |
| SUPPLIES | |
| Yield | Black Toner Cartridge (CLX-K8380A) : Average 20,000 standard pages Yellow (CLX-Y8380A) / Magenta (CLX-M8380A) / CyanToner Cartridge (CLX-C8380A) : Average 15,000 standard pages *** Imaging Unit (CLX-R838XK/C/M/Y) : Average 30,000 pages Waste Toner Container (CLX-W8380A) : Average 48,000 pages |
| OPTIONS | |
| Options | Fax Kit : SCX-FAX210 / Finisher : SCX-FIN10S / SmarThru™ Workflow : SCX-KIT11S / 512MB Memory : CLP-MEM103 / Staple Cartridge : SCX-STP000 / Short Stand : SCX-DSK10S / Tall Stand : SCX-DSK10T / 520-sheet Cassette Tray : SCX-S6555A / 2,100-sheet HCF : SCX-HCF100 / FDI : SCX-KIT20F |

* Print speed will be affected by Operating system used, computing performance, application software, connecting method, media type, media size and job complexity.
** Copy Speed is based on Single Document Multiple Copy.
*** Declared continuous cartridge yield value in accordance with ISO/IEC 19798.
Specifications are subject to change without notification.



imagine color efficiency
for your business

Samsung **MultiXpress** C8380ND



Why Samsung?

With all the copiers and multifunction printers on the market, why choose Samsung? Samsung is a world-renowned global company that regularly wins awards for reliability, design and innovative technology. It has the widest range of technologies and products, making it an expert in digital convergence. In the printing industry, Samsung is the fastest growing company, topping sales for many models.

| Brand Equity | | Most Innovative Company | | | |
|--------------|-----------|-------------------------|-------------|-----------------------------|----------------------------|
| RANK | COMPANY | RANK | COMPANY | Margin Growth 2001 - 2006 % | Stock Return 2001 - 2006 % |
| 1 | Coca-Cola | 1 | Apple | - | 50.6 |
| 2 | Microsoft | 2 | Google | - | - |
| 3 | IBM | 3 | TOYOTA | 5.21 | 20.50 |
| 5 | NOKIA | 4 | GE | 1.36 | 1.11 |
| 21 | SAMSUNG | 5 | Microsoft | -3.04 | 0.83 |
| | ... | 6 | P&G | 3.70 | 12.20 |
| 25 | SONY | 7 | 3M | 5.49 | 7.77 |
| 36 | Canon | 8 | Walt Disney | 7.35 | 11.71 |
| 56 | xerox | 9 | IBM | 4.97 | -3.48 |
| 88 | STARBUCKS | 10 | SONY | 1.14 | -2.62 |
| | | 17 | SAMSUNG | 8.07 | 36.24 |

Unit : US\$ bil.
Source : BusinessWeek / Interbrand

Source : Business Week May, 2007

Samsung has earned its reputation with award-winning excellence, based on performance, eco-friendliness and design innovation and for providing businesses with network and security solutions. Samsung products are reliable and deliver a high monthly duty cycle, keeping business productivity steady. In addition, they are reliable with low toner failure, and produce high quality color prints which are more durable and last a long time without fading.



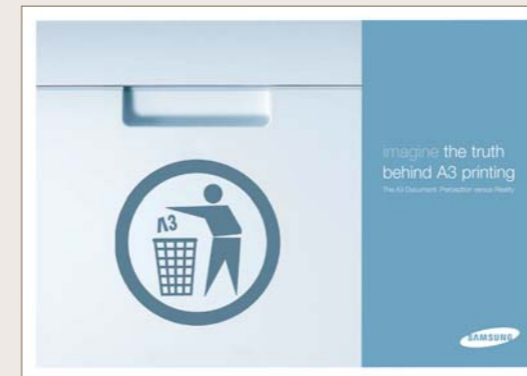
Samsung also acquired global recognition and certification for being environmentally responsible, in terms of production, post-consumer recycling and creating pollution-free work environment.

The World's Most Admired Company 4th Place Among Electronics Companies!

| The World's Most Admired Companies | | 2006/2005 | SCORE |
|------------------------------------|----|---------------------------|-------|
| 1 | 1 | General Electric | 8.24 |
| 2 | 2 | Siemens | 7.19 |
| 3 | 11 | Matsushita Electric Indl. | 7.03 |
| 4 | 3 | Samsung Electronics | 6.79 |
| 5 | 4 | Royal Philips Electronics | 6.63 |
| 6 | 5 | Sony | 6.49 |
| 7 | 10 | Hitachi | 6.33 |

* Dates refer to year of survey

Why A4?



Most companies commonly think that A3 Digital Multi Function Product is essential to their daily business operation. However, research* shows that out of 8,636 pages an average worker produces in a year, only 202 pages are A3 size – which is only 2.36% of the total printouts! The sophisticated scanning and printing function enable users to scale the document to fit the paper size available on the printer, which greatly reduce the needs for A3 printout, at the same

time saving half of the paper cost for each print! Just think, when was the last time you copied or printed on an A3 device.

* Source : UK Research Dec 2007

Why MultiXpress?

Samsung's latest A4 color DMFP, the **MultiXpress** C8380ND, has raised the industrial standard to a greater height. It outperforms others DMFPs with many advanced functions and proven reliability.

The **MultiXpress** C8380ND is the fastest A4 color DMFP in the market today. Its proven reliability, high quality color output and innovative features outshine other DMFPs in its class! The embedded administrative and accounting solutions make **MultiXpress** C8380ND the best choice for the business printing environment!



Imagine gaining color and efficiency with higher productivity. Samsung's **MultiXpress** C8380ND printer provides businesses with a one-stop printing station that can print, scan and copy in high quality color. With Samsung **MultiXpress** C8380ND, it's not that hard to imagine

Configuration



Main Unit (520 sheets + MP 100 sheets)



| Option | 1 Finisher + HCF (High Capacity Feeder) 2,100 sheets | 1 Finisher + Max. 2 SCF (Single Cassette Feeder) 520 sheets x 3 + Short Stand | 1 Finisher + Tall Stand |
|--------|--|---|-------------------------------|
| | | | |

The Fastest Digital Color A4 DMFP

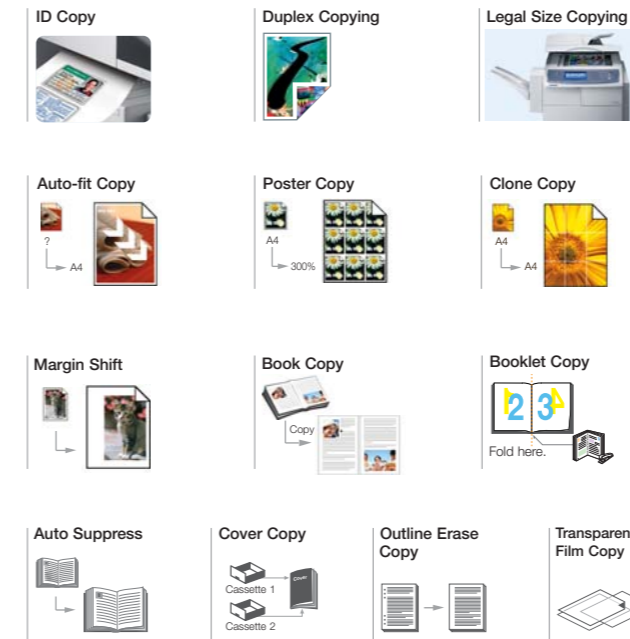
Increases productivity with Xpress speeds

Now businesses do not have to sacrifice speed to gain multifunction features and color printing. Samsung **MultiXpress** C8380ND, A4 color DMFP, prints at incredible speeds of 38ppm. It is multi-talented and fast enough for even large corporate businesses

The most productive A4 Color DMFP

Fast Copying

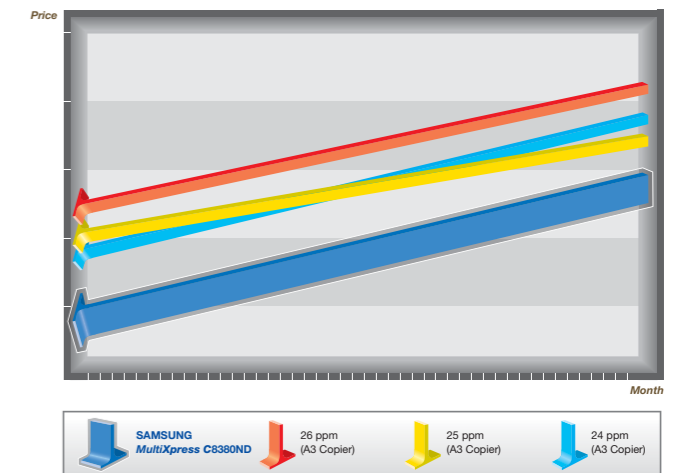
The **MultiXpress** C8380ND produces 38ppm in black and white – and the same speed for color. Moreover, the **MultiXpress** C8380ND performs nearly all the copy functions that are generally operated on A3 DMFP.



Fast Fax (Option)

The optional fax kit offers speed dial up to 200 numbers, group dial up to 100 groups (up to 200 locations per group), duplex send and receive, fax-email and many other useful features. The duplex function enable the incoming fax be printed double-sided – save your printing cost!

TCO Comparison by Month

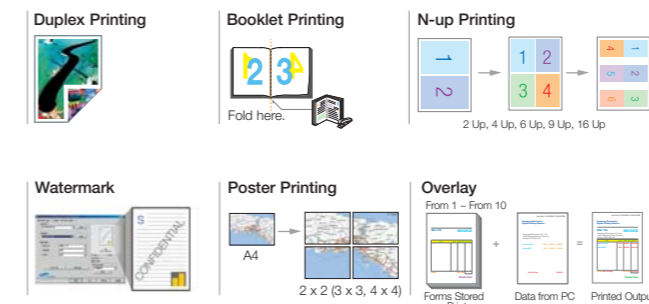


*Factor

- ① Set Price : based on the vendor's websites
- ② Consumable CPP
- ③ PM Parts CPP
- ④ Service Cost

Fast Printing

Printing color or black-and-white document at 38 ppm (simplex) and 33ppm (duplex) your workloads can be completed efficiently. The numerous standard printing features help you to print document more easily and efficiently



Vivid Color Scanner & Network Scanning

The **MultiXpress** C8380ND's enhanced scanning resolution (4,800 x 4,800 dpi) and color CCD method reproduce your document at its finest quality.



The Most Reliable Multifunction Center

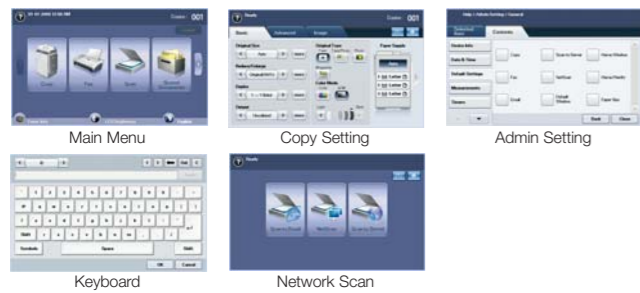
Maintains efficiency with Xpress reliability

Reliability is the word to describe **MultiXpress** C8380ND. It offers all functions that business expect from a DMFP – color printing, digital copying, scanning and faxing – at the same time increase business productivity with reliable performance, quality output and simple maintenance

The most reliable performer!

Wide Touch Screen/UI Design

Samsung's exclusive 800 x 480 color wide LCD touch screen and 3-dimensional UI design is very intuitive and easy to use – no manual or training required!



Convenient Design



Paper Handling

Adding optional paper trays to store up to 3,240 sheets of paper at one time, reduce the frequency to refill paper.

Paper Jam

If and when a paper jam occurs the device indicates the problem area on the user display so you can simply, open the tray door to remove.

Modular system

The modular design make it easy to replace consumables, adding accessory and/or upgrade package. For example, finisher or memory can be easily slotted onto the main device.

Automatic Toner Ordering System (i-ATOS)

This innovative Automatic Toner Ordering System makes it really easy and convenient for you to order supplies for your MFP. It automatically alerts the designated supplier by email, and it provides a direct link to the supplier's homepage for a quick order.



The Professional Solution Center

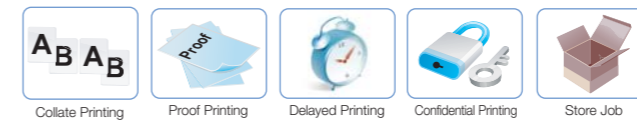
Offers control with Xpress Customization

Color provides business professionalism to gain that winning edge. Samsung's **MultiXpress** C8380ND provides high-speed color printing and copying with customizable control to increase productivity and maintain economical running cost.

The most powerful solution center!

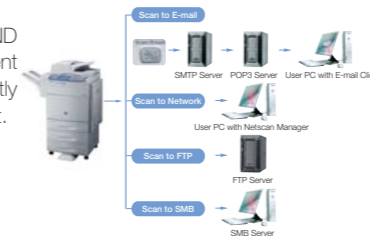
Expanded Printing

- Capabilities with Hard Disk Solution
: The standard 80GB HDD ensures smooth print traffic in a busy office and print environment.



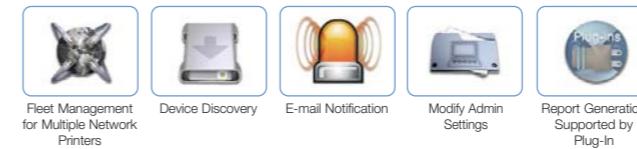
Scan to Anywhere

The **MultiXpress** C8380ND helps to distribute document efficiently by scanning directly to email, FTP, SMB or client.



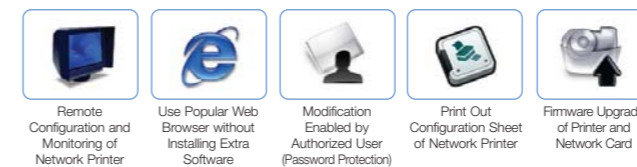
SyncThru™ Web Admin Service

SyncThru™ Web Admin service allows IT managers to easily manage and monitor all printers/MFPs on the network. The powerful feature permits job accounting, usage metering, authentication, storage management, remote driver installation and modification settings.



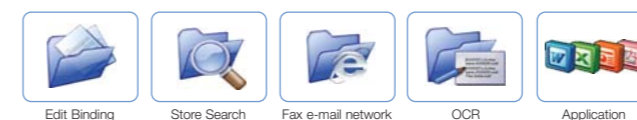
SyncThru™ Web Service

It provides administrators with the ability to change network and individual Printer settings, upgrade firmware and view network printer/MFP status.



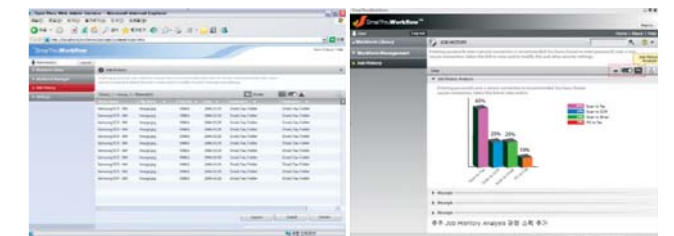
SmarThru™ Office

In offices with complicated network with a variety of equipment, SmarThru's document management and editing features provide convenience and ease for users. Network scan is also provided as default.



SmarThru™ Workflow (Option)

SmarThru™ Workflow streamlines the document capture-process-route system enabling easy document management. This additional software is provided with the Samsung Network Scan Kit.



JScript™ (Printing Open Platform) Introduction

JScript™ is a standardised, common platform that makes it possible to integrate solutions into an organisation's printers and MFPs and helps companies make the most of their printing investment. This embedded communication platform makes it simple to build on personalised solution packages that meet the needs of individual companies.

