

# HP ProDesk 600 G4 Desktop Mini PC



## Future-ready reliability and performance

Designed to fit the modern workspace, the stylish and ultra-small HP ProDesk 600 Desktop Mini is a powerful and reliable PC with performance, security, and manageability features for your business.



HP recommends Windows 10 Pro for business

- Windows 10 Pro<sup>1</sup>
- Intel® Core™ processors<sup>2</sup>

### Business-ready performance, nicely packaged

- Power through your day with a solution you can flexibly configure with an 8th Gen Intel® Core™ processor<sup>2</sup> and options that include Intel® Optane™ memory<sup>3</sup>, SSD storage<sup>4</sup>, and up to 32 GB of DDR4 memory.<sup>4</sup>

### Expansion that extends your investment

- Maximize the life of your PC with options<sup>4</sup> that let you expand on your own schedule, including dual M.2 slots which allow for SSD RAID, traditional SATA drives, and a configurable I/O port.

### Place it where you need it

- Take your footprint down to near zero with a PC that attaches behind an HP EliteDisplay<sup>5</sup>, or mount<sup>6</sup> and secure it almost anywhere with HP accessories.<sup>4</sup> Declutter with USB-C™, short cables, and rear I/O ports that connect to a range of displays.<sup>4</sup>

### HP exclusive security and manageability

- Protect against BIOS attacks with HP Sure Start Gen4.<sup>7</sup> Help prevent data breaches and downtime with HP BIOSphere Gen4<sup>8</sup> and easily manage devices through Microsoft System Center Configuration Manager with HP Manageability Integration Kit.<sup>9</sup>

### Featuring

- Be productive in any situation with Windows 10 Pro and powerful security, collaboration, and connectivity features from HP.
- Protect your PC with the hardware-enforced self-healing protection of HP Sure Start Gen4 that automatically recovers the BIOS.
- Help protect your PC from websites, attachments, malware, ransomware, and viruses with hardware-enforced security from HP Sure Click.
- The HP Manageability Integration Kit helps speed up image creation and management of hardware, BIOS, and security through Microsoft System Center Configuration Manager.
- Keep data out of reach and defend against theft, attacks, and unauthorized users with HP Client Security Manager Gen4.
- Keep productivity high and downtime low with HP BIOSphere Gen4 firmware-level automation. Your PCs have extra protection thanks to automatic updates and security checks.
- ITDMs can quickly help create, improve, and secure custom Windows images with HP Image Assistant Gen3.
- Enjoy always-on, included self-help support built right into your PC, for the life of your PC, with HP Support Assistant.
- Rest easy with a PC that goes the distance and is designed to pass HP Total Test Process.

## HP ProDesk 600 G4 Desktop Mini PC Specifications Table



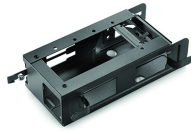
|  |   |
|--|---|
| Available Operating Systems              | Windows 10 Pro 64 – HP recommends Windows 10 Pro for business <sup>1</sup><br>Windows 10 Home 64 <sup>1</sup><br>Windows 10 Home Single Language 64 <sup>1</sup><br>FreeDOS   |
| Processor family <sup>14</sup>           | 8th Generation Intel® Core™ i7 processor (i7-8700T); Intel® Celeron® processor (G4900T is Windows 10 only); 8th Generation Intel® Core™ i5 processor (i5-8500T, i5-8600T); 8th Generation Intel® Core™ i3 processor (i3-8100T, i3-8300T); Intel® Pentium® processor (G5400T, G5500T are Windows 10 only); 8th Generation Intel® Core™ i5+ processor (8500T); 8th Generation Intel® Core™ i5+ processor (8600T); 8th Generation Intel® Core™ i7+ processor (i7-8700T)  |
| Available Processors <sup>16,32,33</sup> | Intel® Core™ i7-8700T with Intel® UHD Graphics 630 (2.4 GHz base frequency, up to 4 GHz with Intel® Turbo Boost Technology, 12 MB cache, 6 cores); Intel® Core™ i5-8600T with Intel® UHD Graphics 630 (2.3 GHz base frequency, up to 3.7 GHz with Intel® Turbo Boost Technology, 9 MB cache, 6 cores); Intel® Core™ i5-8500T with Intel® UHD Graphics 630 (2.1 GHz base frequency, up to 3.5 GHz with Intel® Turbo Boost Technology, 9 MB cache, 6 cores); Intel® Core™ i3-8300T with Intel® UHD Graphics 630 (3.2 GHz, 8 MB cache, 4 cores); Intel® Core™ i3-8100T with Intel® UHD Graphics 630 (3.1 GHz, 6 MB cache, 4 cores); Intel® Pentium® Gold G5500T with Intel® UHD Graphics 630 (3.2 GHz, 4 MB cache, 2 cores); Intel® Pentium® Gold G5400T with Intel® UHD Graphics 610 (3.1 GHz, 4 MB cache, 2 cores); Intel® Celeron® G4900T with Intel® UHD Graphics 610 (2.9 GHz, 2 MB cache, 2 cores); Intel® Core™ i7+ 8700T (Core™ i7 and 16 GB Intel® Optane™ memory) (2.4 GHz base frequency, up to 4 GHz with Intel® Turbo Boost Technology, 12 MB cache, 6 cores); Intel® Core™ i5+ 8600T (Core™ i5 and 16 GB Intel® Optane™ memory) (2.3 GHz base frequency, up to 3.7 GHz with Intel® Turbo Boost Technology, 9 MB cache, 6 cores); Intel® Core™ i5+ 8500T (Core™ i5 and 16 GB Intel® Optane™ memory) (2.1 GHz base frequency, up to 3.5 GHz with Intel® Turbo Boost Technology, 9 MB cache, 6 cores) |
| Chipset                                  | Intel® Q370   |
| Form factor                              | Mini  |
| Maximum memory                           | 32 GB DDR4-2666 SDRAM <sup>3,4</sup><br>Transfer rates up to 2666 MT/s.   |
| Memory slots                             | 2 SODIMM  |
| Internal storage                         | 500 GB up to 2 TB SATA HDD <sup>2</sup><br>up to 500 GB 7200 rpm SATA SED Opal 2 HDD <sup>2</sup><br>256 GB up to 512 GB SATA SSD <sup>2</sup><br>256 GB up to 512 GB SATA SED Opal 2 TLC SSD <sup>2</sup><br>128 GB up to 512 GB PCIe® NVMe™ M.2 SSD <sup>2</sup><br>256 GB up to 512 GB PCIe® NVMe™ SED Opal 2 TLC M.2 SSD <sup>2</sup><br>500 GB   |
| Available Graphics                       | Integrated: Intel® UHD Graphics 630; Intel® UHD Graphics 610  |
| Audio                                    | Conexant CX20632 codec, universal audio jack, headset and headphone front ports (3.5 mm), multi-streaming capable   |
| Expansion slots                          | 1 M.2 2230; 2 M.2 2230/2280 (1 M.2 slot for WLAN and 2 M.2 2230/2280 slot for storage.)   |
| Ports and Connectors                     | Front: 1 headphone; 1 headset connector; 1 USB 3.1 Gen 1; 1 USB 3.1 Gen 2; 1 USB 3.1 Type-C™ Gen 2<br>Rear: 1 RJ-45; 2 DisplayPort™ 1.2; 2 USB 3.1 Gen 1; 2 USB 3.1 Gen 2; 1 configurable video port<br>Optional: 1 DisplayPort™ 1.2; 1 serial; 1 VGA; 1 HDMI 2.0; 1 USB 3.1 Type-C™ Gen 2 (DisplayPort™)   |
| Input devices                            | HP USB Conferencing Keyboard; HP USB Business Slim Keyboard; HP USB Business Slim Smart Card (CCID) Keyboard <sup>6</sup> ; HP USB 1000 dpi Laser Mouse; HP USB Optical Mouse <sup>6</sup> ;  |
| Communications                           | LAN: Intel® I219LM GbE ; WLAN: Intel® Dual Band Wireless-AC 9560 802.11ac (2x2) and Bluetooth® 5 M.2, non-vPro™ 5;  |
| Drive Bays                               | One 2.5" HDD  |
| Environmental                            | Operating temperature: 10 to 35°C; Operating humidity: 10 to 90% RH   |
| Available Software                       | Absolute Persistence module; HP Device Access Manager; HP Hotkey Support; HP Noise Cancellation Software; HP Recovery Manager; HP Secure Erase; HP Support Assistant; HP Sure Click; HP Sure Start; Native Miracast Support; HP Wireless Wakeup; Buy Office (sold separately); Windows Defender; HP JumpStarts <sup>9,17,19,22,23,24</sup>  |
| Security management                      | DriveLock; Hood sensor; HP BIOSphere; HP Credential Manager; HP Password Manager; HP Power On Authentication; HP Spare Key; Intel® Identity Protection Technology (Intel® IPT); Power-on password (via BIOS); RAID configurations; Removable media write/boot control; SATA port disablement (via BIOS); Setup password (via BIOS); Support for chassis padlocks and cable lock devices; USB enable/disable (via BIOS); Master Boot Record Security; HP Client Security Suite Gen 4; HP Sure Start Gen 4; Pre-boot Authentication; Serial enable/disable (via BIOS); Trusted Platform Module TPM 2.0 Embedded Security Chip shipped with Windows 10 (Common Criteria EAL4+ Certified)(FIPS 140-2 Level 2 Certified) <sup>7,28,29,30,31,34</sup>   |
| Management features                      | HP BIOS Config Utility (download); HP Client Catalog (download); HP Cloud Recovery; HP Driver Packs (download); HP Management Integration Kit for Microsoft System Center Configuration Management Gen 2; HP System Software Manager (download); Ivanti Management Suite; Update BIOS via Cloud or Network (BIOS feature) <sup>10,26,27,35</sup>  |
| Power                                    | 65 W external power adapter, up to 89% efficiency <sup>65</sup> W external power adapter, up to 89% efficiency  |
| Dimensions                               | 17.7 x 17.5 x 3.4 cm  |
| Weight                                   | 1.25 kg (Exact weight depends on configuration.)  |
| Ergonomic features                       | ##displaytiltswiv##   |
| Energy efficiency compliance             | ENERGY STAR® certified; EPEAT® 2019 registered where applicable <sup>11</sup>   |
| Environmental specifications             | Low halogen <sup>12</sup>   |
| Warranty                                 | 3 year (3-3-3) limited warranty and service offering includes 3 years of parts, labor and on-site repair. Terms and conditions vary by country. Certain restrictions and exclusions apply.  |

## HP ProDesk 600 G4 Desktop Mini PC

### Accessories and services (not included)

---

#### HP DM VESA Power Supply Holder Kit



Simplify cable management when mounting your HP Desktop Mini with the HP DM VESA Power Supply Holder Kit, which attaches to your HP Desktop Mini Security/Dual VESA Sleeve v2 (2JA32AA) to reduce cable clutter from the PC's power supply cable and brick. Proven performance and reliability to deliver maximum investment protection. Offering the perfect combination of performance, reliability and investment protection to any IT environment. For businesses that require superior stability and manageability with low lifecycle costs, or desktops with proven technology, superior price/performance and a wide choice of features, or even entry-level PCs that balance price and essential computing capabilities – the HP Desktop family holds the solution.  
**Product number: 1RL87AA**

---

#### HP Wireless Slim Business Keyboard



Enjoy easy data entry and wireless connectivity with the HP Wireless Business Slim Keyboard, designed to complement the 2015 class of HP Business PCs. Enjoy easy data entry and wireless connectivity with the HP Wireless Business Slim Keyboard, designed to complement the 2015 class of HP Business PCs. Offering the perfect combination of performance, reliability and investment protection to any IT environment. For businesses that require superior stability and manageability with low lifecycle costs, or desktops with proven technology, superior price/performance and a wide choice of features, or even entry-level PCs that balance price and essential computing capabilities – the HP Desktop family holds the solution.  
**Product number: N3R88AA**

---

#### HP TLC 256 GB SATA SSD



Expand the storage capabilities of your desktop with the HP TLC 256 GB SATA SSD<sup>1</sup>, which includes TLC flash and the same reliability you already get from current from SSD drives. Expand the storage capabilities of your desktop with the HP TLC 256 GB SATA SSD<sup>1</sup>, which includes TLC flash and the same reliability you already get from current from SSD drives. Offering the perfect combination of performance, reliability and investment protection to any IT environment. For businesses that require superior stability and manageability with low lifecycle costs, or desktops with proven technology, superior price/performance and a wide choice of features, or even entry-level PCs that balance price and essential computing capabilities – the HP Desktop family holds the solution.  
**Product number: P1N68AA**

---

#### HP 5 year Next business day Onsite Desktop Only Hardware Support



Receive 5 years of next business day onsite HW Support from an HP-qualified technician for your computing device, if the issue cannot be solved remotely.  
**Product number: U7899E**

---

## HP ProDesk 600 G4 Desktop Mini PC

### Messaging Footnotes

- <sup>1</sup> Not all features are available in all editions or versions of Windows. Systems may require upgraded and/or separately purchased hardware, drivers, software or BIOS update to take full advantage of Windows functionality. Windows 10 is automatically updated, which is always enabled. ISP fees may apply and additional requirements may apply over time for updates. See <http://www.windows.com>.
- <sup>2</sup> Multi-Core is designed to improve performance of certain software products. Not all customers or software applications will necessarily benefit from use of this technology. Performance and clock frequency will vary depending on application workload and your hardware and software configurations. Intel's numbering, branding and/or naming is not a measurement of higher performance.
- <sup>3</sup> Intel® Optane™ memory system acceleration does not replace or increase the DRAM in your system and requires configuration with an optional Intel® Core™ i(5 or 7)+ processor.
- <sup>4</sup> Sold separately or as an optional feature.
- <sup>5</sup> Display sold separately. Requires HP B300 or B500 PC Mounting Bracket for Monitors, sold separately. See display QuickSpecs for bracket guidance.
- <sup>6</sup> Mounting hardware sold separately.
- <sup>7</sup> HP Sure Start Gen4 is available on HP Elite and HP Pro 600 products equipped with 8th generation Intel® or AMD processors.
- <sup>8</sup> HP BIOSphere Gen4 requires Intel® or AMD 8th Gen processors. Features may vary depending on the platform and configurations.
- <sup>9</sup> HP Manageability Integration Kit can be downloaded from <http://www.hp.com/go/clientmanagement>.
- <sup>10</sup> HP Sure Click is available on most HP PCs and supports Microsoft® Internet Explorer and Chromium™. Supported attachments include Microsoft Office (Word, Excel, PowerPoint) and PDF files in read only mode, when Microsoft Office or Adobe Acrobat are installed.
- <sup>11</sup> HP Client Security Manager Gen4 requires Windows and Intel® or AMD 8th Gen processors.

### Technical Specifications Footnotes

- <sup>1</sup> Not all features are available in all editions or versions of Windows. Systems may require upgraded and/or separately purchased hardware, drivers, software or BIOS update to take full advantage of Windows functionality. Windows 10 is automatically updated, which is always enabled. ISP fees may apply and additional requirements may apply over time for updates. See <http://www.windows.com>
- <sup>2</sup> For hard drives and solid state drives, GB = 1 billion bytes. TB = 1 trillion bytes. Actual formatted capacity is less. Up to 36 GB (for Windows 10) of system disk is reserved for the system recovery software.
- <sup>3</sup> For systems configured with more than 3 GB of memory and a 32-bit operating system, all memory may not be available due to system resource requirements. Addressing memory above 4 GB requires a 64-bit operating system. Memory modules support data transfer rates up to 2666 MT/s; actual data rate is determined by the system's configured processor. See processor specifications for supported memory data rate.
- <sup>4</sup> All memory slots are customer accessible / upgradeable.
- <sup>5</sup> Wireless access point and internet service required.
- <sup>6</sup> Availability may vary by country.
- <sup>7</sup> Intel® Identity Protection Technology (Intel® IPT): Models configured with Intel® Core™ processors have the ability to utilize advanced security protection for online transactions. Intel® Identity Protection Technology (Intel® IPT) used in conjunction with participating web sites, provides double identity authentication by adding a hardware component in addition to the usual user name and password. Intel® Identity Protection Technology (Intel® IPT) is initialized through an HP Client Security module. HP BIOSphere Gen4: features may vary depending on the PC platform and configurations requires 8th Gen Intel® processors.
- <sup>8</sup> Absolute Persistence module: is shipped turned off, and will be activated when customers activate a purchased subscription. Subscriptions can be purchased for terms ranging multiple years. Service is limited, check with Absolute for availability outside the U.S. The Absolute Recovery Guarantee is a limited warranty. Certain conditions apply. For full details visit: <http://www.absolute.com/company/legal/agreements/computrace-agreement>. Data Delete is an optional service provided by Absolute Software. If utilized, the Recovery Guarantee is null and void. In order to use the Data Delete service, customers must first sign a Pre-Authorization Agreement and either obtain a PIN or purchase one or more RSA SecurID tokens from Absolute Software.
- <sup>9</sup> HP Driver Packs: not preinstalled, however available for download at <http://www.hp.com/go/clientmanagement>.
- <sup>10</sup> Based on US EPEAT® registration according to IEEE 1680.1-2018 EPEAT®. Status varies by country. Visit [www.epeat.net](http://www.epeat.net) for more information.
- <sup>11</sup> External power supplies, power cords, cables and peripherals are not Low Halogen. Service parts obtained after purchase may not be Low Halogen.
- <sup>12</sup> NOTE: Your product does not support Windows 8 or Windows 7. In accordance with Microsoft's support policy, HP does not support the Windows 8 or Windows 7 operating system on products configured with Intel® and AMD 7th generation and forward processors or provide any Windows 8 or Windows 7 drivers on <http://www.support.hp.com>
- <sup>13</sup> Multi-core is designed to improve performance of certain software products. Not all customers or software applications will necessarily benefit from use of this technology. Performance and clock frequency will vary depending on application workload and your hardware and software configurations. Intel's numbering, branding and/or naming is not a measurement of higher performance.
- <sup>14</sup> Native Miracast Support is a wireless technology your PC can use to project your screen to TVs, projectors, and streaming.
- <sup>15</sup> HP Support Assistant requires Windows and Internet access.
- <sup>16</sup> Windows Defender Opt In, Windows 10, and internet connection required for updates.
- <sup>17</sup> HP Sure Click is available on select HP platforms and supports Microsoft Internet Explorer, Google Chrome™, and Chromium™. Supported attachments include Microsoft Office (Word, Excel, PowerPoint) and PDF files in read only mode, when Microsoft Office or Adobe Acrobat are installed.
- <sup>18</sup> HP Secure Erase: for the methods outlined in the National Institute of Standards and Technology Special Publication 800-88 "Clear" sanitation method.
- <sup>19</sup> HP Management Integration Kit for Microsoft System Center Configuration Management Gen 2: can be downloaded from <http://www8.hp.com/us/en/ads/clientmanagement/overview.html>
- <sup>20</sup> Nanti Management Suite: subscription required.
- <sup>21</sup> HP Client Security Suite Gen 4: requires Windows and Intel® or AMD 8th generation processors.
- <sup>22</sup> HP Password Manager: requires Internet Explorer or Chrome™ or Firefox. Some websites and applications may not be supported. User may need to enable or allow the add-on / extension in the internet browser. HP Sure Start Gen 4: is available on HP ProDesk & ProOne products equipped with Intel® 8th generation processors.
- <sup>23</sup> RAID configuration: sold separately or as an optional feature, multiple data drives setup in a RAID array is optional and requires product to be configured with vPro™ at purchase.
- <sup>24</sup> Trusted Platform Module TPM 2.0 Embedded Security Chip shipped with Windows 10 (Common Criteria EAL4+ Certified)/FIPS 140-2 Level 2 Certified): In some scenarios, machines pre-configured with Windows OS might ship with TPM turned off.
- <sup>25</sup> Intel® Turbo Boost technology requires a PC with a processor with Intel Turbo Boost capability. Intel Turbo Boost performance varies depending on hardware, software and overall system configuration. See [www.intel.com/technology/turboboost](http://www.intel.com/technology/turboboost) for more information.
- <sup>26</sup> Intel® Optane™ memory system acceleration does not replace or increase the DRAM in your system and requires configuration with an optional Intel® Core™ i(5 or 7)+ processor.
- <sup>27</sup> HP Drive Lock is not supported on NVMe drives.
- <sup>28</sup> HP Cloud Recovery is available for HP Elite and Pro desktops and laptops PCs with Intel® or AMD processors and requires an open, wired network connection. Note: You must back up important files, data, photos, videos, etc. before use to avoid loss of data. Detail please refer to: <https://support.hp.com/us-en/document/c05115630>.

Sign up for updates [hp.com/go/getupdated](http://hp.com/go/getupdated)

© Copyright 2019 HP Development Company, L.P. The information contained herein is subject to change without notice. The only warranties for HP products and services are set forth in the express warranty statements accompanying such products and services. Nothing herein should be construed as constituting an additional warranty. HP shall not be liable for technical or editorial errors or omissions contained herein.

Bluetooth is a trademark of its proprietor and used by HP Inc. under license. Intel, Optane, vPro, the Intel logo, Intel Core, and Core Inside are trademarks or registered trademarks of Intel Corporation or its subsidiaries in the United States and other countries. USB Type-C™ and USB-C™ are trademarks of USB Implementers Forum. Adobe PDF is a trademark of Adobe Systems Incorporated. ENERGY STAR and the ENERGY STAR mark are registered trademarks owned by the U.S. Environmental Protection Agency. All other trademarks are the property of their respective owners.

4AA7-2965, December 2019

--

