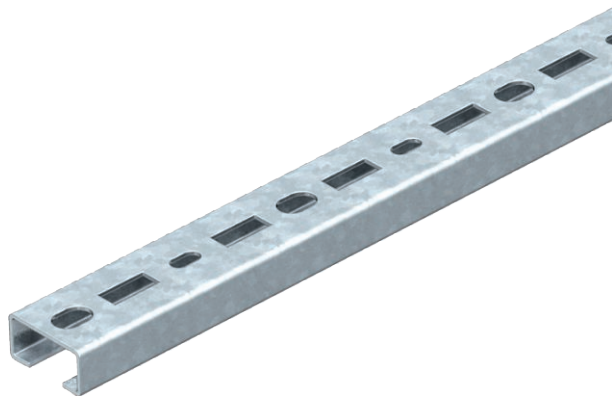


# Technical data sheet

## CM3015 profile rail, slot 16 mm, perforated

Item no. 1109839



Profile rail, perforated, slot width 16 mm.

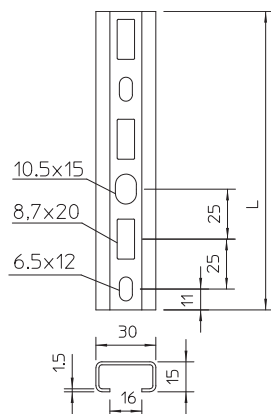


St	Steel
FT	Hot-dip galvanised

### Master data

Item no.	1109839
Type	CM3015P0700FT
Description 1	Profile rail
Description 2	perforated, slot 16mm
Dimension	700x30x15
Material	Steel
Material symbol	St
Surface	Hot-dip galvanised
Surface to DIN	DIN EN ISO 1461
Surface symbol	FT
Smallest sales unit (VG)	10 Piece
Weight	50,00 kg/100 pc.

### Technical data



Length	700,00 mm
Width	30,00 mm
Height	15,00 mm
Dimension L	700,00 mm
Breakable	<input type="checkbox"/>
lampDimension WxH	30 x 15 mm
Version	Single profile
Type of perforation	Perforated back
Drill hole spacing, centre	25,00 mm
Suitable for maintaining electrical function	<input type="checkbox"/>
Material thickness	1,50 mm
With perforation	<input checked="" type="checkbox"/>
With tothing	<input type="checkbox"/>
Profile shape	C profile
Slot width	16,00 mm
Static value A	
Static value ly	
Static value lz	
Static value Wy	
Static value Wz	