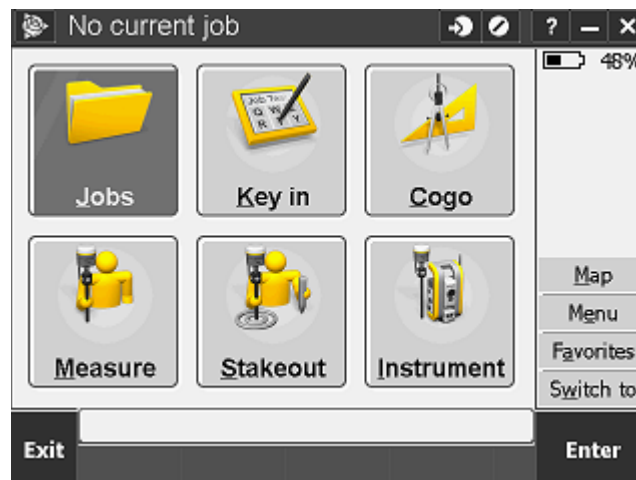


Job setup for UTM Zone coordinate system

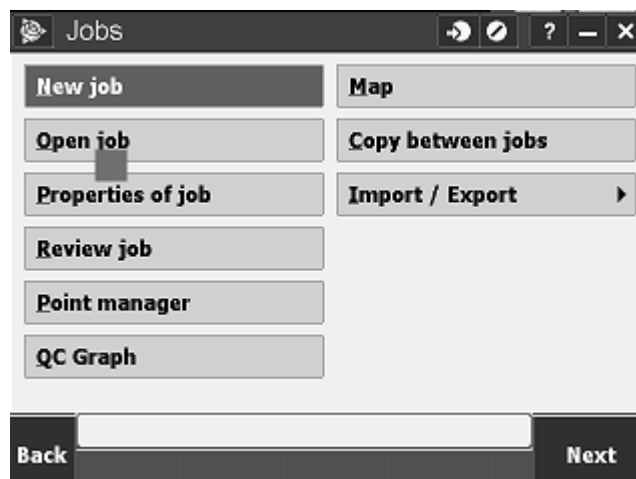
The job setup can be done in the office, before you are even on the site. You will want to create a new job.



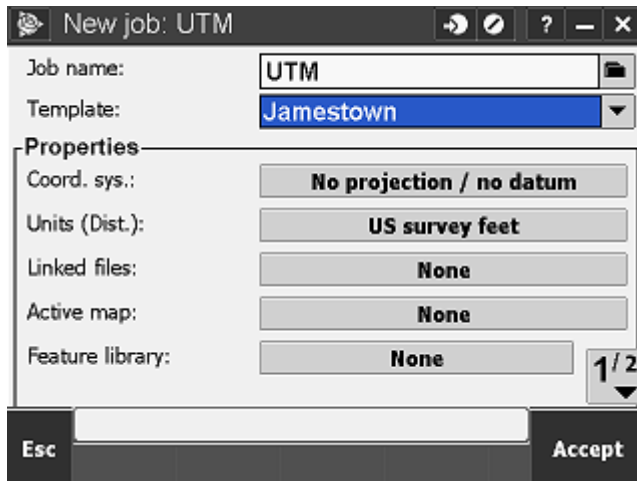
Choose "General Survey".



On data collector, select "Jobs"

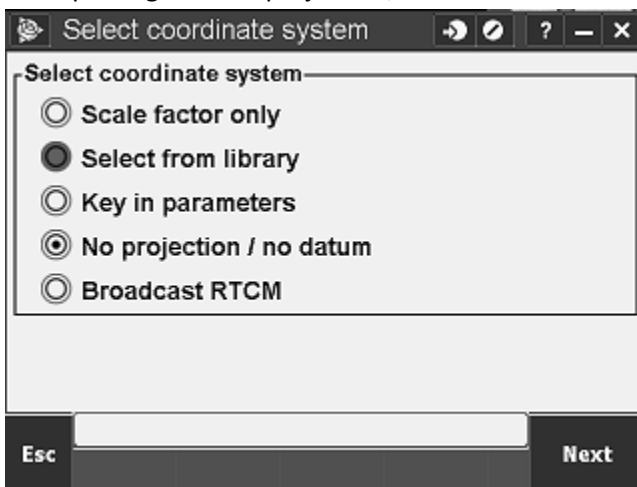


Select "New Job".



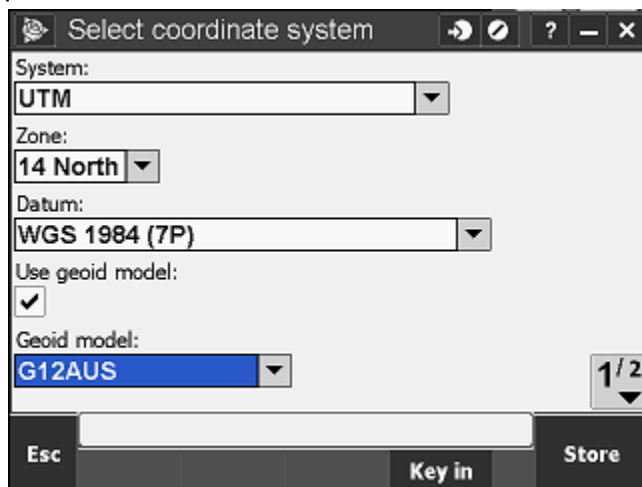
Name the job and save it in the appropriate folder (by clicking on the folder icon to the right of the job name.)

You can setup a template. Example might be no projection/no datum or UTM.



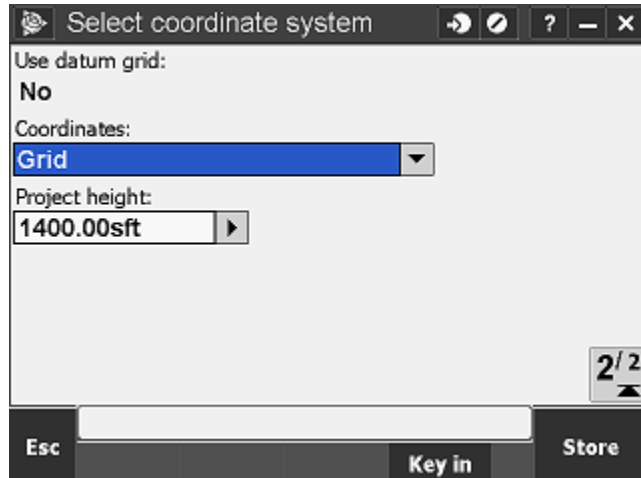
Then, under the file properties click in the box to the right of Coord. Sys: where it says No projection/no datum.

Choose "Select from library"

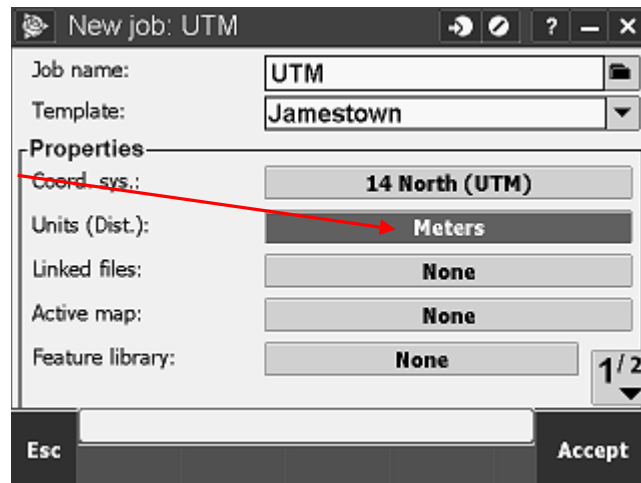


Under System choose "UTM", under Zone choose either "14 North" or "13 North" (western 1/4 of ND), under Datum choose "WGS 1984 (7P)", place a check mark in the box to the right of "Use geoid model",

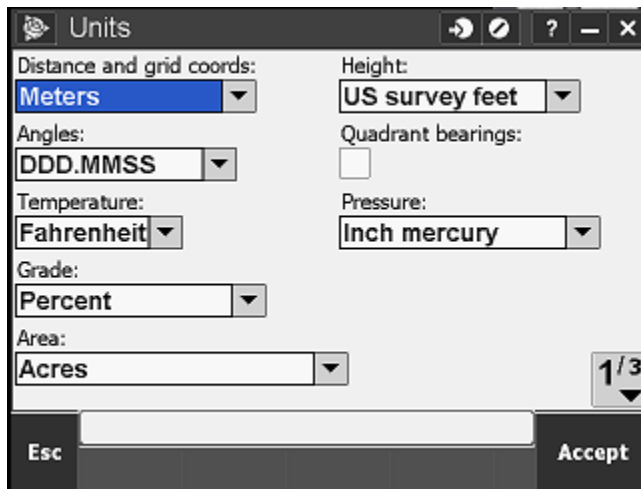
pick the "G12AUS" geoid model. ArcMap and the associated maps uses UTM, WGS 1984 coordinate system. Go to page 2/2.



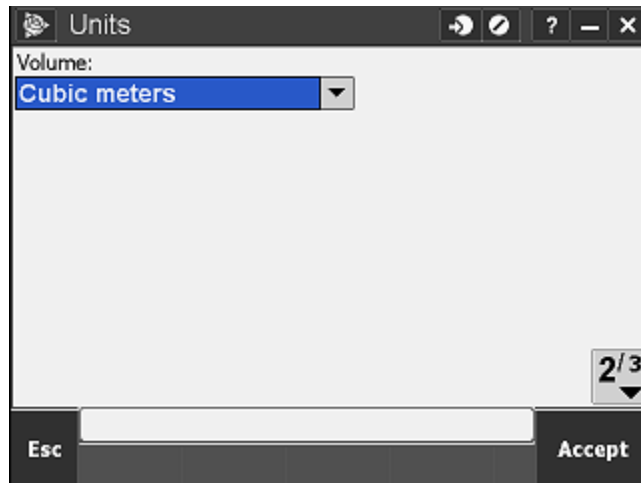
Under coordinates, choose "Grid", input an approximate project height, (based on the Topo Map). Click "Store" in bottom right.



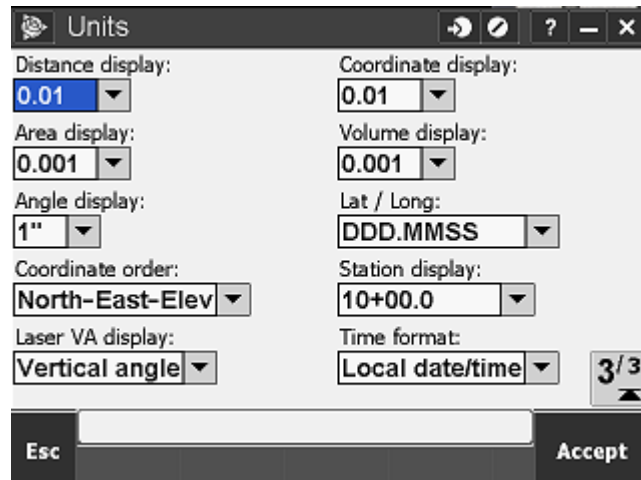
In the Units (Dist) box click on "US Survey Feet" or "Meters" to adjust the units.



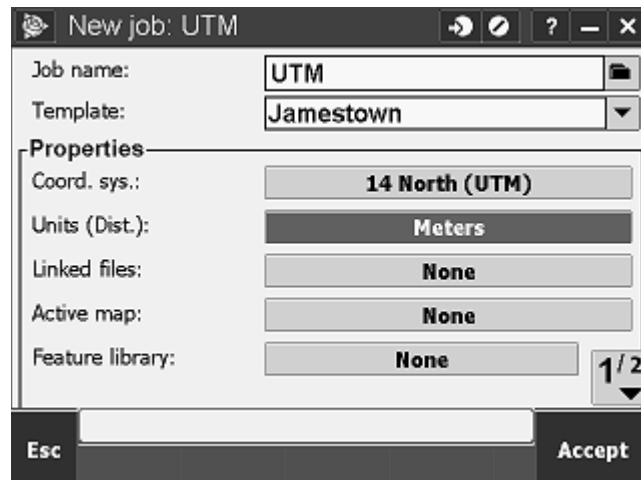
Settings for 1st page. **ArcMap uses a UTM data which is meter (x), meter (y), feet (z or elevation).**



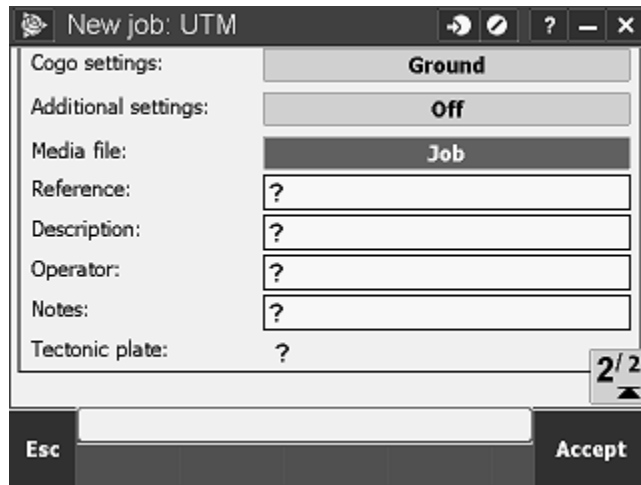
Settings for 2nd page. (Shouldn't have to change anything.)



Settings for 3rd page. (Shouldn't have to change anything.)



New Job settings, page 1



New Job settings, page 2

The job setup should look like this.