

# MAXNET®



Patented  
U.S.# 6,842,348;  
Cdn.# 2,404,844

**5RU Standard RF Chassis**  
(front view)

## Chassis & Power Supplies Chassis

- Active 5RU chassis (required if using active modules but will also fit passive modules)
- Remote powered 5RU active chassis (required if using active modules but will also fit passive modules)
- Passive 5RU chassis, 18 positions (nine actives)
- 3RU horizontal passive chassis, 10 positions
- 1RU horizontal passive chassis, two positions

**D3.1/CCAP™  
Compliant**



**MN5BA Active Chassis**  
(front view)



**MN1 Passive Chassis**  
(front view)



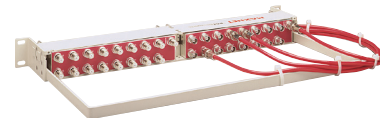
**MN3 Passive Chassis**  
(front view)

**MN5BAR  
Remote Powered  
Active Chassis**  
(rear close-up view)

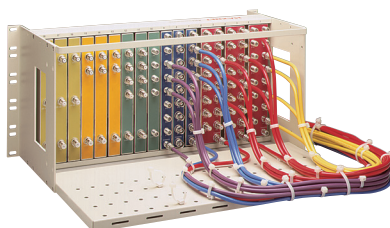


## Cable Management Options

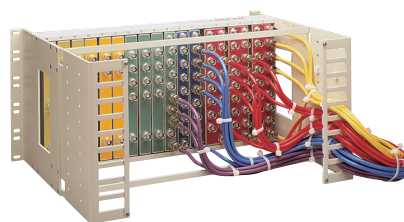
- Cable management bars (for all chassis)
- Cable management tray (front mount active and passive chassis)
- Cable management ears (front mount active and passive chassis)
- 1RU cable management tray (rear mount 5RU passive chassis)
- 23" rack mount extensions



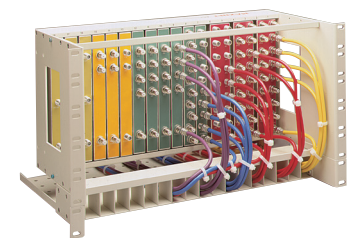
**MN1 Front Mount Chassis  
with Cable Management Bar**  
(rear view)



**MN5T Front Mount Chassis  
with Cable Management Tray**  
(rear view)



**MN5E Front Mount Chassis  
with Cable Management Ears**  
(rear view)



**MN5R Rear Mount Chassis pictured  
with but not including MN1RK, 1RU  
Cable Management Tray**  
(front view)

## Chassis & Cable Management Options

### Specifications

#### Chassis

PHYSICAL		
MN1	DIMENSIONS	1RU: 1.75"H x 19.0"W x 10.0"D (4.45H x 48.26W x 25.4D)
	WEIGHT	1.5 lbs (0.86 kg)
MN1RK	DIMENSIONS	1RU: 1.75"H x 19.0"W x 11.5"D (4.45H x 48.26W x 29.2D cm)
	WEIGHT	4.63 lbs (2.1 kg)
MN3	DIMENSIONS	3RU: 5.25"H x 19.0"W x 8.8"D (13.34H x 48.26W x 22.35D cm)
	WEIGHT	3.37 lbs (1.53 kg)
MN5B	DIMENSIONS	5RU: 8.75"H x 19.0"W x 8.5"D (22.23H x 48.26W x 21.59D cm)
	WEIGHT	7.9 lbs (3.6 kg)
MN5E	DIMENSIONS	5RU: 8.75"H x 19.0"W x 13.0"D (22.23H x 48.26W x 33.0D cm)
	WEIGHT	12.2 lbs (5.53 kg)
MNEAR	DIMENSIONS	8.5"H x 2.25"W x 6.8"D (21.6H x 5.7W x 17.27D cm)
	WEIGHT	3.85 lbs (1.75 kg)
MN5R	DIMENSIONS	5RU: 8.75"H x 19.0"W x 8.0"D (22.23H x 48.26W x 20.32D cm)
	WEIGHT	7.89 lbs (3.58 kg)
MN5T	DIMENSIONS	5RU: 8.75"H x 19.0"W x 14.5"D (22.23H x 48.26W x 36.83D cm)
	WEIGHT	10.47 lbs (4.75 kg)
MN23EX	DIMENSIONS	0.125"H x 8.75"W x 2.7"D (0.32H x 22.23W x 6.86D cm)
	WEIGHT	1.48 lbs (0.67 kg)
MN5BA	DIMENSIONS	5RU: 8.75"H x 19.0"W x 8.5"D (22.23H x 48.26W x 21.59D cm) (without cable management)
	WEIGHT	8.33 lbs (3.78 kg)
MN5TA	DIMENSIONS	5RU: 8.75"H x 19.0"W x 14.5"D (22.23H x 48.26W x 36.83D cm)
	WEIGHT	10.9 lbs (4.95 kg)
MN5BEX	DIMENSIONS	5RU: 8.75"H x 19"W x 13.5"D (22.23H x 48.26W x 34.29D cm)
	WEIGHT	7.67 lbs (3.48 kg)

### Ordering Information

Part Number	Description
MN1	1RU 19" Horizontal Chassis
MN1RK	1RU 19" Cable Management Kit (to be used with MN5R)
MN3	3RU 19" Horizontal Chassis
MN5B	5RU 19" Vertical Chassis with Two Cable Bars
MN5E	5RU 19" Vertical Chassis, Front Mount with Cable Management Ears
MNEAR	Cable Management Ears for MAXNET® Chassis
MN5R	5RU 19" Vertical Chassis, Rear Mount
MN5T	5RU 19" Vertical Chassis, Front Mount with Cable Management Tray
MN23EX	23" Rack Mount Extensions
MN5BA	5RU 19" Vertical POWER/ACTIVE Chassis, Front Mount with Two Cable Bars
MN5TA	5RU 19" Vertical POWER/ACTIVE Chassis, Front Mount with Management Tray
MN5BEX	5RU 19" Vertical Chassis with Extended Cable Bars

MAXNET® is a registered trademark of ATX in the United States and/or other countries. Products or features contained herein may be covered by one or more U.S. or foreign patents. Other non-ATX product and company names mentioned in this data sheet are the property of their respective companies.

MAXNET specifications are only valid when ATX plug-in pads and EQs are used.

© 2019 by ATX Networks Corp. and its affiliates (collectively "ATX Networks Corp."). All rights reserved. This material may not be published, broadcast, rewritten, or redistributed. Information in this document is subject to change without notice. Rev. 10/19 (ANW0592)



ATX Networks

Tel: 289.204.7800 | Toll-Free: 866.YOUR.ATX | support@atx.com