



NETGEAR®

**Al passo con il
progresso**
Catalogo prodotti
2015

Indice dei contenuti

Soluzioni di mercato 1

Soluzioni per il Business 5

Prodotti

Switch

ProSAFE® Unmanaged	10
ProSAFE Plus	13
ProSAFE Smart	15
ProSAFE Managed	20
NETGEAR® M6100 Series Chassis Switches	24
ProSAFE Modules & Accessories for Switches	25

Wireless

ProSAFE Wireless Management Systems	27
ProSAFE Access Points	28
ProSAFE Antennas	30

Sicurezza

VPN Client Software	31
ProSAFE VPN Firewalls	32

Storage

ReadyNAS® Comparison Chart	36
ReadyDATA®	40

Backup e Disaster Recovery

ReadyRECOVER®	41
---------------	----

Supporto, Garanzie e Management 45



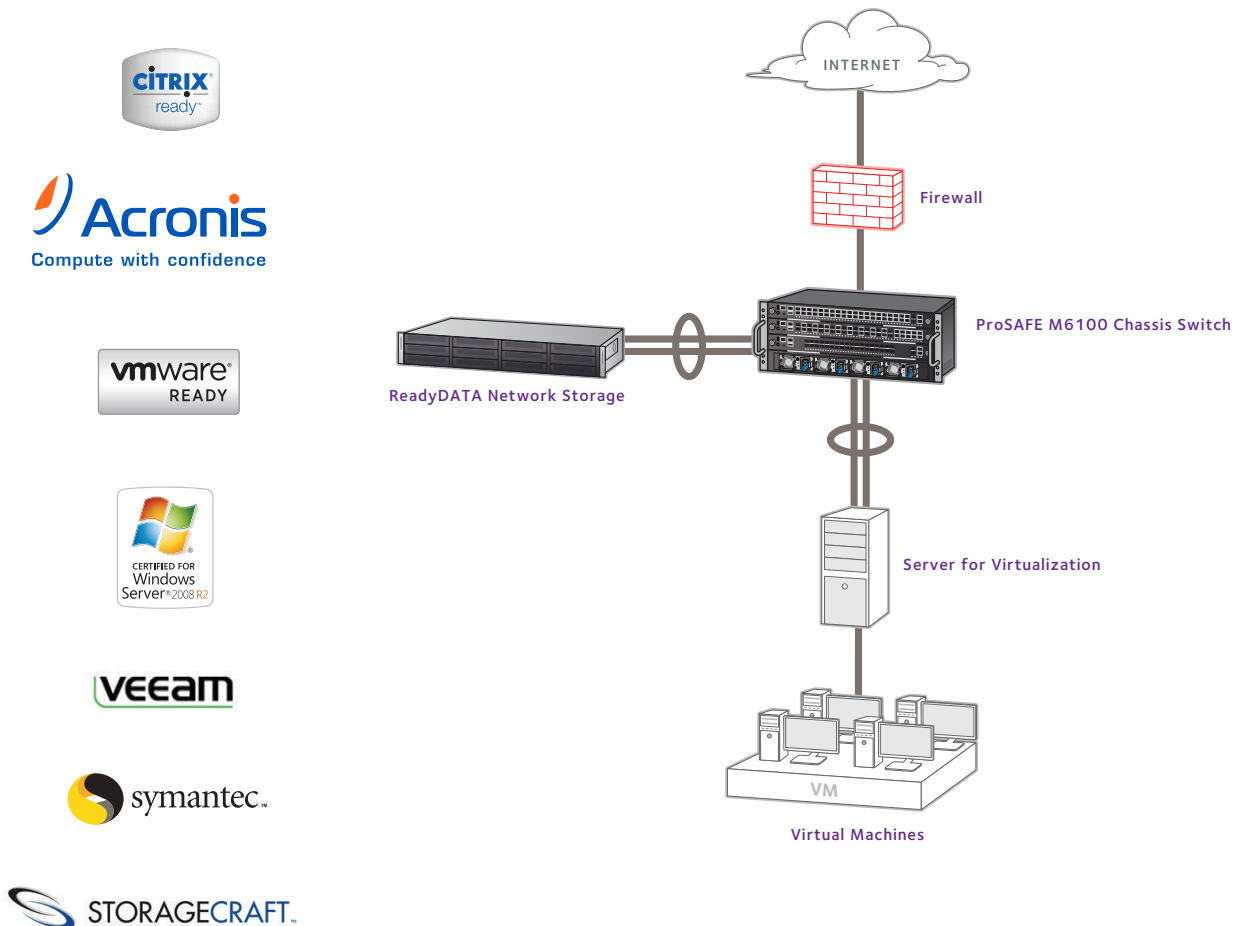
Soluzioni di mercato

Virtualizzazione

Gartner segnala che lo sviluppo di processi di Virtualizzazione è in continua crescita. Sviluppando strutture virtuali si abbattano i costi d'implementazione ed espansione della rete, facendo leva sull'infrastruttura di rete esistente.

Le soluzioni NETGEAR permettono di:

- Condividere le piattaforme di storage anche in piccoli uffici o sedi remote
- Effettuare il backup e la replica dei dati in ambienti virtualizzati
- Sfruttare la connessione 10GB per gli smart o i managed switch, con possibilità di stacking
- Proteggere la rete e i dispositivi dalle minacce provenienti dal web
- Beneficiare della sostituzione NBD e l'estensione della garanzia a tutti i dispositivi di rete



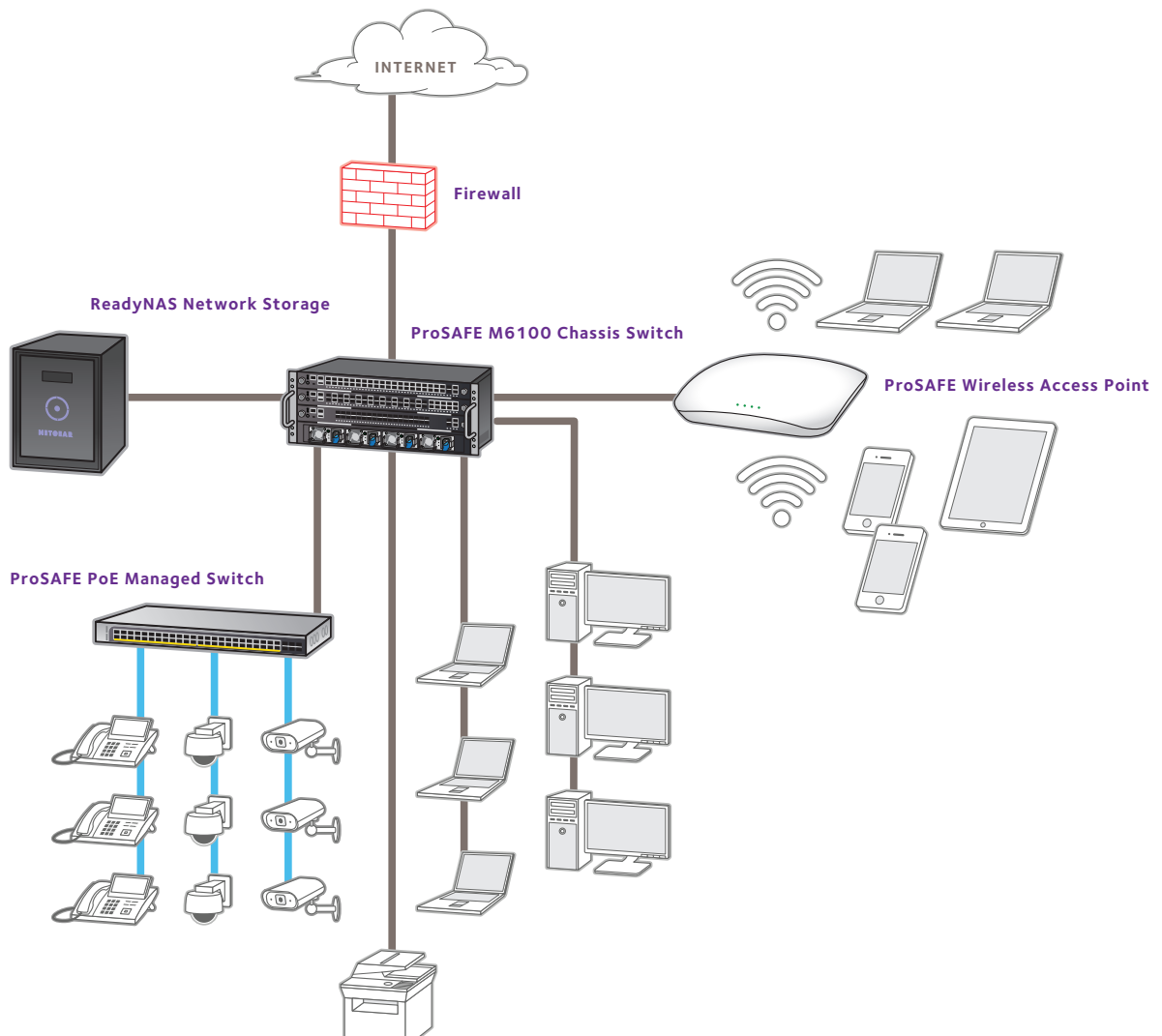
Soluzioni di mercato

Cloud Computing

Il volume del fatturato dei Servizi Cloud quadruplicerà nel 2015 e saranno utilizzati soprattutto dalle PMI. I servizi in-the-cloud permettono di semplificare e ridurre i costi per la gestione dell'infrastruttura IT, senza sacrificare le prestazioni e l'affidabilità della rete.

Le soluzioni NETGEAR offrono:

- Hybrid cloud per la condivisione di file ovunque ci si trovi
- Replica offsite per il disaster recovery (addebitato mensilmente)
- Connessione a internet sicura, indipendentemente dal provider e dai contenuti



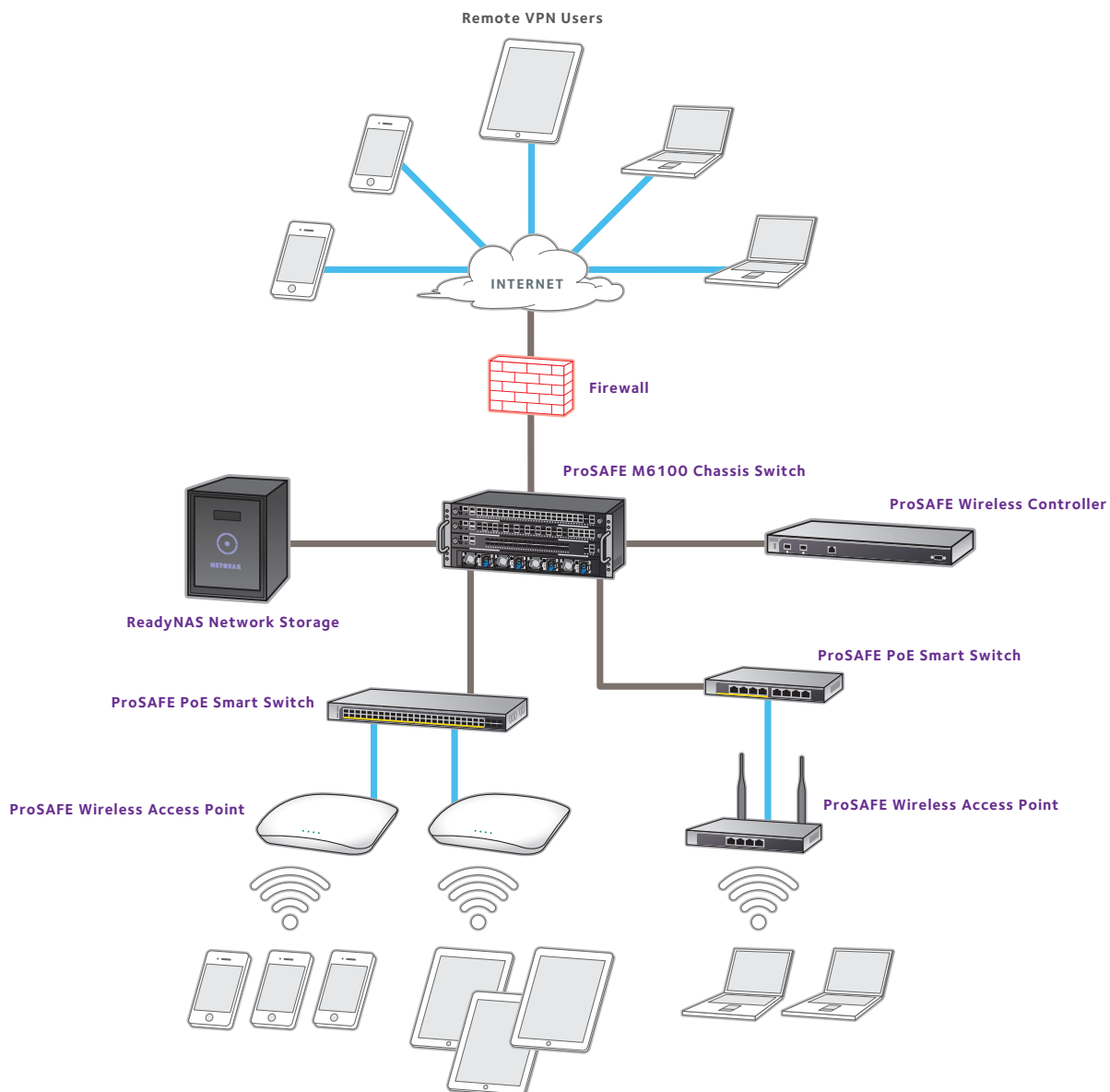
Soluzioni di mercato

Mobility

La rivoluzione dei dispositivi mobili è ormai in atto, e gli utenti richiedono accessi come mai prima. Per i nostri clienti la connettività è la parte più semplice, ma la gestione della rete è altrettanto importante e spesso trascurata. Progetti intelligenti di mobilità rendono la connettività e la gestione semplice e affidabile.

Le soluzioni NETGEAR offrono:

- Rete wireless affidabile per supportare il traffico Voice, video e dei dati
- Stand-alone software, appliance o wireless controller scalabili a seconda delle esigenze dei clienti
- Power-over-Ethernet (PoE) integrato sugli switch per alimentare tutti i dispositivi installati
- Gestione centralizzata degli Access Point, dei controller e degli switch
- Supporto NBD e l'estensione della garanzia a tutti i dispositivi di rete



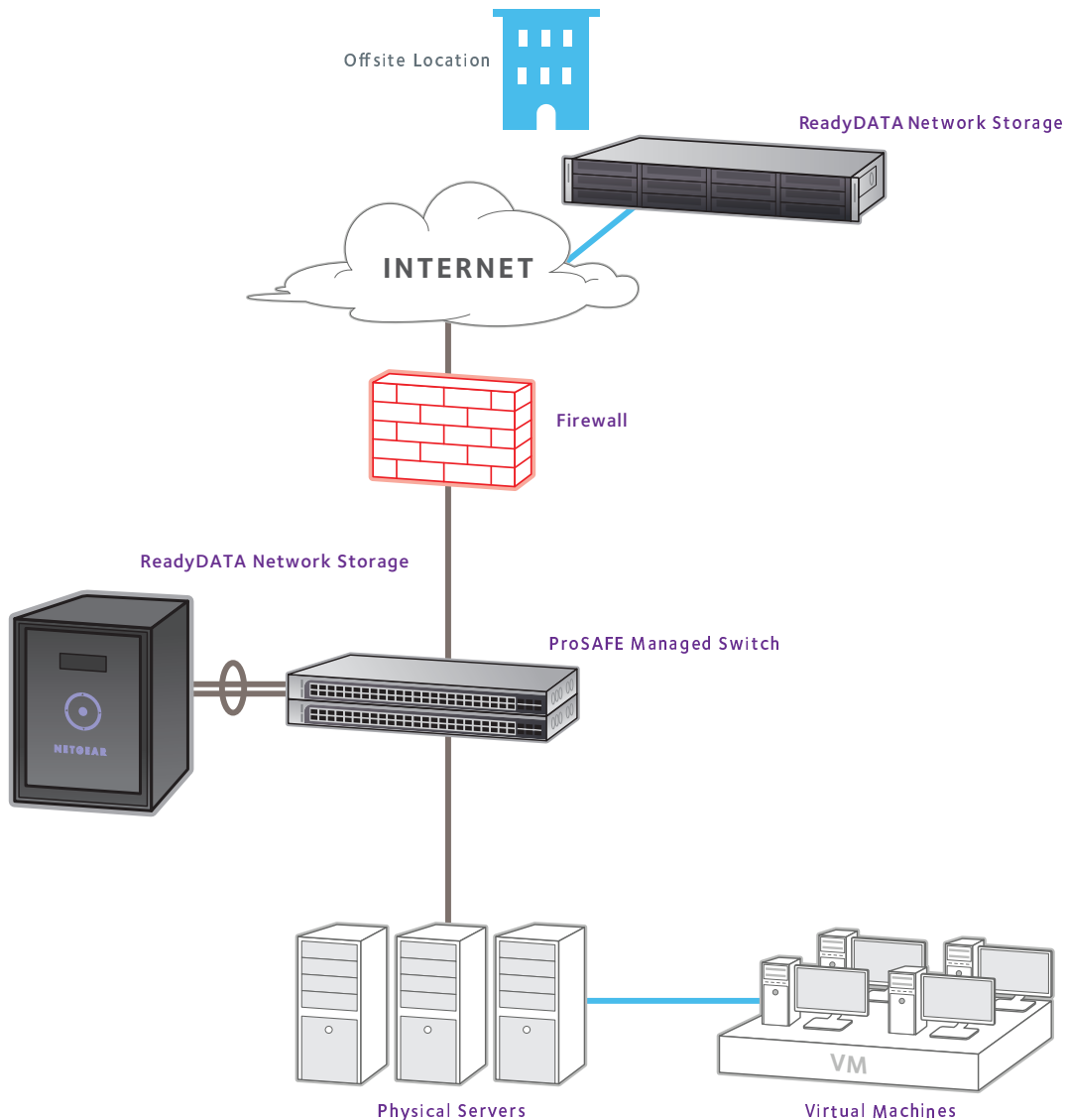
Soluzioni di mercato

Backup to Disk

Le soluzioni di storage su nastro sono lente per la memorizzazione e per il recupero dei dati. In tutto il panorama IT, quindi i sistemi di storage su disco hanno sostituito quelli su nastro. I sistemi basati su disco si sono così affermati sul mercato per la loro affidabilità e i prezzi contenuti. Questo a il momento per le PMI di sfruttare i vantaggi di questo nuovo metodo di backup e ripristino dei dati.

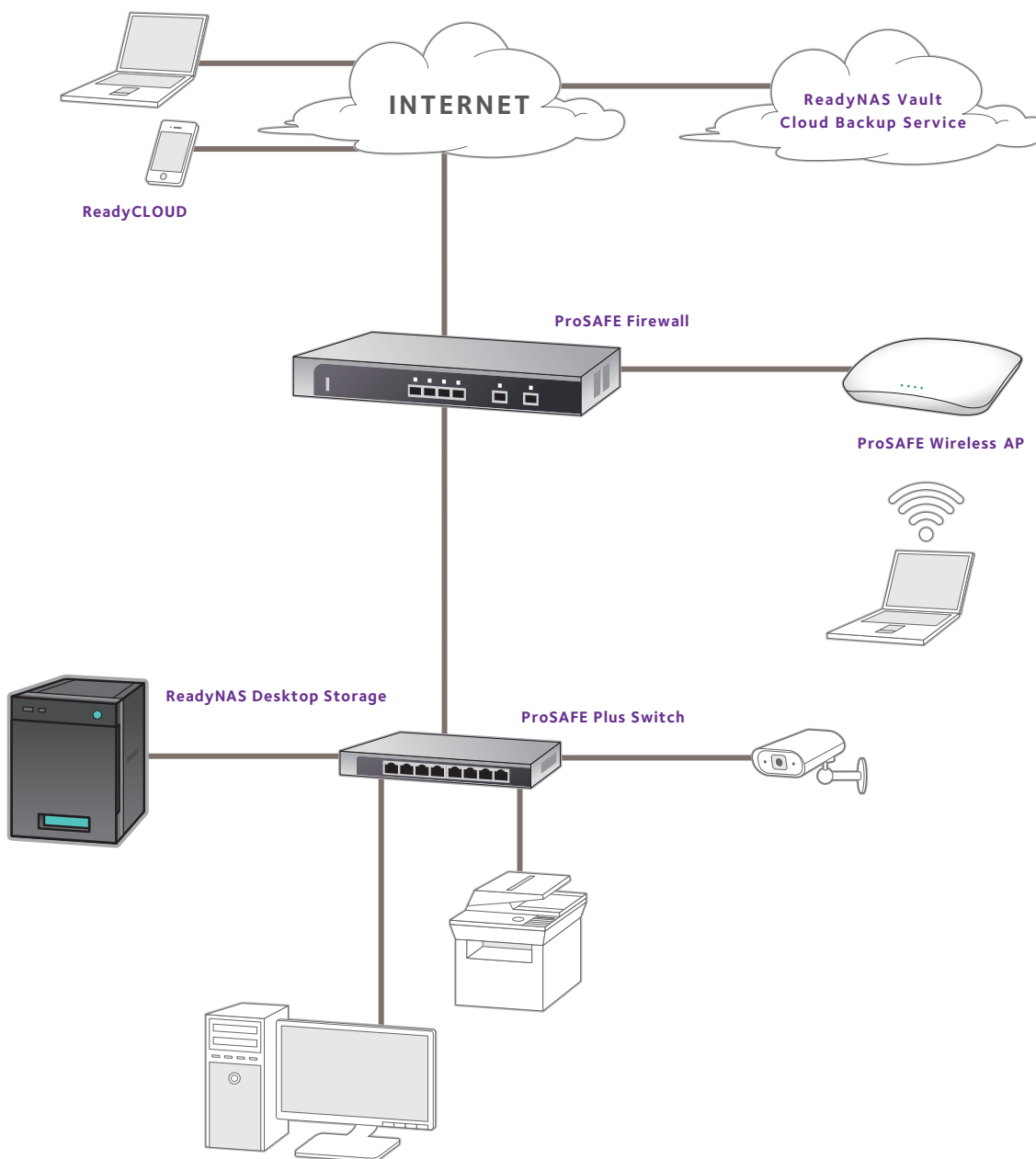
Le soluzioni NETGEAR offrono:

- Backup dei dati più affidabile di quello su nastro
- Elevata capacità di storage e possibilità di espansione dei dischi on fly
- Un processo di backup più semplice da gestire, che non necessita di corsi di formazione
- Un sistema ottimizzato per il supporto di ambienti virtualizzati
- Backup automatici che necessitano di una gestione minima



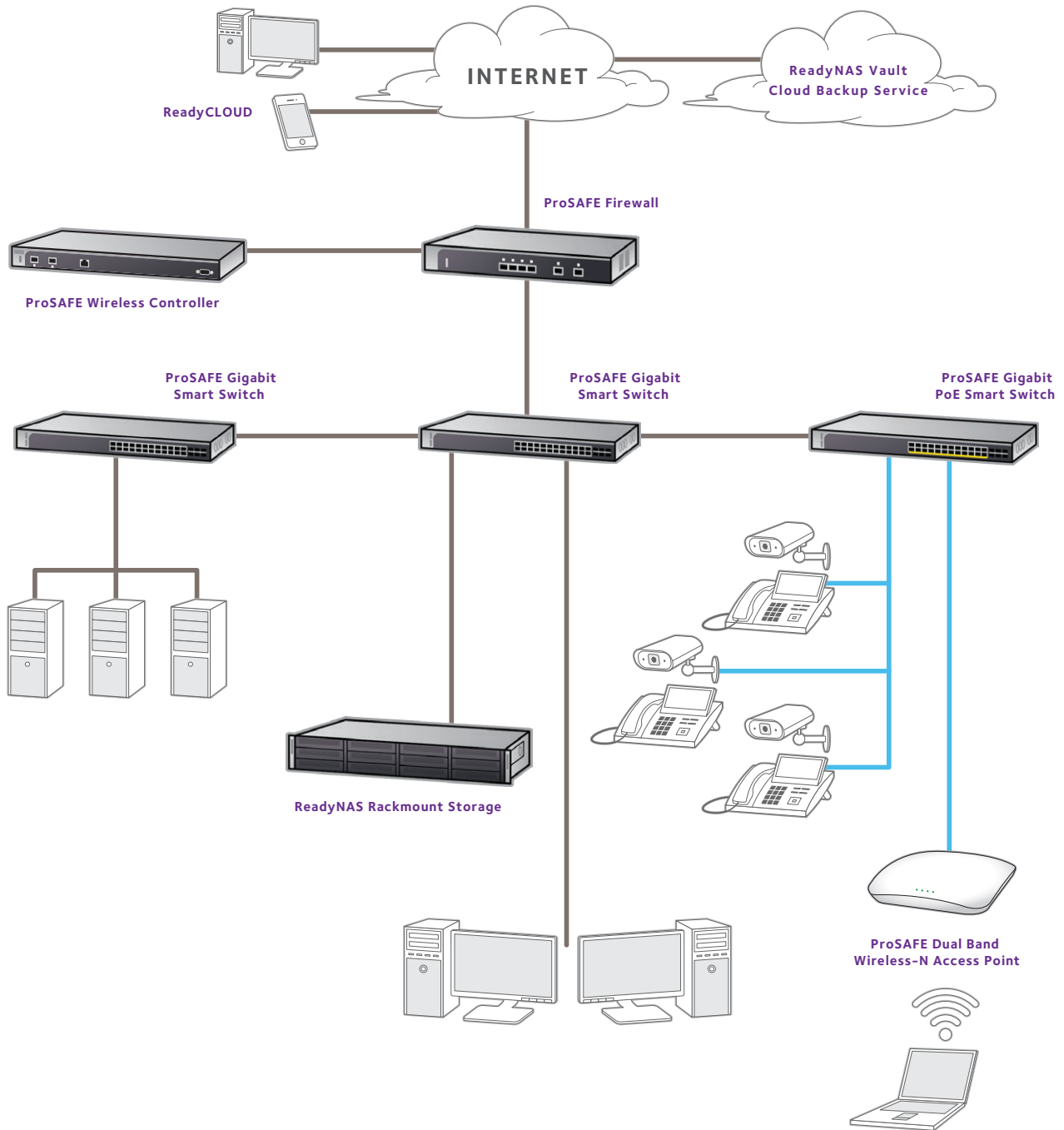
Soluzioni di rete per Small Office e Home Office (SoHo), 1-5 Utenti

Schema di rete



Soluzioni di rete per piccole imprese, 5-75 Utenti

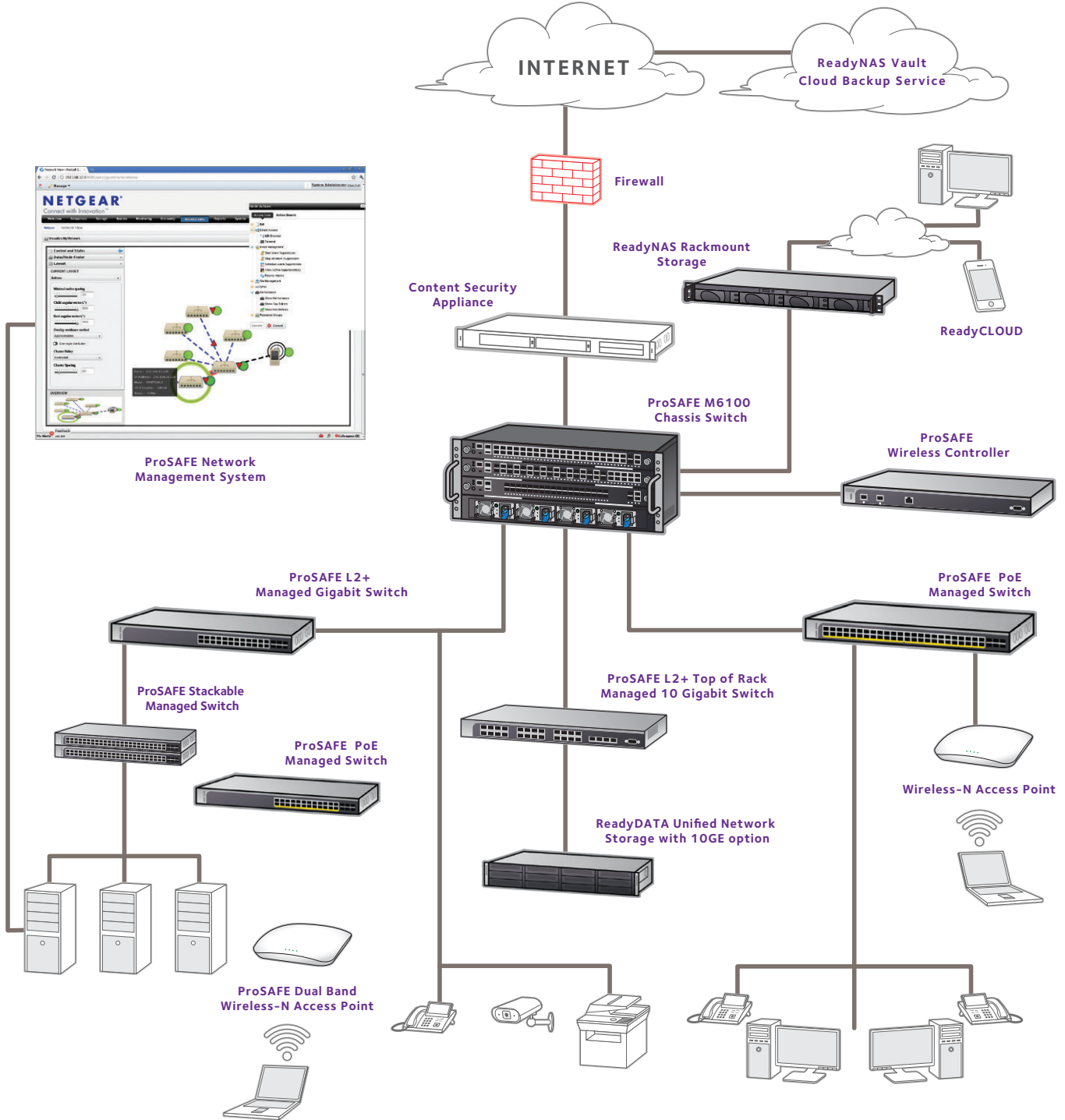
Schema di rete





Soluzioni di rete per aziende di medie dimensioni, 75-250 utenti

Schema di rete



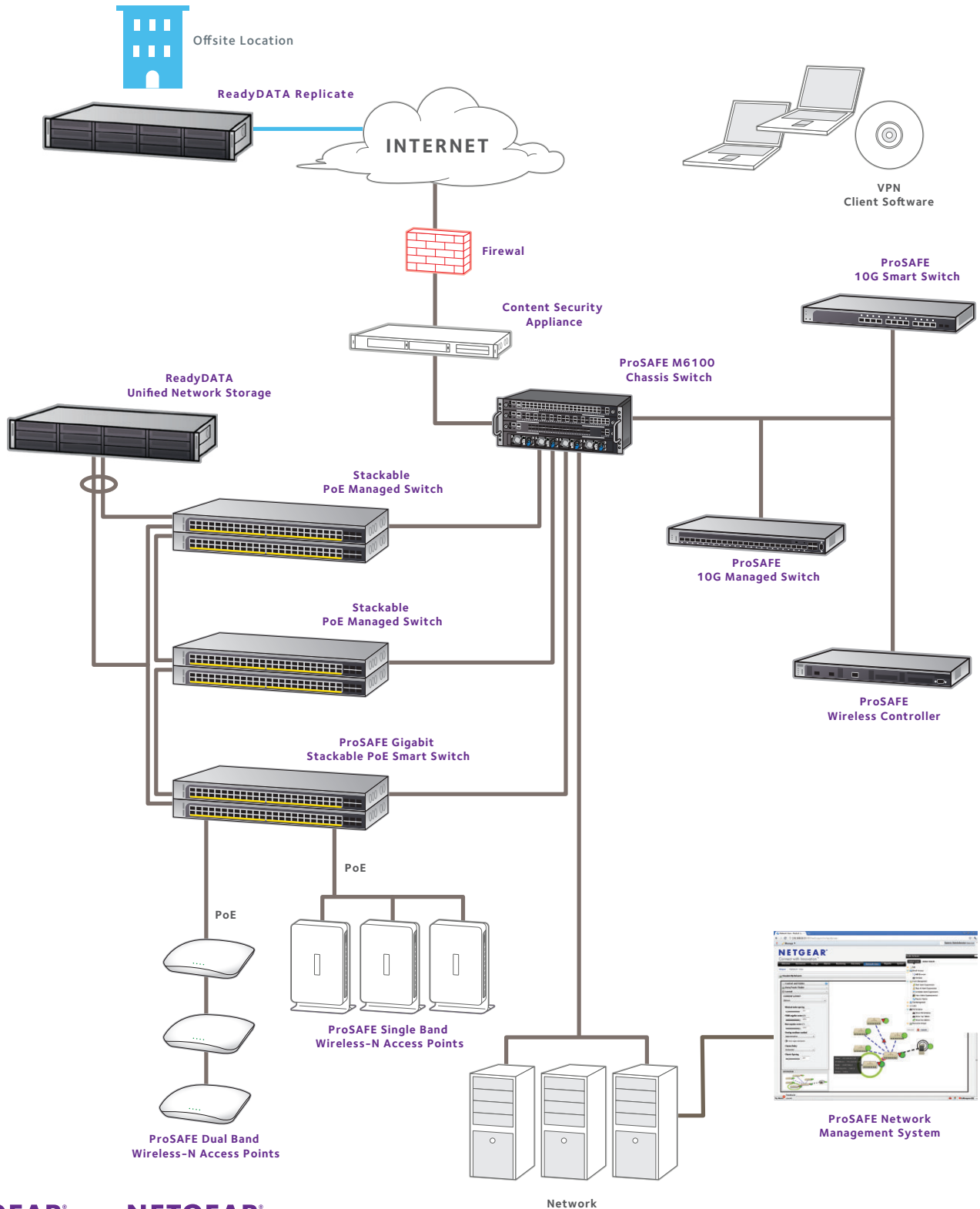
NETGEAR
ProSAFE

NETGEAR
ReadyNAS



Soluzioni di rete per aziende di livello enterprise, 250-500+ utenti

Schema di rete



SwitchProSAFE

NETGEAR fornisce una linea completa di switch di rete affidabili, a prezzi accessibili e un'ampia gamma di applicazioni - dagli switch desktop 5 porte, per utenti finali e piccoli uffici, agli switch managed rackmountable di fascia alta per le grandi imprese e i service provider, NETGEAR offre soluzioni di switch innovative senza il costo e la complessità dei grandi apparati IT.

Per le piccole e medie imprese

Gli switch ProSAFE Unmanaged di NETGEAR offrono connettività "plug-and-play" per le soluzioni di reti delle PMI. NETGEAR fornisce una gamma completa di switch Unmanaged per qualsiasi necessità di implementazione della rete - dagli switch Fast Ethernet a quelli Gigabit, da 5 a 24 porte e con funzionalità PoE. Tutti gli switch ProSAFE Unmanaged di NETGEAR offrono qualità, affidabilità e prestazioni elevate.

Per le aziende che necessitano di maggiore flessibilità, gli switch ProSAFE Plus rappresentano la soluzione ideale. Con l'aggiunta di funzionalità di visibilità e controllo della connettività plug-and-play rispetto agli switch Unmanaged, i ProSAFE Plus consentono alle piccole imprese di monitorare e configurare le proprie reti via web a prezzi veramente competitivi.

Gli smart switch ProSafe di NETGEAR offrono una soluzione conveniente per le piccole e medie imprese che necessitano di un insieme di funzionalità di rete e di gestione web based. NETGEAR offre una vasta gamma di smart switch ProSafe per supportare le diverse esigenze di networking, tra cui Fast Ethernet, Gigabit fino alle implementazioni di rete 10 Gigabit, così come la funzionalità PoE e di stacking. Gli smart switch ProSAFE rappresentano la soluzione ideale sia per l'aggiornamento della rete precedente che per lo sviluppo delle reti VoIP e IP di sorveglianza.

Per aziende di grandi dimensioni

Le grandi aziende richiedono alti livelli di stabilità e affidabilità della rete e gli switch ProSafe Managed di NETGEAR offrono loro una combinazione imbattibile di prestazioni, sicurezza, e convergenza di voce, video e dati. Inoltre, gli Switch ProSAFE Managed offrono la tecnologia state-of-the-art integrata per soluzioni di networking avanzate: le serie M5300 e M4100 reinventano il livello d'accesso unificato alla rete di grandi imprese, enti ospedalieri e campus scolastici, con alta disponibilità (alimentatori aggiuntivi RPS/EPS) e ampia scalabilità (porte PoE/PoE+); le serie M7300 e M7100 racchiudono le più avanzate funzionalità software e caratteristiche tecniche hardware per supportare connessioni 10Gigabit sia in fibra (slot per moduli SFP+) sia in rame (porte ethernet 10GBASE-T); e la serie di Chassis Switch M8800 per consolidare più infrastrutture di rete in una gestione centralizzata ultra-affidabile.

Categoria degli Switch

Unmanaged & PLUS Switch –

Come leggere i codici prodotto



- Unmanaged & Plus Rackmountable Switches
- Fast Ethernet
- Number of Ports
- PLUS



- Gigabit Ethernet
- Click Switch
- 1 Series Desktop Switches
- Number of Ports
- PoE

Smart Switch –

Come leggere i codici prodotto



- Fast Ethernet
- 7 Series Rackmountable Switches
- Number of Ports
- Smart Switches
- PoE



- Gigabit Ethernet
- 7 Series Rackmountable Switches
- Number of Ports
- Smart Switches
- PoE
- Stackable

Switch Full Managed –

Come leggere i codici prodotto



- Gigabit Ethernet
- Fully Managed
- 7 Series Rackmountable Switches
- Layer 3
- Number of Ports
- Stackable



- 10 Gigabit Ethernet
- Fully Managed
- 7 Series Rackmountable Switches
- Layer 2+
- Number of Ports
- Stackable

ProSAFE Switch



MODEL		
Port Configuration	10/100 RJ45 Ports (Auto Uplink)	
	10/100/1000 RJ45 Ports (Auto Uplink)	
	Fiber Ports	
	10Gig Module Bays	
PoE	Power Over Ethernet 802.3af Ports	
	PoE Plus (30W) 802.3at Ports	
	Total PoE Budget	
Stacking	Number of Dedicated Stacking Ports	
	Stacking Bandwidth	
	Stacking (maximum capacity)	
	Stacking Compatibility	
Scalability	# MAC Addresses	
	ARP Table – Size of	
	# Routing Entries	
	# ACL Rules	
System Management	Single IP Management	
	Web Managed/GUI	
	Command Line Interface/RS232 Console/Telnet	
	SNMP Version	
	RMON Group	
	DHCP (Client/Server)	
	Port Mirroring	
	IPv6 full set	
	Quality of Service	Number of Priority Queues
		Traffic Prioritization
Multicast Filtering	Auto Voice VLAN	
	IGMP Snooping Version	
Performance	IGMP Snooping Querier	
	Bandwidth	
Availability	Buffer Memory	
	Jumbo Frames	
	Spanning Tree 802.1d/RSTP .1w/MSTP .1s	
Traffic Management	RPS Redundant Power Supply	
	Modular Power Supply	
L3 Routing	Number of 802.1q VLAN/Number of VLAN Group	
	Link Aggregation 802.3ad/LACP	
	Discovery Protocol LLDP 802.1ab	
	Rate Limiting	
	Broadcast Storm Control	
	IPv4 Static Routing	
Security	IPv4 RIPv1/2, OSPFv1/2, VRRP, EMCP	
	IPv6 Static Routing, IPv6 OSPFv3	
	IPv4 / IPv6 Multicast Routing PIM-SM/DM	
	IEEE 802.1x (RADIUS)	
	ACL - Access Control Lists	
	SSL/SSH & HTTPS	
Energy Efficiency	Guest VLAN	
	DHCP Snooping/IP Source Guard/ARP Guard	
	TACACS+	
	EEE 802.3az	
Physical	Auto Port Power Down	
	Dynamic Power Consumption	
	Max Power Consumption	
	Desktop/Rackmount/Click	
	Metal/Plastic Enclosure	
	MTBF	
Electromagnetic Compliance	Acoustic Noise at 25°C	
	Fan	
	Width x Depth x Height	
Warranty Hardware*	Weight	
	Class (A or B)	
Warranty Power Supply	Warranty Hardware*	
	modules	
ProSUPPORT Maintenance PKGS***	On Call 3-year 24 x 7	



Unmanaged, L2, 10/100 Fast Ethernet

FS105	FS108	FS108P	GREEN	FS116	FS116P	GREEN	JFS516	GREEN	JFS524	GREEN
5	8	8		16	16		16		24	
		4			8					
		53 Watts			70 Watts					
2,000	2,000	1,000		4,000	4,000		8,000		8,000	
		2		2	2		4		4	
		Honors 802.1p Priority Tags		Honors 802.1p Priority Tags	Honors 802.1p Priority Tags		Honors 802.1p Priority Tags		Honors 802.1p Priority Tags	
1 Gbps	1.6 Gbps	1.6 Gbps		3.2 Gbps	3.2 Gbps		3.2 Gbps		4.8 Gbps	
64 KB Per System	96 KB Per System	96 KB Per System		160 KB Per System	160 KB Per System		250 KB Per System		1.25 MB Per System	
		Supports			Supports		Supports		Supports	
		Supports								
		Based on Cable Length			Based on Cable Length		Based on Cable Length		Based on Cable Length	
0.9 Watts	1.0 Watts	Only 3.1 Watts. PoE Delivery-56.1 Watts Max		5.5 Watts	70 Watts		2.7 Watts		4 Watts	
D	D	D		D	D		R		R	
M	M	M		M	M		M		M	
4,262,794 Hours	4,015,496 Hours	927,000 Hours		4,046,880 Hours	2,453,117 Hours		2,956,082 Hours		2,940,540 Hours	
94 x 101 x 27 mm (3.7 x 4.0 x 1.1 in.)	158 x 102 x 27 mm (6.2 x 4.1 x 1.1 in.)	235 x 103 x 7mm (9.3 x 4.0 x 1.1 in.)		285 x 102 mm (11.2 x 4.0 x 1.1 in.)	287 x 103 x 27 mm (11.3 x 4.1 x 1.1 in.)		280 x 126 x 44 mm (11.0 x 5.0 x 1.7 in.)		280 x 126 x 44 mm (11.0 x 5.0 x 1.7 in.)	
0.26 kg (0.57 lb)	0.49 kg (1.1 lb)	0.39 kg (0.86 lb)		0.80 kg (1.8 lb)	0.9 kg (2.0 lb)		0.92 Kg (2.03 lbs)		1.00 Kg (2.20 lbs)	
B	B	B		A	A		A		A	
Lifetime	Lifetime	Lifetime		Lifetime	Lifetime		Lifetime		Lifetime	
2 Year	2 Year	2 Year		2 Year	2 Year		Lifetime		Lifetime	
PMB0331	PMB0331	PMB0331		PMB0331	PMB0331		PMB0331		PMB0331	



*Including Lifetime Next Business Day Hardware Replacement (For a list of countries where service is available, and terms and conditions visit <http://nbd.netgear.com>).
 ** Including ProSUPPORT Lifetime 24x7 Advanced Technical Support via chat.
 *** 90-day ProSUPPORT 24x7 Advanced Technical Support via phone can be extended by purchasing one, three, or five year On Call contracts.

ProSAFE Switch



		Unmanaged, L2, Gigabit		
MODEL		GS105	GS108	JGS516
Port Configuration	10/100 RJ45 Ports (Auto Uplink)			
	10/100/1000 RJ45 Ports (Auto Uplink)	5	8	16
	Fiber Ports			
	10Gig Module Bays			
PoE	Power Over Ethernet 802.3af Ports			
	PoE Plus (30W) 802.3at Ports			
	Total PoE Budget			
Stacking	Number of Dedicated Stacking Ports			
	Stacking Bandwidth			
	Stacking (maximum capacity)			
	Stacking Compatibility			
Scalability	# MAC Addresses	4,000	4,000	8,000
	ARP Table – Size of			
	# Routing Entries			
	# ACL Rules			
System Management	Single IP Management			
	Web Managed/GUI			
	Command Line Interface/RS232 Console/Telnet			
	SNMP Version			
	RMON Group			
	DHCP (Client/Server)			
	Port Mirroring			
	IPv6 full set			
Quality of Service	Number of Priority Queues	4	4	4
	Traffic Prioritization	Honors 802.1p priority tags	Honors 802.1p priority tags	Honors 802.1p priority tags
	Auto Voice VLAN			
Multicast Filtering	IGMP Snooping Version			
	IGMP Snooping Querier			
Performance	Bandwidth	10 Gbps	16 Gbps	32 Gbps
	Buffer Memory	128 KB Per System	192 KB Per System	250 KB Per System
	Jumbo Frames	•	•	•
Availability	Spanning Tree 802.1d/RSTP .1w/MSTP .1s			
	RPS Redundant Power Supply			
	Modular Power Supply			
Traffic Management	Number of 802.1q VLAN/Number of VLAN Group			
	Link Agregation 802.3ad/LACP			
	Discovery Protocol LLDP 802.1ab			
	Rate Limiting			
	Broadcast Storm Control			
L3 Routing	IPv4 Static Routing			
	IPv4 RIPv1/2, OSPFv1/2, VRRP, EMCP			
	IPv6 Static Routing, IPv6 OSPFv3			
	IPv4 / IPv6 Multicast Routing PIM-SM/DM			
Security	IEEE 802.1x (RADIUS)			
	ACL – Access Control Lists			
	SSL/SSH & HTTPS			
	Guest VLAN			
	DHCP Snooping/IP Source Guard/ARP Guard			
Energy Efficiency	EEE 802.3az	Supports	Supports	Supports
	Auto Port Power Down	•	•	•
	Dynamic Power Consumption			
	Max Power Consumption	3.67 Watts	4.86 Watts	11.8 Watts
Physical	Desktop/Rackmount/Click	D	D	R
	Metal/Plastic Enclosure	M	M	M
	MTBF	8,815,772 Hours	1,044,500 Hours	441,123 Hours
	Acoustic Noise at 25°C			
	Fan			
	Width x Depth x Height	99 x 102 x 27 mm (3.7 x 4.1 x 1.1 in.)	158 x 101 x 27 (6.2 x 4.0 x 1.1 in.)	328 x 169 x 43 mm (12.9 x 6.7 x 1.7 in.)
	Weight	0.264 kg (0.58 lb)	0.52 kg (1.15 lb)	1.47 kg (3.57 lb)
Electromagnetic Compliance	Class (A or B)	A	B	A
Warranty Hardware*		Lifetime	Lifetime	Lifetime
Warranty Power Supply		2 Year	2 Year	Lifetime
Modules				
ProSUPPORT Maintenance PKGS***	On Call 3-year 24 x 7	PMB0331	PMB0331	PMB0331





ProSAFE plus, L2, Gigabit					
JGS524	GS105EV2	GS105PE	GS108EV3	GSS108E NEW GREEN	GS108PEV3
24	5	5	8	8	8
					4
					45W
8,000	8,000	8,000	4,000	8,000	4,000
	•	•		•	
	DHCP Client Many-to-One	DHCP Client Many-to-One	DHCP Client Many-to-One	DHCP Client Many-to-One	DHCP Client Many-to-One
4	4	4	4	4	4
Honors 802.1p priority tags	802.1p, Port-based and DSCP	802.1p, Port-based and DSCP	802.1p, Port-based	802.1p, Port-based	802.1p, Port-based
	v1, v2 and v3	v1, v2 and v3	v1, v2 and v3	v1, v2 and v3	v1, v2 and v3
48 Gbps	10 Gbps	10 Gbps	16 Gbps	16 Gbps	16 Gbps
250 KB Per System	128 KB	128 KB	192 KB	2 Mb	192 KB
	•	•	•	•	•
	64	64	32	64	32
	•	•	•	•	•
	•	•	•	•	•
Supports	•	•	Supports	Supports	Supports
	•	•	•	•	•
	•	•	•	•	•
17.9 Watts	4 Watts	Via PD	4 Watts	20.1 Watts	51.1 Watts
R	D	D	D	C	D
M	M	M	M	P	M
238,832 Hours	5,905,968 Hours		5,701,574 Hours	1,031,177 Hours	3,649,507 Hours
	0 dBA	0 dBA	0		0
			0		0
328 x 169 x 43 mm (12.9 x 8.2 x 1.7 in.)	94 x 104 x 28 mm (3.7 x 3.98 x 1.02 in)	158 x 105 x 27mm (6.22 x 4.13x 1.06 in)	158 x 105 x 27 (6.2 x 4.0 x 1.1 in.)	305x 65x 35 mm (12.0 x 2.6 x 1.4 in)	235 x 103 x 27 mm (9.25 x 4.06 x 1.06 in)
1.65 kg (3.64 lb)	0.27 kg (0.60 lb)	0.45 kg (0.99 lb)	0.55 kg (1.2 lbs)	0.4 kg (0.88 lbs)	0.726 kg (1.6 lbs)
A	B	B	B	B	A
Lifetime	Lifetime	Lifetime	Lifetime	Lifetime	Lifetime
Lifetime	2 Year	2 Year	2 Year	Lifetime	2 Year
PMB0331	PMB0331	PMB0331	PMB0331	PMB0331	PMB0331

*Including Lifetime Next Business Day Hardware Replacement (For a list of countries where service is available, and terms and conditions visit <http://nbd.netgear.com>).

** Including ProSUPPORT Lifetime 24x7 Advanced Technical Support via chat.

*** 90-day ProSUPPORT 24x7 Advanced Technical Support via phone can be extended by purchasing one, three, or five year On Call contracts.

ProSAFE Switch


NETGEAR®
ProSAFE®

ProSAFE plus, L2, Gigabit

MODEL	GS116E	GREEN	GSS116E	NEW	GREEN	JGS516PE	JGS524E	GREEN
Port Configuration	10/100 RJ45 Ports (Auto Uplink)							
	10/100/1000 RJ45 Ports (Auto Uplink)	16		16		16		24
	Fiber Ports							
	10Gig Module Bays							
PoE	Power Over Ethernet 802.3af Ports					8		
	PoE Plus (30W) 802.3at Ports							
	Total PoE Budget					85W		
Stacking	Number of Dedicated Stacking Ports							
	Stacking Bandwidth							
	Stacking (maximum capacity)							
	Stacking Compatibility							
Scalability	# MAC Addresses	16,000		8,000		16,000		16,000
	ARP Table – Size of							
	# Routing Entries							
	# ACL Rules							
System Management	Single IP Management							
	Web Managed/GUI					•		•
	Command Line Interface/RS232 Console/Telnet							
	SNMP Version							
	RMON Group							
	DHCP (Client/Server)	DHCP Client		DHCP Client		DHCP Client		DHCP Client
	Port Mirroring	Many-to-One		Many-to-One		Many-to-One		Many-to-One
	IPv6 full set							
Quality of Service	Number of Priority Queues	4		4		4		4
	Traffic Prioritization	802.1p, Port-based		802.1p, Port-based		802.1p, Port-based		802.1p, Port-based
	Auto Voice VLAN							
Multicast Filtering	IGMP Snooping Version	v1, v2 and v3		v1, v2 and v3		v1, v2 and v3		v1, v2 and v3
	IGMP Snooping Querier					•		•
Performance	Bandwidth	32 Gbps		32 Gbps		32 Gbps		48 Gbps
	Buffer Memory	6 MB Per System		512 KB		768 KB Per System		768 KB Per System
	Jumbo Frames	•		•		•		•
Availability	Spanning Tree 802.1d/RSTP .1w/MSTP .1s							
	RPS Redundant Power Supply							
	Modular Power Supply							
Traffic Management	Number of 802.1q VLAN/Number of VLAN Group	100		128		100		100
	Link Agregation 802.3ad/LACP			Static LAG				Static LAG
	Discovery Protocol LLDP 802.1ab							
	Rate Limiting	•		•		•		•
	Broadcast Storm Control	•		•		•		•
L3 Routing	IPv4 Static Routing							
	IPv4 RIPv1/2, OSPFv1/2, VRRP, EMCP							
	IPv6 Static Routing, IPv6 OSPFv3							
	IPv4 / IPv6 Multicast Routing PIM-SM/DM							
Security	IEEE 802.1x (RADIUS)							
	ACL - Access Control Lists							
	SSL/SSH & HTTPS							
	Guest VLAN							
	DHCP Snooping/IP Source Guard/ARP Guard							
Energy Efficiency	TACACS+							
	EEE 802.3az	•		Supports		•		•
	Auto Port Power Down	•		•		•		•
	Dynamic Power Consumption	•		•		•		•
Physical	Max Power Consumption	10 Watts		8.4 Watts		110 Watts		13.8 Watts
	Desktop/Rackmount/Click	D		C		R		R
	Metal/Plastic Enclosure	M		M		M		M
	MTBF	504,993 Hours		721,497 Hours		840,354 Hours		243,476 Hours
	Acoustic Noise at 25°C	0		0		24.5 dBA		0
	Fan	0		0		1		0
	Width x Depth x Height	286 x 101 x 26 mm (11.26 x 3.98 x 1.02 in)		407x70x35 mm (16.0 x 2.8 x 1.4 in)		328 x 169 x 43 mm (12.9 x 6.65 x 1.7 in)		328 x 170 x 43 mm (12.9 x 6.9 x 1.7 in)
Weight	0.84 kg (1.85 lb)		1.3 kg (2.87 lb)		1.67 kg (3.68 lb)		1.4 kg (3.09 lb)	
Electromagnetic Compliance	Class (A or B)	A		B		A		A
Warranty Hardware*		Lifetime		Lifetime		Lifetime		Lifetime
Warranty Power Supply		2 Year		Lifetime		Lifetime		Lifetime
Modules								
ProSUPPORT Maintenance PKGS***	On Call 3-year 24 x 7	PMB0331		PMB0331		PMB0331		PMB0331





ProSAFE plus, L2, 10 GIGABIT		Smart Managed, L2, 10/100 Fast Ethernet				
JGS524PE	XS708E	FS526T	FS728TLP	FS728TP	GREEN	FS750T2
24	8 10GBase-T 1 Combo SFP+ (10G)	24 2	24 4 2 SFP	24 4 2 SFP		48 2 2 SFP
12			12	24		
100W			100 Watts	192 Watts		
16,000	32,000	8,000	8,000	4,000		8,000
		128	128	128		
•		•	•	•		•
		v1, v2c, v3 1,2,3,9	v1, v2c, v3 1,2,3,9	v1, v2c, v3 1,2,3,9		v1, v2c
DHCP Client	Client	Client	Client	Client		Client
Many-to-One	Many-to-One	Many-to-One	Many-to-One	Many-to-One		Many-to-One
4	4	8	8	4		4
802.1p, Port-based	802.1p, Port-Based	802.1p and DSCP •	802.1p and DSCP •	802.1p, DSCP, Diffserv •		802.1p
v1, v2 and v3 •	v1, v2 and v3	v1, v2, v3 •	v1, v2, v3 •	v1, v2, v3 •		
48 Gbps	160 Gbps	8.8 Gbps	12.8 Gbps	12.8 Gbps		13.6 Gbps
768 KB Per System •	16 MB Per System	4 MB Per System •	4 MB Per System •	1 MB Per System		256 KB Per System
		802.1d, .1w, .1s	802.1d, .1w, .1s	802.1d, .1w, .1s		80.2.1d
100	64	128	128	128		64
Static LAG	Static LAG	•	•	•		•
•	•	•	•	•		•
•	•	•	•	•		•
		Supports MAC, IP •	Supports MAC, IP •	Supports MAC, IP •		•
•		•	•	•		•
•		•	•	•		•
123 Watts	58.8 Watts	12 Watts	124 Watts	256 Watts		19.65 Watts
R	R	R	R	R		R
M	M	M	M	M		M
643,506 Hours	221,813 Hours	334,168 Hours	755,725 Hours	237,497 Hours		59,880 Hours
24.4 dBA	34.7dBA	0 dBA	30.7 dBA	38.1 dBA		0 dBA
1	2		•	•		
328 x 169 x 43 mm (12.9 x 6.65 x 1.7 in)	330 x 207 x 43 mm (13 x 8.2 x 1.7 in)	326 x 168 x 43 mm (12.83 x 6.61 x 1.7 in)	440 x 204 43 mm (17.3 x 8 x 1.7 in)	440 x 257 x 43 mm (17.3 x 10.1 x 1.7 in)		440 x 205 x 43 mm (17.3 x 8.1 x 1.7 in)
1.84 kg (4.06 lb)	3.6 kg (6.5 lb)	1.35 kg (2.98 lb)	2.92 kg (6.44 lb)	3.6 kg (7.92 lb)		3.2 kg (7.0 lb)
A	A	A	A	A		A
Lifetime	Lifetime	Lifetime	Lifetime	Lifetime		Lifetime
Lifetime	Lifetime	Lifetime	Lifetime	Lifetime		Lifetime
PMB0331	AGM731F/AGM732F; AXM761/ AXM762/AXM763 PMB0331	PMB0331	AGM731F/732F PMB0332	AGM731F/732F PMB0332		AGM731F/732F PMB0331

*Including Lifetime Next Business Day Hardware Replacement (For a list of countries where service is available, and terms and conditions visit <http://nbd.netgear.com>).

** Including ProSUPPORT Lifetime 24x7 Advanced Technical Support via chat.

*** 90-day ProSUPPORT 24x7 Advanced Technical Support via phone can be extended by purchasing one, three, or five year On Call contracts.

ProSAFE Switch



Smart Managed, L2, Gigabit

MODEL	GS108T	GREEN	GS110TP	GREEN	GS510TP	GREEN	GS716T	GREEN
Port Configuration	10/100 RJ45 Ports (Auto Uplink)							
	10/100/1000 RJ45 Ports (Auto Uplink)	8	8	8	16			
	Fiber Ports		2 SFP				2 dedicated SFP	
	10Gig Module Bays							
PoE	Power Over Ethernet 802.3af Ports		8		8			
	PoE Plus (30W) 802.3at Ports							
	Total PoE Budget		46 Watts		130 Watts			
Stacking	Number of Dedicated Stacking Ports							
	Stacking Bandwidth							
	Stacking (maximum capacity)							
	Stacking Compatibility							
Scalability	# MAC Addresses	8,000	8,000	4,000	16,000			
	ARP Table – Size of					512		
	# Routing Entries					32		
	# ACL Rules	64	64	128	100			
System Management	Single IP Management							
	Web Managed/GUI	•	•	•	•		•	
	Command Line Interface/RS232 Console/Telnet							
	SNMP Version	v1, v2c, v3	v1, v2c, v3	v1, v2c, v3	v1, v2c, v3	v1, v2c, v3	v1, v2c, v3	
	RMON Group	1,2,3,9	1,2,3,9	1,2,3,9	1,2,3,9	1,2,3,9	1,2,3,9	
	DHCP (Client/Server)	Client	Client	Client	Client	Client	Client	
	Port Mirroring	Many-to-One	Many-to-One	Many-to-One	Many-to-One	Many-to-One	Many-to-One	
	IPv6 full set							•
Quality of Service	Number of Priority Queues	4	4	4	8			
	Traffic Prioritization	802.1p, DSCP, Diffserv	802.1p, DSCP, Diffserv	802.1p, DSCP, Diffserv	802.1p, DSCP, Diffserv	802.1p, DSCP, Diffserv	802.1p, DSCP, Diffserv	
	Auto Voice VLAN	•	•	•	•		•	
Multicast Filtering	IGMP Snooping Version	v1, v2, v3	v1, v2, v3	v1, v2, v3	v1, v2, v3		v1, v2, v3	
	IGMP Snooping Querier					•		
Performance	Bandwidth	16 Gbps	16 Gbps	20 Gbps	32 Gbps			
	Buffer Memory	512 KB Per Unit	512 KB Per Unit	512 KB Per Unit	2 MB Per System			
	Jumbo Frames	Yes	Yes	•	•			
Availability	Spanning Tree 802.1d/RSTP .1w/MSTP .1s	802.1d, .1w, .1s	802.1d, .1w, .1s	802.1d, .1w, .1s	802.1d, .1w, .1s		802.1d, .1w, .1s	
	RPS Redundant Power Supply							
	Modular Power Supply							
Traffic Management	Number of 802.1q VLAN/Number of VLAN Group	64	64	64	256			
	Link Agregation 802.3ad/LACP	•	•	•	•		•	
	Discovery Protocol LLDP 802.1ab	•	•	•	•		•	
	Rate Limiting	•	•	•	•		•	
	Broadcast Storm Control	•	•	•	•		•	
L3 Routing	IPv4 Static Routing							•
	IPv4 RIPv1/2, OSPFv1/2, VRRP, EMCP							
	IPv6 Static Routing, IPv6 OSPFv3							
	IPv4 / IPv6 Multicast Routing PIM-SM/DM							
Security	IEEE 802.1x (RADIUS)	•	•	•	•		•	
	ACL - Access Control Lists	MAC, IP	MAC, IP	MAC, IP	MAC, IP		MAC, IP	
	SSL/SSH & HTTPS	HTTPS	HTTPS	HTTPS	HTTPS		SSL/HTTPS	
	Guest VLAN	•	•	•	•		•	
	DHCP Snooping/IP Source Guard/ARP Guard							•
	TACACS+	•	•	•	•		•	
Energy Efficiency	EEE 802.3az							•
	Auto Port Power Down	•	•	•	•		•	
	Dynamic Power Consumption							•
	Max Power Consumption	12.78 Watts if powered by PoE via port 18.3 Watts (AC) 6 Watts (DC)		60 Watts		147 Watts		14.4 Watts
Physical	Desktop/Rackmount/Click	D	D	D	R			
	Metal/Plastic Enclosure	M	M	M	M			
	MTBF	275,533 Hours	157,004 Hours	458,124 Hours	726,612 hours			
	Acoustic Noise at 25°C	0 dBA	0 dBA	<38 dBA	0 dBA			
	Fan					•		
	Width x Depth x Height	158 x 105 x 27 mm (6.22 x 4.13 x 1.06 in)	236 x 101.6 x 27 mm (9.3 x 4 x 1.06 in)	328 x 169 x 43 mm (9.3 x 4 x 1.06 in)	43 x 440 x 204 mm (1.7 x 17.3 x 8 in)			
	Weight	0.56 kg (1.23 lb)	0.7Kg (1.54 lb)	1.68Kg (3.7 lb)	2.72 kg (5.99 lb)			
Electromagnetic Compliance	Class (A or B)	A	B	A	A			
Warranty Hardware*	Lifetime	Lifetime	Lifetime	Lifetime	Lifetime			
Warranty Power Supply	Lifetime	Lifetime	Lifetime	Lifetime	Lifetime			
Modules			AGM731F/732F	AGM731F/732F	AGM731F/732F		AGM731F/732F	
ProSUPPORT Maintenance PKGS***	On Call 3-year 24 x 7	PMB0331	PMB0331	PMB0331	PMB0331		PMB0331	





GS516TP	GS724T	GREEN	GS748T	GS728TP	GREEN	GS728TTP	GREEN	GS752TP	GREEN
16	24		48	24		24		48	
	2 dedicated SFP		2 dedicated and 2 combo SFP	4 dedicated SFP		4 dedicated SFP		4 dedicated SFP	
8 POE and 2 PD				24		24		48	
				8		24		8	
76w with AC power, up to 22w with PD power				192 Watts		384 Watts		384 Watts	
8,000	16,000		16,000	8,000		8,000		8,000	
1,024	512		512	1,024		1,024		1,024	
	32		32	32		32		32	
400	100		100	400		400		400	
•	•		•	•		•		•	
v1, v2c, v3	v1, v2c, v3		v1, v2c, v3	v1, v2c, v3		v1, v2c, v3		v1, v2c, v3	
1,2,3,9	1,2,3,9		1,2,3,9	1,2,3,9		1,2,3,9		1,2,3,9	
Client	Client		Client	Client		Client		Client	
Many-to-One	Many-to-One		Many-to-One	Many-to-One		Many-to-One		Many-to-One	
•	•		•	•		•		•	
4	8		8	4		4		4	
802.1p, DSCP, Diffserv	802.1p, DSCP, Diffserv		802.1p, DSCP, Diffserv	802.1p; Diffserv; TCP/UDP		802.1p; Diffserv; TCP/UDP		802.1p; Diffserv; TCP/UDP	
•	•		•	•		•		•	
v1, v2, v3	v1, v2, v3		v1, v2, v3	v1, v2, v3		v1, v2, v3		v1, v2, v3	
•	•		•	•		•		•	
48 Gbps	48 Gbps		100 Gbps	48 Gbps		56 Gbps		104 Gbps	
8 MB Per System	2 MB Per System		2 MB Per System	8 MB Per System		8 MB Per System		8 MB Per System	
•	•		•	•		•		•	
802.1d, .1w, .1s	802.1d, .1w, .1s		802.1d, .1w, .1s	802.1d, .1w, .1s		802.1d, .1w, .1s		802.1d, .1w, .1s	
256	256		256	256		256		256	
•	•		•	•		•		•	
•	•		•	•		•		•	
•	•		•	•		•		•	
•	•		•	•		•		•	
•	•		•	•		•		•	
•	•		•	•		•		•	
MAC, IP	MAC, IP		MAC, IP	MAC, IP		MAC, IP		MAC, IP	
HTTPS	SSL/HTTPS		SSL/HTTPS	HTTPS		HTTPS		HTTPS	
•	•		•	•		•		•	
•	•		•	DHCP Snooping Only		DHCP Snooping Only		DHCP Snooping Only	
•	•		•	•		•		•	
•	•		•	•		•		•	
•	•		•	•		•		•	
•	•		•	•		•		•	
92.1 Watts	17.4 Watts		41.1 Watts	264 Watts		483.5 Watts		512.8 Watts	
R	R		R	R		R		R	
M	M		M	M		M		M	
479,350 Hours	567,680 hours		390,728 Hours	345,901 Hours		247,163 Hours		220,447 Hours	
24.6 dBA	0 dBA		37.2 dBA	31.8 dBA		31.8 dBA		44.9 dBA	
•	•		•	•		•		•	
328 x 169 x 43 mm (12.9 x 6.65 x 1.7 in)	43 x 440 x 204 mm (1.7 x 17.3 x 8 in)		440 x 257 x 43 mm (1.7 x 17.3 x 10.1 in)	440 x 257 x 43 mm (17.3 x 10.1 x 1.7 in)		440 x 257 x 43 mm (17.3 x 10.1 x 1.7 in)		440 x 316 x 43 mm (17.3 x 15.2 x 1.7 in)	
2.21 kg (4.87lb)	2.87 kg (6.33 lb)		3.46 kg/7.63 lb	3.7 kg (8.1 lb)		4.4 kg (8.1 lb)		5.1 kg (14.5 lb)	
A	A		A	A		A		A	
Lifetime	Lifetime		Lifetime	Lifetime		Lifetime		Lifetime	
Lifetime	Lifetime		Lifetime	Lifetime		Lifetime		Lifetime	
	AGM731F/732F		AGM731F/732F	AGM731F/732F		AGM731F/732F		AGM731F/732F	
PMB0332	PMB0331		PMB0331	PMB0332		PMB0332		PMB0332	

*Including Lifetime Next Business Day Hardware Replacement (For a list of countries where service is available, and terms and conditions visit <http://nbd.netgear.com>).

** Including ProSUPPORT Lifetime 24x7 Advanced Technical Support via chat.

*** 90-day ProSUPPORT 24x7 Advanced Technical Support via phone can be extended by purchasing one, three, or five year On Call contracts.

ProSAFE Switch



Smart Managed, L2, Gigabit

MODEL	GS752TSB	GREEN	GS752TPSB	GREEN	S3300-28X (GS728TX)	GREEN NEW	S3300-52X (GS752TX)	GREEN NEW
Port Configuration	10/100 RJ45 Ports (Auto Uplink)							
	10/100/1000 RJ45 Ports (Auto Uplink)	48		48		24 / 2 10GBase-T		48 / 2 10GBase-T
	Fiber Ports	4 SFP		4 SFP		2 SFP+ (10G)		2 SFP+ (10G)
	10Gig Module Bays							
PoE	Power Over Ethernet 802.3af Ports			48				
	PoE Plus (30W) 802.3at Ports			8				
	Total PoE Budget			384 Watts				
Stacking	Number of Dedicated Stacking Ports	2 SFP (2.5G)		2 SFP (2.5G)		2		2
	Stacking Bandwidth	10 Gbps		10 Gbps		40 Gbps		40 Gbps
	Stacking (maximum capacity)	6 units or 300 ports		6 units or 300 ports		6 units or 300 ports		6 units or 300 ports
	Stacking Compatibility	GS7XXTSB/GSXXTPSB		GS7XXTSB/GSXXTPSB		S3300 series		S3300 series
Scalability	# MAC Addresses	16,000		16,000		16,000		16,000
	ARP Table – Size of	1,024		1,024		512		512
	# Routing Entries	32		32		32		32
	# ACL Rules	256		256		480		480
System Management	Single IP Management	•		•		•		•
	Web Managed/GUI	•		•		•		•
	Command Line Interface/RS232 Console/Telnet							
	SNMP Version	v1, v2c, v3		v1, v2c, v3		v1, v2c, v3		v1, v2c, v3
	RMON Group	1,2,3,9		1,2,3,9		1,2,3,9		1,2,3,9
	DHCP (Client/Server)	Client		Client		Client/Server		Client/Server
	Port Mirroring	Many-to-One		Many-to-One		Many-to-One		Many-to-One
	IPv6 full set	•		•		•		•
Quality of Service	Number of Priority Queues	8		8		8		8
	Traffic Prioritization	802.1p		802.1p, DSCP		802.1p; Diffserv; TCP/UDP		802.1p; Diffserv; TCP/UDP
	Auto Voice VLAN	•		•		•		•
Multicast Filtering	IGMP Snooping Version	v1, v2, v3		v1, v2, v3		v1, v2, v3		v1, v2, v3
	IGMP Snooping Querier	•		•		•		•
Performance	Bandwidth	104 Gbps		104 Gbps		128 Gbps		176 Gbps
	Buffer Memory	16 MB Per System		2 MB Per System		2 MB Per System		2 MB Per System
	Jumbo Frames	•		•		•		•
Availability	Spanning Tree 802.1d/RSTP .1w/MSTP .1s	802.1d, .1w, .1s		802.1d, .1w, .1s		802.1d, .1w, .1s		802.1d, .1w, .1s
	RPS Redundant Power Supply							
	Modular Power Supply							
Traffic Management	Number of 802.1q VLAN/Number of VLAN Group	256		256		256		256
	Link Aggregation 802.3ad/LACP	•		•		•		•
	Discovery Protocol LLDP 802.1ab	•		•		•		•
	Rate Limiting	•		•		•		•
	Broadcast Storm Control	•		•		•		•
L3 Routing	IPv4 Static Routing	•		•		•		•
	IPv4 RIPV1/2, OSPFv1/2, VRRP, EMCP							
	IPv6 Static Routing, IPv6 OSPFv3							
	IPv4 / IPv6 Multicast Routing PIM-SM/DM							
Security	IEEE 802.1x (RADIUS)	•		•		•		•
	ACL – Access Control Lists	MAC, IP		MAC, IP		MAC, IP, TCP		MAC, IP, TCP
	SSL/SSH & HTTPS	HTTPS		HTTPS		HTTPS		HTTPS
	Guest VLAN	•		•		•		•
	DHCP Snooping	•		•		•		•
	TACACS+	•		•		•		•
Energy Efficiency	EEE 802.3az	•		•		•		•
	Auto Port Power Down	•		•		•		•
	Dynamic Power Consumption	•		•		•		•
	Max Power Consumption	77 Watts		527 Watts		28.18 Watts		748.18 Watts
Physical	Desktop/Rackmount/Click	R		R		R		R
	Metal/Plastic Enclosure	M		M		M		M
	MTBF	303,219 Hours		206,539 Hours		278,559 hours		147,965 hours
	Acoustic Noise at 25°C	34.8 dBA		42.7 dBA		40 dBA		39 dBA
	Fan	•		•		•		•
	Width x Depth x Height	440 x 257 x 43 mm (17.3 x 11.8 x 1.7 in)		440 x 310 x 43 mm (17.3 x 17.0 x 1.7 in)		440 x 257 x 43 mm (17.32 x 10.13 x 1.7 in)		440 x 257 x 43 mm (17.32 x 10.13 x 1.7 in)
	Weight	4.31 kg (11.38 lb)		5.48 kg (16.02 lb)		3.55 kg (7.8 lb)		3.67 kg (8.1 lb)
Electromagnetic Compliance	Class (A or B)	A		A		A		A
Warranty Hardware*		Lifetime		Lifetime		Lifetime		Lifetime
Warranty Power Supply		Lifetime		Lifetime		Lifetime		Lifetime
Modules		AGM731F/732F/AGC761		AGM731F/732F		AGM731F/AGM732F; AXM761/AXM762/AXM763 /AXC761/AXC763		AGM731F/AGM732F; AXM761/AXM762/AXM763 /AXC761/AXC763; RPS4000 (RPS only)
ProSUPPORT Maintenance PKGS***	On Call 3-year 24 x 7	PMB0331		PMB0332		PMB0332		PMB0332





						Smart Managed, L2, 10 Gigabit	Fully Managed, M4100 series (L2+ with static routing), 10/100 Fast Ethernet	Fully Managed, M4100 series (L2+ with static routing), Gigabit			
S3300-28X-POE+ (GS728TXP)	GREEN NEW	S3300-52X-POE+ (GS752TXP)	GREEN NEW	GS752TXS	GREEN	X5712T	GREEN	M4100-50-POE (FSM7250P)	GREEN	M4100-D12G (GSM5212)	GREEN
24 / 2 10GBase-T		24 / 2 10GBase-T		48		12 10GBase-T		48		12	
2 SFP+ (10G)		2 SFP+ (10G)		4 SFP+ (10G)		2 Combo SFP+ (10G)		2 SFP		4 SFP	
24		48						48			
24		48								1 (PD: powered by PoE+)	
195 Watts / up to 740W with RPS		390 Watts / up to 1,440W with RPS						380W standard / up to 740W with EPS			
2		2		2							
40 Gbps		40 Gbps		40 Gbps							
6 units or 300 ports		6 units or 300 ports		6 units or 300 ports							
S3300 series		S3300 series		GS7xxTXS							
16,000		16,000		16,000		32,000		16,000		16,000	
512		1512		1,024		1,024		512		512	
32		32		32		32		64		64	
480		480		100		100		512		512	
•		•		•		•		•		•	
•		•		•		•		•		•	
v1, v2c, v3		v1, v2c, v3		v1, v2c, v3		v1, v2c, v3		v1, v2c, v3		v1, v2c, v3	
1,2,3,9		1,2,3,9		1,2,3,9		1,2,3,9		1, 2, 3, 9		1, 2, 3, 9	
Client/Server		Client/Server		Client/Server		Client/Server		Client/Server		Client/Server	
Many-to-One		Many-to-One		Many-to-One		Many-to-One		Many-to-One		Many-to-One	
•		•		•		•		•		•	
8		8		8		8		8		8	
802.1p; Diffserv; TCP/UDP		802.1p; Diffserv; TCP/UDP		802.1p; Diffserv; TCP/UDP		802.1p; Diffserv; TCP/UDP		802.1p; Diffserv; TCP/UDP		802.1p; Diffserv; TCP/UDP	
•		•		•		•		•		•	
v1, v2, v3		v1, v2, v3		v1, v2, v3		v1, v2, v3		v1, v2, v3		v1, v2, v3	
•		•		•		•		•		•	
128 Gbps		176 Gbps		176 Gbps		240 Gbps		9 Gbps		24 Gbps	
2 MB Per System		2 MB Per System		2 MB Per System		2 MB Per System		12 MB		12 MB	
•		•		•		•		9K		9K	
802.1d, .1w, .1s		802.1d, .1w, .1s		802.1d, .1w, .1s		802.1d, .1w, .1s		802.1d, .1w, .1s		802.1d, .1w, .1s	
								RPS / EPS		When powered by PoE+	
256		256		256		256		1,024 / 1,024		1,024 / 1,024	
•		•		•		•		•		•	
•		•		•		•		•		•	
•		•		•		•		•		•	
•		•		•		•		•		•	
•		•		•		•		•		•	
•		•		•		•		•		•	
•		•		•		•		•		•	
•		•		•		•		•		•	
•		•		•		•		•		•	
44.12 Watts		1484.12 Watts		77 Watts		Support		486.64 Watts		18.80 Watts	
R		R		R		R		R		D	
M		M		M		M		M		M	
147,965 hours		216,809 hours		256,119 Hours		211,197 Hours		163,019 Hours		214,142 Hours	
36.8 dBA		40 dBA		34.8 dBA		49.7 dBA		38.9 dBA		0 dBA	
•		•		•		•		•		•	
440 x 257 x 43 mm (17.32 x 10.13 x 1.7 in)		440 x 257 x 43 mm (17.32 x 10.13 x 1.7 in)		440 x 257 x 43 mm (17.32 x 10.13 x 1.7 in)		440 x 257 x 43 mm (17.32 x 10.13 x 1.7 in)		440 x 310 x 43.2 mm (17.32 x 12.20 x 1.7 in)		328 x 169 x 43.2 mm (12.91 x 6.65 x 1.7 in)	
3.77 kg (8.3 lb)		3.55 kg (7.8 lb)		4.5 kg (10 lb)		4.04 kg (8.9 lb)		4.96 kg (10.9 lb)		1.33 kg (2.9 lb)	
A		A		A		A		A		A	
Lifetime		Lifetime		Lifetime		Lifetime		Lifetime		Lifetime	
Lifetime		Lifetime		Lifetime		Lifetime		Lifetime		Lifetime	
AGM731F/AGM732F; AXM761/AXM762/AXM763 /AXC761/AXC763		AGM731F/AGM732F; AXM761/AXM762/AXM763 /AXC761/AXC763; RPS4000 (RPS only)		AGM731F/AGM732F; AXM761/AXM762/AXM763/AXC761/AXC763		AGM731F/AGM732F; AXM761/AXM762/AXM763 /AXC761/AXC763		AFM735/ AGM731F/AGM732F, RPS5412 (RPS x1 switch) RPS4000 (RPS/EPs x4 switches)		AFM735/ AGM731F/AGM732F	
PMB0332		PMB0332		PMB0334		PMB0332		PMB0332		PMB0332	

*Including Lifetime Next Business Day Hardware Replacement (For a list of countries where service is available, and terms and conditions visit <http://nbd.netgear.com>).

** Including ProSUPPORT Lifetime 24x7 Advanced Technical Support via chat.

*** 90-day ProSUPPORT 24x7 Advanced Technical Support via phone can be extended by purchasing one, three, or five year On Call contracts.

ProSAFE Switch

NETGEAR®
ProSAFE®

**Fully Managed, M4100 series
(L2+ with static routing), Gigabit**

MODEL		M4100-D12G-POE+ (GSM5212P)	GREEN	M4100-12GF (GSM7212F)	GREEN	M4100-26G (GSM7224)	GREEN	M4100-50G (GSM7248)	GREEN	
Port Configuration	10/100 RJ45 Ports (Auto Uplink)									
	10/100/1000 RJ45 Ports (Auto Uplink)	12		12		26		50		
	Fiber Ports	4 SFP		12 SFP		4 SFP		4 SFP		
	10Gig Module Bays									
PoE	Power Over Ethernet 802.3af Ports	10		4						
	PoE Plus (30W) 802.3at Ports	12 (2 PD + 10 PSE)		4						
	Total PoE Budget	125W standard / 22W passthrough		150W standard						
Stacking	Number of Dedicated Stacking Ports									
	Stacking Bandwidth									
	Stacking (maximum capacity)									
	Stacking Compatibility									
Scalability	# MAC Addresses	16,000		16,000		16,000		16,000		
	ARP Table – Size of	512		512		512		512		
	# Routing Entries	64		64		64		64		
	# ACL Rules	512		512		512		512		
System Management	Single IP Management									
	Web Managed/GUI	•		•		•		•		
	Command Line Interface/RS232 Console/Telnet	•		•		•		•		
	SNMP Version	v1, v2c, v3		v1, v2c, v3		v1, v2c, v3		v1, v2c, v3		
	RMON Group	1, 2, 3, 9		1, 2, 3, 9		1, 2, 3, 9		1, 2, 3, 9		
	DHCP (Client/Server)	Client/Server		Client/Server		Client/Server		Client/Server		
	Port Mirroring	Many-to-One		Many-to-One		Many-to-One		Many-to-One		
	IPv6 full set	•		•		•		•		
	Quality of Service	Number of Priority Queues	8		8		8		8	
		Traffic Prioritization	802.1p ; Diffserv ; TCP/UDP		802.1p ; Diffserv ; TCP/UDP		802.1p ; Diffserv ; TCP/UDP		802.1p ; Diffserv ; TCP/UDP	
Auto Voice VLAN		•		•		•		•		
Multicast Filtering	IGMP Snooping Version	v1, v2, v3		v1, v2, v3		v1, v2, v3		v1, v2, v3		
	IGMP Snooping Querier	•		•		•		•		
Performance	Bandwidth	24 Gbps		24 Gbps		52 Gbps		100 Gbps		
	Buffer Memory	12 MB		12 MB		12 MB		12 MB		
	Jumbo Frames	9K		9K		9K		9K		
Availability	Spanning Tree 802.1d/RSTP .1w/MSTP .1s	802.1d, .1w, .1s		802.1d, .1w, .1s		802.1d, .1w, .1s		802.1d, .1w, .1s		
	RPS Redundant Power Supply	When powered by PoE+		RPS		RPS		RPS		
	Modular Power Supply									
Traffic Management	Number of 802.1q VLAN/Number of VLAN Group	1,024 / 1,024		1,024 / 1,024		1,024 / 1,024		1,024 / 1,024		
	Link Agregation 802.3ad/LACP	•		•		•		•		
	Discovery Protocol LLDP 802.1ab	•		•		•		•		
	Rate Limiting	•		•		•		•		
	Broadcast Storm Control	•		•		•		•		
L3 Routing	IPv4 Static Routing	•		•		•		•		
	IPv4 RIPv1/2, OSPFv1/2, VRRP, EMCP									
	IPv6 Static Routing, IPv6 OSPFv3									
	IPv4 / IPv6 Multicast Routing PIM-SM/DM									
Security	IEEE 802.1x (RADIUS)	•		•		•		•		
	ACL – Access Control Lists	MAC, IP, TCP		MAC, IP, TCP		MAC, IP, TCP		MAC, IP, TCP		
	SSL/SSH & HTTPS	SSL/SSH & HTTPS		SSL/SSH & HTTPS		SSL/SSH & HTTPS		SSL/SSH & HTTPS		
	Guest VLAN	•		•		•		•		
	DHCP Snooping/IP Source Guard/ARP Guard	•		•		•		•		
	TACACS+	•		•		•		•		
Energy Efficiency	EEE 802.3az									
	Auto Port Power Down	•		•		•		•		
	Dynamic Power Consumption	•		•		•		•		
	Power Consumption	166,6 Watts		160,6 Watts		31,6 Watts		49,5 Watts		
Physical	Desktop/Rackmount/Click	D		R		R		R		
	Metal/Plastic Enclosure	M		M		M		M		
	MTBF	766,618 hours		670,956 hours		702,785 hours		489,311 hours		
	Acoustic Noise at 25°C	19.8 dB		30 dB		35.6 dB		37.2 dB		
	Fan	•		•		•		•		
	Width x Depth x Height	331 x 208 x 43.2 mm (13.03 x 8.19 x 1.7 in)		440 x 257 x 43.2 mm (17.3 x 10.12 x 1.7 in)		440 x 257 x 43.2 mm (17.3 x 10.12 x 1.7 in)		440 x 257 x 43.2 mm (17.3 x 10.12 x 1.7 in)		
	Weight	2.596 kg (5.73 lb)		3.665 kg (8.08 lb)		3.24 kg (7.1 lb)		3.63 kg (8.0 lb)		
Electromagnetic Compliance	Class (A or B)	A		A		A		A		
Warranty Hardware*		Lifetime		Lifetime		Lifetime		Lifetime		
Warranty Power Supply		Lifetime		Lifetime		Lifetime		Lifetime		
Modules		AFM735/ AGM731F/AGM732F		AFM735/ AGM731F/AGM732F, RPS5412 (RPS x1 switch) RPS4000 (RPS x4 switches)		AFM735/ AGM731F/AGM732F, RPS5412 (RPS x1 switch) RPS4000 (RPS x4 switches)		AFM735/ AGM731F/AGM732F, RPS5412 (RPS x1 switch) RPS4000 (RPS x4 switches)		
ProSUPPORT Maintenance PKGS***	On Call 3-year 24 x 7	PMB0332		PMB0332		PMB0332		PMB0332		





					Fully Managed, M5300 series (L2+ with static routing and L3 license upgrades, or L3 versions), Gigabit				
M4100-12G-POE+ (GSM7212P)	GREEN	M4100-26G-POE (GSM7226LP)	GREEN	M4100-24G-POE+ (GSM7224P)	GREEN	M4100-50G-POE+ (GSM7248P)	GREEN	M5300-28G (GSM7228S)	
12		26		24		50		24 / 2 10GBase-T	
4 SFP		4 SFP		4 SFP		4 SFP		4 SFP / 2 SFP+ (10G)	
								2 I/O 10G bays	
12		24		24		48			
12				24		48			
380W standard		192W standard / up to 380W with EPS		380W standard / up to 720W with EPS		380W standard / up to 1,440W with EPS			
								2 or 4	
								48Gbps AX742 I/O bays	
								8 switches, 384 ports	
								M5300, GSM72xxPS, GSM73xxSv2	
16,000		16,000		16,000		16,000		32,000	
512		512		512		512		6,144	
64		64		64		64		12,256	
512		512		512		512		16,384 (ingress, egress)	
•		•		•		•		•	
•		•		•		•		•	
v1, v2c, v3		v1, v2c, v3		v1, v2c, v3		v1, v2c, v3		v1, v2c, v3	
1, 2, 3, 9		1, 2, 3, 9		1, 2, 3, 9		1, 2, 3, 9		1, 2, 3, 9	
Client/Server		Client/Server		Client/Server		Client/Server		Client/Server	
Many-to-One		Many-to-One		Many-to-One		Many-to-One		Many-to-One; RSPAN	
•		•		•		•		•	
8		8		8		8		8	
802.1p ; Diffserv ; TCP/UDP		802.1p ; Diffserv ; TCP/UDP		802.1p ; Diffserv ; TCP/UDP		802.1p ; Diffserv ; TCP/UDP		802.1p ; Diffserv ; TCP/UDP	
•		•		•		•		•	
v1, v2, v3		v1, v2, v3		v1, v2, v3		v1, v2, v3		v1, v2, v3	
•		•		•		•		•	
24 Gbps		52 Gbps		48 Gbps		100 Gbps		144 Gbps	
12 MB		12 MB		12 MB		12 MB		16 MB	
9K		9K		9K		9K		12K	
802.1d, .1w, .1s		802.1d, .1w, .1s		802.1d, .1w, .1s		802.1d, .1w, .1s		802.1d, .1w, .1s; PV(R)STP	
RPS		RPS / EPS		RPS / EPS		RPS / EPS		RPS	
								APS135W	
1,024 / 1,024		1,024 / 1,024		1,024 / 1,024		1,024 / 1,024		4,093 / 4,093	
•		•		•		•		•	
•		•		•		•		•	
•		•		•		•		•	
•		•		•		•		•	
•		•		•		•		•	
								with GSM7228L license	
								with GSM7228L license	
								with GSM7228L license	
•		•		•		•		•	
MAC, IP, TCP		MAC, IP, TCP		MAC, IP, TCP		MAC, IP, TCP		MAC, IP, TCP	
SSL/SSH & HTTPS		SSL/SSH & HTTPS		SSL/SSH & HTTPS		SSL/SSH & HTTPS		SSL/SSH & HTTPS	
•		•		•		•		•	
•		•		•		•		•	
•		•		•		•		•	
•		•		•		•		•	
452 Watts		272.90 Watts		533 Watts		555.5 Watts		55 Watts	
R		R		R		R		R	
M		M		M		M		M	
422,436 hours		437,199 hours		394,619 hours		239,298 hours		560,449 hours	
35.8 dBA		36.6 dBA		33.8 dBA		47.7 dBA		37.3 dBA	
•		•		•		•		•	
440 x 257 x 43.2 mm (17.3 x 10.12 x 1.7 in)		440 x 257 x 43.2 mm (17.3 x 10.12 x 1.7 in)		440 x 257 x 43.2 mm (17.3 x 10.12 x 1.7 in)		440 x 310 x 43.2 mm (17.32 x 12.20 x 1.7 in)		440 x 391 x 43.2 mm (17.32 x 15.39 x 1.7 in)	
4.021 kg (8.86 lb)		3.79 kg (8.36 lb)		4.368 kg (9.63 lb)		4.96 kg (10.9lb)		6.3 kg (13.89 lb)	
A		A		A		A		A	
Lifetime		Lifetime		Lifetime		Lifetime		Lifetime	
Lifetime		Lifetime		Lifetime		Lifetime		Lifetime	
AFM735/ AGM731F/AGM732F, RPS5412 (RPS x1 switch) RPS4000 (RPS x4 switches)		AFM735/ AGM731F/AGM732F, RPS5412 (RPS x1 switch) RPS4000 (RPS/EPS x4 switches)		AFM735/ AGM731F/AGM732F, RPS5412 (RPS x1 switch) RPS4000 (RPS/EPS x4 switches)		AFM735/ AGM731F/AGM732F, RPS5412 (RPS x1 switch) RPS4000 (RPS/EPS x4 switches)		AFM735, AGM731F/AGM732F, AX742, AX743/AX744/AX745, AXM761/AXM762/ AXM763, RPS5412 (RPS x1 switch) RPS4000 (RPS x4 switches)	
PMB0332		PMB0332		PMB0332		PMB0332		PMB0333	

*Including Lifetime Next Business Day Hardware Replacement (For a list of countries where service is available, and terms and conditions visit <http://nbd.netgear.com>).

** Including ProSUPPORT Lifetime 24x7 Advanced Technical Support via chat.

*** 90-day ProSUPPORT 24x7 Advanced Technical Support via phone can be extended by purchasing one, three, or five year On Call contracts.

ProSAFE Switch

NETGEAR®
ProSAFE®

**Fully Managed, M5300 series
(L2+ with static routing and L3 license upgrades, or L3 versions),
Gigabit**

MODEL		M5300-52G (GSM7252S)	M5300-28G-POE+ (GSM7228PS)	M5300-52G-POE+ (GSM7252PS)
Port Configuration	10/100 RJ45 Ports (Auto Uplink)			
	10/100/1000 RJ45 Ports (Auto Uplink)	48 / 2 10GBase-T	24 / 2 10GBase-T	48 / 2 10GBase-T
	Fiber Ports	4 SFP / 2 SFP+ (10G)	4 SFP / 2 SFP+ (10G)	4 SFP / 2 SFP+ (10G)
	10Gig Module Bays	2 I/O 10G bays	2 I/O 10G bays	2 I/O 10G bays
PoE	Power Over Ethernet 802.3af Ports	24	24	48
	PoE Plus (30W) 802.3at Ports		24	48
	Total PoE Budget		380W standard / up to 720W with EPS	380W standard / up to 1,440W with EPS
Stacking	Number of Dedicated Stacking Ports	2 or 4	2 or 4	2 or 4
	Stacking Bandwidth	48Gbps AX742 I/O bays	48Gbps AX742 I/O bays	48Gbps AX742 I/O bays
	Stacking (maximum capacity)	8 switches, 384 ports	8 switches, 384 ports	8 switches, 384 ports
	Stacking Compatibility	M5300, GSM72xxPS, GSM73xxSv2	M5300, GSM72xxPS, GSM73xxSv2	M5300, GSM72xxPS, GSM73xxSv2
Scalability	# MAC Addresses	32,000	32,000	32,000
	ARP Table – Size of	6,144	6,144	6,144
	# Routing Entries	12,256	12,256	12,256
	# ACL Rules	16,384 (ingress, egress)	16,384 (ingress, egress)	16,384 (ingress, egress)
System Management	Single IP Management	•	•	•
	Web Managed/GUI	•	•	•
	Command Line Interface/RS232 Console/Telnet	•	•	•
	SNMP Version	v1, v2c, v3	v1, v2c, v3	v1, v2c, v3
	RMON Group	1, 2, 3, 9	1, 2, 3, 9	1, 2, 3, 9
	DHCP (Client/Server)	Client/Server	Client/Server	Client/Server
	Port Mirroring	Many-to-One; RSPAN	Many-to-One; RSPAN	Many-to-One; RSPAN
	IPv6 full set	•	•	•
	Number of Priority Queues	8	8	8
	Traffic Prioritization	802.1p; Diffserv; TCP/UDP	802.1p; Diffserv; TCP/UDP	802.1p; Diffserv; TCP/UDP
Multicast Filtering	Auto Voice VLAN	•	•	•
	IGMP Snooping Version	v1, v2, v3	v1, v2, v3	v1, v2, v3
Performance	IGMP Snooping Querier	•	•	•
	Bandwidth	192 Gbps	144 Gbps	192 Gbps
	Buffer Memory	32 MB	16 MB	32 MB
Availability	Jumbo Frames	12K	12K	12K
	Spanning Tree 802.1d/RSTP .1w/MSTP .1s	802.1d, .1w, .1s; PV(R)STP	802.1d, .1w, .1s; PV(R)STP	802.1d, .1w, .1s; PV(R)STP
	RPS Redundant Power Supply	RPS	RPS / EPS	RPS / EPS
	Modular Power Supply	APS135W	APS525W	APS525W
Traffic Management	Number of 802.1q VLAN/Number of VLAN Group	4,093 / 4,093	4,093 / 4,093	4,093 / 4,093
	Link Agregation 802.3ad/LACP	•	•	•
	Discovery Protocol LLDP 802.1ab	•	•	•
	Rate Limiting	•	•	•
	Broadcast Storm Control	•	•	•
L3 Routing	IPv4 Static Routing	•	•	•
	IPv4 RIPv1/2, OSPFv1/2, VRRP, EMCP	with GSM7252L license	with GSM7228PL license	with GSM7252PL license
	IPv6 Static Routing, IPv6 OSPFv3	with GSM7252L license	with GSM7228PL license	with GSM7252PL license
	IPv4 / IPv6 Multicast Routing PIM-SM/DM	with GSM7252L license	with GSM7228PL license	with GSM7252PL license
Security	IEEE 802.1x (RADIUS)	•	•	•
	ACL - Access Control Lists	MAC, IP, TCP	MAC, IP, TCP	MAC, IP, TCP
	SSL/SSH & HTTPS	SSL/SSH & HTTPS	SSL/SSH & HTTPS	SSL/SSH & HTTPS
	Guest VLAN	•	•	•
	DHCP Snooping/IP Source Guard/ARP Guard	•	•	•
	TACACS+	•	•	•
Energy Efficiency	EEE 802.3az	•	•	•
	Auto Port Power Down	•	•	•
	Dynamic Power Consumption	•	•	•
	Power Consumption	79 Watts	535 Watts	556 Watts
Physical	Desktop/Rackmount/Click	R	R	R
	Metal/Plastic Enclosure	M	M	M
	MTBF	421,113 hours	285,927 hours	194,138 hours
	Acoustic Noise at 25°C	34.9 dBA	44.8 dBA	43.2 dBA
	Fan	•	•	•
	Width x Depth x Height	440 x 391 x 43.2 mm (17.32 x 15.39 x 1.7 in)	440 x 391 x 43.2 mm (17.32 x 15.39 x 1.7 in)	440 x 391 x 43.2 mm (17.32 x 15.39 x 1.7 in)
	Weight	6.8 kg (14.99 lb)	6.95 kg (15.32 lb)	7.56 kg (16.67 lb)
Electromagnetic Compliance	Class (A or B)	A	A	A
Warranty Hardware*	Lifetime	Lifetime	Lifetime	
Warranty Power Supply	Lifetime	Lifetime	Lifetime	
Modules		AFM735; AGM731F/AGM732F AX742; AX743/AX744/AX745; AXM761/AXM762/AXM763; RPS5412 (RPS x1 switch); RPS4000 (RPS/EPS x4 switches)	AFM735; AGM731F/AGM732F AX742; AX743/AX744/AX745; AXM761/AXM762/AXM763; RPS5412 (RPS x1 switch); RPS4000 (RPS/EPS x4 switches)	AFM735; AGM731F/AGM732F AX742, AX743/AX744/AX745; AXM761/AXM762/AXM763; RPS5412 (RPS x1 switch); RPS4000 (RPS/EPS x4 switches)
ProSUPPORT Maintenance PKGS***	On Call 24 x 7/XPRESSHW	PMB0334	PMB0333	PMB0334

Chassis Switch Serie M6100 di NETGEAR

Progettata per essere la soluzione centrale per la rete di aziende di medie dimensioni o come soluzione di accesso nelle reti di grandi dimensioni, la Serie ProSAFE M6100 offre prestazioni elevate e un'elevata densità di porte in alternativa alle soluzioni stackable. Inoltre, grazie alla densità di porte Gigabit e 10G in un formato 4U, la serie M6100 garantisce fabric distribuita, backplane passivo e ridondanza come standard.

NETGEAR Serie M6100 Funzionalità chiave:

- Livello avanzato di accesso per le reti LAN di campus o soluzione ideale di distribuzione o a livello core per le medie imprese
- Funzionalità Layer 2, Layer 3 e Layer 4 avanzate - no licenze aggiuntive - incluso PBR, BGP, DCBX, PFC, ETS e FCoE FIP
- 1.4 Tbps di capacità di switching, backplane passivo, fabric distribuita e ridondanza
- Fino a 144 porte Gigabit, o 72 porte 10 Gigabit, oppure una combinazione di entrambe per un modello ad alta densità
- POE+ (30 watts per porta) e UPOE (60 watts per porta) per un implementazione modulare
- Bassa latenza e scalabile con 32K MAC, 8K ARP/NDP, 4K VLANs, 12K routes

NETGEAR Serie M6100 garanzia e supporto:

- Garanzia ProSafe sull'hardware a vita
- Supporto tecnico online a vita
- Sostituzione NBD dell'hardware a vita



M6100-35

MODEL	Form Factor	Front		Size	
		I/O Slots	PSU Bay	Height	Depth
M6100-35 (XCM8903)	Chassis	3 Open line-card slots	4 Power supply slots (N+1)	4U height 7 in (17.78 cm)	17.39 in (44.16 cm)

MODEL	Form Factor	Line-Cards			
		10/100/1000 BASE-T RJ45 ports	100/1000X Fiber SFP ports	100/1000/10 GBASE-T RJ45 ports	1000/10 GBase-X Fiber SFP+ports
XCM8948	I/O Blade	48	-	-	-
XCM8944	I/O Blade	40	-	2	2 (independent)
XCM8944F	I/O Blade	-	40	2	2 (independent)
XCM8924X	I/O Blade	-	-	24	16 (shared with 10 GBASE-T)

MODEL	Form Factor	Accessories	
		Notes	
XCM89P	Daughter Card		Add POE+ 802.3at functionality to XCM8948 and XCM8944 blades
XCM89UP	Daughter Card		Add UPOE functionality to XCM8944 and XCM8948 blades
APS1000W	Power Supply		PSU 1,000W AC
AFT603	Fan Tray		Fan Tray for M6100-3S chassis (front-to-back cooling principle)
RPS4000v2	External PSU Bay		Additional 1U power shelf (RPS/EPS unit with four open power supply slots)

Moduli e Accessori per gli Switch

Compatibili con gli Switch Managed ProSAFE

Gigabit Fiber Modules Unmanaged/Smart/L2 and L3 Managed



MODEL	AGM731F	AGM732F	AGM734	AFM735
Product Description	SFP Transceiver 1000BASE-SX	SFP Transceiver 1000BASE-LX	SFP Transceiver 1000BASE-T	SFP Transceiver 100BASE-FX
Distance	Up to 550m	Up to 10km	Up to 100m	Up to 2km
Cabling Type	IEEE 802.3z 1000BASE-SX	IEEE 802.3z 1000BASE-LX	1000BASE-T	IEEE 802.3-2002 100BASE-FX
Connector	LC duplex	LC duplex	RJ45	LC duplex
Interface (Bus) Type	Small Form Factor Pluggable (SFP)	Small Form Factor Pluggable (SFP)	Small Form Factor Pluggable (SFP)	Small Form Factor Pluggable (SFP)
Form Factor	Plug-in module	Plug-in module	Plug-in module	Plug-in module
Data Transfer Rate	1 Gbps	1 Gbps	1 Gbps	100 Mbps
Hot-Swappable	•	•	•	•
Fiber Cable Support	50µm OM4 multimode (1000m); 50µm OM3 multimode (550m); 62.5µm OM1/OM2 multimode (275m)	9µm single mode (10km)	Copper CAT5E or better (1000Mbps Full Duplex only)	50µm/62.5µm OM1/OM2/OM3/OM4 multimode (2km)
Switch Compatibility	Smart, Plus and Managed Switches	Smart, Plus and Managed Switches	M5300-28GF3, M6100-44GF3, M7100	Managed Switches
Warranty	5 Year	5 Year	5 Year	5 Year

10Gigabit Copper and Fiber Modules Layer 2 And Layer 3 Managed Gsm72xxps/Gsm73xxs



MODEL	AX742	AX743	AX745	AXM761	AXM762
Product Description	24 / 48 Gigabit Stacking Kit	I/O Module SFP+	I/O Module 10GBase-T	SFP+ Transceiver 10GBASE-SR	SFP+ Transceiver 10GBASE-LR
Distance	N/A	N/A	Up to 100m	Up to 500m	Up to 10km
Cabling Type	CX4 Cable	Fiber or DAC	CAT5/5E: GIGABIT CAT6: 10GBASE-T 30m CAT6A/7: 10GBASE-T 100m	10GBASE-SR "Short Reach"	10GBASE-LR "Long Reach"
Connector	CX4	SFP+	One RJ45 connection	LC duplex	LC duplex
Interface (Bus) Type	24/48 Gigabit High-speed Stacking	10 Gigabit Small Form Factor Pluggable (SFP+)	10 Gigabit 10GBASE-T	10 Gigabit Small Form Factor Pluggable (SFP+)	10 Gigabit Small Form Factor Pluggable (SFP+)
Form Factor	Plug-in module	I/O Module	I/O Module	Plug-in SFP+	Plug-in SFP+
Data Transfer Rate	12 Gbps Full-duplex (24 Gbps)	10 Gbps	10 Gbps	10 Gbps	10 Gbps
Hot-Swappable	•	•	•	•	•
Fiber Cable Support	NA	Depends on SFP+ optics	NA	50µm OM4 multimode (500m); 50µm OM3 multimode (300m); 62.5µm OM1/OM2 multimode (33m)	9µm single mode (10km)
Switch Compatibility	M5300 series (rear bays)	M5300 series (rear bays)	M5300 series (rear bays)	XS7xxx, S3300, M5300, M6100, M7100, M7300	XS7xxx, S3300, M5300, M6100, M7100, M7300
Warranty	5 Year	5 Year	5 Year	5 Year	5 Year

Moduli e Accessori per gli Switch

NETGEAR®
ProSAFE®

Compatibili con gli Switch ProSAFE Managed

10Gigabit Copper and Fiber Modules Layer 2 and Layer 3 Managed GSM72xxPS/ GSM73xxS



MODEL	AXM763	AXM764	AXC761	AXC763
Product Description	SFP+ Transceiver 10GBASE-LRM	SFP+ Transceiver 10GBASE-LR Lite	SFP+ DAC Cable 1m	SFP+ DAC Cable 3m
Distance	Up to 260m	Up to 2km	1m	3m
Cabling Type	10GBASE-LRM Long Reach Multimode	10GBASE-LR "Lite"	Direct Attach 10GSFP+Cu	Direct Attach 10GSFP+Cu
Connector	LC duplex	LC duplex	SFP+	SFP+
Interface (Bus) Type	10 Gigabit Small Form Factor Pluggable (SFP+)	10 Gigabit Small Form Factor Pluggable (SFP+)	10 Gigabit Small Form Factor Pluggable (SFP+)	10 Gigabit Small Form Factor Pluggable (SFP+)
Form Factor	Plug-in SFP+	Plug-in SFP+	SFP+ Cable	SFP+ Cable
Data Transfer Rate	10 Gbps	10 Gbps	10 Gbps	10 Gbps
Hot-Swappable	•	•	•	•
Fiber Cable Support	62.5µm OM1/OM2 multimode (220m); 50µm OM3/OM4 multimode (260m)	9µm single mode (2km)	NA	NA
Switch Compatibility	XS7xxx, S3300, M5300, M6100, M7100, M7300	XS7xxx, S3300, M5300, M6100, M7100, M7300	XS7xxx, S3300, M5300, M6100, M7100, M7300	XS7xxx, S3300, M5300, M6100, M7100, M7300
Warranty	5 Year	5 Year	5 Year	5 Year

Modular Power Supply Layer 2 and Layer 3 Managed Switches



MODEL	APS525W	APS135W	RPS4000v2	APS1000W
Product Description	ProSAFE Auxiliary Power Supply	ProSAFE Auxiliary Power Supply	Redundant / External Power Supply (RPS/EPS for up to 4 switches)	Power Module for RPS4000 and M6100
Hot-Swappable	When used with an RPS	When used with an RPS	Yes	Yes
Switch Compatibility	M5300 series (PoE versions)	M5300 series (non-PoE versions)	S3300 (PoE), M4100, M5300, M6100	RPS4000, RPS4000v2, M6100
Warranty	5 Year	5 Year	5 Year	5 Year

Modular Power Supply Layer 2 and Layer 3 Managed Switches



MODEL	RPS5412	AFT200	APS300W
Product Description	External Redundant Power Supply	ProSAFE Auxiliary Fan Tray	ProSAFE Auxiliary Power Supply
Hot-Swappable	Yes	Yes	Yes
Switch Compatibility	M4100 series, M5300 series	M7100 series, M7300 series	M7100 series, M7300 series
Warranty	5 Year	5 Year	5 Year

ProSAFE Business Wireless

NETGEAR offre una gamma completa di Access Point per le piccole e medie imprese, l'Home office, gli istituti scolastici e gli ospedali. Gli Access Point ProSAFE offrono elevata copertura, affidabilità e scalabilità a un prezzo conveniente. Per la gestione centralizzata di molteplici Access Point, la soluzione ideale è un sistema di gestione wireless che faccia capo a un unico wireless controller per semplificare e rendere più intuitiva la gestione della rete.

Il portfolio di soluzioni wireless Netgear garantiscono i più alti livelli di sicurezza di rete, offrendo una semplicità di configurazione senza eguali.

ProSAFE Wireless Management



	PROSAFE Wireless Management System	PROSAFE Wireless CONTROLLER	ProSAFE Wireless Management System
MODEL	WC7600	WC7520	WMS5316
Product Description	ProSafe WC7600 Wireless Controller	ProSafe 20-AP Wireless Controller	ProSafe 16-AP Wireless Management System
Typical Deployment	Medium enterprise with high throughput and high density Wi-Fi, K-12, hotels/motels, small hospitals	Medium enterprise with advanced Wi-Fi, K-12, small hotels/motels, small hospitals	Small and medium enterprise with basic Wi-Fi, dental office, clinics
HARDWARE			
# of Ethernet Ports	3	4	4
Speed of Ethernet Ports	1 x 10/10/100/1000 Mbps	10/100/1000 Mbps	10/100/1000 Mbps
Physical Size	440 x 430 x 43 mm	261 x 430 x 440 mm	330 x 430 x 209 mm
SUPPORTED AP			
WNDAP660	•		
WNDAP620	•		
WNDAP360	•	•	•
WNDAP350	•	•	•
WNAP320	•	•	•
WNAP210	•	•	•
WG103	•	•	
CAPACITY			
# of managed AP	150	150	16
Stacking	•	•	
# of units per stack	3	3	
MANAGEMENT			
HTTP	•	•	•
SNMP	•	•	•
Telnet	•	•	•
SSH	•	•	•
FEATURES			
Central configuration	•	•	•
Multiple SSIDs, VLANs	•	•	•
Automatic RF Management	Dynamic	Dynamic	Scheduled
Predeployment RF Planning	•	•	
Postdeployment RF calibration with Heatmap	•	•	
Self healing wireless network	•	•	
Dynamic load balancing	•	•	
L2 and L3 fast roaming	•	•	
Built-in AAA server, LDAP support	•	•	
Captivel portal with guest management	•	•	
ORDERING			
Warranty	Lifetime	Lifetime	Lifetime
Product Ordering SKU	WC7600-10000S WC7600-100PRS	WC7520-100NAS WC7520-100AUS WC7520-100PES WC7520-100UKS	WMS5316-100NAS WMS5316-100AUS WMS5316-100PES WMS5316-100UKS
10 AP License Ordering SKU	WC10APL-1000S	WC7510L-1000S	

Access Point ProSAFE

NETGEAR®
ProSAFE®

Access Point Wireless

Gli Access Point di NETGEAR permettono una facile estensione della connessione internet nelle aree non raggiunte dalla rete cablata esistente, offrendo un modo semplice per connettersi anche da dispositivi Mobile.



MODEL	WN604	WAC120	NEW WN203	WN370	WNAP210
Product Description	Wireless-N 150 Access Point	Dual Band 802.11ac Access Point	ProSAFE Wireless-N standalone Access Point	ProSAFE Wireless-N Wall Mount Access Point	ProSAFE Wireless-N Access Point
Typical Deployment	Better-small and home office	High performance small and home office	Small office/home office, small motels, dental offices/clinics	Hotels, motels, school dormitories	Entry level-small to medium enterprise
WIRELESS					
Standard	802.11 b/g/n	802.11 ac	802.11b/g/n	802.11 b/g/n	802.11 b/g/n
Single Band	•		•	•	•
Dual Band		• (Concurrent)			
2.4 GHz	•	•	•	•	•
5 GHz		•			
TX by Rv	1 x 1	2 x 2 (2.4 GHz)	2 x 2	2 x 2	2 x 2
Throughput per Radio	150 Mbps	1.3 Gbps (total)	300 Mbps	300 Mbps	300 Mbps
Max # of Concurrent Clients (standalone)	30	128	30	N/A	64
Max # of Concurrent Clients (managed)			30	64	30
HARDWARE					
# of Ethernet Ports	4	1	1	4 (LAN) + 1 (uplink) 2 (voice)	1
Speed of Ethernet Ports	10/100 Mbps	10/100/1000 Mbps	10/100/1000 Mbps	4 x 10/100 Mbps + 1 (1G) 2 (voice)	10/100/1000 Mbps
PoE			•	•	•
Antenna Type	Detachable	Internal	Internal	Internal	Internal
Antenna Gain	5 dBi	2 dBi	3 dBi	5 dBi	5 dBi
Additional External Antenna Connectors			two 2.4 GHz reverse SMA		
Plenum				•	
Physical Size	175 x 118 x 28 mm	180 x 170 x 60mm	224 x 153 x 28 mm	135 x 93 x 26 mm	224 x 153 x 28 mm
Enclosure Material	Plastic	Plastic	Plastic	Plastic	Plastic
Kensington Lock			•		•
Ceiling/Wall Mounting				wall (junction box)	
Power Consumptions	5 Watts	8.1 Watts	5.8 Watts	5.1 Watts	5.8 Watts
MANAGEMENT					
Deployment Options	Standalone only	Standalone	Standalone	Controller	Standalone & controller
Web UI	•	•	•	•	•
CLI		•	•	•	•
Manageable by WMS5316					•
Manageable by WC7520					
Manageable by WC7600				•	•
SSH			•	•	•
SNMP			•	•	•
FEATURES					
# of BSSIDs	1	1	8	8	8
WEP	•	•	•	•	•
WPA-PSK/TKIP	•	•	•	•	•
WPA2-PSK/AES	•	•	•	•	•
802.1X			•	•	•
Rogue AP Detection			•	•	•
WIDS/WIPS					
Wireless Distribution Systems (WDS)	•	•	•	•	
Repeater	•	•	•		•
Point-to-Point/Multi-Point	•	•	•		•
Simultaneous Bridge /Client Association	•	•	•		•
Captive Portal			•	•	•
VLANs			•	•	•
MAC ACL	•	•	•	•	•
802.11e/WMM	•	•	•	•	•
Rate Limiting	•	•	•	•	•
Bandwidth Management					
Beamforming					
Bandsteering					
ORDERING					
Warranty	3 years	3 years	Lifetime	Lifetime	Lifetime
Product Ordering SKU	WN604-100NAS WN604-100AUS WN604-100PES WN604-100UKS	WAC120-100NAS WAC120-100AUS WAC120-100PES WAC120-100UKS WAC120-100PRS	WN203-100NAS WN203-100AUS WN203-200PES WN203-100PRS WN203-100UKS	WN370-10000S	WNAP210-100NAS WNAP210-100AUS WNAP210-100PES WNAP210-100PRS WNAP210-100UKS

Antenne ProSAFE

NETGEAR®
ProSAFE®

Antenne ProSAFE

Le Antenne ProSafe possono essere utilizzate con gli Access Point per incrementare il segnale wireless.



MODEL	ANT2407	ANT224D10
Product Description	ProSAFE 7 dBi Omni-directional Antenna	ProSAFE 10 dBi Directional Antenna
Frequency	IEEE 802.11 b/g, 2.4 GHz	IEEE 802.11 n, 2.4 GHz Range: Up to 8,5km
Customer Needs	Indoor (Place close to the Access Point and antenna usage range (line of sight))	Indoor / Outdoor
Polarization	Vertical	Linear Vertical
Gain	7 dBi	10 dBi
Angle	Horizontal 360° / Vertical 600°	Horizontal 33° / Vertical 32°
Access Points	WG302, WAG102, WG102, WG103, WGL102, WAGL102	WNAP320, WNDAP350, WNDAP360
Antenna Cable (Accessories)		1.5 m ACC-10314-01 5 m ACC-10314-03 10 m ACC-10314-04
Connections	Reverse SMA female	Reverse N/SMA Adapters
Assembly	Includes mounting brackets	Wall mount and pole mounting options
Mass	(H x D x W) 110 x 65 x 300 mm Integrated cable length: 1,5m	(H x D x W) 262 x 240 x 30 mm
Warranty	2 Year	2 Year

* Range estimation is based on two wireless nodes each with an ANT24D18 antenna attached, a NETGEAR 3 m low-loss antenna cable, 10 dBi link budget margin, associating with each other at 11 Mbps under ideal line-of-sight conditions.

** Range estimation is based on two wireless nodes, each with an ANT24O5 antenna attached, a NETGEAR 1.5 m low-loss antenna cable, associating with each other at 11 Mbps under ideal line-of-sight conditions.

SICUREZZA DI RETE COMPLETA

La maggior parte dei prodotti di sicurezza di rete per piccole e medie imprese, incide sulla copertura e la velocità della rete. I prodotti NETGEAR ProSecure e ProSafe, invece, garantiscono la migliore soluzione di sicurezza, senza compromessi.

NETGEAR®
ProSAFE®

Firewall ProSAFE VPN – Valore per le piccole e medie imprese



I ProSAFE Firewall VPN Router garantiscono connessioni remote protette, bloccando gli attacchi e gli accessi non autorizzati alla rete aziendale. I ProSAFE Firewall VPN Router di sicurezza offrono la condivisione degli accessi alla rete aziendale tra la sede principale e quelle remote, mentre i ProSAFE Firewall VPN wireless Router sono la soluzione ideale per garantire l'accesso protetto alle risorse aziendali da qualsiasi dispositivo mobile. Tutti i modelli hanno funzionalità di sicurezza di livello enterprise integrati.

Client Software VPN



MODEL	VPN CLIENT PROFESSIONAL SOFTWARE VPNG01L/VPNG05L
Product Description	ProSAFE VPN Client Professional Software, available in Single and Five User License
Features	Robust encryption and authentication NAT traversal support GUI for configuring security policies and managing certificates Redundant gateway capability Extensive interoperability with IPSec-compliant devices Preset configuration files available for NETGEAR® VPN/Firewall routers
Netgear®- Compatible Devices	Compatible with multiple Microsoft Windows platforms including Windows 7
VPNc Certified	Basic Interop
Snmp Device Compatible	N/A
Warranty	90-Day Media warranty

ProSAFE VPN Firewall

NETGEAR®
ProSAFE®

Soluzioni di Sicurezza affidabili e semplici da utilizzare

I Firewall ProSAFE VPN (Virtual Private Network) di NETGEAR garantiscono la massima sicurezza, grazie a un elevato livello di encryption



MODEL	FVS336G	FVS318N
Product Description	ProSAFE® Dual WAN Gigabit Firewall with SSL & IPsec VPN	ProSAFE® 802.11n Wireless SSL & IPsec VPN Gigabit Firewall
CONNECTIVITY		
Gigabit Ports WAN/LAN	1/8	1/8
DMZ Interfaces (Configurable)	1	1
Wireless		a/b/g/n
IPv6 Support	Yes	Yes
PERFORMANCE		
LAN-to-WAN Throughput	250 Mbps	250 Mbps
IPsec VPN (3DES) Throughput	30 Mbps	5 Mbps
SSL VPN Throughput ¹		30 Mbps
Maximum Concurrent Connections	6,000	6,000
Maximum Number of VLANs	254	254
AUTHENTICATION SUPPORT		
VoIP SIP ALG Compatibility List	Linksys SPA-901, Linksys SPA-941, SNOM M3, Cisco 7940G, X-Lite 3.0 (software for phones), D-Link DPH-140S, Grandstream GXP-2000, Polycom SoundStation 6000, Siemens C450, Aastra 51i	Linksys SPA-901, Linksys SPA-941, SNOM M3, Cisco 7940G, X-Lite 3.0 (software for phones), D-Link DPH-140S, Grandstream GXP-2000, Polycom SoundStation 6000, Siemens C450, Aastra 51i
VPN Pass Through	IPsec, PPTP, L2TP	IPsec, PPTP, L2TP
NETWORKING		
WAN Modes	NAT, Classical Routing	NAT, Classical Routing
ISP Address Assignment	DHCP, Static IP Assignment, PPPoE, PPTP	DHCP, Static IP Assignment, PPPoE, PPTP
Routing	Static, Dynamic, RIPv1, RIPv2	Static, Dynamic, RIPv1, RIPv2
DHCP	DHCP Server, DHCP Relay	DHCP Server, DHCP Relay
DDNS	DynDNS.org, TZO.com, Oray.net, 3322.org	DynDNS.org, TZO.com, Oray.net, 3322.org
VLANs		802.1Q
WAN Fail-over		
WAN Load Balancing Modes		
VPN		
IPsec Encryption/Authentication	56-bit DES, 168-bit 3DES, AES(128, 192, 256 bit)/SHA-1, MD5	56-bit DES, 168-bit 3DES, AES(128, 192, 256 bit)/SHA-1, MD5
IPsec NAT Traversal (VPN Passthrough)	•	•
IPsec Access Modes	56-bit DES, 168-bit 3DES, AES(128, 192, 256 bit)/SHA-1, MD5	56-bit DES, 168-bit 3DES, AES(128, 192, 256 bit)/SHA-1, MD5
SSL Encryption Support		DES, 3DES, ARC4, AES(ECB, CBC, XCBC, CNTR)128, 256 bit
SSL VPN Platforms Supported		Windows 2000/XP/Vista (32bit), MAC OS X 10.4+
HARDWARE		
Processor Speed	250 MHz	300 MHz
Dimensions/Weight	(W x D x H) 19 x 3.5 x 12.5 cm Weight: 0.59 kg	(W x D x H) 19 x 3.5 x 12.5 cm Weight: 0.59 kg
Package Contents	Ethernet Cable, Power Adapter, Install Guide, Resource CD, Warranty Card	Ethernet Cable, Power Adapter, Install Guide, Resource CD, Warranty Card
ORDERING		
Hardware Warranty	Lifetime	Lifetime
Next Business Day Replacement	Lifetime	Lifetime
Technical Support	Lifetime	Lifetime
Product Ordering SKU	FVS318G-200NAS FVS318G-200EUS FVS318G-200AUS	FVS318N-100NAS FVS318N-100EUS FVS318N-100AUS
ACCESSORIES		
ProSafe VPN Client Software	VPNG01L (1-User), VPNG05L (5-User)	VPNG01L (1-User), VPNG05L (5-User)



FVS336G	SRX5308
ProSAFE® Dual WAN Gigabit Firewall with SSL & IPsec VPN	ProSAFE® Quad WAN Gigabit Firewall with SSL & IPsec VPN
2/4	4/4
1	1
Yes	Yes
350 Mbps	924 Mbps
78 Mbps	180 Mbps
14 Mbps	21 Mbps
10,000	200,000
254	254
Linksys SPA-901, Linksys SPA-941, SNOM M3, Cisco 7940G, X-Lite 3.0 (software for phones), D-Link DPH-140S, Grandstream GXP-2000, Polycom SoundStation 6000, Siemens C450, Aastra 51i	Linksys SPA-901, Linksys SPA-941, SNOM M3, Cisco 7940G, X-Lite 3.0 (software for phones), D-Link DPH-140S, Grandstream GXP-2000, Polycom SoundStation 6000, Siemens C450, Aastra 51i
IPsec, PPTP, L2TP	IPsec, PPTP, L2TP
NAT, Classical Routing	NAT, Classical Routing
DHCP, Static IP Assignment, PPPoE, PPTP	DHCP, Static IP Assignment, PPPoE, PPTP
Static, Dynamic, RIPv1, RIPv2	Static, Dynamic, RIPv1, RIPv2
DHCP Server, DHCP Relay	DHCP Server, DHCP Relay
DynDNS.org, TZO.com, Oray.net, 3322.org	DynDNS.org, TZO.com, Oray.net, 3322.org
802.1Q	802.1Q
•	•
Weighted Load Balancing, Round Robin	Weighted Load Balancing, Round Robin
56-bit DES, 168-bit 3DES, AES(128, 192, 256 bit)/SHA-1, MD5	56-bit DES, 168-bit 3DES, AES(128, 192, 256 bit)/SHA-1, MD5
•	•
DES, 3DES, ARC4, AES(ECB, CBC, XCBC, CNTR)128, 256 bit	DES, 3DES, ARC4, AES(ECB, CBC, XCBC, CNTR)128, 256 bit
Windows 2000/XP/Vista (32bit), MAC OS X 10.4+	Windows 2000/XP/Vista (32bit), MAC OS X 10.4+
300 MHz	300 MHz
(W x D x H) 19 x 3.5 x 12.5 cm Weight: 0.59 kg	(W x D x H) 19 x 3.5 x 12.5 cm Weight: 0.59 kg
Ethernet Cable, Power Adapter, Install Guide, Resource CD, Warranty Card	Ethernet Cable, Power Adapter, Install Guide, Resource CD, Warranty Card
Lifetime	Lifetime
Lifetime	Lifetime
Lifetime	Lifetime
FVS336G-300NAS FVS336G-300EUS FVS336G-300AUS	SRX5308-100NAS SRX5308-100EUS SRX5308-100AUS
VPNG01L (1-User), VPNG05L (5-User)	VPNG01L (1-User), VPNG05L (5-User)



Sistemi di storage ReadyNAS & ReadyDATA di NETGEAR

ReadyNAS: Ogni dispositivo di network-attached storage (NAS) di NETGEAR è basato sull'innovativo sistema operativo ReadyNAS, che rappresenta la soluzione ideale per le piccole e medie imprese. ReadyNAS, che rivoluziona il backup dati offrendo espansione automatica XRAID2, Continuous Data Protection e snapshot illimitati, Real-time anti-virus e native encryption. I ReadyNAS sono i primi Storage del mercato a integrare funzionalità avanzate a un prezzo così conveniente. I ReadyNAS utilizzano la piattaforma ReadyCLOUD per gestire la ricerca cloud-based e il provisioning.

ReadyDATA: Gli Storage ReadyDATA offrono una serie di funzionalità avanzate come replica block-level, deduplication e thin provisioning, che li rendono ideali per aziende che richiedono elevate prestazioni di backup, disaster recovery o che necessitano di supportare infrastrutture virtuali. Con una capacità espandibile fino a 360TB unita alla massima scalabilità e flessibilità di configurazione supportano l'utilizzo di HDD SSD, SAS e SATA all'interno dello stesso volume. ReadyDATA ridefinisce il concetto di storage per le PMI e le filiali delle grandi aziende, offrendo una tecnologia di classe enterprise a prezzi convenienti. ReadyDATA integrates a full suite of granular monitoring, reporting and chargeback utilities for organizations or resellers looking to offer a managed service model.



Tabella comparativa dei ReadyNAS

NETGEAR®
ReadyNAS®

Soluzioni di Storage Home e Business



	READYNAS 102	READYNAS 104	READYNAS 202	READYNAS 204
Product Description	2-Bay Desktop	2-Bay Desktop	2-Bay Desktop	4-Bay Desktop
Total Solution Capacity	12 TB	24 TB	12 TB	24 TB
File Protocols	NFS, CIFS/SMB, AFP, HTTP(S), FTP(S), WebDAV	NFS, CIFS/SMB, AFP, HTTP(S), FTP(S), WebDAV	NFS, CIFS/SMB, AFP, HTTP(S), FTP(S), WebDAV	NFS, CIFS/SMB, AFP, HTTP(S), FTP(S), WebDAV
Block Protocols	iSCSI	iSCSI	iSCSI	iSCSI
File System	BTRFS	BTRFS	BTRFS	Desktop SATA
Populated Drives	Desktop SATA	Desktop SATA	Desktop SATA	Desktop/Enterprise SATA
Gigabit Ethernet Ports	1	2	2	2
10G Ethernet Port	0	0	0	0
Supports EDA500 Expansion Chassis	No	No	No	No
Reliability Features	Hot Swappable Disks	Hot Swappable Disks Network Failover	Hot Swappable Disks Network Failover	Hot Swappable Disks Network Failover
CPU	Marvell Armada 370 1.2GHz	Marvell Armada 370 1.2GHz	Marvell Annapurna AL212 Dual Core 1.4GHz High Performance ARM Cortex A15	Marvell Annapurna AL212 Dual Core 1.4GHz High Performance ARM Cortex A15
Memory	512 MB	512 MB	2 GB	2 GB
RAID Level Supported	RAID 0,1	RAID 0,1	RAID 0,1	RAID 0,1,5,6,10
Auto Volume Expansion	X-RAID2	X-RAID2	X-RAID2	X-RAID2
Unique Features	<p>Most versatile and secure remote access:</p> <ul style="list-style-type: none"> - ReadyCLOUD Collaboration, Sync & Backup - ReadyCLOUD automated VPN <p>5 Levels of data protection:</p> <ul style="list-style-type: none"> - XRAID - Hourly protection of data with performance-neutral snapshots - Real-Time Antivirus - Protection against silent data corruption ("Bitrot") - Integrated, web-managed replication for disaster recovery or ReadyNAS Vault / backup to the cloud 	<p>Most versatile and secure remote access:</p> <ul style="list-style-type: none"> - ReadyCLOUD Collaboration, Sync & Backup - ReadyCLOUD automated VPN <p>5 Levels of data protection:</p> <ul style="list-style-type: none"> - XRAID - Hourly protection of data with performance-neutral snapshots - Real-Time Antivirus - Protection against silent data corruption ("Bitrot") - Integrated, web-managed replication for disaster recovery or ReadyNAS Vault / backup to the cloud 	<p>Most versatile and secure remote access:</p> <ul style="list-style-type: none"> - ReadyCLOUD Collaboration, Sync & Backup - ReadyCLOUD automated VPN <p>5 Levels of data protection:</p> <ul style="list-style-type: none"> - XRAID - Hourly protection of data with performance-neutral snapshots - Real-Time Antivirus - Protection against silent data corruption ("Bitrot") - Integrated, web-managed replication for disaster recovery or ReadyNAS Vault / backup to the cloud 	<p>Most versatile and secure remote access:</p> <ul style="list-style-type: none"> - ReadyCLOUD Collaboration, Sync & Backup - ReadyCLOUD automated VPN <p>5 Levels of data protection:</p> <ul style="list-style-type: none"> - XRAID - Hourly protection of data with performance-neutral snapshots - Real-Time Antivirus - Protection against silent data corruption ("Bitrot") - Integrated, web-managed replication for disaster recovery or ReadyNAS Vault / backup to the cloud
Onboard Backup Options	ReadyCLOUD user directory backup Remote & Local Time Machine	ReadyCLOUD user directory backup Remote & Local Time Machine	ReadyCLOUD user directory backup Remote & Local Time Machine	ReadyCLOUD user directory backup Remote & Local Time Machine
Vmware Ready	Yes	Yes	Yes	Yes
ReadyNAS Replicate (License Option)	Embedded, no additional license needed	Embedded, no additional license needed	Embedded, no additional license needed	Embedded, no additional license needed
Warranty (System)	3 year standard warranty	3 year standard warranty	3 year standard warranty	3 year standard warranty
ProSUPPORT Service Options	Oncall 24x7: PMB0311, PMB0331, PMB0351	Oncall 24x7: PMB0311, PMB0331, PMB0351 XPressHW: PRR0331, PRR0351	Oncall 24x7: PMB0311, PMB0331, PMB0351 XPressHW: PRR0331, PRR0351	Oncall 24x7: PMB0311, PMB0331, PMB0351
System SKUs	RN10200 RN10211D RN10212D RN10221D RN10222D RN10223D	RN10400 RN10421D RN10441D RN10442D	RN20200 RN20221D RN20222D	RN20400 RN20441D RN20442D



READYNAS 312	READYNAS 314	READYNAS 316	READYNAS 516	READYNAS 716
2-Bay Desktop	4-Bay Desktop	6-Bay Desktop	6-Bay Desktop	6-Bay Desktop
12 (32) TB	12 TB	36 (76) TB	36 (96) TB	36 (96) TB
NFS, CIFS/SMB, AFP, HTTP(S), FTP(S), WebDAV	NFS, CIFS/SMB, AFP, HTTP(S), FTP(S), WebDAV	NFS, CIFS/SMB, AFP, HTTP(S), FTP(S), WebDAV	NFS, CIFS/SMB, AFP, HTTP(S), FTP(S), WebDAV	NFS, CIFS/SMB, AFP, HTTP(S), FTP(S), WebDAV
iSCSI	iSCSI	iSCSI	iSCSI	iSCSI
BTRFS	BTRFS	BTRFS	BTRFS	BTRFS
Desktop/Enterprise SATA	Desktop/Enterprise SATA	Desktop/Enterprise SATA	Enterprise SATA	Enterprise SATA
2	2	2	2	2
0	0	0	0	2 (10GBaseT)
Yes	Yes	Yes	Yes	Yes
Hot Swappable Disks Network Failover	Hot Swappable Disks Network Failover	Hot Swappable Disks Network Failover	Hot Swappable Disks Network Failover ECC Memory	Hot Swappable Disks Network Failover ECC Memory
Intel Atom 2.1GHz Dual Core	Intel Atom 2.1GHz Dual Core	Intel Atom 2.1GHz Dual Core	Intel Core i3-3220 3.3GHz Dual Core	Intel Xeon E3-1265Lv2 2.5GHz (3.5GHz turbo) Quad Core
2 GB	2 GB	2 GB		16GB ECC
RAID 0,1	RAID 0,1,5,6,10	RAID 0,1,5,6,10	RAID 0,1,5,6,10	RAID 0,1,5,6,10
X-RAID2	X-RAID2	X-RAID2	X-RAID2	X-RAID2
Most versatile and secure remote access: - ReadyCLOUD Collaboration, Sync & Backup - ReadyCLOUD automated VPN 5 Levels of data protection: - XRAID - Hourly protection of data with performance-neutral snapshots - Real-Time Antivirus - Protection against silent data corruption ("Bitrot") - Integrated, web-managed replication for disaster recovery or ReadyNAS Vault / backup to the cloud	Most versatile and secure remote access: - ReadyCLOUD Collaboration, Sync & Backup - ReadyCLOUD automated VPN 5 Levels of data protection: - XRAID - Hourly protection of data with performance-neutral snapshots - Real-Time Antivirus - Protection against silent data corruption ("Bitrot") - Integrated, web-managed replication for disaster recovery or ReadyNAS Vault / backup to the cloud	Most versatile and secure remote access: - ReadyCLOUD Collaboration, Sync & Backup - ReadyCLOUD automated VPN 5 Levels of data protection: - XRAID - Hourly protection of data with performance-neutral snapshots - Real-Time Antivirus - Protection against silent data corruption ("Bitrot") - Integrated, web-managed replication for disaster recovery or ReadyNAS Vault / backup to the cloud	Most versatile and secure remote access: - ReadyCLOUD Collaboration, Sync & Backup - ReadyCLOUD automated VPN 5 Levels of data protection: - XRAID - Hourly protection of data with performance-neutral snapshots - Real-Time Antivirus - Protection against silent data corruption ("Bitrot") - Integrated, web-managed replication for disaster recovery or ReadyNAS Vault / backup to the cloud	Most versatile and secure remote access: - ReadyCLOUD Collaboration, Sync & Backup - ReadyCLOUD automated VPN 5 Levels of data protection: - XRAID - Hourly protection of data with performance-neutral snapshots - Real-Time Antivirus - Protection against silent data corruption ("Bitrot") - Integrated, web-managed replication for disaster recovery or ReadyNAS Vault / backup to the cloud
ReadyCLOUD user directory backup Remote & Local Time Machine	ReadyCLOUD user directory backup Remote & Local Time Machine	ReadyCLOUD user directory backup Remote & Local Time Machine	ReadyCLOUD user directory backup Remote & Local Time Machine	ReadyCLOUD user directory backup Remote & Local Time Machine
Yes	Yes	Yes	Yes	Yes
Embedded, no additional license needed	Embedded, no additional license needed	Embedded, no additional license needed	Embedded, no additional license needed	Embedded, no additional license needed
5 year standard warranty	5 year standard warranty	5 year standard warranty	5 year standard warranty	5 year standard warranty
Oncall 24x7: PMB0312, PMB0332, PMB0352	Oncall 24x7: PMB0312, PMB0332, PMB0352	Oncall 24x7: PMB0312, PMB0332, PMB0352	Oncall 24x7: PMB0313, PMB0333, PMB0353	Oncall 24x7: PMB0313, PMB0333, PMB0353
RN31200 RN31211D RN31212D RN31221D RN31222D	RN31400 RN31421D RN31441D RN31442D RN31441E RN31442E RN31443E	RN31600 RN31661D RN31662D RN31664D RN31661E RN31662E RN31663E RN31664E	RN51600 RN51661E RN51662E RN51663E RN51664E	RN716X

Tabella comparativa dei ReadyNAS

Soluzioni di Storage Business

NETGEAR®
ReadyNAS®



	READYNAS 2120	READYNAS 3130
Product Description	1U Rackmount, 4-Bays	1U Rackmount, 4-Bays
Total Solution Capacity	24 TB	24 TB
File Protocols	NFS, CIFS/SMB, AFP, HTTP(S), FTP(S), WebDAV	NFS, CIFS/SMB, AFP, HTTP(S), FTP(S), WebDAV
Block Protocols	iSCSI	iSCSI
File System	BTRFS	BTRFS
Populated Drives	Desktop/Enterprise SATA	Desktop/Enterprise SATA
Gigabit Ethernet Ports	2	4
10G Ethernet Port	0	0
Reliability Features	Hot Swappable Disks Network Failover	Hot Swappable Disks Network Failover
CPU	Marvell Armada XP 1.2GHz Dual Core	Intel Atom Dual Core (C2338) 1.7GHz processor
Memory	2 GB	2 GB ECC
RAID Level Supported	RAID 0,1,5,6,10	RAID 0,1,5,6,10
Auto Volume Expansion	X-RAID2	X-RAID2
Unique Features	<p>Most versatile and secure remote access:</p> <ul style="list-style-type: none"> - ReadyCLOUD Collaboration, Sync & Backup - ReadyCLOUD automated VPN <p>5 Levels of data protection:</p> <ul style="list-style-type: none"> - XRAID - Hourly protection of data with performance-neutral snapshots - Real-Time Antivirus - Protection against silent data corruption ("Bitrot") - Integrated, web-managed replication for disaster recovery or ReadyNAS Vault / backup to the cloud 	<p>Most versatile and secure remote access:</p> <ul style="list-style-type: none"> - ReadyCLOUD Collaboration, Sync & Backup - ReadyCLOUD automated VPN <p>5 Levels of data protection:</p> <ul style="list-style-type: none"> - XRAID - Hourly protection of data with performance-neutral snapshots - Real-Time Antivirus - Protection against silent data corruption ("Bitrot") - Integrated, web-managed replication for disaster recovery or ReadyNAS Vault / backup to the cloud
Onboard Backup Options	ReadyCLOUD user directory backup Remote & Local Time Machine	ReadyCLOUD user directory backup Remote & Local Time Machine
Vmware Ready	Yes	Yes
ReadyNAS Replicate (License Option)	Embedded, no additional license needed	Embedded, no additional license needed
Warranty (System)	5 year standard warranty	5 year standard warranty
ProSUPPORT Service Options	Oncall 24x7: PMB0312, PMB0332, PMB0352	Oncall 24x7: PMB0312, PMB0332, PMB0352
System SKUs	PMB0312 PMB0332 PMB0352	PMB0312 PMB0332 PMB0352



READYNAS 3220

READYNAS 4220S

READYNAS 4220X

2U Rackmount, 12-Bays	2U Rackmount, 12-Bays	2U Rackmount, 12-Bays
72 TB	72 TB	72 TB
NFS, CIFS/SMB, AFP, HTTP(S), FTP(S), WebDAV	NFS, CIFS/SMB, AFP, HTTP(S), FTP(S), WebDAV	NFS, CIFS/SMB, AFP, HTTP(S), FTP(S), WebDAV
iSCSI	iSCSI	iSCSI
BTRFS	BTRFS	BTRFS
Enterprise SATA	Enterprise SATA	Enterprise SATA
4	4	4
0	2 (SFP+)	2 (10GBaseT)
Hot Swappable Disks Network Failover	Hot Swappable Disks Network Failover	Hot Swappable Disks Network Failover
Intel Core i3-3220v2 3.3GHz Dual Core	Intel Xeon E3-1225V2 3.2GHz Quad Core	Intel Xeon E3-1225V2 3.2GHz Quad Core
4GB ECC	8GB ECC	8GB ECC
RAID 0,1,5,6,10	RAID 0,1,5,6,10	RAID 0,1,5,6,10
X-RAID2	X-RAID2	X-RAID2
Most versatile and secure remote access: - ReadyCLOUD Collaboration, Sync & Backup - ReadyCLOUD automated VPN	Most versatile and secure remote access: - ReadyCLOUD Collaboration, Sync & Backup - ReadyCLOUD automated VPN	Most versatile and secure remote access: - ReadyCLOUD Collaboration, Sync & Backup - ReadyCLOUD automated VPN
5 Levels of data protection: - XRAID - Hourly protection of data with performance-neutral snapshots - Real-Time Antivirus - Protection against silent data corruption ("Bitrot") - Integrated, web-managed replication for disaster recovery or ReadyNAS Vault / backup to the cloud	5 Levels of data protection: - XRAID - Hourly protection of data with performance-neutral snapshots - Real-Time Antivirus - Protection against silent data corruption ("Bitrot") - Integrated, web-managed replication for disaster recovery or ReadyNAS Vault / backup to the cloud	5 Levels of data protection: - XRAID - Hourly protection of data with performance-neutral snapshots - Real-Time Antivirus - Protection against silent data corruption ("Bitrot") - Integrated, web-managed replication for disaster recovery or ReadyNAS Vault / backup to the cloud
ReadyCLOUD user directory backup Remote & Local Time Machine	ReadyCLOUD user directory backup Remote & Local Time Machine	ReadyCLOUD user directory backup Remote & Local Time Machine
Yes	Yes	Yes
Embedded, no additional license needed	Embedded, no additional license needed	Embedded, no additional license needed
5 year standard warranty with 3 year NBD HW Replacement	5 year standard warranty with 3 year NBD HW Replacement	5 year standard warranty with 3 year NBD HW Replacement
Oncall 24x7: PMB0314, PMB0334, PMB0355	Oncall 24x7: PMB0314, PMB0334, PMB0355	Oncall 24x7: PMB0314, PMB0334, PMB0355
RN3220 RN32262E RN32263E RN32264E RN322122E RN322123E RN322124E	RN4220S	RN4220X RN422X62E RN422X63E RN422X64E RN422X122 RN422X123 RN422X124

ReadyDATA Soluzioni di Business Storage

Funzionalità di classe enterprise per ogni tipo di esigenza



FAMILY	READYDATA 5200	READYDATA 516
MODELS	RD5200 2U diskless controller, diverse drive packs, EDA2000 2U 12-Bay expansion unit, EDA4000 4U 24-Bay expansion unit	RDD516 Desktop Chassis, SATA and SSD drive packs
Product Description	ReadyDATA is a unified storage (NAS/SAN) platform featuring ZFS-based storage technology designed for businesses of any size. The ReadyDATA 5200 is highly scalable, rackmount unified storage (NAS and SAN) that features enterprise-class technology without the cost and complexity of traditional enterprise offerings.	ReadyDATA is a unified storage (NAS/SAN) platform featuring ZFS-based storage technology designed for businesses of any size. The ReadyDATA 516 liberates enterprise storage features from the datacenter, delivering the most affordable block-based replication solution for centralized backup of branch office environments.
HARDWARE		
Maximum Number of Drive Bays	60	6
Drive Types Supported	3.5" SAS/NL-SAS/SATA/SSD, SSD Caching	3.5" SATA/SSD, SSD Caching
Total Solution Capacity	360 TB	36 TB
Form Factor	Rack mount 2U with optional expansion units (2U and 4U)	Desktop/Pedestal
Expansion Trays	Up to two expansion units with 12 and 24 bays	Not Supported
Dimensions (H x W x D)	89 x 437 x 648 (mm)	259 x 192 x 287.5 (mm)
Redundancy	Hot swappable disks, redundant power supplies redundant fans, ECC Memory	Hot swappable disks, ECC Memory
Accessories	Rack kit, redundant power supplies, and power cables included	Power supply and power cable included
Warranty	5 years with next business day hardware replacement included for the first 3 years	5 years with next business day hardware replacement included for the first 3 years
NETWORK		
Ports	2 x 10/100/1000 Mbps Ethernet Ports with Load Balancing and Failover 2 x 10 GE Ethernet Ports with Load Balancing and Failover (SFP+) 2 USB 2.0 Ports	2 x 10/100/1000 Mbps Ethernet Ports with Load Balancing and Failover 1 x USB 2.0, 2 x USB 3.0
Features	Virtual Network Interfaces (VNICs), DHCP or Static IP Address assignment, LACP Support for Load Balancing and Failover	Virtual Network Interfaces (VNICs), DHCP or Static IP Address assignment, LACP Support for Load Balancing and Failover
Protocol Support	SMB, AFP, NFS, iSCSI, HTTP/S, FTP/S, IPv6, SNMP, SSH, SSL	SMB, AFP, NFS, iSCSI, HTTP/S, FTP/S, IPv6, SNMP, SSH, SSL
DATA PROTECTION		
RAID Levels	0, 1, 5, 6, 10, 50, 60	0, 1, 5, 6, 10, 50, 60
RAID Global Hot Spare	Supported	Supported
Snapshots	Configure unlimited Hourly, Daily, Weekly scheduled block-based snapshots for Continuous Data Protection.	Configure unlimited Hourly, Daily, Weekly scheduled block-based snapshots for Continuous Data Protection.
Replication	Encrypted remote replication can be locally-managed or cloud-managed (ReadyDATA to ReadyDATA).	Encrypted remote replication can be locally-managed or cloud-managed (ReadyDATA to ReadyDATA).
Backup Software Support	Supports Backup applications from Acronis, Quest, StorageCraft, Symantec, VEEAM	Supports Backup applications from Acronis, Quest, StorageCraft, Symantec, VEEAM
VOLUME MANAGEMENT		
Provisioning	Instant Volume Creation & Expansion with Thick and Thin Provisioning	Instant Volume Creation & Expansion with Thick and Thin Provisioning
Capacity Efficiency	Compression and Deduplication	Compression and Deduplication
Performance Boost	SSD caching for performance boost	SSD caching for performance boost
STORAGE AREA NETWORK (SAN)		
iSCSI	Thin provisioning, Unlimited snapshots, SPC-3 Persistent Reservation (iSCSI)	Thin provisioning, Unlimited snapshots, SPC-3 Persistent Reservation (iSCSI)
Operating System Support	VMware vSphere 5, Citrix XenServer 6, Windows Hyper-V Server 2008 & 2012, Windows Server 2008 R2 & 2012, Linux, UNIX, Solaris	VMware vSphere 5, Citrix XenServer 6, Windows Hyper-V Server 2008 & 2012, Windows Server 2008 R2 & 2012, Linux, UNIX, Solaris
AVAILABLE SKUS		
Controller and Expansion Units	RD5200-100WWS - ReadyDATA 5200 Base Unit EDA2000-100WWS - ReadyDATA 2U 12-Bay Expansion EDA4000-100WWS - ReadyDATA 2U 24-Bay Expansion	RDD516-100 - ReadyDATA 516 Desktop Unit
SATA Drive Packs	RD5D1LT01-100WWS - 1 X 1TB SATA HDD Drive Pack RD5D1LT02-100WWS - 1 X 2TB SATA HDD Drive Pack RD5D1LT03-100WWS - 1 X 3TB SATA HDD Drive Pack RD5D1LT04-10000S - 1 X 4TB SATA HDD Drive Pack	RDD1LT02-10000S - 1 x 2TB SATA HDD Drive Pack RDD1LT03-10000S - 1 x 3TB SATA HDD Drive Pack RDD1LT04-10000S - 1 x 4TB SATA HDD Drive Pack
NL-SAS Drive Packs	RD5D1LN01-100WWS - 1 X 1TB NL-SAS HDD Drive Pack RD5D1LN02-100WWS - 1 X 2TB NL-SAS HDD Drive Pack RD5D1LN03-100WWS - 1 X 3TB NL-SAS HDD Drive Pack	Not Supported
SAS Drive Packs	RD5D1LS01-100WWS - 1 X 300GB SAS HDD Drive Pack RD5D1LS02-100WWS - 1 X 450GB SAS HDD Drive Pack RD5D1LS03-100WWS - 1 X 600GB SAS HDD Drive Pack	Not Supported
SSD Drive Packs	RD5D1SC01-100WWS - 1 x 50GB Write Cache SLC Drive Pack RD5D1SM01-100WWS - 1 x 100GB Read Cache MLC Drive Pack RD5D1SM02-100WWS - 1 x 200GB Read Cache MLC Drive Pack	RDD1SM01-10000S - 1 X 100GB Read/Write Cache MLC Drive Pack
PROSUPPORT		
OnCall 24x7 Phone Support	PMB0314 - OnCall 24x7, (1 Year) PMB0334 - OnCall 24x7, (3 Year) PMB0354 - OnCall 24x7, (5 Year)	PMB0313 - OnCall 24x7, (1 Year) PMB0333 - OnCall 24x7, (3 Year) PMB0353 - OnCall 24x7, (5 Year)
Professional Services	PSB 0304 -10000S - Professional Setup and Configuration (Remote) PSP 1104 -10000S - Professional Setup and Configuration (Onsite)	PSB 0304 -10000S - Professional Setup and Configuration (Remote) PSP 1104 -10000S - Professional Setup and Configuration (Onsite)

NETGEAR ReadyRECOVER™

ReadyRECOVER è una soluzione completa per il backup e il disaster recovery ideale per le piccole e medie imprese. Il file system di ultima generazione dei ReadyDATA garantisce l'integrità dei dati, un utilizzo intelligente della capacità di storage e il minimo impatto sulle prestazioni.

Con ReadyRECOVER, le snapshot incrementali, create ogni 15 minuti, generano full backup istantanei. Un qualsiasi punto nel tempo è pronto per ripristinare in modo rapido e sicuro sistemi Windows, come Microsoft SQL, Exchange, e SharePoint per piattaforme fisiche o virtuali. Inoltre, ogni backup è pronto per effettuare il ripristino di file e cartelle.

Le problematiche tipiche delle tradizionali tecniche di Full backup vengono risolte da ReadyRECOVER, che offre un elevato risparmio della capacità di storage e snapshot incrementali insieme ai vantaggi offerti dai full backup.

ReadyRECOVER nasce dall'integrazione di ReadyDATA, la piattaforma di storage unificato di Netgear, con ShadowProtect, il software per il backup e il ripristino dei dati di StorageCraft.



ReadyRECOVER a prima vista

Dimenticati per sempre dei full backup che occupano troppo tempo e spazio

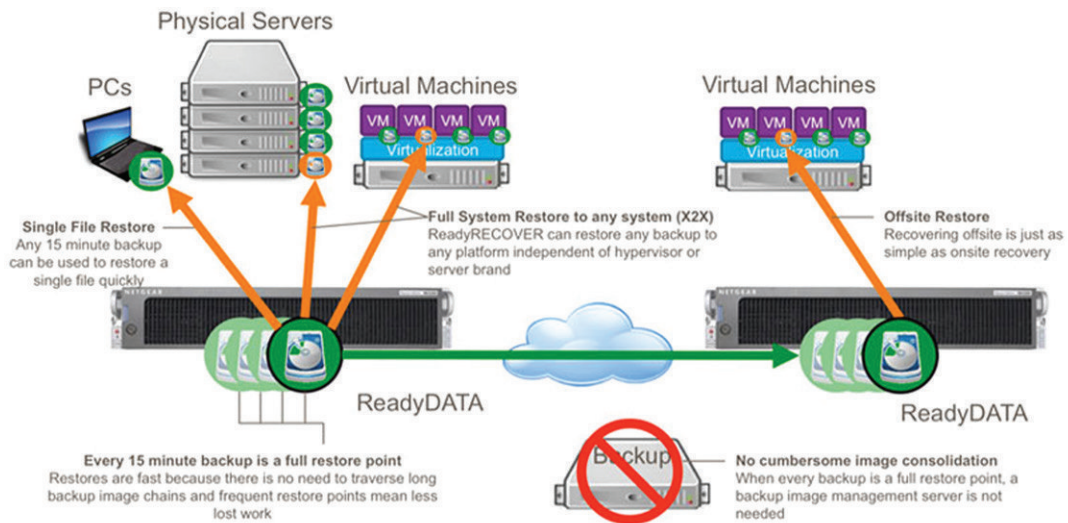
ReadyRECOVER – la migliore soluzione di backup per le piccole e medie imprese.



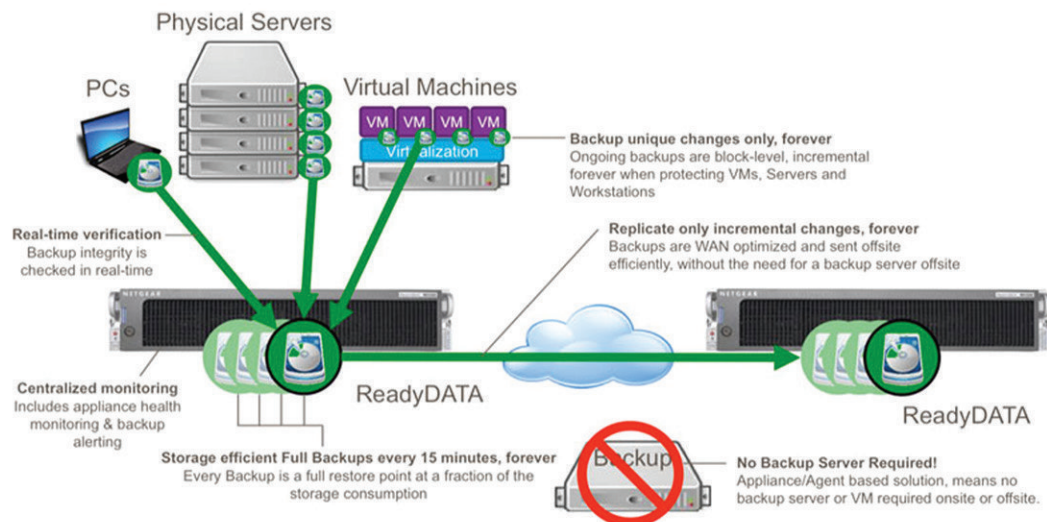
- Backup rapidi e frequenti, utilizzando le snapshot incrementali. Dopo il primo Backup completo, tutti gli altri saranno rapidi senza alcun impatto sulle prestazioni. La maggior parte dei software di backup dovrebbe includere la tecnologia incrementale, ma spesso è necessario effettuare mensilmente o annualmente un backup completo e backup incrementali nel mezzo.
- Verifica della scrittura dei dati in tempo reale, in questo modo è possibile effettuare backup continui tutto il giorno senza necessità di verifica o lavori di manutenzione.
- Monitoraggio del backup e alert per il consumo della capacità di storage e per lo stato di RAID e dei dischi.
- Ottimizzazione della WAN significa che solo i dati modificati vengono riscritti risparmiando così sulla capacità di storage.
- Supporto per server Windows, virtual machine, workstation e laptops e per le principali piattaforme di virtualizzazione, come VMware, Hyper-V e XenServer.

MODEL	ANT224D10
RRSERV01-10000S	StorageCraft ShadowProtect Server Edition
RRVIRT01-10000S	StorageCraft ShadowProtect Virtual Server Edition
RRDESK01-10000S	StorageCraft ShadowProtect Desktop Edition
RRGRE01-10000S	ReadyRECOVER Granular Restore for Exchange
RRSBS01-10000S	ReadyRECOVER Small Business Server Edition
MAINTENANCE (1YEAR INCLUDED)	DESCRIPTION
MRRSERV1-10000S	ReadyRECOVER Server Edition One-year Maintenance Extension
MRRVIRT1-10000S	ReadyRECOVER Virtual Server Edition One-year Maintenance Extension
MRRDESK1-10000S	ReadyRECOVER Desktop Edition One-year Maintenance Extension
MRRSBS1-10000S	ReadyRECOVER SBS Edition One-year Maintenance Extension
MRRGRE1-10000S	ReadyRECOVER Granular Restore for Exchange One-year Maintenance Extension

Schema di backup con ReadyRECOVER



Schema di ripristino con ReadyRECOVER





NETGEAR ProSUPPORT™

Offerta di servizi ProSUPPORT (USA, Canada, Australia & alcuni Paesi europei¹)



NETGEAR è l'unico vendor del settore networking ad offrire supporto tecnico 24x7 a vita* per i prodotti Business.

Abbiamo, inoltre, esteso la sostituzione NBD dell'Hardware per allinearla alle condizioni di garanzia Netgear, senza nessun costo aggiuntivo:

- Garanzia a vita e sostituzione NBD a vita per i prodotti della serie ProSAFE.
- 5 anni di garanzia e 5 anni di sostituzione NBD per i prodotti ReadyNAS* /ReadyDATA

L'estensione della sostituzione NBD rappresenta un upgrade, senza costi aggiuntivi, della garanzia di 3 anni prima offerta da Netgear su tutti i prodotti ProSAFE, ReadyNAS e ReadyDATA per le piccole e medie imprese..



Prodotti ProSAFE switching, wireless e firewall con garanzia a vita, offrono anche la sostituzione NBD a vita e il supporto tecnico via chat a vita.



I prodotti di storage ReadyNAS* e ReadyDATA con garanzia di 5 anni includono anche 5 anni di sostituzione NBD dell'hardware e dei dischi di classe enterprise.

Tabella delle garanzie e dei servizi offerti.

GARANZIA PRODOTTI BUSINESS	GARANZIA HARDWARE			SOSTITUZIONE NBD		SUPPORTO TECNICO (24X7)	
	A vita*	5 anni	3 anni	A vita*	5 anni	Chat a vita	90 giorni telefonico
PROSAFE®							
Switch: dagli Unmanaged ai Full managed	✓			✓		✓	✓
Wireless: Controller e AP	✓			✓		✓	✓
Firewall	✓			✓		✓	✓
READYNAS®/READYDATA®							
ReadyNAS Desktop - RN300/500/700		✓			✓	✓	✓
ReadyNAS Desktop - RN100			✓				✓
ReadyNAS Rackmount		✓			✓	✓	✓
ReadyNAS Dischi: Enterprise Class		✓			✓	✓	✓
ReadyNAS Dischi: Desktop Class			✓				
ReadyDATA		✓			✓	✓	✓
ReadyDATA Dischi		✓			✓	✓	✓

Note:

¹ Austria, Belgio, Danimarca, Francia, Germania, Irlanda, Italia, Lussemburgo, Spagna, Svezia, Svizzera, Paesi Bassi e UK

* Non sono inclusi nella garanzia: accessori, software, licenze. ReadyNAS serie100 dischi Desktop e chassis popolati. questi prodotti hanno, invece, una garanzia di 3 anni, supporto tecnico online a vita e supporto telefonico gratuito per i primi 90 giorni. La sostituzione NBD dell'hardware non è disponibile in tutti i Paesi. Contatta il tuo commerciale Netgear di riferimento per scoprire i servizi attivi nel tuo Paese. Per maggiori informazioni: www.netgear.it

SFRUTTA I SERVIZI OFFERTI DA NETGEAR

NETGEAR è consapevole che la soddisfazione del cliente è direttamente collegata al successo di un'azienda. Per questo motivo, Netgear offre un ampio portfolio di servizi con diversi livelli di supporto, permettendovi di sfruttare la consulenza dei propri esperti per soddisfare qualsiasi esigenza dei vostri clienti. I nostri servizi garantiscono che i prodotti business operino sempre in maniera efficiente e affidabile, aiutando i vostri clienti a focalizzarsi solo sul proprio core business.

SERVIZI PROFESSIONALI D'INSTALLAZIONE

Riduci i tempi e i costi di implementazione grazie ai servizi professionali d'installazione, setup e configurazione per :

- ReadyNAS / ReadyDATA
- ProSAFE Managed e Smart Switch

Il servizio spazia dalla pianificazione alle attività di distribuzione, includendo la configurazione e i test di verifica.

Farsi guidare telefonicamente dagli esperti NETGEAR durante l'installazione permette di velocizzare il processo. I benefici saranno visibili a lungo termine, in quanto avrete eseguito l'installazione seguendo gli standard di settore e i prodotti saranno stati configurati correttamente, in modo da sfruttarne al massimo tutte le funzionalità.

Codice: PSB0304-10000S Installazione, Setup e Configurazione (da Remoto)

ESTENDI E MIGLIORA LE CONDIZIONI DI GARANZIA

NETGEAR ProSUPPORT estende le condizioni di garanzia e supporto tecnico, offrendo così la migliore garanzia sul mercato per i prodotti Business.

Contratto OnCall 24x7

- Supporto telefonico gratuito esteso a 90 giorni
- Numero ProSUPPORT dedicato*
- Manutenzione del Software tramite notifica

Disponibili per 1, 3 e 5 anni per ogni categoria prodotto

Sostituzione NBD dell'Hardware*

NETGEAR offre la sostituzione NBD dell'hardware per i prodotti di classe Business. Ora le aziende possono proteggere la propria rete senza la necessità di assumere uno staff dedicato.

Difetti dei dischi

Quando un disco storage* è difettoso, il servizio di Defective Drive Retention ("DDR") permette ai clienti Business di tenere il disco difettoso per poter mantenere il controllo su dati critici archiviati sul disco.

CATEGORIA PRODOTTO	1	2	3	4
SERVIZIO				
OnCall 24x7 (1 year)	PMB0311	PMB0312	PMB0313	PMB0314
Onsite NBD Hardware Replace (3 years)*	PMP3131-10000S	PMP3132-10000S	PMP3133-10000S	PMP3134-10000S
Drive Retention* (5 years)		PDR0152	PDR0153	PDR0154

* Numero dedicato disponibile per USA, UK, Francia, Germania, Italia. La sostituzione NBD dell'hardware è disponibile per Austria, Belgio, Danimarca, Francia, Germania, Irlanda, Italia, Lussemburgo, Spagna, Svezia, Svizzera, Paesi Bassi & UK. La Defective Drive Retention è disponibile per i dischi SATA & SAS venduti da NETGEAR nei seguenti Paesi: Australia, Austria, Belgio, Canada, Danimarca, Francia, Germania, Irlanda, Italia, Giappone, Lussemburgo, Spagna, Svezia, Svizzera, Paesi Bassi, UK e USA.

NETGEAR ProSUPPORT

ProSUPPORT Service (USA, Canada, Australia & alcuni Paesi europei¹)

Category 1		
Model	ProSUPPORT SKU (Term)	
	OnCall 24x7	Onsite NBD
	PMB0351 (5 Yrs.) PMB0331 (3 Yrs.) PMB0311 (1 Yr.)	PMPX1121 (2 Yrs.)
FS105	o	NA
FS108/P	o	NA
FS116	o	NA
FS116P	o	NA
FS726Tv2	o	NA
FS726T	o	NA
FS726TP	o	NA
FS728TLP	o	NA
FS728TP	o	NA
FS728TS	o	NA
FS750T2	o	NA
FS752TP	o	NA
FS752TS	o	NA
FVG318	o	NA
FVS318N	o	NA
FVS318Gv2	o	NA
FVS318N	o	NA
FVS336G	o	NA
GS105/E/PE	o	NA
GS108E/P/PE	o	NA
GS108T	o	NA
GS110TP	o	NA
GS116	o	NA
GS116E	o	NA
GS116Ev2	o	NA
GS510TP	o	NA
GS516TP	o	NA
GS716T	o	NA
GS724T	o	NA
GS728TP	o	NA
GS728TPP	o	NA
GS728TPSB	o	NA
GS728TSB	o	NA
GS748T	o	NA
JFS516	o	NA
JFS524	o	NA
JFS524E	o	NA
JGS516	o	NA
JGS516PE	o	NA
JGS524	o	NA
JGS524Ev2	o	NA
JGS524PE	o	NA
RN102xx	o	NA
RN104xx	o	NA
RNDU2xxx	o	NA
SRX5308	o	NA

Category 1		
Model	ProSUPPORT SKU (Term)	
	OnCall 24x7	Onsite NBD
	PMB0351 (5 Yrs.) PMB0331 (3 Yrs.) PMB0311 (1 Yr.)	PMPX1121 (2 Yrs.)
SRXN3205	o	NA
WAC120	o	NA
WN203	o	NA
WN370	o	NA
WNAP210	o	NA
WNAP320	o	NA
WND930	o	NA
WNDAP350	o	NA
WNDAP360	o	NA
WNDAP6xx	o	NA
XS708E	o	NA

Category 2		
Model	ProSUPPORT SKU (Term)	
	OnCall 24x7	Onsite NBD
	PMB0352 (5 Yrs.) PMB0332 (3 Yrs.) PMB0312 (1 Yr.)	PMPX1122 (2 Yrs.)
EDA500	o	NA
FSM5210P	o	o
FSM7226P	o	o
FSM7250P	o	o
GS724TP	o	NA
GS724TPS	o	NA
GS728TX	o	NA
GS728TXP	o	NA
GS748TPS	o	NA
GS748TS	o	NA
GS748TS3U	o	NA
GS752TP	o	NA
GS752TPS	o	NA
GS752TPSB	o	NA
GS752TX	o	NA
GS752TXP	o	NA
GS752TXS	o	NA
GS752TXSB	o	NA
GSM5212	o	o
GSM5212P	o	o
GSM7212F	o	o
GSM7212P	o	o
GSM7224P	o	o
GSM7224SK	o	o
GSM7224-200	o	o
GSM7226LP	o	o
GSM7248P	o	o
GSM7248SK	o	o
GSM7248-200	o	o
RN212xxx	o	NA
RN312xx	o	NA
RN314xx	o	NA
RN316xx	o	NA
WC7520	o	o
WMS5316	o	NA
XS712T	o	NA

¹ Austria, Belgio, Danimarca, Francia, Germania, Irlanda, Italia, Lussemburgo, Spagna, Svizzera, Svezia, Paesi Bassi & UK

Fate riferimento al codice ProSUPPORT specifico per ogni prodotto ProSAFE o ReadyNAS.

NETGEAR ProSUPPORT

Category 3		
Model	ProSUPPORT SKU (Term)	
	OnCall 24x7	Onsite NBD
	PMB0353 (5 Yrs.) PMB0333 (3 Yrs.) PMB0313 (1 Yr.)	PMPX1123 (2 Yrs.)
EDA2000	o	o
EDA4000	o	o
GSM7228PS	o	o
GSM7228S	o	o
GSM7252PS	o	o
GSM7252S	o	o
GSM7328FS	o	o
GSM7328S	o	o
RDD516	o	NA
RN516xx	o	NA
RN716x	o	NA
WC7600	o	o

Category 4		
Model	ProSUPPORT SKU (Term)	
	OnCall 24x7	Onsite NBD
	PMB0354 (5 Yrs.) PMB0334 (3 Yrs.) PMB0314 (1 Yr.)	PMPX1124 (2 Yrs.)
GSM7352S	o	o
RD52xxxx	o	o
RN322xxx	o	o
RN422xxxx	o	o
RN12Pxxxx	o	o
RN12Sxxxx	o	o
RN12Txxxx	o	o
XSM7224	o	o
XSM7224S	o	o

NA Not Applicable
o Option for new purchase, extension or renewal

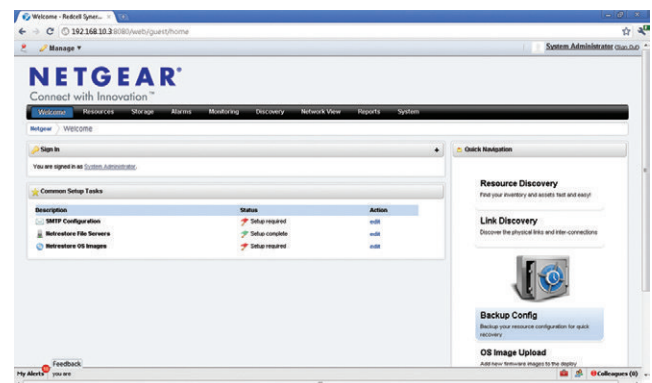
¹ Austria, Belgio, Danimarca, Francia, Germania, Irlanda, Italia, Lussemburgo, Spagna, Svizzera, Svezia, Paesi Bassi & UK

Fate riferimento al codice ProSUPPORT specifico per ogni prodotto ProSAFE o ReadyNAS.

ReadyNAS/ReadyDATA Replicate™

Affida i dati più importanti della tua azienda a un dispositivo ReadyNAS/ReadyDATA. ReadyNAS/ReadyDATA Replicate semplifica la replica dei dati su un altro ReadyNAS/ReadyDATA se i due sistemi sono sulla stessa LAN. Basta impostare il processo di replica ed eseguire la replica iniziale localmente. Quindi spostare il secondo ReadyNAS/ReadyDATA ovunque sia disponibile un accesso a Internet, e la replica continua, senza interruzioni. ReadyNAS/ReadyDATA Replicate è solo uno dei tanti metodi intelligenti che i ReadyNAS/ReadyDATA utilizzano per semplificare le esigenze di storage aziendale.

ProSAFE Software



Modello	Network Management Software — NMS200
Descrizione prodotto	ProSAFE Network Management Software
Funzionalità	Powerful, scalable and simple to use Single console for extensive visibility, granular control, and seamless automation Configuration and Firmware/OS management
NETGEAR-Dispositivi compatibili	XCM8800 Series Chassis Switches, ProSAFE Managed Switches, ProSAFE Smart Switches, ProSAFE Wireless Controllers, ProSAFE Wireless Access Points, ReadyNAS Storage Devices
Garanzia	90-Day Media warranty



NETGEAR®

NETGEAR International Inc.

T 02 91198001

F 02 91198024

Piazza della Repubblica, 32

20124 Milano - Italia

Per maggiori informazioni www.netgear.it

Seguici su www.linkedin.com/company/netgear-italia



This catalog is printed on 30% post consumer recycled paper.