

# PTO PRODUCTS



## Driveline Components - Domestic

1000 Series, 1875 Series.....	8
12 Series.....	9-11
14 Series.....	12-14
35 Series.....	15-17
44 Series.....	18-19
55 Series.....	20-21
6 Series.....	5-7
W Series.....	4

## Driveline Components - Metric CV 80°

2280 Series.....	55-56
2380 Series.....	63-64
2480 Series.....	70-71
2580 Series.....	74-75
6 Series.....	40-41
8 Series.....	44-48

## Driveline Components - Metric..... 25

2100 Series.....	49-51
220/720 Series.....	65-66
2200 Series.....	52-53
2300/210 Series.....	60-62
2400 Series.....	67-69
2500 Series.....	72-73
660/I & II Series.....	57-59

## Flexible Coupling Disc..... 84

## Gearboxes

35 HP.....	89-94
45 HP.....	95
55 HP.....	96
75 HP.....	97-104
100 HP.....	105-111
120 HP.....	112

## Half Shafts for John Deere Round Balers... 76

## Over Running Clutches & Couplers..... 85

## Power Take-Off Yokes

Series 1.....	26-27
Series 2.....	28-29
Series 3.....	30-31
Series 4.....	32-33
Series 5.....	34-36
Series 6.....	37-39
Series 7.....	42-43
Series 8.....	44-46

## PTO Adapters..... 85-88

Compact Tractors.....	87
-----------------------	----

## PTO Lock Pins..... 87

## Quick Disconnect Repair Pins..... 2,25

## Repair Tubing and Shafting..... 2

## Slip Clutches to Fit-

Domestic & Metric Drivelines.....	76-83
-----------------------------------	-------

## Slip Clutch Replacement Discs..... 84

## Stub Shaft for Bush Hog..... 84

## U-Joint Repair Kits..... 3

## U-Joint Repair Kits - Metric C.V..... 22

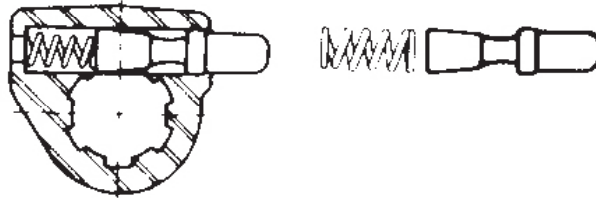
## Yokes, Clutch Hubs & Slip Clutches..... 76

**MODERN**  
AG PRODUCTS, LTD.

**TOLL-FREE 1-888-404-8908 • TOLL-FREE FAX 1-888-404-8910**

**WWW.MODERNAGPARTS.COM**

**QUICK  
DISCONNECT  
REPAIR PINS**



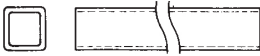
PART NO.	REPAIR KIT FOR	MFG. NO.
340-1901	Agritrans, Weasler & Rockwell 6 Spline	13002006
340-1902	Agritrans & Weasler 21 Spline	13002021
340-1905	Agritrans & Weasler 20 Spline	13002020
340-1908	Neapco 1-3/8, 21 Spline & 6 Spline	56-1857
340-1928	Weasler Safety Slide Lock	13004000



All Tubing Sold And Priced Per Lengths Shown

**ROUND REPAIR TUBING**

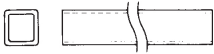
6'	PART NO.	O.D.	GAUGE	WALL THICKNESS	FOR SERIES
	341-7695	2"	14	.083	12 & 14 ..
	341-7775	2-1/8"	11	.120	35 ..
	341-7835	2-1/4"	11	.120	35 ..
	341-7955	2-1/2"	10	.134	44 & 55 ..



All Tubing Sold And Priced Per Lengths Shown

**SQUARE TUBING**

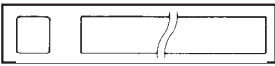
6'	PART NO.	INNER DIMENSION	OUTER DIMENSION
	341-6066	1"	1-1/4"



All Tubing Sold And Priced Per Lengths Shown

**RECTANGULAR TUBING**

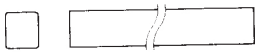
6'	PART NO.	INNER DIMENSION	OUTER DIMENSION
	341-5006	3/4" X 7/8"	1" X 1-1/8"
	341-5016	1" X 1-1/8"	1-1/4" X 1-3/8"



All Tubing And Shafting Sold And Priced Per Lengths SHOWN

**RECTANGULAR SHAFTING**

6'	PART NO.	SIZE
	341-3006	3/4" X 7/8"
	341-3016	1" X 1-1/8"



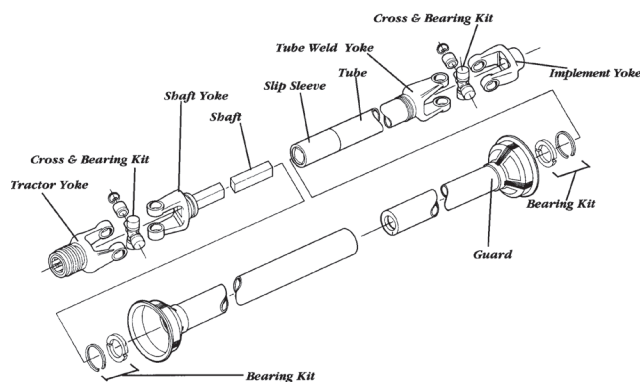
All Shafting Sold And Priced Per Lengths Shown

**SQUARE SHAFTING**

6'	PART NO.	SIZE
	341-2046	1"
	341-2086	1-3/16"
	341-2106	1-5/16"

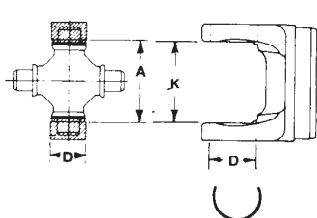
**REPAIR TUBING AND SHAFTING**

## Domestic Driveline Components

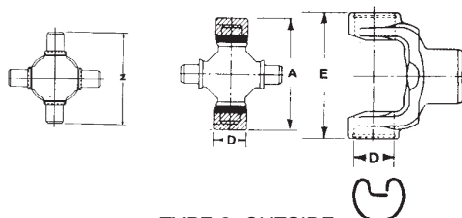


HORSE POWER RATING	
SERIES	H.P. AT 540 RPM
6N	20
12N	30
14N	50
35N	80
44N	100
55N	NA

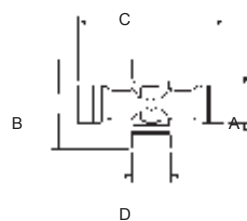
## U-JOINT REPAIR KITS



TYPE 1: INSIDE SNAP RING



TYPE 2: OUTSIDE SNAP RING



80° CV U-JOINT



TYPE F



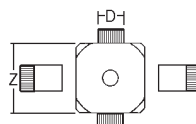
TYPE H



TYPE Y



TYPE Z



PIN & BLOCK

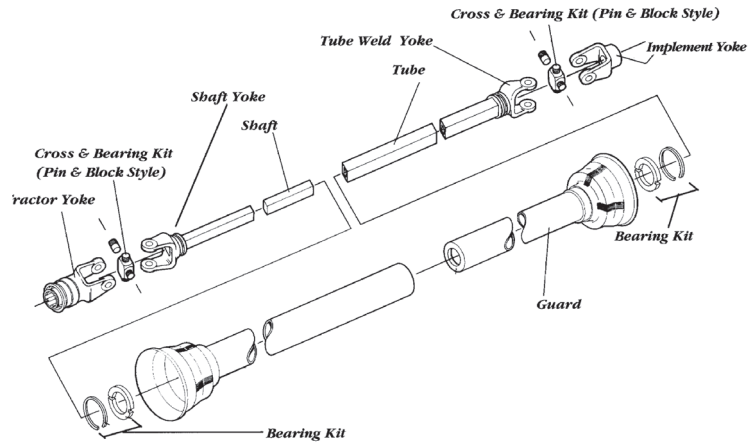
### U-JOINT REPAIR KITS - MADE IN THE U.S.A.

PART NO.	SERIES	MFG. NO.	BEARING DIAMETER "D"	CROSS LENGTH "Z"	SNAP RING TYPE	SNAP RING DIMENSION "A"	YOKE DIMENSION	
							K	E
339-1	1FR	853	7/8"	2-45/64"	2	2-29/32"	---	3-1/8"
339-3	3DR	856	1"	3-11/16"	2	3-15/16"	---	4-3/16"
339-6	6N	1-1475	31/32"	1-31/32"	1	1-7/16"	1-7/16"	---
339-7	W	200-0700	9/16"	1	--	---	---	---
339-12	12N	1-1275	1-1/16"	2-5/16"	1	1-13/16"	1-13/16"	---
339-14	14N	1-2075	1-1/8"	2-13/32"	2	2-5/8"	---	2-7/8"
339-35	35N	2-2275	1-1/4"	2-15/16"	2	3-9/32"	---	3-31/64"
339-44	44N	3-0044	1-5/16"	3-3/4"	1	2-51/64"	2-51/64"	---
339-55	55N	3-0045	1-17/32"	4-1/64"	2	4-5/16"	---	4-5/8"
339-102	1000N	1-0170	15/16"	2-1/16"	1	1-1/2"	1-1/2"	---
339-103	1875	1-1875	1"	2-7/8"	1	---	2-11/32"	3-1/8"
56R201	2600	2600	1-3/8"	---	2	4-3/16"	---	---

### 80° CONSTANT VELOCITY KITS - MADE IN THE U.S.A.

PART NO.	SERIES	MFG. NO.	DIM. "A"	DIM. "B"	DIM. "C"	DIM. "D"	SNAP RING TYPE
M200-3545	35N	200-3545	1 1/4"	3 7/32"	4 5/16"	1 1/4"	2

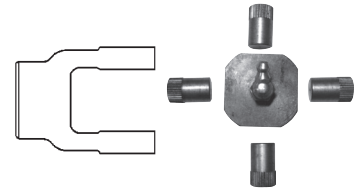
**POWER TAKE OFF YOKES**



**W SERIES DOMESTIC FROM WEASLER**

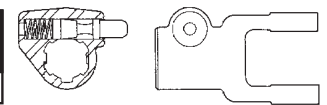
**Cross & Bearing Kit: Pin & Block Style**

PART NO.	WEASLER NO.	PIN DIAMETER	BLOCK DIMENSION
339-7	200-0700	9/16"	1"



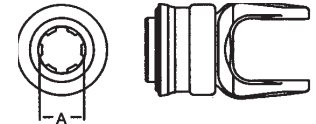
**Tractor Yokes: Quick Disconnect (Pin Type)**

PART NO.	WEASLER NO.	BORE	PIN REPAIR KIT PART NO.
340-706	102-0706	1-3/8 - 6 Spline	340-1908



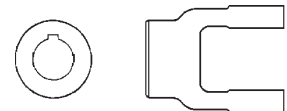
**Tractor Yokes: Quick Disconnect (Collar Type)**

PART NO.	WEASLER NO.	BORE	PIN REPAIR KIT PART NO.
340-710	100-0706	1-3/8 - 6 Spline	13003100



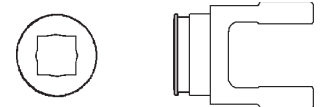
**Implement Yoke (Round)**

PART NO.	WEASLER NO.	BORE	KEYWAY WIDTH LOC.
340-716	800-0716	1"	1/4"
340-718	800-0720	1-1/4"	1/4"



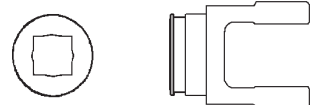
**Shaft Weld Yoke**

PART NO.	WEASLER NO.	BORE
340-751	300-0700	15/16" Square

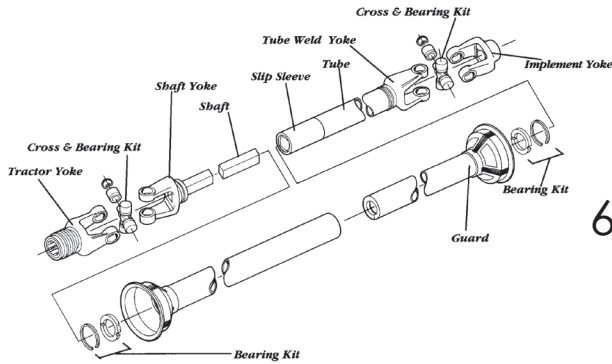


**Tube Weld Yoke**

PART NO.	WEASLER NO.	BORE	FITS TUBE SIZE
340-765	700-0700	15/16" Square	1-1/4"



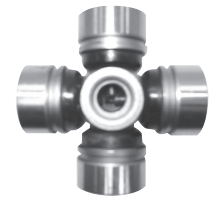
**POWER TAKE OFF YOKES**



**6 SERIES DOMESTIC**

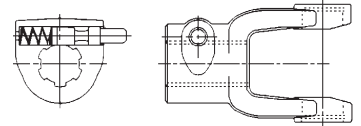
**Cross & Bearing Kit: Inside Lock-Up**

PART NO.	WEASLER NO.	BEARING DIAMETER	LOCK-UP DIMENSION
339-6	200-0600	31/32	1-7/16



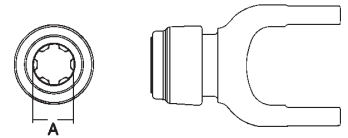
**Tractor Yokes: Quick Disconnect (Pin Type)**

PART NO.	WEASLER NO.	BORE	PIN REPAIR KIT PART NO.
340-603		1-3/8 - 21 Spline	340-1908
340-605	102-0606	1-3/8 - 6 Spline	340-1901



**Tractor Yokes: Quick Disconnect (Collar Type)**

PART NO.	WEASLER NO.	BORE	PIN REPAIR KIT PART NO.
340-606	100-0606	1-3/8 - 6 Spline	13003100



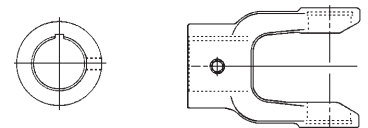
**Male Spline for Lawn & Garden**

PART NO.	WEASLER NO.	BORE	LOCK-UP DIMENSION
340-609	106-0615	1 - 15 Spline	



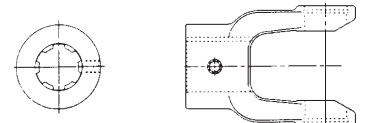
**Implement Yoke (Round)**

PART NO.	WEASLER NO.	BORE	KEYWAY WIDTH LOC.
340-610	800-0610	5/8"	3/16"
340-611	800-0612	3/4"	3/16"
340-635	806-0614	7/8"	3/16" & 1/4"
340-620	800-0615	15/16"	1/4"
340-636	806-0616	1"	3/16" & 1/4"
340-637	806-0618	1-1/8"	1/4" & 5/16"
340-639	806-0620	1-1/4"	1/4" & 5/16"



**Implement Yoke (Spline)**

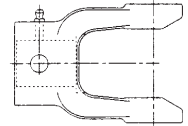
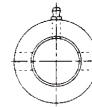
PART NO.	WEASLER NO.	BORE	HOLE SIZE	PRICE
340-642	801-0606	1-3/8 - 6 Spline	.13/64"	



## POWER TAKE OFF YOKES 6 SERIES DOMESTIC

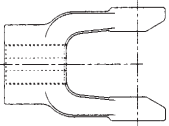
### Implement Yoke (Shear)

PART NO.	WEASLER NO.	BORE	HOLE SIZE
<b>340-693</b> .....	802-0616 .....	1" .....	3/8" .....
<b>340-696</b> .....	802-0620 .....	1-1/4" .....	1/4" .....



### Implement Yoke (Square)

PART NO.	WEASLER NO.	BORE
<b>340-650</b> .....	804-0612 .....	3/4" Square .....
<b>340-652</b> .....	804-0614 .....	7/8" Square .....
<b>340-654</b> .....	804-0616.....	1" Square .....
<b>340-656</b> .....	804-0618 .....	1-1/8" Square .....
<b>340-657</b> .....	804-0620.....	1-1/4" Square .....

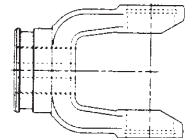


### Clamp Yoke

PART NO.	WEASLER NO.	BORE	KEYWAY
<b>340-670</b> .....	807-0616 .....	1" .....	1/4" .....

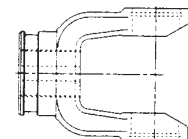
### Shaft Weld Yoke

PART NO.	WEASLER NO.	BORE	USE W/SHAFT PART NO.
<b>340-660</b> .....	300-0600 .....	3/4 X 7/8 Rect. ....	341-300 .....



### Tube Weld Yoke

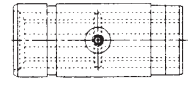
PART NO.	WEASLER NO.	BORE	USE W/TUBE PART NO.
<b>340-661</b> .....	700-0600 .....	1 X 1-1/8 Rect. ....	341-501 .....
<b>340-662</b> .....	701-0600 .....		



## POWER TAKE OFF YOKES 6 SERIES DOMESTIC

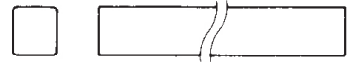
### Slip Sleeve

PART NO.	WEASLER NO.	BORE
340-7000	510-0600	3/4 X 7/8 Rect.
340-7001	808-0612	3/4" Sq.
340-7002	808-0614	7/8" Sq.



### Rectangular Repair Shafting

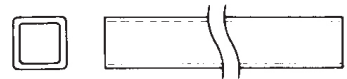
6'		PRICE
PART NO.		
341-3006		\$98.28
341-3016		\$164.87



ALL SHAFTING SOLD AND PRICED PER 6' LENGTHS

### Rectangular Repair Tubing

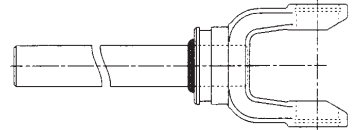
6'		SIZE	
PART NO.	I.D.		O.D.
341-5006	3/4" X 7/8"	1" X 1-1/8"	
341-5016	1" X 1-1/8"	1-1/4" X 1-3/8"	



ALL TUBING SOLD AND PRICED PER 6' LENGTH

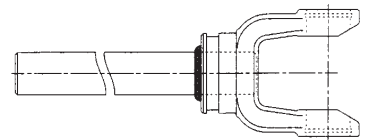
### Yoke & Shaft Assembly

PART NO.	WEASLER NO.	OVERALL DRIV. LENGTH	CROSS & BRG. CENTER TO END
342-633	10000648	48"	38-3/4"



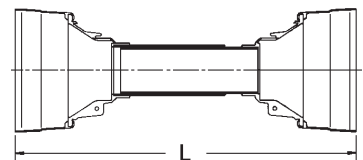
### Yoke & Tube Assembly

PART NO.	WEASLER NO.	OVERALL DRIV. LENGTH	CROSS & BRG. CENTER TO END
342-642	11000648	48"	38-3/4"

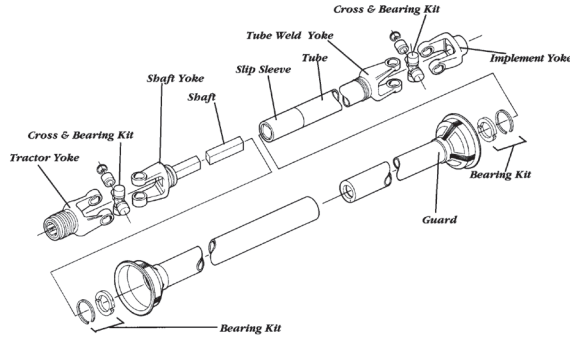


### Plastic Safety Shield

PART NO.	WEASLER NO.	OVERALL DRIV. LENGTH	(L) LENGTH	FLANGE O.D.
342-663	900-0648	48"	43-1/2"	5-1/2"



**POWER TAKE OFF YOKES**



**1000 SERIES DOMESTIC**

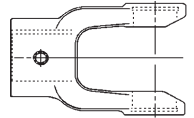
**Cross & Bearing Kit: Inside Lock-Up**

PART NO.	WEASLER NO.	BEARING DIAMETER	LOCK-UP DIMENSION
339-102.....	200-1000.....	15/16"	1-1/2"



**Implement Yoke (Round)**

PART NO.	WEASLER NO.	BORE	KEYWAY WIDTH	LOC.
340-1020 ....	800-0512 .....	3/4" .....	1/4"	3/8 X 16 .....
340-1022 ....	800-0514 .....	7/8" .....	1/4"	3/8 X 16 .....
340-1024 ....	800-0516 .....	1" .....	1/4"	3/8 X 16 .....
340-1030 ....	800-1518 .....	1-1/8" .....	1/4"	3/8 X 16 .....
340-1032 ....	800-1520 .....	1-1/4" .....	1/4"	3/8 X 16 .....



**1875 SERIES DOMESTIC**

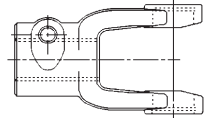
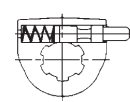
**Cross & Bearing Kit: Inside Lock-Up**

PART NO.	WEASLER NO.	BEARING DIAMETER	LOCK-UP DIMENSION
339-103.....		1"	



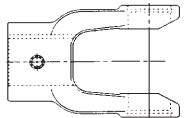
**Tractor Yokes: Quick Disconnect (Pin Type)**

PART NO.	WEASLER NO.	BORE	PIN REPAIR KIT PART NO.
340-1802 ....		1-3/8 - 6 Spline.....	340-1908



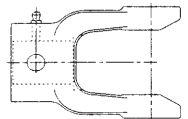
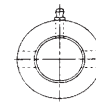
**Implement Yoke (Spline)**

PART NO.	WEASLER NO.	BORE	HOLE SIZE
340-1845 ....		1-3/8 - 6 Spline.....	1/2" .....



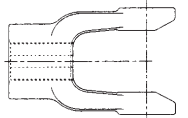
**Implement Yoke (Shear)**

PART NO.	WEASLER NO.	BORE	HOLE SIZE
340-1895 ....		1-3/8" .....	1/4" .....



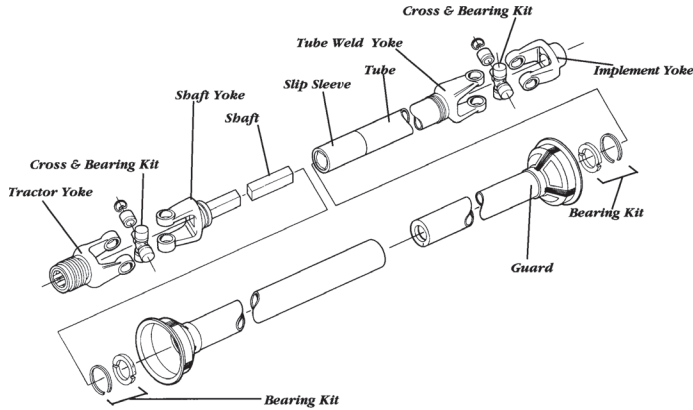
**Implement Yoke (Square)**

PART NO.	WEASLER NO.	BORE
340-1851 .....		1" Square .....
340-1862 .....		1" X 1-1/8" Rect.....





## POWER TAKE OFF YOKES 12-SERIES DOMESTIC



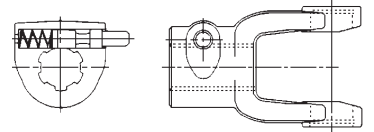
### Cross & Bearing Kit: Inside Lock-Up

PART NO.	WEASLER NO.	BEARING DIAMETER	LOCK-UP DIMENSION
339-12.....	200-1200.....	1-1/16.....	1-13/16.....



### Tractor Yokes: Quick Disconnect (Pin Type)

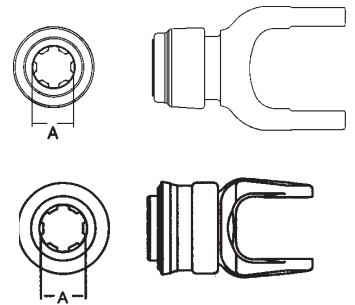
PART NO.	WEASLER NO.	BORE	PIN REPAIR KIT PART NO.
340-1203 ....	102-1221 .....	1-3/8 - 21 Spline.....	340-1901 .....
340-1205 ....	102-1206 .....	1-3/8 - 6 Spline.....	340-1901 .....



### Tractor Yokes: Quick Disconnect (Collar Type)

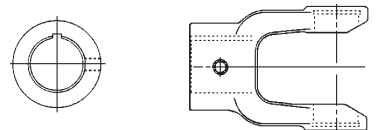
PART NO.	WEASLER NO.	BORE	PIN REPAIR KIT PART NO.
340-1206 ....	100-1206 .....	1-3/8 - 6 Spline.....	13003100 .....
340-1207 ....	100-1221 .....	1-3/8 - 21 .....	13003100 .....
<b>(Collar Type With Ball Shear Device)</b>			
340-1208 ....	104-1206 .....	1-3/8 - 6 Spline.....	13003100 .....
340-1209 ....	104-1221 .....	1-3/8 - 21 Spline .....	13003100 .....

Above yokes use (2) 5/16" Gr. 5 shear bolts



### Implement Yoke (Round)

PART NO.	WEASLER NO.	BORE	KEYWAY WIDTH LOC.
340-1212 ....	800-1212 .....	3/4" .....	3/16".....
340-1213 ....	800-1214 .....	7/8" .....	1/4".....
340-1214 ....	800-1215 .....	15/16".....	1/4".....
340-1215 ....	800-1216 .....	1" .....	1/4".....
340-1217 ....	800-1218 .....	1-1/8".....	1/4".....
340-1218 ....	800-1219 .....	1-3/16".....	1/4".....
340-1238 ....	806-1220 .....	1-1/4".....	1/4" & 5/16".....
340-1224 ....	800-1222 .....	1-3/8".....	5/16".....
340-1225 ....	800-1224 .....	1-1/2".....	3/8".....

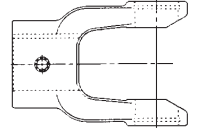
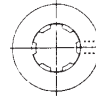


**POWER TAKE OFF YOKES**

**12-SERIES DOMESTIC**

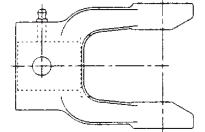
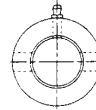
**Implement Yoke (Spline)**

PART NO.	WEASLER NO.	BORE	HOLE SIZE
340-1240	801-1218	1-1/8 - 6 Spline	21/64"
340-1241	801-1206	1-3/8 - 6 Spline	21/64"
340-1242	801-1221	1-3/8 - 21 Spline	21/64"



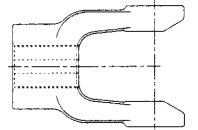
**Implement Yoke (Shear)**

PART NO.	WEASLER NO.	BORE	HOLE SIZE
340-1290	802-1216	1"	5/16"
340-1291	802-1218	1-1/8"	1/4"
340-1292	802-1220	1-1/4"	3/8"
340-1293	802-1222	1-3/8"	1/4"



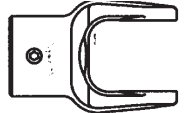
**Implement Yoke (Square)**

PART NO.	WEASLER NO.	BORE
340-1251	804-1214	7/8" Square
340-1252	804-1216	1" Square
340-1254	804-1218	1-1/8" Square
340-1256	804-1220	1-1/4" Square



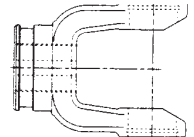
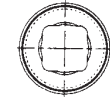
**Implement Yoke (Hex Bore)**

PART NO.	WEASLER NO.	BORE	USE W/SHAFT PART NO.
340-1258	805-1218	1-1/8"	- - -



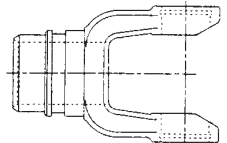
**Shaft Weld Yoke**

PART NO.	WEASLER NO.	BORE	USE W/SHAFT PART NO.
340-1261	300-1200	1" X 1-1/8"	341-301



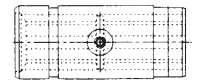
**Tube Weld Yoke**

PART NO.	WEASLER NO.	BORE	USE W/TUBE PART NO.
340-1262	700-1200	1-1/4" X 1-3/8" Rect.	341-501
340-1265	701-1200	2" Round	341-769



**Slip Sleeve**

PART NO.	WEASLER NO.	BORE
340-7003	500-1400	1" X 1-1/8" Rect.



**Rectangular Repair Shafting**

6' PART NO.	SIZE
341-3016	1" x 1-1/8"



ALL SHAFTING SOLD AND PRICED PER 6' LENGTHS

**Rectangular Repair Tubing**

6' PART NO.	I.D.	O.D.
341-5016	1" x 1-1/8"	1-1/4" x 1-3/8"



ALL TUBING SOLD AND PRICED PER 6' LENGTHS

**POWER TAKE OFF YOKES**

**12-SERIES DOMESTIC**

**Round Repair Tubing**

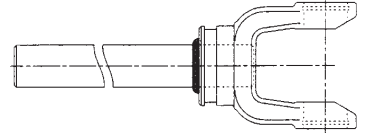
6'					
PART NO.	O.D.	GAUGE	WALL THICKNESS	FOR	SERIES
341-7695	2"	14	.083	12 & 14	



ALL TUBING SOLD AND PRICED PER 6' LENGTHS

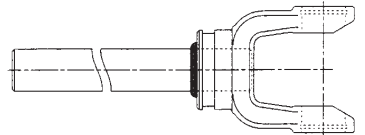
**Yoke & Shaft Assembly**

PART NO.	WEASLER NO.	OVERALL DRIVELINE LENGTH	CROSS & BRG. CENTER TO END
342-1234	10001248	48"	37-3/8"



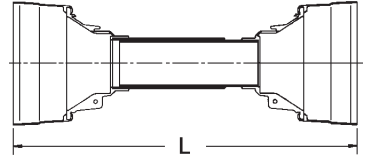
**Yoke & Tube Assembly**

PART NO.	WEASLER NO.	OVERALL DRIVELINE	CROSS & BRG. CENTER TO END
342-1244	11001248	48"	37-3/8"



**Plastic Safety Shield**

PART NO.	WEASLER NO.	OVERALL DRIVELINE	(L) LENGTH	FLANGE O.D.
342-1263	900-1248	48"	41"	5-1/2"



**www.modernagparts.com**

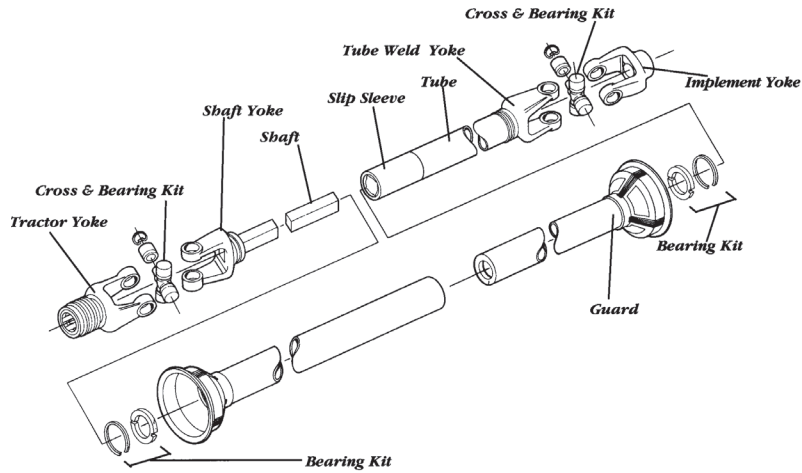
We offer the largest selection of Driveline components anywhere. Call us toll-free today!

Our Customer Service Representatives are available **M-F 8 am - 5:30 pm** and **Saturdays 8 am- 12 pm.**



**MODERN**  
AG PRODUCTS, LTD.

## POWER TAKE OFF YOKES 14-Series Domestic



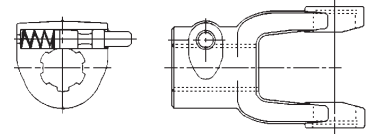
### Cross & Bearing Kit: Outside Lock-Up

PART NO.	WEASLER NO.	BEARING DIAMETER	LOCK-UP DIMENSION
339-14	200-1400	1-1/8"	2-5/8"



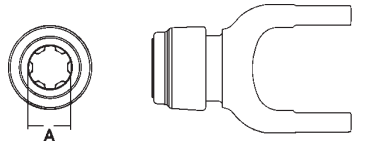
### Tractor Yokes: Quick Disconnect (Pin Type)

PART NO.	WEASLER NO.	BORE	PIN REPAIR KIT PART NO.
340-1403	102-1406	1-3/8" - 21 Spline	340-1908
340-1405	102-1406	1-3/8" - 6 Spline	340-1901



### Tractor Yokes: Quick Disconnect (Collar Type)

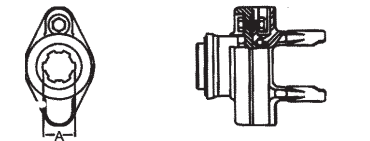
PART NO.	WEASLER NO.	BORE	PIN REPAIR KIT PART NO.
340-1406	100-1406	1-3/8" - 6 Spline	13003000
340-1407	100-1421	1-3/8" - 21 Spline	13003000



### (Collar Type with Ball Shear Device)

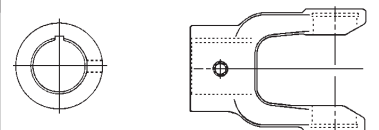
340-1408	104-1406	1-3/8" - 6 Spline	13003100
340-1409	104-1421	1-3/8" - 21 Spline	13003100

Above yokes use (2) 5/16" Gr. 5 shear bolts



### Implement Yoke (Round)

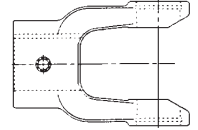
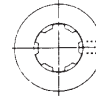
PART NO.	WEASLER NO.	BORE	KEYWAY WIDTH LOC.
340-1415	800-1416	1"	1/4"
340-1436	806-1418	1-1/8"	1/4" & 5/16"
340-1437	806-1419	1-3/16"	1/4" & 5/16"
340-1438	806-1420	1-1/4"	1/4" & 5/16"
340-1425	800-1422	1-3/8"	5/16"
340-1431	800-1424	1-1/2"	3/8"



## POWER TAKE OFF YOKES 14-Series Domestic

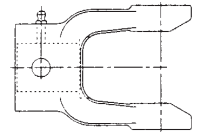
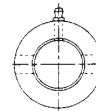
### Implement Yoke (Spline)

PART NO.	WEASLER NO.	BORE	SET SCREW OR DRILL THRU LOC.
340-1440	801-1418	1-1/8 - 6 Spline	21/64"
340-1441	801-1406	1-3/8 - 6 Spline	21/64"
340-1443	801-1420	1-1/4 - 6 Spline	21/64"
340-1442	801-1421	1 3/8 - 21 Spline	21/64"



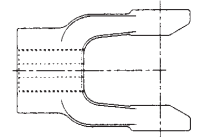
### Implement Yoke (Shear)

PART NO.	WEASLER NO.	BORE	HOLE SIZE
340-1492	802-1418	1-1/8"	1/4"
340-1495	802-1422	1-3/8"	1/2"
340-1496	802-1424	1-1/2"	1/4"
340-1497	802-1420	1-1/4"	1/4"



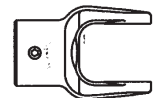
### Implement Yoke (Square)

PART NO.	WEASLER NO.	BORE
340-1450	804-1414	7/8" Square
340-1452	804-1416	1" Square
340-1453	804-1418	1-1/8" Square
340-1454	804-1419	1-3/16" Square
340-1455	804-1420	1-1/4" Square



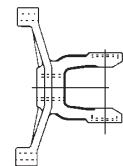
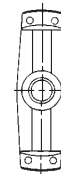
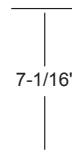
### Implement Yoke (Hex Bore)

PART NO.	WEASLER NO.	BORE
340-1458	805-1420	1-1/4"



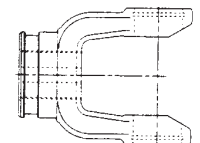
### Implement Yoke (Torque) & Bushing

PART NO.	WEASLER NO.	DESCRIPTION
340-1475	803-1400	Yoke
340-1915	-----	Bushing



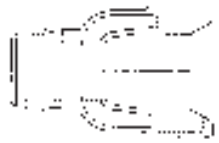
### Shaft Weld Yoke

PART NO.	WEASLER NO.	BORE	USE W/SHAFTS PART NO.
340-1460	300-1400	1" X 1-1/8" Rect.	341-3016
340-1462	301-1400	1-5/16 - 20 Spline	-----



### Tube Weld Yoke

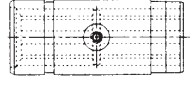
PART NO.	WEASLER NO.	BORE	USE W/TUBES PART NO.
340-1461	700-1400	1-1/4" X 1-3/8" Rect.	341-5016
340-1465	701-1400	2" Round	341-7695



## POWER TAKE OFF YOKES 14-Series Domestic

### Slip Sleeve

PART NO.	WEASLER NO.	BORE	FOR TUBES
<b>340-7003</b>	500-1400	1" X 1-1/8" Rect.	341-7695



### Rectangular Repair Shafting

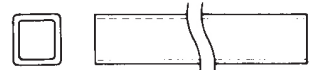
6' PART NO.	SIZE
<b>341-3016</b>	1" x 1-1/8"



ALL SHAFTING SOLD AND PRICED PER 6' LENGTHS

### Rectangular Repair Tubing

6' PART NO.	I.D.	O.D.
<b>341-5016</b>	1" x 1-1/8"	1-1/4" x 1-3/8"



ALL TUBING SOLD AND PRICED PER 6' LENGTHS

### Round Repair Tubing

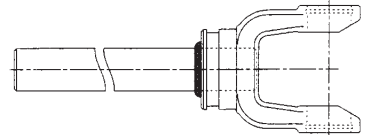
6' PART NO.	O.D.	GAUGE	WALL THICKNESS	FOR SERIES
<b>341-7695</b>	2"	14	.083	12 & 14



ALL TUBING SOLD AND PRICED PER 6' LENGTHS

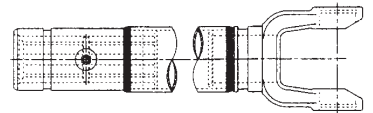
### Yoke & Shaft Assembly

PART NO.	WEASLER NO.	OVERALL DRIVELINE LENGTH	CROSS & BRG. CENTER TO END
<b>342-1433</b>	10001448	48"	35-5/8"
<b>342-1434</b>	10001460	60"	47-5/8"



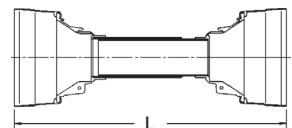
### Yoke, Tube & Sleeve Assembly

PART NO.	WEASLER NO.	OVERALL DRIVELINE LENGTH	CROSS & BRG. CENTER TO END
<b>342-1443</b>	11001448	48"	36"
<b>342-1444</b>	11001438	38"	26-1/8"
<b>342-1445</b>	11001460	60"	48-1/8"

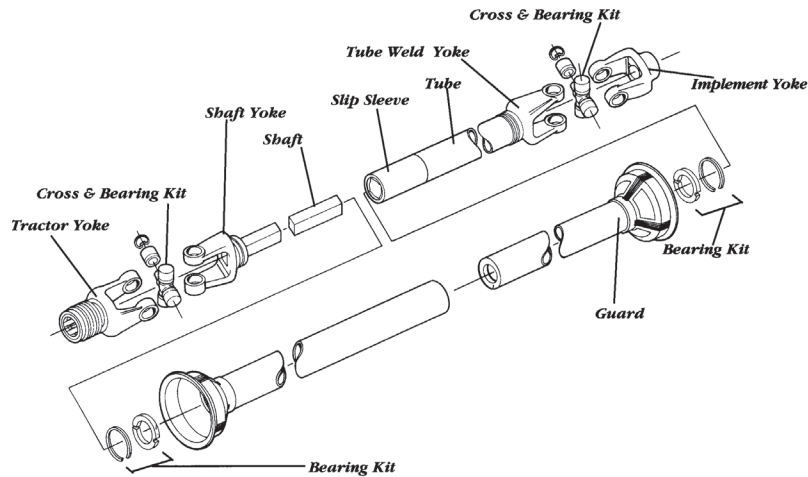


### Plastic Safety Shield

PART NO.	WEASLER NO.	OVERALL DRIVELINE LENGTH	(L) LENGTH	FLANGE O.D.
<b>342-1263</b>	900-1248	48"	41"	5-1/2"



## POWER TAKE OFF YOKES 35-Series Domestic



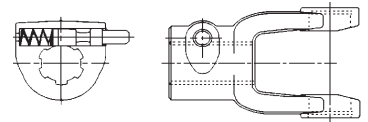
### Cross & Bearing Kit: Outside Lock-Up

PART NO.	WEASLER NO.	BEARING DIAMETER	LOCK-UP DIMENSION
339-35	200-3500	1-1/4	3-9/32



### Tractor Yokes: Quick Disconnect (Pin Type)

PART NO.	WEASLER NO.	BORE	PIN REPAIR KIT PART NO.
340-3503	102-3521	1-3/8 - 21 Spline	340-1901
340-3504	102-3520	1-3/4 - 20 Spline	340-1905
340-3505	102-3506	1-3/8 - 6 Spline	340-1901



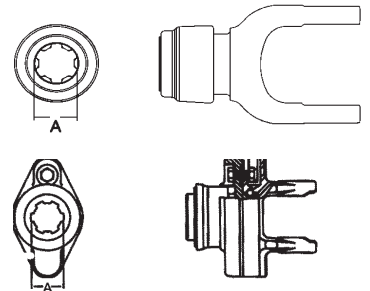
### Tractor Yokes: Quick Disconnect (Collar Type)

PART NO.	WEASLER NO.	BORE	PIN REPAIR KIT CAT. NO.
340-3506	101-3506	1-3/8 - 6 Spline	13003000
340-3507	101-3521	1-3/8 - 21 Spline	13003000

**(Collar Type with Ball Shear Device)**

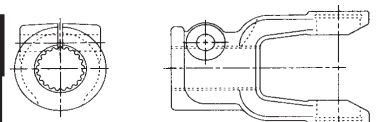
340-3508	104-3506	1-3/8 - 6 Spline	13003100
340-3509	104-3521	1-3/8 - 21 Spline	13003100

Above yokes use (2) 3/8" Gr. 5 shear bolts



### Implement Yokes (Clamp)

PART NO.	BORE	DRILL THRU HOLE SIZE	BOLT
340-3570	1-3/8 - 6 Spline	21/64"	5/16"
340-3571	1-3/8 - 21 Spline	17/32"	1/2"
340-3572	1-3/4 - 20 Spline	17/32"	1/2"
340-3573	1-3/4 - 27 Spline	17/32"	1/2"

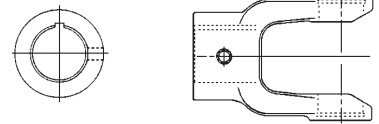


## POWER TAKE OFF YOKES

### 35-Series Domestic

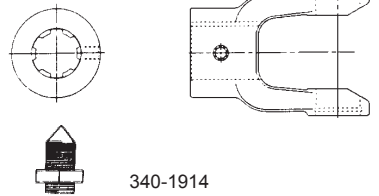
#### Implement Yokes (Round)

PART NO.	WEASLER NO.	BORE	KEYWAY WIDTH LOC.
<b>300-20648</b> .....	803-4400 .....		Yoke .....
<b>340-1915</b> .....			Bushing .....



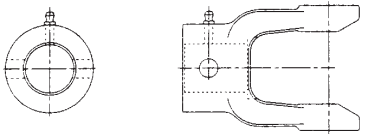
#### Implement Yokes (Spline)

PART NO.	WEASLER NO.	BORE	HOLE SIZE



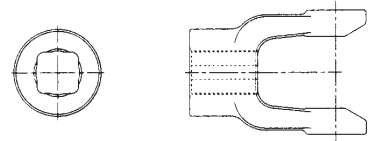
#### Implement Yokes (Shear)

PART NO.	WEASLER NO.	BORE	HOLE SIZE



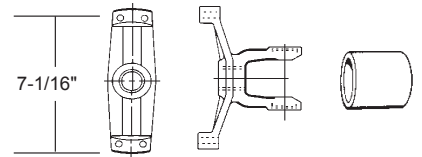
#### Implement Yokes (Square)

PART NO.	WEASLER NO.	BORE (SQUARE)



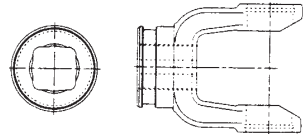
#### Implement Yoke (Torque) & Bushing

PART NO.	WEASLER NO.	DESCRIPTION



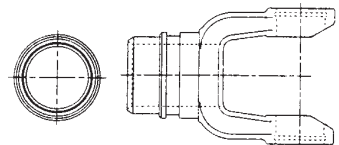
#### Shaft Weld Yoke

PART NO.	WEASLER NO.	BORE	USE W/SHAFTS PART NO.
<b>340-3552</b> ...	300-3500 .....	1-3/16 Square .....	341-2086 .....
<b>340-3557</b> ...	301-3500 .....	1-5/16" - 20 Spline.....	
<b>340-3558</b> ...	302-3500 .....	1-11/16" - 20 Spline.....	



#### Tube Weld Yokes

PART NO.	WEASLER NO.	BORE (ROUND)	USE W/TUBES PART NO.
<b>340-3566</b> .....	701-3500 .....	2-1/8" .....	341-7775 .....
<b>340-3567</b> .....	703-3500 .....	2-1/4" .....	341-7835 .....
<b>340-3568</b> .....	702-3500 .....	2-1/8" .....	USES 14 GA TUBE .....





## POWER TAKE OFF YOKES 35-Series Domestic

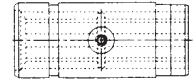
### Slip Sleeves

PART NO.	WEASLER NO.	BORE (SQUARE)	FOR TUBES
----------	-------------	---------------	-----------

340-7012	500-3500	1-3/16"	341-7775
340-7013	501-3500	1-3/16"	341-7835

### Splined Slip Sleeves

340-7014	502-3500	1-5/16" - 20 Spline	
340-7015	503-3500	1-11/16" - 20 Spline	



### Square Repair Shafting

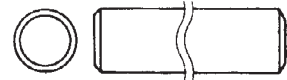
6' PART NO.	SIZE
341-2086	1-3/16"



ALL SHAFTING SOLD AND PRICED PER 6' LENGTHS

### Round Repair Tubing

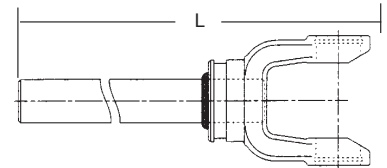
6' PART NO.	O. D.	GAUGE	WALL THICKNESS	FOR SERIES
341-7775	2-1/8"	11	120	35
341-7835	2-1/4"	11	120	35



ALL TUBING SOLD AND PRICED PER 6' LENGTHS

### Yoke & Shaft Assembly

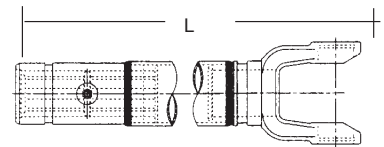
PART NO.	O.E.M. NO.	OVERALL DRIVELINE LENGTH	(L) END TO END
342-3531	327	31"	18-1/2"
342-3532	128	36"	23-1/4"
342-3533	332	43"	28-3/4"
342-3534	402	53"	38"
342-3535	10003548	48"	34-1/4"
342-3537	10003560	60"	44.94"



1-3/16" SQ. SHAFTING

### Yoke, Tube & Sleeve Assembly

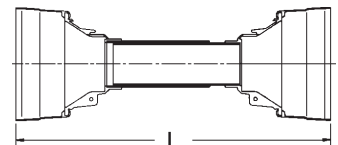
PART NO.	O.E.M. NO.	OVERALL DRIVELINE LENGTH	(L) END TO END
342-3541	326	31"	18-1/8"
342-3542	127	36"	23-1/4"
342-3543	331	43"	29"
342-3544	401	53"	40-1/4"
342-3545	11003548	48"	35-1/2"
342-3546	11003535	35"	21-11/16"
342-3547	11003560	60"	46-11/16"



FOR 1-3/16" SQ. SHAFTING

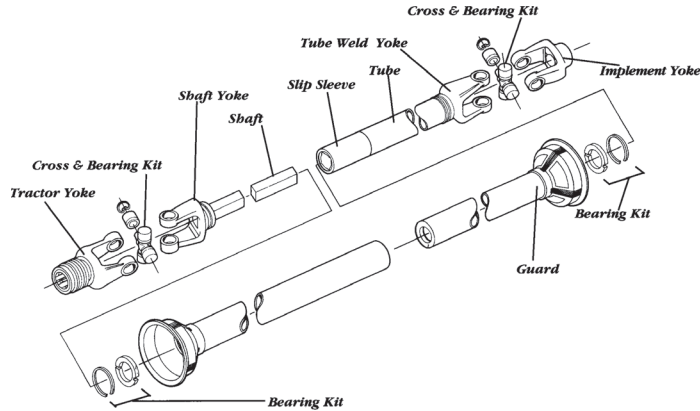
### Plastic Safety Shield

PART NO.	WEASLER NO.	OVERALL DRIVELINE LENGTH	(L) LENGTH	FLANGE O.D.
342-3563	900-3548	48"	37-1/2"	6-3/4"



**POWER TAKE OFF YOKES**

**44-Series Domestic**



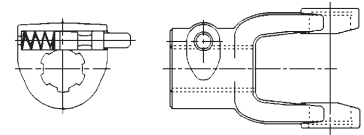
**Cross & Bearing Kit: Inside Lock-Up**

PART NO.	WEASLER NO.	BEARING DIAMETER	LOCK-UP DIMENSION
339-44	200-4400	1-5/16	2-51/64



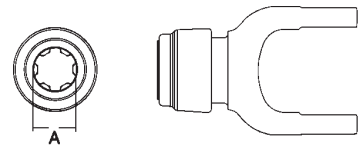
**Tractor Yokes: Quick Disconnect (Pin Type)**

PART NO.	WEASLER NO.	BORE	PIN REPAIR KIT PART NO.
340-4403	102-4421	1-3/8 - 21 Spline	340-1901
340-4404	102-4420	1-3/4 - 20 Spline	340-1910
340-4405	102-4406	1-3/8 - 6 Spline	340-1901



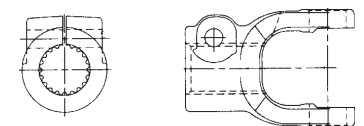
**Tractor Yokes: Quick Disconnect (Collar Type)**

PART NO.	WEASLER NO.	BORE	PIN REPAIR KIT PART NO.
340-4406	101-4406	1-3/8 - 6 Spline	13003000
340-4407	101-4421	1-3/8 - 21 Spline	13003000
340-4408	101-4420	1-3/4 - 20 Spline	13004020



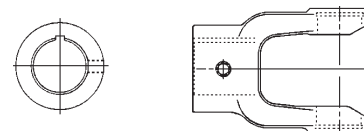
**Implement Yokes (Clamp)**

PART NO.	BORE	DRILL THRU HOLE SIZE	BOLT FIT
340-4472	1-3/4 - 20 Spline	41/64"	5/8"
340-4470	1-3/8 - 6 Spline	—	—
340-4471	1-3/8 - 21 Spline	—	—



**Implement Yokes (Round)**

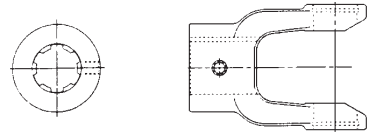
PART NO.	WEASLER NO.	BORE	KEYWAY WIDTH LOC.
340-4411	800-4420	1-1/4"	1/4"
340-4412	800-4422	1-3/8"	5/16"
340-4417	806-4422	1-3/8"	5/16" & 1/4"
340-4414	800-4424	1-1/2"	3/8"
340-4416	800-4428	1-3/4"	3/8"
340-4418	800-4423	1-7/16"	3/8"
340-4419	800-4426	1-5/8"	3/8"
340-4420	800-4432	2"	1/2"



## POWER TAKE OFF YOKES 44-Series Domestic

### Implement Yoke (Spline)

PART NO.	WEASLER NO.	BORE	HOLE SIZE
340-4441	801-4406	1-3/8" - 6 Spline	21/64"
340-4442	801-4421	1-3/8" - 21 Spline	- - -



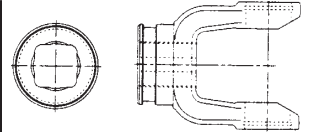
### Implement Yoke (Torque) & Bushing

PART NO.	WEASLER NO.	DESCRIPTION
300-20648	803-4400	Yoke
340-1915		Bushing



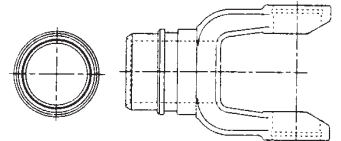
### Shaft Weld Yoke

PART NO.	WEASLER NO.	BORE	USE W/SHAFTS PART NO.
340-4453	300-4400	1-5/16 Square	341-2106
340-4454	302-4400	1-11/16" - 20 Spline	



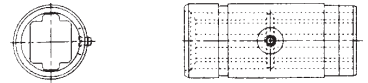
### Tube Weld Yoke

PART NO.	WEASLER NO.	BORE (ROUND)	USE W/TUBES PART NO.
340-4465	701-4400	2-1/2"	341-7955



### Slip Sleeve

PART NO.	WEASLER NO.	BORE (SQUARE)	FOR TUBES
340-7030	500-4400	1-5/16"	341-7955



### Square Repair Shafting

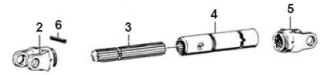
6' PART NO.	SIZE
341-2106	1-5/16"



ALL SHAFTING SOLD AND PRICED PER 6' OR 12' LENGTHS

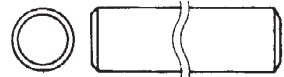
### 20 Spline Shaft

PART NO.	SIZE
M404-2120	1-5/16" X 3'



### Round Repair Tubing

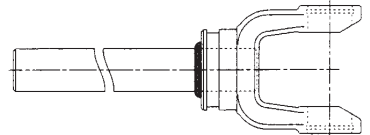
6' PART NO.	O. D.	GAUGE	WALL THICKNESS	FOR SERIES
341-7955	2-1/2"	10	.134	44 & 55



ALL TUBING SOLD AND PRICED PER 6' LENGTHS

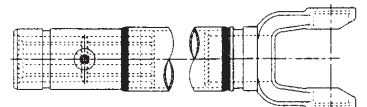
### Yoke & Shaft Assembly

PART NO.	O.E.M. NO.	OVERALL DRIVE LENGTH	CROSS & BRG. CENTER TO END
342-4434	10004448	48"	33-1/4"
342-4435	10004460		45.12"



### Yoke, Tube & Sleeve Assembly

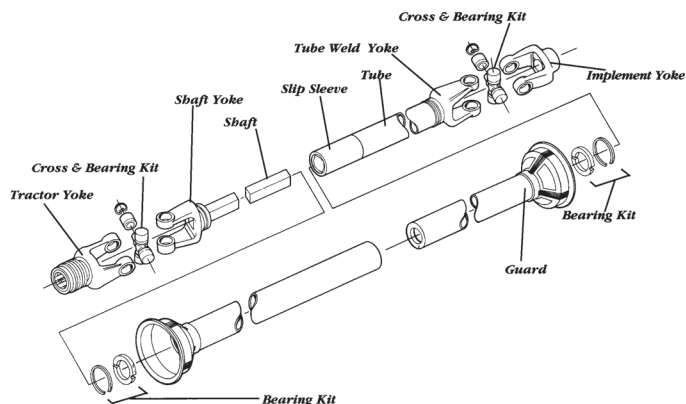
PART NO.	WEASLER NO.	OVERALL DRIVE LENGTH	CROSS & BRG. CENTER TO END
342-4444	11004448	48"	33-1/2"
342-4445	11004460	60"	45-5/8"



**MODERN**  
AG PRODUCTS, LTD.

## POWER TAKE OFF YOKES

### 55-Series Domestic



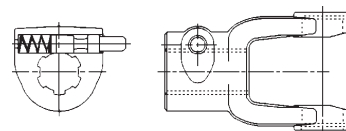
#### Cross & Bearing Kit: Outside Lock-Up

PART NO.	WEASLER NO.	BEARING DIAMETER	LOCK-UP DIMENSION
339-55	200-5500	1-17/32	4-5/16



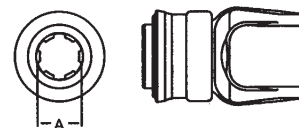
#### Tractor Yokes: Quick Disconnect (Pin Type)

PART NO.	WEASLER NO.	BORE	PIN REPAIR KIT PART NO.
340-5502	102-5506	1-3/8 - 6 Spline	340-1901
340-5503	102-5521	1-3/8 - 21 Spline	340-1902
340-5504	102-5520	1-3/4 - 20 Spline	340-1905



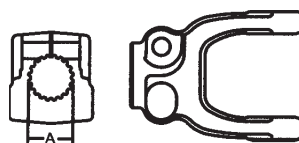
#### Tractor Yokes: Quick Disconnect (Collar Type)

PART NO.	WEASLER NO.	BORE	PIN REPAIR KIT PART NO.
340-5506	101-5506	1-3/8 - 6 Spline	13004000
340-5507	101-5521	1-3/8 - 21 Spline	13004000



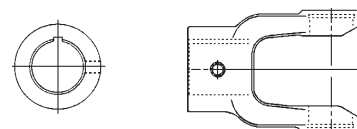
#### Clamp Yoke

PART NO.	WEASLER NO.	BORE	USE W/SHAFTS PART NO.
340-5570	807-5520	1/3/4" - 20 Spline	- - -



#### Implement Yoke (Round)

PART NO.	WEASLER NO.	BORE	KEYWAY
340-5512	800-5522	1-3/8"	5/16"
340-5513	800-5524	1-1/2"	3/8"
340-5514	800-5526	1-5/8"	3/8"
340-5515	800-5528	1-3/4"	3/8"
340-5516	800-5532	2"	1/2"

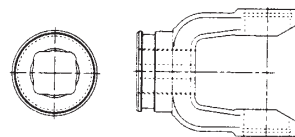


## POWER TAKE OFF YOKES

### 55-Series Domestic

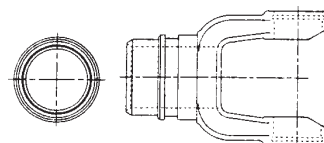
#### Shaft Weld Yoke

PART NO.	WEASLER NO.	BORE	USE W/SHAFTS PART NO.
340-5553	300-5500	1-5/16 Square	341-2106
340-5554	302-5500	1-11/16" - 20 Spline	



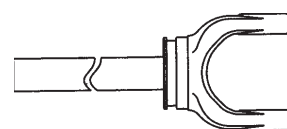
#### Tube Weld Yoke

PART NO.	WEASLER NO.	BORE (ROUND)	USE W/TUBES PART NO.
340-5565	701-5500	2-1/2"	341-7955



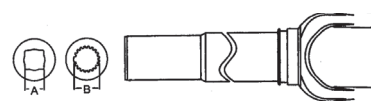
#### Yoke & Shaft Assembly

PART NO.	WEASLER NO.	OVERALL DRIVE LENGTH	CROSS & BRG. CENTER TO END
342-5530	10005548		32.76"



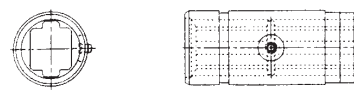
#### Yoke, Tube & Sleeve Assembly

PART NO.	WEASLER NO.	OVERALL DRIVE LENGTH	CROSS & BRG. CENTER TO END
342-5531	11005548	48"	33-3/8"



#### Slip Sleeve

PART NO.	WEASLER NO.	BORE (SQUARE)	FOR TUBES
340-7030	500-4400	1-5/16"	341-7955



#### Square Repair Shafting

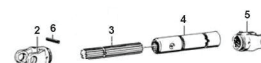
6' PART NO.	SIZE
341-2106	1-5/16"



ALL SHAFTING SOLD AND PRICED PER 6' LENGTHS

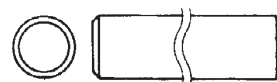
#### 20 Spline Shaft

PART NO.	SIZE
M404-2720	1-11/16" X 3'



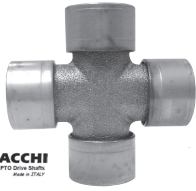
#### Round Repair Tubing

6' PART NO.	O. D.	GAUGE	WALL THICKNESS	FOR SERIES
341-7955	2-1/2"	10	134	44 & 55

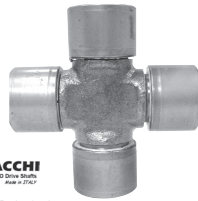


ALL TUBING SOLD AND PRICED PER 6' LENGTHS

**METRIC U-JOINT REPAIR KITS**



**343-1201** • MFG NO. 1-0120  
 Series: 1  
 Bear Dia: 22mm , 7/8"  
 Cross Length: 54mm, 2-1/8"

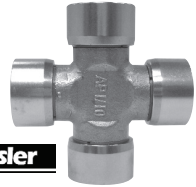


**343-1202** • MFG NO. 2-0521  
 Series: 5  
 Bear Dia: 30.2 mm , 1-3/16"  
 Cross Length: 80mm, 3-5/32"

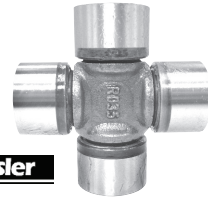


**Eurocardan**

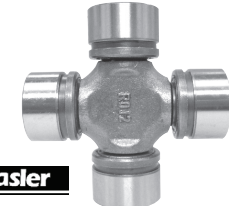
**343-1203** • MFG NO. 200-6794  
 Series: 7  
 Bear Dia: 35 mm , 1-3/8"  
 Cross Length: 94mm, 3-45/64"



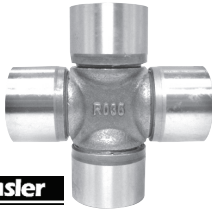
**343-1205** • MFG NO. 1-1011  
 Series: W2100  
 Bear Dia: 22mm , 7/8"  
 Cross Length: 55mm, 2-11/64"



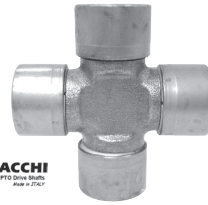
**343-1206** • MFG NO. 200-7676  
 Series: W2400  
 Bear Dia: 32 mm , 1-17/64"  
 Cross Length: 76mm, 3"



**343-1207** • MFG NO. 200-7890  
 Series: WII  
 Bear Dia: 34 mm , 1-11/8"  
 Cross Length: 90mm, 3-35/64"



**343-1208** • MFG NO. 200-7989  
 Series: W2500  
 Bear Dia: 36mm , 1-13/32"  
 Cross Length: 89mm, 3-1/2"



**343-1209** • MFG NO. 1-0221  
 Series: 2/W220  
 Bear Dia: 24 mm , 15/16"  
 Cross Length: 61mm, 2-13/32"



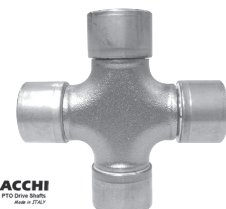
**343-1210** • MFG NO. 1-0321  
 Series: 3/WI  
 Bear Dia: 27 mm , 1-1/16"  
 Cross Length: 70mm, 2-49/64"



**343-1211** • MFG NO. 1-0421  
 Series: 4/W2300  
 Bear Dia: 27mm , 1-1/16"  
 Cross Length: 74.5mm, 2-15/16"



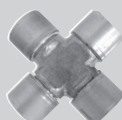
**343-1212** • MFG NO. 30621  
 Series: 6/W220  
 Bear Dia: 30 mm , 1-3/16"  
 Cross Length: 92mm, 3-5/8"



**343-1214** • MFG NO. 3-0821  
 Series: 8  
 Bear Dia: 35 mm , 1-3/8"  
 Cross Length: 106.5 mm, 4-3/16"



**344-2202**  
 MFG NO. 200-7491  
 Series: W2380



**344-2203**  
 MFG NO. 200-7694  
 Series: W2480



**343-2204**  
 Series: W2580



**412060012**  
 Series: CV6



**344-2204**  
 MFG NO. 412080012  
 Series: 8

**C.V. U-JOINT  
 REPAIR KITS**

## Drivelines are Supplied Complete with Shields

**METRIC DRIVELINE ASSEMBLIES**

ITEM NUMBER	SIZE	LENGTH	TRACTOR END	IMPL END	COMMON APPLICATION
343-143	.2400	40"	1 3/8-6QD	1 3/8-6QD	GENERATOR TO 40KW
343-144	.6	40"	1 3/8-6QD	1 3/8-6QD	GENERATOR TO 50KW
343-145	.2500	40"	1 3/8-6QD	1 3/8-6QD	GENERATOR TO 75KW
343-110	.2	32.5"	1 3/8-6QD	1 3/8-6 FF1 CLUTCH	.40 & 48" TILLERS
2070BA60098	.2	33"	1 3/8-6QD	1 3/8-6 SHEAR TL	.40 & 48" TILLERS
4080BA60098	.4	33"	1 3/8-6QD	1 3/8-6 SHEAR TL	.60 & 72" TILLERS
342-3506	.44	40.75"	1 3/8-6QD		JOHN DEERE BALERS Tractor 1/2
342-3507	.44	40.75"	1 3/8-21QD		JOHN DEERE BALERS Tractor 1/2
343-159	.2480	48"	1 3/8-6QD	1 3/8-6QD	ROUND BALERS
343-100	.2	51.4"	1 3/8-6QD	1 1/4RB SHEAR PIN	POST HOLE DIGGERS
343-124	.4	51"	1 3/8-6QD	1 1/4RB SHEAR PIN	POST HOLE DIGGERS
343-140	.2	44"	1 3/8-6QD	1RB W/KEYWAY	FERTILIZER BUGGY
343-141	.5	24"	1 3/8-6QD	1 3/8-6QD	MANURE SPREADER
343-103	.1	27"	1 3/8-6QD	1 3/8-6QD	FERTILIZER SPREADERS
343-146	.2100	40"	1 3/8-6QD	1 3/8-6QD	SPRAYER PUMP
343-147	.2100	54"	1 3/8-6QD	1 3/8-6QD	GRAIN AUGER
343-154	.5	38"	1 3/8-6QD	1 3/8-6 RADIAL PIN CLUTCH	DISC MOWERS
343-111	.2	57"	1 3/8-6QD	1 3/8-6 RADIAL PIN CLUTCH	TEDDERS
343-113	.4	54"	1 3/8-6QD	1 3/8-6 RADIAL PIN CLUTCH	TEDDERS
343-112	.3	54"	1 3/8-6QD	1 3/8-6 RADIAL PIN CLUTCH	TEDDERS
343-160	.2400	54"	1 3/8-6QD	1 3/8-6 RADIAL PIN CLUTCH	TEDDERS
343-130	.4	32"	1 3/8-6QD	1 3/8RB SHEAR PIN	.4' ROTARY CUTTERS
343-131	.4	43"	1 3/8-6QD	1 3/8-6QD	.5' ROTARY CUTTERS
343-134	.4	37.8"	1 3/8-6QD	1 3/8RB SHEAR PIN	.5' ROTARY CUTTERS
343-136	.4	37"	1 3/8-6QD	1 3/8-6 FF1 CLUTCH	.5' CUTTERS & TILLERS
343-132	.4	52"	1 3/8-6QD	1 3/8RB SHEAR PIN	.5' PULL CUTTERS
401-0307	.4	41"	1 3/8-6QD	1 3/8-6 FF1 CLUTCH	.5' ROTARY CUTTERS
343-151	.5	38"	1 3/8-6QD	1 3/8-6 FF1 CLUTCH	.5' ROTARY CUTTERS
401-0312-03	.6	45"	1 3/8-6QD	1 3/8-6 FF2 CLUTCH	.5' & 6' HD ROTARY CUTTER
343-150	.5	43"	1 3/8-6QD	1 3/8-6QD	.5' & 6' ROTARY CUTTERS
343-135	.4	42.5"	1 3/8-6QD	1 3/8RB SHEAR PIN	.6' ROTARY CUTTER
343-153	.5	44"	1 3/8-6QD	1 3/8RB SHEAR PIN	.6' ROTARY CUTTER
401-0306-6SC	.4	48"	1 3/8-6QD	1 3/8-6 FF1 CLUTCH	.6' ROTARY CUTTER
401-0306-6	.4	48.5"	1 3/8-6QD	1 3/8RB SHEAR PIN	.6' ROTARY CUTTER
401-0306-6B	.4	48"	1 3/8-6QD	1 3/8RB	.6' ROTARY CUTTER
343-155	.5	53"	1 3/8-6QD	1 3/8RB SHEAR PIN	.6' PULL CUTTERS
343-156	.6	52"	1 3/8-6QD	1 3/8RB SHEAR PIN	.6' PULL CUTTERS
343-152	.5	45"	1 3/8-6QD	1 3/8-6 FF1 CLUTCH	.6' & 8' ROTARY CUTTERS
401-0317-01	.6	60"	1 3/8-6QD	1 3/8-6 FF2 CLUTCH	.7' HD ROTARY CUTTER
343-171	.6	54.5"	1 3/8-6QD	1 3/8-6 FF2 CLUTCH	.7' CUTTERS & TILLERS
343-173	.6	61"	1 3/4-20QD	1 3/4-20 FF4 CLUTCH	.7' CUTTERS
343-174	.6	61"	1 3/8-6QD	1 3/4-20 FF4 CLUTCH	.7' CUTTERS
401-0325	.6	72"	1 3/8-6QD	1 3/8-6 FF2 CLUTCH	.10' PULL CUTTER
401-0325-01	.6	72"	1 3/8 21 SPLINE	1 3/8-6 FF2 CLUTCH	.10' PULL CUTTER
401-0325-02	.6	72"	1 3/8-6QD	1 3/8 YOKE	PULL TYPE MOWER
401-0325-03	.6	72"	1 3/4 20 SPLINE	1 3/8-6 FF2 CLUTCH	.10' MOWER - 1,000 RPM
401-0325-05	.6	72"	1 3/8-6QD	1 3/8 20 CLUTCH	PULL TYPE MOWER
401-0325-06	.6	72"	1 3/8 21 SPLINE	1 3/8 20 CLUTCH	PULL TYPE MOWER

# METRIC DRIVELINE ASSEMBLIES

ITEM NUMBER	SIZE	LENGTH	TRACTOR END	IMPL END	COMMON APPLICATION
415-0001-02	6	56"	1 3/4-20QD	1 3/4-20 TAPER BOLT	15' BATWING CUTTERS
415-0001-03	8	56"	1 3/8-6QD	1 3/4-20 TAPER BOLT	15' BATWING CUTTERS
415-0008	6	66.75"	1 3/8-6 TAPER BOLT	1 3/8-6 FF3 CLUTCH	WING SHAFT 15' CUTTER
415-1597	2580	55"	1 3/8-6QD	1 3/4-20 CLAMP BOLT	15' BATWING CUTTERS
415-1597-01	2580	55"	1 3/8-21QD	1 3/4-20 CLAMP BOLT	15' BATWING CUTTERS
415-1597-02	2580	55"	1 3/4-20QD	1 3/4-20 CLAMP BOLT	15' BATWING CUTTERS
415-1597-03	2580	55"	1 3/8-6QD	1 3/8-6 CLAMP BOLT	15' BATWING CUTTERS
415-1597-04	2580	55"	1 3/8-21QD	1 3/8-6 CLAMP BOLT	15' BATWING CUTTERS
415-1597-05	2580	55"	1 3/4-20QD	1 3/8-6 CLAMP BOLT	15' BATWING CUTTERS
415-1597-06	2580	55"	1 3/8-6QD	1 3/8-21 CLAMP BOLT	15' BATWING CUTTERS
415-1597-07	2580	55"	1 3/4-20QD	1 3/8-21 CLAMP BOLT	15' BATWING CUTTERS
415-1598	2580	32"	1 3/4-20 TAPER BOLT	1 3/4-20 FF3 CLUTCH	15' BATWING CUTTERS
415-1599	6	67"	1 3/4-20 TAPER BOLT	1 3/4-20 FF3 CLUTCH	WING SHAFT 15' CUTTER
343-119	2	39"	1 3/8-6QD	1 3/8-6QD	FINISH MOWER
343-120	3	44"	1 3/8-6QD	1 3/8-6QD	FINISH MOWER
343-148	4	33"	1 3/8-6QD	1 3/8-6QD	FINISH MOWER
415-14607950	2580	59"	1 3/8-21QD	1 3/8-21 CLAMP BOLT	PEANUT PICKERS
415-14707950	2580	59"	1 3/4-20QD	1 3/4-20 CLAMP BOLT	PEANUT PICKERS
7E58121UCR07	8	54"	1 3/8-6QD		PEANUT PICKERS Tractor 1/2
93-14507950	2580	59"	1 3/8-6QD 80° CV		PEANUT PICKERS Tractor 1/2
93-14607950	2580	59"	1 3/8-21QD 80° CV		PEANUT PICKERS Tractor 1/2
93-14707950	2580	59"	1 3/4-20QD 80° CV		PEANUT PICKERS Tractor 1/2
WU7654121UCR07096	4	62"	1 3/8-6QDCV	1 3/8-6 OR CLUTCH	DISC MOWER HAY TEDDERS

OVERALL LENGTH IS MEASURED FROM END OF YOKE

Common applications are listed for reference only. These drivelines can be used for many applications. Metric Replacement Driveline Assemblies are supplied complete with shield. Drivelines will interchange with Bondioli & Pavesi and Walterscheid drivelines.

# www.modernagparts.com

We offer the largest selection of Driveline components anywhere. Call us toll-free today!

Our Customer Service Representatives are available **M-F 8 am - 5:30 pm** and **Saturdays 8 am- 12 pm.**



**MODERN**  
AG PRODUCTS, LTD.





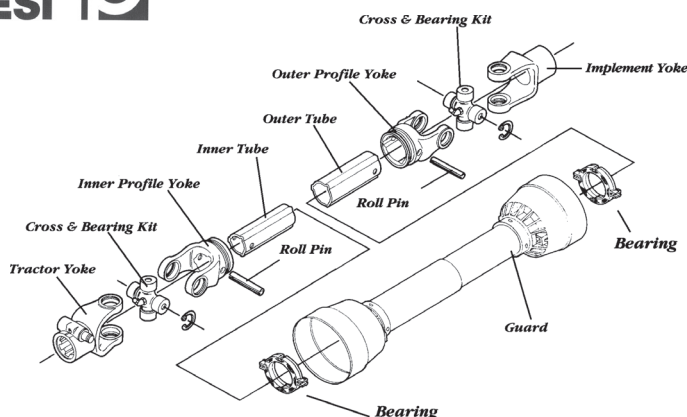
**BONDIOLI & PAVESI**



**METRIC DRIVELINE COMPONENTS**



PTO Drive Shafts  
Made in ITALY



**QUICK DISCONNECT YOKE PIN KITS**

<b>PART NO.</b>	<b>WEASLER NO.</b>	<b>Repair Kit For</b>
343-1931 .....	13006121 .....	Bondioli & Pavesi Spring External to Yoke .....
343-1933 .....	13007121 .....	Walterscheid. Retained in Yoke by a Spring Pin .....
343-1934 .....	13007138 .....	Walterscheid. Retained in Yoke by a Washer .....



**ROLL PINS**



<b>PART NO.</b>	<b>WEASLER NO.</b>	<b>SIZE M.M.</b>	<b>BONDIOLI SERIES</b>	<b>WALTERSCHEID SERIES</b>
343-1501 .....	508-0850 .....	8 X 50 .....	1 .....	2100/100 .....
343-1502 .....	508-0860 .....	8 X 60 .....	2,3, & 4 .....	2100, 2200 .....
343-1504 .....	508-1065 .....	10 X 65 .....	.....	660/1 & 2300/210 .....
343-1505 .....	508-1075 .....	10 X 75 .....	5 .....	2400/35 .....
343-1506 .....	508-1080 .....	10 X 80 .....	6, 7 .....	220 / 720 .....
343-1507 .....	508-1280 .....	12 X 80 .....	8 .....	.....
343-1508 .....	508-0880 .....	8 X 80 .....	4 .....	.....

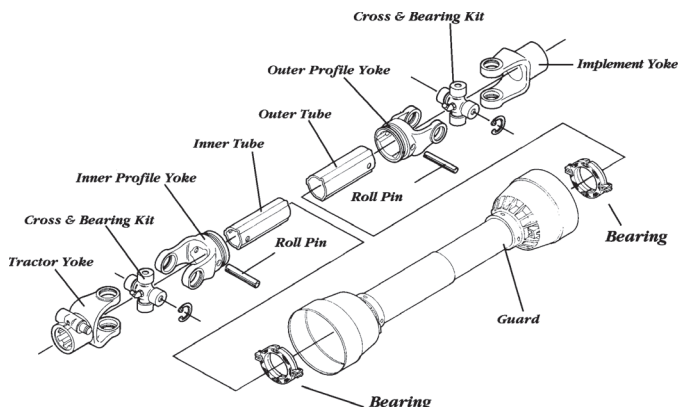
<p><b>New</b> <b>BONDIOLI</b> Roll Pins</p>	<b>OUTER YOKE</b>	<b>INNER YOKE</b>	
	Series 1	341036000 ... 8x45(mm)...	341037000.... 8x40(mm)...
	Series 2	341048000 ... 8x55(mm)...	341036000.... 8x45(mm)...
	Series 5	341053000 ... 10x70(mm).	341002000.... 10x60(mm).
	Series 8	341054000 ... 12x90(mm).	341055000.... 12x75(mm).



**POWER TAKE OFF YOKES**



**BONDIOLI & PAVESI 1 SERIES METRIC**



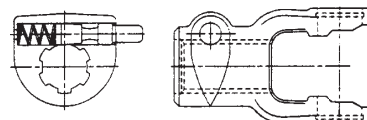
**Cross & Bearing Kit: Outside Lock-Up**

PART NO.	WEASLER NO.	BEARING DIAMETER		OVERALL LENGTH	
		mm	inches	mm	inches
343-1201	200-6154	22	7/8	54	2 1/8



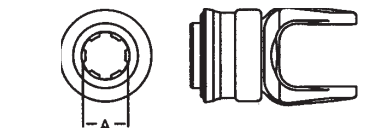
**Tractor Yokes: Pin Type Quick Disconnect**

PART NO.	WEASLER NO.	BORE
343-1101	102-6106	1-3/8 - 6 Spline



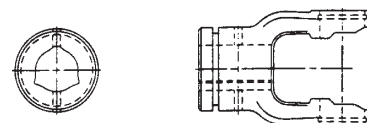
**Tractor Yokes: Twist Lock Quick Disconnect**

PART NO.	WEASLER NO.	BORE
343-1146	- - -	1 3/8 - 6 Spline



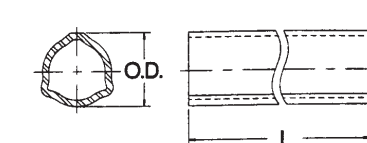
**Inner Profile Yoke**

PART NO.	WEASLER NO.	BORE	
		mm	inches
343-1301	300-6126	26	1



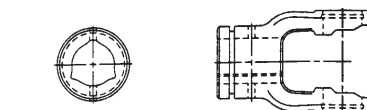
**Inner Profile Tube - 59" Lengths (L)**

PART NO.	WEASLER NO.	O.D.		WALL THICKNESS	
		mm	inches	mm	inches
343-1401	400-6126	26	1-1/32	3.5	1/8



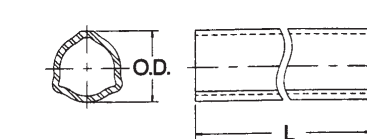
**Outer Profile Yoke**

PART NO.	WEASLER NO.	BORE	
		mm	inches
343-1701	400-6126	32.5	1-9/32



**Outer Profile Tube - 59" Lengths (L)**

PART NO.	WEASLER NO.	O.D.		WALL THICKNESS	
		mm	inches	mm	inches
343-1601	600-6133	32.5	1-9/32	2.6	3/32





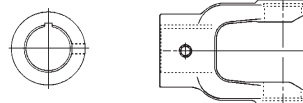
**POWER TAKE OFF YOKES**



**BONDIOLI & PAVESI 1 SERIES METRIC**

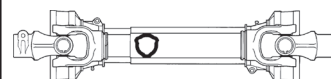
**Implement Yoke (Round)**

PART NO	BORE	KEYWAY WIDTH LOC.
343-1800 .....	1" .....	1/4" .....
343-1801 .....	1-1/8" .....	5/16" .....
343-1802 .....	1-1/4" .....	1/2" .....



**Complete Drivelines**

PART	LENGTH	TRACTOR	IMPLEMENT
343-100 .....	51.4" .....	1 3/8-6 Spline,QD .....	1 1/4 Rd .....
343-103 .....	27" .....	1 3/8-6 Spline,QD .....	1 3/8-6 Spline,QD....

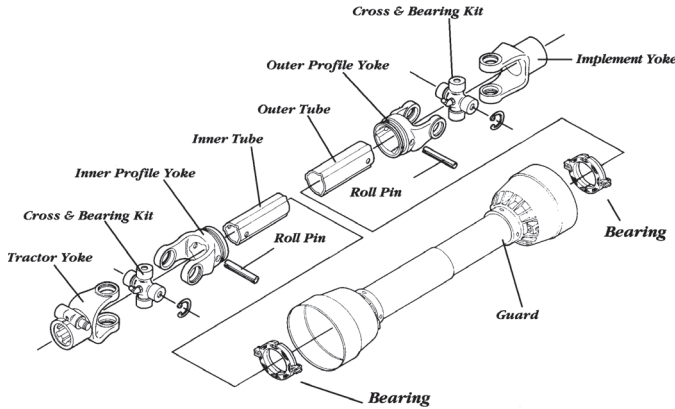




**POWER TAKE OFF YOKES**

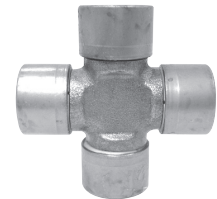


**BONDIOLI & PAVESI 2 SERIES METRIC**



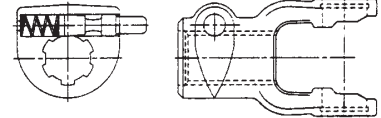
**Cross & Bearing Kit: Outside Lock-Up**

PART NO.	WEASLER NO.	BEARING DIAMETER mm	OVERALL LENGTH inches
343-1209	200-8261	24	61



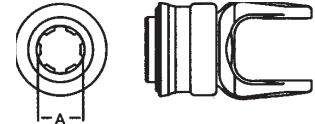
**Tractor Yokes: Pin Type Quick Disconnect**

PART NO.	WEASLER NO.	BORE
343-1111	102-8206	1-3/8 - 6 Spline



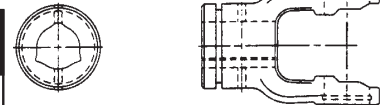
**Tractor Yokes: Twist Lock Quick Disconnect**

PART NO.	WEASLER NO.	BORE
343-1131	101-8206	1 3/8 - 6 Spline



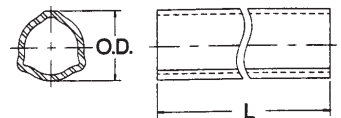
**Inner Profile Yoke**

PART NO.	WEASLER NO.	BORE mm
343-1302	300-6229	29



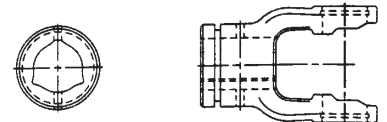
**Inner Profile Tube - 59" Lengths (L)**

PART NO.	WEASLER NO.	O.D. mm	WALL THICKNESS mm
343-1402	400-6229	29	3.4



**Outer Profile Yoke**

PART NO.	WEASLER NO.	BORE mm
343-1702	700-6236	36





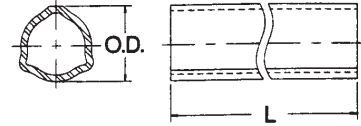
**POWER TAKE OFF YOKES**



**BONDOLI & PAVESI 2 SERIES METRIC**

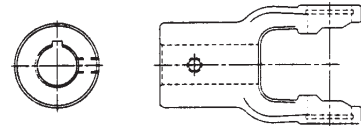
**Outer Profile Tube - 59" Lengths (L)**

PART NO.	WEASLER NO.	O.D.		WALL THICKNESS	
		mm	inches	mm	inches
<b>343-1602</b>	600-6236	36	1-27/64	3.4	1/8



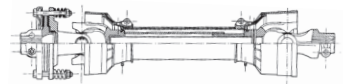
**Implement Yoke**

PART NO.	WEASLER NO.	BORE		Keyway
		mm	inches	
<b>343-1809</b>	800-8208	25.4	1	1/4"
<b>343-1810</b>	800-8210	31.75	1-1/4	1/4"



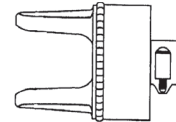
**Complete Drivelines**

PART NO.	LENGTH	TRACTOR	IMPLEMENT
<b>343-110</b>	32.5"	1 3/8-6 Spline, QD	1 3/8-6 Spl, Clutch
<b>343-111</b>	57"	1 3/8-6 Spline, QD	1 3/8-6 Spl, QD-OR Clutch



**Q.D. Over-Running Clutch Yoke**

PART NO.	BORE
<b>343-2002</b>	1 3/8 6 Spline



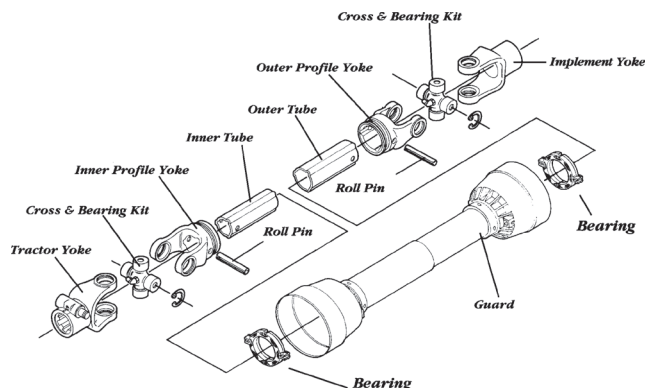
Elongated  
343-1914 ..... Inner Cone ..... \$43.69



**POWER TAKE OFF YOKES**



**BONDIOLI & PAVESI 3 SERIES METRIC**



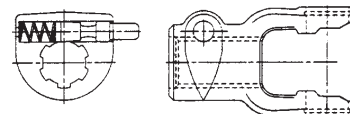
**Cross & Bearing Kit: Outside Lock-Up**

PART NO.	WEASLER NO.	BEARING DIAMETER		OVERALL LENGTH	
		mm	inches	mm	inches
343-1210	200-8370	27	1-1/16	70	2-49/64



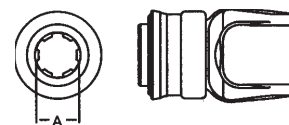
**Tractor Yokes: Pin Type Quick Disconnect**

PART NO.	WEASLER NO.	BORE
343-1113	102-8306	1-3/8 - 6 Spline ...



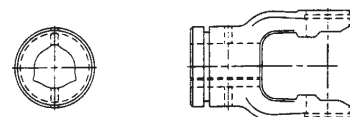
**Tractor Yokes: Twist Lock Quick Disconnect**

PART NO.	WEASLER NO.	BORE
343-1132	- - -	1-3/8 - 6 Spline ....



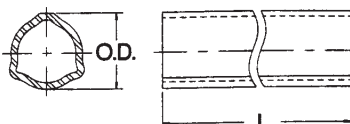
**Inner Profile Yoke**

PART NO.	WEASLER NO.	BORE
343-1303	300-6336	36 ..... 1-27/64



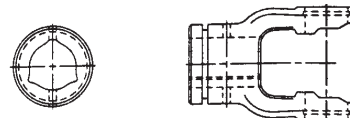
**Inner Profile Tube - 59" Lengths (L)**

PART NO.	WEASLER NO.	O.D.	WALL THICKNESS
343-1602	400-6336	36 ..... 1-27/64	3.4 ..... 1/8



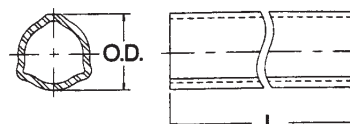
**Outer Profile Yoke**

PART NO.	WEASLER NO.	BORE
343-1703	700-6343	43.5 ..... 1-45/64



**Outer Profile Tube - 59" Lengths (L)**

PART NO.	WEASLER NO.	O.D.	WALL THICKNESS
343-1603	600-6343	43.5 ..... 1-45/64	3.0 ..... 1/8





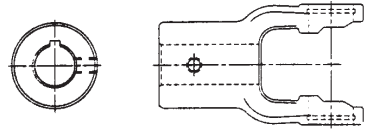
**POWER TAKE OFF YOKES**



**BONDOLI & PAVESI 3 SERIES METRIC**

**Implement Yoke & Shearpin**

PART NO.	WEASLER	BORE		KEYWAY
	NO.	mm	inches	
343-1805	.....	31.75	1-1/4	1/4"
343-1815	800-8311	34.92	1-3/8	5/16"
343-1856	802-8355	34.92	1-3/8	Shearpin..



**Complete Drivelines**

PART NO.	LENGTH	TRACTOR	IMPL.
343-120	40"	1 3/8 - 6 Spline	1 3/8 6 Spl..
343-124	51.4"	1 3/8 - 6 Spline	1 1/4 Rd.....



**SHIELDING AND COMPONENTS FOR SERIES 3**

**Outer Shield Tubes**

MFG. NO.	LENGTH
343-1938	676 mm 27"
343-1939	1026 mm 41"

66.5 mm (2-5/8") DIA x 2.2 mm (3/32") Wall



**Inner Shield Tubes**

MFG. NO.	LENGTH
343-1941	526 mm 21"
343-1942	676 mm 27"
343-1943	1026 mm 41"

61 mm (2-13/32") DIA x 2.2 mm (3/32") Wall




**BONDOLI & PAVESI**

Part #  
**083B04120L**

**Shield Kit Series 3**

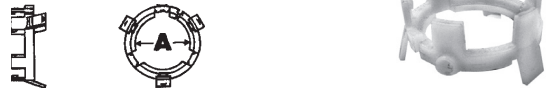
**Inner and Outer Cones**

Standard



INNER PART NO.	OUTER PART NO.
343-1944	343-1950

**Shield Bearings**



PART NO.	DESC	DIM "A"
343-1920	Outer	53.4 mm (2-7/64")
343-1956	Inner	46.4 mm (1-53/64")

**Chains**



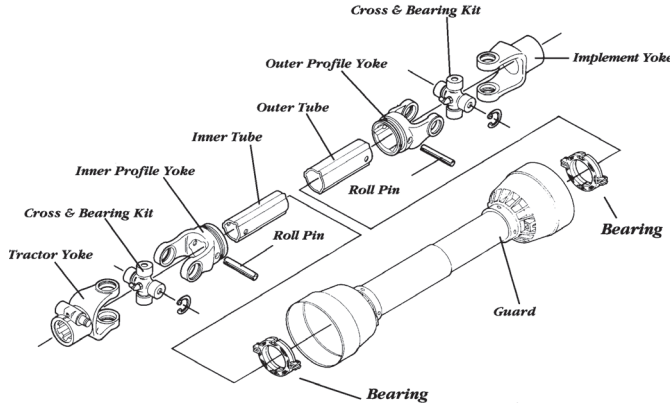
PART NO.	DESCRIPTION
343-1928	Chain



**POWER TAKE OFF YOKES**



**BONDOLI & PAVESI 4 SERIES METRIC**



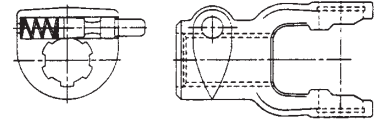
**Cross & Bearing Kit: Outside Lock-Up**

PART NO.	WEASLER NO.	BEARING DIAMETER		OVERALL LENGTH	
		mm	inches	mm	inches
343-1211	200-8474	27	1-1/16	74.5	2-15/16



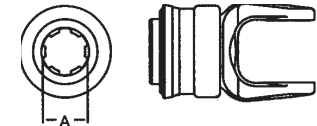
**Tractor Yokes: Pin Type Quick Disconnect**

PART NO.	WEASLER NO.	BORE
343-1115	102-8406	1-3/8 - 6 Spline
343-1117	102-8421	1 3/8 - 21 Spline



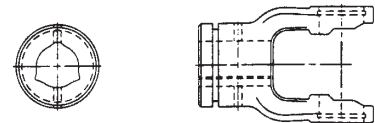
**Tractor Yokes: Twist Lock Quick Disconnect**

PART NO.	WEASLER NO.	BORE
343-1133	101-8406	1-3/8 - 6 Spline



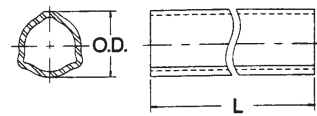
**Inner Profile Yoke**

PART NO.	WEASLER NO.	BORE
		mm inches
343-1304	300-6436	36 1-27/64



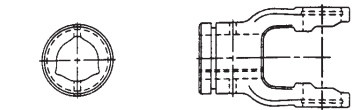
**Inner Profile Tube - 59" Lengths (L)**

PART NO.	WEASLER NO.	O.D.	WALL THICKNESS
		mm inches	mm inches
343-1404	400-6436	36 1-27/64	4.0 5/32



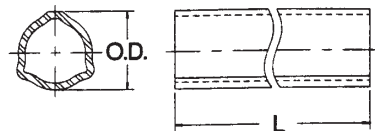
**Outer Profile Yoke**

PART NO.	WEASLER NO.	BORE
		mm inches
343-1704	700-6443	43.5 1-45/64



**Outer Profile Tube - 59" Lengths (L)**

PART NO.	WEASLER NO.	O.D.	WALL THICKNESS
		mm inches	mm inches
343-1603	600-6343	43.5 1-45/64	3.0 1/8







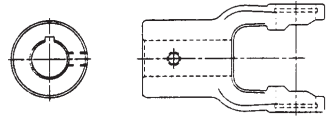
**POWER TAKE OFF YOKES**



**BONDIOLI & PAVESI 4 SERIES METRIC**

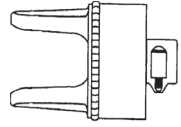
**Implement Yoke & Shearpin**

PART NO.	WEASLER NO.	BORE		KEYWAY
		mm	inches	
343-1806		25.4	1	1/4"
343-1818	800-8410	31.75	1 1/4	1/4"
343-1819	800-8411	34.92	1-3/8	3/8"
343-1857	802-8435	34.92	1-3/8	Shearpin
343-1808		38.1	1-1/2	3/8"



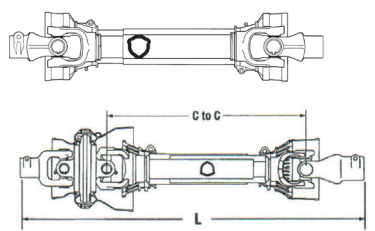
**Q.D. Over-Running Clutch Yoke**

PART NO.	BORE
343-2005	1 3/8 6 Spline



**Complete Drivelines**

PART NO.	LENGTH	TRACTOR	IMPL
343-130	32"	1 3/8 - 6 Spline	1 3/8 Rd.
343-131	37"	1 3/8 - 6 Spline	1 3/8 - 6 Spline
343-136	37"	1 3/8 - 6 Spline	1 3/8 6 Spl w/clutch
343-134	37.8"	1 3/8 - 6 Spline	1 3/8 Rd.
343-120	42.5"	1 3/8 - 6 Spline	1 3/8 Rd.
343-135	52"	1 3/8 - 6 Spline	1 3/8 Rd.
WU7654121UCR07096 . . . 4 . 62" . . . . . 1 3/8-6QDCV. . . . . 1 3/8-6 OR CLUTCH			



**SHIELDING AND COMPONENTS FOR SERIES 4**

**Outer Shield Tubes**

MFG. NO.	LENGTH
343-1938	676 mm 27"
343-1939	1026 mm 41"

66.5 mm (2-5/8") DIA x 2.2 mm (3/32") Wall



**Inner Shield Tubes**

MFG. NO.	LENGTH
343-1941	526 mm 21"
343-1942	676 mm 27"
343-1943	1026 mm 41"

61 mm (2-13/32") DIA x 2.2 mm (3/32") Wall



**Inner and Outer Cones**

Standard



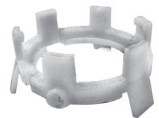
**Chain**



INNER PART NO.	OUTER PART NO.
343-1944	343-1950

**PART NO. 343-1928**

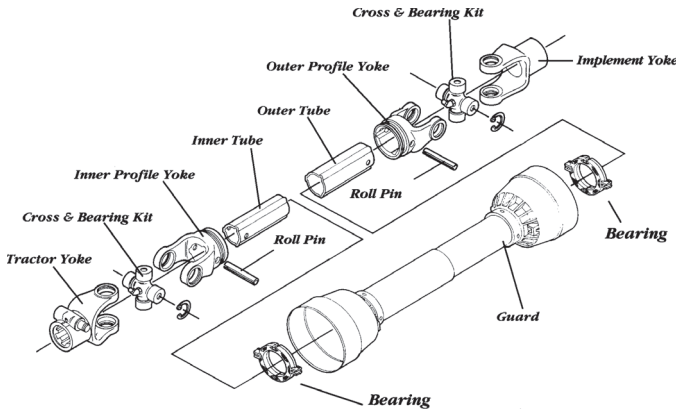
**Shield Bearings**



PART NO.	DESC	DIM "A"
343-1920	Outer	53.4 mm (2-7/64")
343-1956	Inner	46.4 mm (1-53/64")



**POWER TAKE OFF YOKES**  
**BONDIOLI & PAVESI 5 SERIES METRIC**



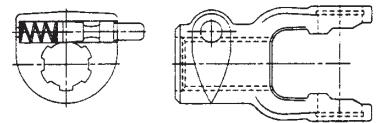
**Cross & Bearing Kit: Outside Lock-Up**



PART NO.	WEASLER NO.	BEARING DIAMETER		OVERALL LENGTH	
		mm	inches	mm	inches
343-1202	200-6580	30.2	1-3/16	80	3-5/32

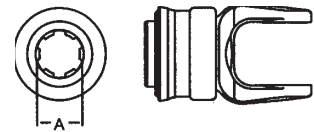
**Tractor Yokes: Pin Type Quick Disconnect**

PART NO.	WEASLER NO.	BORE
343-1103	102-6506	1-3/8 - 6 Spline
343-1104	102-6521	1-3/8 - 21 Spline
343-1106		1-3/4 - 20 Spline



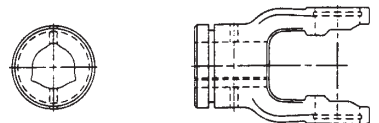
**Tractor Yokes: Twist Lock Quick Disconnect**

PART NO.	WEASLER NO.	BORE
343-1135		1-3/8 - 6 Spline
343-1136		1-3/8 - 21 Spline



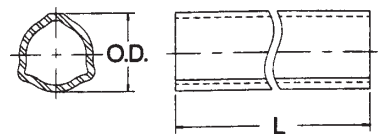
**Inner Profile Yoke**

PART NO.	WEASLER NO.	BORE
		mm inches
343-1305	300-6545	45 1-49/64



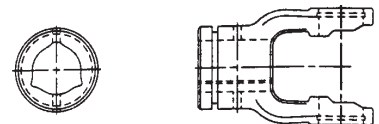
**Inner Profile Tube - 59" Lengths (L)**

PART NO.	WEASLER NO.	O.D.		WALL THICKNESS	
		mm	inches	mm	inches
343-1405	400-6545	45	1-49/64	4.0	5/32



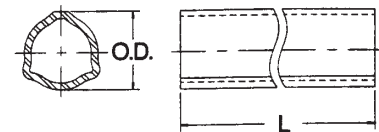
**Outer Profile Yoke**

PART NO.	WEASLER NO.	BORE
		mm inches
343-1705	700-6552	51.6 2-1/32



**Outer Profile Tube - 59" Lengths (L)**

PART NO.	WEASLER NO.	O.D.		WALL THICKNESS	
		mm	inches	mm	inches
343-1604	600-6552	51.6	2-1/32	3.0	1/8





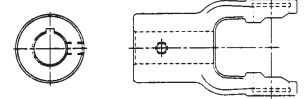
**POWER TAKE OFF YOKES**



**BONDOLI & PAVESI 5 SERIES METRIC**

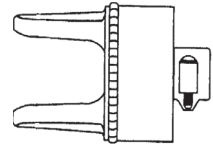
**Implement Yoke & Shearpin**

PART NO.	WEASLER NO.	BORE		KEYWAY
		mm	inches	
343-1803	800-6510	31.75	1-1/4	1/4"
343-1804	800-6511	34.92	1-3/8	5/16"
343-1811		34.92	1-3/8	1/2" Bolt
343-1812		38.1	1-1/2	3/8KW x 5/16 Bolt



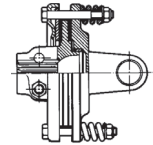
**Q.D. Over-Running Clutch Yoke**

PART NO.	BORE
343-2012	1 3/8 6 Spline



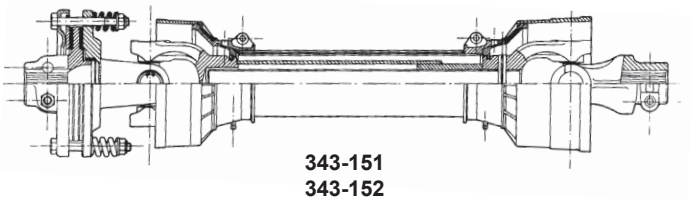
**Slip Clutch**

PART NO.	DESCRIPTION	BORE
343-801	Series 5 FD2 Slip Clutch	1 3/8 6 Spline

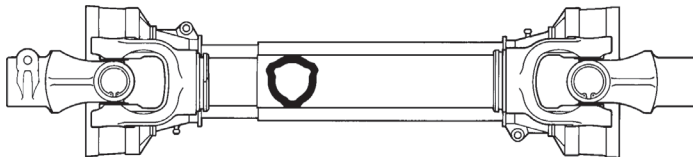


**Complete Drivelines**

PART NO.	LENGTH	TRACTOR	IMPL.
343-151	38"	1 3/8 - 6 Spline	1 3/8 6 Spl
343-154	38"	1 3/8 - 6 Spline	1 3/8 ORC
343-150	43"	1 3/8 - 6 Spline	1 3/8 6 Spl
343-152	45"	1 3/8 - 6 Spline	1 3/8 6 Spl
343-153	44"	1 3/8 - 6 Spline	1 3/8 Rd
343-155	53"	1 3/8 - 6 Spline	1 3/8 Rd



343-151  
343-152



343-150  
343-153  
343-154  
343-155

**BONDOLI & PAVESI**

083E05160

083E05160SC

**Shield Kit Series 5**

Part NO.  
083E05160.....  
083E05160SC (for PTO w/clutch)



SHIELDING & COMPONENTS  
FOR SERIES 5



**Outer Shield Tubes**

81.2 mm (3-13/64") DIA x 2.5 mm (7/64") Wall

MFG. NO.	LENGTH
343-1959	.....650 mm 26" .....
343-1960	.....1000 mm 40" .....



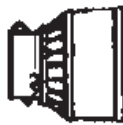
**Inner Shield Tubes**

75 mm (2-61/64") DIA x 2.5 mm (7/64") Wall

MFG. NO.	LENGTH
343-1963	.....650 mm 26" .....
343-1964	.....1000 mm 40" .....



**Inner and Outer Cones**



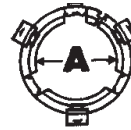
Standard

343-1965	..... Inner Cone.....
343-1972	..... Outer Cone .....



Clutching Types FF2 & FF4  
343-1969 ..... Inner Cone .....

**Shield Bearings**



PART NO.	DESC	DIM "A"
343-1912	..... Outer .....	62.4 mm (2-29/64").....
343-1911	..... Inner.....	53.4 mm (2-7/64").....

**Chains**



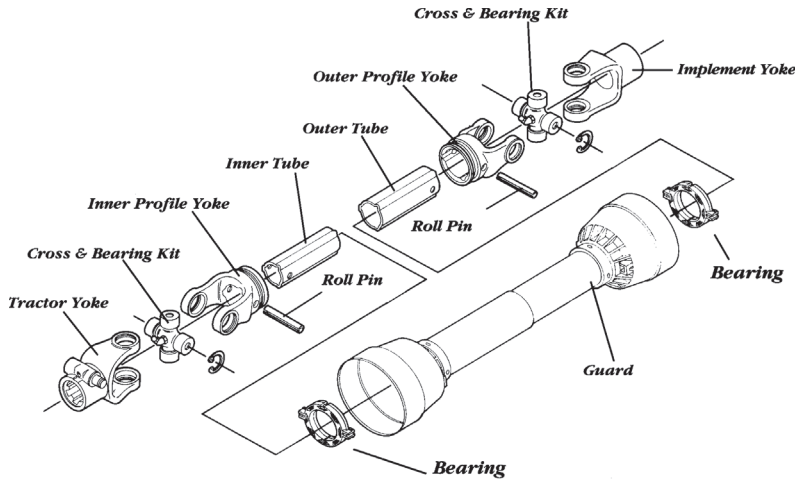
PART NO.	DESCRIPTION
343-1928	..... Chain.....



**POWER TAKE OFF YOKES**



**BONDOLI & PAVESI 6 SERIES METRIC**



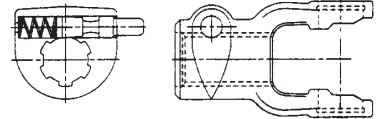
**Cross & Bearing Kit: Outside Lock-Up**

PART NO.	WEASLER NO.	BEARING DIAMETER		OVERALL LENGTH	
		mm	inches	mm	inches
343-1212	200-8692	30	1-3/16	92	3-5/8



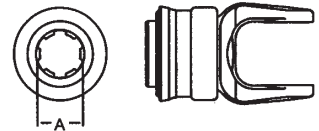
**Tractor Yokes: Pin Type Quick Disconnect**

PART NO.	WEASLER NO.	BORE
343-1116	102-8606	1-3/8 - 6 Spline
343-1118	102-8621	1-3/8 - 21 Spline
343-1130		1-3/4 - 20 Spline



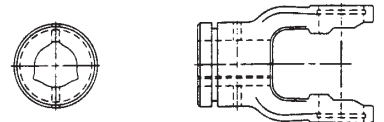
**Tractor Yokes: Twist Lock Quick Disconnect**

PART NO.	WEASLER NO.	BORE
343-1137		1-3/8 - 6 Spline
343-1138		1-3/8 - 21 Spline
343-1139		1-3/4 - 20 Spline



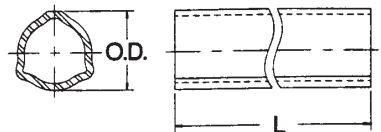
**Inner Profile Yoke**

PART NO.	WEASLER NO.	BORE	
		mm	inches
343-1306	300-6645	45	1-49/64



**Inner Profile Tube - 59" Lengths (L)**

PART NO.	WEASLER NO.	O.D.		WALL THICKNESS	
		mm	inches	mm	inches
343-1405	400-6545	45	1-49/64	4.0	5/32





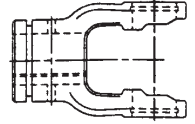
**POWER TAKE OFF YOKES**



**BONDOLI & PAVESI 6 SERIES METRIC**

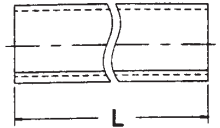
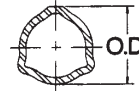
**Outer Profile Yoke**

PART NO.	WEASLER NO.	BORE mm	BORE inches
343-1706	700-6654	54	2-1/8



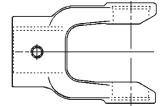
**Outer Profile Tube - 59" Lengths (L)**

PART NO.	WEASLER NO.	O.D. mm	O.D. inches	WALL THICKNESS mm	WALL THICKNESS inches
343-1605	400-6545	45	1-49/64	4.0	5/32



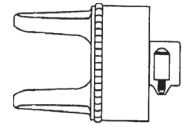
**Implement Yokes**

PART NO.	WEASLER NO.	BORE mm	BORE inches	KEYWAY
343-1813		31.75	1 1/4	1/4" KW x 5/16 Bolt
343-1816		34.92	1 3/8	5/16"
343-1817		44.4	1 3/4	3/8"



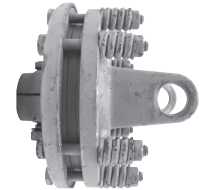
**Q.D. Over-Running Clutch Yoke**

PART NO.	BORE
343-2026	1 3/8 6 Spline



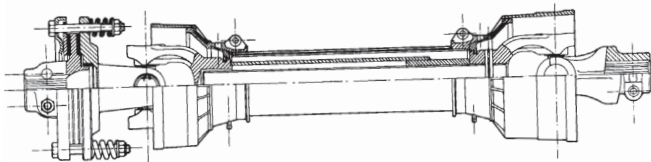
**Slip Clutches**

PART NO.	DESCRIPTION	BORE
343-802	Series 6 FD2 Slip Clutch	1-3/8 - 6 Spline
501-0652	Series 6 FD4 Slip Clutch	1 3/4 20 Spline



**Complete Drivelines**

PART NO.	LENGTH	TRACTOR	IMPL.
343-171	54.5"	1 3/8 6 Spline	1 3/8 6 Spl
343-173	61"	1 3/4 20 QD	1-3/4 20 Spl
343-174	61"	1 3/4 6 QD	1-3/4 20 Spl
343-175	60"	1 3/8 6 Spline	1 3/8 21 Spl
343-161	57"	1 3/8 6 QD	1-3/8 6 QD
343-156	52"	1 3/8 QD	1-3/8 RD



083E06160

083E06160SC

**Shield Kit Series 6**

Part NO.  
 083E06160.....  
 083E06160SC (for PTO w/clutch).



## SHIELDING & COMPONENTS FOR SERIES 6



### Outer Shield Tubes

MFG. NO.	LENGTH
343-1959	.....650 mm 26" .....
343-1960	.....1000 mm 40" .....

81.2 mm (3-13/64") DIA x 2.5 mm (7/64") Wall



### Inner Shield Tubes

MFG. NO.	LENGTH
343-1963	650 mm 26"
343-1964	.....1000 mm 40"

75 mm (2-61/64") DIA x 2.5 mm (7/64") Wall



### Inner and Outer Cones



Standard

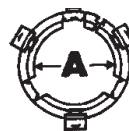
343-1965	..... Inner Cone .....
343-1972	..... Outer Cone .....



Clutching Types FF2 & FF4

343-1969	..... Inner Cone .....
----------	------------------------

### Shield Bearings



PART NO.	DESC	DIM "A"
343-1979	.... Outer .....	68.4 mm (2-29/64").....
343-1980	.... Inner.....	59.4 mm (2-7/64").....

### Chains



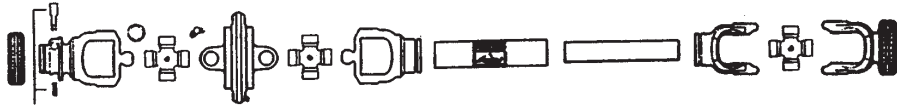
PART NO.	DESCRIPTION
343-1928	..... Chain .....



**POWER TAKE OFF YOKES**



# METRIC CONSTANT VELOCITY 80° DRIVELINE COMPONENTS 6 SERIES



### Cross & Bearing Kit for CV Body (Tractor Half)

PART NO.	BEARING DIAMETER		OVERALL LENGTH	
	mm	inches	mm	inches
412060012.....	30.2.....		100.....	



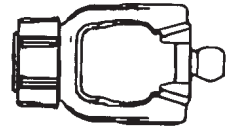
### Cross & Bearing Kit (Implement Half)

PART NO.	BEARING DIAMETER		OVERALL LENGTH	
	mm	inches	mm	inches
343-1212.....	30.....	13/16.....	92.....	3 5/8.....



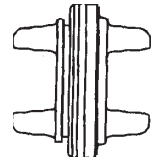
### Tractor Yoke: Twist Lock Quick Disconnect

PART NO.	BORE
343-1151.....	1 3/8 - 6 Spline.....



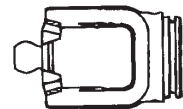
### CV Body

PART NO.	MANF NO.
501-0535.....	511060051.....



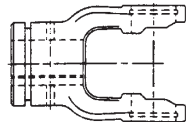
### CV Outer Tube Yoke

PART NO.	MANF NO.
501-0536.....	215066854.....



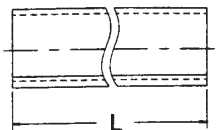
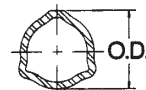
### Inner Profile Yoke

PART NO.	WEASLER NO.	BORE	
		mm	inches
343-1306.....	300-6645.....	45.....	1-49/64.....



### Outer Drive Tube - 59" Length

PART NO.	O.D.		WALL THICKNESS	
	mm	inches	mm	inches
343-1605.....	54.....	2 1/8.....	3.7.....	



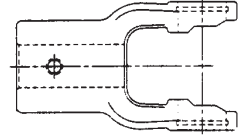




**BONDIOLI  
& PAVESI**



METRIC CONSTANT VELOCITY 80°  
DRIVELINE COMPONENT 6 SERIES



**Implement Yokes**

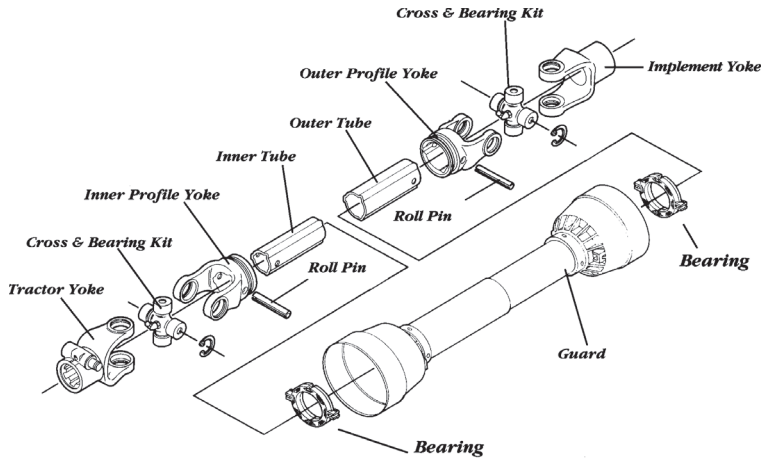
See Implement Yokes - 6 Series



**POWER TAKE OFF YOKES**



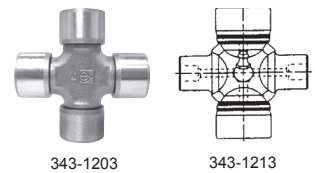
**BONDOLI & PAVESI 7 SERIES METRIC**



**Cross & Bearing Kit: Outside Lock-Up**

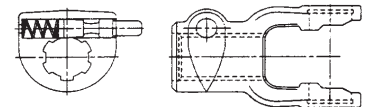
PART NO.	WEASLER NO.	BEARING DIAMETER	OVERALL LENGTH
		mm	inches
343-1203	200-6794	35	1-3/8
			94
			3-45/64
*343-1213	200-8706	30.2	1-3/16
			106.5
			4-3/16

\* Old Style



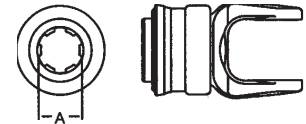
**Tractor Yokes: Pin Type Quick Disconnect**

PART NO.	WEASLER NO.	BORE
343-1126	102-6706	1-3/8 - 6 Spline
343-1124	102-6721	1-3/8 - 21 Spline
343-1125		1-3/4 - 20 Spline



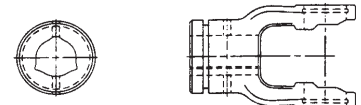
**Tractor Yokes: Twist Lock Quick Disconnect**

PART NO.	WEASLER NO.	BORE
343-1141		1-3/8 - 6 Spline
343-1142		1-3/4 - 20 Spline



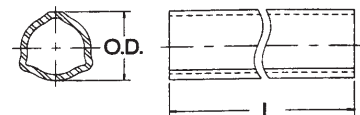
**Inner Profile Yoke**

PART NO.	WEASLER NO.	BORE
		mm
343-1315	300-6745	45



**Inner Profile Tube - 59" Lengths (L)**

PART NO.	WEASLER NO.	O.D.	WALL THICKNESS
		mm	inches
343-1410	400-6745	45	1-49/64
			5.5
			7/32



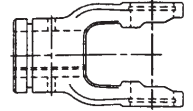


**POWER TAKE OFF YOKES**  
**BONDIOLI & PAVESI 7 SERIES METRIC**



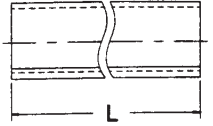
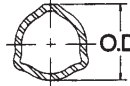
**Outer Profile Yoke**

PART NO.	WEASLER NO.	BORE mm	BORE inches
343-1715	700-6754	54	2-1/8



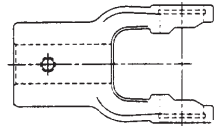
**Outer Profile Tube - 59" Lengths (L)**

PART NO.	WEASLER NO.	O.D. mm	O.D. inches	WALL THICKNESS mm	WALL THICKNESS inches
343-1605	600-6654	54	2-1/8	4	5/32



**Implement Yoke**

PART NO.	WEASLER NO.	BORE mm	BORE inches	KEYWAY
343-1825	800-6722	31.75	1-3/8	5/16"



**Outer Shield Tubes**

**SHIELDING & COMPONENTS FOR SERIES 7**

MFG. NO.	LENGTH
343-1959	650 mm 26"
343-1960	1000 mm 40"



81.2 mm (3-13/64") DIA x 2.5 mm (7/64") Wall

**Inner Shield Tubes**

MFG. NO.	LENGTH
343-1963	650 mm 26"
343-1964	1000 mm 40"



75 mm (2-61/64") DIA x 2.5 mm (7/64") Wall

**Inner and Outer Cones**



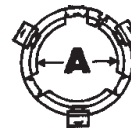
Standard

343-1965	Inner Cone
343-1972	Outer Cone



343-1969	Inner Cone
----------	------------

**Shield Bearings**



PART NO.	DESC	DIM "A"
343-1979	Outer	68.4 mm (2-29/64")
343-1980	Inner	59.4 mm (2-7/64")

**Chains**



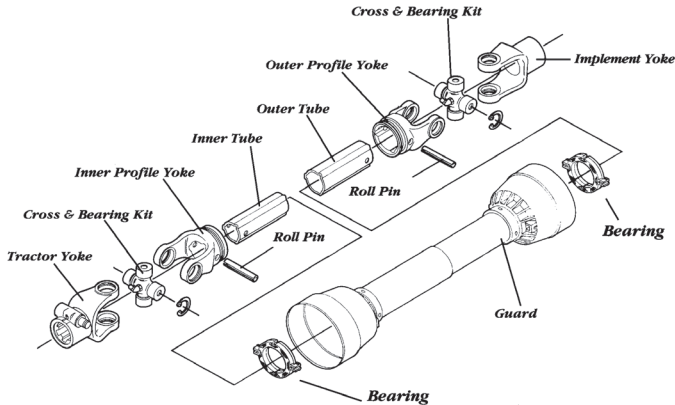
PART NO.	DESCRIPTION
343-1928	Chain



**POWER TAKE OFF YOKES**



# BONDIOLI & PAVESI 8 SERIES METRIC



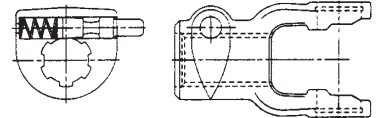
## Cross & Bearing Kit: Outside Lock-Up

PART NO.	WEASLER NO.	BEARING DIAMETER		OVERALL LENGTH	
		mm	inches	mm	inches
343-1214	200-6806	35	1-3/8	106.5	4-3/16



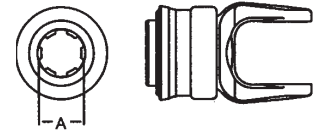
## Tractor Yokes: Pin Type Quick Disconnect

PART NO.	WEASLER NO.	BORE
343-1127	102-6806	1-3/8 - 6 Spline
343-1129	102-6821	1-3/8 - 21 Spline
343-1128	102-6820	1-3/4 - 20 Spline



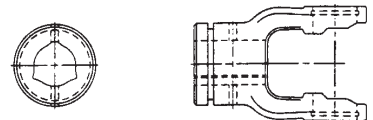
## Tractor Yokes: Twist Lock Quick Disconnect

PART NO.	WEASLER NO.	BORE
343-1143		1-3/8 - 6 Spline
343-1144		1-3/8 - 21 Spline
343-1145		1-3/4 - 20 Spline



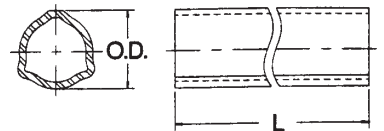
## Inner Profile Yoke

PART NO.	WEASLER NO.	BORE	
		mm	inches
343-1316	300-6854	54	2-1/8



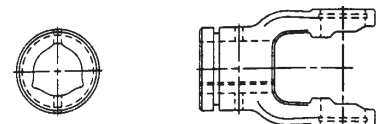
## Inner Profile Tube - 59" Lengths (L)

PART NO.	WEASLER NO.	O.D.		WALL THICKNESS	
		mm	inches	mm	inches
343-1605	400-6854	54	2-1/8	4.0	5/32



## Outer Profile Yoke

PART NO.	WEASLER NO.	BORE	
		mm	inches
343-1716	700-6863	63	2-31/64





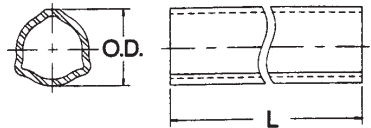
POWER TAKE OFF YOKES



## BONDIOLO & PAVESI 8 SERIES METRIC

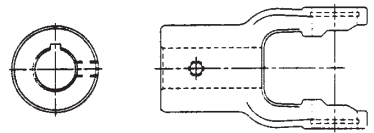
### Outer Profile Tube - 59" Lengths (L)

PART NO.	WEASLER NO.	O.D. mm	O.D. inches	WALL THICKNESS mm	WALL THICKNESS inches
343-1611...	600-6863 .....	63 .....	2-31/64 .....	4.0 .....	5/32 .....



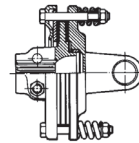
### Implement Yoke

PART NO.	WEASLER NO.	BORE mm	BORE inches	KEYWAY
343-1826 .....	800-6822 .....	34.92 .....	1-3/8 .....	5/16" .....
343-1827 .....	800-6824 .....	38.1 .....	1-1/2 .....	3/8" .....
343-1828 .....	800-6828 .....	44.45 .....	1-3/4 .....	3/8" .....



### Clutches

PART NO.	DESCRIPTION	BORE
343-803 .....	Series 8 FD4 Slip Clutch .....	1 3/8 6 Spline .....
501-0650 .....	Series 8 FF4 Slip Clutch.....	1 3/4 20 Spline ....



# www.modernagparts.com

Our Customer Service Representatives  
are available **M-F 8 am - 5:30 pm** and  
**Saturdays 8 am- 12 pm.**



**MODERN**  
AG PRODUCTS, LTD.



SHIELDING AND COMPONENTS  
FOR SERIES 8



**Outer Shield Tubes**

MFG. NO.	LENGTH
343-1987	.....602 mm 24" .....
343-1988	.....952 mm 37-1/2" ...



96 mm (3-25/32") DIA x 2.5 mm (7/64") Wall

**Inner Shield Tubes**

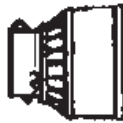
MFG. NO.	LENGTH
343-1991	.....602 mm 24" .....
343-1992	.....950 mm 37-1/2" ...



89.8 mm (3-17/32") DIA x 2.5 mm (7/64") Wall

**Inner and Outer Cones**

Standard



343-1998 ..... Outer Cone .....



Clutching Types FF1 & FF3

343-1996 ..... Inner Cone .....



Clutching Types FF2 & FF4

343-1996 ..... Inner Cone .....

**Shield Bearings**



PART NO.	DESC	DIM "A"
343-1926	.... Outer .....	80.4 mm (3-11/64") ....
343-2003	.... Inner .....	68.4 mm (2-11/16") ....

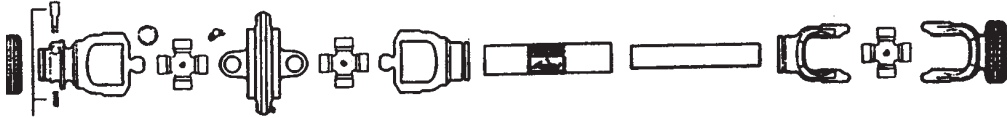
**Chains**



PART NO.	DESCRIPTION
343-1928	..... Chain .....



## METRIC CONSTANT VELOCITY 80° DRIVELINE COMPONENTS 8 SERIES



### Cross & Bearing Kit for CV Body (Tractor Half)

PART NO.	BEARING DIAMETER		OVERALL LENGTH	
	mm	inches	mm	inches
344-2204	35	1 3/8	106.5	4 3/16



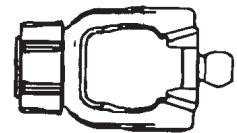
### Cross & Bearing Kit (Implement Half)

PART NO.	BEARING DIAMETER		OVERALL LENGTH	
	mm	inches	mm	inches
343-1214	35	1 3/8	106.5	4 3/16



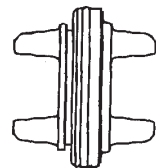
### Tractor Yoke: Twist Lock Quick Disconnect

PART NO.	BORE
343-1152	1 3/8 - 6 Spline



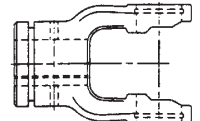
### CV Body

PART NO.	MANF NO.
343-3121	511080051



### Inner Profile Yoke

PART NO.	WEASLER NO.	BORE	
		mm	inches
343-1316	300-6854	54	2-1/8

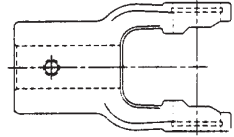




METRIC CONSTANT VELOCITY 80°  
DRIVELINE COMPONENTS 8 SERIES

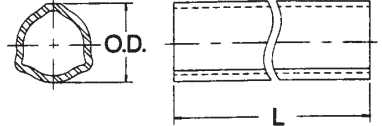


**Implement Yokes**  
See Implement Yokes - 8 Series



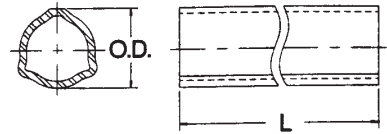
**Outer Drive Tube - 59" Length**

PART NO.	O.D.		WALL THICKNESS	
	mm	inches	mm	inches
125211500	63		3.7	



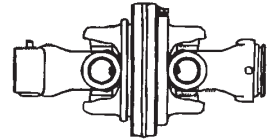
**Inner Drive Tube - 59" Length**

PART NO.	O.D.		WALL THICKNESS	
	mm	inches	mm	inches
245691500	54.6		4.3	

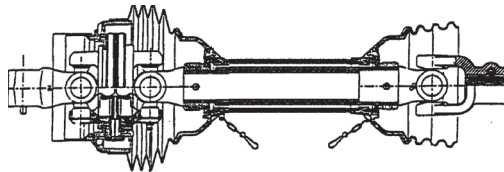


**Complete Head Assembly Less Shield**

PART NO.	MANF NO.
344-3103	7G58049T07



**COMPLETE CV DRIVELINE**



**For 15' Batwing Cutters Running 540 RPM PTO**

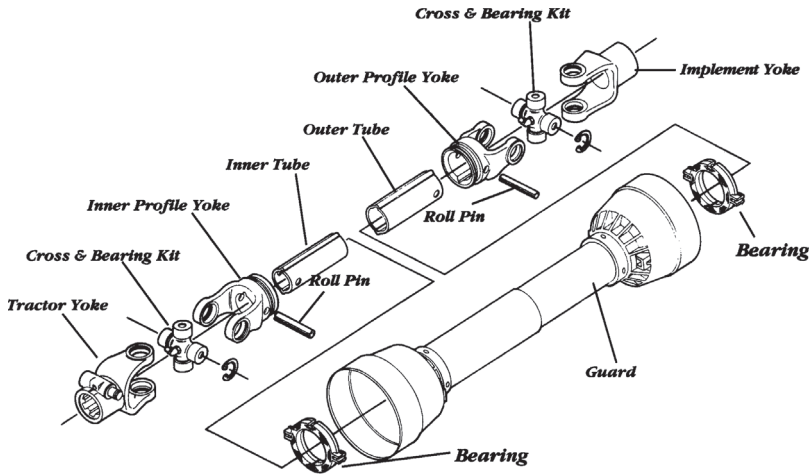
PART NO.	OVERALL LENGTH	TRACTOR	IMPLEMENT
343-2006		517088001	\$85.3





# POWER TAKE OFF YOKES

## WALTERSCHEID 2100 SERIES METRIC



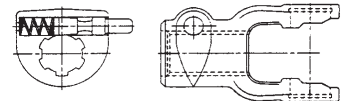
### Cross & Bearing Kit: Outside Lock-Up

PART NO.	WEASLER NO.	BEARING DIAMETER		OVERALL LENGTH	
		mm	inches	mm	inches
343-1205	200-7155	22	7/8	55	2-11/64



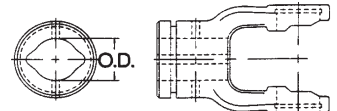
### Tractor Yokes: Pin Type Quick Disconnect

PART NO.	WEASLER NO.	BORE
343-1105	102-7106	1-3/8 - 6 Spline



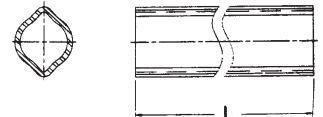
### Inner Profile Yoke

PART NO.	WEASLER NO.	BORE		OOA
		mm	inches	
343-1317		23.5	S/B 1-5/16	OOA
343-1307	300-7123	23.5	59/64	



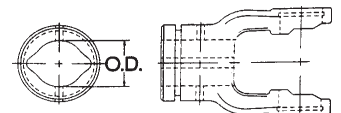
### Inner Profile Tube - 59" Lengths (L)

PART NO.	WEASLER NO.	O.D.		WALL THICKNESS	
		mm	inches	mm	inches
343-1406	400-7123	23.5	59/64	4.0	5/32



### Outer Profile Yoke

PART NO.	WEASLER NO.	BORE		OOA
		mm	inches	
343-1717		30	1-3/16	OOA
343-1707	700-7130	30	1-3/16	





## POWER TAKE OFF YOKES

### WALTERSCHEID 2100 SERIES METRIC

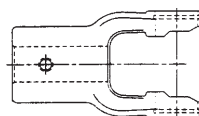
#### Outer Profile Tube - 59" Lengths (L)

PART NO.	WEASLER NO.	O.D.		WALL THICKNESS	
		mm	inches	mm	inches
343-1606	600-7130	30	1-3/16	2.8	3/32



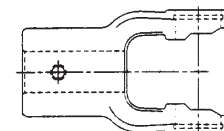
#### Shear Pin Yoke

PART NO.	WEASLER NO.	BORE	
		mm	inches
343-1820		25.4	1
343-1854	802-7110	31.75	1-1/4



#### Implement Yoke

PART NO.	BORE	
	mm	inches
343-1821	25	63/64
343-1822	30	1-3/16



[www.moderagnparts.com](http://www.moderagnparts.com)

**QUALITY & MODERN**

**MODERN**  
AG PRODUCTS, LTD.



## POWER TAKE OFF YOKES

### SHIELDING AND COMPONENTS FOR SERIES 2100

70.5 mm (2-7/8") x 64.5 mm (2-9/16") DIA

#### Outer Shield Tubes

MFG. NO.	LENGTH
343-2008	1000 mm 40".....
343-2009	1500 mm 60".....



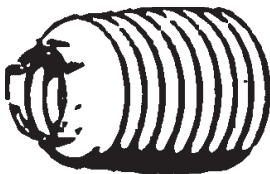
#### Inner Shield Tubes

MFG. NO.	LENGTH
343-2010	1000 mm 40".....
343-2011	1500 mm 60".....

61 mm 2-7/16") DIA



#### Inner and Outer Cones



PART NO.	DESCRIPTION
343-2015	Inner .....
343-2015	Outer .....

#### Shield Bearings



PART NO.	DESCRIPTION
343-2016	Inner .....
343-2016	Outer .....

#### Chains

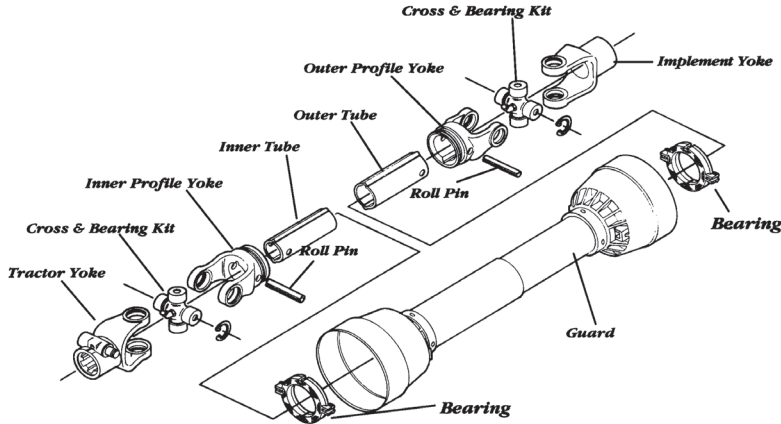


PART NO.	DESCRIPTION
343-2017	Standard Chain .....



**POWER TAKE OFF YOKES**

**WALTERSCHEID 2200 SERIES METRIC  
DRIVELINE COMPONENTS**



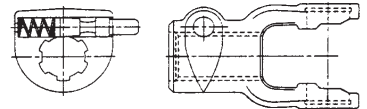
**Cross & Bearing Kit: Outside Lock-Up**

PART NO.	WEASLER NO.	BEARING DIAMETER		OVERALL LENGTH	
		mm	inches	mm	inches
343-1209	200-8261	24	61/64	61	2-13/32



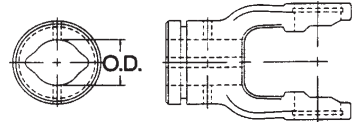
**Tractor Yokes: Pin Type Quick Disconnect**

PART NO.	WEASLER NO.	BORE
343-1111	102-8206	1-3/8" - 6 Spline



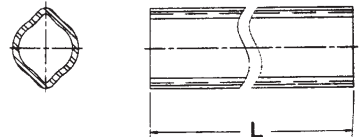
**Inner Profile Yoke**

PART NO.	WEASLER NO.	BORE	
		mm	inches
343-1308	300-7234	34.5	1-23/64



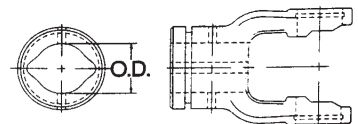
**Inner Profile Tube - 59" Lengths (L)**

PART NO.	WEASLER NO.	O.D.		WALL THICKNESS	
		mm	inches	mm	inches
343-1407	400-7234	34.5	1-23/64	4.0	5/32



**Outer Profile Yoke**

PART NO.	WEASLER NO.	BORE	
		mm	inches
343-1708	700-7241	41	1-39/64





**POWER TAKE OFF YOKES**

**WALTERSCHEID 2200 SERIES METRIC  
DRIVELINE COMPONENTS**

**Outer Profile Tube - 59" Lengths (L)**

PART NO.	WEASLER NO.	O.D.		WALL THICKNESS	
		mm	inches	mm	inches
<b>343-1607</b>	600-7241	41	1-39/64	3.0	1/8



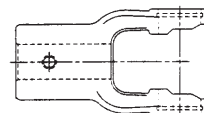
**Outer Profile Tube - 39" Lengths (L)**

PART NO.	WEASLER NO.	O.D.		WALL THICKNESS	
		mm	inches	mm	inches
<b>343-1613</b>		41	1-39/64	3.0	1/8



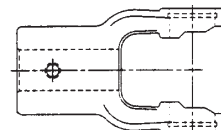
**Shear Pin Yoke**

PART NO.	BORE	
	mm	inches
<b>343-1820</b>	1	
<b>343-1854</b>	1-1/4	



**Implement Yoke**

PART NO.	WEASLER NO.	BORE		KEYWAY
		mm	inches	
<b>343-1809</b>	800-8208	25.4	1	1/4"
<b>343-1810</b>	800-8210	31.75	1-1/4	1/4"



**www.modernagparts.com**

We offer the largest selection of Driveline components anywhere. Call us toll-free today!

Our Customer Service Representatives are available **M-F 8 am - 5:30 pm** and **Saturdays 8 am- 12 pm.**



**MODERN**  
AG PRODUCTS, LTD.

## SHIELDING AND COMPONENTS FOR SERIES 2200

70.5 mm (2-7/8") x 64.5 mm (2-9/16") DIA

### Outer Shield Tubes

MFG. NO.	LENGTH
343-2008	.....1000 mm 40".....
343-2009	.....1500 mm 60".....



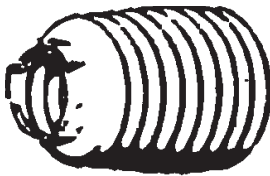
### Inner Shield Tubes

MFG. NO.	LENGTH
343-2010	.....1000 mm 40".....
343-2011	.....1500 mm 60".....

61 mm 2-7/16") DIA



### Inner and Outer Cones



PART NO.	DESCRIPTION
343-2015	..... Inner .....
343-2015	..... Outer .....

### Shield Bearings



PART NO.	DESCRIPTION
343-2016	..... Inner .....
343-2016	..... Outer .....

### Chains

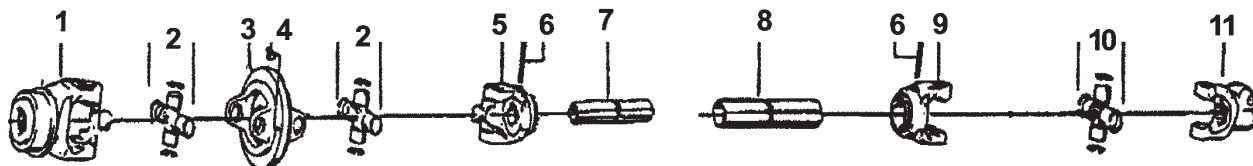


PART NO.	DESCRIPTION
343-2017	..... Standard Chain .....



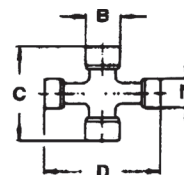
## POWER TAKE OFF YOKES

### METRIC CONSTANT VELOCITY 80° DRIVELINE COMPONENTS 2280 SERIES



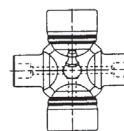
#### Cross & Bearing Kit for CV Body (Tractor Half)

PART NO.	C mm	B mm	D mm	N mm
344-2201	61	34	76	22



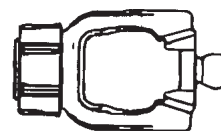
#### Cross & Bearing Kit (Implement Half)

PART NO.	BEARING DIAMETER		OVERALL LENGTH	
	mm	inches	mm	inches
343-1209	24	61/64	61	2-13/32



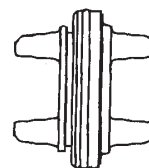
#### Tractor Yoke: Twist Lock Quick Disconnect

PART NO.	BORE
343-1154	1 3/8 - 6 Spline



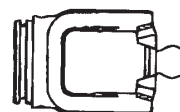
#### CV Body

PART NO.	MANF NO.
343-3122	384515



#### CV Inner Profile Yoke

PART NO.	MANF NO.
343-1320	366885





**POWER TAKE OFF YOKES**

**METRIC CONSTANT VELOCITY 80°  
DRIVELINE COMPONENTS 2280 SERIES**

**Outer Profile Tube - 59" Lengths (L)**

PART NO.	O.D.		WALL THICKNESS	
	mm	inches	mm	inches
343-1607	41	1-39/64	3.0	1/8



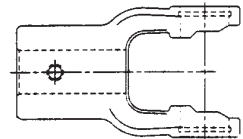
**Inner Profile Tube - 59" Lengths (L)**

PART NO.	O.D.		WALL THICKNESS	
	mm	inches	mm	inches
343-1407	34.5	1-11/32	4	5/32

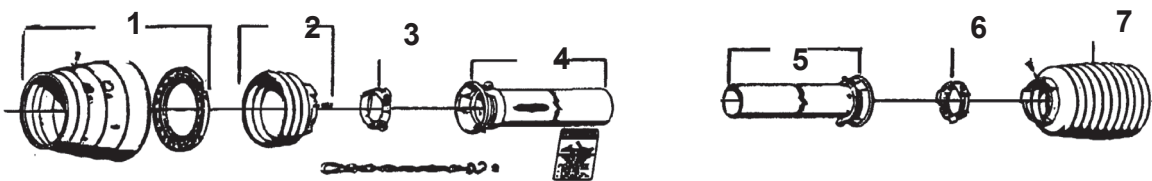


**Implement Yokes**

See Implement Yokes - 2200 Series



**METRIC CONSTANT VELOCITY  
SHIELDING 2280 SERIES**

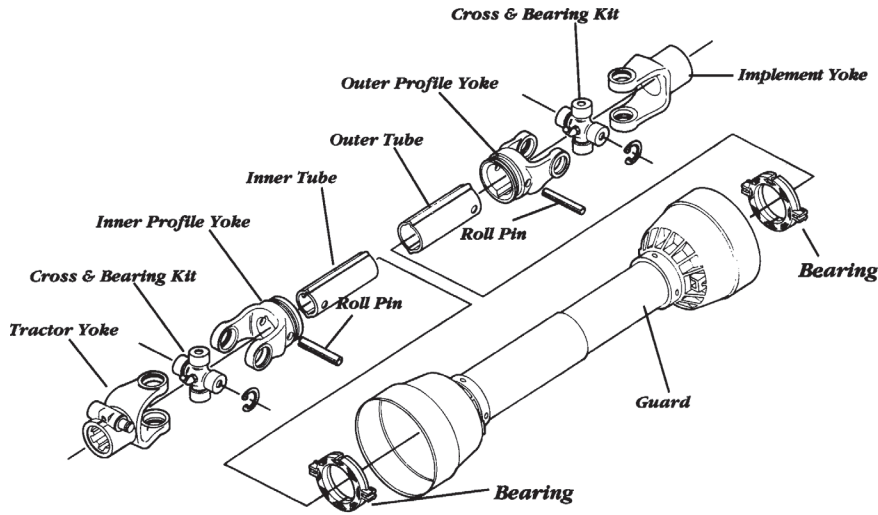


PART NO.	ITEM NO.	DESCRIPTION
343-2025	1	Cone & Bearing Assembly
343-2030	2	Rib Cone (3 Ribs)
343-2016	3	Shield Bearing
343-2027	4	Outer Shield Tube 1000 mm (40")
343-2028	5	Inner Shield Tube 1000 mm (40")
343-2016	6	Shield Bearing
343-2029	7	Standard Guard Cone 05 (10 Ribs)
343-2015	7	Shield Cone 10 Ribs SC15





**POWER TAKE OFF YOKES**  
**660/I SERIES METRIC**



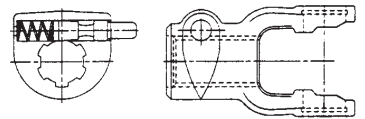
**Cross & Bearing Kit: Outside Lock-Up**

PART NO.	WEASLER NO.	BEARING DIAMETER		OVERALL LENGTH	
		mm	inches	mm	inches
343-1210	200-8370	27	1-1/16	70	2-49/64



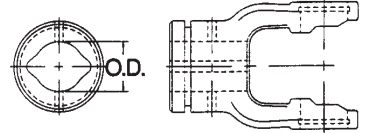
**Tractor Yokes: Pin Type Quick Disconnect**

PART NO.	WEASLER NO.	BORE
343-1113	102-8306	1-3/8 - 6 Spl



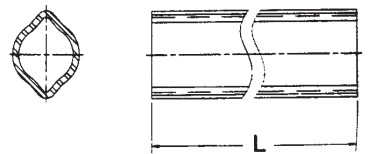
**Inner Profile Yoke**

PART NO.	WEASLER NO.	BORE	
		mm	inches
343-1309	300-7334	34.5	1-23/64



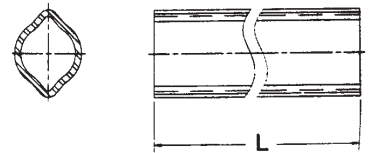
**Inner Profile Tube - 59" Lengths (L)**

PART NO.	WEASLER NO.	O.D.		WALL THICKNESS	
		mm	inches	mm	inches
343-1407	400-7234	34.5	1-23/64	4.0	5/32



**Outer Profile Tube - 59" Lengths (L)**

PART NO.	WEASLER NO.	O.D.		WALL THICKNESS	
		mm	inches	mm	inches
343-1607	600-7241	41	1-39/64	3.0	1/8



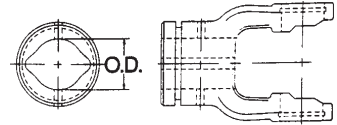
**MODERN**  
AG PRODUCTS, LTD.



**POWER TAKE OFF YOKES**  
660/I SERIES METRIC

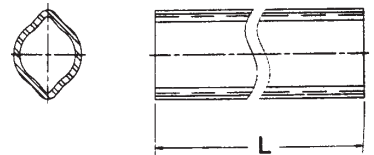
**Outer Profile Yoke**

PART NO.	WEASLER NO.	BORE mm	BORE inches
343-1709	700-7341	41	1-39/64



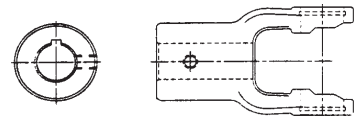
**Outer Profile Tube - 39" Lengths (L)**

PART NO.	WEASLER NO.	O.D. mm	O.D. inches	WALL THICKNESS mm	WALL THICKNESS inches
343-1613	41	1-39/64	3.0	1/8	



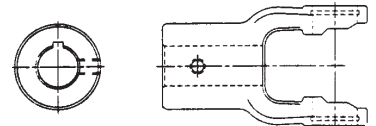
**Shear Pin Yoke**

PART NO.	BORE mm	BORE inches
343-1856	35	1-3/8



**Implement Yoke**

PART NO.	WEASLER NO.	BORE mm	BORE inches	KEYWAY
343-1814	800-8310	31.75	1-1/4	1/4"
343-1815	800-8311	25.78	1-3/8	5/16"



**QUALITY & MODERN**

**MODERN**  
AG PRODUCTS, LTD.



**POWER TAKE OFF YOKES**

**660/II SERIES METRIC**

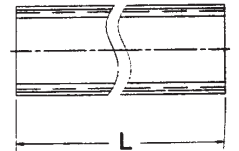
**Cross & Bearing Kit: Inside Lock-Up**

PART NO.	WEASLER NO.	BEARING DIAMETER		OVERALL LENGTH	
		mm	inches	mm	inches
343-1207	200-7890	34	1-11/32	90	3-35/64



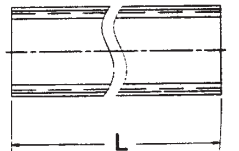
**Inner Profile Tube - 59" Lengths (L)**

PART NO.	WEASLER NO.	O.D.		WALL THICKNESS	
		mm	inches	mm	inches
343-1408	400-7539	39.5	1-9/16	4.5	3/16



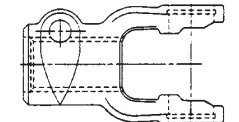
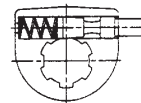
**Outer Profile Tube - 59" Lengths (L)**

PART NO.	WEASLER NO.	O.D.		WALL THICKNESS	
		mm	inches	mm	inches
343-1608	600-7548	48	1-57/64	4.0	5/32



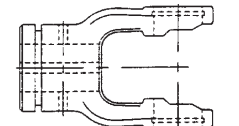
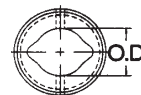
**Tractor Yokes: Pin Type Quick Disconnect**

PART NO.	WEASLER NO.	BORE
343-1147		1 3/8 - 6 Spline



**Inner Profile Yoke**

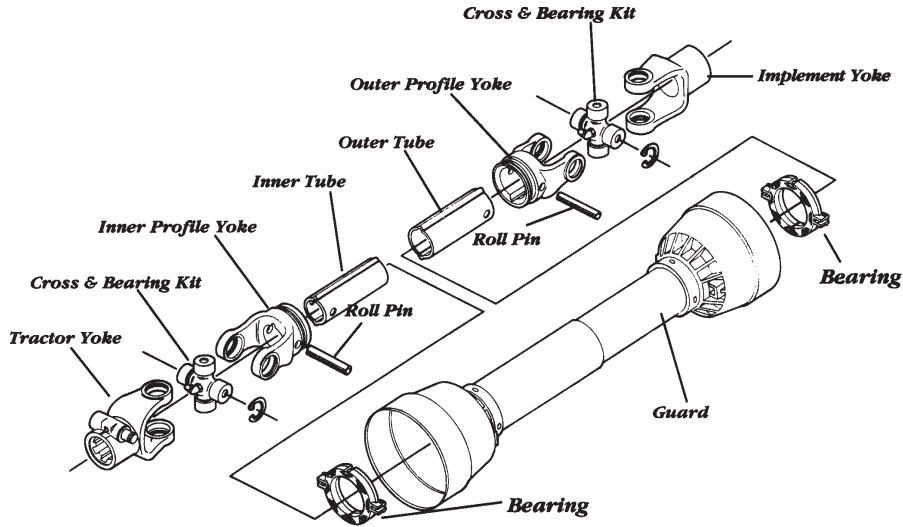
PART NO.	WEASLER NO.	BORE	
		mm	inches
343-1318		39.5	1 9/16





**POWER TAKE OFF YOKES**

**WALTERSCHEID 2300/210 SERIES METRIC**



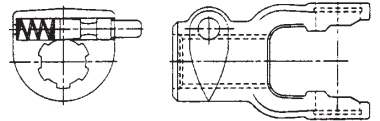
**Cross & Bearing Kit: Outside Lock-Up**



PART NO.	WEASLER NO.	BEARING DIAMETER		OVERALL LENGTH	
		mm	inches	mm	inches
343-1211	200-8474	27	1-1/16	74.5	2-15/16

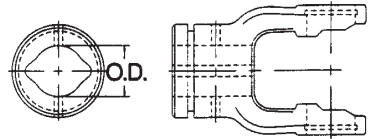
**Tractor Yokes: Pin Type Quick Disconnect**

PART NO.	WEASLER NO.	BORE
343-1115	102-8406	1-3/8" - 6 Spline
343-1117		1-3/8" - 21 Spline
343-1148		1-1/8" - 6 Spline



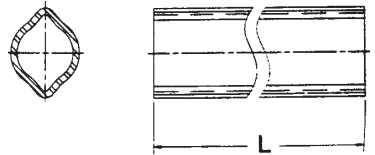
**Inner Profile Yoke**

PART NO.	WEASLER NO.	BORE
		mm inches
343-1310	300-7434	34.5 1-23/64
343-1319		39.5 1-9/16



**Inner Profile Tube - 59" Lengths (L)**

PART NO.	WEASLER NO.	O.D.	WALL THICKNESS
		mm inches	mm inches
343-1407	400-7234	34.5 1-23/64	4.0 5/32



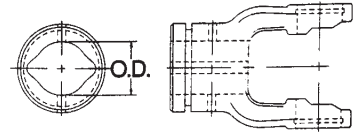


**POWER TAKE OFF YOKES**

**WALTERSCHEID 2300/210 SERIES METRIC**

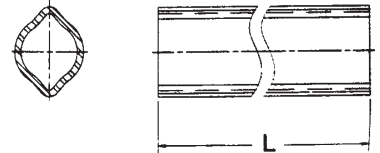
**Outer Profile Yoke**

PART NO.	WEASLER NO.	BORE mm	BORE inches
343-1710	700-7441	41	1-39/64
343-1718		48	1-15/16



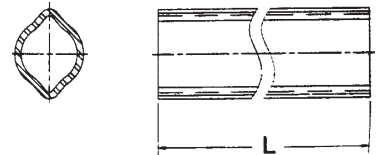
**Outer Profile Tube - 59" Lengths (L)**

PART NO.	WEASLER NO.	O.D. mm	O.D. inches	WALL THICKNESS mm	WALL THICKNESS inches
343-1607	600-7241	41	1-39/64	3.0	1/8



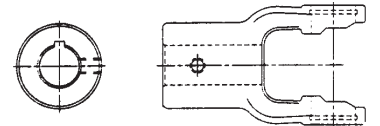
**Outer Profile Tube - 39" Lengths (L)**

PART NO.	WEASLER NO.	O.D. mm	O.D. inches	WALL THICKNESS mm	WALL THICKNESS inches
343-1613		41	1-39/64	3.0	1/8



**Implement Yoke & Shearpin**

PART NO.	WEASLER NO.	BORE mm	BORE inches	KEYWAY
343-1819	800-8411	34.92	1-3/8	5/16"
343-1857	802-8435	34.92	1-3/8	Shearpin



**www.modernagparts.com**

We offer the largest selection of Driveline components anywhere. Call us toll-free today!

Our Customer Service Representatives are available **M-F 8 am - 5:30 pm** and **Saturdays 8 am- 12 pm.**



**MODERN**  
AG PRODUCTS, LTD.

## SHIELDING AND COMPONENTS FOR SERIES 2300

70.5 mm (2-7/8") x 64.5 mm (2-9/16") DIA

### Outer Shield Tubes

MFG. NO.	LENGTH
343-2008	.....1000 mm 40".....
343-2018	.....1500 mm 60".....



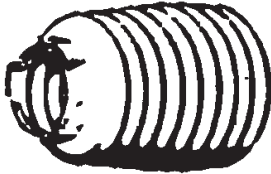
### Inner Shield Tubes

MFG. NO.	LENGTH
343-2010	.....1000 mm 40".....
343-2019	.....1500 mm 60".....

61 mm (2-7/16") DIA



### Inner and Outer Cones



PART NO.	DESCRIPTION
343-2015	..... Inner .....
343-2020*	..... Inner .....
343-2015	..... Outer .....
343-2020*	..... Outer .....

*\*Fits Both 2300 & 2400 Series  
(Uses 087276 Inner & Outer Bearings)*

### Shield Bearings



PART NO.	DESCRIPTION
343-2016	..... Inner .....
343-2016	..... Outer .....

### Chains

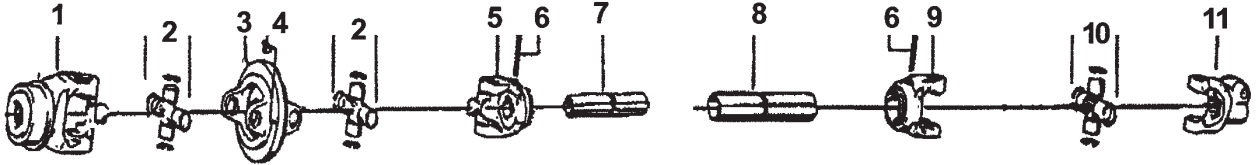


PART NO.	DESCRIPTION
343-2017	..... Standard Chain .....



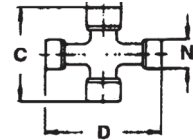
WALTERSCHEID 220/720 SERIES METRIC  
POWER TAKE OFF YOKES

METRIC CONSTANT VELOCITY 80°  
DRIVELINE COMPONENTS 2380 SERIES



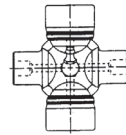
**Cross & Bearing Kit for CV Body (Tractor Half)**

PART NO.	C mm	B mm	D mm	N mm
344-2202	75	27	91	24



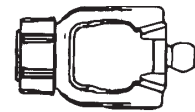
**Cross & Bearing Kit (Implement Half)**

PART NO.	BEARING DIAMETER mm	BEARING DIAMETER inches	OVERALL LENGTH mm	OVERALL LENGTH inches
343-1211	27	1-1/16	74.5	2-15/16



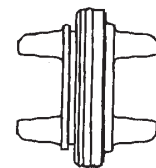
**Tractor Yoke: Twist Lock Quick Disconnect**

PART NO.	BORE
343-1158	1 3/8 - 6 Spline



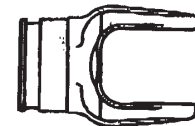
**CV Body**

PART NO.	MANF NO.
343-3123	384517



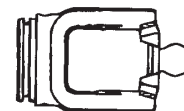
**Outer Profile Yoke**

PART NO.	BORE mm	BORE inches
343-1710	41	1-39/64
343-1718	48	1-15/16



**CV Inner Profile Yoke**

PART NO.	BORE mm	BORE inches
343-1321	34.5	1-23/64
343-1322	39.5	1-9/16





**POWER TAKE OFF YOKES**

**METRIC CONSTANT VELOCITY 80°  
DRIVELINE COMPONENTS 2380 SERIES**

**Outer Profile Tube - 59" Lengths (L)**

PART NO.	O.D.		WALL THICKNESS	
	mm	inches	mm	inches
343-1607	41	1-39/64	3.0	1/8



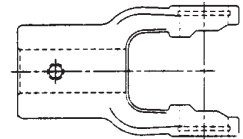
**Inner Profile Tube - 59" Lengths (L)**

PART NO.	O.D.		WALL THICKNESS	
	mm	inches	mm	inches
343-1407	34.5	1-11/32	4	5/32

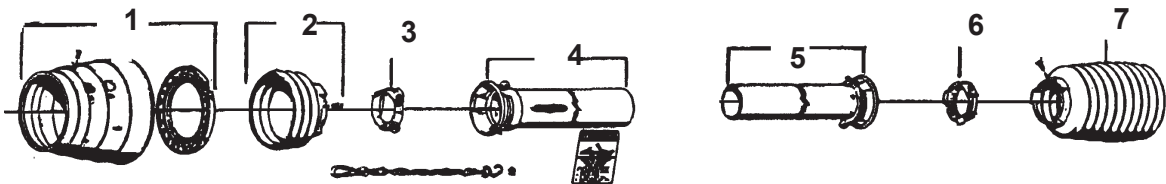


**Implement Yokes**

See Implement Yokes - 2300 Series



**WALTERSCHEID  
METRIC CONSTANT VELOCITY  
SHIELDING 2380 SERIES**

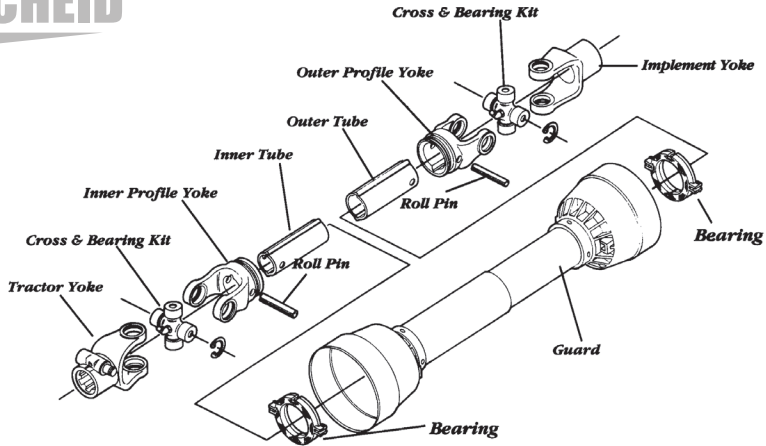


PART NO.	ITEM NO.	DESCRIPTION
343-2030	1	Cone & Bearing Assembly
343-2031	2	Rib Cone (3 Ribs)
343-2023	3	Shield Bearing
343-2008	4	Outer Shield Tube 1000 mm (40")
343-2010	5	Inner Shield Tube 1000 mm (40")
343-2023	3	Shield Bearing
343-2015	7	Shield Guard Cone (10 Ribs)



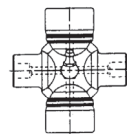
**POWER TAKE OFF YOKES**

**WALTERSCHEID 220/720 SERIES METRIC**



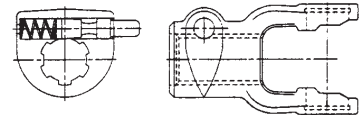
**Cross & Bearing Kit: Outside Lock-Up**

PART NO.	WEASLER NO.	BEARING DIAMETER		OVERALL LENGTH	
		mm	inches	mm	inches
343-1212	200-8692	30	1-3/16	92	3-5/8



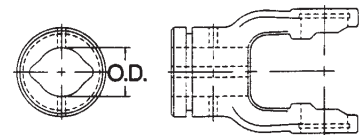
**Tractor Yokes: Pin Type Quick Disconnect**

PART NO.	WEASLER NO.	BORE
343-1116	102-8606	1-3/8" - 6 Spline
343-1118	102-8621	1-3/8" - 21 Spline



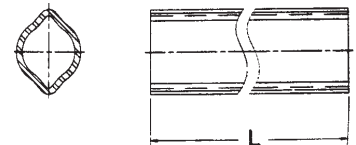
**Inner Profile Yoke**

PART NO.	WEASLER NO.	BORE	
		mm	inches
343-1311	300-7539	39.5	1-9/16



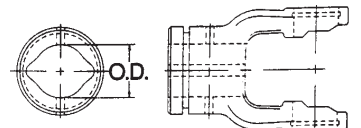
**Inner Profile Tube - 59" Lengths (L)**

PART NO.	WEASLER NO.	O.D.		WALL THICKNESS	
		mm	inches	mm	inches
343-1408	400-7539	39.5	1-9/16	4.5	3/16



**Outer Profile Yoke**

PART NO.	WEASLER NO.	BORE	
		mm	inches
343-1711	700-7548	48	1-57/64



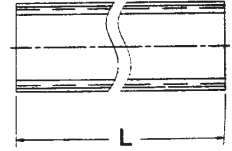


**POWER TAKE OFF YOKES**

**WALTERSCHEID 220/720 SERIES METRIC**

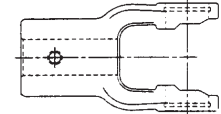
**Outer Profile Tube - 59" Lengths (L)**

PART NO.	WEASLER NO.	O.D.		WALL THICKNESS	
		mm	inches	mm	inches
343-1608	600-7548	48	1-57/64	4.0	5/32



**Shear Pin Yoke**

PART NO.	BORE	
	mm	inches
343-1842	35	1-3/8



**[www.moderagparts.com](http://www.moderagparts.com)**

We offer the largest selection of Driveline components anywhere. Call us toll-free today!

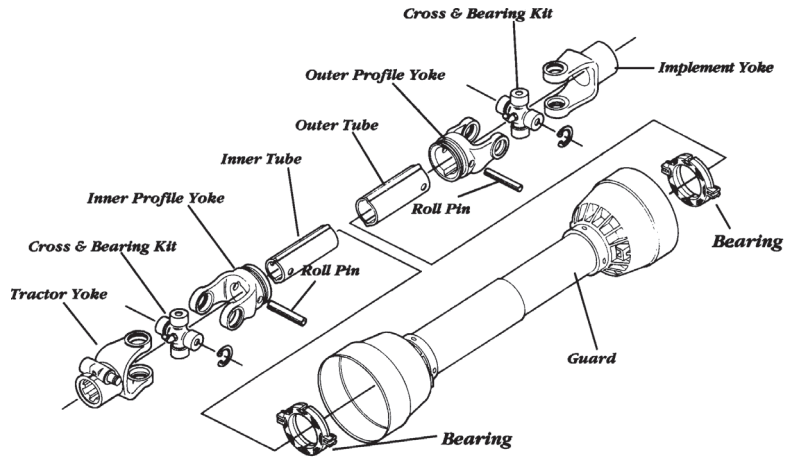
*Our Customer Service Representatives are available M-F 8 am - 5:30 pm and Saturdays 8 am- 12 pm.*



**MODERN**  
AG PRODUCTS, LTD.



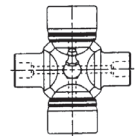
**POWER TAKE OFF YOKES**



**WALTERSCHEID 2400 SERIES METRIC**

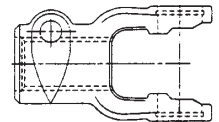
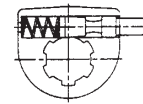
**Cross & Bearing Kit: Outside Lock-Up**

PART NO.	WEASLER NO.	BEARING DIAMETER		OVERALL LENGTH	
		mm	inches	mm	inches
343-1206	200-7676	32	1-17/64	76	3



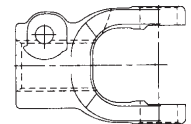
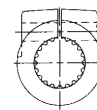
**Tractor Yokes: Pin Type Quick Disconnect**

PART NO.	WEASLER NO.	BORE
343-1107	102-7606	1-3/8" - 6 Spline
343-1157	102-7621	1 3/8 - 21 Spline
343-1150	102-7620	1 3/4 - 20 Spline



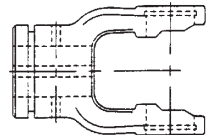
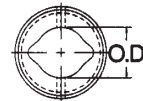
**Implement Yoke (Clamp)**

PART NO.	WEASLER NO.	BORE
343-1168		1-3/8" - 6 Spline
343-1170		1-3/4" - 20 Spline



**Inner Profile Yoke**

PART NO.	WEASLER NO.	BORE	
		mm	inches
343-1312	300-7639	39.5	1-9/16



**Inner Profile Tube - 59" Lengths (L)**

PART NO.	WEASLER NO.	O.D.		WALL THICKNESS	
		mm	inches	mm	inches
343-1408	400-7539	39.5	1-9/16	4.5	3/16

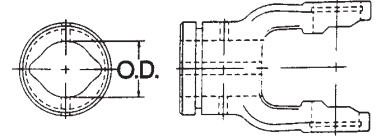


**POWER TAKE OFF YOKES**

**WALTERSCHEID 2400 SERIES METRIC**

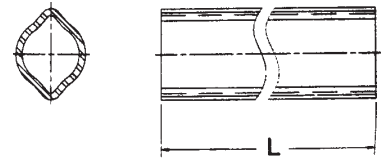
**Outer Profile Yoke**

PART NO.	WEASLER NO.	BORE mm	BORE inches
343-1712	700-7648	48	1-57/64



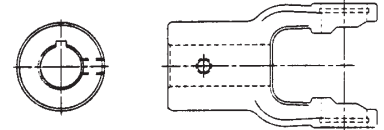
**Outer Profile Tube - 59" Lengths (L)**

PART NO.	WEASLER NO.	O.D. mm	O.D. inches	WALL THICKNESS mm	WALL THICKNESS inches
343-1608	600-7548	48	1-57/64	4.0	5/32



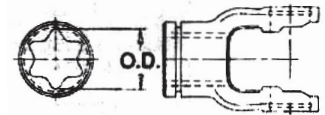
**Shear Pin Yoke**

PART NO.	WEASLER NO.	BORE mm	BORE inches
343-1855	802-7622	34.92	1-3/8



**Tube Yoke**

PART NO.	BORE mm	BORE inches
356905	inner 51.4	2-1/32
356906	outer 61	2-3/8



We offer the largest selection of Driveline components anywhere. Call us toll-free today!

*Our Customer Service Representatives are available M-F 8 am - 5:30 pm and Saturdays 8 am- 12 pm.*



**MODERN**  
AG PRODUCTS, LTD.

## SHIELDING AND COMPONENTS FOR SERIES 2400

83 mm (3-5/16") x 77 mm (3-1/16") DIA

### Outer Shield Tubes

MFG. NO.	LENGTH
343-2021	.....1000 mm 40".....
343-2018	.....1500 mm 60".....



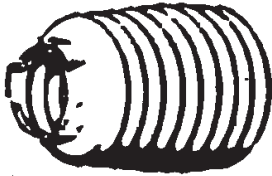
73 mm (2-15/16") DIA

### Inner Shield Tubes

MFG. NO.	LENGTH
343-2022	.....1000 mm 40".....
343-2019	.....1500 mm 60".....



### Inner and Outer Cones



PART NO.	DESCRIPTION
343-2020	..... Inner .....
343-2020	..... Outer .....

### Shield Bearings



PART NO.	DESCRIPTION
343-2023	..... Inner .....
343-2023	..... Outer .....

### Chains

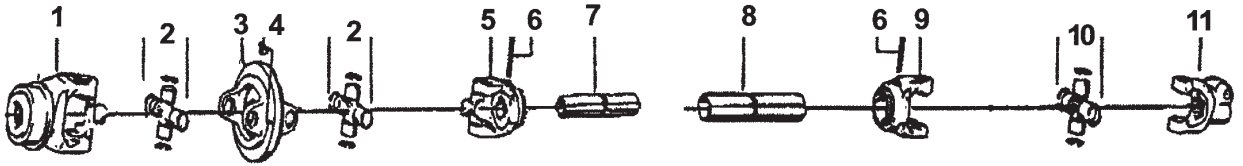


PART NO.	DESCRIPTION
343-2017	..... Standard Chain .....



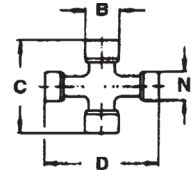
# WALTERSCHEID

## METRIC CONSTANT VELOCITY 80° DRIVELINE COMPONENTS 2480 SERIES



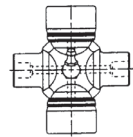
### Cross & Bearing Kit for CV Body (Tractor Half)

PART NO.	C mm	B mm	D mm	N mm
344-2203	76	32	94	27



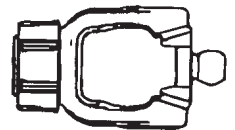
### Cross & Bearing Kit (Implement Half)

PART NO.	BEARING DIAMETER mm	OVERALL LENGTH mm	BEARING DIAMETER inches	OVERALL LENGTH inches
343-1206	32	76	1-17/64	3



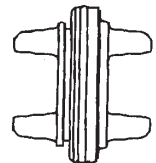
### Tractor Yoke: Twist Lock Quick Disconnect

PART NO.	BORE
343-1162	1 3/8 - 6 Spline
343-1163	1 3/8 - 21 Spline
343-1164	1 3/4 - 20 Spline



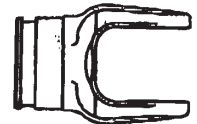
### CV Body

PART NO.	MANF NO.
343-3124	365722



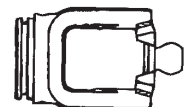
### Outer Profile Yoke

PART NO.	MANF NO.
343-1712	019519



### CV Inner Profile Yoke

PART NO.	MANF NO.
343-1323	341586





# WALTERSCHEID

## METRIC CONSTANT VELOCITY 80° DRIVELINE COMPONENTS 2480 SERIES

### Outer Profile Tube - 59" Lengths (L)

PART NO.	O.D.		WALL THICKNESS	
	mm	inches	mm	inches
343-1608	48	1-57/64	4	5/32



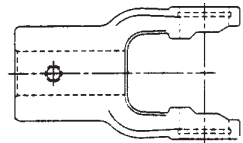
### Inner Profile Tube - 59" Lengths (L)

PART NO.	O.D.		WALL THICKNESS	
	mm	inches	mm	inches
343-1408	39.5	1-9/16	4.5	3/16



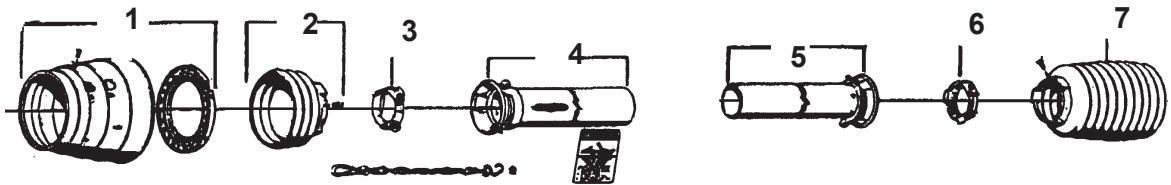
### Implement Yokes

See Implement Yokes - 2400 Series

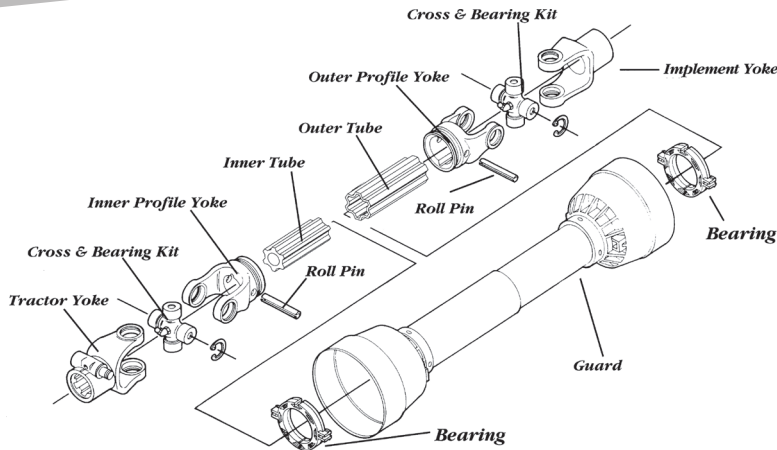


# WALTERSCHEID

## METRIC CONSTANT VELOCITY SHIELDING 2480 SERIES



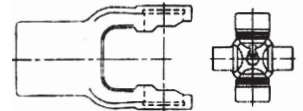
PART NO.	ITEM NO.	DESCRIPTION
343-2034	1	Cone & Bearing Assembly
343-2035	2	Rib Cone (3 Ribs)
343-2023	3	Shield Bearing
343-2021	4	Outer Shield Tube 1000 mm (40")
343-2022	5	Inner Shield Tube 1000 mm (40")
343-2023	3	Shield Bearing
343-2020	7	Standard Guard Cone



## WALTERSCHEID 2500 SERIES METRIC

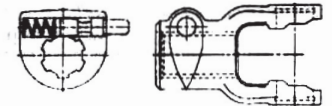
### Cross & Bearing Kit: Outside Lock-Up

PART NO.	WEASLER NO.	BEARING DIAMETER		OVERALL LENGTH	
		mm	inches	mm	inches
343-1208	200-7989	36	1-13/32	89	3-1/2



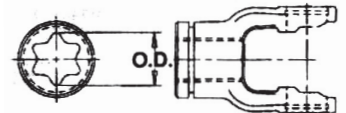
### Tractor Yokes: Pin Type Quick Disconnect

PART NO.	WEASLER NO.	BORE
343-1121	102-7906	1-3/8" - 6 Spline
343-1122		1-3/4" - 20 Spline
343-1123		1-3/8" - 21 Spline



### Inner Profile Yoke

PART NO.	WEASLER NO.	BORE	
		mm	inches
343-1314	300-7951	51.4	2-1/32



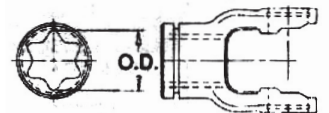
### Inner Profile Tube - 59" Lengths (L)

PART NO.	WEASLER NO.	O.D.		WALL THICKNESS	
		mm	inches	mm	inches
343-1409	400-7951	51.4	2-1/32		



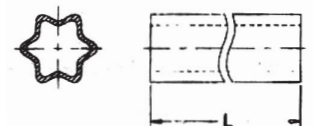
### Outer Profile Yoke

PART NO.	WEASLER NO.	BORE	
		mm	inches
343-1714	700-7961	61	2-3/8



### Outer Profile Tube - 59" Lengths (L)

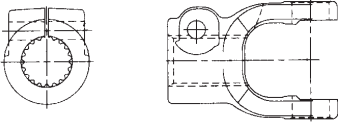
PART NO.	WEASLER NO.	O.D.		WALL THICKNESS	
		mm	inches	mm	inches
343-1609	600-7961	61	2-3/8	4.5	11/64





**Implement Yoke (Clamp)**

PART NO.	WEASLER NO.	BORE
325027.....		1-3/4" -20 Spline.....
325113.....		1-3/8" Taper Bore ....



**SHIELDING AND COMPONENTS FOR SERIES 2500**

83 mm (3-5/16") x 77 mm (3-1/16") DIA

**Outer Shield Tubes**

MFG. NO.	LENGTH
343-2021 .....	1000 mm 40".....
343-2018 .....	1500 mm 60".....



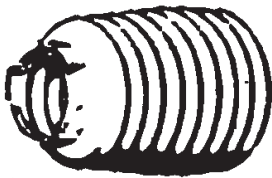
**Inner Shield Tubes**

MFG. NO.	LENGTH
343-2022 .....	1000 mm 40".....
343-2019 .....	1500 mm 60".....

73 mm (2-15/16") DIA



**Inner and Outer Cones**



PART NO.	DESCRIPTION
343-2024 .....	Inner .....
343-2024 .....	Outer .....

**Shield Bearings**



PART NO.	DESCRIPTION
343-2023 .....	Inner .....
343-2023 .....	Outer .....

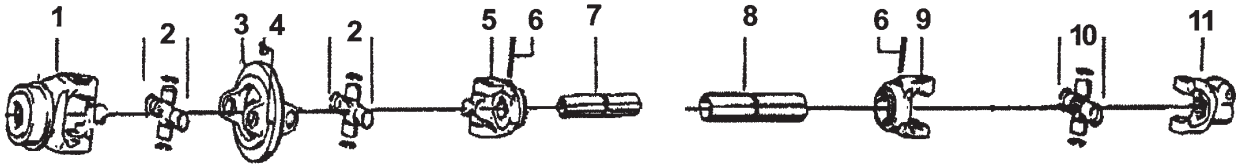
**Chains**



PART NO.	DESCRIPTION
343-2017 .....	Standard Chain .....

# WALTERSCHEID

## METRIC CONSTANT VELOCITY 80° DRIVELINE COMPONENTS 2580 SERIES



### Cross & Bearing Kit for CV Body (Tractor Half)

PART NO.	C mm	B mm	D mm	N mm
344-2204	89	36	106	32

### Cross & Bearing Kit (Implement Half)

PART NO.	BEARING DIAMETER		OVERALL LENGTH	
	mm	inches	mm	inches
343-1208	36	1-13/32	89	3-1/2

### Tractor Yoke: Twist Lock Quick Disconnect

PART NO.	BORE
363617	1 3/8 - 6 Spline
363696	1 3/8 - 21 Spline
363729	1 3/4 - 20 Spline

### CV Body

PART NO.	MANF NO.
343-3125	365725

### Outer Profile Yoke

PART NO.	MANF NO.
343-1714	097140

### CV Inner Profile Yoke

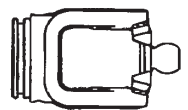
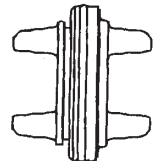
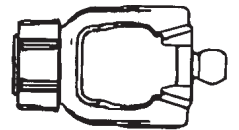
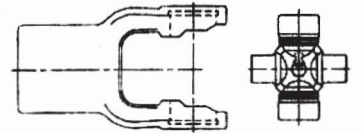
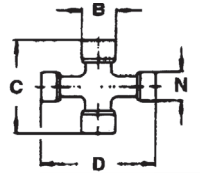
PART NO.	MANF NO.
331573	377589

### Outer Profile Tube - 39" Lengths (L)

PART NO.	O.D.		WALL THICKNESS	
	mm	inches	mm	inches
343-1619	81	2-3/8	4.5	11/64

### Inner Profile Tube - 39" Lengths (L)

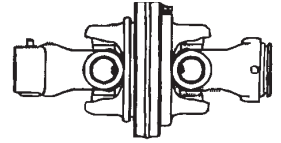
PART NO.	O.D.	
	mm	inches
343-1416	39.5	1-9/16





# METRIC CONSTANT VELOCITY 80° DRIVELINE COMPONENTS 2580 SERIES

## Complete Head Assembly Less Shield

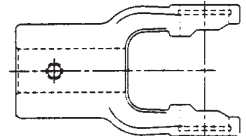


PART NO.	BORE
501-1883 .....	1-3/8" - 6 Spline .....
501-1883-20 .....	1-3/4" - 20 Spline .....
501-1883-21 .....	1-3/8" - 21 Spline .....

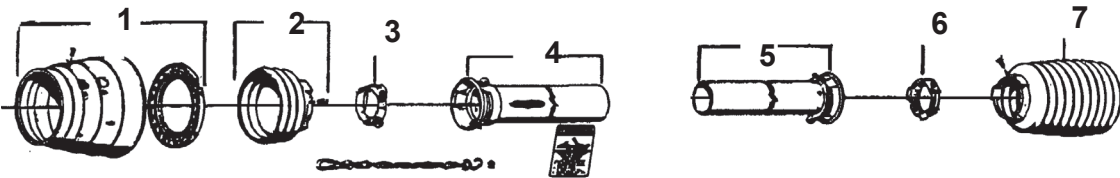
- 343-1937 ..... Pull Collar/Auto Lock Repair Kit - Cast
- 364915 ..... Quick Disconnect Collar Kit
- 364916 ..... AS-Lock Collar Kit

## Implement Yokes

See Implement Yokes - 2500 Series

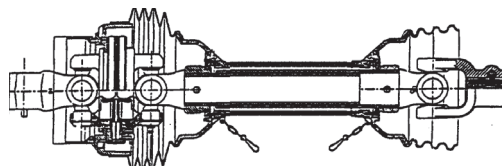


## METRIC CONSTANT VELOCITY SHIELDING 2580 SERIES



PART NO.	ITEM NO.	DESCRIPTION
386165 .....	1 .....	Cone & Bearing Assembly .....
343-2035 .....	2 .....	Rib Cone (3 Ribs) .....
343-2023 .....	3 .....	Shield Bearing .....
343-2021 .....	4 .....	Outer Shield Tube 1000 mm (40") .....
343-2022 .....	5 .....	Inner Shield Tube 1000 mm (40") .....
343-2023 .....	3 .....	Shield Bearing .....
343-2024 .....	7 .....	Standard Guard Cone .....

## COMPLETE CV AG DRIVES



For 15' Batwing Cutters Running 540 RPM PTO

PART NO.	OVERALL LENGTH	TRACTOR	IMPLEMENT
415-1597 .....	55" .....	1 3/8-6 Spline .....	1 3/4-20 Spline .....
912-7966		Complete Shield	

**MODERN**  
AG PRODUCTS, LTD.

**NEW ITEMS! NEW ITEMS! NEW ITEMS! NEW ITEMS!**



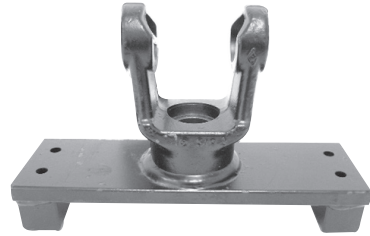
**300-27001**  
Double Yoke, Series 2300 Mfg# 041351  
**300-27376**  
Double Yoke, Series 2400 Mfg# 023437



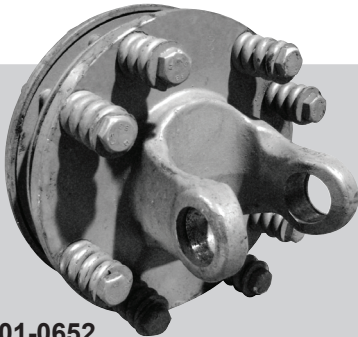
**515233811**  
Clutch Hub 1 3/4-20Z FF4  
**515223811**  
Clutch Hub 1/34 4-20Z FF3



**W824A**  
Flange Yoke, 515233811- Rhino 44R, 8-1/2" C-C

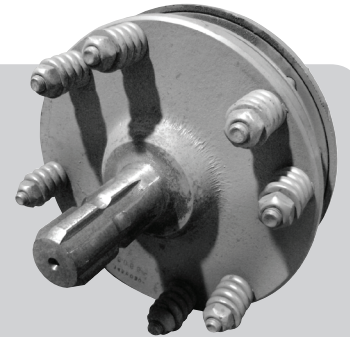


**W3081**  
Flange Yoke, Rhino 35R



**Part# 501-0652**  
Slip Clutch FF4 1 3/4-20Z 6 Series

**Slip Clutches**



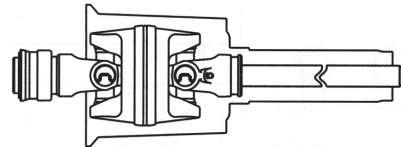
**Part# 501-0654**  
Slip Clutch 1-3/8-6x1-3/8-6 FF4

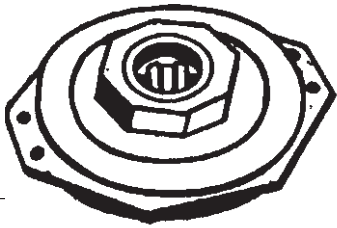
**NEW! From Modern Ag Parts 80° Constant Velocity Half Shaft for John Deere® Round Balers**

For Models 466, 467, 566, 567  
1 3/8-6 Spline Tractor end X  
1-11/16-20 Spline Shaft  
Replaces OEM No.AE59635

**MAP No.** 342-3506  
**Mfg.No.** 19503506

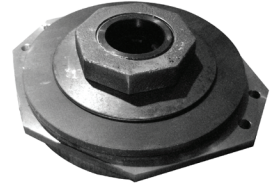
- 342-3506** .....80° Cv 1 3/8-6 Tractor Shaft Half
- 342-3507** .....80° CV 1-3/8-21 Tractor Shaft Half
- 342-3508** .....80° CV 1-3/4-20 Tractor Shaft Half
- 342-3509** .....PTO IMPL 1/2 1-11/16 -20 x 1-3/8-21
- 342-3515** .....80° CV 1-3/8-6 Tractor Tube Half
- 342-3516** .....80° CV 1-3/8-6 Tractor Tube Half



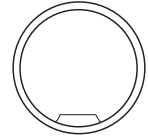
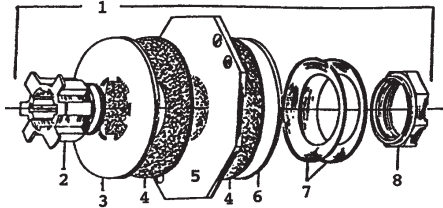


**1 3/8 - 6 SPLINE HUB  
2-PLATE SLIP CLUTCH**

**PART NO. 401-0184**



**PARTS BREAKDOWN FOR 401-0184**

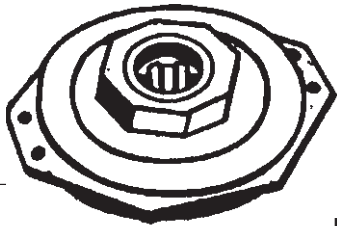


**501-0189**

**Inner Brass Ring for Clutch**

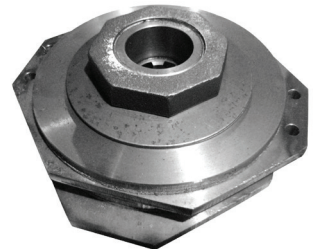
*Used only in older clutches..... \$20.44*

Item	Part No.	Quantity	Description
1.....	401-0184.....	1.....	Slip Clutch .....
2.....	125-841.....	1.....	Hub.....
3.....	501-0194.....	1.....	Pressure Plate ..
4.....	125-823.....	2.....	Friction Disc .....
5.....	501-0188.....	1.....	Drive Plate .....
6.....	501-0186.....	2.....	Pressure Plate ..
7.....	501-0190.....	2.....	Belleville Spring
8.....	125-840.....	1.....	Nut.....

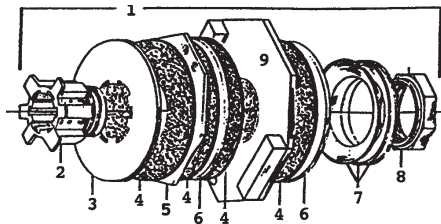


**1 3/8 - 6 SPLINE HUB  
4-PLATE LIP CLUTCH**

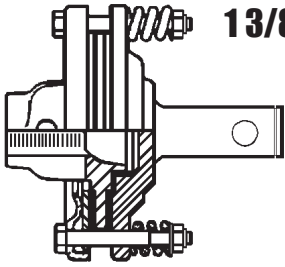
**PART NO. 401-0195**



**PARTS BREAKDOWN FOR 401-0195**



Item	Part No.	Quantity	Description
1.....	401-0195.....	1.....	Slip Clutch .....
2.....	501-0200.....	1.....	Hub.....
3.....	501-0194.....	1.....	Pressure Plate ..
4.....	125-823.....	4.....	Friction Disc .....
5.....	501-0188.....	1.....	Pressure Plate ..
6.....	501-0186.....	2.....	Pressure Plate ..
7.....	501-0190.....	2.....	Belleville Spring
8.....	125-840.....	1.....	Nut.....
9.....	501-0197.....	1.....	Drive Plate .....

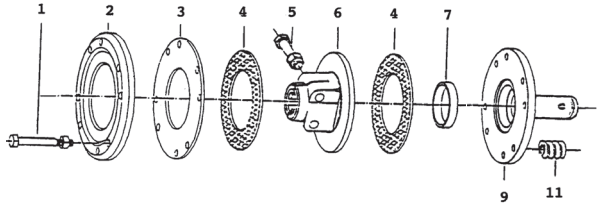


**1 3/8 SMOOTH BORE HUB X 1 3/8 ROUND SHAFT  
SLIP CLUTCH**

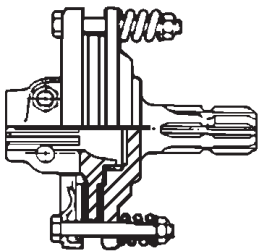
**PART NO. 125-801 2-PLATE**



**PARTS BREAKDOWN FOR 125-801**

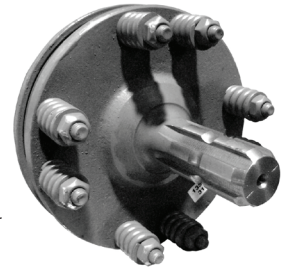


Item	Part No.	Qty	Description
	<b>125-801</b>		<b>Slip Clutch</b>
1	501-0492	1	Bolt & Nut
2	501-0550	1	Pressure Plate
3	501-0551	1	Inner Plate
4	125-811	2	Friction Disc
5	501-0484	1	Bolt, Nut & Washer
6	501-0598	1	Hub 1 3/8 Round Bore
7	501-0487	1	Collar/Bushing
9	501-0599	1	Flange w/round shaft FDS1
11	125-815	1	Spring

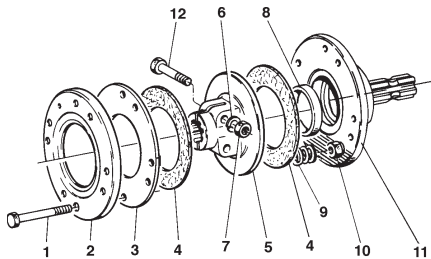


**1 3/8 - 6 SPLINE HUB X 1 3/8 - 6 MALE SHAFT  
SLIP CLUTCH**

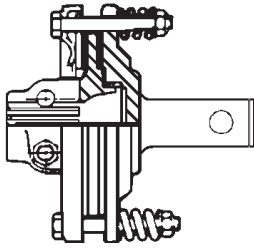
**PART NO. 125-802 2-PLATE**



**PARTS BREAKDOWN  
FOR 125-802**

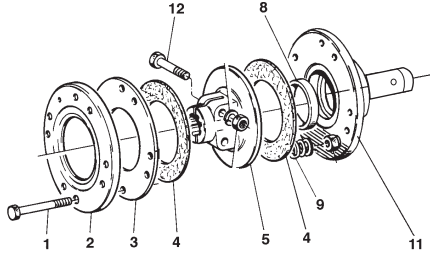


Item	Part No.	Qty	Description
	<b>125-802</b>		<b>Slip Clutch</b>
1	501-0492	1	Spring Bolt & Nut
2	501-0550	1	Outer Pressure Plate
3	501-0551	1	Inner Pressure Plate
4	125-811	2	Friction Disc 140 mm
5	501-0597	1	Female Hub 1 3/8 6 Spline
8	501-0487	1	Sleeve
9	125-815	1	Tension Spring
10	125-816	1	Nut (for Spring Bolt)
11	125-817	1	Splined Shaft Plate
12	501-0484	1	Taper Bolt/Nut



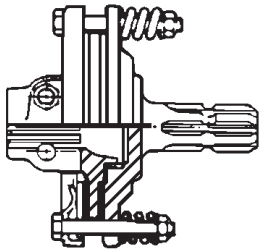
## 1 3/8 - 6 SPLINE HUB X 1 3/8 ROUND SHAFT SLIP CLUTCH

**PART NO. 125-803 2-PLATE**



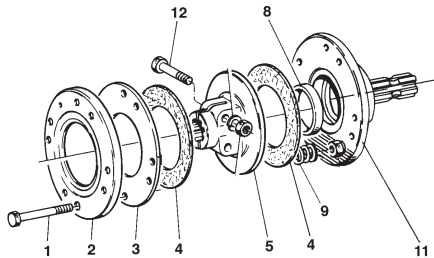
### PARTS BREAKDOWN FOR 125-803

Item	Part No.	Qty	Description
	<b>125-803</b>		<b>Slip Clutch</b>
1	501-0492	1	Spring Bolt
2	501-0550	1	Outer Pressure Plate
3	501-0551	1	Inner Pressure Plate
4	125-811	2	Friction Disc 140 mm (BFD13)
5	501-0597	5	Female Hub 1 3/8 6 Spline
8	501-0487	1	Sleeve
9	125-815	1	Tension Spring
11	125-818	1	Smooth Shaft Plate
12	501-0484	1	Bolt



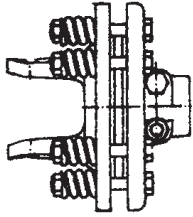
## 1 3/8 - 6 SPLINE SHAFT X 1 3/8 - 21 SPLINE HUB SLIP CLUTCH

**PART NO. 125-805 2-PLATE**



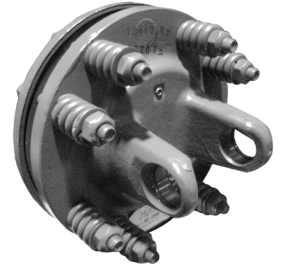
### PARTS BREAKDOWN FOR 125-805

Item	Part No.	Qty	Description
	<b>125-805</b>		<b>Slip Clutch</b>
1	501-0492	1	Spring Bolt & Nut
2	501-0550	1	Outer Pressure Plate
3	501-0551	1	Inner Pressure Plate
4	125-811	2	Friction Disc 140 mm
5	501-0597-21	1	Female Hub 1 3/8 21 Spline
8	501-0487	1	Sleeve
9	125-815	1	Tension Spring
11	501-0599	1	Splined Shaft Plate
12	501-0484	1	Bolt

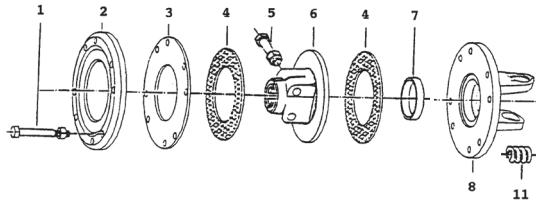


## 1 3/8 - 6 SPLINE HUB X SERIES 4 FF1 SLIP CLUTCH

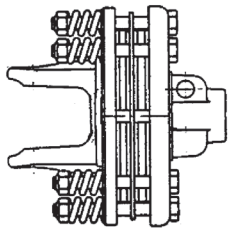
**PART NO. 501-0590 2-PLATE**



### PARTS BREAKDOWN FOR 501-0590



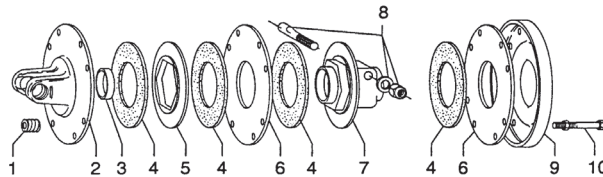
Item	Part No.	Qty	Description
	<b>501-0590</b>		<b>Slip Clutch</b>
1.....	501-0492	1	Bolt & Nut
2.....	501-0550	1	Pressure Plate
3.....	501-0551	1	Inner Plate
4.....	125-811	2	Friction Disc
5.....	501-0484	1	Bolt, Nut & Washer
6.....	501-0597	1	Hub 1 <sup>3/8</sup> - 6Z
7.....	501-0487	1	Collar/Bushing
8.....	253042001	1	Flange Yoke
11.....	125-815	1	Spring



## 1 3/8 - 6 SPLINE HUB X SERIES 6 FF3 SLIP CLUTCH

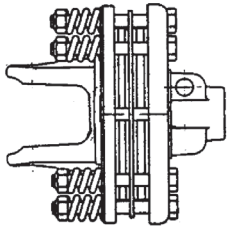
**PART NO. 501-0547**

### PARTS BREAKDOWN FOR 501-0547



Item	Part No.	Quantity	Description
	<b>501-0547</b>		<b>Slip Clutch</b>
1.....	125-815	8	Spring
2.....	501-0555	1	Flange Yoke - 6
3.....	501-0487	1	Collar
4.....	125-811	4	Friction Disc
5.....	501-0554	1	Lining Plate
6.....	501-0551	2	Inner Plate
7.....	501-0548	1	Hub 1 <sup>3/8</sup> - 6
8.....	501-0484	1	Taper Bolt 1 <sup>3/8</sup> - 6
9.....	501-0550	1	Pressure Plate
10.....	501-0549	8	Bolt & Nut

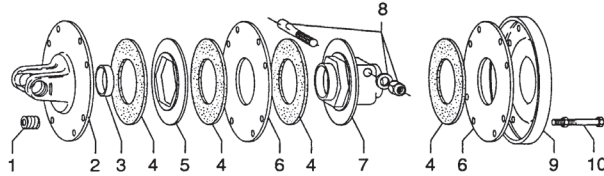




## 1 3/4 - 20 SPLINE X SERIES 8 FF4 SLIP CLUTCH

**PART NO. 501-0650**

### PARTS BREAKDOWN FOR 501-0650

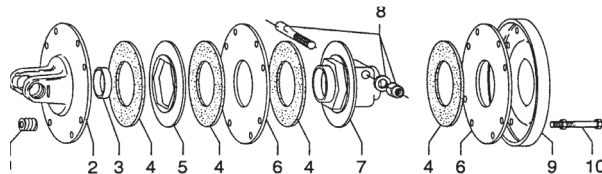
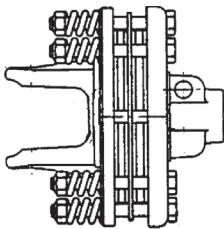


Item	Part No.	Quantity	Description
	<b>501-0650</b>		<b>Slip Clutch</b>
1	125-815	8	Spring
2	253082302	1	Flange Yoke - 8
3	501-0487	1	Collar
4	125-820	4	Friction Disc
5	275230004	1	Lining Plate
6	501-0490	2	Inner Plate
7	515233811	1	Hub 1 3/4 - 20
8	501-0531	1	Taper Bolt 1 3/4 - 20
9	501-0491	1	Pressure Plate
10	501-0549	8	Bolt & Nut

## 1 3/4 - 20 SPLINE X SERIES 6 FF4 SLIP CLUTCH

**PART NO. 501-0652**

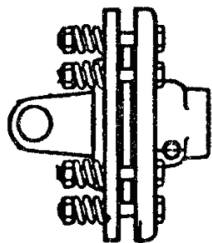
### PARTS BREAKDOWN FOR 501-0652



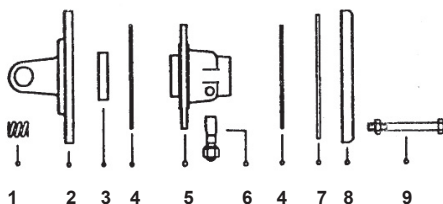
Item	Part No.	Quantity	Description
	<b>501-0652</b>		<b>Slip Clutch</b>
1	125-815	8	Spring
2	501-0486	1	Flange Yoke - 6
3	501-0487	1	Collar
4	125-820	4	Friction Disc
5	275230004	1	Lining Plate
6	501-0490	2	Inner Plate
7	515233811	1	Hub 1 3/4 - 20
8	501-0531	1	Taper Bolt 1 3/4 - 20
9	501-0491	1	Pressure Plate
10	501-0549	8	Bolt & Nut

## 1 3/8 - 6 SPLINE X SIZE 6 FF2 SLIP CLUTCH

**PART NO. 343-802**



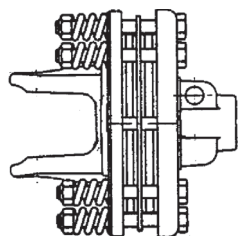
### PARTS BREAKDOWN FOR 343-802



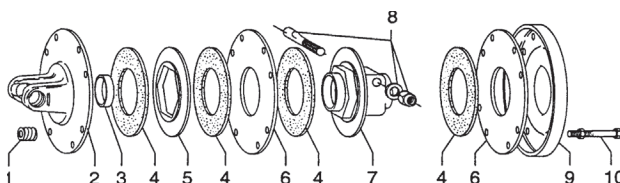
Item	Part No.	Quantity	Description
	<b>343-802</b>		<b>Slip Clutch</b>
1	125-815	8	Spring
2	501-0486	1	Flange Yoke
3	501-0487	1	Collar
4	125-820	2	Friction Disc 160mm OD
5	501-0489	1	Hub 1-3/8" 6 Spline
6	501-0484	1	Taper Bolt
7	501-0490	1	Inner Plate
8	501-0491	1	Pressure Plate
9	501-0492	8	Bolt & Nut

## 1 3/8 - 6 SPLINE X SERIES 8 FF4 SLIP CLUTCH

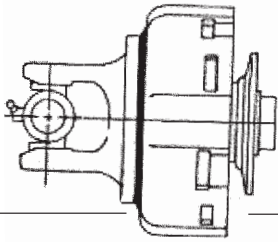
**PART NO. 343-803**



### PARTS BREAKDOWN FOR 343-803



Item	Part No.	Quantity	Description
	<b>343-803</b>		<b>Slip Clutch</b>
1	125-815	8	Spring
2	253082302	1	Flange Yoke - 8
3	501-0487	1	Collar
4	125-820	4	Friction Disc
5	275230004	1	Lining Plate
6	501-0490	2	Inner Plate
7	515230311	1	Hub 1 3/8 - 6
8	501-0484	1	Taper Bolt 1 3/8 - 6
9	501-0491	1	Pressure Plate
10	501-0549	8	Bolt & Nut



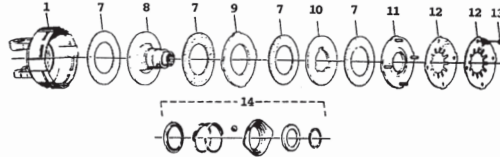
## 1 3/8 - 6 SPLINE HUB X 2400 SERIES FLANGE SLIP CLUTCH

Mfg. by Walterscheid

**PART NO. 501-0351 4-PLATE**



### PARTS BREAKDOWN FOR 501-0351



<u>Item</u>	<u>Part No.</u>	<u>Quantity</u>	<u>Description</u>
	<b>501-0351</b> .....		<b>Slip Clutch</b> .....
1.....	501-0363.....	1.....	Clutch Housing.....
7.....	125-822.....	4.....	Friction Disc .....
8.....	501-0365.....	1.....	Hub 1 3/8 " 6 Spline .....
9.....	501-0367.....	1.....	Drive Plate .....
10.....	501-0368.....	1.....	Drive Plate .....
11.....	501-0369.....	1.....	Thrust Plate.....
12.....	501-0370-W.....	1.....	Belleville Spring .....
12.....	501-0370-R.....	1.....	Belleville Spring .....
13.....	501-0371.....	4.....	Nut 8mm .....
14.....	501-0377.....	1.....	Lock Kit .....

# www.moderagparts.com

We offer the largest selection of Driveline components anywhere. Call us toll-free today!

*Our Customer Service Representatives are available M-F 8 am - 5:30 pm and Saturdays 8 am- 12 pm.*

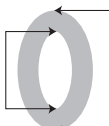


Slip Clutch Replacement Discs, Flexible Coupling Disc  
Jackshaft, Bush Hog Stub Shaft

## Slip Clutch Replacement Discs

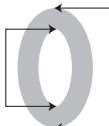
**125-811** REPLACES  
OEM NUMBERS:  
BUSH HOG  
CLUTCH PLATE 64651  
BONDIOLI 247000054  
AGMATE 31953

INSIDE DIAMETER **85MM** OUTSIDE DIAMETER **140MM**



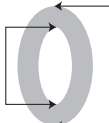
**125-820** REPLACES  
OEM NUMBERS:  
BUSH HOG  
CLUTCH PLATE 64644  
BONDIOLI 247000011  
BONDIOLI 247000061  
AGMATE 31971

INSIDE DIAMETER **96MM** OUTSIDE DIAMETER **160MM**



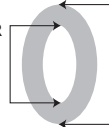
**125-821** REPLACES THE  
OEM NUMBER:  
RHINO  
CLUTCH PLATE 058-1060-003

INSIDE DIAMETER **3.813"** OUTSIDE DIAMETER **7"**



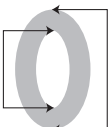
**125-822** REPLACES  
OEM NUMBERS:  
RHINO  
CLUTCH PLATE 754202  
JOHN DEERE W34913  
JOHN DEERE DY10734  
BUSH HOG 76083

INSIDE DIAMETER **91 MM** OUTSIDE DIAMETER **153MM**



**125-823** REPLACES OEM NUMBERS:  
FORD 222042  
TERRAIN KING 748833  
HARDEE C57  
SIDEWINDER 15436  
MASSEY 1045320M1  
CALDWELL 8323  
HOWSE HOTL12

INSIDE DIAMETER **2.625"** OUTSIDE DIAMETER **6.5"**



**125-824** REPLACES  
OEM NUMBERS:  
JOHN DEERE 39301

INSIDE DIAMETER **4.5"** OUTSIDE DIAMETER **6.5"**



**125-825** REPLACES  
OEM NUMBER:  
WOODS 7280  
VERMEER  
106416017

INSIDE DIAMETER **4"** OUTSIDE DIAMETER **6.25"**



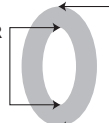
**125-826** REPLACES  
OEM NUMBER:  
BUSH HOG 372-1BH

INSIDE DIAMETER **2.4"** OUTSIDE DIAMETER **6.5"**



**125-828** REPLACES  
OEM NUMBERS:  
FORD 202227  
NEW HOLLAND 1222119  
CALDWELL 3059

INSIDE DIAMETER **2"** OUTSIDE DIAMETER **6-1/2"**



**125-834** REPLACES  
OEM NUMBER:  
BUSH HOG 374BH

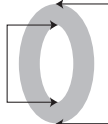
INSIDE DIAMETER **1.125"** OUTSIDE DIAMETER **6.5"**



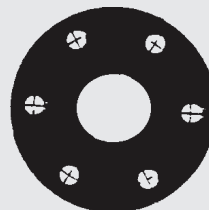
**300-18309**

REPLACES  
OEM NUMBERS:  
SIDEWINDER

INSIDE DIAMETER **2.625"** OUTSIDE DIAMETER **5"**



## FLEXIBLE COUPLING DISC



**Part NO. 340-1903**

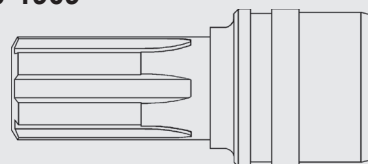
Replaces Servis No: 68-109-4 & 00-749172  
Dia: 6" / Thickness: 3/8"  
Hole Dia: 5/8 (with 6 holes)

**Part NO. 340-1913**

Replaces Servis No: 762215  
Dia: 6-5/16" / Thickness: 23/32"  
Hole Dia: 7/8 (with 6 holes)

**PART NO. 340-1909**

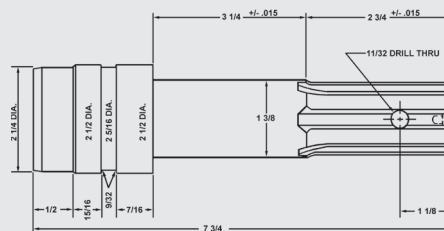
## JACKSHAFT



DESCRIPTION

1-3/8" 6 spline stub shaft.  
Replaces Servis - Rhino # 037-1290-301

## BUSH HOG STUB SHAFT

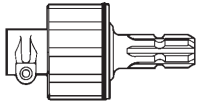


**PART NO. 340-1912**

DESCRIPTION:  
Stub shaft 1 3/8 6 spline

Replaces: 62877  
Models: 315 Early, 126, 109 & 307

Actual product may differ from product illustration.

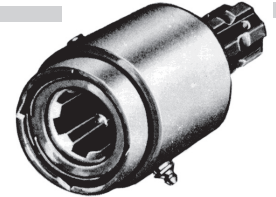


Eurocardan overrunning clutch provide a safe way to protect operators and machinery where inertia units: I.E. Rotary mowers, balers, hay conditioners, etc. Can overrun driving source. They feature a quick detach pin to quickly disconnect from the unit. They take the push out of the driven machine and eliminate the chance of broken or twisted P.T.O. Shafts. Overrunning clutch drive solidly from tractor to driven implement, but overrun smoothly when implement exceeds P.T.O. Speeds.

Part No.	Description	Tractor
335-660	Overrunning clutch w/ quick detach...	1 3/8 to 1 3/8.....
335-670	Overrunning clutch w/ quick detach...	1 3/8 to 1 1/8.....

### HUB CITY OVERRUNNING COUPLERS

- All steel welded housing
- Heat treated alloy steel inner sleeve
- Hardened steel keys, spring loaded
- Snap ring construction for quick, easy disassembly for cleaning & service
- 5/16" X 2" spring rollpin for quick mounting to tractor
- Convenient grease fitting for gun lubrication
- Designed to operate with 1000 rpm p.T.O.'S •Shipping weight 6 lbs.



PART NO.	FEMALE SPLINE	MALE SPLINE	EXTENDS PTO LENGTH	FITS TRACTOR	
331-690	1-1/8 - 6	1-1/8 - 6	6-21/32	4-19/32	All with cross pin hole including Ford
641-453	Roll Pin - 5/16" X 2" ..... \$0.44				

HUB CITY - Overrunning couplers provide a safe way to protect operators and machinery where inertia units: i.e. rotary mowers, balers, hay conditioners, etc. can overrun driving source. They take the push out of the driven machine and eliminate the chance of broken or twisted P.T.O. shafts. Overrunning couplers drive solidly from tractor to driven implement, but overrun smoothly when implement exceeds P.T.O. speeds. **INSTALLATION AND LUBRICATION INSTRUCTIONS ENCLOSED WITH EACH COUPLER.**

### MODERN OVERRUNNING COUPLERS UP-TO 75 HP

- The best PTO adapter value available
- Proven quality for today's toughest applications

Over-running clutch extender; designed to "free wheel" smoothly when implement exceeds tractor's speed; maximum 1000 RPM operating speed.



334-660



334-670

PART NO.	MFG. NO.	FEMALE SPLINE	MALE SPLINE	EXTENDS PTO	OVERALL LENGTH	MAX H.P.	WEIGHT LBS.
334-660	SP16630	1-3/8" X 6	1-3/8" X 6	3-13/16"	6-1/2"	75	5.0
334-670	SP16631	1-1/8" X 6	1-3/8" X 6	3-13/16"	6-1/2"	75	5.0

### PTO ADAPTERS

#### Splined Adapters - to 125 H.P.

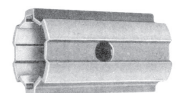
- Capacity to operate on tractors rated to 125 P.T.O. horsepower
- Developed for long and rugged use
- Alloy steel, heat treated for extra strength
- Withstands high shock loads from tractor or implement
- Parco-lubricated rust preventative finish
- Cross pins or setscrews furnished



PART NO.	FEMALE SPLINE	MALE SPLINE	LENGTH	EXTENDS PTO	SECURED BY
332-2	1-3/8 - 21	1-3/8 - 6	6-7/8	4-13/16	Setscrew....

PART NO.	FEMALE SPLINE	MALE SPLINE	LENGTH	SPECIAL APPLICATION
332-355	31/32-10	1-3/8 - 6	2-1/4	IHC Cub & Kubota.....
332-352	1-1/8 - 6	1-3/8 - 6	2-1/4	No Special Application.....
332-363	1-1/8 - 6	1-3/8 - 6	2	Replaces Ford 231082.....

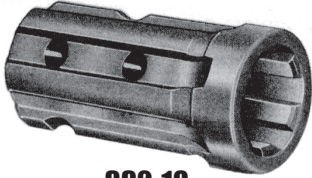
641-453 ..... PTO Roll Pin - 5/16" X 2"



**MODERN**  
AG PRODUCTS, LTD.

### HUB CITY PTO ADAPTERS

#### "FORGED" P.T.O. ADAPTER TO 75 H.P.

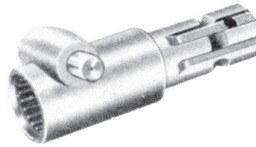


**332-18**

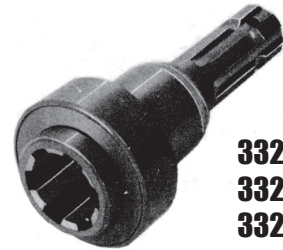
- 1 1/8-6 Spline Female - 1 3/8- 6 Spline Male.
- "Forged" Internal Spline
- Universal Quick-Detach Slot And Bolt Holes -Can Be Used With Any American, British Or European P.T.O. System
- Furnished With 5/16 X 1 1/16 Spring Pin For Direct Connection To P.T.O.
- Overall Length: 3- Extends P.T.O. 1 1/8

### HUB CITY KWIK-D-TACH SPLINE ADAPTERS - TO 75 H.P.

- Capacity to operate on tractors rated to 75 P.T.O. Horsepower
- Patented quick release device
- New P.T.O. Quick release concept - spring Loaded - rotates about 30° by hand for quick Release
- Dependable operation - no sticking pins. Always easily operated
- No sharp edges, protrusions, pin or Interferences to injure operators.



**332-1375**  
**332-92**

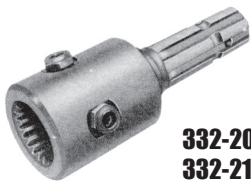


**332-10**  
**332-13**  
**332-15**

**PATENT NO. 3936532**

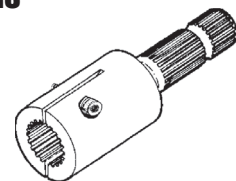
PART NO.	FEMALE SPLINE	MALE SPLINE	LENGTH	EXTENDS PTO
332-10	1-3/8 - 6	1-3/8 - 6	6-1/2	4-5/16
332-13	1-3/8 - 6	1-3/8 - 21	6-1/2	4-5/16

### HUB CITY HEAVY-DUTY SPLINED ADAPTERS



**332-20**  
**332-21**

**FOR TRACTORS WITH 1 3/4-20 SPLINE P.T.O.**

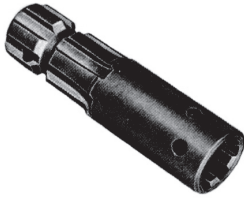


**332-1476**  
**332-1477**  
**332-1490**  
**332-1491**

PART NO.	FEMALE SPLINE	MALE SPLINE	LENGTH	H.P. RATING	EXTENDS PTO	SECURED BY
332-1476*	1-3/4-20	1-3/8 - 6	8-3/16	75	4-15/16	Clamp Type
332-1477*	1-3/4-20	1-3/8 - 21	8-3/16	75	5-7/16	Clamp Type
332-1491	1-3/4-20	1-3/8 - 21	8-3/16	125	4-15/16	Clamp Type

641-453 ..... PTO Roll Pin - 5/16" X 2" .....\$0.44

\* For applications using our standard 03-32-00020 and 03-32-00021 adaptors where heavy overhung load is a factor such as P.T.O. mounted pumps, etc.



### SPLINED ADAPTERS - 75 H.P.

- Capacity to operate on tractors rated to 75 P.T.O. Horsepower
- Provide a means of connecting two dissimilar spline.
- Welded-steel construction for added strength.
- Parco-lubricated rust preventative finish
- Cross pins or setscrews furnished

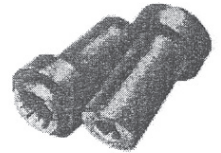
Part No.	Female Spline	Male Spline	Length	Extends PTO	Secured By
*332-3531	1-1/8-6	1-3/8-6	5-1/2	3-9/16	Cross Pin
*332-354	1-1/8-6	1-3/8-6	5-9/16	4-1/8	Cross Pin
*332-400	1-3/8-6	1-1/8-6	6-1/2	4-9/16	Cross Pin
*332-371	1-3/8-6	1-3/8-6	6-1/2	4-9/16	Cross Pin
*332-378	1-3/8-6	1-3/8-6	5-1/8	2-15/16	Cross Pin
332-375	1-1/8-6	1-3/8-6	10-1/2	8-13/16	Cross Pin
332-70	1-3/8-21	1-3/4-20	7	5	Setscrew

\* P.T.O. PIN SOLD SERARATELY 641-453

### HUB CITY KWIK-D-TACH SPLINED PUMP DRIVE ADAPTERS

Same, Safe, Dependable Fast Action Release As Kwik-D-Tach Splined Adapters

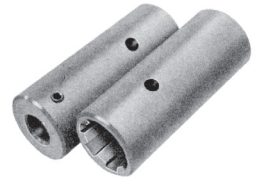
Part No.	Female Spline	Female Round	Keyway	Length
332-11	1-3/8 - 6	0.875	3/16 X 3/32	4-13/32



### HUB CITY SPLINED PUMP DRIVE ADAPTERS

P.T.O. Pin Included With All 1 1/8-6 Spline And 1 3/8-6 Spline Pump Drives.  
1 3/8-21 Spline And 1 3/4-27 Spline Pump Drives Are Supplied With Setscrews.

Part No.	Female Spline	Female Round	Keyway	Length
332-407	1-3/8 - 6	0.625	3/16 X 3/32	4-11/32
332-408	1-3/8 - 6	0.750	3/16 X 3/32	4-11/32
332-409	1-3/8 - 6	0.875	1/4X1/8	4-11/32
332-410	1-3/8 - 6	1.00	1/4X1/8	4-11/32



**Round Handle**



**Square Handle**

PART NO.	PIN DIA	USABLE LENGTH
156-517	1/4"	.2-1/4"
156-518	5/16"	.2-1/4"
156-519	3/8"	.3"
156-265	3/8"	.2-1/4"

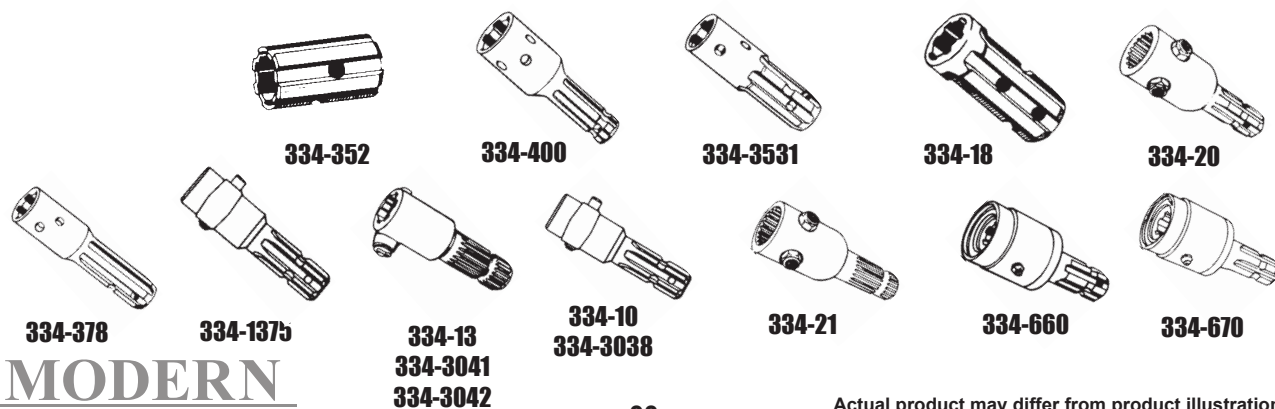
PART NO.	PIN DIA	USABLE LENGTH
156-516	5/16"	.2-1/4"
156-275	3/8"	.2-1/4"

Numerous farm, lawn and garden and industrial applications. Round and square loops. Yellow zinc dichromate plated.

## OVER RUNNING COUPLERS/PTO ADAPTERS

- The best PTO adapter value available
- Proven quality for today's toughest applications

Part#	Mfg#	Description	(F) Spline	(M) Spline	Extends PTO	Overall Length	Max H.P.	Wgt
334-660	SP16630	Over-running clutch extender; designed to "free wheel" smoothly when implement exceeds tractor's speed; maximum 1000 RPM operating speed.	1-3/8" X 6	1-3/8" X 6	3-13/16"	6-1/2"	75	5.0
334-670	SP16631	Over-running clutch increaser; designed to "free wheel" smoothly when implement exceeds tractor's PTO speed, maximum 1000 RPM operating speed.	1-1/8" X 6	1-3/8" X 6	3-13/16"	6-1/2"	75	5.0
334-352	SP1662	Sleeve increaser; fits all tractors except Ford	1-1/8" X 6	1-3/8" X 6	0	2-1/4"	75	0.2
334-373	SP1663	PTO spline adapter; converts 21-spl 1000 RPM to 6 spl 540 RPM	1-3/8" X 21	1-3/8" X 6	3-1/4"	5-7/8"	75	2.0
334-400	SP1664	Universal reducer	1-3/8" X 6	1-1/8" X 6	3-5/16" approx.	5-1/8"	75	1.4
334-3531	SP1665	PTO increaser	1-1/8" X 6	1-3/8" X 6	3-5/8" approx.	5-1/2"	75	1.3
334-18	SP1666	PTO increaser	1-1/8" X 6	1-3/8" X 6	1-1/8" approx.	3-1/4"	75	0.6
334-20	SP1667	PTO spline adapter, 20 to 6 spl; set screw lock	1-3/4" X 20	1-3/8" X 6	4-5/8" approx.	7-1/8"	75	6.1
334-378	SP1668	PTO extender	1-3/8" X 6	1-3/8" X 6	3-5/16" approx.	5-1/8"	75	2.2
334-1375	SP16610	PTO spline adapter with quick release, converts 21 spline 1000 RPM to 6 spline 540 RPM	1-3/8" X 21	1-3/8" X 6	3-7/8"	6-1/2"	75	2.5
334-13	SP16611	PTO spline adapter; quick release; converts 6 spline 540 RPM to 21 spline 1000 RPM	1-3/8" X 6	1-3/8" X 21	4-1/8" approx.	6-1/2"	75	2.5
334-10	SP16612	PTO extender; quick release	1-3/8" X 6	1-3/8" X 6	4-3/8"	6-1/2"	75	2.8
334-21	SP16615	PTO spline adapter; 20 to 21 spline; set screw	1-3/4" X 20	1-3/8" X 21	4-5/8"	7"	75	4.2
334-3028		PTO extender	1-3/8-21F	1-3/8-21M	4"	5-7/8"	75	2.8
334-3038		PTO Adaptor	1-3/8-6F	1-3/8-21M	4"	5-7/8"	75	3.0
334-3041		PTO Adaptor HD	1-3/4-20F	1-3/8-6M	5-7/8"	7-7/8"	75	4.7
334-3042		PTO Adaptor HD	1-3/4-20F	1-3/8-21M	6-1/8"	7-7/8"	75	4.7



**MODERN**  
AG PRODUCTS, LTD.