



Price \$3.00

Home Contact Us Support You are signed in as: Jeff Aldrich | View my Profile
 Login as a different user or Sign out

Online Registration for Chess Championships
 Online Chess Tournament Registration with Credit Cards/PayPal

Shopping Cart
 Now 0 registrations in your cart

Powered By: Chess.MN Ceylon Chess Club

OnlineRegistration.CC

Welcome to the first ever fully-featured state of the art Online Registration System for Chess Championships in USA. Some of the advanced features supported by our system are:

1. List of currently available tournaments with advanced search/filtering options.
2. Interactive search of USCF and FIDE IDs/Ratings when completing player profiles or entering player information for a particular tournament.
3. Ability to store multiple player profiles in a single account for easy retrieval and use in tournament registrations.
4. Comprehensive support for maintenance of user accounts with purchase history, multiple player profiles, individual player tournament history, etc.
5. Ability to register multiple players in multiple tournaments with a single transaction, in a true user friendly e-commerce environment.
6. Ability to purchase USCF memberships together with tournament registration transactions.
7. Exceptional support for tournament organizers for handling various types of tournaments (FIDE rated, Multiple schedules, Multiple sections, Multiple discounts, etc) together with support for comprehensive report generation through a selected set of backend tools.

Tournament Organizers:
 Please contact us if you are interested in using our State of the art Online Registration System.

Michigan Chess Association

2013 Michigan Open (Aug 30, 2013 - Sep 02, 2013)	Michigan	Entry List	Add to Cart	Buy one Now
2013 Michigan Senior (Sep 28, 2013 - Sep 29, 2013)	Michigan	Entry List	Add to Cart	Buy one Now

Michigan Chess Association Membership portal

MICHIGAN CHESS ASSOCIATION - MEMBERSHIP CATEGORIES

Regular with magazine
 Magazine memberships \$15 - Annual
 US\$ 15.00

Regular without magazine
 No magazine memberships \$10 - Annual
 US\$ 10.00

Family memberships
 Family memberships \$25 annual (same mailing address) Extra magazines \$10
 US\$ 25.00

Senior memberships
 Senior memberships \$13 annual (includes magazine) 65 and older
 US\$ 13.00

Life memberships
 Lifetime with magazine
 US\$ 300.00

MEMBER LOGIN

User Name:
 Password:
 Login

Not a member?
 Join MCA
 You are already a MCA member and you forgot your login credentials?
 Establish your login credentials

View current members of MCA

Copyright © 2013 www.mchess.org - Design: Technoza 8.3 P.L.C

Welcome to the New
 MCA Online Tools

September/October 2013



Published by the **Michigan Chess Association**
 Affiliated with US Chess Federation
 Visit us online at www.michess.org
 Send submissions to michessmag@gmail.com
 Editor: **Jeff Aldrich**

Membership Fees

<u>Membership Type</u>	<u>1 Year</u>
Regular Membership with Magazine	\$15
Regular Membership without Magazine	\$10
Senior (over 65)	\$10
Family Membership	\$25
(all members must reside at the same address)	
Life Membership	\$300

For subscriptions to Canada or Mexico, add \$10.

For overseas subscriptions, add \$20.

All amounts are given in US dollars.

Advertising Rates

Standard Rates

Full page	7.5 x 9.75	\$110
Half page	7.5 x 4.75	\$70
Quarter page	Flexible	\$45

Rates for Michigan Chess tournament organizers

Full page	7.5 x 9.75	\$75
Half page	7.5 x 4.75	\$40
Quarter page	Flexible	\$20

Purpose and Services

The Michigan Chess Association is a non-profit organization, which promotes chess education for juniors and adults by publishing Michigan Chess. We also aid schools, chess clubs and local chess events with publicity, information and supplies; by organizing Michigan championship events.

Honorary Life Members

These members have been designated Honorary Life Members of the Michigan Chess Association in recognition of their services and contributions to chess in Michigan. They have honored the MCA far more than the Association could honor them.

H. Jay Carr	Fred Cramer*
Ron Finegold	Howard Gaba*
John Griffin	Thomas A. Jenkins*
Lou Kellner	David Moody
Paul Poschel	Paul Simmons
Mike Skidmore	Harold Steen*
Fjola Vandenburg*	V. E. Vandenburg*
Fred Lindsay	

MCA's Hall of Fame

V. E. Vandenburg*	Paul Poschel
J. D. Brattin*	Leon Stolzenburg
Fjola Vandenburg*	Marvin Palmer
Howard Gaba*	George Eastman
Andrew Palmi*	David Moody
Ron Finegold	Harold Steen*
Paul Simmons	H. Jay Carr
Mike Skidmore	Peter C. Nixon
Stan Beckwith	Fred Lindsay

Patron Members

Contributing \$75 or more in addition to membership dues makes you a Patron Member. We list your name for a year. All donations to the MCA are tax deductible.

Robert W. Emke, Jr.	Norman Haygood, Jr.
Robert Heritier	Paul Michel, Jr
Peter Meyer and Family	Tamas Proszkow
Tony Palmer	B. Michael Williams
Sharat Shetty and Family	Virginia Vandenburg
Daniel Libby	

President	Jennifer Skidmore	jmscamelot@gmail.com	(734) 678-0463
Vice-President	Alan Kaufman	michiganchessfestival@yahoo.com	(248) 497-6912
Treasurer	Jeff Aldrich	jeffchess@charter.net	(810) 955-7271
Secretary	Stan Jarosz	sjarostan@netscape.net	(616) 784-1235
Elected Director	Mike Smith	redwing_85@hotmail.com	(734) 625-5057
Elected Director	Diallo Smith	diallo_smith@yahoo.com	
Elected Director	Barry Hawver	blhawver@gmail.com	(313) 278-0511
Membership Secretary	Paul Kane	paulgkane@gmail.com	(734) 845-6998

Please mail membership correspondence (new memberships, renewals, etc.) to:
 Paul Kane, MCA Membership Secretary, P.O. Box 458, South Lyon, MI 48178.
 Please make checks payable to *Michigan Chess Association*.

Michigan's Top 100

August 2013 USCF Rating List

(From USCF Website, Regular Rated within Last Year)

Rank	Player	Rating	Rank	Player	Rating
1	FM Atulya Shetty	2461	51	Ron Finegold	2000
2	Aaron Kahn	2408	52	John Drexel	2000
3	FM Seth Homa	2386	53	Barry Endsley	2000
4	FM Nikhilesh Kunche	2374	54	Alan Gregg	2000
5	Safal Bora	2316	55	Eric Larson	1996
6	Edward Song	2311	56	Gary Pratt	1987
7	Leonid Strugach	2289	57	Loyd Gentry	1985
8	FM David Sprenkle	2252	58	Jacob Fortuna	1975
9	Jiaxu Ye	2243	59	Fan Ye	1963
10	Eric Fischvogt	2236	60	Michael Dang	1952
11	Michael Bowersock	2228	61	Shawn Bale	1949
12	Thomas Hartwig	2209	62	Kevin Jackson Sr	1940
13	Kevin Noren	2200	63	Allen Wickering	1937
14	Kevin Czuhai	2200	64	Jennifer Skidmore	1932
15	Ariel Levi	2186	65	Manmohan Das	1928
16	John Brooks	2184	66	Ashley Carter	1925
17	Ameer Ghobrial	2182	67	Phil Roe	1925
18	Timothy McGrew	2181	68	Mandy Lu	1923
19	Zhenhua Chen	2169	69	Zoran Stojanovski	1923
20	Eugene Brumley	2167	70	Isaac Zylstra	1922
21	Jalen Wang	2167	71	James Sawaski	1919
22	Michael Chen	2164	72	Joel Halloran	1916
23	Robert O'Donnell	2152	73	Gene Hickey	1913
24	Ratko Bojanovic	2148	74	Michael A Smith	1913
25	Evgeniy Khain	2137	75	Joshua Posthuma	1909
26	Jason Whitten	2128	76	Justin Brown	1902
27	Bronson Gentry	2127	77	Stanley Jarosz Jr	1900
28	FM Andrew Hubbard	2124	78	Tony West	1898
29	David Hahn	2107	79	Gary Robinson	1894
30	Howard Bromberg	2105	80	Kyle Webster	1891
31	Matthew B Sellers	2101	81	Don Vandivier	1890
32	Anthony T Nichols	2101	82	Daniel Libby	1884
33	Robert Ciaffone	2100	83	Kameron Tolliver	1883
34	Manis Davidovich	2082	84	Michael R Smith	1881
35	Apurva Virkud	2078	85	Ronald Williams	1880
36	Cornel Ferenti	2077	86	Douglas Fick	1866
37	Tony Palmer	2074	87	Todd McAuliffe	1858
38	Martijn Otten	2057	88	Gary Kitts	1855
39	Alexander Deatrck	2054	89	Michael Marson	1855
40	Peter Chen	2048	90	Bryan Wilson	1854
41	Morgan Everett	2042	91	Tom Manion	1854
42	Ricardo Lastra	2042	92	Thomas Triplett	1854
43	Ben Li	2037	93	Mengshuang Li	1853
44	Gregory Bailey	2033	94	Rob Drake	1850
45	Salah Chehayeb	2031	95	Stewart Wilkinson	1849
46	William Rhee	2016	96	Raymond Garrison	1842
47	Justin Chen	2014	97	Daniel Sajkowski	1840
48	Jeff Aldrich	2005	98	Richard Henke	1833
49	Andrew Catlin	2004	99	Loren Schwiebert	1831
50	Reynaldo Santiago	2001	100	Andrew Schremser	1831

Current Michigan Champions

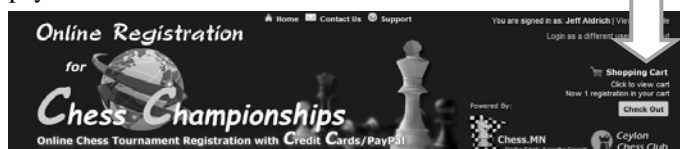
2012 Michigan Open	FM Atulya Shetty
2012 Michigan Open Reserve	Lawrence Yuhas
2012 Michigan Open Booster	Jason Zheng
2013 Michigan Amateur	Peter Chen
2013 Master/Expert	FM Andrew Hubbard
2013 Expert Champion	Thomas Hartwig
2013 Class A Champion	Michael A Smith
2013 Class B Champion	Joshua Posthuma
2013 Class C Champion	Scott Faust
2013 Class D Champion	Sasha Konovalenko
2013 Class E Champion	Adam DeHollander
2013 Novice Champion	Daniel Tressel
2013 Expert Champion	Thomas Hartwig
2013 Bottom-Half Class Over 1900	FM David Sprinkle
2013 Bottom-Half Class U1900	Loren Schwiebert
2013 Bottom-Half Class U1700	Robert Savage
2013 Bottom-Half Class U1500	Kyle Schwiebert
2013 Bottom-Half Class U1300	Charles Cassidy
2013 Bottom-Half Class U1100	Theodore Gregg
2012 Michigan Action	IM Bogdan Vioreau
2012 Michigan Quick	FM Atulya Shetty
2012 Michigan Speed	FM Atulya Shetty
2012 Senior Champion	Morgan Everett
2012 Senior Reserve Champion	Alan Kaufman
2011 Michigan Correspondence	Barry Endsley Eric Fischvogt
2012 Michigan Women's	Jennifer Skidmore
2012 Michigan Women's Reserve	Anna Sun
2013 Primary K-3 Team	Bloomfield Hills Roeper F
2013 Primary K-3 Team Reserve	Detroit Chrysler
2013 Elementary K-5 Team	Troy Barnard A
2013 Elementary K-5 Team Reserve	Detroit Chrysler Bishops
2013 Elementary K-6 Team	Redford Washington Parks
2013 Junior High K-9 Team	Detroit Spain Implods 1
2013 Junior High K-9 Team Reserve	Detroit Spain Implods 2 Sterling Heights Schuchard Detroit Cornerstone Green
2013 High School 9-12 Team	Ann Arbor Huron River Rats
2013 High School K-12 Team Reserve	Ann Arbor Huron Gold
2013 Michigan Junior	Safal Bora
2013 Michigan Young Junior	Edward Song
2013 Michigan Young Junior Reserve	Ishan Patke
2013 Michigan Children's	Bryan Wilson Jr
2013 Michigan Children's Reserve	Jonathan Laier
2013 Michigan Young Children's	Anthony Liao
2013 Michigan Young Children's Reserve	Alexander Bauer
2013 Michigan Collegiate	Ashley Carter
2012 Scholastic Club K-12 Team	Ann Arbor Huron
2012 Scholastic Club K-12 Individual	Jalen Wang
2012 Scholastic Club K-8 Team	Troy All-Stars
2012 Scholastic Club K-8 Individual	Ben Li Daniel Motoc
2012 Scholastic Club K-5 Team	Troy All-Stars
2012 Scholastic Club K-5 Individual	Brian Wilson Jr Josiah Smith
2012 Scholastic Club K-3 Team	J-FORCE Roeper Rough Riders
2012 Scholastic Club K-3 Individual	Anthony Liao Aiden Song Justin Sui

All board diagrams created using
<http://www.jinchess.com/chessboard/composer/>
 by Alexander Maryanovsky

Editor's Column

As of this writing, we have implemented our new online tools. The preferred method for registering for MCA tournaments from now on will be at the website: www.onlineregistration.cc. This secure site will allow players to make accounts, register for MCA tournaments, renew their MCA and USCF memberships, register multiple individuals for an event, and perform single transactions using a credit card or paypal. You can also verify your entry for each event at this site along with checking out who else has registered for an event.

If you register for multiple events or multiple players for an event, this site has the typical shopping cart feature that you will find at most online stores. When the site doesn't take you directly to the payment page after registering, look for the shopping cart icon at the top of the page. If you have one or more registrations, you will see the "Check Out" button to pay.



A separate portion of this site, <https://www.onlineregistration.cc/memberships/MCA/>, allows individuals and families to purchase and renew their MCA memberships using this site. There is a separate login for the MCA online database and I have detailed what you need to do to establish your credentials starting on page 13.

I have personally taken on the task on ensuring these applications meet our needs. If you have questions or run into issues, contact me, so I can pass this along to tech support. Please include screenshots of the page that is giving you an issue and any error messages that you are getting.

Where are the games?

The last couple issues have been very sparse with games. Well, I can only print the information that I have and I have received very few games recently. To improve the quality of the content of the magazine, I need you to help take ownership of the magazine, by sending me your games. Special thanks to Loren Schwiebert, who sent in annotated games from both his son and himself from the Bottom Half Class Championship. If a dozen people send in a couple annotated games, I would have more than I could handle. A reminder that all information for the magazine should be sent to michessmag@gmail.com.

I could also use a games editor to help annotate 6-10 games an issue. Preferably, this would be some over 2000, but I will take any volunteers. I would supply the games to choose from. If you are interested, please contact me at the e-mail address above.

Jeff Aldrich

Table of Contents

Ad: Harold Steen Memorial Cup.....	5
2013 Michigan Junior Championships.....	6
Ad: West Michigan Chess	11
Ad: Universal Midwest Fall Swiss.....	12
Online MCA Membership Database.....	13
Ad: 2013 Michigan Senior Championships.....	18
2013 Michigan Amateur Championships.....	19
Ad: 2013 Motor City Open.....	21
2013 Michigan Botom Half Class Championships.....	22
Michigan Chess Clubs.....	24
Michigan Chess Tournament Calendar.....	26
Ad: Third Annual Fall Festival.....	Back Page

Chess Associations in Michigan

Michigan Chess Association	www.michess.org
West Michigan Chess	www.westmichiganchess.com
Lake Superior Chess Association	www.lakesuperiorchess.org

Websites for chess clubs in Michigan are listed in "Chess Clubs" near the back of the magazine.

National/International Chess Websites

United States Chess Federation	www.uschess.org
World Chess Federation (FIDE)	www.fide.com
Chess Federation of Canada	www.chess.ca
English Chess Federation	www.englishchess.org.uk
German Chess Federation	www.schachbund.de
Russian Chess Federation	www.russiachess.org

Did you know???

You can connect with the Michigan Chess Association on Facebook™! Just search for "Michigan Chess Association" and Like MCA! It's that simple!



2013 HAROLD STEEN MEMORIAL CUP

SPONSORED IN PART BY MICHIGAN CHESS FESTIVAL, LLC

SPECIAL GUEST: MRS. HAROLD STEEN!

CHESS: An INTERNATIONAL "language"!



An INVESTMENT in your FUTURE!

FRIDAY-SATURDAY-SUNDAY, SEPTEMBER 20-22, 2013
3 SECTIONS: OPEN, RESERVE (U1700), NOVICE (Saturday Only)
6-SS • 2- & 3-DAY SCHEDULES

USCF and MCA Memberships Required--Can be purchased on site

PRIZE FUND \$1,750 • 80% GUARANTEED!

ENTRY FEE: By TUES, SEPTEMBER 17th; Add \$10 AFTER:

3-DAY OPEN: \$53 • 2-DAY OPEN: \$52

IM's and GM's FREE! (Entry Fee of \$50 deducted from prize)

3-DAY RESERVE (U1700): \$43 • 2-DAY RESERVE: \$42

SCHEDULES MERGE AFTER RD 2

Up to TWO 1/2-point byes available--must be requested prior to start of Rd 3.

3-DAY SCHEDULE

TL: RDS 1-4, 6-90; RDS 5-6, 6-120

REG: FRI, 5-6:15 PM

ROUNDS

FRI: 7 PM. SAT: 10:30, 2:30, 6:00

SUN: 10, 2:30

2-DAY SCHEDULE

TL: RDS 1-2, 6-45; 3-4, 6-90; 5-6, 6-120

REG: SAT, 8:30-9:30 AM

ROUNDS

SAT: 10:30, 12:30, 2:30, 6

SUN: 10, 2:30

PRIZE FUND: \$1,750 • EACH SECTION 80% GUARANTEED

OPEN PRIZE FUND: \$1,000

(b/30; b/min. 6 per prize section):

1ST \$350, 2ND \$200, \$150 EACH for TOP:

1900-2099, 1700-1899, 1700/UNR

RESERVE (U1700) PRIZE FUND: \$750

(b/30; b/min. 6 per prize section):

1ST \$275, 2ND \$175, \$100 EACH for TOP:

1400-1599, 1200-1399, 1200/UNR

UNR eligible only for UNR and Overall prizes. Headphone, Cell Phone Use Rules Posted On Site

SAT, 9/21: NOVICE (U1000): 4-SS • 6/30 • EF by Tues, 9/17: \$25—ADD \$10 After • REG:
8:30-10 AM • RDS: 11, 1, 2:30, 4 • Prizes: 1st-2nd-3rd-Top U800-Top U600: Large Trophies

SPECIAL GUEST APPEARANCE: Mrs. Harold Steen will again give a short talk at the tournament on Saturday morning. Come meet and hear this interesting woman—even if you're not playing!! **YOU'LL BE GLAD YOU CAME!**

EVENT HELD AT:

HAMPTON INN & SUITES, 36400 Van Dyke, Sterling Hts, MI 48312

Located $\frac{1}{4}$ mile South of Metro Parkway (16 Mile Road) next to Meijer's

Easy access via 3 freeways: 4 $\frac{1}{2}$ miles E of I-75, 4 $\frac{1}{2}$ miles N. of I-676, 4 $\frac{1}{2}$ miles S. of M-59.

Chess Room Rate \$89 (Regularly \$124), includes HOT BREAKFAST! Other amenities include Indoor Pool, Fitness Room, Suite Shoppe; Refrigerator, Microwave, Iron & Board in each room, more! Reservations: Call (586) 276-0600, ask for **STEEN CUP** Rate. **ENTRIES & INFO:** Dr. Ed Mandell, All The King's Men, (586) 558-4790 allthekingsmench@aol.com

2013 Michigan Junior Championships

By Michael Smith

The Michigan Junior championships attracted 286 people to East Lansing March 10 – 11. Sadly, this will be the last major tournament at the MSU Union Building. Due to renovations, most of the playing space will be disappearing.

The K-12 section had 32 players. This is the only section that is played over 2 days. The strong field was lead by a master and 4 experts. Safal Bora, Apurva Virkud, and Mandy Lu all raced out to perfect 3-0 scores. In the fourth round, Safal and Apurva drew, while Mandy lost to Alexander Deatruck. In the final round, Safal beat Alexander to climb to 4.5 points. Apurva was held to a draw by Jalen Wang and had to settle for 2nd place with 4 points. As the K-12 winner, Safal won the right to represent Michigan at the Denker tournament of High School Champions at the U.S. Open in Madison Wisconsin. As the top female finisher in the K-12 section, Apurva won the right to represent Michigan in the National Girls Invitational Tournament in Madison. They will be writing future articles on their experiences in Madison. Just a little teaser for those articles, they both did extremely well.

The K-8 Championship section had 40 players. The field was lead by a master, an expert, and 2 class A players. Edward Song, Michael Chen, Josh Posthuma, and Julian Wellman all started out with perfect 3-0 scores. Edward beat Josh in round 4, while Michael beat Julian. Edward beat Michael in round 5 for a perfect 5-0 score. As the K-8 Championship section winner, Edward won the right to represent Michigan at the Barber tournament of K-8 Champions at the U.S. Open in Madison. Edward will be writing a future article on his experience there. There were 41 players in the K-8 reserve section. It was won by Ishan Patke with a score of 4.5.

The K-5 championship section had 40 players. Bryan Wilson Jr. won this section with a perfect 5-0 score. Siddharth Jha, Robbie Moore, Christian Hausner, and Akash Narayanan tied for second with 4-1 scores. The K-5 reserve section had 40 players. Jonathon Lair won the section with a perfect 5-0 score. Rares Vladic took 2nd with 4.5 points.

The K-3 championship section had 52 players. Anthony Liao won with a perfect 5-0 score. Aiden Song and Jared Ge tied for 2nd with 4.5 points. The K-3 reserve section had 23 players. It was won by Alexander bauer with 4.5 points. Haley Chenfang, Avaneesh Prasad, and Michael Zheng tied for 2nd with 4 points.

The Collegiate championship drew 8 players. Ashley Carter of Michigan State University won the championship on tiebreaks over Kameron Tolliver. They each had a 3-1 score.

Special thanks go out to all the players, parents, and coaches who made this tournament a success. Also to a fine TD staff who made sure things ran smoothly. Players also seemed to enjoy the free game analysis provided by FIDE Master Seth Homa. Thank you also to All the Kings Men Chess Supplies for supplying the boards and sets we played on, as well as providing chess equipment for players to purchase.

Michael Chen (2167)

Edward Song (2206)

2013 Michigan Junior, K-8 (5), Lansing
March 2013

Notes by Edward Song

A clash between the two strongest players by far! This was the last round, and both of us had 4/4. Both me and Michael clearly knew how important this game is, and I'm happy I managed to win in an interesting fight.

1.e4 e5

In the 3rd round, I played 1...c5. I predicted Michael might have prepared against the Sicilian, so I chose something else.

2.Nf3 Nc6 3.Bb5 a6 4.Ba4 Nf6 5.d3

5.0–0 Be7 6.Re1 b5 7.Bb3 d6 is the main line. However, 5. d3 is getting very popular at GM level.

5...b5 6.Bb3 Be7 7.0–0 d6 8.c3 0–0 9.h3 Na5 10.Bc2 c5 11.Nbd2

He played 11.d4 in another game. I was prepared for this move. It's excellent to have a Chigorin Ruy Lopez with an extra tempo.

11...Qc7 12.Re1 Nc6 13.Nf1 Be6 14.Ne3 Rad8

14...d5 is also possible. However, 15.Ng5 did not appeal to me.

15.d4 d5?!

Later, I found 15...cxd4 16.cxd4 d5! Changing the move order slightly. Black equalizes. The idea white could have played in the game wouldn't have worked, because after 17.exd5 Nxd5 18.Nxd5 Bxd5 19.dxe5 black has 19...Bxf3! 20.Qxf3 Nd4

16.exd5 Nxd5 17.Nxd5 Bxd5

17...Rxd5 18.Be4 Rdd8 19.Bxc6 Qxc6 20.Nxe5

18.Nxe5?!

18.dxe5 is not dangerous at all to white. 18...Bxf3 (18...Bxa2 19.Bxh7+! Kxh7 20.Qc2+ Kg8 21.Rxa2±) 19.Qxf3 Nxe5 20.Qf5 Ng6 21.Be3±

18...Nxe5 19.Rxe5

19.dxe5 Bxg2 20.Bxh7+ Kxh7 21.Qh5+ Kg8 22.Kxg2 Rd3≡

19...Bf6 20.Re2

I was a little bit afraid of 20.Bxh7+ but after 20...Kxh7 21.Qh5+ Kg8 22.Rxd5 cxd4 23.cxd4 Bxd4 the pressure on the b2 pawn is very unpleasant. It is probably best to give it away with 24.Be3 Bxb2 25.Rad1 Bf6= with an equal position.

20...cxd4 21.cxd4 Bc4

While Michael sat thinking, I looked at the standings and calculated the tiebreaks. I realized that the tiebreaks are probably really close, so I wasn't sure who had the better tiebreaks, me or Michael.

22.Rd2?

Very ugly. A big mistake both from psychological point of view and the board. The extra pawn does not mean much. The position was equal, but now black is better. Now I can think about winning the game. 22.Re4= Bd5 23.Re2 Bc4 24.Re4

22...Rfe8

22...Bg5 seems like a win. However, 23.Qh5 Bh6 24.Rd1 ends the fun for black.

23.Bd3 Bxd3 24.Rxd3 Rxd4!

24...Rf6a1 White has problems developing his queenside.

25.Be3

Perhaps the best practical chance. 25.Rxd4 Bxd4 26.Qxd4 Re1#

25...Rxd3 26.Qxd3 Bxb2

Suddenly black is up a pawn. White now faces a cheerless defense.

27.Rd1 h6 28.Qb3 Bf6 29.a4 Qc4! 30.Qxc4 bxc4 31.Rd6 Re6 32.Rd2 c3 33.Rc2 a5!?

I wanted to get the a4 pawn. 33...Re4 34.a5 Ra4 35.Bb6

34.Kf1 Re4 35.Ra2 Rb4+

Michael did not defend in the best manner.

36.Kg1

Touch move.

36...Rc4 37.Kf1 c2 38.Bc1 Bg5 39.Ra1 Rd4 40.Ke2 Rd1

Just in time!

41.Ra2 Rxc1 42.Kd3 Rd1+ 43.Kxc2 Rd2+ 44.Kb3 Rxa2 45.Kxa2 Kf8

A frustrated Michael. I'm assuming ☺ plays on only with inertia. Usually he doesn't play on all the way to the end.

46.Kb3 Ke7 47.Kc4 Kd6 48.g3 Bd2 49.f4 Be1 50.g4 Bd2 51.Kb5 Bxf4 52.Kxa5 Kd5 53.Kb6 Ke4 54.a5 Kf3 55.Kc6 Kg3 56.a6 Be3 57.Kd7 Kxh3 58.Ke7 Kxg4 59.Kxf7 h5 60.Kxg7 h4 0-1

The rest is easy. After 10 moves I checkmated white.

16	Brandon O'Neil	1702	W31	W6	D4	L5	L7	2.5
17	Ajay Gudivada	796	L6	W31	W30	½	---	2.5
18	James Lemon	1300	L5	W23	L7	W24	L13	2.0
19	Emilio Estell	1052	W8	L10	L14	W28	L12	2.0
20	Malik Hall	1250	L2	W25	L11	W22	L14	2.0
21	Michael Carter	1225	L4	W32	L13	W23	L15	2.0
22	Sofia Stanesco-Bellu	882	L9	W29	L15	L20	W25	2.0
23	Laria Reynolds	686	L11	L18	W31	L21	W28	2.0
24	Nigel Taliaferro	719	L7	L26	W32	L18	Bye	2.0
25	Samuel Snyder	661	L13	L20	D29	WF	L22	1.5
26	Surya Parasuraman	1430	L1	W24	L6	½	---	1.5
27	Jacob Pochmara	761	L3	W28	½	---	---	1.5
28	Dara Nafiu	198	L12	L27	Bye	L19	L23	1.0
29	Aditya Bajaj	344	L15	L22	D25	½	---	1.0
30	William Renius	750	L10	L8	L17	LF	---	0.0
31	David Doherty	372	L16	L17	L23	LF	---	0.0
32	Sukrut Nadigotti	583	L14	L21	L24	LF	---	0.0

Crosstables and Pictures

Collegiate Championship

No.	Name	Rating	Rd 1	Rd 2	Rd 3	Rd 4	Score
1	Ashley Carter	1929	W5	D3	W7	D2	3.0
2	Kameron Tolliver	1884	W8	D7	W3	D1	3.0
3	Jacob Brasseur	1487	W4	D1	L2	W6	2.5
4	Ezekiel Houghton	Unr	L3	W5	L6	W8	2.0
5	Curtis Varner	1340	L1	L4	W8	W7	2.0
6	Dusan Paredes	Unr	L7	W8	W4	L3	2.0
7	Jeremiah Byrd	1609	W6	D2	L1	L5	1.5
8	Adam Waller	1311	L2	L6	L5	L4	0.0



Champion: Safal Bora



2nd Place: Apurva Virkud



Kameron Tolliver & Ashley Carter



3rd Place: Kyle Webster

Junior Championship (K-12)

No.	Name	Rating	Rd 1	Rd 2	Rd 3	Rd 4	Rd 5	Score
1	Safal Bora	2247	W26	W7	W9	D2	W4	4.5
2	Apurva Virkud	2063	W20	W13	W3	D1	D5	4.0
3	Kyle Webster	1903	W27	W12	L2	W14	D6	3.5
4	Alexander Deatrick	2034	W21	W14	D16	W10	L1	3.5
5	Jalen Wang	2136	W18	W11	L10	W16	D2	3.5
6	Justin Chen	1945	W17	L16	W26	W13	D3	3.5
7	Michael Dang	1861	W24	L1	W18	D9	W16	3.5
8	Eric Larson	2022	L19	W30	W12	D11	W10	3.5
9	Peter Chen	1991	W22	W15	L1	D7	D11	3.0
10	Mandy Lu	1870	W30	W19	W5	L4	L8	3.0
11	Evan Hawver	1785	W23	L5	W20	D8	D9	3.0
12	Soumya Kulkarni	1537	W28	L3	L8	W15	W19	3.0
13	Alan Sun	1760	W25	L2	W21	L6	W18	3.0
14	Andrew Schremser	1754	W32	L4	W19	L3	W20	3.0
15	Zachary Smith	1670	W29	L9	W22	L12	W21	3.0

Young Junior Championship (K-8)

No.	Name	Rating	Rd 1	Rd 2	Rd 3	Rd 4	Rd 5	Score
1	Edward Song	2206	W28	W12	W13	W3	W2	5.0
2	Michael Chen	2154	W24	W15	W11	W4	L1	4.0
3	Joshua Posthuma	1858	W21	W18	W14	L1	W11	4.0
4	Julian Wellman	1634	W22	W16	W10	L2	W12	4.0
5	Ayush Das	1485	W30	D33	D6	W15	W14	4.0
6	Duncan Darnell	997	W9	W7	D5	L8	W20	3.5
7	Vijay Sriram	1470	W27	L6	W28	W19	D8	3.5
8	Ben Li	1913	W29	L10	W33	W6	D7	3.5
9	Michael Pappas	1409	L6	W27	W24	D20	W10	3.5
10	Karthik Vuyyuru	1387	W39	W8	L4	W13	L9	3.0
11	Surya Parasuraman	1430	W35	W20	L2	W17	L3	3.0
12	Sasha Konovalenko	1396	W36	L1	W21	W25	L4	3.0
13	Austin Ye	1475	W25	W17	L1	L10	W24	3.0
14	Ryan Gudal	1400	W26	W23	L3	W22	L5	3.0
15	Jeremy Mathews	1393	W37	L2	W29	L5	W22	3.0
16	Jason Ye	1360	W31	L4	L25	W27	W23	3.0

17	Aaron Glueck	1345	W38	L13	W23	L11	W25	3.0
18	Justin Liang	1366	W34	L3	L22	W33	W30	3.0
19	Ryan Li	1358	L23	W35	W34	L7	W26	3.0
20	Eric Zhong	1251	W40	L11	W32	D9	L6	2.5
21	M Johnson Kerketta	1145	L3	W37	L12	D34	W33	2.5
22	Nicholas Konovalenko	1135	L4	W31	W18	L14	L15	2.0
23	Surya Krishnan	858	W19	L14	L17	W29	L16	2.0
24	Veronic Gawarecki	1155	L2	W26	L9	W36	L13	2.0
25	Connor Linn	1112	L13	W38	W16	L12	L17	2.0
26	Marinos Bernitsas	984	L14	L24	W31	W28	L19	2.0
27	Anna Sun	1061	L7	L9	W39	L16	W38	2.0
28	Gary Ugrinovskiy	1200	L1	W36	L7	L26	W39	2.0
29	Saano Murembya	1145	L8	W39	L15	L23	W34	2.0
30	Kyle Smith	1117	L5	L34	W37	W38	L18	2.0
31	Dipankar Roy	897	L16	L22	L26	W37	W35	2.0
32	Samuel Thompson	510	L33	Bye	L20	L35	W36	2.0
33	Adam Dehollander	1287	W32	D5	L8	L18	L21	1.5
34	Arnav Nadgir	912	L18	W30	L19	D21	L29	1.5
35	Leo Sabin	1029	L11	L19	L36	W32	L31	1.0
36	Laurence Yang	947	L12	L28	W35	L24	L32	1.0
37	Julia Shen	929	L15	L21	L30	L31	Bye	1.0
38	Advait Vuppala	680	L17	L25	Bye	L30	L27	1.0
39	Christian Duran	925	L10	L29	L27	Bye	L28	1.0
40	Benjamin Gauthier	224	L20	---	---	---	---	0.0

9	Noah Burns	605	W33	W22	D1	D3	L4	3.0
10	Alexander Bemben	609	W37	D4	W8	L1	D16	3.0
11	Rithvik Kodali	470	W26	W17	L3	W15	L6	3.0
12	Adhava Arivalagan	653	W40	W15	L2	L4	W26	3.0
13	Josh Virk	780	W27	W21	W29	L2	L5	3.0
14	Michael Aldrich	577	W36	L1	W37	W17	L3	3.0
15	Jacob Pochmara	761	W24	L12	W7	L11	W28	3.0
16	Noah Dehollander	753	L19	W30	D23	W25	D10	3.0
17	Aditya Kandula	748	W31	L11	W28	L14	W27	3.0
18	Prithvi Joshi	321	L3	L26	W36	W40	W29	3.0
19	Hanwen Zuo	337	W16	L8	L6	W30	D25	2.5
20	Benjamin Gauthier	224	½	L7	W31	W24	L8	2.5
21	Nicholas Wiesner	664	W32	L13	D34	W23	L7	2.5
22	Ethan Kopel	755	W35	L9	D24	L7	W31	2.5
23	Siddhar Nagisetty	447	L2	W38	D16	L21	W35	2.5
24	Cydney Mckeel	440	L15	W40	D22	L20	W34	2.5
25	Mattheas Boelter	526	W41	L29	W26	L16	D19	2.5
26	Evan Dempsey	Unr	L11	W18	L25	W38	L12	2.0
27	Agniva Bhaumik	458	L13	W32	W39	L6	L17	2.0
28	Vyron Reynolds	393	L4	W36	L17	W32	L15	2.0
29	Barry Sabin	706	Bye	W25	L13	L5	L18	2.0
30	Cameron Abrams	101	D8	L16	D35	L19	W38	2.0
31	Khushi Afre	283	L17	W33	L20	W39	L22	2.0
32	Daniel Miller	200	L21	L27	W41	L28	W39	2.0
33	Evan Bouchard	Unr	L9	L31	L38	Bye	W40	2.0
34	Christop Gauthier	298	L1	W41	D21	L8	L24	1.5
35	Nate Mcneilly	358	L22	L39	D30	W37	L23	1.5
36	Claire Gauthier	Unr	L14	L28	L18	D41	Bye	1.5
37	Sophia Louden	101	L10	Bye	L14	L35	D41	1.5
38	T.J. Christian	235	L6	L23	W33	L26	L30	1.0
39	Katie Abrams	Unr	L5	W35	L27	L31	L32	1.0
40	Nicholas Pochmara	105	L12	L24	Bye	L18	L33	1.0
41	Kalil Olsen	Unr	L25	L34	L32	D36	D37	1.0



Champion: Edward Song



2nd Place: Michael Chen



3rd Place: Joshua Posthuma
4th Place: Julian Wellman
5th Place: Ayush Das

Young Junior Reserve (K-8 U800)

No.	Name	Rating	Rd 1	Rd 2	Rd 3	Rd 4	Rd 5	Score
1	Ishan Patke	749	W34	W14	D9	W10	W2	4.5
2	Anun Kumaran	774	W23	W6	W12	W13	L1	4.0
3	Hanshi Zuo	752	W18	D5	W11	D9	W14	4.0
4	Jack Harris	759	W28	D10	D5	W12	W9	4.0
5	Alexander Boyd	544	W39	D3	D4	W29	W13	4.0
6	Bryce Richardson	694	W38	L2	W19	W27	W11	4.0
7	Jahlin Brooks	490	½	W20	L15	W22	W21	3.5
8	Nicolas Miller	625	D30	W19	L10	W34	W20	3.5



Champion: Ishan Patke



2nd Place: Anun Kumaran



4th Place: Jack Harris
3rd Place: Hanshi Zuo
5th Place: Alexander Boyd
6th Place: Bryce Richardson

Children's Championship (K-5)

No.	Name	Rating	Rd 1	Rd 2	Rd 3	Rd 4	Rd 5	Score
1	Bryan Wilson Jr	1644	W16	W11	W2	W9	W3	5.0
2	Siddharth Jha	935	W28	W5	L1	W13	W9	4.0
3	Robbie Moore	1307	W33	W17	W10	W7	L1	4.0
4	Christian Hausner	1119	W29	W21	W24	L6	W10	4.0
5	Akash Narayanan	1195	W37	L2	W36	W15	W14	4.0
6	Josiah Smith	1411	W35	L10	W23	W4	D7	3.5
7	Blake Bottesi	1073	W40	W27	W26	L3	D6	3.5
8	Jade Ge	1019	L24	D22	W27	W26	W12	3.5
9	Daniel Hou	1211	W14	W15	W12	L1	L2	3.0
10	Madhav Ramesh	914	W38	W6	L3	W11	L4	3.0
11	Anvit Rao	1034	W25	L1	W19	L10	W24	3.0
12	Sid Byrapaneni	896	W31	W13	L9	W17	L8	3.0
13	Robby Riles	1150	W19	L12	W35	L2	W22	3.0
14	Stephen Dzialo	983	L9	W34	W28	W24	L5	3.0
15	Max Morrow	945	W34	L9	W30	L5	W25	3.0
16	Dylan Staffeil	791	L1	L25	W34	W29	W27	3.0
17	Jason Jiang	995	W39	L3	W25	L12	W28	3.0
18	Brian Wu	1072	W22	L24	D21	W23	D20	3.0
19	Advaith Vuppala	680	L13	W31	L11	W36	W26	3.0
20	Azola Martin	989	½	L26	W39	W21	D18	3.0
21	Rohan Ray	859	W30	L4	D18	L20	W33	2.5
22	Shivam Jha	656	L18	D8	W33	W32	L13	2.5
23	David Benkes-Toth	632	½	W32	L6	L18	W36	2.5
24	Jainil Shah	641	W8	W18	L4	L14	L11	2.0
25	Paarth Desai	648	L11	W16	L17	W30	L15	2.0
26	Sriamsha Dubbaka	461	W36	W20	L7	L8	L19	2.0
27	Ben Li	561	W32	L7	L8	W37	L16	2.0
28	Jack Smith	576	L2	W37	L14	W35	L17	2.0
29	Erik Koscak	672	L4	L30	W31	L16	W35	2.0
30	Anirban Sarkar	808	L21	W29	L15	L25	W34	2.0
31	Aditya Bapat	489	L12	L19	L29	W40	W39	2.0
32	Avery Long	911	L27	L23	W40	L22	W37	2.0
33	Ryan Hawver	730	L3	D39	L22	W38	L21	1.5
34	Emmanu Richardson	620	L15	L14	L16	W39	L30	1.0
35	Caleb Kushner	769	L6	W38	L13	L28	L29	1.0
36	Sai Vepa	860	L26	W40	L5	L19	L23	1.0
37	Cameron Stewart	724	L5	L28	W38	L27	L32	1.0
38	Abhina Keshamouni	568	L10	L35	L37	L33	W40	1.0
39	Ari Bozann	639	L17	D33	L20	L34	L31	0.5
40	Luigi Milani	671	L7	L36	L32	L31	L38	0.0



3rd Place: Robbie Moore 4th Place: Christian Hausner 5th Place: Akash Narayanan

Children's Reserve (K-5 U600)

No.	Name	Rating	Rd 1	Rd 2	Rd 3	Rd 4	Rd 5	Score
1	Jonathon Laier	576	W24	W5	W9	W3	W7	5.0
2	Rares Vladic	378	W15	W4	D6	W11	W12	4.5
3	Americo Milani	486	W14	W17	W10	L1	W11	4.0
4	Sudhan Annamalai	530	W28	L2	W24	W9	W10	4.0
5	Matthew Zepf	464	W30	L1	W35	W23	W13	4.0
6	Theodore Morrow	470	W18	W35	D2	L7	W21	3.5
7	Anisha Fujii	507	W27	D20	W25	W6	L1	3.5
8	Samuel Weiss	533	W26	L9	W19	D21	W20	3.5
9	Rebecca Young	445	W40	W8	L1	L4	W23	3.0
10	Zachary Massat	406	W12	W22	L3	W16	L4	3.0
11	Nolan Donovan	408	W34	W13	W23	L2	L3	3.0
12	Michael Aldrich	577	L10	W33	W20	W22	L2	3.0
13	Nikhil Mishra	528	W21	L11	W26	W25	L5	3.0
14	Marisa Redding	218	L3	W15	W29	L20	W22	3.0
15	Paul Janes	544	L2	L14	W34	W27	W25	3.0
16	Zion Johnson	526	L17	W18	W28	L10	W32	3.0
17	Khushi Afre	283	W16	L3	L22	W36	W29	3.0
18	Savonna Richardson	141	L6	L16	W38	W26	W33	3.0
19	Agniva Bhaumik	458	W31	L23	L8	W28	W24	3.0
20	Luke Burmeister	369	W37	D7	L12	W14	L8	2.5
21	Matthew Raymond	284	L13	W40	W36	D8	L6	2.5
22	Ben Collins	504	W33	L10	W17	L12	L14	2.0
23	Michelle Tao	575	W38	W19	L11	L5	L9	2.0
24	Gavin Shadrack	403	L1	W37	L4	W35	L19	2.0
25	Kaleb Packard	255	W36	W29	L7	L13	L15	2.0
26	Jed Amoguis	313	L8	W31	L13	L18	W39	2.0
27	Gage Rocheleau	227	L7	D34	W30	L15	D31	2.0
28	Trisha Pal	306	L4	W38	L16	L19	W35	2.0
29	Shreyas Talluri	475	W39	L25	L14	W30	L17	2.0
30	Sophie Rees	140	L5	W32	L27	L29	W36	2.0
31	Mathav Vignesh	138	L19	L26	D33	W37	D27	2.0
32	Mehki Merrick-Brown	421	L35	L30	W37	W39	L16	2.0
33	Prasanth Peddireddy	225	L22	L12	D31	W34	L18	1.5
34	Joseph Ouellette	Unr	L11	D27	L15	L33	W38	1.5
35	Benjamin Zhang	Unr	W32	L6	L5	L24	L28	1.0
36	Samuel Kramer	524	L25	W39	L21	L17	L30	1.0
37	Aaron Converse	114	L20	L24	L32	L31	W40	1.0
38	Harmony Rocheleau	109	L23	L28	L18	W40	L34	1.0
39	Ahnaf Syed	173	L29	L36	W40	L32	L26	1.0
40	Everson Guild	Unr	L9	L21	L39	L38	L37	0.0



Champion: Bryan Wilson Jr 2nd Place: Siddharth Jha



2nd Place: Rares Vladic Champion: Jonathon Laier



5th Place: Matthew Zepf 4th Place: Sudhan Annamalai 3rd Place: Americo Milani

Young Children's Championship (K-3)

No.	Name	Rating	Rd 1	Rd 2	Rd 3	Rd 4	Rd 5	Score
1	Anthony Liao	1032	W40	W12	W6	W5	W4	5.0
2	Aiden Song	1095	W8	W9	W14	D3	W10	4.5
3	Jared Ge	841	W52	W18	W15	D2	W13	4.5
4	Kaivalya Kulkarni	712	W29	W21	W17	W13	L1	4.0
5	Saket Kulkarni	714	W33	W11	W16	L1	W20	4.0
6	Alex Guo	705	W43	W7	L1	W30	W11	4.0
7	Antonio Valdiviavush	487	W28	L6	W19	W15	W25	4.0
8	Alexander Boyd	544	L2	W46	W41	W18	W12	4.0
9	Tai Karir	605	W51	L2	W29	W28	W17	4.0
10	Corin Tang	562	½	W27	W38	W16	L2	3.5
11	Joshua Lee	567	W19	L5	W21	W23	L6	3.0
12	Nathan Ouyang	611	W42	L1	W35	W14	L8	3.0
13	Justin Wu	906	W36	W30	W22	L4	L3	3.0
14	Pranav Srinivas	747	W24	W20	L2	L12	W34	3.0
15	Justin Song	654	W46	W23	L3	L7	W31	3.0
16	Arjun Bajaj	1104	W32	W25	L5	L10	W26	3.0
17	Aswath Karai	567	W44	W45	L4	W22	L9	3.0
18	Tachong Min	661	W47	L3	W31	L8	W33	3.0
19	Rishi Shetty	Unr	L11	W33	L7	W36	W37	3.0
20	Pranav Kannan	585	W49	L14	W47	W24	L5	3.0
21	Luke Hausner	353	W37	L4	L11	W48	W30	3.0
22	Eric Zhang	693	W34	W41	L13	L17	W29	3.0
23	Caden Che	835	W48	L15	W36	L11	W32	3.0
24	Eva Erhardt	427	L14	W42	W45	L20	W28	3.0
25	Yashwant Dubbaka	692	W35	L16	D39	W38	L7	2.5
26	Tobias Tang	170	½	L38	W27	W39	L16	2.5
27	Mack Burmeister	402	½	L10	L26	W52	W45	2.5
28	Justin Sui	841	L7	W43	W48	L9	L24	2.0
29	William Harris	402	L4	W44	L9	W47	L22	2.0
30	Daniel Huang	584	W50	L13	W34	L6	L21	2.0
31	Stephanie Dzialo	368	L41	W32	L18	W40	L15	2.0
32	Charlie Reese	548	L16	L31	W42	W35	L23	2.0

33	Nick Collins	408	L5	L19	W50	W41	L18	2.0
34	Yaseen Metwally	380	L22	W37	L30	W45	L14	2.0
35	Ismael Metwally	365	L25	W40	L12	L32	W48	2.0
36	Sullivan Klus	438	L13	W51	L23	L19	W46	2.0
37	Minseok Shin	662	L21	L34	W46	W43	L19	2.0
38	Kaden Thornton	477	½	W26	L10	L25	D39	2.0
39	Anthony Varkey	452	L45	W49	D25	L26	D38	2.0
40	Constantin Stanescu-Bellu	489	L1	L35	W49	L31	W47	2.0
41	Bryan Chen	113	W31	L22	L8	L33	D49	1.5
42	Anuj Bapat	Unr	L12	L24	L32	W50	D43	1.5
43	Siri Byrapaneni	382	L6	L28	W51	L37	D42	1.5
44	Daniel Tan	Unr	L17	L29	D52	L46	W51	1.5
45	Michael Lu	801	W39	L17	L24	L34	L27	1.0
46	Iniya Umachandran	147	L15	L8	L37	W44	L36	1.0
47	Luca Milani	337	L18	W52	L20	L29	L40	1.0
48	Andy Mak	460	L23	W50	L28	L21	L35	1.0
49	Eleanor Klinger	Unr	L20	L39	L40	D51	D41	1.0
50	Andrew Wahoski	Unr	L30	L48	L33	L42	Bye	1.0
51	Henry Conway	Unr	L9	L36	L43	D49	L44	0.5
52	Brendan Tyrer	485	L3	L47	D44	L27	---	0.5



3rd Place: Jared Ge 2nd Place: Aiden Song Champion: Anthony Liao



5th Place: Saket Kulkarni 4th Place: Kaivalya Kulkarni

Young Children's Reserve (K-3 U300)

No.	Name	Rating	Rd 1	Rd 2	Rd 3	Rd 4	Rd 5	Score
1	Alexander Bauer	141	½	W12	W13	W7	W2	4.5
2	Hayley Chenfang	232	W22	W3	W15	W5	L1	4.0
3	Avaneesh Prasad	Unr	W6	L2	W21	W14	W5	4.0
4	Michael Zheng	121	W8	L13	W9	W16	W6	4.0
5	Marcello Milani	175	W19	W10	W14	L2	L3	3.0
6	Tayten Bashore	130	L3	W22	W10	W15	L4	3.0
7	Nicole Zhong	248	L17	W23	W8	L1	W14	3.0
8	Carter Kelly	Unr	L4	W18	L7	W22	W13	3.0
9	Landen Taber	Unr	W16	L14	L4	W21	W15	3.0
10	Jacob Berman	Unr	W21	L5	L6	W23	W16	3.0
11	Iyanu Nafiu	222	---	½	W20	D13	W18	3.0

12	Christopher Mendez	Unr	½	L1	L22	W17	W21	2.5
13	Katarina Bauer	187	½	W4	L1	D11	L8	2.0
14	Arthi Narayanan	146	W23	W9	L5	L3	L7	2.0
15	Lucas Chenault	167	W18	W17	L2	L6	L9	2.0
16	Hibah Fattah	165	L9	W20	W17	L4	L10	2.0
17	Vincent Zheng	115	W7	L15	L16	L12	W23	2.0
18	Mihir Naik	102	L15	L8	Bye	W20	L11	2.0
19	Alex Perfitt	103	L5	L21	L23	Bye	W22	2.0
20	Benjamin Mendez	Unr	½	L16	L11	L18	Bye	1.5
21	Aryan Afre	119	L10	W19	L3	L9	L12	1.0
22	Parini Rao	107	L2	L6	W12	L8	L19	1.0
23	Nicholas Pochmara	105	L14	L7	W19	L10	L17	1.0



2nd Place: Hayley Chenfang Champion: Alexander Bauer



5th Place: Marcello Milani e 4th Place: Michael Zheng 3rd Place: Avaneesh Prasad

Children's Sponsors

No.	Name	Rating	Rd 1	Rd 2	Rd 3	Score
1	Robert Taliaferro I	1546	W5	W2	W3	3.0
2	Ronald Larson	1198	W6	L1	W5	2.0
3	James O'Neil	1258	D4	W6	L1	1.5
4	Elanor Tang	484	D3	L5	W6	1.5
5	Bryce Richardson	694	L1	W4	L2	1.0
6	Vyron Reynolds	393	L2	L3	L4	0.0

Junior Sponsors

No.	Name	Rating	1	2	3	4	Score
1	Robert Taliaferro I	1546	x	W	W	W	3.0
2	Robert Bemben	1803	L	x	W	W	2.0
3	Ronald Larson	1198	L	L	x	W	1.0
4	Robin Ray	105	L	L	L	x	0.0



West Michigan Chess

- *User Database*
- *Annotated Games*
- *Opening Articles*
- *Tactics Puzzles*
- *Player Interviews*
- *Improvement Contest*
- *Scholastic Focus*
- *Event Calendar*
- *Thematic Tournaments*
- *Informative Blogs*

PLEASE VISIT!

<http://www.westmichiganchess.com>

ALL THE KING'S MEN CHESS and BRAIN GAMES, Inc.



An INVESTMENT in your FUTURE... An INTERNATIONAL Language!



27170 DEQUINDRE ROAD, WARREN, MICHIGAN 48092 → (586) 558-4790 · (586) 558-2046 (Fax)

◆ Home of the UNIVERSAL CHESS CLUB ◆

UNIVERSAL MIDWEST FALL SWISS

FRIDAY-SUNDAY, SEPTEMBER 13-15, 2013

5-SS · 3 SECTIONS · 6 GRAND PRIX POINTS

PRIZE FUND: \$2,650 · 65% GUARANTEED (per section!)



SITE: SUPER 8 STEVENSVILLE HOTEL, 4290 Red Arrow Highway, Stevensville, MI, 49127
(269) 429-3218 · FAX (269) 429-8882 · TOURNAMENT HELD IN THE MEETING ROOM.

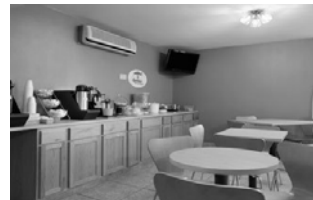
FORMAT:

3 Sections: OPEN, U1800, U1400. 2-Day and 3-Day Schedules available. OPEN Section FIDE-RATED. Up to two 1/2-pt. byes available; must be requested before start of RD 3. 6 Grand Prix Points! Unrated eligible ONLY for Overall prizes, in ALL sections, can play in any section, may not be allowed in lower sections at discretion of TD. USCF and a STATE memberships required; can be purchased on site. PRIZE FUND: \$2,650! 65% Guaranteed! Bring Boards, Pieces, Clocks! None provided; can be purchased from Book Vendor on site.



STRICT RULES IN FORCE REGARDING HEADPHONE and CELL PHONE USE. RULES POSTED AT SITE!

TL	3-DAY: G/120, d5. 2-Day: Rds. 1-2, G/45, d5; Rds. 3-5, G/120, d5
EF	By Tues, 9/10; ADD \$10 after: <u>OPEN</u>: 3-Day: \$63. 2-Day: \$62. IM's and GM's Free! (\$50 EF deducted from prize). <u>RESERVE</u> (U1800): 3-Day: \$53. 2-Day: \$52. <u>U1400 SECTION</u>: 3-Day: \$43. 2-Day: \$42
RDS	<u>3-Day</u>: Fri, 7 PM. Sat, 11:30, 4. Sun, 10, 2:30. <u>2-Day</u>: Sat, 11:30, 2, 4. Sun, 10, 2:30
REG	<u>3-Day</u>: Fri, 5-6:15 PM. <u>2-Day</u>: Sat, 10-11 AM
PRIZE FUND	\$2,650 OVERALL (b/24, b/min. 6 per prize section): 65% GUARANTEED! <u>OPEN</u>: \$1,100: 1st, 2nd: \$350, \$225; TOP X, A, U1800: \$175 EACH. <u>U1800</u>: \$850: 1st, 2nd: \$300, \$175; TOP B, C, U1400: \$125 EACH. <u>U1400</u>: \$700: 1st, 2nd: \$250, \$150; TOP D, E, U1000: \$100 EACH. TD: SR. TD Dr. Ed Mandell.
DIR/ LODG	SUPER 8 STEVENSVILLE HOTEL, 4290 Red Arrow Highway, Stevensville, MI 49127, (269) 429-3218. FOR RESERVATIONS, call toll-free at 1-800-741-5072, or go online at http://hotelreservations.com and type in Stevensville, scroll down to Super 8 Stevensville Hotel. Ask for Chess Rate (\$50) by Fri, 9/6, for this great rate! The hotel is located off I-94, 24 miles from Indiana, convenient to many parts of OH, Ontario, IN, Chicago and Western MI.



Amenities include FREE SuperStart continental breakfast, FREE Wi-Fi, HBO, microwave, refrigerator, a gym, swimming pool, shuffleboard, bocce ball, basketball. Other amenities included!

ENTRIES/INFO:

Dr. Ed Mandell, (586) 558-4790 Cell: (248) 635-2375). All The King's Men Chess and Brain Games, Inc., 27170 Dequindre Road, Warren, MI 48092. Fax: (586) 558-2046. Email: allthekingsmench@aol.com.

Welcome to Online MCA Membership Database

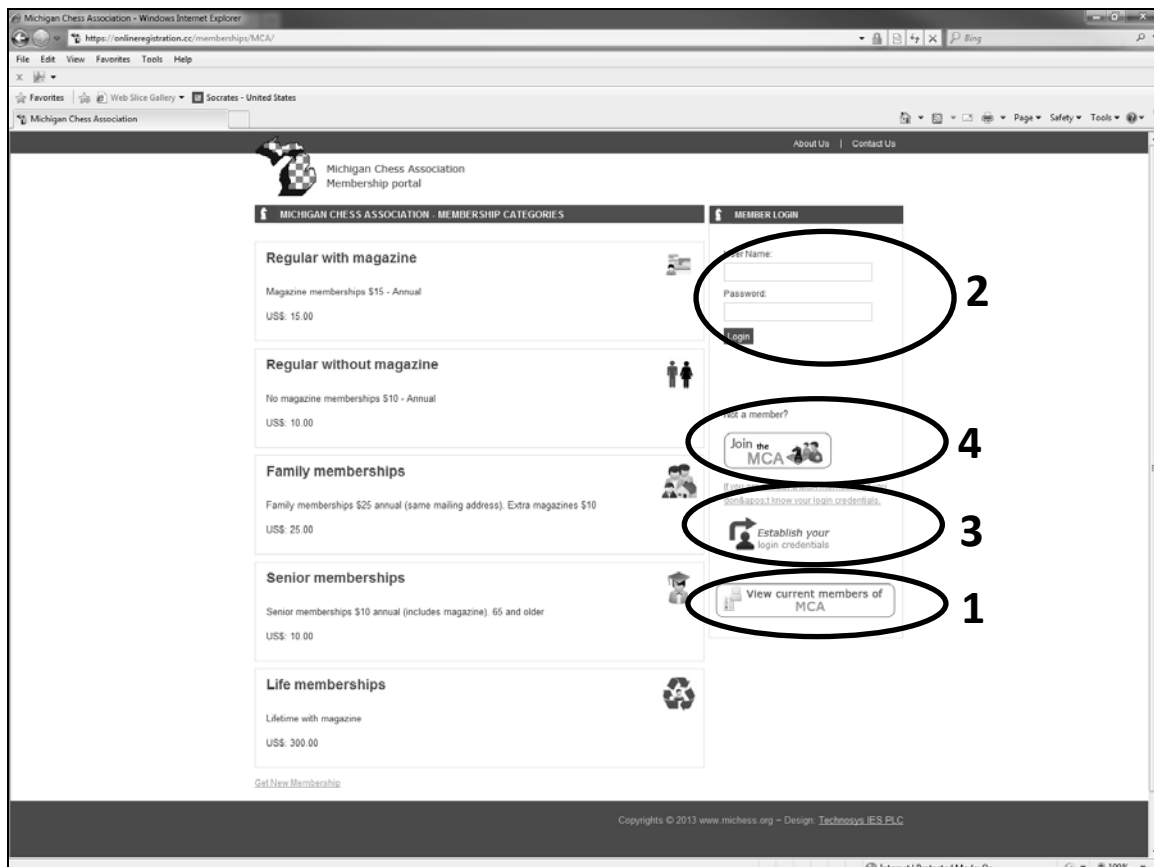
The MCA has finally moved into the Internet age for our registration and membership information. From now on, the preferred method for registering for an MCA Championship event will be accessing <https://onlineregistration.cc> and scrolling down to find "Michigan Chess Association". This new system is fully automated and you will be able to see who is currently registered for our tournaments. This system will also verify that your MCA membership is current for the duration of the tournament and require you to renew if it is expired.

The second part of the process is that you will now find the MCA Membership Database online, so you can always check to see if your membership is current or if you need to renew. Part of this process is that we now expect you to take ownership of your membership in the MCA. You will get an ID and password to access your information to verify that it is correct and be able to renew your membership automatically without intervention from the MCA.

If you plan on playing in a non-MCA event that requires MCA membership, it is highly recommended that you renew through this new online portal prior to attending the event to avoid the inevitable delays that will occur when having the local club and TDs process your membership.

I will now go through what you will see with the Online MCA Membership Database and what you need to do to gain access to your account. The MCA Membership Database Homepage can be found at <https://onlineregistration.cc/memberships/MCA/index.php>. This article is also posted on the MCA website, so if you have any questions or there is anything that I can add to the document to help with the process, please contact Jeff Aldrich at jeffchess@charter.net.

1. Are you currently or have you been an MCA member? If you are not sure, click on this link to get to the list of MCA memberships, both current and expired. Give it a minute to load; there is already a long list of members. This list will always have the latest and greatest information that we have.
2. Sign into your MCA membership account. If you don't have login credentials, go to item number 3.
3. Establish your login credentials. Here, you must enter a security code. To get this code, there is a link to e-mail your MCA membership database administrators. One of us will respond in 24-48 hours.
4. If you have never been a member (or at least it has been long enough that you are not on our list), click Join the MCA to join, pay, and establish your credentials all at once.



1. **Membership List:** Note that each header can be sorted by that columns information.
 - a. Name – List of all past and present members starts off in alphabetical order.
 - b. MCA ID – You will now have a new ID number specific to your MCA membership.
 - c. USCF ID – If you have one, we will list it here.
 - d. Exp Date – When your MCA membership will expire, so you can be sure to renew before it does.
 - e. Bad Address? – We verify our address information before sending out our Magazine and Bulletin mailings. Due to typos or other reasons, the post office will tell us that an address is not deliverable. This may be why you haven't been receiving our mailings. Now, you can help us figure out why.
 - f. Search feature – You can search the database by Last Name, MCA ID , or USCF ID. If you can't find your name, try searching for you USCF ID because there is always a chance of a typo in your name. This search feature is much easier than scrolling down the long list to find your name.

Michigan Chess Association
Membership portal

Membership Home

CURRENT ACTIVE MEMBERS

Searching criteria: By Last Name By MI ID By USCF ID

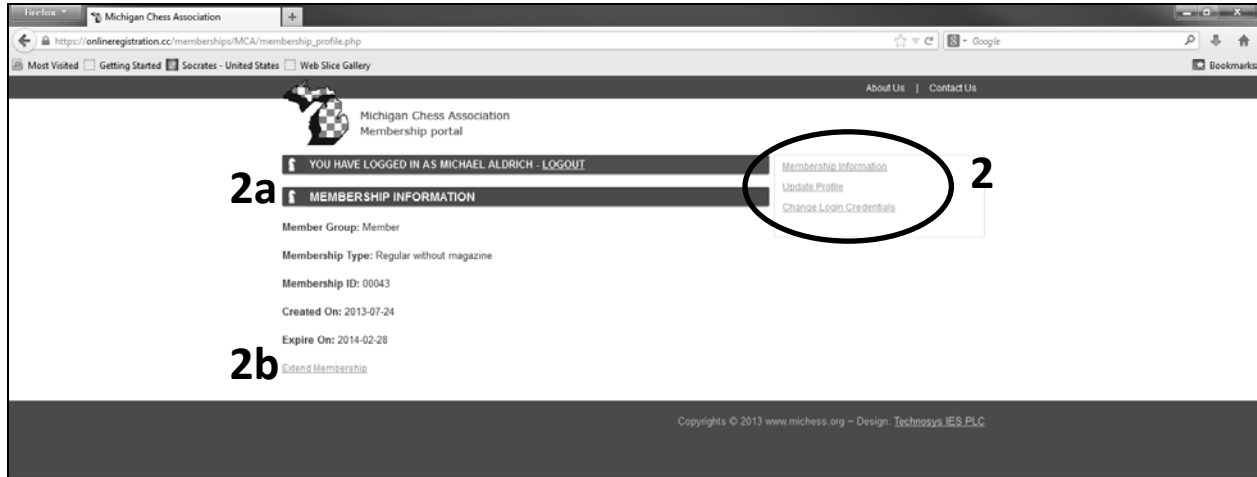
Filtering Options
 All Members Current Members Expired Members

Cancel Search

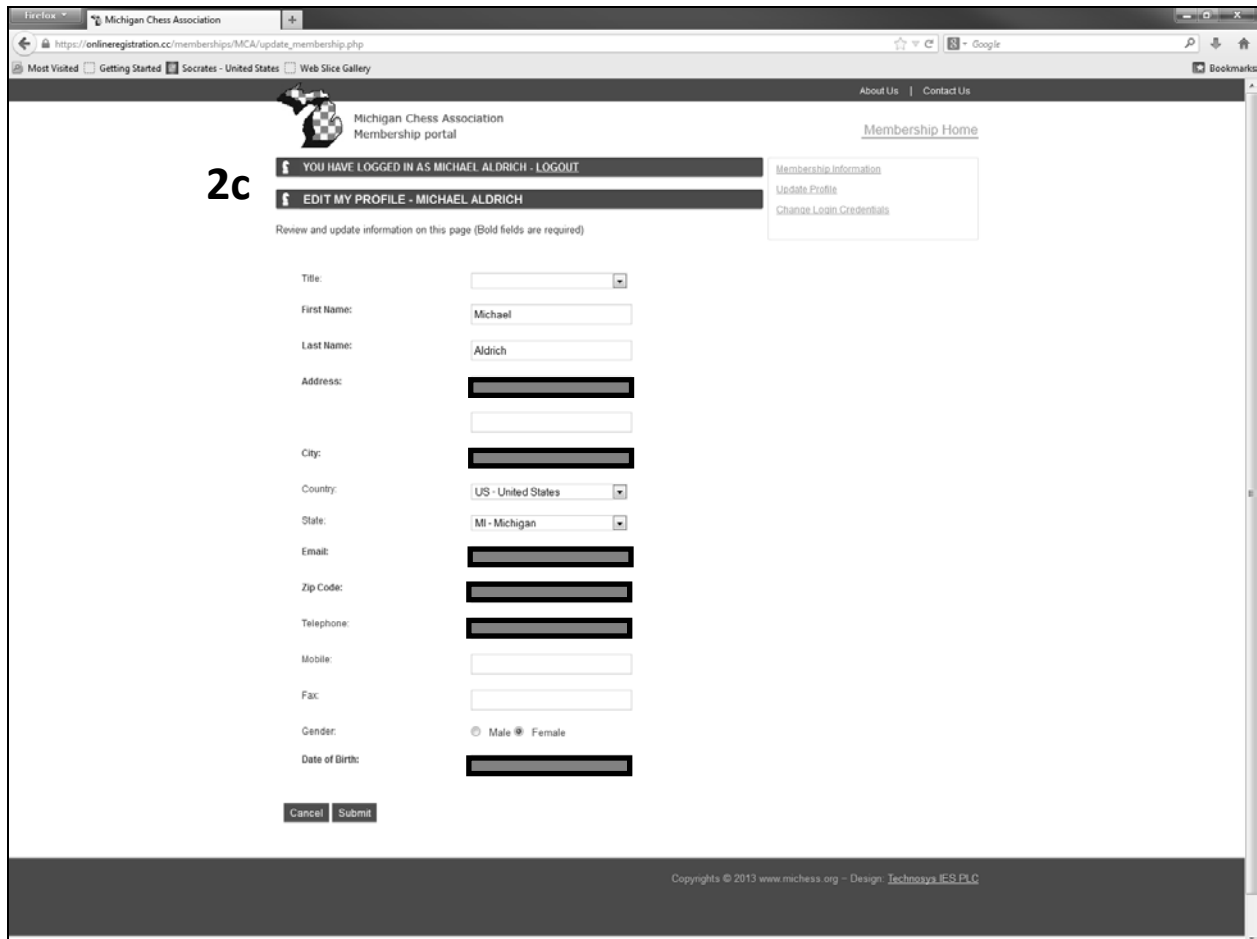
1a Name	1b MCA ID	1c USCF ID	1d Exp. Date	1e Bad Address?
Aadin, Harshad	00001	1394474	2014-01-31	No
Abapo, Jerem	00002	14137727	2013-01-31	No
Abar, Christa	00003	13800558	2014-01-31	No
Abar, Matthew	00004	15029977	2013-10-31	No
Abbaduska, Robby	00005	12405964	2013-05-31	No
Abbott, James	00006	14325851	2011-01-31	No
Abby, India	00007	14132914	2011-01-31	No
Abby, Jade	00008	12626344	2012-08-31	No
Abdul, Ahmad	00009	15121407	2014-01-31	No
Aberatne, Pubudu	00010	14368486	2012-01-31	No
Abernathy, Christian	00011	13311006	2008-01-31	No
Abood, Den	00012	14634423	2015-01-31	No
Abrams, Cameron	00013	15107321	2014-01-31	No
Abrams, Katie	00014	14222827	2010-05-31	No
Abrishaman, Mike	00015	14769323	2012-09-30	No
Abston, Jordan	00016	14686910	2012-10-31	Yes
Abubked, Muhammad	00017	12459177	2007-12-31	No
Accad, William	00018	14395726	2013-01-31	No
Achanta, Aditya	00019	13924021	2009-01-31	No
Acharya, Dev	00020	15082712	2014-01-31	No
Acheson, Danny	00021	15097297	2014-01-31	No
Achuonjei, Pryderick	00022	13538877	2013-05-31	No
Adam, Karl Martin	00023	12601768	2011-12-31	No
Adams, Barry	00024	12923584	2012-10-31	No
Adams, Ja'monte				

Membership Portal: After you login in with your credentials, this is where you can renew and help us keep your information up to date. There are 3 selections on the right hand side of the page. When you first login, you will see option 2a: Membership Information.

- a. Membership Information – Lists your basic membership information such as Type, MCA ID, Creation Date, and Expiration Date.
- b. Extend Membership – This is where you click to renew your membership. Once you select this item, the remainder should be self explanatory.



- c. Membership Information – This is where you can update your own information in the MCA database. Please verify that the information is correct and update as you see fit. Be sure to include at least one phone number and an e-mail address so we can contact you if necessary. This information will never be sold to outside entities and will only be used in support of your MCA membership.



- d. Change Login Credentials – This is where you can update your user name and password for your MCA account. Should you forget this information, you will need to contact the MCA admins.

Michigan Chess Association
Membership portal

2c

YOU HAVE LOGGED IN AS MICHAEL ALDRICH | LOGOUT

EDIT MY LOGIN CREDENTIALS - MICHAEL ALDRICH

Review and update information on this page (Bold fields are required)

User Name:

Old Password:

New Password:

Confirm Password:

Cancel Submit

Membership Information
Update Profile
Change Login Credentials

Copyrights © 2013 www.michess.org – Design: Technosys IES PLC

2. **Establish Your Login Credentials:** Enter the security code in the box below. To get this code, click the link to e-mail your MCA membership database administrators. Be sure to include your MCA ID. One of us will respond in 24-48 hours. After this page, you will be able to select your User Name and password. If you have a Family membership, it is only necessary to establish credentials for the main member and not for the Family Add-On members.

Michigan Chess Association
Membership portal

3

FIRST TIME LOG IN TO MCA MEMBERSHIP CONTROL PANEL

If you have received a security code via postal mail from MCA, please enter your security code below.

If you don't know your security code please contact [MCA Admins](#) to obtain your security code.

Security Code:

Submit

Copyrights © 2013 www.michess.org – Design: Technosys IES PLC

3. **Get New Membership** - When purchasing a new membership, include the following information. Be sure to include at least one phone number and an e-mail address so we can contact you if necessary. This information will never be sold to outside entities and will only be used in support of your MCA membership.

The screenshot shows a web browser window with the Michigan Chess Association website. The page title is "Michigan Chess Association Membership portal" and the URL is "https://onlineregistration.cc/memberships/MCA/membership.php?action=new". A large number "4" is overlaid on the left side of the page. The form is titled "GET NEW MEMBERSHIP" and contains the following fields:

- Family Add-On Membership: No Yes
- Membership Category:
- USCF ID (or "new" or "pending"):
- Title:
- First Name:
- Last Name:
- Address:
- City:
- Country:
- State:
- Zip Code:
- Telephone:
- Mobile:
- Fax:
- Gender: Male Female
- Date of Birth:
- Email:
- User Name:
- Password:
- Confirm Password:
- Period:

At the bottom of the form are "Cancel" and "Submit" buttons. The footer of the page reads "Copyrights © 2013 www.michess.org - Design: Technosys IES PLC".

2013 MICHIGAN SENIOR CHAMPIONSHIPS

Flint, September 28-29, 2013

SITE:	Eastside Senior Citizens Center 3065 N. Genesee Rd, Flint, MI 48506
DIRECTIONS:	South entrance off Genesee Road, just south of Richfield Rd. Community Center is straight back off of Genesee Rd.
FORMAT	4-SS / 2 Sections Must be 50 years old by 12/31/2013. Open and Reserve (U1600) One ½-point bye available in rounds 1-3, must be requested prior to round 2. USCF & MCA required. Members of other Senior Centers: Bring your sign in cards to swipe in here.
ENTRY FEE:	\$20 by 9/27, On-site: \$25
ADVANCE REGISTRATION:	Online Registrtrion Preferred: https://www.onlineregistration.cc/ Jeff Aldrich (TD), 7453 Whippoorwill Ln., Davison, MI 48423; jeffchess@charter.net ; (810) 955-7271 (cell/text)
ON-SITE REGISTRATION:	Saturday, 9:00-9:45am
ROUNDS:	4-SS; 10am, 3pm Both Days
TIME CONTROL:	G/135;d5
PRIZES	Open: 1st: \$75 + Trophy 2nd & U1800: Trophy Reserve: 1st: \$50 + Trophy 2nd & U1400: Trophy

2013 Michigan Amateur Championships

Crosstables and Pictures

Amateur Championship (U2000)

No.	Name	Rating	Rd 1	Rd 2	Rd 3	Rd 4	Rd 5	Score
1	Peter Chen	1981	W37	W9	W16	W6	W4	5.0
2	Zachary Smith	1752	W35	D3	W26	W25	W5	4.5
3	Arthur Huerta	1448	W42	D2	W23	W8	D13	4.0
4	Thomas Triplett	1858	W39	D23	W11	W14	L1	3.5
5	Stanley Jarosz Jr	1930	W15	W30	D8	W29	L2	3.5
6	Ronald Williams	1888	W31	W10	W32	L1	D12	3.5
7	Jacob Crandell	1399	W13	L14	W22	D9	W30	3.5
8	Ricky Warnicke	1756	W33	W12	D5	L3	W29	3.5
9	Jacob Brasseur	1626	W47	L1	W33	D7	W25	3.5
10	Nathan Hartwig	1623	W43	L6	W24	W17	D15	3.5
11	Brandon O'Neil	1708	W19	W24	L4	D20	W28	3.5
12	Lily Zhou	1519	W49	L8	W36	W16	D6	3.5
13	Michael Smith	1942	L7	W50	W31	W27	D3	3.5
14	Bryan Wilson Jr	1665	W36	W7	½	L4	W23	3.5
15	Jeannie Zhang	1377	L5	W48	W34	W32	D10	3.5
16	Frederick Lahr	1800	W17	W27	L1	L12	W33	3.0
17	Nicholas Konovalenko	1284	L16	W52	W18	L10	W32	3.0
18	Michael Skidmore	1800	L24	W19	L17	W41	W35	3.0
19	Akash Narayanan	1177	L11	L18	W42	W31	W37	3.0
20	Michael Pappas	1423	W38	L32	W47	D11	D21	3.0
21	James Huerta	1656	D40	L26	W38	W45	D20	3.0
22	Jack Li	875	W53	L28	L7	W51	W40	3.0
23	Vijay Sriram	1466	W34	D4	L3	W26	L14	2.5
24	Aiden Song	1259	W18	L11	L10	W34	D27	2.5
25	Robert Ellis	1064	D26	W45	W28	L2	L9	2.5
26	Don Schmitz	Unr	D25	W21	L2	L23	W41	2.5
27	James Karakos	1554	W52	L16	W35	L13	D24	2.5
28	Soumya Kulkarni	1549	½	W22	L25	W44	L11	2.5
29	Surya Parasuraman	1557	D41	W40	W44	L5	L8	2.5
30	David Sundeen	1613	W48	L5	½	W40	L7	2.5
31	James Lemon	1327	L6	W43	L13	L19	W46	2.0
32	Chris Schmidt	1755	WF	W20	L6	L15	L17	2.0
33	James O'Neil	1248	L8	W49	L9	W36	L16	2.0
34	Joshua Song	833	L23	W39	L15	L24	W47	2.0
35	Adam Gaisinsky	1204	L2	W42	L27	W38	L18	2.0
36	Jade Ge	1121	L14	W53	L12	L33	W48	2.0
37	Sasha Konovalenko	1406	L1	L47	W48	W43	L19	2.0
38	Justin Wu	815	L20	Bye	L21	L35	W50	2.0
39	Ed Mandell	1288	L4	L34	W49	W47	---	2.0
40	Connor Linn	1049	D21	L29	W51	L30	L22	1.5
41	Jared Ge	916	D29	L44	W46	L18	L26	1.5
42	Ben Li	819	L3	L35	L19	Bye	D43	1.5
43	Stefano Lee	943	L10	L31	W53	L37	D42	1.5
44	John Ryskamp	1237	½	W41	L29	L28	---	1.5
45	Jonah Lowery	1415	½	L25	W50	L21	---	1.5
46	Walter Linn	648	½	---	L41	W50	L31	1.5
47	Arnav Nadgir	1009	L9	W37	L20	L39	L34	1.0
48	Justin Song	936	L30	L15	L37	W49	L36	1.0
49	Nathan Ouyang	865	L12	L33	L39	L48	W51	1.0
50	Saket Kulkarni	885	½	L13	L45	L46	L38	0.5
51	Alexander Boyd	764	½	---	L40	L22	L49	0.5
52	Rishi Shetty	906	L27	L17	½	---	---	0.5
53	John Brauker	1543	L22	L36	L43	---	---	0.0



Champion: Peter Chen



2nd Place: Zachary Smith
3rd Place: Arthur Huerta



1st U1800: Jacob Crandell
2nd U1800: Ricky Warnicke



2nd U1600: Jeannie Zhang
1st U1600: Lily Zhou



2nd U1400: Akash Narayanan
1st U1400: N. Konovalenko



1st U1200: Jack Li
2nd U1200: Robert Ellis



1st U1000: Joshua Song



Top Senior: Mike Skidmore



Top Junior: Nathan Hartwig

U1000 Section

No.	Name	Rating	Rd 1	Rd 2	Rd 3	Rd 4	Rd 5	Score
1	Daniel Britton	721	W32	W29	W11	W10	W3	5.0
2	Charlie Reese	550	W24	D8	W14	W20	W13	4.5
3	Joshua Lee	713	W34	W27	W12	W4	L1	4.0
4	Alexander Boyd	764	W28	W15	W5	L3	W10	4.0
5	Corin Tang	693	W37	W26	L4	W29	W11	4.0
6	Ari Bozann	751	L26	W39	W18	W21	W12	4.0
7	Sriamsha Dubbaka	621	W30	L21	W27	W26	W20	4.0
8	Ellington King	732	W33	D2	L23	W28	W22	3.5
9	Noah Burns	709	L31	W40	D28	W25	W24	3.5
10	Agniva Bhaumik	673	W40	W17	W13	L1	L4	3.0
11	Manish Karir	Unr	W38	W22	L1	W16	L5	3.0
12	Walter Linn	648	W25	W19	L3	W17	L6	3.0
13	Tai Karir	782	W18	W16	L10	W23	L2	3.0
14	Bryce Richardson	764	L27	W37	L2	W34	W23	3.0
15	Uma Sriram	613	W36	L4	L26	W31	W27	3.0
16	Emmanuel Richardson	612	W41	L13	W32	L11	W26	3.0
17	Michael Aldrich	590	W43	L10	W30	L12	W33	3.0
18	Parker Frye	550	L13	W41	L6	W37	W32	3.0
19	Jacob Gaisinsky	457	W44	L12	L22	W30	W29	3.0
20	Isaiah Manning	773	D23	W31	W21	L2	L7	2.5
21	Tobias Tang	283	W35	W7	L20	L6	D28	2.5
22	Sean McCormick	620	W42	L11	W19	D24	L8	2.5
23	Elanor Tang	535	D20	WF	W8	L13	L14	2.5
24	Samay Achar	Unr	L2	W34	W38	D22	L9	2.5
25	Jason Ouyang	257	L12	W33	D35	L9	W38	2.5
26	Bernard Williams III	464	W6	L5	W15	L7	L16	2.0
27	Samuel Weiss	500	W14	L3	L7	W36	L15	2.0
28	Jalen Sumlin	485	L4	W36	D9	L8	D21	2.0
29	Ciara McCotter-Tate	611	W39	L1	W31	L5	L19	2.0
30	Jamareia May	143	L7	W35	L17	L19	W37	2.0
31	Khushi Afre	355	W9	L20	L29	L15	W39	2.0
32	Kaden Thornton	416	L1	W43	L16	W38	L18	2.0
33	Phoenix Hollier	418	L8	L25	W42	W39	L17	2.0
34	Carrington Cheatem	392	L3	L24	W41	L14	W42	2.0
35	Julius Allbee	666	L21	L30	D25	D40	W43	2.0
36	Aryan Afre	120	L15	L28	Bye	L27	D40	1.5
37	Michael Zheng	348	L5	L14	W43	L18	L30	1.0
38	Cameryn Sumlin	604	L11	W42	L24	L32	L25	1.0
39	Kyle Frassetto	Unr	L29	L6	W40	L33	L31	1.0
40	Savonna Richardson	317	L10	L9	L39	D35	D36	1.0
41	Vineet Saravanan	Unr	L16	L18	L34	L42	Bye	1.0
42	Bryce Lapham	135	L22	L38	L33	W41	L34	1.0
43	Mikul Saravanan	Unr	L17	L32	L37	Bye	L35	1.0
44	Advait Vuppala	741	L19	LF	---	---	---	0.0



3rd Place: Joshua Lee 6th Place: Ari Bozann 7th Place: Sriamsha Dubbaka 5th Place: Corin Tang 4th Place: Alexander Boyd



2nd U600: Parker Frye 1st U600: Michael Aldrich



1st U400: Tobias Tang



1st Unrated: Manish Karir 2nd Unrated: Samay Achar



1st Place: Daniel Britton



2nd Place: Charlie Reese



ALL THE KING'S MEN CHESS AND BRAIN GAMES

An INVESTMENT in your FUTURE...and An INTERNATIONAL Language!



27170 DEQUINDRE ROAD, WARREN, MICHIGAN 48092 → (586) 558-4790 • (586) 558-2046 (Fax)
Home of UNIVERSAL CHESS CLUB



2013 MOTOR CITY OPEN



THANKSGIVING WEEKEND, FRI-SUN, NOV 29-DEC 1, 2013

4 SECTIONS • TOP SECTION FIDE-RATED • PRIZE FUND \$10,000 • 60 GP POINTS

SITE: Returning to New Detroit's **FABULOUS MOTOR CITY CASINO HOTEL**

2901 Grand River Ave, Detroit, MI 48201 • (313) 237-1589 (Directions, lodging below)



FORMAT

CO-SPONSORSHIP FROM MICHIGAN CHESS FESTIVAL, LLC. 6-SS (5-SS in U1000 Section). Sections: OPEN, U1800, U1400, U1000. OK to play up. Top Section FIDE-Rated. PRIZE FUND \$10,000! 80% Guaranteed per section! 60 Grand Prix Points! All Sections except Novice (U1000) have 2-Day & 3-Day Schedules. No Re-Entries in OPEN or U1000 Sections. Up to three 1/2-byes available (2 in U1000 Sect.); must be requested before start of RD. 4 (RD. 3 in U1000 Sec Sections merge after RD. 3. Unrated eligible ONLY for Overall prizes in ALL sections; can play any section. USCF and a STATE memberships required; can be purchased on site. Bring Board Pieces, Clocks! None provided, except for U1000 section; can be purchased from Book Vendor site. **ATULYA SHETTY LECTURE** on Sat, 5-6 p.m. (\$10).

STRICT RULES IN FORCE REGARDING HEADPHONE and CELL PHONE USE. RULES POSTED AT SITE!

TL	OPEN, U1800, U1400 Sections: 3-Day Schedule: Rds 1-4, G/120, d5; Rds 5-6, 40/120, d5, SD/30. 2-Day Schedule: Rds 1-3, G-40, d5; Rd 4, G/120, d5; Rds 5-6, 40/120, d5, SD/30. <u>U1000 Section</u> : 1-Day Schedule (Sat. Only): G-25.
EF	By Mon, 11/18; ADD \$10 after. AFTER 11/25, ADD \$20: <u>OPEN</u> : 3-DAY: \$113. 2-DAY: \$112. IM's and GM's Free (\$100 EF deducted from prize). NO RE-ENTRIES ALLOWED. <u>U1800</u> : 3-DAY: \$83. 2-DAY: \$82. Re-Entries: \$50. <u>U1400</u> : 3-DAY: \$63. 2-DAY: \$62. Re-Entries: \$40. <u>U1000</u> (1-Day Only): \$30.
RDS	OPEN, U1800, U1400: <u>3-Day</u> : Fri: 12, 6. Sat: 11, 6. Sun: 10, 3:30. 2-Day: Sat: 11, 1, 3, 6. Sun: 10, 3:30. U1000 Section (5-SS): Sat: 10:40, 12:20, 2, 3:30, 6.
REG	3-Day Schedule: Fri, 11/29, 9-11 a.m. 2-Day and 1-Day Schedules: Sat, 11/30, 8:30-10 a.m.
PRIZE FUND	\$10,000 OVERALL (80% Guar. b/50 each sect.). OPEN: \$4,400: 1st-2nd-3rd, \$1,500-\$900-\$600; TOP U2400, U2200, U2000, U1800/UNR: \$350 EACH. U1800: \$3,300: 1st-2nd-3rd, \$1,200-\$700-\$400; 1st-2nd, TOP U1600, U1400/UNR: \$300-\$200. U1400: \$2,300: 1st-2nd-3rd, \$700-\$500-\$300; 1st-2nd TOP U1200, U1000/UNR, \$250-\$150. U1000: Large Trophies for TOP 5 Overall and 1st-2nd TOP U800, U600, UNR. Medals to everyone in U1000 section scoring 3.5 pts or more! Biggest Upset in OPEN, U1800 and U1400 sections get choice of Mechanical or Quartz Clock! Chief Sr. TD: GM Ben Finegold; Asst Sr. TD: Dr. Ed Mandell. Bring Boards, Pieces, Clocks! None provided, except for U1000 section; can be purchased from Book Vendor on site.
DIR/ LODG	Motor City Casino Hotel, 2901 Grand River Avenue, Detroit, MI 48201, (313) 237-1589. Easy access to Grand River Exit from I-94, I-96, I-75 and M-10 (Lodge Freeway). For directions, go online to: http://www.mapquest.com . Reserve online at http://www.motorcitycasino.com OR call toll-free, 1-866-STAY-MCC (866- 782-9622). Ask for MCO Chess Rate \$119 (reg. \$249!) by Fri, Nov. 15th.
ENT/ INFO	Dr. Ed Mandell, (586) 558-4790. Cell (248) 635-2375). All The King's Men, 27170 Dequindre Rd, Warren, MI 48092. Fax (586) 558-2046. Email: allthekingsmench@aol.com .

2013 Michigan Bottom Half Class Championships

Crosstables and Pictures

Over 1900 Section

No.	Name	Rating	Rd 1	Rd 2	Rd 3	Rd 4	Rd 5	Score
1	FM David Sprenkle	2245	W12	W2	W8	D3	D4	4.0
2	Apurva Virkud	2063	W9	L1	W6	W8	D3	3.5
3	Anthony Nichols	2114	D13	W11	W5	D1	D2	3.5
4	Michael Chen	2162	W14	L5	W12	W9	D1	3.5
5	Ivan Wijetunge	1930	WF	W4	L3	D10	D8	3.0
6	Isaac Zylstra	1826	L8	W7	L2	W14	W13	3.0
7	Mandy Lu	1858	L10	L6	Bye	W12	W9	3.0
8	Peter Chen	1981	W6	W10	L1	L2	D5	2.5
9	Joshua Posthuma	1843	L2	W14	W11	L4	L7	2.0
10	Ricardo Lastra	2088	W7	L8	½	D5	---	2.0
11	Gary Pratt	1992	½	L3	L9	D13	W12	2.0
12	Jennifer Skidmore	1960	L1	W13	L4	L7	L11	1.0
13	Stanley Jarosz Jr	1900	D3	L12	L14	D11	L6	1.0
14	Daniel Libby	1903	L4	L9	W13	L6	---	1.0

Under 1900 Section

No.	Name	Rating	1	2	3	4	5	6	Score
1	Loren Schwiebert	1693	x	D	W	W	W	D	4.0
2	Evan Hawver	1767	D	X	D	W	D	W	3.5
3	Andrew Schremser	1742	L	D	X	D	W	W	3.0
4	Frederick Kung	1814	L	L	D	x	D	W	2.0
5	Soumya Kulkarni	1583	L	D	L	D	X	W	2.0
6	Brandon O'Neil	1721	D	L	L	L	L	x	0.5

Under 1700 Section

No.	Name	Rating	Rd 1	Rd 2	Rd 3	Rd 4	Rd 5	Score
1	Robert Savage	1606	W6	W3	W2	W4	W8	5.0
2	Surya Parasuraman	1592	W11	D4	L1	W5	W10	3.5
3	Jeff Futrell	1684	W9	L1	L5	W7	W4	3.0
4	Joy Chen	1617	W7	D2	W8	L1	L3	2.5
5	James Karakos	1554	W10	L8	W3	L2	D6	2.5
6	Michael Pappas	1423	L1	L9	Bye	W11	D5	2.5
7	Saano Murembya	1461	L4	D10	W11	L3	Bye	2.5
8	Nathan Metcalf	1505	½	W5	L4	D9	L1	2.0
9	James Mitchell	1558	L3	W6	D10	D8	L11	2.0
10	Ronald Grzegorzcyk	1646	L5	D7	D9	Bye	L2	2.0
11	Eric Haengel	1304	L2	Bye	L7	L6	W9	2.0

Under 1500 Section

No.	Name	Rating	Rd 1	Rd 2	Rd 3	Rd 4	Rd 5	Score
1	Kyle Schwiebert	1399	W8	W4	D6	W2	W3	4.5
2	Erica Forshaw	1425	W10	W5	W3	L1	W7	4.0
3	Patrick Kinnicutt	1440	W11	W6	L2	W4	L1	3.0
4	Karthik Vuyyuru	1431	W12	L1	W11	L3	W5	3.0
5	Christoph Hausner	1474	W7	L2	½	W6	L4	2.5
6	Ruben Ramon	1420	W9	L3	D1	L5	W11	2.5
7	Robert Vasey	1397	L5	D10	W8	W9	L2	2.5
8	Gary Ugrinovskyi	1177	L1	W12	L7	W11	L9	2.0
9	Dalip Singh	1300	L6	L11	Bye	L7	W8	2.0
10	Paul Saliterman	1309	L2	D7	W12	---	---	1.5
11	Eric Zhong	1338	L3	W9	L4	L8	L6	1.0
12	John Ryskamp	1311	L4	L8	L10	---	---	0.0

Under 1300 Section

No.	Name	Rating	Rd 1	Rd 2	Rd 3	Rd 4	Rd 5	Score
1	Charles Cassidy	1287	L3	W7	W5	D2	W6	3.5
2	James O'Neil	1213	D8	W5	W3	D1	L4	3.0
3	Christian Hausner	1130	W1	W6	L2	W8	L5	3.0
4	Leah Ziegler	1246	L5	D8	W7	D6	W2	3.0
5	Arjun Bajaj	1035	W4	L2	L1	L7	W3	2.0
6	Larry Hodge	1228	W7	L3	D8	D4	L1	2.0
7	Feng Zhong	1025	L6	L1	L4	W5	W8	2.0
8	Aditya Gude	893	D2	D4	D6	L3	L7	1.5

Under 1100 Section

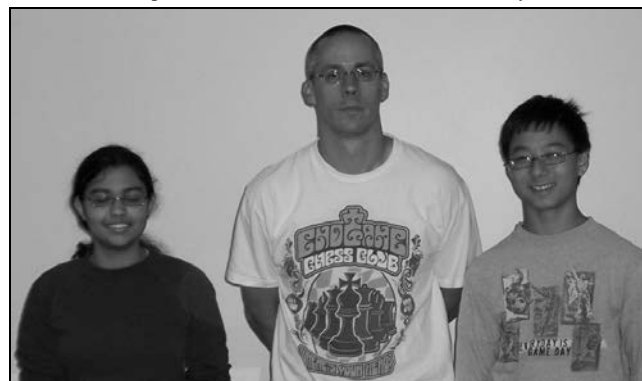
No.	Name	Rating	Rd 1	Rd 2	Rd 3	Rd 4	Rd 5	Score
1	Theodore Gregg	1072	W9	W2	W6	W5	D3	4.5
2	Yashwant Dubbaka	821	W16	L1	W9	W6	W5	4.0
3	Sriamsha Dubbaka	621	W11	W7	L5	W13	D1	3.5
4	Aditya Bajaj	538	W10	L6	W11	D7	W8	3.5
5	Saket Kulkarni	885	W12	W13	W3	L1	L2	3.0
6	Alexander Boyd	742	W14	W4	L1	L2	W11	3.0
7	Hersh Singh	911	D8	L3	W12	D4	W10	3.0
8	Luke Hausner	458	D7	L9	W16	W12	L4	2.5
9	Aradh Kaur	429	L1	W8	L2	L10	W15	2.0
10	Daniel Rojas	Unr	L4	W14	L13	W9	L7	2.0
11	Gregory Apkarian	Unr	L3	W16	L4	W14	L6	2.0
12	Michael Lu	388	L5	W15	L7	L8	W13	2.0
13	Julius Allbee	666	W15	L5	W10	L3	L12	2.0
14	Emily Kinnicutt	154	L6	L10	W15	L11	W16	2.0
15	Bryce Lapham	135	L13	L12	L14	W16	L9	1.0
16	Isonga Murembya	240	L2	L11	L8	L15	L14	0.0



Over 1900 Champion:
FM David Sprenkle



U1900 Champion: Loren Schwiebert
U1500 Champion: Kyle Schwiebert



Over 1900 Section, Tied 2nd Place & Top U2100
Apurva Virkud Tony Nichols Michael Chen



Over 1900 Section, Tied U2000
Mandy Lu Isaac Zylstra Ivan Wijetunge



U1700 Champion: Robert Savage



Top U1600: Surya Parasuraman



U1300 Champion: Charles Cassidy



U1100 2nd Place: Yashwant Dubbaka
U1100 Champion: Theodore Gregg



Top U1800: Evan Hawver



Top U1200: Christian Hausner



Top U900: Aditya Bajaj
Top U1000: Sriamsha Dubbaka



Top U500: Aradh Kaur
Top U700: Luke Hausner

Loren Schwiebert (1693)
Andrew Schremser (1742)
Michigan Bottom Half Class U1900 (4)
Comstock Park, MI
June 2013
Notes by Loren Schwiebert

Andrew and I have never played before, but Andrew played my son, Kyle, last year in the U1300 section, which shows how rapidly he has improved. This was the fourth game of the tournament. I was leading the section by just a half point ahead of Andrew and Evan, who had drawn their game with each other in the third round.

1.e4 e5 2.Nf3 Nc6 3.d4 exd4 4.Nxd4 Qh4

The Steinitz Variation of the Scotch Game. With this move, Black wins the e-pawn but White gets compensation due to a lead in development and the Black King being stuck in the center. Of course, White has to prove adequate compensation for the pawn.

5.Nc3 Bb4 6.Be2 Qxe4 7.Ndb5 Ba5?

Black wants to prevent Nxc7+ but 7...Kd8 is required.

8.Nxc7+

Black is objectively lost, but still manages to generate some dangerous counterplay.

8...Kd8

8...Bxc7 allows 9.Nxe4

9.Nxa8 Bxc3+

After the game, we looked at Nd5, but O-O breaks both pins.

10.bxc3 Qxg2

Grabbing another pawn may seem risky given Black's backward development, but this is a sensible choice to complicate the position. "Normal" moves just allow White to castle.

11.Bf3 Qg6 12.Ba3

The computer prefers 12.Bf4 but I thought that with the Bishop on the a3, it would be harder for Black to develop his kingside.

12...Nf6 13.Kf1 b6

A tricky move. The Nc6 is hanging, but Bxc6 loses all of White's advantage and allows Black at least a draw after, for example, Bxc6 Ba6+ c4 Bxc4+ Ke1 13...Re8 Kd2 14.Be2 Qg1+ Qh6+.

14.Rg1 Qh6 15.Rg2 Bb7 16.Qd6

Now White has too many threats and will either checkmate soon or win more material.

16...Bxa8 17.Bxc6 Bxc6 18.Qb8# 1-0

Evan Hawver (1767)
Loren Schwiebert (1693)
Michigan Bottom Half Class U1900 (5)
Comstock Park, MI
June 2013
Notes by Loren Schwiebert

1.e4 c6 2.d4 d5 3.e5 Bf5 4.Nd2 e6 5.g4 Bg6 6.h3 f6 7.Ngf3 Nd7 8.Nb3 fxe5 8...Qc7 and castling Queenside before attacking White's center looks better although the computer thinks the position is equal.

9.Nxe5 Be4 10.Rg1 Ngf6 11.Be3

11.f3 Bg6 12.Nxg6 hxg6 13.Bd3 and Black has to play 13...Kf7 to save the pawn on g6.

11...Nxe5 12.dxe5 Nd7 13.f4 g5 14.Qd2 Bh6

Playing 14...gxf4 immediately and then Bg7 to attack the isolated e-pawn was stronger.

15.0-0-0 gxf4 16.Bxf4 Bxf4 17.Qxf4 Rf8 18.Qh6 Qe7 19.Nd4

I overlooked this obvious move. 19.Na1 the game is even again once we exchange e pawns.

19...Nxe5 20.Qxe6 Rf6 21.Qxe7+ Kxe7 22.Bd3

22.Bg2 would be a better way to offer to trade minor pieces, since White ends up with a better pawn structure.

22...Nxd3+ 23.cxd3 Bg6 24.Rde1+ Kd7 25.Nf5 Bxf5 26.gxf5 Raf8 27.Rg7+ R8f7 28.Rxf7+ Rxf7 29.Rf1 Kd6 30.d4 c5

Black would have some winning chances with the stronger plan of 30...Ke7 with the idea of using the king and rook to win the f-pawn.

31.dxc5+ Kxc5 32.Rf4 Kd6 33.Rh4 []

Somewhere around here White offered a draw. I'm not sure why I didn't accept since I have only an insignificant advantage.

33...Ke5 34.Rh5 Ke4 35.Kd2 Rxf5 36.Rxh7 Rf2+ 37.Kc3 d4+ 38.Kc4 b5+ 1/2-1/2

Here I offered a draw as it looked like most of the pawns were coming off the board.

Kyle Schwiebert (1399)

Erica Forshaw (1425)

Michigan Bottom Half Class U1500 (4)

Comstock Park, MI

June 2013

Notes by Loren Schwiebert

This ended up being the critical game of the section, as these two players finished first and second in the section. At the start of this round, Erica was leading the section with 3.0 and Kyle was in second with 2.5 out of 3 points.

1.e4 c5 2.Nf3 d6 3.d4 cxd4 4.Nxd4 Nf6 5.Nc3 g6 6.Bc4 Bg7 7.f3 0-0 8.Be3 Nc6 9.Qd2 Bd7 10.0-0-0 Rc8 11.h4? h5?

Both players miss the threat. The Bc4 is loose. 11...Nxd4 wins a piece after 12.Qxd4 Ng4 so White has nothing better than 13.Bxf7+ Rxf7

12.Bh6 Nxd4 13.Bxg7 Nxf3

Showing good attacking instincts, but this doesn't quite work because of White's next move.

14.Qh6 Nh7 15.Bxf8

15.Bb3 with the idea of Qxg6 is even stronger.

15...Qxf8 16.Qxf8+

16.Qxg6+ exploiting the pin on the f7 pawn is again stronger, so Black should play Nxf8 instead of Qxf8.

16...Kxf8 17.gxf3

17.Bd5 with the threat of Bxb7 keeps White's advantage. After the exchange of these two minor pieces, White has only a slight advantage of rook for bishop and pawn.

17...Rxc4 18.Nd5 Rc5 19.Rd3 Bb5

20.Rc3 Rxc3 21.Nxc3 Bc6 22.Rd1 Nf6 23.Nd5 Nxd5 24.exd5 Bb5

White has an advantage, but this is not an easy endgame to win.

25.Rd2 Ke8 26.b3 b6 27.c4 Bd7 28.Kb2 Bf5 29.Kc3 Kd7 30.Kd4 e5+ 31.dxe6+ fxe6 32.f4 Kc6 33.b4 Bg4 34.a4 d5

Although the position is difficult to hold, it would be better to retreat the king and try to the lines closed. Moving the pawn gives White the option to trade pawns on 34...d5 and opens lines for White's rook and king.

35.c5 bxc5+ 36.bxc5 Bf5 37.Rb2 Bg4 38.a5 Be2

Black makes an unfortunate blunder, but the position is already lost.

39.Rxe2 1-0

Patrick Kinnicutt (1440)

Kyle Schwiebert (1399)

Michigan Bottom Half Class U1500 (5)

Comstock Park, MI

June 2013

Notes by Loren Schwiebert

1.e4 c5 2.Nf3 Nc6 3.Bc4 g6 4.d3 Bg7 5.c3 e6 6.Be3 d6 7.0-0 Nge7 8.Qd2 0-0 9.Bh6 a6 10.a4 Bd7 11.Bxg7 Kxg7 12.Qf4 e5 13.Qh4 Na5 14.Nbd2 b5 15.axb5 axb5 16.Bd5 Nxd5 17.Qxd8 Rfxd8 18.exd5 Bf5 19.Ne4 Bxe4

19...c4 undermines the knight's support and wins the d-pawn.

20.dxe4 Nb3 21.Rxa8

Trading on the a-file gives Black control of the only open file and ties White's rook to the defense of the b-pawn.

21...Rxa8 22.g3 Ra2 23.Rb1 h6 24.Kf1 f5 25.exf5 gxf5 26.Ke2 c4 27.Ne1 e4 27...b4 bxc3 c3 threatening Nd2 and cxb2 causes more problems for White.

28.Nc2 Kf6 29.Nb4 Ra8 30.Ke3 Nc5 31.Nc6 Nd3 32.Nd4 b4

Black finds the right idea this time.

33.Nb5 bxc3

33...Rb8 first is decisive, as 34.Nxd6 bxc3 and White will have to give up his rook for the pawn.

34.Nxc3 Rb8 35.f3 exf3 36.Kxf3 Rxb2 37.Rxb2 Nxb2

Botvinnik's principle: knight endings are really pawn endings. In this position, the extra pawn should be a decisive advantage.

38.h4 h5 39.Ke3 Ke5 40.Kd2 Nd3 41.Ke3 f4+ 42.gxf4+ Nxf4 43.Kf3 Nxd5 0-1

Black resigned, as the position is hopeless after losing the second pawn.

Michigan Chess Clubs

Bay City Chess Club Tue 8:00am-4:00pm; Bay City Mall food court, 4101 E. Wilder Rd.; Mike Snobeck (989) 686-8001

Benton Harbor, Solid Grounds Cafe Chess Club Thur 6:30-9:00pm; Solid Grounds Cafe, 124 Water Street, Benton Harbor, MI; 49022 "in the Arts District"; Carl Brecht e-mail: carlbrecht@netscape.net; *All ages welcome! Hours of cafe for play anytime at www.Solid-groundsCafe.com*

Cadillac Chess Club Wed 6:00-10:00pm; Horizon Books, 115 S. Mitchell; Terry Oss (231) 775-6143 or Duane Croel (231) 885-1249

Canton, Carrel Chess Club Thu 6:00-9:00pm, and as needed for tournaments; Westland Library, 6123 Central City Parkway, Westland, MI 48185; Michael Carrel (734) 377-4907 ; <http://carrelchessclub.webs.com/>

Dearborn, Ford Chess Club Tue 5:00-8:00pm; Ford Motor Co World Headquarters Cafeteria; North Entrance, Michigan Ave & Southfield Fwy; Norm Haygood (248) 366-0954; George Oprean (586) 756-4967; e-mail: nhaygoodjr@aol.com or Archangel365@comcast.net

Detroit City Chess Club Fri 5:00-9:00pm; Detroit Institute of Arts (DIA), 5200 Woodward Ave., Detroit, MI 48202; Kevin Fite kevin@fite.com; Sherman Redden (313) 657-2268; redden@detroitcitychessclub.com; <http://www.detroitchessclub.com>

East Lansing Chess Club Tues 1pm-4pm, Fri 10am-3:30pm; East Lansing Seniors Program, 819 Abbott Road; karndt@ci.east-lansing.mi.us (517) 337-1113; Mervin J. Draper; e-mail: pjdbad@aol.com

Elkhart County Chess Club Tue 7:00-10:00pm; First Congregational Church, 3rd & Marion St. in downtown Elkhart, IN ~ 7 miles south of State line; Roger Blaine (574) 257-9033 e-mail: reblaine@hotmail.com

Genesee County Chess Club (Flint) Tue 6:30-9:30pm; Eastside Senior Citizens Center Activity Room, 3065 N. Genesee Rd; Flint, MI 48506; Jeff Aldrich (810) 955-7271 e-mail: jeffchess@charter.net

Grand Rapids Area Chess Club Tue 7:00-10:00pm; Common Ground Coffee, 1319 Fulton E, Grand Rapids; Katy Ford (616) 240-0832; e-mail: katymford@sbcglobal.net

Greenville Chess Club Thu 6:30-8:30pm; Greenville Area Community Center, 900 East Kent Rd; Robert Wilson (616) 754-9163 e-mail: gacc@oneisp.net; *All levels welcome. No cost to participate. Come have fun!*

Grosse Pointe Chess Club Tue, 7:30-10:00pm; Downtown Borders, 17141 Kercheval St, North of Cadieux; Tim Kuhn (313) 884-0118 e-mail: timkuhn@yahoo.com

Calvary Knights Chess Club Sat 2:00-5:00pm; Calvary United Methodist, 15010 North Holly Rd, Holly, MI 48442; David Crutcher (248) 942-4904; e-mail: dcrutche@hotmail.com; <http://calvaryknights.webs.com/>

Holland Chess Club (interschool scholastic chess club) Sat 9:30-11:00am; Eagle Crest Charter Academy, 11950 Riley St, Holland; David Posthuma (616)283-7703 davep@echurchessential.com; Website: www.hollandchessclub.com

Jackson Chess Club Thu 7:00pm; Cottage Inn Pizza, 1208 W. Michigan Ave.; Lineas Baze (517) 788-6324 e-mail: zalmon@prodigy.net; *All ages and ratings welcome, from novice to expert. No dues or fees for membership. Rated and unrated games available.*

Kalamazoo Chess Club Sun 3:00pm; Bigby's Coffee Shop, 6800 S. Westnedge Ave., Portage, MI, 49002 Tim McGrew e-mail: timothy.mcgreg@wmich.edu

Kalkaska, Cherry Street Elementary Chess Club; Wed 3:00-4:00pm; Cherry Street Elementary, 315 South Cherry St; Rich Hilts e-mail: wizerman@hughes.net; Website: www.mrhiltsclass.com/chess_club.htm

Kentwood Chess Club; Hours of the bookstore: Mon-Sat 9:00am-10:00pm, Sun 10:00am-7:00pm.. Schuler Books & Music 2660 28th St SE Grand Rapids, MI 49512. It meets in the café area on Tue, Wed, & Fri from 6-10pm. Antowine Jordan e-mail: pilot_cougar_chess@live.com

Lansing Chess Club Wed 6:00 - 10:00 PM; Room 127, LCC Technology and Learning Center, NE corner of Capitol and Shiawassee. Tuesdays, 6:00 - 8:00 PM; Gone Wired Cafe, 2021 East Michigan Ave; David Sundeen (517) 394-8080; Tony Nichols e-mail:sensie48910@yahoo.com; <http://www.lansingchessclub.blogspot.com>

Livingston County Chess Club Mon 6:00-9:45pm; Hartland Senior Center, 9525 E. Highland Rd (M-59),Howell, MI 48843, ¼-mile west of US-23; Ken Lamb (810)-599-4134; Matt Trujillo (810)-225-3000; Website: <http://www.livingstoncountychessclub.blogspot.com/> Email: livingstoncountychessclub@hotmail.com or lcchess@yahoo.com

Livonia Chess Club Wed 12:00-5:00pm; Senior Citizens Bldg, SE Corner of Five Mile Rd & Farmington Rd; George Geominne; e-mail: geologoe@twmi.rr.com; Bob Mekus (313) 592-1450

Marquette Chess Club Thur 7:00pm; Masonic Building, 128 West Washigton St; Tom Hogan (906) 869-1719

Mesick Public Library Chess Club Thu 3:00-5:00pm; 207 North Eugene Street, Mesick, MI 49668; Greg Bailey or Duane Croel (231) 885-2604

Midland Chess Club Mon 7:00pm (Sep-May); Midland High School Rm 245, 1301 Eastlawn; John Warner (989) 839-8290

Muskegon Chess Club Mon & Thur, 7:00 - 10:00 PM; Barnes & Noble Bookstore (in cafeteria), 5275 Harvey St., Muskegon, MI; Steve Dumas (231) 798-2968 e-mail: stevedumas1@comcast.net; *Minimum age: 10*

Oak Park Chess Club Thu 6:30-10:30pm; Oak Park Community Center, 14300 Oak Park Blvd. (9.5 Mile, west of Coolidge) (248) 691-7555

Petoskey Chess Club Tue 7:00-10:00pm; Horizon Books, 319 E. Mitchell St., Petoskey; Dave Mitchell (231) 548-1478

Port Huron Chess Club Thu 6:30-10:00pm (except holidays); Palmer Park Recreation Center, 2829 Armour St, Port Huron, 48460; Lon Rutkofske (810) 388-9219 e-mail: ishking@aol.com; Website: <http://porthuronchessclub.yolasite.com/>

Redford Chess Club Fri 2:30-4:30pm; Thurston High School, 26255 Schoolcraft; Eric Nelson (313) 535-4000 x1110 e-mail: nelser01@southredford.net

Saint Clair Saturday Chess Club Sat 9:00am-12:00pm Burger King, Corner of Clinton and River Rd; Jaime Chan (810) 326-3745 e-mail: jaime@saturdaychess.com; Website: www.saturdaychess.com

Saint Joseph Chess Club Wed 6:00-8:00pm; Saint Joseph Public Library, 500 Market St; Tony Palmer (269) 982-5128

Sault Ste. Marie, Sugar Island Chess Klub Thu 7:00pm; Hilltop Bar, 5389 E 1 1/2 Mile Road, Sugar Island; Glen Schmiede (906) 635-5791, e-mail: gschmiede@nodinwifi.com

South Bend Chess Club (Indiana) Thu 7:00-10:00pm; Meijer Store, 5020 Grape Rd, Mishawaka, IN ~4 Miles south of State line. Grape Rd 1/4 Mile South of Douglas Rd. Roger Blaine (574) 257-9033; e-mail: reblaine@hotmail.com

Spring Lake District Youth Chess Club (Ages 8-18) 2nd Mon 4:00-5:30pm; Spring Lake District Library, 123 E. Exchange St; Lisa Donner: (616) 846-5770 x107

Taylor, Downriver Chess Club Sun 3:00pm to close; Fuddrucker's Restaurant, 14680 Pardee; Terrence Price (734) 462-1181 e-mail: tepace24@hotmail.com

Troy Chess Club (casual chess) Thur 6:30-10:15pm; Troy Community Center, 3179 Livernois Ave., Troy (248) 524-3484 (I-75 exit 69, east on Big Beaver Rd 1/4 mile to Livernois. U-turn. 1 Block N of Big Beaver, W. of Livernois.) Don Mailing: (248) 391-2940

Troy Youth All-Star Chess Club Sat 3:00-5:00pm; Troy Community Center -3179 Livernois Rd, Troy, MI 48083 The club is open to any K-12 students who are interested in improving his/her chess skills. Come in and have fun!

Club information: <http://games.groups.yahoo.com/group/TYASCC/> Feng Zhong, xyzf99@yahoo.com (248) 825-6192 Chris Hausner, chausner_mi@yahoo.com (313) 575-5617

Traverse City Chess Club Wed 6:00-11:00pm; Horizon Books, 243 E Front St, Traverse City; Joe Revnell (231) 633-1323

Universal Chess Club Mon-Sat 12:00-6:00pm, Sun 12:00-5:00pm; 27170 Dequindre (just north of 11 mile in Parkview Square strip Mall, around back); Ed Mandell (586) 558-4790 e-mail: allthekingsmench@aol.com; Website: www.allthekingsmenchess.com; *All Ages/strengths welcome! Sets provided; clocks for rent. Snacks & beverages are available.*

Michigan Chess Tournament Calendar

September/October 2013

All events require USCF and MCA memberships, and are No Smoking, No Computers unless otherwise stated. Memberships can be purchased at any tournament. Other state memberships are acceptable for non-Michigan residents. Please send your tournament announcements via e-mail to jeffchess@charter.net. **PLEASE NOTE!** Events listed are a service of MCA. MCA is in no way responsible for cancellations or changes. Be sure to always contact your organizer!

SEPTMEBER TOURNAMENTS:

Sep 13 FRIDAY KNIGHT ACTION QUADS! #79

Note that the Sep 6 event has been cancelled.

Contact Jennifer directly for location. **3-RR** Quads by rtg. **Reg:** 6:30-6:50pm **Rds:** 7-8-9pm. **EF:** \$8 by 5:00pm day of tourney, \$10 at the door, \$15 if paid after 6:50pm. **TL:** G/30 (G/25;d5). **\$\$:** \$16/quad. **Ent/Info:** Jennifer Skidmore 734-678-0463, jmscamelot@gmail.com

Sep 9 UNIVERSAL MONTH-LONG SWISS

All the King's Men Chess Supplies, 27170 Dequindre Road, Warren in Parkview Square Strip Mall. **Ent&Info:** Ed Mandell, 27170 Dequindre Road, Warren, MI 48092 (586) 558-4790, Fax (586) 558-2046, E-mail allthekingsmench@aol.com

Sep 10 Genesee County C.C. Blitz Extravaganza!

Eastside Senior Citizens Center Activity Room. 3065 N. Genesee Rd, Flint. **2RR**, Sections of 6-8 by Rating. Not Rated, No Memberships Required. **TL:** G5 (no delay). **Rds:** Start at 6:30pm. **EF:** \$1 **REG:** 6:00-6:25pm **\$\$:** \$5/Section. **Ent/Info:** Jeff Aldrich, (810) 955-7271, jeffchess@charter.net

Sep 13-15 UNIVERSAL MIDWEST FALL SWISS

See Page 12 for More Details

Super 8 Stevensville Hotel, 4290 Red Arrow Hwy, Stevensville, MI 49127, (269) 429-3218, **HR:** \$50 by 9/6, 1-800-741-5072, online: <http://hotelreservations.com>, search Stevensville, scroll down to Super 8 Stevensville Hotel. **5-SS**. 3 Sections: OPEN, U1800, U1400. 2-Day and 3-Day Sched. OPEN Section FIDE-Rated. **TL:** 3D G/120; d5. 2D Rds. 1-2, G/45; d5, Rds. 3-5, G/120; d5. **Rds:** 3D: Fri: 7pm. Sat 11:30-4:00. Sun 10-2:30; 2D Sat 11:30, 2:00, then merge. Up to 2 half-pt byes, req prior to rd 3. **EF:** Adv by 9/10 (add \$10 after): Open: 3D \$63, 2D \$62, IM/GM Free (\$50 EF deduct); U1800: 3D \$53, 2D \$52; U1400: 3D \$43, 2D \$42. **Reg:** 3D Fri 5:00-6:15pm; 2D Sat 8:30-9:30am. **\$\$:** \$2,650 (base 24/sect, min 6/group, 65% Gtd); Open: \$350, \$225; Top X/A/U1800: \$175 ea; U1800: \$300, \$175; Top B/C/U1400: \$125 ea; U1400: \$700: 1st, 2nd: \$250, \$150. Top D, E, U1000: \$100 ea. **Ent/Info:** Dr. Ed Mandell, 27170 Dequindre Road, Warren, MI 48092, (586) 558-4790, Fax (586) 558-2046, Email: allthekingsmench@aol.com

Sep 20-22 HAROLD STEEN MEMORIAL CUP

See Page 5 for More Details

Hampton Inn & Suites, 36400 Van Dyke, Sterling Hts. Sponsored in part by Michigan Chess Festival, LLC! **HR:** \$89 by 9/13, (586) 276-0600 Ask for Steen Cup Rate. **6-SS (4-SS Nov)**. 3 Sect: Open, Reserve (U1700), Novice (U1000). Open/Rsv: 2-Day & 3-Day Sched, merge after rd 2; Up to 3 half-point byes, req prior to rd 4; Nov: 1-Day only. **TL:** Open/Rsv: 3D Rd 1-4 G/90, Rd 5-6 G/120; 2D: Rd 1-2 G/45, Rd 3-4 G/90, Rd 5-6 G/120; Nov: 1D G/30. **Reg:** Open/Rsv: 3D Fri 5-6:15pm; 2D Sat 8:30-9:30am; Nov: 1D Sat 8:30-10:00am. **Rds:** 3D Fri: 7pm, Sat: 10:30-2:30-6, Sun: 10-2:30; 2D Sat: 10:30-12:30, then merge; 1D Sat 11-1-2:30-4. **EF:** Adv by 9/17 (add \$10 after); Open: 3D \$53, 2D \$52, IM/GM Free (\$50 EF deduct); Reserve: 3D \$43, 2D \$42; Novice: \$25. **\$\$:** \$1750 (base 30/sect, min 6/group, 80% Gtd); Open: \$350, \$200, Top 1900-2199, 1700-1899, U1700/Unr \$150 ea; Reserve: \$275, \$175, Top 1400-1599, 1200-1399, U1200/Unr \$100 ea. **Ent&Info:** Ed Mandell, 27170 Dequindre Road, Warren, MI 48092 (586) 558-4790, Fax (586) 558-2046, E-mail allthekingsmench@aol.com

Sep 22 CANTON SUNDAY QUADS

Canton Public Library, 1200 South Canton Center Rd, Canton, MI 48188. **3-RR**. **TL:** G/30 (G/25;d5). **Rds:** 1pm-2:30pm-4pm. **EF:** \$6 by PayPal only. **Reg:** 12:30am-1:00pm. **\$\$:** \$15 per quad. **ENT&INF:** Tim Heller (chessclub@wowway.com) or Manmohan Das (mrwiz.usa@gmail.com)

Sep 24 Genesee County C.C. Free Rated Swiss

Eastside Senior Citizens Center Activity Room. 3065 N. Genesee Rd, Flint. **2RR**, Sections of 6-8 by Rating. Not Rated, No Memberships Required. **TL:** G5 (no delay). **Rds:** Start at 6:30pm. **EF:** \$1 **REG:** 6:00-6:25pm **\$\$:** \$5/Section. **ENT&INF:** Jeff Aldrich, (810) 955-7271, jeffchess@charter.net

Sep 28-29 ★★2011 MICHIGAN SENIOR CHAMPIONSHIPS★★

See Page 18 for More Details

Eastside Senior Citizens Center, 3065 N. Genesee Rd, Flint, MI 48506. South entrance off Genesee Road, just south of Richfield Rd. Community Center is straight back off of Genesee Rd. **4-SS / 2 Sections**, Must be 50 years old by 12/31/2013, Open and Reserve (U1600). One ½-point bye allowed in rds 1-3, must be requested prior to rd 2. **TL:** G/135. **Rds:** 10:00am - 3pm both days. **EF:** \$20 by 10/7, On-site: \$25. **Reg:** Sat 9-9:45am. **\$\$:** Open: 1st \$75 + Trophy, 2nd & U1800: Trophy; Reserve: 1st: \$50 + Trophy, 2nd & U1400: Trophy. **ENT&INF:** Jeff Aldrich, 7453 Whippoorwill Ln, Davison, MI 4842, (810) 955-7271, jeffchess@charter.net

OCTOBER TOURNAMENTS:

Oct 4 FRIDAY KNIGHT ACTION QUADS! #80

Contact Jennifer directly for location. **3-RR** Quads by rtg. **Reg:** 6:30-6:50pm **Rds:** 7-8-9pm. **EF:** \$8 by 5:00pm day of tourney, \$10 at the door, \$15 if paid after 6:50pm. **TL:** G/30 (G/25;d5). **\$\$:** \$16/quad. **Ent/Info:** Jennifer Skidmore 734-678-0463, jmscamelot@gmail.com

Oct 12 Chess, Chess960, and More

Warriors 3 Game Store, 35613 W Michigan Ave, Wayne, MI 48184. **4-SS** (Non standard pairings will be used.), Rated and unrated sections

Also a Chess960 section if sufficient interest. After tournament: Bughouse, Chess Variants, and other games. **Reg:** 12-12:45

Rds: 1-2-3-4pm. **EF:** \$5, USCF Cat 1 & Above Free. **TL:** G/25;d5. **\$\$:** Medals to top 3 in each round. **Ent/Info:** David Lame, dave@gamesinmichigan.com, 248-543-1930, Website: <http://gamesinmichigan.com/warriorschess>

Oct 15 – Nov 12 Genesee County C.C. Club Championship

Eastside Senior Center, 3065 N. Genesee Rd. Flint, MI 48506. **5-SS**, 1/gm/wk, Up to 2 half-point byes in rds 1-4. Please arrive by 6:25pm each week to be paired. **Reg:** 10/15 or 10/22, 6:00-6:25pm. **Rds:** 6:30/wk. **EF:** \$8 (\$6 U18) **TL:** G/90;d5. **\$\$:** 1st, 2nd, 3rd; Top U1800, U1600, U1400, U1200, U1000/Unr. **ENT&INF:** Jeff Aldrich 810-955-7271, jeffchess@charter.net

Oct 23-27 Third Annual Fall Festival

Presented by Michigan Chess Festival LLC, Adoba Hotel, 600 Town Center Dr, Dearborn, MI 48126. 3 Sections (Norms Possible 9 Round FIDE Rated, 5 Round Weekend Swiss, & U1000 One Day 5 Round Swiss)

See the Back Page for More Details Registration at www.onlineregistration.cc

Oct 27 CANTON SUNDAY QUADS

Canton Public Library, 1200 South Canton Center Rd, Canton, MI 48188. **3-RR**. **TL:** G/30 (G/25;d5). **Rds:** 1pm-2:30pm-4pm. **EF:** \$6 by PayPal only. **Reg:** 12:30am-1:00pm. **\$\$:** \$15 per quad. **ENT&INF:** Tim Heller (chessclub@wowway.com) or Manmohan Das (mrwiz.usa@gmail.com)

PLAN AHEAD CALENDAR:

Nov 3 Troy Youth All-Star CC Action Quads

Troy Public Library, 510 W. Big Beaver. Troy, MI 48084. **3-SS**. **Reg:** 1pm for Payment. Advance only via e-mail/text. NO on-site registrations. **Rds:** 1:30-2:30-2:30. **EF:** \$5 by 8/23, \$10 on 8/24 **TL:** G/30 (G/25;d5). **\$\$:** 1st \$10, 2nd \$6 each quad. **Ent/Info:** TYASCC-owner@yahoo.com, 248-825-6192

Nov 29 – Dec 1 Motor City Open

Motor City Casino Hotel, Detroit. See Page 21 for More Details

Dec 15 Troy Youth All-Star CC Action Quads

See Nov 3 Listing

Jan 11-12, 2014 ★★ 2014 MICHIGAN MASTER/EXPERT & CLASS CHAMPIONSHIPS Lansing

Online Registration for MCA Events:

www.onlineregistration.cc (scroll down to find Michigan Chess Association)

Online Registration for Chess Championships
Online Chess Tournament Registration with Credit Cards/PayPal

Powered By: Chess.MN, Ceylon Chess Club

OnlineRegistration.CC

Welcome to the first ever fully-featured state of the art Online Registration System for Chess Championships in USA. Some of the advanced features supported by our system are:

1. List of currently available tournaments with advanced search/filtering options.
2. Interactive search of USCF and FIDE IDs/Ratings when completing player profiles or entering player information for a particular tournament.
3. Ability to store multiple player profiles in a single account for easy retrieval and use in tournament registrations.
4. Comprehensive support for maintenance of user accounts with purchase history, multiple player profiles, individual player tournament history, etc.
5. Ability to register multiple players in multiple tournaments with a single transaction, in a true user friendly e-commerce environment.
6. Ability to purchase USCF memberships together with tournament registration transactions.
7. Exceptional support for tournament organizers for handling various types of tournaments (FIDE rated, Multiple schedules, Multiple sections, Multiple discounts, etc) together with support for comprehensive report generation through a selected set of backend tools.

Tournament Organizers:
Please contact us if you are interested in using our state of the art Online Registration System.

Advance Tournament Search:

MICHIGAN CHESS ASSOCIATION
PAUL KANE
P.O. BOX 458
SOUTH LYON, MI 48178
RETURN SERVICE REQUESTED

NON PROFIT
ORGANIZATION
U.S. POSTAGE PAID
Flint, MI
Permit No. 39

TIME DATED MATERIAL PLEASE EXPEDITE



Michigan Chess Festival LLC

Third Annual Fall Festival, **NORMS POSSIBLE 9 ROUND FIDE RATED**
October 23-27, 2013 Adoba Hotel, Dearborn, Michigan
Entry fees waived for GMs, and IMs/WGMs from outside USA*

Entry fee: \$225 before October 1. \$250 between October 1, and October 16, \$300 after October 16. Registration will close on October 23 at 5:30 p.m. to allow the TD ample time to "pair" the first round.

Open to players with FIDE titles, USCF over 2199, FIDE over 2100, and a limited number of talented junior players.

Time control: 40/90, SD/30, increment 30 seconds per move.

PRIZES:

1st: \$4,500. 2nd: \$2,500. 3rd: \$1,500. 4th: \$800. 5th: \$500. 6th: \$200

U2400: 1st \$1,000, 2nd: \$500 U2250: 1st: \$500

ROUNDS

Wednesday, October 23: 1st round: 6:30 p.m. Thursday, October 24: 2nd round: 11:00 a.m. 3rd round: 6:00 p.m.

Friday, October 25: 4th round: 11:00 a.m. 5th round: 6:00 p.m. Saturday, October 26: 6th round: 11:00 a.m. 7th round: 6:00 p.m.

Sunday, October 27 8th round: 10:30 a.m. 9th round: 5:30 p.m.

Online entry: www.onlineregistration.cc

Hotel booking: <http://www.adobadearborn.com/> (Type ches in the IATA box to get the \$99/night rate)

For more info, contact: Alan Kaufman, info@michiganchessfestival.com 248 497 6912

*NOTE: 50% of up to the first \$400 of any prize won by a player who received an "entry fee waiver" will be deducted from such player's prize. The maximum such total deduction will therefore be \$200.

*****5 Round Weekend Swiss Portion Two Day and three day schedules, October 25-27 or October 26-27*****

Open Section: EF: \$80 before October 1, \$90 between October 1 and October 16, \$105 after October 16

Prizes: 1st \$1000, 2^d 600, 3^d 400 4th 200 Also: U2200: 450, 250, 100, U2000: 400, 200 100

U1800 Section: EF: \$60 before October 1, \$70 between October 1 and October 16, \$85 after October 16

Prizes: 1st: \$600, 2^d 300 3^d 200 U1600: 350, 250 106

U1400 Section: EF: \$40 before October 1, \$50 between October 1 and October 16, \$65 after October 16

Prizes: 1st \$400, 250, 150 U1200 250 150 (All round times consistent with typical weekend Swiss)

*****U1000 one day 5 round Swiss, OCTOBER 26, 2013:*****

EF: \$25 Trophies and medals. No monetary prizes. Awards (trophies) to 1st 2^d 3^d overall. Trophies to 1st U 800, 1st U 600 1st U 400. Awards to all scoring 3.0 or better.

Michigan residents must be USCF and MCA members. All players must be USCF members. These rules apply to all sections and schedules.

NOTE: Three choices: Norm possible 9 rounder, typical weekend Swiss, One day U1000