

Lythrum thesioides: how to conserve a species with an unknown ecology?

Research -management partnership

Gazaix A.^{1;2}, Grillas G.¹, Gauthier P.², Pirsoul L.³,
Kluszczewski M.³ & Thompson J.D.²

¹ Tour du Valat, Research Center for the Conservation of Mediterranean Wetlands, Le Sambuc, 13200 Arles, France.

² UMR 5175, Centre d'Ecologie Fonctionnelle et Evolutive, CNRS, 1919 Route de Mende, cedex 5, 34293 Montpellier, France

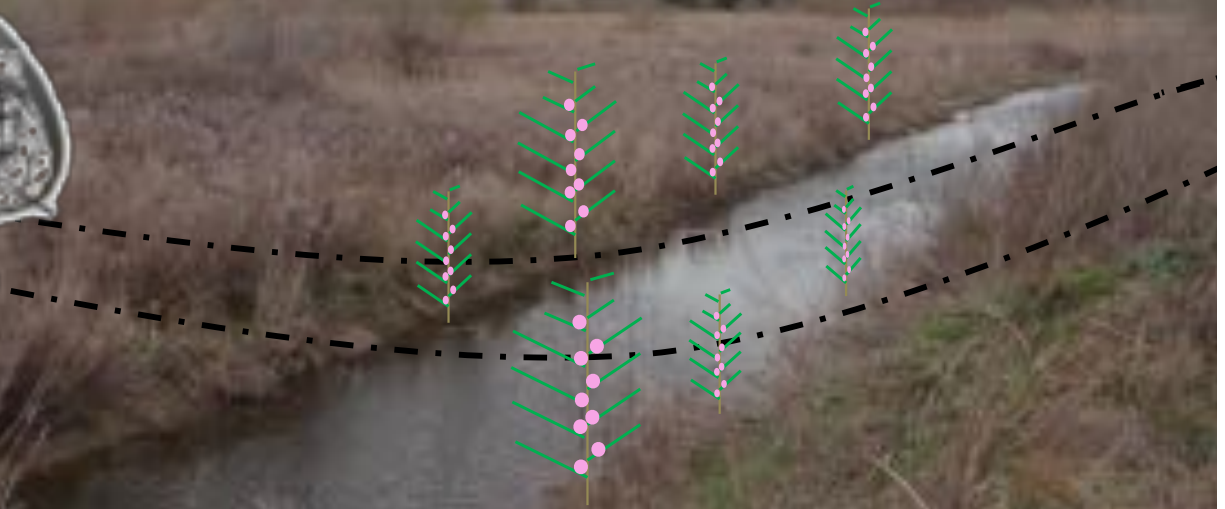
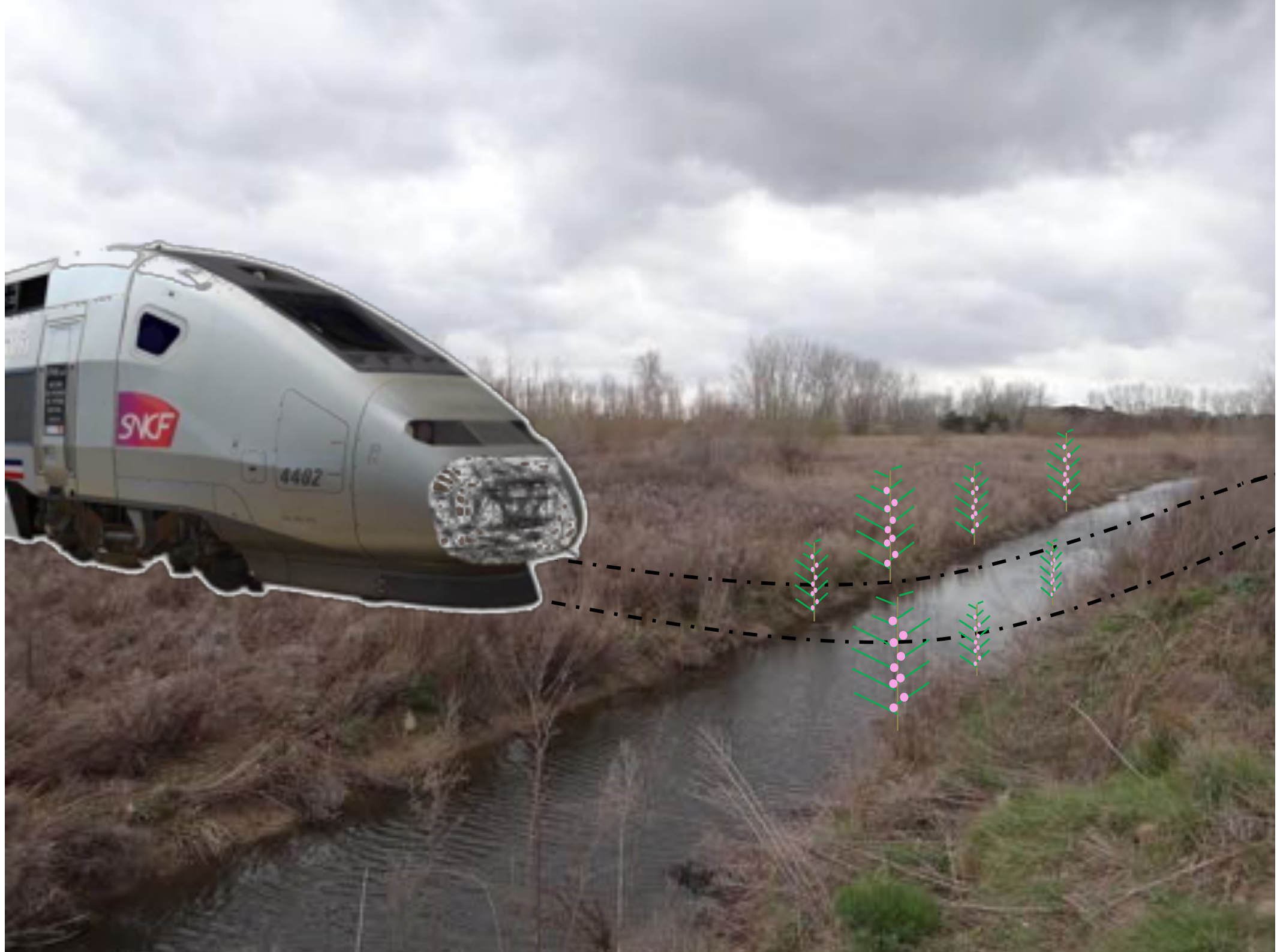
³ Conservatoire d'Espaces Naturels Languedoc-Roussillon, 26 Allée de Mycènes, 34000 Montpellier





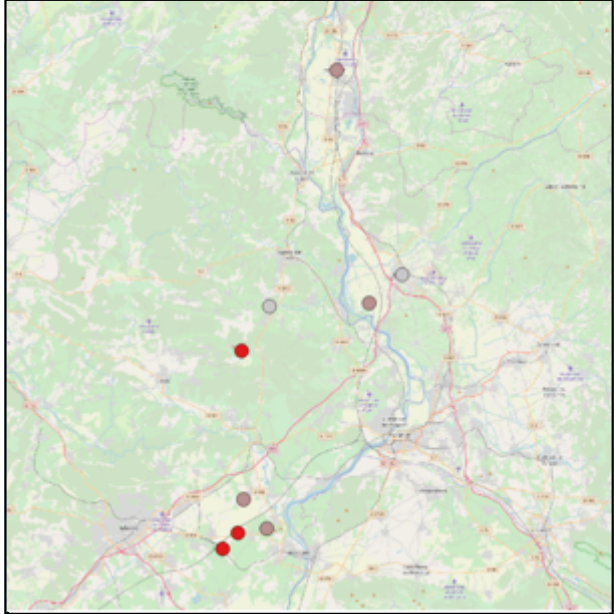
Photo : M. Charrier







Observations of *L. thesiodes* since 18



Knowledges of *L. thesioides* ecology?



Scientific research



Management / practitioners



Research programme

Ecological niche

Germination



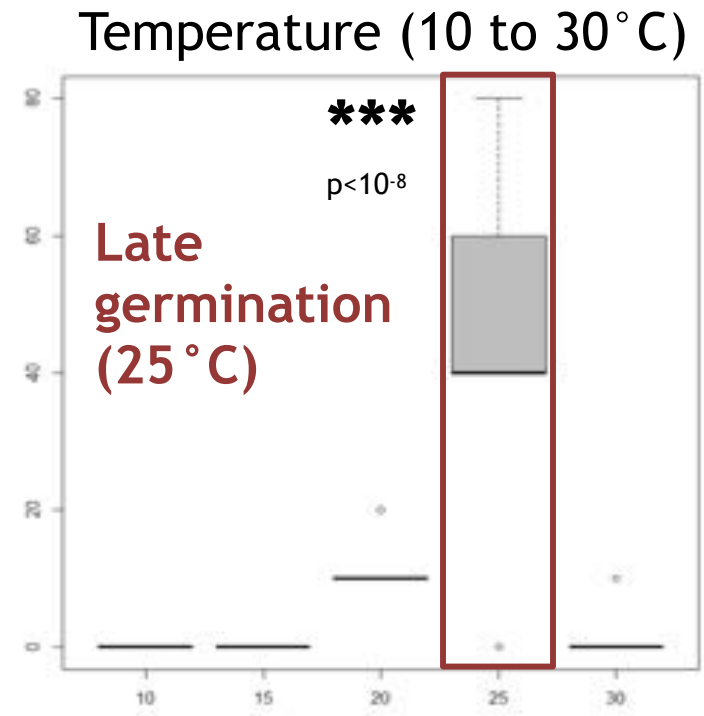
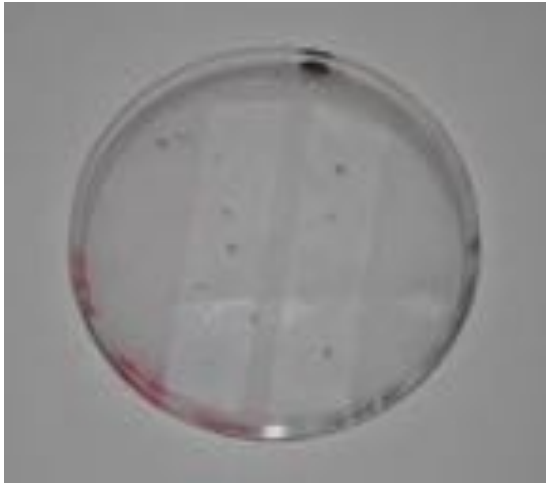
Population of Campuget (local)



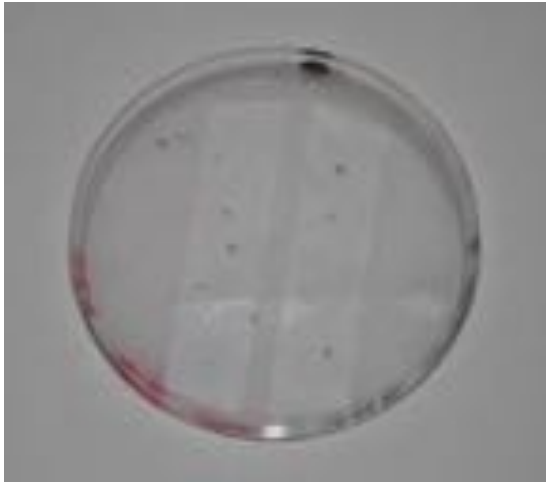
Adult plant niche



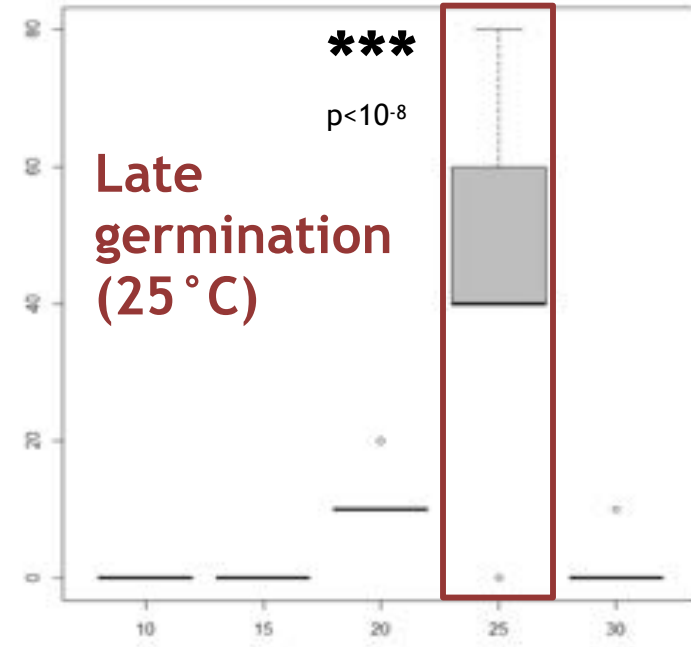
Germination



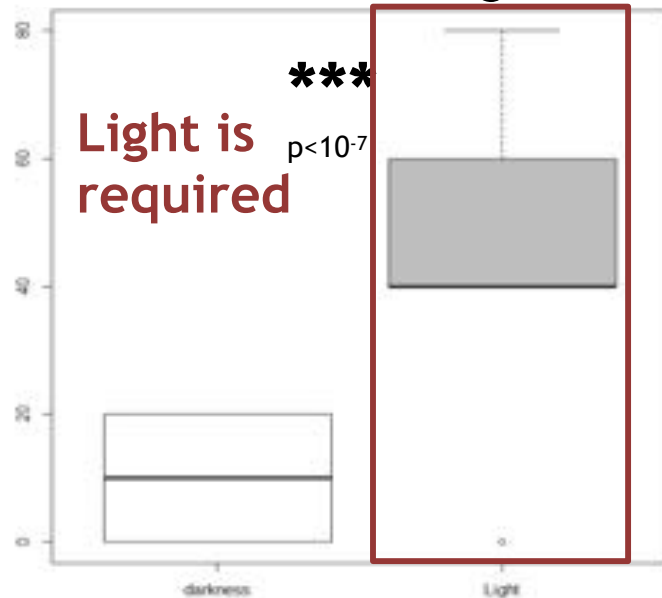
Germination



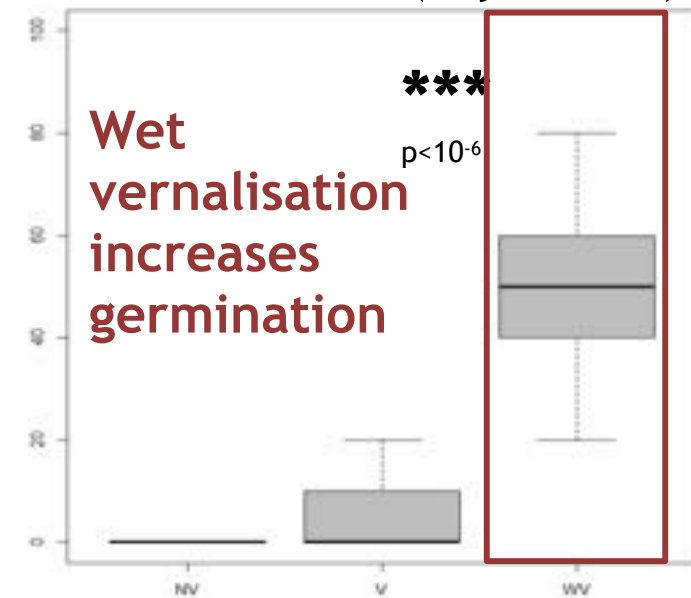
Temperature (10 to 30 °C)



Darkness vs Light



Vernalisation (dry & wet)



Adult plant niche



L. portula



L. thymifolia



L. borysthenicum



L. thesioides



L. tribracteatum



L. hyssopifolia

Adult plant niche



Seed bank mapping (out of the pits)

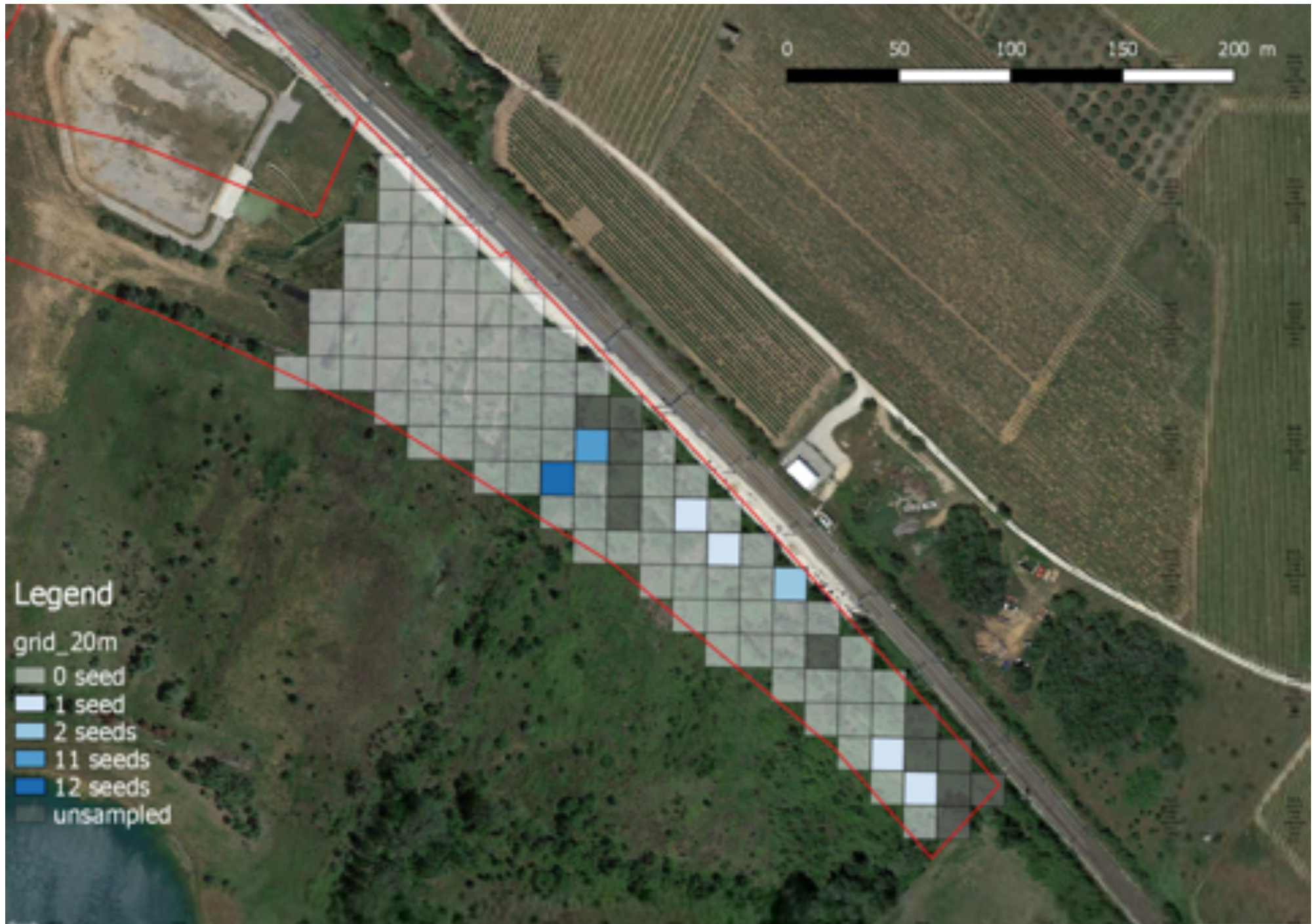


Map out of the pits

Seed bank mapping (out of the pits)



Seed bank mapping (out of the pits)

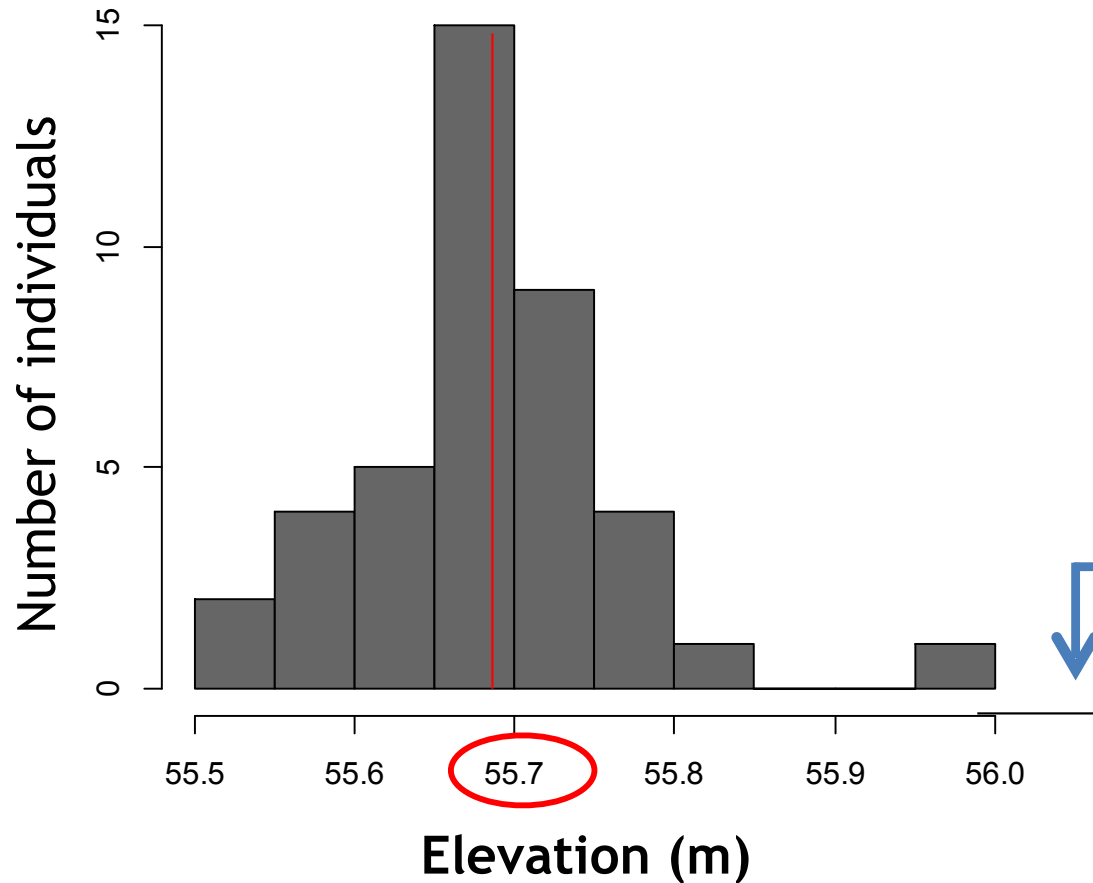




What is happening in the pits?

Seed bank mapping

Elevation of growing plants in pits
(2017)



Mean for seedbank
out of pits

Mismatch between seedbank and hydrology

Conclusion

Hydrology



Main factor for management/**restauration**



Conclusion

Hydrology



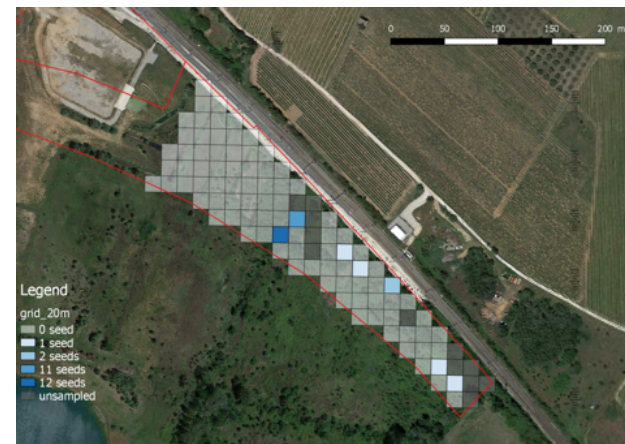
Main factor for management/restauration



Low seed bank



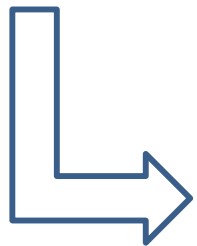
Reinforcement



Conclusion



Status, Threats & Solutions :
Only 24 % of « conservation » articles



**Need for partnership
at the very beginning of projects**