

Media overview

OKI Media Reference	OKIMED89
Manufacturer	TECCO
Supplier	OKI
Supplier Reference	09004651
Media Description	OKI A4 Banner Paper 210X900 mm
Key Characteristics	Matt white, printable both sides, 160gsm
Size	210 mm x 90 mm
Weight	160gsm
Thickness	
Warranty	See Media Statement for the details
IVP Media Proposition	
IVP Print Applications	Retail signage, event banners, event information, etc.

Media Samples



OKIMED89 OKI Banner Folding Wine Brochure Sample.pdf  
FRONT



OKIMED89 OKI Banner Folding Wine Brochure Sample.pdf  
BACK

## Device Setup

Device	C824n, C824dn, C834nw, C834dnw, C844dnw
Firmware Level	A01.11_0_4 or later
CMF version	Not required
Media Type	PLAIN
Media Weight	UH2 (Ultra Heavy 2)
Feeding Tray & Orientation	MPT (MultiPurpose Tray) A4 SEF (Short Edge Feeding) Manual Duplex
Output Bin	Face-off (Front Output)
Main Limitations <i>Please refer to the MEDIA Statement for all the details</i>	Media must be printed from the MP Tray only and exit to the Top output tray. The pickup roller may leave a visible mark at the top centre of every page being loaded. This is caused by the reverse side of the previous page damaging the front side of the next page. To avoid this mark, please feed the Media one sheet at a time



MPT A4 SEF Feeding  
FRONT



Face-UP- Back Output  
FRONT



MPT A4 SEF Feeding  
BACK



Face-UP - Rear Output  
BACK

## Sample Printing Instructions These instructions are based on C844 model

- 1 Driver**
- 2 Device setup and preparation**  
Open MPT tray and put the media into the tray according to orientation described into «device setup» section
- 3 Printing the file**  
Open the PDF file with Acrobat Reader DC and click CTRL+P to open the PRINT interface
- 4 Select the C844 PS printer**
- 5 Configure the paper sizing & handling settings as show in the picture**  
Please note that the sample is printed in «Manual Duplex» mode.  
**Print First page 1 and then page 2**
- 6 Click on Properties button to access to the PS driver settings**
- 7 Access to the Paper/Quality tab to configure Paper Source and Media Type according to the setting specified into «device setup» section**

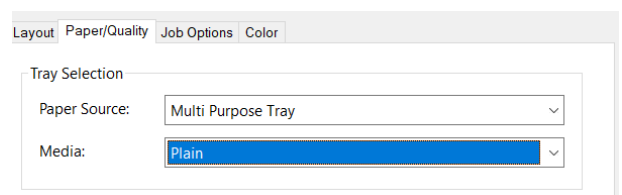
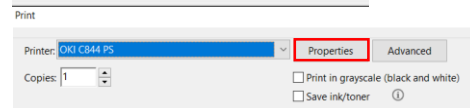
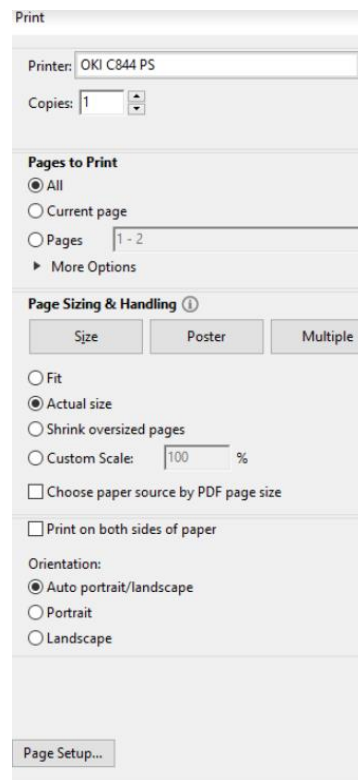
Postscript Version 1.0.1



MPT A4 SEF  
Feeding  
FRONT

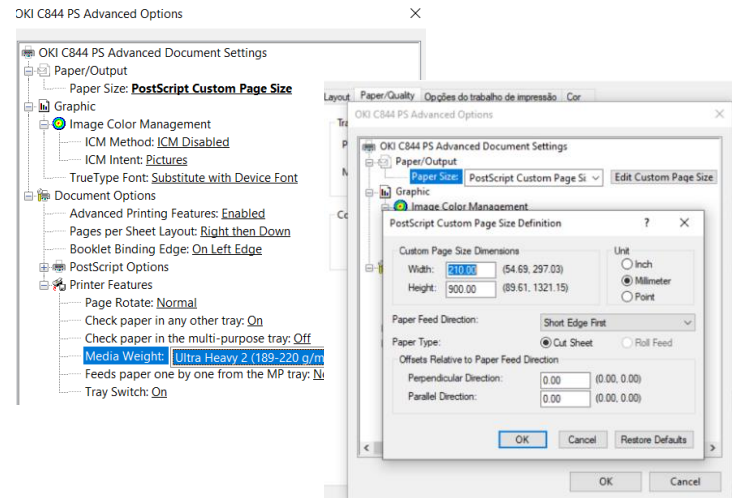


MPT A4 SEF  
Feeding  
BACK

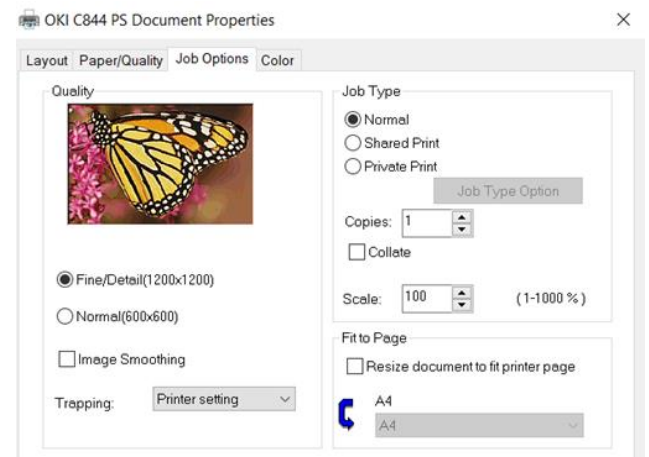


## Sample Printing Instructions These instructions are based on C844 model

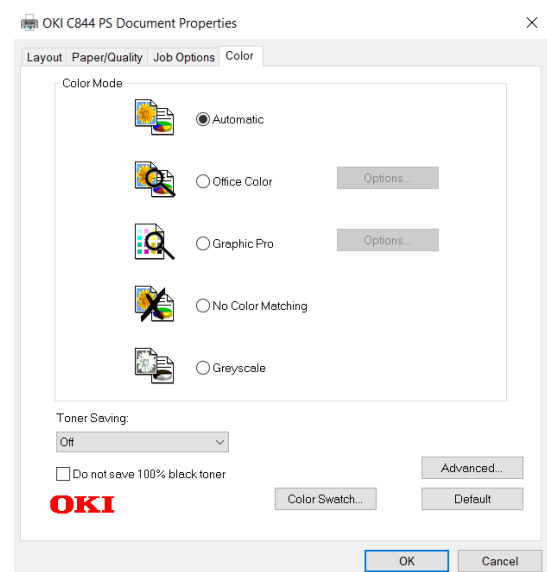
**8** Please click on Advanced button to access to the interface to setup the Media Weight (UH2), please also to configure custom size for the banner (210mmx900mm) and click OK to confirm the setting



**9** Click Job Option tab to set «Quality» *Fine/Detail(1200x1200)* [only for C844dnw]



**10** Click Colour Tab to set Colour Mode on «Automatic» and «Toner Saving» on OFF



**11** Click OK to register the setting and return to the Adobe Reader DC print Interface

**12** Click «Print» button to send the data to the printer

