

# THE MARNHULL MESSENGER



**PAGE 22**

THE MARNHULL PLAYERS  
PRESENT

## Dick Whittington

### DICK WHITTINGTON

Friday 31st Jan - Sunday 2nd Feb  
Tickets on sale now from Robin Hill and Spar

**PAGE 15**

### GREEN PROJECT

The climate is changing, and concerns are increasing.



**PAGE 12**

### Marnhull 12K

The Marnhull 12K Run is back!  
19th April 2020



**PAGE 7**

### THE SURGERIES

What's new from our local doctors surgeries



**PAGE 16**

### IN OUR CHURCHES

All the latest news from the churches



**PAGE 18**

### AT OUR SCHOOLS

The latest from our village schools

# SUPER HERO WEB SOLUTIONS



**WEBSITES**

**APPS**

AND  
MUCH MUCH  
MORE!

**SEO**

**MARKETING**



**Dorset Tech**  
Part of **Honest** Tech Group

[WWW.DORSET.TECH](http://WWW.DORSET.TECH)



## WELCOME TO YOUR MARNHULL MESSENGER

**CHRIS RYU**  
Messenger Editor

### NEW YEAR AND NEW LOOK MESSENGER

#### Happy New Year to those of you whom I've not bumped into yet.

I'm so excited to reveal this new look Marnhull Messenger - with its rather apt issue number 101. It's been a lot of work, so I've called in some help from my team at Dorset Tech, but I hope you all like the fresh new look.

It came at an interesting, albeit stressful time as we've been moving office to Gillingham High Street during the Christmas "break", while trying to help the panto group and give the Messenger a nice spring clean, but we got there in time.

I dug out a copy of Vaughan Ham's last issue (March 2015) recently, along with a few from across the last few years and it was really quite fun to see how not only the Messenger itself has changed, but the adverts, articles and village on the whole.

#### ADVERTISERS - A LIST OF THANK YOU WISHES!

Welcome to our new advertisers and our continued thanks to those that have renewed. The Messenger is entirely funded by advertising, so we are eternally grateful for their loyal support. A huge thank you is owed to Rosie Gall who managed to find time on top of her daily activities and directing the Panto, to book all the adverts. A special thank you to the advertisers that have embraced the new full colour print and really pushed the boat out with beautiful new adverts.

#### MARNHULL DIRECTORY

I was surprised to hear of some issues with out of date content in the Marnhull Directory as we published a request for updates in several issues leading up to it. There will soon be a fancy online village directory that can be updated all year round and will "power" the printed one, so please keep an eye out for news on this in upcoming issues. In the meantime, please send any directory amends to either Fiona or myself on the addresses listed to the right.

#### MARNHULL PANTO AND STAGE

I heard rumours over the last few days that there is still a chance to save the village stage... I certainly hope that it's true! It came too late to do anything for this particular issue, but please look out for notices around the village for some fundraising activities to try and get a village hall extension that will benefit all users and not lose a vital piece of village equipment.

**On that note: please, please, please show your support for the Marnhull Pantomime this month as currently this will be the last ever event on the proper Marnhull Stage.**

#### Disclaimer

The opinions expressed in the articles and on the pages of the Marnhull Messenger are not necessarily those of the Marnhull Messenger. All the dates and details are as supplied by the contributing organisations. The Marnhull Messenger is not responsible for errors or omissions, accuracy of the content, nor the failure of any published event to go ahead. The letters and articles published in this magazine are accepted in good faith and the views expressed therein are not necessarily the views of the Messenger Steering Committee, whose decisions on publication are delegated to the Editor and are final.

This publication is provided for your use "as is" without warranty of any kind, either expressed or implied; inclusion of an advertisement for an event or service does not imply that they are endorsed by the Marnhull Messenger. The Marnhull Messenger will take all reasonable precautions to ensure that the content is socially and morally acceptable.

#### Privacy Policy

The Marnhull Messenger respects the privacy of organisations and persons who submit information for publication. Personal details, including photographs, will only be published if approved and submitted by organisations or individuals. No personal details will be given out or sold to any third parties, whether individuals, organisations or companies.

### DEADLINE FOR NEXT ISSUE

**MID-DAY 14th FEBRUARY**

E-mail all texts, announcements and other requests to:  
**editor@marnhullmessenger.org.uk**

### MARNHULL MESSENGER CONTACT DETAILS

#### EDITOR:

Chris Ryu - editor@marnhullmessenger.org.uk  
01258 808577 (option 1) - 3 Corner Close, Marnhull, DT10 1PB

#### WEBMASTER:

Chris Ryu - as above

#### ADVERTISING:

Rosie Gall - rosiegall1@gmail.com

#### TREASURER:

Bill Shannon - treasurer@marnhullmessenger.org.uk  
01258 820890

#### CIRCULATION:

The Eveleighs - circulation@marnhullmessenger.org.uk  
01258 821049 - Weavers House, Burton Street, Marnhull, DT10 1PS

#### CHAIRMAN:

Ian Gall - chairman@marnhullmessenger.org.uk  
01258 820484

#### ADMINISTRATOR:

Fiona Nelson - administrator@marnhullmessenger.org.uk  
01258 821036

### MARNHULL MESSENGER WEBSITE

#### WHO DO I CONTACT?

Any amendments or proposals for new pages in the messenger web site should be made to:

**Chris Ryu Email: editor@marnhullmessenger.org.uk**

**Rosalind Eveleigh Email: rseveleigh@icloud.com**

### MARNHULL MESSENGER DELIVERIES

It takes about 40 people, all of whom are volunteers, to collate and deliver The Marnhull Messenger to every home and business in the village. We are extremely grateful to this dedicated team, without whom the magazine simply would not flourish.

Whilst we always aim to deliver the magazine by the 1st of the month, from time to time illness, family commitments and a myriad of other personal issues can sometimes get in the way, resulting in the occasional late delivery. Recently, there have been a few complaints from villagers, because they felt their copy of The Marnhull Messenger was delivered late.

It might be worth pointing out that if it is essential to you to receive the Marnhull Messenger by a particular date and it hasn't arrived, then the Church, the two pubs and all the businesses in the village have spare copies available.

Ian Gall – Chairman, The Marnhull Messenger Steering Group.

### FEBRUARY

1st - Panto Dick Whittington @ 14:00  
1st - Panto Dick Whittington @ 19:00  
1st - The Originals (formerly The Silhouettes) @ 20:00  
British Legion Club  
2nd - Panto Dick Whittington @ 14:00  
4th - Art for Everyone @ 10:00  
4th - Cafe Science - Biodiversity @ 20:00  
Blackmore Vale inn  
5th - Fit Steps @ 11:00  
5th - Zumba @ 19:30  
St Gregory's primary school  
6th - Baby and Toddler group @ 09:30  
6th - Marnhull Craft Club @ 10:00  
Methodist Hall  
7th - Marnhull Lunch Club @ 12:00  
8th - Just Bertie @ 20:00  
British Legion Club  
9th - Artsreach - Down the Pub with Luke Wright @ 14:00  
Blackmore Vale inn  
10th - Women's Institute - Birth, Marriages and Deaths @ 07:30  
10th - Women's Institute - Births, Death and Marriages - Hilary Green @ 19:30  
11th - Art for Everyone @ 10:00  
11th - Garden Club - Annual General Meeting and American Supper @ 19:30  
12th - Fit Steps @ 11:00  
12th - Zumba @ 19:30  
St Gregory's primary school  
13th - Baby and Toddler group @ 09:30  
14th - Blackmore Vale Art @ 10:00  
15th - Outrage @ 20:00  
British Legion Club  
17th - Marnhull Music Society @ 19:15  
17th - Marnhull Music Society "Ladies' Choice" @ 19:15  
18th - Art for Everyone @ 10:00  
19th - Fit Steps @ 11:00  
19th - Zumba @ 19:30  
St Gregory's primary school  
21st - Marnhull POPPin Cafe @ 10:00  
22nd - Just the Two of Us @ 20:00  
British Legion Club  
25th - Moviola Knives Out @ 07:30  
25th - Art for Everyone @ 10:00  
26th - Fit Steps @ 11:00  
26th - Zumba @ 19:30  
St Gregory's primary school  
27th - Baby and Toddler group @ 09:30  
28th - Figure Drawing @ 10:30  
29th - Quiz night (Free) @ 20:00  
British Legion Club

### MARCH

3rd - Art for Everyone @ 10:00  
4th - Fit Steps @ 11:00  
4th - Zumba @ 19:30  
St Gregory's primary school  
5th - Baby and Toddler group @ 09:30  
5th - Marnhull Craft Club @ 10:00  
Methodist Hall  
6th - Marnhull Lunch Club @ 12:00  
9th - Women's Institute - Vietnam- Mike Spencer @ 19:30  
10th - Art for Everyone @ 10:00  
10th - Garden Club - Ascension Island - A Drop in the Ocean - Martin Young @ 19:30  
11th - Fit Steps @ 11:00  
11th - Zumba @ 19:30  
St Gregory's primary school  
12th - Baby and Toddler group @ 09:30  
12th - Bridge Afternoon @ 13:00  
13th - Blackmore Vale Art @ 10:00  
16th - Marnhull Music Society @ 19:15  
16th - Marnhull Music Society presentation by Mike Wilkins @ 19:15  
17th - Art for Everyone @ 10:00  
18th - Fit Steps @ 11:00  
18th - Zumba @ 19:30  
St Gregory's primary school  
19th - Baby and Toddler group @ 09:30  
20th - Marnhull POPPin Cafe @ 10:00  
24th - Art for Everyone @ 10:00  
25th - Fit Steps @ 11:00  
25th - Zumba @ 19:30  
St Gregory's primary school  
26th - Baby and Toddler group @ 09:30  
27th - Figure Drawing @ 10:30  
31st - Art for Everyone @ 10:00

### APRIL

1st - Fit Steps @ 11:00  
1st - Marnhull Music Society - BSO concert in Poole @ 18:00  
1st - Zumba @ 19:30  
St Gregory's primary school  
2nd - Baby and Toddler group @ 09:30  
2nd - Marnhull Craft Club @ 10:00  
Methodist Hall  
3rd - Marnhull Lunch Club @ 12:00  
9th - Blackmore Vale Art @ 10:00  
15th - Women's Institute - Annual Meeting Social with Cheese and Wine @ 19:30  
17th - Marnhull POPPin Cafe @ 10:00  
19th - Marnhull 12k and Children's Fun Races @ 10:30  
St Gregory's primary school  
20th - Marnhull Music Society @ 19:15  
20th - Marnhull Music Society "Gentlemens' Choice" @ 19:15  
23rd - Baby and Toddler group @ 09:30  
30th - Baby and Toddler group @ 09:30

## SUBMIT YOUR EVENTS INTO A LIVE CALENDAR

On the messenger website and they'll be added to this diary in the next issue!

[www.marnhullmessenger.org.uk](http://www.marnhullmessenger.org.uk)

## THE MARNHULL HUB

### EXCITING NEWS!! EXTENDED OPENING HOURS, A NEW QUIZ & NEW PEOPLE!

We are now open Saturdays AND Mondays, 10-12, AND Thursdays 3-5, for refreshments & chat, and for our popular Repair Café. Our recycling centre is open then too. More details below.

Also, coming soon by popular request, a '2020 Quiz 100'. Look out for info at the Hub.

And we are delighted to welcome a new Repairer, Lorraine - see the Repair Café section below - and to be hosting 'Coconut and Cotton', of Shaftesbury; a plastic-free, waste-reducing store for the earth-conscious consumer (see <https://coconutandcotton.co.uk>). Take a look at what's on display in the Hub, and let us know if you'd like us to stock other items from the online range.

### WHAT'S ON AT THE HUB IN FEBRUARY?

- Drop-in sessions, for refreshments & chat - every Saturday and every Monday, 10 - 12, and every Thursday 3 - 5.
- Repair Café - every Saturday and Monday, 10 - 12, and every Thursday 3 - 5.
- Recycle at the Hub - every Saturday and Monday, 10 - 12, and every Thursday 3 - 5.
- French conversation - Tuesday afternoons from 2 pm
- Meet Mandy Robertson, our local police community support officer - Thursday 6 February, 11.30 - 12
- The Hub Book Group - Tuesday 18 February, from 7 pm (and every third Tuesday of the month)
- Jane Batten, Neal's Yard, will be at the drop-in session on Saturday 22 February, 10-12
- The Hub Jumble Sale - Saturday 15 February, 10 - 12 (and every third Saturday)
- Alison Palmer, Off to Sew @ the Hub - Wednesday 26 February 3 - 5 (and every fourth Wednesday)

### RE-USE, REPAIR, RECYCLE

As well as the Hub book & puzzle exchange and the monthly Jumble Sales, our popular Repair Café is now open three times a week. Our team of skilled craftspeople has been joined by Lorraine, who repairs clothes, bedding, cushions, curtains etc. Lorraine will be at the Hub on Saturdays and Thursdays.

Our team will tackle almost anything, so, if you think it might be repaired, don't throw it away. Let the experts have a look...

Our Recycling Hub is also proving a success. We can take things that the Council can't:

- crisp packets, including multipack wrappers
- Pringles tubes (but only this brand, please)
- confectionery wrappers (sweets, chocolate, etc)
- snack packets
- peanut, pretzel & popcorn packaging
- biscuit, cracker & cake bar wrappers
- bread bags (stretchy plastic only)
- toothpaste tubes, toothbrushes & plastic packaging
- baby food pouches & baby snack packaging
- pet food pouches (CLEAN AND DRY, PLEASE) and dry pet food & treat packaging
- dishwasher tablet & salt packaging, and dishwasher cleaner & freshener outer packaging

- cleaning wipe packaging (but not baby wipes - sorry) and, new for 2020:

- laundry tablet packaging & tinted fabric conditioner bottles
- plastic air freshener containers & cartridge caps
- writing instruments
- Tassimo and L'OR coffee packaging; and
- some personal care and beauty packaging

A full list of what we can take may be found on the Hub website; or pick up a list at one of the Hub drop-in sessions.

### AN APOLOGY

Apologies to anyone who found the idea of a Marnhullmade Marmalade competition, announced in the last edition of the Messenger, a-peeling... We have had to put the idea on the back burner, where it will simmer until next year.

### VOLUNTEERS PLEASE!!

The Hub is run by volunteers - and there aren't enough of us. We particularly need people to help with the drop-in sessions, even if only occasionally. You can commit to as few dates as you want, and well in advance so you know where you are. Every little helps! If you'd like to find out more, please drop in and talk to us. Come and join the Hub!

### AND REMEMBER

- For more information keep an eye on our website, social media, the Hub window and information board, and the village noticeboards.
- The Hub is a great venue for all kinds of smallish gatherings - meetings, networking, pop-up shops & events, children's activity parties, clubs, groups, and so on. Hire costs from just £10 for a three-hour session.
- The Hub is a not-for-profit organisation run entirely by volunteers. If you'd like to help, or to make a booking or ask a question, email [booking@marnhullhub.org.uk](mailto:booking@marnhullhub.org.uk), contact us via the website, [www.marnhullhub.org.uk](http://www.marnhullhub.org.uk), or just drop in when we're open and talk to one of the team.
- And if you're not sure where the Hub is, we're in Burton Street, Marnhull DT10 1PH. See you there!





**BLACKMORE VALE INN**  
BURTON STREET, MARNHULL 01258 820701

**Come and see what we can offer you and your child**

It's all  
**GOOD**  
at St. Mary's, Marnhull





**Small class sizes**  
**Breakfast/After School Club**  
from 8:00am to 6:00pm  
**Onsite preschool**  
led by fully  
qualified teacher  
**30 hours early years**  
funding offered

*"The school is going from strength to strength to help pupils achieve their maximum potential"*  
Ofsted Jan 2017

*"A great school in a beautiful location. My children love it and thrive on the happy, friendly atmosphere and high quality teaching"*



St Mary's, Old Mill Lane, Marnhull DT10 1JX 01258 820417  
www.stmarymarnhull.dorset.sch.uk


**ROBIN HILL STORES**  
POST OFFICE, CONVENIENCE STORE & DELICATESSEN

01258 820959

Mon-Saturday 8 til 8  
Sunday 8-12.00

Email - [robinhillstores@gmail.com](mailto:robinhillstores@gmail.com)  
[www.robinhillstores.com](http://www.robinhillstores.com)

FREE RANGE HAND CARVED HAM,  
LOCAL CHEESES, OLIVES, SNACKS,  
FRESHLY DELIVERED BREADS,  
HOMEMADE SANDWICHES  
NEWSPAPERS & MAGAZINES  
A BIG RANGE OF HOUSEHOLD ESSENTIALS,  
CARDS & STATIONERY, WINES, BEERS & SPIRITS



We now source a range of ethically sourced gifts, including cushions, candles, notebooks, silk scarves and more.  
Home delivery on newspapers, magazines and groceries.  
Delicious fresh veg & fruit, breads & cakes - delivered in daily.  
Special orders catered for.  
Daily essentials & deals on branded products too.  
Full Post Office service + cash withdrawal, car tax, electricity, gas & mobile top up, National Lottery, Foreign Currency.  
Health Lottery, Teleflorist, Dry Cleaning.  
Hampers & Gift bags made to order.

**POST OFFICE, CONVENIENCE STORE & DELICATESSEN**

## FROM THE SURGERIES



### SOCIAL PRESCRIBING

The Practice now has Link Workers, professionally trained staff who are available to provide support, advice or guidance for any social, non-clinical need. We also have volunteer Health Champions who are available to help connect people to local services, community groups, or simply provide a reassuring listening ear.

It's called Social Prescribing - the process of connecting someone with an appropriate source of support, advice or guidance for any social, non-clinical need.

The term comes from the medical equivalent when a clinician prescribes medication or a course of treatment appropriate to a clinical need. Social prescribing can be used in response to isolation, loneliness or bereavement. When someone presents at their GP Practice, then the opportunity exists for the GP, nurse or receptionist to respond with an appropriate 'social prescription' such as providing details of a local group or service that can offer support.

Social prescribing is essentially anything that results in an effective response to someone who wants to change their health & wellbeing for the better. It's a big part of how we can help people to look after themselves better for longer. More information is available from Reception.

### FIBROMYALGIA/CHRONIC PAIN/CHRONIC FATIGUE SYNDROME SUPPORT GROUP

Our Health Champions in the Practice have recently set up a Fibromyalgia/Chronic Pain/Chronic Fatigue Syndrome support group in Sturminster. As well as being a forum to share help, support and information, there will be input from professionals and advice and guidance on keeping healthy, pain management techniques, relaxation and reducing stress.

The meetings are fortnightly at the Stur Medical Centre – the next ones being, Wednesday February 12th, Wednesday Feb 26th and so on, from 11.30-13.30. If you are interested in going along, just turn up, or get in touch with Debbie Martin - Carer's and Health Champion Lead, on 01747 856700 or via email - Debbie.Martin@dorsetgp.nhs.uk. Also, if you would like to volunteer to be a Health Champion and to help us with this project and others, we'd be delighted to welcome you.

### HELP AND KINDNESS

There are many formal and informal support providers across Dorset, but accessing information about what's available, is often difficult.

Help And Kindness aims to solve the problem, by bringing together all kinds of help and support that's available to people living and working in Dorset. Their project is joining up lots of these services and support networks so that they are easy to find. If you are looking for help or indeed, are part of an organisation offering support, then take a look at the Help And Kindness website - <https://www.helpandkindness.co.uk/>

## NEWS FROM THE NICK

### COMBATING CRIME IN YOUR NEIGHBOURHOOD

Phil Sugrue PC 2146



**There is only one crime to report since the last edition which was theft of tools from a vehicle.**

### SCAMS

The scams continue. Scammers claiming to be from Nat West Bank Fraud Department are phoning claiming that your account has been compromised and are asking you to move monies to another account – this would not happen as the bank would freeze your account to prevent any further activity. If you receive call of this nature contact your bank immediately using the national telephone number, as shown on bank statements, and NOT the contact number given by the scammers. Don't forget that these scammers sound very convincing and it can be easy to be taken in by them. Treat all such calls with caution and don't let scammers get their hands on your hard earned cash!

Please note and follow the general advice for telephone SCAMS please be vigilant do not give out any personal details. There are a few pointers below:-

- **NEVER give out your pin number or bank details to ANYONE who calls you no matter who they claim to be or where they claim to be from**
- **NEVER send cash in a taxi or via courier**
- **NEVER send bank cards anywhere – always keep them with you**

**DO NOT ENGAGE WITH THESE FRAUDSTERS. DO NOT GIVE OUT PERSONAL AND BANK DETAILS. HANG UP ON FRAUDSTERS!**

See what your local NPT have been up to by following our Facebook page <https://www.facebook.com/NorthDorsetRPT>

PLEASE BE VIGILANT AND REPORT ANY SUSPICIOUS ACTIVITY  
Report suspicious activity either to 101 or via the police website <https://www.dorset.police.uk/do-it-online#report>

The local NPT surgeries are held on the 1st Thursday of the month at The Hub Burton Street between 11.30 and 12 noon. However there will be occasions when no one is available to attend due to operational reasons. If you need to contact your local NPT the email address is below this however is NOT for reporting crimes as it is not monitored 24/7. If you need to report a crime, the web address is above, or you can phone 101. If a crime is occurring or a life is in danger phone 999.



PCSO 5352

Mandy Robinson

Sturminster Newton Town and Rural Policing Team  
[northdorsetruralnpt@dorset.pnn.police.uk](mailto:northdorsetruralnpt@dorset.pnn.police.uk)



3 Newbury, Gillingham  
SP8 4QX Opposite Lidl)

Te. 01747 821010

[www.norddisorset.org.uk](http://www.norddisorset.org.uk)

Reg. Charity No. 1110328

**We can provide the following:**

- New & used equipment
  - Hire equipment
  - Disposable items
  - NHS hearing aid batteries
  - Information & advice
  - Volunteer opportunities
  - Call us for information
- Open 10am to 4pm Mon – Fri.  
10am to 1pm Sat



6 New Street, Marnhull DT10 1PY

**Tiling, Slating, Leadwork, Timberwork**  
**New & re-roofing work undertaken**

Nick Upshall  
Tel: 01258 821231  
Mobile: 07801 851079  
[www.camelotbuilders.co.uk](http://www.camelotbuilders.co.uk)

**Paul Woodrow**

Home and Garden Services



Fully insured garden maintenance and handyman service across the Blackmore Vale

**07392727584**

[office@woodrowhomeandgarden.co.uk](mailto:office@woodrowhomeandgarden.co.uk)

[@woodrowhomeandgarden](https://www.facebook.com/woodrowhomeandgarden)

[www.woodrowhomeandgarden.co.uk](http://www.woodrowhomeandgarden.co.uk)

**The Barn  
Bed & Breakfast**

**Quiet, Comfortable and Friendly  
on the edge of the village**

Hillside  
Marnhull  
01258 820912

[www.thebarnbedandbreakfast.co.uk](http://www.thebarnbedandbreakfast.co.uk)

**The Old Bank  
Bed & Breakfast**

*Comfortable, friendly,  
Family Home  
In the centre of the village*

The Old Bank,  
Burton Street, Marnhull  
01258 821019  
[enquiry@theoldbank-marnhull.co.uk](mailto:enquiry@theoldbank-marnhull.co.uk)

**TONY WILLIAMS  
ACCIDENT REPAIR**

A LOCALLY  
SITUATED COMPANY  
OWNED BY A LOCAL MAN  
WITH **35**  
YEARS EXPERIENCE



Unit 7 Gibbs Marsh  
Trading Estate Stalbridge.  
DT10 2RY

**01963 365733**

**NO VAT: 20% CHEAPER  
THAN MOST OTHER  
REPAIRERS !**

**PGM**

Pauline Mitchell

Soft Furnishing,  
Dressmaking &  
Alterations

**01747 853509**

*20 years experience*

The Chimes,  
3 St. Rumbolds Road,  
Shafetsbury  
SP7 8NE



## ROYAL BRITISH LEGION



During the Remembrance period taking everything into account Marnhull raised an incredible £3,148. Our door to door collectors were responsible for half of that with the rest coming from donations (including the church collection) and the poppy quiz. So give yourselves a pat on the back Marnhull and big well done to the collectors.

Our jumble sale on January 11th raised around £400, the room was packed with buyers and they certainly bought. The January sale has proved to be a great success and has now become a permanent fixture. Thanks to all who bought, helped or donated. The next one is in March so if you have anything leave it in the porch down the Club or give me a ring if you would like me to collect.

We are trying something different on Saturday February 25th, instead of music we are having a gentle quiz. There will be no entry fee and no prizes and no winners or losers just a chance to exercise what Hercule Poirot would describe as your little grey cells. We have a couple more pencilled in during the year and all are welcome, no need to be a member and start time around 8.30 finishing roughly 10pm, and then of course there will be the fish 'n' chip Poppy quiz in November.

We attended the annual Dorset County RBL Conference in January and were treated to some amazing statistics on the monies raised and distributed by the Legion. Nationally the annual Poppy Appeal raised £50.2 million with 17,661 cases being dealt with during the year, everything from money advice, homelessness, war pensions and Admiral nurses helping families with health problems of all kinds. The South area which takes in Dorset, Hampshire, Wiltshire and the Isle of Wight collected £18 million during the Appeal period and dealt with 1,967 cases.

This is just a taste of what the Legion does and there are care homes and respite centres and many other peripheral things on top of this. We learnt that the Legion carries a £70 million reserve which sounds a lot till we were told that that is approximately six months running costs. So get sorting that jumble out.

We still have music on the other Saturday nights so treat yourself to a night out for a modest £2 for non-members.

\*\*\*\*\*

For Branch business contact Jack Whitehead on 01258 820800  
or whiteheadjack51@gmail.com

For Hall business contact Tony Junge on 01258 820397

**Marnhull's Big Race is Back!**  
Enter or support and help welcome hundreds of Dorset runners to our wonderful village.

**Sunday 19th April, 10:30 @ St Greg's School**

**M12K**

All proceeds go to St Gregory's School

Race HQ at St Gregory's School

Childrens Fun Races  
Fastest resident prizes ♂ and ♀  
Yummy refreshments

Enter Online <https://www.facebook.com/Marnhull2k/>  
<https://www.fullonsport.com/event/m12k-2020-marnhull/profile>

## MARNHULL WOMEN'S INSTITUTE

**REPORT JANUARY 2020** - Kurling – yes with a K. A growing in popularity tournament, played on any flat surface, ideal for all to try. Squealing, laughing, generally letting go in complete excitement, WI ladies were far from the stereotype expected of them at a regular meeting on a Monday evening. The village Hall has seen many activities in it's time, but nothing like this. The competitive challenge was to skilfully let the Kurling stone glide on its castors – unlike the stones on ice – until they reach the target. That sounds quite civilised, however it was not long before strategies were employed to crash into currently well placed stones, and dash the hopes of the team in the lead. Shouts of delight, groans for misfortune, you could hear it all.

It certainly took a while to judge how hard to push, then when mastered, to scupper your opponents with a final flourish. Everyone relaxed, smiled and teased each other, it was good for physical moves and good for the soul! Certainly the Marnhull ladies are taking it seriously and are entering the Dorset WI league – watch this space to see how they progress.

The evening had begun on a more serious note, time for the Annual National resolutions to be discussed. From the five options available, our WI voted for the suggestion concerning working towards ending Modern Slavery. The WI has in the past lobbied effectively on violence against women and trafficking.

Next month's meeting is a talk given by a vet, entitled Births, Marriages and Deaths.

If you have considered joining the WI, this might be a good night to try!

## DORSET WILDLIFE TRUST: NORTH DORSET GROUP

### NORTH DORSET DWT PROGRAMME 2019 - 2020



The North Dorset Group of the Dorset Wildlife Trust organise a series of talks each autumn and winter at the Village Hall in Fontmell Magna (SP7 0PF). The talks take place on the third Wednesday of the month, start at 7.30pm and usually last 45 minutes. Our talks are open to everyone, admission is £2.50 (including refreshments & Honeybuns cakes) and children under 16 may attend for free. The proceeds from these talks go to provide tools and equipment for the DWT ranger in North Dorset and in the past few years the group has raised (and spent) almost £4,000.

### TALKS PROGRAMME 2020

**Wednesday 15th January 2020:** Wildflower Wonders – an illustrated talk by Dr. Bob Gibbons, author and wildflower tour leader.

**Wednesday 19th February:** Marine Conservation, MCZs and Plastics – an illustrated talk by Imogen Davenport, DWT Director of Conservation.

**Wednesday 18th March:** Reptiles of Dorset – an illustrated talk by Steve Davis, Head of DWT HR & Volunteering.

**Wednesday 15th April:** Bees and Wildlife Gardening – an illustrated talk by Brigit Strawbridge, DWT's Make Wildlife Welcome Hero and bee friendly gardener (as seen on TV). This talk will be preceded by a rapid AGM (max. 10 mins.).

## STURMINSTER NEWTON FLORAL GROUP

Sturminster Newton Floral group are holding a Floral Workshop entitled "Paper Flowers " at the Exchange Sturminster Newton at 7 30 pm on Wednesday February the 12th , all welcome , any information please phone:

Mary Clark on 01258 472024

## Hornbeam Kitchens & Joinery

### What we do....

- Kitchen design, supply and fit
- Supply only Kitchens, bedrooms and bathrooms
- Bedrooms
- Staircases
- Timber Windows and Doors
- Worktops
- Hardware
- Appliances
- Sinks and Taps
- Sheet cutting service
- We are open to Trade and Public



Check out our Facebook page and Instagram

Tel 07956320936 Email [hornbeamkitchensandjoinery@outlook.com](mailto:hornbeamkitchensandjoinery@outlook.com)

Applins Business Park, Farrington, DT11 8RA

## Marnhull Computers

Specialists in the setup and repair of all makes of computers, laptops, tablets and mobile phones



- New computers
- Upgrades & Repairs
- Speed up slow computers
- Software rebuilds
- Virus/Malware removal
- Screen Replacement

**Do you have an old or broken computer and would like to safely recover treasured documents or pictures?**

Based in the village with over 35 years experience and supplier to The Crown Inn

**Call Mark on 01258 821686 or email [mark@marnhullcomputers.com](mailto:mark@marnhullcomputers.com)**

## EXPECT *Far* MORE

At Farnfields Solicitors you can always expect a warm welcome combined with dedicated expertise and transparent straightforward pricing. All in all, when choosing us you can expect far more peace of mind.



e-mail: [info@farnfields.com](mailto:info@farnfields.com) or visit [www.farnfields.com](http://www.farnfields.com)



*Farnfields*  
SOLICITORS

## PARTNERSHIP FIRE AND SECURITY

Contact

Tel: 01747 858888

[enquiries@partnershipsecurity.co.uk](mailto:enquiries@partnershipsecurity.co.uk)



## LAVENDERS GREEN Complementary therapies

Aromatherapy  
Therapeutic massage. Reflexology.  
Reiki and Yoga tuition

Tanya Green ITEC  
Traditional Yoga Association  
Tel. 01258 820410  
m. 07729 301387

Register of Exercise  
Professionals  
[tanyaagreen@btinternet.com](mailto:tanyaagreen@btinternet.com)



## THE LEGION CLUB



**FIRST CHOICE FOR:**

- Club and Society venue
- Birthday parties
- Wedding and family celebrations
- Dinner dances
- Fund raising events
- Free Skittle alley

**EXCELLENT FACILITIES:**

- Adaptable arrangements
- Meeting room
- Bar
- Barbecue
- Safe garden
- Pool table/darts

**FUTURE EVENTS**

**Art classes every Monday and one Thursday.  
Short mat bowls Friday 2 to 5pm.**

**Sat Feb 1st - The Originals (Formerly the Silhouettes), Sat Feb 8th - Just Bertie, Sat Feb 15th - Outrage, Sat Feb 22nd - Just the Two of Us, Sat Feb 29th - Quiz Night (FREE)**

Entry free to members others £2 on entertainment evenings  
The CLUB may be booked for private functions at reasonable rates.

To arrange viewing, check availability, discuss your requirements or apply for membership contact Tony on 820397 or E-mail whiteheadjack51@gmail.com



**Revsol Property Management Ltd**

**Revsol Property Management Ltd.**  
offer a complete service covering :

- ✓ Management of Property lets both short and long term
- ✓ Holiday Lets
- ✓ Keyholder service
- ✓ Property security
- ✓ Regular and one-off cleaning service
- ✓ Property maintenance

For further information call Duncan on

Main line: 01258 820870 mobile: 07966 016686  
or email revsolpropertymanagement@outlook.com



**All aspects of building work undertaken including:**

- **Extensions**
- **New Builds**
- **Roofing**
- **Renovations**
- **Loft Conversions**

Camelot Builders Ltd  
Farm Office  
East Lawn Farm  
Lawn Crossroads  
Gillingham  
Dorset SP8 5QN  
www.camelotbuilders.co.uk

**Tel: 01747 835422**  
**email: info@camelotbuilders.co.uk**





# HAWTREE & SONS

RIVERSIDE GARAGE, A30 WEST STOUR, GILLINGHAM,  
DORSET SP8 5RJ

MONDAY TO SATURDAY: 7am - 10pm • SUNDAY: 8am - 10pm

MARNHULL STORES, NEW STREET, MARNHULL, DORSET DT10 1PX

MONDAY TO SATURDAY: 7am - 8pm • SUNDAY: 8am - 1pm

Serving the Blackmore Vale for 30 years *Local...Convenient...There for you!*

**SERVICES AT OUR STORES INCLUDE:**

- Chilled wines, lagers, ciders and spirits
- Cigarettes and tobacco
- Extensive range of non food and pet food
- Fresh meat and poultry
- Frozen food and ice cream
- Fruit and vegetables
- Greeting cards and stationery
- Groceries, bread, local milk and free range eggs
- Hot pies and pasties to go
- Local sandwiches produced daily
- Newspapers and magazines
- Postage stamps
- Vapouriz dealer

Proud to stock local fresh meat from Else Butchers



**Visit our in store bakery...**  
*Fresh bread & pastries baked daily*

**ORDERS WELCOME!**

Riverside Garage: 01747 838487  
Marnhull Stores: 01258 820116

**ROYAL BRITISH LEGION  
MARNHULL BRANCH AND CLUB**  
LEGION HALL, SODOM LANE, MARNHULL  
TELEPHONE: 01258 820613  
Clubhouse open hours  
Mon-Thur 8-11.30pm, Fri 8-12pm, Sat-12-3pm, 8-12pm  
SKITTLES (LEAGUE and FRIENDLY) - DARTS - POOL  
LIVE ENTERTAINMENT  
(see Blackmore Vale Magazine or ring for details)  
BRANCH AND CLUB MEMBERSHIP NOW AVAILABLE  
**FAMILIES MOST WELCOME**  
Come along and see what we can offer you  
Branch: [branch@marnhullrbl.wanadoo.co.uk](mailto:branch@marnhullrbl.wanadoo.co.uk)  
Club: [club@marnhullrbl.wanadoo.co.uk](mailto:club@marnhullrbl.wanadoo.co.uk)

Alternate Mondays  
**PRIZE BINGO**  
7.10pm  
Open to everyone

**ADVERTISE HERE**  
**Contact: Rosie Gall - [rosiegall1@gmail.com](mailto:rosiegall1@gmail.com)**

**Williams Florist**  
*floristry & gardening*

Do you have something special to say?

Full florist service available  
Local delivers & Eflorist relay members

*Say it with flowers...*

Station Road, Stalbridge  
Dorset, DT10 2RQ  
Tel: 01963 362355  
Email: [williamsflorists@live.co.uk](mailto:williamsflorists@live.co.uk)  
[www.williams-florist.co.uk](http://www.williams-florist.co.uk)

**MARNHULL VILLAGE HALL**

**MARNHULL  
VILLAGE HALL**  
*Your Village ~ Your Hall*

**MANAGEMENT COMMITTEE MEETING  
MONDAY 17TH FEBRUARY 2020  
AT 7.00 P.M. IN THE VILLAGE HALL**

All user-group representatives and Trustees are invited to the next Management Committee Meeting of the Village Hall. These meetings will probably be held on a monthly basis during the building project and we would appreciate input from all user-groups.

We look forward to seeing you on Monday 17th.

**VILLAGE HALL HIRE CHARGES FOR WEDDINGS & PARTIES**

Local individuals or local non-profit making organisations

	0 - 2 hours	Each extra hour
Daytime (09.00-18.00)	£15.00	£5.00
Evening (18.00-23.30)	£20.00	£5.00

Charges include use of kitchen for tea/coffee making. Full use of kitchen facilities for food preparation - £10 extra.

Wedding hire... £250 per day

**Booking Officer: 07376 911878**

**VILLAGE HALL SUPPORTERS CLUB**

**9 DECEMBER 2019  
DRAW HELD AT WI MEETING**

Prize	Ticket No	Winner
£100	72	A & J Loukes
£60	155	M Wilkins
£50	44	Mrs E Colebrook
£50	84	P & L Wood
£30	236	D Brockett
£30	118	Mrs J Kenworthy
£20	165	Miss H M Smith
£20	1	C Humphries
£15	75	Mr & Mrs F Bryant
£15	107	M B Collard
£10	355	Marnhull Garden Club

**CANCER RESEARCH**

A very big thank you from Cancer Research for the fantastic amount of £241.26 raised in the cancer research charity collection box by the Science Cafe held on the first Tuesday of the month at the Blackmore Vale Inn.

Also a big thank you to Ros Eveleigh for arranging this.

Kind regards , Carol Collis

## **Village Hall Supporters Club**

### **APPLICATION FORM Mar 2020 - Feb 2021**

Name.....

Name must be the same as on your Bank Account, or a winning cheque may not be honoured

Address..... Post Code.....

I/We wish to become a member(s) and purchase..... tickets at £6 per annum each to be entered into the prize draws. I/We enclose a cheque for £..... made payable to "Marnhull Village Hall".

Date..... Signature.....

Send to : Mrs S Blackford, 6 Musbury Close , Marnhull DT10 1JR

## CSJ Stockist

Local Dog Food Supplier  
Complete Dog Food for pets and working dogs

CSJ canine feed uses only top quality, natural ingredients, with an extensive range to meet the needs of all dogs of all ages

More information can be found on the website:  
[CSJK9.com](http://CSJK9.com)

Prices for a 15kg bag start at £13

Free delivery in Marnhull

For enquiries or orders contact:  
Giles Fearn: 01258 820912



- All aspects of tree surgery
- Dismantling and felling
- Pruning
- Tree disorders and solutions
- Tree pest and disease analysis

Telephone 01747 850 253

e-mail [info@hawesarborists.co.uk](mailto:info@hawesarborists.co.uk)

We are very proud to have received Arb Approved contractor status and are covered by the Government accredited Trust Mark scheme.

NPTC Certified • Tech.Arbor.A Qualified  
All work carried out to BS3998 Standards



## OXFORD

Building & Carpentry Ltd

Contact Pete Oxford T: 01258 820850  
M: 07970 156735 [oxfordp@yahoo.co.uk](mailto:oxfordp@yahoo.co.uk)  
Chippets, Chippel Lane, Marnhull DT10 1NN



Foot Care in the Comfort of Your Home.

Corns, calluses, problem nails etc.  
Friendly, female practitioners

[www.bmvfootcare.co.uk](http://www.bmvfootcare.co.uk)

01258 820203 | [gillian@bmvfootcare.co.uk](mailto:gillian@bmvfootcare.co.uk)

## PESTWRIGHT

**THE COUNTY MOLE  
CATCHER**

Complete pest control services  
Friendly, reliable service

**BPCA qualified,**

**Insured**

**Call Jim on  
01963 362292**

## Jill Cook

Counsellor

BACP Senior Accredited  
[www.jillcook.co.uk](http://www.jillcook.co.uk)

I offer support for issues including anxiety, depression,  
relationship difficulties & bereavement

For more information please contact me

07944 669416  
Marnhull & Milborne Port

## Happy Pets and Home Service

House Sitting

Pet Care

Garden Care

Painting and Decorating

Call Juliet: 07773 566425

Peter Jackson  
Funeral Services  
at  
Henstridge

Independent Family owned and run  
Funeral Directors  
24 hour service  
Private Chapel of Rest

Telephone; (01963) 362570

## SAUL MITCHELL PAINTER & DECORATOR

Est. 2004

Maintaining the Past, Designing the Future.

**Mob.: 07787 927455**

[smitchell1852@btinternet.com](mailto:smitchell1852@btinternet.com)

<http://saulmitchelldecorator.co.uk>



- Quick Books & Sage Expertise
- Management Accounts
- Personal & Corporate Taxation
- Book-keeping.

**01258 820709**

Email: [info@accountancyplusdorset.co.uk](mailto:info@accountancyplusdorset.co.uk)  
Contact: Mr Kim Harden, FCA, FCCA  
4 New Street, Marnhull DT10 1PY

## GETTING GREENER IN THE MARNHULL AREA



The climate is changing, and concerns are increasing. Dorset Council have declared a climate and ecological emergency. But what can we, as individuals, do about it? Well, we can't save the world on our own, but we can still do quite a lot.

Last autumn an Eco Day was organised in Marnhull village hall, and many green issues were discussed. The Eco Day wasn't a one-off: people want to do more. And while we can't do everything that's been suggested all at once, three ideas have been selected to start with.

The first will be a meeting to discuss solar power - an energy source we can still make much more use of. We'll meet at the village hall on Monday 30 March, starting at 8 pm. There will be experts there to discuss options and deal with your questions, so make a note in your diaries to come along! There'll be more about the meeting in next month's Messenger.

Another meeting will be held in the village hall in April. The subject this time will be trees and meadows. There is a strong desire in the area to see more trees planted, and we would like to set an ambitious target. This will require effort and funds, of course; and the identification of suitable sites, both for trees - in ones or twos or dozens or scores - and for areas for meadow development and rewilding. Again, look out for more information in next month's edition.

The third initiative is to produce a guide on the '3 Rs' - Reduce, Re-use, Recycle - specific to our area. What can be recycled, where and how, can be a baffling subject; and it can be hard to find out how best to reduce our negative environmental impacts and re-use things instead of discarding and replacing them. The idea here is to produce as comprehensive and simple a guide as we can, to help busy people who want to do more but are not sure how.

These will not be the only green projects we take on - and others are already under way independently. What we'd like to do is share information and bring together the necessary mutual support for all these ideas. Together, as they say, we are stronger!

To do all this, we need people to help in lots of ways. If you'd like to join in, or to express an interest without committing yourself to anything yet, or if you want to suggest other green initiatives that we might take on locally, please leave your contact details on our web page at the Marnhull Messenger site: go to <https://www.marnhullmessenger.org.uk> and follow the links 'In the Village' and 'Clubs & Groups'. Or call Dave Smith on (01258) 268714.

## CAFÉ SCI

### DIVERSITY AND MORE

Marnhull's Café Sci starts its 2020 programme of talks on 4th February at The Blackmore Vale pub at 20.00 when we will hear about biodiversity. Sue Curtin will be giving us context for understanding the importance of biodiversity and Morgan Osman will report on his expedition to the Himalayas where data was recorded on biodiversity and glacial retreat.

We look forward to seeing you on 4th. If you would like to be sent email monthly reminders about upcoming meetings, contact Ros Eveleigh, [rseveleigh@gmail.com](mailto:rseveleigh@gmail.com)

## POPPIN CAFÉ



**HAPPY NEW YEAR TO YOU ALL!**  
January is Panto Time in Marnhull – Oh yes it is - and the POPPin is pleased to have themed the January café around DICK WHITTINGTON in support of this lovely village tradition.

We continue to see many new faces at the POPPin each month which is just lovely. The village hall is always filled to the brim with all you lovely people who come along on the third Friday of each month from 10-12 at the village hall to share a happy morning with us. We serve scrummy homemade cakes baked by our wonderful volunteers, as well as mugs of fresh, filter hot Fairtrade Coffee or Tea. We have lots of plans for more exciting theming of our table decorations throughout the coming year and don't forget to bring along a book/s or magazines to swap/buy for a small donation, as well as visiting the Phoenix Card stall run at the POPPin by Diana Stephens in aid of Help for Heroes. We are also collecting used stamps for the RNIB – so please just bring them along when you next POPPin!

If you haven't been to the POPPin yet, why not make it your new year's resolution – we would love to meet you! Linda, Sue, Jill, Anne, Lynda, Audrey and Rosie (POPPin Committee)

## DEFIBRILLATOR AT THE CROWN

Marnhull Parish Council are delighted to announce that there is now a second defibrillator available for everyone in the village to be able to use at any time of the day or night. As many will have seen it is located outside The Crown Pub. A site which covers a busy area and includes not only the pub itself but St Gregory's Church and School. The PC would like to thank The Crown and Hall and Woodhouse for their very substantial contribution towards this defibrillator. The Crown has suggested that this generosity could well be on-going which would mean that in the future we will be working towards the possibility of a 3rd defibrillator for the village.

There will be free defibrillator training in the very near future – look out in next month's Marnhull Messenger for the date!

## HELP NEEDED WITH SCHOOL WEBSITE

St Gregory's Primary School is looking for someone with the right skills to help them manage their school website which occasionally needs refreshing and keeping content up to date.

If you think you can help, please contact the school's chair of governors, Nick Chapman on [nchapman@stgregorymarnhull.dorset.sch.uk](mailto:nchapman@stgregorymarnhull.dorset.sch.uk)

## CHRISTMAS – IN THE CAR PARK!

A huge thank you to everyone who worked hard to make this a great event. Special thanks to Ed and Michael from Hook Electrics who generously donated their time and expertise to ensure we could see what we were doing! Thanks also to the stall holders for all their wonderful items for sale and to the choir for serenading us throughout the evening. And most of all, thanks to all you lovely villagers who braved the elements (and possibly missing the Strictly final!) and turned out to celebrate with us. Have a very merry Christmas and wishing you a peaceful, happy and healthy New Year.



Last month, after 45 years, I paid a return visit to Stonehenge. It was a clear day and after thousands of years still the mysteries of how those stones got there and why amaze the visitor. When I visited as a child you could touch the stones! Now the carefully managed landscape keeps humans very much in their place as the stones are admired from a distance.

This year 2020 the National Trust celebrates 125 years. In our beautiful part of England, this organisation has contributed much to the preservation of some of our most beautiful gardens and significant parts of our coastline.

Our landscape is important and the preservation of our environment essential to our future. The UN has designated 2020 the year of plant health, so maybe we should each tend our gardens and verges with extra care this year? More importantly 2020 will focus our attention even more on climate change as Glasgow will be hosting the UN climate change summit in November.

With the Lambeth Conference in the summer bringing together bishops from across the world we shall be faced with personal stories of the stark reality of how climate change is affecting the day to day lives of millions of people across the globe and will put our own stewardship (or not) in question.

How shall we respond? It would be great if each Christian community across the diocese focussed its attention in 2020 to doing something for the environment. Maybe working for the next Eco church award? Maybe spending time doing some gardening in your village or neighbourhood? Or setting up a community garden or orchard? As well as continuing to hold our leaders to account for their own priorities and plans. If all of us made one significant change in response to our environment in 2020 what a difference that would make. Pray too for Bishop Nicholas and others called to lead the national church's response during this important year.

'The earth is the LORD's and all that is in it, the world, and those who live in it' Psalm 24:1

The Bishop of Sherborne, Karen Gorham January 2020

## CHURCHES TOGETHER IN MARNHULL

Churches Together will be planning events for Lent (26th February – 9th April) shortly. We are sure that many of you will remember the delightful series of studies based on pictures of the events of Holy Week and Easter last year. We shall do our best to keep up the standard this year! Watch out for details in next month's Messenger.

### World Peace Prayers

Churches Together in Marnhull gather regularly to pray for world peace. Everyone is welcome to join us for thirty minutes of quiet contemplation focussed on world events. The gatherings usually take place at midday on the second Friday of each month in the three Marnhull Churches in turn. The next meeting will be

**14 February - Our Lady's Church**

## ST. GREGORY'S CHURCH



**Morning Prayer is held weekly at 9am on Wednesday at the Rectory**

### FEBRUARY 2020

**Sunday 2nd Candlemas** (Presentation of Christ in the Temple)

08.00 - Holy Communion (said)

10.00 - Parish Eucharist

4pm - 4.30 Tea Service for Families

### Wednesday 4th

11.00 Holy Communion (Said)

2.45 - Children's Service led by St Gregory's Primary School

### Sunday 9th - Third before Lent

08.00 - Holy Communion (Said)

10.00 - Parish Eucharist

### Wednesday 8th

2.45 - Children's Service led by St Gregory's Primary School

Sunday 16th Second before Lent

08.00 - Holy Communion (Said)

10.00 - Parish Eucharist

### Sunday 23rd - Next before Lent

08.00 Holy Communion (Said)

10.00 - Parish Eucharist

### Wednesday 26th Ash Wednesday

2.45 - Children's Service led by St Gregory's Primary School

7.00pm Eucharist for Ash Wednesday

[www.stgregorysmarnhull.org.uk](http://www.stgregorysmarnhull.org.uk)

## ST.GREGORY'S CHURCH SEEKS NEW CHORISTERS

For more information please read the article on

**PAGE 27**



**OUR LADY'S CHURCH**



**Catholic Church of Our Lady, Marnhull & St. Benedict, Gillingham**

**Sunday Masses** - 9.30am & 6pm (Marnhull) / 11am (Gillingham)

**Feast Days and Days of Special Prayer in February**

**2 – The Presentation of The Lord (Feast)**

Commemorates the presentation of Jesus in the Temple, forty days after his birth

**2 – Day for Consecrated Life**

For Vocations to the Consecrated Life: that those whom God calls find a place of contemplation and nurture.

**8 – Day for Victims of Human Trafficking**

For those who have, or are, suffering as a result of human trafficking; for those who offer support to victims; and for all agencies working to combat human trafficking.

**9 – Racial Justice Day**

For justice and peace in the world; and for tolerance, respect and openness to neighbours and strangers

**11 – World Day for the Sick**

For all who are sick and for those who care for them

**14 – Saints Cyril and Methodius (Feast)**

Cyril (+869) and Methodius (+885) evangelised Moravia, Bohemia and Bulgaria and are venerated as the 'Apostles of the Slavs'. Pope St John Paul II proclaimed them Patrons of Europe

**22 – Chair of Saint Peter the Apostle (Feast)**

Celebration of the Cathedra Petri (Chair of Peter), recalls the ministry conferred by Christ on the Prince of the Apostles and continued in an unbroken line down to the present Pope

**23 – Day for the Unemployed**

For all seeking work; and for those who manage the economy, that they may always consider the poor and those who have least

**26 – Ash Wednesday (Day of fast and abstinence)**

Ash Wednesday is the first day of Lent, the season of preparation for the resurrection of Jesus Christ on Easter Sunday.

[www.marnhullandgillinghamrc.org.uk](http://www.marnhullandgillinghamrc.org.uk)

**THE METHODIST CHURCH**



**Sunday Service.** Everyone is welcome to join our service at 10:00am every Sunday and for tea or coffee in the hall afterwards.

It was a delight to welcome so many of you to our traditional candlelit carol service on Wednesday **18th December at 5:00 pm** with tea afterwards in the hall. In the beautifully decorated and softly candlelit church, we followed the story of Jesus' birth through the thoughts and actions of the people involved. Many of the people were ordinary folk involved in extraordinary events – Mary, Joseph, the shepherds. Other actors were more mysterious – wise men, angels. All came together to play their parts in the greatest love story of all. The familiar words and music were a perfect beginning to the week leading up to Christmas.

On Christmas day those of us who remained at home in Marnhull joined visitors in a short celebration of this wonderful event.

Watch out in next month's Messenger for details of events during Lent which begins on February 26th and continues during March until Maundy Thursday on 9th April.

**Youth Work**

Girls' Brigade meets in the Church Hall on Wednesday evenings from 6:00 pm to 7:15 pm. New members (4years old and upwards) are always welcome. For more information, contact the Captain, Rachael Findlay on 07771 897262.

**Hire the Hall.**

Our church hall is a good place to hire for family parties and social or other events for individuals, clubs, societies, and classes. Rates are reasonable and bookings can be made by contacting Mrs. Marlene Plowman on 01258 820869.

**MARNHULL CHURCHES SUNDAY SERVICES**

**Anglican Church of St. Gregory the Great, New Street**

8.00 – Holy Communion

10.00 – Parish Eucharist

Weekday services as advertised  
[www.StGregorysMarnhull.org.uk](http://www.StGregorysMarnhull.org.uk)

**Catholic Church of Our Lady, Old Mill Lane**

9.30 - Mass

6.00 - Mass

[www.marnhullandgillinghamrc.org.uk](http://www.marnhullandgillinghamrc.org.uk)

**Marnhull Methodist Church, Burton Street**

10.00 - Morning Service



St. Mary's Catholic  
Primary School

We had a very busy time before Christmas with lots of different activities. The whole school participated in our annual Advent Day of Faith. It was an opportunity to remind the children that Advent is a time of preparation for Christmas. They participated in reflective activities based on Hope, Love, Joy and Peace. Each child made an advent wreath and cards for the community. The children will work hard to ensure our school community reflects these values during Advent. It is always a pleasure to welcome the parishioners into our school, they are valuable members of our community and the children are always interested in talking to them about their Faith.

Our school was lit up with festive cheer for our PTA Christmas Fair. Faces were painted, Christmas snacks were enjoyed, raffle tickets were sold and despite his busy schedule Father Christmas managed to make an appearance. It was a fantastic event and was great to see the parents, children and teachers enjoying themselves. A huge thanks to those who organised and helped make it a really successful event. It was a bonus that we raised a whopping £600 which will be spent on the added extras for our children.

A very big thank you to all of the family and friends who supported our whole school Christmas performance this year, 'Children of the World'. This wonderful musical allowed us to explore and celebrate the varying traditions of Christmas, from children around our globe. We travelled and celebrated with China, Malawi, Poland, USA, Australia and Ireland, bringing all the children together to celebrate the birth of Jesus.

Our school council have been very busy. They began the year by wishing to organise a school event – St Mary's Got Talent. Our chairperson and secretary very admirably, together with the rest of the school council, put many hours into organising a superb evening which was attended by almost the whole school. There were 2 'acts' from each class and included singing, dancing, joke telling and musical entertainment. The event raised £83 which they decided on this occasion to donate to a charity – 'The Dorset Children's Foundation'.

Our Maths information evening was held to help parents gain a better understanding about how we teach problem solving at St Mary's. The meeting began with a look at the importance of children's understanding of mathematical vocabulary in order for them to be able to solve reasoning and problem solving tasks. The parents were all provided with booklets to help them learn age-appropriate mathematical vocabulary with their children. Following the presentation to parents by the Maths Lead Teacher, the children from each class demonstrated their impressive problem solving skills. The parents commented on how wonderful it was to be able to see the children's progression in problem solving and to gain a clearer understanding about how they could help their children further with this area of Maths.

This term, our whole school topic this term is 'Peering into the Past', with great excitement the whole school gathered in the hall as the time machine transported them back in time....5000 years to ancient Egypt and then on to other time zones.

The children thoroughly enjoyed travelling back in time to meeting key figures and characters from the past. Year 5/6 then learnt about the origins of the Shang dynasty and the significance of dragon bones in helping to interpret the past. They have written their own oracle scripts and made their own oracle bones out of clay. Year 3 and 4 spent the day immersed in hieroglyphics, pyramid problem solving and comparing life in Ancient Egypt to today. Year 2 were tasked by Florence Nightingale to investigate how germs spread and to find out what she did for nursing. They spent time researching, finding out why Florence is known as the lady of the lamp. Following a germ spreading experiment they made posters to display around school to promote cleanliness. They also became portrait artists and created pencil drawings of Florence. Year R/1 were set a task by Isambard Kingdom Brunel to build a strong bridges to help him with his Great Western Railway project. They learnt that the triangle was a strong shape for building with and became mini engineers planning and perfecting their designs. The results were fantastic and passed many complex tests.

If you would like to come and visit the school to see what we can offer your child, contact the school office [office@stmarymarnhull.dorset.sch.uk](mailto:office@stmarymarnhull.dorset.sch.uk) 01258 820417 or just pop in!

## ST MARY'S EXPLORERS

### St Mary's Explorers



We've started the New Year in fine form at Explorers, the children have swung back into action recalling the wonderful Christmas' they have had with their families. This week we have been listening to the lovely story, 'The Tiger Who Came to Tea!' The children have enjoyed setting up their own tea parties in the role play area and inviting the cuddly tigers to join them. In the creative area they have been colour mixing to create their orange tiger masks. They excitedly prepared jam sandwiches to add to their tea party. We were shocked at how much the tiger ate in the story, we then discussed which foods are good for us and which foods are treats. The story begins when the little girl opens the door to a tiger, this sparked lots of discussion regarding stranger danger and the importance of talking to an adult before opening the front door.

We are thrilled with the confidence the children are demonstrating in our setting. They have a wonderful opportunity to develop their speaking and listening skills as they participate in our daily story times. As a theme this term we will be exploring the world of great railways and trains. The children will be enjoying some classic train stories and re-enacting them with our small world trains. We will be jumping on board the train in our train station role play area. We look forward to hearing shouts of "All aboard!" as the children immerse themselves in this play.

St Mary's Explorers is open from 8:45am – 3:15pm every week day during term time and spaces are available for children aged 3 years +, with wrap around care from 8am – 6pm on request. The unit allows preschool and Reception children to work together on lots of key areas of learning, something that OfSTED agree allows younger children to make greater progress. If you would like to have a look around, or come and stay for a taster session, please call 01258 820417 to make an appointment. (Sessions: £4 per hour/£24 for full day, Early Education Funding vouchers accepted and 30hrs funding available)

## ST GREGORY'S C OF E PRIMARY SCHOOL



**"POETRY: THE BEST WORDS IN THE BEST ORDER"**. Our very own Felicity Payton of Badgers class has been crowned at the Sturminster Newton Literary Festival for her wonderful poem named Beautiful World, we are all very proud of her.

*Oh, glittering stars shine so bright  
In the beautiful darkened, shimmering  
night, While in the day the shimmering sun  
Gives happiness to everyone.*

*Water trickles down a stream,  
As the reflections of the sun gleams.  
With the world so wondrous,  
There is love and happiness in all of us.*

### TALENT SPRINGS.

More cause for praise at the school as Charlotte Nolan (Foxes) has been representing St Gregory's at the South West Regional Schools Trampoline Championships. Competing over 2 rounds against girls from across the region Charlotte triumphed and went on to win the overall competition. Next up is the Zonals which will be held in Kent, our best wishes to Charlotte of whom we are very proud.

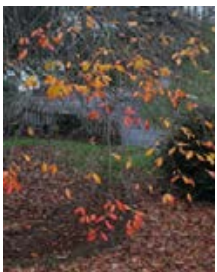
Prior to Christmas the school held a talent contest, we are immensely proud of everyone that took part. Our competition winners all deserve special mention: Wilbur Risley playing a selection of Christmas Carols on his clarinet, Lucy Bell singing 'The Sound of Music' and Ruby Davis with her rendition of 'This is Me' from The Greatest Showman. Thanks to our judging panel: Abbey Robinson (Chair of Pupil Leadership team), Aaron Stewart (Vice Chair), Mr Pearce and Mr Hoare.

### CHRISTMAS IS A TIME FOR GIVING.

St Greg's parents and children shed light on the true essence of Christmas by kindly donating and delivering 2 large food hampers to Gillingham food bank. The children, through this donation, were reminded that there are people less fortunate than themselves.

### "HOW BEAUTIFULLY LEAVES GROW OLD. HOW FULL OF LIGHT AND COLOUR ARE THEIR LAST DAYS"

Last term witnessed the first of our photography competitions trying to capture the seasons, we started with Autumn which is this writer's favourite. Entries were stunning with children from all classes engaging with the great outdoors, anyway a photo can speak a thousand words so sit back and enjoy our winning entries:



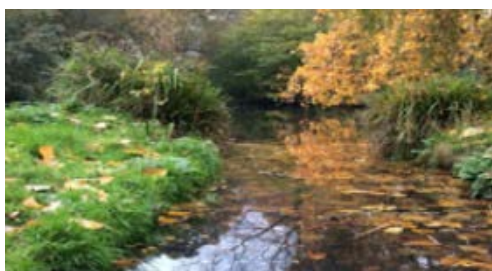
Arlo Bolton – Reception



Lollie Gordge – Yr. 2



Lily Graham – Yr. 5



Rylen Ridout-Perry – Yr. 6



### HEDGEHOG BLOG

**FETCH THE ENGINES, FETCH THE ENGINES, FIRE FIRE, FIRE FIRE!** This term our Reception and Yr. 1 children will be exploring the importance of fire safety, historically they will be learning of the great fire of London (who can remember the date? Answer at the bottom). A visit from Sturminster Newton Fire Brigade is also planned so watch out for that in later months. Also, this year we look to the orient and Chinese New Year, 2020 is the year of the rat. Are you a rat? You are if you were born in 1948, '60, '72, '84, '96, or 2008.



### RABBITS HABITS

**WHAT DO YOU CALL A SLEEPING DINOSAUR? A DINO-SNORE!** Rabbits have commenced 2020 with a new topic: No not terrible jokes, 'Dinosaur Planet', we will be exploring their different types, when they lived, their habitats, special features and why they became extinct. To launch the topic a special package arrived from the Natural History Museum with a request for our help digging out some dinosaur fossils. We are to report our findings and send them back to the museum to assist their scientists. The class had a thoroughly enjoyable afternoon using fossil hammers and chisels to excavate their fossil. We have discovered what a palaeontologist does and followed instructions on how to use their tools properly. The children were all fired up and very excited with some of them bringing in their own fossils and books about dinosaurs from home.

Adding some local relevance to our topic we are also going to be visiting Lyme Regis and the fossil/dinosaur museum learning about Mary Anning and her legacy.



### BADGER JIBBER-JABBER

**DOUBLE, DOUBLE TOIL AND TROUBLE!** Knighton School was the destination for Badgers as our budding Curies and Mendeleevs tried their hands at some science linked to 'Potions', which was the topic this term.

Demonstrations involving colour changing powders were eagerly observed and it was no surprise that the children were fascinated to see how the flame of a Bunsen Burner can change to either orange or green!

The children were lucky enough to conduct their own investigations and loved watching the result of vinegar being added to bicarbonate of soda and food colouring - a big fizzy mess! Finally, as a take home they made their own lava lamps, much fun was had, and the day gave a tantalising glimpse for their future learning. Badgers class would like to thank Miss Skellorn and all the staff at Knighton House for giving us this wonderful opportunity and welcoming us into their Science Lab. The children are already asking when they can go again!



### FOX VOX

**THE FOX AND THE PIG** Last term, Foxes discovered how to dissect a pig's heart, this followed on from their studying about the human circulatory system, our budding physiologists were able to use the exercise to further their learning, drawing diagrams and taking photos to record their findings. We are very grateful for the opportunity given by the local vets.

Continuing the Pig theme, the children read and highly recommend a brilliant book: Pig Heart Boy by Malorie Blackman. A powerful and thought provoking read.

The children ended their topic with a fabulous visit to We the Curious in Bristol, they spent the whole day carrying out many scientific investigations and even had time for a trip to the Planetarium which was out of this world! Toby and Dylan said it was the best trip they'd ever been on!

## MARNHULL BABY & TODDLER GROUP

Happy New Year to everyone hope you had an amazing Christmas.

We had a fantastic Christmas party making Christmas cards, playing Christmas skittles and we even had a visit from Father Christmas and his helper.

It was lovely to see everyone on first week back, hearing all their stories of what Santa bought them.

Here are a few dates for the diary for the Spring term.

23rd January- Chinese new year- Rat

13th February- Valentines day

20th February No toddlers (half term)

5th March - Osborne books stall and world book day.

2nd April- Easter Party

23rd April - Summer term starts.

Emma and Michelle



## MARNHULL MUSIC CLUB

Barbara Collins presented some of her favourites at the October meeting. They were familiar to most of us, and there were nods of appreciation all round as we read the programme.

We had the joyful – Vida Mia tango sung by Domingo, The Lonely Chimes by Rebroff (such a superb deep voice) and Song Bird by Eva Cassidy. Then there were the mournful – Che Gelina Manina sung by Bocelli, Empty Chairs & Empty Tables by Alfie Boe and Michael Ball, Bailero sung by Renee Fleming. We also had orchestral pieces, the Rose Adagio from Sleeping Beauty, Smetana's The Moldau and an extract from Greig's 2nd Piano Concerto and Mendelssohn's 2nd Violin Concerto.

Then the lyrical – Softly Awakes my Heart by Saint-Saens, Judex by Gounod, Claire de Lune by Debussy (played seriously by Victor Borge), The Glass Mountain (which certainly took me back many years, wonderful film) played by Mantovani, and The Gadfly by Shostakovich, ending with Un Suspiro played by Lang Lang.

Finally, Time to Say Goodbye sung by Sarah Brightman – after which we all went home humming some of the melodies. A good evening.

The next meeting is on 18th November, and visitors are always welcome.

## MARNHULL MUSIC SOCIETY

Judy Ramsey put together an entertaining and varied programme of members' choices for our "Holly and Jolly" Christmas celebration. The evening opened with "For unto us a child is born" from Handel's Messiah which had been requested by several members. This joyful work is an essential component of my Christmas. Although not a church-goer, for me it seems to define some sort of sturdy backing fabric to the English way of life and my own upbringing. The Liszt piano concerto that followed was at first contemplative and then twinkling.

The Kings Singers were immensely popular in the 70's and here we had another chance to hear their superlative precision and intriguing harmonies in their rendition of "Cherry Ripe." A fiery recording of the 4th movement of Tchaikovsky's 4th Symphony was utterly breathtaking with its furious attack under the baton of Valery Gergiev.

A contrast, definitely under the heading of "jolly", was provided by Ella Fitzgerald singing "You're the Tops" from the Cole Porter songbook. Who else would rhyme Fred Astaire with camembert? Other "jolly" entries included Eartha Kitt with "Just An Old fashioned Girl" and Judy Garland duetting with Johnny Mercer in "Friendship".

A more traditional note was sounded with "The Carol of the Bells", a charming and melodious little number, and the glorious and intensely stirring opening to Bach's Christmas Oratorio. We also heard the rich and powerful voice of Mario Lanza; one forgets what a great singer he was.

There was much to enjoy in this sparkling concert and I do not have the space to list the wide range of music that we heard. The evening was enlivened with mulled wine, mince pies and a bran-tub.

For our February meeting Shirley Blackford will compile a programme of selections offered by the ladies.

## DOWN THE PUB WITH LUKE WRIGHT



**Sun 9 Feb, 2pm. Blackmore Vale Inn Marnhull.**

**01258 820701**

**Enjoy a pre-show pie & a pint between 12-2pm for just £10 per person when you pre-book!**

Flamboyant, political and riotously funny, Luke Wright creates inventive poems with loads of heart. Part Essex wide boy, part dandy fop, he writes from the sidelines about small-town tragedies and national farce, then performs his work with snarl and spit. Since 2006 he has written and performed nine spoken word shows and two verse plays, touring them to top literary and arts festivals. Alongside his own shows, Luke is John Cooper-Clark's regular support act, performing at venues such as The London Palladium and The Palace Theatre in Manchester. He's won a 4Talent Award, a Stage Award, a Fringe First Award, a Saboteur Award, and a NFBC short film competition at the 2010 Cannes Film Festival. This spring Luke invites you to join him at the Blackmore Vale in for an afternoon of poetry, pies n pints! Touring to Dorset with Artsreach.

*"One of the funniest and most brilliant poets of his generation"*  
The Independent [www.artsreach.co.uk](http://www.artsreach.co.uk)

## GENERAL BUILDER STONEMASON reliability guaranteed

**Extensions - Garages - Garden Walls - Repointing - Chimneys  
Lead Work - Rendering - Plastering - Patios**

**Many satisfied customer references if required  
Probably the cheapest around  
No VAT**

**Ring Barry 01258 820010 (evening) 07966 550081 (day)  
5 Hardy Close, Marnhull DT10 1LG**

## Yenstone Walling Dry Stone Walling and Landscaping All types of stone walling undertaken

Patrick Houchen  
DSWA member  
01963 371123



[www.yenstonewalling.co.uk](http://www.yenstonewalling.co.uk)



## PLUMBWOOD

For all domestic plumbing repairs:  
taps, toilets, radiators, showers  
etc – no job too small.

*Woodwork projects also  
undertaken*

Call Tim and Helen Cronin  
01258 820520/07780 673053

## R & S LEWIS JOINERY

We design & make  
fitted wardrobes  
bookcases & cupboards.  
Hardwood windows  
& doors  
Ham Lane Marnhull  
01258 820467  
Workshop 01963 363862

## Vale Electrics

- New Installations
- Rewires
- Replacement Consumer units
- Condition Reports
- Fault Finding

Tel:01258 821420 Mob:07740403033  
Email:valeelectrics@hotmail.co.uk  
8 Plowman Close, Marnhull, DT10 1LB



## Dorset Forge & Fabrication

Chris Hannam

01935 50 82 81 - 07950 33 75 76

Elm Yard, Three Elms Inn, North Wootton  
Sherborne DT9 5JW

- Traditional and Contemporary Forge Work
- Design Service
- Gates and Railings
- Garden Architecture
- Balconies and Handrails
- Restoration
- Cast Iron Repair
- On-site Welding and Fabrication Service
- Shot Blasting and Painting Service
- Brick, Stone and Flintwork

chris@dorsetforgeandfabrication.co.uk  
[www.dorsetforgeandfabrication.co.uk](http://www.dorsetforgeandfabrication.co.uk)



Providing competitive Property Maintenance Services for both  
residential and commercial properties to home owners, Letting  
agencies and Landlords throughout Dorset, Somerset and Wiltshire.

Services include:  
Painting & Decorating, Internal & External Property repairs,  
Kitchen and Bathroom re-modelling, House clearances

Revsol Property Services are also licensed waste carriers  
and undertake house clearances and deep cleans

For further information call Duncan on Main line: 01258 820870  
Mobile: 07966 016686 or Matt on 07483 822245  
email [revsol@outlook.com](mailto:revsol@outlook.com)

**MARNHULL ENTERTAINS**  
in association with  
**DORSET MOVIOLA**  
presents  
**KNIVES OUT**



Acclaimed writer and director Rian Johnson pays tribute to mystery mastermind Agatha Christie in KNIVES OUT, a fun, modern-day murder mystery where everyone is a suspect. When renowned crime novelist Harlan Thrombey (Christopher Plummer) is found dead at his estate just after his 85th birthday, the inquisitive and debonair Detective Benoit Blanc (Daniel Craig) is mysteriously enlisted to investigate.

In Marnhull Village Hall  
**Tuesday 25th February at 7.30 pm**  
Doors and licensed bar open 7.00 pm

**Tickets: £5.00**

Available from:  
Robin Hill Stores - 01258 820959  
or Marnhull Stores - 01258 820116

## MARNHULL PLAYERS PRESENT...

THE MARNHULL PLAYERS  
PRESENT  
**Dick Whittington**  
MARNHULL VILLAGE HALL  
FRIDAY 31ST JANUARY 7PM  
SATURDAY 1ST FEBRUARY 2PM AND 7PM  
SUNDAY 2ND FEBRUARY 2PM  
ADULTS £5  
CHILD £3 - UNDER 16s  
COME ALONG AND JOIN US FOR SOME  
FUN REFRESHMENTS AND RAFFLE  
TICKETS ON SALE NOW FROM  
ROBIN HILL STORE AND SPAR

## ICONS: CELEBRATING THE LEGENDARY DIVAS



### Fundraising in support of The Pink Ribbon Foundation

Venue: The Exchange, Sturminster

Date & Time: 7th February 2020, 7.30pm

Ticket Prices: From £16.50

**Box Office: 01258 475137**

Unleash Your Inner Diva, with this fabulous new concert spectacular: ICONS - Celebrating The Legendary Divas! Coming to a theatre near you!

Join this sensational cast, as we take you through the biggest divas of the decades. Performing the hits of legends such as Cher, Aretha, Whitney, Dusty, Tina, Barbra & so many more.

Incredible Costumes, Stunning Vocals & Slick Choreography, it's the night out you've been waiting for – Grab Your Hairbrush, Grab The Girls and #UnleashYourInnerDiva

### Its Showtime, cast is ready, props are ready, lights are ready, music is ready are you ready?

There is still time to get your tickets to see this years village pantomime Dick Whittington. Tickets are on sale at Robin Hill Store and Spar. Adults £5 and under 16 £3.

We are really looking forward to performing and can't wait to see you there, there will be a raffle and refreshments at every performance.

Don't forget to join in with this years fun.

Performances are on:

Friday 31st January 7pm

Saturday 1st February 2pm and 7pm

Sunday 2nd February 2pm.

Look forward to seeing you there

The committee and cast.

## CHILD OKEFORD VILLAGE HALL FILM NIGHT

We are showing 'Downton Abbey' (PG), starring Hugh Bonneville and Maggie Smith, on Friday, 28th February at 7.30pm,

Tickets £5 at the door or in advance on 01258 860113.



**CHAFFERS**  
ESTATE AGENTS

Incorporating



Experts in local knowledge

**SALES, LETTINGS, COMMERCIAL, SURVEYS**

**More Properties Urgently Required!**

Gillingham \* Shaftesbury \* Sturminster Newton \* Wincanton

**Tel: 01258 473900**

Sturminster Newton  
**Agility Club**

All Ages  
Welcome

- Secure indoor venue
- Day and evening classes
- Reasonable rates
- New Canine Hoopers classes
- Qualified Canine Hoopers world instructor

07496 033069 or 01747 838079  
maureen469@yahoo.co.uk

**JAMIE FOX  
& SON**

GROUNDWORKS & FENCING

**07950 259163**

**GROUNDWORKS**

**FENCING**

DRAINAGE • PATIOS • FOOTINGS • PONDS  
CONCRETING • MINI DIGGER • DUMPER HIRE • LANDSCAPING

AGRICULTURAL • EQUESTRIAN • DOMESTIC  
COMMERCIAL • SECURITY

*Struggling with Anxiety,  
Depression*

*Relationships, Identity*

*Grief or loneliness?*

**0774 702 4880**

**admin@w-p-c.org.uk**

**www.w-p-c.org.uk**

for professional, affordable  
face to face individual or  
couple counselling locally



Wessex  
Psychotherapy  
& Counselling

**BRAMALL GARDENS LTD**

**DESIGN—LANDSCAPING—MAINTENANCE**

EXPERIENCED IN ALL ASPECTS OF GARDENING

FAST AND EFFICIENT

ALL RUBBISH REMOVED



: 01258 820394 MOBILE : 07971 793 872



**DARREN KENDALL**

**STOVE INSTALLATIONS  
& CHIMNEY SWEEPING**

Fully qualified HETAS approved registered installer.

From opening up your fireplace, carrying out  
chimney remedial works, fully installing and  
self certificating new wood burning stoves.

HOME: 01258 820804

MOBILE: 07813 607234

Building works carried out by an NVQ/City & Guilds fully qualified builder



**RESERVED  
FOR  
LOUISE  
HALLET**

## FROM THE CHURCHES

I am feeling particularly confused! I am my own man! Yes! A sentient being, as the science fiction writers may describe human life! And yet, today I came to a disturbing conclusion. Although I have a good level of I.T. knowledge and experience I have eschewed the likes of Alexa and Siri at home, I have discovered that my working day is being controlled by Artificial Intelligence (A.I.)....in a most unusual way!

On my daily trip to work I call in at a well-known store in Gillingham to purchase the wherewithal to keep the my mind and body sustained during the day at work. That is to say – a supply of milk and coffee and sweeteners. No sugar allowed!

I invariably use the automatic Point-of-Sale tills, and regularly find my sale is disrupted because the POS machine can't "think" as fast as I can, and several days per week I have had to seek support from assistants. But today it clicked. Firstly, I have to scan an item slowly, with an action akin to a move in Tai-Chi. (If you don't get it right, you must learn the timing and direction of the move until you get the "beep") the POS informs you the item has been "scanned", and then you are free to repeat the motion with another item. If I try to scan too quickly, I get "Item not recognized" and help is needed from the very helpful human assistants, delaying at the till for several minutes.

Today, the penny dropped. Here is a machine which is giving me a machine-generated "Mindful moment". Don't get me wrong, I understand the great move in so many fields towards Mindfulness, and see it being used in so many ways in education, and in my own field, the Justice system. As a Deacon, my daily routine of daily prayer gives me calm and prayerfulness in my life, and I didn't think I had any need for "mindfulness". However, I must admit that slowing down my purchasing had a positive effect on my mood during the journey to work!

However, I will need a bit more convincing before Apple's Siri, Amazon's Alexa, or any other Artificial Intelligence becomes a controlling part of my daily life. My life revolves around the daily prayers of the Church which brings calm and peace into my life.

Deacon Michael Turnbull - Our Lady's Church, Marnhull  
R.C. Chaplain, HMP Guys Marsh

## MARNHULL PARISH COUNCIL MUTTERINGS

### Allotments.

Invoices will be sent out in March covering the year from April 2020 – 31st March 2021. We do have some allotments available for information contact the Clerk details above.

We also have one who has not paid for 2019 it will be added to the 2020 Invoice.

### Other Issues

See separate article on the installation / location of a second defibrillator

Drive way recreation ground, Grass cutting, Shipping container,

Cricket club Shed, Planning Applications and Finance

Village Hall Proposals, Car Park Christmas, Neighbourhood Plan

and Marnhull ECO project

**Why not come to the next meeting in the Village Hall on 3rd February at 7pm and or visit our web site:**

**<https://marnhull-pc.org.uk>**

## MARNHULL GARDEN CLUB

Marnhull Garden Club started off 2020 on a wild, wet and windy night with a very good attendance to hear a fascinating talk from Steve Oliver, Rivers Conservation Officer, Dorset Wildlife Trust.

In Dorset, their main activities are in influencing councils; raising awareness of wildlife issues that may be threatened by planning and urban expansion; improving the appreciation of wildlife via its wildlife centres and working on "Living Landscapes" conservation projects, an initiative to link up the 45 reserves and centres across the county by creating "corridors" for wildlife from the surrounding farmland and countryside.

Membership is their only regular source of income and for every £1 received in the form of subscriptions or donations, 79p is spent on Dorset's wildlife for us all to enjoy.

As a charity DWT also rely heavily on volunteers, and have over 1000 who actively give of their time to the extent of contributing 3000 days of work per year – although, as you've probably guessed, more are always welcome and needed.

Our nearest reserve is Fontmell Down, an internationally important area of unimproved chalk grassland and shrub. The key is that it is unimproved, i.e. has never been cultivated (mainly due to the steeply sloping nature of the site) and so the thin soil has very few nutrients – meaning a great diversity of species can flourish without any one becoming dominant. It is currently listed as an Area of Outstanding Natural Beauty, a Site of Special Scientific Interest and (a European designation) a Special Area of Conservation. One of rare plants that can be seen here is the early gentian, endemic to the southern areas of the UK and can be found flowering on the south facing slopes in early June.

There are also 10 species of orchids thriving there. In fact, you can count 50 different plant species in 1 square metre! And of course, this all attracts the insects, in particular the chalk specialist butterflies like the Adonis Blue and Chalk Hill Blue and is also the only Dorset site where you can find the Silver Spotted Skipper.

Upton Heath, near Poole, another DWT reserve, is an area of very rare lowland heath where all 6 UK reptiles can be found. In case you're wondering...Smooth snake, sand lizard, common lizard, grass snake, adder and slow worm!

We've all probably heard of Brownsea Island, famous for their red squirrels and bird life and in west Dorset Kingcombe Meadows boasts areas of hay meadows, all organically managed with cattle and sheep.

Some of the key indicators of a healthy environment are flourishing here in our county, in particular otters, bats and dormice.

Otters obviously need healthy rivers and water quality to thrive – after all, they need to eat 1kg of fish, frogs, voles and other delights a day!

There are 18 species of bats in the UK and how lucky that 16 of them are found in Dorset, there's even a maternity colony for the Bechstein's Bat! (Incidentally, did you know they can live up to 21 years old!).

The Dorset Wildlife Trust really deserve our support for the crucial work they do in ensuring a future not only for the wildlife and creatures mentioned here, but for us and future generations.

Take a look at the website for further information and membership details: <https://www.dorsetwildlifetrust.org.uk/>

Our next meeting is our AGM on February 11th where we will have our usual social gathering and American supper following the business part of the evening. See you there?



# Boilerwise Ltd Specialist Boiler Engineers

Repair, Service, Maintenance and Replacement of OIL and GAS Boilers.  
Heating System Fault Diagnosis and Repair. Landlord Certificates,  
Systems Surveying and Power Flushing.

**01258 474605**

24hr Gas Safe and Oftec Registered Engineers



572546



C6413

©LW



## COMPTON SMITH INTERIORS

Suppliers of well-known specialist Paints, Wallpapers  
and Fabrics. (Farrow & Ball, Little Greene, Colefax &  
Fowler, Zoffany, Kate Forman and many more brands)  
Full interior design service.

**Monday to Friday: 08.00am to 5.30pm**  
**Saturdays: 09.30am to 1.00pm**

10d Wincombe Business Park, Shaftesbury SP7 9QJ  
Tel: 01747 850150 info@comptonsmith.co.uk

[www.comptonsmith.co.uk](http://www.comptonsmith.co.uk)



**EVERYBODY WELCOME**

**A GREAT VENUE TO HIRE**

- Family Occasions
- Birthdays
- Weddings
- Funerals
- Christenings
- Meetings & more

Come in for a bite to eat?  
Marsh Ln, Henstridge,  
Somerset, BA8 0TG

**01963 362789**  
[henstridgegolfandleisure.co.uk](http://henstridgegolfandleisure.co.uk)



- Renovations • Extensions • New Builds**
- Conservation Works • Listed Works**
- Loft Conversions • Property Maintenance**
- Kitchen & Bathroom Installation**

Tel : 01963 363002 Mob : 07886 957385

[www.regencyrenovations.co.uk](http://www.regencyrenovations.co.uk)

# The Curtain Man



- Curtains ~ Blinds
- Carpets ~ Vinyls
- Tracks ~ Poles
- Fabrics ~ Cushions
- Re - Upholstery
- Measuring & Fitting Service

Burton Street, Marnhull, Sturminster Newton,  
Dorset. DT10 1PH

T: 01258 821117

E: [thecurtainmanshop@gmail.com](mailto:thecurtainmanshop@gmail.com)

## DORSET TECH ON THE HIGH STREET



### MARNHULL'S VERY OWN WEB AGENCY HAS EXPANDED TO A NEW OFFICE ON GILLINGHAM HIGH STREET

With the lease coming to a close on the education centre, we've started our move to the new Superhero HQ on Gillingham High Street, just opposite Lidl. Some of our team are now based from this fun new office, complete with a "geek themed" shop combining Sci-fi, superheroes and technology.

The expansion has enabled some new technology based services/products to be added to their offering and we've been really impressed with the amount of initial support we've received from local shoppers.

The team have previously used mainly remote workers from across the country, but are now recruiting for a number of roles to be based at the new office.

To find out more about the new job roles and to apply - visit:

[www.dorset.tech](http://www.dorset.tech)

## DIGITAL CHAMPIONS - FREE HELP

### GIFTED A GADGET THIS CHRISTMAS? FREE AND FRIENDLY HELP IS AVAILABLE

If you have been gifted a computer or gadget over Christmas and don't know how to switch it on or make the most of it then help is at hand.

There are over 75 Digital Champions volunteering in Dorset libraries to help people with computers, tablets, phones and more. Most have gained experience from their professional careers.

Around 21% of people are not confident using the internet - that's around 150,000 people across Dorset. And 70,000 of these have never been online.

Not everybody has access or the desire to use computers but attending a session may spark an interest. Many learners have bought a tablet or similar, because of the programme.

People without a device can learn free of charge on the library facilities. The sessions are held in a friendly environment and you go at your own pace.

Some Dorset residents say they feel excluded if they are offline and that learning with a Digital Champion boosts their confidence and helps them stay safe and independent.

Thanks to the Superfast Dorset team it is easy to find your nearest volunteer. Call Dorset's Digital Champion helpline on 01305 221048 and we'll answer any questions about the support available. All our help is free.

## DIGITAL CHAMPIONS - CYBER SECURITY

### DORSET DIGITAL CHAMPION AND CYBER SECURITY EXPERT RELEASES NEW BOOK TO HELP PROTECT YOU FROM CRIME

An essential guide to help people take steps to protect themselves from cyber and identity crime is released this month from the British Computer Society.

The guide has been co-written and edited by Andy Taylor, a volunteer Digital Champion with Dorset Council who also works full time as an independent information security adviser following a career in the Royal Navy.

Andy is based at Sherborne Library on a voluntary basis, providing free support and advice to anyone needing help with basic digital skills. He is one of 75 Digital Champions volunteering in Dorset libraries to help people with computers, tablets, phones and more. Most have gained experience from their professional careers.

As Andy explains in his new book, information security fraud has evolved more rapidly than any other crime with the onset of computers and the digital world. Says Andy, "We mitigate against crime and injury everyday by following set rules and best practice. As an analogy, we drive vehicles and take a lot of risk going from A to B but we follow the rules of the road to stay safe. We can't take the risks away, but we know where they are and take steps to avoid injury. The same applies to information security. Paying by debit card on a reputable website, carries a risk, but it is very small so we take it. The risks increase significantly though when connecting to an insecure Wi-Fi where the credentials are unclear."

Take steps to protect yourself against cyber and information crime

Consider using Paypal, it is very secure - <https://www.paypal.com/uk/home>

Never put any financial information including banking or credit card details in an email, it is not secure. Be quick to install the latest versions (patches) in software. Criminals look for the weaknesses in the old versions to exploit.

Protect your documents. Always shred all discarded documents that contain personal information (including name and addresses) and recycle using a trustworthy document destruction company. An advantage that identity and cyber criminals have on their side is the time to sift through and pull together information from everywhere.

To get help from a Digital Champion simply call 01305 221048 and we will match you with a friendly volunteer in your own area who will help you feel right at home in the digital world.

Role Reversal: Alan Turing cracked code for good, now it is criminals doing it. Dorset Digital Champion pays homage to the father of computer science, image from The Sherborne Community Mural.





**AJS Plumbing & Heating**  
Plumbing & Heating Engineer

Tel: 01963 400503 or 07814 038852  
Email: [office@ajs-plumbingandheating.co.uk](mailto:office@ajs-plumbingandheating.co.uk)  
Website: [www.ajs-plumbingandheating.co.uk](http://www.ajs-plumbingandheating.co.uk)



Boiler Servicing & Maintenance  
Air Source Heat Pumps/Ground Source Heat Pumps  
Bathroom Installation Underfloor Heating  
General Plumbing  
Landlord Certificates & Power Flushing



# TAXI – CAR



*Courteous Lady Driver*  
Tel: 01258 820526  
Mobile: 07929 983095

# HOOK ELECTRICAL CONTRACTORS

Domestic Commercial Ecclesiastical  
*All Aspects of Design, Installation, Inspections & Repair works*

Contact Ed Cudlip on T: 01258 820161 M: 07956281644  
E: [hookelectrical@gmail.com](mailto:hookelectrical@gmail.com)



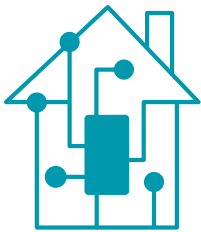
# ORCHARD CARS

Private hire and courier service

Local and Long Distance  
24 hour airport service

**01258 472395**

Operated by Andrew Budd



## Ben Hannam Electrical Contractor

All aspects of electrical work undertaken

- New installations and rewires
- Alterations and additions
- Consumer unit (fuseboard) upgrades
- Fault finding and repairs
- Condition reports
- Heating controls and systems

4 Musbury Close,  
Marnhull



Tel: 01258 808 329 • Mobile: 07914 760 295 • Email: [benhannamelectrical@gmail.com](mailto:benhannamelectrical@gmail.com)

## R.M. MOGRIDGE CONTRACTING LTD

*For All Your Construction Needs*

- Commercial • Domestic • Agricultural • Equestrian
- Excavation • Ground Clearance • Spoils Disposal • Foundations
- Drainage • Septic Tanks • Concreting • Tarmacing • Paving
- Oversites • Driveways • Kerbing • Ponds • Lakes • Synthetic Lining

*For Advice & Free Quotations*

Tel. 01963 363208 or 07836 747895

E.mail: [rmmogridgecontractingltd@btconnect.com](mailto:rmmogridgecontractingltd@btconnect.com)

# TURKS GARAGE

Marnhull Road,  
Hinton St. Mary,  
Sturminster Newton  
Established 1988

Cars & Light  
Commercial



**SERVICING  
& REPAIRS**

Petrol & Diesel

**01258 472686**

## SPEED OF TRAFFIC ON B3092

### LET US MAKE A NEW YEAR RESOLUTION!

My letter in the August "Marnhull Messenger" referred to the speed of traffic in Salisbury Street (B3092).

The current speed limit of 40 mph is too high, and is not adhered to by a large amount of the traffic using the road.

The reply in October from the Parish council made me wonder whose side they are battling for. It would seem it is not the residents they represent!! The reply seemed to justify the status quo, and made excuses for doing nothing. It read like a diatribe from the civil service, with additional comments from the Chairman telling me that the Parish cannot afford a speed indication device (SID) to try and slow things down. I and my fellow citizens are not interested in the workings of committees or the difficulties involved that are put in place to keep public servants in a job. We are interested in results and the safety of us all!

All the adjacent villages have a 30mph limit on the B3092, and also have speed indication devices (SIDs) in play.

In addition, my comments were reinforced by Grace Penny's letter in the November edition.

When in November I received my copy of the "Dorset Council News" what do I find?



## Speed reduction success

**A Speed Indicator Device (SID) in Wool has helped to reduce the speed of traffic travelling through the village.**

Before the SID, on average 569 vehicles were travelling over 35mph between 7am and 7pm; during its placement in the village this dropped to 142. Vehicles travelling over 40mph in the 40 limit dropped from 160 to 31 between 7am and 7pm during the SID placement.

There are SIDs all around the county, from Alderholt and Gillingham to Lyme Regis and Upwey.

If you would like a SID for your community, email [sids@dorsetcouncil.gov.uk](mailto:sids@dorsetcouncil.gov.uk)

Come on the Council, let's have some action without the excuses, and if you don't believe that the road is dangerous come and spend an hour on the pavement outside my cottage. I will provide a chair and a coffee and a large brandy after your time is up to get over the experience!

Which shall we do first - the application for a SID or a reduction of the speed limit to 30 mph? Or better still, both!

Happy New Year, John D Nagle, Corner Cottage, Salisbury St

## NEWS FROM DORSET TRADING STANDARDS

### WELLBEING SUPPORT FOR DORSET FARMERS

One area of work that people don't normally associate with trading standards is animal health and welfare.

We have a small team of officers who are responsible for farm animal welfare and disease control. There is a lot of legislation aimed at licencing the movement of farmed animals with the aim of controlling some of the nasty 'exotic' diseases that threaten the farming industry such as foot & mouth, swine fever and avian influenza.

The team is also responsible for ensuring the welfare of the animals whilst on the farm, being transported, or being sold at market. These welfare standards are very simple – the animal should be fed a sufficient diet, have clean water to drink, somewhere dry to lie down and to be treated if they are ill.

The vast majority of farmers easily meet or exceed these standards, but occasionally we come across cases where the farmer is not doing enough. This can sometimes be down to financial difficulties, but more often than not it is because the farmer has mental health problems. Some farmers can become very socially isolated and with a busy farm to run they find it difficult to find the time to go to their doctors or talk with others.

There are some excellent organisations who can offer help and support to farmers who are struggling. One example is a charity called Farm Community Network (FCN). They have a team of volunteers in Dorset, many of who are farmers themselves, so they really do understand the problems faced in the farming industry.

If you or someone you know could benefit from talking with a sympathetic person who understands farmers and rural life then call the Farm Community Network on 03000 111999.

### DORSET PERENNIAL GROUP

We are a group of gardening enthusiasts who, in addition to visiting local gardens during the summer months, hold two indoor meetings each year. Our next meeting is in Durweston Village Hall on the 29th February from 1.30 pm when horticultural expert Andy McIndoe, formerly managing Director of Hilliers Garden Centres and winner of 25 Chelsea Gold Medals, will talk about 'Planting for Wildlife'. Everyone is most welcome to come along. Members £1, non-members £5 to include afternoon tea and cake. For further details please contact Dianne on 01258 861566.

### CHILD OKEFORD CENTRE FOR CARE AND LEARNING (COCCL)

We hold a series of talks of general interest during the winter months. Our next talk is on the 10th February when we welcome a speaker from Dorset and Somerset Air Ambulance. Meetings are held in The Ark at St Nicholas School, Child Okeford and all are welcome. Doors open at 7pm for 7.30pm. £5 to include refreshments. Further details from Rosemary on 01258 861621.



**CLOCK HOUSE  
Bed & Breakfast**  
Burton Street, Marnhull

Charming, peaceful, tucked away B&B in the centre of the village. Clock House offers four ground floor, ensuite bedrooms with terrace and garden access and a guest living room with woodburning stove. Dog friendly.

**Discounted rate for Marnhull villagers booking direct.**



Telephone: 01258 820645  
[info@clockhouse-marnhull.com](mailto:info@clockhouse-marnhull.com)  
[www.clockhouse-marnhull.com](http://www.clockhouse-marnhull.com)

**POPPIN  
Café**



**Open 3rd Friday of each Month  
10-12 noon, Marnhull Village Hall**

Pop in, meet friends and join us for our own "Special Blend" of:

**Coffee or Tea & Homemade Cake  
For only £1.50!**

Swap or Buy (for a small donation), recycled Books and Magazines. Garden Produce & Flowers through the Summer

**EVERYONE WELCOME!**

THE POPPIN CAFE IS A 'NOT FOR PROFIT' COMMUNITY PROJECT  
Contact: Linda 01258 820131

**E C SERVICES**

- PAINTING & DECORATING
- WALL & FLOOR TILING
- PROPERTY MAINTENANCE



For further information and a FREE Quote  
Call 07966932869  
Popes Farm, Marnhull, DT10 1NU

[www.Back2Market.com](http://www.Back2Market.com)

**REMOVALS - PACKING - STORAGE - CLEARANCE**



**Contact us for your free, no obligation quote**

Phone: 01963 400352

Freephone: 0800 2425012

Mobile: 07853 275379

Email: [enquiries@back2market.com](mailto:enquiries@back2market.com)

Website: [www.back2market.com](http://www.back2market.com)

## SPRINGHEAD EVENTS

**Springhead**  
a rural centre for creative and sustainable living

[www.springheadtrust.org.uk/events](http://www.springheadtrust.org.uk/events)

**Sunday 2 February, 2-3.30,**

Storytelling and Indian music workshop. Before the performance of The Ramayana later, explore the colourful and vibrant world of Indian mythology and music with storyteller, Emily Hennessey and musician and composer, Sheema Mukherjee. Limited places. Tickets £8 from Artsreach [www.artsreach.co.uk](http://www.artsreach.co.uk) or Springhead.

**Sunday 2 February, 5.00pm,**

Artsreach presents The Ramayana. Storyteller Emily Hennessey and virtuosic musician Sheema Mukherjee conjure up a vivid, wild and beguiling world in this retelling of the much loved Indian epic. Expect the unexpected. Tickets Adult £10, Friend of Springhead/U 18, £8. Tickets from Springhead or [www.artsreach.co.uk](http://www.artsreach.co.uk)

**Thursday 13 February,**

10-4 – open garden in conjunction with the Shaftesbury Snowdrops' Festival. The beautiful lakeside gardens at Springhead will be open to visitors on with plants for sale and the café open for tea, coffee, cakes and light lunches. Admission is £3.50 with Friends of Springhead and children under 16 free. Dogs on leads are welcome and the gardens are accessible to assisted wheelchair users.

**Also on Thursday 13 February**

at 3.00pm, we are delighted to welcome harpist Sarah Deere-Jones who will run a **harp workshop**. Sarah has performed original and traditional music for harp and voice throughout her career, and has been a guest artist at the major harp festivals around the world including the Edinburgh Harp Festival UK, Somerset festival in New York, Blue Mountain Harp Holiday Australia, Wales International harp festival, Big Sky in Montana USA and the Lorient and Dinan Festivals Brittany. £20, very limited spaces so please book early.

**Sunday 2 February, 2-3.30,**

Then at 7.30 Sarah will perform a concert accompanied on guitar by her husband Phil Williams. Her music is an exciting blend of subtle and dazzling arrangements of traditional tunes and haunting singing of folk songs as well as her original pieces for harp which have broken new ground for the lever harp and have been included in exam lists for harp students around the world.

Through her historical research into the instrument she has unearthed a history of the harp in England that goes back to the 10th century, making it a long ignored but entirely suitable instrument for playing traditional music and songs of the English genre. So as well as some Irish and Scottish staples the majority of her music is from the English tradition, particularly southern England and Dorset where she was born and brought up.

Adult £10, Friends of Springhead and U 18 £8. Tickets from Springhead or [www.ticketsource.co.uk](http://www.ticketsource.co.uk)

**THE SPRINGHEAD TRUST FONTMELL MAGNA SHAFTESBURY  
DORSET SP7 0NU, TELEPHONE : 01747 811853**

**[WWW.SPRINGHEADTRUST.ORG.UK](http://WWW.SPRINGHEADTRUST.ORG.UK)**

**[INFO@SPRINGHEADTRUST.ORG.UK](mailto:INFO@SPRINGHEADTRUST.ORG.UK)**

**REGISTERED CHARITY NO. 1112083**

## NEWS FROM DORSET TRADING STANDARDS

### WHAT CONNECTS DORSET TRADING STANDARDS AND SCUBA DIVING?

Suba Diving is an exhilarating, popular past-time in Dorset and it's not hard to see why. The cliffs of the Jurassic coastline give way to an underwater world of shipwrecks and sea-life to explore and enjoy. With all the wonder it is easy to forget just how dangerous, and how vulnerable, a diver is. While under water they are completely reliant on the contents of the tank of air strapped to their back for air. If this air is contaminated, or not of the right quality, there are very real dangers. Most divers will understand too much carbon dioxide or carbon monoxide in the tank can have fatal consequence.

So what safeguards are there for divers purchasing air? In all likelihood, the tank would have been filled by a dive centre and supplied as part of a commercial transaction. And, just like any other commercial transaction for consumer products, the supplied air must be safe for consumers to use.

To help local dive centres ensure the quality of their air Dorset trading standards service has operated a Divers Clean Air Scheme for over 25 years. Although voluntary, I'm happy to say most, if not all, of the diver's air suppliers in the area are members. Each member has a sample of their air periodically tested to the recognised standard. The levels of oxygen, carbon dioxide and carbon monoxide among others are all checked to ensure they are within safe limits. This gives the dive centres, and divers themselves, confidence that the air supplied will be of the

expected standard allowing the diver to immerse themselves in the incredible beauty of beneath the Dorset coast.

### ST.GREGORY'S CHURCH SEEKS NEW CHORISTERS

There are relatively few village churches which boast a 4-part choir and St.Gregory's Church is hoping to recruit more choristers to keep that wonderful tradition alive.

The choir leads the worship during the weekly Sunday morning services and features in all the major festivals such as Christmas and Easter.

In recent times the choir has presented its own concert, and joined forces with other choirs to sing music on a larger scale. There are opportunities for choristers to sing duets and solos as appropriate.

We sing music from the 6th century to the present day.

One of our former choristers is currently studying music at university and another continues to sing in her university choir.

Rehearsals are held every Thursday in church from 7.00pm – 8.00pm. We aim to achieve high standards of singing and musicianship; rehearsals are relaxed and friendly, but purposeful. Children normally start from the age of 9 and we welcome families into the choir.

Experience is not necessary. All we ask is that choristers are able to pitch accurately, show interest and enthusiasm, demonstrate a good level of commitment and are willing to be a member of a terrific team.

Would you like to be part of a richly varied programme for 2020, develop your vocal technique and join our friendly, dedicated choir?

Have a chat with Stephen Binnington (Organist & Choirmaster) after a Sunday morning service to find out more or email: [marnhullstgregs.music@gmail.com](mailto:marnhullstgregs.music@gmail.com)

Research suggests that singing in a choir can improve a person's well-being – why not give it a try?

**BARTLETT  
CONTRACTORS LTD**

AGRICULTURAL CONTRACTORS  
COMPLETE AGRICULTURAL CONTRACTING SERVICE

CIVIL ENGINEERS: HEAVY AND RURAL  
OPERATED PLANT HIRE, HAULAGE, LANDSCAPING, FENCING,  
LAND DRAINAGE, HEDGE TRIMMING,  
LAKE AND POND CONSTRUCTION

TRACK REGENERATION  
POTHLES TAKEN OUT IN ONE PASS,  
QUARTER THE PRICE OF RESTONING THE SURFACE. CEMENT  
CAN BE INCORPORATED



SUPPLIERS OF OOLITIC LIMESTONE, TURF, TOPSOIL,  
SAND, GRAVEL, SCALPINGS AND MORE

**01258 472419**

Web: [www.bartlettcontractors.co.uk](http://www.bartlettcontractors.co.uk)

The **co-operative** funeralcare



✓ Pre-paid funeral plans ✓ Free bereavement centre ✓ 24 hour service

**GILLINGHAM • 01747 824738**

2 High Street, SP8 4QT

**SHAFTESBURY • 01747 824738**

Greenacre House, Salisbury Road, SP7 8BS

[funeralcare.co.uk](http://funeralcare.co.uk)



southern coop

**WORD of MOUTH  
HOME IMPROVEMENTS**  
PROFESSIONAL, RELIABLE, LOCAL

- Painting – interior/exterior
- Decorating
- General building maintenance
- Guttering – clearing/replacing
- Roof repairs
- Bricklaying
- Re-pointing
- Carpentry
- Tiling
- Paving
- Window replacement/installation

Please call Andy for a free quote

**Marnhull 01258 821427**

**Mobile 07939 196384**

Email: [yaffle1@hotmail.co.uk](mailto:yaffle1@hotmail.co.uk)

*For more information please visit:  
[www.marnhullstone.co.uk](http://www.marnhullstone.co.uk)*



SUPPLIERS OF NATURAL AND CUT STONE:

*RANDOM DRESSED  
SAWN SPLIT  
CHISEL FACED ASHLAR  
WINDOW SURROUNDS  
DECORATIVE WALLS*



FIREPLACES

ASHLAR

FLOORING

Dean Harris (Quarry Manager): 07771 684647  
Office: 01258 472419  
Whiteway Quarry, Whiteway Lane, Marnhull,  
Dorset, DT10 1NQ



## BADMINTON FOR BEGINNERS

Monday club social night: 8–10pm (except bank holidays)  
 £25 Joining Fee  
 Adults £4.50  
 Family £7.00 (up to 2 adults & 2 children)  
 Juniors £3.00

ALL COACHING FREE (Badminton England Coach)  
 Loads of fun for children and families

## BADMINTON CLUB NIGHT

Tuesday club night: 7.00–10.00pm  
 First night free to new members

ALL COACHING FREE (Badminton England Coach)  
 Intermediate level players always welcome

## BADMINTON SENIOR NIGHT

Thursday senior league night: 8.15–10.15pm  
 The club is interested in players who wish to play at a league level.

The club participates in the salisbury district league – div2 mens and div3 mixed and div3 mixed

## FRENCH & SPANISH CONVERSATION

Tuesdays @ 14.00 and 15.30 at The Hub

Want to get those little grey cells working? Then come along to French or

Spanish conversation! This can complement your work with Duolingo or refresh your memories of your O level days. For more information contact Ros Eveleigh on 821049.

## PILATES CLASS

Mondays at 9.30am for an hour in Marnhull Village Hall  
 Email: shirley.rutter@outlook.com  
 Tel: 07733 085 077

## MARNHULL TENNIS CLUB

We are a very friendly club welcoming players of all standards and have two lovely tennis courts beside the village hall. We have two teams who play in the local league, we run club championships and club sessions, as well playing lots of informal friendly games at various levels. Our fees are very reasonable: £10.00 for children/students, £30.00 for concessions, £35.00 for adults and £80.00 for family membership

We are also running two free evening sessions on the 4th and 11th of April for adults; for those who have never played, those who haven't played for a while and those who play regularly.

Further information and membership forms can be found on our website: [www.marnhullmessenger.org.uk](http://www.marnhullmessenger.org.uk) and follow the links, or by contacting Helen Butler on 821767 or Chris Gregory on 474646

## MARNHULL CRAFT CLUB

Meets at 10:00am on the first Thursday of every month (except August) in

The Methodist Church Hall

Relax, meet new and old friends for coffee and chat. Use your skills and learn something new, in a friendly and relaxed atmosphere.

The first meeting this year will be Thursday 6th February

More information from Mary Palmer, 01258 820232

## MARNHULL BRIDGE CLUB

Marnhull Bridge Club meets in the Methodist Hall every Tuesday at 2 pm to play Chicago.  
 New Players always welcome.

## New Messenger Deadline: 14th February

E-mail all texts, announcements and other requests to: [editor@marnhullmessenger.org.uk](mailto:editor@marnhullmessenger.org.uk)

## CROSSWORD AND SUDOKU ANSWERS

2	7	8	1	9	4	3	6	5	2	9	8	3	6	4	5	1	2	7
4	3	9	8	5	6	7	1	2	3	7	4	5	2	1	9	8	3	6
1	5	6	3	2	7	4	8	9	8	6	1	2	7	8	3	9	5	4
8	4	5	3	1	2	6	7	9	2	8	9	4	5	6	1	2	7	3
6	7	2	5	4	9	3	8	1	2	5	1	7	4	2	5	9	8	2
3	8	1	7	4	6	3	8	9	2	3	6	1	4	7	2	5	9	8
9	6	1	2	7	5	4	3	8	2	8	9	4	5	6	1	2	7	3
4	5	3	8	9	6	2	1	7	2	3	9	6	7	2	8	1	4	5
7	4	5	3	8	9	6	2	1	4	2	8	4	9	5	1	7	6	3
8	3	6	4	5	1	2	7	9	3	3	9	6	7	2	8	1	4	5

**ACROSS** 1. Aldrin 4. Somme 6. Bar 7. Assyrian 8. Zest 11. Inuit 13. Duma 15. Flotsam 16. Col-lage 17. Eton 19. Ad hoc 21. Aran 24. Bordeaux 25. Era 26. Rayon 27. Astral

**DOWN** 1. Arras 2. Rusticated 3. Noyau 4. Swift 5. Manchou 6. Buzz 9. Eliat 10. Titan 12. Inn of Court 13. Delta 14. Magma 18. Old boy 19. Apron 20. Hyena 22. Ravel 23. Napa





**CALCOTT  
CONSTRUCTION  
LIMITED**

*From Design to Reality*



Products range from **conservatories, extensions, loft conversions, alterations, new properties, natural stone** etc. Based in Sturminster Newton, between Shaftesbury and Blandford, we cover Dorset, Wiltshire, Somerset, Hampshire and beyond.

Calcott Construction is a building contractor who has been established since 1984 and handles all types of home improvements from conservatories to new dwellings. We provide a personal hands on service on all projects large and small. We always have a regular team of friendly and experienced tradespeople to complete all projects to the highest standard.

We are able to assist you in the design process right through to the reality of a completed project with the aid of an architect.

**Conservatories Extensions Loft Conversions Alterations New Properties Natural Stone Dry Stone Walling**

**T: 01258 475 046**  
**www.calcottconstruction.co.uk**



**Nazareth Lodge**

Life can take you to unexpected places, we'll make this your home.

**Nazareth Lodge is a privately-owned business where you will find everything one would expect and wish for in a residential care home.**

The decision to move into residential care can be fraught with anxiety. Some may have the luxury of a carefully planned transition, whilst others find themselves with a sudden change of circumstances. They will want to consider the financial implications and the possible impact on their independence.

Life is a continual process of adjustment and we can provide support at this time. We will answer questions with honesty and patience and acknowledge that any decision must be right for them. People are supported to visit our lovely home for an informal meeting and any family, friends or professional advisers will be offered refreshments and made to feel welcome.

**Rated 'OUTSTANDING' by the Care Quality Commission in our last two inspections.**

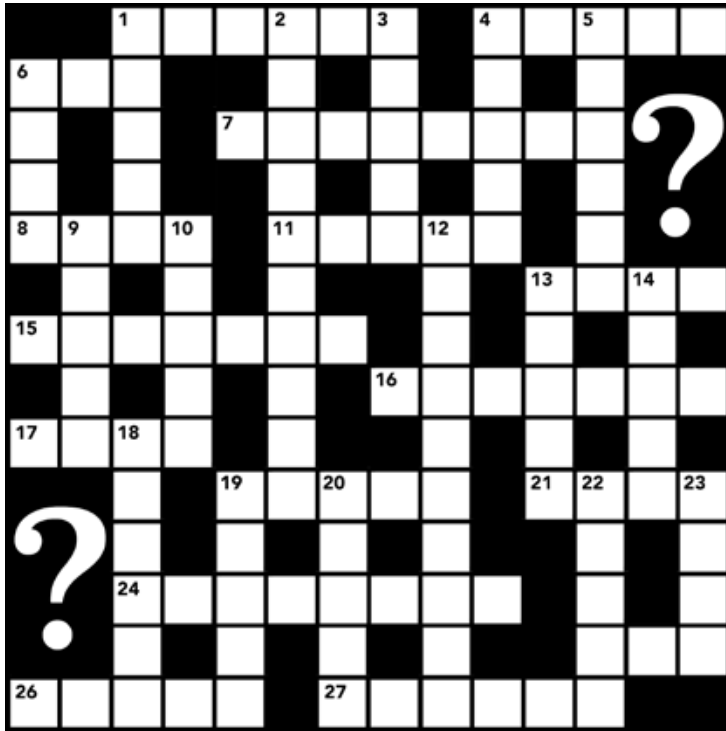
**For further information:**

Tel: 01258 472511

email: [care@nazareth-lodge.co.uk](mailto:care@nazareth-lodge.co.uk)

[nazareth-lodge.co.uk](http://nazareth-lodge.co.uk)





## ACROSS

- 1) See 6D).
- 4) First battle of WW1 between the British and French and German forces. (5)
- 6) Unit of pressure. (3)
- 7) Member of an ancient empire whose civilisation was centred in Assur now in northern Iraq. . (8)
- 8) Outer coloured part of a citrus fruit used as flavouring. (4)
- 11) Member of an indigenous people of Northern Canada. (5)
- 13) Ruling assembly of Russia. (4)
- 15) Wreckage found floating on the sea. (7)
- 16) Form of art made up of various materials arranged and stuck to a backing. (7)
- 17) College founded by Henry IV in 1441. (4)
- 19) Latin phrase meaning literally to this. (2-3)
- 21) Knitwear associated with a group of islands off the west coast of Ireland. (4)
- 24) Wine named after a district of SW France. (8)
- 25) Long distinct period of history. (3)
- 26) Fabric made from regenerated cellulose. (5)
- 27) Relating to stars. (6)

## DOWN

- 1) Type of tapestry named after a French town. (5)
- 2) To be suspended from Oxford or Cambridge universities. (10) 3)
- Liqueur made of brandy flavoured fruit kernels. (5)
- 4) Author of Gulliver''s Travels (5)
- 5) The last imperial dynasty of China also called the Qing dynasty . (6)
- 6) and 1A) The 2nd man to walk on the moon. (4-6)
- 9) Israeli port and resort on the Red Sea. (5)
- 10) One of a family of giant gods in Greek Myths. (5)
- 12) Each of the four legal societies having the right of admitting people to the English bar. (3-2-5)
- 13) Triangular tract of sediment at the mouth of a river. (5)
- 14) Hot semi fluid material within the earth''s crust from which lava is formed. (5)
- 18) Former male pupil of a school. (3-3)
- 19) Area on an airfield where aircraft are parked. (5)
- 20) African doglike carnivore. (5)
- 22) Composer of the orchestral piece Bolero. (5)
- 23) Californian valley famous for computers and wine. (4)

		8			
	3		5		
		3	7		
	1			5	8
5	7	9	8	6	
	9				
1	7				4
4		1	8		6
			5	2	

6	7		4		3	8
8				2	6	
5		4			8	
			2			
	4			1		
			3		9	
	5		9	6		1
	1		5			8

## MINDFUL

### Supporting local people with memory problems

You can find us at the Mindful Café at The Hub, off Station Road, Stalbridge.

The café runs on the first Monday of each month, between 10.00 am and 12 noon.



## ALL WELCOME

If you would like to help and support Mindful, or for more information, contact:

Chair & Membership Secretary, Sally Nutbeem 01747 852153  
(email snutbeem@gmail.com)

**ALL PUZZLE ANSWERS ON  
PAGE 32**



**Services for Individuals**

- ◆ Residential Property
- ◆ Wills, Probate & Tax
- ◆ Employment Law
- ◆ Equity Release Mortgages
- ◆ Powers of Attorney
- ◆ Motoring Offences
- ◆ Dispute Resolution

**Services for Business**

- ◆ Commercial Property
- ◆ Company Law
- ◆ Agricultural Matters
- ◆ Employment Issues
- ◆ Debt Recovery
- ◆ Commercial Disputes
- ◆ Business Advisory Service



**MacLachlan**  
SOLICITORS

Shaftesbury: 01747 440448

Sherborne: 01935 817736

Gillingham: 01747 822103

[www.maclachlansolicitors.co.uk](http://www.maclachlansolicitors.co.uk)



Friars Moor Veterinary Clinic is a professional, dedicated and friendly team providing excellent care in the best interests of you and your pets.

**24 Hour Emergency Care  
Consultations by appointment**

Sturminster: **01258 472314**

Shaftesbury: **01747 850500**

Blandford: **01258 472160**



[www.friarsmoorvets.co.uk](http://www.friarsmoorvets.co.uk)

**THE UDDER FARM SHOP**



*An award winning family-run farm shop offering tasty local food on the edge of the Blackmore Vale*

- 🌿 Butchery, Fish & Deli
- 🌿 Essentials & Gifts
- 🌿 COOK Frozen Meals
- 🌿 Licensed Coffee Shop
- 🌿 Open 7 Days
- 🌿 Easy to find on A30
- 🌿 Free Parking & WiFi
- 🌿 Loyalty Cards Available



**HAND CAR WASH  
NOW OPEN**

The Udder Farm Shop is proud to be the new home of the Shaftesbury Car Wash



[www.theudderfarmshop.co.uk](http://www.theudderfarmshop.co.uk)

Call us: 01747 838 899 Email: [info@theudderfarmshop.co.uk](mailto:info@theudderfarmshop.co.uk)  
Pop In: Manor Farm, East Stour, Gillingham, Dorset SP8 5LQ



**new**  
for  
**2020**



**new**  
for  
**2020**



**KITCHENS • BEDROOMS • BATHROOMS • STUDIES • BARS**

**01258 600 600**  
Marnhull, Dorset

[www.harts.kitchen](http://www.harts.kitchen)