



Superior printing performance – without the hassle

The high performance workgroup printer



Samsung Monochrome Laser Printer
ML-4510/5010/5015 Series

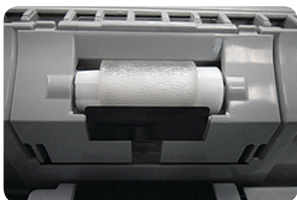


Hassle-free business printing

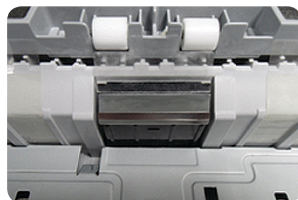
Packed with performance and functionality, yet still small and quiet enough to fit into any workgroup, the Samsung ML-4510 /5010/5015 series has been designed to ensure that your valuable time isn't wasted dealing with 'printer issues'.

Reliable Paper Handling

The high monthly duty cycle of up to 200,000 sheets ensures that the Samsung ML-4510/5010/5015 series copes easily with the pressures of a busy workgroup or office. While the unique Anti-Jam Technology, which by using a new friction roller system, significantly reduces the occurrence of multiple sheet pickups, misfeeds and paper jams – keeping your workgroups working, rather than dealing with paper-handling issues.



Samsung new friction roller



Conventional friction pad



Ease of Use

Designed with all types of users in mind, the Samsung ML-4510/5010/5015 series delivers user-friendly functionality that enhances productivity and maximises value. The simple to use 4.3" touch screen¹ or 4-line LCD control panel and numeric keypad² offer access to a wide array of features and settings, regardless of technical ability, and one touch of the ECO Print Button saves paper and reduces toner consumption by up to 30%.

For busy workgroups, low noise levels keep the distraction to a minimum, while a USB port on the front panel³ of the printer enables users to quickly print compatible files⁴ directly from a USB memory device – without the need to connect to a PC.

1: ML-5015ND only
 2: ML-4510ND and ML-5010ND models only
 3: ML-5010ND and ML-5015ND models only
 4: Includes PRN (with suitable driver support), BMP, TIFF, JPEG and PDF file types



ML-4510ND/5010ND

ML-5015ND



Economy as standard

Designed with economic printing in mind, the Samsung ML-4510/5010/5015 series delivers the savings your budget needs with a range of innovative features and consumables.

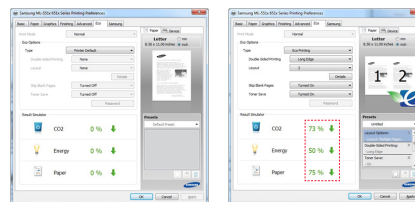


Planet-friendly Printing



With just one touch of the convenient one-touch ECO setting, users can select options such as automatic duplex or 2-up printing, where two pages are printed per sheet of paper. Enabling them to save paper and reduce their toner consumption by up to 30%.

The unique Samsung Result Simulator expands this further by providing a graphic representation of how much you can save on your CO2 emissions, power consumption and paper usage, depending on the options you select.



ECO mode off

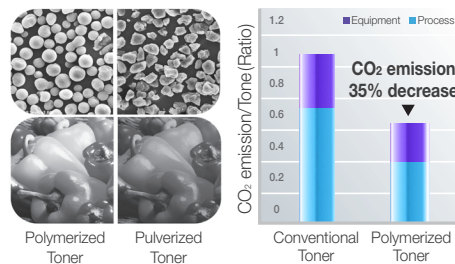
ECO mode on
Duplex, 2-up Printing

- Carbon Footprint : Reduce **73%**
- Power Consumption : Reduce **50%**
- Paper Used : Reduce **75%**

Pocket-friendly Technology

Samsung's Polymerized Toner produces sharper images and lines, thanks to smaller, more uniform toner particles compared to traditional toner. The improved print resolution and glossier finish enables you to easily produce professional looking documents. The unique format of the toner enables the printer to transfer the print onto the paper in a thinner, more uniform layer. This reduces waste and requires a lower fusing temperature than standard, reducing the cost per page and overall power consumption.

By separating the toner and drum cartridge, Samsung has enabled users to reduce TCO even further by replacing the drum unit only when required, rather than with every new toner cartridge. Add to this the extra-high capacity toner cartridge, and you have a truly economical office printing solution.



Polymerized Toner

Pulverized Toner

Conventional Toner

Polymerized Toner





Performance at its best

Utilising the latest technology, the Samsung ML-4510/5010/5015 series delivers the high-quality, productivity boosting print performance your workgroups demand.



Powerful Performance

A 600 MHz dual-core processor with Samsung's state-of-the-art System-On-Chip Technology delivers powerful performance levels, while 1 Gbit LAN support and memory expandable up to 768 MB⁵ enables large documents to be received and processed quickly from multiple users. This, alongside fast print speeds of up to 48 ppm⁶ (A4) and a First Print Out Time of less than 7 seconds means that, no matter what they are trying to print, users won't have to wait for their documents.

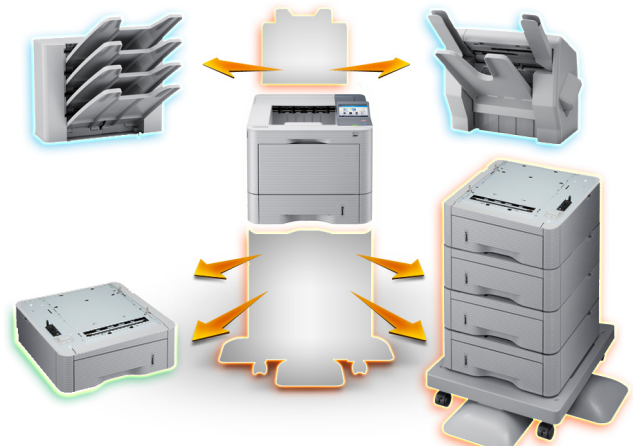
	Samsung ML-4510/5010/5015	Competitor A	Competitor B
FPOT (Ready)	7 sec	8.5 sec	7.5 sec
CPU	600 MHz Dual Core	540 MHz	600 MHz
N/W	1 Gbit	1 Gbit	10/100 Mbit (1 Gbit Optional)
Test Result	86 sec	225 sec	176 sec

* Test Result from Samsung QA Team



Impressive Capabilities

The Samsung ML-4510/5010/5015 series offers a wide range of paper handling capabilities, including duplex as standard, higher than average paper capacity (up to 2,700 sheets at 80g/m²)⁷, heavier media compatibility and full range of finishing options. Both the main tray and multi-purpose tray can manage envelopes, card stock and other special media, so users can achieve the high quality documents they need, regardless of the type of media they use. For users with more specialised needs there is a full range of paper handling options available including additional paper cassette feeders, stapler finisher, and mailbox.



5: ML-5010ND and ML-5015ND models only. ML-4510ND: max 640 MB
 6: ML-4510ND: 43 ppm (A4), ML-5010ND: 48 ppm (A4), ML-5015ND: 48 ppm (A4)
 7: ML-5010ND and ML-5015ND models only. ML-4510ND: max 1140 sheets



Effective Solutions

Managing an effective print environment requires much more than high-quality network print devices, today's business demands productive solutions that answer specific needs within their business.

Samsung's extensive range of print and document management solutions do exactly that – combining quick, high quality print with seamless network integration and compliance, all supported by the very latest device, workflow and security functionality.



Device Management



- A **Secure Pull-Printing** function is provided at no additional cost. For enabled users, documents are only released for printing when they enter their pin code at the device. This removes the issue of sensitive or confidential information being left on the printer.



- **Samsung SyncThru Web Service** uses a familiar web interface to remotely manage your printer devices – enabling you to check status information, customise settings and receive email alerts all from the comfort of your desk.



- Samsung's **Barcode printing** printing solution integrates seamlessly into enterprise applications. Embedded barcode fonts within the device improve the efficiency of automatic data collection processes and lower associated costs.



- **Easy Print Manager** enables you to locate and manage all your Samsung device and print settings from one simple location right down to ordering supplies.



- Samsung's managed print service **CounThru™** enables you to remotely monitor activity, and calculate and manage the costs of your entire printer fleet



- The Samsung **Universal Print Driver** facilitates quick and easy printer sharing, by enabling you to print to any Samsung device without having to install a driver for every networked printer. You can dynamically search for compatible devices on the network and check their status; enabling users to only use available printers and dramatically reduce calls to the IT helpdesk.



- **Samsung SyncThru™ Web Admin** manages networked, single and multifunction print devices. SyncThru™ Web Admin provides increased efficiency and productivity by allowing IT administrators, support staff and users to manage, monitor and diagnose multiple printing devices remotely via a familiar Web interface.

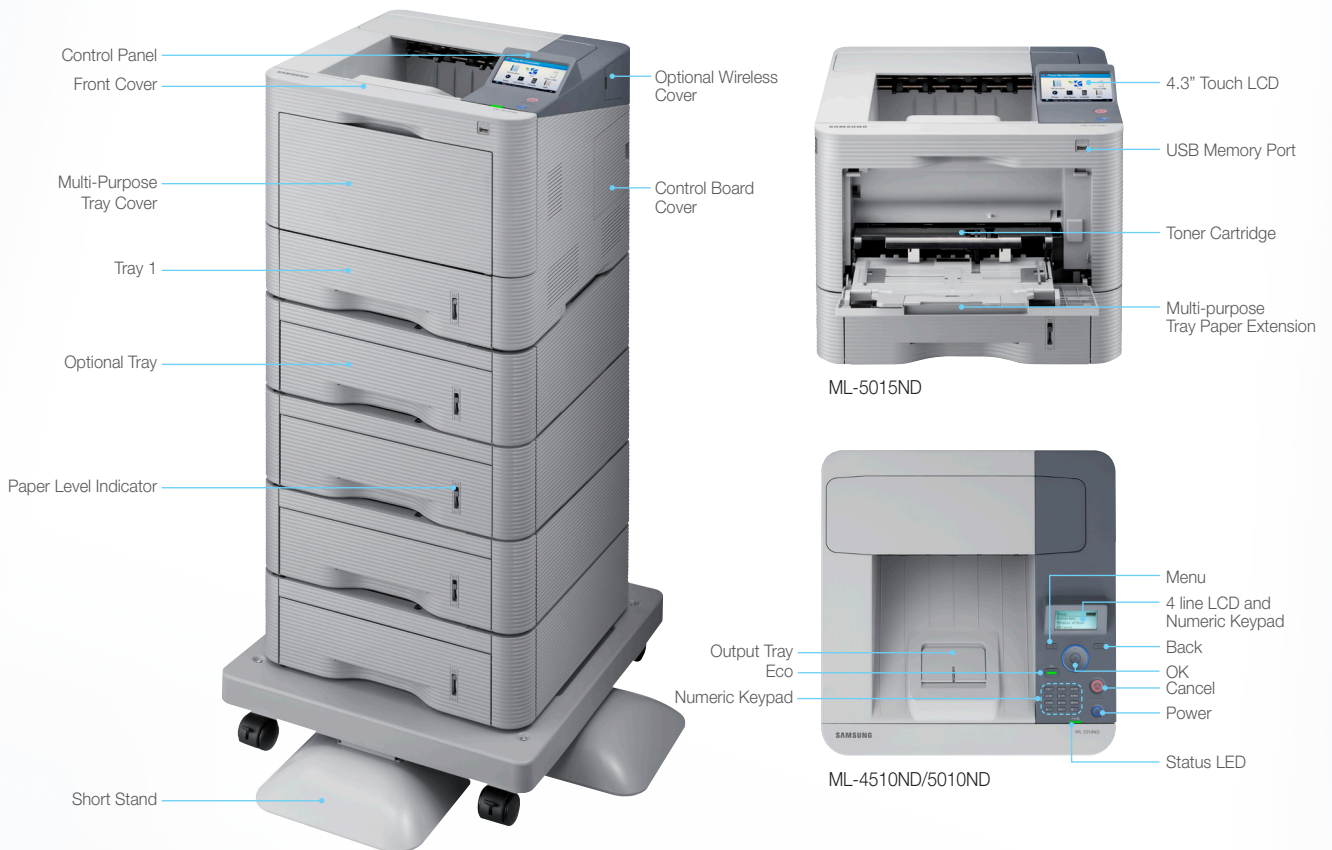


- **Samsung AnyWeb Print** is a handy tool that enables you to collect and only print the information you need from the web – reducing not only waste, but also time and energy too.



It's a serious business, running a business. So you need to know that everything is under control and running smoothly, and that the investments you make add real value. Today, a business printer is much more than just a printer; it's a high performance, productivity boosting business tool, and you need a printer you can rely on. Offering outstanding productivity and versatility, the Samsung Mono Laser Printer ML-4510/5010/5015 series effortlessly combines performance with simplicity to create the ideal workgroup printer.

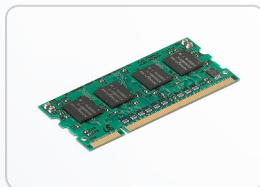
Configuration



Option & Supplies



Parallel Connector
ML-PAR100



512MB Memory
ML-MEM170



Optional Paper Tray
ML-S5010A



HDD
ML-HDK470
(ML-5010ND/5015ND only)



Finisher
ML-OCT65
(ML-5010ND/5015ND only)



4 bin Mailbox
ML-MBT65
(ML-5010ND/5015ND only)



Short Stand
ML-DSK65S
(ML-5010ND/5015ND only)



Imaging Unit
MLT-R307



Black Toner Cartridge
Initial Toner
MLT-D307S



Black Toner Cartridge
High Yield Toner
MLT-D307L/E



Specifications

	ML-4510ND	ML-5010ND	ML-5015ND
Print			
Speed (Monochrome)	Up to 43 ppm in A4 (45 ppm in Letter)	Up to 48 ppm in A4 (50 ppm in Letter)	
Resolution	Optical: 600 x 600 / Enhanced: Up to 1200 x 1200 dpi effective output		
First Print Out Time (Monochrome)	As fast as 7 sec		
Emulation	PCL5e, PCL6, IBM ProPrinter, EPSON, PostScript3, PDF Direct V1.7, XPS v1.0		
Duplex	Option: Up to 28 ipm in A4 (29 ipm in Letter)	Up to 31 ipm in A4 (33 ipm in Letter)	
Paper Handling			
Standard Capacity	520-sheet Cassette Tray, 100-sheet Multi Purpose Tray @80g/m ² (550-sheet Cassette Tray, 100-sheet Multi Purpose Tray @75g/m ²)		
Max. Capacity	1,140 sheets @80g/m ² (1,200 sheets @75g/m ²)	2,700 sheets @80g/m ² (2,850 sheets @75g/m ²)	
Media Size	76 x 127 mm (3" x 5") ~ 216 x 356 mm (8.5" x 14") A4, Letter, Legal, Oficio, Folio, JIS B5, ISO B5, Executive, A5, Statement, A6, Index Card Stock, Postcard, Envelope Monarch, Envelope No-10, Envelope DL, Envelope C5, Envelope C6, Envelope No 9, Custom [76 x 127 mm (3.0" x 5.0") ~ 216 x 356 mm (8.5" x 14")]		
Media Type	Plain Paper, Thin Paper, Thick Paper, Cardstock, Thicker Paper, Hole Punched, Transparency, Pre-Printed, Letterhead, Recycled, Archive, Bond, Label, Envelope, Cotton, Colored		
General			
Processor	Samsung Dual Core 600 MHz		
Memory/Storage	128 MB (Max. 640 MB)	256 MB (Max. 768 MB)	
OS Compatibility	WINDOW 2000/XP (32/64 bit)/2003 Server (32/64 bit)/Vista (32/64 bit)/2008 Server (32/64 bit)/7/2008 Server R2 [Linux] - RedHat Enterprise Linux WS 4, 5 (32/64 bit) - Fedora 5, 6, 7, 8, 9, 10, 11, 12, 13 (32/64 bit) - SuSE Linux 10.1 (32 bit) - OpenSuSE 10.2, 10.3, 11.0, 11.1, 11.2 (32/64 bit) - Mandriva 2007, 2008, 2009, 2009.1, 2010 (32/64 bit) - Ubuntu 6.06, 6.10, 7.04, 7.10, 8.04, 8.10, 9.04, 9.10, 10.04 (32/64 bit) - SuSE Linux Enterprise Desktop 10, 11 (32/64 bit) - Debian 4.0, 5.0 (32/64 bit) - Mac OS X 10.3-10.6, [UNIX] Sun Solaris 9, 10 (x86, SPARC), HP-UX 11.0, 11i v1, 11i v2, 11i v3 (PA-RISC, Itanium), IBM AIX 5.1, 5.2, 5.3, 5.4		
Interface	IEEE 1284b Parallel Option Connector, High Speed USB 2.0, Device 1 Port/Host 1 Port (Rear 1 Port-ML4510ND), Device 1 Port/Host 2 Port (Rear 1 Port / Front 1 Port-ML5010ND/5015ND) 10/100/1000 Base TX		
LCD	16 x 4 Character LCD	4.3" Color Touch LCD	
LED	4 (Power Key, ECO, Cycle, Status)	2 (Power Key, Status)	
Key	3 x 4 Numeric key, Power, ECO, Menu, OK, Cancel, Back	Power, Cancel	
Noise Level	Less than 54 dBA (Sound Pressure) (Printing), Less than 30.0 dBA (Sound Pressure) (Standby), Back Ground Level (Sleep)		
Duty Cycle, Monthly	200,000 sheets		
Dimension (WxDxH)	418 x 435 x 358 mm (16.46 x 17.13 x 14.09")		
Weight	Set - 22.96 kg (50.62 lbs), Imaging Unit - 1.67 kg (3.68 lbs), Toner - 0.69 kg (1.52 lbs), Gross - 26.45 kg (58.31 lbs)		
Power Consumption	Less than 12 W (Ready)/ Less than 850 W (AVG)/1400 W (Max/Peak)/ Less than 4.5 W (Power Save)	Less than 15 W (Ready)/Less than 900 W (AVG)/ 1400 W (Max/Peak)/ Less than 4.5 W (Power Save)	
Consumables			
Model Code (Toner Cartridge)	Standard: MLT-D307S High Yield: MLT-D307L	Standard: MLT-D307S High Yield: MLT-D307L Extra High Yield: MLT-D307E	
Yield (Toner Cartridge)	Standard: Average cartridge yield 7K standard pages* High yield: Average cartridge yield 15K standard pages* *Declared cartridge yield in accordance with ISO/IEC 19752.	Standard: Average cartridge yield 7K standard pages* High yield: Average cartridge yield 15K standard pages* Extra High yield: Cartridge yield 20K standard pages* *Declared cartridge yield in accordance with ISO/IEC 19752.	
Model Code (Imaging Unit)	MLT-R307		
Yield (Imaging Unit)	Average 60K pages* *Average cartridge yield. This may vary depending on average area coverage & print job size.		
Options	Memory: 512 MB Second Cassette: 520 sheet Cassette Tray @80g/m ² (550 sheet Cassette Tray @75g/m ²) IEEE 1284B Parallel connection Duplex Unit: Default	Memory: 512 MB Second Cassette: 520 sheet Cassette Tray @80g/m ² (550 sheet Cassette Tray @75g/m ²) Third/Fourth/Fifth Cassette: 520 sheet Cassette Tray @80g/m ² (550 sheet Cassette Tray @75g/m ²) Finisher (Stapler): 500 sheets (5,000 staples) @80g/m ² Multi-bin Mailbox: 400 sheets (100 sheets x 4 bin) @80g/m ² Hard Disk : Optional IEEE 1284B Parallel connection Duplex Unit: Default	



Distributed by

Printing solutions
as easy as

