



HP Spectre x360 - 13-w013tu (Z4K15PA)

Active as of 10/12/2016



### Overview

#### Seductive power. Take it for a spin.

We designed the all-new Spectre x360 to be the object of your desire. Its four versatile modes were made for those who crave uninhibited freedom. With alluring power in our thinnest convertible frame, we've crafted a device that does it all. Why resist?

We designed the all-new Spectre x360 to be the object of your desire. Its four versatile modes and alluring power give you the freedom to do it all, with our thinnest convertible frame. Why resist?



#### Seductively slim

Our thinnest x360 yet is irresistibly sleek and impressively versatile. The superb thinness of the micro-edge display lets you truly experience the immersive freedom of the four unique modes.



#### Enticing audio

With quad HP Speakers, HP Audio Boost, and custom tuning by the experts at Bang & Olufsen, entertainment comes to life with sound you can feel. Awaken your senses with PC audio perfection.



#### Captivating power

Prepare to accomplish more than you ever thought possible with up to 15 hours and 15 minutes of battery life<sup>1</sup> and HP Fast Charge<sup>2</sup>. Get unrivaled all-day performance with a lightning-fast Intel® Core™ processor.



#### Windows 10

Do great things confidently with the familiar feel of Windows—only better.



#### 7th generation Intel® Core™ processors

Powerful performance easily keeps up with all your multitasking demands, enables new ways to interact with your PC, and delivers enhanced 4K video capabilities.



#### IPS panel

No matter where you stand, this screen delivers clear, vivid images with 178° wide viewing angles, so everyone can get a great view.



#### USB-C™ Thunderbolt™

Power your device, connect an external display, or transfer data at a blazing 40 GB all from one impressive USB-C™ Thunderbolt™ port. And it's reversible, so you never have to worry about plugging in upside down.<sup>18</sup>



#### Sleek design

Easily take this thin and light PC from room to room or on the road. When your PC goes wherever you go, staying productive and entertained has never been easier.





### HP Audio Boost

Take your audio experience to the next level with smart amplification technology giving you loud, clear, and dynamic sound.



### HP Wide Vision FHD IR Camera

Log in safely through Windows Hello with the infrared sensor. With an 88-degree, wide-angle field of view, you can video chat with your entire family or group of friends in stunning detail.<sup>19</sup>

### USB 3.0 connector

With the world's most popular USB connection, you can easily connect any of your existing USB devices and experience data transfer speeds ten times faster than USB 2.0.



With two microphones and advanced noise reduction software, you'll always sound crystal-clear when you video chat or record.<sup>19</sup>

---

## Specifications

### Operating system

Windows 10 Home 64

### Processor family

7th Generation Intel® Core™ i7 processor

### Processor

Intel® Core™ i7-7500U (2.7 GHz, up to 3.5 GHz, 4 MB cache, 2 cores)

### MDA key selling point

Windows 10 Home 64

### Security management

Trusted Platform Module (TPM) support

### Memory, standard

8 GB LPDDR3-1866 SDRAM (onboard)

### Hard drive description

512 GB PCIe® NVMe™ M.2 SSD

### Graphics

Integrated

### Graphics

Intel® HD Graphics 620

### Ports

1 headphone/microphone combo; 1 USB 3.1 Gen 1 (HP Sleep and Charge); 2 USB 3.1 Type-C™ Gen 2 (HP Sleep and Charge, Thunderbolt Gen 3)

### Webcam

HP TrueVision FHD IR Camera with dual array digital microphone

### Audio features

Bang & Olufsen; HP Audio Boost; Quad speakers

### Pointing device

HP Imagepad with multi-touch gesture support

### Keyboard

Full-size island-style backlit keyboard

### Sensors

Accelerometer; Gyroscope; eCompass

### Wireless

Intel® 802.11ac (2x2) Wi-Fi® and Bluetooth® 4.2 Combo (Miracast compatible)

### Power supply type

65 W AC power adapter

### Battery type

3-cell, 57.8 Wh Li-ion

### Energy efficiency

ENERGY STAR® certified; EPEAT® Silver registered

**Product color**

Natural silver, aluminum cover

**Minimum dimensions (W x D x H)**

30.5 x 21.8 x 1.38 cm

*(Dimensions vary by configuration)*

**Weight**

1.29 kg

**What's in the box**

Sleeve

USB Type-C™ to RJ-45 Gigabit dongle

**Software included**

McAfee LiveSafe™<sup>1</sup>  
<sup>2</sup>

**Pre-installed software**

Adobe® Shockwave® Player; User Guide documentation

**Warranty**

1-year limited parts and labour

---

**Overview**

- 1 Windows 10/MM14 Battery life will vary depending on various factors including product model, configuration, loaded applications, features, use, wireless functionality, and power management settings. The maximum capacity of the battery will naturally decrease with time and usage. See <https://bapco.com/products/mobilemark-2014/>
- 2 Recharges your battery up to 90% within 90 minutes when the system is off (using “shut down” command). Recommended for use with the HP adapter provided with the notebook, not recommended with a smaller capacity battery charger. After charging has reached 90% capacity, charging speed will return to normal speed. Available on select HP Spectre, HP Envy, HP Omen and HP Pavilion PC models. See <http://store.hp.com> for a full list of product features.

**Specifications**

- 1 McAfee LiveSafe 12-month free trial offer (Internet access required. First 12 months included. Subscription required for live updates afterwards.)
- 2 McAfee LiveSafe™: Software varies by country.

**Images - Product (9)**



**Center facing**

- 54 x 41 (jpg) 54 x 41 (png)
- 100 x 70 (jpg) 96 x 72 (jpg)
- 96 x 72 (png) 99 x 74 (png)
- 153 x 115 180 x 135 (png) (png)
- 240 x 180 240 x 180 (jpg) (png)
- 247 x 185 170 x 190 (png) (jpg)
- 257 x 193 320 x 240 (png) (jpg)
- 320 x 240 474 x 356 (png) (png)
- 513 x 385 400 x 400 (png) (jpg)
- 400 x 400 573 x 430 (png) (png)
- 800 x 600 1659 x 1246 (png) (png)
- 2850 x 2033 2858 x 2109 (png) (jpg)



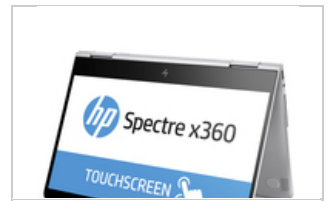
**Left facing**

- 54 x 41 (jpg) 54 x 41 (png)
- 100 x 70 (jpg) 96 x 72 (jpg)
- 96 x 72 (png) 99 x 74 (png)
- 153 x 115 180 x 135 (png) (png)
- 240 x 180 240 x 180 (jpg) (png)
- 247 x 185 170 x 190 (png) (jpg)
- 257 x 193 320 x 240 (png) (jpg)
- 320 x 240 474 x 356 (png) (png)
- 513 x 385 400 x 400 (png) (jpg)
- 400 x 400 573 x 430 (png) (png)
- 800 x 600 1659 x 1246 (png) (png)
- 3060 x 1953 3061 x 2021 (png) (jpg)



**Right facing**

- 54 x 41 (jpg) 54 x 41 (png)
- 100 x 70 (jpg) 96 x 72 (jpg)
- 96 x 72 (png) 99 x 74 (png)
- 153 x 115 180 x 135 (png) (png)
- 240 x 180 240 x 180 (jpg) (png)
- 247 x 185 170 x 190 (png) (jpg)
- 257 x 193 320 x 240 (png) (jpg)
- 320 x 240 474 x 356 (png) (png)
- 513 x 385 400 x 400 (png) (jpg)
- 400 x 400 573 x 430 (png) (png)
- 800 x 600 1659 x 1246 (png) (png)
- 3062 x 1953 3062 x 2021 (png) (jpg)



**Left facing screen o**

- 54 x 41 (jpg) 54 x 41 (png)
- 100 x 70 (jpg) 96 x 72 (jpg)
- 96 x 72 (png) 99 x 74 (png)
- 153 x 115 180 x 135 (png) (png)
- 240 x 180 240 x 180 (jpg) (png)
- 247 x 185 170 x 190 (png) (jpg)
- 257 x 193 320 x 240 (png) (jpg)
- 320 x 240 474 x 356 (png) (png)
- 513 x 385 400 x 400 (png) (jpg)
- 400 x 400 573 x 430 (png) (png)
- 800 x 600 1659 x 1246 (png) (png)
- 2695 x 2072 2821 x 2198 (png) (jpg)



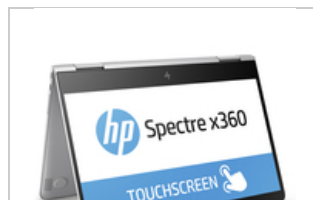
**Left rear facing**

- 54 x 41 (jpg) 54 x 41 (png)
- 100 x 70 (jpg) 96 x 72 (jpg)
- 96 x 72 (png) 99 x 74 (png)
- 153 x 115 180 x 135 (png) (png)
- 240 x 180 240 x 180 (jpg) (png)
- 247 x 185 170 x 190 (png) (jpg)
- 257 x 193 320 x 240 (png) (jpg)
- 320 x 240 474 x 356 (png) (png)
- 513 x 385 400 x 400 (png) (jpg)



**Rear facing**

- 54 x 41 (jpg) 54 x 41 (png)
- 100 x 70 (jpg) 96 x 72 (jpg)
- 96 x 72 (png) 99 x 74 (png)
- 153 x 115 180 x 135 (png) (png)
- 3025 x 179 240 x 180 (png) (jpg)
- 240 x 180 247 x 185 (png) (png)
- 170 x 190 257 x 193 (jpg) (png)
- 320 x 240 320 x 240 (jpg) (png)
- 3023 x 311 474 x 356 (jpg) (png)



**Right facing screen**

- 54 x 41 (jpg) 54 x 41 (png)
- 100 x 70 (jpg) 96 x 72 (jpg)
- 96 x 72 (png) 99 x 74 (png)
- 153 x 115 180 x 135 (png) (png)
- 240 x 180 240 x 180 (jpg) (png)
- 247 x 185 170 x 190 (png) (jpg)
- 257 x 193 320 x 240 (png) (jpg)
- 320 x 240 474 x 356 (png) (png)
- 513 x 385 400 x 400 (png) (jpg)



**Right profile open**

- 54 x 41 (jpg) 54 x 41 (png)
- 100 x 70 (jpg) 96 x 72 (jpg)
- 96 x 72 (png) 99 x 74 (png)
- 153 x 115 180 x 135 (png) (png)
- 240 x 180 240 x 180 (jpg) (png)
- 247 x 185 170 x 190 (png) (jpg)
- 257 x 193 320 x 240 (png) (jpg)
- 320 x 240 474 x 356 (png) (png)
- 513 x 385 400 x 400 (png) (jpg)

400 x 400 (png)	573 x 430 (png)
800 x 600 (png)	1659 x 1246 (png)
2911 x 1878 (png)	2911 x 1970 (jpg)

513 x 385 (png)	400 x 400 (jpg)
400 x 400 (png)	573 x 430 (png)
800 x 600 (png)	1659 x 1246 (png)

400 x 400 (png)	573 x 430 (png)
800 x 600 (png)	1659 x 1246 (png)
2695 x 2059 (png)	2872 x 2204 (jpg)

400 x 400 (png)	573 x 430 (png)
800 x 600 (png)	1659 x 1246 (png)
3118 x 1275 (png)	3148 x 1353 (jpg)



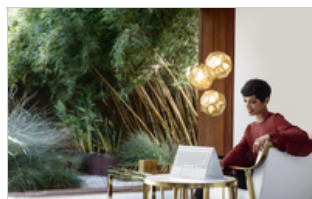
**Right profile reclin**

54 x 41 (jpg)	54 x 41 (png)
100 x 70 (jpg)	96 x 72 (jpg)
96 x 72 (png)	99 x 74 (png)
153 x 115 (png)	180 x 135 (png)
240 x 180 (jpg)	240 x 180 (png)
247 x 185 (png)	170 x 190 (jpg)
257 x 193 (png)	320 x 240 (jpg)
320 x 240 (png)	474 x 356 (png)
513 x 385 (png)	400 x 400 (jpg)
400 x 400 (png)	573 x 430 (png)
800 x 600 (png)	1659 x 1246 (png)
2970 x 1591 (png)	2973 x 1685 (jpg)

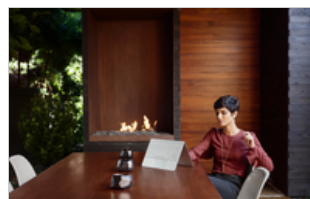
**Images - Product in use (18)**



**HP Spectre x360**



**HP Spectre x360**



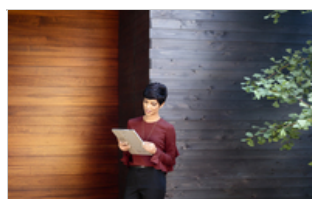
**HP Spectre x360**



**HP Spectre x360**



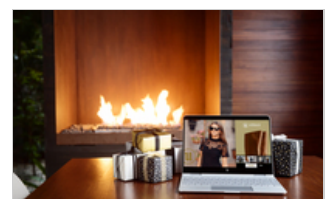
**HP Spectre x360**



**HP Spectre x360**



**HP Spectre x360**



**HP Spectre x360**

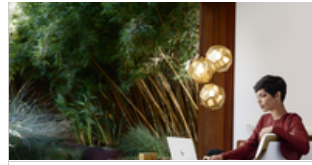




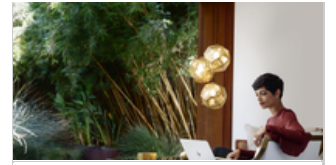
HP Spectre x360



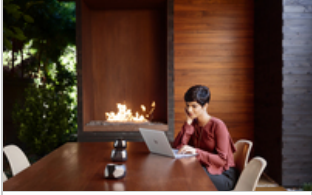
HP Spectre x360



HP Spectre x360



HP Spectre x360



HP Spectre x360



HP Spectre x360



HP Spectre x360



HP Spectre x360



HP Spectre x360



HP Spectre x360

## Audio/Multimedia and Communication Devices

### Headphones

Active	HP H3100 Black Wired Headphone	T3U77AA
Active	HP H3100 White Wired Headphone	T3U78AA

### Headsets

Active	HP 2800 Red Stereo Headset	W1Y21AA
Active	HP 2800 Stereo DF Blue Headset	W1Y20AA
Active	HP H2000 Black Stereo Headset	F9B08AA
Active	HP H2000 White Stereo Headset	F9B09AA
Active	HP H2310 NBlue In Ear Headset	W2Q01AA
Active	HP H2310 Pink In-ear Headset	J8H44AA
Active	HP H2310 Red/Black In-ear Headset	J8H45AA
Active	HP H2310 White In-ear Headset	J8H43AA
Active	HP H5000 Black Bluetooth Headset	J2X01AA
Active	HP H5000 Neon Orange Bluetooth Headset	J2X03AA
Active	HP H5000 Neon Purple Bluetooth Headset	J2X02AA
Active	HP H5000 White Bluetooth Headset	J2X00AA

### Speakers

Active	HP 2.0 Black S5000 Speaker System	K7S75AA
Active	HP 2.0 White S5000 Speaker System	K7S74AA
Active	HP 2.1 Black S7000 Speaker System	K7S77AA
Active	HP 2.1 White S7000 Speaker System	K7S76AA
Active	HP Black S6500 Wireless Speaker	N5G09AA
Active	HP S3100 Black USB Speaker	V3Y47AA
Active	HP S3100 White USB Speaker	V3Y48AA
Active	HP White S6500 Wireless Speaker	N5G10AA

---

## Keyboards/Mice/Monitors and Input Devices

### Keyboard and Mouse Kits

Active	HP C2500 Desktop	J8F15AA
Active	HP C2710 Combo Keyboard	M7P30AA

### Keyboards

Active	HP K1500 Keyboard	J8F16AA
Active	HP K4600 Bluetooth Keyboard	M3K27AA

### Mice

Active	HP X500 Wired Mouse	E5C12AA
Active	HP X900 Wired Mouse	V1S46AA
Active	HP X1200 Sparkling Black Wired Mouse	H6E99AA
Active	HP X3000 Blue Wireless Mouse	K5D27AA

Active	HP X3000 Cobalt Blue Wireless Mouse	N4G63AA
Active	HP X3000 Purple Wireless Mouse	K5D29AA
Active	HP X3000 Red Wireless Mouse	K5D26AA
Active	HP X3000 Silver Wireless Mouse	K5D28AA
Active	HP X3300 (White) Wireless Mouse	H4N94AA
Active	HP X3300 Black Wireless Mouse	K5D30AA
Active	HP X3300 Wireless Mouse	H4N95AA
Active	HP X9000 OMEN Mouse	J6N88AA
Active	HP Z2000 Wired Mouse	E5C11AA
Active	HP Z3200 Silver Wireless Mouse	E5J20AA
Active	HP Z3200 White Wireless Mouse	E5J19AA
Active	HP Z3700 Black Wireless Mouse	V0L79AA
Active	HP Z4000 Red Wireless Mouse	E8H24AA
Active	HP Z5000 Bluetooth Mouse	E5C13AA
Active	HP Z5000 Dark Ash Silver Wireless Mouse	W2Q00AA
Active	Star Wars Special Edition Wireless Mouse	P3E54AA



## HP Care Services

### Hardware Installation Services

Active	HP PC Setup and Installation Service for 1 Consumer Desktop or Notebook	U4814E
--------	-------------------------------------------------------------------------	--------

### Hardware Support Services

Active	HP 1 year 3 day Onsite Notebook Service	UM951E
Active	HP 2 year 3 day Onsite Notebook Service	UM952E
Active	HP 2 year Next Business Day Onsite Notebook Education Only Service	U0VH4E
Active	HP 3 year 3 day Onsite Notebook Service	UM954E
Active	HP 3 year Accidental Damage Protection Plus Next Business Day Onsite Notebook Education Only Service	U0VG8E
Active	HP 3 year Next Business Day Onsite Notebook Education Only Service	U0VH1E
Active	HP 3 year Pickup and Return Notebook Service	UM966E

## Detailed Specifications

### Additional information about HP

<http://www.hp.com>

### Audio features

Bang & Olufsen; HP Audio Boost; Quad speakers

### Battery type

3-cell, 57.8 Wh Li-ion

### Code name

Sphinx 1.0

### Copyright notice

The product could differ from the images shown. © 2014 Hewlett-Packard Development Company, L.P. The Information contained herein is subject to change without notice. Warranties for HP products and services are set out in the express warranty statements accompanying such products and services. In addition, our products and services come with guarantees that cannot be excluded under the Australian Consumer Law. Subject to the foregoing, nothing herein should be construed as constituting an additional warranty. HP shall not be liable for technical or editorial errors or omissions contained herein.

### Dimension note (metric)

Dimensions vary by configuration

### Display

13.3" diagonal FHD UWVA BrightView WLED-backlit touch screen (1920 x 1080)

### Display

13.3" FHD UWVA touch display

### Display size (diagonal)

13.3"

### Energy efficiency

ENERGY STAR® certified; EPEAT® Silver registered

### Feature supporting point footnote number

[3]

### Graphics

Integrated

### Graphics

Intel® HD Graphics 620

### Hard drive description

512 GB PCIe® NVMe™ M.2 SSD

### HP apps

HP ePrint; HP Recovery Manager; HP Support Assistant; HP Audio Switch; HP Sure Connect

### Image legal disclaimer

Product image may differ from actual product

### Keyboard

Full-size island-style backlit keyboard

### Legal disclaimer

Not all features are available in all editions or versions of Windows. Systems may require upgraded and/or separately purchased hardware, drivers and/or software to take full advantage of Windows functionality. See <http://www.microsoft.com>.

### Legal disclaimer [01]

[3] Not all features are available in all editions or versions of Windows. Systems may require upgraded and/or separately purchased hardware, drivers, software or BIOS update to take full advantage of Windows functionality. Windows 10 is automatically updated, which is always enabled. ISP fees may apply and additional requirements may apply over time for updates. See <http://www.microsoft.com>.

### Legal disclaimer [18]

[18] Transfer rate may vary. All performance specifications represent the typical

specifications provided by HP's component manufacturers; actual performance may vary either higher or lower. USB Type-C™ and USB-C™ are trademarks of USB Implementers Forum.

**Legal disclaimer [19]**

[19] Internet access required and not included.

**MDA key selling point**

Windows 10 Home 64

**Memory and storage**

512 GB SSD storage

**Memory, standard**

8 GB LPDDR3-1866 SDRAM (onboard)

**Minimum dimensions (W x D x H)**

30.5 x 21.8 x 1.38 cm

**Operating system**

Windows 10 Home 64

**Pointing device**

HP Imagepad with multi-touch gesture support

**Ports**

1 headphone/microphone combo; 1 USB 3.1 Gen 1 (HP Sleep and Charge); 2 USB 3.1 Type-C™ Gen 2 (HP Sleep and Charge, Thunderbolt Gen 3)

**Power supply type**

65 W AC power adapter

**Pre-installed software**

Adobe® Shockwave® Player; User Guide documentation

**Pre-installed software footnote****number**

[3]

**Processor**

Intel® Core™ i7-7500U (2.7 GHz, up to 3.5 GHz, 4 MB cache, 2 cores)

**Processor family**

7th Generation Intel® Core™ i7 processor

**Product color**

Natural silver, aluminum cover

**Product long name specifications**

HP Spectre x360 - 13-w013tu with Windows 10 Home 64; Intel® Core™ i7-7500U (2.7 GHz, up to 3.5 GHz, 4 MB cache, 2 cores); 8 GB LPDDR3-1866 SDRAM (onboard); 512 GB PCIe® NVMe™ M.2 SSD

**Security management**

Trusted Platform Module (TPM) support

**Sensors**

Accelerometer; Gyroscope; eCompass

**Software - Productivity & finance**

Buy Office

**Software footnote number**

[1,2]

**Software included**

McAfee LiveSafe™

**Special features**

Webcam supports Windows Hello

**Standard memory note**

Transfer rates up to 1866 MT/s

**Tech spec footnote**

[1] McAfee LiveSafe 12-month free trial offer (Internet access required. First 12 months included. Subscription required for live updates afterwards.)

**Tech spec footnote**

[2] McAfee LiveSafe™: Software varies by country.

**Tech spec footnote**

[3] Adobe® Shockwave® Player: Adobe Shockwave is a trademark of Adobe Systems Incorporated.

**Trademark information**

All other trademarks are the property of their respective owners.

**Warranty**

1-year limited parts and labour

**Webcam**

HP TrueVision FHD IR Camera with dual array digital microphone

**Weight**

1.29 kg

**Weight note (metric)**

Weight varies by configuration

**What's in the box**

Sleeve; USB Type-C™ to RJ-45 Gigabit dongle

**Wireless**

Intel® 802.11ac (2x2) Wi-Fi® and Bluetooth® 4.2 Combo (Miracast compatible)

*The product could differ from the images shown. © Copyright 2015 HP Inc. The Information contained herein is subject to change without notice. Warranties for HP products and services are set out in the express warranty statements accompanying such products and services. In addition, our products and services come with guarantees that cannot be excluded under the Australian Consumer Law. Subject to the foregoing, nothing herein should be construed as constituting an additional warranty. HP shall not be liable for technical or editorial errors or omissions contained herein.*