



SAMSUNG

ED-D SERIES COMMERCIAL LED LCD DISPLAYS

MAXIMUM IMPACT NO LONGER REQUIRES MAXIMUM DOLLARS.



DIRECT-LIT LED DISPLAYS THAT ARE SIMPLE, RELIABLE AND AFFORDABLE

Good news. Thanks to the ED-D Series, you can now afford to step up to the performance and cost efficiencies of LED technology. With Samsung's most affordable commercial-grade LED display solution, you can start connecting with audiences in just about any setting, from retail environments and quick service restaurants to school campuses, healthcare facilities and entertainment venues. The series offers a full range of sizes, from 32" all the way up to 75". Pictures are vivid and amazing—it's a Samsung. **The New Business Experience**

Contact Us:

1-800-SAMSUNG
1-866-SAM4BIZ
samsung.com/business
samsung.com/prodisplay

Follow Us:

youtube.com/samsungbizusa
 @SamsungBizUSA

KEY FEATURES



Direct-Lit LED Backlight

Direct-lit LED technology delivers sharp, high-resolution images, along with the uniform brightness typical of traditional CCFL-backlit displays. It also uses less energy, with savings of up to 50% over CCFL. And it does it all with a cost comparable to CCFL.



More Connectivity Options

Having flexible content options is important. That's why the ED-D Series delivers a multitude of connectivity choices. Inputs include VGA, DVI-D, HDMI and Component/Composite.



Commercial Reliability

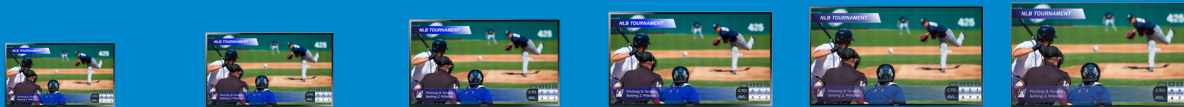
While the ED-D Series displays are affordable, they're also every bit as reliable as Samsung's most expensive display panels. In fact, we're so confident of their quality, we back the ED-D Series displays with a 3-year onsite warranty. You may never need it, but it's good to know Samsung is there for you.



High Resolution

Samsung ED-D Series displays are bright, vivid and sharp. They feature 1920 x 1080 Full HD resolution (1366 x 768 on 32" model), for crisp motion graphics and easily readable text.

Samsung ED-D Series Commercial LED LCD Displays



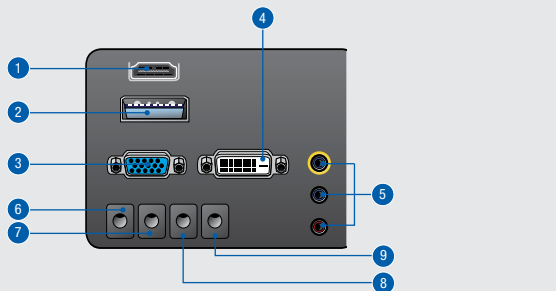
KEY SPECIFICATIONS

For complete product specifications, visit samsung.com/prodisplay

Display	Model Number	ED32D	ED40D	ED46D	ED55D	ED65D	ED75D
Screen Size		32"	40"	46"	55"	65"	75"
Panel Technology		60Hz LED BLU	60Hz LED BLU	60Hz LED BLU	120Hz LED BLU	60Hz LED BLU	120Hz LED BLU
Native Resolution		1366x768 (16:9)	1920x1080 (16:9)	1920x1080 (16:9)	1920x1080 (16:9)	1920x1080 (16:9)	1920x1080 (16:9)
Brightness (Max)		330 nits	350 nits	350 nits	350 nits	400 nits	320 nits
Contrast Ratio (Typical)		4000:1	5000:1	5000:1	5000:1	4,000:1	4,000:1
Viewing Angle		178° / 178°	178° / 178°	178° / 178°	178° / 178°	178° / 178°	178° / 178°
Orientation		Landscape / Portrait	Landscape / Portrait	Landscape / Portrait	Landscape / Portrait	Landscape / Portrait	Landscape / Portrait
Response Time		8ms	8ms	8ms	8ms	6.5ms	4ms
Connectivity	Input	Video:VGA (D-Sub 15 Pin), DVI-D, Component/Composite, HDMI Audio: Stereo Mini Jack	Video:VGA (D-Sub 15 Pin), DVI-D, Component/Composite, HDMI Audio: Stereo Mini Jack	Video:VGA (D-Sub 15 Pin), DVI-D, Component/Composite, HDMI Audio: Stereo Mini Jack	Video:VGA (D-Sub 15 Pin), DVI-D, Component/Composite, HDMI Audio: Stereo Mini Jack	Video:VGA (D-Sub 15 Pin), DVI-D, Component/Composite, HDMI Audio: Stereo Mini Jack	Video:VGA (D-Sub 15 Pin), DVI-D, Component/Composite, HDMI Audio: Stereo Mini Jack
	Output	Audio: Stereo Mini Jack	Audio: Stereo Mini Jack	Audio: Stereo Mini Jack	Audio: Stereo Mini Jack	Audio: Stereo Mini Jack	Audio: Stereo Mini Jack
	External Control	RS232C (In/Out) thru Stereo Jack	RS232C (In/Out) thru Stereo Jack	RS232C (In/Out) thru Stereo Jack	RS232C (In/Out) thru Stereo Jack	RS232C (In/Out) thru Stereo Jack	RS232C (In/Out) thru Stereo Jack
	External Sensor	N/A	N/A	N/A	N/A	Yes	Yes
Power	Power Supply	AC 100 - 240 V~ (+/- 10 %), 50/60 Hz	AC 100 - 240 V~ (+/- 10 %), 50/60 Hz	AC 100 - 240 V~ (+/- 10 %), 50/60 Hz	AC 100 - 240 V~ (+/- 10 %), 50/60 Hz	AC 100 - 240 V~ (+/- 10 %), 50/60 Hz	AC 100 - 240 V~ (+/- 10 %), 50/60 Hz
	Power Consumption (Typical / Max)	47W / 77W	76W / 110W	88W / 121W	120W / 165W	180W / 290W	247W / 360W
	Power Consumption (Standby)	< 0.5W	< 0.5W	< 0.5W	< 0.5W	< 1W	< 1W
Environmental Conditions	Operating Temperature	0°C~ 40°C	0°C~ 40°C	0°C~ 40°C	0°C~ 40°C	0°C~ 40°C	0°C~ 40°C
	Operating Humidity	10~80%	10~80%	10~80%	10~80%	10~80%	10~80%
Features	Special	Built in Speaker (10W + 10W), PIP/PBP, Narrow Bezel, Light Weight, RS232 In/Out, 1 D-Sub & 1 HDMI, No function key	Built in Speaker (10W + 10W), PIP/PBP, Narrow Bezel, Light Weight, RS232 In/Out, 1 D-Sub & 1 HDMI, No function key	Built in Speaker (10W + 10W), PIP/PBP, Narrow Bezel, Light Weight, RS232 In/Out, 1 D-Sub & 1 HDMI, No function key	Built in Speaker (10W + 10W), PIP/PBP, Narrow Bezel, Light Weight, RS232 In/Out, 1 D-Sub & 1 HDMI, No function key	Built in Speaker (10W + 10W), PIP/PBP, Narrow Bezel, Light Weight, RS232 In/Out, 1 D-Sub & 1 HDMI	Built in Speaker (10W + 10W), PIP/PBP, Narrow Bezel, Light Weight, RS232 In/Out, 1 D-Sub & 1 HDMI
	VESA Standard Wall Mount Interface	200 x 200mm	200 x 200mm	400 x 400mm	400 x 400mm	400 x 400mm	400 x 400mm
Dimensions	Product Dimension Without Stand (W x H x D)	29" x 17.1" x 3.7"	36.4" x 21.3" x 3.7"	41.6" x 24.2" x 3.7"	49.1" x 28.5" x 3.7"	57.8" x 33.4" x 2.55"	66.0" x 37.8" x 2.55"
	Packaging Dimension (W x H x D)	32.5" x 20.9" x 6.4"	39.6" x 24.2" x 6"	45.4" x 28.5" x 6.5"	54.4" x 33" x 6.7"	64.0" x 37.6" x 9.3"	72.9" x 43.3" x 19.2"
	Bezel Width	16.3mm (Bottom 20.4mm)	17.4mm (Bottom 20.4mm)	17.4mm (Bottom 20.8mm)	17.0mm (Bottom 21.5mm)	18.0mm (Bottom 23.5mm)	10.9mm (Bottom 16.9mm)
Weight	Product Weight	13.2 lbs.	20.5 lbs.	26.2 lbs.	40.3 lbs.	59.1 lbs.	63.5 lbs.
	Shipping Weight	16.8 lbs.	25.1 lbs.	32.2 lbs.	51.6 lbs.	74.1 lbs.	107.6 lbs.
Service	Standard Warranty	3 Year Onsite Parts/Labor	3 Year Onsite Parts/Labor	3 Year Onsite Parts/Labor	3 Year Onsite Parts/Labor	3 Year Onsite Parts/Labor	3 Year Onsite Parts/Labor
Accessories	Included	Quick Setup Guide, Warranty Card, D-Sub Cable, Power Cord, Remote Controller, Batteries	Quick Setup Guide, Warranty Card, D-Sub Cable, Power Cord, Remote Controller, Batteries	Quick Setup Guide, Warranty Card, D-Sub Cable, Power Cord, Remote Controller, Batteries	Quick Setup Guide, Warranty Card, D-Sub Cable, Power Cord, Remote Controller, Batteries	Quick Setup Guide, Warranty Card, D-Sub Cable, Power Cord, Remote Controller, Batteries	Quick Setup Guide, Warranty Card, D-Sub Cable, Power Cord, Remote Controller, Batteries
	Optional Stand	WMN4070SD, WMN250MD	WMN4070SD, WMN250MD	WMN4070SD, WMN250MD	WMN4270SD, WMN250MD	WMN4675MD	WMN4675MD
	Optional Mount	STN-L32D, STN-L3240E	STN-L32D, STN-L3240E	STN-L4055AD, STN-L4655E	STN-L4055AD, STN-L4655E	STN-L4055AD, STN-L6500E	STN-L75E
	Optional Media Player	N/A	N/A	N/A	N/A	PIM-BD7, PIM-BQ7P	PIM-BD7, PIM-BQ7P
	Optional HDBase-T	N/A	N/A	N/A	N/A	PIM-HDBT	PIM-HDBT
	Optional Touch Overlay	N/A	N/A	N/A	N/A	CY-TE65LCC, CY-TE65ECC	CY-TE75LCC, CY-TE75ECC
Green Management	Emission Standard	EMC	EMC	EMC	EMC	EMC	EMC
	ENERGY STAR® 5.0 Compliant	Yes	Yes	Yes	Yes	N/A	N/A
	RoHS Compliant	Yes	Yes	Yes	Yes	Yes	Yes
	Packaging Recyclability	Yes	Yes	Yes	Yes	Yes	Yes

CONNECTIVITY

1. HDMI In
2. Service
3. RGB In
4. DVI In
5. Component / Composite
6. Audio Out
7. RGB / HDMI Audio In
8. RS232C In
9. RS232C Out



For complete product information and accessories, visit samsung.com/business or samsung.com/prodisplay

Sales Support: 1-888-727-2664 or 1-866-SAM4BIZ | Follow us: youtube.com/samsungbizusa | @SamsungBizUSA

Samsung Electronics has been named 2013 ENERGY STAR Partner of the Year in the product manufacturing category by the U.S. Environmental Protection Agency (EPA).



©2014 Samsung Electronics America, Inc. Samsung is a registered mark of Samsung Electronics Corp., Ltd. Specifications and designs are subject to change without notice. Non-metric weights and measurements are approximate. All other brand, product, service names and logos are trademarks and/or registered trademarks of their respective manufacturers and companies. Simulated screen images. See samsung.com for detailed information. Printed in USA. LFD-EDDSERIESB2BDSD-IT-APP14T