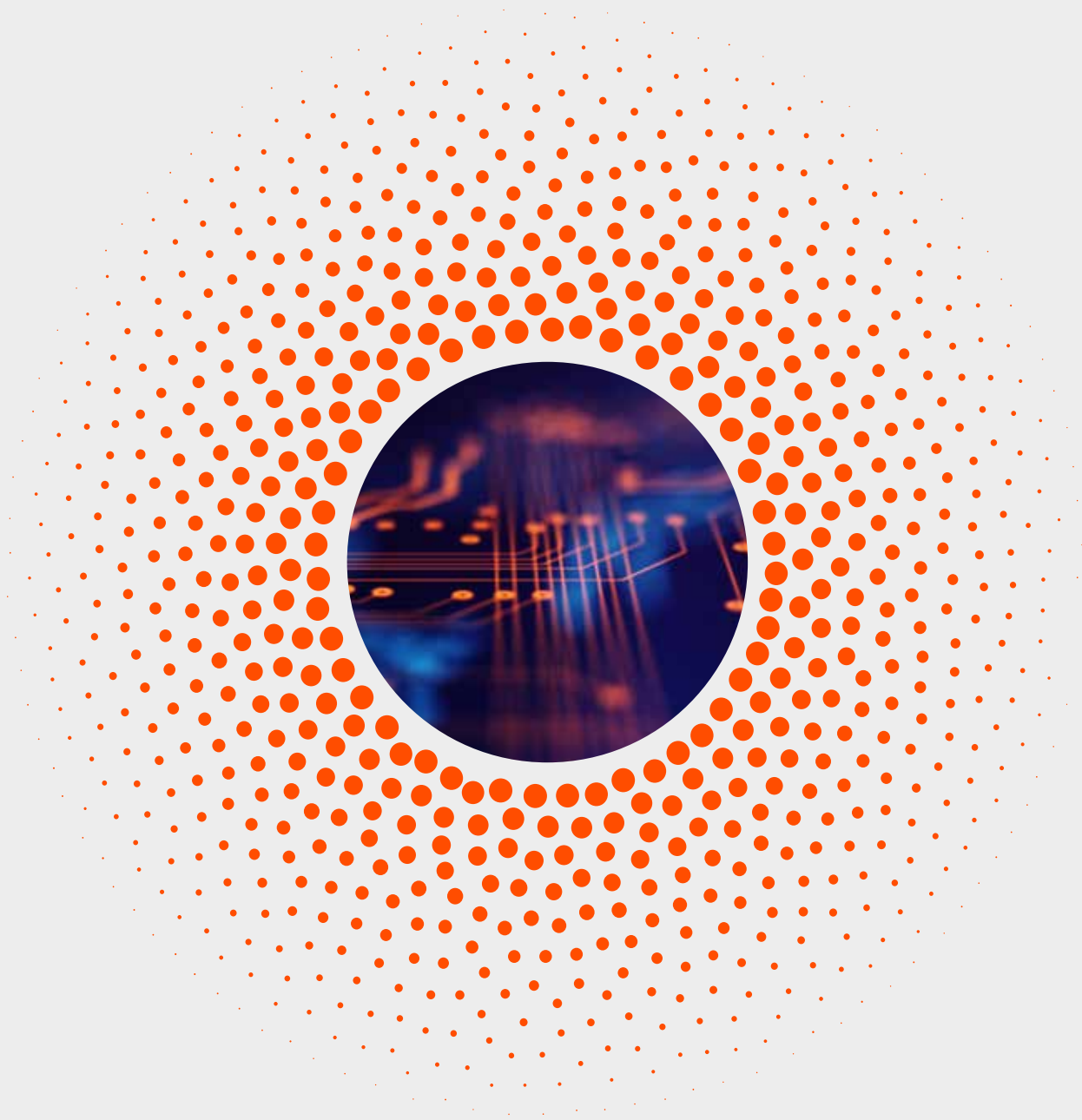




longline

NIC
Solutions
Introduction

longlinenetwork.com 🔍





COMPANY INTRODUCTION

Longline brand is a professional supplier of Ethernet solutions. It is also a technology enterprise that integrates R&D, production, sales and service of various Ethernet Interface Adapters. It has passed 1509001:2015, FCC, CE, ROHS and REACH certifications, and is a member of PCI-SIG.

Longline Ethernet solutions are widely used in professional fields such as Industrial Automation, Machine Vision, IDC, Cloud Computing, Huge Data Storage Center, and Network Security and so on, including copper and fiber network transmission, single port to eight ports, 100M to 40G, mainly based on Intel, Tehuti, Marvell, Broadcom controller. It has been expanding products with transceiver module, DAC, AOC, high speed cables etc.

Longline, which has proven itself in Industrial areas with its Network Cards, continues its R&D services uninterruptedly. In this context, it has become able to always respond to all the needs of the industry with its innovative and forward-looking goals.

Along with its respected business partners, Longline declares its being always ready to support you with its growing organization and staff that can instantly identify the problems of the sector and produce solutions.

LNG2004PT-POE

PCI-EXPRESS X4 QUAD PORT 802.3AT POE+ GIGABIT VISION FRAME GRABBER CARD (BASED ON INTEL I350)



KEY FEATURES

- Quad Port 100/1000Mbps Industry Adapter
- PCI Express (PCIe) v2.1(2.5GT/s) x4 lanes
- Supports +12V DC AT/ATX input
- Powered Device (PD) auto detection and classification per PoE+ port
- Support 802.3at and IEEE 802.3af, two port delivers up to 30W of power, 95W total power budget
- 2.25KV Isolation protection on LAN ports and power
- Support WOL,PXE boot

OVERVIEW

The LNG2004PT-POE is a kind of high-performance image capture card, independently researched and designed by LONGLINE. The cards supports 4 independent 10/100/1000BaseT(X) 802.3af & 802.3at (PoE) compliant Ethernet ports, With 12 VDC AT/ATX power input, the LNG2004PT-POE can boost then provides up to 25.5 watts at 48 VDC power to maximum 2 x PoE ports on each module.

It allows power to be supplied to connected devices, such as PoE-based Gigabit cameras in machine vision inspection systems, without the need to use separate PoE injectors for those applications. With its 2.25 KV isolation protection, and overload current/voltage protection on LAN ports, the LNG2004PT-POE is ideally designed for scientific and medical research Instrumentations, Machine Vision, Gigabit Ethernet surveillance IP cameras in intelligent transportation systems, which can also benefit from a scalable Gigabit backbone construction with Power-over-Ethernet support.

SPECIFICATIONS

Controller	Intel I350
Transmission Rate Per Port	100/1000Mbps
Network Standard Physical Layer Interfaces	1000BASE-T:Cat 5e or higher up to 100m 100BASE-Tx:Cat5/5e/6 or higher up to 100m
Jumbo Frame Support	Up to 9 KB.
Operating Temperature	0°C to 55 °C (32 °F to 131 °F)
Boot Option and Virtualization	PXE support, Intel® VT-c
POE Output	Supports 2 PoE+ ports up to 25.5W +2 PoE+ ports up to 15.4W
LED Indicators	PoE:Green 1000Mbps/s: Yellow Link and Green Ack,100Mbps/s: Green Link and Green Ack,
Operating System Support	Windows Server 2003 / 2008 /2008 R2 / 2012 /2012 R2 /2016 R2 Windows XP / Vista / 7 / 8 / 8.1 / 10 Linux Stable Kernel version 2.4.x / 2.6.x / 3.x / 4.x or later Linux SLES 9 / 10 / 11 or later VMware ESX/ESXi 4.x/5.x/6.x or later

ORDERING INFORMATION

Model	Description
LNG2004PT-POE	PCI-Express x4 Quad Port 802.3at PoE+ Gigabit Vision Frame Grabber Card Intel I350 Based (4*RJ45)
LNG5-1L Cable-3M/5M	Highly Flexible Cat.5e LAN cable, Single screw lock-type, 3M, 5M

LNG2002PT-POE

PCI-EXPRESS X4 DUAL PORT 802.3AT POE+ GIGABIT VISION FRAME GRABBER CARD (BASED ON INTEL 82576)



KEY FEATURES

- Dual Port 100/1000Mbps adapter
- PCI Express (PCIe) v2.0(2.5 GT/s) x1 lanes
- Dual Port PoE+ output power consumption up to 25.5W per port
- PCI Express (PCIe) +12V Power Supply
- Powered Device (PD) auto detection and classification per PoE+ port
- Support 802.3at and IEEE 802.3af
- Selected RJ45 connector with thickened gold to ensure more reliable connection
- Special screw lock to make sure the connection more stable
- Low profile and full-height bracket

OVERVIEW

LNG2002PT-POE is a PCIe x4 PoE Gigabit Dual Port Copper industrial Ethernet Server Adapter based on the Intel 82576EB chipset, and is compatible with x8,x16 lanes. The PoE adapter is designed mainly used on industrial field vision inspection server and equipment, vision field client, fast moving Ethernet data transmission equipment etc, also suitable for ordinary servers.

The LNG2002PT-POE interface designed for industrial cable access, with the LONGLINE customized industrial Ethernet cable, has screw to lock copper cable and RJ45 more stable, effectively solve the problem of the instability of industrial sites RJ45 connection copper cable, and be compatible with standard cable access. The larger heat sink can effectively solve the problem of heat dissipation of the PoE card under the condition of poor heat dissipation, and effectively ensure the stable operation of the PoE adapter card for a long time. Carefully selected RJ45 connector with thickened and deep gold to ensure more solid and reliable connectivity.

SPECIFICATIONS

Controller	Intel 82576
Transmission Rate Per Port	100/1000Mbps
Network Standard Physical Layer Interfaces	1000BASE-T:Cat 5e or higher up to 100m 100BASE-Tx:Cat5/5e/6 or higher up to 100m
Jumbo Frame Support	Up to 9 KB.
Operating Temperature	0°C to 55 °C [32 °F to 131 °F]
Boot Option and Virtualization	PXE support, Intel® VT-c
POE Output	Supports 2 PoE+ ports up to 30W at 48V DC
LED Indicators	PoE:Green 1000Mbps/s: Yellow Link and Green Ack,100Mbps/s: Green Link and Green Ack ,
Operating System Support	Windows Server 2003 / 2008 /2008 R2 / 2012 /2012 R2 /2016 R2 Windows XP / Vista / 7 / 8 / 8.1 / 10 Linux Stable Kernel version 2.4.x / 2.6.x / 3.x / 4.x or later Linux SLES 9/10/11 or later VMware ESX/ESXi 4.x/5.x/6.x or later

ORDERING INFORMATION

Model	Description
LNG2002PT-POE	PCI-Express x4 Dual Port 802.3at PoE+ Gigabit Vision Frame Grabber Card Intel 82576 Based (2*RJ45)
LNG5-1L Cable-3M/5M	Highly Flexible Cat.5e LAN cable, Single screw lock-type, 3M, 5M
LNG5-2L Cable-3M/5M	Highly Flexible Cat.5e LAN cable, Dual screw lock-type, 3M, 5M

LNG2001PT-POE

PCI-EXPRESS X1 SINGLE PORT 802.3AT POE+ GIGABIT VISION FRAME GRABBER CARD (BASED ON INTEL I210)



KEY FEATURES

- Single Port 100/1000Mbps Adapter
- PCI Express (PCIe) v2.1(2.5 GT/s) x1 lanes
- Single-port PoE output power consumption up to 25.5W
- Supports PCI-Express +12V Power Supply
- Powered Device (PD) auto detection and classification per PoE+ port
- Support 802.3at and IEEE 802.3af
- Selected RJ45 connector with thickened gold to ensure more reliable connection
- Special screw lock to make sure the connection more stable
- Low profile and full-height bracket

OVERVIEW

LNG2001PT-PCE is single-port copper Gigabit Ethernet PCI Express x1 PoE industrial adapter based on Intel I210 chip, compatible with PCIe x4, x8, and x16 channels. This server adapter is mainly designed for industrial field visual inspection servers and devices, visual field clients, fast Ethernet data transmission equipment etc, as well as general servers.

LNG2001PT-POE allows power to be supplied to connected devices, such as PoE-based Gigabit cameras in machine vision inspection systems, without the need to use separate PoE injectors for those applications. The interface designed for industrial-grade cable access with LONGLINE customized industrial cable can more securely lock the cable and network port, effectively solve the problem of unstable network ports and cable connections in industrial sites, also compatible with ordinary cable access.

SPECIFICATIONS

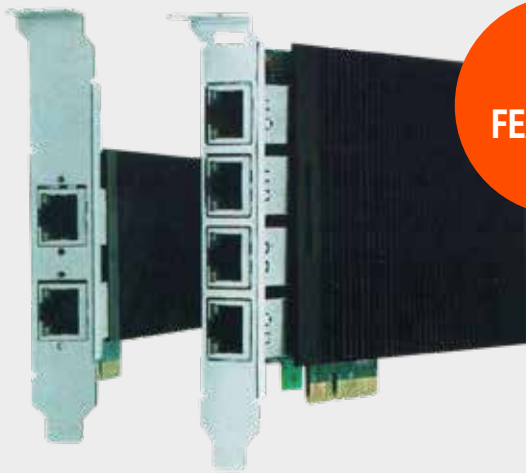
Controller	Intel I210
Transmission Rate Per Port	100/1000Mbps
Network Standard Physical Layer Interfaces	1000BASE-T: Cat 5e or higher up to 100m 100BASE-Tx: Cat5/5e/6 or higher up to 100m
Jumbo Frame Support	Up to 9 KB
Operating Temperature	0°C to 55 °C (32 °F to 131 °F)
Boot Option and Virtualization	PXE support, Intel® VT-c
POE Output	Supports PoE+ ports up to 30W at 48V DC
LED Indicators	PoE: Green 1000Mbps/s: Yellow Link and Green Ack, 100Mbps/s: Green Link and Green Ack,
Operating System Support	Windows Server 2008 / 2008 R2 / 2012 / 2012 R2 / 2016 R2 Windows Vista / 7 / 8 / 8.1 / 10 Linux Stable Kernel version 2.6.x / 3.x / 4.x or later Linux SLES 10 / 11 or later VMware ESX/ESXi 5.x/6.x or later

ORDERING INFORMATION

Model	Description
LNG2001PT-POE	PCI-Express x1 Single Port 802.3at PoE+ Gigabit Vision Frame Grabber Card Intel I210 Based (1*RJ45)
LNG5-1L Cable-3M/5M	Highly Flexible Cat.5e LAN cable, Single screw lock-type, 3M, 5M
LNG5-2L Cable-3M/5M	Highly Flexible Cat.5e LAN cable, Dual screw lock-type, 3M, 5M

LNG2003PT / LNG2005PT

PCI EXPRESS X4 DUAL / QUAD PORT COPPER GIGABIT INDUSTRY ETHERNET ADAPTER (BASED ON INTEL I350)



KEY FEATURES

- Dual/Quad Port 10/100/1000Mbps Industry Adapter
- PCI Express (PCIe) v2.1(2.5GT/s&5.0 GT/s) x4 lanes
- RJ45 Connectivity
- Network Virtualization
- Data Plane Development Kit (DPDK) support
- RJ45 connector with the thickening and sinking of gold
- Larger radiator ensures good heat dissipation.
- PXE boot

OVERVIEW

LNG2003PT/LNG2005PT is a PCIe v2.1 x4 Gigabit Dual/Quad Port Copper Industry Ethernet Adapter based on Intel I350 chipset, and is compatible with PCIe x8 and x16 slot. The adapter is designed mainly used on Machine Vision and Industrial Control., its separate network ports make more convenient to connect industry network cables. The adapter performance has been optimized while being designed to make system I/O no longer the bottleneck of high-end network application. The adapter can be grouped up together through its four ports to expand network bandwidth and ensure network performance. It can also real-time detect automatically and combine the communication route from the faulty port with others to achieve high-performance communications incessantly.

LNG2003PT/LNG2005PT is developed on the basis of Intel I350AM2/AM4 Dual-/Quad-Port Ethernet MAC+PHY controller, which can allow four ports to work in full-duplex work mode to adapt high-performance network communication in Gigabit Ethernet connection.

SPECIFICATIONS

Controller	Intel I350
Transmission Rate Per Port	10/100/1000Mbps
Network Standard Physical Layer Interfaces	1000BASE-T:Cat 5e or higher up to 100m 100BASE-Tx:Cat5/5e/6 or higher up to 100m 10BASE-T: Cat3/4/5/5e/6 or higher up to 100m
Jumbo Frame Support	Up to 9 KB.
Operating Temperature	0 °C to 55 °C [32 °F to 131 °F]
Boot Option and Virtualization	PXE support, Intel® VT-c
LED Indicators	1000Mbps/s: Yellow Link and Green Ack,100Mbps/s: Green Link and Green Ack , 10Mbps/s: Not illuminate
Operating System Support	Windows Server 2003 / 2008 /2008 R2 / 2012 /2012 R2 /2016 R2 Windows XP / Vista / 7 / 8 / 8.1 / 10 Linux Stable Kernel version 2.4.x / 2.6.x / 3.x / 4.x or later Linux SLES 9 / 10 / 11 or later VMware ESX/ESXi 4.x/5.x/6.x or later

ORDERING INFORMATION

Model	Description
LNG2003PT	PCI Express x4 Dual Port Copper Gigabit Industry Ethernet Adapter Intel I350 Based (2*RJ45)
LNG2005PT	PCI Express x4 Quad Port Copper Gigabit Industry Ethernet Adapter Intel I350 Based (4*RJ45)
LNG5-1L Cable-3M/5M	Highly Flexible Cat.5e LAN cable, Single screw lock-type, 3M, 5M
LNG5-2L Cable-3M/5M	Highly Flexible Cat.5e LAN cable, Dual screw lock-type, 3M, 5M

LNG9811BT / LNG9812BT

PCI-EXPRESS 3.0 X4 SINGLE / DUAL PORT COPPER 10 GIGABIT ETHERNET SERVER ADAPTER (BASED ON INTEL X550)



KEY FEATURES

- Single | Dual Port 10Gbps adapters
- PCI Express v3.0, 8.0 GT/s, x4 lanes
- Low cost, low power, 10 GbE performance for the entire datacenter
- Standard CAT 6a cabling with RJ45 connectors
- New generation single and dual port 10GBASE-T controller with integrated MAC and PHY
- Multiple Queues - 64 Tx and Rx Per Port
- Unified networking delivering LAN iSCSI and FCoE in one low-cost CNA
- Low profile and full-height bracket

OVERVIEW

LNG9811BT / LNG9812BT is a PCIe x4 3.0 10Gbps Single/Dual Port Ethernet Server Adapter based on Intel X550 chipset, independently developed by Shenzhen Lianrui Electronics CO., Ltd, and is compatible with PCIe x8,x16 slot. This adapter card optimizes its performance, making the system I/O no longer be the bottleneck of the network application.

The Server Adapter LNG9811BT | LNG9812BT Simplifies Migration to 10 Gigabit Ethernet (GbE), Provides iSCSI FCoE Virtualization and Flexible Port Partitioning (FPP).

SPECIFICATIONS

Controller	Intel X550
Transmission Rate Per Port	100/1000Mbps
Network Standard Physical Layer Interfaces	10G: Cat-6A or higher up to 100m 10G: Cat-6/Cat-5e or higher up to 55m 100M/1000M: Cat-5/Cat-5e / Cat-6 or higher up to 100m
Jumbo Frame Support	Up to 9 KB
Operating Temperature	0 °C to 55 °C (32 °F to 131 °F)
Boot Option and Virtualization	PXE support, Intel® VT-c
LED Indicators	10000Mbps/s: Yellow Link and Green Ack, 100/1000Mbps/s: Green Link and Green Ack ,
Operating System Support	Windows Server 2003 / 2008 /2008 R2 / 2012 /2012 R2 /2016 R2 Windows XP / Vista / 7 / 8 / 8.1 / 10 Linux Stable Kernel version 2.4.x / 2.6.x / 3.x / 4.x or later Linux SLES 9 / 10 / 11 or later VMware ESX/ESXi 4.x/5.x/6.x or later

ORDERING INFORMATION

Model	Description
LNG9811BT	PCI-Express x4 Single Port Copper 10 Gigabit Ethernet Server Adapter Intel X550 Based (1 * RJ45)
LNG9812BT	PCI-Express x4 Dual Port Copper 10 Gigabit Ethernet Server Adapter Intel X550 Based (2 * RJ45)
LNG5-1L Cable-3M/5M	Highly Flexible Cat.5e LAN cable, Single screw lock-type, 3M, 5M

LNG9222PT / LNG9224PT

PCI EXPRESS X1 DUAL/ QUAD PORT COPPER GIGABIT ETHERNET DESKTOP ADAPTER (BASED ON INTEL I350)



KEY FEATURES

- Dual | Quad Port 10/100/1000Mbps adapters
- PCI Express v2.1,(5.0GT/s) xl lane
- RJ45 Connectivity
- Support PCI-SIG SR-IOV
- Support Jumbo Frame up to 9.5KB
- Flexible I/O virtualization for port partitioning and quality of service (QoS) of up to 32 virtual ports
- IEEE 802.1q VLAN support with VLAN tag insertion
- Low profile and full height bracket

OVERVIEW

LNG9222PT/LNG9224PT is a PCIe xl 1Gbps Quad Port Ethernet Copper Desktop Adapter based on Intel I350 chipset, is compatible with PCIe x4, x8 and xl6 slot. The adapter is mainly used on Industrial PCs and its performance has been optimized while being designed, which makes system I/O no longer be the bottleneck on the application of high-end network. The adapter can be grouped up together through its four ports to expand network bandwidth and ensure network performance. It can also real-time detect automatically and combine the communication route from the faulty port with others to achieve high-performance communications incessantly.

SPECIFICATIONS

Controller	Intel I350
Transmission Rate Per Port	10/100/1000Mbps
Network Standard Physical Layer Interfaces	1000BASE-T:Cat 5e or higher up to 100m 100BASE-Tx: Cat5/5e/6 or higher up to 100m 10BASE-T: Cat3/4/5/5e/6 or higher up to 100m
Jumbo Frame Support	Up to 9.5 KB
Operating Temperature	0°C to 55 °C [32 °F to 131 °F]
Boot Option and Virtualization	PXE support, Intel® VT-c
LED Indicators	1000Mbps/s: Yellow Link and Green Ack, 100Mbps/s: Green Link and Green Ack ,10Mbps/s: Not illuminate
Operating System Support	Windows Server 2003 / 2008 / 2008 R2 / 2012 /2012 R2 / 2016 R2 Windows XP/ 7/8/8.1/10 Linux Stable Kernel version 2.4.x/2.6.x/3.x/4.x or later VMware ESX/ESXi 4.x/5.x/6.x or later

ORDERING INFORMATION

Model	Description
LNG9222PT	PCI Express xl Dual Port Copper Gigabit Ethernet Desktop Adapter Intel I350 Based (2*RJ45)
LNG9224PT	PCI Express xl Quad Port Copper Gigabit Ethernet Desktop Adapter Intel I350 Based (4*RJ45)
LNG5-1L Cable-3M/5M	Highly Flexible Cat.5e LAN cable, Single screw lock-type, 3M, 5M

LNG9204CT

PCI EXPRESS X1 SINGLE PORT COPPER GIGABIT ETHERNET ADAPTER (BASED ON INTEL I210)



KEY FEATURES

- Single Port 10/100/1000Mbps adapter
- PCI Express (PCIe) 2.1 (2.5 GT/s) x1 lane
- RJ45 Connectivity
- Low-cost, low-power
- WOL,PXE Support
- Innovative power management features
- MSI,MSI-X support
- Excellent small packet performance for network appliances
- Low profile and full-height bracket

OVERVIEW

LNG9204CT is PCI Express x1 Gigabit Ethernet desktop network adapter based on Intel I210AT solution. The Gigabit adapter adopts a compact design and does not reduce the performance of the NIC.

The adapter adopts Ethernet power management technologies such as Energy Efficient Ethernet and DMA Merge, and has 4 transmit and 4 receive queues, error correction memory protection and other technologies to improve the reliability of data transmission. Manage latency data packets efficiently by combining parallel and pipe-lined logical architectures.

The adapter has high-performance network data transmission on the machine bus architecture, compatible with Ethernet

SPECIFICATIONS

Controller	Intel I210
Transmission Rate Per Port	10/100/1000Mbps
Network Standard Physical Layer Interfaces	1000BASE-T:Cat 5e or higher up to 100m 100BASE-Tx: Cat5/5e/6 or higher up to 100m 10BASE-T: Cat3/4/5/5e/6 or higher up to 100m
Jumbo Frame Support	Up to 9.5 KB
Operating Temperature	0°C to 55 °C (32 °F to 131 °F)
Network Virtualization	VXLAN, MACinUDP, NVGRE, IPinGRE
LED Indicators	1000Mbps/s: Yellow Link and Green Ack, 100Mbps/s: Green Link and Green Ack ,10Mbps/s: Not illuminate
Operating System Support	Windows Server 2008 /2008 R2 / 2012 /2012 R2 /2016 R2 Windows 7/8/8.1/10 Linux Stable Kernel version 2.6.32/3.x/4.x or later VMware ESX/ESXi 5.x/6.x or later

ORDERING INFORMATION

Model	Description
LNG9204CT	PCI Express x1 Single Port Copper Gigabit Ethernet Adapter Intel I210 Based (1*RJ45)
LNG5-1L Cable-3M/5M	Highly Flexible Cat.5e LAN cable, Single screw lock-type, 3M, 5M

LNG9201CT

PCI EXPRESS X1 SINGLE PORT COPPER GIGABIT ETHERNET DESKTOP ADAPTER (BASED ON INTEL 82574)



KEY FEATURES

- Single Port 10/100/1000Mbps adapter
- PCI Express 1.1 (2.5 GT/s) xl lane
- RJ45 Connectivity
- Flow Control Support
- IPv4 and IPv6 checksum offload support
- PXE support
- Receive Side Scaling (RSS) with two hardware receive queues
- 9 KB jumbo frame support
- VLAN support compliant with the 802.1Q Specification
- Low profile and full-height bracket

OVERVIEW

LNG9201CT is a PCIe single port Gigabit Ethernet desktop adapter based on Intel 82574 chipset, and is compatible with xl x4,x8, xl6 slot. This Gigabit controller has higher performance and can reduce the CPU occupancy rate.

Adopts Ethernet power management technologies such as Energy Efficient Ethernet and DMA Merge, and has 4 transmit and - receive queues, error correction memory protection and other technologies to improve the reliability of data transmission Manage latency data packets efficiently by combining parallel and pipe-lined logical architectures.

LNG9201CT have high-performance network data transmission on the machine bus architecture, compatible with Ethernet am fast Ethernet to greatly reduce customer deploy me nt and training costs.

SPECIFICATIONS

Controller	Intel 82574
Transmission Rate Per Port	10/100/1000Mbps
Cable Requirement	Cat 5 up to 100M
Jumbo Frame Support	Up to 9.5 KB
Operating Temperature	0°C to 55 °C (32 °F to 131 °F)
LED Indicators	LINK/ACTMTY LED: off=NO LINK; on=LINK; blinking=ACTIVITY
Operating System Support	Windows XP / Vista / 7 / 8 / 8.1 / 10 Windows Server 2003 / 2008 / 2008 R2 / 2012 / 2012R2 / 2016 R2 Linux Stable Kernel version 2.4.x / 2.6.x / 3.x/4.x or later FreeBSD 4.x /5.x /6.x or later Novell Netware 4.x / 5.x / 6.x or later VMware ESX/ESXi 4.x/5.x/6.x or later

ORDERING INFORMATION

Model	Description
LNG9201CT	PCI Express xl Single Port Copper Gigabit Ethernet desktop Adapter Intel 82574 based (1*RJ45)
LNG5-1L Cable-3M/5M	Highly Flexible Cat.5e LAN cable, Single screw lock-type, 3M, 5M
LNG5-2L Cable-3M/5M	Highly Flexible Cat.5e LAN cable, Dual screw lock-type, 3M, 5M



LNG5-1L CABLE-3M/5M / LNG5-2L CABLE-3M/5M

HIGHLY FLEXIBLE CAT.5E LAN CABLE, SINGLE / DUAL SCREW LOCK-TYPE, 3M, 5M



KEY FEATURES

- Compliance with UL Style No.20276 Standard
- The special braided shield increases noise immunity
- It supports industrial high-speed camera image transmission formats
- It has an oil resistant sheath, making it suitable for use in factory environments, for example
- It can be used with general shielded modular plugs.
- It uses HIROSE (HRS) Category 5 Shielded Connectors
- It uses CommScope Screw lock-type Connectors

OVERVIEW

This cable is intended for movable applications. It uses high flexibility special polymer insulation and a special braided shield, resulting in high bending resistance and high sliding resistance, and can also withstand twisting motion.

This cable is particularly suitable for applications between Main station and Slave unit, like automatically operated, transported, or warehoused and others, which is need long-term reciprocating bending and other movements.

SPECIFICATIONS

The special braided shield increases noise immunity,
 It supports industrial high-speed camera image transmission formats,
 It has an oil resistant sheath, making it suitable for use in factory environments, for example.
 It can be used with general I shielded modular plugs.
 It uses HIROSE (HRS) Category 5 Shielded Connectors
 It uses CommScope Screw lock-type Connectors

ORDERING INFORMATION

Model	Description
LNG5-1L Cable-3M/5M	Highly Flexible Cat.5e LAN cable, Single screw lock-type, 3M, 5M
LNG5-2L Cable-3M/5M	Highly Flexible Cat.5e LAN cable, Dual screw lock-type, 3M, 5M



SERVER ETHERNET SOLUTIONS

SERVER FIBER ETHERNET SOLUTIONS
SERVER COPPER ETHERNET SOLUTIONS

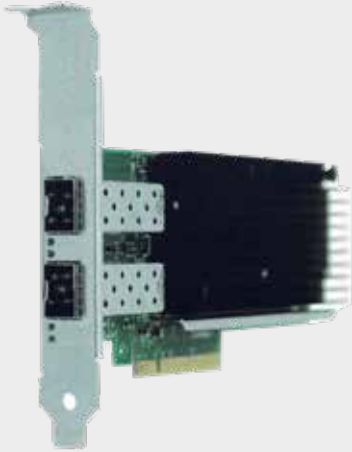
SERVER ETHERNET SOLUTIONS CAN SOLVE
THE VARIOUS PROBLEMS FACED BY IT
PROFESSIONALS, INCREASE NEEDS FOR
NETWORK BANDWIDTH AND DATA CENTER
FLEXIBILITY.

APPLICATIONS:
High-performance Computing Clusters
Server
Storage
Internet Data Center
Network Security



LNG1001PF-2SFP28

PCI EXPRESS X8 DUAL PORT SFP28 25 GIGABIT ETHERNET SERVER ADAPTER (BASED ON INTEL XXV710)



KEY FEATURES

- Dual-port 1GbE/10GbE/25GbE adapters
- PCI Express (PCIe) v3.0,(8.0 GT/s) x8 lanes
- SFP28 Connectivity
- PXE,iSCSI boot
- Network Virtualization
- IEEE 802.3by and 25GE specification compliance
- Data Plane Development Kit (DPDK) support
- Excellent small packet performance for network appliances and Network Functions Virtualization (NFV)
- Low profile and full-height bracket

OVERVIEW

LNG1001PF-2SFP28 is a PCIe x8 3.0 25Gbps Dual Port SFP28 Ethernet Fiber Server Adapter based on Intel XXV710 chipset, compatible with PCIe x16 slot. The server adapter can meet the demanding of next-generation data centers by providing unmatched features for both server and network virtualization, providing a reliable performance in a flexible LAN and SAN networks.

The server adapter LNG1001PF-2SFP28 delivers an excellent performance for 25GbE connectivity that is backwards compatible with 1/10GbE, making migration to a higher speed easier.

SPECIFICATIONS

Controller	Intel XXV710
Transmission Rate Per Port	1GbE/10GbE/25GbE
Network Standard Physical Layer Interfaces	25GBASE-SR/LR (optical transceivers) \ 25GBASE-CR (DAC) 10GBASE-SR/LR (optical transceivers) \ 10GbE SFP+ DAC 1000BASE-SX/LX (optical transceivers) \ 1GbE SFP DAC
Jumbo Frame Support	Up to 9.5 KB
Operating Temperature	0°C to 50 °C (32 °F to 122 °F)
Network Virtualization	VXLAN, MACinUDP, NVGRE, IPinGRE
LED Indicators	Link Green, 25Gb/s: Green blinking, 10Gb/s: Yellow blinking, 1Gb/s: Not bright
Operating System Support	Windows Server 2008 R2 / 2012 R2 / 2016 R2 Windows 7 x64 / 8 / 8.1 / 10 Linux Stable Kernel version 2.6.32/3.x/4.x or later VMware ESX/ESXi 5.5/6.X or later

ORDERING INFORMATION

Model	Description
LNG1001PF-2SFP28	PCI Express x8 Dual-Port SFP28 25 Gigabit Ethernet Server Adapter Intel XXV710 Based (2*SFP28)
L RTP8525-X1ATL	25GBASE-SR MMF Up to 70m on OM3 MMF and 100m on OM4 MMF
L RTP1325-10ATL	25GBASE-LR SMF Up to 10km
SFP28-AOC-XM	850nm 25G AOC, 1M,2M, 3M,5M...



LNG9901BF-QSFP+/LNG9902BF-2QSFP+

PCI EXPRESS X8 SINGLE / DUAL PORT 40 GIGABIT ETHERNET SERVER ADAPTER (BASED ON INTEL XL710)



KEY FEATURES

- Single/Dual Port 40 GbE adapter
- PCI Express 3.0 (8.0 GT/s) x8 lanes
- Q.SFP+Connectivity
- Network Virtualization
- iSCSI,PXE,DPDK support
- Flexibility for LAN and SAN networks,
- MSI-X supports Multiple Independent Queues, 1,536 Tx and Rx queues per port
- Low profile and full-height bracket

OVERVIEW

LNG9901BF-QSFP+/LNG9902BF-2QSFP+ is a PCIe x8 40Gbps Single-Port/Dual-Port Fiber Server Ethernet Adapter based on Intel XL710 chipset, and is compatible with PCIe xl6 slot. In addition to managing MAC and PHY Ethernet layer functions, the controller manages PCI Express packet traffic across its transaction, link, and physical/logical layers. Using hardware acceleration, the controller offloads tasks from the host, such as TCP/UDP/IP checksum calculations and TCP segmentation. The product of this series is the ideal solution for implementing multiple network segments, mission-critical high-powered networking applications and environments within high performance servers.

SPECIFICATIONS

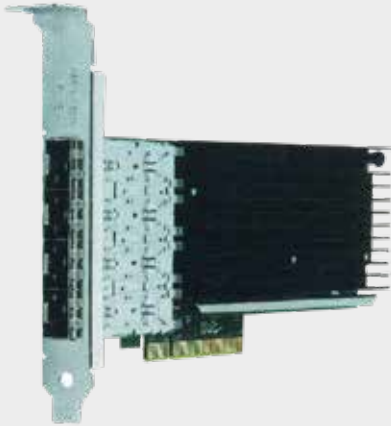
Controller	Intel XL710
Transmission Rate Per Port	40 Gbps
Network Standard Physical Layer Interfaces	40GBASE-SR4/LR4 40GbEQSFP+ AOC/DAC
Jumbo Frame Support	Up to 9.5 KB
Operating Temperature	0 °C to 55 °C [32 °F to 131 °F]
Network Virtualization	VXLAN,NVGRE,Geneve,Network Service Headers (NSH),VEPA,VEB
LED Indicators	40Gbps:Yellow LINK on; Blue ACT blink
Operating System Support	Windows Server 2008 R2 / 2012 / 2012 R2 / 2016 R2 Windows 7/8/8.1/10 Linux Stable Kernel version 2.6.x / 3.x / 4.x or later VMware ESX/ESXi 5.x/6.x or later

ORDERING INFORMATION

Model	Description
LNG9901BF-QSFP+	PCI Express x8 Single Port 40 Gigabit Ethernet Server Adapter Intel XL710BM1 Based (1*QSFP+)
LNG9902BF-2QSFP+	PCI Express x8 Dual Port 40 Gigabit Ethernet Server Adapter Intel XL710BM2 Based (2*QSFP+)
LNGQ8540-X1ATM	40GBASE-SR MMF Up to 100M
LNG1340-10ATM	40GBASE-LR SMF Up to 10KM
QSFP+AOC-xM	QSFP+ to QSFP+ AOC IM, 2M,3M...
QSFP+-4xSFP+-xM	QSFP+ to 4xSFP+ AOC IM, 2M,3M...

LNG9804BF-4SFP+

PCI EXPRESS X8 QUAD PORT SFP+ 10 GIGABIT ETHERNET SERVER ADAPTER (BASED ON INTEL XL710)



KEY FEATURES

- Quad-port 10GbE server adapters
- PCI Express v3.0, 8.0 GT/s, x8 lanes
- SFP+ Connectivity
- PXE,iSCSI boot
- Network Virtualization
- IEEE 802.lq and 10G Ethernet specification compliance
- Data Plane Development Kit (DPDK) support
- Excellent small packet performance for network appliances and Network Functions Virtualization (NFV)
- Low profile and full-height bracket

OVERVIEW

LNG9804BF-4SFP+ is a PCIe x8 10Gbps Quad Port SFP+ server adapter based on the Intel XL710 chipset and is compatible with PCIe x16 slot. The server adapter has a flexible 4 port 10GbE connection rate on a PCI Express V3.0 x8 slot, which is convenient for use in a use environment with multiple network requirements.

The Server Adapter addresses the demanding needs of the next-generation agile data center by providing unmatched features for both server and network virtualization, flexibility for LAN and SAN networks and proven, reliable performance.

LNG9804BF-4SFP+ is good solution for multiple networks and deploying key network applications and environments on high-performance servers.

SPECIFICATIONS

Controller	Intel XL710
Transmission Rate Per Port	10000Mbps
Network Standard Physical Layer Interfaces	10GBASE-SR, 10GBASE-LR 10GSFP+ DAC/AOC
Jumbo Frame Support	Up to 9.5 KB
Operating Temperature	0°C to 55 °C (32 °F to 131 °F)
Network Virtualization	VLAN, VLAN tag, VXLAN, NVGRE, GENEVE, VLMB
LED Indicators	Link Yellow, 10Gb/s: Green blinking
Operating System Support	Windows Server 2008 R2 / 2012 / 2012 R2 / 2016 R2 Windows 7/8/8.1/10 Linux Stable Kernel version 2.6.x/3.x/4.x or later VMware ESX/ESXi 5.x/6.x or later

ORDERING INFORMATION

Model	Description
LNG9804BF-4SFP+	PCI-Express x8 Quad Port SFP+ 10 Gigabit Ethernet Server Adapter Intel XL710 Based (4*SFP+)
LNG8510-X3ATL	SFP+ Duplex 10Gbps 3.3V Multi-Mode Transceiver ,850nm 0.3km
LNG1310-10ATL	SFP+ Duplex 10Gbps 3.3V Single-Mode Transceiver, 1310nm , 10km
SFP+-10G-CU1/3/5M	10 Gigabit SFP+ Direct Attached Cable 1/3/5m
SFP+-AOC-3M	10 Gigabit Active Optical Cable Assembles 3m

LNG9812BF-2SFP+

PCI EXPRESS X8 DUAL PORT SFP+ 10 GIGABIT ETHERNET SERVER ADAPTER (BASED ON INTEL X710)



KEY FEATURES

- Dual Port 10GbE adapters
- PCI Express (PCIe) v3.0,(8.0GT/s) x8 lanes
- SFP+ Connectivity
- Network Virtualization
- Exceptional Low Power Adapters
- IEEE 802.3ad and 10G Ethernet specification compliance
- Data Plane Development Kit (DPDK) support
- Excellent small packet performance for network appliances and Network Functions Virtualization (NFV)
- Low profile and full height bracket

OVERVIEW

LNG9812BF-2SFP+ is LONGLINE a new generation of high-performance server network adapter, based on the Intel X710-BM2 controller. The Server Adapter addresses the demanding needs of the next-generation agile data center by providing unmatched features for both server and network virtualization, flexibility for LAN and SAN networks and proven, reliable performance.

The LNG9812BF-2SFP+ adapter deliver superior performance in a PCI Express v3.0 x8 slot. Optimized performance vectors and key uses include: Small Packet Performance, Bulk Transfer Performance, Network Virtualization, Storage Performance and so on.

SPECIFICATIONS

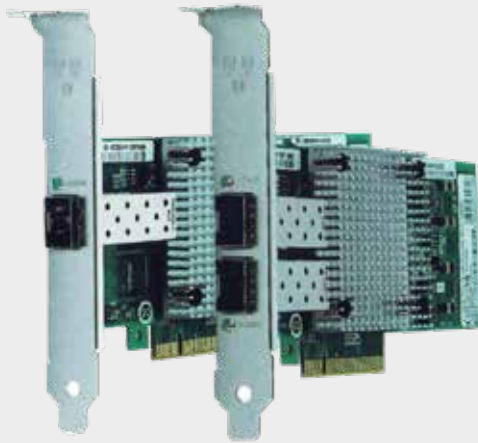
Controller	Intel X710
Transmission Rate Per Port	10GbE
Network Standard Physical Layer Interfaces	10GBASE-SR 10GBASE-LR 10G SFP+ DAC/AOC
Jumbo Frame Support	Up to 9.5 KB
Operating Temperature	0 °C to 55 °C [32 °F to 131 °F]
Network Virtualization	VLAN, VLAN tag, VXLAN, NVGRE, GENEVE,VLMB
LED Indicators	10Gb/s= ACK Yellow and Link Green
Operating System Support	Windows Server 2008 R2 / 2012 / 2012 R2 / 2016 R2 Windows 7/8/8.1/10 Linux Stable Kernel version 2.6.x/3.x/4.x or later VMware ESX/ESXi 5.x/6.x or later

ORDERING INFORMATION

Model	Description
LNG9812BF-2SFP+	PCI Express x8 Dual Port SFP+ 10 Gigabit Ethernet Server Adapt(u Intel X710 Based [2*SFP+]
LNG8510-X3ATL	SFP+ Duplex 10Gbps 3.3V Multi-Mode Transceiver ,850nm 0.3km
LNG1310-10ATL	SFP+ Duplex 10Gbps 3.3V Single-Mode Transceiver, 1310nm , 10km
SFP+-10G-CUxM	10G SFP+ DAC (Direct Attached Cable) 1M,3M,5M,10M
SFP+-AOC-3M	10 Gigabit Active Optical Cable Assembles 3m

LNG9801BF-SFP+ / LNG9802BF-2SFP+

PCI-EXPRESS X8 SINGLE / DUAL PORT SFP+ 10 GIGABIT ETHERNET SERVER ADAPTER (BASED ON INTEL 82599)



KEY FEATURES

- Single / Dual Port 10 GbE adapters
- PCI Express 2.0 (5 GT/s)x 8 lanes
- SFP+ Connectivity
- Network Virtualization
- PXE,FCoE,iSCSI remote boot support
- IEEE 802.3ad and 10G Ethernet specification compliance
- Data Plane Development Kit (DPDK) support
- Multiple Queues: 128 Tx and Rx queues per port
- Low profile and full-height bracket

OVERVIEW

LNG9801BF-SFP+ / LNG9802BF-2SFP+ is a PCIe x8 2.0 10Gbps Single/Dual Port Ethernet Fiber Server Adapter based on Intel 82599 Chipset. The design of this server adapter card is mainly for servers and high-end devices, such as High Performance Computing (HPC), database clusters, and video-on-demand are driving the need for 10 Gigabit connections. Customers require flexible and scalable I/O solutions to meet the rigorous requirements of running mission-critical applications in virtualized and unified storage environments. The Server Adapter LNG9801BF-SFP+ / LNG9802BF-2SFP+ Provides a number of hardware optimization features including I/O virtualization, and supports a unified network, transforming the data center with outstanding reliability, scalability, and mobility. It can also support iSCSI guide and iSCSI WOL.

SPECIFICATIONS

Controller	Intel 82599
Transmission Rate Per Port	10GbE
Network Standard Physical Layer Interfaces	10GBASE-SR 10GBASE-LR 10G SFP+DAC/AOC
Jumbo Frame Support	Up to 9.5 KB
Operating Temperature	0°C to 55 °C (32 °F to 131 °F)
Network Virtualization	VLAN, VLAN tag, VXLAN, NVGRE, GENEVE, VLMB
LED Indicators	10Gb/s= ACK Yellow and Link Green
Operating System Support	Windows Server 2003 / 2008 R2 / 2012 / 2012 R2 / 2016 R2 Windows 7/8/8.1/10 Linux Stable Kernel version 2.4.x / 2.6.x/3.x/4.x or later VMware ESX/ESXi 4.x / 5.x / 6.x or later

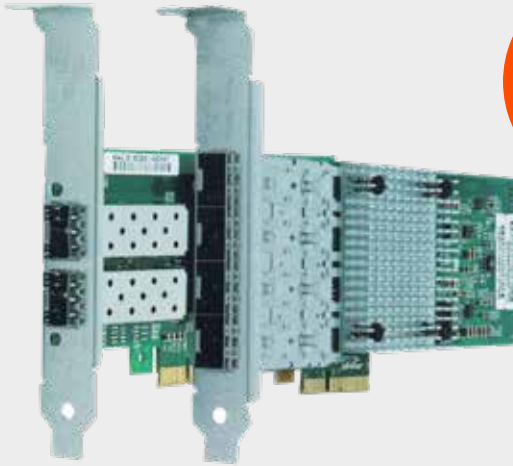
ORDERING INFORMATION

Model	Description
LNG9801BF-SFP+	PCI-Express x8 Single Port Gigabit Ethernet Server Adapter Intel 82599 Based (1 *SFP+)
LNG9802BF-2SFP+	PCI-Express x8 Dual Port Gigabit Ethernet Server Adapter Intel 82599 Based (2*SFP+)
LNG8510-X3ATL	SFP+ Duplex 10Gbps 3.3V Multi-Mode Transceiver ,850nm 0.3km
LNG1310-10ATL	SFP+ Duplex 10Gbps 3.3V Single-Mode Transceiver, 1310nm , 10km
SFP+-10G-CUxM	10G SFP+ DAC (Direct Attached Cable) 1M,3M,5M,10M
SFP+-AOC-3M	10 Gigabit Active Optical Cable Assemblies 3m



LNG9712HF-2SFP/LNG9714HF-4SFP

PCI-EXPRESS X4 DUAL / QUAD PORT SFP GIGABIT ETHERNET SERVER ADAPTER (BASED ON INTEL I350)



KEY FEATURES

- Dual/Quad Port Gigabit Fiber Ethernet Adapter
- PCI Express (PCIe) v2.1(2.5GT&5.0GT/s) x4 lanes
- SFP Connectivity
- Network Virtualization
- Flexible I/O virtualization for port partitioning and QoS of up to 32 virtual ports
- IEEE 802.1q VLAN support with VLAN tag insertion
- Low profile and full-height bracket

OVERVIEW

LNG9712HF-2SFP/LNG9714HF-4SFP is a PCIe x4 1Gbps Dual-Port/Quad-Port SFP Server Fiber Ethernet Adapter based on Intel I350 AM2/AM4 chipset, compatible with PCIe x8 and x16 slot. The adapter is mainly used on a server workstation and its performance has been optimized while being designed, which makes system I/O no longer be the bottleneck on the application of high-end network. The adapter can be grouped up together through its two or four ports to expand network bandwidth and ensure network performance. It can also real-time detect automatically and combine the communication route from the faulty port with others to achieve high-performance communications incessantly.

SPECIFICATIONS

Controller	Intel I350
Transmission Rate Per Port	1GbE
Network Standard Physical Layer Interfaces	1000BASE-SX 1000BASE-LX
Jumbo Frame Support	Up to 9.5 KB
Operating Temperature	0 °C to 55 °C (32 °F to 131 °F)
Boot Option and Virtualization	PXE support, Intel® VT-c
LED Indicators	Link LED: Green; ACT LED:Yellow
Operating System Support	Windows Server 2003 / 2008 /2008 R2 / 2012 /2012 R2 /2016 R2 Windows XP / Vista / 7 / 8 / 8.1 / 10 Linux Stable Kernel version 2.4.x / 2.6.x / 3.x / 4.x or later VMware ESX/ESXi 4.x/5.x/6.x or later

ORDERING INFORMATION

Model	Description
LNG9712HF-2SFP	PCI-Express x4 Dual Port Gigabit Ethernet Server Adapter Intel I350 Based (2*SFP)
LNG9714HF-4SFP	PCI-Express x4 Quad Port Gigabit Ethernet Server Adapter Intel I350 Based (4*SFP)
LNG8512-X5ATL	1.25Gbps SFP Multi-Mode Transceiver, 850nm,550M
LNG1312-20ATL	1.25Gbps SFP Single-Mode Transceiver,1310nm,20KM

LNG9710HF-TX/RX

PCI EXPRESS X4 GIGABIT ONE-WAY TRANSMISSION ETHERNET SERVER ADAPTER (BASED ON INTEL I350)



KEY FEATURES

- One-Way Gigabit Adapter
- Dual/Quad Port Gigabit Fiber Ethernet Adapter
- Single LC Connectivity
- PXE boot
- Network Virtualization
- Data Plane Development Kit (DPDK) support
- Excellent small packet performance for network appliances and Network Functions Virtualization (NFV)
- Low profile and full-height bracket

OVERVIEW

LNG9710HF-TX/RX is used the latest optical fiber One-way transmission technology, effectively guarantee the stability of data transmission, reduce the packet loss rate. Since the one-way transmission characteristics of light, this Ethernet Adapter has not only achieved physical separation between the internal computer network and the external network, but also ensured the data between internal and external networks in real time, reliable, secure One-way transmission.

LNG9710HF-TX/RX adapter can be widely used in public security, government systems, military and other security departments as well as used in other confidential computer network.

SPECIFICATIONS

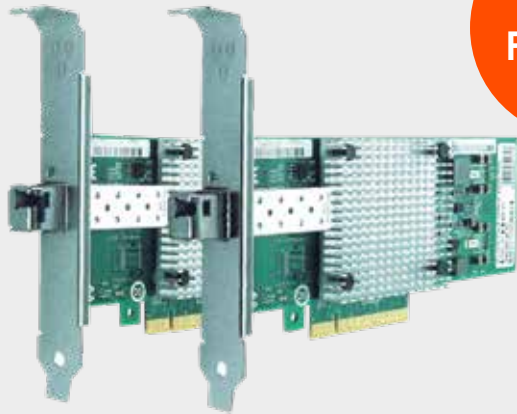
Controller	Intel I350
Transmission Rate Per Port	1GbE
Network Standard Physical Layer Interfaces	1000BASE-LX
Jumbo Frame Support	Up to 9.5 KB
Operating Temperature	0°C to 55 °C [32 °F to 131 °F]
LED Indicators	Link/Activity LED: Off = No Link; On = Link; Blinking = Activity
Operating System Support	Windows Server 2003 / 2008 / 2008 R2 / 2012 / 2012 R2 / 2016 R2 Windows 7/8/8.1/10 Linux Stable Kernel version 2.6.32/3.x/4.x or later VMware ESX/ESXi 4.x/5.x/6.x or later

ORDERING INFORMATION

Model	Description
LNG9710HF-TX	PCI Express x4 Gigabit TX One-way Transmit Ethernet Server Adapter Intel I350 Based (1*LC SM)
LNG9710HF-RX	PCI Express x4 Gigabit RX One-way Receive Ethernet Server Adapter Intel I350 Based (1*LC SM)

LNG9801BF-TX/RX

PCI EXPRESS X8 10 GIGABIT ONE-WAY TRANSMISSION ETHERNET SERVER ADAPTER (BASED ON INTEL 82599)



KEY FEATURES

- One-way 10 Gigabit adapters
- PCI Express (PCIe) v2.0, 5 GT/s, x8 lanes
- Single LC Connectivity
- PXE boot
- Network Virtualization
- Data Plane Development Kit (DPDK) support
- Excellent small packet performance for network appliances and Network Functions Virtualization (NFV)
- Low profile and full-height bracket

OVERVIEW

LNG9801BF-TX/RX 10 Gigabit one-way Transmission Fiber Server Adapters are composed by Transmit network card and receive network card, connecting by one-way LC fiber patch cord. They are the most flexible and scalable Ethernet adapters to meet the demands of data center environments. Data center networks are being pushed to their limits. The escalating deployments of servers with multi-core processors and demanding applications such as High Performance Computing (HPC), database clusters, and video-on-demand are driving the need for 10 Gigabit connections. Customers require flexible and scalable I/O solutions to meet the rigorous requirements of running mission-critical applications in virtualized and unified storage environments.

SPECIFICATIONS

Controller	Intel 82599
Transmission Rate Per Port	10G
Network Standard Physical Layer Interfaces	Single LC Fiber Optic Patch Cable
Jumbo Frame Support	Up to 9.5 KB
Operating Temperature	0°C to 55 °C (32 °F to 131 °F)
Boot Option and Virtualization	VXLAN, MACinUDP, NVGRE, IPinGRE
LED Indicators	ACK Yellow and Link Green
Operating System Support	Windows Server 2003 / 2008 / 2008 R2 / 2012 / 2012 R2 / 2016 R2 Windows 7/8/8.1/10 Linux Stable Kernel version 2.6.32/3.x/4.x or later VMware ESX/ESXi 4.x/5.x/6.x or later

ORDERING INFORMATION

Model	Description
LNG9801BF-TX	PCI Express x8 10 Gigabit One-way Transmit Ethernet Server Adapter Intel 82599 Based (1*LC SM)
LNG9801BF-RX	PCI Express x8 10 Gigabit One-way Receive Ethernet Server Adapter Intel 82599 Based (1*LC SM)

LNG9804BT

PCI EXPRESS X8 QUAD PORT COPPER 10 GIGABIT ETHERNET SERVER ADAPTER (BASED ON INTEL XL710)



KEY FEATURES

- Quad Port 10GbE adapter
- PCI Express v3.0(8.0GT/s) x8 lanes
- Standard CAT 6a cabling with four RJ45 connectors
- Network Virtualization
- Data Plane Development Kit (DPDK) support
- Excellent small packet performance for network appliances and Network Functions Virtualization (NFV)
- Low profile and full-height bracket

OVERVIEW

LNG9804BT is a PCIe x8 10Gbps Quad Port Ethernet Copper Server Adapter Card based on Intel XL710 chipset, compatible with x16 lanes. The server adapter is compatible with the existing network infrastructure and it will conveniently migrate the existing 100Mb/s and 1GbE networks to 10GbE. It can also link auto-negotiation among the rate of 100Mbps, 1GbE and 10GbE, which meets the most customers' demanding of smooth transition and ease of migration to 10GbE.

The adapter has four ports, of each can fully work independently, supporting four different practical application networks while working and decrease the number of slots on the equipment. The adapter has good compatibility with its four ports can be grouped together through their own ports or other Ethernet adapter ports. It can provide multiple functions like widening access bandwidth and bandwidth access redundancy to achieve a non-stop access to the network.

SPECIFICATIONS

Controller	Intel XL710
Transmission Rate Per Port	100 Mbps/1GbE/10GbE
Network Standard Physical Layer Interfaces	10GBASE-T: 55m using CAT 6,100 m using CAT 6a 1000BASE-T/100BA5E-T: 100 m using CAT 5e, CAT 6, or CAT 6a
Jumbo Frame Support	Up to 9.5 KB
Operating Temperature	0 °C to 55 °C [32 °F to 131 °F]
Network Virtualization	VXLAN,NVGRE,Geneve,Network Service Headers (NSH),VEPA,VEB
LED Indicators	10Gbps: LINK LED green, Green ACT LED Blink 1Gbps: LINK LED Yellow, Green ACT LED Blink 100Mbps: Green ACT LED Blink
Operating System Support	Windows Server 2018 R2 / 2012 / 2012 R2 /2016 R2 Windows 7/8/8.1/10 Linux Stable Kernel version 2.6.32/3.x/4.x or later VMware ESX/ESXi 5.x/6.x or later

ORDERING INFORMATION

Model	Description
LNG9804BT	PCI Express x8 Quad Port Copper 10 Gigabit Ethernet Server Adapter Intel XL710 Based (4 * RJ45)

LNG9811BT / LNG9812BT

PCI EXPRESS X4 SINGLE DUAL PORT COPPER 10GIGABIT ETHERNET SERVER ADAPTER (BASED ON INTEL X550)



KEY FEATURES

- Single I Dual Port 10GbE adapters
- PCI Express v3.0, 8.0 GT/s, x4 lanes
- Low cost, low power, 10 GbE performance for the entire datacenter.
- Standard CAT 6a cabling with RJ45 connectors
- New generation single and dual port 10GBASE-T controller with integrated MAC and PHY
- Multiple Queues - 64 Tx and Rx Per Port
- Unified networking delivering LAN iSCSI and FCoE in one low-cost CNA
- Low profile and full-height bracket

OVERVIEW

LNG9811BT | LNG9812BT is a PCIe x4 3.0 10Gbps Single/Dual Port Ethernet Server Adapter based on Intel X550 chipset, independently developed by Shenzhen Lianrui Electronics CO., Ltd, and is compatible with PCIe x8,x16 slot. This adapter card optimizes its performance, making the system I/O no longer be the bottleneck of the network application.

The Server Adapter LNG9811BT / LNG9812BT Simplifies Migration to 10 Gigabit Ethernet (GbE), Provides iSCSI FCoE Virtualization and Flexible Port Partitioning (FPP).

SPECIFICATIONS

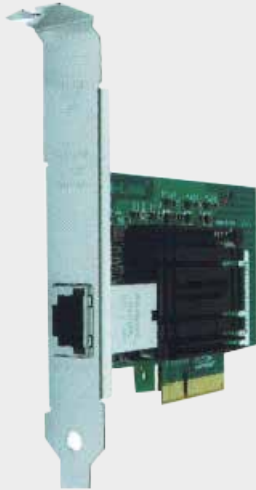
Controller	Intel X550
Transmission Rate Per Port	10GbE/1GbE/100MbE
Network Standard Physical Layer Interfaces	Cat-6A 10G up to 100m, Cat-6 10G up to 55m Cat-5E/Cat-6/Cat-6A 1G/100M up to 100m
Jumbo Frame Support	Upto 15.5 KB
Operating Temperature	0°C to 55°C (32°F to 131°F)
Virtualization Technology	VMDq, PCI-SIG SR-IOV, Intel VT-c
LED Indicators	10Gb/s: Green and Green blinking, 1Gb/s/100Mb/s: Green and Orange blinking
Operating System Support	Windows Server 2003 / 2008 / 2008 R2 / 2012 / 2012 R2 / 2016 R2 Windows 7/8/8.1/10 Linux Stable Kernel version 2.6./x/3.x/4.x or later (Red Hat Enterprise / CentOS) FreeBSD 9 /10 /11 or later VMware ESX/ESXi 5.x/6.x or later

ORDERING INFORMATION

Model	Description
LNG9811BT	PCI Express x4 Single Port Copper 10 Gigabit Ethernet Server Adapter Intel X550 Based (1 *RJ45)
LNG9812BT	PCI Express x4 Dual Port Copper 10 Gigabit Ethernet Server Adapter Intel X550 Based (2 *RJ45)

LNG6860BT

PCI EXPRESS X4 SINGLE PORT COPPER 10 GIGABIT ETHERNET SERVER ADAPTER (BASED ON TEHUTI TN4010)



KEY FEATURES

- Single Port 10GbE adapter
- PCI Express (PCIe) v2.0, 5.0 GT/s, x4 lanes
- RJ45 Connectivity
- PXE support
- Half and full-duplex support
- Virtualization (Microsoft Hyper-V) and iSCSI support
- IEEE 802.3an/ab and 10G Ethernet specification compliance
- Reduced CPU utilization and improved throughput
- Low profile and full-height bracket

OVERVIEW

LNG6860BT is a PCIe x4 10Gbps Single Port Ethernet Copper Server Adapter Card based on Tehuti TN4010B0 chipset, compatible with x8,x16 lanes. The adapter uses the master control of low power and small packaging, required by Application Servers and Workstations. The NBASE-T technology used by the master control improves the speed of the wide deployment of 10 Gigabit network on the basis of the existing gigabit network cabling, and the distance of 10 gigabit can be up to 100 meters.

This Copper Server Adapter with an integrated 10 Gigabit RJ45 connector and users can directly use the copper wire cable to connect to the scene. The adapter both performance stability and practicability, compatible with all the brand computer and the 10 Gigabit Ethernet switch, which is the deployment of high-performance 10 Gigabit Ethernet to the desktop and 10 Gigabit copper application's ideal solution.

SPECIFICATIONS

Controller	Tehuti TN4010
Transmission Rate Per Port	10Gbps
Network Standard Physical Layer Interfaces	Cat-6A:10G up to 100m Cat-6/ Cat-5e: 5G up to 100m
Jumbo Frame Support	Up to 9.5 KB
Operating Temperature	0°C to 55 °C (32 °F to 131°F)
Network Virtualization	VXLAN,NVGRE,Geneve,Network Service Headers (NSH),VEPA,VEB
LED Indicators	10Gbps: LINK Green, Green Blinking
Operating System Support	Windows Server 2008 R2 / 2012 / 2012 R2 / 2016 R2 or later Windows 7 / 8 / 8.1 / 10 or later Linux Stable Kernel version 2.6.x/3.x or later Apple macOS 10.12 or later

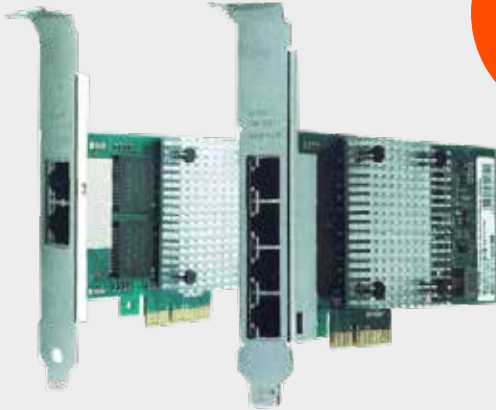
ORDERING INFORMATION

Model	Description
LNG6860BT	PCI Express x4 Single Port Copper 10 Gigabit Ethernet Server Adapter Tehuti TN4010 Based (1*RJ45)



LNG9712HT/LNG9714HT

PCI EXPRESS X4 DUAL / QUAD PORT COPPER GIGABIT ETHERNET SERVER ADAPTER (BASED ON INTEL I350)



KEY FEATURES

- Dual/Quad Port 10/100/1000Mbps adapters
- PCI Express (PCIe) v2.1(5.0GT/s) x4 lanes
- RJ45 Connectivity
- Network Virtualization
- Flexible I/O virtualization for port partitioning and QoS of up to 32 virtual ports
- Vital Product Data(VPD) Support
- Management Component Transport Protocol(MCTP)
- Low Profile and Full Height Bracket (Dual-Port)

OVERVIEW

LNG9712HT/LNG9714HT is a PCIe x4 1Gbps Dual-Port/Quad-Port Copper Server Ethernet Adapter based on Intel I350 chipset, compatible with PCIe x8 and x16 slot. The adapter is mainly used on servers and its performance has been optimized while being designed, which makes system I/O no longer be the bottleneck on the application of high-end network. The adapter can be grouped up together through its four ports to expand network bandwidth and ensure network performance. It can also real-time detect automatically and combine the communication route from the faulty port with others to achieve high-performance communications incessantly.

SPECIFICATIONS

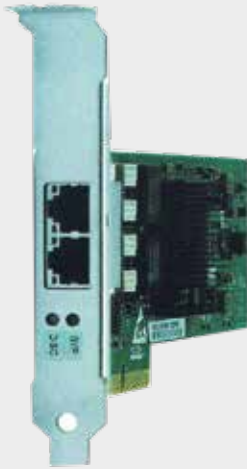
Controller	Intel I350
Transmission Rate Per Port	10/100/1000Mbps
Network Standard Physical Layer Interfaces	1000BASE-T:Cat 5e or higher up to 100m 100BASE-Tx:Cat5/5e/6 or higher up to 100m 10BASE-T: Cat3/4/5/5e/6 or higher up to 100m
Jumbo Frame Support	Upto 9 KB
Operating Temperature	0 °C to 55 °C [32 °F to 131 °F]
Boot Option and Virtualization	PXE support, Intel® VT-c
LED Indicators	1000Mbps/s: Yellow Link and Green Ack, 100Mbps/s: Green Link and Green Ack ,10Mbps/s: Not illuminate
Operating System Support	Windows Server 2003 / 2008 / 2008 R2 / 2012 / 2012 R2 / 2016 R2 Windows 7/8/8.1/10 Linux Stable Kernel version 2.6./x/3.x/4.x or later (Red Hat Enterprise / CentOS) FreeBSD 9 / 10 / 11 or later VMware ESX/ESXi 5.x/6.x or later

ORDERING INFORMATION

Model	Description
LNG9712HT	PCI Express x4 Dual Port Copper Gigabit Ethernet Server Adapter Intel I350 Based (2*RJ45)
LNG9714HT	PCI Express x4 Quad Port Copper Gigabit Ethernet Server Adapter Intel I350 Based (4*RJ45)

LNG9712HT-BP

PCI EXPRESS X 4 COPPER ONE GROUP BYPASS GIGABIT SERVER ETHERNET ADAPTER (BASED ON INTEL I350)



KEY FEATURES

- Dual Port 10/100/1000Mbps Bypass adapter
- PCI Express (PCIe) v2.1(5.0GT/s) x4 lanes
- RJ45 Connectivity
- PXES iSCSI boot
- Network Virtualization
- Support PCI-SIG Single-Root I/O virtualization
- Software programmable Bypass
- Support Direct Cache Access (DCA)
- Supports Vital Product Data (VPD)
- Low Profile and Full Height Bracket

OVERVIEW

LNG9712HT-BP is a PCIe x4 Gigabit Copper One Group Bypass Ethernet Adapter based on Intel I350 chipset, compatible with PCIe x8 and x16 slot.

In Normal mode, the ports are independent interfaces. In Bypass mode, all packets received from one port are transmitted to adjacent port. In Disconnect mode, the adapter simulates switch / rout cable disconnection. In Bypass mode, the connections of the Ethernet ports are disconnected from the system and switched over to the other port to create a crossed connection loop-back between the Ethernet ports. Hence, in bypass mode all packets received from one port are transmitted to the adjacent port and vice versa. This feature enables to bypass a failed system and provides maximum up time for the network. In Disconnect mode, the adapter simulates switch / router cable disconnection. In Disconnect mode, the switch / router does not detect link partner of the adapter.

SPECIFICATIONS

Controller	Intel I350
Transmission Rate Per Port	10/100/1000Mbps
Network Standard Physical Layer Interfaces	10BASE-T: Cat3/4/5/5e/6 or higher up to 100m 100BASE-Tx: Cat5/5e/6 or higher up to 100m 1000BASE-T:Cat 5e or higher up to 100m
Jumbo Frame Support	Up to 9.5 KB
Operating Temperature	0°C to 45 °C [32 °F to 113 °F]t
Boot Option and Virtualization	PXE support, Intel® VT-c
LED Indicators	100Mbps:Green LINK on;1000Mbps:Yellow LINK on Bypass:Green blink;Disconnect:Yellow blink
Operating System Support	Windows Server 2003 / 2008 /2008 R2 / 2012 /2012 R2 /2016 R2 Windows XP / Vista / 7 / 8 / 8.1 / 10 Linux Stable Kernel version 2.4.x / 2.6.x / 3.x / 4.x or later Linux SLES 9 / 10 / 11 or later VMware ESX/ESXi 4.x/5.x/6.x or later

ORDERING INFORMATION

Model	Description
LNG9712HT-BP	PCI Express x 4 Copper One Group Bypass Gigabit Server Ethernet Adapter Intel.I350 Based (2*RJ45)



FTTD ETHERNET SOLUTIONS

10 GIGABIT FTTD ETHERNET SOLUTIONS
1 GIGABIT FTTD ETHERNET SOLUTIONS
100MB FTTD ETHERNET SOLUTIONS

FIBER TO THE DESKTOP (FTTD) ETHERNET SOLUTIONS CAN MEET A VARIETY OF REQUIREMENTS FOR NETWORK UPGRADING OF DESKTOP PC, HELPING YOU TO BUILD HIGH-QUALITY, RELIABLE, AND COST-EFFECTIVE FIBER NETWORK.

APPLICATIONS:
Government,
military and other classified organizations

LNG6860AF-SFP+

PCI EXPRESS X4 SINGLE PORT SFP+ 10 GIGABIT ETHERNET SERVER ADAPTER (BASED ON TEHUTI TN4010)



KEY FEATURES

- Single Port 10GbE Adapters
- PCI Express (PCIe) v2.0, 5.0 GT/s, x4 lanes
- SFP+Connectivity
- PXE boot
- Support IEEE 802.3az Energy Efficient Ethernet
- Low profile and full-height bracket

OVERVIEW

LNG6860AF-SFP+ is a Pcle x4 2.0 10Gbps Single Port Ethernet Fiber Server Adapter based on Tehuti TN4010 Chipset, System I/O is no longer the bottleneck of network applications. Host processing technology can sub-load accelerator, release CPU resources occupied to free upmoreCPU resources to handle with other applications.

LNG6860AF-SFP+ can be used in 10Gigabit ethernet directly in 10 Gigabit network environmental, support different 10G SFP+ transceivers to long distance transmission.PCI Express dedicated input /output (I / O) bandwidth to ensure the network card to use the superior performance without taking up bus bandwidth. The Server Adapter LNG6860AF-SFP+ with performance, stability and good compatibility, it is compatible with all brands of computers and 10 Gigabit Ethernet switches,which is the deployment of high-performance 10 Gigabit Ethernet to the desktop and 10 Gigabit fiber application's ideal solution, which is the deployment of high-performance 10 Gigabit Ethernet to the desktop and 10 Gigabit fiber application's ideal solution.

SPECIFICATIONS

Controller	Tehuti TN4010
Transmission Rate Per Port	10GbE
Network Standard Physical Layer Interfaces	10GBASE-SR,10GBASE-LR, 10G SFP+ DAC,10G SFP+ AOC
Jumbo Frame Support	Up to 9.5 KB
Operating Temperature	0°C to 55 °C (32 °F to 131 °F)
LED Indicators	10Gb/s= ACK Yellow and Link Green
Operating System Support	Windows Server 2008 R2 / 2012 / 2012 R2 / 2016 R2 or later Windows 7 / 8 / 8.1 / 10 or later Linux Stable Kernel version 2.6.x/3.x or later

ORDERING INFORMATION

Model	Description
LNG6860AF-SFP+	PCI Express x4 Single Port SFP+ 10 Gigabit Ethernet Server Adapter Tehuti TN4010 Based (1 *SFP+)
LNG8510-X3ATL	10Gbps SFP+ Multi-mode Transceiver
LNG1310-10ATL	10Gbps SFP+ Single-mode Transceiver
SFP+-10G-CUxM	10G SFP+ DAC (Direct Attach Cable) 1M,3M,5M,10M
SFP+-AOC-3M	10 Gigabit Active Optical Cable Assembles 3m

LNG3210PF/LNG3210PF-SFP

USB3.0 TO 1000BASE-FX SC/SFP FIBER ETHERNET DESKTOP ADAPTER (REALTEK RTL8153 BASED)



KEY FEATURES

- USB3.0, 1GBE adapters
- Supports USB 3.0, 2.0, and 1.1
- Multimode SC or standard SFP fiber port Connectivity
- Supports IEEE 802.1Q VLAN tagging
- Aluminium shell to ensure the high performance of USB3.0 fiber NIC with specific appearance design

OVERVIEW

LNG3210PF/3210PF-SFP is a USB3.0 fiber optical adapter Realtek 8153 based, It has own patent of appearance under LONGLINE. It create a data connection between a USB port on a PC, laptop or tablet and a 1000Mbps Ethernet fiber port on a switch. Designed specifically for laptop, notebook, and tablet PCs running today's most popular operating systems and deployed in fiber-rich networking environments.

It is unique in current market due to aluminium shell to ensure the high performance of USB3.0 fiber NIC with specific appearance design, aluminium shell has the good thermal dissipation overcoming the shortage of the plastic shell to ensure the reliability and working stability.

LNG3210PF-SFP can solve the problems arising from the traditional integrated computer that fiber access can be realized only by fiber transceiver (transfer from light signal to electronic signal). By testing, under USB3.0, transmission rate will reach to the maximization of gigabit speed 1000Mbit/S.

SPECIFICATIONS

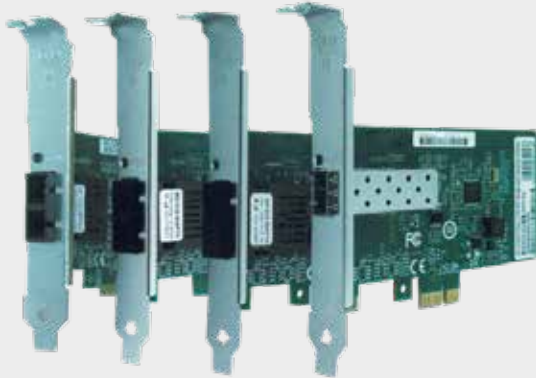
Controller	RTL8153
Transmission Rate Per Port	1Gbps
Network Standard Physical Layer Interfaces	1000BASE-SX 1000BASE-LX
Jumbo Frame Support	9K bytes
Operating Temperature	0°C to 55 °C (32 °F to 131 °F)
Compliant with	Microsoft NDIS5, NDIS6 (IPv4, IPv6, TCP, UDP) Checksum features, IEEE 802 IP Layer 2 priority encoding, IEEE 802.1Q Virtual bridged Local Area Network (VLAN)
LED Indicators	1000Mbps/s: Yellow Link and Green Ack, 100Mbps/s: Green Link and Green Ack, 10Mbps/s: Not illuminate
Operating System Support	Windows Server 2008 / 2008 R2 / 2012 / 2012 R2 / 2016 R2 Windows XP / Vista / 7 / 8 / 8.1/10 Linux Stable Kernel version 2.6.x / 3.x / 4.x or later MAC OS 10.6 upto 10.13

ORDERING INFORMATION

Model	Description
LNG3210PF	USB3.0 to 1000Base-SX SC Fiber Ethernet Desktop Adapter Realtek RTL8153 Based (1*SC MM)
LNG3210PF-SFP	USB3.0 to 1000Base-SX/LX SFP Ethernet Desktop Adapter Realtek RTL8153 Based (1*SFP)
LNG8512-X5ATL	1.25Gbps SFP Multi-Mode Transceiver
LNG1312-20ATL	1.25Gbps SFP Single-Mode Transceiver

LNG6230PF/ LNG6230PF-LX /LNG6230PF-BD / LNG6230PF-SFP/6230PF-LC

PCI EXPRESS X1 SINGLE PORT GIGABIT ETHERNET DESKTOP ADAPTER (BASED ON INTEL I210AT)



KEY FEATURES

- Single Port 1GbE adapters
- PCI Express (PCIe) v2.1 (2.5GT/s) x1 lanes
- PXE,iSCSI boot
- Low-cost, low-power
- Data Plane Development Kit (DPDK) support
- Low profile and full-height bracket

OVERVIEW

LNG6230PF/ LNG6230PF-LX /LNG6230PF-BD /LNG6230PF-SFP/6230PF-LC is a PCIe x1 2.1 Gbps Single Port Ethernet Fiber Desktop Adapter based on Intel I210 chipset, and is compatible with PCIe x4,x8,x16 slot. System I/O is no longer the bottleneck of network applications. In the networking connections, PCI Express dedicated input /output (I / O) bandwidth to ensure the network card to use the superior performance without taking up bus bandwidth.

The Desktop Adapter has high performance, high stability, high quality and very good compatibility, compatible with all brands of computers and fiber switches. This adapter is the ideal solution for deploying high-performance fiber-to-the- desktop (FTTD) applications and network security industry.

SPECIFICATIONS

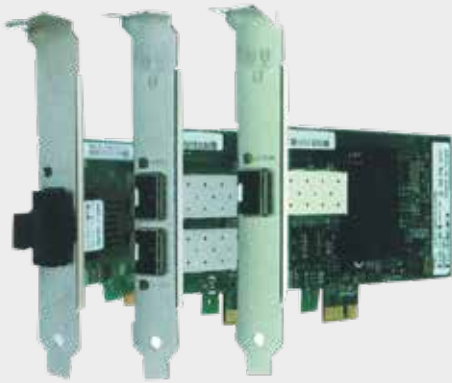
Controller	Intel I210
Transmission Rate Per Port	1GbE
Network Standard Physical Layer Interfaces	1000Base-LX 1000Base-SX
Jumbo Frame Support	Up to 9.5 KB
Operating Temperature	0°C to 55 °C [32 °F to 131 °F]
LED Indicators	Yellow Link and Green Ack
Operating System Support	Windows Server 2008 /2008 R2 / 2012 /2012 R2 /2016 R2 Windows 7/8/8.1/10 Linux Stable Kernel version 2.6.32/3.x/4.x or later VMware ESX/ESXi 5.x/6.x or later

ORDERING INFORMATION

Model	Description
LNG6230PF/LNG6230PF-LX	PCI Express x1 Single Port SC Gigabit Ethernet Desktop Adapter Intel I210 Based (1*SC MM or SM)
LNG6230PF-BD	PCI Express x1 Single Port SC Gigabit Ethernet Desktop Adapter Intel I210 Based (1*SC BIDI)
LNG6230PF-SFP	PCI Express x1 Single Port SFP Gigabit Ethernet Desktop Adapter Intel I210 Based (1*SFP)
LNG6230PF-LC	PCI Express x1 Single Port LC Gigabit Ethernet Desktop Adapter Intel I210 Based (1* LC)
LNG8512-X5ATL	1.25Gbps SFP multi-mode Transceiver
LNG1312-20ATL	1.25Gbps SFP Single-mode Transceiver

LNG9250PF/9250PF-LX/9250PF-SFP/LNG9252PF-2SFP

PCI EXPRESS X1 SINGLE/DUAL PORT GIGABIT ETHERNET DESKTOP ADAPTER (BASED ON INTEL I350)



KEY FEATURES

- Single/Dual Port 1000Mbps adapter
- PCI Express (PCIe) v2.1,(5.0GT/s), xl lane
- SC/SFP/LC Connectivity
- Preboot Execution Environment (PXE)
- Support PCI-SIG SR-IOV
- Support Jumbo Frame up to 9KB
- Flexible I/O virtualization and QoS of virtual ports
- IEEE 802.1q VLAN support with VLAN tag insertion
- Low profile and full-height bracket

OVERVIEW

LNG9250PF/9250PF-LX/9250PF-SFP/9252PF-2SFP are a PCIe xl 1Gbps Single-Port/Dual-Port Ethernet Fiber Desktop Adapter based on Intel I350 chipset. It is compatible with PCIe x4, x8 and xl6 slot. Built with the bridgeless Intel® Ethernet Controller I350, these adapters represent the next step in the Gigabit Ethernet (GbE) networking evolution for the enterprise and data center by introducing new levels of performance through industry-leading enhancements for both virtualized and iSCSI Unified Networking environments. This new family of adapters also includes new power management technologies such as Energy Efficient Ethernet (EEE) and DMA Coalescing (DMAC).

SPECIFICATIONS

Controller	Intel I350
Transmission Rate Per Port	1000Mbps
Network Standard Physical Layer Interfaces	1000BASE-SX 1000BASE-LX
Jumbo Frame Support	Up to 9.5 KB
Operating Temperature	0 °C to 55 °C [32 °F to 131 °F]
Boot Option and Virtualization	PXE support, Intel® VT-c
LED Indicators	Link/Activity LED: Off = No Link; On = Link; Blinking = Activity
Operating System Support	Windows Server 2003 / 2008 /2008 R2 / 2012 /2012 R2 /2016 R2 Windows XP / Vista / 7 / 8 / 8.1 / 10 Linux Stable Kernel version 2.4.x / 2.6.x / 3.x / 4.x or later Linux SLES 10 / 11 or later VMware ESX/ESXi 4.x/5.x/6.x or later

ORDERING INFORMATION

Model	Description
LNG9250PF/9250PF-LX	PCI Express xl Single-Port SC Gigabit Ethernet Desktop Adapter Intel I350 Based (1* SC MM or SM)
LNG9250PF-SFP	PCI Express xl Single-Port SFP Gigabit Ethernet Desktop Adapter Intel I350 Based (1 * SFP)
LNG9252PF-2SFP	PCI Express xl Dual-Port SFP Gigabit Ethernet Desktop Adapter Intel I350 Based (2 * SFP)
LNG8512-X5ATL	1.25Gbps SFP Multi-mode Transceiver
LNG1312-20ATL	1.25Gbps Single-Mode Transceiver
LNG1315-20ATLB	1.25Gbps Bi-Di Single-Mode Transceiver, TX1310nm/RX1550nm
LNG1513-20ATLB	1.25Gbps Bi-Di Single-Mode Transceiver, TX1550nm/RX1310nm

LNG9260PF/9260PF-LX/9260PF-BD/9260PF-SFP/9260PF-LC

PCI EXPRESS X1 SINGLE PORT GIGABIT ETHERNET DESKTOP ADAPTER (BASED ON INTEL 82576)



KEY FEATURES

- Single Port 1000Mbps adapter
- PCI Express (PCIe) 2.0 (2.5GT/s) xl lane
- SC/SFP/LC Connectivity
- Network Virtualization
- Improves performance and hroughput by reducing the I/O overhead due to the software virtualization layer
- Data Plane Development Kit (DPDK) support
- Simple Network Management Protocol (SNMP) and Remote Network Monitoring (RMON) statistic counters
- Low profile and full-height Bracket

OVERVIEW

LNG9260PF/PF-LX/PF-BD/PF-SFP is a PCIe xl 1Gbps Single-Port Ethernet Fiber Desktop Adapter based on Intel 82576 chipset, It is compatible with PCIe x8 and xl6 slot and low-profile PCI Express slots.

The adapter performance has been optimized while being designed to make system I/O no longer the bottleneck of network application. It can be grouped up together by other adapters to achieve fault tolerance as well as combine the communicating routing from the faulted port with others in the same group to guarantee its non-stop network communications. The Fiber Network Adapter with excellent noise immunity is applicable for Gigabit Ethernet Network. Its power supply has been changed into American TI high-efficiency supply management controller with low heat release, high efficiency and high stability.

SPECIFICATIONS

Controller	Intel 82576
Transmission Rate Per Port	1000Mbps
Network Standard Physical Layer Interfaces	1000BASE-SX 1000BASE-LX
Jumbo Frame Support	Up to 9.5 KB
Operating Temperature	0°Cto 55 °C (32 °F to 131 °F)
Network Virtualization	VMDq,PC-SIG SR-IOV,VLAN
LED Indicators	Link Green constant, ATC Yellow blink
Operating System Support	Windows Server 2003 / 2008 /2008 R2 / 2012 /2012 R2 /2016 R2 Windows XP / Vista / 7 / 8 / 8.1 / 10 Linux Stable Kernel version 2.4.x / 2.6.x / 3.x / 4.x or later Linux SLES 9/10/11 or later VMware ESX/ESXi 4.x/5.x/6.x or later

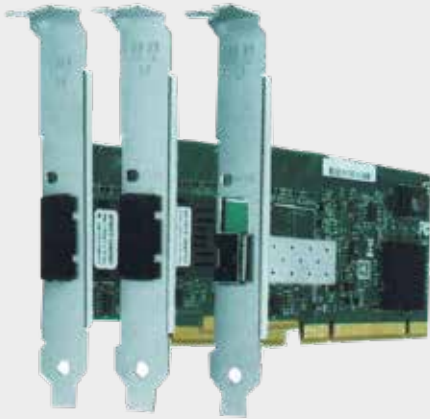
ORDERING INFORMATION

Model	Description
LNG9260PF/9260PF-LX	PCI Express xl Single Port SC Gigabit Ethernet Desktop Adapter Intel 82576 Based (1*SC SM/MM)
LNG9260PF-BD	PCI Express xl Single Port BIDI Gigabit Ethernet Desktop Adapter Intel 82576 Based (1*SC BIDI)
LNG9260PF-SFP	PCI Express xl Single Port SFP Gigabit Ethernet Desktop Adapter Intel 82576 Based (1*SFP)
LNG9260PF-LC	PCI Express xl Single Port LC Gigabit Ethernet Desktop Adapter Intel 82576 Based (1*LC)
LNG8512-X5ATL	1.25Gbps SFP multi-mode Transceiver
LNG1312-20ATL	1.25Gbps SFP Single-mode Transceiver
LNG1315-20ATLB	1.25Gbps Bi-Di Single-Mode Transceiver, TX1310nm/RX1550nm
LNG1513-20ATLB	1.25Gbps Bi-Di Single-Mode Transceiver, TX1550nm/RX1310nm



LNG7210PF-SC/7210PF-SC-LX/7210PF-LC/7210PF-SFP/7210PF-BD

PCI 32BIT SINGLE PORT GIGABIT ETHERNET DESKTOP ADAPTER (BASED ON INTEL 82545)



KEY FEATURES

- Single Port 1000Mbps adapter
- 32bit PCI 2.2 Bus-Master Interface
- SC/SFP/ LC Connectivity
- PXE 2.0
- Network Virtualization
- Alleviate server bottlenecks while increasing uptime through advanced server features
- Widespread Compatibility
- Adaptive Load Balancing
- Bracket: Low Profile and Full Height

OVERVIEW

LNG7210PF-SC/SFP/BD is a PCI 2.2 1Gbps Single-Port Ethernet Fiber Desktop Adapter based on Intel 82545 chipset, independently developed by LONGLINE. While its SFP Fiber NIC with PCI 32-bit is the first card developed to meet the market demand of FTTD, which can support all kinds and brands of SFP module with the long distance transmission of 120 Km. The adapter has already got good review for its good quality, outstanding performance and predominant compatibility. It is widely used in places like government bodies, enterprises, campus, financial areas and Internet Bars. It can be considered as a cost-effective FTTD intervention solution.

SPECIFICATIONS

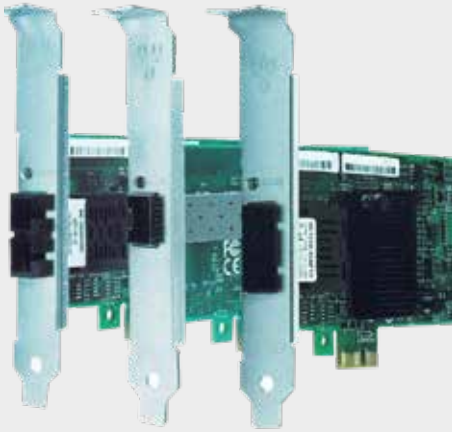
Controller	Intel 82545
Transmission Rate Per Port	1000Mbps
Network Standard Physical Layer Interfaces	1000BASE-SX 1000BASE-LX
Jumbo Frame Support	Up to 9.5 KB
Operating Temperature	0 °C to 55 °C (32 °F to 131 °F)
Network Virtualization	VXLAN, MACinUDP, NVGRE, IPinGRE
LED Indicators	1000Mbps/s: Yellow LINK/ACT blinking
Operating System Support	Windows Server 2003 / 2008 /2008 R2 / 2012 /2012 R2 /2016 R2 Windows 2000 / XP / Vista / 7 / 8 / 8.1 / 10 Linux Stable Kernel version 2.4.x / 2.6.x / 3.x / 4.x or later FreeBSD 4.x /5.x /6.x or later Novell Netware 4.x / 5.x / 6.x or later VMware ESX/ESXi 4.x/5.x/6.x or later

ORDERING INFORMATION

Model	Description
LNG7210PF-SC/7210PF-SC-LX	PCI Express xl Single-Port SC Gigabit Ethernet Desktop Adapter Intel 82545 Based (1* SC MM or SM)
LNG7210PF-SFP	PCI 32bit Single Port SC Gigabit Ethernet Desktop Adapter Intel 82545 Based (1* SC MM or SM)
LNG7210PF-LC	PCI 32bit Single Port LC Gigabit Ethernet Desktop Adapter Intel 82545 Based (1* LC)
LNG7210PF-BD	PCI 32bit Single Port SC Gigabit Ethernet Desktop Adapter Intel 82545 Based (1* SC BIDI)
LNG8512-X5ATL	1.25Gbps SFP Multi-mode Transceiver
LNG1312-20ATL	1.25Gbps SFP Single-mode Transceiver
LNG1315-20ATLB	1.25Gbps Bi-Di Single-Mode Transceiver, TX1310nm/RX1550nm
LNG1513-20ATLB	1.25Gbps Bi-Di Single-Mode Transceiver, TX1550nm/RX1310nm

LNG9030PF/LNG9030PF-SFP/LNG9030PF-BD

PCI EXPRESS X1 SINGLE PORT 100M FAST ETHERNET DESKTOP ADAPTER (BASED ON INTEL 82574)



KEY FEATURES

- Single Port 100Mbps adapter
- PCI Express (PCIe) 1.1 (2.5GT/s) xl lane
- SC/SFP/LC Connectivity
- Receive Side Scaling (RSS) with two hardware receive queues
- Low-cost, low-power
- Support PXE
- MSX, MSI-X support
- VLAN support compliant with the 802.1Q Specification
- Low Profile and full-height bracket

OVERVIEW

LNG9030PF/LNG9030PF-SFP/LNG9030PF-BD is PCI Express xl 100M fiber Fast Ethernet network adapter. It achieves fault tolerance and widens bandwidth by assembling bundles to route traffic from failed ports to other members in the same group for uninterrupted network communication.

This adapter is based on the Intel 82574 chip with integrated hardware acceleration capabilities, can perform TCP / UDP / IP checksum offloading and TCP segmentation tasks, can significantly reduce CPU utilization, release CPU resources.

LNG9030PF-BD uses Tx1310nm/Rx1550nm wavelength, 20KM module, the longest transmission distance can reach 20KM, the other end needs to use Tx1550nm/Rx1310nm wavelength, 20KM equipment.

SPECIFICATIONS

Controller	Intel 82574
Transmission Rate Per Port	100Mbps
Network Standard Physical Layer Interfaces	100BASE-SX 100BASE-LX
Jumbo Frame Support	Up to 9 KB
Operating Temperature	0°C to 55 °C (32 °F to 131 °F)
Network Virtualization	VXLAN, MACinUDP, NVGRE, IPinGRE
LED Indicators	Link/ACT:Green Blinking
Operating System Support	Windows XP / Vista / 7 / 8/8.1/10 Windows Server 2003 / 2008 / 2008 R2 / 2012 / 2012R2 / 2016 R2 Linux Stable Kernel version 2.4.x / 2.6.x / 3.x/4.x or later FreeBSD 4.x /5.x /6.x or later Novell Netware 4.x / 5.x / 6.x or later VMware ESX/ESXi 4.x/5.x/6.x or later

ORDERING INFORMATION

Model	Description
LNG9030PF/LNG9030PF-LX	PCI Express xl Single Port SC 100M Fast Ethernet Desktop Adapter Intel 82574 Based (1*SC MM)
LNG9030PF-BIDI	PCI Express xl Single Port BIDI 100M Fast Ethernet Desktop Adapter Intel 82574 Based (1*SC BIDI)
LNG9030PF-SFP	PCI Express xl Single Port SFP 100M Fast Ethernet Desktop Adapter Intel 82574 Based (1*SFP)
LNG1315-02ATL	155Mbps Multi-Mode Transceiver
LNG1315-20ATL	155Mbps Single-Mode Transceiver
LNG1315-20ATLB	155Mbps Bi-Di Single-Mode Transceiver, TX1310nm/RX1550nm
LNG1515-20ATLB	155Mbps Bi-Di Single-Mode Transceiver, TX1550nm/RX1310nm



LNG9020PF/9020PF-ST/LNG9020PF-SFP/ LNG9020PF-BD

PCI EXPRESS X1 SINGLE PORT 100BASE-FX ETHERNET DESKTOP ADAPTER (BASED ON REALTEK RTL8105)



KEY FEATURES

- Single Port 100Mbps adapters
- PCI Express (PCIe) v1.1, [2.5 GT/s] x1 lanes
- SC/SFP/LC Connectivity
- PXE Support
- Supports IEEE 802.1Q VLAN tagging
- Supports quad core Receive-Side Scaling (RSS)
- Low profile and full-height bracket

OVERVIEW

LNG9020PF/9020PF-LX/9020PF-ST/LNG9020PF-SFP/LNG9020PF-BD is 100Mbps PCIe fiber optic NIC card, it is ideal for government, education or other networks with high security requirements, Designed for fiber-to-desktop networks that need secure and reliable systems. Users can select the optical interface parameters (including connectors, single-mode/multi-mode fiber, working distance, etc) according to occasion. It provides up to 200Mbps full-duplex bandwidth capacity to support high-end systems.

The PCI-Express (PCIe) design gives you the maximum possible bandwidth and bus efficiency, along with low power consumption.

SPECIFICATIONS

Controller	RTL8105
Transmission Rate Per Port	100Mbps
Network Standard Physical Layer Interfaces	100BASE-SX 100BASE-LX
Operating Temperature	0°C to 55 °C [32 °F to 131 °F]
LED Indicators	Link/ACT Green Blinking
Operating System Support	Windows Server 2003 / 2008 / 2008 R2 / 2012 / 2012 R2 / 2016 R2 Windows XP / Vista / 7 / 8 / 8.1 / 10 Linux Stable Kernel version 2.6.x / 3.x / 4.x or later MAC OS 10.4 up to 10.6 FreeBSD 7.x / 8.0 or later

ORDERING INFORMATION

Model	Description
LNG9020PF/9020PF-LX	PCI Express x1 Single Port SC 100Base-FX Ethernet Desktop Adapter Realtek RTL8105 based (1*SCSM/MM)
LNG9020PF-ST	PCI Express x1 Single Port ST 100Base-FX Ethernet Desktop Adapter Realtek RTL8105 based (1*ST MM)
LNG9020PF-B1DI	PCI Express x1 Single Port SC BIDI 100MBase-FX Ethernet Desktop Adapter Realtek RTL8105 based (1*BIDI SCSM)
LNG9020PF-SFP	PCI Express x1 Single Port SFP 100MBase-FX Ethernet Desktop Adapter Realtek RTL8105 based (1*SFP)
LNG9020PF-LC	PCI Express x1 Single Port LC 100MBase-FX Ethernet Desktop Adapter Realtek RTL8105 based (1* LC SFP SM modules including)

LNG9042PF-2SFP

PCI EXPRESS X1 DUAL PORT 100BASE-FX ETHERNET DESKTOP ADAPTER (BASED ON INTEL 82580)



KEY FEATURES

- Dual Port 100Base-FX Adapter
- PCI Express (PCIe) v2.1,(5 GT/s) x1 lanes
- SFP Connectivity
- PXE boot
- Network Virtualization
- Data Plane Development Kit (DPDK) support
- 8 TX and 8 RX queue per port
- Low profile and full-height bracket

OVERVIEW

LNG9042PF-2SFP is widely applied on various occasions of FTTD, setting up optical fiber LAN network, optical fiber connection, not subject to electromagnetic interference and against lightning. The adapter with high data security, high reliability, stability and compatibility, has been widely used in the secret industries.

The adapter supports such as MSI-X and Low Latency Interrupts that help accelerate data across the multi-core platform, improving APP response times. The I/O technologies on multi-core platform make use of the multiple queues and multiple interrupt vectors available on the controller. These queues and interrupt vectors help in load balancing the data and interrupts amongst themselves in order to lower the load on the processors and improve overall system performance.

SPECIFICATIONS

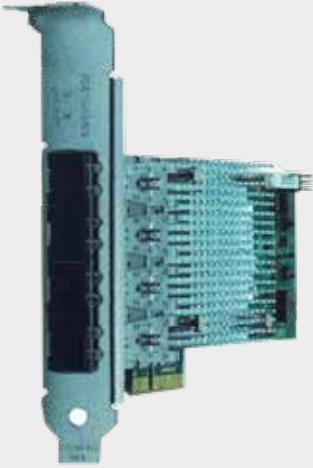
Controller	Intel 82580
Transmission Rate Per Port	100Mbps
Network Standard Physical Layer Interfaces	100BASE-SX 100BASE-LX
Jumbo Frame Support	Up to 9 KB
Operating Temperature	0 °C to 55 °C [32 °F to 131 °F]
Boot Option and Virtualization	PXE support, Intel® VT-c
LED Indicators	Link/ACT Green Blinking
Operating System Support	Windows Server 2003 / 2008 /2008 R2 / 2012 /2012 R2 /2016 R2 Windows XP / Vista / 7 / 8 / 8.1 / 10 Linux Stable Kernel version 2.4.x / 2.6.x / 3.x / 4.x or later Linux SLES 9 / 10 / 11 or later VMware ESX/ESXi 4.x/5.x/6.x or later

ORDERING INFORMATION

Model	Description
LNG9042PF-2SFP	PCI Express x1 Dual Port SFP 100Base-FX Ethernet Desktop Adapter Intel 82580 Based (2*SFP)
LNG1315-02ATL	155Mbps Multi-Mode Transceiver
LNG1315-20ATL	155Mbps Single-Mode Transceiver

LNG9054PF-4SFP

PCI-EXPRESS X4 QUAD PORT 100BASE-FX ETHERNET DESKTOP ADAPTER (BASED ON INTEL I350)



KEY FEATURES

- Quad Port 100Base-FX Adapter
- PCI Express (PCIe) v2.1, (5 GT/s) x4 lanes
- SFP LC Connectivity
- Preboot Execution Environment (PXE)
- Support PCI-SIG SR-IOV
- Support Jumbo Frame up to 9.5KB
- Flexible I/O virtualization and QoS of 32 virtual ports
- IEEE 802.1q VLAN support with VLAN tag insertion
- Low profile and full-height bracket

OVERVIEW

LNG9054PF-4SFP is PCIe xl 100Base-FX Quad Port SFP Fiber Desktop Adapter, includes Intel Virtualization Technology for connectivity to deliver I/O virtualization and Quality of Service features designed directly into the controller on the adapter. I/O virtualization advances network connectivity by providing Flexible Port Partitioning (FPP), multiple Rx/Tx queues, and on- controller QoS functionality that can be used in both virtual and non-virtual server deployments. By taking advantage of the PCI-SIG SR-IOV specification, the adapter enable Flexible Port Partitioning (FPP). With FPP, virtual controllers can be used by the Linux host directly and/or assigned to virtual machines. With this port partitioning, administrators can create up to eight dedicated connections on a single Ethernet port for use in bare metal and virtualized server deployments.

SPECIFICATIONS

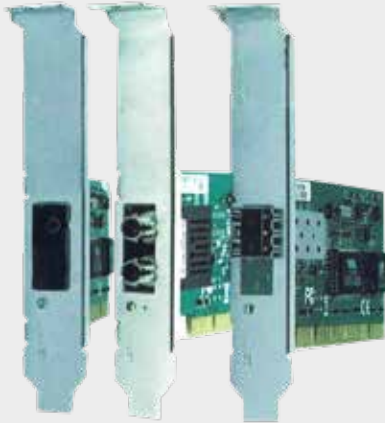
Controller	Intel I350
Transmission Rate Per Port	100Mbps
Network Standard Physical Layer Interfaces	100BASE-SX 100BASE-LX
Jumbo Frame Support	Up to 9.5 KB
Operating Temperature	0°C to 55 °C (32 °F to 131 °F)
Boot Option and Virtualization	PXE support, Intel® VT-c
LED Indicators	Link/ACT Green Blinking
Operating System Support	Windows Server 2003 / 2008 /2008 R2 / 2012 /2012 R2 /2016 R2 Windows XP / Vista / 7 / 8 / 8.1 / 10 Linux Stable Kernel version 2.4.x / 2.6.x / 3.x / 4.x or later VMware ESX/ESXi 4.x/5.x/6.x or later

ORDERING INFORMATION

Model	Description
LNG9054PF-4SFP	PCI-Express x4 Quad Port SFP 100Base-FX Ethernet Desktop Adapter Intel I350 Based (4* SFP)
LNG1315-02ATL	155Mbps Multi-Mode Transceiver
LNG1315-20ATL	155Mbps Single-Mode Transceiver

LNG7020PF/7020PF-LX /7020PF-ST/ 7020PF-SFP/7020PF-LC/ 7020PF-BD

PCI 32BIT SINGLE-PORT 100BASE-FX ETHERNET DESKTOP ADAPTER (BASED ON VIA VT6105)



KEY FEATURES

- Single Port 100Mbps Adapters
- 32bit PCI 2.2 Bus-Master Interface
- PXE 2.1 Boot
- Maximum 8 priority queues by drivers programmable
- Full duplex or half-duplex, reach 200Mbps in full duplex
- 802.1q Multiple VLAN support
- VLAN long frames support (1518+4bytes)
- Low profile and full height bracket

OVERVIEW

LNG7020PF/7020PF-LX/7020PF-ST/7020PF-SFP/7020PF-LC/7020PF-BD are a PCI 2.2 100Mbps Single Port Ethernet Fiber Desktop Adapter based on VT6105 Chipset. This optical fiber Ethernet adapter is widely applied on various occasions of FiberToThe Desktop(FTTP).

The Adapter with high data security, high reliability, stability and compatibility, has been widely used in the secret industries, such as prosecution, courts, police and military industrial enterprises etc. It can completely replace the Ethernet card external photoelectric conversion of the network structure of the commonly used RJ-45, to provide users with reliable fiber-to-the-home and fiber-to-the-desktop solutions. Users can select the optical interface parameters (including connectors, single / multi-mode fiber, working distance) according to the distance.

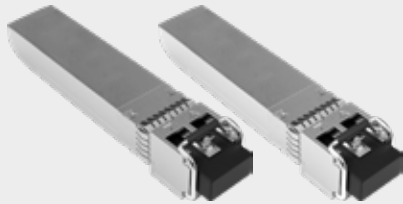
SPECIFICATIONS

Controller	VIA VT6105
Transmission Rate Per Port	100Mbps
Network Standard Physical Layer Interfaces	100BASE-SX 100BASE-LX
Operating Temperature	0°C to 55 °C (32 °F to 131 °F)
LED Indicators	Link/Activity LED: off = No Link; on = Link; Blinking = Activity
Operating System Support	Windows XP / Vista / 7 / 8 / 8.1 /10 Windows Server 2003 / 2008 R2 / 2012 R2 / 2016 R2 Linux Stable kernel version 2.4.x / 2.6.x / 3.x / 4.x or later FreeBSD versions 4.x / 5.x / 6.x / 7.x or later VMware ESX/ESXi 4.x/5.x/6.x or later

ORDERING INFORMATION

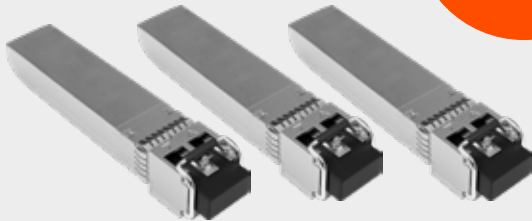
Model	Description
LNG7020PF/7020PF-LX	PCI 32bit Single-Port SC 100Base-FX Ethernet Desktop Adapter VIA VT6105 Based (1 * SC MM or SM)
LNG7020PF-ST	PCI 32bit Single-Port ST 100Base-FX Port Ethernet Desktop Adapter VIA VT6105 Based (1* ST)
LNG7020PF-BD	PCI 32bit Single-Port SC 100Base-FX Ethernet Desktop Adapter VIA VT6105 Based (1* SC BIDI)
LNG7020PF-SFP	PCI 32bit Single-Port SFP 100Base-FX Ethernet Desktop Adapter VIA VT6105 Based (1* SFP)
LNG7020PF-LC	PCI 32bit Single-Port LC 100Base-FX Ethernet Desktop Adapter VIA VT6105 Based (1 * LC MM module included)

10G SFP+ TRANSCEIVER MODULE



KEY FEATURES

- Single +3.3V Power Supply
- Compliant with SFP+ MSA
- Compliant to IEEE 802.3ae 10GBASE-SR/SW
- SFF-8472 Digital Diagnostic Function
- AC/AC Coupling according to MSA
- Class 1 Laser International Safety Standard IEC 825 Compliant. Complies with EN60825-1 and FDA 21 CFR 1040.10 and 1040.11
- Commercial Operation Temp.: 0 oC to +70 oC
- Industrial Operation Temp.: -40 oC to +85 oC
- RoHS Compliant



KEY FEATURES

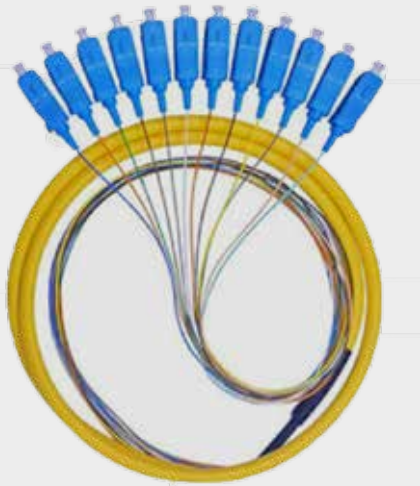
- Single + 3.3V power supply
- Small Form Factor Pluggable MSA Compliant
- Compliant with SFF-8472 MSA Digital Diagnostic Monitor (DDM), Internal Calibration. [SI Series] -Class 1 Laser International Safety Standard IEC825 Compliant. Complies with EN60825-1 and FDA 21 CFR 1040.10 and 1040.11
- Commercial Operation Temp.: 0 oC to +70 oC
- Industrial Operation Temp.: -40 oC to +85 oC
- RoHS Compliant

ORDERING INFORMATION

Model	Description
LRXP8510-X3ATL	SFP+ Duplex 10Gbps Multi-Mode Transceiver Module, 850nm, Up to 300M link length
LRXP1310-10ATL	SFP+ Duplex 10Gbps Single-Mode Transceiver Module, 1310nm, Up to 10KM link length
LNG8512-X5ATL	SFP Duplex 1.25Gbps Multi-Mode Transceiver Module, 850nm, Up to 550M link length
LNG1312-20ATL	SFP Duplex 1.25Gbps Single-Mode Transceiver Module, 1310nm, Up to 20KM link length
LNG1315-20ATLB	SFP Bi-Di 1.25Gbps Single-Mode Transceiver Module, TX1310nm/RX1550nm, Up to 20KM link length
LNG1513-20ATLB	SFP Bi-Di 1.25Gbps Single-Mode Transceiver Module, TX1550nm/RX1310nm, Up to 20KM link length
LNG1315-02ATL	SFP Duplex 155Mbps Multi-Mode Transceiver Module, 1310nm, Up to 2KM link length
LNG1315-20ATL	SFP Duplex 155Mbps Single-Mode Transceiver Module, 1310nm, Up to 20KM link length
LNG1315-20ATLB	SFP Bi-Di 155Mbps Single-Mode Transceiver Module, TX1310nm/RX1550nm, Up to 20KM link length
LNG1515-20ATLB	SFP Bi-Di 155Mbps Single-Mode Transceiver Module, TX1550nm/RX1310nm, Up to 20KM link length

PS: All details in this brochure is just for your reference.

12 CORE PIGTAIL WITH SC-UPC SM 5M LNG LSZH FAN OUT 100CM



KEY FEATURES

- 12 core pigtail with SC/UPC MM 5m long LSZH fan out 100cm
- Jacket:LSZH,PVC available
- Length customized

APPLICATION

- Telecommunication System
- Testing Equipment
- CATV System
- Long-haul Telecommunication
- LAN System

FEATURES

- PC,UPC,APC polishing available
- High Return Loss
- Low Insertion Loss
- High Reliability and Stability
- Available for singlemode and simplex/duplex
- 9mm,2.0mm,3.0mm diameter cable available

Fiber Mode	SM			MM	
Connector Type	LC/SC/FC/ST/MU/MTRJ/E2000				
Diameter (mm)	[1]0.9 [1]2.0 [1]3.0				
End Face Finishing	PC	UPC	APC	PC	
Insertion Loss (db)	≤0.2		≤0.2	≤0.3	
Return Loss (db)	≥50	≥55	≥60	≥35	
Interchangeability (db)	≤0.20				
Repeatability (db)	≤0.10				
Operating Temperature (°C)	-40 ~ +75				
Storage Temperature (°C)	-40 ~ +85				
Operating Wavelength(nm)	1310,1550		1310,1550	850	



FC/UPC-FC/UPC MM DX 2.0MM LSZH 15M



KEY FEATURES

- FC/UPC-FC/UPC MM DX 2.0mm LSZH 15M
- 1.2,0,3.0mm diameter cable available
- 2.Jacket:PVC,LSZH available
- 3.Length customized

APPLICATION

- Telecommunication System
- Testing Equipment
- CATV System
- Long-haul Telecommunication
- LAN System

FEATURES

- PC,UPC,APC polishing available
- High Return Loss
- Low Insertion Loss
- High Reliability and Stability
- Available for singlemode and simplex/duplex
- 9mm,2.0mm,3.0mm diameter cable available

Fiber Mode	SM			MM
Connector Type	LC/SC/FC/ST/MU/MTRJ/E2000			
Diameter (mm)	[1]0.9 [1]2.0 [1]3.0			
End Face Finishing	PC	UPC	APC	PC
Insertion Loss (db)	≤0.2		≤0.2	≤0.3
Return Loss (db)	≥50	≥55	≥60	≥35
Interchangeability (db)	≤0.20			
Repeatability (db)	≤0.10			
Operating Temperature (°C)	-40 ~ +75			
Storage Temperature (°C)	-40 ~ +85			
Operating Wavelength(nm)	1310,1550		1310,1550	850

