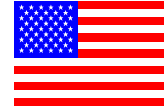




# Wildcat Clips



September 10, 2014

Dear Lake Country Families:

Welcome to the first edition of the 2014-15 Wildcat Clips, an excellent resource for parents and students to find out the happenings at LCS, as well as things to get involved in within the greater “community.”

**Com-mu-ni-ty:** *feeling of fellowship with others, as a result of sharing common attitudes, interests, and goals*

Speaking of “community,” as we know Lake Country is not a school that can claim to belong to one town or village. We come from a mix of local spots, but blend together to become a strong unified group that takes great pride in offering an environment that strives for high achievement, open mindedness, creativity, and appreciation for arts and outdoors.

Thanks to our incredible staff, it is thrilling be a part of a school that embodies what it means to be a community. Our hope is that Lake Country is a place where all feel welcome, individuals are celebrated, and people work together for the betterment of all.

We invite you all to stop in the office any time just to say hi, ask questions, and be involved. We want and need your honest input in order to make sound, long-term decisions that help all students grow and make Lake Country the wonderful district it is. Not all decisions will be popular, but our goal is to maintain Lake Country’s vision and continue to push our students and staff toward sustainable excellence.

We’re already off to a wonderful school year. We look forward to a great year of fun experiences for your entire family.

Sincerely,

Mark Lichte and Stacy Yearling  
Lake Country School Administrators



### **PICTURE RETAKE DAY**

Picture retake day is scheduled for Tuesday, 9/23/14. Any student who did not have their picture taken at registration OR is not satisfied with their original package can have pictures taken on September 23. If you are having your picture taken for the first time, please be sure to present your order form to the photographer. You can find your order form in the blue registration folder that you received previously. We have limited extras in the office. If you are having a retake, you **MUST** give the photographer your original photo package. Every student should be photographed whether or not they are purchasing a package so that they are included in the class composite and the yearbook. Students should present the order form to the photographer on Picture Day.

### **HEALTH ROOM**

#### **VACCINATION REMINDER:**

LCS will be sending out letters issued by the state in late September for students with **NO RECORD, BEHIND SCHEDULE** or **IN PROCESS** with their child/children's immunizations. Please get the records to the school health room as quickly as possible. Thank you for your prompt attention.

#### **MEDICATIONS:**

Each new school year if you would like your child to have Tylenol, ibuprofen, for pain control or any other medication such as cough medicine, etc you must fill out a medication form, sign it and return it, with the medication, to the health room. A copy of this form can be found on the school website or hard copies are available in the office. I am very happy to dispense this medication to your child, but I do need the medication sheet to legally do it. Medications are to be picked up at the end of each school year, but we have a number of medications that were not. If you would like these to be used for this school year we need to have a new form signed and dated in order for us to legally dispense it. If you are unsure what you may or may not have here, feel free to call and we can check for you. Thank you so much, Lura Jennings, health room assistant.

#### **CLOTHES DONATIONS:**

The health room is in need of extra clothes for students. We are looking for mainly pants, boys and girls in sizes ranging from 6 -10. Leggings, sweat pants and sports shorts work best for multiple sizes.

### **FIRST LEGO LEAGUE**

Congratulations to our three FIRST Lego League (FLL) teams who have earned grants to support their problem solving work!

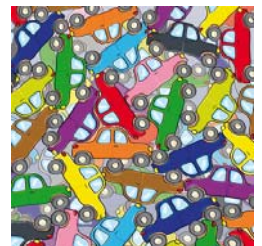
Thank you to Mrs. Kelly Kowalewski who helped secure two grants from the John Deere Corporation. These grants, totaling more than \$1500, cover the cost of the team's national registration, Lego League field setup kit and two of the new generation EV3 robots for use by all three of Lake Country's FLL teams.

Thank you to General Electric for providing grants to our two remaining teams. These grants, totaling more than \$700, cover the cost of national registration as well as field setup kits.

Lake Country School District appreciates the generous support of these corporations!

### **DROP-OFF/PICK-UP**

Just a reminder – There should be no cars in the bus lanes (circle drive) until after buses leave 8:00 in the morning and after 3:00 in the afternoon. If you are coming into the building to drop off or pick up, please park in the lot. And as always, please watch out for our children. There is no parking along the front curb. See map attachment in the issue of the Clips. Thank you.





## **COME JOIN TWO GREAT GROUPS AT LCS**

As with any great school, there are many groups behind the scenes promoting and supporting our children. At LCS, we have two wonderful groups: PTO and Foundation. Included is a short summary of each of the groups and their contacts:

### **PTO**

The PTO is a non-profit organization that serves LCS.

- We organize and fund social events for the students and families
- Financially support special projects in the school
- Show our appreciation to the staff

We have a budget that outlines our spending for the year and much of our fundraising goes to support those designated programs. We also support one-time purchases of needed items that enhance our children's learning environment, such as computers, Smart Boards, and playground equipment. We are proud to help support the ACE program and Engineering is Elementary (EIE) program. The PTO has donated on average over \$30,000 to various teacher requests as well yearly! Thanks. PTO contact is Danielle Henry, [danihenry@live.com](mailto:danihenry@live.com). You may also check out their information on our website under parent organizations.

### **FOUNDATION**

The Foundation was started in 2005 with an initial donation of \$25,000 from the PTO. The balance currently is \$100,000.

The Lake Country School Education Foundation (LCSEF) is a 501c3 non -profit organization that raises & invests money for LCS's long term needs. LCSEF also offers academic and music scholarships to LCS students and provides after school enrichment classes. Some of the classes include: Foundation Theatre, Robotics, Mad Science, Art, Lego Engineering, Chess Club, Yoga and Spanish. LCSEF's annual fundraiser is the Rummage sale the first weekend of October. For more information about LCSEF please see the brochure in the school office or the LCS website. We need more families with young students to get involved. If you can help LCSEF in any way, please contact Louisa Self at 646-9269 or [kevself@aol.com](mailto:kevself@aol.com)



## **ART ROOM WISH LIST**

The LCS Art Department is collecting the following supplies for students to use in their creations. Please leave items in the office labeled "ART WISH LIST" or outside the lower art room at any time. Please only leave items on the list at this time. Thank You! Mrs. Gonzalez

- |   |  |
|---|--|
| <ul style="list-style-type: none"><li>• TP tubes</li><li>• Paper Towel Tubes</li><li>• Styrofoam and Cardboard Egg Cartons</li><li>• Old CD's</li><li>• Empty Gift Cards (for cutting clay)</li><li>• Yard sticks and wooden rulers</li><li>• Plastic Wrap</li><li>• Aluminum Foil</li><li>• Wax Paper</li><li>• Elmers Blue Gel Glue</li></ul> | <ul style="list-style-type: none"><li>• Plastic Gerber Baby Food Containers with Lids</li><li>• Protractors</li><li>• small wood scraps</li><li>• large yogurt containers and other plastic containers with lids</li><li>• old/extra buttons/beads</li><li>• white bandanas - available at Walmart craft section</li><li>• cap erasers</li><li>• mint tins (altoids)</li></ul> |
|---|--|



**ARROWHEAD AREA PUBLIC SCHOOL DANCE SCHEDULE 2014-2015**



Host School	Theme	Date
Stone Bank School	Welcome Back	September 26, 2014
North Shore Middle School	Autumn	October 17, 2014
Richmond School	Fall	November 7, 2014
Merton School	Christmas	December 19, 2014
North Lake School	Winter Wonderland	January 9, 2015
Lake Country School	Valentine	February 13, 2015
Swallow School	Shamrocks	March 20, 2015
S.O.D.A (Stone Bank)	Alcohol Awareness <small>(AHS Area Leadership Camp)</small>	April 17, 2015
Sixth Grade Dance (Stone Bank)	4:30pm-6:30pm	June 5, 2015



There is a change in the Arrowhead Area Public School Dance Schedule for the 2014-2015 season.

- There will only be one dance per month.
- Each school will have the opportunity to host one dance
- The SODA dance involves ALL school districts. Monies raised support AODA Leadership Camp in the Fall
- The 6<sup>th</sup> grade dance is sponsored by S.O.D.A
- The dances are open to the 7<sup>th</sup> and 8<sup>th</sup> grade students attending the Arrowhead Area Schools.
- **Dance admission will remain at \$5.00 with valid school ID, or \$10.00 without valid ID or signed dance pass**

**“BUGSY MALONE” MUSICAL**

Congratulations to the cast of Lake Country School’s production of “Bugsy Malone”  
 The show will be November 7, 8, 9 in the LCS Cafetorium. Tickets will be available to the public beginning September 29. Watch for more info to follow!



<Cast list attached!>

**FUN RUN – See Attachment**

**CHESS CLUB – See Attachment**

**FORENCIS CLASSES – See Attachments**

**ART TO REMEMBER – See Attachment**



**BAND FUNDRAISER**

**Thank you** for attending the Open House Band Fundraiser Cookout! We raised over \$1,300 to help the band program at Lake Country School! Especially big thank you to Barb Estenson, Amber Ove, Gina Fischer, and Jim Renn for all of your hard work organizing and donating, and to all of the parents and students who donated or volunteered!



### **CUB SCOUTS**

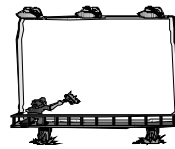
Calling all 1st - 5th grade boys!!!

Our Cub Scout Membership Kickoff Meeting and Carnival is tonight, Wednesday, Sept 10th from 6:30 to 7:30. Please come to the LCS upper gym to get information on joining the Scouts and have some fun playing games at the same time!

Please click on the following link to learn more about Scouting, see our Pack schedule for the year and more!  
[www.lcs.k12.wi.us/afterschool.html](http://www.lcs.k12.wi.us/afterschool.html)

If you have any questions, please call Cubmaster Ryan Amtmann @ [262-367-1941](tel:262-367-1941) or [414-840-3296](tel:414-840-3296).

Hope to see you there!



## COMMUNITY BULLETIN BOARD

Community groups shall indemnify and forever save harmless the Lake Country School District Board Of Education and its officers, agents and employees from any and all claims whatsoever kind, nature or description arising out of the use of any school facilities and communications. Lake Country School does not endorse these organizations.

### **Check The Community Section On Our Website For Information On The Following:**

- Arrowhead DECA's Hawkfest Friday - Sept. 19<sup>th</sup>
- AHS Warhawks Youth Cheer Camp - Sept 13<sup>th</sup>, 20<sup>th</sup> and 27<sup>th</sup>
- Lapham Peak 2014 Fright Hike - Oct. 24<sup>th</sup> & 25<sup>th</sup>
- Lapham peak Fright Hike Volunteers Needed
- Parents United – Drug Awareness - September 30<sup>th</sup>
- Parents United – Childhood Anxiety Disorders - October 8<sup>th</sup>
- Hartland's 30<sup>th</sup> Annual Business Trick Or Treat - October 23<sup>rd</sup>
- Coast Guard Auxiliary and Hartland Park & Red's Boaters Safety Class Sept 29<sup>th</sup> – Oct 27<sup>th</sup>
- Mullett Ice Center Fall 2014 Hockey & Skate Lessons
- YMCA at Pabst Farms – Middle School Programs
- YMCA at Pabst Farms – Elementary School Programs
- Delafield Public Library Programs
- Westbrook Church Upward Basketball and Cheer League
- 4H Club
- Lake Country Younglife
- Lake Country Field Hockey for Girls
- Learn How To Focus Seminar – Family Tae Kwon Do Champions – Sept. 13<sup>th</sup> and Sept. 20<sup>th</sup>

**To access: put cursor over Community Events on the gray menu bar of our website. Click on the drop-down below labeled Community Events Page. This will bring up the links for all listed above.**

**Wildcat Clips deadline: Friday, September 19th, 2014.**

Please provide your *Clips* submission request to Lisa Acton. E-mail Lisa at [actonl@mylakecountryschool.org](mailto:actonl@mylakecountryschool.org) in a Word document. We reserve the right to edit and/or limit items submitted to fit our *Clips* format. All *Clips* submissions are subject to approval by Mark Lichte.

# Your Lake Country School PTO Page




Welcome to a new school year at LCS! We are very excited to be working together to help keep it one of the best schools in the area!

## PTO MEETING

Our first general meeting will be held on Thursday, September 11<sup>th</sup> at 6:30pm in the LCS conference room. All are welcomed to attend! Two amendments to the PTO bylaws are on the agenda. The first is in regards to how often the executive board meets, as well as adding email voting procedures. The second amendment deals with removing the LCS Booster Club from the PTO bylaws as it has been a separate entity for the last two years. We hope to see you there!

## Monthly Spirit Night at Culver's in Hartland

This PTO fundraiser is held the 1<sup>st</sup> Thursday of each month from 4:30-8:30pm. Come support LCS & enjoy a delicious dinner with your family. Tell your neighbors & friends! A portion of all sales from 4:30-8:30pm is generously donated to LCS! Please mention LCS when you order at  the counter or drive-thru window. And wear your LCS Spirit wear to show *Wildcat Pride!*

## Muffins with Mom ~ Sept. 24<sup>th</sup> from 7:15-8:00am

Join us for our annual event held before the school day starts. Moms and kids enjoy muffins and other goodies while socializing with other moms and students.



Help Take **CHARGE OF EDUCATION**<sup>®</sup> with your Target Red Card!

Link your card at: [www.target.com/tcoe](http://www.target.com/tcoe)

Link your Target Red Card to LCS and then shop at Target or Target.com. 1% of what you spend will automatically come back to LCS. Family & friends can easily link their cards too! Last month Target donated \$2,192.47 back to LCS! So far, only 84 LCS families have linked their cards to LCS...let's up that number and raise more funds to help make a difference in LCS students' lives!

## Save grocery receipts from Sentry & Biggly Wiggly!

LCS earns 1% on the total amount spent at these stores!

Collect at home and turn in to your child's homeroom teacher.

## 2014-2015 PTO Board Members:

*President:* Danielle Henry  
*Vice President:* Cyndi Tomich  
*Secretary:* Jenny Berglin  
*VP Appropriations:* Gina Woida  
*VP of Fundraising:* Heather Ragen  
*VP Special Events:* Grechen Marek

## Upcoming PTO Events

- Sept. 11 PTO General Meeting from 6:30-8pm in the LCS conference room
- Sept. 17 Staff Appreciation Welcome Breakfast
- Sept. 24 Muffins with Moms from 7:15-8am in the cafetorium
- Oct. 2 Culver's Spirit Night in Hartland from 4:30-8:30pm
- Oct. 17 Family Halloween Dance from 6:30-8:30pm
- Oct. 23 Staff Appreciation Conference Dinner
- Nov. 6 Culver's Spirit Night in Hartland from 4:30-8:30pm
- Nov. 11 Donuts with Dads from 7:15-8am in the cafetorium

Get to it! Start your clipping now!



Last year, LCS earned **\$4,283** from the Box Top program. Our goal for 2014-15 is **\$5,000**.

- Clip, trim, and turn in Box Tops to your child's homeroom teacher.
- Watch for Bonus Box Top opportunities at local stores.
- Ask family, friends, and neighbors to collect Box Tops for LCS too.

"Tell me and I forget. Teach me and I remember. Involve me and I learn."

~ Benjamin Franklin

**LIKE US ON FACEBOOK!**

<https://www.facebook.com/LakeCountrySchoolPTO>

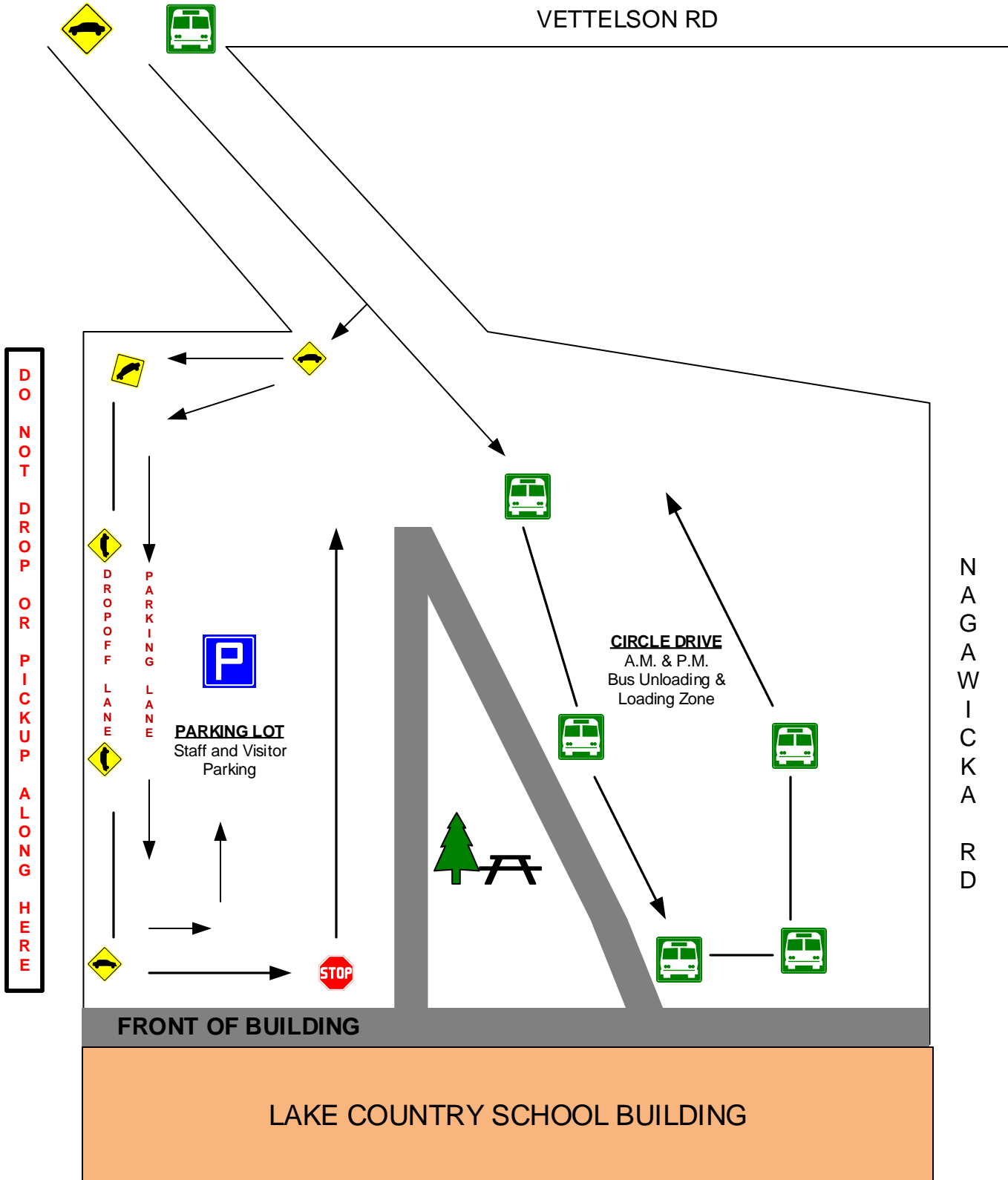


# BUGSY MALONE CAST LIST (in order of appearance)

Roxy Robinson.....Jacob Bleuel  
Bugsy Malone.....Stephen Overland  
    *Bugsy Malone understudy*.....*Bret Schmidtke*  
Bronx Charlie.....Clare Ove  
Laughing Boy.....Maile Beck  
Benny Lee.....Caroline Nunnally  
Yonkers.....Kellie Brabson  
Shoulders.....Sarah Maynor  
Violinist.....Skylar Fritsche  
Flash Frankie.....Kaya Rollins  
Barber.....Ben Brandel  
Tallulah.....Annie Estenson  
Tillie.....Olivia Glaessner  
Dotty.....Lauren Lott  
Fizzy.....Bret Schmitke  
    *Fizzy Understudy*.....*Gracey Dempsey*  
Ma Becker.....Sophie Maurer  
Blousey.....Gabby Gramz  
    *Blousey understudy*.....*Maile Beck*  
Bangles.....Taylor Tomich  
Loretta.....Celia Panther  
Velma.....Jessica Laasch  
Ethel.....Sydney DePeaux  
Bernadine.....Arianna Fischer  
Eunice.....Alena Lippold  
Doodle.....Connor Ball  
Fat Sam.....Peter Garza  
Knuckles.....Jordan Renn  
Paper Boy.....Eva Steitzer  
Radio Announcer.....Gracey Dempsey  
Snake Eyes.....Emily Kadrich  
Louis.....Mia Lipsky  
Ritzy.....Abby Tessmer  
Angelo.....Haley Oliver  
Waitress.....Mia Miller  
Dandy Dan.....Davis Nunnally  
Luella.....Isabelle Booker  
Butler/Shady.....Ellen Stietzer  
Cellist.....Amelia Ball  
Opera Singer.....Sophia Roehl  
Ventriloquist.....Lola Elahi  
Marbini.....Kaelyn Glassey  
Oscar de Velt.....Jackie Peddie  
Lena.....Lauren Trieber  
Seymour Scoop.....Katie Weston  
O'Dreary.....Elise Ove  
Captian Smolsky.....Caiti Eidson  
Leroy.....Teagan Brohman  
Cagey Joe.....Justin Stelter  
Looney Bergonzi/Big Boxer.....Anthony Vezzetti  
Pickett.....Ben Brandel  
Jo the Bar Keep.....Sarah Lunow  
Baby Face.....Will Meier

## STUDENT DROPOFF/PICKUP PROCEDURES

- Buses use circle drive entrance in A.M. & P.M.
- Parents parking cars to walk students into school use parking lot entrance
- Parents dropping off students (no parking) use parking lot entrance and need to stay to the right. Pull all the way forward to the stop sign and then proceed out.
- **NOTE: There are now two lanes of traffic once you are in the parking lot....one along the west perimeter to allow for student dropoffs and one to allow cars to pass and park.**





# Arrowhead Grade School Cross Country Run

## Friday, Sept. 26 at Arrowhead High School



**Awards:** Medals to the top 12 runners in each division - except the 5 & under ¼ mile run. Ribbons to all finishers. Trophies to the winning teams in the age 11-14 divisions.

**Sign-up:** – Your coach/teacher must email your entry in. You will need to report early for your race and pick up your race number at the table in the parking lot near the start. **Results will be done on the computer and you must have your race number with you when you report to the starting line! No race numbers are needed for the 5 & under 1/4 mile run.**

### Race Times:

5:00 Girls 5 & under ¼ mile run

5:05 Boys 5 & under ¼ mile run

(Parents may accompany their runner in the 5 & under race - this is a participation run only - there will be no medals or printed results.)

5:10 Girls 8 & under ½ mile run

5:18 Boys 8 & under ½ mile run

5:25 Girls 9-10 mile run

5:35 Boys 9-10 mile run

5:45 Girls 11-12 & 13-14 mile run

5:55 Boys 11-12 & 13-14 mile run

**Race Sponsors:** Arrowhead Cross Country teams.

**Race Course:** This will be on the same race course as past years on the northwest side of the campus. The start and finish will be near the woods by the practice soccer fields - Parking should be in the north campus east and front lots.

**Meet T - Shirts:** Meet shirts will be on sale for \$10.

Results will be made available on the Arrowhead website under boys cross country. (2013 results are on this site: [www.arrowheadschoools.org](http://www.arrowheadschoools.org) navigate to boys cross country)



Please detach and turn in by TUESDAY September 23<sup>rd</sup> if your child has permission and plans to participate in the Arrowhead Grade School Cross Country Run.

\_\_\_\_\_  
(First and Last Name of Student)

Boy / Girl  
(circle one)

\_\_\_\_\_  
(Age on day of Run)

# Attention Parents!

Our school is participating in a healthy, creative fundraiser with Art to Remember. Right now, children are busy creating colorful, fun artwork and soon you will receive a personalized order form showcasing your son's or daughter's artwork.



- Over 30 keepsake products available – all featuring your child's artwork
- Many of the products are less than \$15
- Safe, secure online ordering is available
- Satisfaction guaranteed
- Don't forget about your family and friends for these gift giving occasions:
  - Grandparent's Day
  - Christmas
  - Father's Day
  - Birthdays
  - Hanukkah
  - Mother's Day



Your purchase captures a moment in time with your child and supports your school.

## THANK YOU!



# Lake Country School Education Foundation and Chess Scholars present an Afterschool Chess Club with Professional Instruction

*Develop your child's intellect through the royal game of chess! Current research has shown a strong link between chess and academic performance in a variety of areas, including mathematics and language arts. Also, chess has been proven to enhance motivation, concentration, focus, social skills, and creativity. Open to grades K-8.*

Fall Session: 8 classes on Tuesdays, 3:15-4:15 pm.  
October 7 - November 25, 2014.



**Please like us on Facebook** <https://www.facebook.com/ChessScholars/>!

**Please visit our website at** [www.ChessScholars.com](http://www.ChessScholars.com)!

**No previous knowledge of chess is necessary.** Each class will consist of a fun interactive teaching period and guided practice time. **Both new and returning participants are welcome** and will get to the next level under the guidance of an experienced Chess Scholars coach. There will also be a chess competition with prizes and a pizza party towards the end of the session! Each child will receive a participation medal and a chess keychain.

*For further information, please contact Chess Scholars at 847-482-9999 or at [info@ChessScholars.com](mailto:info@ChessScholars.com).*

To sign up for the chess club, please fill out the form below and **MAIL IT** with an **\$85.00** payment to Chess Scholars, 2209B Lakeside Dr. Bannockburn, IL 60015 by Tue, Sep 23, 2014 (postmark date).

Please make checks payable to: **Chess Scholars.** No refunds will be made, unless there is insufficient enrollment. No confirmation will be sent. It's the parents' responsibility to remind the children about the classes. Registrations sent after 9/23 will incur a \$15 late fee and will be admitted on a space-available basis.

Name \_\_\_\_\_ Grade \_\_\_\_\_ Phone \_\_\_\_\_  
Emergency Contact Person \_\_\_\_\_ Emergency Phone \_\_\_\_\_  
Address \_\_\_\_\_  
Chess experience \_\_\_\_\_  
Email \_\_\_\_\_ First-time participant?  Yes  No

Pizza and soda will be served on the last day, as well as Pepperidge Farm Chessmen cookies on some other days. Please list any relevant allergies: \_\_\_\_\_

Dismissal Options (please circle one) 1. Parent pick-up 2. YMCA Great Escape



LAKE COUNTRY SCHOOL  
EDUCATION FOUNDATION  
pro-education • pro-children • proactive



## WE NEED YOUR DONATIONS!!

**All \$'s raised during the Rummage Sale are invested and the earnings are spent annually to provide additional school educational opportunities for your children.**



**Examples:**

- Project Lead the Way (PLTW)
- Foundation Art
- Foundation Spanish Classes
- Foundation Chess Club
- Foundation Theater
- Ace Programing
- Mad Science 5k – 5<sup>th</sup> Grade
- Music Scholarships



### Lake Country School Education Foundation's 9th Annual

## Rummage Sale

**Fri. Oct 3 & Sat. Oct. 4**

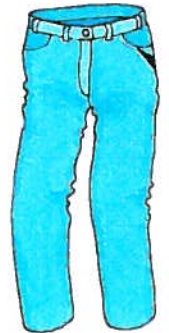
**8 am – 5 pm                      7 am – 4 pm**

**Clean out your closets and garages for fall and get your tax donation receipts early this year!!!**



### **Donation Drop Off Dates @ LCS:**

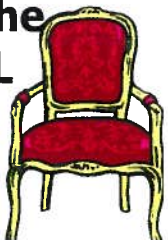
Wednesday, September 3<sup>rd</sup>, 8am - noon  
Saturday, September 6<sup>th</sup>, 9am - noon  
Saturday, September 13<sup>th</sup>, 9am - noon  
Saturday, September 20<sup>st</sup>, 9am - noon  
Saturday, September 27<sup>th</sup>, 9am - noon



Anytime during school hours from Sept. 29<sup>th</sup> - Oct 2<sup>rd</sup> in the Gym  
(Need to drop off earlier/large items, just call Kent Attwell 262-367-1982)

**WE REALLY NEED PARENT VOLUNTEERS the WEEK BEFORE the**  
**The SALE. IF YOU CAN DONATE A FEW HOURS, PLEASE CALL**

Kent Attwell, 262-367-1982 or kent.attwell@sabic-ip.com  
or Jennifer Bennett, 414-755-3410 or jajalane@yahoo.com





**SECOND ANNUAL**

# **GOLF TOURNAMENT**

**SATURDAY, MAY 30, 2015**

**REGISTRATION AT 1:00PM - SHOT-GUN START AT 2:00 PM**

Join us for a fun and social golf outing to benefit the Lake Country School Education Foundation.

The event entry fee includes 9 holes of golf at Ironwood Golf Course, hole events, raffle and silent auction along with dinner. The format is casual and we encourage golfers of all abilities to join us for a great day supporting our kids!

**Golfing & Event is \$75 per person  
Sponsorships Available**

**CONTESTS  
RAFFLES  
AUCTION  
DINNER**

**SAVE THE DATE!**



## Express Yourself! (Poetry/Spoken Word workshop)

Prepare yourself for an awesome opportunity as we explore one of the most exciting forms of the performing arts. Students in this class will explore various poetry types and have the opportunity to present those in front of peers. We will work on vocalization, diction, as well as developing a commanding presence in front of an audience. Students should prepare for a fun, fast-paced, fantastic time as we work together to help your child learn everything they need to know about writing poetry and performing it for the stage. The last class will be a presentation that we hope all parents are available to see.

**Who: Grades 6-12**

**Where:** Lake Country School

**When:** Fridays, September 19<sup>th</sup>-October 31<sup>st</sup> (6 Weeks) 3:15-4:15pm (No class 10/24)

**Why:** This is your chance to learn about poetry, one of the best art forms by a veteran in the poetry world.

**Cost :\$75/Student (Please make checks payable to "Lake Country School")**

**About the Instructor:** Dontae Hill is taking a gigantic leap in Forensics/Performing arts with over 10 years of experience as he manages to immerse himself in various entities such as:

**\*Forensics:** Leading the Lake Country Wildcats to a state championship in 2013 and coaching at KMHS

**\*Directing:** Micromanaging a variety of classes as assistant director for Carroll Academy in summer 2013

**\*Innovation:** Becoming the founder of Carroll University's Collegiate Forensics team

-----  
Name \_\_\_\_\_ Grade \_\_\_\_\_

Age \_\_\_\_\_ Parent/Guardian Names \_\_\_\_\_

Address \_\_\_\_\_

Phone \_\_\_\_\_ E-Mail \_\_\_\_\_

Special Requirements \_\_\_\_\_

I agree to let my child participate in "Express Yourself" at Lake Country School.

Parent/Guardian Signature \_\_\_\_\_



Forensics Forever

## Forensics Exploration! (Grades 3-5)

"Forensics is the art of oral interpretation-- Quite possibly the most academic of the performing arts!"

Get ready for an amazing time as we explore all of the mediums for performing in front of peers, loved ones and people you have never met in your life! We will explore Improv, Public speaking, Scene study and much more! Children of all ages should prepare for a fun, fast-paced, fantastic time as we work together to help your child learn everything they need to know about performing for the stage.

Signup now! Space is limited...

**Who:** Any student from grades 3-5

**What:** *The most awesome class ever!!*

**Where:** Lake Country School

**When:** Wednesdays, September 24th-October 29th (6 Weeks) 3:15-4:15pm

**Cost: \$75/Student (Please make checks available to "Lake Country School")**

**About the Instructor:** Dontae Hill is taking a gigantic leap in Forensics/Performing arts with over 10 years of experience as he manages to immerse himself in various entities such as:

**\*Forensics:** Leading the Lake Country Wildcats to a state championship in 2013

**\*Theatre:** Teaching Improv and Acting at some of the most esteemed venues

**\*Directing:** Micromanaging a variety of classes as assistant director for Carroll Academy in summer 2013

**\*Innovation:** Becoming the founder of Carroll University's Collegiate Forensics team

-----  
Name \_\_\_\_\_ Grade \_\_\_\_\_

Age \_\_\_\_\_ Parent/Guardian Names \_\_\_\_\_

Address \_\_\_\_\_

Phone \_\_\_\_\_ E-Mail \_\_\_\_\_

Special Requirements \_\_\_\_\_

I agree to let my child participate in "Forensics Exploration" at Lake Country School.

Parent/Guardian Signature \_\_\_\_\_



Forensics Forever

## Forensics Exploration! (Grades k-2)

"Forensics is the art of oral interpretation-- Quite possibly the most academic of the performing arts!"

Get ready for an amazing time as we explore all of the mediums for performing in front of peers, loved ones and people you have never met in your life! We will explore Improv, Public speaking, Scene study and much more! Children of all ages should prepare for a fun, fast-paced, fantastic time as we work together to help your child learn everything they need to know about performing for the stage.

Signup now! Space is limited...

**Who:** Any student from grades k-2

**What:** *The most awesome class ever!!*

**Where:** Lake Country School

**When:** Mondays, September 22nd-October 27th (6 Weeks) 3:15-4:15pm

**Cost: \$75/Student (Please make checks available to "Lake Country School")**

**About the Instructor:** Dontae Hill is taking a gigantic leap in Forensics/Performing arts with over 10 years of experience as he manages to immerse himself in various entities such as:

**\*Forensics:** Leading the Lake Country Wildcats to a state championship in 2013

**\*Theatre:** Teaching Improv and Acting at some of the most esteemed venues

**\*Directing:** Micromanaging a variety of classes as assistant director for Carroll Academy in summer 2013

**\*Innovation:** Becoming the founder of Carroll University's Collegiate Forensics team

-----  
Name \_\_\_\_\_ Grade \_\_\_\_\_

Age \_\_\_\_\_ Parent/Guardian Names \_\_\_\_\_

Address \_\_\_\_\_

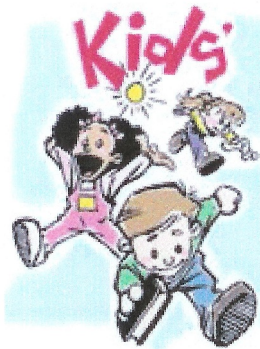
Phone \_\_\_\_\_ E-Mail \_\_\_\_\_

Special Requirements \_\_\_\_\_

I agree to let my child participate in "Forensics Exploration" at Lake Country School.

Parent/Guardian Signature \_\_\_\_\_





# GOOD NEWS CLUB

**Good News Club** is an exciting, fun-filled time that meets once a week on Mondays after school at Lake Country School. It is open to all boys and girls between the ages of five and twelve, regardless of religious background. Parents are welcome to attend at any time as well.

Our club meetings include:

- **Dynamic Bible Lessons**
- **Creative Learning Activities**
- **Inspiring Missionary Stories**
- **Meaningful Songs**
- **Life-changing Scripture Memory**
- **Snacks and fun**

**Hope to see you there!**  
Mondays,  
Beginning September 29th  
3:10–4:45 PM  
Lake Country School  
Room 429E

There is no cost to attend club meetings. Parent permission is required.

Parents, please fill out the permission form on the back of this promotion.

If you have questions, please call Rosie at 262-966-7331.

**Yes, I want my child/children to attend Good News Club!**

Child's Name:

1. \_\_\_\_\_ Birthday \_\_\_\_\_

2. \_\_\_\_\_ Birthday \_\_\_\_\_

3. \_\_\_\_\_ Birthday \_\_\_\_\_

Parent name \_\_\_\_\_

Parent signature \_\_\_\_\_

Address \_\_\_\_\_

City \_\_\_\_\_ Zip Code \_\_\_\_\_

Phone – home/cell \_\_\_\_\_

E-mail \_\_\_\_\_

Emergency Contact # \_\_\_\_\_

Health Concerns \_\_\_\_\_

Food Allergies \_\_\_\_\_

My child(ren) will be picked up after Club by:  
\_\_\_\_\_

My child(ren) will attend after-school day care at LCS after Club.

My child(ren) may have his/her picture taken at Club. \_\_Yes \_\_No

**Bring this signed permission with you for your 1st Club or drop it off at the school office.**



# September 2014

10 11 12

## Lake Country School

K4-3 grade Lunches \$2.45  
 4<sup>th</sup> -8<sup>th</sup> Grade Lunches \$2.55  
 Milk \$.30

### MONDAY

### TUESDAY

### WEDNESDAY

### THURSDAY

### FRIDAY

<p><b>1</b></p>	<p><b>2</b> <u>Welcome Back</u></p> <p>Mini Corn Dogs OR Backyard          BBQ Chicken Salad          Romaine Lettuce Salad          Crispy Cucumbers          Mixed Melon Cubes</p>	<p><b>3</b></p> <p>Cheesy Pizza OR Sloppy Jo on a Bun          Crispy Carrots w/ Red Pepper Hummus          Garden Vegetable Applesauce Cup</p>	<p><b>4</b></p> <p>Macaroni and 3 Cheese Pasta OR Crispy Chicken Fingers          Spinach Salad          Celery Sticks          Crisp Apple          Cookie</p>	<p><b>5</b></p> <p>Fruit and Yogurt Parfait w/ Bagel OR Waffle w/ Yogurt Cup          Cherry Tomatoes          Hash brown          Apple Juice</p>
<p><b>8</b></p> <p>Mashed Potato Bar w/ Toppings OR Chicken Nuggets          Slice of Bread          Romaine Lettuce          Crispy Cucumbers          Cup of Fruit</p>	<p><b>9</b></p> <p>Pepperoni Pizza OR Hamburger on Bun          Summer Coleslaw          Crispy Carrots          Banana</p>	<p><b>10</b></p> <p>Salad Bar w/ Roll OR Chicken Patty on a Bun          Garden Vegetable          Romaine Lettuce Salad          Grape Juice          Dessert</p>	<p><b>11</b></p> <p>Yogurt Cup and Fresh Strawberries Or Popcorn Chicken          Mini Carrots w/ White Bean          Tuscan Hummus          Spinach Salad          Peach Cup</p>	<p><b>12</b></p> <p>Mozzarella Pizza Dippers w/ Sauce OR Lasagna Casserole          Crunchy Veggies          Italian Salad          Apple          Cookie</p>
<p><b>15</b></p> <p>Hebrew National Hot Dog OR Garlic Rosemary Chicken w/ Mashed Potatoes          Baked Beans          Mini Carrots          Orange Smiles</p>	<p><b>16</b></p> <p>Greek Salad w/ Roll OR Cheeseburger on Bun          Bag of Sun Chips          Romaine Lettuce          Cucumber Slices          Watermelon Cubes</p>	<p><b>17</b></p> <p>Soft Shell Taco OR Walking Taco w/ Nacho Cheese Doritos          Cheese, Salsa and Shredded Lettuce          Black Beans and Corn Salsa          Banana / Dessert</p>	<p><b>18</b></p> <p>Grilled American and Mozzarella Cheese Sandwich OR Meatballs and Sauce w/ Mozzarella Cheese on Top          Spinach Salad          Celery Sticks          Apple Juice</p>	<p><b>19</b></p> <p>Vanilla Yogurt Cup and Fresh Fruit Cup OR Baked Potato w/ Toppings          Mini Carrots          Salad          Apple</p>
<p><b>22</b></p> <p>Pasta w/ Sauce and Cheddar Cheese OR Chicken Patty on Bun          Mini Carrots and Cherry Tomato          Peach Cup          Chex Mix</p>	<p><b>23</b></p> <p>Fruit and Yogurt Parfait w/ Bagel OR Pancakes w/ Yogurt Cup          Celery Sticks          Hash brown          Juice Cup</p>	<p><b>24</b></p> <p>Chef Salad w/ Roll OR State Fair Corn Dog          Baked Beans          Spinach Salad          Applesauce Cup          Cookie</p>	<p><b>25</b></p> <p>Cheese Pizza OR Vanilla Yogurt Cup w/ Fresh Strawberries          Romaine Lettuce Salad          Mini Carrots w/ White Bean          Tuscan Hummus          Fresh Fruit Choice</p>	<p><b>26</b></p> <p>Chicken Nuggets OR Mozzarella Pizza Dippers w/ Sauce          Italian Salad          Cucumbers and Celery          Apple</p>
<p><b>29</b></p> <p>Walking Taco OR Chicken Fajita          Black Bean and Corn Salsa          Shredded Lettuce and Cheese          Mini Carrots          Mixed Melon Cubes          Chex Mix</p>	<p><b>30</b></p> <p>Pasta and Sauce w/ Cheese Cup OR Chicken Patty on Bun          Romaine Lettuce          Pea Pods and Celery          Peach Cup</p>	<p>*****  <b>ALL Meals purchased include a ½ Pint Milk</b>  <b>, Your Choices are:</b>          1% White          Skim White          Chocolate Skim          *****</p>		<p>September's Harvest of the Month is Cantaloupe and Watermelon.          LCS Hot Lunch Program will be incorporating these wonderful fruits into student's weekly fruit Choices.</p>



### Did You Know????

#### A Slice of Melon History

\*\*Melons were first cultivated in Persia and northern Africa nearly 4,000 years ago, and later by ancient Greeks and Romans.

\*\* Introduced to western and northern Europe during the Middle Ages, melons were harvested by the Spaniards and later the French and British.

\*\* Christopher Columbus brought the first melon seeds to North America on his second expedition, while watermelons arrived with African slaves.

\*\*In 1683, the melon was introduced to California by Spanish missionaries who cultivated them.

\*\* Melons and watermelons were grown almost exclusively in home gardens until the first half of the 20th century, when more disease- and wilt-resistant cultivars were developed by the USDA.



## September 2014 Calendar of Events

Monday	Tuesday	Wednesday	Thursday	Friday
		<p><b>10</b> Wear Yellow for KG</p> <p>3:15-4:30 p.m. Student Council Mtg Guidance Rm</p> <p>6:30 p.m. Cub Scout Night Upper Gym</p> <p><i>Wildcat Clips</i> emailed home; also available on website at: <a href="http://www.lcs.k12.wi.us">www.lcs.k12.wi.us</a></p>	<p><b>11</b> Wear Green for KG</p> <p>6:30 p.m. PTO Executive Mtg in Conference Rm</p>	<p><b>12</b> Wear Blue for KG</p> <p><b><u>SATURDAY, 09/13/14</u></b> 9-12 noon Rummage Sale Dropoff @ Shed (next to environmental bldg.)</p>
<p><b>15</b> Wear Purple for KG</p>	<p><b>16</b> Wear Pink for KG</p> <p>3:30 p.m. Staff Mtg - LMC</p>	<p><b>17</b> Wear Brown for KG</p> <p>7:30 a.m. PTO Sponsored Staff Appreciation Breakfast – Staff Lounge</p>	<p><b>18</b> Wear Grey for KG</p>	<p><b>19</b> Wear Black &amp; White for KG</p> <p>Deadline to Submit Articles for the Wildcat Clips</p> <p>10-2:30 p.m. 4<sup>th</sup> Grade Field Trip to Hartford Buckskinners</p> <p>4:15-8:30 p.m. AHS Marching Band Night for 8<sup>th</sup> Graders @ AHS North Campus</p> <p><b><u>SATURDAY, 09/20/14</u></b> 9-12 noon Rummage Sale Dropoff @ Shed (next to environmental bldg.)</p>
<p><b>22</b></p> <p>6:30 p.m. Grade 4 Band-Strings Mtg</p>	<p><b>23</b></p> <p>8 a.m. Picture Retake Day Stage</p> 	<p><b>24</b></p> <p>7:15 a.m. PTO Sponsored Muffins with Moms Cafetorium</p> <p><i>Wildcat Clips</i> emailed home; also available on website at: <a href="http://www.lcs.k12.wi.us">www.lcs.k12.wi.us</a></p>	<p><b>25</b></p>	<p><b>26</b></p> <p>7-9 p.m. Gr 7/8 Dance @ Stone Bank \$5.00 and Student ID</p> <p><b><u>SATURDAY, 09/27/14</u></b> 9-12 noon Rummage Sale Dropoff @ Shed (next to environmental bldg.)</p>
<p><b>29</b> 8-3 p.m. Rummage Sale Dropoff Upper Gym</p> <p>3:15-4:45 p.m. Good News Club Health Classroom</p>	<p><b>30</b> 8-3 p.m. Rummage Sale Dropoff Upper Gym</p> <p>8-3 p.m. 8<sup>th</sup> Grade Field Trip to Spring Green</p>			

This information is accurate as of our Wildcat clips deadline. Information may change for various reasons. If you would like to confirm information, please contact the coordinator of the event.