

2018/19
HYBRID RESOURCE GUIDE



NUTRITION THAT
YIELDS
www.seedcorn.com



THE MC STORY

“In order to affect the kinds of change we are seeing in the industry, we had to convince them that corn wasn’t “just corn”.

So many people want to make a difference in the world, a lasting impact that shapes future generations. To some that could be cultural or social change, improving their community, or advancing their faith. And while I believe strongly in all of those, because they're incredible and worthwhile causes, my family has been given an opportunity to see change in a different way: by making a significant difference in how countries around the world feed their people.

From the beginning, long before we owned Masters Choice, we saw that unbelievable inefficiencies existed in the agricultural industry, specifically in how we were feeding our livestock. In order to affect the kinds of change we are seeing now, we first had to convince the industry that corn wasn't "just corn" and different physical and chemical characteristics could alter the way different hybrids feed to livestock. Feeding a softer textured grain, with increased feeding values, can result in up to 50% increased efficiency on a dairy operation.

It's been an uphill battle, but we're starting to see a rewarding shift in the industry's way of thinking, with more companies seeing the value in corn developed for its end use. As our business grows, more and more livestock operations are beginning to feed highly digestible silage. As this trend continues we will see a real change in the efficiency of our food source. This will make an incredible difference in the global economy and world hunger.

We can't wait to see what God has in store for our future, as we pledge ourselves to staying on the cutting edge of research and development. At Masters Choice, we know we aren't the biggest player in the enormous ag industry, far from it. But we think there are few companies better positioned than us to make a true, lasting impact that we can be proud of.

— Andrew Crabtree, Marketing Director



CONTENT CREATORS

We like the people that work here, and we think if you watch our content you will too. The people that work at Masters Choice are not only deeply knowledgeable about corn and the ag industry, but they're pretty funny too. Our goal is to create content that reflects both of those, because education and information can get a little boring without a little personality. So, whether we are producing video content for our YouTube channel, writing articles for our blog or

Facebook, or recording episodes of our podcast, our goal is to make valuable ag centered content that ag consumers find relevant and entertaining. We genuinely appreciate each new subscriber and follower and, as always, we welcome your feedback on how we can make the experience more valuable in the future.



Each week our MC Daily series offers a behind-the-scenes look into the daily operations at Masters Choice. Sometimes it's fun and playful; other times it's informational and educational.



Our MC Minutes series videos are shorter and more educational than MC Daily. Averaging less than 2 minutes, these are quick hits on relevant topics that matter most to the ag community.



Currently, we're putting the same amount of time and effort developing our audio experience as we are video. The MC Podcast, released every Monday, analyzes current trends and topics in ag. Find The MC Podcast on iTunes, at seedcorn.podbean.com, or soundcloud.com/mcseedcorn. Video highlights are also available on our YouTube channel.



youtube.com/masterschoice



facebook.com/mcseedcorn



instagram.com/masters.choice

CONTACT INFORMATION

WORKING WITH THE BEST



MAIN OFFICE | LANCASTER, PA
EMAIL: INFO@KINGSAGRISEEDS.COM
PHONE: (717) 687-6224



MAIN OFFICE | ROME, GA
EMAIL: INFO@SOUTHEASTAGRISEEDS.COM
PHONE: (717) 682-6134

ROD PORTER | *NORTHERN REGION*
EMAIL: RODPORTER@KINGSAGRISEEDS.COM
PHONE: (607) 227-0836

HAROLD SCHROCK | *NORTHERN REGION SUPPORT*
EMAIL: HAROLDSCHROCK@KINGSAGRISEEDS.COM
PHONE: (315) 723-1681

DAVID HUNSBERGER | *CENTRAL REGION*
EMAIL: DAVIDHUNSBERGER@KINGSAGRISEEDS.COM
PHONE: (814) 880-5186

JOSH BAKER | *SOUTHEAST AGRISEEDS (GA, TN, FL)*
EMAIL: JOSHBAKER@SOUTHEASTAGRISEEDS.COM
PHONE: (717) 682-6134

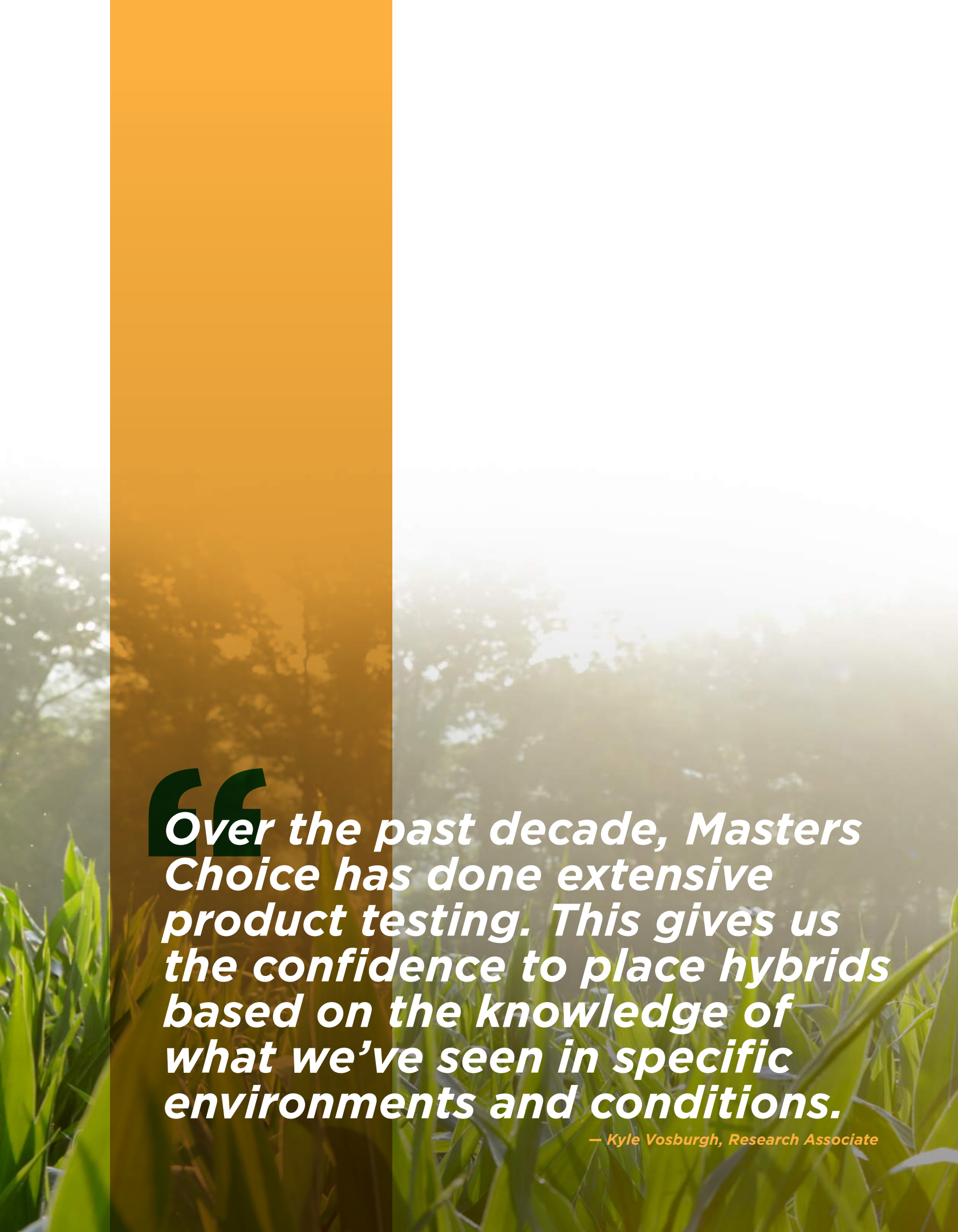
PAIGE SMART | *SOUTHEAST AGRISEEDS (NC, SC)*
EMAIL: PAIGESMART@SOUTHEASTAGRISEEDS.COM
PHONE: (910) 309-0931

TRACY NEFF | *PRODUCT TESTING*
EMAIL: TRACYNEFF@KINGSAGRISEEDS.COM
PHONE: (717) 891-2343

JOY BEAM | *TECHNICAL SALES SUPPORT*
EMAIL: JOYBEAM@KINGSAGRISEEDS.COM
PHONE: (484) 524-3481

We've always thought of our employees, dealers, and customers as our extended family. It's the only way we know how to operate. We absolutely love to hear their feedback.

— Paula Crabtree, President



“Over the past decade, Masters Choice has done extensive product testing. This gives us the confidence to place hybrids based on the knowledge of what we’ve seen in specific environments and conditions.

— Kyle Vosburgh, Research Associate



RESEARCH & DEVELOPMENT

HOW WE MAKE THE PRODUCTS YOU LOVE

During the 2017 season, Masters Choice tested over 300 hybrid crosses in our plot locations. Of those 300 crosses, only 49 were included into our experimental lineup testing, the next step in a hybrid's journey to making the lineup. At this level, experimental varieties are compared to our current lineup hybrids and other competitive hybrids in the industry. Every year there are really good hybrids that don't make it out of the experimental program, as only hybrids with elite yield, agronomics, and

nutrition make the lineup.

As new experimental varieties are introduced, existing varieties can either be retested, introduced into the commercial lineup, or discontinued. Of the 49 experimental hybrids, we sent 10 to be retested next year (20%). Out of these experimental varieties only two were deemed worthy of our commercial hybrid lineup. Being so selective on which hybrids enter the lineup ensures that only the best make it to your farm.

49

In 2017 we tested 49 hybrids in our experimental program.

10

Of the 49 hybrids tested, only 10 were selected for retesting.

2

Only 1 of these experimentals (4%) was chosen for our lineup.

— Kevin Koone, CEO



MPG INDEX

ENGINEERING, DEVELOPING, & DELIVERING QUALITY

We know that you have many options when it comes to your seed purchase, and there are even a few other companies out there claiming increased efficiency on dairy operations. But, for your money, wouldn't you rather align yourself with a company that can back up the talk? At Masters Choice, we have a unique, proprietary system that can statistically prove our milk production advantage over the competition. We call it the MPG Index and it's revolutionized how we select products for our lineup.

Masters Choice has a long history of being a company specifically targeted at livestock producers, and this has never been just "lip service". For nearly a decade, we have been carefully refining our hybrid selection tool; aiming to narrow in on the products that digest most efficiently and make the biggest impact on the farm. Through the years our selection process has evolved into the MPG Index, as new methods of testing and means of analysis have been introduced to the market. It is our firm belief that there is not one single test that can accurately correlate the quality of silage to milk production. So, rather than rely on one test, or even just one lab's analysis, we have created this unique Index to marry together over 25 different layers of testing, creating a more accurate picture. Unable to generate the amount of data we

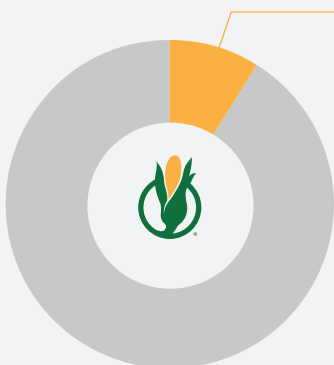
needed from just one lab, we use three different commercial labs to culminate our MPG Index score, using analyses like NDFD30, TTNDFD, and various starch digestibility measurements. We also bring several proprietary layers of testing that can't be found anywhere else. To our knowledge, this is the most exhaustive forage analytic metric in the world, and it's built in a way that allows it to continually evolve and improve to best meet your needs.

We have a unique, proprietary system that can statistically prove our milk production advantage over the competition

So, long story short, what does this fancy forage testing index mean for you, the grower? It means that our hybrids are selected based on real performance. Don't just take our word for it. To validate our Index as the most sophisticated corn silage selecting technique in the industry, we commissioned a private feeding trial, feeding 96 cows for 8 weeks. The trial confirmed that hybrids with a higher MPG Index

score had a greater potential to make milk. We could even pinpoint the results to show that 10 points difference on the Index resulted in an increase of 1.25 pounds of milk per head, per day.

So, when you're picking a silage hybrid for your livestock operation, feel confident in planting a Masters Choice hybrid that has been repeatedly tested and proven to increase efficiency, time and again.



Only 4% of the experimentals we test make it into the Masters Choice product line.

This dedication to achieving the absolute best product to offer our customers is what drives our brand forward. If a product does not meet or exceed our expectation of feed quality or agronomic quality, then it simply does not make our hybrid lineup.





NUTRITION RESEARCH

HOW WE MAKE THE BEST LIVESTOCK FEED

INCREASING EFFICIENCY

In my opinion, the most difficult thing we do here at Masters Choice is finding a way to marry nutrition research with agronomics and yield. A big part of my job here is to aid in the selection of hybrids that will result in the best feeding qualities in the industry. And though it often complicates my life, we steadfastly refuse to commercially release hybrids that don't possess a solid agronomic and yield package (because after all, what good is digestible material if you don't have any to feed?). Finding hybrids that meet all our criteria often means discarding hundreds of quality crosses, because they didn't meet every criterion. We refuse to make compromises in our effort to bring customers the best livestock feed.

The global population is expected to reach 10.5 billion in the next thirty years. That population growth places increased demand on our food supply. More than ever, it is time to increase the efficiency of operations. Corn yields are not increasing fast enough to meet the potential demand. This is why Masters Choice believes that developing products specifically to meet their "end use" is the future of our industry. Utilizing corn hybrids developed for feeding allows producers to create more milk, or meat, without increasing inputs or making sacrifices in other areas of their business.

*— Mark Kirk,
Nutrition Research Manager*



Often, the term “floury grain” is associated with products in a Masters Choice bag, but what exactly does that mean? In this context “floury” refers to the soft, white starch texture of the grain that is so different from the hard, flinty industry standard. To you, the producer, this means that these hybrids have greater starch availability and less undigestible, vitreous material that has become the norm for our competitors.

When evaluating hybrids, especially those that could have a future in our commercial lineup, we look at many different layers of nutritional testing. There is no singular, magic test that suggests a hybrid will feed exceptionally. But when we look at and combine dozens of different tests, some proprietary, we can begin to gain an understanding of how that hybrid will feed to your animals.



PASSAGE RATE

One factor that contributes to the higher digestibility of Masters Choice floury grain is passage rate. These floury hybrids can stay in the rumen up to twice as long as harder, slicker industry hybrids, even when both are ground to a fine dust. A recent study by Allen and Ying, at Michigan State University, shows that vitreous hybrids pass through the digestive system twice as fast as floury varieties. Because our hybrids stick in the rumen longer, they have more time to be digested. This creates up to 15% more energy.



FEED FIRST

Floury grain demonstrates a notable difference to feeding vitreous grain anytime of the year. This difference is most notable though, when fed early with minimal ensiling. Floury grain can be fed much earlier in the fall, without any drop in milk production. Recent data shows that a floury Masters Choice hybrid reaches 75% starch availability in only 28 days, while it takes 105 days for our competitor to reach the same milestone. This saves dairy producers from the dreaded “fall slump”, and, in turn, saves them time and money.

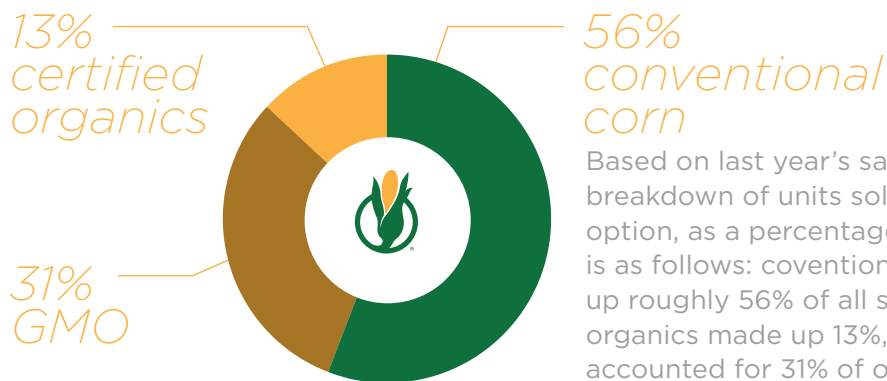
CONVENTIONAL & ORGANICS

DEDICATED TO THE BEST GENETICS

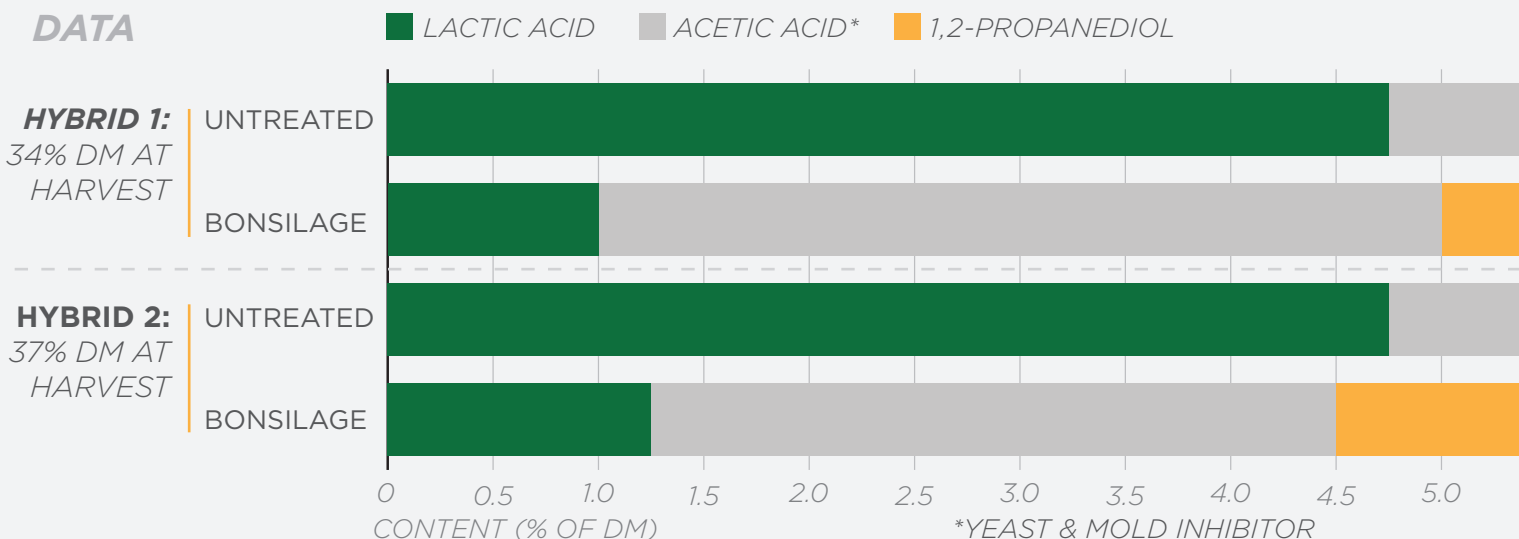
At Masters Choice, we believe the key to both feed quality and yield is through plant genetics. We also believe genetic potential can be altered by a number of factors, like weather, disease, and insect pressure. As a seed corn provider, it is our job to provide growers with the highest quality genetics for their operation, with the greatest potential for yield and quality. This is why we make our best genetics available as conventional, and often certified organic, instead of offering those top genetics only as traited varieties. Our goal is to breed and select hybrids that will

increase efficiency on any type of operation or management style, putting the tools for success in the hands of the farmer without limiting his available options. This has been our position from day one, and it will continue to be how we operate going forward.

MC SALES BREAKDOWN



INOCULENT DATA



OUR NEW INOCULENT

PRESERVING SILAGE QUALITY

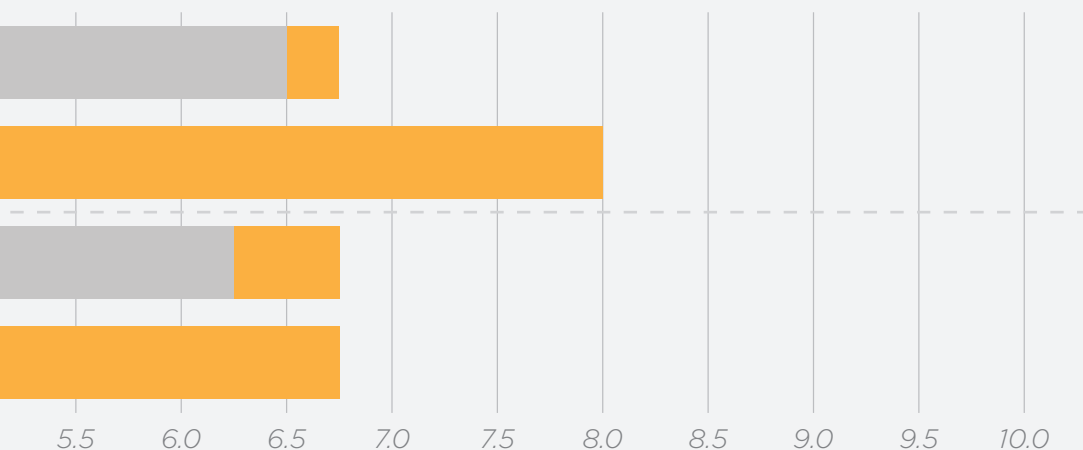
Masters Choice is excited to announce a new initiative for our business. Alongside our friends at BONSILAGE, we will be introducing you to the very best silage inoculant available on the market. This is something we are very excited about, because it fits our business model, of increased nutrition, so well. BONSILAGE will not only preserve your silage, but it will also boost the already high quality of your MC silage, enhancing its value.

When seeking out a partnering inoculant company, we did our due diligence. We sought a company that shares our values and our desire to bring top-quality feed to your operation. We know there are many options out there, but BONSILAGE is developed to not only preserve great silage quality, but also to enhance it! We believe you deserve corn hybrids that were developed to increase productivity and profitability. BONSILAGE inoculant is produced by the German parent company Schaumann. The founder, H.W. Schaumann, once said, “The animal tells the truth not the laboratory,” a statement that completely resonates with us here at Masters Choice.

— Mark Kirk, Nutrition Research Manager

INCREASED FEED VALUES
FASTER FERMENTATION
PRESERVATION OF DRY MATTER
ANAEROBIC STABILITY

The effect of a bacteria inoculant on fermentation



At Masters Choice, we've invested heavily into unique genetics. We think it's what really separates us from our competition.

— Lyn Crabtree, President

Important: Always read and follow label and bag tag instructions; only those labeled as tolerant to glufosinate may be sprayed with glufosinate ammonium based herbicides. Agrisure®, Agrisure Artesian®, Artesian™, Agrisure Duracade®, Agrisure Viptera® and E-Z Refuge® are trademarks of a Syngenta Group Company.

Seed products with the LibertyLink® (LL) trait are resistant to the herbicide glufosinate ammonium, an alternative to glyphosate in corn, and combine high-yielding genetics with the powerful, non-selective, postemergent weed control of Liberty® herbicide for optimum yield and excellent weed control. LibertyLink®, Liberty® and the Water Droplet logo are registered trademarks of Bayer Agrisure® Technology incorporated into these seeds is commercialized under license from Syngenta Seeds, Inc. Herculex® Technology incorporated into these seeds is commercialized under license from Dow AgroSciences LLC. HERCULEX® and the HERCULEX Shield are trademarks of Dow AgroSciences LLC. Before opening a bag of seed, be sure to read and understand the stewardship requirements, including applicable refuge requirements for insect resistance management, for the biotechnology traits expressed in the seed set forth in the technology agreement that you sign. By opening and using a bag of seed, you are reaffirming your obligation to comply with those stewardship requirements.

Vibrance®, Maxim®, Cruiser® and CruiserMaxx® are trademarks of a Syngenta Group Company. CruiserMaxx Corn 250 is an on-seed application of Cruiser 5FS insecticide delivered at the 0.25 mg a.i./seed rate and Maxim Quattro fungicide.

“We believe we are utilizing the best traits and seed care program in the industry.”

— Lyn Crabtree, President



TRAITS & SEED CARE

PRESERVING OUR GENETIC POTENTIAL

We live in a world where technology is ever changing. This is no different in the sector of agriculture. At Masters Choice, we are committed to bringing you the very best in traits and seed treatments. Our partnership with Syngenta gives us the ability to offer our hybrids with the very best above- and below-ground pest protection. Our high standards in seed treatment through the CruiserMaxx® program, and the addition of our organic seed treatment MicroMaster, give you the very best start to your crop.

The best hybrids start with the best genetics, and Agrisure® traits help to protect those genetics. Masters Choice has long been committed to offering the very best genetics in both conventional and traited options. This allows those growers who choose to grow conventional or organic corn the same genetics as those who opt for traited versions. We must accommodate an ever-changing marketplace full of technologies. That involves providing genetics throughout our lineup that increase energy per acre with or without traits.

Nothing gives your seed better protection against early-season issues like the proper seed treatment. The CruiserMaxx® program is the industry-leading standard in seed treatment. With our addition of MicroMaster as an offering for our organic growers, Masters Choice continues to set the bar high in seed care. Reaching the highest quality and yielding corn starts with the right seed treatment.

**Please Note: All MCT traited varieties include the Agrisure® GT trait.*

TRAITS

Agrisure® GT: Excellent tolerance for glyphosate-based herbicides.

Agrisure® 3000GT: The Agrisure® 3000GT trait stack offers control of corn borer and corn rootworm with tolerance to both glyphosate and glufosinate herbicides.

Agrisure Viptera® 3110: The Agrisure Viptera® 3110 trait stack delivers above-ground corn insect control. It reduces mycotoxin contamination by limiting insect feeding damage to protect the quality of grain. Ideal for areas where corn rootworm management is not a key focus.

Agrisure Viptera® 3111: The Agrisure Viptera® 3111 trait stack offers above- and below-ground corn insect control to protect yield potential.

Agrisure Viptera® 3220 E-Z Refuge®: The Agrisure Viptera® 3220 E-Z Refuge® trait stack offers corn growers dual modes of action against ear-feeding insects, including corn borer, with an integrated refuge. It is ideal for areas where rootworm management is not a key focus.

Agrisure® 3122 E-Z Refuge®: The Agrisure® 3122 E-Z Refuge® trait stack offers the convenience of an integrated refuge featuring two modes of action against corn borer and corn rootworm, as well as control of ear-feeding insects.

Agrisure Duracade® 5122 E-Z Refuge®: The Agrisure Duracade® 5122 E-Z Refuge® trait stack offers two modes of action against corn rootworm and corn borer with an integrated refuge.

SEED CARE

MicroMaster: MicroMaster is a certified organic, humic acid based seed coating. Through electrostatic attraction and complex chelation, MicroMaster allows the plant to efficiently use the minerals and nutrients in the soil. These properties combine to give increased emergence and early season vigor.

CruiserMaxx® Corn 250: CruiserMaxx® Corn 250 insecticide/fungicide seed treatment, a combination of separately registered products, offers broad-spectrum protection against early-season insects and seedborne and soilborne disease.

Maxim® Quattro: Maxim® Quattro seed-applied fungicide contains four active ingredients for broad-spectrum control against early-season disease.

Vibrance®: Vibrance® seed treatment fungicide offers best-in-class disease protection and systemic performance against *Rhizoctonia* for optimized root health and improved crop performance.

**Masters Choice conventional seed treatment includes Maxim® Quattro, Vibrance®, and Lorsban® Insecticide.*



MCT2552

75 DAYS R.M.

FLOURY SPECTRUM



AVAILABLE AS:

MCT2552 (VIP 3110)

Silage Yield	8	Emergence	8
Milk Per Ton	7	Plant Height	M
Sugars	8	Ear Height	M-H
Fiber Digestibility	8	Ear Flex	SEMI-FLEX
Grain Yield	9	Stalk Strength	8
Test Weight	7	Root Strength	7
Dry Down	8	Disease Tolerance	8
Starch Digestibility	7	Drought Tolerance	7

Planting Pop: 26K - 32K

MC3220

82 DAYS R.M.

FLOURY SPECTRUM



AVAILABLE AS:

MC3220 (ORG.)
MC3220 (CONV.)
MCT3221 (GT)
MCT3223 (3000GT)

Silage Yield	9	Emergence	9
Milk Per Ton	8	Plant Height	M-T
Sugars	8	Ear Height	M
Fiber Digestibility	8	Ear Flex	SEMI-FLEX
Grain Yield	8	Stalk Strength	8
Test Weight	6	Root Strength	9
Dry Down	7	Disease Tolerance	8
Starch Digestibility	8	Drought Tolerance	8

Planting Pop: 28K - 34K

MCT3393

83 DAYS R.M.

FLOURY SPECTRUM



AVAILABLE AS:

MCT3393 (3000GT)

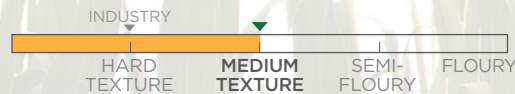
Silage Yield	8	Emergence	8
Milk Per Ton	9	Plant Height	M
Sugars	8	Ear Height	M
Fiber Digestibility	9	Ear Flex	SEMI-FLEX
Grain Yield	7	Stalk Strength	8
Test Weight	7	Root Strength	8
Dry Down	7	Disease Tolerance	8
Starch Digestibility	9	Drought Tolerance	8

Planting Pop: 30K - 34K

MC3890

88 DAYS R.M.

FLOURY SPECTRUM



AVAILABLE AS:

MC3890 (CONV.)
MCT3891 (GT)

Silage Yield	9	Emergence	7
Milk Per Ton	8	Plant Height	M-T
Sugars	8	Ear Height	M
Fiber Digestibility	8	Ear Flex	SEMI-FLEX
Grain Yield	8	Stalk Strength	8
Test Weight	7	Root Strength	8
Dry Down	8	Disease Tolerance	9
Starch Digestibility	8	Drought Tolerance	8

Planting Pop: 28K - 32K

STRENGTHS

- Very early hybrid with outstanding yield
- Hybrid adapts very well east to west in northern zone
- Develops strong stalks for an early maturity hybrid

MANAGEMENT TIPS

- Great standability offers harvest flexibility as silage or grain
- Works very well in double cropping systems and/or delayed planting
- Top end yield punch, making it a good grain option
- Has some susceptibility to Goss's Wilt

STRENGTHS

- Strong emergence and very good seedling vigor
- Fast-growing hybrid, early-flowering for quick finish
- Excellent roots and very good stalks for drought tolerance
- Outstanding yield potential with good northern movement

MANAGEMENT TIPS

- Monitor closely for proper silage harvest moistures
- Early-maturing hybrid, allows for late-summer forage seedings
- Strong competitive performance allows for varying soil types

STRENGTHS

- Showy silage with great eye appeal and high tonnage
- Strong agronomics paired with great digestibility
- 3000GT trait for areas with Corn Root Worm pressure

MANAGEMENT TIPS

- A solid performer for corn on corn
- Great, early row shading
- Excellent hybrid for early planting

STRENGTHS

- This hybrid has great versatility within its relative maturity zone
- MCT3891 is a great companion hybrid for MCT4054
- Great plant health for areas with heavy leaf disease pressure

MANAGEMENT TIPS

- MC3890 moves east to west very well
- Do not move south of zone
- Produces silage with high starch content as a percentage of dry matter

MCT3393

NEW HYBRID SPOTLIGHT

MCT3393 is an 83 day hybrid available with the Agrisure® 3000GT trait stack. Ideal for silage, high moisture corn, or dry grain, MCT3393 is an agronomically strong hybrid with good feeding characteristics. It looks great in the field and performs well in less than ideal soils, corn after corn situations, no-till and even cooler soils when planted a little early. MCT 3393 is another great early season Masters Choice option offering you the chance to diversify your crop without sacrificing yield, agronomic stability or digestibility.

MC4050

90 DAYS R.M.

FLOURY SPECTRUM



AVAILABLE AS:

- MC4050 (ORG.)**
- MC4050 (CONV.)**
- MCT4054 (VIP 3111)**
- MCT4056 (3220 E-Z)**
- MCT4058 (5222 E-Z)**

Silage Yield	9	Emergence	8
Milk Per Ton	8	Plant Height	T
Sugars	9	Ear Height	M-H
Fiber Digestibility	8	Ear Flex	SEMI-FLEX
Grain Yield	8	Stalk Strength	9
Test Weight	7	Root Strength	8
Dry Down	9	Disease Tolerance	8
Starch Digestibility	9	Drought Tolerance	7

Planting Pop: 28K - 34K

MC4570

95 DAYS R.M.

FLOURY SPECTRUM



AVAILABLE AS:

- MC4570 (CONV.)**
- MCT4572 (VIP 3110)**

Silage Yield	9	Emergence	8
Milk Per Ton	8	Plant Height	M-T
Sugars	8	Ear Height	M-H
Fiber Digestibility	7	Ear Flex	SEMI-FLEX
Grain Yield	8	Stalk Strength	8
Test Weight	7	Root Strength	8
Dry Down	8	Disease Tolerance	9
Starch Digestibility	8	Drought Tolerance	8

Planting Pop: 28K - 32K

MC4630

96 DAYS R.M.

FLOURY SPECTRUM



AVAILABLE AS:

- MC4630 (ORG.)**
- MC4630 (CONV.)**
- MCT4632 (VIP 3110)**

Silage Yield	8	Emergence	10
Milk Per Ton	9	Plant Height	M-T
Sugars	8	Ear Height	M
Fiber Digestibility	9	Ear Flex	FLEX
Grain Yield	9	Stalk Strength	8
Test Weight	7	Root Strength	7
Dry Down	8	Disease Tolerance	8
Starch Digestibility	8	Drought Tolerance	8

Planting Pop: 27K - 32K

MC4880

98 DAYS R.M.

FLOURY SPECTRUM



AVAILABLE AS:

- MC4880 (ORG.)**
- MC4880 (CONV.)**
- MCT4881 (GT)**
- MCT4884 (VIP 3111)**

Silage Yield	8	Emergence	9
Milk Per Ton	8	Plant Height	M-T
Sugars	8	Ear Height	M
Fiber Digestibility	8	Ear Flex	SEMI-FLEX
Grain Yield	8	Stalk Strength	8
Test Weight	7	Root Strength	9
Dry Down	9	Disease Tolerance	7
Starch Digestibility	8	Drought Tolerance	8

Planting Pop: 28K - 34K

MC4930

99 DAYS R.M.

FLOURY SPECTRUM



AVAILABLE AS:

MC4930 (CONV.)
MCT4933 (3000GT)
MCT4934 (VIP 3111)
MCT4938 (5222 E-Z)

Silage Yield	9	Emergence	7
Milk Per Ton	8	Plant Height	M
Sugars	9	Ear Height	M
Fiber Digestibility	9	Ear Flex	SEMI-FLEX
Grain Yield	8	Stalk Strength	7
Test Weight	7	Root Strength	7
Dry Down	7	Disease Tolerance	8
Starch Digestibility	9	Drought Tolerance	8

Planting Pop: 28K - 34K

MC5250

102 DAYS R.M.

FLOURY SPECTRUM



AVAILABLE AS:

MC5250 (ORG.)
MC5250 (CONV.)

Silage Yield	9	Emergence	7
Milk Per Ton	9	Plant Height	M-T
Sugars	9	Ear Height	M
Fiber Digestibility	9	Ear Flex	FLEX
Grain Yield	8	Stalk Strength	8
Test Weight	7	Root Strength	9
Dry Down	8	Disease Tolerance	8
Starch Digestibility	9	Drought Tolerance	8

Planting Pop: 26K - 32K

MC5300

103 DAYS R.M.

FLOURY SPECTRUM



AVAILABLE AS:

MC5300 (ORG.)

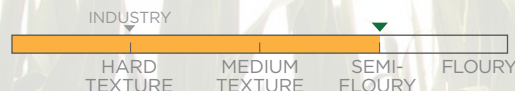
Silage Yield	8	Emergence	8
Milk Per Ton	8	Plant Height	M-T
Sugars	8	Ear Height	M
Fiber Digestibility	8	Ear Flex	FLEX
Grain Yield	7	Stalk Strength	8
Test Weight	6	Root Strength	7
Dry Down	7	Disease Tolerance	7
Starch Digestibility	8	Drought Tolerance	7

Planting Pop: 26K - 34K

MC5370

103 DAYS R.M.

FLOURY SPECTRUM



AVAILABLE AS:

MC5370 (CONV.)
MCT5371 (GT)
MCT5375 (VIP 3122 E-Z)

Silage Yield	9	Emergence	9
Milk Per Ton	10	Plant Height	T
Sugars	8	Ear Height	M-H
Fiber Digestibility	9	Ear Flex	SEMI-FLEX
Grain Yield	9	Stalk Strength	9
Test Weight	6	Root Strength	8
Dry Down	7	Disease Tolerance	8
Starch Digestibility	10	Drought Tolerance	9

Planting Pop: 26K - 32K

NOTES

STRENGTHS

- Healthy plant with great eye appeal
- Good combination of agronomics and great feeding quality
- Performs well at moderate to lower populations for livestock feed
- Great option for corn silage, high moisture corn, or dry grain

MANAGEMENT TIPS

- Use caution for no till and cold soils
- Great option for continuous corn acres
- Great companion for MCT4881
- Does not move south as well as MC4880

STRENGTHS

- Consistent top-end yield punch on full flex, white cob ears
- Enhanced silage and nutritional grain quality
- Excellent choice for varying soil types
- Outstanding health and agronomics

MANAGEMENT TIPS

- Fertilize well at all planting populations for peak yields
- Responds well to corn after corn programs
- Adapted to all tillage systems

STRENGTHS

- Strong emergence and seedling vigor for organic production
- Very good tonnage and grain yield with excellent nutritional qualities
- Wide leaf, showy, robust plant for good eye appeal in the field that drives performance

MANAGEMENT TIPS

- Harvest promptly when ready for dry grain
- Plant at medium populations
- Works best following a cropping rotation

STRENGTHS

- Taller hybrid with very competitive yields for silage or grain
- Excellent stalks and very good roots contribute to broad adaptation
- Best choice for less productive to highly productive fields
- High starch content silage with excellent starch digestibility

MANAGEMENT TIPS

- Position as a first plant hybrid in spring and in cold soils or no-till situations
- Can be utilized north as a fuller season hybrid and south as an early maturity hybrid

INNOVATION STANDARD MAKING A DIFFERENCE

The Research and Development team at Masters Choice is tasked with continuously improving the Masters Choice hybrid lineup. This is a task that is not taken lightly as they work with universities, private research companies and plot coordinators across the country to assess the agronomic and nutritional characteristics of selected crosses.

In 2017-18 we ran 300 crosses with only 2 of those making the lineup as new hybrids. This is a testament to the high standards we keep when considering hybrids for our lineup.

Learn more about our R&D process starting on page 5.

MC530

105 DAYS R.M.

FLOURY SPECTRUM
INDUSTRY



AVAILABLE AS:
MC530 (CONV.)

Silage Yield	8	Emergence	7
Milk Per Ton	8	Plant Height	M-T
Sugars	9	Ear Height	M
Fiber Digestibility	8	Ear Flex	FLEX
Grain Yield	8	Stalk Strength	7
Test Weight	6	Root Strength	9
Dry Down	7	Disease Tolerance	6
Starch Digestibility	8	Drought Tolerance	7

Planting Pop: 26K - 32K

MC5660

106 DAYS R.M.

FLOURY SPECTRUM
INDUSTRY



AVAILABLE AS:
MC5660 (CONV.)
MCT5661 (GT)
MCT5663 (3000GT)

Silage Yield	9	Emergence	9
Milk Per Ton	8	Plant Height	T
Sugars	9	Ear Height	M
Fiber Digestibility	8	Ear Flex	FLEX
Grain Yield	9	Stalk Strength	9
Test Weight	6	Root Strength	7
Dry Down	8	Disease Tolerance	8
Starch Digestibility	9	Drought Tolerance	9

Planting Pop: 26K - 32K

MC535

107 DAYS R.M.

FLOURY SPECTRUM
INDUSTRY



AVAILABLE AS:
MC535 (ORG.)
MC535 (CONV.)
MCT535 GT (GT)

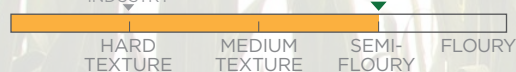
Silage Yield	8	Emergence	9
Milk Per Ton	9	Plant Height	M-T
Sugars	9	Ear Height	M
Fiber Digestibility	9	Ear Flex	FLEX
Grain Yield	8	Stalk Strength	9
Test Weight	7	Root Strength	9
Dry Down	8	Disease Tolerance	7
Starch Digestibility	7	Drought Tolerance	8

Planting Pop: 26K - 32K

MC5790

107 DAYS R.M.

FLOURY SPECTRUM
INDUSTRY



AVAILABLE AS:
MC5790 (ORG.)
MC5790 (CONV.)

Silage Yield	9	Emergence	10
Milk Per Ton	9	Plant Height	M-T
Sugars	9	Ear Height	M
Fiber Digestibility	9	Ear Flex	SEMI-FLEX
Grain Yield	8	Stalk Strength	8
Test Weight	7	Root Strength	8
Dry Down	8	Disease Tolerance	9
Starch Digestibility	8	Drought Tolerance	8

Planting Pop: 28K - 32K

NOTES

STRENGTHS

- High quality, dense silage with high tonnage
- High yielding nutritious grain on a solid root foundation
- Excellent northern movement

MANAGEMENT TIPS

- Do not move south of maturity zone
- Avoid late planting as stalk lodging may occur
- Responds favorably to foliar fungicides in high disease environments

STRENGTHS

- Showy plant with great flex
- Excellent stalk strength
- Very good stress, heat, and drought tolerance
- Excels in wide array of planting populations

MANAGEMENT TIPS

- Use both north and south of optimal zone of utilization
- Great emergence, tolerates no-till and corn after corn
- Favorable to early planting

STRENGTHS

- Consistent quality and yield performance
- High sugar silage quality
- Better southern movement than MC530

MANAGEMENT TIPS

- Variable performance when planted late
- Plant first and harvest first to maximize performance and yield
- Responds favorably to foliar fungicide in high disease environments

STRENGTHS

- Great seedling vigor and aggressive early growth
- Dark green, healthy plant
- Excellent combination of high yield potential and great feeding qualities
- Early seedling vigor and leaf structure make this hybrid an excellent fit for organic systems

MANAGEMENT TIPS

- Great option for continuous corn
- Very good option for early planting and no-till systems
- Excellent stalk quality and standability offers multiple harvest options

NON-GMO PROJECT VERIFIED

In efforts to provide growers with every potential opportunity for premiums possible, Masters Choice has gone through the process of getting a full lineup of Non-GMO verified hybrids. With a selection of 10 hybrids ranging from 82-117 days, Masters Choice has the largest Non-GMO Project verified lineup in the seed corn industry.

The Project Verification Program represents products from over 3000 brands and over \$19 billion in sales. However, only 3 seed corn companies offer non-GMO Project verified options, and Masters Choice is proud to be one of them.



MC6150

111 DAYS R.M.

FLOURY SPECTRUM



AVAILABLE AS:

- MC6150 (ORG.)**
- MC6150 (CONV.)**
- MCT6151 (GT)**
- MCT6153 (3000GT)**

Silage Yield	10	Emergence	8
Milk Per Ton	9	Plant Height	M-T
Sugars	8	Ear Height	M-L
Fiber Digestibility	9	Ear Flex	SEMI-FLEX
Grain Yield	8	Stalk Strength	9
Test Weight	7	Root Strength	8
Dry Down	8	Disease Tolerance	8
Starch Digestibility	8	Drought Tolerance	8

Planting Pop: 26K - 34K

MC6360

113 DAYS R.M.

FLOURY SPECTRUM



AVAILABLE AS:

- MC6360 (CONV.)**
- MCT6361 (GT)**
- MCT6363 (3000GT)**
- MCT6365 (VIP 3122 E-Z)**

Silage Yield	9	Emergence	8
Milk Per Ton	10	Plant Height	M-T
Sugars	9	Ear Height	M-H
Fiber Digestibility	10	Ear Flex	SEMI-FLEX
Grain Yield	9	Stalk Strength	8
Test Weight	7	Root Strength	8
Dry Down	7	Disease Tolerance	8
Starch Digestibility	8	Drought Tolerance	8

Planting Pop: 30K - 36K

MCT6434

114 DAYS R.M.

FLOURY SPECTRUM



AVAILABLE AS:

- MCT6434 (VIP 3111)**

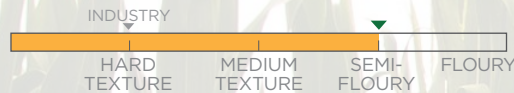
Silage Yield	9	Emergence	7
Milk Per Ton	8	Plant Height	T
Sugars	8	Ear Height	M-H
Fiber Digestibility	8	Ear Flex	SEMI-FLEX
Grain Yield	8	Stalk Strength	7
Test Weight	6	Root Strength	7
Dry Down	7	Disease Tolerance	6
Starch Digestibility	7	Drought Tolerance	8

Planting Pop: 28K - 32K

MC6550

115 DAYS R.M.

FLOURY SPECTRUM



AVAILABLE AS:

- MC6550 (CONV.)**
- MCT6552 (VIP 3110)**

Silage Yield	9	Emergence	8
Milk Per Ton	9	Plant Height	M-T
Sugars	7	Ear Height	M
Fiber Digestibility	8	Ear Flex	SEMI-FLEX
Grain Yield	8	Stalk Strength	9
Test Weight	8	Root Strength	9
Dry Down	7	Disease Tolerance	9
Starch Digestibility	9	Drought Tolerance	8

Planting Pop: 24K - 34K

NOTES

STRENGTHS

- High yielding performance in grain and silage
- Very good combination of agronomics, plant health, dark green color, and ear flex
- Hybrid package adapted to varying soil types and grower management
- First rate nutrition package, good north and south utilization

MANAGEMENT TIPS

- Adequate weed control necessary on rows 36" or wider
- #1 choice for delayed harvest and continuous corn options
- Ear flex and kernel depth allows for various population dynamics

STRENGTHS

- Great yielding hybrid for grain or silage
- Good producer for digestible grain
- Excellent root package contributes to enhanced stress tolerance
- Very competitive nutritional qualities delivering top shelf forage

MANAGEMENT TIPS

- Works well both north and south of zone
- Good disease tolerance for reduced tillage operations and corn followed by corn
- Excellent stalk strength for grain harvest

STRENGTHS

- This hybrid handles heat and drought stress very well
- Tall, showy hybrid with good stay-green
- Features Agrisure® Viptera® 3111 trait, which greatly limits above-ground insect feeding in southern environments

MANAGEMENT TIPS

- Best utilized in southern and western environments
- Use caution in areas prone to leaf disease
- Harvest at optimum moisture to maximize feeding quality
- In western environments, plant will stay green late in the growing

STRENGTHS

- Strong agronomics paired with great digestibility
- Good root and stalk strength for all soil types
- Medium-Tall plant with silage appeal

MANAGEMENT TIPS

- Recommended for corn on corn
- Works well in delayed harvest situations
- Works across varying soil types

KYLE VOSBURGH AGRONOMIC ANSWERS: YOUTUBE

Join Kyle Vosburgh of the Masters Choice Research and Development team on our YouTube channel for helpful information on agronomy, hybrid selection and trouble shooting problems in the field. Whether scouting for pests, disease or just looking for information on what hybrids to plant, Kyle is our residential agronomic specialist and more than happy to share information with our followers.



MC6580

115 DAYS R.M.

FLOURY SPECTRUM



AVAILABLE AS:

- MC6580 (ORG.)**
- MC6580 (CONV.)**
- MCT6581 (GT)**
- MCT6583 (3000GT)**

Silage Yield	9	Emergence	8
Milk Per Ton	9	Plant Height	M-T
Sugars	8	Ear Height	M-H
Fiber Digestibility	8	Ear Flex	SEMI-FLEX
Grain Yield	8	Stalk Strength	7
Test Weight	6	Root Strength	9
Dry Down	9	Disease Tolerance	9
Starch Digestibility	8	Drought Tolerance	8

Planting Pop: 28K - 34K

MC590

116 DAYS R.M.

FLOURY SPECTRUM



AVAILABLE AS:

- MC590 (CONV.)**

Silage Yield	8	Emergence	8
Milk Per Ton	9	Plant Height	T
Sugars	9	Ear Height	M-H
Fiber Digestibility	10	Ear Flex	FLEX
Grain Yield	8	Stalk Strength	8
Test Weight	6	Root Strength	9
Dry Down	7	Disease Tolerance	7
Starch Digestibility	9	Drought Tolerance	9

Planting Pop: 26K - 32K

MC6730

117 DAYS R.M.

FLOURY SPECTRUM



AVAILABLE AS:

- MC6730 (CONV.)**
- MCT6731 (GT)**
- MCT6733 (3000GT)**

Silage Yield	8	Emergence	8
Milk Per Ton	10	Plant Height	M-T
Sugars	8	Ear Height	M
Fiber Digestibility	9	Ear Flex	SEMI-FLEX
Grain Yield	8	Stalk Strength	8
Test Weight	6	Root Strength	7
Dry Down	8	Disease Tolerance	9
Starch Digestibility	8	Drought Tolerance	8

Planting Pop: 28K - 32K

MC6750

117 DAYS R.M.

FLOURY SPECTRUM



AVAILABLE AS:

- MC6750 (CONV.)**
- MCT6754 (VIP 3111)**

Silage Yield	8	Emergence	9
Milk Per Ton	9	Plant Height	T
Sugars	8	Ear Height	M-H
Fiber Digestibility	8	Ear Flex	SEMI-FLEX
Grain Yield	9	Stalk Strength	8
Test Weight	9	Root Strength	8
Dry Down	7	Disease Tolerance	9
Starch Digestibility	6	Drought Tolerance	8

Planting Pop: 28K - 34K

NOTES

STRENGTHS

- Wide area of adaptation, especially in the deep south
- Maintains yield and stature in the most stressed environments
- Performs well across varying soils and conditions
- Very good silage quality and starch availability
- Excellent silage yield potential

MANAGEMENT TIPS

- Excellent root system; handles sandy soils well
- Suited for a wide population range and positioning flexibility
- Excellent choice for high moisture grain or dry grain feeding

STRENGTHS

- Robust, high sugar with great tonnage and grain yield
- Exceptional root system aids heat and drought tolerance
- Widely adapted across cropping systems

MANAGEMENT TIPS

- Keep off poorly drained soils
- Responds favorably to late season fungicide treatments
- Great silage and grain choice for average to top-end environments

STRENGTHS

- Excellent stay green and a great health package
- Superior plant health gives hybrid great eye appeal
- True, full season hybrid that provides premium feeding quality

MANAGEMENT TIPS

- Excellent silage hybrid, but is also a great fit for high moisture corn and digestible grain
- Great fit for varying soil types

STRENGTHS

- Top of the line plant health, agronomics, and stress tolerance
- Great fiber characteristics for good whole plant digestibility
- Great adaptability to low and high yielding environments
- Excellent performance from the central Corn Belt to the deep south

MANAGEMENT TIPS

- Excellent quality when harvested for silage
- Great placement versatility, making it a great fit for varying soil types and environments
- This hybrid has a harder grain texture; harvest at 68% moisture for optimum silage quality

MC PODCAST OVER A YEAR OF EPISODES

At Masters Choice, we pride ourselves in not only developing hybrids with outstanding agronomic and nutritional characteristics, but also with being a resource to the farm. One way we are able to provide valuable information to farmers throughout the United States, and even the World, is through our podcast. We sit down weekly with Mark Kirk, of our Research and Development team, and guests, to discuss topics that affect the farm. Topics can range from “how to select your silage hybrids”, to “winter dairy management”, and “farm accounting”. We cover the bases on developing the strategies that help you have a more successful

Hybrid	Relative Maturity	GDUs		HYBRID AVAILABILITY OPTIONS						
		50% Silking GDUs	Black Layer GDUs	Organic	Conventional	Agrisure® GT	Agrisure Viptera® 3110	Agrisure® 3000GT	Agrisure Viptera® 3111	Agrisure Viptera® 3122 E-Z Refuge®
MCT2552	75	1055	1910				MCT2552			
MC3220	82	1160	2028	MC3220	MC3220	MCT3221		MCT3223		
MCT3393	83	1160	2030					MCT3393		
MC3890	88	1170	2150		MC3890	MCT3891				
MC4050	90	1200	2200	MC4050	MC4050				MCT4054	
MC4570	95	1235	2230		MC4570		MCT4572			
MC4630	96	1195	2280	MC4630	MC4630		MCT4632			
MC4880	98	1280	2350	MC4880	MC4880	MCT4881			MCT4884	
MC4930	99	1290	2360		MC4930			MCT4933	MCT4934	
MC5250	102	1280	2375	MC5250	MC5250					
MC5300	103	1280	2390	MC5300						
MC5370	103	1275	2410		MC5370	MCT5371				MCT5375
MC530	105	1280	2485		MC530					
MC5660	106	1310	2550		MC5660	MCT5661		MCT5663		
MC535	107	1320	2575	MC535	MC535	MCT535 GT				
MC5790	107	1320	2750	MC5790	MC5790					
MC6150	111	1310	2785	MC6150	MC6150	MCT6151		MCT6153		
MC6360	113	1305	2735		MC6360	MCT6361		MCT6363		MCT6365
MCT6434	114	1350	2750						MCT6434	
MC6550	115	1325	2820		MC6550		MCT6552			
MC6580	115	1330	2810	MC6580	MC6580	MCT6581		MCT6583		
MC590	116	1355	2840		MC590					
MC6730	117	1345	2850		MC6730	MCT6731		MCT6733		
MC6750	117	1345	2850		MC6750				MCT6754	

		PRIMARY FEED USE			SOIL DETAILS			CHARACTERISTICS		
Agrisure® 3220 E-Z Refuge®	Agrisure Duracade® 5222 E-Z Refuge®	Silage	High Moisture Corn	Dry Grain	Low Productivity Soils	Corn After Corn	No-Till & Early Planting Cool Soils	Ear Flex	Cob Color	Kernel Texture
		✓	✓	✓	✓	✓	✓	SEMI-FLEX	○ WHITE	MEDIUM
		✓	✓	✓	✓	✓	✓	SEMI-FLEX	● RED	MEDIUM
		✓	✓	✓	✓	✓	✓	SEMI-FLEX	○ LT. RED	SEMI-FLOURY
		✓	✓	✓	✓	✓	✓	SEMI-FLEX	● RED	MEDIUM
MCT4056	MCT4058	✓	✓	✓	✓	✓	✓	SEMI-FLEX	○ LT. RED	SEMI-FLOURY
		✓	✓	✓	✓	✓	✓	SEMI-FLEX	○ LT. RED	SEMI-FLOURY
		✓	✓	✓	✓	✓	✓	FLEX	○ WHITE	SEMI-FLOURY
		✓	✓	✓	✓	✓	✓	SEMI-FLEX	● RED	SEMI-FLOURY
	MCT4938	✓	✓	✓	✓	✓	✓	SEMI-FLEX	● RED	SEMI-FLOURY
		✓	✓	✓	✓	✓	✓	FLEX	○ WHITE	FLOURY
		✓	✓	✓	✓	✓	✓	FLEX	○ LT. RED	FLOURY
		✓	✓	✓	✓	✓	✓	SEMI-FLEX	○ LT. RED	SEMI-FLOURY
		✓	✓	✓	✓	✓	✓	FLEX	○ WHITE	SEMI-FLOURY
		✓	✓	✓	✓	✓	✓	FLEX	○ LT. RED	SEMI-FLOURY
		✓	✓	✓	✓	✓	✓	FLEX	○ WHITE	SEMI-FLOURY
		✓	✓	✓	✓	✓	✓	SEMI-FLEX	● RED	SEMI-FLOURY
		✓	✓	✓	✓	✓	✓	SEMI-FLEX	○ LT. RED	SEMI-FLOURY
		✓	✓	✓	✓	✓	✓	SEMI-FLEX	○ LT. RED	SEMI-FLOURY
		✓	✓	✓	✓	✓	✓	SEMI-FLEX	○ LT. RED	MEDIUM
		✓	✓	✓	✓	✓	✓	SEMI-FLEX	● RED	SEMI-FLOURY
		✓	✓	✓	✓	✓	✓	SEMI-FLEX	○ LT. RED	SEMI-FLOURY
		✓	✓	✓	✓	✓	✓	FLEX	○ LT. RED	SEMI-FLOURY
		✓	✓	✓	✓	✓	✓	SEMI-FLEX	● RED	SEMI-FLOURY
		✓	✓	✓	✓	✓	✓	SEMI-FLEX	● RED	HARD



“From our family to yours, we thank you and may God bless.”

Masters Choice is an independently owned and operated seed corn provider, headquartered in the Southern Illinois region. For over thirty years we have maintained a passionate dedication to hybrids of the highest quality. Be it for digestible grain or silage, only those hybrids with elite agronomics

and yield, combined with superior livestock digestibility, make it into a Masters Choice bag. The Crabtree family, owners for the last decade, are very pleased to continue the Masters Choice tradition of excellence and proud to offer a product with significant value to America’s farm families.





King's AgriSeeds Inc.

FEEDING YOUR FARM'S FUTURE.

(717).687.6224

info@kingsagriseeds.com

1828 Freedom Rd, Suite 101

Lancaster, PA 17601

Our hybrids break stereotypes that exist in the industry. In addition to advanced nutrition, we offer top yields and quality agronomics.



(866).444.1044

www.seedcorn.com

305 WEST VIENNA ST

ANNA, IL 62906