



IT Channel

PRODUCT CATALOGUE

2017



Get More Online!

partners.vertiv.com



IPP Program

Join the Vertiv™ Partner Program. Provide More Solutions. Gain Unparalleled Support. Maximize Your Profits.

VertivCo.com/partners/

Channel Product Selector

UPS, Accessories, PDU, Rack, Monitoring: use our tool to determine the best possible solution and share it with selected distributors. Available in 10 languages and as a mobile app.

<http://www.channelproductselector.com>

Tech Support

Always On! Our Commitment to your daily Business, provided by our World Wide Tech support available in 5 Languages (GB, ES, FR, IT, DE).

Liebert Technical Support:

Toll-free 00-80011554499 - Toll +39 02 98250222

liebert.upstech@@vertivco.com

Vertiv Avocent Customer Care:

support.Avocent@@vertivco.com

EMEA Channel Support

For any enquiries on Channel program or Channel sales, please contact:

emeapartnermarketing@vertivco.com

Grow your Business!

Your end user can't afford its critical infrastructure to go down. At Vertiv™, we have built our capabilities on delivering reliable facilities and IT Infrastructure optimisation solutions that assure Business-Critical Continuity.

What can Vertiv's portfolio bring to end users?

Optimisation of their critical infrastructure - we, as Vertiv, promise to **maximise the availability, capacity and efficiency of their critical infrastructure.**

We can provide the ideal and complete solution for their business: our product range brings together everything you need in order to have their business up and running at any moment, but at the same time have quicker and easier access to the infrastructure.

Vertiv provides hardware and software products that offer a complete solution for infrastructure management and, besides having all these products under one roof, we also have the right people you need: **IT experts, sales consultants and technical support teams** - an entire team focused on the challenges brought by your customer.

Therefore, if your client is looking to optimise their infrastructure by investing in one organisation, rest assured that Vertiv is a sound choice.



AC Power and Uninterruptible Power Supplies (UPS)

Vertiv™ delivers a full range of uninterruptible power supplies (UPS) and power distribution units (PDU), from individual data center solutions to integrated systems that keep network closets, computer rooms and data center infrastructure up and running.

This wide range of power capacities will bring you not only greater margins but also significant upselling opportunities.

AC Power Liebert® itON



Reliable Power Protection for Desktop Workstations 600-2000 VA

Key Benefits

- Automatic voltage regulator (AVR)
- Compact size
- Light weight
- Easy operation
- Overload protection and alarm
- Auto re-start with AC recovery
- Fast charging
- Cold start function
- Available in ratings from 400 VA up to 2000 VA
- USB port (for 1000 VA, 1500 VA, 2000 VA)
- Flexible output power sockets combination:
 - Schuko sockets (for 400 VA, 600 VA, 800 VA)
 - Schuko and IEC sockets (for 1000 VA, 1500 VA, 2000 VA).

Applications

- Desktop PCs
- Professional workstations
- Small routers, bridges and hubs
- Point-of-sale terminals
- PBXs
- Other sensitive electronics.



Technology:	Line interactive
Connections:	Output IEC C320-C13 and Schuko (check models)
Communications:	USB port for 1000-1500-2000VA ratings

Model	Power Rating	Runtime*	Outputs Outlets	Dimensions HxWxD	Weight	Warranty Extension +1Y
LI32111CT00	400VA - 240W	6 mins	2 x Schuko	142x101x279 mm	3.6 kg	-
LI32111CT00	600VA - 360W	6 mins	2 x Schuko	142x101x279 mm	4.2 kg	-
LI32121CT00	800VA - 480W	3 mins	2 x Schuko	142x101x279 mm	4.9 kg	-
LI32131CT20	1000VA - 600W	6 mins	2 x Schuko + 2 x IEC C13	164x146x341 mm	8.0 kg	-
LI32141CT20	1500VA - 900W	5 mins	3 x Schuko + 3 x IEC C13	205x146x391 mm	11.1 kg	-
LI32151CT20	2000VA - 1200W	3 mins	3 x Schuko + 3 x IEC C13	205x146x391 mm	11.5 kg	-

* Runtime 50% load

AC Power Liebert® GXT MT +



Compact Tower UPS for High Performance Power Protection 1 – 3 kVA

Key Benefits

- Double conversion on-line technology
- Compact tower design
- 0.8 output power factor
- Ultra wide input voltage range
- Automatic frequency detection
- High input power factor & low THDi
- Emergency power off (EPO)
- Energy saving mode (ECO) for high efficiency
- LCD display for operational convenience and status/fault information
- Multiple AC output interfaces via Schuko and IEC standard sockets
- Multiple communications options available through USB/RS232, and optional via dry contacts and SNMP.

Applications

- VoIP equipment
- Small office networks
- Computer rooms
- Process automation equipment
- Network storage devices.

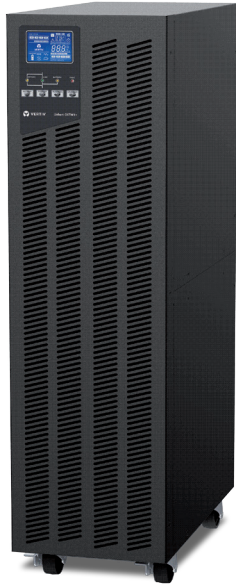


Technology: Online Double Conversion
Connections: IEC input and IEC+Schuko plugs (output power terminals only for 3kVA)
Options: RS232, USB, or optional SNMP/WEB or Relay Card

Model	Power Rating	Runtime*	Outputs Outlets	Dimensions HxWxD	Weight	Warranty Extension +1Y
LI34101CT32	1000VA - 800W	5 mins	3xIEC C13+ 1 x Schuko	223x145x282 mm	9.7 kg	-
LI34111CT32	2000VA - 1600W	5 mins	3xIEC C13+ 1 x Schuko	238x145x397 mm	17.3 kg	-
LI34121CT32	3000VA - 2400W	5 mins	3xIEC C13+ 2 x Schuko +Terminals	336x190x421mm	27.5 kg	-

* Runtime 75% load

AC Power
Liebert® GXT MT +



Compact Tower UPS for High Performance Power Protection
6 - 10 kVA

Key Benefits

- Double conversion on-line technology
- 0.8 output power factor
- Multiple communication options (USB, RS232)
- Network and volt-free contacts card (optional)
- LCD display and intuitive synoptic on the front panel for easy reading of UPS status
- Wide input voltage range
- Input circuit breaker
- Maintenance bypass
- Automatic frequency detection
- Minimized installation time and costs
- Small and compact footprint and size.

Applications

- VoIP equipment
- Small office networks
- Computer rooms
- Process automation equipment
- Network storage devices.



Technology: Online Double Conversion
Connections: Terminal block (input and output)
Communications: RS232, USB, optional SNMP/WEB or Relay Card
Options: Communication cards

Model	Power Rating	Runtime*	Outputs Outlets	Dimensions HxWxD	Weight	Warranty Extension +1Y
LI34141CT32	6000VA - 4800W	5,6 mins	Terminals	688x190x369 mm	72 kg	-
LI34151CT32	10000VA - 8000W	4 mins	Terminals	688x190x442 mm	82 kg	-

* Runtime 75% load

AC Power Liebert® PSP 3G



Best-Value Power Protection for PCs and Peripherals 500-650VA

Key Benefits

- 3 battery-backed UPS outlets and one surge protection-only outlet differentiated by color
- USB port, Vertiv™ MultiLink™ Software shutdown software, and USB cable
- User replaceable batteries
- Up to 4 minutes of battery backup time at full load
- Protects against lightning, spikes and surges
- Full sequenced battery testing to ensure batteries are available when needed
- Advance early warning of UPS shutdown
- RJ-45 port for data line surge protection.

Applications

- Professional workstations
- Small routers and bridges
- Point-of-sale terminals
- Other sensitive electronics.



Technology: Offline, VFD according to IEC62040-3
Connections: IEC plugs (input and output)
Communications: USB (all units)

Model	Power Rating	Runtime*	Outputs Outlets	Dimensions HxWxD	Weight	Warranty Extension +1Y
PSP500MT3-230U	500VA - 300W	11 mins	3+1	215x87x251 mm	3.9 kg	PF1UR-MU-00
PSP650MT3-230U	650VA - 390W	8 mins	3+1	215x87x251 mm	3.9 kg	PF1UR-MU-01

* Runtime 50% load

**AC Power
Liebert® PSA**

**Performance Power Protection For PC And Office Equipment
500-650-1000-1500VA**

Key Benefits

- Available in four sizes: 500, 650, 1000 and 1500VA; 120VAC or 230VAC
- 3 to 6 battery-backed UPS sockets, depending on model size
- One to two surge-only sockets, differentiated by color
- USB communications/shutdown software and cable included
- User replaceable batteries
- Up to 5 minutes of battery backup time at full load
- Full sequenced battery testing to ensure batteries are available when needed
- Advance early warning of UPS shutdown
- RJ-45 port for data line surge protection.

Applications

- Professional Desktop PC
- Professional Workstations
- Small Routers, Bridges & Hubs
- Point-of-Sale Terminals
- Other Sensitive Electronics.



Technology: Line Interactive, VI according to IEC62040-3
Connections: IEC plugs (input and output)
Communications: USB port (all units)

Model	Power Rating	Runtime*	Outputs Outlets	Dimensions HxWxD	Weight	Warranty Extension +1Y
PSA500MT3-230U	500VA - 300W	12 mins	3+1	171x95x356 mm	5.4 kg	PF1YR-MU-01
PSA650MT3-230U	650VA - 390W	8.5 mins	3+1	171x95x356 mm	5.9 kg	PF1YR-MU-01
PSA1000MT3-230U	1000VA - 600W	12 mins	6+2	234x147x360 mm	9.5 kg	PF1YR-MU-02
PSA1500MT3-230U	1500VA - 900W	10.5 mins	6+2	234x147x360 mm	11.6 kg	PF1YR-MU-04

* Runtime 50% load

AC Power Liebert® PSI



High Performance Rack & Tower UPS For Network Power Protection

750-1000-1500-2200-3000VA

Key Benefits

- Up to 9 battery-backed sockets
- Configurable input voltage window
- Rotatable Display Panel
- Automatic Frequency Sensing
- Multiple Communications Options (USB, SNMP and Contact Closure)
- Data line surge protection
- Advance early warning of UPS system status
- Full sequenced battery testing
- Lightning and surge protection
- Remote emergency power off
- User replaceable hot swappable batteries
- Ample battery backup time at full load when utility fails, for an orderly shutdown of connected equipment.

Applications

- PC
- Network workstations
- Servers
- Network closets
- Large network peripherals.
- VoIP.

Don't forget to check your Upsell Opportunities!

Do your Clients need any complementary product?
See: **Vertiv Avocent® Desktop & Extension Solutions**



Technology:	Line Interactive, VI according to IEC62040-3
Connections:	IEC plugs (input and output)
Communications:	USB port (all units); SNMP/WEB optional
Options:	Battery Cabinets (only for XR models), Communication cards, Rack (included) mount kits

Model	Power Rating	Runtime*	Outputs Outlets	Dimensions HxWxD	Weight	Warranty Extension +1Y
PS750RT3-230	750VA - 675W	11 mins	8	88(2U)x440x412 mm	15 kg	PF1YR-MU-03
PS1000RT3-230	1000VA - 900W	12 mins	8	88(2U)x440x412 mm	19.4 kg	PF1YR-MU-03
PS1500RT3-230	1500VA - 1350W	9 mins	8	88(2U)x440x412 mm	20.9 kg	PF1YR-MU-04
PS2200RT3-230	2200VA - 1980W	11 mins	8 + 1 C19	88(2U)x440x657 mm	33.8 kg	PF1YR-MU-05
PS3000RT3-230	3000VA - 2700W	9 mins	8 + 1 C19	88(2U)x440x657 mm	37.2 kg	PF1YR-MU-05
PS1000RT3-230XR	1000VA - 900W	15 mins scal	6	88(2U)x440x490.5 mm	25 kg	PF1YR-MU-03
PS1500RT3-230XR	1500VA - 1350W	13 mins scal	6	88(2U)x440x490.5 mm	28 kg	PF1YR-MU-04
PS2200RT3-230XR	2200VA - 1980W	14 mins scal	6 + 1 C19	88(2U)x440x700.5 mm	42 kg	PF1YR-MU-05
PS3000RT3-230XR	3000VA - 2700W	13 mins scal	6 + 1 C19	88(2U)x440x700.5 mm	46 kg	PF1YR-MU-05
PSRT3-24VBXR - Battery Cabinet for 1000VA and 1500VA				88(2U)x440x490.5 mm	29 kg	-
PSRT3-48VBXR - Battery Cabinet for 2200VA and 3000VA				88(2U)x440x700.5 mm	29.1 kg	-
IS-WEBRT3				-	-	-

* Runtime 50% load

AC Power
Liebert® GXT4™

Intelligent, Reliable UPS Protection

700-1000-1500-2000-3000 VA

Key Benefits

For robust UPS protection of up to 3 kVA, the Liebert GXT4 provides industry-leading features in a compact 2U design:

- Rotatable multi-language LCD display
- ECO mode option allows improved energy efficiency
- 0.9 output power factor to maximize power availability
- On-line design means zero transfer time. If utility power fails, your critical load will be supported by a seamless flow of power
- Easy serviceability with replaceable, hot-swappable batteries
- Controllable power to multiple devices via two independently programmable pairs of sockets
- Optional Liebert MicroPOD™ allows for maintenance
- Compatible with Vertiv monitoring suite, racks and rack PDUs
- Intelligent fan operation
- Rack and tower mounting flexibility.

Applications

- Mission critical applications and systems
- Network workstations
- Servers
- Network closets.



Don't forget to check your Upsell Opportunities!

Do your Clients need any complementary product?
See: **Vertiv Avocent® Remote Management Solutions**



UL/cUL
in selected ratings

Technology:	Online Double Conversion
Connections:	IEC plugs (input and output)
Communications:	SNMP/WEB, Modbus and Relay Card optional
Options:	Battery Cabinets, Communication cards, Rack mount kits, Maintenance Bypass, Vertiv MultiLink Network Shutdown Licenses, 1 year warranty extension (selected countries)

Model	Power Rating	Outputs Outlets	Dimensions HxWxD	Weight
GXT4-700RT230E	700VA -630W	(6) IEC320-C13	85x430x408	18.2 Kg
GXT4-1000RT230E	1000VA-900W	(6) IEC320-C13	85x430x408	18.2 Kg
GXT4-1500RT230E	1500VA-1350W	(6) IEC320-C13	85x430x497	23.2 Kg
GXT4-2000RT230E	2000VA-1800W	(6) IEC320-C13	85x430x497	25.5 Kg
GXT4-3000RT230E	3000VA-2700W	(6) IEC320-C13 (1) IEC320-C19	85x430x602	32.4 Kg
GXT4-48VBATTE			85x430x497	32 Kg
GXT4-72VBATTE			85x430x602	42 Kg

AC Power Liebert® GXT4™



Intelligent, Reliable UPS Protection

5000-6000-10000 VA

Key Benefits

- Rotatable multi-language LCD display panel
- ECO mode for increased efficiency
- Up to 0.9 output power factor to maximize power availability
- Compact 5Us or 6Us height and short depth (<600 mm)
- Frequency conversion capability
- Rack & tower mounting flexibility
- User replaceable hot-swappable internal batteries
- Extended backup time with additional battery cabinets
- Emergency power-off (EPO)
- Internal automatic and manual bypass
- Self-diagnostics
- 10 kVA parallel/redundant up to 2+1
- Offers a variety of communication options, providing flexible monitoring, control capabilities and preventive maintenance.
- Intelligent battery management
- Wider input voltage minimizes battery use
- Battery cutoff voltage to prevent from over discharge of batteries and to prolong battery life.

Applications

- LAN and WAN servers
- Network equipment
- IP telephony deployments
- Office telecommunication systems
- Test and diagnostic equipment
- Finance applications.

Don't forget to check your Upsell Opportunities!

Do your Clients need any complementary product?
See: **Vertiv Avocent® Remote Management Solutions**



Technology:	Online Double Conversion
Connections:	Terminal block (input and output) + IEC plugs (output only)
Communications:	SNMP/WEB, Modbus and Relay Card optional, Vertiv™ LIFE™ Services compatible
Options:	Battery Cabinets, Communication cards, Rack mount kits, Vertiv MultiLink Network Shutdown Agent Licenses

Model	Power Rating	Outputs Outlets	Dimensions HxWxD	Weight
GXT4-5000RT230E	5000VA-4000W	6 x IEC320-C13 + 2 x IEC320-C19 + hardwired on PD2-CE6HDWRDMBS standard power distribution	217X430X574	60 Kg
GXT4-6000RT230E	6000VA-4800W	6 x IEC320-C13 + 2 x IEC320-C19 + hardwired on PD2-CE6HDWRDMBS standard power distribution	217X430X574	60 Kg
GXT4-10KRT230E	10000VA-9000W	4 x IEC320-C13 + 4 x IEC320-C19 + hardwired on PD2-CE10HWRDMBS standard power distribution	261X430X581	70 Kg
GXT4-240VBATTE			173X430X581	65 Kg

AC Power
Liebert® GXT3

Reliable On-Line UPS Protection In A Compact Package
GXT3-10000T230, 10000T220



Key Benefits

- 0.9 Power Factor
- LCD display in multiple languages
- Automatic frequency detection
- User replaceable hot-swappable internal batteries
- Additional runtime with additional battery cabinets
- Vertiv™ IntelliSlot™ communications port
- Includes Windows-based configuration program
- Built-in USB communications for use with Vertiv MultiLink Automated Shutdown Software
- Built-in closure signals
- Emergency Power Off (EPO)
- Paralleable up to 2+1 units
- Wider input voltage window minimises battery use
- Internal automatic and manual bypass (integrated)
- Self-diagnostics
- Standard two-year replacement warranty
- Compact footprint
- Shields batteries from heat generating electronic components
- Battery cut-off voltage to prevent from overdischarge of batteries.

Applications

- LAN & WAN Servers
- Network Equipment
- IP Telephony Deployments
- Office Telecommunications systems
- SDN & frame relay applications
- Test and Diagnostic Equipment
- Banks
- Micro Processor-controlled Equipment.

Don't forget to check your Upsell Opportunities!

Do your Clients need any complementary product?
See: **Vertiv Avocent® Remote Management Solutions**



Technology: Online Double Conversion, VFI SS 111 (IEC62040-3)
Connections: Terminal block (input and output)
Communications: SNMP/WEB, Modbus and Relay Card optional
Options: Battery Cabinets, Communication cards, Rack mount kits

Model	Power Rating	Runtime*	Outputs Outlets	Dimensions WxDxH	Weight	Warranty Extension +1Y
GXT3-10000T230	10000VA - 9000W	3 mins	terminal block	300x675x800 mm	105 kg	-
GXT3-10000T220	10000VA - 9000W	3 mins	terminal block	300x675x800 mm	140 kg	-

GXT3-240TBATT CE - Extended Battery Cabinet
for GXT3-10000T230, GXT3-10000T220

300x675x800 mm

110 kg

-

* Runtime 100% load

AC Power Liebert® APS



Single-Phase Modular UPS that provides internal redundancy and the ability to add power or extend backup run-time as needed

5-20 kVA

Key Benefits

- 5 kVA / 4.5 kW single phase output power modules
- Site configurable as single phase or three phase input
- Scalable up to 20 kVA+10 kVA redundancy
- Fully rated at 40°C
- Stand alone or rack mountable
- Hot-Swappable power and battery modules
- Intelligent battery modules with automatic disconnection for anomalous events
- Double conversion efficiency: 92%
- 1.8 A Charging Current per module added plus 10A with optional charger module
- Five-minute back up time with equal number of power modules and battery strings
- Integrated autonomy up to 1h @ 4.5 kW
- Detachable user interface and control panel
- The highest efficiency in its class, delivering the lowest TCO
- Vertiv LIFE Services ensures rapid resolution of potential issues
- The widest selection of output distribution options.

Applications

- Network Equipment
- IP Telephony Deployments
- Small to Medium Sized Computer Rooms
- Virtualized Server Environments
- Scalable Storage Systems.



Technology:

Online Double Conversion, VFI SS 111 (IEC62040-3)

Connections:

Hardwired input & output

Communications:

SNMP/WEB, Modbus Card and Relay card optional

Options:

Battery Cabinets and Power Output Distribution

AC Power Liebert® APS

Power (KVA)	Part Number	Description	Runtime *	Weight
5	AS2A0NNNMNNX000	Liebert APS 16-Bay Frame 1-Phase 5kVA no redundancy without Battery Modules	0	154 Kg
5	AS2A0NCLMNNX000	Liebert APS 16-Bay Frame 1-Phase 5kVA no redundancy with 1 Battery Module 10Y	6	188 Kg
5	AS2A0NCMMNNX000	Liebert APS 16-Bay Frame 1-Phase 5kVA no redundancy with 2 Battery Module 10Y	17	222 Kg
5	AS2A0NCNMNNX000	Liebert APS 16-Bay Frame 1-Phase 5kVA no redundancy with 3 Battery Module 10Y	27	256 Kg
5	AS2A1NCPMNNX000	Liebert APS 16-Bay Frame 1-Phase 5kVA no redundancy with 4 Battery Module 10Y and extra charger	39	291 Kg
10	AS2B0NNNMNNX000	Liebert APS 16-Bay Frame 1-Phase 10kVA no redundancy without Battery Modules	0	163 Kg
10	AS2B0NCMMNNX000	Liebert APS 16-Bay Frame 1-Phase 10kVA no redundancy with 2 Battery Modules 10Y	6	231 Kg
10	AS2B0NCNMNNX000	Liebert APS 16-Bay Frame 1-Phase 10kVA no redundancy with 3 Battery Modules 10Y	11	266 Kg
10	AS2B0NCPMNNX000	Liebert APS 16-Bay Frame 1-Phase 10kVA no redundancy with 4 Battery Modules 10Y	17	300 Kg
10	AS2B0NCRMNNX000	Liebert APS 16-Bay Frame 1-Phase 10kVA no redundancy with 6 Battery Modules 10Y	27	368 Kg
15	AS2C0NNNMNNX000	Liebert APS 16-Bay Frame 1-Phase 15kVA no redundancy without Battery Modules	0	172 kg
15	AS2C0NCNMNNX000	Liebert APS 16-Bay Frame 1-Phase 15kVA no redundancy with 3 Battery Modules 10Y	6	275 Kg
15	AS2C0NCQMNNX000	Liebert APS 16-Bay Frame 1-Phase 15kVA no redundancy with 5 Battery Modules 10Y	13	343 Kg
15	AS2C0NCRMNNX000	Liebert APS 16-Bay Frame 1-Phase 15kVA no redundancy with 5 Battery Modules 10Y	17	377 Kg
20	AS2D0NNNMNNX000	Liebert APS 16-Bay Frame 1-Phase 20kVA no redundancy without Battery Modules	0	181 Kg
20	AS2D0NCPMNNX000	Liebert APS 16-Bay Frame 1-Phase 20kVA no redundancy with 4 Battery Modules 10Y	6	318 Kg
20	AS2D0NCRMNNX000	Liebert APS 16-Bay Frame 1-Phase 20kVA no redundancy with 6 Battery Modules 10Y	11	386 Kg

* Runtime @0.8PF

APS OPTIONS

Part Number	Description	Weight
APS5KPWRMOD2	PM2 - 1PH Power Module - Individually Packaged	9 Kg
F0214972	Empty Battery module	2 Kg
APSBATMODCL	Battery Module - 1 String - CSB HRL 1234W FR - Individually Packaged	34 Kg
APSCHRGRMOD1	Charger Module - 1PH - Individually Packaged	7 Kg
AS7EBC2CCLBX000	14 Bay EBC - 2 battery strings with Vertiv Intellislot Battery Card and cables	145 Kg
AS7EBC6CCLBX000	14 Bay EBC - 6 battery strings with Vertiv Intellislot Battery Card and cables	282 Kg
APSRACKKIT	APS Rackmount Kit	11 Kg
APSFLRBRKT	APS Seismic Floor Bracket	4 Kg
ASMBCR2MUNNX000	APS MBC - Rackmount, 20kVA, 125A rated	20 Kg
PD2-200	POD with (4) IEC320-C19, (4) IEC320-C13 output sockets	3 Kg
PD2-204	POD with (2) IEC320-32A, (4) IEC320-C13 output sockets	3 Kg
APSLRTCONNKIT	APS LRT Connector Kit	0,5 Kg
APSECCBL1M	APS EBC Cable 1 meter	-
APSECCBL5M	APS EBC Cable 5 meters	-
NXAOUFXBTS	BATTERY TEMPERATURE MONITORING KIT	-

AC Power Liebert® NXC



Compact Reliable Power

10-15-20-30-40 kVA

Key Benefits

- 0.9 output power factor
- Double conversion efficiency up to 95%
- Eco mode efficiency up to 98%
- Input current total harmonic distortion (THDi) < 4%
- Up to 6kW/12A battery charger
- Integrated manual bypass
- Input/output and bypass circuit breakers/switches
- Integrated parallel load bus and synchronization port (LBS).

Applications

- Wiring Closets
- Server Rooms
- Medium Data Center
- Financial Institutions
- Telecom Applications.



Technology: Online Double Conversion, VFI SS 111 (IEC62040-3)
Connections: Hardwired input & output
Communications: SNMP/WEB, Modbus Card and Relay card optional
Options: Isolation Transformer, Battery Cabinets

Power (KVA/Kw)	Part Number	Power Rating	Phases (Input/Output)	Runtime*	Dimensions (H x W x D - mm)	Weight
10 / 9	LI60101A0000B00	UPS NXC 10kVA no battery + web card	3 / 3 or 1	0	1240 x 500 x 860	115 Kg
10 / 9	LI60101B0010B00	UPS NXC 10kVA + internal battery (5 years:1x32x9Ah) + web card	3 / 3 or 1	11	1240 x 500 x 860	215 Kg
15 / 13,5	LI60151A0000B00	UPS NXC 15kVA no battery + web card	3 / 3 or 1	0	1240 x 500 x 860	115 Kg
15 / 13,5	LI60151B0010B00	UPS NXC 15kVA + internal battery (5 years:1x32x9Ah) + web card	3 / 3 or 1	6	1240 x 500 x 860	215 Kg
15 / 13,5	LI60151B0090B00	UPS NXC 15kVA + internal battery (5 years:1x40x9Ah) + web card	3 / 3 or 1	8	1240 x 500 x 860	250 Kg
20 / 18	LI60201A0000B00	UPS NXC 20KVA no battery + web card	3 / 3 or 1	0	1240 x 500 x 860	115 Kg
20 / 18	LI60201B0090B00	UPS NXC 20kVA + internal battery (5 years:1x40x9Ah) + web card	3 / 3 or 1	5	1240 x 500 x 860	250 Kg
20 / 18	LI60201B0020B00	UPS NXC 20kVA + internal battery (5 years:2x32x9Ah) + web card	3 / 3 or 1	11	1240 x 500 x 860	315 Kg
30 / 27	LI60301A0001B00	UPS NXC 30kVA no battery + web card	3 / 3	0	1600 x 600 x 850	210 Kg
30 / 27	LI60301B0051B00	UPS NXC 30kVA + internal battery (5 years:1X32X34ah) + web card	3 / 3	15	1600 x 600 x 850	410 Kg
30 / 27	LI60301B0020B00	UPS NXC 30kVA + internal battery (5 years:2x32x9Ah) + web card	3 / 3	6	1600 x 600 x 850	410 Kg
30 / 27	LI60301B00A0B00	UPS NXC 30kVA + internal battery (5 years:2x40x9Ah) + web card	3 / 3	8	1600 x 600 x 850	470 Kg
40 / 36	LI60401A0001B00	UPS NXC 40kVA no battery + web card	3 / 3	0	1600 x 600 x 850	210 Kg
40 / 36	LI60401B00A0B00	UPS NXC 40kVA + internal battery (5 years:2x40x9Ah) + web card	3 / 3	5	1600 x 600 x 850	470 Kg
40 / 36	LI60401B0051B00	UPS NXC 40kVA + internal battery (5 years:1x32x34Ah) + web card	3 / 3	11	1600 x 600 x 850	600 Kg

* Runtime with internal batteries

AC Power
Liebert® APM

The Optimum Solution For In-The-Row Applications
30-150 kVA



Key Benefits

- Rack form factor
- Scalable from 30 to 150kW
- Hot Swappable
- Unitary output power factor
- Double conversion efficiency: 96%
- 4.5 kW battery charger per power per module (11A)
- Internal Battery
- High Power Density
- Parallelable up to 4 racks
- Integrated load bus synchronization (LBS)
- Full set of communications options (SNMP/web, Modbus and Relay via Vertiv™ Intellislot card)
- Vertiv LIFE™ Services ready.

Applications

- Server Rooms
- Small to Medium Data Center
- Financial Institutions
- Telecom Applications.

Don't forget to check your Upsell Opportunities!
Do your Clients need any complementary product?
See: **Vertiv Avocent® Remote Management Solutions**
Vertiv Avocent DSView™ Management Software
Vertiv Avocent Data Center Planner



Technology: Online Double Conversion, VFI SS 111 (IEC62040-3)
Connections: Hardwired input & output
Communications: SNMP/WEB, Modbus Card and Relay card optional
Options: Battery Cabinets & Battery Circuit Breaker

Part Number	Description
APM030-00	LIEBERT APM with 30kW installed, no redundancy, scalable up to 150kW and web-card
APM030-D0	LIEBERT APM with 30kW installed, no redundancy, scalable up to 150kW, 11' of backup time and web-card
APM030-01	LIEBERT APM with 30kW installed +30kW redundant, scalable up to 120kW and web-card
APM030-D1	LIEBERT APM with 30kW installed +30kW redundant, scalable up to 120kW with, 11' of backup time and web-card
APM030-10	LIEBERT APM with 30kW installed, no redundancy, scalable up to 90kW and web-card
APM030-E0	LIEBERT APM with 30kW installed, no redundancy, scalable up to 90kW, 24' of backup time and web-card
APM030-11	LIEBERT APM with 30kW installed +30kW redundant, scalable up to 60kW
APM030-E1	LIEBERT APM with 30kW installed +30kW redundant, scalable up to 60kW, with 24' of backup time and web-card
APM060-00	LIEBERT APM with 60kW installed, no redundancy, scalable up to 150kW and web-card
APM060-E0	LIEBERT APM with 60kW installed, no redundancy, scalable up to 150kW with 6' of backup time and web-card
APM060-01	LIEBERT APM with 60kW installed +30kW redundant, scalable up to 120kW and web-card
APM060-E1	LIEBERT APM with 60kW installed +30kW redundant, scalable up to 120kW with 6' of backup time web-card
APM060-10	LIEBERT APM with 60kW installed, no redundancy, scalable up to 90kW, and web-card
APM060-F0	LIEBERT APM with 60kW installed, no redundancy, scalable up to 90kW, with 9' of backup time and web-card
APM060-11	LIEBERT APM with 60kW installed +30kW redundant, scalable up to 60kW
APM060-F1	LIEBERT APM with 60kW installed +30kW redundant, scalable up to 60kW with 9' of backup time and web-card
APM090-00	LIEBERT APM with 90kW installed, no redundancy, scalable up to 150kW and web-card
APM090-G0	LIEBERT APM with 90kW installed, no redundancy, scalable up to 150kW, external battery cabinet 10' runtime and web-card
APM090-01	LIEBERT APM with 90kW installed +30kW redundant, scalable up to 120kW and web-card
APM090-G1	LIEBERT APM with 90kW installed +30kW red., scalable up to 120kW, external battery cabinet 10' runtime and web-card
APM090-10	LIEBERT APM with 90kW installed, no redundancy, scalable up to 90kW and web-card
APM090-F0	LIEBERT APM with 90kW installed, no redundancy, scalable up to 90kW with 5' of backup time and web-card
APM120-00	LIEBERT APM with 120kW installed, no redundancy, scalable up to 150kW and web-card
APM120-H0	LIEBERT APM with 120kW installed, no redundancy, scalable up to 150kW, external battery cabinet 10' runtime and web-card
APM120-01	LIEBERT APM with 120kW installed + 30kW redundant, scalable up to 120kW and web-card
APM120-H1	LIEBERT APM with 120kW installed + 30kW red., scalable up to 120kW external battery cabinet 10' runtime and web-card
APM150-00	LIEBERT APM with 150kW installed, no redundancy, scalable up to 150kW and web-card
APM150-H0	LIEBERT APM with 150kW installed, no redundancy, scalable up to 150kW external battery cabinet 10' runtime and web-card

Racks & Integrated Solutions

Optimising technology and performance needs for IT applications. Our integrated platform provides standard and specific, custom solutions.

Our family of racks enables cable management, power distribution, ventilation or sophisticated precision air conditioning solutions. Each of our products meets the strictest standards for durability and safety. Contact the Vertiv™ team for modular designs for data centers of any type or dimensions.

Racks & Integrated Cabinets
Vertiv™ Knürr®
DCM Heavy-Duty Rack



19” Rack Platform for Data Center, Telecommunication and Network Technology

Key Benefits

- Lighter aluminum frame; can be taken apart
- Easier transport because lighter and take-apart
- Tilt restraint integration (optional)
- Quick and easy assembly and disassembly:
- More space and safety with integrated tilt restraint (optional)
- Ideally integrated into the rack
- Maximum safety against tilt over (optional)
- 42 + 6 usable HU - Width 800 mm / Height 2000 mm
- More space due to six additional vertical HU (48 usable in the rack; width 800mm/ height 2000 mm)
- More air with the biggest possible perforation; 83 % perforation in flow cross-section
- Safe and stable
- Earthquake-tested Vertiv™ Knürr® DCM Heavy-Duty Rack version available on request.

Applications

- Data centers
- Network closets
- Telecommunication equipment.

Don't forget to check your Upsell Opportunities!
 Do your Clients need any complementary product?
 See: **Vertiv Avocent® Remote Management Solutions**
Vertiv Avocent DSView™ Management Software
Vertiv Avocent Data Center Planner

Technology:	IEC standard 60297
Communications:	Optional rack monitoring unit available

Racks & Integrated Cabinets Vertiv™ Knürr® INR Network Rack



New modular rack enclosure optimized for fast assembly or disassembly, easy installation and simplified cabling.

Key Benefits

- **Tool-less Installation** - No need for tools when installing Vertiv MPH2 Rack PDU and vertical side panels
- **Flexible Cabling** - Frameless architecture eliminates the need for cable threading allowing for optimal cable management
- **Easy Access** - Vertically separated side panels provide - only for depth 1000 mm - easy handling and fast, simple access to installed equipment
- **Accessories** - Brush strip fitting break-outs, Stationary Plinth (height: 100 mm), Ventilation Unit, Rack PDUs
- **Dimensions:** - 800 x 2000 x 800 mm
- 800 x 2000 x 1000 mm
- 800 x 2200 x 800 mm
- 800 x 2200 x 1000 mm
- **Assembled or flat packed** - fast assembled or disassembled in 30 minutes
- **Loading Capacity** - Knürr INR Network Rack features a stable 19" frame that can securely carry loads up to 550 kg.

Applications

- Network closets
- Telecommunications equipment
- Office Telecommunications systems.

Don't forget to check your Upsell Opportunities!
Do your Clients need any complementary product?
See: **Vertiv Avocent® Remote Management Solutions**
Vertiv Avocent DSView™ Management Software
Vertiv Avocent Data Center Planner

Technology: IEC standard 60297
Communications: Optional rack monitoring unit available

Part Number	Description
011500041006	Knürr INR Network Rack (LAN) flat pack, 2000 mm (42U) high, 800 mm wide, 800 mm depth, 550 kg loadrating, 2 x 19" frames, 4 x EIA rail hole grid servertype, 4 x depth brace, 8 x 19" brackets, 2 x side panel 800 mm wide, glass door front, sheet door rear, top cover with cable entry and cut outs for fan unit can be broken out, bottom open, assembly material. Color light grey RAL 7035.
011500041007	Knürr INR Network Rack (LAN) flat pack, 2000 mm (42U) high, 800 mm wide, 1000 mm depth, 550 kg loadrating, 2 x 19" frames, 4 x EIA rail hole grid servertype, 4 x depth brace, 8 x 19" brackets, 2 x side panel 800 mm wide, glass door front, sheet door rear, top cover with cable entry and cut outs for fan unit can be broken out, bottom open, assembly material. Color light grey RAL 7035.
011500041011	Knürr INR Network Rack (LAN) flat pack, 2200 mm (47U) high, 800 mm wide, 800 mm depth, 550 kg loadrating, 2 x 19" frames, 4 x EIA rail hole grid servertype, 4 x depth brace, 8 x 19" brackets, 2 x side panel 800 mm wide, glass door front, sheet door rear, top cover with cable entry and cut outs for fan unit can be broken out, bottom open, assembly material. Color light grey RAL 7035.
011500041012	Knürr INR Network Rack (LAN) flat pack, 2200 mm (47U) high, 800 mm wide, 1000 mm depth, 550 kg loadrating, 2 x 19" frames, 4 x EIA rail hole grid servertype, 4 x depth brace, 8 x 19" brackets, 2 x side panel 800 mm wide, glass door front, sheet door rear, top cover with cable entry and cut outs for fan unit can be broken out, bottom open, assembly material. Color light grey RAL 7035.
011501041006	Knürr INR Network Rack (LAN) assembled, 2000 mm (42U) high, 800 mm wide, 800 mm depth, 550 kg loadrating, 2 x 19" frames, 4 x EIA rail hole grid servertype, 4 x depth brace, 8 x 19" brackets, 2 x side panel 800 mm wide, glass door front, sheet door rear, top cover with cable entry and cut outs for fan unit can be broken out, bottom open, assembly material. Color light grey RAL 7035.
011501041007	Knürr INR Network Rack (LAN) assembled, 2000 mm (42U) high, 800 mm wide, 1000 mm depth, 550 kg loadrating, 2 x 19" frames, 4 x EIA rail hole grid servertype, 4 x depth brace, 8 x 19" brackets, 2 x side panel 800 mm wide, glass door front, sheet door rear, top cover with cable entry and cut outs for fan unit can be broken out, bottom open, assembly material. Color light grey RAL 7035.
011501041011	Knürr INR Network Rack (LAN) assembled, 2200 mm (47U) high, 800 mm wide, 800 mm depth, 550 kg loadrating, 2 x 19" frames, 4 x EIA rail hole grid servertype, 4 x depth brace, 8 x 19" brackets, 2 x side panel 800 mm wide, glass door front, sheet door rear, top cover with cable entry and cut outs for fan unit can be broken out, bottom open, assembly material. Color light grey RAL 7035.
011501041012	Knürr INR Network Rack (LAN) assembled, 2200 mm (47U) high, 800 mm wide, 1000 mm depth, 550 kg loadrating, 2 x 19" frames, 4 x EIA rail hole grid servertype, 4 x depth brace, 8 x 19" brackets, 2 x side panel 800 mm wide, glass door front, sheet door rear, top cover with cable entry and cut outs for fan unit can be broken out, bottom open, assembly material. Color light grey RAL 7035.

Racks & Integrated Cabinets
Vertiv™ Knürr®
INR Server Rack



New modular rack enclosure optimized for fast assembly or disassembly, easy installation and simplified cabling and maximum air flow circulation.

Key Benefits

- **Tool-less Installation** - The stable 19" frame allows for loads of up to 800 kg to be installed
- **Assembled or flat packed** – fast assembled or disassembled in 30 minutes
- **Easy Access** - Vertically separated side - easy handling and fast, simple access to installed equipment
- **Optimised Airflow** - Its large perforated surface optimizes air ventilation for single components – air flow of 83%
- **Flexible Cabling** - Frameless architecture eliminates the need for cable threading allowing for optimal cable management
- **Tool-less Installation** - No need for tools when installing Vertiv MPH2 Rack PDU and vertical side panels
- **Accessories** – Brush strip for break-outs, Base plate, Castors, Air partition, side-by-side row connector, C profile rails, Base support for roof cabling.
- **Dimensions:** - Width: 600 mm or 800 mm
 - Height: 2000 mm (42U) or 2200 mm (47U)
 - Depth: 1000 mm or 1100mm or 1200 mm
- **Color** - powder coated RAL 7021 dark gray.

Applications

- Data Centers
- Server equipment
- Telecommunications equipment
- Network closets.

Don't forget to check your Upsell Opportunities!
 Do your Clients need any complementary product?
 See: **Vertiv Avocent® Remote Management Solutions**
Vertiv Avocent DSView™ Management Software
Vertiv Avocent Data Center Planner

Technology: IEC standard 60297
Communications: Optional rack monitoring unit available

Part Number	Description
011500078009	Knürr INR Server Rack flat pack , 2000 mm (42U) high, 600 mm wide, 1200 mm depth, 800 kg loadrating, 4 x EIA rail holegrid server type, 4 x depth brace, 8 x 19" brackets, 2 x side panel 600 mm wide, perforated front door, perforated rear double door, top cover for cable entry and fans can be broken out, bottom open, assembly material, Color dark gray RAL 7021, Gross Dimension without pallet (h 530 x w 2230 x d 860 mm), Gross Weight 127 kg
011500078014	Knürr INR Server Rack flat pack , 2200 mm (47U) high, 600 mm wide, 1200 mm depth, 800 kg loadrating, 4 x EIA rail holegrid server type, 4 x depth brace, 8 x 19" brackets, 2 x side panel 600 mm wide, perforated front door, perforated rear double door, top cover for cable entry and fans can be broken out, bottom open, assembly material, Color dark gray RAL 7021, Gross Dimension without pallet (h 530 x w 2230 x d 860 mm), Gross Weight 177 kg
011500088008	Knürr INR Server Rack flat pack , 2000 mm (42U) high, 800 mm wide, 1100 mm depth, 800 kg loadrating, 4 x EIA rail holegrid server type, 4 x depth brace, 8 x 19" brackets, 2 x side panel 500 mm wide, 2 x side panel 600 mm wide, perforated front door, perforated rear double door, top cover for cable entry and fans can be broken out, bottom open, assembly material, Color dark gray RAL 7021, Gross Dimension without pallet (h 530 x w 2230 x d 860 mm), Gross Weight 177 kg
011500088009	Knürr INR Server Rack flat pack , 2000 mm (42U) high, 800 mm wide, 1200 mm depth, 800 kg loadrating, 4 x EIA rail holegrid server type, 4 x depth brace, 8 x 19" brackets, 2 x side panel 600 mm wide, perforated front door, perforated rear double door, top cover for cable entry and fans can be broken out, bottom open, assembly material, Color dark gray RAL 7021, Gross Dimension without pallet (h 530 x w 2230 x d 860 mm), Gross Weight 117 kg
011500088014	Knürr INR Server Rack flat pack , 2200 mm (47U) high, 800 mm wide, 1200 mm depth, 800 kg loadrating, 4 x EIA rail holegrid server type, 4 x depth brace, 8x 19" brackets, 2 x side panel 600 mm wide, perforated front door, perforated rear double door, top cover for cable entry and fans can be broken out, bottom open, assembly material, Color dark gray RAL 7021, Gross Dimension without pallet (h 530 x w 2230 x d 860 mm), Gross Weight 167 kg
011501078009	Knürr INR Server Rack assembled , 2000 mm (42U) high, 600 mm wide, 1200 mm depth, 800 kg loadrating, 4 x EIA rail holegrid server type, 4 x depth brace, 8 x 19" brackets, 2 x side panel 600 mm wide, perforated front door, perforated rear double door, top cover for cable entry and fans can be broken out, bottom open, Color dark gray RAL 7021, Gross Dimension without pallet (w 600 x h 2000 x d 1200 mm), Weight 100 kg
011501078014	Knürr INR Server Rack assembled , 2200 mm (47U) high, 600 mm wide, 1200 mm depth, 800 kg loadrating, 4 x EIA rail holegrid server type, 4 x depth brace, 8 x 19" brackets, 2 x side panel 600 mm wide, perforated front door, perforated rear double door, top cover for cable entry and fans can be broken out, bottom open, Color dark gray RAL 7021, Gross Dimension without pallet (w 600 x h 2200 x d 1200 mm), Weight 150 kg
011501088008	Knürr INR Server Rack assembled , 2000 mm (42U) high, 800 mm wide, 1100 mm depth, 800 kg loadrating, 4 x EIA rail holegrid server type, 4 x depth brace, 8 x 19" brackets, 2 x side panel 500 mm wide, 2 x side panel 600 mm wide, perforates front door, perforated rear double door, top cover for cable entry and fans can be broken out, bottom open, Color dark gray RAL 7021, Gross Dimension without pallet (w 800 x h 2000 x d 1100 mm), Weight 105 kg
011501088009	Knürr INR Server Rack assembled , 2000 mm (42U) high, 800 mm wide, 1200 mm depth, 800 kg loadrating, 4 x EIA rail holegrid server type, 4 x depth brace, 8 x 19" brackets, 2 x side panel 600 mm wide, perforated front door, perforated rear double door, top cover for cable entry and fans can be broken out, bottom open, Color dark gray RAL 7021, Gross Dimension without pallet (w 800 x h 2000 x d 1200 mm), Weight 110 kg
011501088014	Knürr INR Server Rack assembled , 2200 mm (47U) high, 800 mm wide, 1200 mm depth, 800 kg loadrating, 4 x EIA rail holegrid server type, 4 x depth brace, 8 x 19" brackets, 2 x side panel 600 mm wide, perforated front door, perforated rear double door, top cover for cable entry and fans can be broken out, bottom open, Color dark gray RAL 7021, Gross Dimension without pallet (w 800 x h 2200 x d 1200 mm), Weight 160 kg

Racks & Integrated Cabinets Basic PDUs

Vertiv™ Knürr® DIS Rack PDU



Key Benefits

- Socket strip modules can be easily combined using plug-in connections
- Multiple configurations available
- Plug field protected with raised casing edges
- High stability and torsional strength provided through closed sheet steel casing
- Full power for all connected equipment due to full-length brass busbar
- Simple and quick installation on the rack's extrusion, resulting in a cost reduction in installation and wiring.

Applications

- Data centers
- Computer rooms
- Server racks
- Computer networking, laboratories and home sector.

Don't forget to check your Upsell Opportunities!

Do your Clients need any complementary product?
See: **Vertiv Avocent® Rack Power Manager**

Communications: SNMP & Web

Part Number	Description
033000041	DI-STRIP D COMPACT. 4 SOCKETS
033000081	DI-STRIP PWR 483MM 19"2.5M SCHUKO
033000111	DI-STRIP D COMPACT. 11 SOCKETS
033020061	DI-STRIP D Compact 6 SOCKETS+SWITCH
036220061	DI-STRIP EUR SCKT 383MM RACK MTG IEC320
036005421	DI-STRIP KG 3PH. 36XC13 6XC19
036311861	DI-STRIP PIZZA 1002MM 3PH 4M INPUT CABLE
036312141	DI-STRIP PIZZA 1017MM 1PH 4M INPUT CABLE
036005181	DI-STRIP EUR SCKT 783MM IEC60309
036008241	DI-STRIP KG 3Ph. 24Do 23HE

Racks & Integrated Cabinets

Vertiv™ MPH2 Rack PDU

Managed Rack PDU

Vertiv™ MPH2 Rack PDU is the most intelligent, high-availability line of managed rack PDUs. It offers remote monitoring and control capabilities as well as environmental input options, with multiple power input selections and output configurations.

Key Benefits

- Designed specifically to accommodate higher power densities and be resistant to higher temperatures.
- Easily upgradable to minimise downtime and carry manufacturer-provided support to ensure your own SLAs.
- Easily integrate with existing network and security architectures
- Energy and power metering provides users the information to maximize the data center power and cooling infrastructure.
- Modular hot swappable controller card
- Allows you to predict failing conditions before they occur
- Power and environmental trend reports through integration with Vertiv Avocent® Rack Power Manager, Vertiv Nform™ and the Vertiv *Trellis*™ platform
- Lowest power consumption
- Provides full featured monitoring and control in a cost effective package
- Ability to be preinstalled in Vertiv rack solutions
- Includes horizontal and vertical models.

Applications

- Data centers
- Computer rooms
- Server racks.

Don't forget to check your Upsell Opportunities!

Do your Clients need any complementary product?
See: **Vertiv Avocent® Rack Power Manager**

Communications: SNMP, WEB, CLI, Serial

Part Number	Description
MPHB3241	Vertiv MPH2 Rack PDU, metered, 0U, input C20 230V 16A, output (17) C13 + (2) C19
MPHB1243	Vertiv MPH2 Rack PDU, metered, 0U, input IEC309 230V 32A, output (30) C13 + (6) C19
MPHB1244	Vertiv MPH2 Rack PDU, metered, 0U, input IEC309 400V 3ph 16A, output (30) C13 + (6) C19
MPHB1245	Vertiv MPH2 Rack PDU, metered, 0U, input IEC309 400V 3ph 32A, output (30) C13 + (6) C19
MPHC3141	Vertiv MPH2 Rack PDU, switched, 0U, input C20 230V 16A, output (16) C13
MPHC1143	Vertiv MPH2 Rack PDU, switched, 0U, input IEC309 230V 32A, output (18) C13 + (6) C19
MPHC1144	Vertiv MPH2 Rack PDU, switched, 0U, input IEC309 3ph 400V 16A, output (18) C13 + (6) C19
MPHC1145	Vertiv MPH2 Rack PDU, switched, 0U, input IEC309 3ph 400V 32A, output (18) C13 + (6) C19
MPHR3141	Vertiv MPH2 Rack PDU, switched, 0U, input C20 230V 16A, output (16) C13 indiv metered
MPHR1143	Vertiv MPH2 Rack PDU, switched, 0U, input IEC309 230V 32A, output (18) C13 + (6) C19 indiv metered
MPHR1144	Vertiv MPH2 Rack PDU, switched, 0U, input IEC309 3ph 400V 16A, output (18) C13 + (6) C19 indiv metered
MPHR1145	Vertiv MPH2 Rack PDU, switched, 0U, input IEC309 3ph 400V 32A, output (18) C13 + (6) C19 indiv metered
MPHM3141	Vertiv MPH2 Rack PDU, metered, 0U, input C20 230V 16A, output (16) C13 indiv metered
MPHM1143	Vertiv MPH2 Rack PDU, metered, 0U, input IEC309 230V 32A, output (18) C13 + (6) C19 indiv metered
MPHM1144	Vertiv MPH2 Rack PDU, metered, 0U, input IEC309 3ph 400V 16A, output (18) C13 + (6) C19 indiv metered
MPHM1145	Vertiv MPH2 Rack PDU, metered, 0U, input IEC309 3ph 400V 32A, output (18) C13 + (6) C19 indiv metered
MPHB2141	Vertiv MPH2 Rack PDU, branch metered, 1U, input C20 230V 16A, output (12)C13
MPHB2341	Vertiv MPH2 Rack PDU, branch metered, 1U, input C20 230V 16A, output (8)C13 (2)C19
MPHB2143	Vertiv MPH2 Rack PDU, branch metered, 1U, input IEC 60309 230V 32A, output (12)C13
MPHB2343	Vertiv MPH2 Rack PDU, branch metered, 1U, input IEC 60309 230V 32A, output (8)C13 (2)C19
MPHB2144	Vertiv MPH2 Rack PDU, branch metered, 1U, input IEC 60309 230/400V 16A, output (12)C13
MPHB2244	Vertiv MPH2 Rack PDU, branch metered, 1U, input IEC 60309 230/400V 16A, output (2)C13 (6)C19
MPHB2245	Vertiv MPH2 Rack PDU, branch metered, 1U, input IEC 60309 230/400V 32A, output (2)C13 (6)C19

Racks & Integrated Cabinets **Elementary Rack PDU**

Vertiv™ MPE



Key Benefits

- Flexible power cable input, simplifying installation within the rack
- Cable and hardwired options (input cable can be connected locally)
- Output cable with locking mechanism prevents IT cables from being accidentally disconnected
- SpeedMount option for Vertiv™ Knürr® DCM® and Knürr INR Network Rack lowers installation costs and provides extra space in rack for cables and other components
- High variability within the Vertiv MPE line (various plug, socket, and power level combinations)
- Low unit profile with ultra-flat circuit breakers guarantees the most efficient space utilization
- High ambient temperature of up to 60 °C
- Highly durable aluminum profile for outstanding mechanical resistance.

Applications

- Data centers
- Computer rooms
- Server racks.

Part Number	Description
MPE-3141	Input 100-240V 16A C20 inlet, Output (18) C13+ (3) C19
MPE-3241	Input 100-240V 16A C20 inlet, Output (24) C13
MPE-3142	Input 230V IEC 60309 16A 1P+N+G, Output (18) C13 + (3) C19
MPE-3242	Input 230V IEC 60309 16A 1P+N+G, Output (24) C13
MPE-1243	Input 230V IEC 60309 32A 1P+N+G, Output (36) C13 + (6) C19
MPE-1543	Input 230V, IEC 60309 32A 1P+N+G, Output (24) C13 + (6) C19 + (3) Schuko
MPE-1643	Input 230V IEC 60309 32A 1P+N+G, Output (18) Schuko
MPE-1260	Input 230V 32A Hardwired, Output (36) C13 + (6) C19
MPE-1560	Input 230V 32A Hardwired, Output (24) C13 + (6) C19 + (3) Schuko
MPE-1660	Input 230V 32A Hardwired, Output (18) Schuko
MPE-1144	Input 230/400V 16A IEC 60309 16A 3P+N+G, Output (36) C13 + (12) C19
MPE-1444	Input 230/400V 16A IEC 60309 16A 3P+N+G, Output (36) C13 + (6) C19 + (3) Schuko
MPE-1644	Input 230/400V IEC 60309 16A 3P+N+G, Output (18) Schuko
MPE-1161	Input 230/400V 16A Hardwired, Output (36) C13 + (12) C19
MPE-1461	Input 230/400V 16A Hardwired, Output (36) C13 + (6) C19 + (3) Schuko
MPE-1661	Input 230/400V 16A Hardwired, Output (18) Schuko
MPE-1245	Input 230/400V 32A IEC 60309 3P+N+G, Output (36) C13 + (6) C19
MPE-1345	Input 230/400V IEC 60309 32A 3P+N+G, Output (24) C13 + (12) C19
MPE-1545	Input 230/400V IEC 60309 32A 3P+N+G, Output (24) C13 + (6) C19 + (3) Schuko
MPE-1645	Input 230/400V IEC 60309 32A 3P+N+G, Output (18) Schuko
MPE-1745	Input 230/400V IEC 60309 32A 3P+N+G, Output (48) C13
MPE-1262	Input 230/400V 32A Hardwired, Output (36) C13 + (6) C19
MPE-1362	Input 230/400V 32A Hardwired, Output (24) C13 + (12) C19
MPE-1562	Input 230/400V 32A Hardwired, Output (24) C13 + (6) C19 + (3) Schuko
MPE-1662	Input 230/400V 32A Hardwired, Output (18) Schuko
MPE-1762	Input 230/400V 32A Hardwired, Output (48) C13
MPE-3345-002	Input 230/400V IEC 60309 32A 3P+N+G, Output (6) C19

Racks & Integrated Cabinets **Adaptive Rack PDU**

Vertiv™ MPX Rack PDU



Key Benefits

- Allows user to add individual hot-swappable modules for capacity as demand grows
- Offers the ability to change input capacity or configuration while maintaining Rack PDU infrastructure
- Provides for local or remote monitoring and management of connected loads
- Provides a compatible monitoring platform for Vertiv™ MPH and Vertiv MPX Rack PDU, offering seamless common operation if deployed together
- Controls and manages individual receptacles and/or groups of loads and devices
- Predicts overcurrent conditions before they become critical
- Allows user to shut down non-essential equipment during power outages to maximize availability and back-up power
- Expanded branch overload protection minimises threat of cascading PDU overload
- Provides the most cost-effective design available — build, add on, or modify the platform design
- Allows redeployment of modules to suit changing needs
- Energy metering provides users the information to maximize data center power and cooling infrastructure
- Employs energy efficient receptacle control technology.

Applications

- Data centers
- Computer rooms
- Server racks.

Don't forget to check your Upsell Opportunities!

Do your Clients need any complementary product?
See: **Vertiv Avocent® Rack Power Manager**

Communications: SNMP & Web

Part Number	Description
MPXB RM -EEBC401N	MPX BRM EUR ELEM 4IEC L1-N
MPXB RM -EEBC402N	MPX BRM EUR ELEM 4IEC L2-N
MPXB RM -EEBC403N	MPX BRM EUR ELEM 4IEC L3-N
MPXB RM -EEBC7N1N	MPX BRM EUR ELEM 7IEC L1-N
MPXB RM -EEBC7N2N	MPX BRM EUR ELEM 7IEC L2-N
MPXB RM -EEBC7N3N	MPX BRM EUR ELEM 7IEC L3-N
MPXB RM -ERBC6N1N	MPX BRM 230V AC EUR 6 C13 L1-N
MPXB RM -ERBC6N2N	MPX BRM 230V AC EUR 6 C13 L2-N
MPXB RM -ERBC6N3N	MPX BRM 230V AC EUR 6 C13 L3-N
MPXB RM -ERBC401N	MPX BRM 230V AC EUR 4 C19 L1-N
MPXB RM -ERBC402N	MPX BRM 230V AC EUR 4 C19 L2-N
MPXB RM -ERBC403N	MPX BRM 230V AC EUR 4 C19 L3-N
MPXB RM -ERBC3P1N	MPX BRM 230V AC EUR 3 SCHUKO L1-N
MPXB RM -ERBC3P2N	MPX BRM 230V AC EUR 3 SCHUKO L2-N
MPXB RM -ERBC3P3N	MPX BRM 230V AC EUR 3 SCHUKO L3-N
MPXB RM -EEBC3P1N	MPX BRM EUR ELEM 3 SCHUKO L1-N
MPXB RM -EEBC3P2N	MPX BRM EUR ELEM 3 SCHUKO L2-N
MPXB RM -EEBC3P3N	MPX BRM EUR ELEM 3 SCHUKO L3-N
MPXPEM-EHABXQ30	MPX PEM 32A EU 1PH IEC
MPXPEM-EHABXT30	MPX PEM 16A EU 3PH IEC
MPXPEM-EHABXR30	MPX PEM 32A EU 3PH IEC
MPXPRC-V1880XXX	MPX POWER RAIL CHASSIS PWR&COMM BUS 1880

Data Center Thermal Management

Cooling systems for heating, ventilating, and air conditioning (HVAC)

Precise round-the-clock ambient temperature management ensures optimal equipment performance and reliability. Vertiv™ provides a broad range of precision HVAC solutions for mission-critical facilities and data centers, offering protection against even the slightest temperature variations. Achieve industry leading efficiency levels (PUE < 1.1), availability approaching 100%, and up to 50% lower capital and operating costs.

Thermal Management Liebert® CRV



The Thermal Management Row-Based Solution Designed for Modern Data Centers

Key Benefits

- Small footprint with large cooling capacity to save space in the data center
- Low energy consumption and high efficiency at full and partial load
- Full airflow and capacity modulation to meet modern data center requirements and to save energy
- Adjustable air discharge baffles to get the air where it needs to be close to the IT equipment
- Up to 20 rack temperature sensors to deliver real-time environmental control and guarantee the highest availability in the industry
- Suitable for buildings with or without raised floor
- Easy adaptability to any site due to simultaneous top and bottom connections
- Equipped with the industry's most advanced control to optimize performances
- Optional humidifier and electric reheat for precise temperature and humidity control.

Applications

- Data Centers with 1 to 20 racks
- Applications where IT service downtime is not acceptable
- For customers who want to keep their energy costs low
- For heat densities up to 10kW / Rack.

Don't forget to check your Upsell Opportunities!

Do your Clients need any complementary product?
See: **Vertiv Avocent® Rack Power Manager**

Technology:	Compressor with Cooling Capacity Modulation, EC Fans, Vertiv™ ICOM™ controller, Air filters with up to F5 filtration class
Monitoring:	Large Coldfire Display for local monitoring and control; Monitoring card for easy integration into Building Management system using Web, Modbus and Bacnet protocols.
Connections:	Bottom and top piping and cabling connections; Casters and leveling feet for easy unit positioning and installation

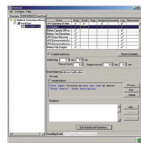
Part Number	Description
CR011E3	Liebert CRV 11kW Row Based DX cooling system, 300mm, Enterprise version, with air cooled condenser up to 40°C outdoor temperature
CR011E4	Liebert CRV 11kW Row Based DX cooling system, 300mm, Enterprise version, with air cooled condenser up to 46°C outdoor temperature
CR011P3	Liebert CRV 11kW Row Based DX cooling system, 300mm, Premium version, with air cooled condenser up to 40°C outdoor temperature
CR011P4	Liebert CRV 11kW Row Based DX cooling system, 300mm, Premium version, with air cooled condenser up to 46°C outdoor temperature
CR021E3	Liebert CRV 20kW Row Based DX cooling system, 300mm, Enterprise version, with air cooled condenser up to 40°C outdoor temperature
CR021E4	Liebert CRV 20kW Row Based DX cooling system, 300mm, Enterprise version, with air cooled condenser up to 46°C outdoor temperature
CR021P3	Liebert CRV 20kW Row Based DX cooling system, 300mm, Premium version, with air cooled condenser up to 40°C outdoor temperature
CR021P4	Liebert CRV 20kW Row Based DX cooling system, 300mm, Premium version, with air cooled condenser up to 46°C outdoor temperature
CR035E3	Liebert CRV 35kW Row Based DX cooling system, 600mm, Enterprise version, with air cooled condenser up to 40°C outdoor temperature
CR035E4	Liebert CRV 35kW Row Based DX cooling system, 600mm, Enterprise version, with air cooled condenser up to 46°C outdoor temperature
CR035P1	Liebert CRV 35kW Row Based DX cooling system, 600mm, Premium version, with air cooled condenser up to 40°C outdoor temperature
CR035P2	Liebert CRV 35kW Row Based DX cooling system, 600mm, Premium version, with air cooled condenser up to 46°C outdoor temperature
CR030E1	Liebert CRV 30kW Row Based chilled water cooling system, 300mm, Enterprise version
CR040E2	Liebert CRV 40kW Row Based chilled water cooling system, 600mm, Enterprise version
CR040P1	Liebert CRV 40kW Row Based chilled water cooling system, 600mm, Premium version
CR050E2	Liebert CRV 50kW Row Based chilled water cooling system, 600mm, Enterprise version

Monitoring Facilities and Monitoring Solutions



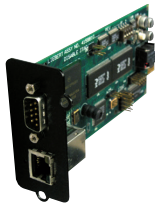
Vertiv™ MultiLink™ Software

Vertiv MultiLink software enables basic monitoring and graceful shutdown of all your Servers and Workstations in the event of a power failure. Vertiv MultiLink is available for single one-on-one installations or for multiple systems.



Vertiv Nform™

The Vertiv Nform software allows centralized management and control of SNMP enabled UPSs from Liebert and other vendors. Events and power related data can be tracked and messages sent in the event of a power failure or other power quality event.



SNMP and Web Monitoring

The Vertiv Intellislot SNMP/Web Card provides SNMP and web-based management to your UPS. The card gives you the power to monitor and control your Liebert UPS from a Network Management Station, with Vertiv's Nform or Vertiv MultiLink software, or from any PC running Microsoft® Internet Explorer™. Connecting to your UPS is as simple as launching a web browser.



Liebert® SiteScan® Web

Liebert SiteScan Web supplies full-scale monitoring and control of critical support systems, first by providing the ability to gather operating information from each piece of equipment and pull it together in one central location, and then by giving you a variety of ways to do it. Liebert SiteScan Web is a powerful hardware + software solution providing:

- Real-Time Monitoring and Control
- Alarm/Event Management
- Data Analysis and Trend Reporting
- Building Management Interoperability.

Data Center Management Solutions

Vertiv™ Avocent® products are a core component of Vertiv's Data Center Infrastructure. These solutions enable small to enterprise sized organisations reduce costs, increase security and optimise availability and productivity.

This portfolio includes hardware and software solutions. The hardware solutions enable secure, auditable remote access, control and management of critical devices through patented, out-of-band technology. This remote access can be to any distance and can scale to high definition audio and video for specialist verticals.

The software solutions deliver efficiencies to the data center specialist by centralising management of all IT devices. Furthermore, when documenting the data center, managing and planning capacity, we offer organisations a single source of truth tool where they can manage all aspects of this efficiently.

To make it easier, we have divided our products into two sections, as follows:

- **Section 1** – Focuses on customers who want desktop and server room solutions
- **Section 2** – Focuses on customers who require enterprise level solutions to meet the demanding business challenges which require an agile IT infrastructure

SECTION 1

Desktop and Server Room IT Management Solutions

Our range of products enables the end user to:

- Efficiently access control and manage the server room without the need to physically be there.
- Help remove IT assets from unsuitable work areas, like hospitals, factories, warehouses, clean rooms, shops.
- De-clutter work places where users require access to multiple PCs, but do not want to use multiple displays, keyboards and mice.
- Efficiently access server room assets and maximise server room space.

Desktop Solutions

Vertiv™ Avocent® KVM

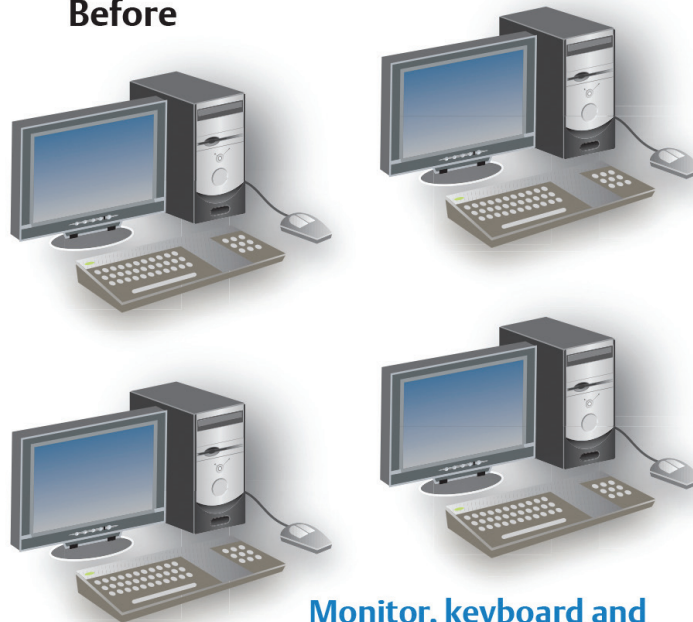
Having a dedicated display/keyboard/mouse for accessing each PC, can take up a lot of space and also cause unnecessary hardware cost. The whole process can become a costly mess.

This is where the Vertiv™ Avocent® Keyboard, Video, Mouse (KVM) Appliance comes in: our switch makes access possible to multiple PCs with only one set of peripherals and no software. With the Vertiv Avocent KVM Switch, the end user can immediately shift between multiple devices with high video resolutions and audio and USB sharing, without configuring settings.

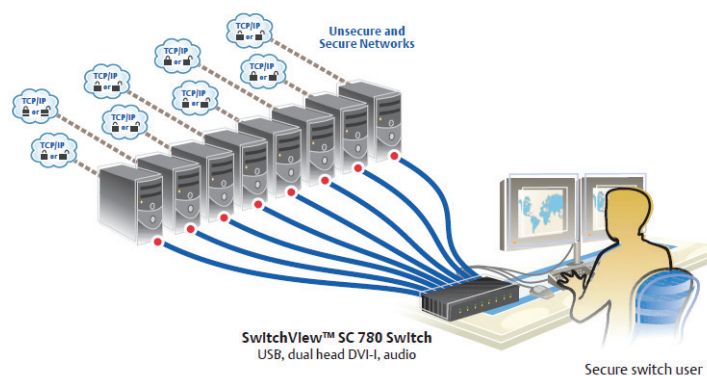
Simply plug in our device and benefit from:

- More space
- Less costs (no need to invest in several peripherals)
- Increased efficiency – easier to switch between devices
- A more productive work environment.

Before



Monitor, keyboard and mouse for each computer



Desktop Solutions

Vertiv™ Avocent® SwitchView™ KVM

Vertiv™ Avocent® SwitchView™ KVM switches enable you to use a single keyboard, monitor and mouse to access multiple PCs. SwitchView™ KVM switches can support PS/2 and/or USB PCs, and SwitchView™ multimedia switches let you share USB devices, speakers and a microphone between PCs.

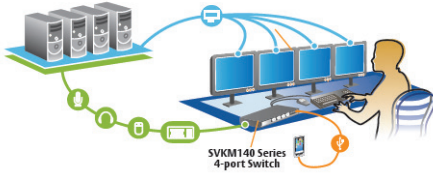
For more security focussed customers, Vertiv Avocent SwitchView™ SC KVM switches are field-proven, secure solutions for government agencies and other environments with high security requirements. These solutions allow users to switch safely between computers, operating at different classification levels, from a single switch, providing continuous access to critical data.

Beyond validation by the National Information Assurance Partnership (NIAP) Common Criteria to Evaluation Assurance Level (EAL) 4+ to 2+, the Vertiv Avocent SwitchView™ SC product line includes a full suite of features to increase security and ensure data protection without limiting the user experience.

Part Number	Description
SV220-202	2-Port DVI-I Standard KVM
SV220D-202	2-Port DisplayPort Standard KVM
SV220H-202	2-Port HDMI Standard KVM
SV240-202	4-Port DVI-I Standard KVM
SV240H-202	4-Port HDMI Standard KVM
SV240D-202	4-Port Display Port Standard KVM
SV340-202	4-Port DH DVI-I Standard KVM
SV340H-202	4-Port DH HDMI Standard KVM
SV340D-202	4-Port DH Display port Standard KVM
SC620-xxx	1 user, 2 systems, SwitchView SC switch, USB, DVI-I (dual link), audio
SC620C-xxx	1 user, 2 systems, SwitchView SC switch, USB, DVI-I (dual link), audio and CAC
SC640-xxx	1 user, 4 systems, SwitchView SC switch, USB, DVI-I (dual link), audio
SC640C-xxx	1 user, 4 systems, SwitchView SC switch, USB, DVI-I (dual link), audio and CAC
SC680-xxx	1 user, 8 systems, SwitchView SC switch, USB, DVI-I (dual link), audio
SC740-xxx	1 user, 4 systems, SwitchView SC switch, USB, DVI-I (dual link, dual head), audio
SC740C-xxx	1 user, 4 systems, SwitchView SC switch, USB, DVI-I (dual link, dual head), audio and CAC
SC780-xxx	1 user, 8 systems, SwitchView SC switch, USB, DVI-I (dual link, dual head), audio
SC840	4 systems, 1 display connection, DVI-I, single-link/dual-link, HDMI and VGA with adapter
SC845	4 systems, 1 port, 1 display connection, DVI-I, single-link/dual-link, HDMI and VGA with adapter
SC840D	4 system connections, 1 display connection, DP 1.2
SC845D	4 system connections, 1 port, 1 display connection, DP 1.2
SC840H	4 system connections, 1 display connection, HDMI 1.4
SC845H	4 system connections, 1 port, 1 display connection, HDMI 1.4
SC940	4 system connections, 2 display connections, DVI-I, single-link/dual-link HDMI and VGA with adapter
SC945	4 system connections, 1 port, 2 display connections, DVI-I, single-link/dual-link HDMI and VGA with adapter
SC940D	4 system connections, DP 1.2
SC945D	4 system connections, 1 port, DP 1.2
SC940H	4 system connections, 2 display connections, HDMI 1.4
SC945H	4 system connections, 1 port, 2 display connections, HDMI 1.4
SVIP1020-xxx	Appliance for remote access to KVM switch, with DVC compression
SC4PDV-xxx	1 user, 4 systems, SwitchView switch with PS2, DVI and built in security features
SC8PDV-xxx	1x8 SwitchView SC switch, PS/2, dual head DVI-I
SC240-xxx	1x4 SwitchView SC switch, PS/2, USB, VGA, CAC Reader Support, Intrusion detection
SC320-xxx	1 user, 2 systems, SwitchView SC switch, expanded USB, DVI-I (dual link), audio (4 port model also available)
SC380-xxx	1 user, 4 systems, SwitchView SC switch, expanded USB, DVI-I (dual link, single head), audio
SC620-xxx	1 user, 2 systems, SwitchView SC switch, USB, DVI-I (dual link), audio (4 or 8 port model also available)
SC740-xxx	1 user, 4 systems, SwitchView SC switch, USB, DVI-I (dual link, dual head), audio (8 port model also available)

Desktop Solutions

Vertiv™ Avocent® Cybex™ KM Switches



The Vertiv™ family of KM switches delivers the ideal solution for streamlining access to critical information from multiple systems while maintaining high security.

The Vertiv KM switches can support up to four systems with a single keyboard and mouse. In addition, the switches can be easily configured to display content in dual, triple or quad head monitor configurations, allowing the 4-port KM switch to support up to 16 monitors at once.

Choosing a Cybex™ KM Switches allows you to:

- Increase productivity with simultaneous access to all required information via cursor navigation switching
- Reduce cost with access to multiple systems using a single keyboard and mouse
- Support the mobile worker with instant access to mobile and USB device data and a high-speed mobile charging port
- Simplify work with ability to copy and paste data.

Part Number	Description
SVKM120-202	2-Port Standard KM
SVKM140-202	4-Port Standard KM
SCKM140	4-port Secure KM
SCKM145	4-port Secure KM + 1 DPP
CBL0130	Vertiv Avocent Cybex™ SCKM140 cable, USB keyboard, mouse with speakers - 1.8m
CBL0131	Vertiv Avocent Cybex™ SCKM140 cable, USB keyboard, mouse with speakers - 3m
CBL0132	Vertiv Avocent Cybex™ SCKM145 cable, USB keyboard, mouse with speakers & CAC - 1.8m
CBL0133	Vertiv Avocent Cybex™ SCKM145 cable, USB keyboard, mouse with speakers & CAC - 3m

Desktop and Server Room Solutions

Vertiv™ Avocent® Extension Solutions

If your business involves having expensive hardware in a dangerous environment, you definitely need a solution that allows you to protect your investment.

For example, having a computer in a manufacturing area can easily cause damages to the device, causing you to lose important data and a lot of money. If you're wondering how you can avoid this in the future, the Vertiv™ Avocent® Longview is the solution! Our product is the simple and inexpensive solution that allows you to remove the PC from the harmful environment, without losing any of the functionality.

The Vertiv Avocent Longview is the perfect device for you, if your business involves the following:

- Manufacturing, hospitals or laboratories
- Environments where protection from theft is needed
- Environments where heat, noise and dust are harmful to electronic equipment.

Part Number	Description
LVIPDH-xxx	LongView IP - Dual head DVI-D video, keyboard, mouse, USB, audio extender
LVIPHR-xxx	LongView IP - Digital extender (USB keyboard and mouse, DVI video, USB media & audio)
LV1000P-xxx	Transmitter/receiver pair - PS/2 keyboard, & mouse, video, audio & serial extender up to 300m
LV1000U-xxx	Transmitter/receiver pair - USB keyboard, & mouse, video, audio & serial extender up to 300m
LV1000R-xxx	Receiver unit only - USB keyboard, & mouse, video, audio & serial extender up to 300m

Server Room IT Management Solutions

Vertiv™ Avocent® "at-the-rack" access Solutions

When managing a server room, individually accessing each rack and device can waste a lot of time.

Vertiv offers you the solution which allows you to manage these devices from one central point. With the Vertiv™ Avocent® Rack Solutions you can access and control the server room without the need to physically be there. Not only do the rack solutions allow you to be in another room as the servers, but they also allow you to manage the servers from another building, country or continent as long as you have an Internet connection, through our digital IP range.

To sum up, by investing in the Vertiv Avocent Rack Solutions, you benefit from:

- More TIME – connect to any device in the server room, wherever you are, and stop wasting the time that takes for you to actually be there
- Proximity – an Internet connection can bring you closer to your server room, anywhere you are on the globe
- Less Costs – by accessing the servers faster, you can decrease the down time, thus allowing your business to save more money
- Simplify work with ability to copy and paste data.

Part Number	Description
4SV1000-xxx	1 local user, 4 systems switch with OSD, USB and PS/2 support (also 8 or 16 port model available)
AV2108-XXX	8 analog ports, 1x8 Cat-5 switch with USB, OSCAR™ graphical user interface OSD, virtual media and CAC support
AV2216-XXX	16 analog ports, 2x16 Cat-5 switch with USB, OSCAR™ graphical user interface OSD, virtual media and CAC support
RAK-Key	AV2108 and AV2216 digital upgrade key
MPUIQ-VMCHS	Server interface module for VGA, USB keyboard, mouse supporting virtual media, CAC and USB2.0.
MPUIQ-VMCHD	Server Interface Module for HDMI video, USB keyboard/mouse supporting virtual media, CAC and USB2.0.
MPUIQ-VMCDV	Server Interface Module for DVI video, USB keyboard/mouse supporting virtual media, CAC and USB2.0.
MPUIQ-VMCDP	Server Interface Module for DisplayPort video, USB keyboard/mouse supporting virtual media, CAC and USB2.0.
PS2IAC-7	7 ft. PS2 CAT-5 integrated access cable
PS2IAC-10	10 ft. PS2 CAT-5 integrated access cable
PS2IAC-15	15 ft. PS2 CAT-5 integrated access cable
USBIAC-7	7 ft. USB CAT-5 integrated access cable
USBIAC-10	10 ft. USB CAT-5 integrated access cable
USBIAC-15	15 ft. USB CAT-5 integrated access cable
AVRIQ-USB2	AV HIGH-RES/VM/CAC/USB2HS IQ MODULE
AVRIQ-VSN	Server Interface module for VGA or 13W3, Sun keyboard, mouse
AVRIQ-SRL	Server Interface module for VT100 Serial Based Devices for extended distance (requires UPD module)
UPD-xxx	Power Supply, Power Cord and 4 output cable to support up to 4 AVRIQ-SRL modules

Server Room IT Management Solutions

LCD Trays

Even though managing your infrastructure remotely gives you many benefits, there will be times when you will need to physically be there to add more hardware, memory, etc.

In order to do that, you need local access devices that get the job done efficiently. So, forget the crash carts, the long cable wires and wasting time by connecting/disconnecting the peripherals! Vertiv introduces you the built-in Vertiv™ Avocent® LCD tray, which allows you to save space and give you efficient access to the rack. Our products are developed smart, therefore offering you a better solution to managing your IT infrastructure.

The Vertiv Avocent LCD Trays are no different, hence offering you the following benefits:

- More Space – being compact, our LCD trays consume a minimum of space at the rack;
- Simplicity – the product is easy to mount and connect;
- Efficiency – a better working environment equals more productivity;
- Durability – our LCD trays are made to last!

The compact design is well-suited for the small to midsize business environment, data center and server rooms. Vertiv Avocent LCD consoles are available as a standalone or with an 8- or 16-port KVM switch in the same 1U space.

Part Number	Description
LRA185KMM-xxx	1U 19" LCD console w/ USB touchpad and keyboard
LRA185KMM8-xxx	1U 19" LCD console w/ USB touchpad, keyboard and pre-mounted 8-ports AutoView 3008 switch
LRA185KMM16-xxx	1U 19" LCD console w/ USB touchpad, keyboard and pre-mounted 16-ports AutoView 3016 switch

SECTION 2

Enterprise IT Infrastructure Solutions for Data Center

If you want to increase your profit, reduce your IT costs and streamline your data center management, you are certainly looking for:

1. Remote Management

Remotely and securely access and manage data center IT assets

2. Centralisation

Centralise and standardise IT remote management.

3. Capacity Management and Planning

Get visibility into current data center capacity and the ability to accurately forecast needs.

4. Power Management

Optimise your customers' data center power requirements and ensure maximum availability of their infrastructure.

Enterprise IT Infrastructure Solutions for Data Center Remote Management

With our technology, you can remotely manage any device, any location, any vendor, any time, securely.

This applies to servers and other IT and network devices (routers, switches, firewalls, etc). Administrators can control every connected device from anywhere they like, as if they were actually on site – even when the device itself can no longer communicate over the network. As a result, the response time and outage duration are shortened, thereby improving IT management efficiency and IT availability

Serial Consoles

Secure remote access to devices via their console port. Using ACS console servers, IT professionals and network operations center (NOC) personnel can conduct secure remote data center management including remote control, equipment monitoring or diagnosing and troubleshooting equipment.

Vertiv Avocent ACS 8000

Integrating important new connectivity features such as gigabit fiber, USB and sensors. a dual-core ARM processor architecture with expanded memory capabilities. Optimal performance, security, reliability for a complete out-of-band management solution.

Vertiv™ Avocent® ACS 6000

Advanced Console Server

The ACS 6000 console servers are Vertiv Avocent's next generation console manager. They provide secure, remote access to network devices and UNIX / LINUX-based servers.

Vertiv Avocent ACS v6000

Virtual Advanced Console Server

Advanced console server functionality encapsulated in a virtual machine. Tapping the direct serial connections of the virtual machine on which it resides, this technology delivers higher availability of servers in even the most complex cloud environment.



Part Number	Description
ACS-V6000-0004	4 Port Virtual ACS v6000 Appliance License
ACS-V6000-0008	8 Port Virtual ACS v6000 Appliance License
ACS-V6000-0016	16 Port Virtual ACS v6000 Appliance License
ACS-V6000-0024	24 Port Virtual ACS v6000 Appliance License
ACS-V6000-0048	48 Port Virtual ACS v6000 Appliance License
ACS6004SAC-G2	ACS 6000 4-port unit single AC power supply
ACS6004DAC-G2	ACS 6000 4-port unit dual AC power supply
ACS6004MDAC-G2	ACS 6000 4-port unit dual AC power supply with built-in modem
ACS6008SAC-G2	ACS 6000 8-port unit single AC power supply
ACS6008DAC-G2	ACS 6000 8-port unit dual AC power supply
ACS6008MDAC-G2	ACS 6000 8-port unit dual AC power supply with built-in modem
ACS6016SAC-G2	ACS 6000 16-port unit single AC power supply
ACS6016DAC-G2	ACS 6000 16-port unit dual AC power supply
ACS6016MDAC-G2	ACS 6000 16-port unit dual AC power supply with built-in modem
ACS6032SAC-G2	ACS 6000 32-port unit single AC power supply
ACS6032DAC-G2	ACS 6000 32-port unit dual AC power supply
ACS6032MDAC-G2	ACS 6000 32-port unit dual AC power supply with built-in modem
ACS6048SAC-G2	ACS 6000 48-port unit single AC power supply
ACS6048DAC-G2	ACS 6000 48-port unit dual AC power supply
ACS6048MDAC-G2	ACS 6000 48-port unit dual AC power supply with built-in modem
ACS8008SAC-400	8-Port ACS8000 Console System with single AC Power Supply
ACS8008SDC-400	8-Port ACS8000 Console System with single DC Power Supply
ACS8008DAC-400	8-Port ACS8000 Console System with dual AC Power Supply
ACS8008MSDC-400	8-Port ACS8000 Console System with single DC Power Supply and Analog Modem
ACS8008MDAC-400	8-Port ACS8000 Console System with dual AC Power Supply and Analog Modem
ACS8016SAC-400	16-Port ACS8000 Console System with single AC Power Supply
ACS8016DAC-400	16-Port ACS8000 Console System with dual AC Power Supply
ACS8016MDAC-400	16-Port ACS8000 Console System with dual AC Power Supply and Analog Modem
ACS8032SAC-400	32-Port ACS8000 Console System with single AC Power Supply
ACS8032DAC-400	32-Port ACS8000 Console System with dual AC Power Supply
ACS8032DDC-400	32-Port ACS8000 Console System with dual DC Power Supply
ACS8032MDAC-400	32-Port ACS8000 Console System with dual AC Power Supply and Analog Modem
ACS8032MDDC-400	32-Port ACS8000 Console System with dual DC Power Supply and Analog Modem
ACS8048SAC-400	48-Port ACS8000 Console System with single AC Power Supply
ACS8048DAC-400	48-Port ACS8000 Console System with dual AC Power Supply
ACS8048DDC-400	48-Port ACS8000 Console System with dual DC Power Supply
ACS8048MDAC-400	48-Port ACS8000 Console System with dual AC Power Supply and Analog Modem
ACS8048MDDC-400	48-Port ACS8000 Console System with dual DC Power Supply and Analog Modem
ADB0045	SX 550m multi mode SFP fiber transceiver
ADB0047	LX/LH 10km single SFP fiber transceiver
RMK-88	0U Rack Mount Kit for ACS8000/ACS9000
RMK-89	1U Rack Mount Kit for ACS8000/ACS9000

**Enterprise IT
Infrastructure Solutions
for Data Center**
Vertiv™ Avocent®
**Universal Management
Gateway**



Key Benefits

- Consolidated Management: Combines the functions of KVM over IP, serial console over IP, rack PDU, SP, and environmental sensor management into a single chassis
- Always-On: Highly reliable, local, remote and out-of-band access to data center infrastructure ensures that monitoring, control, and management can be done at any time, from any place
- Enhanced Security: Shields embedded service processors from unauthorized access; reducing the risk of malicious intrusion
- Streamlined Installation: Leverages pre-built service processor profiles for discovery and management, streamlining discovery and setup for newly installed hardware
- Universal Connectivity: Protects infrastructure investments and eases data center transitions with integrated support for a broad range of IT platforms
- Multi-Tenant Design: Creates a secure environment, improving compliance and auditing tasks for customers considering Colocation and Cloud implementations.

VERTIV AVOCENT UNIVERSAL MANAGEMENT GATEWAY

Part #	Description
Vertiv Avocent Universal Management Gateway	
UMG4000-400	UMG 4000 40P(AS) 512SP 5000DP
UMG6000-400	UMG6000 -UMG 6000 40P(AS) 1024SP 10K-DP
Vertiv Avocent Universal Management Gateway Adapters	
UMIQ-V2	UM KVM MODULE - VGA+SP DUAL RJ45
Vertiv Avocent Universal Management Gateway Accessories	
RMK-50	RACK-MOUNT KIT FOR UM APPLIANCE
WMK-01	WALL-MOUNT KIT FOR UM APPLIANCE
UMIQ-PS	POWER SUPPLY MODULE W/CABLE

Enterprise IT Infrastructure Solutions for Data Center

Vertiv™ Avocent® MergePoint Unity™

The Vertiv™ Avocent® MergePoint Unity™ switch is the next generation KVM over IP switch.

This industry-leading switch provides IT administrators a complete and secure remote management solution to access and control servers, networking equipment and other devices found in data centers and branch offices.

Key Benefits

- Advanced Remote Management - Provides secure and remote, out-of-band connections directly to the physical KVM, USB and serial ports to complement existing in-band software management tools
- Meet Service Level Agreements and Minimise Downtime - Unified approach enables IT administrators a faster method to diagnose, reconfigure or restore equipment
- Virtual Media - Enables USB media such as CD-ROMs, flash memory and external drives to be virtually attached to a remote server's USB port
- CAC/Smart Card Support - Utilizing the virtual media capabilities remote or local users can map a USB-based smart card reader to the attached servers and authenticate using their smart cards
- Enhanced Serial Adapters - Supports standard, remote SSH connections to the attached serial devices and includes electronic pin-out options for quick and easy connections to the console ports on Cisco network equipment
- Power Device Port - Connect supported rack PDUs for integrated power control, measurement and reporting
- FIPS 140-2 Compliant Cryptography - The FIPS mode of operation uses an embedded FIPS 140-2 certified OpenSSL cryptographic module (Certificate #1051).

Part Number	Description
DSR1024PS2-xxx	1 digital user, 1 local user, 1 PS/2 system KVM over IP desktop switch
DSR1024USB-xxx	1 digital user, 1 local user, 1 USB system KVM over IP desktop switch
DSAVIQ-PS2M	Virtual Media server interface module for VGA video, PS/2 keyboard and mouse, and USB 2.0 virtual media w/ 14 in. PS/2 and USB cables, required for DSR and AutoView™ switches.
DSRIQ-VSN	Server interface module for VGA or 13W3 video, Sun keyboard and mouse
DSRIQ-SRL	Server interface module for VT100 serial devices (requires UPD Module)
UPD-xxx	Power Supply, Power Cord and 4 output cable to support up to 4 DSRIQ-SRL modules
MPU108EDAC-001	8 port, 1 digital KVM path, Dual AC Power Supply
MPU1016DAC-001	16 port, 1 digital KVM path, Dual AC Power Supply
MPU2016DAC-001	16 port, 2 digital KVM paths, Dual AC Power Supply
MPU2032DAC-001	32 port, 2 digital KVM paths, Dual AC Power Supply
MPU4032DAC-001	32 port, 4 digital KVM paths, Dual AC Power Supply
MPU8032DAC-001	32 port, 8 digital KVM paths, Dual AC Power Supply
MPUIQ-VMCHD	Server Interface Module for HDMI video, USB keyboard/mouse supporting virtual media, CAC and USB2.0. Used with MPU appliance.
MPUIQ-VMCHS	HIGH-RES/VM/CAC/USB2HS IQ MODULE
MPUIQ-VMCHS32	HIGH-RES/VM/CAC/USB2HS IQ MODULE 32 PACK
MPUIQ-VMCDV	Server Interface Module for DVI video, USB keyboard/mouse supporting virtual media, CAC and USB2.0. Used with MPU appliance.
MPUIQ-VMCDP	Server Interface Module for DisplayPort video, USB keyboard/mouse supporting virtual media, CAC and USB2.0. Used with MPU appliance.
MPUIQ-SRL	MergePoint Unity switch serial IQ module

IT Infrastructure Solutions for Data Center and Control Rooms

Vertiv™ Avocent® Matrix Digital High Performance KVM System

The next-generation version of Vertiv™ Avocent® High Performance KVM products. It leverages the experience Vertiv has gained with the Vertiv Avocent AMX™ and HMX product lines to create the best-of-breed platform.

This unified approach enables the Vertiv Avocent Matrix to combine the instantaneous switch time of the Vertiv Avocent AMX™ system with the digital quality and advanced management features of the Vertiv Avocent HMX system.

Platform Approach

The platform's design creates a future-proof environment where customers can expand functionalities as new technology becomes available, such as alterations in display or peripheral standards.

Video Compression algorithm enables a pixel-accurate, lossless video experience with lag-free, real-time interaction to computing equipment via any USB enabled device.

Unified Management

Compatibility with LDAP and other user authentication frameworks allows the Vertiv Avocent Matrix High Performance KVM to be added easily to existing workflows and setups.

Part Number	Description
MXMGR-R2	Matrix Manager Software
MXR5110-xxx	Matrix Receiver, CATX, USB, single DVI-I, audio
MXS5132-xxx	Matrix 32-port rack mountable CATX switch with flexible ports and redundant power
MXS5120-xxx	Matrix 20-port rack mountable CATX switch with flexible ports
MXT5110-DVI	Matrix Transmitter, Copper, DVI-D with CBL0086 included
MXT5120-VGA	Matrix Transmitter, Copper, VGA with CBL0087 included
PSC0004-xxx	Receiver and high density transmitter mount power supply
DMK-08	Desk Mount Kit for Matrix Receiver
CBL0090	USB keyboard, mouse & DVI-D video cable & audio - 6 ft.
CBL0091	USB keyboard, mouse & DVI-D video cable & audio - 12 ft.
CBL0086	USB keyboard & mouse & DVI-D video cable & audio - 3 ft.
CBL0087	USB keyboard & mouse & VGA video cable & audio - 3 ft.
CBL0088	USB keyboard & mouse & VGA video cable & audio - 6 ft.
CBL0089	USB keyboard & mouse & VGA video cable & audio - 12 ft.
RMk-74	Matrix 1U Rack Mount for 3 Transmitters or 2 Receivers
RMK-72	Replacement Rack Mount for MXS5132/MXS5120 Switch

Enterprise IT Infrastructure Solutions for Data Center

**Vertiv™ Avocent®
DSView™**

Management software

Centralisation

IT administrators need to access IT devices from anywhere, carry out diagnoses and implement changes regularly. Regardless of the condition or status of the operating system or network, we offer a software solution which provides a secure, centralized management solution for all connected IT assets – the Vertiv™ Avocent® DSView™ management software.

When used in conjunction with serial console appliances, rack PDUs, service processor gateways and KVM appliances, the hardware and software combine to allow IT administrators to remotely access, monitor and control target devices on multiple platforms at numerous locations—anywhere, anytime.

When using Vertiv Avocent DSView™ software you benefit from:

- Easier Administration
- A secure, browser-based user interface for central administration of the entire integrated IT
- Reliable Access
- Hub-and-spoke architecture allows for high availability and decentralized, consolidated and location-independent access
- Easy Expansion
- Easy to incorporate new technologies and provides an integration option for VMware, Citrix and Hyper-V – in addition to an API for own developments and third party tools and systems
- Higher Security
- Supports seamless integration with existing security policies, offers various authentication mechanisms and encrypts the entire data traffic.

Part Number	Description
DSV4-START	DSView software Starter Pack (1 Hub, 1 Spoke, 250 Managed Devices)
DSV4-STND	DSView software Standard Pack (1 Hub, 2 Spokes, 500 Managed Devices)
DSV4-PLUS	DSView software Plus Pack (1 Hub, 4 Spokes, 2,000 Managed Devices)
DSV4-PREM	DSView software Premium Pack (1 Hub, 8 Spokes, 5,000 Managed Devices)
DSV4-MAX	DSView software Max Pack (1 Hub, 15 Spokes, Unlimited Managed Devices)
DSV4-SPOKE	DSView software Spoke Server add-on license
DSV4-ZONE	DSView software single Zone add-on license
DSV4-DEV1	DSView software Managed Device license – 1-pack
DSV4-DEV10	DSView software Managed Device license – 10-pack
DSV4-DEV50	DSView software Managed Device license – 50-pack
DSV4-DEV100	DSView software Managed Device license – 100-pack
DSV4-DEV500	DSView software Managed Device license – 500-pack
DSV4-DEV1000	DSView software Managed Device license – 1,000-pack
DSV4-DEV10000	DSView software Managed Device license – 10,000-pack
DSV4-DCP	DSView software add-on - DCP integration
DSV4-WSK	DSView software Web Services API kit

**Enterprise IT
Infrastructure Solutions
for Data Center
Capacity Management
and Planning:
Vertiv™ Avocent®
Data Center Planner**

If your customer's future plans include business growth with more effective and efficient data center capacity planning and management, then they will need greater IT agility.

Data center managers need a single source of truth of what is currently in their data center, and the impact of future changes, to enable them to be agile in meeting the changing business demands.

Powerfully visualise & document the entire data center

Vertiv™ Avocent® Data Center Planner is a powerful a user-friendly software solution enabling the user to plan, document and visualize the entire data center infrastructure. With end-to-end device connection visualization and power usage information included, Vertiv Avocent Data Center Planner provides the most realistic, current-state view of your physical infrastructure. With Vertiv Avocent Data Center Planner, you will gain real-world insight to enhance planning accuracy and rapidly implement changes.

Part Number	Description
DCP-L1-49-V040	Level 1 Perpetual License for 1-49 Assets
DCP-L2-99-V040	Level 2 Perpetual License for 50-99 Assets
DCP-L3-249-V040	Level 3 Perpetual License for 100-249 Assets
DCP-L4-999-V040	Level 4 Perpetual License for 250-999 Assets
DCP-L5-1249-V040	Level 5 Perpetual License for 1000-1249 Assets
DCP-L6-2499-V040	Level 6 Perpetual License for 1250-2499 Assets
DCP-L7-3749-V040	Level 7 Perpetual License for 2500-3749 Assets
DCP-L8-5999-V040	Level 8 Perpetual License for 3750-5999 Assets
DCP-L9-12499-V040	Level 9 Perpetual License for 6000-12499 Assets
DCP-L10-25000-V040	Level 10 Perpetual License for 12500-25000 Assets

Enterprise IT Infrastructure Solutions for Data Center Power Management

Vertiv™ Avocent® Rack Power Manager You cannot control what you cannot measure.

Most organisations are trying to reduce data center energy consumption where possible. Unless the data center professional understands what is consuming the power, when and why, they are unable to make intelligent decisions on cost reduction strategies.

Vertiv Avocent Rack Power Manager gives the user the capability to monitor and measure the power consumption, the costs and the trends of a single server or of a complete data center in real time.

This enables the user to identify peaks and troughs, stranded capacity and hot spots. With this information they can better utilise and distribute the available power thereby increasing availability and reducing consumption.

Part Number	Description
RPM-BASE50	Rack Power Manager software base pack - 1 hub, 50 Rack PDU's
RPM-BASE100	Rack Power Manager software base pack - 1 hub, 100 Rack PDU's
RPM-BASE250	Rack Power Manager software base pack - 1 hub, 250 Rack PDU's
RPM-BASE500	Rack Power Manager software base pack - 1 hub, 500 Rack PDU's
RPM-BASE1000	Rack Power Manager software base pack - 1 hub, 1 Spoke 1,000 Rack PDU's
RPM-BASE2500	Rack Power Manager software base pack - 1 hub, 4 spokes, 2,500 Rack PDU's
RPM-SPOKE	Rack Power Manager spoke add-on license
RPM-PDU25	Rack Power Manager software 25 PDU add-on license
RPM-PDU50	Rack Power Manager software 50 PDU add-on license
RPM-PDU100	Rack Power Manager software 100 PDU add-on license
RPM-PDU250	Rack Power Manager software 250 PDU add-on license
RPM-PDU500	Rack Power Manager software 500 PDU add-on license
RPM-WSK	Rack Power Manager Web services API Kit w/ 5 hours Tech Support
RPM-DCP	RPM INTEGRATION WITH DCP

Emerson Network Power Ltd.
United Kingdom
Fourth Avenue, Globe Park - Marlow
Buckinghamshire SL71YG
Ph. +44 1628 403200
Fax +44 1628 40320

Emerson Network Power GmbH
Germany - Swiss - Austria
Lehrer-Wirth-Str. 4
D - 81829 München
Ph. + 49- 89 -90 50 07 - 51
Fax + 49- 89- 90 50 07 - 37

Emerson Network Power S.r.l.
Italy
Via Gioacchino Rossini, 6
20098 - San Giuliano Milanese - Milano
Ph. +39 02 982501
Fax +39 02 98250273

Emerson Network Power S.A.
France
Bâtiment Liège
1 place des Etats-Unis - 94150 Rungis
Ph. +33 1 48 84 40 90

Emerson Network Power Sp z.o.o.
Poland
Ul. Szturmowa 2A
PL - 02-678 Warszawa
Ph. +48 22 458 92 60
Fax +48 22 458 92 61

Emerson Network Power, S.A.
Spain
Edificio Oficor
C/ Proción 1-3
28023 MADRID
Ph. +34 91 414 00 30
Fax +34 91 662 37 76

ООО « Эмерсон »
115054, Россия, Москва
Дубининская 53, строение 5
T: +7 495 9959559
Ф: +7 495 4248850
emeapartnermarketing@vertivco.com

Emerson Network Power
Middle East, North Africa
PO Box 17034
Jebel Ali Free Zone South
Dubai, United Arab Emirates
Ph. +971 4 811 8100
Fax +971 4 886 5465

Emerson Network Power
Güç Sistemleri Ltd. Şti.
Şerifali Mah. Turcan Cad. No:60
34775 Ümraniye-İstanbul
Ph. +90 216 586 79 00
Fax +90 216 586 79 79
emeapartnermarketing@vertivco.com

Emerson Network Power
South Africa
11 Quark Crescent
Linbro Business Park
Sandton
Ph. +27 11 284-9600



VertivCo.com | Emerson Network Power Limited, George Curl Way, Southampton, SO18 2RY, VAT Number: GB188146827

© 2016 Vertiv Co. All rights reserved. Vertiv™, the Vertiv logo and all other names and logos referred to are trademarks or registered trademarks of Vertiv Co. All other names and logos referred to are trade names, trademarks or registered trademarks of their respective owners. While every precaution has been taken to ensure accuracy and completeness herein, Vertiv Co. Assumes no responsibility, and disclaims all liability, for damages resulting from use of this information or for any errors or omissions. Specifications are subject to change without notice.