

Ibanez Artists



Discover your sound

Brolle Jr.	/	Brolle Jr.
Caisa	/	Calaisa
Cesareo	/	Elio e le Storie Tesa
Mat Dauzat	/	Hydrovibe
Gareth Davies	/	Funeral For A Friend
Skip Denenberg		
Torben Enevoldsen	/	Section A
Max Flövik	/	Lillasyster
Ross Grant	/	JEM, Dogfysh
Roland Guerin		
Honza Kirk Behunek	/	Solo Artist, SEVEN
Mattias Larsson	/	Takida
Fabrizio Leo	/	Eros Ramazzotti, Fiorella Mannoia
Lisa	/	Calaisa
David Lowery	/	Cracker, Camper Van Beethoven
Malin	/	Calaisa
Edwin McCain	/	Edwin McCain Band
Larry Mitchell		
Bret Michaels	/	Poison, Bret Michaels Band
Tobi Oyerinde	/	Duffy, Estelle
Ian Pitterz	/	Lily Allen
Paul Reid	/	Beverly Knight
Matt Roberts	/	3 Doors Down
Joe Satriani		
Barry Stock	/	Three Days Grace
Tonxu		
Steve Vai		
Brad Walst	/	Three Days Grace
Martin Westerstrand	/	Lillasyster
Michael Wilton	/	Queensryche
Eddy Zak		

Ibanez
Ibanez Acoustic Guitars 2010
www.ibanez.com

All colors shown are as close as four-color printing will allow.
All specifications are subject to change without notice.

©2010 Printed in Japan OCT09751

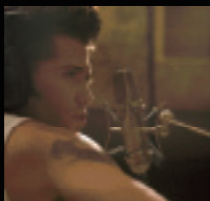
Ibanez Acoustic Guitars 2010
www.ibanez.com



Joe Satriani



Steve Vai



Brolle Jr.
(Brolle Jr.)

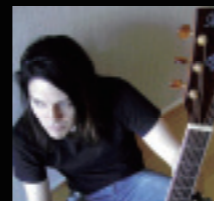


Caisa
(Calaisa)

*Photo: Daniel Andersson



Cesareo
(Elio e le Storie Tesa)



Mat Dauzat
(Hydrovibe)



Gareth Davies
(Funeral For A Friend)



Skip Denenberg



Max Flövik
(Lillasyster)



Roland Guerin



Honza Kirk Behunek
(Solo Artist, SEVEN)



Mattias Larsson
(Takida)



Fabrizio Leo
(Eros Ramazzotti, Fiorella Mannoia)



Lisa
(Calaisa)

*Photo: Daniel Andersson



David Lowery
(Cracker, Camper Van Beethoven)



Malin
(Calaisa)

*Photo: Daniel Andersson



Edwin McCain
(Edwin McCain Band)



Bret Michaels
(Poison, Bret Michaels Band)



Larry Mitchell



Tobi Oyerinde
(Duffy, Estelle)



Matt Roberts
(3 Doors Down)



Barry Stock
(Three Days Grace)



Brad Walst
(Three Days Grace)



Martin Westerstrand
(Lillasyster)



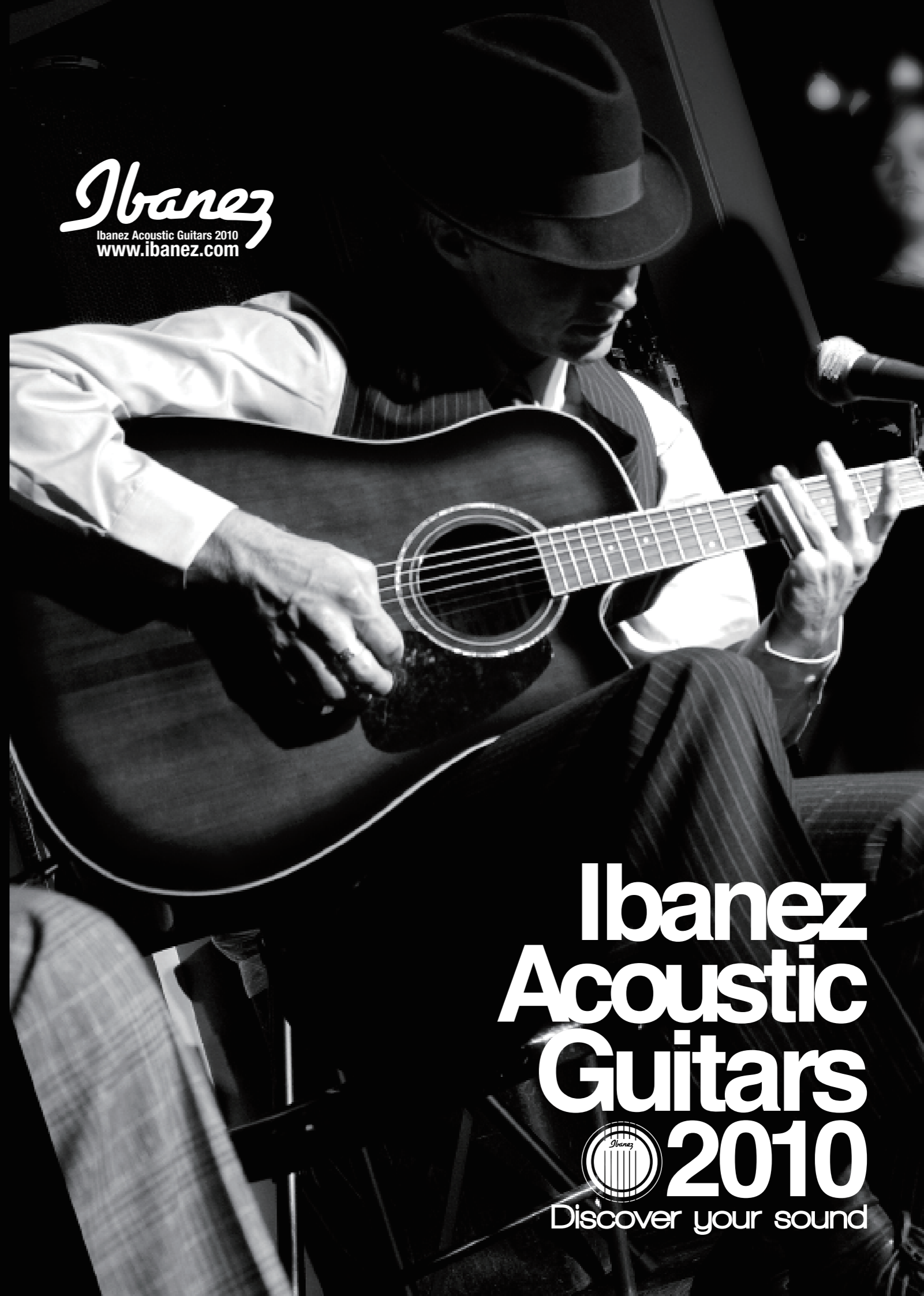
Michael Wilton
(Queensryche)

*Michael Wilton Lee Hollister



Eddy Zak

Ibanez
Ibanez Acoustic Guitars 2010
www.ibanez.com



Ibanez
Acoustic
Guitars
2010

Discover your sound

table of contents

Ambiance series.....	P04-05	Sage series.....	P30-31
Exotic Wood series.....	P06-11	V series.....	P32-33
Artwood series Pure Acoustic.....	P12-14	G series.....	P34-35
Artwood Studio series.....	P15	JAM PACKS.....	P36
Artwood series Acoustic Electric.....	P16-17	Mandolin.....	P37
Montage series.....	P18-19	Bags & Cases.....	P37
JSA model.....	P20	Accessories.....	P38
Euphoria model.....	P21	Amplifiers.....	P39
AEG series.....	P22-23		
Talman series.....	P24		
AEL/AEB series.....	P26-29		



Discover your sound

With changes in gear, as in love, sometimes you just know. Lately you've begun to notice a hint of something restless and new stirring in your playing. Some wild mechanism has been set into motion and it's beyond your control. All those hours of practice are finally paying off. There's no question, it's time to move forward and refine.

Maybe you're preparing for your first solo acoustic set and you want to be sure the performance is just right - meaning you'd probably rather not spend the whole set fighting with your old beat up first guitar - as fun as that may sound.

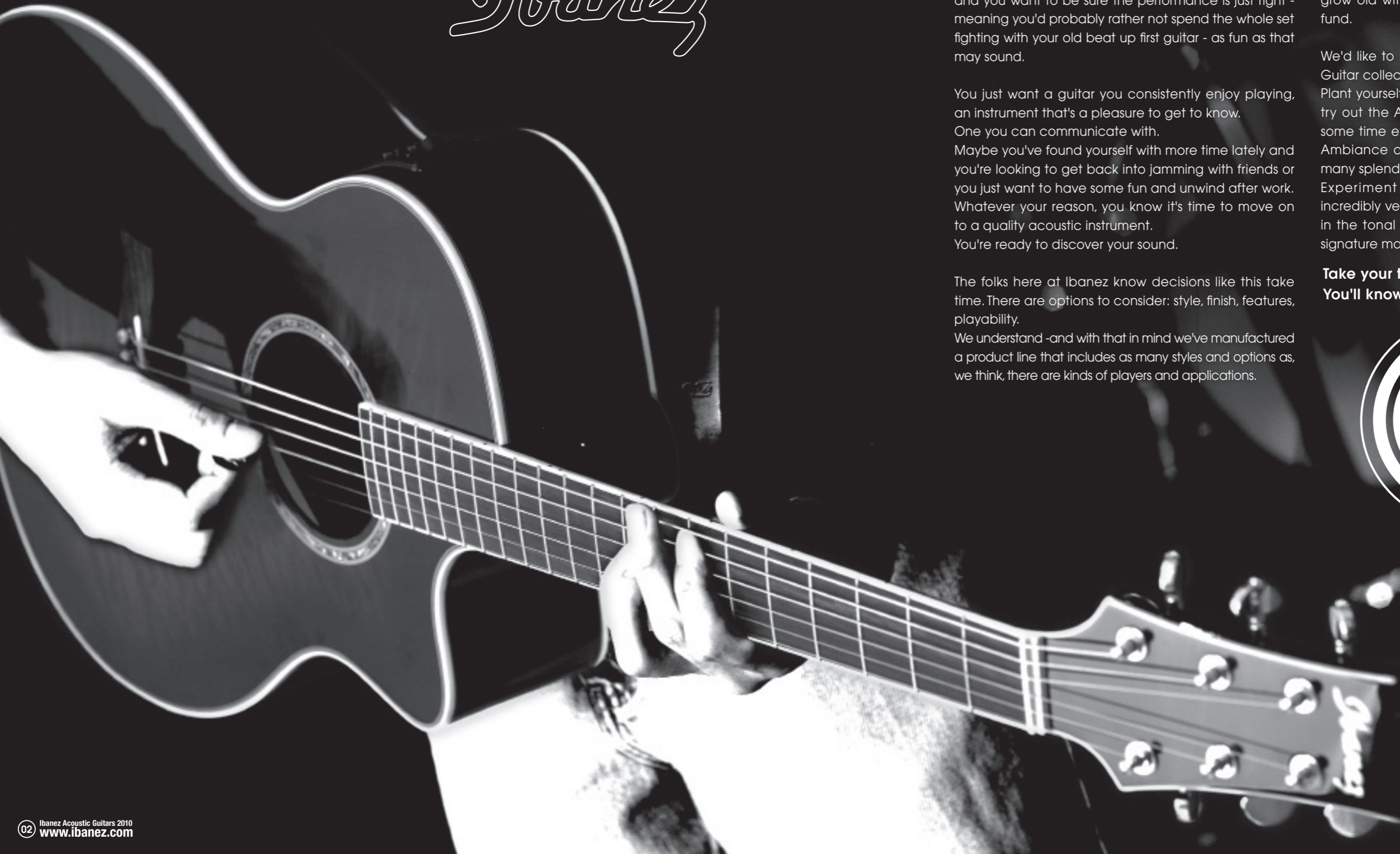
You just want a guitar you consistently enjoy playing, an instrument that's a pleasure to get to know. One you can communicate with. Maybe you've found yourself with more time lately and you're looking to get back into jamming with friends or you just want to have some fun and unwind after work. Whatever your reason, you know it's time to move on to a quality acoustic instrument. You're ready to discover your sound.

The folks here at Ibanez know decisions like this take time. There are options to consider: style, finish, features, playability. We understand -and with that in mind we've manufactured a product line that includes as many styles and options as, we think, there are kinds of players and applications.

Take our AW (Artwood) series, for instance. The traditional design and solid tone woods employed in creating these models will impress even the snobbiest purist. Whether you're looking for all acoustic standard dreadnought or a tricked-out cutaway, every AW is constructed and designed with features and materials associated with instruments far outside its price range. It's our goal to create exquisite guitars that you can grow old with without tapping into your retirement fund.

We'd like to invite you to explore our 2010 Acoustic Guitar collection. Plant yourself down at your local Ibanez dealer and try out the AWs for some traditional vibe or spend some time exploring the visually and aurally striking Ambiance and EW (Exotic Wood) series with their many splendored variations. Experiment with the unlimited potential of our incredibly versatile Montage line or immerse yourself in the tonal bliss of our Joe Satriani and Steve Vai signature models.

**Take your time, enjoy yourself.
You'll know the sound when you hear it.**





A300E VV

- Quilted Maple Top
- Quilted Maple Back & Sides
- Fishman® Sonicore Pickups
- Fishman® Presys™ Blend Preamp w/Built-in Internal Mic, Notch Filter & Onboard Tuner
- Gold Grover® Tuners
- Abalone Rosette
- Balanced XLR & 1/4" Outputs
- Vintage Violin High Gloss Finish

A300E TCS

- Quilted Maple Top
- Quilted Maple Back & Sides
- Fishman® Sonicore Pickups
- Fishman® Presys™ Blend Preamp w/Built-in Internal Mic, Notch Filter & Onboard Tuner
- Gold Grover® Tuners
- Abalone Rosette
- Balanced XLR & 1/4" Outputs
- Transparent Black Cherry Sunburst High Gloss Finish



Fishman® Presys™ Blend Preamp

The Fishman® Presys™ Blend Preamp with built-in internal mic offers wider sound variation by mixing piezo sound and the airy sound from an internal mic. The 3-band EQ with mic blend control is more than enough to create your own tonal character, and the Notch Filter and Onboard Tuner help to eliminate annoying onstage adjustments.



Ambiance series

The new Ibanez arched-back Ambiance series: ultimate stage performance instruments with gorgeous visual appointments and superior electronics. Quilted Maple tops, backs and sides, abalone rosettes and gold Grover® tuners, all masterfully combined with 100% Fishman® electronics and onboard tuners, ensuring you are both seen and heard.

- All Ambiance guitars feature**
- Ibanez Original Ambiance Body
 - Mahogany Neck
 - Arched Back
 - Rosewood Bridge & Fretboard

Ambiance Series Arched Back

The stunning arched backs in our Ambiance series provide feedback resistance and complete playing comfort.



Exotic Wood

EW series

Discover your sound 



EW50SME NT

- Spalted Maple Top
- Spalted Maple Back&Sides
- Gold Ibanez Smooth Tuner AS w/Brown Pearl Button
- Abalone Rosette
- Ebony Bridge & Fretboard
- Special Abalone Fretboard Inlay
- Wooden Neck & Body Binding
- Natural High Gloss Finish



EW New Preamp (SRTC)

The biggest advantage on the newly developed Ibanez SRTC preamp is that you can get a beautiful chorus sound instantly by pushing one button. Its innovative Anti-feedback Freq. control allows high, loud sound levels onstage without any annoying squeal creeping into the mix. Adjustments are minimal – no more onstage fiddling with your controls – and tuning up is a breeze thanks to the SRTC's convenient onboard tuner.

The universally praised EW series pairs gorgeous and exotically-toned woods such as Spalted Maple, Camphor Tree and Olive Ash Burl with the fantastic combo of B-Band® UST™ pickups and newly developed Ibanez SRTC preamps with chorus and onboard tuners, creating instruments that are pleasing to both the eye and ear. And since the EWs are priced so reasonably, you get an unbeatable combination: great looks, great sound and great price.

All EW guitars feature

- Ibanez Original EW Body
- Mahogany Neck
- B-Band® UST™ Pickup
- Ibanez SRTC Preamp
- Ibanez Smooth Tuner AS
- Balanced XLR & 1/4" Outputs



EW50QME NT

- Quilted Maple Top
- Quilted Maple Back&Sides
- Gold Ibanez Smooth Tuner AS w/Brown Pearl Button
- Abalone Rosette
- Ebony Bridge & Fretboard
- Special Abalone Fretboard Inlay
- Wooden Neck & Body Binding
- Natural High Gloss Finish

EW50CBE NT

- Cocobolo Top
- Cocobolo Back&Sides
- Gold Ibanez Smooth Tuner AS w/Brown Pearl Button
- Abalone Rosette
- Ebony Bridge & Fretboard
- Special Abalone Fretboard Inlay
- Wooden Neck & Body Binding
- Natural High Gloss Finish

EW series

All EW guitars feature

- Ibanez Original EW Body
- Mahogany Neck
- B-Band® UST™ Pickup
- Ibanez SRTc Preamp
- Ibanez Smooth Tuner AS
- Balanced XLR & 1/4" Outputs

Discover your sound 



EW20ASE NT

- Quilted Ash Top
- Quilted Ash Back&Sides
- Chrome Ibanez Smooth Tuner AS
- Abalone Rosette
- Rosewood Bridge & Fretboard
- Special Pearloid Fretboard Inlay
- Natural High Gloss Finish



EW20BGE NT

- Figured Bubinga Top
- Figured Bubinga Back&Sides
- Chrome Ibanez Smooth Tuner AS
- Abalone Rosette
- Rosewood Bridge & Fretboard
- Special Pearloid Fretboard Inlay
- Natural High Gloss Finish



EW20WNE NT

- Cordia Top
- Cordia Back&Sides
- Chrome Ibanez Smooth Tuner AS
- Abalone Rosette
- Rosewood Bridge & Fretboard
- Special Pearloid Fretboard Inlay
- Natural High Gloss Finish



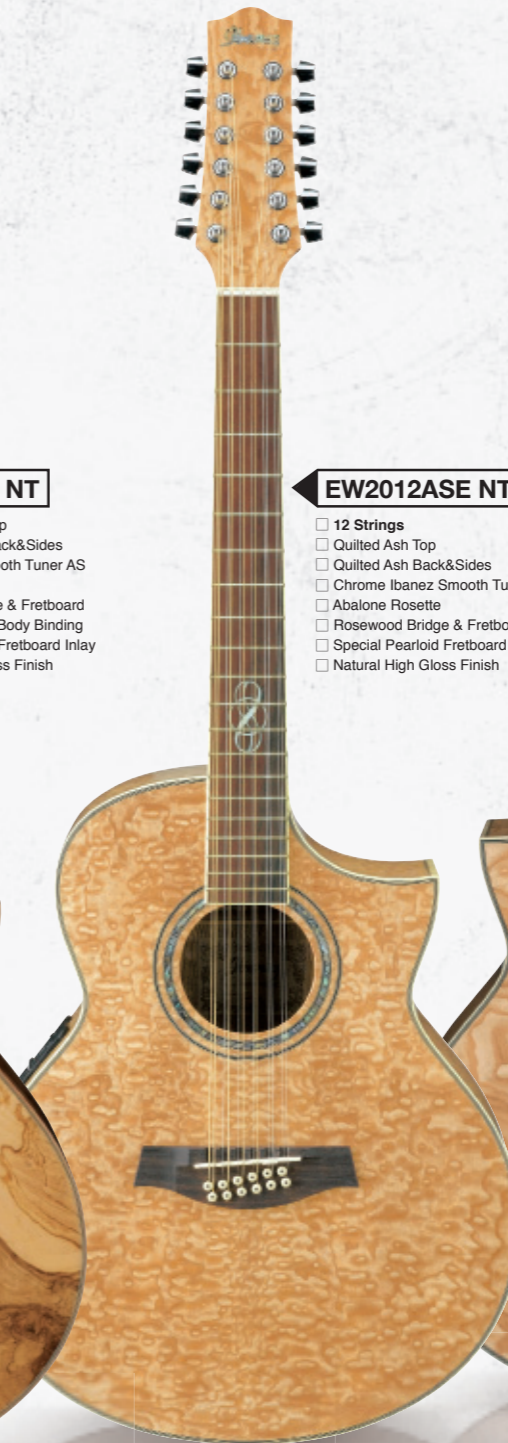
EW35ABE NT

- Olive Ash Burl Top
- Olive Ash Burl Back&Sides
- Gold Ibanez Smooth Tuner AS
- Abalone Rosette
- Rosewood Bridge & Fretboard
- Wooden Neck & Body Binding
- Special Pearloid Fretboard Inlay
- Natural High Gloss Finish



EW35CPE NT

- Camphor Tree Top
- Camphor Tree Back&Sides
- Gold Ibanez Smooth Tuner AS
- Abalone Rosette
- Rosewood Bridge & Fretboard
- Wooden Neck & Body Binding
- Special Pearloid Fretboard Inlay
- Natural High Gloss Finish



EW2012ASE NT

- 12 Strings
- Quilted Ash Top
- Quilted Ash Back&Sides
- Chrome Ibanez Smooth Tuner AS
- Abalone Rosette
- Rosewood Bridge & Fretboard
- Special Pearloid Fretboard Inlay
- Natural High Gloss Finish



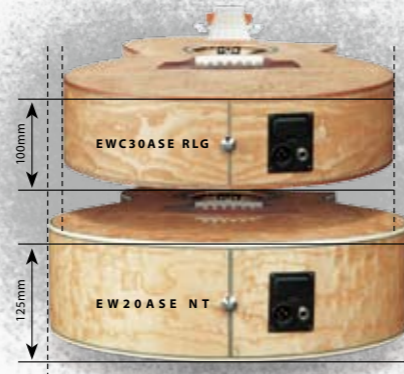
EW20LASE NT

- Left-handed
- Quilted Ash Top
- Quilted Ash Back&Sides
- Chrome Ibanez Smooth Tuner AS
- Abalone Rosette
- Rosewood Bridge & Fretboard
- Special Pearloid Fretboard Inlay
- Natural High Gloss Finish

Discover your sound

EWC/EWN

The EWC series guitars feature a body that's smaller and shallower than the original EWs, but no less tuneful. EWCs combine woods like Padauk and Figured Ash with the same high-quality electronics as the larger EW Series. The Ibanez EWN Nylon-string series brings together comfortable nylon strings, thinner necks than standard classical guitars and beautiful Flamed Sycamore, to create instruments that feel and play like the smoothest classical guitar you've ever held (and the best looking).



EW Body Size

The EWC's relatively compact body offers a more comfortable playability.

All EWC/EWN guitars feature

- Ibanez Original EWC Body
- Mahogany Neck
- B-Band® UST™ Pickup
- Ibanez SRTc Preamp
- Rosewood Bridge & Fretboard
- Balanced XLR & 1/4" Outputs



EWC30ASE RLG

- Quilted Ash Top
- Quilted Ash Back&Sides
- Chrome Ibanez Smooth Tuner AS
- Abalone Rosette
- Wooden Neck & Body Binding
- Special Pearloid Fretboard Inlay
- Resonant Natural Low Gloss Finish

EWC30PDE RLG

- Padauk Top
- Padauk Back&Sides
- Chrome Ibanez Smooth Tuner AS
- Abalone Rosette
- Wooden Neck & Body Binding
- Special Pearloid Fretboard Inlay
- Resonant Natural Low Gloss Finish

EWN30SYE NT

- Nylon Strings
- Flamed Sycamore Top
- Flamed Sycamore Back&Sides
- Gold Classical Tuning Machines
- Laser-Engraved Wood Rosette
- Wooden Neck & Body Binding
- 14th Fret Neck/Body Joint
- Natural High Gloss Finish

EWB

The Exotic Wood basses, like the rest of the EW Series, combine beauty in craftsmanship and pro electronics to create an acoustic bass that sounds as good as it looks. The EWB basses feature a 34" scale neck for clearer articulation, and the 5-string EWB205WNE-NT is ready and able for players who desire the extended range of a low B string.



All EWB basses feature

- Ibanez Original EWB Body
- Mahogany Neck
- Fishman® Sonicore Pickup
- Ibanez SRTc Preamp
- Rosewood Bridge & Fretboard
- Balanced XLR & 1/4" Outputs
- 34" scale



EWB30PDE RLG

- Padauk Top
- Padauk Back&Sides
- Gold Die-Cast Tuning Machines
- Abalone Rosette
- Special Pearloid Fretboard Inlay
- Wooden Neck & Body Binding
- Resonant Natural Low Gloss Finish

EWB20WNE NT

- Cordia Top
- Cordia Back&Sides
- Chrome Die-Cast Tuning Machines
- Abalone Rosette
- Special Pearloid Fretboard Inlay
- Natural High Gloss Finish

EWB205WNE NT

- 5 strings
- Cordia Top
- Cordia Back&Sides
- Chrome Die-Cast Tuning Machines
- Abalone Rosette
- Special Pearloid Fretboard Inlay
- Natural High Gloss Finish

Traditional Solid-Top Pure Acoustics

AW series

Whether you choose a pure acoustic Artwood model with a solid Engelmann spruce top, or an acoustic-electric model with a Fishman® Sonicore pickup and Ibanez SST Shape Shifter preamp with onboard tuner, Artwood models offer playability, quality acoustic sound and huge value. These dreadnought bodies are extremely well-constructed, resonant and beautifully appointed.

AW3000 NT

- Dreadnought Body
- Solid Engelmann Spruce Top
- Solid Mahogany Back&Sides
- Gold Grover® Tuners w/Brown Pearl Button
- Bone Nut & Saddle
- Abalone Rosette
- Wooden Neck & Body Binding
- Abalone Fretboard Inlay
- Natural High Gloss Finish

AW 3000

The new Artwood flagship model, AW3000, is designed to produce the superior natural sound that people expect from a great pure acoustic guitar. Utilizing selected woods, materials and parts, as well as the ideal measurement of each, it delivers the greatest sound ever from Ibanez acoustic guitars. Welcome to the age of the Artwood Renaissance.

AW3000 Wood Binding

The wooden binding gives a luxurious look to the AW3000.

AW3000 New Neck Shape

The wider neck on AW3000 delivers more resonance and tone.

AW3000 Nut & Saddle

The bone nut and saddle on AW3000 delivers well-balanced sound.

Discover your sound 

All AW guitars feature

- Mahogany Neck
- Solid Top
- Rosewood Bridge & Fretboard

AW40 NT

- Dreadnought Body
- Solid Engelmann Spruce Top
- Mahogany Back&Sides
- Gold Ibanez Smooth Tuner AS
- Abalone Rosette
- Abalone Vine Fretboard Inlay
- Natural High Gloss Finish

AW40 TCS

- Dreadnought Body
- Solid Engelmann Spruce Top
- Mahogany Back&Sides
- Gold Ibanez Smooth Tuner AS
- Abalone Rosette
- Abalone Vine Fretboard Inlay
- Transparent Black Cherry Suburst High Gloss Finish

AW85 RLG

- Dreadnought Body
- Solid Cedar Top
- Cordia Back&Sides
- Gold Ibanez Smooth Tuner AS w/Brown Pearl Button
- Wooden Rosette
- Special Wooden Fretboard Inlay
- Wooden Neck & Body Binding
- Cordia Pickguard
- Resonant Natural Low Gloss Finish

AW series

All AW guitars feature

- Mahogany Neck
- Solid Top
- Ibanez Smooth Tuner AS
- Rosewood Bridge & Fretboard



AW35R NT

- Dreadnought Body
- Solid Cedar Top
- Rosewood Back&Sides
- Gold Ibanez Smooth Tuner AS w/Brown Pearl Button
- Abalone Rosette
- Wooden Fretboard Inlay
- Wooden Neck & Body Binding
- Natural High Gloss Finish

AW30 NT

- Dreadnought Body
- Solid Engelmann Spruce Top
- Mahogany Back&Sides
- Gold Ibanez Smooth Tuner AS w/Brown Pearl Button
- Abalone Rosette
- Wooden Fretboard Inlay
- Wooden Neck & Body Binding
- Natural High Gloss Finish

AW15 LG

- Dreadnought Body
- Solid Cedar Top
- Mahogany Back&Sides
- Gold Ibanez Smooth Tuner AS w/Brown Pearl Button
- Wooden Rosette
- Natural Low Gloss Finish

Discover your sound 

ARTWOOD STUDIO

All Solid Artwood Studio models represent the finest woods, electronics and innovative craftsmanship ever developed by Ibanez. Using Sitka Spruce, Rosewood, Flamed Maple and Cedar as primary ingredients, these instruments deliver strong, resonant tones while unplugged or through an amp or PA system. High quality B-Band® electronics provide the lush, dramatic acoustic tones that always sparkle, and new features such as F.A.S.T.™ (Fast Action Set-Up Technology for easy neck adjustments) and Flying Top construction make the Artwoods ahead of their time and just what you're looking for.



B-Band® UST™ Pickup & A5T™ Preamp

The A5T™ pre-amp features an onboard tuner and 4-band tone controls: Presence for brighter sound, Mid for smoothness, Bass for adjusting fullness, and Treble for high frequency response. Two notch filter controls, Frequency and Depth, help to control and eliminate feedback. A Phase switch provides additional feedback control by allowing the phase of the pickup to be reversed in relation to the phase of the amplification speaker(s).



Grover® Tuning Machines

The Artwood Studio features Grover® tuners for smooth and stable tuning.



Lukas Brunner



Flying Top Construction

Flying Top construction was originally developed by Swiss luthier, Lukas Brunner, and this construction has been applied on Brunner's own unique instruments. (For more information on Brunner Guitars, please check out www.brunner-guitars.com). Instead of an X-bracing pattern, the top is reinforced with a thin piece of spruce that is graduated towards the edges and supported at a single point by a "flying brace" attached to the sides. This provides an ideal combination of strength, weight, stiffness and flexibility that frees the top to vibrate at all frequencies, bringing you sparkling tone, exceptional balance and extraordinary responsiveness.

All ARTWOOD STUDIO guitars feature

- Solid Top, Back & Sides
- Ibanez Exclusive F.A.S.T.™ (Fast Action Set-up Technology) Adjustable Neck
- B-Band® UST™ Pickup
- B-Band® A5T™ Preamp
- Mahogany Neck
- Gold Grover® Tuning Machines w/Brown Pearl Button
- Abalone Rosette
- Ebony Bridge & Fretboard
- Wooden Neck & Body Binding
- Balanced XLR & 1/4" Outputs
- Hardshell Case Included

AWS100ECE NT

- Cutaway Dreadnought Body
- Selected Solid Sitka Spruce Top
- Solid Mahogany Back&Sides
- Natural High Gloss Finish

ACS1150ECE NT

- Cutaway Grand Concert Body
- Solid Cedar Top
- Solid Rosewood Back&Sides
- Natural High Gloss Finish



AW series

Traditional Solid-Top Acoustic Electrics

All AW guitars feature

- Solid Top
- Fishman® Sonicore Pickup
- Ibanez SST Preamp
- Mahogany Neck
- Ibanez Smooth Tuner AS
- Rosewood Bridge & Fretboard
- Balanced XLR & 1/4" Outputs



Fishman® Sonicore Pickup & IBZ SST Shape Shifter Preamp with Onboard Tuner

With the Ibanez Shape Shifter preamp, you spend less time tweaking controls and more time playing. The 3-band tone control features a tone shaper that's much like the volume contour on your stereo. However, instead of just an on-and-off switch, the tone shaper features an actual loudness contour control so you can precisely determine the level of the contour and get the right sound. The SST, designed to complement the Fishman® Sonicore pickup, offers quiet operation and features a phase reverse switch for reducing feedback. A separate battery compartment allows for easy battery changes.



AW40ECE NT

- Cutaway Dreadnought Body
- Solid Engelmann Spruce Top
- Mahogany Back&Sides
- Gold Ibanez Smooth Tuner AS
- Abalone Rosette
- Abalone Vine Fretboard Inlay
- Natural High Gloss Finish



AW40ECE DVS

- Cutaway Dreadnought Body
- Solid Engelmann Spruce Top
- Mahogany Back&Sides
- Gold Ibanez Smooth Tuner AS
- Abalone Rosette
- Abalone Vine Fretboard Inlay
- Dark Violin Sunburst High Gloss Finish



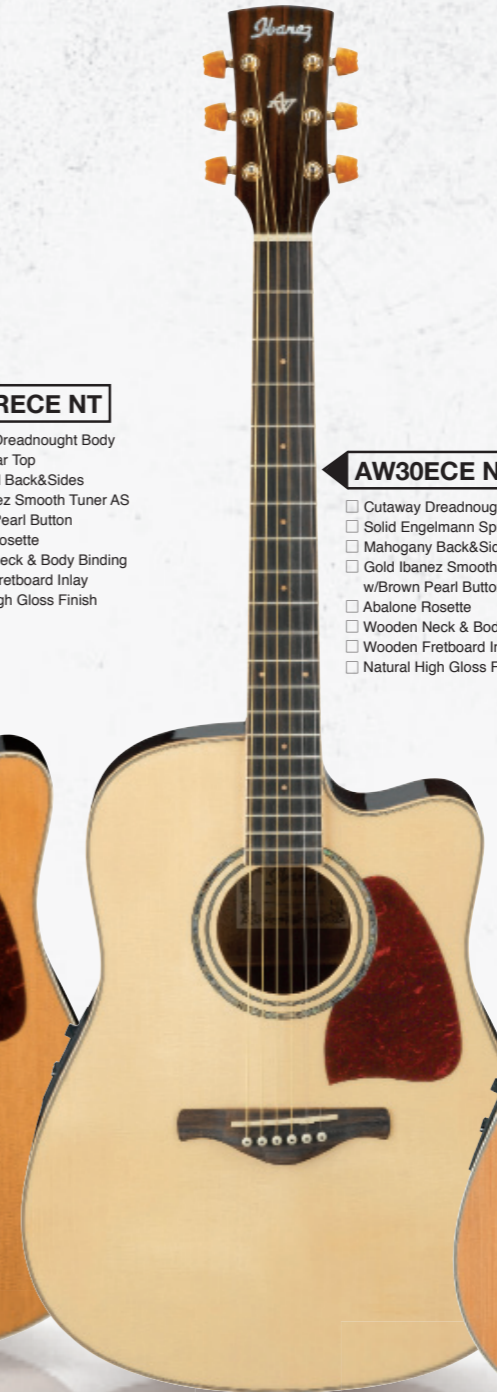
AW85ECE RLG

- Cutaway Dreadnought Body
- Solid Cedar Top
- Cordia Back&Sides
- Gold Ibanez Smooth Tuner AS w/Brown Pearl Button
- Wooden Rosette
- Special Wooden Fretboard Inlay
- Wooden Neck & Body Binding
- Cordia Pickguard
- Resonant Natural Low Gloss Finish



AW35RECE NT

- Cutaway Dreadnought Body
- Solid Cedar Top
- Rosewood Back&Sides
- Gold Ibanez Smooth Tuner AS w/Brown Pearl Button
- Abalone Rosette
- Wooden Neck & Body Binding
- Wooden Fretboard Inlay
- Natural High Gloss Finish



AW30ECE NT

- Cutaway Dreadnought Body
- Solid Engelmann Spruce Top
- Mahogany Back&Sides
- Gold Ibanez Smooth Tuner AS w/Brown Pearl Button
- Abalone Rosette
- Wooden Neck & Body Binding
- Wooden Fretboard Inlay
- Natural High Gloss Finish



AW15ECE LG

- Cutaway Dreadnought Body
- Solid Cedar Top
- Mahogany Back&Sides
- Gold Ibanez Smooth Tuner AS w/Brown Pearl Button
- Wooden Rosette
- Natural Low Gloss Finish



A Kaleidoscope of Sound

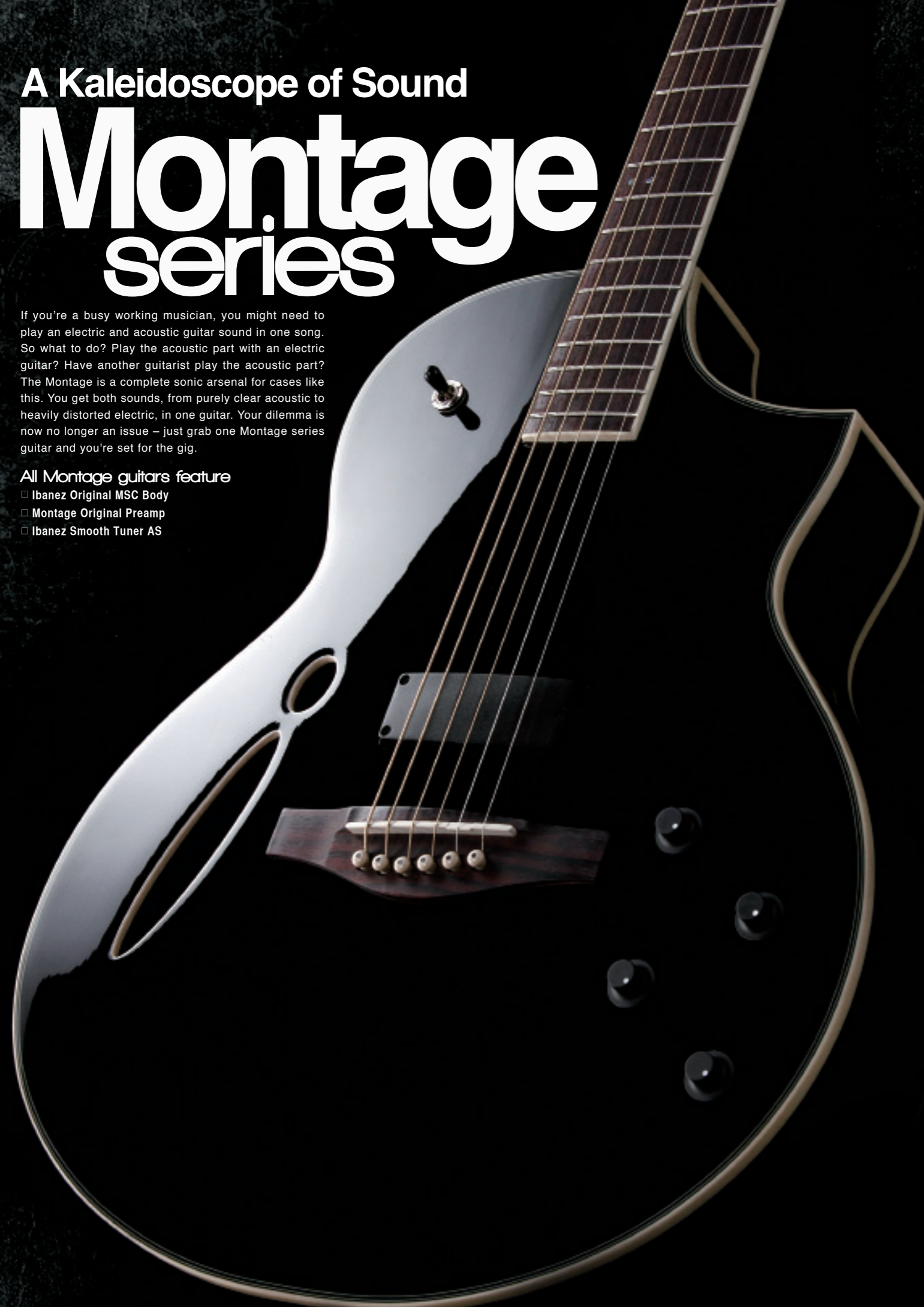
Montage series

If you're a busy working musician, you might need to play an electric and acoustic guitar sound in one song. So what to do? Play the acoustic part with an electric guitar? Have another guitarist play the acoustic part? The Montage is a complete sonic arsenal for cases like this. You get both sounds, from purely clear acoustic to heavily distorted electric, in one guitar. Your dilemma is now no longer an issue – just grab one Montage series guitar and you're set for the gig.

All Montage guitars feature

- Ibanez Original MSC Body
- Montage Original Preamp
- Ibanez Smooth Tuner AS

Discover your sound 



MSC700 NT

- Solid Cedar Top
- Rosewood Back&Sides
- Maple Neck
- Ibanez AP9 Magnetic Pickup & B-Band™UST™ Pickup
- Ibanez Original HBP
- DSP-Based Preamp
- Gold Ibanez Smooth Tuner AS w/Brown Pearl Button
- Ebony Bridge & Fretboard
- Wooden Neck & Body Binding
- Natural High Gloss Finish
- Hardshell Case Included

MSC650 VV

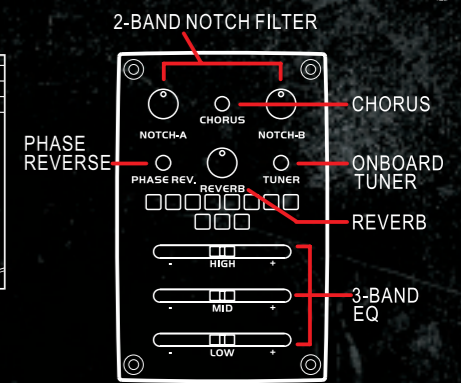
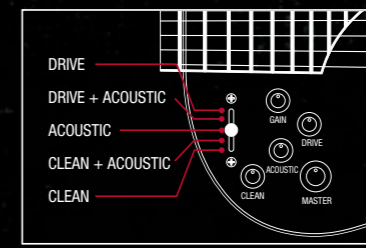
- Quilted Maple Top
- Quilted Maple Back&Sides
- Maple Neck
- Ibanez AP9 Magnetic Pickup & B-Band™UST™ Pickup
- Ibanez Original HBP
- DSP-Based Preamp
- Gold Ibanez Smooth Tuner AS
- Rosewood Bridge & Fretboard
- Vintage Violin High Gloss Finish
- Hardshell Case Included

MSC350 BK

- Spruce Top
- Mahogany Back&Sides
- Mahogany Neck
- Ibanez AP10 Magnetic Pickup & Ibanez Under Saddle Pickup
- Ibanez Original M300 Preamp
- Chrome Ibanez Smooth Tuner AS
- Rosewood Bridge & Fretboard
- Black High Gloss Finish

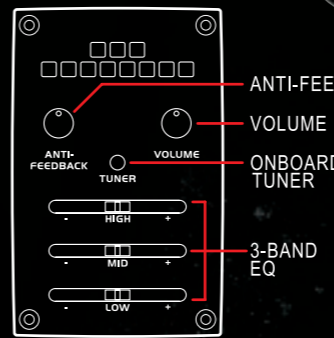
MSC350 NT

- Spruce Top
- Mahogany Back&Sides
- Mahogany Neck
- Ibanez AP10 Magnetic Pickup & Ibanez Under Saddle Pickup
- Ibanez Original M300 Preamp
- Chrome Ibanez Smooth Tuner AS
- Rosewood Bridge & Fretboard
- Natural High Gloss Finish



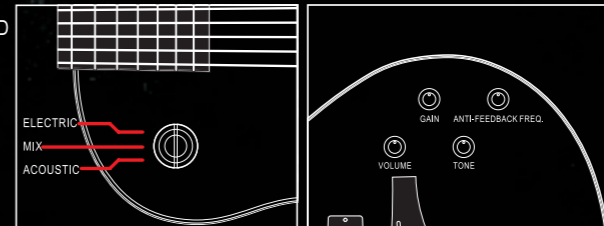
MSC650/700 Control & Preamp

MSC650 and 700 feature a 5-way switch that enables you to have acoustic or electric guitar sound, and mixed sound as well. Each sound has an individual volume control for attaining ideal balance between clean acoustic or distorted electric sounds. With the distorted electric guitar sound, the analog gain control lets you adjust for a natural and warm distortion tone. Along with a digital based preamp, the 2-band Notch Filter allows you to control anti-feedback frequency more precisely. Also included are controllable digital reverb, chorus, 3-band tone control, and phase reverse.



MSC350 Control & Preamp

A simpler version of the Montage, the MSC350 features a 3-way switch that enables you to get both acoustic and electric guitar sounds. Both sounds have individual control.



An under saddle pickup and 3-band EQ w/anti-feedback control deliver clear acoustic sound without compromise. And for electric sound, the gain control lets you adjust to the distortion level you want.



FISHMAN®



Fishman® Acoustic Matrix™ Pickup with Onboard Aura® Preamp

The unique Fishman® Onboard Aura® features six selectable Acoustic Sound Images. Each image was created using the EP9 and a different top shelf microphone so that the great tones of the EP9 in a professional recording environment can be reproduced in any venue. These Sound Images can be blended easily with the standard pickup signal according to taste. The Aura® also includes a programmable active 3-band tone control, anti-feedback control, onboard chromatic tuner with mute, and more.

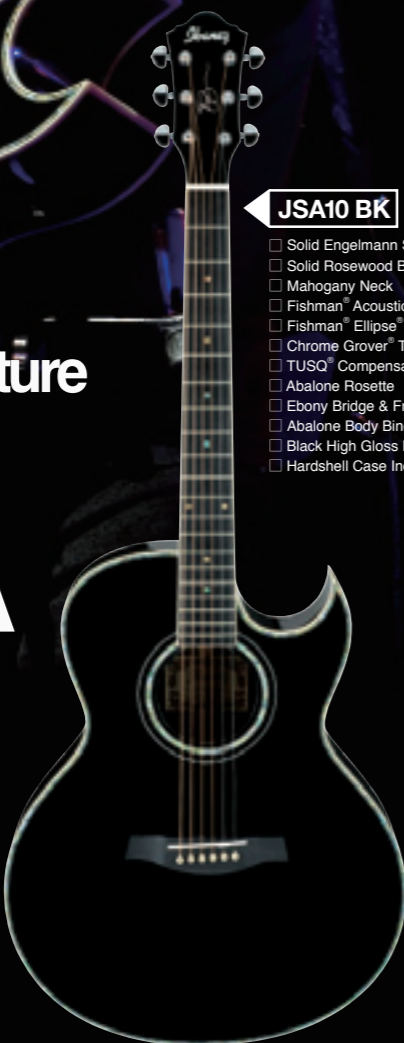


Joe Satriani Signature
JSA

"I've been playing the JSA acoustic onstage with Chickenfoot this year and it feels great, plays great and sounds wonderful. And, in all black, it looks so cool! It has outstanding projection, and an impressive dynamic range too, with a powerful clear tone essential for live performance.

The JSA acoustic has a full and balanced sound that's perfect for strumming, soloing, or, delicate finger picking. It has good access to the upper frets, and the electronics make anything you play sound clear and natural."

- Joe Satriani -



JSA10 BK

- Solid Engelmann Spruce Top
- Solid Rosewood Back&Sides
- Mahogany Neck
- Fishman® Acoustic Matrix™ Pickup
- Fishman® Ellipse® VT Preamp
- Chrome Grover® Tuners
- TUSQ® Compensated Saddle
- Abalone Rosette
- Ebony Bridge & Fretboard
- Abalone Body Binding
- Black High Gloss Finish
- Hardshell Case Included



JSA 5 BK

- Solid Engelmann Spruce Top
- Mahogany Back&Sides
- Mahogany Neck
- Fishman® Sonicores Pickup
- Fishman® Presys™ Preamp w/Onboard Tuner
- Chrome Grover® Tuners
- Abalone Rosette
- Rosewood Bridge & Fretboard
- Black High Gloss Finish



Steve Vai Signature
Euphoria

"The thing I like the most about the EP9 is its user-friendly nature. It's built for versatility to accommodate the style preference of most any player. The anti-feedback option and equalization parameters of the Fishman® Aura® system are truly an evolution in amplified acoustic guitar design. It's quite stunning how well it works, actually. The elements of the solid spruce top, mahogany neck, and the solid mahogany back and sides offer supreme sound quality, but let's not forget the most important thing... it looks as delicious as it sounds and feels."

- Steve Vai -



EP9 RRB

- Solid Engelmann Spruce Top
- Solid Mahogany Back&Sides
- Mahogany (Bolt-On) Neck
- Fishman® Acoustic Matrix™ Pickup
- Fishman® Onboard Aura® Preamp
- Satin Gold Grover® Tuning Machines w/Brown Pearl Button
- Custom Wooden Soundhole Rosette
- Rosewood Bridge & Fretboard
- Yellow Pearloid "Tree Of Life" Inlay
- Resonant Root Beer Low Gloss Finish
- Hardshell Case Included



Fishman® Acoustic Matrix™ Pickup with Ellipse® VT Preamp

JSA10 features the Fishman® Matrix™ pickup with Ellipse® VT preamp. The ergonomic soundhole-mounted design puts slider controls at your fingertips, to maintain a natural playing position. Plus, the unique tone control cuts mid ranges while boosting treble and bass.



Fishman® Sonicores Pickup with Fishman® Presys™ Preamp

JSA5 features Fishman® Sonicores pickup with Presys™ preamp. Its compact, sophisticated Presys™ system features volume, bass, mid and treble controls, a phase switch, and a built-in tuner with LED display. The unique design allows easy battery access.

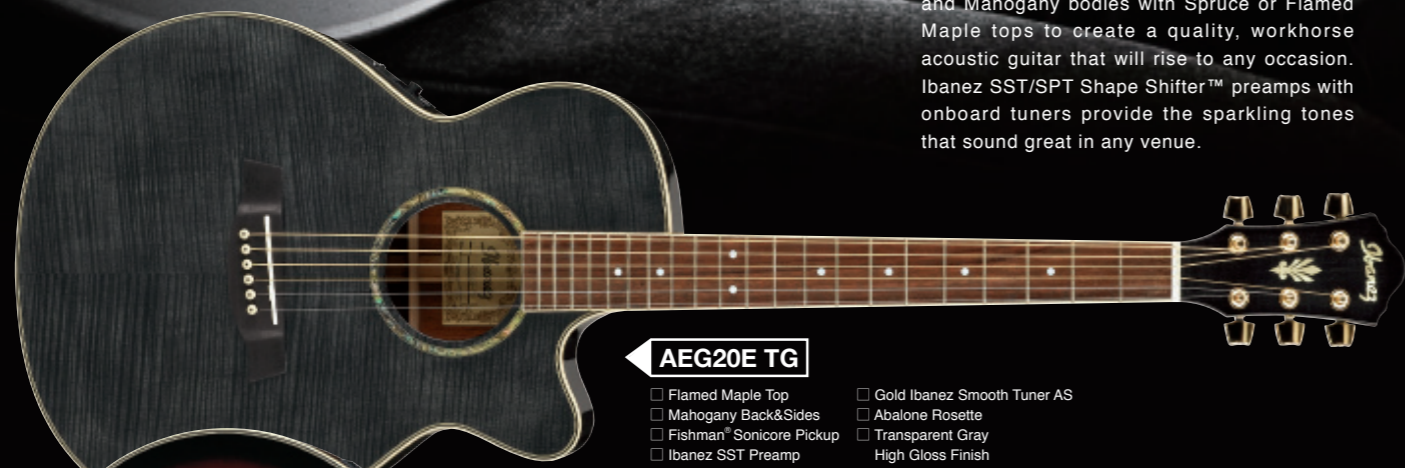


AEG series

All AEG guitars feature

- Ibanez Original AEG Body
- Mahogany Neck
- Rosewood Bridge & Fretboard
- Balanced XLR & 1/4" Outputs

The AEG series' slender, single-cutaway bodies deliver powerful and balanced acoustic sound, unplugged or through an amp or PA system. These guitars combine easy playability, classic solid and sunburst finishes and Mahogany bodies with Spruce or Flamed Maple tops to create a quality, workhorse acoustic guitar that will rise to any occasion. Ibanez SST/SPT Shape Shifter™ preamps with onboard tuners provide the sparkling tones that sound great in any venue.



AEG20E TG

- Flamed Maple Top
- Mahogany Back&Sides
- Fishman® Sonicore Pickup
- Ibanez SST Preamp
- Gold Ibanez Smooth Tuner AS
- Abalone Rosette
- Transparent Gray High Gloss Finish



AEG20E TRS

- Flamed Maple Top
- Mahogany Back&Sides
- Fishman® Sonicore Pickup
- Ibanez SST Preamp
- Gold Ibanez Smooth Tuner AS
- Abalone Rosette
- Transparent Red Sunburst High Gloss Finish



AEG10NE NT

- Nylon Strings
- Spruce Top
- Mahogany Back&Sides
- Fishman® Sonicore Pickup
- Ibanez SST Preamp
- Gold Classical Tuning Machines
- Abalone Rosette
- 14th Fret Neck/Body Joint
- Natural High Gloss Finish



AEG10NE BK

- Nylon Strings
- Spruce Top
- Mahogany Back&Sides
- Fishman® Sonicore Pickup
- Ibanez SST Preamp
- Gold Classical Tuning Machines
- Abalone Rosette
- 14th Fret Neck/Body Joint
- Black High Gloss Finish



AEG10E VS

- Spruce Top
- Mahogany Back&Sides
- Fishman® Sonicore Pickup
- Ibanez SST Preamp
- Chrome Ibanez Smooth Tuner AS
- Abalone Rosette
- Vintage Sunburst High Gloss Finish



AEG10E BK

- Spruce Top
- Mahogany Back&Sides
- Fishman® Sonicore Pickup
- Ibanez SST Preamp
- Chrome Ibanez Smooth Tuner AS
- Abalone Rosette
- Black High Gloss Finish



AEG10E TBS

- Spruce Top
- Mahogany Back&Sides
- Fishman® Sonicore Pickup
- Ibanez SST Preamp
- Chrome Ibanez Smooth Tuner AS
- Abalone Rosette
- Transparent Blue Sunburst High Gloss Finish

AEG series



Ibanez SPT Preamp

The Ibanez SPT preamp on the AEG8E has a 3-band tone control and shape control along with a built-in electronic tuner.

All AEG guitars feature

- Ibanez Original AEG Body
- Mahogany Neck
- Rosewood Bridge & Fretboard
- Balanced XLR & 1/4" Outputs



AEG8E TRS

- Spruce Top
- Agathis Back&Sides
- Ibanez Under Saddle Pickup
- Ibanez SPT Preamp
- Chrome Ibanez Smooth Tuner AS
- Transparent Red Sunburst High Gloss Finish



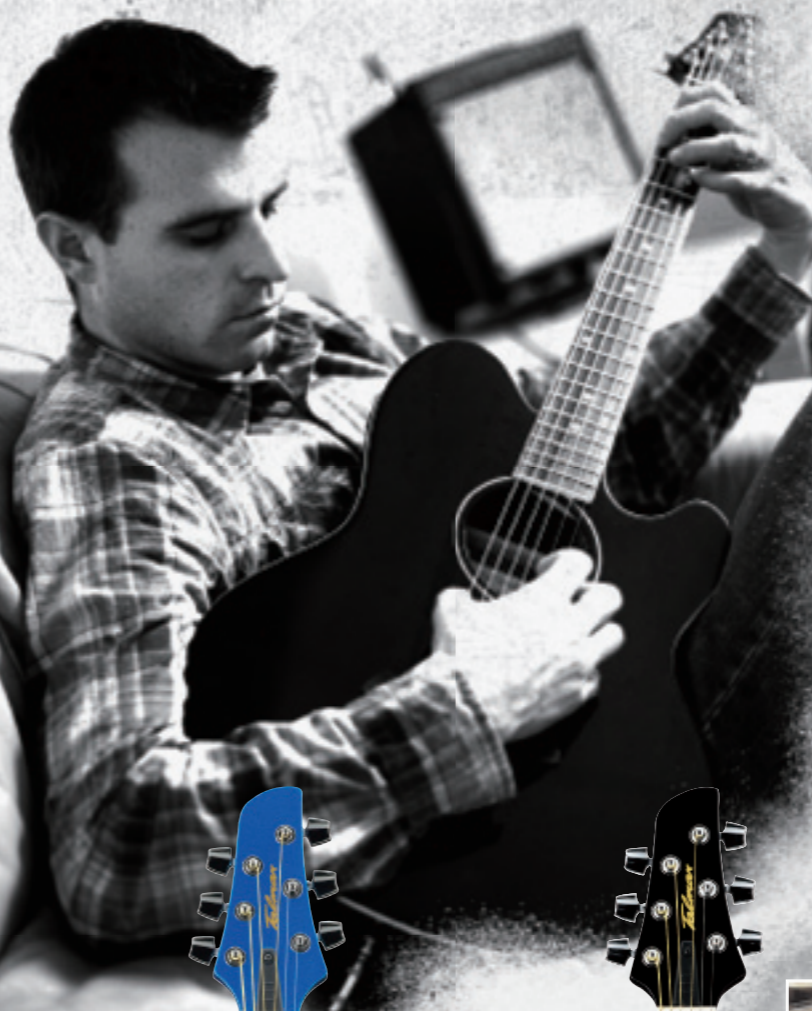
AEG8E NT

- Spruce Top
- Agathis Back&Sides
- Ibanez Under Saddle Pickup
- Ibanez SPT Preamp
- Chrome Ibanez Smooth Tuner AS
- Natural High Gloss Finish



AEG8E BK

- Spruce Top
- Agathis Back&Sides
- Ibanez Under Saddle Pickup
- Ibanez SPT Preamp
- Chrome Ibanez Smooth Tuner AS
- Black High Gloss Finish



Discover your sound

Talman

All Talman guitars feature

- Ibanez Original Talman Body
- Mahogany Neck, Back & Sides
- Ibanez Smooth Tuner AS
- Rosewood Bridge & Fretboard

Our double-cutaway Talmans are perfect for the electric guitarist who wants to gain the full tones of an acoustic guitar without losing the comfort and playability of an electric. TCY models feature the clarity of an under saddle pickup combined with a spruce top. And our TCM model delivers the warm sound of a magnetic soundhole pickup combined with an ash top.



TCY10EDX MB

- Spruce Top
- Ibanez Under Saddle Pickup
- Ibanez AEQ200T Preamp
- Cosmo Black Ibanez Smooth Tuner AS
- Special Shark Tooth Inlay
- Metallic Blue High Gloss Finish



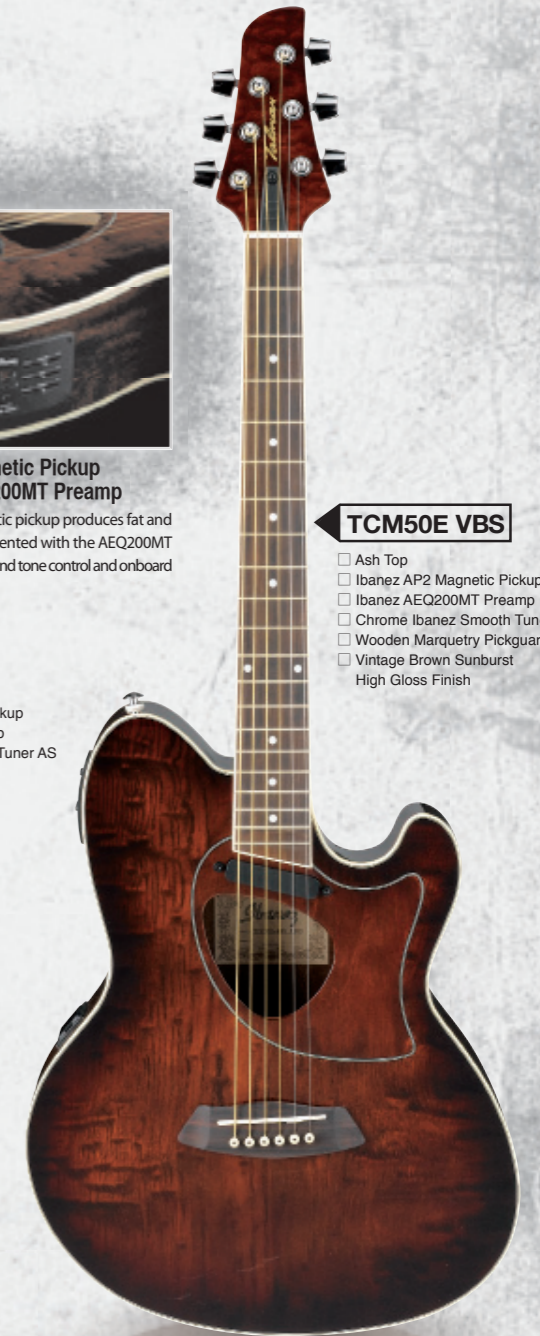
TCY10E BK

- Spruce Top
- Ibanez Under Saddle Pickup
- Ibanez AEQ200T Preamp
- Chrome Ibanez Smooth Tuner AS
- Black High Gloss Finish



Ibanez AP2 Magnetic Pickup and Ibanez AEQ200MT Preamp

The Ibanez AP2 magnetic pickup produces fat and warm sound, complemented with the AEQ200MT preamp, which has a 2-band tone control and onboard tuner as well.



TCM50E VBS

- Ash Top
- Ibanez AP2 Magnetic Pickup
- Ibanez AEQ200MT Preamp
- Chrome Ibanez Smooth Tuner AS
- Wooden Marquetry Pickguard
- Vintage Brown Sunburst High Gloss Finish

AEL series

A large body guitar isn't always what you want if the sound isn't right. The Ibanez AEL series, however, has the size, projection and beautiful tones that you need for any situation. The AEL features Ibanez's largest acoustic guitar body and is an excellent choice for players who want an expansive, natural acoustic sound. Plugged in, the AEL has a B-Band® UST™ pickup w/Ibanez SRTn preamp, delivering a sweet cascade of acoustic tones, never harsh or tinny, ready for any stage.

All AEL guitars feature

- Ibanez Original AEL Body
- Ibanez Smooth Tuner AS
- Mahogany Neck
- Rosewood Bridge & Fretboard
- B-Band® UST™ Pickup
- Balanced XLR & 1/4" Outputs
- Ibanez SRTn Preamp

AEL40SE RVV

- Solid Spruce Top
- Flamed Maple Back&Sides
- Gold Ibanez Smooth Tuner AS
- Abalone Rosette
- Wooden Vine Fretboard Inlay
- Resonant Vintage Violin Low Gloss Finish

AEL40SE RLV

- Solid Spruce Top
- Flamed Maple Back&Sides
- Gold Ibanez Smooth Tuner AS
- Abalone Rosette
- Wooden Vine Fretboard Inlay
- Resonant Natural Low Gloss Finish (Top)
- Vintage Violin Low Gloss Finish (Back&Sides)

AEL20E VV

- Flamed Maple Top
- Maple Back&Sides
- Gold Ibanez Smooth Tuner AS
- Abalone Rosette
- Vintage Violin High Gloss Finish

AEL20E TCS

- Flamed Maple Top
- Maple Back&Sides
- Gold Ibanez Smooth Tuner AS
- Abalone Rosette
- Transparent Black Cherry Sunburst High Gloss Finish

AEL20E TKS

- Flamed Maple Top
- Maple Back&Sides
- Gold Ibanez Smooth Tuner AS
- Abalone Rosette
- Transparent Black Sunburst High Gloss Finish

AEL30SE BK

- Solid Spruce Top
- Mahogany Back&Sides
- Gold Ibanez Smooth Tuner AS
- Abalone Rosette
- Abalone/Pearloid Block Fretboard Inlay
- Black High Gloss Finish

AEL2012E TKS

- 12 Strings
- Flamed Maple Top
- Maple Back&Sides
- Gold Ibanez Smooth Tuner AS
- Abalone Rosette
- Transparent Black Sunburst High Gloss Finish

AEL series

All AEL guitars feature

- Ibanez Original AEL Body
- Mahogany Neck
- B-Band® UST™ Pickup
- Ibanez SRTn Preamp
- Ibanez Smooth Tuner AS
- Rosewood Bridge & Fretboard
- Balanced XLR & 1/4" Outputs



AEL10E MBS

- Spruce Top
- Maple Back&Sides
- Chrome Ibanez Smooth Tuner AS
- Abalone Rosette
- Mystic Blue Sunburst High Gloss Finish



B-Band® UST™ Pickup & Ibanez SRTn Preamp with Notch Filter & Onboard Tuner

The B-Band® UST™ pickup provides incredibly well-balanced and warm acoustic sound reproduction. Getting the right sound every time, no matter what the venue, is made possible by the Ibanez SRTn Preamp. The SRTn's innovative notch filter-equipped feedback reduction system allows high, loud sound levels on-stage without any annoying squeal creeping into the mix. Adjustments are minimal—no more annoying onstage fiddling with your controls—and tuning up is a breeze thanks to the SRTn's convenient onboard tuner.



AEL10E BK

- Spruce Top
- Maple Back&Sides
- Chrome Ibanez Smooth Tuner AS
- Abalone Rosette
- Black High Gloss Finish



AEL10E NT

- Spruce Top
- Maple Back&Sides
- Chrome Ibanez Smooth Tuner AS
- Abalone Rosette
- Natural High Gloss Finish (Top)
- Vintage Violin High Gloss Finish (Back & Sides)

AEB series

Discover your sound

All AEB basses feature

- Ibanez Original AEB Body
- Mahogany Neck
- Rosewood Bridge & Fretboard
- Chrome Die-Cast Tuning Machines
- Balanced XLR & 1/4" Outputs
- 32" scale



AEB8E BK

- Agathis Top
- Agathis Back&Sides
- Ibanez Under Saddle Pickup
- Ibanez SPT Preamp
- Black High Gloss Finish



AEB10E NT

- Spruce Top
- Mahogany Back&Sides
- Fishman® Sonicore Pickup
- Ibanez SST Preamp
- Abalone Rosette
- Natural High Gloss Finish



AEB10E DVS

- Spruce Top
- Mahogany Back&Sides
- Fishman® Sonicore Pickup
- Ibanez SST Preamp
- Abalone Rosette
- Dark Violin Sunburst High Gloss Finish

SAGE series

There's no rule that your first guitar can't sound and look great. The Sage series features two basic body shapes: dreadnought and jumbo. Several beautiful sunburst finishes combined with large, classic pickguards contribute to the Sage's understated vintage styling. In appearance, sound and playability, the Sage series sets a new benchmark in entry-level guitars.

All SAGE guitars feature

- Spruce Top
- Ibanez Smooth Tuner AS
- Rosewood Bridge & Fretboard
- Ibanez Onboard Tuner



SGT AP3 Magnetic Pickup & Ibanez AEQ200MT Preamp

The AP3 magnetic pickup is specially designed to attach to the soundhole of Sage models and produces a fuller, warmer sound. Includes the AEQ200MT preamp, which has a 2-band tone control and onboard tuner as well.



SGT630E HS

- Jumbo Body
- Solid Spruce Top
- Maple Back&Sides
- Maple Neck
- Gold Ibanez Smooth Tuner AS
- Pearlloid Rosette
- Honey Sunburst High Gloss Finish

Discover your sound 



SGT120E HS

- Dreadnought Body
- Spruce Top
- Mahogany Back&Sides
- Mahogany Neck
- Chrome Ibanez Smooth Tuner AS
- Pearlloid Rosette
- Black & White Pearlloid Block Inlay
- Honey Sunburst High Gloss Finish



SGT120E VBS

- Dreadnought Body
- Spruce Top
- Mahogany Back&Sides
- Mahogany Neck
- Chrome Ibanez Smooth Tuner AS
- Pearlloid Rosette
- Black & White Pearlloid Block Inlay
- Vintage Brown Sunburst High Gloss Finish



SGE130 VS

- Jumbo Body
- Spruce Top
- Mahogany Back&Sides
- Mahogany Neck
- Ibanez AP3 Magnetic Pickup
- Ibanez AEQ200MT Preamp
- Chrome Ibanez Smooth Tuner AS
- Pearlloid Rosette
- Vintage Sunburst High Gloss Finish



SGE430 CS

- Jumbo Body
- Spruce Top
- Flamed Maple Back&Sides
- Maple Neck
- Ibanez AP3 Magnetic Pickup
- Ibanez AEQ200MT Preamp
- Gold Ibanez Smooth Tuner AS
- Pearlloid Rosette
- Cherry Sunburst High Gloss Finish



SGT130E VS

- Jumbo Body
- Spruce Top
- Mahogany Back&Sides
- Mahogany Neck
- Chrome Ibanez Smooth Tuner AS
- Pearlloid Rosette
- Vintage Sunburst High Gloss Finish



V series

You could say that our V series provides guitars with a brand name at a price you would expect from a no-name, but V series guitars offer a lot more than ultra affordable prices.

By getting a guitar with the Ibanez name, you also get the assurance of Ibanez quality, sound and set-up. The onboard tuner will be a great help for entry-level players.

- All V guitars feature
- Rosewood Bridge & Fretboard
 - Mahogany Neck



Ibanez Onboard Tuner
The V series features an onboard tuner for instant tuning.

Discover your sound 



V50JRGB NT

- 22" scale
- Small Dreadnought Body
- Spruce Top
- Agathis Back&Sides
- Chrome Covered Tuning Machines
- Natural High Gloss Finish



Gig bag Included



V205SECE VS

- Cutaway Dreadnought Body
- Solid Spruce Top
- Mahogany Back&Sides
- Ibanez Under Saddle Pickup
- Ibanez AEQ200T Preamp w/Built-in Tuner
- Chrome Ibanez Smooth Tuner AS
- Abalone Rosette
- Vintage Sunburst High Gloss Finish



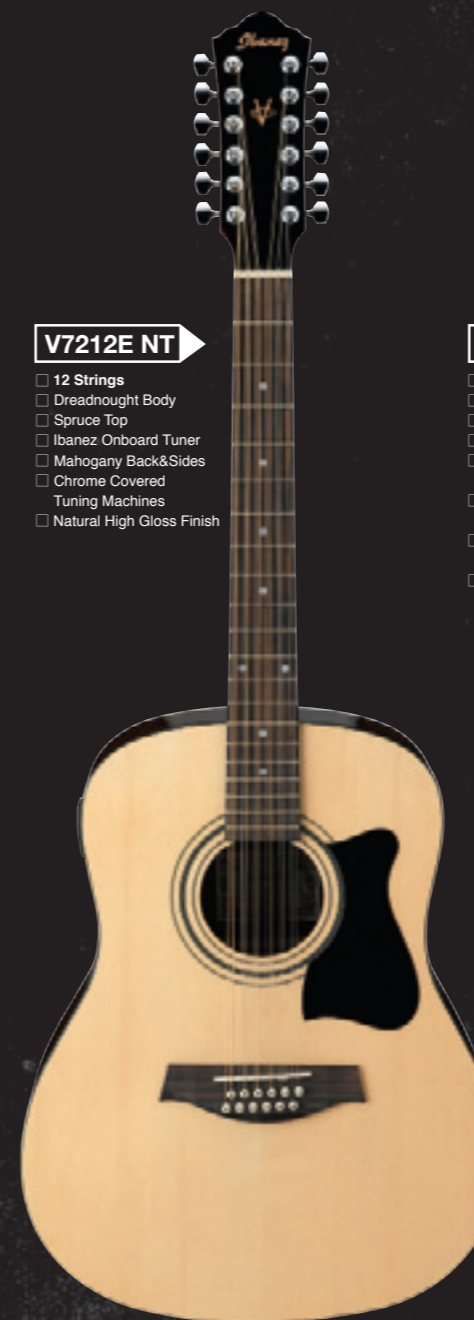
V205SECE NT

- Cutaway Dreadnought Body
- Solid Spruce Top
- Mahogany Back&Sides
- Ibanez Under Saddle Pickup
- Ibanez AEQ200T Preamp w/Built-in Tuner
- Chrome Ibanez Smooth Tuner AS
- Abalone Rosette
- Natural High Gloss Finish



V72E BK

- Dreadnought Body
- Spruce Top
- Ibanez Onboard Tuner
- Mahogany Back&Sides
- Chrome Covered Tuning Machines
- Black High Gloss Finish
- Also Available Natural High Gloss Finish (V72E NT)



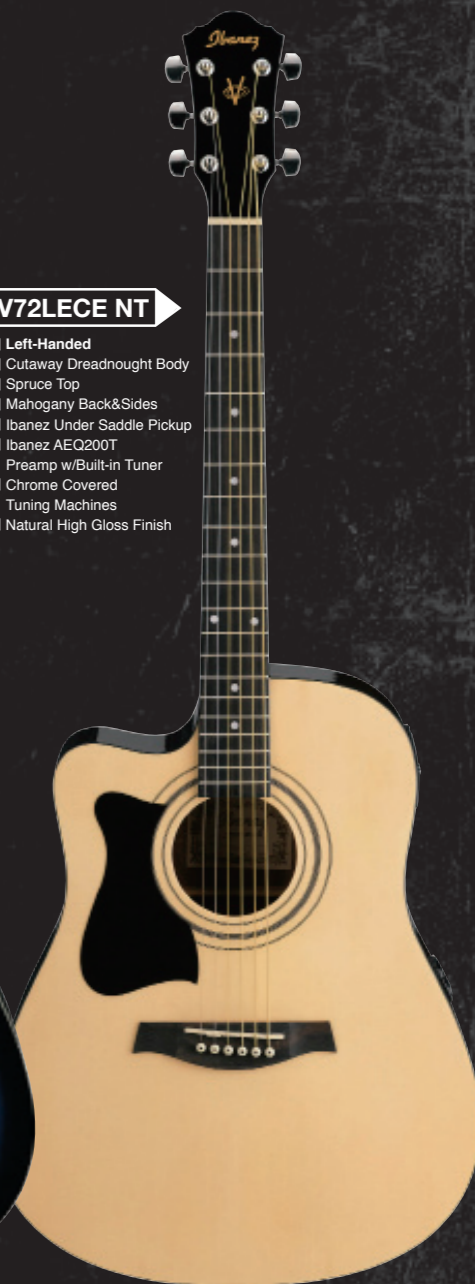
V7212E NT

- 12 Strings
- Dreadnought Body
- Spruce Top
- Ibanez Onboard Tuner
- Mahogany Back&Sides
- Chrome Covered Tuning Machines
- Natural High Gloss Finish



V72ECE TBS

- Cutaway Dreadnought Body
- Spruce Top
- Mahogany Back&Sides
- Ibanez Under Saddle Pickup
- Ibanez AEQ200T Preamp w/Built-in Tuner
- Chrome Covered Tuning Machines
- Transparent Blue Sunburst High Gloss Finish
- Also Available Black/Natural High Gloss Finish (V72ECE BK/NT)



V72LECE NT

- Left-Handed
- Cutaway Dreadnought Body
- Spruce Top
- Mahogany Back&Sides
- Ibanez Under Saddle Pickup
- Ibanez AEQ200T Preamp w/Built-in Tuner
- Chrome Covered Tuning Machines
- Natural High Gloss Finish

G series

Classical guitars offer elegance, refinement and subtlety perhaps found in no other instrument. Additionally, the softness and comfort of the classical guitar's nylon strings have made it a long favorite of beginner guitarists. G series classical guitars retain Old World standards while using today's advanced building techniques and features.



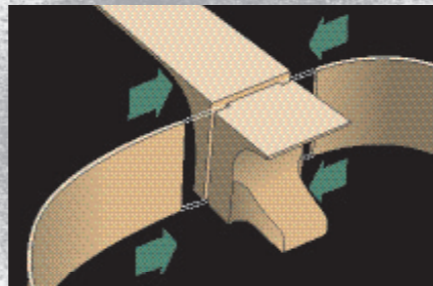
Ibanez AEQ200T Preamp

The Ibanez AEQ200T 2-band tone control with built-in tuner is optimized for use with Ibanez Under Saddle Pickups. The 7 segment LED display enables you to tune, wherever and whenever necessary.



G850 NT

- Classical Body
- Solid Cedar Top
- Solid Mahogany Back&Sides
- Traditional Spanish Joint
- Mahogany Neck
- Ebony Bridge & Fretboard
- Wooden Neck & Body Binding
- Gold Classical Tuning Machines w/Black Button
- Natural High Gloss Finish



Traditional Spanish Joint

The traditional Spanish joint construction on G850 offers more stability and more sustain.



G200ECE NT

- Cutaway Classical Body
- Solid Spruce Top
- Mahogany Back&Sides
- Mahogany Neck
- Rosewood Bridge & Fretboard
- B-Band® UST™ Pickup
- Ibanez SRTn Preamp
- Gold Classical Tuning Machines
- Wooden Neck & Body Binding
- Natural High Gloss Finish



G200E NT

- Classical Body
- Solid Spruce Top
- Mahogany Back&Sides
- Mahogany Neck
- Rosewood Bridge & Fretboard
- Wooden Neck & Body Binding
- Gold Classical Tuning Machines
- Ibanez Onboard Tuner
- Natural High Gloss Finish



G100 NT

- Classical Body
- Solid Spruce Top
- Mahogany Back&Sides
- Mahogany Neck
- Rosewood Bridge & Fretboard
- Chrome Classical Tuning Machines
- Natural High Gloss Finish



G5ECE AM

- Cutaway Classical Body
- Spruce Top
- Mahogany Back&Sides
- Mahogany Neck
- Rosewood Bridge & Fretboard
- Ibanez Under Saddle Pickup
- Ibanez AEQ200T Preamp
- Chrome Classical Tuning Machines
- Amber High Gloss Finish



JAM PACKS

Acoustic Guitar Packages

Perfect for beginning students, Jam Packs come with "Everything You Need to Get Out and Jam!"- guitar, deluxe gig bag, electronic tuner, etc. Ibanez even offers the Jam Pack with a solid top guitar at an affordable price.



V105SJP BK

- Solid Top
- Dreadnought Guitar
- Electronic Tuner
- Gig Bag
- Guitar Strap
- Picks
- Accessories Pouch



V105SJP NT

- Solid Top
- Dreadnought Guitar
- Electronic Tuner
- Gig Bag
- Guitar Strap
- Picks
- Accessories Pouch



V50NJP BK

- Dreadnought Guitar
- Electronic Tuner
- Gig Bag
- Guitar Strap
- Picks
- Accessories Pouch



V50NJP NT

- Dreadnought Guitar
- Electronic Tuner
- Gig Bag
- Guitar Strap
- Picks
- Accessories Pouch



GA3NJP AM

- Classical Guitar
- Electronic Tuner
- Gig Bag
- Accessories Pouch



Classical Guitar Package

All you need is to pick it up and start playing. The Ibanez GA3 Jam Pack comes with a deluxe gig bag, electronic tuner, etc.

Mandolin

The sound of a driving mandolin solo, ringing and crisp, brings to mind the Appalachians and the bittersweet melodies of generations past. The M510E-BS features a magnetic pickup and tone controls to make sure the bright, incomparable sound of the mandolin can be heard in any venue.



M510E BS

- A-Style Body
 - Spruce Top
 - Mahogany Back&Sides
 - Maple Neck
 - Rosewood Bridge & Fretboard
 - Ibanez Original Tailpiece
 - Magnetic Pickup with Volume & Tone Passive Controls
 - Chrome Hardware
 - Brown Sunburst High Gloss Finish
- * WMC case available separately

Bags & Cases

Accept no substitutes! Only genuine Ibanez bags are designed specifically to fit and protect your Ibanez guitars. The Ibanez ultra-deluxe guitar bag not only holds your gear but also does it with style.



W50TCY

Hard shell case for TCY, TCM

W50PC

Hard shell case for AEG, G



ABP

The ingenious Ibanez ABP combination bag features a separable backpack and heavy-padded gig bag.

W50DN

Hard shell case for AW, AEL&EW

W50AE

Hard shell case for Ambiance

W5PC

Hard shell case for AEG

W5DN

Hard shell case for AW, V, AEL&EW



ISABB501 BK

Standard gig bag for acoustic bass, AEB & EWB

ISAB501BK

Standard gig bag for acoustic guitar

ISCB501BK

Standard gig bag for classical guitar

ISAJB501BK

Standard gig bag for jumbo body



IAB701 BK

Ultra-Deluxe Gig Bag

- Water resistant exterior
- Super-thick, soft-padded interior
- Extra-padded backpack straps



Tuners

Both Ibanez clip tuners, PU20 and PU10, are designed to tune electric and acoustic guitars, basses, violins, banjos, mandolins, and more without interference from ambient room noise. It does it all without the use of wires, microphones or pickups. Tuning in noisy environments is a snap because the unique, flexible clamp actually feels the instrument's vibration instead of relying on sound. PU20 features backlit large LCD display for maximum visibility even in the dark stage. PU10 features the 4 hinges that allow a perfect view of the tuner's LED display from nearly any angles. * Black and Silver colors are available in PU10.



PU20

PU10



GU1 GU1 is the first guitar / bass auto tuner with strobe displaying mode. In needle displaying mode, the meter moves the same as the tuner ever. In strobe displaying mode, the meter goes round and tune. The operation is very simple even for beginners.

Stands

ST201
Foldable A-Frame Stand.

ST101 Pocket Stand

Compact but durable, the foldable design allows you to fit it in the pocket of your gig bag.



ST301
Aluminum based, durable guitar stand.

Picks



CE14
CE14M-WH/SH/BK
Medium
CE14H-WH/SH/BK
Heavy

CE4
CE4T-PL/SH/WH/BK
Thin
CE4H-PL/SH/WH/BK
Heavy

CE22L
CE22L-PL
Thumb Pick

GS60
60mm width /1500mm length
GS60L
60mm width /1800mm length

GS60 WR

GS60 MG

GS60 DB

GS60 KI

GS60 BK

Straps

GS260
Trapper Strap
60mm width
1500mm length

GS260 BK

GS260 WH

GS260 RD

GS360 BK
Quick Adjust
60mm width
1500mm length



Simply slide Trapper Strap ends over the guitar's strap button so the button is lodged tight, just above the Ibanez logo.



The Grip Adjuster enables you to find your most comfortable position with one simple operation. By pressing the lever, the Grip Adjuster slides and changes strap length. Sliding the Grip Adjuster down while holding the lever makes the belt shorter and moves the guitar up, while sliding the Grip Adjuster up, will give you the opposite effect.

Amplifiers Troubadour



Total Immersion

What's the one thing that almost all small venue musicians strive for when it comes to amplifiers? Some might say "pure immersive tone", which would undoubtedly be followed by "portability". The new Ibanez T-Series Acoustic Guitar Amplifiers deliver exactly that, along with the striking appearance of a hand-crafted boutique amplifier. Whether you're strumming away at the local coffee shop or playing weekly gigs at a religious venue, the sounds of the T-Series will fill the room. Plus, you won't have to break your back getting your amp in and out. The Ibanez T-Series was designed with portability in mind.



T10 Troubadour

output power 10 w
speaker unit 6.5" Speaker
cabinet Closed Cabinet, Tilt-up System
controls Mid Shape Control
Hue Control
Chorus w/Speed Control
Internal Limiter
i/o's Guitar Input, CD/AUX Input
Headphones/Line Out
size 205(W) x 258(H) x 195(D) (mm)
weight 3.4kg

T20 Troubadour

output power 20 w
speaker unit 8" Coaxial Speaker (with tweeter)
cabinet Sealed Back Cabinet, Tilt-up System
controls 3 Band Eq w/Sweepable Mid
Natural Mode/Shaped Mode
Chorus w/Depth & Speed Control, Reverb
Mic Channel w/Tone Control, Internal Limiter
i/o's Guitar Input, Microphone Input (XLR)
CD/AUX Input, Headphones/Line Out
size 267(W) x 318(H) x 241(D) (mm)
weight 6.6kg

T35 Troubadour

output power 35 w
speaker unit 10" Coaxial Speaker (with tweeter)
cabinet Ported Bass Reflection Cabinet, Tilt-up System
controls 3 Band Eq w/Sweepable Mid
Natural Mode/Shaped Mode
Chorus w/Depth & Speed Control, Reverb
Mic Channel w/Tone Control, Internal Limiter
Guitar Input, Microphone Input (XLR)
CD/AUX Input, Headphones Out, Stereo Balanced
Line Out, Foot Switch Jack (Chorus/Reverb)
size 325(W) x 396(H) x 304(D) (mm)
weight 10.5kg



T35 Troubadour Control Panel

Newly improved Troubadour series feature "Mode" switch on T35 and T20 and "Middle Shape" control on T10, both of which make the tonal character change instantly. Also Troubadour equips the improved onboard chorus with depth and speed control, and MORE!!!