

MOTORS

SPOOL VALVE MOTORS

- Complete range of the highest quality
- Equipped with speed sensors
- Standard or wheel motor
- High efficiency
- European-made



SPOOL VALVE MOTORS

MLHM

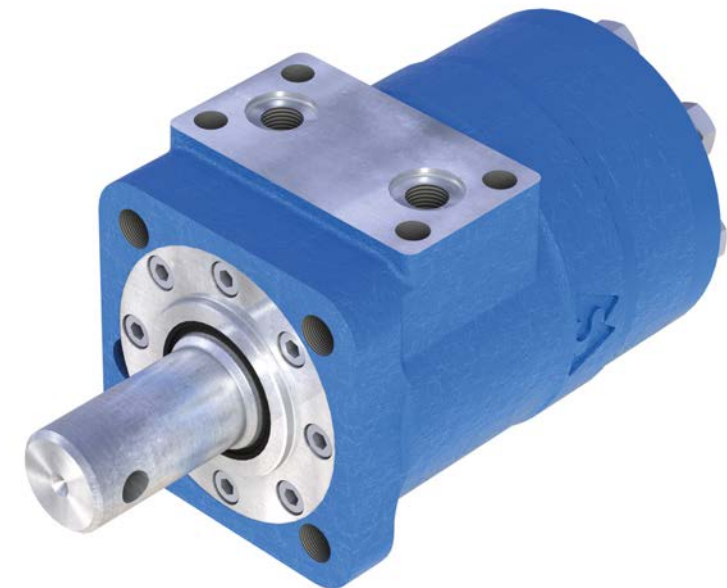
MLHM	Displacement in ³ /rev (cm ³ /rev)	Maximum Δ pressure psi (bar)	Maximum speed RPM	Oil flow USgpm (lpm)	Maximum torque lb·in (daNm)
MLHM8	0,5 (8,2)	1500 (105)	1950	4,2 (16)	106 (1,2)
MLHM12,5	0,79 (12,9)	1500 (105)	1550	5,5 (20)	150 (1,7)
MLHM20	1,22 (20)	1500 (105)	1000	5,5 (20)	230 (2,6)
MLHM32	1,93 (31,8)	1500 (105)	630	5,5 (20)	375 (4,2)
MLHM40	2,44 (40)	1200 (82,5)	500	5,5 (20)	375 (4,2)
MLHM50	3,05 (50)	1015 (70)	400	5,5 (20)	398 (4,5)



SPOOL VALVE MOTORS

HP

HP	Displacement in ³ /rev (cm ³ /rev)	Maximum Δ pressure psi (bar)	Maximum speed RPM	Oil flow USgpm (lpm)	Maximum torque lb·in (daNm)
HP25	1,73 (28,4)	1450 (100)	1055	8 (30)	290 (3,3)
HP32	2,11 (34,5)	1815 (125)	1160	10,5 (40)	460 (5,2)
HP40	2,47 (40,5)	1815 (125)	900	10,5 (40)	575 (6,5)
HP50	3,02 (49,5)	1815 (125)	909	11,9 (45)	717 (8,1)
HP80	4,83 (79,2)	1815 (125)	758	15,9 (60)	1141 (12,9)
HP100	6,04 (99)	1815 (125)	606	15,9 (60)	1434 (16,2)
HP125	7,55 (123,8)	1815 (125)	485	15,9 (60)	1790 (20,2)
HP160	9,66 (158,4)	1670 (115)	379	15,9 (60)	2105 (23,8)
HP200	12,1 (198)	1520 (105)	303	15,9 (60)	2400 (27,1)
HP250	15,1 (247,5)	1450 (100)	242	15,9 (60)	2860 (32,3)
HP315	19,3 (316,8)	1305 (90)	189	15,9 (60)	3290 (37,2)
HP400	24,16 (396)	1160 (80)	152	15,9 (60)	3665 (41,4)



SPOOL VALVE MOTORS

HR

HR	Displacement in ³ /rev (cm ³ /rev)	Maximum Δ pressure psi (bar)	Maximum speed RPM	Oil flow USgpm (lpm)	Maximum torque lb·in (daNm)
HR50	3,14 (51,5)	2030 (140)	777	10,5 (40)	870 (9,8)
HR80	4,9 (80,3)	2030 (140)	747	15,9 (60)	1415 (16)
HR100	6,09 (99,8)	2030 (140)	601	15,9 (60)	1725 (19,5)
HR125	7,48 (122,5)	2030 (140)	490	15,9 (60)	2125 (24)
HR160	9,37 (153,6)	2030 (140)	391	15,9 (60)	2655 (30)
HR200	11,95 (195,8)	1885 (130)	306	15,9 (60)	3097 (35)
HR250	14,95 (245)	1595 (110)	245	15,9 (60)	3275 (37)
HR315	18,67 (306)	1450 (100)	196	15,9 (60)	3720 (42)
HR400	23,56 (386)	1235 (85)	155	15,9 (60)	3980 (45)



SPOOL VALVE MOTORS

MLHP

MLHP and MLHPW	Displacement in ³ /rev (cm ³ /rev)	Maximum Δ pressure psi (bar)	Maximum speed RPM	Oil flow USgpm (lpm)	Maximum torque lb·in (daNm)
MLHP25	1,52 (24,9)	1450 (100)	1600	10,5 (40)	290 (3,3)
MLHP32	1,95 (31,9)	1450 (100)	1560	13,2 (50)	380 (4,3)
MLHP40	2,44 (40)	1750 (120)	1500	15,9 (60)	550 (6,2)
MLHP50	3,02 (49,5)	2030 (140)	1210	15,9 (60)	835 (9,4)
MLHP80	4,83 (79,2)	2030 (140)	755	15,9 (60)	1340 (15,1)
MLHP100	6,04 (99)	2030 (140)	605	15,9 (60)	1710 (19,3)
MLHP125	7,55 (123,8)	2030 (140)	486	15,9 (60)	2100 (23,7)
MLHP160	9,66 (158,4)	2030 (140)	378	15,9 (60)	2770 (31,3)
MLHP200	12,1 (198)	2030 (140)	303	15,9 (60)	4035 (45,6)
MLHP250	15,1 (247,5)	1600 (110)	242	15,9 (60)	5160 (58,3)
MLHP315	19,3 (316,8)	1300 (90)	190	15,9 (60)	4960 (56)
MLHP400	24,16 (396)	1015 (70)	150	15,9 (60)	5240 (59,2)
MLHP500	30,2 (495)	870 (60)	120	15,9 (60)	5045 (57)
MLHP630	38,05 (623,6)	800 (55)	95	15,9 (60)	5665 (64)



SPOOL VALVE MOTORS

MLHR

MLHR	Displacement in ³ /rev (cm ³ /rev)	Maximum Δ pressure psi (bar)	Maximum speed RPM	Oil flow USgpm (lpm)	Maximum torque lb·in (daNm)
MLHR50	3,14 (51,5)	2030 (140)	775	10,5 (40)	900 (10,2)
MLHR80	4,90 (80,3)	2540 (175)	750	15,8 (60)	1725 (19,5)
MLHR100	6,09 (99,8)	2540 (175)	600	15,8 (60)	2125 (24)
MLHR125	7,67 (125,7)	2540 (175)	475	15,8 (60)	2655 (30)
MLHR160	9,74 (159,6)	2540 (175)	375	15,8 (60)	3450 (39)
MLHR200	12,19 (199,8)	2030 (140)	300	15,8 (60)	3410 (38,5)
MLHR250	15,26 (250,1)	1600 (110)	240	15,8 (60)	3450 (39)
MLHR315	19,26 (315,7)	1300 (90)	190	15,8 (60)	3450 (39)
MLHR400	24,4 (397)	1020 (70)	150	15,8 (60)	3360 (38)



SPOOL VALVE MOTORS

MLHPL

MLHPL	Displacement in ³ /rev (cm ³ /rev)	Maximum Δ pressure psi (bar)	Maximum speed RPM	Oil flow USgpm (lpm)	Maximum torque lb·in (daNm)
MLHPL50	3,02 (49,5)	2030 (140)	1210	16 (61)	832 (9,4)
MLHPL80	4,83 (79,2)	2030 (140)	755	16 (61)	1336 (15,1)
MLHPL100	6,04 (99)	2030 (140)	605	16 (61)	1708 (19,3)
MLHPL125	7,55 (123,8)	2030 (140)	485	16 (61)	2100 (23,7)
MLHPL160	9,66 (158,4)	2030 (140)	378	16 (61)	2770 (31,3)
MLHPL200	12,1 (198)	2030 (140)	303	16 (61)	3240 (36,6)
MLHPL250	15,1 (247,5)	2030 (140)	242	16 (61)	4160 (47)
MLHPL315	19,3 (316,8)	1300 (90)	190	16 (61)	4300 (48,6)
MLHPL400	24,16 (396)	1015 (70)	150	16 (61)	4425 (50)



SPOOL VALVE MOTORS

MLHRL

MLHRL	Displacement in ³ /rev (cm ³ /rev)	Maximum Δ pressure psi (bar)	Maximum speed RPM	Oil flow USgpm (lpm)	Maximum torque lb·in (daNm)
MLHRL50	3,14 (51,5)	2030 (140)	775	11 (40)	900 (10,2)
MLHRL80	4,9 (80,3)	2540 (175)	750	15,9 (60)	1770 (20)
MLHRL100	6,09 (99,8)	2540 (175)	600	15,9 (60)	2125 (24)
MLHRL125	7,67 (125,7)	2540 (175)	475	15,9 (60)	2655 (30)
MLHRL160	9,74 (159,6)	2540 (175)	375	15,9 (60)	3450 (39)
MLHRL200	12,19 (199,8)	2540 (175)	300	15,9 (60)	4000 (45)
MLHRL250	15,26 (250,1)	2540 (175)	240	15,9 (60)	4780 (54)
MLHRL315	19,26 (315,7)	1960 (135)	190	15,9 (60)	4870 (55)
MLHRL400	24,4 (397)	1670 (115)	150	15,9 (60)	5400 (61)



MLHH

MLHH	Displacement in ³ /rev (cm ³ /rev)	Maximum Δ pressure psi (bar)	Maximum speed RPM	Oil flow USgpm (lpm)	Maximum torque lb·in (daNm)
MLHH200	12,3 (201,3)	2540 (175)	370	19,8 (75)	4510 (51)
MLHH250	15,4 (252)	2540 (175)	295	19,8 (75)	5398 (61)
MLHH315	19,2 (314,9)	2540 (175)	235	19,8 (75)	6548 (74)
MLHH400	24,2 (396,8)	2240 (155)	185	19,8 (75)	7434 (84)
MLHH500	30,7 (502,4)	1740 (120)	150	19,8 (75)	7257 (82)



SPOOL VALVE MOTORS

HW

HW	Displacement in ³ /rev (cm ³ /rev)	Maximum Δ pressure psi (bar)	Maximum speed RPM	Oil flow USgpm (lpm)	Maximum torque lb·in (daNm)
HW125	7,69 (126)	2970 (205)	357	12 (45)	3098 (35)
HW160	9,64 (157,8)	2970 (205)	380	15,9 (60)	3894 (44)
HW200	12,28 (201,3)	2970 (205)	373	20 (76)	4868 (55)
HW235	14,33 (235,3)	2970 (205)	319	20 (76)	5710 (64,5)
HW250	15,37 (252)	2970 (205)	298	20 (76)	6107 (69)
HW300	18,3 (300)	2970 (205)	250	20 (76)	7170 (81)
HW315	19,21 (314,9)	2970 (205)	238	20 (76)	7523 (85)
HW350	21,21 (347,8)	2970 (205)	216	20 (76)	8320 (94)
HW370	22,51 (369,2)	2970 (205)	203	20 (76)	8497 (96)
HW400	24,2 (396,8)	2680 (185)	189	20 (76)	8497 (96)
HW470	28,71 (470,6)	2180 (150)	159	20 (76)	8143 (92)
HW500	30,65 (502,4)	2030 (140)	149	20 (76)	8054 (91)
HW535	32,7 (535)	1885 (130)	140	20 (76)	7966 (90)
HW550	33,55 (550)	1815 (125)	136	20 (76)	7877 (89)



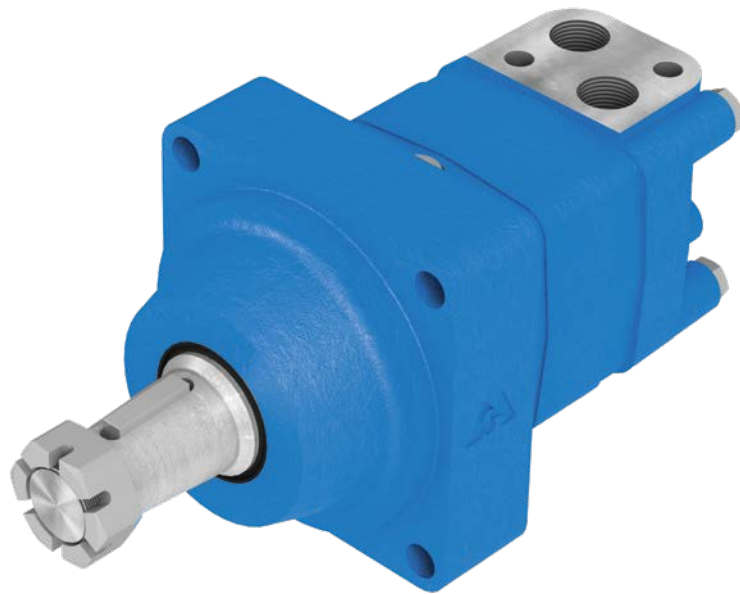
DISC VALVE MOTORS



DISC VALVE MOTORS

MLHS

MLHS	Displacement in ³ /rev (cm ³ /rev)	Maximum Δ pressure psi (bar)	Maximum speed RPM	Oil flow USgpm (lpm)	Maximum torque lb·in (daNm)
MLHS80	4,91 (80,5)	3050 (210)	810	17 (65)	2120 (24)
MLHS100	6,1 (100)	3050 (210)	750	20 (75)	2700 (30,5)
MLHS125	7,67 (125,7)	3050 (210)	600	20 (75)	3320 (37,5)
MLHS160	9,74 (159,7)	3050 (210)	470	20 (75)	4340 (49)
MLHS200	12,2 (200)	3050 (210)	375	20 (75)	5400 (61)
MLHS250	15,3 (250)	2900 (200)	300	20 (75)	6370 (72)
MLHS315	19,2 (314,9)	2900 (200)	240	20 (75)	7300 (82,5)
MLHS400	24,2 (397)	2320 (160)	190	20 (75)	7660 (86,5)
MLHS475	28,96 (474,6)	1880 (130)	160	20 (75)	7520 (85)
MLHS525	31,88 (522,7)	1670 (115)	145	20 (75)	7520 (85)
MLHS565	34,47 (564,9)	1520 (105)	130	20 (75)	7520 (85)



DISC VALVE MOTORS

MLHSY

MLHSY	Displacement in ³ /rev (cm ³ /rev)	Maximum Δ pressure psi (bar)	Maximum speed RPM	Oil flow USgpm (lpm)	Maximum torque lb·in (daNm)
MLHSY200	12,2 (200)	2900 (200)	375	20 (75)	5010 (56,6)
MLHSY250	15,3 (250)	2900 (200)	300	20 (75)	6270 (70,8)
MLHSY315	19,2 (314,9)	2900 (200)	240	20 (75)	7965 (90)
MLHSY400	24,2 (397)	2320 (160)	185	20 (75)	7965 (90)
MLHSY475	28,96 (474,6)	2230 (140)	155	20 (75)	8055 (91)



MYZ

MYZ	Displacement in ³ /rev (cm ³ /rev)	Maximum Δ pressure psi (bar)	Maximum speed RPM	Oil flow USgpm (lpm)	Maximum torque lb·in (daNm)
MYZ160	9,63 (157,9)	3050 (210)	570	21,1 (80)	3760 (42,5)
MYZ200	12,28 (201,3)	3050 (210)	445	21,1 (80)	4850 (55)
MYZ250	15,38 (252,2)	3050 (210)	355	21,1 (80)	6200 (70)
MYZ315	19,2 (314,9)	3050 (210)	285	21,1 (80)	7520 (85)
MYZ400	24,2 (396,8)	3050 (210)	225	21,1 (80)	8580 (97)
MYZ500	30,65 (502,4)	3050 (210)	175	21,1 (80)	8700 (98)
MYZ560	33,55 (550)	3050 (210)	160	21,1 (80)	8054 (91)



DISC VALVE MOTORS

MLHT

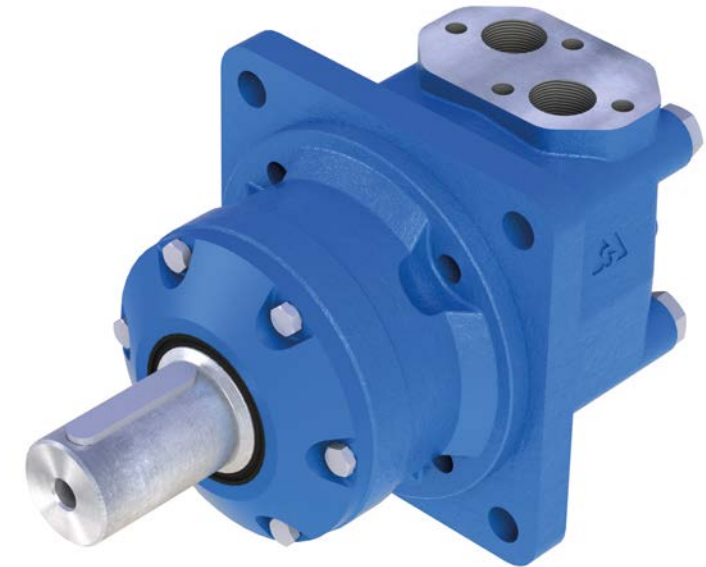
MLHT	Displacement in ³ /rev (cm ³ /rev)	Maximum Δ pressure psi (bar)	Maximum speed RPM	Oil flow USgpm (lpm)	Maximum torque lb·in (daNm)
MLHT160	9,83 (161,1)	2900 (200)	622	26,4 (100)	4160 (47)
MLHT200	12,29 (201,4)	2900 (200)	620	33 (125)	5220 (59)
MLHT250	15,36 (251,8)	2900 (200)	496	33 (125)	6460 (73)
MLHT315	19,9 (326,3)	2900 (200)	382	33 (125)	8410 (95)
MLHT400	25,06 (410,9)	2600 (180)	304	33 (125)	9560 (108)
MLHT500	31,95 (523,6)	2300 (160)	238	33 (125)	10800 (122)
MLHT630	38,52 (631,2)	2010 (140)	197	33 (125)	11500 (130)
MLHT725	44,2 (724,3)	1740 (120)	172	33 (125)	11240 (127)



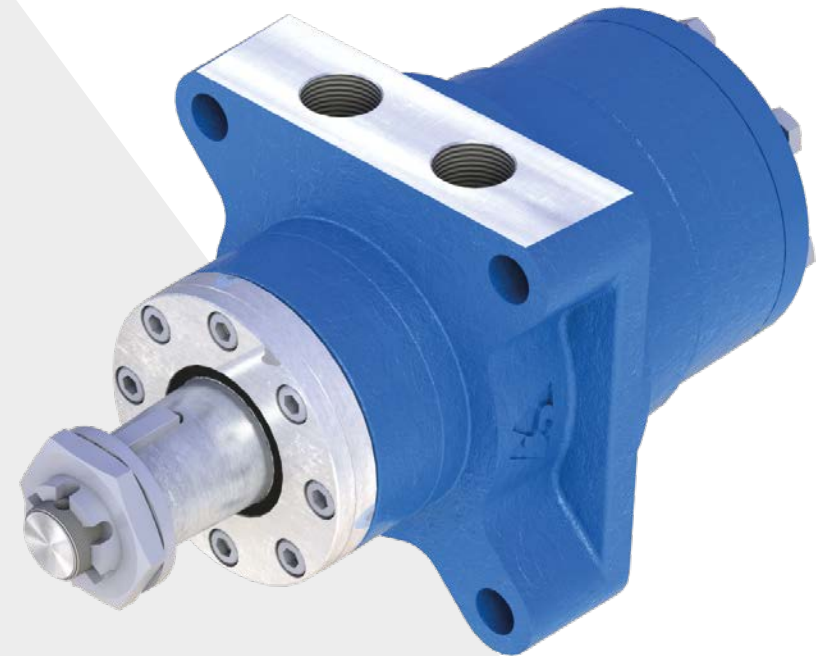
DISC VALVE MOTORS

MLHV

MLHV	Displacement in ³ /rev (cm ³ /rev)	Maximum Δ pressure psi (bar)	Maximum speed RPM	Oil flow USgpm (lpm)	Maximum torque lb·in (daNm)
MLHV315	19,18 (314,5)	2900 (200)	510	42,3 (160)	8150 (92)
MLHV400	24,45 (400,9)	2900 (200)	500	52,8 (200)	10450 (118)
MLHV500	30,48 (499,6)	2900 (200)	480	52,8 (200)	12950 (146)
MLHV630	38,38 (629,1)	2600 (180)	380	52,8 (200)	14700 (166)
MLHV800	48,91 (801,8)	2320 (160)	300	52,8 (200)	16650 (188)



SPOOL VALVE AND DISC VALVE WHEEL MOTORS



SPOOL VALVE AND DISC VALVE WHEEL MOTORS

MLHRW - SPOOL VALVE WHEEL MOTORS

MLHRW	Displacement in ³ /rev (cm ³ /rev)	Maximum Δ pressure psi (bar)	Maximum speed RPM	Oil flow USgpm (lpm)	Maximum torque lb·in (daNm)
MLHRW50	3,14 (51,5)	2030 (140)	775	11 (40)	900 (10,2)
MLHRW80	4,9 (80,3)	2540 (175)	750	15,9 (60)	1770 (20)
MLHRW100	6,09 (99,8)	2540 (175)	600	15,9 (60)	2125 (24)
MLHRW125	7,67 (125,7)	2540 (175)	475	15,9 (60)	2655 (30)
MLHRW160	9,74 (159,6)	2540 (175)	375	15,9 (60)	3450 (39)
MLHRW200	12,19 (199,8)	2540 (175)	300	15,9 (60)	4000 (45)
MLHRW250	15,26 (250,1)	2540 (175)	300	19,8 (75)	4780 (54)
MLHRW315	19,26 (315,7)	1960 (135)	240	19,8 (75)	4870 (55)
MLHRW400	24,4 (397)	1600 (110)	190	19,8 (75)	5400 (61)



MEW - DISC VALVE WHEEL MOTORS

MEW	Displacement in ³ /rev (cm ³ /rev)	Maximum Δ pressure psi (bar)	Maximum speed RPM	Oil flow USgpm (lpm)	Maximum torque lb·in (daNm)
MEW100	6,09 (99,8)	2900 (200)	600	15,9 (60)	2213 (25)
MEW125	7,67 (127,5)	2900 (200)	475	15,9 (60)	2830 (32)
MEW160	9,74 (159,6)	2900 (200)	375	15,9 (60)	3630 (41)
MEW200	12,09 (198,2)	2680 (185)	300	15,9 (60)	4160 (47)
MEW250	15,14 (248,1)	2320 (160)	240	15,9 (60)	4515 (51)
MEW315	18,92 (310,1)	1885 (130)	190	15,9 (60)	4602 (52)



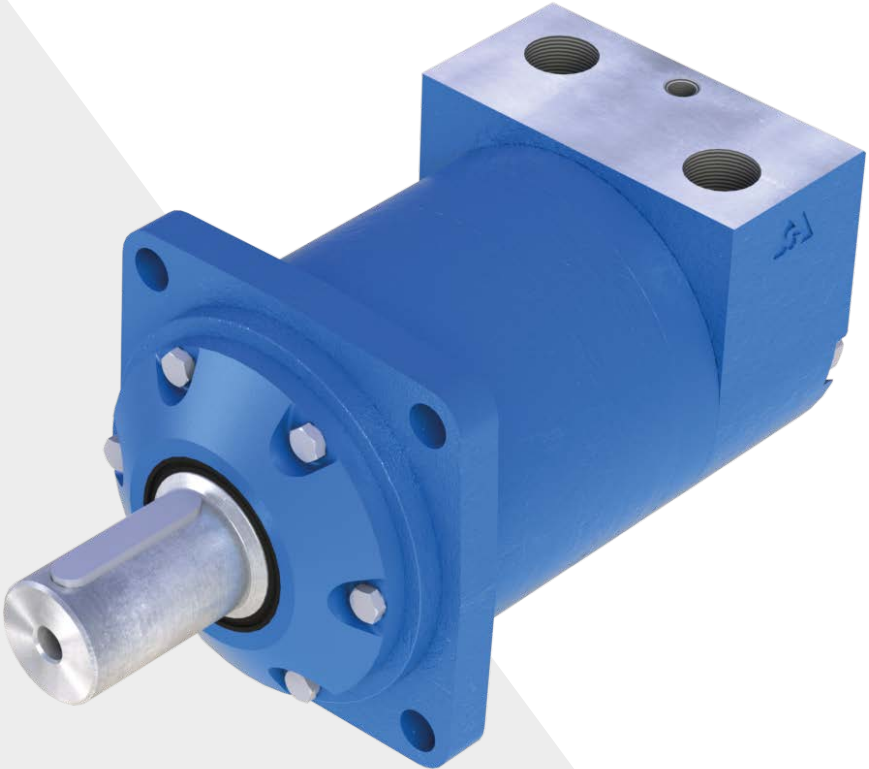
SPOOL VALVE AND DISC VALVE WHEEL MOTORS

MLHHW - DISC VALVE WHEEL MOTORS

MLHHW	Displacement in ³ /rev (cm ³ /rev)	Maximum Δ pressure psi (bar)	Maximum speed RPM	Oil flow USgpm (lpm)	Maximum torque lb·in (daNm)
MLHHW125	7,7 (126)	2970 (205)	357	11,9 (45)	3100 (35)
MLHHW160	9,7 (157,8)	2970 (205)	380	15,9 (60)	3900 (44)
MLHHW200	12,3 (201,3)	2970 (205)	373	19,8 (75)	4870 (55)
MLHHW235	14,4 (235,3)	2970 (205)	319	19,8 (75)	5710 (64,5)
MLHHW250	15,4 (252)	2970 (205)	298	19,8 (75)	6110 (69)
MLHHW300	18,3 (300)	2970 (205)	250	19,8 (75)	7200 (81)
MLHHW315	16,4 (314,5)	2970 (205)	238	19,8 (75)	7520 (85)
MLHHW350	21,2 (347,8)	2970 (205)	216	19,8 (75)	8230 (94)
MLHHW370	22,5 (369,2)	2970 (205)	203	19,8 (75)	8500 (96)
MLHHW400	24,2 (396,8)	2680 (185)	189	19,8 (75)	8500 (96)
MLHHW470	28,7 (470,6)	2175 (150)	159	19,8 (75)	8140 (92)
MLHHW500	30,7 (502,4)	2100 (140)	149	19,8 (75)	8055 (91)
MLHHW535	32,6 (535)	1885 (130)	140	19,8 (75)	7965 (90)
MLHHW550	33,6 (550)	1810 (125)	136	19,8 (75)	7880 (89)



HEAVY-DUTY MOTORS



DISC VALVE HEAVY-DUTY MOTORS

MTK

MTK	Displacement in ³ /rev (cm ³ /rev)	Maximum Δ pressure psi (bar)	Maximum speed RPM	Oil flow USgpm (lpm)	Maximum torque lb·in (daNm)
MTK160	9,63 (157,8)	3626 (250)	505	21,1 (80)	5045 (57)
MTK200	12,28 (201,2)	3626 (250)	400	21,1 (80)	6373 (72)
MTK250	15,38 (252)	3626 (250)	320	21,1 (80)	8055 (91)
MTK315	19,2 (314,6)	3626 (250)	255	21,1 (80)	9293 (105)
MTK400	24,2 (396,6)	2900 (200)	200	21,1 (80)	9470 (107)
MTK470	28,7 (470,3)	2320 (160)	170	21,1 (80)	9028 (102)
MTK500	30,65 (502,3)	2320 (160)	159	21,1 (80)	9648 (109)



MLHTM

MLHTM	Displacement in ³ /rev (cm ³ /rev)	Maximum Δ pressure psi (bar)	Maximum speed RPM	Oil flow USgpm (lpm)	Maximum torque lb·in (daNm)
MLHTM200	12,29 (201,4)	3920 (270)	625	33 (125)	6550 (74)
MLHTM250	15,36 (251,8)	3920 (270)	500	33 (125)	7965 (90)
MLHTM315	19,9 (326,3)	3920 (270)	380	33 (125)	10265 (116)
MLHTM400	25,06 (410,9)	3920 (270)	305	33 (125)	13010 (147)
MLHTM470	28,97 (475)	3920 (270)	260	33 (125)	15135 (171)
MLHTM500	31,95 (523,6)	3920 (270)	240	33 (125)	15225 (172)
MLHTM630	38,52 (631,2)	3920 (270)	190	33 (125)	16200 (183)
MLHTM725	44,2 (724)	3920 (270)	170	33 (125)	14160 (160)



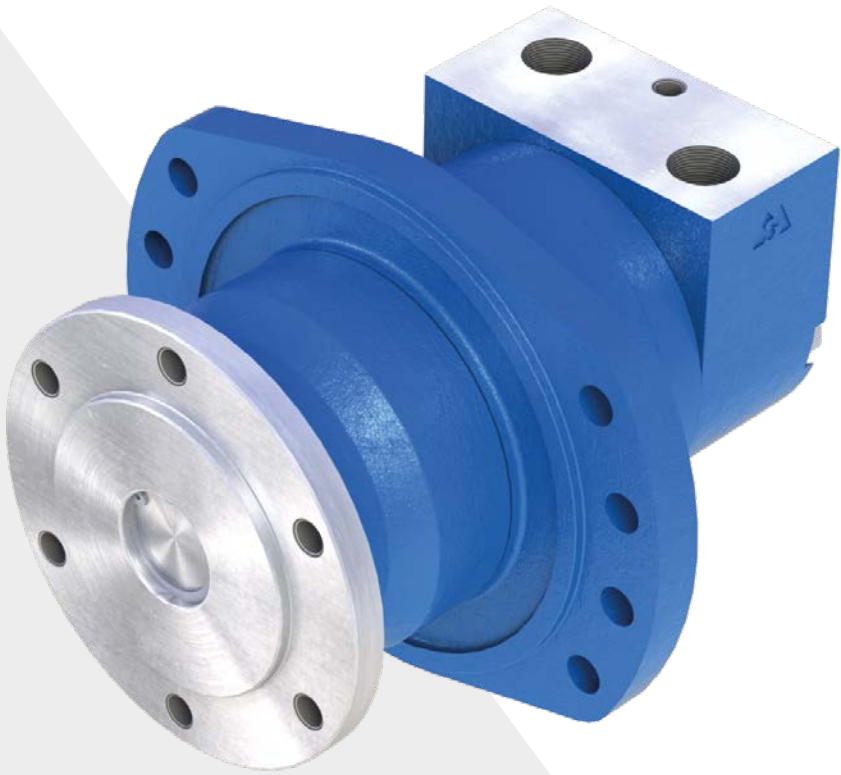
DISC VALVE HEAVY-DUTY MOTORS

MVM

MVM	Displacement in ³ /rev (cm ³ /rev)	Maximum Δ pressure psi (bar)	Maximum speed RPM	Oil flow USgpm (lpm)	Maximum torque lb·in (daNm)
MVM315	19,18 (314,5)	3630 (250)	636	52,8 (200)	10180 (115)
MVM400	24,5 (400,9)	3630 (250)	500	52,8 (200)	12745 (144)
MVM500	30,5 (499,6)	3630 (250)	400	52,8 (200)	15930 (180)
MVM630	38,38 (629,1)	3630 (250)	315	52,8 (200)	20090 (227)
MVM800	48,91 (801,8)	3263 (225)	250	52,8 (200)	22920 (259)



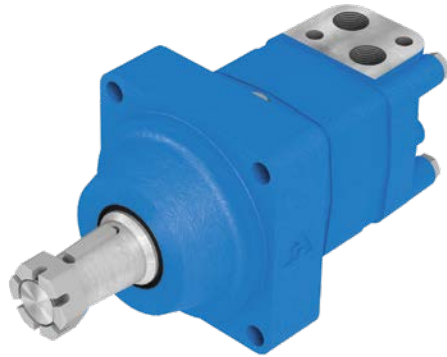
HEAVY-DUTY
WHEEL MOTORS



HEAVY-DUTY WHEEL MOTORS

MLHSEM

MLHSEM	Displacement in ³ /rev (cm ³ /rev)	Maximum Δ pressure psi (bar)	Maximum speed RPM	Oil flow USgpm (lpm)	Maximum torque lb·in (daNm)
MLHSEM160	9,74 (159,7)	2900 (200)	470	20 (75)	4070 (46)
MLHSEM200	12,2 (200)	2900 (200)	375	20 (75)	5010 (56,6)
MLHSEM250	15,3 (250)	2900 (200)	300	20 (75)	6270 (70,8)
MLHSEM315	314,9 (19,2)	2900 (200)	240	20 (75)	7965 (90)
MLHSEM400	24,2 (397)	2320 (160)	185	20 (75)	7965 (90)



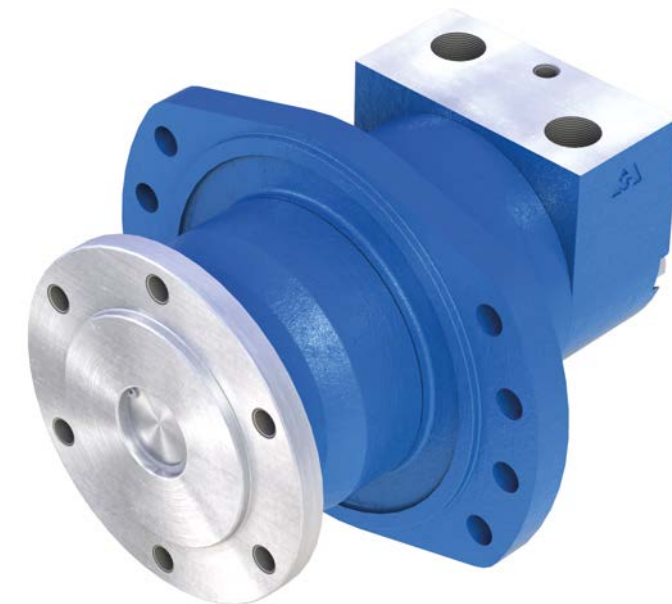
TMFA

TMFA	Displacement in ³ /rev (cm ³ /rev)	Maximum Δ pressure psi (bar)	Maximum speed RPM	Oil flow USgpm (lpm)	Maximum torque lb·in (daNm)
TMFA200	12,29 (201,4)	3600 (250)	625	33 (125)	6550 (74)
TMFA250	15,36 (251,8)	3600 (250)	500	33 (125)	7965 (90)
TMFA315	19,9 (326,3)	3600 (250)	380	33 (125)	10265 (116)
TMFA400	25,06 (410,9)	3600 (250)	305	33 (125)	13010 (147)
TMFA470	28,97 (475)	3600 (250)	260	33 (125)	15135 (171)
TMFA500	31,95 (523,6)	3340 (230)	240	33 (125)	15225 (172)
TMFA630	38,52 (631,2)	2900 (200)	190	33 (125)	16200 (183)
TMFA725	44,2 (724)	2320 (160)	170	33 (125)	14160 (160)

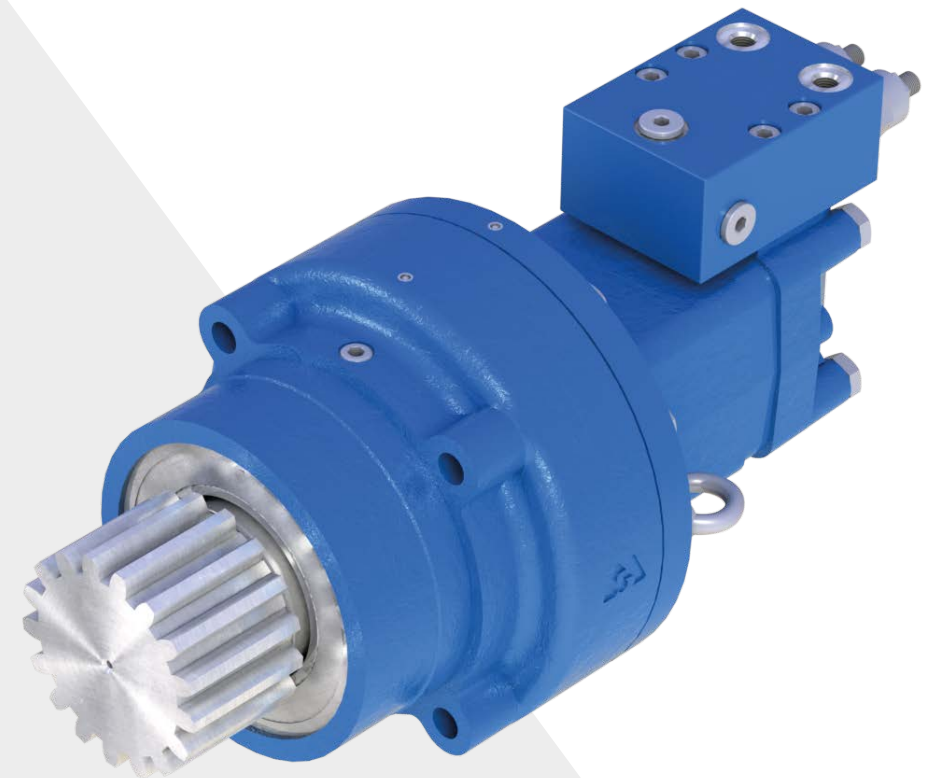
HEAVY-DUTY WHEEL MOTORS

VMF

VMF	Displacement in ³ /rev (cm ³ /rev)	Maximum Δ pressure psi (bar)	Maximum speed RPM	Oil flow USgpm (lpm)	Maximum torque lb·in (daNm)
VMF315	19,18 (314,5)	3630 (250)	636	52,8 (200)	10180 (115)
VMF400	24,5 (400,9)	3630 (250)	500	52,8 (200)	12745 (144)
VMF500	30,5 (499,6)	3630 (250)	400	52,8 (200)	15930 (180)
VMF630	38,38 (629,1)	3630 (250)	315	52,8 (200)	20090 (227)
VMF800	48,91 (801,8)	3263 (225)	250	52,8 (200)	22920 (259)



SPOOL VALVE AND DISC VALVE MOTOR-BRAKES



SPOOL VALVE AND DISC VALVE MOTOR-BRAKES

B/MLHR - SPOOL VALVE MOTOR-BRAKES

B/MLHR	Displacement in ³ /rev (cm ³ /rev)	Maximum Δ pressure psi (bar)	Maximum speed RPM	Oil flow USgpm (lpm)	Maximum torque lb·in (daNm)
B/MLHR80	4,9 (80,3)	2538 (175)	500	10,5 (40)	1725 (19,5)
B/MLHR100	6,09 (99,8)	2538 (175)	500	13,2 (50)	2125 (24)
B/MLHR125	7,67 (125,7)	2538 (175)	475	15,9 (60)	2655 (30)
B/MLHR160	9,74 (159,6)	1960 (135)	375	15,9 (60)	2655 (30)
B/MLHR200	12,19 (199,8)	1523 (105)	300	15,9 (60)	2655 (30)
B/MLHR250	15,26 (250,1)	1233 (85)	240	15,9 (60)	2655 (30)
B/MLHR315	19,26 (315,7)	942 (65)	190	15,9 (60)	2655 (30)
B/MLHR400	24,4 (397)	652 (45)	150	15,9 (60)	2655 (30)



B/HR - SPOOL VALVE MOTOR-BRAKES

B/HR	Displacement in ³ /rev (cm ³ /rev)	Maximum Δ pressure psi (bar)	Maximum speed RPM	Oil flow USgpm (lpm)	Maximum torque lb·in (daNm)
B/HR80	4,9 (80,3)	2030 (140)	500	10,6 (40)	1390 (15,7)
B/HR100	6,09 (99,8)	2030 (140)	500	13 (50)	1750 (19,8)
B/HR125	7,67 (125,7)	2030 (140)	475	16 (60,6)	2210 (25)
B/HR160	9,74 (159,6)	2030 (140)	375	16 (60,6)	2830 (32)
B/HR200	12,19 (199,8)	1810 (125)	300	16 (60,6)	3045 (34,4)
B/HR250	15,26 (250,1)	1595 (110)	240	16 (60,6)	3540 (40)
B/HR315	19,26 (315,7)	1450 (100)	190	16 (60,6)	3850 (43,5)
B/HR400	24,23 (397)	1305 (90)	150	16 (60,6)	4250 (48)



SPOOL VALVE AND DISC VALVE MOTOR-BRAKES

MT/B - DISC VALVE MOTOR-BRAKES

MT/B and MT/BX	Displacement in ³ /rev (cm ³ /rev)	Maximum Δ pressure psi (bar)	Maximum speed RPM	Oil flow USgpm (lpm)	Maximum torque lb·in (daNm)
MT/B160	9,83 (161,1)	2900 (200)	625	26,5 (100)	4160 (47)
MT/B200	12,29 (201,4)	2900 (200)	625	33 (125)	5220 (59)
MT/B250	15,36 (251,4)	2900 (200)	500	33 (125)	6460 (73)
MT/B315	19,9 (326,3)	2900 (200)	380	33 (125)	8410 (95)
MT/B400	25,06 (410,9)	2600 (180)	305	33 (125)	9560 (108)
MT/B500	31,95 (523,6)	2300 (160)	240	33 (125)	10800 (122)



SPOOL VALVE AND DISC VALVE MOTOR-BRAKES

SPOOL VALVE WHEEL MOTOR-BRAKES - RWB

RWB	Displacement in ³ /rev (cm ³ /rev)	Maximum Δ pressure psi (bar)	Maximum speed RPM	Oil flow USgpm (lpm)	Maximum torque lb·in (daNm)
RWB50	3,14 (51,5)	2030 (140)	775	10,6 (40)	885 (10)
RWB80	4,9 (80,3)	2540 (175)	750	15,9 (60)	1770 (20)
RWB100	6,09 (99,8)	2540 (175)	600	15,9 (60)	2124 (24)
RWB125	7,67 (125,7)	2540 (175)	475	15,9 (60)	2655 (30)
RWB160	9,74 (159,6)	2540 (175)	375	15,9 (60)	3452 (39)
RWB200	12,19 (199,8)	2540 (175)	300	15,9 (60)	3983 (45)
RWB250	15,26 (250,1)	2540 (175)	240	15,9 (60)	4779 (54)
RWB315	19,27 (315,7)	1960 (135)	190	15,9 (60)	4868 (55)
RWB400	24,4 (393)	1595 (110)	150	15,9 (60)	5399 (61)



SPOOL VALVE WHEEL MOTOR-BRAKES - HW/B

HW/B	Displacement in ³ /rev (cm ³ /rev)	Maximum Δ pressure psi (bar)	Maximum speed RPM	Oil flow USgpm (lpm)	Maximum torque lb·in (daNm)
HW/B125	7,69 (126)	2973 (205)	357	12 (45)	3009 (34)
HW/B160	9,64 (157,8)	2973 (205)	380	16 (60)	3780 (42,7)
HW/B200	12,28 (201,3)	2973 (205)	298	18,5 (70)	4726 (53,4)
HW/B235	14,33 (235,3)	2973 (205)	255	18,5 (70)	5540 (62,6)
HW/B250	15,37 (252)	2973 (205)	238	20 (75)	5921 (66,9)
HW/B300	18,3 (300)	2973 (205)	200	20 (75)	6957 (78,6)
HW/B315	19,21 (314,9)	2973 (205)	190	20 (75)	7293 (82,4)
HW/B350	21,21 (347,8)	2973 (205)	172	20 (75)	8071 (91,2)
HW/B370	22,51 (369,2)	2900 (200)	162	20 (75)	8240 (93,1)
HW/B400	24,2 (396,8)	2683 (185)	151	20 (75)	8249 (93,2)
HW/B470	28,71 (470,6)	2176 (150)	127	20 (75)	7895 (89,2)
HW/B500	30,65 (502,4)	2030 (140)	119	20 (75)	7815 (88,3)
HW/B535	32,7 (535)	1885 (130)	112	20 (75)	7707 (87,2)
HW/B550	33,55 (550)	1813 (125)	109	20 (75)	7638 (86,3)

SPOOL VALVE AND DISC VALVE MOTOR-BRAKES

SW + TW - DISC VALVE WHEEL MOTOR-BRAKES

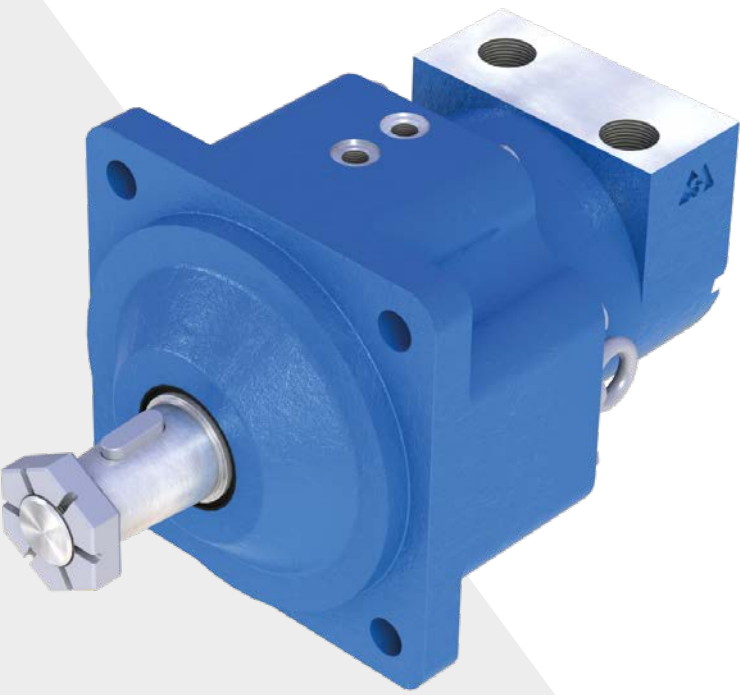
SW	Displacement in ³ /rev (cm ³ /rev)	Maximum Δ pressure psi (bar)	Maximum speed RPM	Oil flow USgpm (lpm)	Maximum torque lb·in (daNm)
SW500	29 (475,3)	1800 (125)	16	2 (8)	7260 (82)



TW	Displacement in ³ /rev (cm ³ /rev)	Maximum Δ pressure psi (bar)	Maximum speed RPM	Oil flow USgpm (lpm)	Maximum torque lb·in (daNm)
TW500	29 (475)	2500 (170)	40	5,3 (20)	10000 (114)



HEAVY-DUTY
WHEEL MOTOR-BRAKES



DISC VALVE HEAVY-DUTY WHEEL MOTOR-BRAKES

MTK/B - DISC VALVE HEAVY-DUTY WHEEL MOTOR-BRAKES

MTK/B	Displacement in ³ /rev (cm ³ /rev)	Maximum Δ pressure psi (bar)	Maximum speed RPM	Oil flow USgpm (lpm)	Maximum torque lb·in (daNm)
MTK/B160	9,63 (157,9)	3626 (250)	505	21,1 (80)	5045 (57)
MTK/B200	12,28 (201,3)	3626 (250)	400	21,1 (80)	6373 (72)
MTK/B250	15,38 (252,2)	3626 (250)	320	21,1 (80)	8055 (91)
MTK/B315	19,2 (314,9)	3626 (250)	255	21,1 (80)	9293 (105)
MTK/B400	24,2 (396,8)	2900 (200)	200	21,1 (80)	9470 (107)
MTK/B470	28,7 (407,5)	2320 (160)	170	21,1 (80)	9028 (102)
MTK/B500	30,65 (502,4)	2320 (160)	159	21,1 (80)	9648 (109)

MTM/B - DISC VALVE HEAVY-DUTY WHEEL MOTOR-BRAKES

MTM/B	Displacement in ³ /rev (cm ³ /rev)	Maximum Δ pressure psi (bar)	Maximum speed RPM	Oil flow USgpm (lpm)	Maximum torque lb·in (daNm)
MTM/B200	12,29 (201,4)	3600 (250)	625	33 (125)	6375 (72)
MTM/B250	15,36 (251,8)	3600 (250)	500	33 (125)	7965 (90)
MTM/B315	19,9 (326,3)	3600 (250)	380	33 (125)	10265 (116)
MTM/B400	25,06 (410,9)	3600 (250)	305	33 (125)	13010 (147)
MTM/B470	28,97 (475)	3600 (250)	260	33 (125)	15135 (171)
MTM/B500	30,17 (494,9)	3340 (230)	250	33 (125)	15225 (172)
MTM/B630	38,5 (631,2)	2680 (185)	196	33 (125)	15490 (175)
MTM/B725	44,2 (724)	2320 (160)	170	33 (125)	14160 (160)

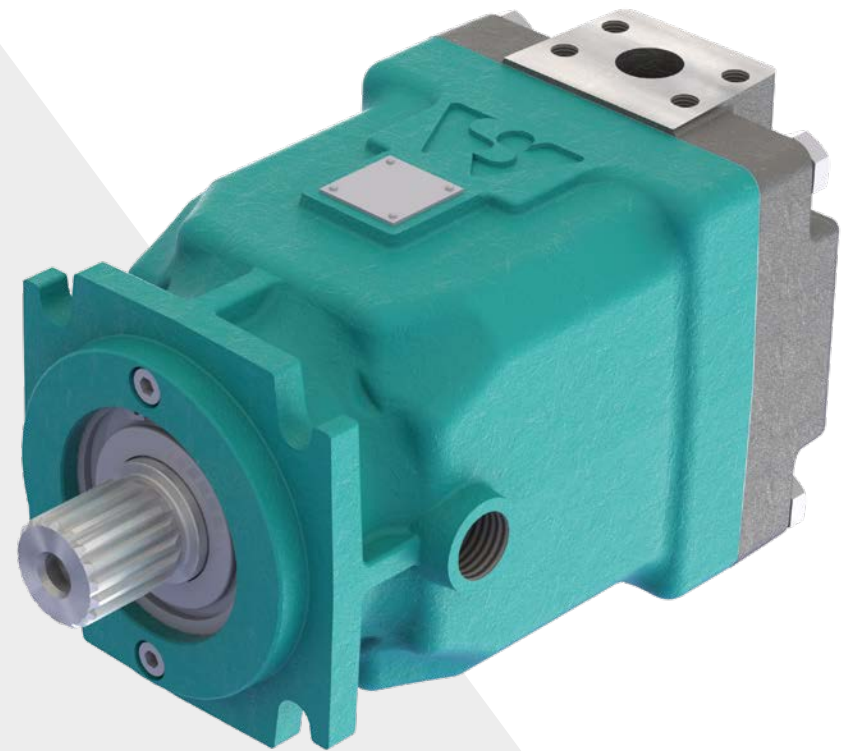


DISC VALVE HEAVY-DUTY WHEEL MOTOR-BRAKES

MLHSBD - DISC VALVE DRUM MOTOR-BRAKES

MLHSBD	Displacement in ³ /rev (cm ³ /rev)	Maximum Δ pressure psi (bar)	Maximum speed RPM	Oil flow USgpm (lpm)	Maximum torque lb·in (daNm)
MLHSBD80	4,91 (80,5)	3050 (210)	810	17 (65)	2120 (24)
MLHSBD100	6,1 (100)	3050 (210)	750	20 (75)	2700 (30,5)
MLHSBD125	7,67 (125,7)	3050 (210)	600	20 (75)	3320 (37,5)
MLHSBD160	9,74 (159,7)	3050 (210)	470	20 (75)	4340 (49)
MLHSBD200	12,2 (200)	3050 (210)	375	20 (75)	5400 (61)
MLHSBD250	15,3 (250)	2900 (200)	300	20 (75)	6370 (72)
MLHSBD315	19,2 (314,9)	2900 (200)	240	20 (75)	7300 (82,5)
MLHSBD400	24,2 (397)	2320 (160)	190	20 (75)	7660 (86,5)
MLHSBD475	28,96 (474,6)	1880 (130)	160	20 (75)	7520 (85)
MLHSBD525	31,88 (522,7)	1670 (115)	145	20 (75)	7520 (85)
MLHSBD565	34,47 (564,9)	1520 (105)	130	20 (75)	7520 (85)

AXIAL PISTON MOTORS



AXIAL PISTON MOTORS

MAP

MAP	Displacement in ³ /rev (cm ³ /rev)	Maximum Δ pressure psi (bar)	Maximum speed RPM	Oil flow USgpm (lpm)	Maximum torque lb·in (daNm)
MAP22	1,35 (22,15)	5080 (350)	4200	24,6 (93)	1088 (123)
MAP28	1,74 (28,47)	5080 (350)	4200	31,7 (120)	1407 (159)
MAP35	2,21 (36,16)	5080 (350)	4000	38,3 (145)	1789 (202)
MAP40	2,54 (41,59)	5080 (350)	4000	44,1 (167)	2053 (232)
MAP46	2,88 (47,13)	5080 (350)	4000	47,5 (180)	2328 (263)
MAP50	3,05 (49,94)	5080 (350)	3600	50 (189)	2460 (278)
MAP63	3,88 (63,58)	5080 (350)	3500	58,9 (223)	3133 (354)
MAP71	4,36 (71,5)	5080 (350)	3500	66 (250)	3523 (398)
MAP75	4,69 (76,84)	5080 (350)	3500	71,1 (269)	3788 (428)
MAP92	5,69 (93,18)	5080 (350)	3500	86,1 (326)	4549 (514)
MAP100	6,03 (98,75)	5080 (350)	3240	84,5 (320)	4870 (550)

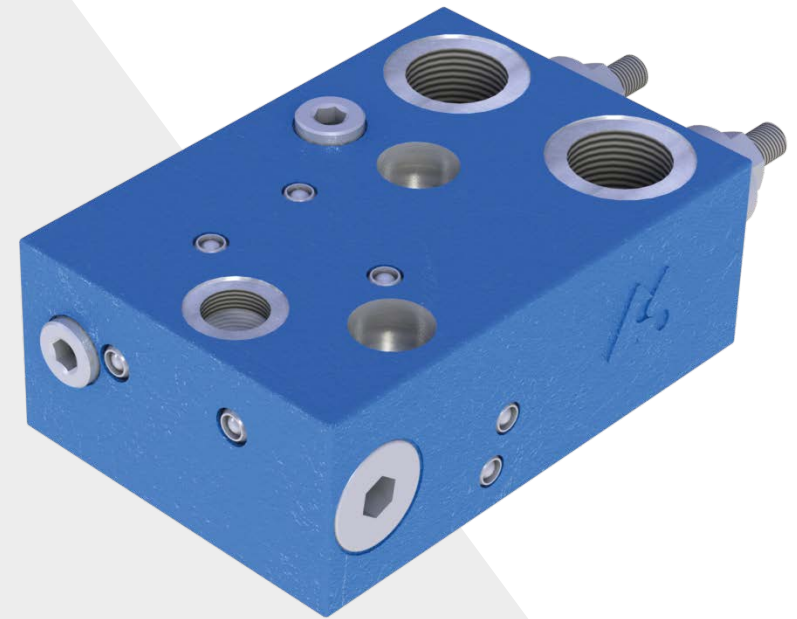


BECAUSE EVERY INDUSTRY AIMS FOR EXCELLENCE



MOTORS

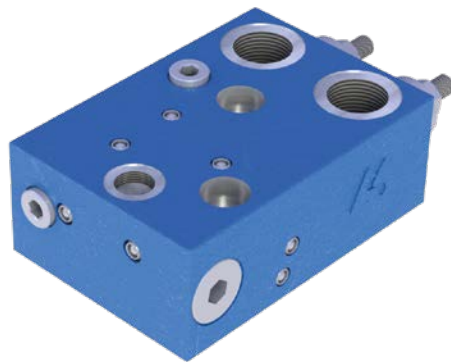
VALVES FOR MOTORS



VALVES FOR MOTORS

- Modular type
- Crossover relief
- Overcentre
- Shuttle valve

Description	Type	Rated flow USgpm (lpm)	Pressure range psi (bar)
KPBR, KPBS, KPBW	Overcentre	15,85 (60)	870-4060 (60-280)
KPBHR	Overcentre	15,85 (60)	1015-3625 (70-250)
KPBT	Overcentre	26,4 (100)	1015-3625 (70-250)
KPBV	Overcentre	52,8 (200)	1015-3625 (70-250)
KPWR, KPWS	Shuttle	15,85 (60)	3625 (250)
KPWT	Shuttle	26,4 (100)	3625 (250)
KPWV	Shuttle	52,8 (200)	3625 (250)
KPDR, KPDS, KPER, KPES	Crossover Relief	15,85 (60)	435-1450; 725-3050; 1160-4350 (30-100; 50-210; 80-300)
KPDT, KPET	Crossover Relief	32 (121,1)	1160-3050 (80-210)
KPDV, KPEV	Crossover Relief	53 (200)	145-1450; 290-3625 (10-100; 20-250)
KPDW, KPEW	Crossover Relief	15,85 (60)	75-580; 435-1450; 1160-3625 (5-40; 30-100; 80-250)



Motors
MLHP, MLHR, MLHH, MLHS, MLHRW, HW
HP, HR
MLHT
MLHV
MLHP, MLHR, MLHH, MLHS
MLHT
MLHV
MLHP, MLHR, MLHH, MLHS
MLHT
MLHV
MLHRW/HW