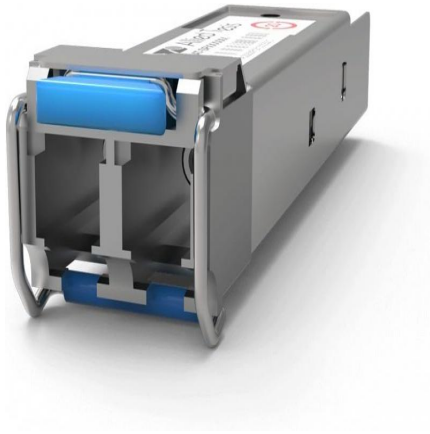


# Allied Telesis AT-SPLX10 Datasheet



Allied Telesis AT-SPLX10 1000LX SFP, LC, SMF, 1310 nm (10 km) SFP Transceiver Module

AT-SPLX10

Allied Telesis AT-SPLX10 1000LX SFP, LC, SMF, 1310 nm (10 km) SFP Transceiver Module

The Allied Telesis SP Series delivers flexible, full-duplex Ethernet connectivity. These hot-swappable fiber and copper interfaces simply plug into the SFP slot on all SFP-compatible devices. Configuration can be optimized to meet a wide variety of distance and service requirements. The SPLX10 offers a long-haul option to extend your network up to 10km.

## Specifications

- Part Number: AT-SPLX10
- Fiber Tyep: SMF
- Connector: LC
- Maximum Distance: 10km
- Wavelength: 1310nm
- DDM: No
- Transmit: -9 ~ -3 dBm
- Receive Sensitivity: -20dBm
- Power Budget: 11dBm
- Over-load: -3dBm
- Operating Temperature: 0°C to 70°C (32°F to 158°F)

Fore more information of this Allied Telesis AT-SPLX10, please visit Allied Telesis website:

<https://www.alliedtelesis.com/us/en/products/transceivers/1g/splx10>

[Buy Now](#)