

WRS400 & WRS600 Direct Plug Water-cooled Fixed Automation MIG Gun

This series of Automation MIG guns are offered without a cable assembly and are only offered for water-cooled welding applications. The water-cooled WRS MIG guns are rated at 100% duty cycle and can weld with wire diameters from .030” to 1/8”. The torch body uses a WRS64 and or WRS66 series conductor tube that are offered in various degrees of bend configurations. The WRS400 & WRS600 comes standard with a 180 degree conductor tubes. Other WRS Series conductor tubes are available and are sold separately. Refer to page 52.



Standard Features:

- WRS series offered in 400 and 600 amperes @ 100% duty cycle.
- MIG guns are furnished with the Tweco® rear connector plug, Part No. 176SH (Stock No. 2060-2177).
- Conductor tubes are keyed into the brass body of the assembly allowing a conductor tube to be replaced and the adjustments to be minimal when going from one tube configuration to another.
- Conductor tubes are locked in place by a threaded brass nut.

WRS400 Series Direct Plug Water-cooled

Part No.	Stock No.	Description
WRS400-3545	3044-1320	Direct Plug with R44-3545 Conduit

WRS600 Series Direct Plug Water-cooled

Part No.	Stock No.	Description
WRS600-116	3064-1725	Direct Plug with R45-116 Conduit

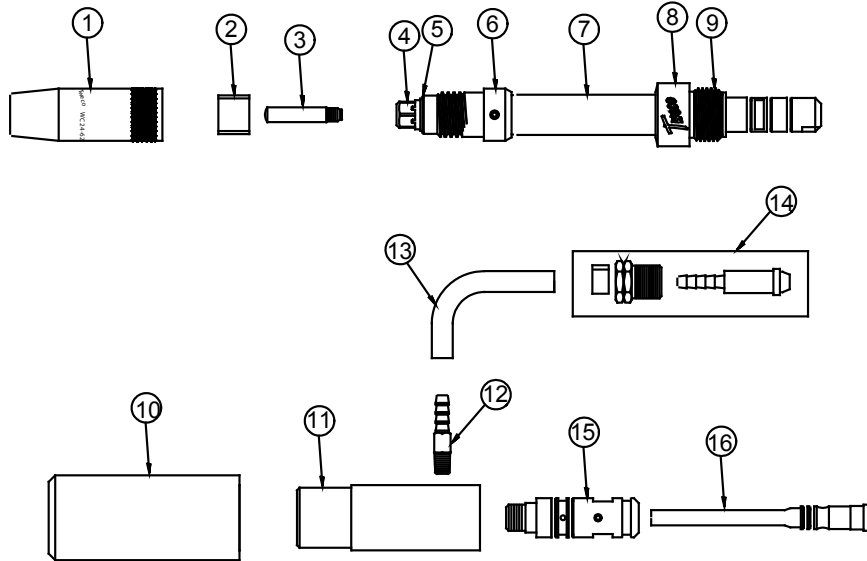


Optional rear connector plug (Must be ordered separately)

Part No.	Stock No.	Description
R174MH	2060-2184	Miller® Rear Connector Plug (Use with R44 Series Conduit)
R176MH	2035-2109	Miller Rear Connector Plug (Use with R45 Series Conduit)
350-174H	2035-2110	Tweco Rear Connector Plug (Use with R44 Series Conduit)
350-174PH	2035-2172	Panasonic® Rear Connector Plug (Use with R44 Series Conduit)
QTR174LH	2086-2623	Lincoln® Rear Connector Plug (Use with R44 Series Conduit)
QTR176LH	2086-2624	Lincoln Rear Connector Plug (Use with R45 Series Conduit)

Miller is a registered trademark of Illinois Tool Works, Inc. Lincoln is a registered trademark of Lincoln Electric Co. Panasonic is a registered trademark of Matsushita Electric Industrial Co., Ltd. The afore mentioned registered trademarks are in no way affiliated with Tweco Robotics or Thermadyne Industries, Inc. Tweco is a registered trademark of Thermadyne Industries, Inc.

WRS600 Replacement Parts



Item No.	Part No.	Stock No.	Description
1	—	—	Nozzle Assembly – Refer to Page 53 through 55
2	WC24-1	1244-1009	Spatter Shield – 400 Amp
	WC26-1	1264-1009	Spatter Shield – 600 Amp
3	—	—	Contact Tip – Refer to Page 56 through 61
4	—	—	Diffuser – Refer to Page 53
5	WC34-R	2044-1034	Pressure Ring – 400 Amp
	WC36-R	2064-1036	Pressure Ring – 600 Amp
NS	224S	2064-2059	O-Ring – 400 & 600 Amp
6	WCS34-H	1344-1844	Sealed Conductor Tube Housing – 400 Amp
	WCS36-H	1344-1145	Sealed Conductor Tube Housing – 600 Amp
7	—	—	Conductor Tube Assembly – Refer to Page 52
NS	224S	2064-2059	O-Ring – 400 & 600 Amp
8	WR6C	2066-2006	Conductor Tube Nut Cover
9	WR66-N	2066-2066	Conductor Tube Nut
10	WR600-H	2066-2601	Case – 400 & 600 Amp
11	WR600-106	2066-2107	Torch Block Assembly – 400 & 600 Amp
12	QTRW600-N	3044-1039	Water Hose Nipple
13	60957	N/A	Water Hose – Sold Per Ft.
14	WC35-5	1764-2140	Water Hose Fitting
	176S-H	2060-2177	Tweco® Connector Plug - ***
15	350-174H	2035-2110	Tweco Connector Plug (Uses R44 series Conduit)
	QTR176LH	2086-2624	Lincoln® Connector Plug (2.71" – 68,83mm OAL.)
16	EL176LH	2060-2680	Lincoln Connector Plug (3.84" – 97,54mm OAL)
	QTR174LH	2086-2623	Lincoln Connector Plug (Uses R44 series Conduit)
16	350-174PH	2035-2172	Panasonic® Connector Plug (Uses R44 series Conduit)
	R176MH	2060-2184	Miller® Connector Plug
16	R174MH	2035-2109	Miller Connector Plug
	R175M-N045	2050-2181	Miller Plug Nipple, .045" (1,0mm) Wire (Use w/R176MH)
16	R174M-N045	2040-2192	Miller Plug Nipple, .045" (1,0mm) Wire (Use w/R174MH)
	R175M-N116	2050-2182	Miller Plug Nipple, .062" (1,6mm) Wire (Use w/R176MH)
16	R174M-N116	2040-2191	Miller Plug Nipple, .062" (1,6mm) Wire (Use w/R174MH)
	—	—	Conduit (Refer to Page 62 - 63)

Miller is a registered trademark of Illinois Tool Works, Inc. Lincoln is a registered trademark of Lincoln Electric Co. Panasonic is a registered trademark of Matsushita Electric Industrial Co., Ltd. The afore mentioned registered trademarks are in no way affiliated with Tweco Robotics or Thermadyne Industries, Inc. Tweco is a registered trademark of Thermadyne Industries, Inc.