

Fujitsu recommends Windows 10 Pro for business.

Data Sheet

FUJITSU Notebook LIFEBOOK E5411

Your Powerful and Modern Business Device

The FUJITSU Notebook LIFEBOOK E5411 is exclusively designed for office workers needing a powerful, fully-equipped notebook. Thanks to the 11th generation Intel® Core™ processor you can work efficiently wherever you are. The advanced security features like PalmSecure™ are protecting your business data against unauthorized access. Modern Standby provides you an instantly ready and always connected notebook.

Modern and robust design

Reliable mobility, ease of use and modern good looks for everyday business demands

- Slim 23.9 mm entry notebook starting at 1.79 kg with a solid design
- Enjoy an ergonomic viewing experience with a 14.0-inch outdoor friendly anti-glare FHD display
- With optional touch or non-touch screen
- Long Lifecycle with 24 months

Reliable and secure performance

Protect your business data from unauthorized access at all times

- Integrated PalmSecure™ or finger print sensor
- Infrared Camera: Allows face recognition with Windows Hello
- Intel® Iris® Xe Graphics
- Built-in Privacy Camera Shutter: Protecting your privacy
- SmartCard reader and TPM 2.0

Best in class connectivity

Be flexible and stay productive anywhere, anytime

- Compact and versatile Intel® Thunderbolt™ 4 USB Type-C connector to charge your laptop, transfer files at fast speeds, connect external monitors and other peripherals
- Full set of ports with a full-sized HDMI, VGA and LAN connector and USB Type-C
- Based on the latest QuadCore Intel processor, enabling data to be processed faster

Convenient serviceability and upgradeability

Easy access to key components reduces upgrade time and costs

- Battery, memory, internal storage and connectivity components can be changed with ease

Long-term stable platform

Protect your investments and be ready for shared desk concepts

- This LIFEBOOK E5 Series provides an extraordinary guaranteed product lifecycle of 24 months.



Components

Base unit	LIFEBOOK E5411
Operating systems	
Operating system pre-installed	Windows 10 Pro. Fujitsu recommends Windows 10 Pro for business. Windows 10 Home
Operating system notes	Windows 10 Support: After the end of the product life FUJITSU will continue to test and support all upcoming Windows 10 releases for a period of maximum 5 years – depending on the available extension of hardware services through FUJITSU Warranty top ups. For details please see “FUJITSU Service Statement for Windows 10 Semi-Annual-Channel Support” at http://support.ts.fujitsu.com .
Processor	
	Intel® Core™ i7-1185G7 processor (4 Cores / 8 Threads, up to 4.8 GHz)
	Intel® Core™ i7-1165G7 processor (4 Cores / 8 Threads) *
	Intel® Core™ i5-1145G7 processor (4 Cores / 8 Threads)
	Intel® Core™ i5-1135G7 processor (4 Cores / 8 Threads) *
	Intel® Core™ i3-1115G4 processor (2 Cores / 4 Threads) *
	*Processor only for retail, SMB, education and government
Memory modules	
	4 GB (1 module(s) 4 GB) DDR4, 3,200 MT/s, SO DIMM
	8 GB (1 module(s) 8 GB) DDR4, 3,200 MT/s, SO DIMM
	16 GB (1 module(s) 16 GB) DDR4, 3,200 MT/s, SO DIMM
	32 GB (1 module(s) 32 GB) DDR4, 3,200 MT/s, SO DIMM
Hard disk drives (internal)	
	PCIe-SSD, 512 GB M.2 NVMe module, SED
	PCIe-SSD, 256 GB M.2 NVMe module, SED
	PCIe-SSD, 256 GB M.2 NVMe module
	PCIe-SSD, 1 TB M.2 NVMe module, SED
Hard disk notes	Accessible capacity may vary, also depending on used software.
Interface add on cards/components (optional)	
3G/4G (optional)	LTE Sierra Wireless EM7421 (Cat.7) (Downlink speed up to 300 Mbit/s, Uplink speed up to 150 Mbit/s)
Display	
	35.6 cm (14-inch), LED backlight, (Full HD), Anti-glare IPS touchscreen, compound, 1,920 x 1,080 pixel, 700:1, 250 cd/m ²
	35.6 cm (14-inch), LED backlight, (Full HD), Anti-glare IPS display, compound, 1,920 x 1,080 pixel, 700:1, 220 cd/m ²
Multimedia	
Camera	Built-in webcam (HD) with Status LED Built-in Infrared webcam (HD) with Status LED
Camera notes	720p, 1 megapixels, 1280 x 720, with Privacy Camera Shutter
Microphone	dual digital array microphone

Base unit

Base unit	LIFEBOOK E5411
General system information	
Chipset	Integrated
Supported capacity RAM (min.)	4 GB
Supported capacity RAM (max.)	64 GB
Memory slots	2 SO DIMM (DDR4, 3200 MHz)
Memory notes	Dual channel support

General system information

LAN	10/100/1,000 MBit/s Intel® I219LM
Integrated WLAN	Intel WiFi 6 AX201
BIOS version	UEFI Specification 2.7
BIOS features	InsydeH2O BIOS
Audio type	On board
Audio codec	Realtek ALC255
Audio features	2x built-in speakers (stereo)

Display

Display notes	FHD - Viewing angle: Left/Right 80°, Top 80°, Bottom 80°; Color Gamut: 45%, response time 25 ms
Brightness - typical	FHD - 220 cd/m ² ; FHD Touch - 250 cd/m ²
Contrast - typical	FHD 700:1

Graphics

Base unit	LIFEBOOK E5411
TFT resolution (HDMI)	Up to 4,096 x 2,160 pixel (30 Hz)
TFT resolution (VGA)	up to 1,920 x 1,200
Graphics brand name	Intel® UHD Graphics (with Single channel memory), Intel® Iris® Xe Graphics (with Dual channel memory)
Graphics features	3 Display Support DirectX® 12 OpenGL® 4.5
Graphics notes	Shared memory depending on main memory size and operating system

Interfaces (Base unit specific)

DC-in	1
Audio: line-out / headphone	1 (combo port with Audio line-in)
Audio: line-in / microphone	1 (combo port with Audio line-out)
Internal microphones	2x digital array microphones (optional)
USB 3.2 Gen 1 (5 Gbps) total	2x Type-A (1 with Anytime USB charge functionality)
USB 4.0 Gen 3 (20 Gbps) total	1x Type-C Intel® Thunderbolt™ 4 (with Power Delivery functionality)
USB Type-C	USB 4.0 Gen3 (20 Gbps), Intel® Thunderbolt™ 4 (40Gbps), Power Delivery (15W), DP out
VGA	1
DisplayPort	1 v1.2 (via USB Type-C adapter)
HDMI	1 v1.4b
Ethernet (RJ-45)	1
Memory card slots	1 SD 3.0 Standard SD/microSD card SDHC/microSDHC card SDXC/microSDXC card Speed Class: up to UHS-I
SmartCard slot	1 (optional)
SIM card slot	1 (Micro-SIM, only for models with integrated 4G/LTE module)
Docking connector for Port Replicator	1
Kensington Lock support	1

Port Replicator interfaces (optional)

	Thunderbolt™ 4 PR	Model: NPR46 (mech. PR)	USB Type-C PR	Thunderbolt™ 3 PR
DC-in	1 (20V/170W required)	1 (19V/90W required)	1 (19V/90W required)	1 (20V/170W required)
Power on switch	1	1	1	1
Audio: headphone	---	1	---	---
Audio: microphone	---	1	---	---
Audio: comments	1 Combo jack for headset usage	---	1 Combo jack for headset usage	1 Combo jack for headset usage
USB 3.2 Gen 1 (5 Gbps) total	---	4x Type-A 2x Type-C	---	---

Port Replicator interfaces (optional)

DisplayPort	2 (up to 2560 x 1600), DP 1.4	2 (up to 2x 3840x2160 60Hz)	1 (up to 2560 x 1600)	2 (up to 2560 x 1600)
VGA	---	1 (up to 1920x1200 6Hz)	1 up to 1920x1200 @ 60Hz depending on FJ mobile client	---
DVI	---	1 (up to 1920x1200 60Hz)	---	---
HDMI text	1	---	1	1
Interface Notes	2x Type-A - 5V/0.9A, 4.5W 1x Type-A - 5V/2.4A, 12W 2x Type-C - 5V, 1.5A, 4.5W charging port 1x Type-C - TBT4 up to 60 W (PD v2.0-1.1), 5-20V, 3.0A upstream (PC) 1x Type-C - TBT4 up to 15 W (PD v2.0-1.1), 5V, 3.0A downstream, power output to client	---	3x Type-A - 5V/0.9A, 4.5W 1x Type-C - 15W 1x Type-C - Up to 60 W (PD v2.0-1.1) power output to client or 4.5W input	2x Type-A - 5V/0.9A, 4.5W 1x Type-A - 5V/2.4A, 12W 2x Type-C - 5V, 1.5A, 4.5W charging port 1x Type-C - TBT3 up to 60 W (PD v2.0-1.1), 5-20V, 3.0A upstream (PC) 1x Type-C - TBT3 up to 15 W (PD v2.0-1.1), 5V, 3.0A downstream, power output to client
Kensington Lock support	1	1 (Portrep only, Portrep option with key lock to secure Portrep & System)	no	1
Notes	RJ-45:10/100/1000 MBits/s LAN WoL from S3 state WoL from S4 / S5 / G3 state depending on Fujitsu mobile client PXE launching for dedicated FJ mobile clients Set the MAC address by the user MAPT from 10th gen	1 RJ45 (10/100/1000)	1 RJ45 (10/100/1000) WoL from S3 state WOL from S4 / S5 / G3 depending on Fujitsu mobile client Launch of PXE for dedicated FJ mobile clients Set the MAC address by the user MAPT from 9th gen	RJ-45:10/100/1000 MBits/s LAN WoL from S3 state WoL from S4 / S5 / G3 state depending on Fujitsu mobile client PXE launching for dedicated FJ mobile clients Set the MAC address by the user MAPT from 9th gen

Keyboard and pointing devices

Keyboard w/o touchstick (spill-resistant), Keyboard w/ touchstick, Backlight keyboard w/o touchstick
Number of keyboard keys: 85, Keyboard pitch: 18.4 mm, Keyboard stroke: 1.7 mm
Multi gesture touchpad with two mouse buttons
Status LED
Power Button

Wireless technologies

Antennas	2 Dual band WLAN antennas, 2 LTE antennas optional
Bluetooth	v5.1
Integrated WLAN	Intel WiFi 6 AX201
WLAN encryption	WPA/WPA2/WPA3 (Wi-Fi Protected Access)
WLAN notes	Import and usage according to country-specific regulations.
Integrated LTE or UMTS	LTE Sierra Wireless EM7421 (cat.7)
LTE/UMTS/GPS notes	Optional
GPS	Embedded in 4G module if configured with WWAN

Power supply

AC Adapter	19 V / 90 W (4.74 A), 100 V - 240 V, 50 Hz - 60 Hz, 3-pin (grounded) AC-Adapter 19 V / 65 W (3.42 A), 100 V - 240 V, 50 Hz - 60 Hz, 3-pin (grounded) standard AC-Adapter 19 V / 90 W (4.74 A), 100 V - 240 V, 50 Hz - 60 Hz, 3-pin (grounded) AC-Adapter
Notes	65W AC Adapter for usage with system/ 90W AC Adapter for usage with Port Replicator
1st battery options	3,490 mAh, 50 Wh
1st battery	Lithium polymer battery 4-cell, 50 Wh
Battery features	Quick Charge: 80% in 1h

Power supply

Runtime 1st battery	tbc
Battery notes	Battery runtime information is based on worldwide acknowledged BAPCo® MobileMark® 2018. Refer to www.bapco.com for additional details. The BAPCo® MobileMark® Benchmark provides results that enable direct product comparisons between manufacturers. It does not guarantee any specific battery runtime which actually can be lower and may vary depending on product model, configuration, application and power management settings. The battery capacity decreases slightly with every re-charge and over its lifetime.

Noise emission

Noise emission	Please refer to the Eco Declaration
----------------	-------------------------------------

Dimensions / Weight / Environmental

Dimensions (W x D x H)	333.6 x 234 x 23.9 mm 13.13 x 9.21 x 0.94 inch
Weight	from 1.79 kg
Weight (lbs)	from 3.94 lbs
Weight notes	Weight may vary depending on actual configuration
Operating ambient temperature	5 - 35 °C (41 - 95 °F)
Operating relative humidity	20 - 80 %

Compliance

Product	LIFEBOOK E5411
Model	5E14A2
Germany	GS planned (Full HD Display only)
Europe	CE CB
USA/Canada	FCC (depending on configuration) (planned)
Global	RoHS (Restriction of hazardous substances) WEEE (Waste electrical and electronic equipment) Microsoft Operating Systems (HCT / HCL entry / WHQL) TCO Certification in progress EPEAT® in progress (dedicated regions) ENERGY STAR® in progress MIL-STD testing in progress
China	CCC (planned)
Compliance link	https://sp.ts.fujitsu.com/sites/certificates

Additional Software

Additional software (preinstalled)	Fujitsu Plugfree Network (network management utility) Fujitsu Anytime USB Charge Utility Fujitsu Battery Utility Fujitsu Function Manager Fujitsu DeskUpdate (driver and utility tool)
Additional software (optional)	Recovery DVD for Windows® Drivers & Utilities DVD (DUDVD) CyberLink YouCam (webcam software) Microsoft® Office Professional 2019 Microsoft® Office Home and Business 2019 (A Microsoft Account is required to activate each copy of these products. For purchase and activation only in the region in which it was acquired.)

Manageability

Manageability technology	DeskUpdate Driver management PXE 2.1 Boot code Wake up from S5 (off mode) WoL (Wake on LAN) Intel® vPro™ technology
Manageability software	DeskView Client DeskView Instant BIOS Management

Manageability

DeskView components	Inventory Management BIOS Management Driver Management Security Management Alarm Management
Supported standards	WMI (Windows Management Instrumentation) PXE (Preboot Execution Environment) DMI (Desktop Management Interface) SMBIOS (System Management BIOS) CIM (Common Information Model) BootP (made4you)
Manageability link	http://www.fujitsu.com/fts/manageability

Security

System and BIOS Security	EraseDisk Trusted Platform Module (TPM 2.0)
User Security	Embedded PalmSecure™ sensor (optional) Embedded fingerprint sensor (optional) Access protection via internal SmartCard reader (optional) Hard disk password User and supervisor BIOS password

Warranty

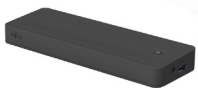
Warranty period	1 year (for countries in EMEA)
Warranty type	Bring-in Service / Collect & Return Service (depending on country)
Warranty Terms & Conditions	http://www.fujitsu.com/warranty
Product Support Services - the perfect extension	
Recommended Service	9x5, Onsite Response Time: Next Business Day
Spare Parts availability	5 years after end of product life
Service Weblink	http://www.fujitsu.com/emeia/products/product-support-services/

Recommended Accessories

Port Replicator for LIFEBOOK U7 and E5 family with key lock

Flexibility, expandability, desktop replacement, investment protection – to name just a few benefits of Fujitsu's docking options.

Order Code:
S26391-F1607-L219

USB Type-C Port Replicator 2

Connect to your peripherals. Adapt to the task on demand. The universal USB Type-C connection helps you to get your peripheral devices connected easily. Enhance your USB connection options, connect your displays via HDMI, DisplayPort or VGA and charge your device without an additional charger.

Weight: 334 g, Dimensions: 219 x 75 x 22.9 (front) – 26.0 (back) mm, including 90W AC adapter and Type C cable

Order Code:
S26391-F3327-L100

Thunderbolt™ 3 Port Replicator

One cable, many capabilities - Connect, save space, and keep your desk tidy. With Thunderbolt™ 3 you can connect almost everything with only one cable and in highspeed. Enhance your USB connection options, connect your displays via Thunderbolt™ 3, HDMI, DisplayPort and charge your device without an additional charger. Thunderbolt™ 3 allows you to connect even highspeed devices in a most convenient way.
Weight: 440 g, Dimensions: 239 x 80 x 26 mm, including 170W AC adapter and TBT cable

Order Code:
S26391-F3357-L100

Battery 4 cell 50 Wh

The 4 cell 50 Wh battery requires a voltage of 14.4 V and has a capacity of 3490 mAh. The weight of the battery is 300 gms and the recharge time of the cell is 60 minutes for a 80% charge and 150 minutes for a complete 100% charge.

Order Code:
S26391-F1616-L100

Pro Green Backpack 14

The FUJITSU Pro Green Backpack 14 protects notebooks and tablets with displays measuring up to 14 inches. It features a roomy main compartment with a padded notebook slot and pockets with separate areas for smaller items like power adapters and office supplies to keep you organized. One small front pocket and two zipped side pockets complete the backpack. Padded shoulder straps, a padded top handle and back cushioning provide pleasant carrying comfort when you're on the move. The backpack's elegant design and recyclable material will impress everyone who sees it.

Order Code:
S26391-F1194-L82

**Wireless Notebook Mouse
WI660**

The Wireless Notebook Mouse WI660 uses wireless 2.4 GHz technology, and an ultra-high resolution switchable sensor to give you the precision and reliability you need (1000/1600/2000 dpi). Sporting a stylish silver-black finish, the WI660 wireless mouse is well suited to all environments.

Order Code:
S26381-K471-L100

More information

Fujitsu products, solutions & services

In addition to FUJITSU Notebook LIFEBOOK E5411, Fujitsu provides a range of platform solutions. They combine reliable Fujitsu products with the best in services, know-how and worldwide partnerships.

Fujitsu Portfolio

Build on industry standards, Fujitsu offers a full portfolio of IT hardware and software products, services, solutions and cloud offering, ranging from clients to datacenter solutions and includes the broad stack of Business Solutions, as well as the full stack of Cloud offering. This allows customers to leverage from alternative sourcing and delivery models to increase their business agility and to improve their IT operation's reliability.

Computing Products

www.fujitsu.com/global/products/computing/

Software

www.fujitsu.com/software/

More information

Learn more about FUJITSU Notebook LIFEBOOK E5411, please contact your Fujitsu sales representative or Fujitsu Business partner, or visit our website.
www.fujitsu.com/emeia/products/computing/pc/notebooks/index.html

Fujitsu green policy innovation

Fujitsu Green Policy Innovation is our worldwide project for reducing burdens on the environment. Using our global know-how, we aim to contribute to the creation of a sustainable environment for future generations through IT. Please find further information at <http://www.fujitsu.com/global/about/environment/>



Copyrights

All rights reserved, including intellectual property rights. Changes to technical data reserved. Delivery subject to availability. Designations may be trademarks and/or copyrights of the respective manufacturer, the use of which by third parties for their own purposes may infringe the rights of such owner. For further information see <http://www.fujitsu.com/emeia/resources/navigation/terms-of-use.html>
Copyright 2021 Fujitsu Technology Solutions GmbH

Disclaimer

Technical data are subject to modification and delivery subject to availability. Any liability that the data and illustrations are complete, actual or correct is excluded. Designations may be trademarks and/or copyrights of the respective manufacturer, the use of which by third parties for their own purposes may infringe the rights of such owner.

CONTACT

Fujitsu Technology Solutions GmbH
Website: www.fujitsu.com
2021-02-09 EM-EN

All rights reserved, including intellectual property rights. Changes to technical data reserved. Delivery subject to availability. Designations may be trademarks and/or copyrights of the respective manufacturer, the use of which by third parties for their own purposes may infringe the rights of such owner. For further information see <http://www.fujitsu.com/emeia/resources/navigation/terms-of-use.html>
Copyright 2021 Fujitsu Technology Solutions GmbH