

PRIMERGY TX1330 M1

System configurator and order-information guide

September 2015

Contents

Instructions

Configuration diagram

Configurator

Software Configurator 32-bit and 64-bit

I Basic unit

II Processor

III Memory

IV Graphics

V Energy Star restrictions

VI Accessible drives

VII Hard disk drives

VIII SAS / SCSI Controller

IX Disk array

X Communication/Network

XI System management options

XII Miscellaneous

XIII Country specific power cords

Change report



PRIMERGY Server

Instructions

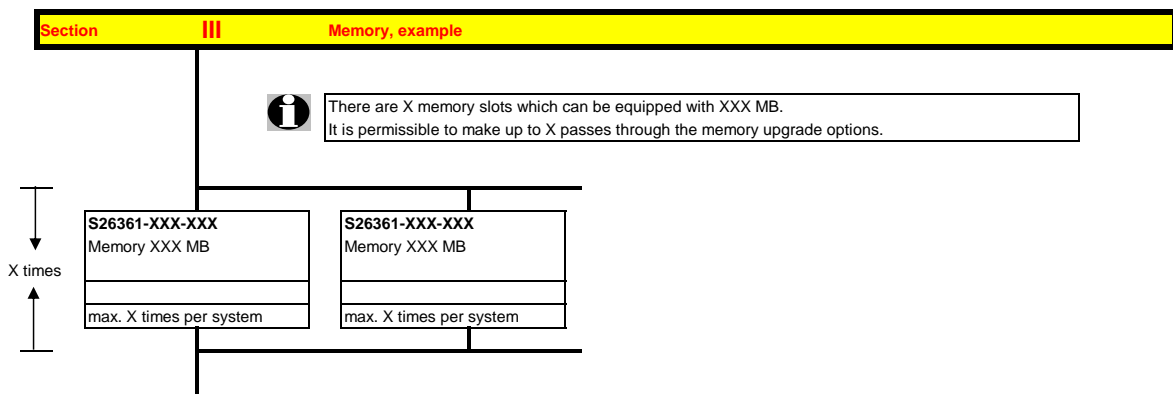
This document contains basic product and configuration information that will enable you to configure your system via PC-/ System-Architect.

Only these tools will ensure a fast and proper configuration of your PRIMERGY server or your complete PRIMERGY Rack system.

You can configure your individual PRIMERGY server in order to adjust your specific requirements.

The System configurator is divided into several chapters that are identical to the current price list and PC-/ System-Architect

Please follow the lines. If there is a junction, you can choose which way or component you would like to take. Go through the configurator by following the lines from the top to the bottom.



In one chapter you can only select as many components (here 4x) as the arrow indicates.



Please note that there are information symbols which indicate necessary information.



Further information in the internet see:

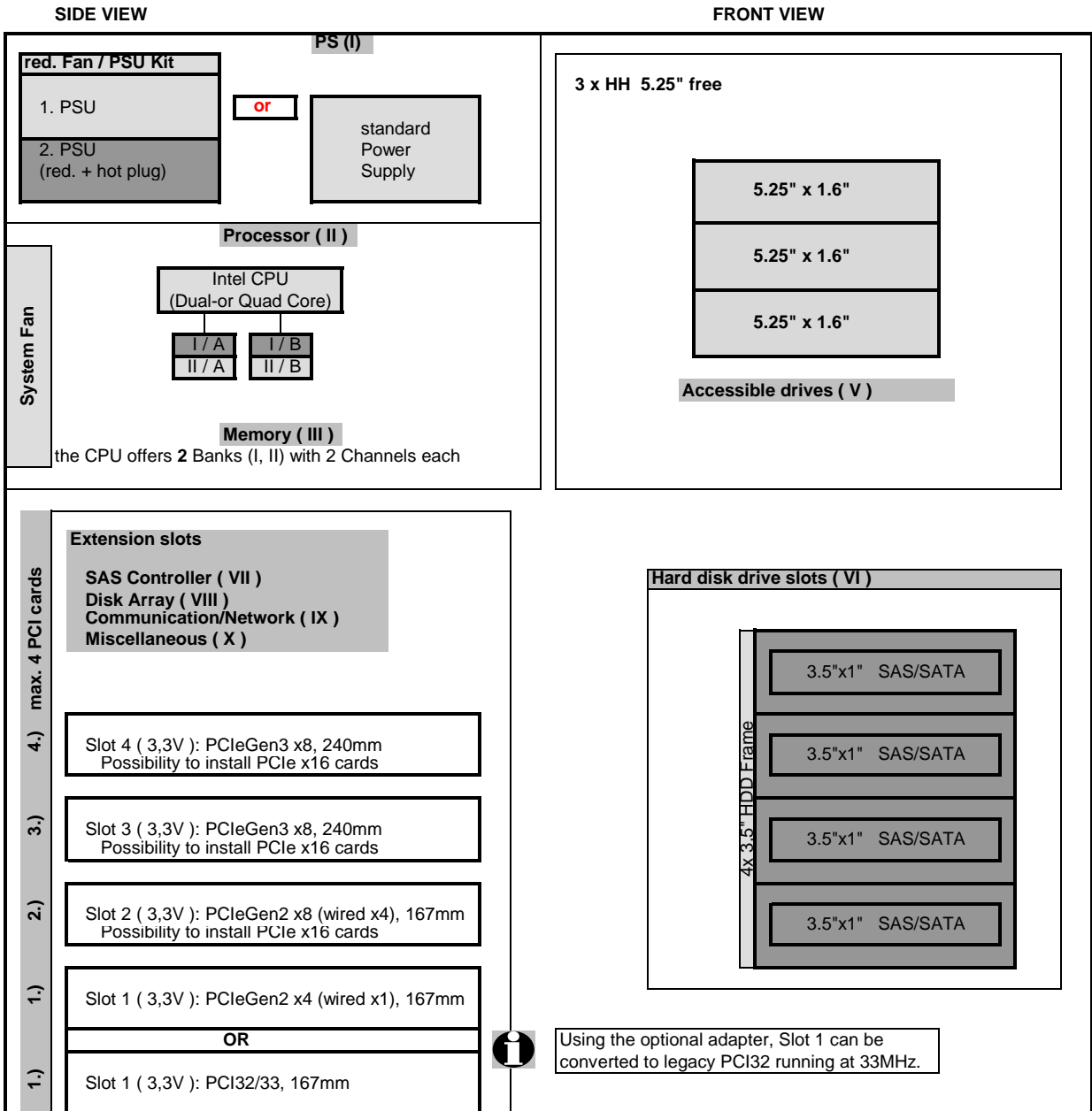
http://ts.fujitsu.com/products/standard_servers/index.html (internet)

https://partners.ts.fujitsu.com/com/order-supply/configurators/primergy_config/Pages/default.aspx (extranet)

Prices and availability see price list and PC-/ System-Architect
Subject to change and errors excepted

Configuration diagram PRIMERGY TX1330 M1 LFF (3.5") System Unit

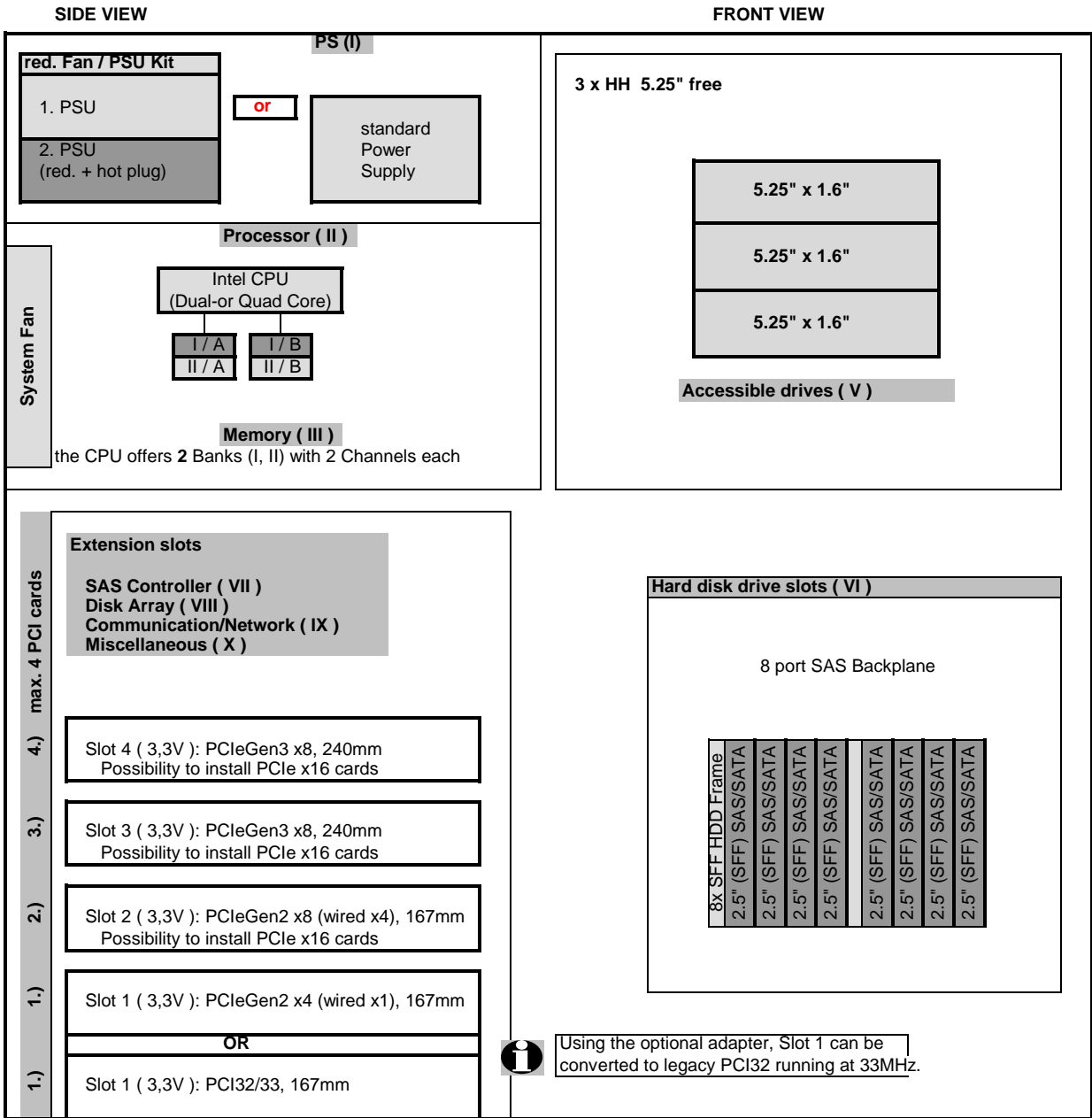
System unit (I)



- Included in basic unit
- Option

Configuration diagram PRIMERGY TX1330 M1 SFF (2.5") System Unit

System unit (I)



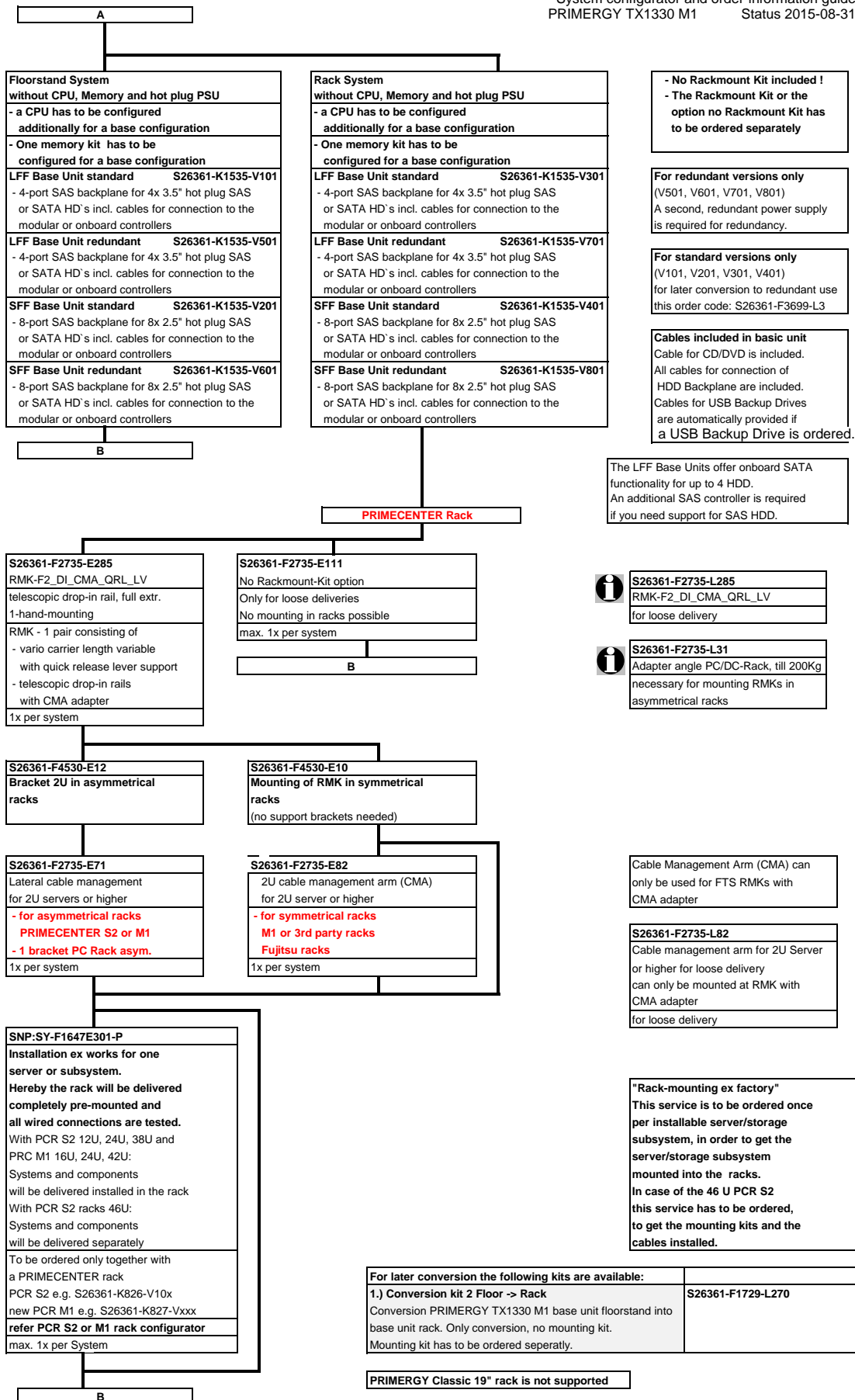
- Included in basic unit
- Option

Section | Basic unit

System unit, Rack and Floorstand, including:

- * **Two lockable front covers in floorstand version**
 - Door #1 for accessible drive bays
 - Door #2 for hot plug HDD bays
 - Both doors may be locked or door #1 may be left open while door #2 is still locked
 - * **backplane with 4 (LFF) or 8 (SFF) bays for hot-plug HD's. Type depending on base unit:**
 - Type 1: 4x hot plug LFF (3.5") SAS/SATA HDD (SAS/SATA LFF base units only)
 - Type 2: 8x (2x4) hot plug SFF (2.5") SAS HDD (SAS SFF base units only)
 - * **standard PSU (hot plug redundant PSU option available)**
 - * **System fan (No hot-plug, no redundancy)**
 - * **3 bays 5.25" for accessible drives (half Hight)**
 - Systemboard D3239 with:
 - heat pipe for the CPU
 - * **Chipset Intel® C224 (codenamed Denlow Lynx Point Standard)**
 - * **4 PCI slots:**
 - 2 x PCIe x8 Gen3
 - 1 x PCIe x4 (x8 connected) Gen2
 - 1 x PCIe x1 (x4 connected) Gen2 or optional 1 x 32Bit / PCI 33MHz, (5V)
 - * **4 memory slots for max. 32GB with 4x 8GB unbuffered DDR3 RAM**
 - Memory is divided into 4 DIMMs (2 channels with 2 slots per channel)
 - First Memory (one module) has to be selected for an orderable basic unit
 - Memory upgrade is possible module wise
 - SDDC (Chipkill) is not supported
 - * **SATA-Controller on board (supporting RAID 0/1/10)**
 - * **2x1 Gbit Ethernet LAN on board (Intel Springville and Intel Clarkville) with ToE;**
and iSCSI boot integrated in System BIOS as selectable option
 - * **iRMC S4 (integrated Remote Management Controller) on-board server management controller**
with dedicated 10/100/1000 Management LAN-port and
integrated graphics controller (max. Resolution: 1600 x 1200 at 16 bpp)
- Interfaces:**
- * 1x RS-232-C (9-pin) (usable for BMC or OS or shared)
 - * 1x VGA (15 pin)
 - * 6x USB 2.0 (UHCI) with 480MBit/s (4x external at the rear, 1x external at the front, 1x internal for UFM, no USB wakeup)
 - * 4x USB 3.0 (UHCI) with 5 GBit/s (2x external at the rear, 1x external at the frontside, 1x internal for backup device)
 - * 2x LAN RJ45, 1x Service-LAN RJ45 switchable
- *Internal Cables:**
1. SATA cable for BD/DVD.
 2. Cable for HDD Backplane
- * **ServerView Suite Software Paket inkl. ServerView Installation Manager and Server Management Software**
- * **Documentation engl. (multilingual on CD)**

A



- No Rackmount Kit included !
 - The Rackmount Kit or the option no Rackmount Kit has to be ordered separately

For redundant versions only (V501, V601, V701, V801)
 A second, redundant power supply is required for redundancy.

For standard versions only (V101, V201, V301, V401)
 for later conversion to redundant use this order code: S26361-F3699-L3

Cables included in basic unit
 Cable for CD/DVD is included. All cables for connection of HDD Backplane are included. Cables for USB Backup Drives are automatically provided if a USB Backup Drive is ordered.

The LFF Base Units offer onboard SATA functionality for up to 4 HDD. An additional SAS controller is required if you need support for SAS HDD.

S26361-F2735-L285
 RMK-F2_DL_CMA_QRL_LV
 for loose delivery

S26361-F2735-L31
 Adapter angle PC/DC-Rack, till 200Kg
 necessary for mounting RMKs in asymmetrical racks

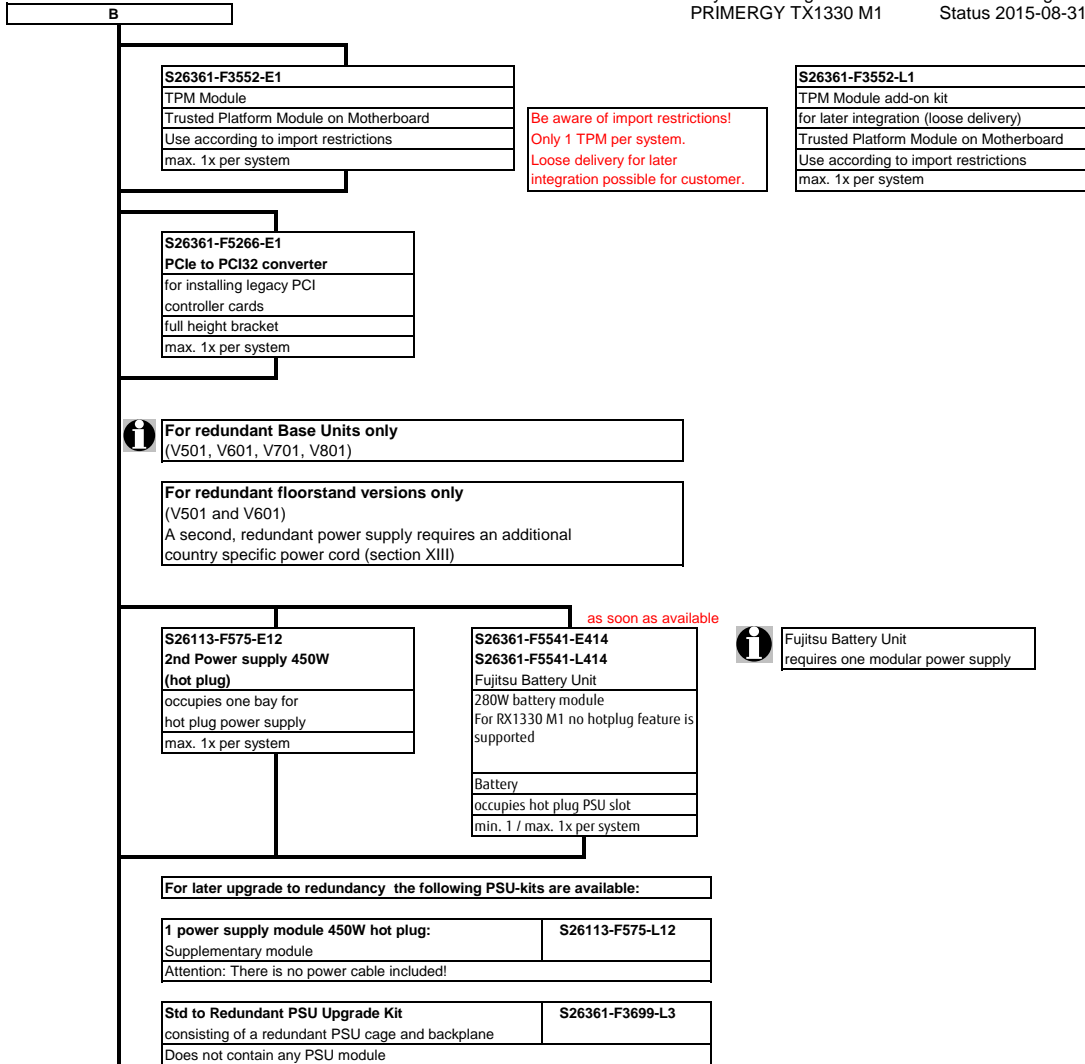
Cable Management Arm (CMA) can only be used for FTS RMKs with CMA adapter

S26361-F2735-L82
 Cable management arm for 2U Server or higher for loose delivery can only be mounted at RMK with CMA adapter for loose delivery

"Rack-mounting ex factory"
 This service is to be ordered once per installable server/storage subsystem, in order to get the server/storage subsystem mounted into the racks. In case of the 46 U PCR S2 this service has to be ordered, to get the mounting kits and the cables installed.

For later conversion the following kits are available:	
1.) Conversion kit 2 Floor -> Rack Conversion PRIMERGY TX1330 M1 base unit floorstand into base unit rack. Only conversion, no mounting kit. Mounting kit has to be ordered separately.	S26361-F1729-L270

PRIMECENTER Classic 19" rack is not supported



i Fujitsu Battery Unit requires one modular power supply

Section II Processor

One of following CPU's has to be selected for an orderable basic unit

Dual-Core CPU's	
- 1x 64-bit Intel Pentium (3MB SLC) or Core-i3 (3MB TLC) occupies socket for one CPU	
Pentium	
Pentium G3420 3.2GHz 2C/2T 3MB 1600MHz (54W)	S26361-F3581-E232
Core i3	
Core i3-4330 3.5GHz 2C/4T 4MB 1600MHz (54W)	S26361-F3581-E243
Quad-Core XEON CPU's	
- 1x 64-bit Intel Xeon UP (8MB shared TLC = Third Level Cache) Hyper-Threading; 1600 MHz DDR3 Bus and heat pipe occupies socket for one CPU	
Xeon E3-1220v3 3.1GHz 4C/4T 8MB 1600MHz Turbo (80W)	S26361-F3581-E322
Xeon E3-1231v3 3.3GHz 4C/8T 8MB 1600MHz Turbo (80W)	S26361-F3581-E423
Xeon E3-1241v3 3.4GHz 4C/8T 8MB 1600MHz Turbo (80W)	S26361-F3581-E424 on special release
Xeon E3-1271v3 3.5GHz 4C/8T 8MB 1600MHz Turbo (80W)	S26361-F3581-E427
Xeon E3-1281v3 3.6GHz 4C/8T 8MB 1600MHz Turbo (82W)	S26361-F3581-E428 on special release
Xeon E3-12xxL Power Optimized	
- 1x 64-bit Intel Xeon LV UP (8MB shared TLC = Third Level Cache) Hyper-Threading (HT); 1600 MHz DDR3 Bus and heat pipe occupies socket for one CPU	
Xeon E3-1275Lv3 2.7GHz 4C/8T 8MB 1600MHz Turbo (45W)	S26361-F3581-E417

Section III Memory

i There are 4 memory slots to be used for max. 4 unbuffered DIMMS.
 => max. 32GB unbuffered DDR3 RAM for UDIMMs with 8GB modules

Minimum one memory module or order code = first memory
 Unbuffered (ub) UDIMMs

4x	- One DDR3- ub ECC memory module, 1.35V
	4GB (1x4GB) 2Rx8 L DDR3-1600 U ECC S26361-F5312-E514
	8GB (1x8GB) 2Rx8 L DDR3-1600 U ECC S26361-F5312-E518
	Choose up to 4 order codes above.

C

C

Section IV Graphics

Graphics controller integrated in iRMCS3 (Integrated Remote Management Controller)
 (max. Resolution: 1600 x 1200 at 16bpp)



For deliveries to China with CCC label no graphic card is allowed within the configuration.
 It can be ordered as loose delivery only!

S26361-F2748-E538
PGRA CP NVS 1GB VGA PCIe x16
NVIDIA NVS315
1024 MB PCIe-x16
Connectors: 1x LFH 59
cable kit for 2x DVI or 2x VGA
cable kits included
Dual head + professional 2-D + 3-D supported for Windows OS
native driver support for Linux OS
full height bracket
max. 1x per system

The high end optional NVIDIA NVS315 graphic card offers dual head operation and fully 3D video support.
 The cables for either two times DVI-I or VGA connections are part of the delievery.
Remote Video direction via iRMC must be disabled.
 This PCIe-x16 card can also be installed in slit PCIe-x4, x8 or standard x16 slot.
 Only one card per server is allowed.

PY VGA card must be installed in slot 3



S26361-F2748-L538
PGRA CP NVS 1GB VGA PCIe x16
for loose delivery

D

D

Section VI Accessible drives

There are 3 bays (1.6" x 5.25") for accessible drives.

S26361-F3266-E2 DVD-ROM HH SATA 16x DVD 48x CD 1.6 x 5.25", black bezel max. 1x per system

S26361-F3267-E2 DVD-RW supermulti HH SATA all formats, DUAL/DL, DVD-RAM only W2K, W3K and Linux 1.6 x 5.25", black bezel max. 1x per system

S26361-F3641-E4 Blu-ray Triple Writer slim SATA 4x BD-RW, 8x DVD, 24x CD BD DL and all CD/DVD formats 0.5" drive with mounting frame 1.6 x 5.25", black bezel max. 1x per system

SSD SATADOM SATA 6Gb/s as boot device, non hot-plug	
32GB, Endurance=86 TBW (Seq. write)	S26361-F5533-E32
64GB, Endurance=172 TBW (Seq. write)	S26361-F5533-E64
128GB, Endurance=345 TBW (Seq. write)	S26361-F5533-E128
SATADOM is designed for use as a boot drive with the Endurance Spec. above.	
Vmware is not supported.	
max. 1x per system, System On-board SATA Interface=3Gb/s	

i SATADOM connection
 If SATADOM is configured
 than ODD & UFM is not supported

Special release
 Special release
 Special release

internal backup devices

S26361-F3554-E118 PSAS CP200i Based on chip LSISAS2008 SAS 6Gb/sec int: 8 port PCIe 2.0 x8, max. 1 per system

For an internal SAS Backup drive
 an additional SAS controller has to be configured
 Data cartridges must be ordered separately

S26361-F3561-E4 Tape drive LTO3 HH Ultrium SAS 400GB, 60MB/s, SAS 3Gb Connector: mini-SAS incl. SAS cable incl. cleaning cartridge without data cartridge 1.6 * 5.25", black bezel max. 1x per system

S26361-F3626-E2 Tape drive LTO4 HH SAS IBM V2 800GB, 120MB/s, SAS 6Gb Connector: mini-SAS incl. SAS cable incl. cleaning cartridge without data cartridge 1.6 * 5.25" max. 1x per system

RDX

S26361-F3750-E4 RDX Drive USB3.0 5.25" internal 100MB/s, USB 3.0 Connector: USB 3.0 "B" with USB cable without RDX cartridges 1.6 * 5.25", black bezel max. 1x per system

RDX cartridges must be ordered separately
 RDX 320GB = S26361-F3857-L320
 RDX 500GB = S26361-F3857-L500
 RDX 1TB = S26361-F3857-L600
 10x RDX320 = S26361-F3857-L329

F

F

Section VII Hard disks drives

SAS HDD requires SAS Controller
Configurations with Eco SATA can only be mixed with BC SATA HDD type
SAS and BC SATA drives with the same size can be mixed, but not used in one logical RAID volume
***) SSD Read-Intensive Endurance=0.3DWPD over 5y**
*****) SSD Mainstream Endurance=10DWPD over 5y**

SAS/SATA LFF (3.5") Base Units: SAS HDDs Require SAS Controller! see section VIII Internal Disk Array

There is a 6 port SATA controller in the Base Unit for connection of up to 4 SATA LFF hard disks
 For up to 4 3.5" SAS hard Drives, you must configure 1 of 3 different 8port SAS controller

4x

HDD Business Critical (BC) SATA 6Gb/s HD 3.5" with hot plug/hot replace tray	
500GB 7.200rpm,<9,0ms, 64MB Cache	S26361-F3670-E500
1000GB 7.200rpm,<9,0ms, 64MB Cache	S26361-F3670-E100
2000GB 7.200rpm,<9,0ms, 64MB Cache	S26361-F3670-E200
3000GB 7.200rpm,<9,0ms, 64MB Cache	S26361-F3670-E300
4000GB 7.200rpm,<9,0ms, 64MB Cache	S26361-F3670-E400
6000GB 7.200rpm,<9,0ms, 128MB Cache, 512e	S26361-F3903-E600
max. 4x per system	

as soon as available

HDD ECO SATA 6Gb/s 3.5" with hot plug/hot replace	
250GB 7200rpm, AF,<9,0ms, 16MB Cache	S26361-F3700-E250
500GB 7200rpm, AF,<9,0ms, 16MB Cache	S26361-F3700-E500
max. 4x per system	

G

HDD SAS 6Gb/s 3.5" with hot plug/hot replace tray	
300GB 15000rpm,<4,5ms, 16MB Cache	S26361-F4005-E530
450GB 15000rpm,<4,5ms, 16MB Cache	S26361-F4005-E545
600GB 15000rpm,<4,5ms, 16MB Cache	S26361-F4005-E560

HDD SAS 6Gb/s 2.5" within 3.5" hot plug/hot replace tray	
300GB 15000rpm,<3,0ms, 64MB Cache	S26361-F5520-E530
450GB 15000rpm,<3,0ms, 64MB Cache	S26361-F5520-E545
600GB 15000rpm,<3,0ms, 64MB Cache	S26361-F5520-E560
max. 4x per system	

SSD SATA 6Gb/s 2.5" within 3.5" hot plug/hot replace tray (H-P)	
120GB, Enterprise, Read-Intensive*	S26361-F5528-E120
240GB, Enterprise, Read-Intensive*	S26361-F5528-E240
480GB, Enterprise, Read-Intensive*	S26361-F5528-E400
800GB, Enterprise, Read-Intensive*	S26361-F5528-E800
100GB, Enterprise, Mainstream Endurance**	S26361-F5319-E100
200GB, Enterprise, Mainstream Endurance**	S26361-F5319-E200
max. 4x per system	

G

G

SAS / SATA SFF (2.5") Base Units: SAS or more than 4 SATA HDDs require a SAS Controller! see section VIII

Up to 4 SATA SFF (2.5") hard disks can be configured without a PCI SAS controller.
 Up to 8 SAS or SATA SFF (2.5") hard disks can be configured as standard together with a SAS controller.

S26361-F2826-E140
 Trigger to request a PCI SAS Controller for configuring more than 4 SATA HDDs
 max. 1x per system

For a later configuration of more than 4 SATA HDDs, the trigger is not necessary
 In this case it is sufficient to implement a SAS controller!
 It is not allowed to connect the SATA HDDs to different controllers
 In case of running more than 4 HDDs, all of them have to be connected to the PCI based Controller

SSD SATA 6Gb/s 2.5" with hot plug/hot replace tray	
120GB, Enterprise, Read-Intensive*	S26361-F5524-E120
240GB, Enterprise, Read-Intensive*	S26361-F5524-E240
480GB, Enterprise, Read-Intensive*	S26361-F5524-E480
800GB, Enterprise, Read-Intensive*	S26361-F5524-E800
100GB, Enterprise, Mainstream Endurance**	S26361-F5303-E100
200GB, Enterprise, Mainstream Endurance**	S26361-F5303-E200
max. 8x per system	

Business Critical (BC) SATA 6Gb/s HD 2.5" with hot plug/hot replace tray	
250GB 7.200rpm, <9,5ms, 64MB Cache	S26361-F3708-E250
500GB 7.200rpm, <9,5ms, 64MB Cache	S26361-F3708-E500
1000GB 7.200rpm, <9,5ms, 64MB Cache	S26361-F3708-E1000
max. 8x per system	

SAS 6Gb/s 2.5" with hot plug/hot replace tray	
300GB 10000rpm, <4,5ms, 32MB Cache	S26361-F5247-E130
450GB 10000rpm, <4,5ms, 32MB Cache	S26361-F5247-E145
600GB 10000rpm, <4,5ms, 32MB Cache	S26361-F5247-E160
900GB 10000rpm, <4,5ms, 32MB Cache	S26361-F5247-E190
1200GB 10000rpm, <4,5ms, 64MB Cache	S26361-F5247-E112

146GB 15krpm, <4,5ms, 32MB Cache	S26361-F4482-E514
300GB 15krpm, <4,5ms, 32MB Cache	S26361-F4482-E530
450GB 15krpm, <3,0ms, 64MB Cache	S26361-F4482-E545
600GB 15krpm, <3,0ms, 64MB Cache	S26361-F4482-E560

SAS 12Gb/s 2.5" with hot plug/hot replace tray	
300GB 10000rpm, 128MB Cache, 512n	S26361-F5551-E130
600GB 10000rpm, 128MB Cache, 512n	S26361-F5551-E160
900GB 10000rpm, 128MB Cache, 512n	S26361-F5551-E190
1.2TB 10000rpm, 128MB Cache, 512n	S26361-F5551-E112
1.8TB 10000rpm, 128MB Cache, 512e	S26361-F5544-E118
max. 8x per system	

8x

H



HDD 512e
 512e drives are not supported with the current versions of vSphere and VSAN

H

Section VIII External SAS Disk Array

Section IX Internal Disk Array

SATA Configuration

SATA Base Units contain a 6-port on-board SATA controller supporting RAID Levels 0, 1, 10

SAS Configuration

i you can choose between 3 types of 8 port SAS controller for the Base Unit:
 - LSI 2008 based Modular RAID 0,1 (IME)
 - LSI 2108 based Modular RAID 5,6
 - LSI 2208 based Modular RAID 5,6
 if you want to use SAS harddisks or more than 4 harddisks, then one Controller is required
 On special request based on customising projects up to 2 SATA 2.5" SSDs can be configured without a controller
S26361-F3669-E4 does not support 3.5" ECO SATA HDD (S26361-F3700-E250/E500)

Controller for 1 to 4 LFF (3.5") or 1 to 8 SFF (2.5") HDD

1x

S26361-F3554-E8
 RAID Ctrl SAS 6G 8port internal
 Based on chip LSI SAS2008
 LSI MegaRAID
 no Cache, no BBU
 RAID 0, 1 & 1E
 Support for 3Gb/s and 6Gb/s
 SATA and SAS hard drives
 PCIe x4
 Low-profile MD2 form factor
 max. 1x per system

S26361-F3554-E512
 RAID Ctrl SAS 6G 8port internal
 Based on chip LSI SAS2108
 LSI MegaRAID
 512MB Cache with ECC
 RAID 0, 1, 10, 5, 50, 6, 60
 Support for 3Gb/s and 6Gb/s
 SATA and SAS hard drives
 PCIe x4
 Low-profile MD2 form factor
 max. 1 per system

S26361-F3669-E4
 RAID Ctrl SAS 6G 1GB (D3116C)
 Based on chip LSI SAS2208
 LSI MegaRAID
 1GB Cache with ECC
 RAID 0, 1, 10, 5, 50, 6, 60
 optional FBU
 Support for 3Gb/s and 6Gb/s
 SATA and SAS hard drives
 PCIe 3.0 x8
 Low-profile MD2 form factor
 max. 1x per system

S26361-F3669-E660
 RAID Advanced Software Options
 License Activation Key
 for CacheCade Pro 2.0 & FastPath
 for 1 Controller

S26361-F3669-L660
 RAID Advanced Software Options
 License Activation Key
 for CacheCade Pro 2.0 & FastPath
 for 1 Controller

S26361-F3669-E100
 TFM Module for FBU option
 (flash and FBU control logic)
 max. 1x per Controller

S26361-F3669-E155
 Flash Backup Unit
 with 55cm cable set
 max. 1x per Controller

Upgrade RAID controllers
 RAID controller bulk delivery
 F3554-L8/L512, F3669-L4)

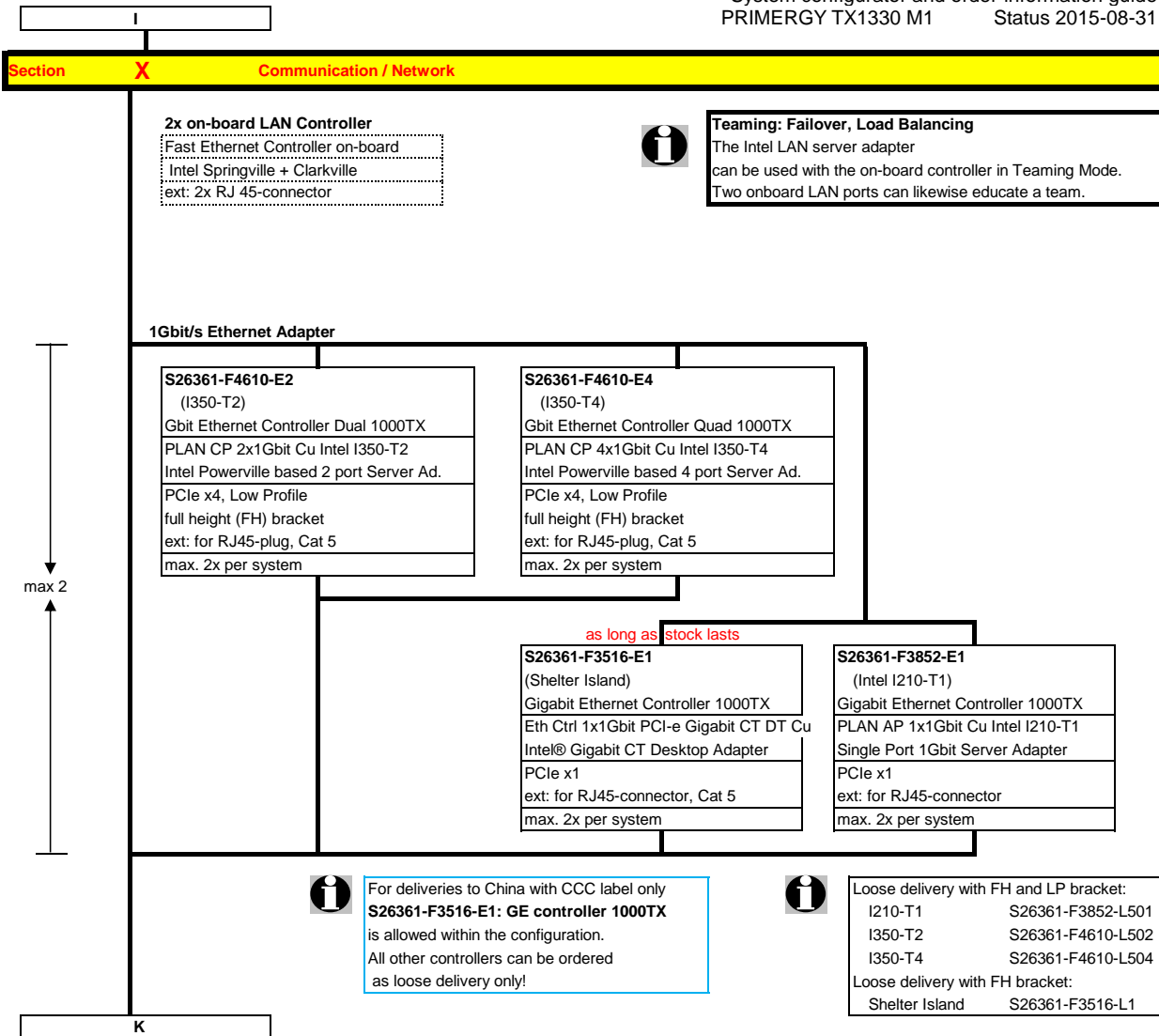
Upgrade FBU
S26361-F3669-L100
 TFM Module for FBU option
 (flash and FBU control logic)
 max. 1x per Controller

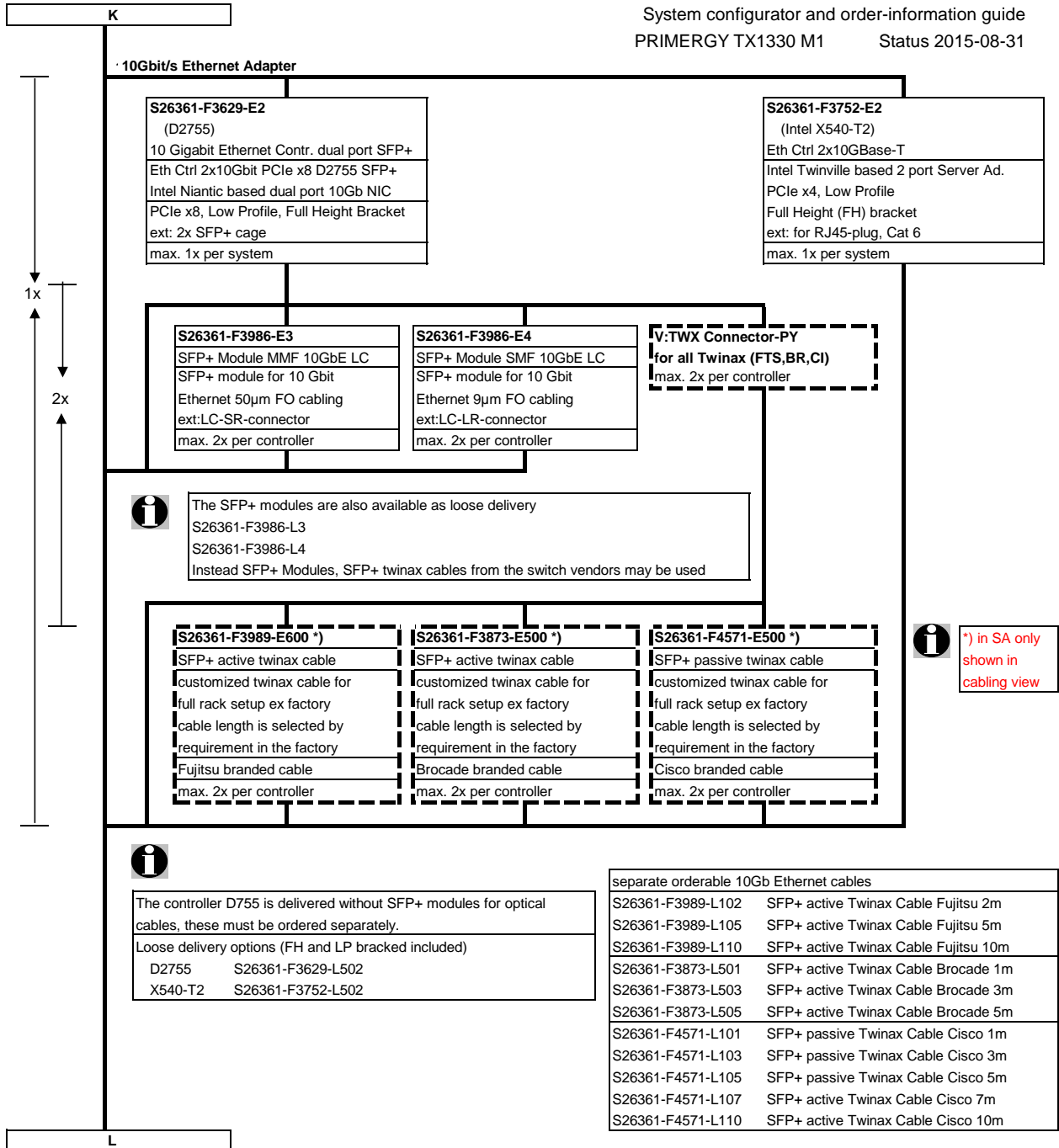
S26361-F3669-L110
 Flash Backup Unit
 with 25cm, 55cm, 70cm cable set
 max. 1x per Controller

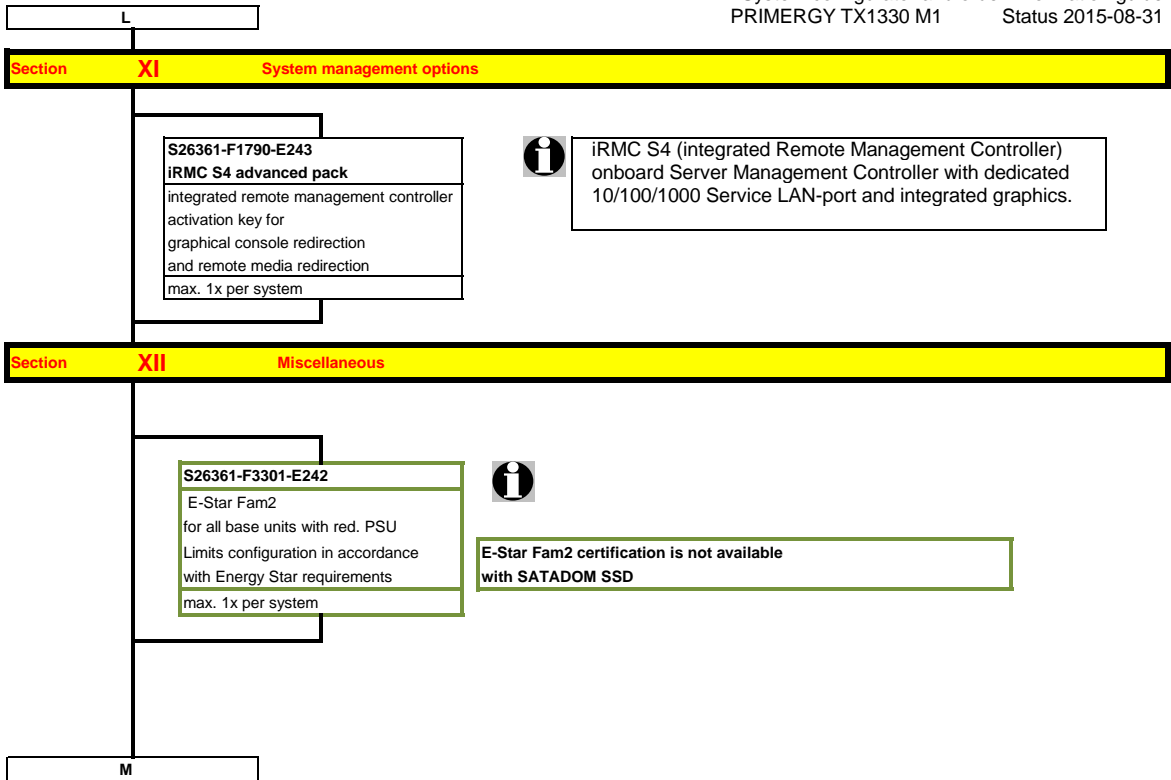
SAS controller for internal backup

S26361-F3554-E118
 PSAS CP200i
 Based on chip LSI SAS2008
 SAS 6Gb/sec
 int: 8 port
 PCIe 2.0 x8
 max. x per system

I







M

Section XIII Country specific power cords / Region Kits

S26361-F3301-E120
 CCC certification for China

i Since beginning of 2012 the specifications for the approval and production monitoring for China (CCC) have become stricter. This is why the CCC certification label must in future be ordered separately

S26361-F1452-E100
 REGION KIT APAC/EMEA/India
 For Shipments to Asia pacific, EMEA or India regions
 1x per system

S26361-F1452-E110
 REGION KIT JP
 For Shipments to Japan regions
 1x per system

S26361-F1452-E130
 REGION KIT America
 For Shipments to America
 1x per system

i A country specific power cord has to be ordered for all floorstand versions:
 - once per basic unit and an additional second cable
 - if an second hot plug, redundant power supply modul is ordered.

PRIMERGY TX1330 M1 Floorstand

PRIMERGY TX1330 M1 Rack

Power cord for following countries:
 1,8 m, grey

T26139-Y1740-E10	D, A, B, F, NL, FIN, S, N, E, P, RUS, TR
T26139-Y1742-E10	USA, Canada
T26139-Y1743-E10	Switzerland
T26139-Y1744-E10	UK, Ireland
T26139-Y1745-E10	Italy
T26139-Y1746-E10	Denmark
T26139-Y1751-E10	China
T26139-Y3850-E10	Option "no powercord", for Countries without specific cable orderable

Power cord options (1x per PSU)

T26139-Y1968-E100	Powercord for rack, 4m, grey, IEC 320 C13 -> C14 connector
T26139-Y1742-E10	1,8i USA, Canada, 1,8m, grey
T26139-Y3850-E10	Option "no powercord", for Countries without specific cable orderable

max. 2 x

i **T26139-Y1742-E10 USA, Canada**
 For shipments to USA&Canada, you have to order one power cord (1,8m, grey) per power supply.

Optional Power cord for the following countries:
 1.8m, grey

T26139-Y1740-L10	D, A, B, F, NL, FIN, N, S, E, P, RUS, TR
T26139-Y1742-L10	USA, Canada
T26139-Y1744-L10	UK, IR
T26139-Y1745-L10	Italy
T26139-Y1746-L10	Denmark
T26139-Y1751-L10	China

i **Options and other peripherals**
 For other options, refer to SystemArchitect and Pricelist.
 These options are supplied lose with the shipment.
 For suitable peripherals for this product, please refer to SystemArcitect.

Option for Floorstand

USB keyboards for floorstand versions for following countries:

USB standard Keyboard KB521		USB professional Keyboard KBPC PX ECO
S26381-K521-E170	Switzerland	S26381-K341-E170
S26381-K521-E104	Czech/Slovak	S26381-K341-E104
S26381-K521-E120	Germany	S26381-K341-E120
S26381-K521-E180	Spain	S26381-K341-E180
S26381-K521-E140	France	S26381-K341-E140
S26381-K521-E165	United Kingdom	S26381-K341-E165
S26381-K521-E185	Italy	S26381-K341-E185
S26381-K521-E154	Sweden / Finland	S26381-K341-E154
S26381-K521-E102	USA / international	S26381-K341-E110

option for floorstand

Optional Mouse
 S26381-K457-E100 Mouse M510 black
 S26381-K457-E101 Mouse M510 grey

End PRIMERGY TX1330 M1

