

NEWARK, NEW JERSEY

AL-285 (FAA)

# ILS RWY 22L

NEWARK LIBERTY INTL (EWR)

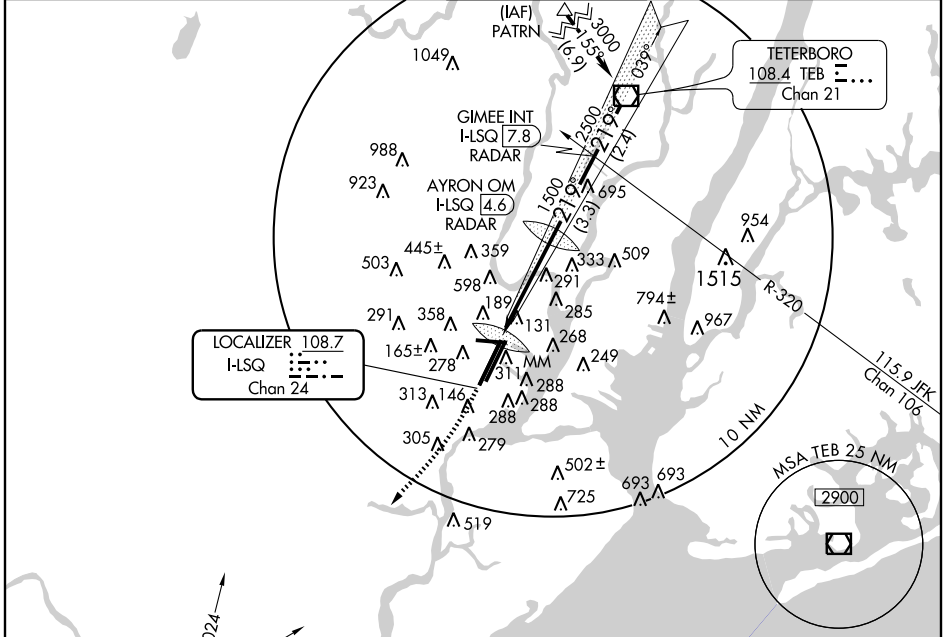
LOC/DME H-LSQ	APP CRS	Rwy Idg	22L	22R
<b>108.7</b>	<b>219°</b>	TDZE	<b>8206</b>	<b>9560</b>
Chan <b>24</b>		Apt Elev	<b>11</b>	<b>11</b>
			<b>18</b>	<b>18</b>

**▼** Inoperative table does not apply to SIDESTEP RWY 22R Cats A/B.  
**▲** For inoperative MALSRS, increase S-ILS 22L visibility to RVR 5000.



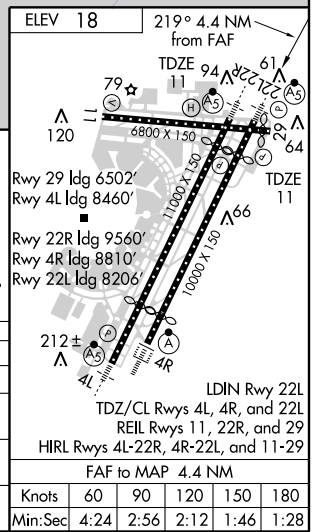
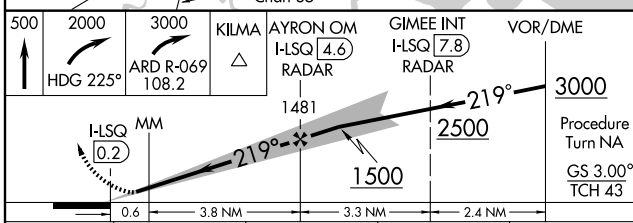
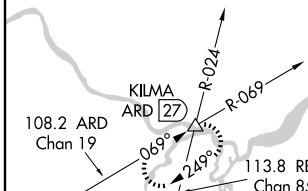
**MISSED APPROACH:** Climb to 500, then climbing right turn to 2000 heading 225° then climbing right turn to 3000 via ARD R-069 to KILMA Int and hold.

NEWARK ATIS <b>115.7 134.825</b>	NEW YORK APP CON <b>128.55 379.9</b>	NEWARK TOWER <b>118.3 257.6</b>	GND CON <b>121.8</b>	CLNC DEL <b>118.85</b>
-------------------------------------	---	------------------------------------	-------------------------	---------------------------



NE-2, 03 JUL 2008 to 31 JUL 2008

NE-2, 03 JUL 2008 to 31 JUL 2008



CATEGORY	A	B	C	D
S-ILS 22L	227/18 216 (300-½)			
S-LOC 22L	560/24	549 (600-½)	560/50	560/60
SIDESTEP RWY 22R	560/50 549 (600-1)		560-1½	549 (600-1½)
CIRCLING	660-1	642 (700-1)	660-1¾	900-3
			882 (900-3)	

NEWARK, NEW JERSEY  
Amdt 11A 08017

40°42'N - 74°10'W

NEWARK LIBERTY INTL (EWR)

# ILS RWY 22L