

Realization of standardized connection

DeviceXPlorer OPC Server



	AAAA	BBBB
Abcd	15,118	45.8
Efgh	27,455	424.4
Jklmno	38,743	5
Pqrst	63,451	63.3
Vwxyz	78,516	1.9
Abcd	79,245	6.4
Efgh	89,555	19.5
Jklmno	8,640	7.5
Pqrst	9,750	6.5

DxpSERVER Series

Ver.6

TAKEBISHI
PRODUCT
CHECK!

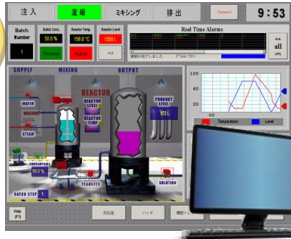


What is OPC

Interface standard for software-to-software communication

Using OPC enables system development independent of production equipment. There are many software packages that support OPC all over the world. Use in combination makes it easier to reduce development man-hours and divert assets.

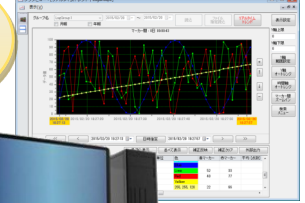
ERP/MES
SCADA
DCS



Analysis



Production/
Quality-
management



OPC Client

Instruct data acquisition/writing to OPC Server, and monitor and control equipment.

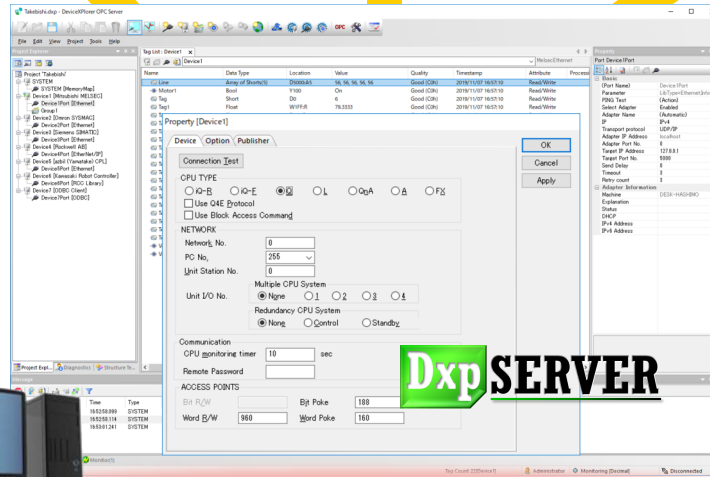
OPC

OPC

OPC

OPC Server

Communication with the control equipment, and data acquisition/writing of production information.



DeviceXplorer
OPC Server



DxpSERVER

Ethernet

RS-232C

Vendor specific network



Ideal for multi-vendor systems

Standardize equipment with mixed vendors and models

OPC can absorb vendor-specific communication specifications and standardize host systems. OPC Server can communicate with controllers through various networks such as Ethernet and Serial. And protocols such as CC-Link IE, Ethernet/IP.



Vendor-specific communication specifications
Physical interfaces (Serial·Ethernet)

OPC Server
(DxpSERVER)

OPC

DxpSERVER

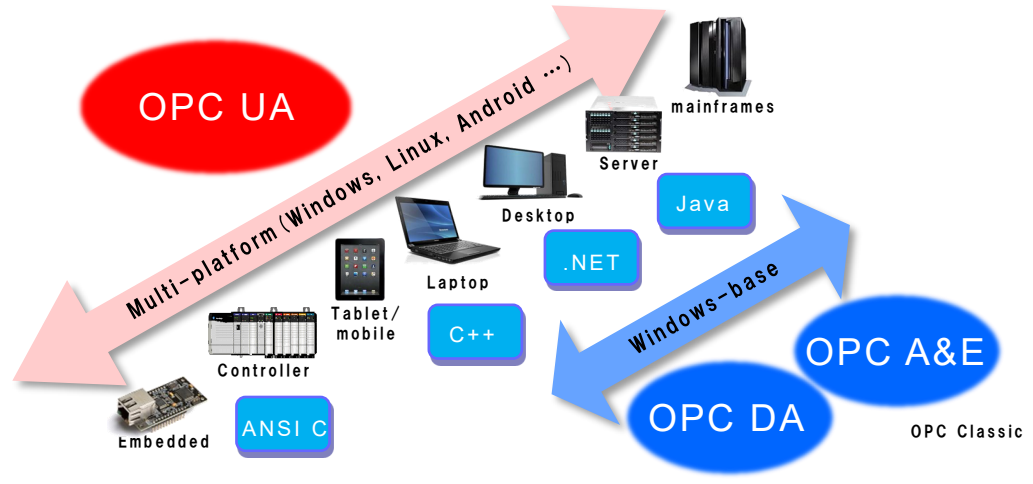
What is OPC UA

International standard "IEC62541" in the industrial field

Features

1. Platform independent

Previous OPC Classic was only applicable to Windows-based systems, it enables to develop applications for various platforms. The application area has been expanding from embedded to tablet and mainframe.



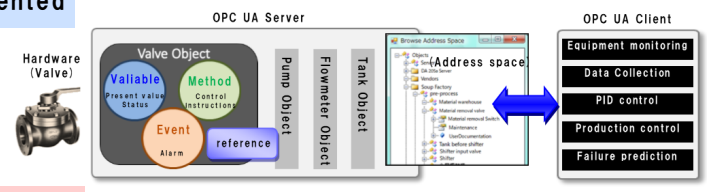
2. Information model works

*DeviceXPlorer OPC Server plans to support in the future.

Information model is a definition of information exchanged between applications. By using an information model, complex information can be accurately exchanged between applications. It is possible to share and achieve interoperability beyond the boundaries of each vendor.

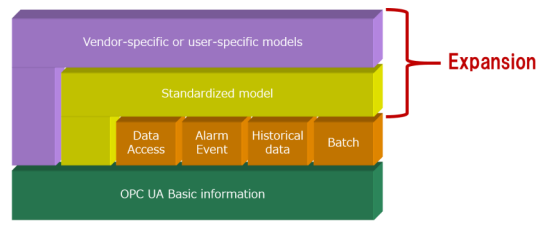
Information is expressed in object-oriented

Even complex multilayer structures can be defined as modeled information.



Information definition can be expanded

Activities are underway to capitalize the standard models of each industry and industrial field as OPC UA information models. Collaboration with other standardization organizations in progress, such as PLCopen and umati.



3. High security communication

OPC UA can flexibly respond to security requirements that varies in various area as a highly reliable industrial communication standard. Enables select an authentication/encryption method to protect important data from eavesdropping and spoofing threats.

Countermeasures against threats

Threat	Measures built into OPC UA
Wiretapping Message fabrication, impersonation Message falsification Message resend Invalid message :	Encryption Signature Authentication Signature data verification Sequence number verification Parameter validation :

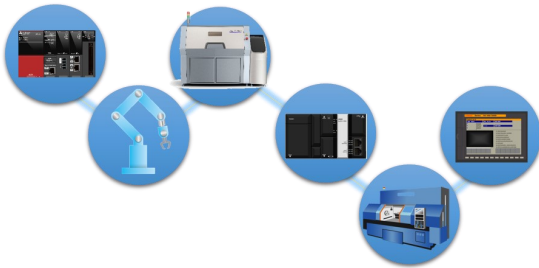
Communication software for device data

DeviceXPlorer OPC S

Point
1

230 compatible devices
Increasing connectable models

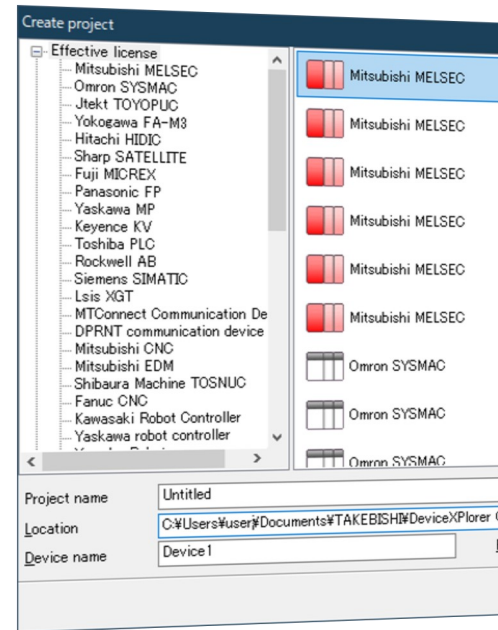
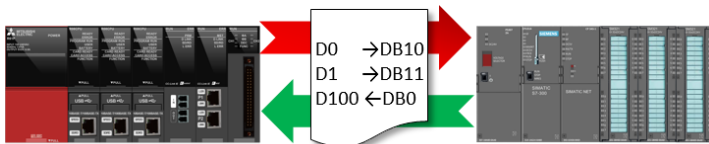
DxpSERVER supports connectivity to Machine tools and EtherNet/IP devices in addition to conventional connectivity such as PLCs, robots, and Barcode readers. Also it works as OPC UA Client and enable to data sharing with other OPC UA server.



Point
2

Rich function
Value bridging & script

Data can be exchanged between devices from different vendors. Logic including four arithmetic operations with fixed period/event execution is also possible.



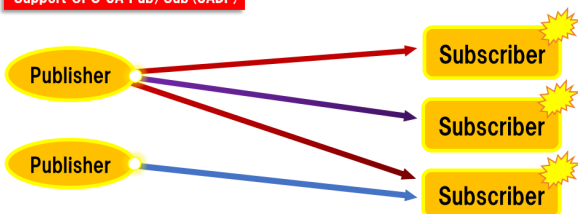
Point
3

OPC UA Pub/Sub compatible
OPC UA 1.04 specification compliant

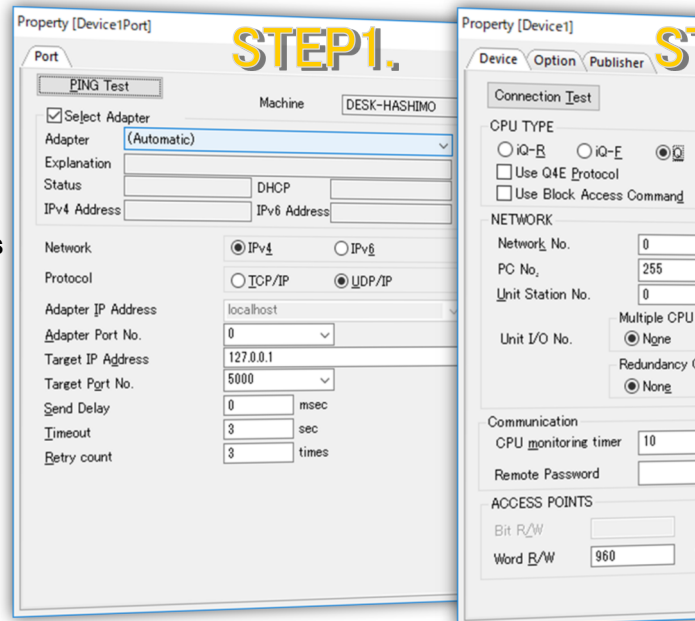
Compared to the conventional server / client configuration, communication load can be reduced and time lag can be prevented when connecting N: N.

- *Publisher: Multicast transmission of data collected from devices
- *Subscriber: Receives messages sent by publishers

Support OPC UA Pub/Sub (UADP)



3 Step / Easy Setting



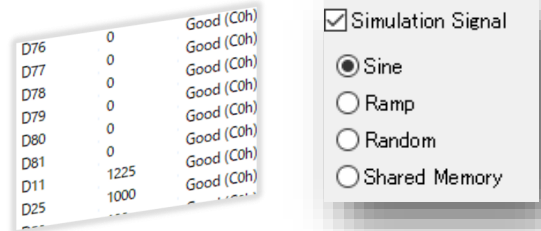
collection server

Ver.6



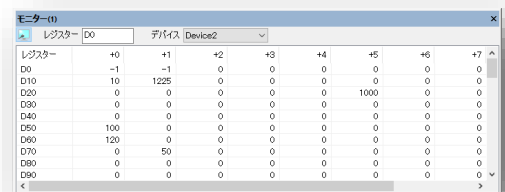
Tag value simulation

- Generate tag values
- Simulation type can be selected
- Ideal for debugging without control equipment



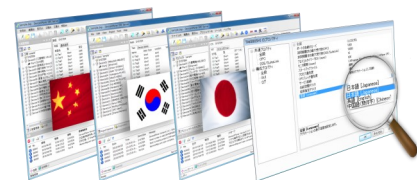
Value monitoring

- Check the current value of the specified register
- Development of host system and collaboration test in possible without PLC tool



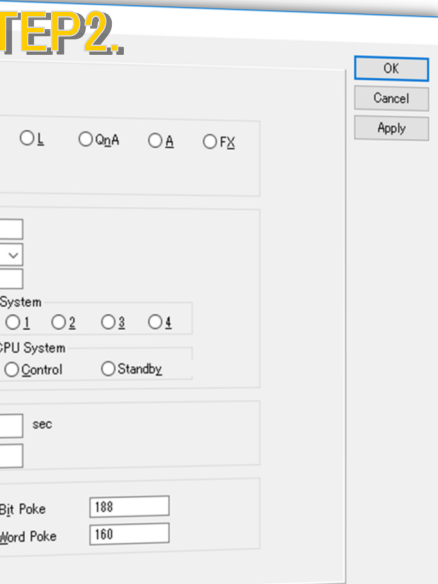
Multilingual display

- Enable to dynamic change of a display language, such as Japanese, English, Chinese (Traditional and Simplified) and Korean.
- Ideal for overseas system project



- ① Communication method (Port Setting)
- ② Model selection (Device Setting)
- ③ Acquisition data address (Tag Setting)

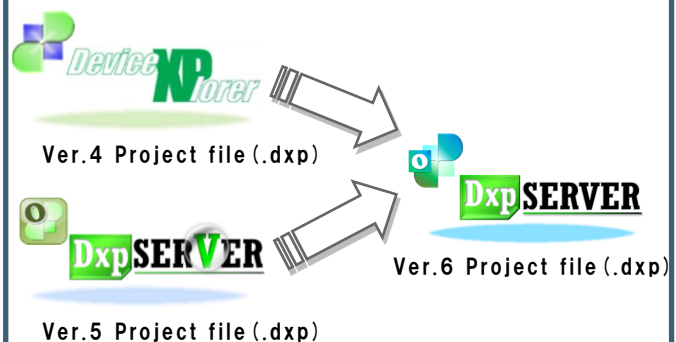
STEP2.



STEP3.

Compatible with old products

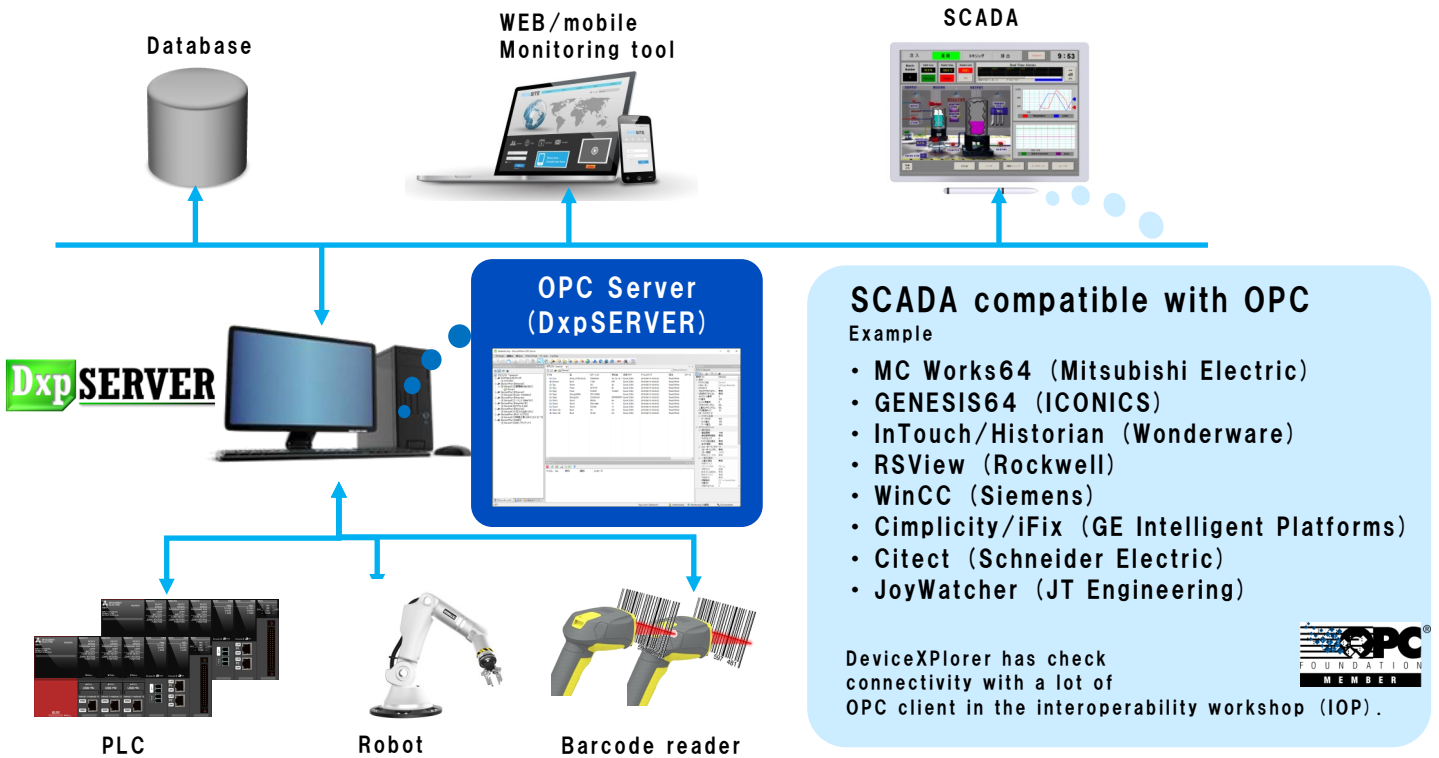
- Old Project files are compatible with Ver.6.
- * Ver.3 settings are convertible for Ver.6 with a dedicated tool.



Case Study

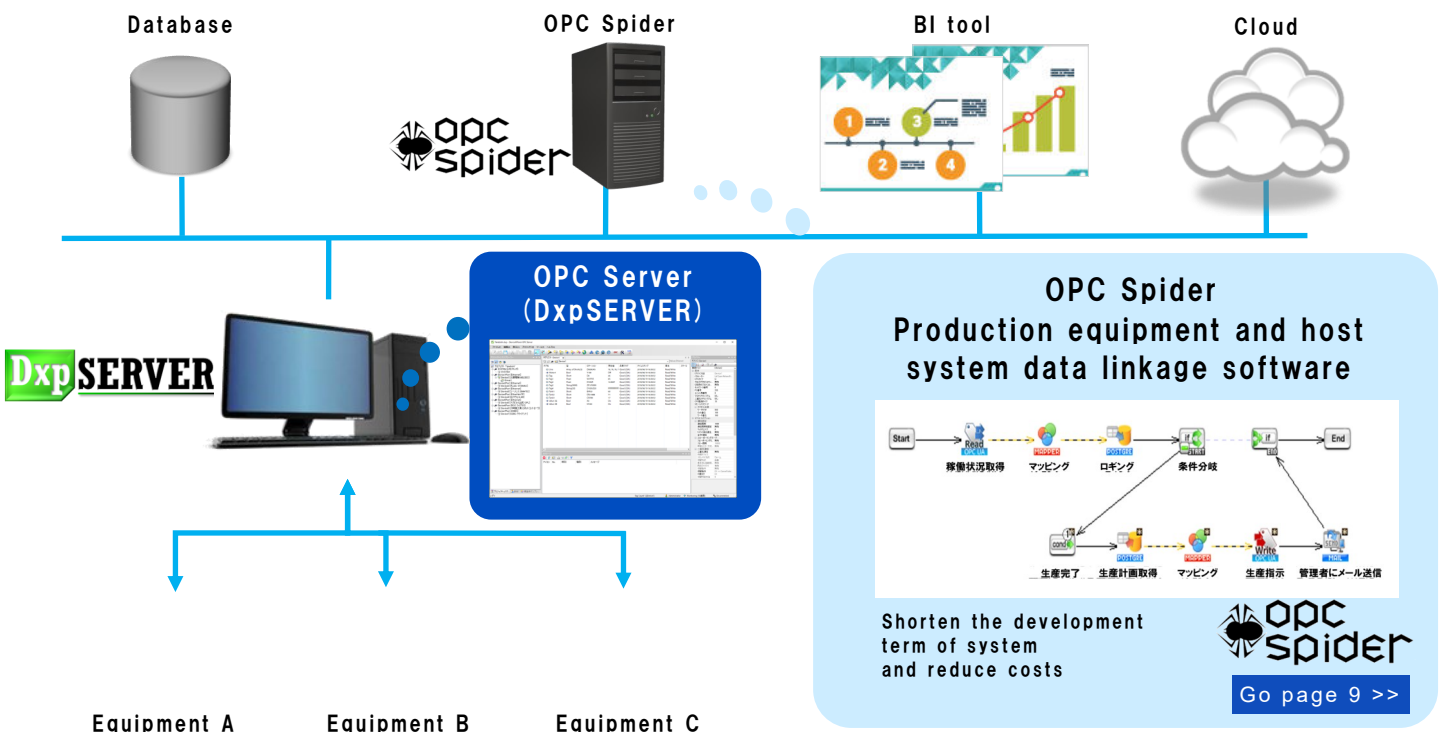
(1) Facility monitoring

- Visualization of equipment in combination with SCADA package and BI tools
- Monitors equipment operating status and alarms through screen displays and E-mail notifications
- The production site can be grasped in real time, and malfunctions are detected immediately



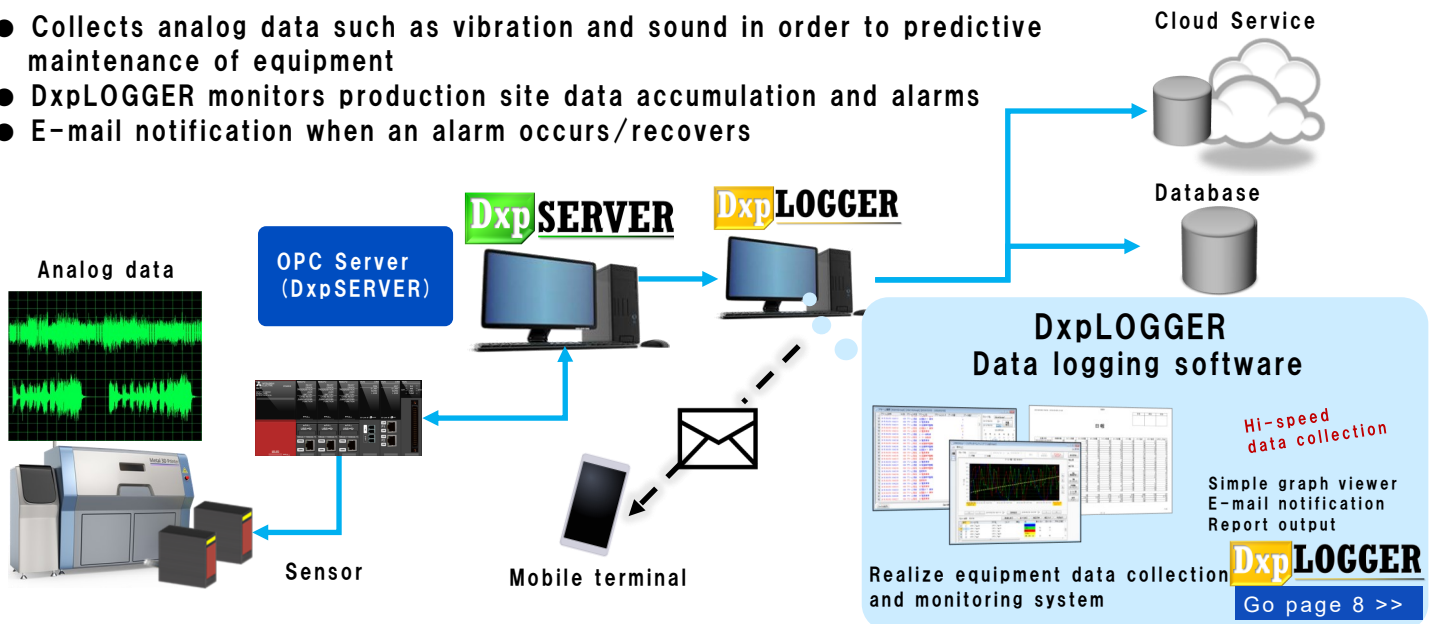
(2) Production management

- Production results are collected via the OPC client and automatically stored in the database
- Easy data linkage between different systems in combination with OPC Spider
- Downloads production instructions from MES/ERP to equipment



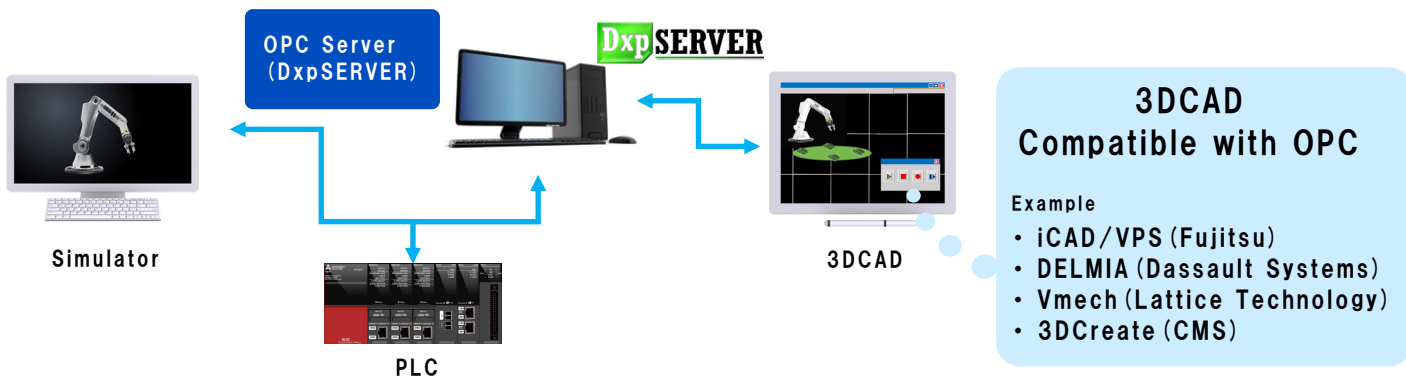
(3) Simple data collection

- Collects analog data such as vibration and sound in order to predictive maintenance of equipment
- DxpLOGGER monitors production site data accumulation and alarms
- E-mail notification when an alarm occurs/recovers



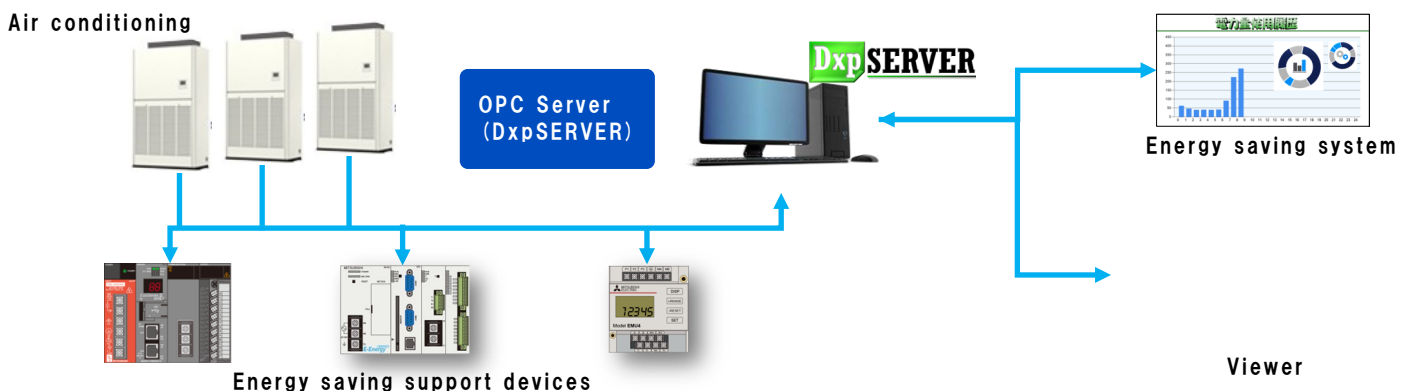
(4) Simulation

- Uses 3DCAD and CAE to realize equipment simulation by virtual engineering
- Prevents unexpected accidents by checking robot arm interference and carrying test
- Shortens start-up time through test automation



(5) Power monitoring and energy saving

- Monitors and controls of power consumption in cooperation with energy saving support system
- Visualizations of energy meter with energy saving support tool and web browsers
- Distributes the air conditioning operating load according to the power usage



Introduction of OPC products

DeviceGateway

OPC Server



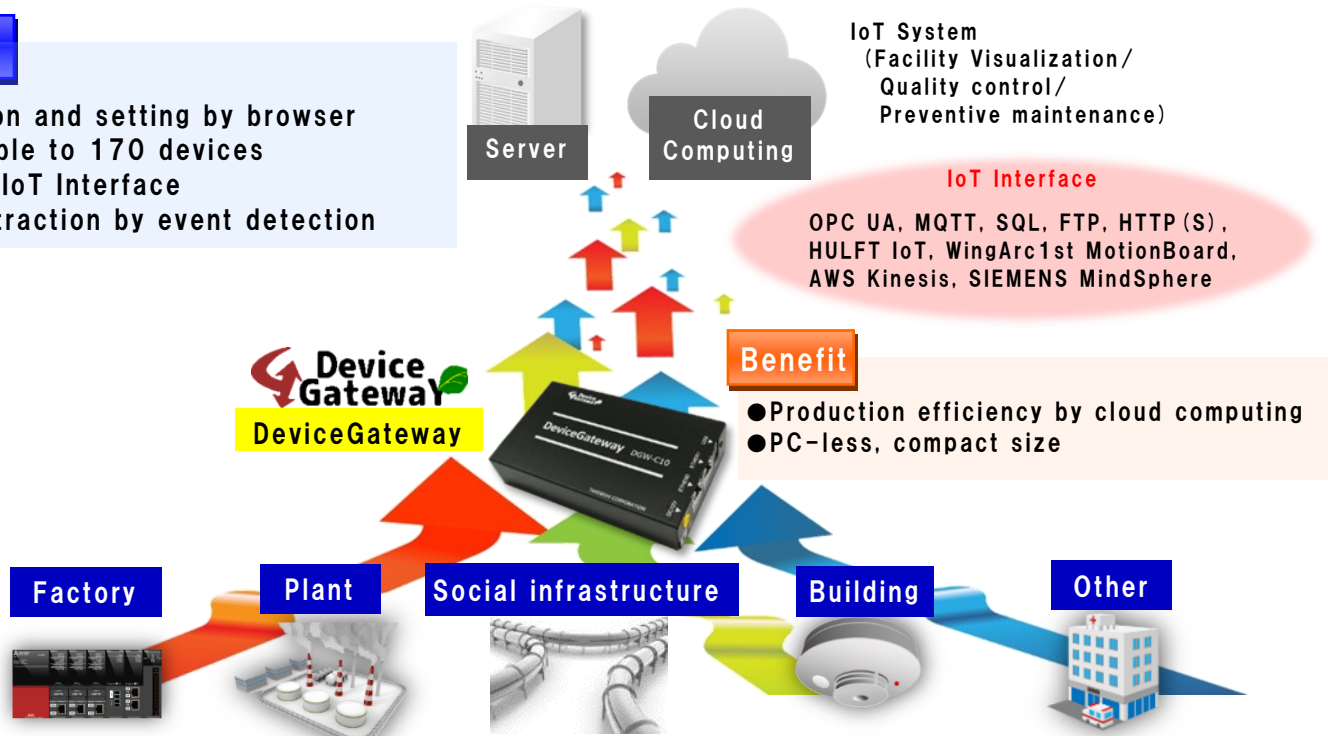
Data Access Unit for IoT

Bridging production site information to host systems and IoT services.

Provides data access to equipment in the factory and facility equipment in the building.

Features

- Operation and setting by browser
- Accessible to 170 devices
- Various IoT Interface
- Data extraction by event detection



DeviceXplorer Data Logger

OPC Client



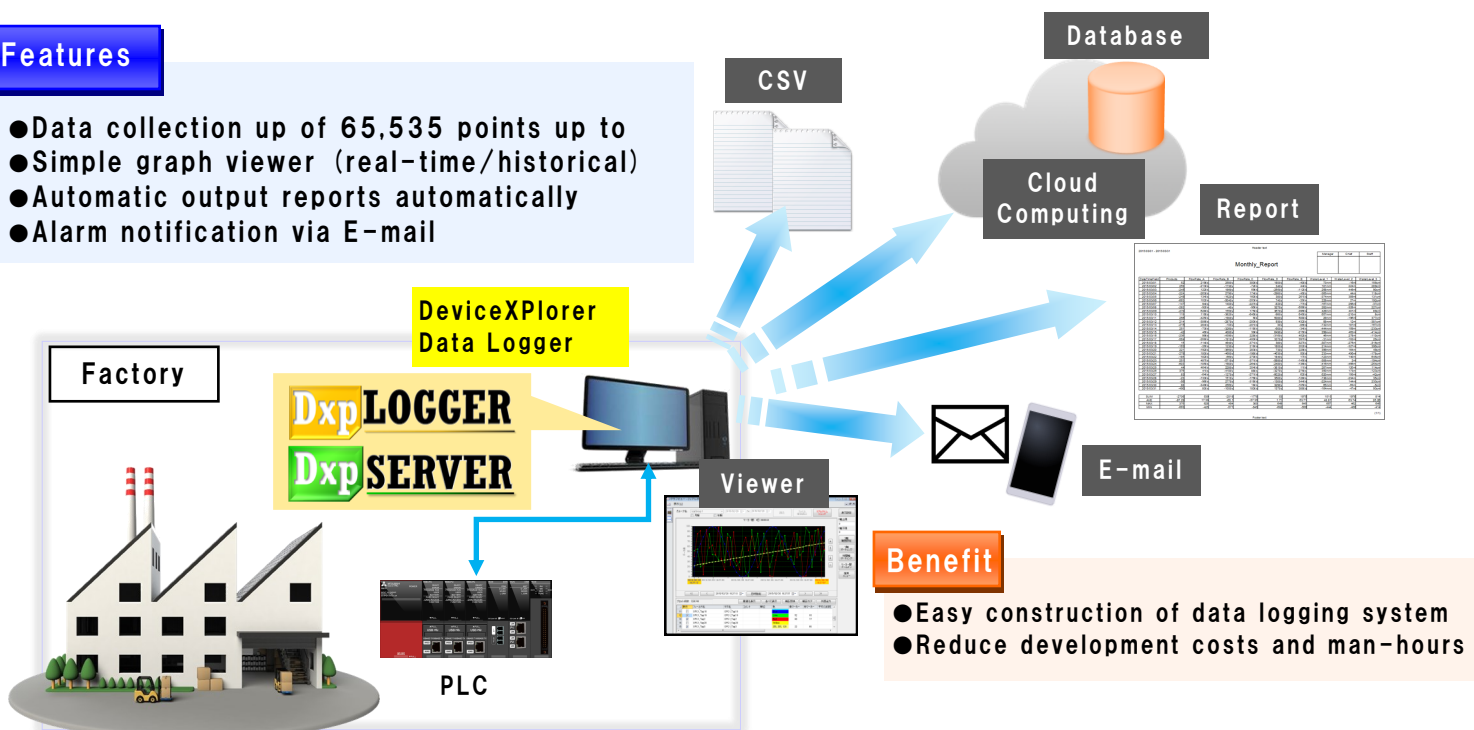
Industrial data collection software

Logging data to CSV or general-purpose database according to the cyclic or trigger conditions.

Uses an OPC Server, it collects production site information in real time.

Features

- Data collection up of 65,535 points up to
- Simple graph viewer (real-time/historical)
- Automatic output reports automatically
- Alarm notification via E-mail



FileArk FA Edition

OPC Server



Text file and host system linkage software

The data accumulated in the legacy equipment bridge to the host system.
Sends data when the text file is updated or request of the host system.

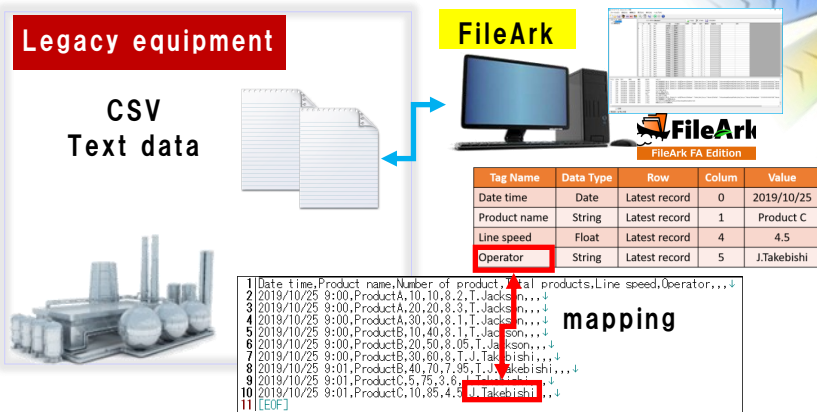
Features

- OPC UA, MQTT conversion of legacy equipment Information (File change detection/cyclic)
- Easily link text files with host systems
- Convert text data to real-time data

Operation monitoring

IoT system

Data analysis



Benefit

- Real time monitoring of legacy equipment
- Utilize asset file data in sleeping equipment

OPC Spider

OPC Client



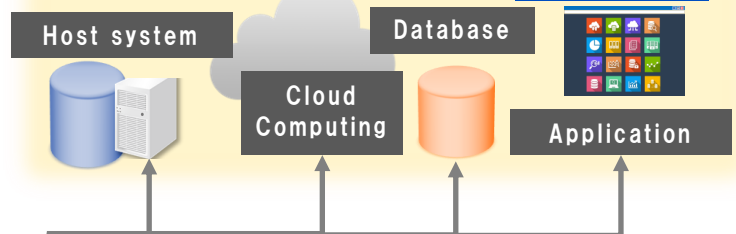
Data linkage software for production equipment and host system

Connects production system and host systems without programming.
System linkage is possible simply by arranging the componentized icons in order of processing.

Features

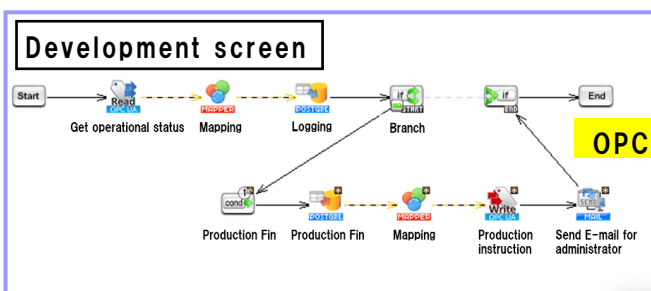
- Data linkage without programming
- GUI for easy to understanding of processing flow
- Technical skills for development not required
- Auto creation of specifications

IT system

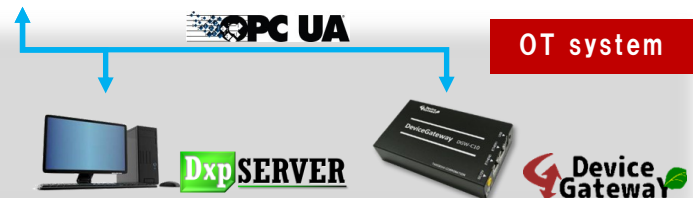


Benefit

- Linkage OT system and IT system
- Shorten development term and reduce costs



OPC Spider



Applicable Devices

PLC (Programmable Logic Controller)

(Available Edition)
EP: Enterprise
AD: Advanced
ST: Standard

Vender	Series	CPU	Ethernet	Serial	Others	EP	AD	ST				
MITSUBISHI	MELSEC iQ-R	R120/32/16/08(P) R04	Built-in Ethernet Port RJ71EN71	RJ71C24(-R2/R4)								
	MELSEC iQ-R (Motion Controller)	R64/32/16MTCPU	RJ71EN71									
	MELSEC iQ-F	FX5U(C/J)	Built-in Ethernet Port									
	MELSEC-Q (Universal Hi-speed)	Q26/13/06/04/03UDV	Built-in Ethernet Port QJ71E71-100/B2/B5	Built-in USB Port QJ71C24N(-R2/R4)								
	MELSEC-Q (Universal)	Q100/50UDEH, Q26UD(E)H Q20/13/10/06/04/03UD(E)H Q02/01/00U(J)	Built-in Ethernet Port QJ71E71-100/B2/B5	Built-in USB/Serial Port QJ71C24N(-R2/R4)								
	MELSEC-Q(Process)	Q26/13/06/04UDPV Q25/12/06/02PH	QJ71E71-100/B2/B5	Built-in USB/Serial Port QJ71C24N(-R2/R4)	Q81BD-J71GP21(S)-SX Q80BD-J71GP21(S)-SX Q81BD-J71LP21(S)-25 Q80BD-J71LP21(S)-25 Q80BD-J71LP21G Q80BD-J71BR11 Q81BD-J61BT11(N) Q80BD-J61BT11(N) Q81BD-J71GF11-T2 QJ71MT91 QJ71MB91 GX Simulator GX Works3 (Simulator /Offline Monitor) GX Works2 (Simulator) Q10W CPU (PPC-100) N2ZGF-ETB	✓	✓	✓				
	MELSEC-Q(Redundancy)	Q25/12PRH										
	MELSEC-Q (High Performance)	Q25/12/06H, Q02(H)										
	MELSEC-Q(Basic Model)	Q01, Q00(J)										
	MELSEC-Q (C Controller Module)	Q24DHCCPU-V Q12DCCPU Q06CCPU-V	Built-in Ethernet Port									
	MELSEC-Q (Motion Controller)	Q170M, Q172D(S)CPU(-S1) Q173D(S)CPU(-S1)	Built-in Ethernet Port									
	MELSEC-L	L26CPU-(P)BT L06CPU-(P) L02(S)CPU-(P)	Built-in Ethernet Port LJ71E71-100	Built-in USB Port LJ71C24(-R2) L6ADP-R2/R4								
	MELSEC-FX	FX3S/U/UC/G/GC FX2(N/2NC/2C) FX1(S/N/NC), FX0(S/N)	FX3U-ENET(-L) FX3U-ENET-ADP	Built-in Serial Port FXxx-232/485-BD FXxx-232/485ADP(-MB)								
MELSEC-QnA	Q4A(R) Q3A Q2A(S/SH)(-S1)	A(1S)J71QE71(N)-T A(1S)J71QE71(N)-B2/B5	Built-in Serial Port AJ71QC24(N)(-R2/R4) A1SJ71QC24(N)(-R2)									
MELSEC-A	A4U, A3(N/A/U) A2(N/A/U)(S/SH)(-S1) A1(N)(S/SH)	AJ71E71(-S3) A(1S)J71E71(N)-T A(1S)J71E71(N)-B2/B5	Built-in Serial Port A(1S)J71UC24 AJ71C24-S8									
OMRON	SYSMAC-NX ¹¹	NX701	Built-in Ethernet Port						CX-Compolet ¹¹			
	SYSMAC-NJ ¹¹	NJ101, NJ301, NJ501	Built-in Ethernet Port CJ1W-EIP21									
	SYSMAC-CJ	CJ2H, CJ2M CJ1G, CJ1H, CJ1M	Built-in Ethernet Port CJ1W-ETN11/21 CJ1W-EIP21	Built-in USB/Serial Port CJ1W-SCU42/32/22 CJ1W-SCU41/31(-V1) CJ1W-SCU21(-V1)								
	SYSMAC-CS	CS1G CS1H CS1D	CS1W-ETN21/11/01 CS1W-EIP21 CS1D-ETN21D	Built-in USB/Serial Port CS1W-SCU31/21(-V1) CS1W-SCB41/21(-V1)								
	SYSMAC-CP	CP2E CP1E CP1L(-EM/EL) CP1H	Built-in Ethernet Port CP1W-CIF41 CP1L-ETN CJ1W-ETN21/EIP21	CP1W-CIF12/11/01 CJ1W-SCU41/31(-V1) CJ1W-SCU21(-V1)	SYSMAC Gateway ¹² FinsGateway	✓	✓	✓				
	SYSMAC-CV	CVM1(D), CV2000 CV1000, CV500	CV500-ETN01	Built-in Serial Port CV500-LK201								
	SYSMAC-C	C200H CQM1(H) CPM1/2 C2000H, C1000H		Built-in Serial Port C500-LK203/201/103/101 C200H-LK202/201/101 C120-LK202/201/101								
	SYSMAC-NSJ	NSJ	Built-in Ethernet Port NSJW-ETN21									
YOKOGAWA	e-RT3	RP71-R	Built-in Ethernet Port LE12-1T									
	FA-M3V	F3SP71-4S/N F3SP76-7S/N	Built-in Ethernet Port F3LE12/11/01-0T									
	FA-M3R	F3SP67-6S, F3SP66-4S F3SP59-7S, F3SP58-6H/S F3SP53-4H/S, F3SP38-6N/S F3SP35-5N, F3SP28-3S/N F3SP25-2N, F3SP22-0S F3SP21-0N, F3SP08/05-0P	F3LE12-0T/1T F3LE11-0T/1T F3LE01-0T/1T/5T	F3LC12-1F F3LC11-2F/1F F3LC11-2N/1N		✓	✓	✓				
JTEKT	TOYOPUC-Nano	10GX	Built-in Ethernet Port ZET									
	TOYOPUC-Plus	Plus CPU	Built-in Ethernet Port									
	TOYOPUC-PC10	PC10G(E) PC10P	Built-in Ethernet Port EN-I/F(-T), FL/ET-net-5 FL/ET-T-V2(H) 2PORT-EFR			✓	✓	✓				
	TOYOPUC-PC3J	PC3JG-P PC3J(L/D/M/NM/NF)-CPU MULTI-GW	EN-I/F(-T), FL/ET-net-5 FL/ET-T-V2(H), 2PORT-EFR	Built-in CPU Port ¹³								
	TOYOPUC-PC2J	PC2J(C/S/R) PC2J16(R/H/PR/HR)	EN-I/F(-T), FL/ET-net-5 FL/ET-T-V2(H)									



(Available Edition)
 EP: Enterprise
 AD: Advanced
 ST: Standard

Vender	Series	CPU	Ethernet	Serial	EP	AD	ST
HITACHI	HX ¹⁴	HX-CP1S08(M)/HX@-1H16(M)	Built-in Ethernet Port				
	EH150-EHV	EHV-CPU128/64/32/16	EH-ETH(2) Built-in Ethernet Port				
	EH150	EH-CPU548/516/316A EH-CPU208A/104A	EH-ETH(2)		✓	✓	✓
	H	H-4010/2002/1002 H-702/302/252	LAN-ETH(2)				
SHARP	SATELLITE JW-300	JW-311CU / 312CU / 321CU JW-322CU / 331CU / 332CU JW-341CU / 342CU / 352CU JW-362CU	JW-300/25T/255CM		✓	✓	✓
	SATELLITE JW-30H	JW-31CUH/H1 JW-32CUH/H1 JW-33CUH/H1, CUH2, CUH3					
	SATELLITE JW-20H	JW-21CU / 22CU					
	SATELLITE JW-100H	JW100 / 100H / 100CUH	JW-50CM/51CM		✓	✓	✓
	SATELLITE JW-70H	JW70 / 70H					
	SATELLITE JW-50H	JW50 / 50H	Z339J		✓	✓	✓
	J-board Z-500	Z-511J / 512J					
	J-board Z-300	Z-311J / 312J					
FUJI	MICREX-SX SPH5000	NP1PU1-512H	Built-in Ethernet Port NP1L-ET1/2	NP1L-RS1/2/3/4/5	✓	✓	✓
	MICREX-SX SPH3000	NP1PU-48E / 256E NP1PU2-048E					
	MICREX-SX SPH2000	NP1PM-48R / 48E / 256E / 256H					
	MICREX-SX SPH300EX	NP1PS-74D					
	MICREX-SX SPH300	NP1PS-32(R) / 74(R) / 117(R) NP1PS-245					
	MICREX-SX SPH200	NP1PH-08 / 16					
	MICREX-F F150	FPU150S / 152S / 154S	FFU170B	FFU120B	✓	✓	✓
	MICREX-F F140	FPU140S					
	MICREX-F F120	FPU120S					
	MICREX-F F70	F70(S)	NC1L-ET1	NC1L-RS2/4	✓	✓	✓
	MICREX-F F55	F55		NV1L-RS2			
MICREX-F F50	F50		Built-in Serial Port				
PANASONIC ¹⁵	FP0H	FP0H C32ET/C32EP	Built-in Ethernet Port		✓	✓	✓
	FP7	FP7	Built-in Ethernet Port	AFP7CC(S1/S2/M1/M2) AFP7CCS1M1			
	FP2	FP2(SH)	FP2 ET-LAN(2)				
	FP-X	FP-X C60/30/14 R/T/P(D)	FP-X COM5	FP-X COM1/2/3/4/5/6			
	FPΣ	FPΣ		AFP801/802/806			
	FP0R	FP0R					
	FP-e	FP-e		Built-in Serial Port			
	Web Datalogger Unit	AFL1200	Built-in Ethernet Port				
KEYENCE	KV-8000	KV-8000	Built-in Ethernet Port KV-XLE02 KV-LE21V/EP21V KV-LE20(V/A)		✓	✓	✓
	KV-7000	KV-7500/7300					
	KV-5000	KV-5500/5000					
	KV-3000	KV-3000					
	KV-1000	KV-1000					
	KV-700	KV-700					
	KV Nano	KV-Nano					

Applicable Devices

PLC (Programmable Logic Controller)

(Available Edition)
 EP: Enterprise
 AD: Advanced
 ST: Standard

Vender	Series	CPU	Ethernet	Serial	EP	AD	ST
TOSHIBA	nv(type1, type1 light)	PU811, PUM11/12/14	EN811/EN821				
	V(S3)	S3PU65A/55A/45A	EN711/721/731 EN741/751(A)/761				
	V(S2)	S2PU82/72A/72D	EN611/621/631/641 EN651(A)/661		✓	✓	✓
	V(S2T)	PU672T/662T	EN611/631/651A				
	PROSEC T(T3H)	PU325H/326H	EN311				
	PROSEC T(T2N)	PU235N/245N	Built-in Ethernet Port				
YASKAWA	MP3300	CPU-301, CPU-302					
	MP3200	CPU-201, CPU-202					
	MP2400	MP2400	Built-in Ethernet Port 2181F-01/02	2181F-01/02 2171F-01	✓	✓	✓
	MP2300	MP2310, MP2300(S)					
	MP2200	MP2200					
	MP2100	MP2101T(M)		2171F-01			
	MP900	MP940, MP930		Built-in Serial Port			
	MP900	MP920	2181FA	2171F			
IDEC	MicroSmart ¹⁴	FC5A-D16RK1/D16RS1 FC5A-D32K3/D32S3 FC5A-C10R2(D/C) FC5A-C16R2(D/C) FC5A-C24R2(D/C)	Built-in Ethernet Port	Built-in Serial Port FC5A-SIF2/4 FC4A-HPC3	✓	✓	✓
KOYO	DirectLOGIC 05 ¹⁴	DL05	H0-ECOM100	D0-DCM			
	DirectLOGIC 06 ¹⁴	DL06	H0-ECOM100	D0-DCM			
	DirectLOGIC 205 ¹⁴	D2-240, D2-250, D2-260	Built-in Ethernet Port H2-ECOM/EBC100	D2-DCM			
	DirectLOGIC 305 ¹⁴	D3-340, D3-350		Built-in Serial Port			
	DirectLOGIC 405 ¹⁴	D4-450		Built-in Serial Port			
	SU ¹⁴	SU-5/5E/6B/5M/6M/6H		Built-in Serial Port U-01DM	✓	✓	✓
	KOSTAC SZ ¹⁴	SZ-4/4M		Built-in Serial Port U-01DM			
	KOSTAC S ¹⁴	SG-8B		U-01DM			
	KOSTAC PZ ¹⁴	PZ3		Built-in Serial Port			
	KOSTAC SJ ¹⁴	SJ-00DD1/2-D, SJ-00DR/AR-D SJ-02DD1/2-D, SJ-02DR-D SJ-30DD1-D	Built-in Ethernet Port	Built-in Serial Port			
T1K ¹⁴	T1K-Modbus	T1H-EBC100	Built-in Serial Port T1H-CTRIO				
SANYO DENKI	SANMOTION C ¹⁶	SMC100-A/B	Built-in Ethernet Port		✓	-	-
DELTA	AH500 ¹⁴	AH500	AH10EN-5A				
	DVP-EH ¹⁴	DVP-EH2/3					
	DVP-SV ¹⁴	DVP-SV(2)	DVPENE01-SL				
	DVP-SE ¹⁴	DVP-SE					
	DVP-MC ¹⁴	DVP-MC	Built-in Ethernet Port				
	DVP-EX ¹⁴	DVP-EX(2)					
	DVP-ES ¹⁴	DVP-ES(2)		Built-in Serial Port	✓	✓	✓
	DVP-EC ¹⁴	DVP-EC3					
	DVP-SX ¹⁴	DVP-SX(2)					
	DVP-SA ¹⁴	DVP-SA(2)					
	DVP-SS ¹⁴	DVP-SS(2)					
	DVP-SC ¹⁴	DVP-SC					
	DVP-PM ¹⁴	DVP-PM					
LSIS	XGK	XGK-CPUA/E/H/S/U					
	XGI	XGI-CPUU/H/S	XGL-EFMM XGL-EFMT		✓	✓	✓
	XGR	XGR-CPUH/F/T					

(Available Edition)
 EP: Enterprise
 AD: Advanced
 ST: Standard

Vender	Series	CPU	Ethernet	Serial	EP	AD	ST
3S	CoDeSys ^4	(General PC)	Built-in Ethernet Port	Built-in Serial Port	✓	✓	✓
ROCKWELL	GuardLogix	5570	1756-ENBT 1756-EN2T		✓	✓	✓
	ControlLogix	5550/5553/5555/5561/5562/5563 5572/5573/5574/5575/5580					
	CompactLogix	5320/5323/5330/5331/5332/5335 5345/5370/5380/5400	Built-in Ethernet Port 1769-L32E/1769-L33ER 1769-L33E/1768-ENBT				
	FlexLogix	5433/5434					
	DriveLogix	5720/5730	1788-ENBT				
SIEMENS	SIMATIC S7-1500	CPU 1511/1513-1 PN CPU 1515-2 PN CPU 1516(F)-3 PN/DP CPU 1518(F)-4 PN/DP	Built-in Ethernet Port		✓	✓	✓
	SIMATIC S7-1200	CPU 1211/1212 CPU 1214C/1215C/1217C					
	SIMATIC S7-400H	CPU 412-3H, CPU 414/417-4H					
	SIMATIC S7-400	CPU 410(E) CPU 412-1/2, CPU 417-4 CPU 414-2/3 (PN/DP) CPU 416-2/3 (PN/DP)	CP443-1				
	SIMATIC S7-300	CPU 312/314/315-2 (PN/DP) CPU 317-2 (PN/DP)	CP343-1				
	SIMATIC S7-200	CPU 222	CP243-1				
	SIMATIC WinAC	WinAC RTX	Built-in Ethernet Port				
GE	90-30	IC693CPU311/IC693CPU313 IC693CPU321/IC693CPU323 IC693CPU331/IC693CPU340 IC693CPU341/IC693CPU350 IC693CPU351/IC693CPU352 IC693CPU360/IC693CPU363 IC693CPU364/IC693CPU374 IC693CSE311/IC693CSE313 IC693CSE323/IC693CSE331 IC693CSE340		Built-in Serial Port (Power supply module)	✓	-	-

Robot Controller

Vender	Series	CPU	Ethernet	Serial	EP	AD	ST
KAWASAKI	C Controller	C Controller	Built-in Ethernet Port		✓	✓	✓
	D/D+ Controller	D/D+ Controller					
	E Controller	E Controller					
	F Controller	F Controller					
	S/S+ Controller	S/S+ Controller					
	T Controller	T Controller					
	duAro D Controller	duAro D Controller					
	duAro F Controller	duAro F Controller					
YASKAWA	Robot Simulator	MotoSimEG-VRC			✓	✓	✓
YAMAHA	RCX	RCX340	Built-in Ethernet Port		✓	-	-
	RCX-Studio						
IAI	ACON ^4	ACON-CB/CGB/CYB/PLB/POB/CA/C/CG/PL/ PO/SE/CY		Built-in Serial Port	✓	✓	✓
	DCON ^4	DCON-CB/CGB/CYB/PLB/POB/CA					
	PCON ^4	PCON-CA/CFA/CB/CGB/CFB/CGFB/CYB/PLB/ POB/C/CG/CF/PL/PO/SE/CY					
	SCON ^4	SCON-CB/CGB/CB-F/CA/CAL/CGAL/C					
	RSEL	G	Built-in Serial Port	✓	-	-	
	X-SEL	P/Q/PCT/QCT/PX/QX/R/S/RX/SX/RXD/SXD/ RA/SA/RAX/SAX/RAXD/SAXD					
	TT	TTA					
	SSEL	SSEL					
	ASEL	ASEL					
	PSEL	PSEL					
	MSEL	PC/PG/PCF/PGF/PCX/PGX					

Applicable Devices

(Available Edition)
EP: Enterprise
AD: Advanced
ST: Standard

NC (Numerical Control) Machine

Vender	Series	CPU	Ethernet	Serial	EP	AD	ST
FANUC	FANUC CNC	Series 0(i) Series 15(i) Series 16(i)/18(i)/20/21(i) Series 30i/31i/32i	Built-in Ethernet Port ^{*7}	Built-in Serial Port (DPRNT Connection)	✓	✓	✓
	FANUC Power Mate	Power Mate-D/F/H Power Mate-L					
MITSUBISHI ^{*10}	MITSUBISHI CNC	M800/M80/E80	Built-in Ethernet Port ^{*8}	Built-in Serial Port (DPRNT Connection)	✓	✓	✓
		M700V/M70V/E70					
		M700/M70					
		C80					
	MELDAS	M600	FCU6-EX875 ^{*8}	Built-in Serial Port (DPRNT Connection)	✓	-	-
		M60/60S E60/E68					
NC Trainer	NC Trainer			✓	✓	✓	
Shibaura Machine ^{*11}	TOSNUC	T-PX200 ^{*12} T-PX100, T-999	Built-in Ethernet Port	Built-in Serial Port	✓	-	-
		T-888.2, T-888					
	TCmini	TC9-00 TC7-00/01/02 TC6-00 TC5-02/03 TC3-00/01/P01/02					

Machine Tools

Vender	Series	CPU	Ethernet	Serial	EP	AD	ST
MITSUBISHI	Wire electric discharge machine	MV Series	Built-in Ethernet Port		✓	-	-
		MP Series					
		MX Series					
		NA Series					
		BA Series					
		PA Series					
	Engraving electric discharge Machine	FA Series					
		QA Series					
		SV-P Series					
	Fine hole electric discharge machine	EA Series					
		MA2000					
		VA Series					
MAZAK	INTEGREX series etc.			MTConnect Agent	✓	-	-
Sumitomo Heavy Industries	All-electric Small-sized Injection Molding Machine	SEEV-A	Built-in Ethernet Port		✓	-	-
	All-electric Injection Molding Machine	SE-DUZ					
	All-electric Middle-sized Injection Molding Machine	SEEV-A-HD					
	All-electric Injection Molding Machine	SE-HSZ					
	Super High-speed All-electric Injection Molding Machine	SE-HP					
All-electric Large-sized Injection Molding Machine	CL7000						
The Japan Steel Works	Molding Machine ^{*16}	J-ADS Series		NET100 Server	✓	-	-
		J-AD Series					
		J-EL3 Series					
		J-E3 Series					

Protocol Converter for Machine Tools

Vender	Series	CPU	Ethernet	Serial	EP	AD	ST
silix technology	Protocol Converter for CNC Machine Tools	FBR-100AN	Built-in Ethernet Port		✓	-	-

Display Panel

Vender	Series	CPU	Ethernet	Serial	EP	AD	ST
MITSUBISHI	GOT2000	GT27/25/23	Built-in Ethernet Port		✓	✓	✓
	GOT1000	GT16/15/14	Built-in Ethernet Port Extended Ethernet Unit				
HAKKO ^{*1}	MONITOUCH V8 ^{*4}	V815iX, V812 iS/S, V810 iS/S V810 iT/T, V810 iC/C, V808 iS/S V808 iC/C, V808 iCH/CH V806 iT/T, V806 iC/C, V806 iM/M	Built-in Ethernet Port	Built-in Serial Port	✓	✓	✓
	MONITOUCH V7 ^{*4}	V715, V712 iS/S, V710 iS/S V710 iT/ T, V710C, V708 iS/S V708C, V706T, V706C, V706M					
	MONITOUCH V6 ^{*4}	V608CH, V606eC, V606eM					
GRAPHTEC	Paperless Recorder ^{*15}	MT1000 Series	Built-in Ethernet Port		✓	-	-

Barcode Reader

(Available Edition)
EP: Enterprise
AD: Advanced
ST: Standard

Vender	Series	CPU	Ethernet	Serial	EP	AD	ST
KEYENCE	BL (1D-BCR)	BL-1300/1301/1350/1351(HA) BL-1370/1371	N-L1		✓	-	-
	SR (2D-BCR)	SR-D100(HA)/(H)/110 SR-650(HA)/651/652 SR-600(HA)/610	Built-in Ethernet Port N-L1				
MARS TOHKEN SOLUTION	BCR	TFIR-3172(H)	Built-in Ethernet Port		✓	-	-

Vision Sensor

Vender	Series	CPU	Ethernet	Serial	EP	AD	ST
COGNEX	DataMan (Stationary Type)	200(S)(Q)(X) 300(L)(X) / 302(L)(X) 500(X)(QL)	Built-in Ethernet Port		✓	-	-
	DataMan (Handheld)	8000 / 8100 / 8500 / 8600	DMCM-ENETM-00				
	In-Sight ¹⁴	In-Sight Micro/5000/EZ	Built-in Ethernet Port		✓	✓	✓

RFID

Vender	Series	CPU	Ethernet	Serial	EP	AD	ST
MITSUBISHI	RFID	RF-RW003/004/103/104	Built-in Ethernet Port		✓	-	-
OMRON	RFID	V680-CA5D01/02-V2		Built-in Serial Port	✓	-	-

Remote I/O System

Vender	Series	CPU	Ethernet	Serial	EP	AD	ST
M-SYSTEM	Remote I/O R1 ¹⁴	R1		RZMS-U9 R1M(S)-GH3/GH/J3/A1/D1/P4	✓	✓	✓
	Remote I/O R3 ¹⁴	R3	R3-NE1	R3-NM1/R3-NM3			
	Remote I/O R5 ¹⁴	R5(H)	R5-NE1	R5-NM1			
	Remote I/O R6 ¹⁴	R6	R6-NE1/R6-NE2	R6-NM1/R6-NM2			
	Remote I/O R7 ¹⁴	R7E	Built-in Ethernet Port	Built-in Serial Port			
	Remote I/O R8 ¹⁴	R8		R8-NM1			
	TC10 ¹⁴	TC10		TC10EM-A-M2 TC10NM-A-M2			
	Loop Controller ¹⁴	SC200, SC210					
	Tower Light PATLABOR ¹⁴	IT60(W1/RE)	Built-in Ethernet Port				
	Data Logger ¹⁴	DL8					
	Tablet Recorder ¹⁴	TR30-G					
BACnet controller ¹³	BA3-CB1	Built-in Ethernet Port		✓	-	-	
ANYWIRE	DB A40 ¹⁴	AG428-ES/EC, AG413-E1	Built-in Ethernet Port		✓	✓	✓
WAGO	I/O System	750-341/342/352 ¹⁴ 750-841/842/843/873/881	Built-in Ethernet Port		✓	✓	✓
		750-312/314/315/316 ¹⁴ 750-812/814/815/816		Built-in Serial Port			
		750-830	Built-in Ethernet Port				
MTT	Alchis ¹⁴	MRH-T etc.	MRH-T-NMT1		✓	✓	✓
Phoenix Contact	AXL F BK	AXL F BK ETH ¹⁴	Built-in Ethernet Port		✓	✓	✓
	AXL E	AXL F BK EIP ¹⁶		✓	-	-	
	Multiplexer ¹⁴	AXL E EIP ¹⁶		✓	✓	✓	
PATLITE	Signal tower ¹⁴	LA6-POE Series	Built-in Ethernet Port		✓	✓	✓
	Signal tower Reciever ¹⁴	AirGRID WD PRO Series	Built-in Ethernet Port		✓	✓	✓

Applicable Devices

Sensor, Recorder, Meter, Network switch etc.

(Available Edition)
 EP: Enterprise
 AD: Advanced
 ST: Standard

Vender	Series	CPU	Ethernet	Serial	EP	AD	ST
OMRON	Monitoring module K6CM ¹⁶	K6CM-CI2MA-EIP/K6CM-CI2MD-EIP K6CM-VBMA-EIP/K6CM-VBMD-EIP	Built-in Ethernet Port		✓	-	-
	Monitoring module K6CM ¹⁴	K6CM-CI2MA-EIP/K6CM-CI2MD-EIP K6CM-CIMA-EIP/K6CM-CIMD-EIP K6CM- VBMA-EIP/K6CM-VBMD-EIP K6CM-ISMA- EIP/K6CM-ISMD-EIP	Built-in Ethernet Port		✓	✓	✓
	Monitoring module K6PM ¹⁴	K6PM-THMD-EIP					
	Power unit ¹⁴	S8VK-X					
AZBIL	Instrumentation network	NX-S01/11/12/21 NX-D15/D25/D35 NX-DX1/DX2, NX-DY1/DY2	NX-CB1 NX-CL1/CR1 NX-TL1/TR1				
	Digital Regulation Meter	DMC50	Built-in Ethernet Port				
		DMC10					
	Digital Direction, Regulation Meter	SDC46/45/36/35/26/25/15					
	Recorder	SRF101/102/103/106/201 SRF202/203/206/212/224		Built-in Serial Port	✓	✓	✓
	Mass Flow	CMS, CMF, CMQ-V CML, MPC, MVF					
	Sensor	PBC					
	Burner Controller	AUR350C/450C, RX					
	Communication Convertor	CMC15G, CMC10B					
Program Regulation Meter	DCP31/32, DCP551/552						
YOKOGAWA	STARDOM ¹⁴	FCN, FCJ	Built-in Ethernet Port	Built-in Serial Port NFLR111/121			
	Recorder SMARTDAC+ ¹⁴	GX10/20/60/90, GP10/20					
	Recorder DXAdvanced ¹⁴	DX1012/1006/1004/1002(N/T) DX2048/2040/2030/2020/2010 DX2008/2004(T)			✓	✓	✓
	Recorder MVAAdvanced ¹⁴	MV1024/1012/1008/1006/1004 MV2048/2040/2030/2020/2010 MV2008	Built-in Ethernet Port	Built-in Serial Port			
	DAQSTATION ¹⁴	CX2620/2610/2420/2410/2220 CX2210/2200/2020/2010/2000 CX1206/1200/1006/1000					
Eurotherm	Unit Controller ¹⁴	2500 ¹⁴	Built-in Ethernet Port		✓	✓	✓
	Regulation Meter ¹⁴	nanodac					
RKC INSTRUMENT	Regulation Meter ¹⁴	PF900/901, FB100/400/900 HA430/930, SA200/201/100 RB, SRV/SRX, H-PCP-J		Built-in Serial Port	✓	✓	✓
CHINO	Recorder ¹⁴	LE5000/5100/5200/5300 AH3000/AL3000 KR5100/5200/5300 KR2000/3000/BR1000		Built-in Serial Port	✓	✓	✓
	Regulation Meter ¹⁴	LT230/300/350/370/400/830 DP1000G/3000G, DB1000 DB2000, KP1000/2000/3000					
PANASONIC	Regulation Meter ¹⁴	KT2/4(H/B), KT7/8/9		Built-in Serial Port	✓	✓	✓
	Eco Power Meter ¹⁴	KW1M(-H/R), KW2G(-H) KW4M, KW7M, KW8M, KW9M		Built-in Serial Port	✓	✓	✓
HIOKI	2300 ¹⁴	2300	2301/2302/2303/2304 2305/2332/2341/2342 2343/2353		✓	✓	✓
MITSUBISHI	Energy Saving Data Collecting Servers	EcoServer III	Built-in Ethernet Port		✓	-	-
	Demand Monitoring Equipment	E-Energy					
	Energy Monitoring Unit ¹⁴	EcoMonitorLight		Built-in Serial Port	✓	✓	✓
	Indicating Instrument ¹⁴	New-S, Super-S, S					
	Smart Meter ¹⁴	M5CM					
MOXA	Switching Hub ¹⁴	EDS-828/728, EDS-518/516(A) EDS-P510A/506, EDS-G509/500 EDS-508/505/408/405A	Built-in Ethernet Port		✓	✓	✓
UNITEC	BACnet Unit for MELSEC	(MELSEC-Q series CPU)	BAQ08V		✓	-	-
	BACnet Unit for LonWorks	(LonWorks unit)	BL750				
	BACnet Unit for Multi-Connection	(MELSEC/SYMAC/Modbus)	BP750-PM				
GRAPHTEC	Data logging device ¹⁴	GLT400 Series	Built-in Ethernet Port		✓	✓	✓

Database

Vender	Database name	Available version	ODBC driver name	EP	AD	ST
Microsoft	Microsoft SQL Server	Microsoft SQL Server 2012 Microsoft SQL Server 2008(R2) Microsoft SQL Server 2005	SQL Server SQL Server Native Client			
	Microsoft Access	Microsoft Access 2013 Microsoft Access 2010 Microsoft Access 2007 Microsoft Access 2003	Microsoft Access Driver	✓	-	-
ORACLE	Oracle Database	Oracle Database 11g Oracle Database 10g	Oracle in OraClient11g_home1 Oracle in OraClient10g_home1			
(Open)	MySQL	MySQL 5.6	MySQL Connector/ODBC			
Other	ODBC Data Source					



(Available Edition)
 EP: Enterprise
 AD: Advanced
 ST: Standard

OPC Interface

Interface	Vender	Product name	EP	AD	ST
OPC UA Client	TAKEBISHI	DeviceXPlorer OPC Server DeviceGateway FileArk FA Edition			
	mitsubishi	MELSEC iQ-R/iQ-F series OPC UA server unit MELSOFT MX OPC Server			
	OMRON	SYSMAC NJ/NX controllers			
	AZBIL	ePREXION Harmonas-DEO System			
	Toshiba Infrastructure Systems & Solutions	TOSHIBA OPC UA server			
	YOKOGAWA	FAST/TOOLS UA Server for CENTUM	✓	-	-
	PUERTO	PUERTO UA Monitor			
	AVEVA	InduSoft Web Studio			
	Kepware	KEPServerEX			
	SIEMENS	SIMATIC S7-1200/S7-1500 controllers SIMATIC RF600			
	Softing	dataFEED OPC Suite			
	Beckhoff	TwinCAT OPC UA Server			
Other	Third party OPC UA server (OPC UA 1.03)				
OPC UA Pub/Sub *17	Other	Third party OPC UA Pub/Sub software	✓	-	-
OPC DA Client	TAKEBISHI	DeviceXPlorer OPC Server			
	MITSUBISHI	MELSOFT MX OPC Server	✓	✓	✓
	Toshiba Infrastructure Systems & Solutions	Centralized monitoring system BUILDAC series			
	Other	Third party OPC DA Server (OPC DA 2.05A / 3.0)			

Open Standard Communication

Interface	Series	Communication protocol	EP	AD	ST
Modbus client(master)	Modbus server(slave) device	Modbus/TCP (Ethernet) Modbus/ASCII (Serial) Modbus/RTU (Serial)	✓	✓	✓
Modbus server(slave)	Modbus client(master) device	Modbus/TCP (Ethernet)	✓	-	-
EtherNet/IP	EtherNet/IP Adapter device	EtherNet/IP (Ethernet)	✓	-	-
BACnet/IP	BACnet/IP Slave device	ANSI/ASHRAE Standard 135-2012 / IEC60870-5-104 (Ethernet)	✓	-	-
IEC60870-5	IEC60870-5-104 Slave device	IEC60870-5-104 (Ethernet)	✓	-	-
IEC61850 MMS	IEC61850 MMS Server device	IEC61850 MMS (Ethernet)	✓	-	-
DNP3	DNP3 out station device	DNP3 (Ethernet)	✓	-	-
SLMP	SLMP Slave device	SLMP (Ethernet)	✓	✓	✓
MTCConnect	MTCConnect device	MTCConnect (HTTP)	✓	-	-

Other

Interface	Vender	Product name	EP	AD	ST
DDE Client	Other	Third party DDE Server	✓	-	-
DxpLink Client	TAKEBISHI	DeviceXPlorer OPC Server			
Shared Memory	Other	Memory Mapped File	✓	✓	✓

- *1 SYSMAC Gateway and CX-Compolet runtime license is required for CX-Compolet connections.
- *2 Required for connections other than Ethernet or serial communication. (Peripheral / USB port communication)
- *3 JTEKT communication library is required in TOYOPUC Built-in CPU Port connection.
- *4 Use "Modbus Connection".
- *5 Use "Modbus Connection" to connect with Panasonic FP series via serial communication.
- *6 Use "EtherNet/IP Connection".
- *7 FANUC "FOCAS1" or "FOCAS2" is required.
- *8 It can access PLC registers as Q4ACPU when using "EZSocket connection"
- *9 Not to access directly when using "EZSocket connection". Access through shared memory of iQ platform (multiple CPU system).
- *10 Please contact us about communication with NCs older than M5.
Also "EZSocketNc Communication" and "DPRNT Communication" is only available for Enterprise Edition.
- *11 Please contact Shibaura Machine about connectivity.
- *12 Please contact Shibaura Machine about connectivity because T-PX200 does not carry RS-232C interface.
- *13 Use "BACnet Connection".
- *14 A base unit (2500B) is required for 2500 series.
- *15 Use "Modbus/TCP Server Connection"
- *16 The Japan Steel Works "NET100 Server" is required.
- *17 Contact us if you want to use.
- *18 Support OS for MELSEC interface board connection depends on MELSEC interface board supporting OS.

Specification

Item	Description	
OS	Windows 11(21H2) Windows 10 IoT Enterprise 2019 LTSC, Windows 10 IoT Enterprise 2016 LTSB, Windows 10(1809, 1903, 1909, 2004, 20H2, 21H2) ^{*1} Windows 8.1, Windows 7, Windows Server 2022 / 2019 / 2016 / 2012(R2) / 2008 R2	
Application Type ^{*2}	32bit Application (Win32/x86), 64bit Application (Win64/x64)	
Hard Disk	1GB or more	
Memory	1GB or more	
Framework	.NET Framework 3.5 (32bit application only)	
License	Require a license for each computer to install. (There are no limitation for OPC Client connection)	
Protection	Protected by software key or USB key	
Windows Service Activation	Available	
Maximum PLCs ^{*3}	255	
Maximum Tags	Unlimited	
Support Interface	OPC UA1.04 ^{*4} , OPC DA3.0/2.05A, OPC AE1.10, SuiteLink ^{*5} , DxpLink, Modbus/TCP Server	
Simulation Mode	Available (Random / Increment / Sin / Fixed Value)	
OPC UA Interface	Server Profile	Standard UA Server Profile
	Endpoint URL	opc.tcp://<IP address or Machine name>:52240
	Security Type	None, SignAndEncrypt, Sign
	Security Policy	None, Basic128Rsa15, Basic256, Basic256Sha256, Aes128Sha256RsaOaep, Aes256Sha256RsaPss
	Authentication	Anonymous, User name/password, X509 Certificate
OPC UA Pub/Sub Interface ^{*6}	Transport Profile	http://opcfoundation.org/UA-Profile/Transport/pubsub-udp-uadp
OPC DA Interface	Type	Server/Client
	PROG.ID ^{*7}	Takebishi.Dxp.6
	OPC Access Path	Enable
	OPC Item ID	Use delimiters to specify device, group and tag names.
SuiteLink ^{*5}	Application Name	Any (Default:"DXPV6")
	Topic Name	Any (Default:"Device1")

Attention! Lineup & product type changes from previous products(Ver.4, Ver.5).

Lineup

Providing the product lineup that meets system requirements.
Select from Enterprise / Advanced / Standard Edition.

Edition	Accessible Suite	Script	OPC UA Server Interface	Modbus/TCP Server Interface
Enterprise ^{*8}	All	Unlimited	Supported	Supported
NEW Advanced ^{*9}	One Suite	1 Sec cycle / 1 Script	Supported	N/A
Standard ^{*9-10}	One Suite	1 Sec cycle / 1 Script	N/A	N/A

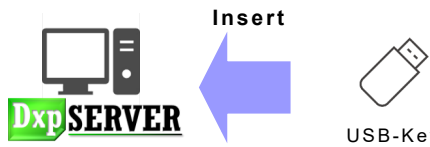



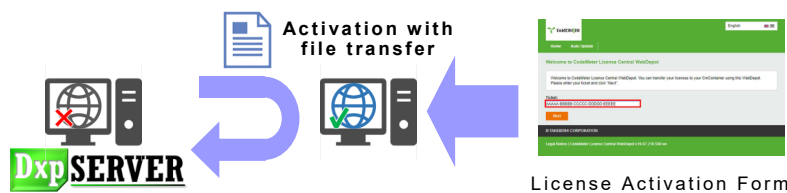
Advanced Edition is that OPC UA server interface added in standard edition.

Product Type

Select package version (software key or hardware key) or download version. ^{*11}

Product Type	Providing	License Activation
Package (Hardware Key)	Send CD-R media and USB key	Attach USB key to PC
Package (Software Key)	Send CD-R media	Required via the Web page
Download	Send download URL via e-mail (No CD-R media)	

License Activation Flow

Product Type	Activation Flow	
Package (Hardware Key)	Insert a Hardware Key and use. 	
Package (Software Key) or Download	Perform user registration and get an ID. 	the PC with DxpSERVER installed can connect to the Internet Activate using online PC, and use.  <p style="text-align: center;">* Necessary to be performed only during initial installation</p>
	User 	the PC with DxpSERVER installed cannot connect to the Internet Activate using two PCs (online PC and offline PC), and use.  <p style="text-align: center;">* Necessary to be performed only during initial installation</p>

» » See [YouTube "TAKEBISHI FAWEB" channel](#) for detailed license activation procedure.



« «

- *1 In Windows10 Home Edition, Windows Update type is fixed "Current Branch"(update is performed automatically), so Pro Edition or above is recommended.
- *2 Following connection types are not available on 64-bit application. Use 32-bit application.
 - MELSEC EZSocket/GOT Connection
 - SYSMAC FinsGateway/SysmacGateway/CX-Compolet Connection
 - TOYOPUC Communication DLL Connection
 - FANUC FOCAS Connection
 - Yaskawa Robot Connection
 - Mitsubishi CNC EZSocketNc Connection
- *3 Communication performance will be down as increasing PLCs. Recommends distributing OPC Server for every 10-20 connections.
- *4 OPC UA interface are available in only Enterprise / Advanced Edition. OPC UA interface doesn't support information model.
- *5 SuiteLink interface is not available on 64-bit application. Use 32-bit application.
- *6 Contact us if you wish to use this service.
- *7 Ver.6 and previous products (Ver.5 and Ver.4) can work on same machine.
- *8 Enterprise edition can be accompanied by 3 or 5 years of software maintenance services.
A free update service is available that allows you to do upgrades including major upgrades as many times as you like during the contract period. Note that you can not change or extend the maintenance period.
- *9 If you purchase the Advanced or Standard Edition, you can select and communicate with one of the following suites after installation. The model is the same, regardless of the communication suite.

Selectable communication suite:

Suite		
Mitsubishi MELSEC iQ-R/Q/L/FX/QnA/A Series	OMRON SYSMAC-NJ/CJ/CS/CP/CV/C Series ^{*12}	JTEKT TOYOPUC-PC10/PC3J/PC2J Series ^{*13}
YOKOGAWA FA-M3 Series	HITACHI EH/H Series	SHARP SATELLITE JW Series
FUJI MICREX-SX/F Series	PANASONIC FP-X/FP7/FP2 Series	YASKAWA MP Series (MEMOBUS)
LSIS XGT Series	YASKAWA Robot simulator	KEYENCE KV Series
ROCKWELL AB Logix Series (EtherNet/IP)	SIEMENS SIMATIC-S7 Series	AZBIL (YAMATAKE) CPL protocol
Modbus/TCP,RTU,ASCII client(master)	FANUC PMC Series ^{*14}	KAWASAKI Robot controller
OPC DA2.05A/3.0 Client function		

- *10 Unlike the old products (Ver.5, Ver.4), there is only one model for standard edition, so the model of standard edition does not differ depending on the communication suite.
- *11 The product type cannot be changed when version up. Only when new purchase, or upgrade from previous products (Ver.5 or earlier), product type can be selected. Please refer to the model number on P.20 when ordering.
- *12 When communicates with SYSMAC, "FinsGateway/SysmacGateway/CX-Compolet" from OMRON may be required depend on communication type.
- *13 When communicates with TOYOPUC via CPU built-in serial port, "communication library" from JTEKT is required.
- *14 When communicates with FANUC PMC, "FOCAS1/2" from FANUC may be required depend on communication type.

How to read model code

DXPV6 **A - B - C - D**

A	Edition	EP : Enterprise AD : Advanced ST : Standard
B	Product Type	HW : Package(Hardware Key) SW : Package(Software Key) DL : Download
C	Maintenance / Upgrade / Additional	Unspecified : Normal product M3 : With maintenance for 3 years (Enterprise Edition only) M5 : With maintenance for 5 years (Enterprise Edition only) V : Version Upgrade CHG : Enhanced upgrade A10 : Additional 10 licenses A50 : Additional 50 licenses
D	Language	J : Japanese E : English

Price List

Enterprise Edition

Product	Product type	Model *1	Remarks
DxpSERVER V6 Enterprise OPC Server	Package (hardware key)	DXPV6EP-HW-E	Support All Controller Equipped with OPC UA server function
	Package (software key)	DXPV6EP-SW-E	
	Download	DXPV6EP-DL-E	
DxpSERVER V6 Enterprise OPC Server with maintenance for 3 years	Package (hardware key)	DXPV6EP-HW-M3-E	Free update service
	Package (software key)	DXPV6EP-SW-M3-E	
	Download	DXPV6EP-DL-M3-E	
DxpSERVER V6 Enterprise OPC Server with maintenance for 5 years	Package (hardware key)	DXPV6EP-HW-M5-E	Free update service
	Package (software key)	DXPV6EP-SW-M5-E	
	Download	DXPV6EP-DL-M5-E	
DxpSERVER V6 Enterprise OPC Server Additional 10 Licenses *2	Package (hardware key)	DXPV6EP-HW-A10-E	10 license (no media)
	Package (software key)	DXPV6EP-SW-A10-E	
	Download	DXPV6EP-DL-A10-E	
DxpSERVER V6 Enterprise OPC Server Additional 50 Licenses *2	Package (hardware key)	DXPV6EP-HW-A50-E	50 license (no media)
	Package (software key)	DXPV6EP-SW-A50-E	
	Download	DXPV6EP-DL-A50-E	
DxpSERVER V6 Enterprise OPC Server Version upgrade *3	Package (hardware key)	DXPV6EP-HW-V-E	Upgrade to the latest version
	Package (software key)	DXPV6EP-SW-V-E	
	Download	DXPV6EP-DL-V-E	
DxpSERVER V6 Enterprise OPC Server Enhanced Upgrade	Package (hardware key)	DXPV6EP-HW-CHG-E	Upgrade to Enterprise Edition from Advanced or Standard Edition.
	Package (software key)	DXPV6EP-SW-CHG-E	
	Download	DXPV6EP-DL-CHG-E	

Advanced Edition

Product	Product type	Model *1	Remarks
DxpSERVER V6 Advanced OPC Server	Package (hardware key)	DXPV6AD-HW-E	Support 1 Controller Equipped with OPC UA server function
	Package (software key)	DXPV6AD-SW-E	
	Download	DXPV6AD-DL-E	
DxpSERVER V6 Advanced OPC Server Additional 10 Licenses *2	Package (hardware key)	DXPV6AD-HW-A10-E	10 license (no media)
	Package (software key)	DXPV6AD-SW-A10-E	
	Download	DXPV6AD-DL-A10-E	
DxpSERVER V6 Advanced OPC Server Additional 50 Licenses *2	Package (hardware key)	DXPV6AD-HW-A50-E	50 license (no media)
	Package (software key)	DXPV6AD-SW-A50-E	
	Download	DXPV6AD-DL-A50-E	
DxpSERVER V6 Advanced OPC Server Version Upgrade *3	Package (hardware key)	DXPV6AD-HW-V-E	Upgrade to the latest version
	Package (software key)	DXPV6AD-SW-V-E	
	Download	DXPV6AD-DL-V-E	

Standard Edition

Product	Product type	Model *1	Remarks
DxpSERVER V6 Standard OPC Server	Package (hardware key)	DXPV6ST-HW-E	Support 1 Controller
	Package (software key)	DXPV6ST-SW-E	
	Download	DXPV6ST-DL-E	
DxpSERVER V6 Standard OPC Server Additional 10 Licenses *2	Package (hardware key)	DXPV6ST-HW-A10-E	10 license (no media)
	Package (software key)	DXPV6ST-SW-A10-E	
	Download	DXPV6ST-DL-A10-E	
DxpSERVER V6 Standard OPC Server Additional 50 Licenses *2	Package (hardware key)	DXPV6ST-HW-A50-E	50 license (no media)
	Package (software key)	DXPV6ST-SW-A50-E	
	Download	DXPV6ST-DL-A50-E	
DxpSERVER V6 Standard OPC Server Version Upgrade *3	Package (hardware key)	DXPV6ST-HW-V-E	Upgrade to the latest version
	Package (software key)	DXPV6ST-SW-V-E	
	Download	DXPV6ST-DL-V-E	

*1 English version or Japanese version are selectable. If you'd like to order Japanese edition, append "-J" instead of "-E" behind the model name.
 *2 You can add Free upgrade service for 3 or 5 years to Enterprise Edition only.
 - Free upgrade service : You can get free upgrade service as many times as needed, including major version upgrade.
 Please note that the maintenance period for the first purchase cannot be changed or extended.
 *3 License sheet only provided. If you need installation media itself, please purchase normal license.
 *4 Please order version upgrade product(DXPV6 ■-■-V-E) in the case of upgrading from old major version such as Ver.4 and Ver.5.

TAKEBISHI CORPORATION 29, Mamedacho, Nishikyogoku, Ukyo-ku, Kyoto, 615-8501, Japan

Support Desk Available: Weekday 9:00-17:00 (Japan local)

InquiryForm : <https://www.faweb.net/support/form/>
 MAIL : fa-support@takebishi.co.jp
 TEL : +81-75-325-2261
 Movie : YouTube "Takebishi FAWEB" channel

