

EN - For pricing and availability in your local country please visit one of the below links:

DE - Informationen zu Preisen und Verfügbarkeit in Ihrem Land erhalten Sie über die unten aufgeführten Links:

FR - Pour connaître les tarifs et la disponibilité dans votre pays, cliquez sur l'un des liens suivants:

[CABSHELF-EL450](#)

[CABSHELF-EL550](#)

EN

This Datasheet is presented by
the manufacturer

DE

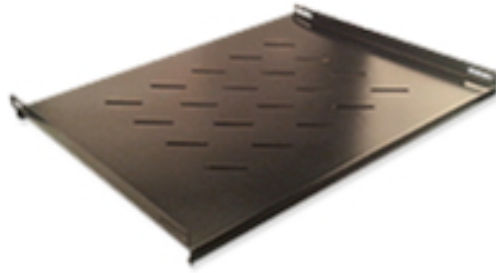
Dieses Datenblatt wird vom
Hersteller bereitgestellt

FR

Cette fiche technique est
présentée par le fabricant

EcoNetCab Shelving

Standard 19-inch wide
vented shelving



Wall Enclosures



Floor-standing
Enclosures



Server
Enclosures

Optimally designed shelving for the your data enclosures.

LMS Data produces a range of EcoNetCab and general accessories, made to the highest standards with assured fitment in all standard ETSI 19-inch width standard enclosures.

The new **CABSHELF-FE** range of fixed shelves offer a stable and strong base for all your non rack-mountable products such as Routers, Multiplexors, UPS, pedestal computers and Monitors. Securely fitted to your required location via a built-in slotted design, meaning you can now accurately align the shelf within your cabinet, be it wall, floor-standing telecom or server design cabinet.

All **CABSHELF-FE** shelves feature an improved 'vented' design to allow better airflow around any mounted active equipment and are finished in a robust, power-coated paint application.

specifications:

Standard ETSI, 19-inch wide fixed shelving

Slotted design for precise cabinet and enclosure deployment

Improved vented design - encourages better airflow

Robust design with up to 50kg weight support*

Powder-coated design

Available in the following depths:-

Floor and Server Enclosures

CABSHELF-FE-600 (actual depth is 305mm)

CABSHELF-FE-800 (actual depth is 500mm)

CABSHELF-FE -1000 (actual depth is 700mm)

Wall Enclosures

CABSHELF-EL-450

CABSHELF-EL-550

Eco
NetCab

CE FC

* actual weight maybe dependent on fixing and enclosure specifications



Copyright 2013 LMS Data Group
All trademarks acknowledged E&OE.
Details subject to change



element14

EN - For pricing and availability in your local country please visit one of the below links:

DE - Informationen zu Preisen und Verfügbarkeit in Ihrem Land erhalten Sie über die unten aufgeführten Links:

FR - Pour connaître les tarifs et la disponibilité dans votre pays, cliquez sur l'un des liens suivants:

[CABSHELF-EL450](#)

[CABSHELF-EL550](#)

EN

This Datasheet is presented by
the manufacturer

DE

Dieses Datenblatt wird vom
Hersteller bereitgestellt

FR

Cette fiche technique est
présentée par le fabricant