



Power up Your Small Network with Gigabit Speeds

The NETGEAR® family of Gigabit Smart Switches is purposely designed for SMB customers with high performance, SMB-oriented features and easy management. With 8 10/100/1000 Mbps ports, each capable of powering 2000 Mbps of data throughput in full-duplex mode per port, the GS108T is an ideal solution for extending network connections into conference room, labs, lobbies and department workgroups. It enables SMB networks to support Voice over IP (VoIP), streaming media, multicasting, security, and many other bandwidth-intensive applications like ERP and large file transfers.

The GS108T comes with a comprehensive set of L2 features, such as access control lists (ACL), 802.1x port authentication (MD5), enhanced QoS, rate limiting and IGMP snooping among others to provide a small or medium-sized business with a network that is geared for growth while ensuring performance and reliability.

In addition, the Port 1 of GS108T is a PD port. It can not only obtain its power from an external AC power adapter as any other switch does, but also from a PoE source to pass the power through. This gives an SMB flexibility when installing the switch in places where a power outlet is not present.

The GS108T comes with both an intuitive Web-browser GUI interface and Smart Control Center (Windows PC required), which offer simple Smart Switch management, making it a snap to monitor switch performance, configure ports, even set up port trunks, VLANs, and traffic prioritization. Alternatively, you can use SNMP-based software to manage your Smart Switch. NETGEAR Smart Switches are ideal for adding basic management to your unmanaged networks or extending your managed networks.

Highlights

Intelligent

- The GS108T provides cost-efficient solutions that enable SMB customers to better manage their network. Included are performance monitoring, port configuration, VLAN for traffic control, link aggregation for increased bandwidth, IGMP snooping for facilitating multicast applications, and Class of Service (CoS) for traffic prioritization.



Ideal Advanced Security

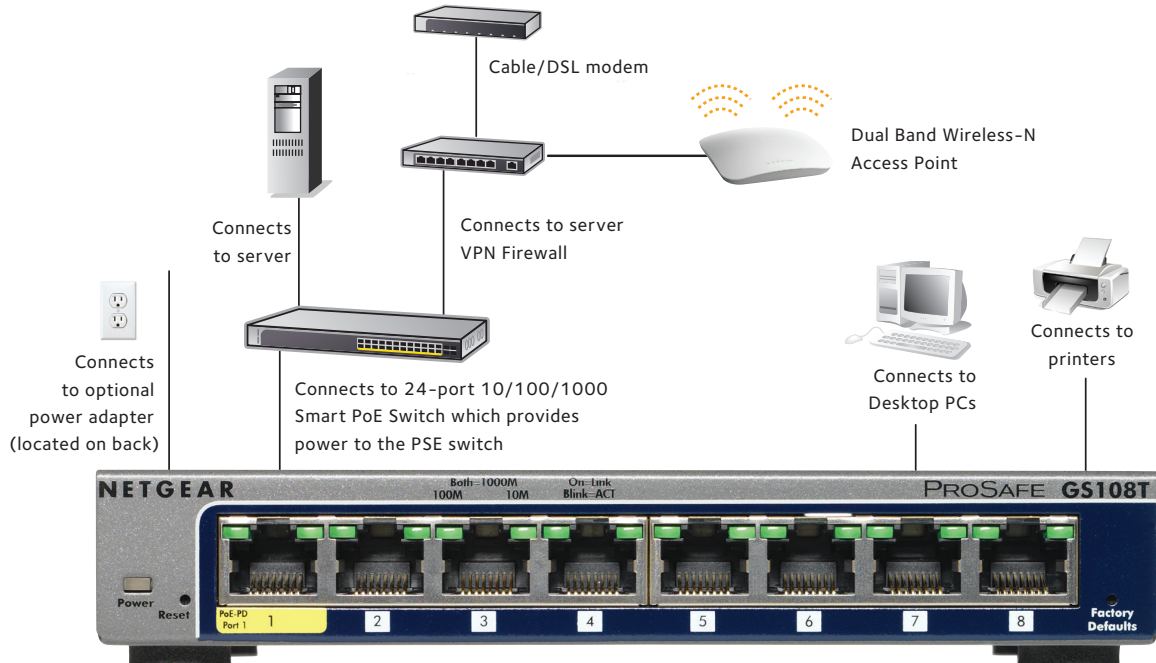
- These Gigabit Smart Switches have advanced features that provide more robust security to SMBs. These include: 802.1x for authentication (MD5), ACL filtering to permit or deny traffic based on MAC or IP addresses single pane-of-glass view

Advanced Quality of Service

- Priority queuing ensures that high-priority traffic gets delivered efficiently, even during congestion from high-traffic bursts. Companies

implementing network telephony or video conferencing, for example, need to be able to prioritize such voice and video traffic and other real-time applications over less latency-sensitive traffic to ensure reliability and quality. The ability to prioritize traffic ensures quality of latency-sensitive services and applications despite increasing traffic loads. The Gigabit Smart Switch provides an extensive set of QoS features: 802.1p-based prioritization, Layer 3-based prioritization, Rate limiting

Example Application



Network Protocol and Standards Compatibility		GS108Tv2
IEEE 802.3i 10BASE-T		Yes
IEEE 802.3u 100BASE-TX		Yes
IEEE 802.3ab 1000BASE-T		Yes
IEEE 802.3x full-duplex flow control		Yes
Power Supply		
Power consumption: 6W maximum		Yes
Network Ports		
8 10/100/1000Mbps auto sensing Gigabit Ethernet		Yes
Physical Specifications		
Dimensions (W x D x H)	158 x 105 x 27mm (6.2 x 4.1 x 1.1in)	
Weight	0.56kg (1.23 lb)	
Performance Specifications		
Forwarding modes	Store-and-forward	
Bandwidth	16Gbps full duplex	
Network latency	Less than 15µs for 64-byte frames in store-and-forward mode for 1000 Mbps to 1000 Mbps transmission	
Buffer memory	512KB embedded memory per unit	
Address database size	4k media access control (MAC) addresses per system	
Mean time between failures (MTBF)	275,533 hours (~32 years)	
Acoustic noise	0dB	
Electromagnetic Emissions		
	CE mark, commercial	
	FCC Part 15 Class B	
	VCCI Class B	
	C-Tick	
Environmental Specifications		
Operating Temperature	Switch: 32° to 122°F (0° to 50°C) Adapter: 32° to 104°F (0° to 40°C)	
Storage Temperature	-4° to 158°F (-20° to 70°C)	
Operating Humidity	90% maximum relative humidity, non-condensing	
Storage humidity	95% maximum relative humidity, non-condensing	
Operating altitude	10,000ft (3,000m) maximum	
Storage altitude	10,000ft (3,000m) maximum	
Status LEDs		
Per port	Link/activity, speed	
Per device	Power	
Power Adapter		
	12V, 1.0A power adapter, localized to country of sale Alternatively, unit can be powered by IEEE 802.3af PSE via Ethernet port ¹	

Electromagnetic Immunity	GS108Tv2
	EN 55024
Safety	CE mark, commercial cUL IEC 950/EN 60950 CB
Administrative Switch Management	
IEEE 802.1Q Static VLAN (64 groups, Static)	Yes
Protected ports	Yes
IEEE 802.1p Class of Service (CoS)	Yes
Port-based QoS	Yes
DSCP-based QoS	Yes
DiffServ	Yes
IEEE 802.3ad Link Aggregation (manual or LACP)	Yes
IEEE 802.1w Rapid Spanning Tree Protocol (RSTP)	Yes
IEEE 802.1s Multiple Spanning Trees Protocol (MSTP)	Yes
IEEE 802.1ab Link Layer Discovery Protocol (LLDP)	Yes
LLDP-MED	Yes
SNMP	v1, v2c, v3
RFC 1213 MIB II	Yes
RFC 1643 Ethernet Interface MIB	Yes
RFC 1493 Bridge MIB	Yes
RMON group	1, 2, 3, 9
Auto voice VLAN	Yes
DHCP Filtering	Yes
Auto denial-of-service (DoS) protection	Yes
HTTP and HTTPS	Yes
Ping and traceroute	Yes
Green features	Power saving by cable length (<10 m)
Power saving when link down	Yes
RFC 2131 DHCP client	Yes
DHCP filtering	Yes
IEEE 802.1x with Guest VLAN	Yes
Jumbo frame support	Yes
Port-based security by locked MAC addresses	Yes
MAC and IP-based ACL	Yes
Storm control for broadcast, multicast and unknown unicast packets	Yes
IGMP snooping v1/v2	Yes

Administrative Switch Management		GS108Tv2
Port-based egress rate limiting		Yes
SNTP		Yes
Port mirroring support (Many to one)		Yes
Web-based configuration		Yes
Configuration backup/restore		Yes
Password access control		Yes
TACACS+ and RADIUS support		Yes
Syslog		Yes
Firmware upgradeable		Yes
Warranty and Support		
Hardware Limited Warranty		Limited Lifetime*
Limited Lifetime* 24x7 Online Chat Technical Support		
90 days (24/7) Live Phone Technical Support		
Next Business Day (NBD) Hardware Replacement		
ProSUPPORT OnCall 24x7, Category S1** Service Packages		Category S1 PMBOS11 (1 yr) PMBOS31 (3 yr) PMBOS51 (5 yr)
Package Contents		
		8-port Gigabit Smart Switch (GS108Tv2)
		Power adapter
		Rubber footpads
		Wallmount kit
		Installation guide
All models		
Ordering Information		
GS108T-200NAS	North America	
GS108T-200AUS	Australia & Asia	
GS108T-200GES	Europe General	
GS108T-200UKS	United Kingdom	
GS108T-200JPS	Japan	

¹ IEEE 802.3af PoE capable devices.

*This product comes with a limited warranty that is valid only if purchased from a NETGEAR authorized reseller, and covers unmodified hardware, fans and internal power supplies - not software or external power supplies, and requires product registration at <https://www.netgear.com/business/registration> within 90 days of purchase; see <https://www.netgear.com/about/warranty> for details. Intended for indoor use only.

**The NETGEAR OnCall 24x7 contract provides unlimited phone, chat and email technical support for your networking product.

NETGEAR, the NETGEAR Logo, and ProSUPPORT are trademarks of NETGEAR, Inc. in the United States and/or other countries. Other brand names mentioned herein are for identification purposes only and may be trademarks of their respective holder(s).

NETGEAR, Inc. 350 E. Plumeria Drive, San Jose, CA 95134-1911 USA, 1-888-NETGEAR (638-4327), E-mail: info@NETGEAR.com, www.NETGEAR.com