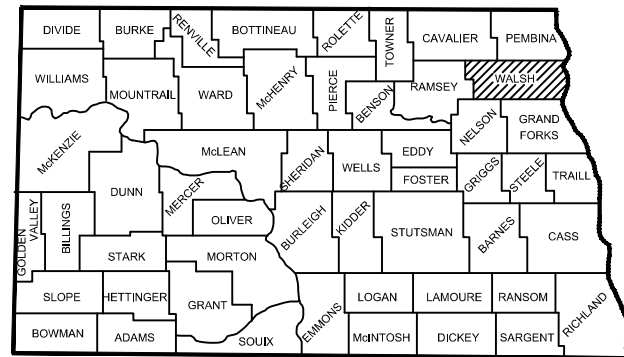


STATE	PROJECT NO.	PCN	SECTION NO.	SHEET NO.
ND	HLC-5000(014)	21320	1	1



STATE OF NORTH DAKOTA
SHOWING COUNTIES

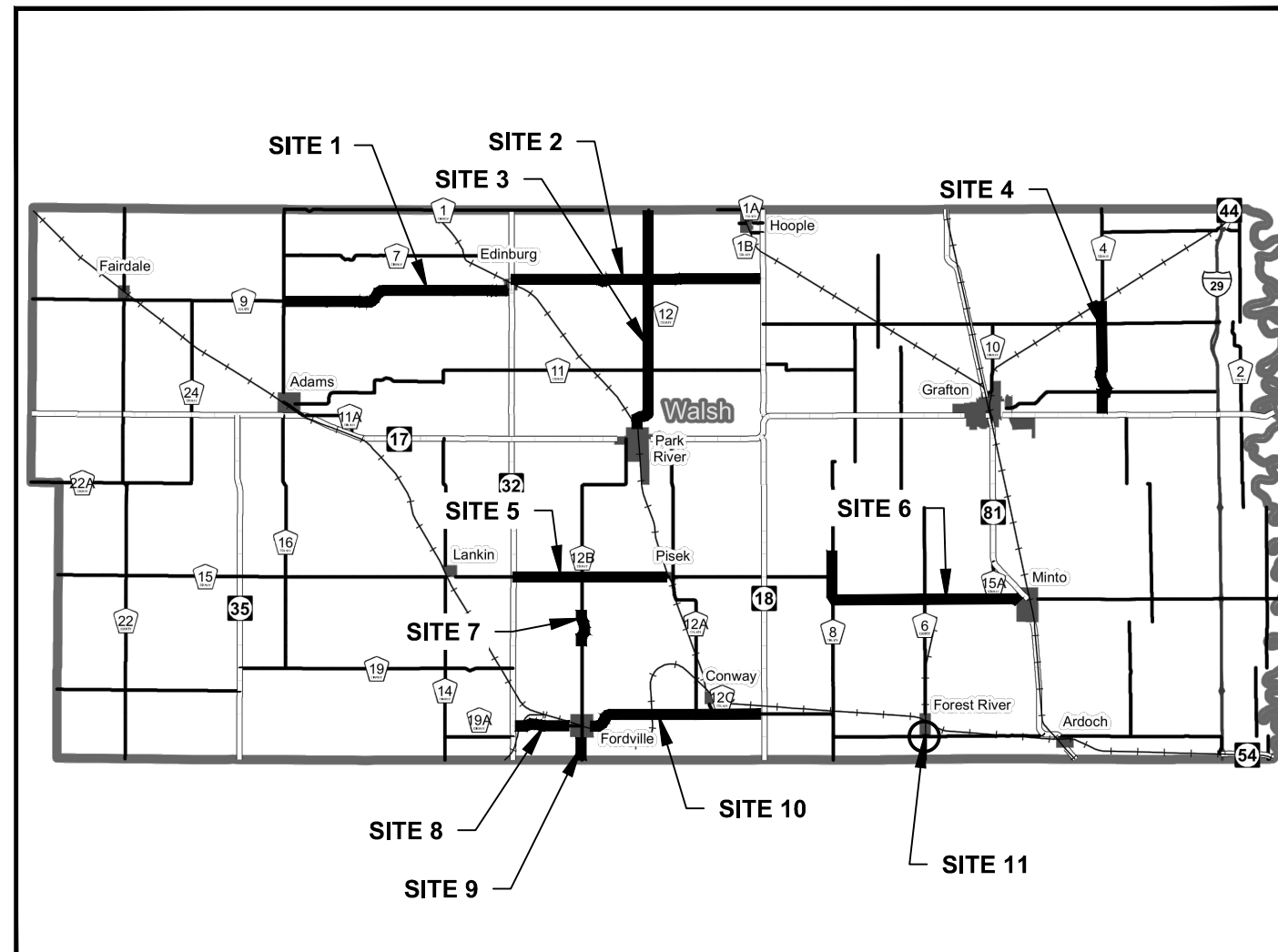
**WALSH COUNTY, NORTH DAKOTA
FEDERAL AID PROJECT
HLC-5000(014)
HIGHWAY SAFETY IMPROVEMENT PROJECT**
Project consists of Pavement Marking, Curve Signing and Incidentals.

GOVERNING SPECIFICATIONS:
2014 Standard Specifications adopted by the North Dakota Department of Transportation and the Supplemental Specifications effective on the date the project is advertised.

Project is located at 11 different sites in Walsh County.

PROJECT LENGTH

PROJECT	GROSS MILES	EXCEPTION MILES	NET MILES
Site 1	9.914	0.000	9.914
Site 2	11.039	0.000	11.039
Site 3	10.029	0.002	10.027
Site 4	4.659	0.002	4.657
Site 5	6.749	0.000	6.749
Site 6	10.533	0.000	10.533
Site 7	1.059	0.000	1.059
Site 8	2.489	0.000	2.489
Site 9	0.986	0.000	0.986
Site 10	7.880	0.002	7.878
Site 11	0.628	0.002	0.626
TOTAL	65.965	0.008	65.957



PS&E Corrections Made January 2018
Surveyed & Designed Date December 2017/January 2018

DESIGNER	<u>Jeff Daley</u>
DESIGNER	<u>Samantha Dvorak</u>
DESIGNER	<u>-</u>
DESIGNER	<u>-</u>
DESIGNER	<u>-</u>

THIS DOCUMENT WAS
ORIGINALLY ISSUED AND
SEALED BY
JEFFREY D. DALEY
REGISTRATION NUMBER
PE-7865
ON 02/02/2018 AND THE
ORIGINAL DOCUMENT IS
STORED AT THE
WALSH COUNTY HIGHWAY
DEPARTMENT.

CERTIFICATION
I HEREBY CERTIFY THAT THESE PLANS WERE PREPARED BY
ME OR UNDER MY DIRECT SUPERVISION, AND THAT I AM A
DULY REGISTERED PROFESSIONAL ENGINEER UNDER THE
LAWS OF THE STATE OF NORTH DAKOTA.

JEFFREY D. DALEY
KADRMAS, LEE & JACKSON, INC.

DATE 2/02/18 REGISTRATION NUMBER PE-7865



864 W. 12TH STREET
GRAFTON, ND 58237-0229
(701) 352-1555, FAX (855) 288-8055

TABLE OF CONTENTS

	STATE	PROJECT NO.	SECTION NO.	SHEET NO.
	ND	HLC-5000(014)	2	1

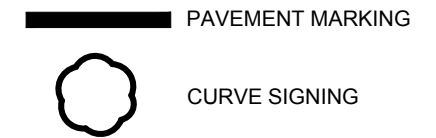
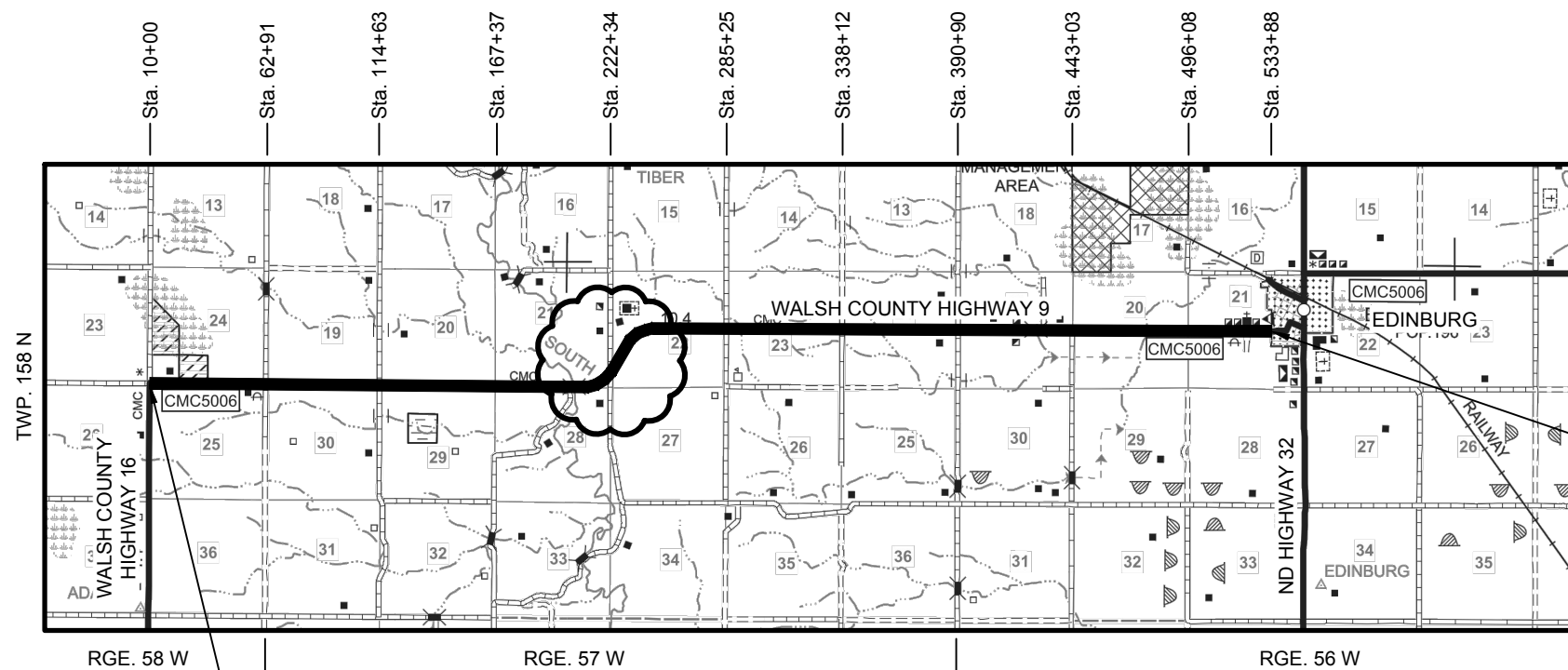
PLAN SECTIONS

Section	Page(s)	Description
1	1	Title Sheet
2	1	Table of Contents
4	1 - 5	Scope of Work
6	1	Plan Notes
8	1	Estimate of Quantities
11	1	Pavement Marking
20	1 - 8	Sign Location Details
100	1	Traffic Control Devices List
110	1 - 4	Sign Summary

LIST OF STANDARD DRAWINGS

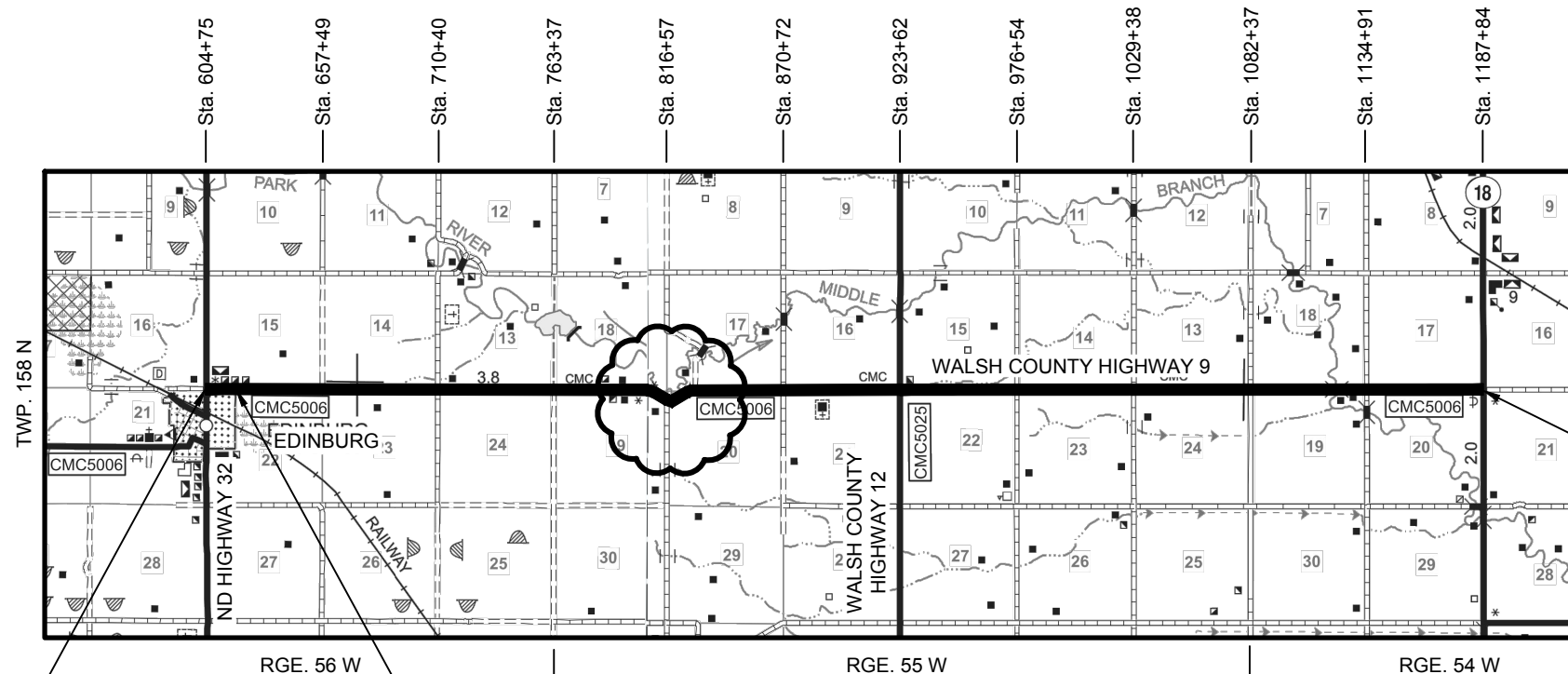
Number	Description
D-704-9	Construction Sign Details - Terminal And Guide Signs
D-704-11	Construction Sign Details - Warning Signs
D-704-13	Barricade And Channelizing Device Details
D-704-14	Construction Sign Punching And Mounting Details
D-704-24	Shoulder Closures And Bridge Painting Layouts
D-704-27	Traffic Control Plan For Moving Operations
D-704-50	Portable Sign Support Assembly
D-754-23	Perforated Tube Assembly Details
D-754-24	Mounting Details Perforated Tube
D-754-24A	Breakaway Coupler System For Perforated Tubes
D-754-25	Mounting Details Perforated Tube
D-754-26	Sign Punching, Stringer And Support Location Details Regulatory, Warning, And Guide Signs
D-754-29	Sign Punching, Stringer And Support Location Details Regulatory, Warning, And Guide Signs
D-754-37	Sign Punching, Stringer And Support Location Details Regulatory, Warning, And Guide Signs
D-754-57	Sign Punching, Stringer And Support Location Details - Route Marker Signs
D-754-79	Chevron Installation Details
D-762-1	Pavement Marking Message Details
D-762-4	Pavement Marking

	STATE	PROJECT NO.	SECTION NO.	SHEET NO.
	ND	HLC-5000(014)	4	1



END HLC-5000(014) ~ SITE 1
 STA. 533+60 = A POINT AT THE INTERSECTION OF WALSH COUNTY HIGHWAY 9 AND 5TH ST

BEGIN HLC-5000(014) ~ SITE 1
 STA. 10+12 = A POINT APPROXIMATELY 12 FEET EAST OF THE SOUTHWEST CORNER OF SEC. 24, TWP. 158 N., RGE. 58 W.



END HLC-5000(014) ~ SITE 2
 STA. 1187+72 = A POINT APPROXIMATELY 12 FEET WEST OF THE SOUTHWEST CORNER OF SEC. 16, TWP. 158 N., RGE. 54 W.

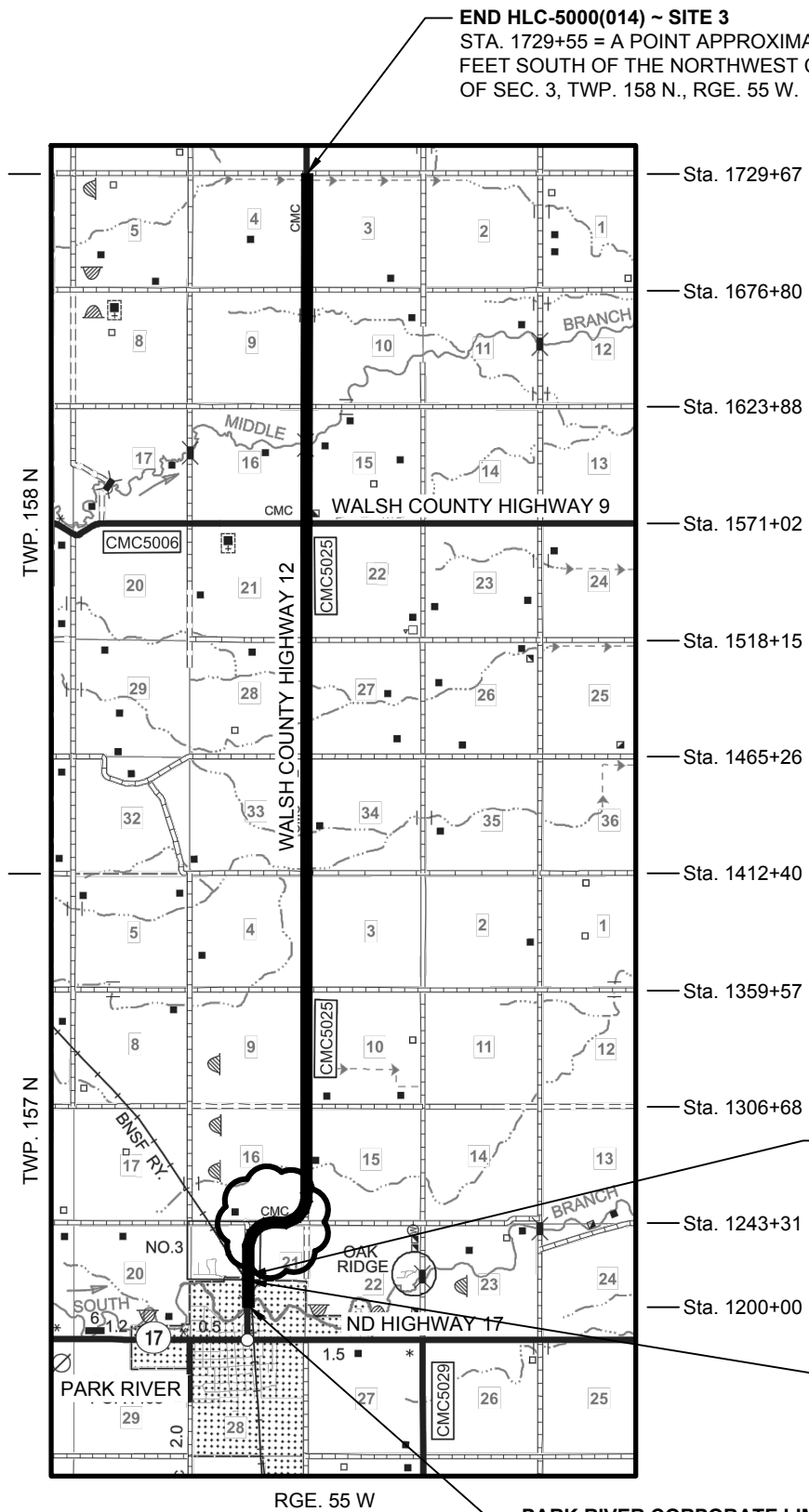
EDINBURG CORPORATE LIMITS
 STA. 617+95 = A POINT APPROXIMATELY 1,320 FEET EAST OF THE SOUTHWEST CORNER OF SEC. 15, TWP. 158 N., RGE. 56 W.

EDINBURG CORPORATE LIMITS
BEGIN HLC-5000(014) ~ SITE 2
 STA. 604+87 = A POINT APPROXIMATELY 12 FEET EAST OF THE SOUTHWEST CORNER OF SEC. 15, TWP. 158 N., RGE. 56 W.

THIS DOCUMENT WAS
 ORIGINALLY ISSUED AND
 SEALED BY
 JEFFREY D. DALEY
 REGISTRATION NUMBER
 PE-7865
 ON 02/02/2018 AND THE
 ORIGINAL DOCUMENT IS
 STORED AT THE
 WALSH COUNTY HIGHWAY
 DEPARTMENT.

HLC-5000(014) WALSH COUNTY, NORTH DAKOTA			
	SCOPE OF WORK		
	<table border="1"> <tr> <td>DRWN BY ZV</td> <td>CHKD BY JD</td> <td>PROJECT NO. 6317117</td> </tr> </table>	DRWN BY ZV	CHKD BY JD
DRWN BY ZV	CHKD BY JD	PROJECT NO. 6317117	

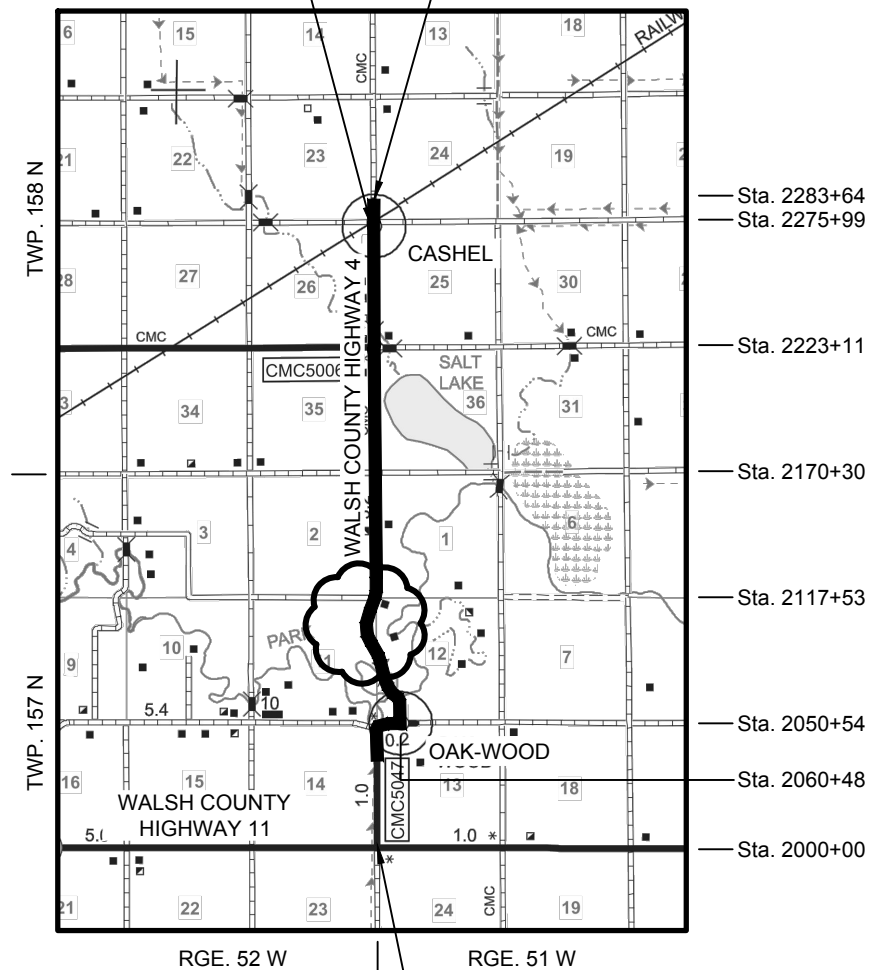
STATE	PROJECT NO.	SECTION NO.	SHEET NO.
ND	HLC-5000(014)	4	2



END HLC-5000(014) ~ SITE 3
 STA. 1729+55 = A POINT APPROXIMATELY 12 FEET SOUTH OF THE NORTHWEST CORNER OF SEC. 3, TWP. 158 N., RGE. 55 W.

EXCEPTION
 BURLINGTON NORTHERN RAILROAD
 CROSSING NO. 081893E
 STA. 2276+23 TO 2276+33 = 10 FEET

END HLC-5000(014) ~ SITE 4
 STA. 2283+64 = A POINT APPROXIMATELY 765 FEET NORTH OF THE NORTHWEST CORNER OF SEC. 24, TWP. 158 N., RGE. 51 W.





PARK RIVER CORPORATE LIMITS
 STA. 1210+68 = A POINT APPROXIMATELY 3,263 FEET SOUTH OF THE NORTH QUARTER CORNER OF SEC. 21, TWP. 157 N., RGE. 55 W.

BEGIN HLC-5000(014) ~ SITE 4
 STA. 2037+64 = A POINT APPROXIMATELY 3,764 FEET NORTH OF THE SOUTHWEST CORNER OF SEC. 13, TWP. 157 N., RGE. 51 W.


EXCEPTION
 BURLINGTON NORTHERN RAILROAD
 CROSSING NO. 080930W
 STA. 1209+97 TO 1210+07 = 10 FEET

PARK RIVER CORPORATE LIMITS
BEGIN HLC-5000(014) ~ SITE 3
 STA. 1200+00 = A POINT APPROXIMATELY 4,331 FEET SOUTH OF THE NORTH QUARTER CORNER OF SEC. 21, TWP. 157 N., RGE. 55 W.

PAVEMENT MARKING

 CURVE SIGNING


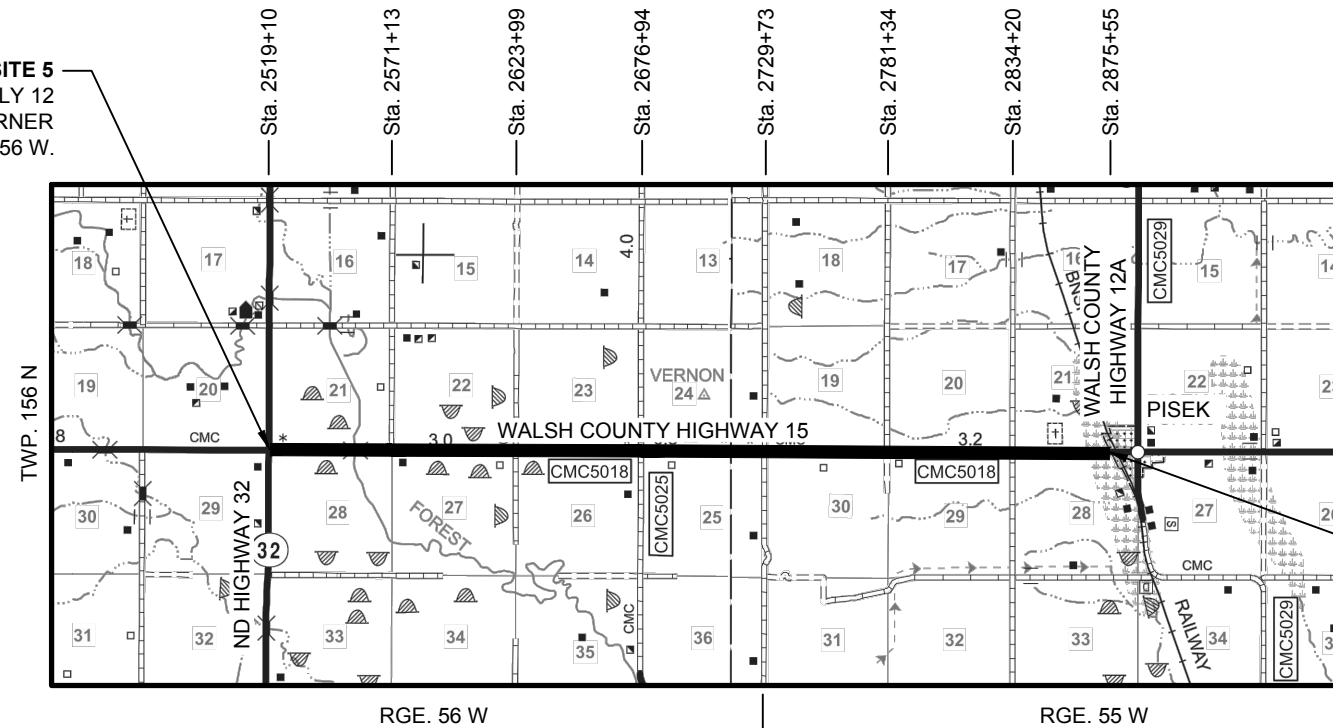


THIS DOCUMENT WAS
 ORIGINALLY ISSUED AND
 SEALED BY
 JEFFREY D. DALEY
 REGISTRATION NUMBER
 PE-7865
 ON 02/02/2018 AND THE
 ORIGINAL DOCUMENT IS
 STORED AT THE
 WALSH COUNTY HIGHWAY
 DEPARTMENT.

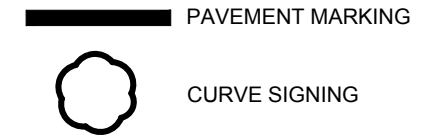
HLC-5000(014) WALSH COUNTY, NORTH DAKOTA						
	SCOPE OF WORK					
	<table border="1"> <tr> <td>DRWN. BY</td> <td>CHKD BY</td> <td>PROJECT NO.</td> </tr> <tr> <td>ZV</td> <td>JD</td> <td>6317117</td> </tr> </table>	DRWN. BY	CHKD BY	PROJECT NO.	ZV	JD
DRWN. BY	CHKD BY	PROJECT NO.				
ZV	JD	6317117				

	STATE	PROJECT NO.	SECTION NO.	SHEET NO.
	ND	HLC-5000(014)	4	3

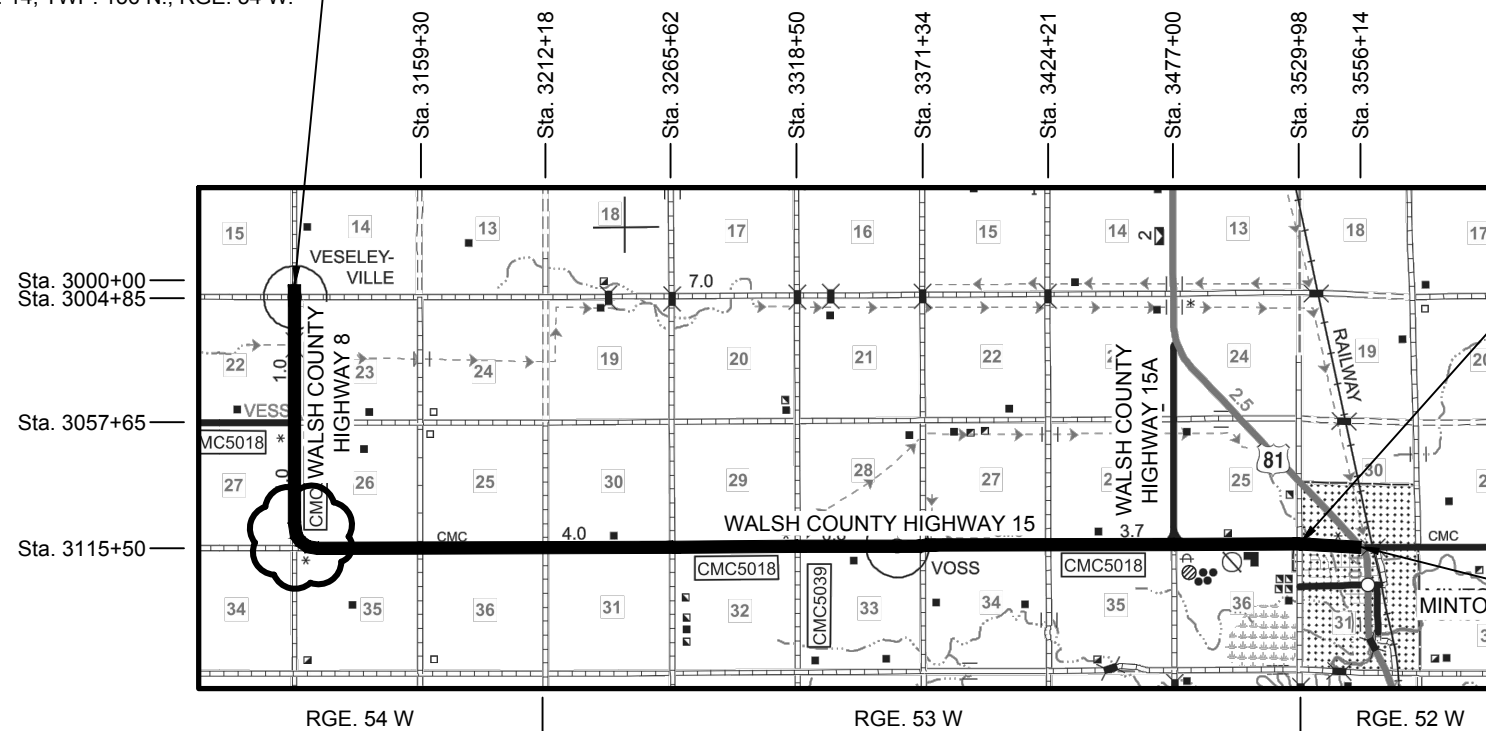
BEGIN HLC-5000(014) ~ SITE 5
 STA. 2519+22 = A POINT APPROXIMATELY 12 FEET EAST OF THE SOUTHWEST CORNER OF SEC. 21, TWP. 156 N., RGE. 56 W.



END HLC-5000(014) ~ SITE 5
 STA. 2875+55 = A POINT APPROXIMATELY 4,135 FEET EAST OF THE SOUTHWEST CORNER OF SEC. 21, TWP. 156 N., RGE. 55 W.



BEGIN HLC-5000(014) ~ SITE 6
 STA. 3000+00 = A POINT APPROXIMATELY 485 FEET NORTH OF THE SOUTHWEST CORNER OF SEC. 14, TWP. 156 N., RGE. 54 W.



MINTO CORPORATE LIMITS
 STA. 3529+98 = A POINT APPROXIMATELY AT THE SOUTHWEST CORNER OF SEC. 30, TWP. 156 N., RGE. 52 W.

MINTO CORPORATE LIMITS
END HLC-5000(014) ~ SITE 6
 STA. 3556+14 = A POINT APPROXIMATELY 2,616 FEET EAST OF THE SOUTHWEST CORNER OF SEC. 30, TWP. 156 N., RGE. 52 W.

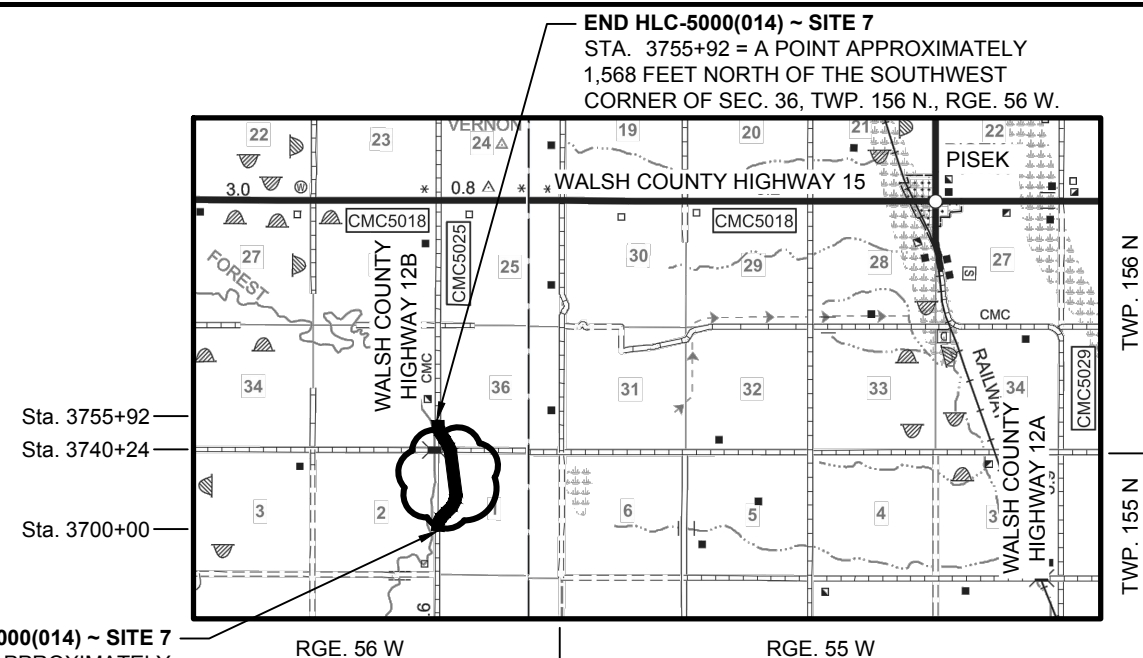


THIS DOCUMENT WAS
 ORIGINALLY ISSUED AND
 SEALED BY
 JEFFREY D. DALEY
 REGISTRATION NUMBER
 PE-7865
 ON 02/02/2018 AND THE
 ORIGINAL DOCUMENT IS
 STORED AT THE
 WALSH COUNTY HIGHWAY
 DEPARTMENT.

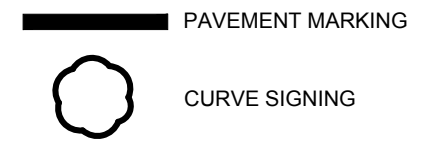
HLC-5000(014) WALSH COUNTY, NORTH DAKOTA	
SCOPE OF WORK	
DRWN BY ZV	CHKD BY JD
PROJECT NO. 6317117	



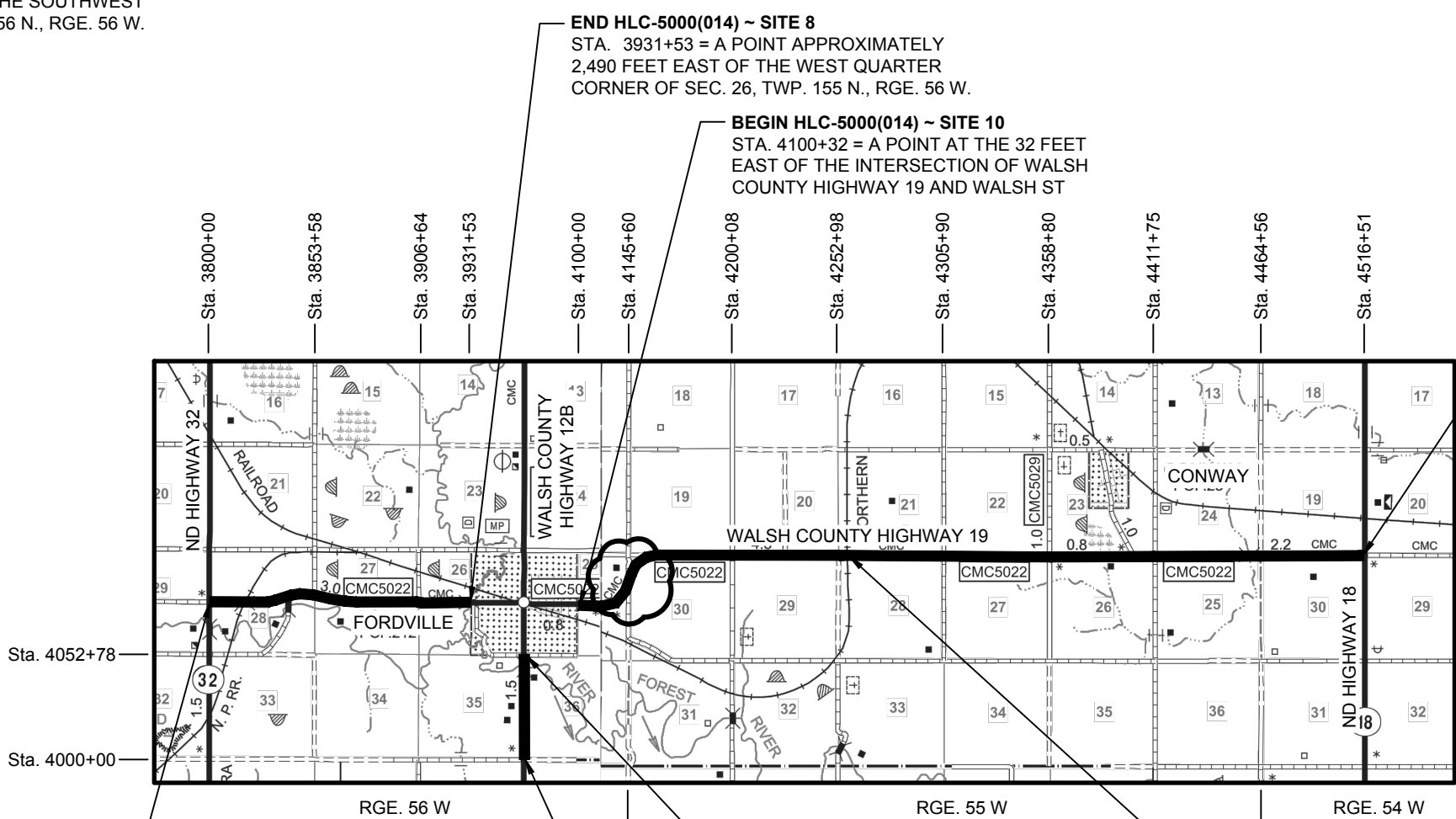
STATE	PROJECT NO.	SECTION NO.	SHEET NO.
ND	HLC-5000(014)	4	4



END HLC-5000(014) ~ SITE 7
 STA. 3755+92 = A POINT APPROXIMATELY
 1,568 FEET NORTH OF THE SOUTHWEST
 CORNER OF SEC. 36, TWP. 156 N., RGE. 56 W.



BEGIN HLC-5000(014) ~ SITE 7
 STA. 3700+00 = A POINT APPROXIMATELY
 4,024 FEET SOUTH OF THE SOUTHWEST
 CORNER OF SEC. 36, TWP. 156 N., RGE. 56 W.



END HLC-5000(014) ~ SITE 8
 STA. 3931+53 = A POINT APPROXIMATELY
 2,490 FEET EAST OF THE WEST QUARTER
 CORNER OF SEC. 26, TWP. 155 N., RGE. 56 W.

BEGIN HLC-5000(014) ~ SITE 10
 STA. 4100+32 = A POINT AT THE 32 FEET
 EAST OF THE INTERSECTION OF WALSH
 COUNTY HIGHWAY 19 AND WALSH ST

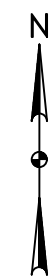
END HLC-5000(014) ~ SITE 10
 STA. 4516+39 = A POINT APPROXIMATELY 12
 FEET WEST OF THE NORTHWEST CORNER
 OF SEC. 29, TWP. 155 N., RGE. 54 W.

BEGIN HLC-5000(014) ~ SITE 8
 STA. 3800+12 = A POINT APPROXIMATELY 12
 FEET EAST OF THE WEST QUARTER
 CORNER OF SEC. 28, TWP. 155 N., RGE. 56 W.

END HLC-5000(014) ~ SITE 9
 STA. 4052+40 = A POINT APPROXIMATELY 38
 FEET SOUTH OF THE NORTHWEST CORNER
 OF SEC. 36, TWP. 155 N., RGE. 56 W.

BEGIN HLC-5000(014) ~ SITE 9
 STA. 4000+32 = A POINT APPROXIMATELY 32
 FEET NORTH OF THE SOUTHWEST CORNER
 OF SEC. 36, TWP. 155 N., RGE. 56 W.

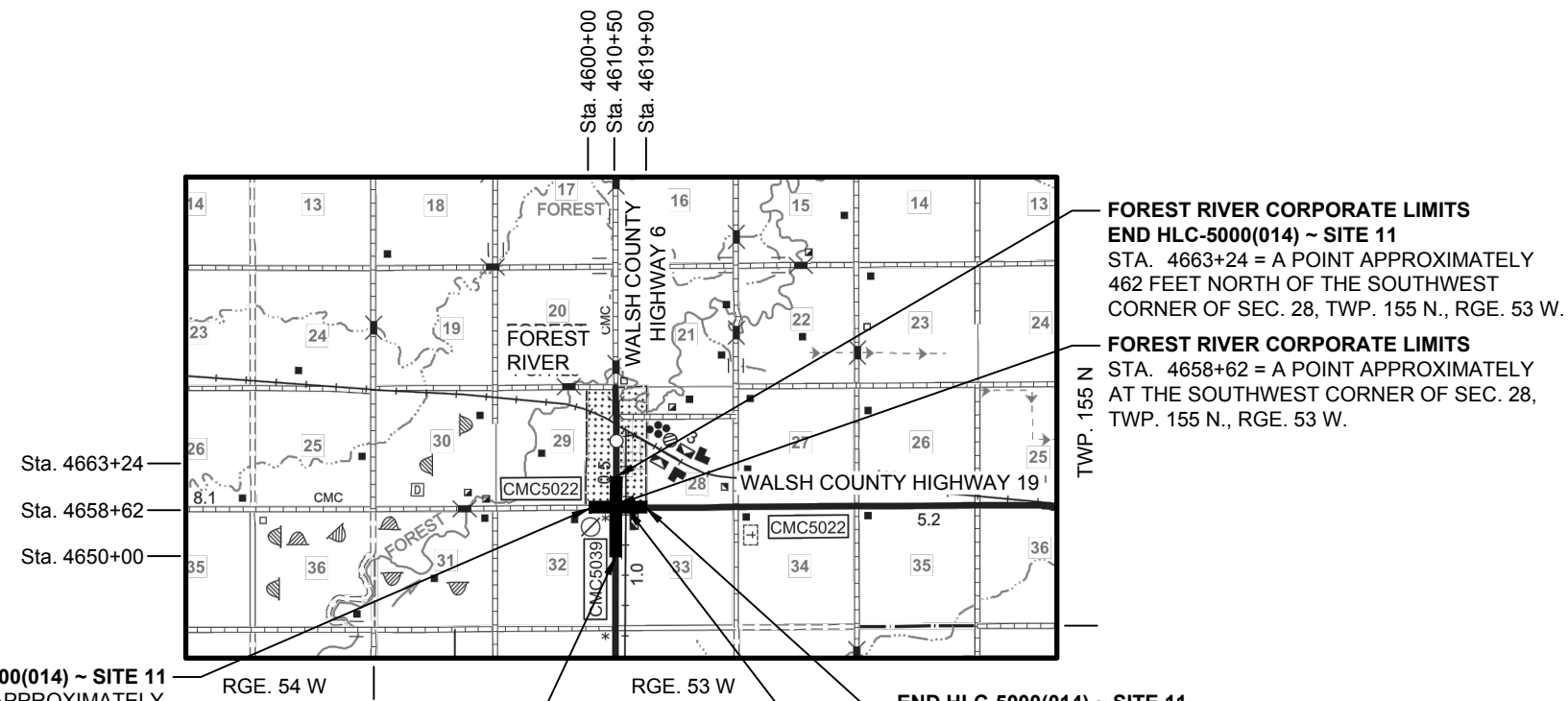
EXCEPTION
 NORTHERN PLAINS RAILROAD
 CROSSING NO. 695902Y
 STA. 4257+12 TO 4257+22 = 10 FEET



THIS DOCUMENT WAS
 ORIGINALLY ISSUED AND
 SEALED BY
 JEFFREY D. DALEY
 REGISTRATION NUMBER
 PE-7865
 ON 02/02/2018 AND THE
 ORIGINAL DOCUMENT IS
 STORED AT THE
 WALSH COUNTY HIGHWAY
 DEPARTMENT.

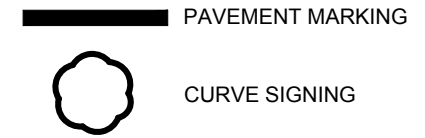
HLC-5000(014) WALSH COUNTY, NORTH DAKOTA			
	SCOPE OF WORK		
	<table border="1"> <tr> <td>DRWN BY ZV</td> <td>CHKD BY JD</td> <td>PROJECT NO. 6317117</td> </tr> </table>	DRWN BY ZV	CHKD BY JD
DRWN BY ZV	CHKD BY JD	PROJECT NO. 6317117	

STATE	PROJECT NO.	SECTION NO.	SHEET NO.
ND	HLC-5000(014)	4	5



**FOREST RIVER CORPORATE LIMITS
END HLC-5000(014) ~ SITE 11**
STA. 4663+24 = A POINT APPROXIMATELY
462 FEET NORTH OF THE SOUTHWEST
CORNER OF SEC. 28, TWP. 155 N., RGE. 53 W.

FOREST RIVER CORPORATE LIMITS
STA. 4658+62 = A POINT APPROXIMATELY
AT THE SOUTHWEST CORNER OF SEC. 28,
TWP. 155 N., RGE. 53 W.

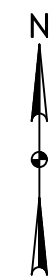


BEGIN HLC-5000(014) ~ SITE 11
STA. 4600+00 = A POINT APPROXIMATELY
1,050 FEET WEST OF THE SOUTHWEST
CORNER OF SEC. 28, TWP. 155 N., RGE. 53 W.

BEGIN HLC-5000(014) ~ SITE 11
STA. 4650+00 = A POINT APPROXIMATELY 862
FEET SOUTH OF THE SOUTHWEST CORNER
OF SEC. 28, TWP. 155 N., RGE. 53 W.

END HLC-5000(014) ~ SITE 11
STA. 4619+90 = A POINT APPROXIMATELY
940 FEET EAST OF THE SOUTHWEST
CORNER OF SEC. 28, TWP. 155 N., RGE. 53 W.

EXCEPTION
NORTHERN PLAINS RAILROAD
CROSSING NO. 681955A
STA. 4611+30 TO 4611+40 = 10 FEET



THIS DOCUMENT WAS
ORIGINALLY ISSUED AND
SEALED BY
JEFFREY D. DALEY
REGISTRATION NUMBER
PE-7865
ON 02/02/2018 AND THE
ORIGINAL DOCUMENT IS
STORED AT THE
WALSH COUNTY HIGHWAY
DEPARTMENT.

HLC-5000(014) WALSH COUNTY, NORTH DAKOTA		
	SCOPE OF WORK	
	DRWN. BY ZV	CHKD BY JD


PLAN NOTES

	STATE	PROJECT NO.	SECTION NO.	SHEET NO.
	ND	HLC-5000(014)	6	1

- 100-P01** **PROJECT COORDINATION:** This Project is tied with Project HLC-1000(052) and Project HLC-3400(014).
- 100-P02** **CONSTRUCTION ACTIVITIES:** Conduct work activities during daylight hours only and schedule construction activities to accommodate traffic before dark. Open both lanes during non-work hours and one lane open during working hours.
- 107-P01** **RAILROAD PROTECTIVE LIABILITY INSURANCE:** This Project crosses the Northern Plains Railroad at Sta. 4257+17 and 4611+35 and Burlington Northern Railroad at Sta. 1210+02 and 2276+28. The type of work that will be performed within the railroad right of way is striping direct inquiries regarding protective liability insurance to:
- Jesse Calich
Vice President Operations
Northern Plains Railroad
P.O. Box 38
Fordville, ND 58231
701-229-3330
Jesse_Calich@nprail.com
- Rosa Martinez
Marsh USA Inc.
4400 Comerica Bank Tower
Dallas, TX 75201-7357 USA
214-303-8519
Rosa.M.Martinez@marsh.com
- Obtain information from the Federal Railroad Administration Website:
<http://Safetydata.fra.dot.gov/officeofsafety/>
- 704-P01** **TRAFFIC CONTROL:** The following Standard Drawings are applicable to the construction activities.
- Standard Drawings: D-704-9, 11, 13, 14, 24, 27 and 50 are applicable. Layouts Type R and Type U on D-704-24 shall be used for shoulder closures; D-704-50 shall be used for mobile operations as required.
- The required traffic control signs and devices include: G20-2-48 – End Road Work (2), R2-1-48 - Speed Limit (2), W3-5-48 – Speed Reduction Ahead (1), W5-1-48 – Road Narrows (1), W20-1-48 – Road Work Ahead (2), W21-5-48 – Shoulder Work (1), and Tubular Markers (25). These devices will be included in the cost of the "Traffic Control" bid item. Provide additional devices required to accommodate the Contractor's operation at no additional cost to the Owner.
- These signs shall be used at multiple sites. No additional compensation will be paid for relocation due to work progression.
- 754-P01** **SIGN INSTALLATION:** Install chevrons perpendicular to both directions of oncoming traffic. Provide any additional mounting hardware needed to install the signs at the correct angle. Provide the mounting details to the Engineer prior to installation. Include all costs for labor and materials needed in the unit price bid for "STEEL GALV POSTS-TELESCOPING PERFORATED TUBE".
- 754-P02** **EXISTING SIGNS:** All existing signs and posts removed and not designated to be reset shall be salvaged and delivered to the Walsh County Highway Department located at 600 Cooper Avenue; Grafton, ND 58237. All costs associated with salvaging and delivering the signs shall be included in the price bid for "TRAFFIC CONTROL".
- 762-P01** **EDGE LINE:** Continue edge lines through private drives and break for intersections.

This document was originally issued and sealed by
Jeffrey D. Daley
Registration Number
PE- 7865,
on 02/02/2018 and the original document is stored at the
Walsh County Highway Department.

HLC-5000(014)
WALSH COUNTY, NORTH DAKOTA



PLAN NOTES

DRWN. BY ZV	CHKD. BY JD	PROJECT NO. 6317117
----------------	----------------	------------------------


	STATE	PROJECT NO.	SECTION NO.	SHEET NO.
	ND	HLC-5000(014)	8	1

ESTIMATE OF QUANTITIES

SPEC	CODE	ITEM DESCRIPTION	UNIT	HLC-5000(014)								
				SITE 1	SITE 2	SITE 3	SITE 4	SITE 5	SITE 6	SITE 7	SITE 8	
103	0100	CONTRACT BOND	L SUM	0.34	-	-	-	-	-	-	-	-
107	0109	RAILWAY PROTECTION INSURANCE - 4 LOCATIONS	L SUM	-	-	0.25	0.25	-	-	-	-	-
702	0100	MOBILIZATION	L SUM	0.34	-	-	-	-	-	-	-	-
704	1100	TRAFFIC CONTROL	L SUM	0.34	-	-	-	-	-	-	-	-
754	0110	FLAT SHEET FOR SIGNS-TYPE XI REFL SHEETING	SF	102.0	107.0	138.6	155.8	-	77.0	131.0	-	-
754	0206	STEEL GALV POSTS-TELESCOPING PERFORATED TUBE	LF	340.1	362.8	449.1	544.8	-	237.5	452.3	-	-
762	0103	PVMT MK PAINTED-MESSAGE	SF	-	-	-	-	-	-	-	-	-
762	1104	PVMT MK PAINTED 4IN LINE	LF	103,165	115,076	-	44,113	70,582	-	11,005	-	-
762	1106	PVMT MK PAINTED 6IN LINE	LF	-	-	103,888	-	-	108,769	-	26,019	-
762	1124	PVMT MK PAINTED 24N LINE	LF	-	-	-	-	-	-	-	-	-

SPEC	CODE	ITEM DESCRIPTION	UNIT	HLC-5000(014)			TOTAL
				SITE 9	SITE 10	SITE 11	
103	0100	CONTRACT BOND	L SUM	-	-	-	0.34
107	0109	RAILWAY PROTECTION INSURANCE - 4 LOCATIONS	L SUM	-	0.25	0.25	1
702	0100	MOBILIZATION	L SUM	-	-	-	0.34
704	1100	TRAFFIC CONTROL	L SUM	-	-	-	0.34
754	0110	FLAT SHEET FOR SIGNS-TYPE XI REFL SHEETING	SF	-	120.0	70.8	902.2
754	0206	STEEL GALV POSTS-TELESCOPING PERFORATED TUBE	LF	-	404.8	225.5	3,016.9
762	0103	PVMT MK PAINTED-MESSAGE	SF	-	-	156	156
762	1104	PVMT MK PAINTED 4IN LINE	LF	10,416	82,002	-	436,359
762	1106	PVMT MK PAINTED 6IN LINE	LF	-	-	-	238,676
762	1124	PVMT MK PAINTED 24IN LINE	LF	-	-	36	36

THIS DOCUMENT WAS
ORIGINALLY ISSUED AND
SEALED BY
JEFFREY D. DALEY
REGISTRATION NUMBER
PE-7865
ON 02/14/2018 AND THE
ORIGINAL DOCUMENT IS
STORED AT THE
WALSH COUNTY HIGHWAY
DEPARTMENT.

HLC-5000(014) WALSH COUNTY, NORTH DAKOTA		
	ESTIMATE OF QUANTITIES	
	DRAWN BY ZV	CHKD BY JD
PROJECT NO. 6317117		


	STATE	PROJECT NO.	SECTION NO.	SHEET NO.
	ND	HLC-5000(014)	11	1

PAVEMENT MARKING

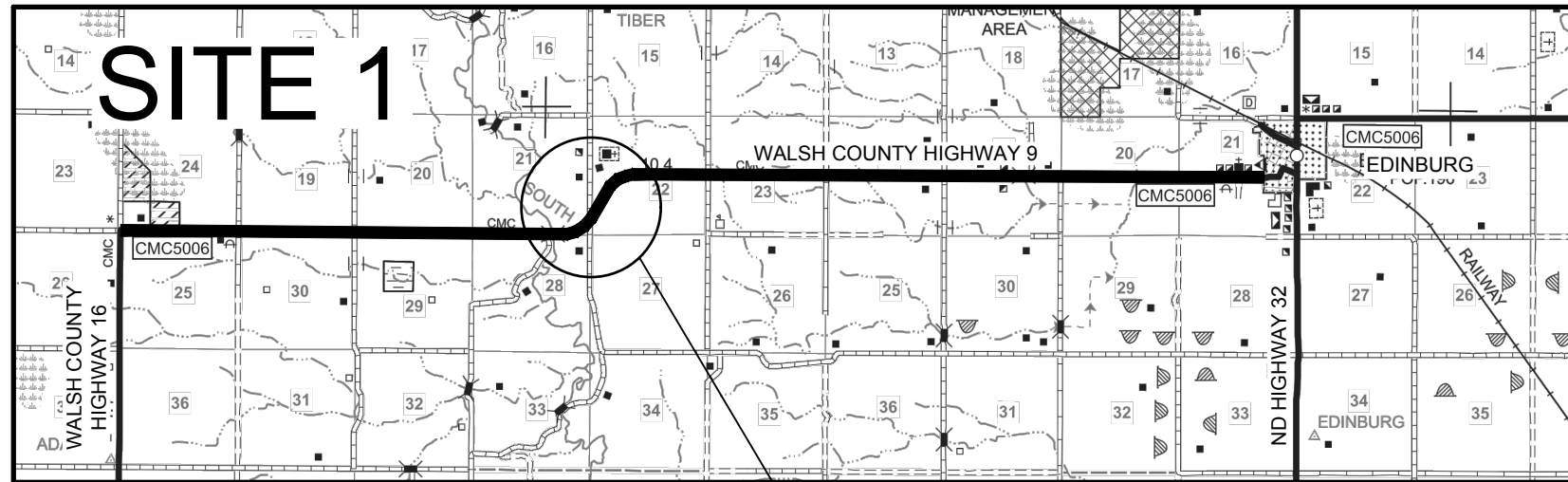
DESCRIPTION	UNIT	QUANTITY PER LOCATION
4" White Edge Line (Solid Line)		
Sta. 10+12 to Sta. 533+60 LT & RT (Site 1)	LF	103,165
Sta. 604+87 to Sta. 1187+72 LT & RT (Site 2)	LF	115,076
Sta. 2060+60 to Sta. 2283+64 LT & RT (Site 4)	LF	44,113
Sta. 2519+22 to Sta. 2875+55 LT & RT (Site 5)	LF	70,582
Sta. 3700+00 to Sta. 3755+92 LT & RT (Site 7)	LF	11,005
Sta. 4000+32 to Sta. 4052+40 LT & RT (Site 9)	LF	10,416
Sta. 4100+32 to Sta. 4516+39 LT & RT (Site 10)	LF	82,002
Subtotal	LF	436,359
6" White Edge Line (Solid Line)		
Sta. 1200+00 to Sta. 1729+55 LT & RT (Site 3)	LF	103,888
Sta. 3000+00 to Sta. 3556+14 LT & RT (Site 6)	LF	108,769
Sta. 3800+12 to Sta. 3931+53 LT & RT (Site 8)	LF	26,019
Subtotal	LF	238,676
24" White Line (Solid Line)		
Stop Bar @ Sta. 4610+90 (Site 11)	LF	12
Stop Bar @ Sta. 4658+00 (Site 11)	LF	12
Stop Bar @ Sta. 4659+24 (Site 11)	LF	12
Subtotal	LF	36
Total White Pavement Marking	LF	675,071
DESCRIPTION	UNIT	QUANTITY PER LOCATION
Pavement Marking Message		
Stop Ahead Marking @ Sta. 4618+90 (Site 11)	SF	52
Stop Ahead Marking @ Sta. 4651+00 (Site 11)	SF	52
Stop Ahead Marking @ Sta. 4662+24 (Site 11)	SF	52
Total	SF	156

*Takes into account breaks at intersections. (111 total)

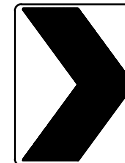
THIS DOCUMENT WAS
 ORIGINALLY ISSUED AND
 SEALED BY
 JEFFREY D. DALEY
 REGISTRATION NUMBER
 PE-7865
 ON 02/02/2018 AND THE
 ORIGINAL DOCUMENT IS
 STORED AT THE
 WALSH COUNTY HIGHWAY
 DEPARTMENT.

HLC-5000(014) WALSH COUNTY, NORTH DAKOTA		
	PAVEMENT MARKING	
	DRWN. BY ZV	CHKD BY JD

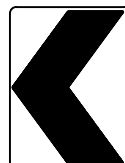
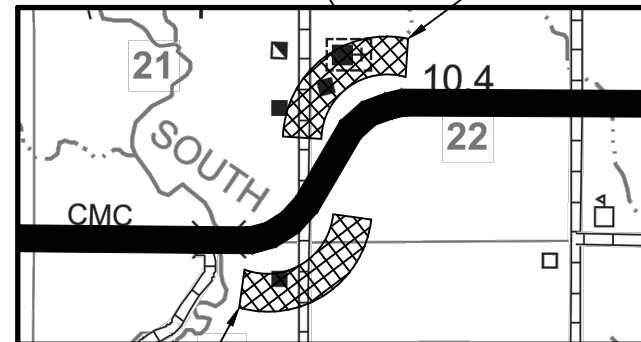
	STATE	PROJECT NO.	SECTION NO.	SHEET NO.
	ND	HLC-5000(014)	20	1



SITE 1



STA. 238+03 to 254+03 LT
 2 Single EA @ 200' Spacing
 7 Double Assembly EA @ 200' Spacing
 See Standard Drawing D-754-79

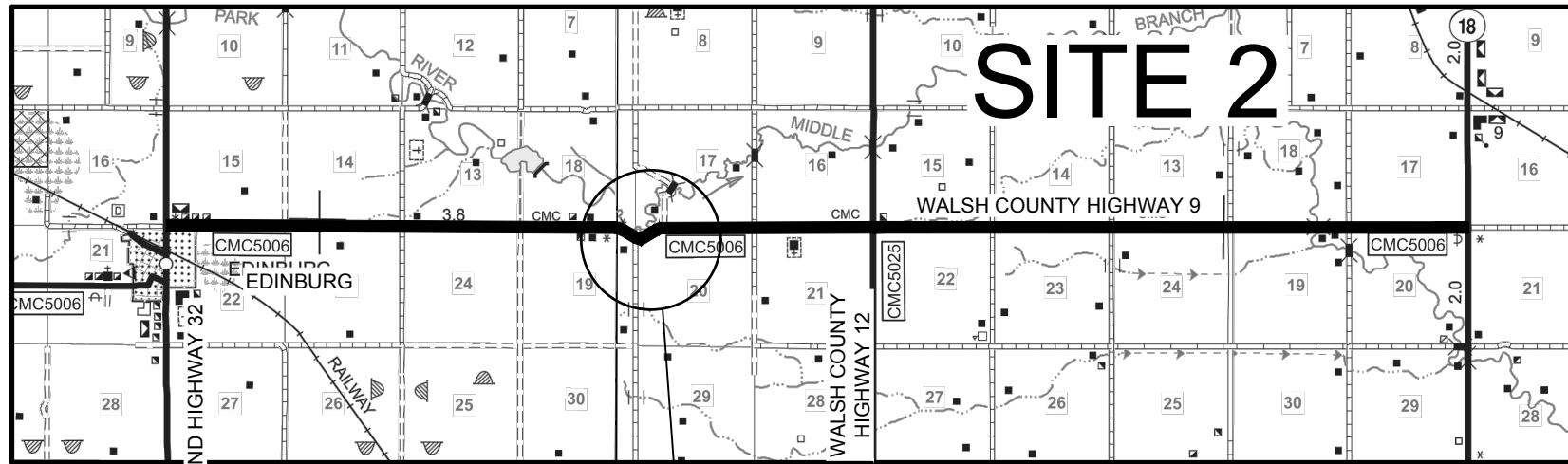


STA. 206+05 TO 224+05 RT
 2 Single EA @ 200' Spacing
 8 Double Assembly EA @ 200' Spacing
 See Standard Drawing D-754-79

THIS DOCUMENT WAS
 ORIGINALLY ISSUED AND
 SEALED BY
 JEFFREY D. DALEY
 REGISTRATION NUMBER
 PE-7865
 ON 02/02/2018 AND THE
 ORIGINAL DOCUMENT IS
 STORED AT THE
 WALSH COUNTY HIGHWAY
 DEPARTMENT.

HLC-5000(014) WALSH COUNTY, NORTH DAKOTA		
	SIGN LOCATION DETAILS	
	<small>DRWN. BY</small> ZV	<small>CHKD BY</small> JD

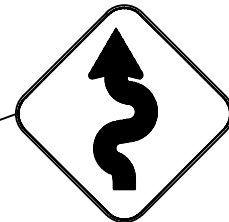
STATE	PROJECT NO.	SECTION NO.	SHEET NO.
ND	HLC-5000(014)	20	2



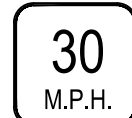
SITE 2



REMOVE
STA. 831+55 LT
W1-5
W13-1P

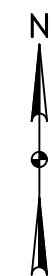


W1-5R-30



W13-1P-18

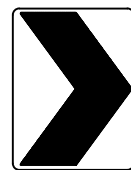
STA. 833+24 LT
Assembly 53



THIS DOCUMENT WAS
ORIGINALLY ISSUED AND
SEALED BY
JEFFREY D. DALEY
REGISTRATION NUMBER
PE-7865
ON 02/02/2018 AND THE
ORIGINAL DOCUMENT IS
STORED AT THE
WALSH COUNTY HIGHWAY
DEPARTMENT.

HLC-5000(014) WALSH COUNTY, NORTH DAKOTA						
	SIGN LOCATION DETAILS					
	<table border="1" style="width: 100%;"> <tr> <td style="font-size: small;">DRAWN BY</td> <td style="font-size: small;">CHKD BY</td> <td style="font-size: small;">PROJECT NO.</td> </tr> <tr> <td style="text-align: center;">ZV</td> <td style="text-align: center;">JD</td> <td style="text-align: center;">6317117</td> </tr> </table>	DRAWN BY	CHKD BY	PROJECT NO.	ZV	JD
DRAWN BY	CHKD BY	PROJECT NO.				
ZV	JD	6317117				

REMOVE
STA. 806+22 TO 808+38 LT
W1-8
2 SINGLE
1 DOUBLE



STA. 805+82 to 809+42 LT
2 Single EA @ 120' Spacing
2 Double Assembly EA @ 120' Spacing
See Standard Drawing D-754-79

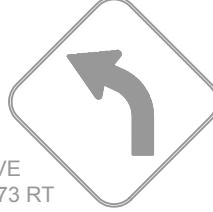


REMOVE
STA. 816+09 & 826+75 LT
W1-2
W13-1P

STA. 826+24 to 832+24 LT
2 Single EA @ 120' Spacing
4 Double Assembly EA @ 120' Spacing
See Standard Drawing D-754-79



REMOVE
STA. 828+75 LT
W1-8
1 DOUBLE



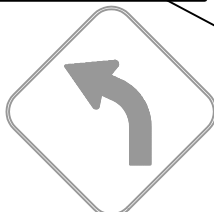
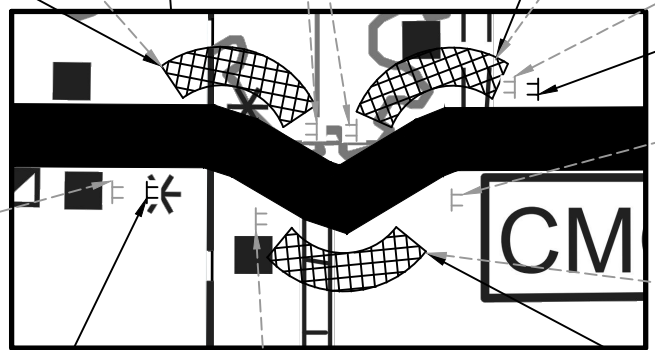
REMOVE
STA. 822+73 RT
W1-2
W13-1P



REMOVE
STA. 817+13 TO 819+45RT
W1-8
2 SINGLE
2 DOUBLE



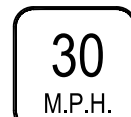
STA. 815+48 TO 821+08 RT
2 Single EA @ 80' Spacing
6 Double Assembly EA @ 80' Spacing
See Standard Drawing D-754-79



REMOVE
STA. 809+01 RT
W1-2
W13-1P



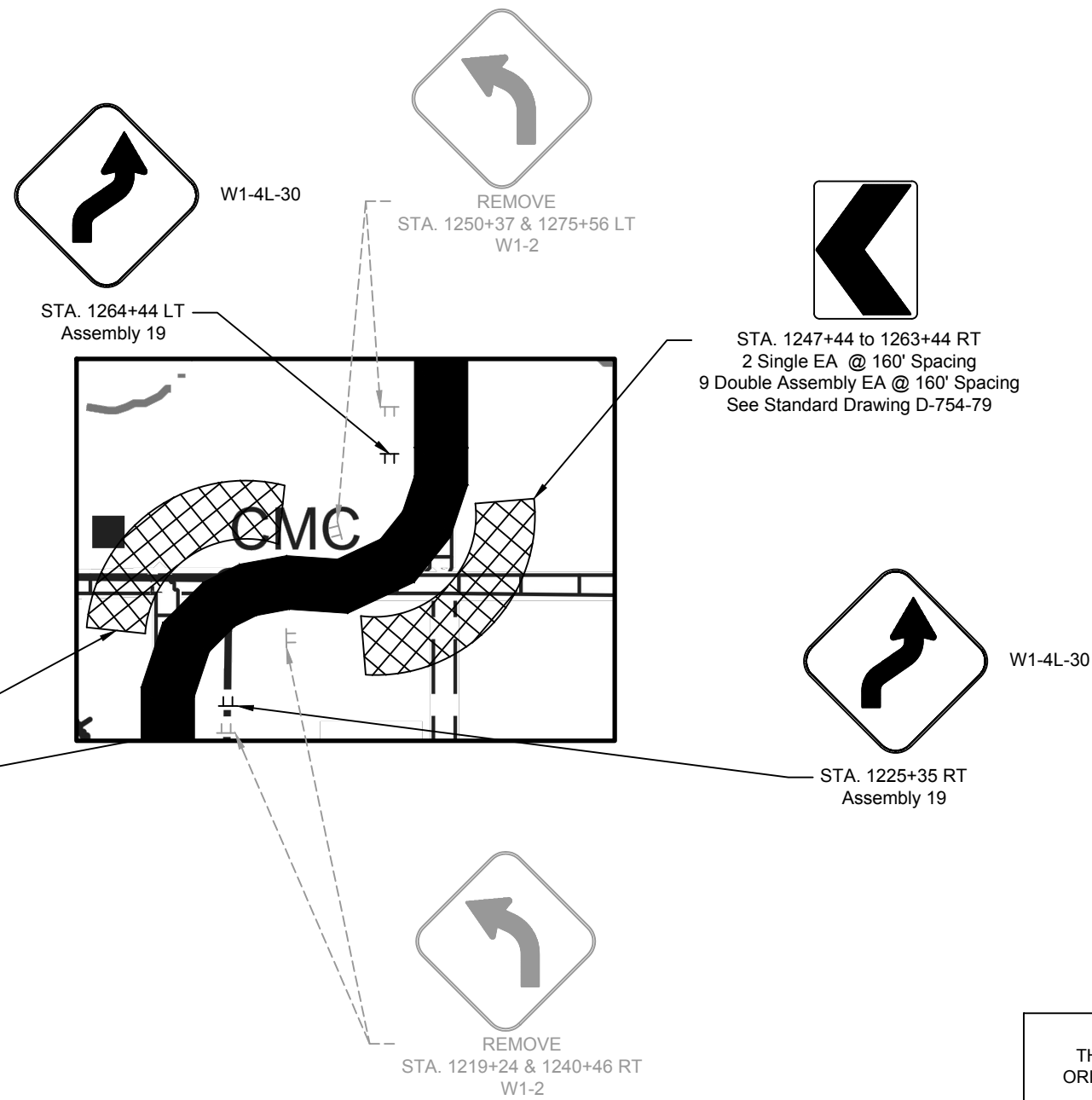
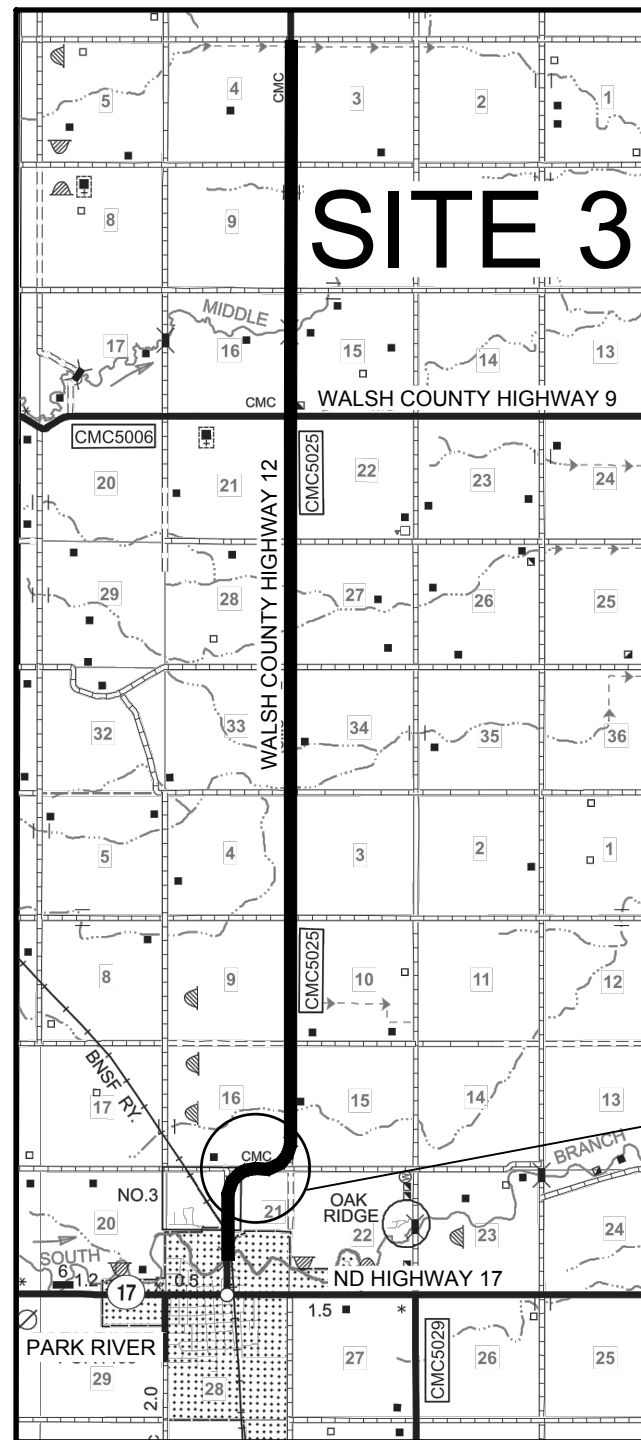
W1-5L-30



W13-1P-18

STA. 804+82 RT
Assembly 53

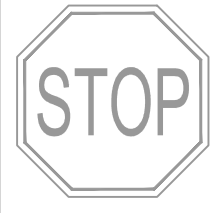
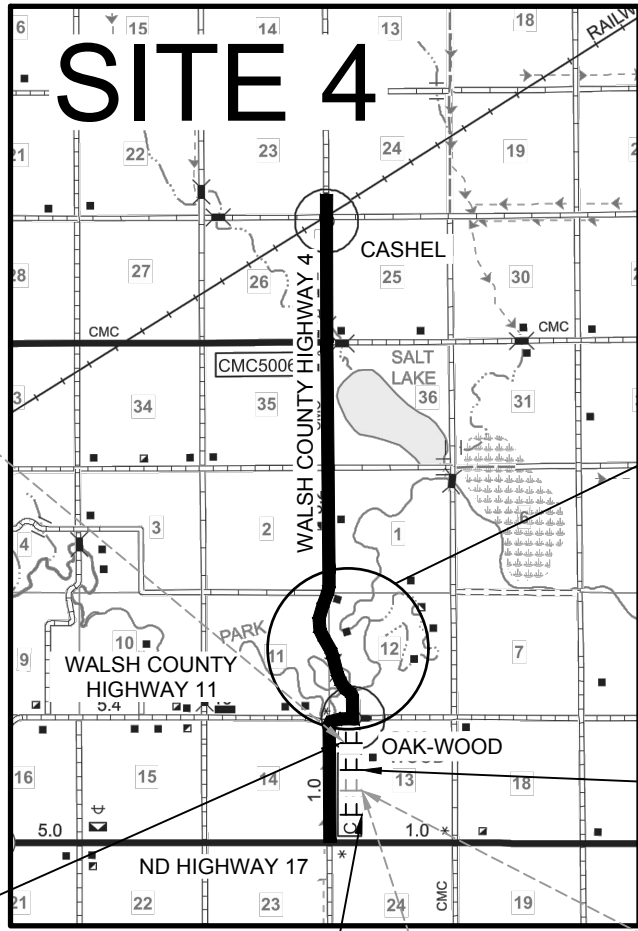
STATE	PROJECT NO.	SECTION NO.	SHEET NO.
ND	HLC-5000(014)	20	3



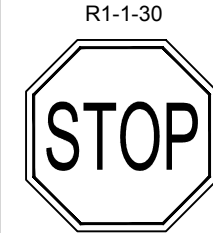
THIS DOCUMENT WAS
ORIGINALLY ISSUED AND
SEALED BY
JEFFREY D. DALEY
REGISTRATION NUMBER
PE-7865
ON 02/02/2018 AND THE
ORIGINAL DOCUMENT IS
STORED AT THE
WALSH COUNTY HIGHWAY
DEPARTMENT.

HLC-5000(014) WALSH COUNTY, NORTH DAKOTA			
	SIGN LOCATION DETAILS		
	<table border="1"> <tr> <td>DRWN. BY ZV</td> <td>CHKD BY JD</td> <td>PROJECT NO. 6317117</td> </tr> </table>	DRWN. BY ZV	CHKD BY JD
DRWN. BY ZV	CHKD BY JD	PROJECT NO. 6317117	

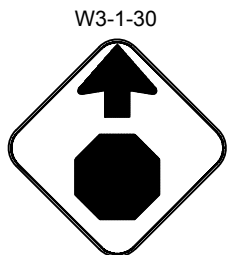
STATE	PROJECT NO.	SECTION NO.	SHEET NO.
ND	HLC-5000(014)	20	4



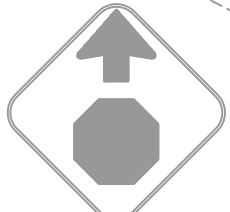
REMOVE
STA. 2050+10 RT
R1-1



STA. 2050+09 RT
Assembly 1



STA. 2037+64 RT
Assembly 19



REMOVE
STA. 2039+54 RT
W3-1



M2-1-21



M1-6-24

STA. 2044+09 RT
Assembly 391



REMOVE
STA. 2045+49 RT
M2-1



W1-5R-30



W13-1P-18

STA. 2067+67 RT
Assembly 53



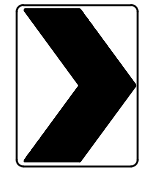
W1-5L-30



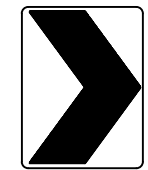
STA. 2121+80 LT
Assembly 53



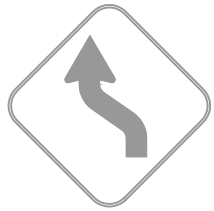
REMOVE
STA. 2081+00 TO 2116+95 LT
W1-8
3 DOUBLE



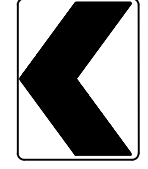
STA. 2098+22 TO 2110+22 LT
2 Single EA @ 200' Spacing
5 Double Assembly EA @ 200' Spacing
See Standard Drawing D-754-79



STA. 2072+69 TO 2080+69 LT
2 Single EA @ 200' Spacing
3 Double Assembly EA @ 200' Spacing
See Standard Drawing D-754-79



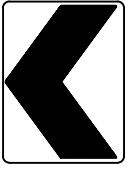
REMOVE
STA. 2065+26 RT
W1-4



STA. 2116+00 TO 2120+80 RT
2 Single EA @ 160' Spacing
2 Double Assembly EA @ 160' Spacing
See Standard Drawing D-754-79



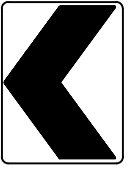
REMOVE
STA. 2081+00 TO 2116+95 RT
W1-8
3 DOUBLE



STA. 2088+77 TO 2092+77 RT
2 Single EA @ 200' Spacing
1 Double Assembly EA @ 200' Spacing
See Standard Drawing D-754-79



REMOVE
STA. 2080+63 RT
W1-5



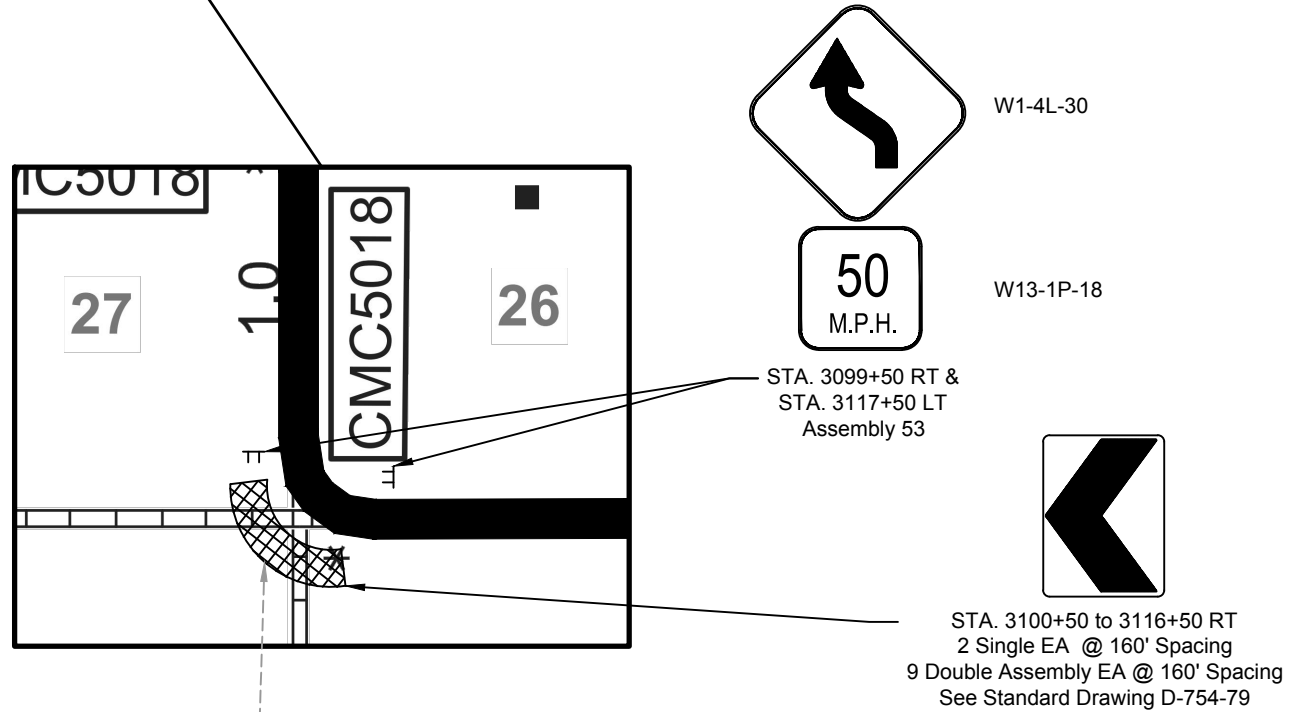
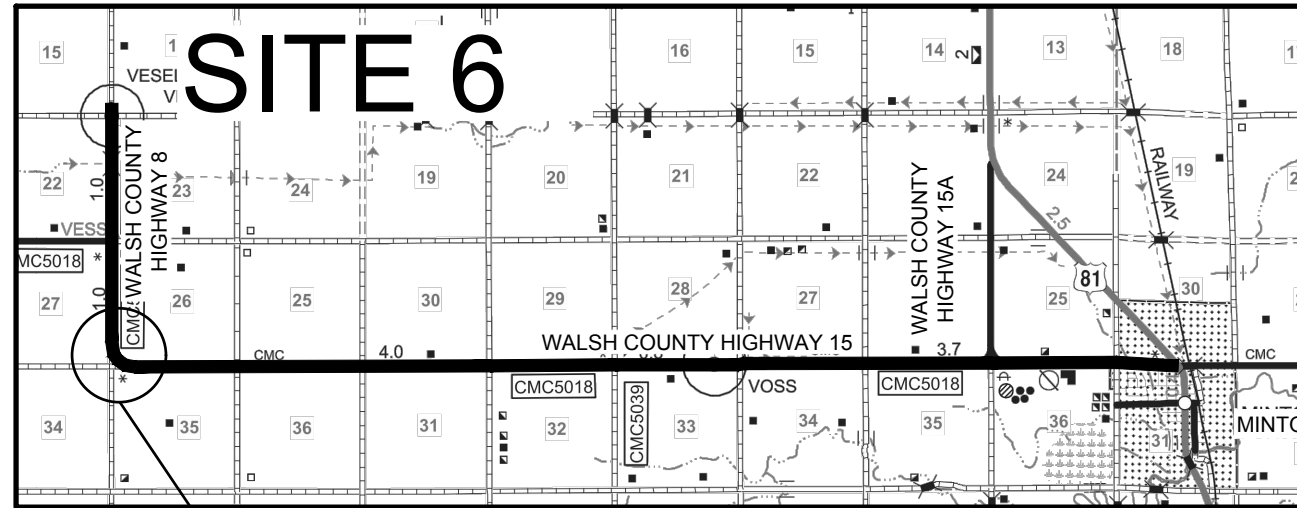
STA. 2068+67 TO 2072+67 RT
2 Single EA @ 80' Spacing
4 Double Assembly EA @ 80' Spacing
See Standard Drawing D-754-79



THIS DOCUMENT WAS
ORIGINALLY ISSUED AND
SEALED BY
JEFFREY D. DALEY
REGISTRATION NUMBER
PE-7865
ON 02/02/2018 AND THE
ORIGINAL DOCUMENT IS
STORED AT THE
WALSH COUNTY HIGHWAY
DEPARTMENT.

HLC-5000(014) WALSH COUNTY, NORTH DAKOTA		
	SIGN LOCATION DETAILS	
	<small>DRAWN BY</small> ZV	<small>CHKD BY</small> JD

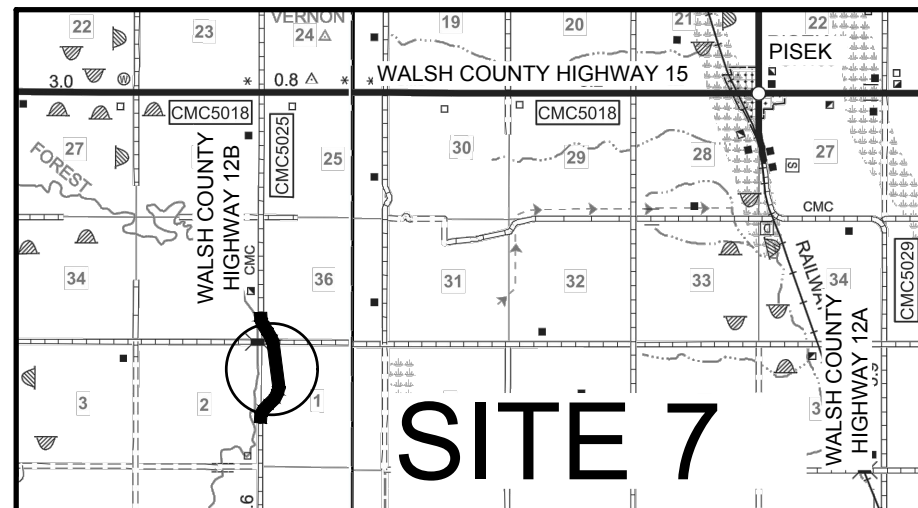
	STATE	PROJECT NO.	SECTION NO.	SHEET NO.
	ND	HLC-5000(014)	20	5



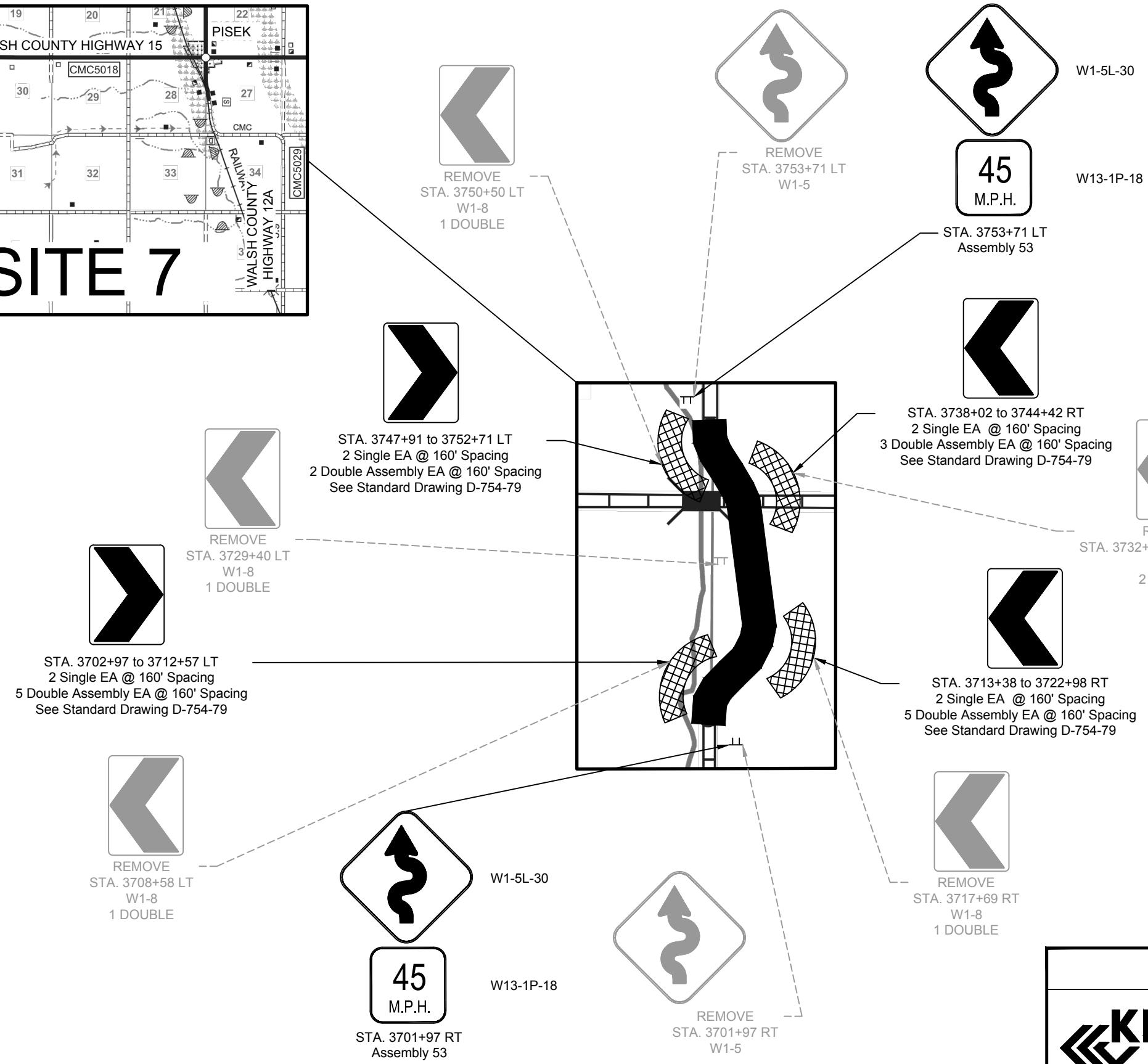
THIS DOCUMENT WAS
ORIGINALLY ISSUED AND
SEALED BY
JEFFREY D. DALEY
REGISTRATION NUMBER
PE-7865
ON 02/02/2018 AND THE
ORIGINAL DOCUMENT IS
STORED AT THE
WALSH COUNTY HIGHWAY
DEPARTMENT.

HLC-5000(014) WALSH COUNTY, NORTH DAKOTA			
	SIGN LOCATION DETAILS		
	<table border="1"> <tr> <td>DRWN. BY ZV</td> <td>CHKD BY JD</td> <td>PROJECT NO. 6317117</td> </tr> </table>	DRWN. BY ZV	CHKD BY JD
DRWN. BY ZV	CHKD BY JD	PROJECT NO. 6317117	

STATE	PROJECT NO.	SECTION NO.	SHEET NO.
ND	HLC-5000(014)	20	6



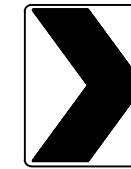
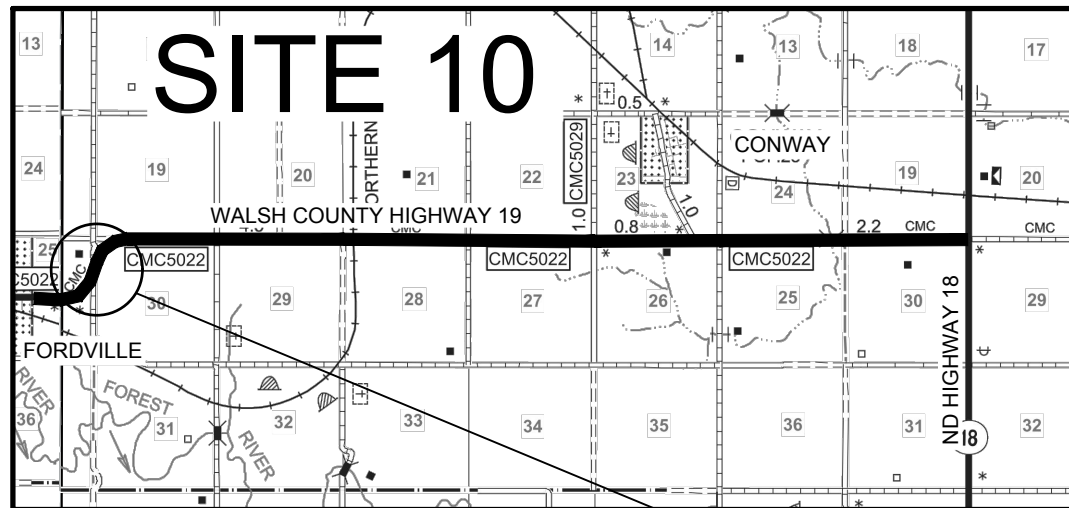
SITE 7



THIS DOCUMENT WAS
ORIGINALLY ISSUED AND
SEALED BY
JEFFREY D. DALEY
REGISTRATION NUMBER
PE-7865
ON 02/02/2018 AND THE
ORIGINAL DOCUMENT IS
STORED AT THE
WALSH COUNTY HIGHWAY
DEPARTMENT.

HLC-5000(014) WALSH COUNTY, NORTH DAKOTA						
	SIGN LOCATION DETAILS					
	<table border="1"> <tr> <td>DRWN. BY</td> <td>CHKD BY</td> <td>PROJECT NO.</td> </tr> <tr> <td>ZV</td> <td>JD</td> <td>6317117</td> </tr> </table>	DRWN. BY	CHKD BY	PROJECT NO.	ZV	JD
DRWN. BY	CHKD BY	PROJECT NO.				
ZV	JD	6317117				

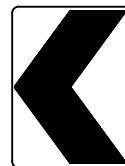
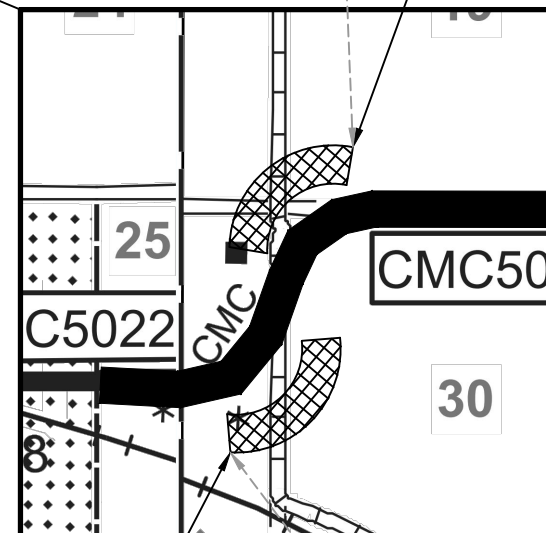
	STATE	PROJECT NO.	SECTION NO.	SHEET NO.
	ND	HLC-5000(014)	20	7



STA. 4142+92 to 4162+92 LT
 2 Single EA @ 200' Spacing
 9 Double Assembly EA @ 200' Spacing
 See Standard Drawing D-754-79



REMOVE
 STA. 4146+87 TO 4162+76 LT
 W1-8
 5 DOUBLE



STA. 4119+23 to 4139+23 RT
 2 Single EA @ 200' Spacing
 9 Double Assembly EA @ 200' Spacing
 See Standard Drawing D-754-79

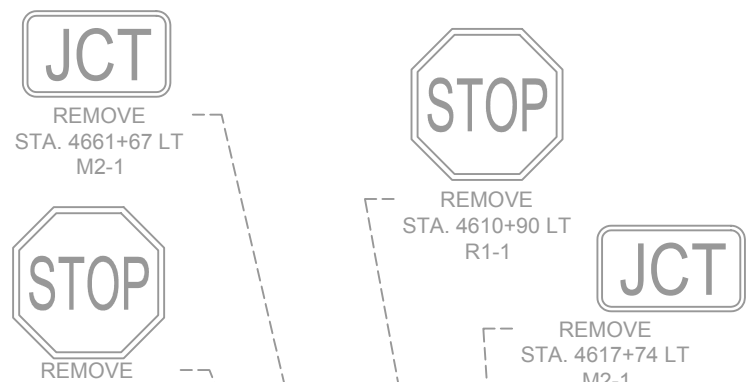
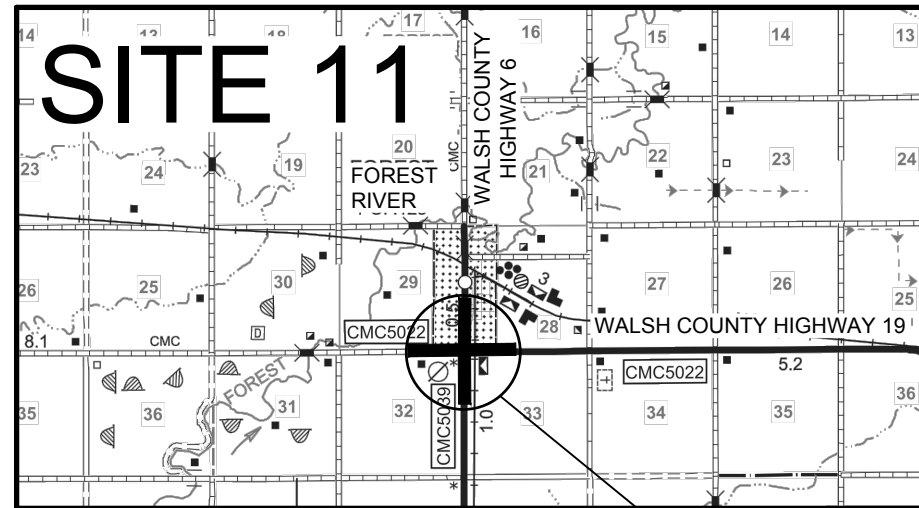


REMOVE
 STA. 4119+23 TO 4134+23 RT
 W1-8
 4 DOUBLE

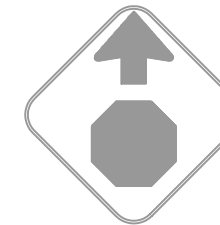
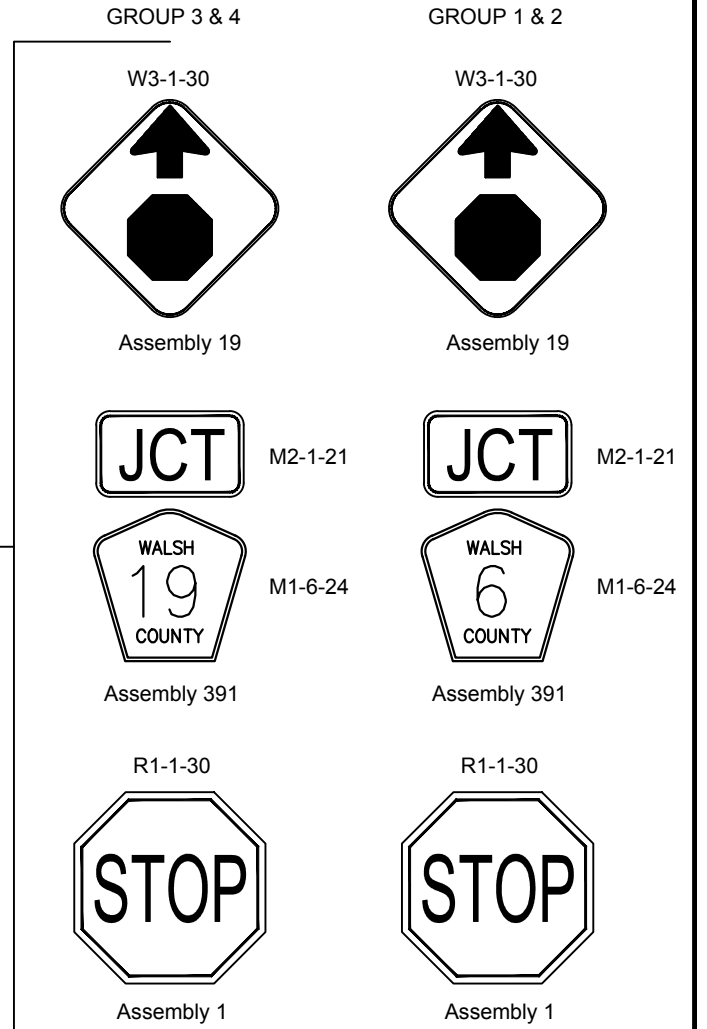
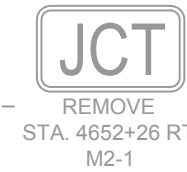
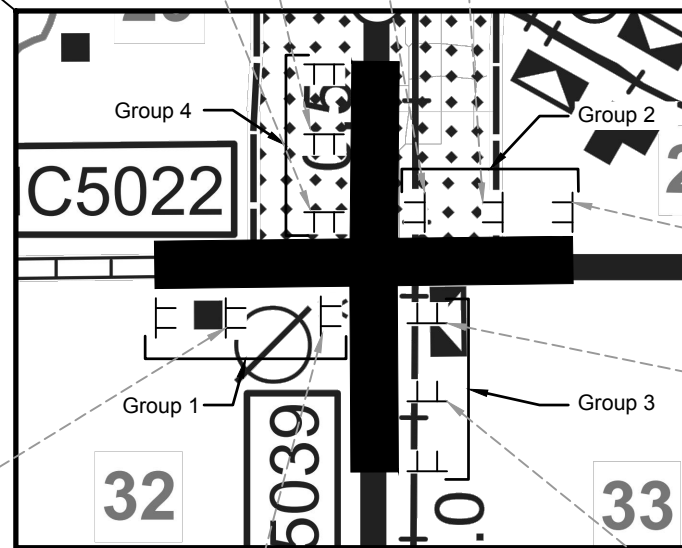
THIS DOCUMENT WAS
 ORIGINALLY ISSUED AND
 SEALED BY
 JEFFREY D. DALEY
 REGISTRATION NUMBER
 PE-7865
 ON 02/02/2018 AND THE
 ORIGINAL DOCUMENT IS
 STORED AT THE
 WALSH COUNTY HIGHWAY
 DEPARTMENT.

HLC-5000(014) WALSH COUNTY, NORTH DAKOTA			
	SIGN LOCATION DETAILS		
	<table border="1"> <tr> <td>DRWN. BY ZV</td> <td>CHKD BY JD</td> <td>PROJECT NO. 6317117</td> </tr> </table>	DRWN. BY ZV	CHKD BY JD
DRWN. BY ZV	CHKD BY JD	PROJECT NO. 6317117	

STATE	PROJECT NO.	SECTION NO.	SHEET NO.
ND	HLC-5000(014)	20	8




- Group 1:
W3-1-30 @ 4600+00 RT
M2-1-21/M1-6-24 @ 4605+00 RT
R1-1-30 @ 4610+00 RT
- Group 2:
R1-1-30 @ 4610+90 LT
M2-1-21/M1-6-24 @ 4617+65 LT
W3-1-30 @ 4619+90 LT
- Group 3:
W3-1-30 @ 4650+00 RT
M2-1-21/M1-6-24 @ 4654+00 RT
R1-1-30 @ 4658+00 RT
- Group 4:
R1-1-30 @ 4659+24 LT
M2-1-21/M1-6-24 @ 4661+24 LT
W3-1-30 @ 4663+24 LT



THIS DOCUMENT WAS
ORIGINALLY ISSUED AND
SEALED BY
JEFFREY D. DALEY
REGISTRATION NUMBER
PE-7865
ON 02/02/2018 AND THE
ORIGINAL DOCUMENT IS
STORED AT THE
WALSH COUNTY HIGHWAY
DEPARTMENT.

HLC-5000(014)
WALSH COUNTY, NORTH DAKOTA



**SIGN LOCATION
DETAILS**

DRWN. BY ZV	CHKD BY JD	PROJECT NO. 6317117
----------------	---------------	------------------------

STATE	PROJECT NO.	SECTION NO.	SHEET NO.
N.D.	HLC-5000(014)	110	1

Station / RP	Sign No.	Assembly No.	Flat Sheet For Signs		Sign Support Length				Vert Clearance FT	Support Size	Max Post Len LF	Sleeve Length				Sleeve Size	Anchor EA	Anchor LF	Anchor Size	Reset Sign Panel EA	Reset Sign Support EA	Break-Away EA	Comments
			IV SF	XI SF	1st LF	2nd LF	3rd LF	4th LF				1st LF	2nd LF	3rd LF	4th LF								
206+05 Rt	W1-8			3.0		13.9			5.0	2 x 2 12 ga	14.6						1	4	2.25 x 2.25 12 ga				
208+05 Rt	W1-8			6.0		13.9			5.0	2 x 2 12 ga	14.6						1	4	2.25 x 2.25 12 ga				
210+05 Rt	W1-8			6.0		13.9			5.0	2 x 2 12 ga	14.6						1	4	2.25 x 2.25 12 ga				
212+05 Rt	W1-8			6.0		13.9			5.0	2 x 2 12 ga	14.6						1	4	2.25 x 2.25 12 ga				
214+05 Rt	W1-8			6.0		13.9			5.0	2 x 2 12 ga	14.6						1	4	2.25 x 2.25 12 ga				
216+05 Rt	W1-8			6.0		13.9			5.0	2 x 2 12 ga	14.6						1	4	2.25 x 2.25 12 ga				
218+05 Rt	W1-8			6.0		13.9			5.0	2 x 2 12 ga	14.6						1	4	2.25 x 2.25 12 ga				
220+05 Rt	W1-8			6.0		13.9			5.0	2 x 2 12 ga	14.6						1	4	2.25 x 2.25 12 ga				
222+05 Rt	W1-8			6.0		13.9			5.0	2 x 2 12 ga	14.6						1	4	2.25 x 2.25 12 ga				
224+05 Rt	W1-8			3.0		13.9			5.0	2 x 2 12 ga	14.6						1	4	2.25 x 2.25 12 ga				
238+03 Lt	W1-8			3.0		13.9			5.0	2 x 2 12 ga	14.6						1	4	2.25 x 2.25 12 ga				
240+03 Lt	W1-8			6.0		13.9			5.0	2 x 2 12 ga	14.6						1	4	2.25 x 2.25 12 ga				
242+03 Lt	W1-8			6.0		13.9			5.0	2 x 2 12 ga	14.6						1	4	2.25 x 2.25 12 ga				
244+03 Lt	W1-8			6.0		13.9			5.0	2 x 2 12 ga	14.6						1	4	2.25 x 2.25 12 ga				
246+03 Lt	W1-8			6.0		13.9			5.0	2 x 2 12 ga	14.6						1	4	2.25 x 2.25 12 ga				
248+03 Lt	W1-8			6.0		13.9			5.0	2 x 2 12 ga	14.6						1	4	2.25 x 2.25 12 ga				
250+03 Lt	W1-8			6.0		13.9			5.0	2 x 2 12 ga	14.6						1	4	2.25 x 2.25 12 ga				
252+03 Lt	W1-8			6.0		13.9			5.0	2 x 2 12 ga	14.6						1	4	2.25 x 2.25 12 ga				
254+03 Lt	W1-8			3.0		13.9			5.0	2 x 2 12 ga	14.6						1	4	2.25 x 2.25 12 ga				
804+82 Rt	W1-5	53		8.5		16.3			5.0	2.5 x 2.5 12 ga	16.8	5.9			2.25 x 2.25 12 ga		1	4	3 x 3 7 ga			1	
805+82 Lt	W1-8			3.0		13.9			5.0	2 x 2 12 ga	14.6						1	4	2.25 x 2.25 12 ga				
807+02 Lt	W1-8			6.0		13.9			5.0	2 x 2 12 ga	14.6						1	4	2.25 x 2.25 12 ga				
808+22 Lt	W1-8			6.0		13.9			5.0	2 x 2 12 ga	14.6						1	4	2.25 x 2.25 12 ga				
809+42 Lt	W1-8			3.0		13.9			5.0	2 x 2 12 ga	14.6						1	4	2.25 x 2.25 12 ga				
815+48 Rt	W1-8			3.0		13.9			5.0	2 x 2 12 ga	14.6						1	4	2.25 x 2.25 12 ga				
816+28 Rt	W1-8			6.0		13.9			5.0	2 x 2 12 ga	14.6						1	4	2.25 x 2.25 12 ga				
817+08 Rt	W1-8			6.0		13.9			5.0	2 x 2 12 ga	14.6						1	4	2.25 x 2.25 12 ga				
817+88 Rt	W1-8			6.0		13.9			5.0	2 x 2 12 ga	14.6						1	4	2.25 x 2.25 12 ga				
818+68 Rt	W1-8			6.0		13.9			5.0	2 x 2 12 ga	14.6						1	4	2.25 x 2.25 12 ga				
819+48 Rt	W1-8			6.0		13.9			5.0	2 x 2 12 ga	14.6						1	4	2.25 x 2.25 12 ga				
820+28 Rt	W1-8			6.0		13.9			5.0	2 x 2 12 ga	14.6						1	4	2.25 x 2.25 12 ga				
821+08 Rt	W1-8			3.0		13.9			5.0	2 x 2 12 ga	14.6						1	4	2.25 x 2.25 12 ga				
826+24 Lt	W1-8			3.0		13.9			5.0	2 x 2 12 ga	14.6						1	4	2.25 x 2.25 12 ga				
827+44 Lt	W1-8			6.0		13.9			5.0	2 x 2 12 ga	14.6						1	4	2.25 x 2.25 12 ga				
828+64 Lt	W1-8			6.0		13.9			5.0	2 x 2 12 ga	14.6						1	4	2.25 x 2.25 12 ga				
829+84 Lt	W1-8			6.0		13.9			5.0	2 x 2 12 ga	14.6						1	4	2.25 x 2.25 12 ga				
831+04 Lt	W1-8			6.0		13.9			5.0	2 x 2 12 ga	14.6						1	4	2.25 x 2.25 12 ga				
832+24 Lt	W1-8			3.0		13.9			5.0	2 x 2 12 ga	14.6						1	4	2.25 x 2.25 12 ga				
833+24 Lt	W1-5R	53		8.5		16.3			5.0	2.5 x 2.5 12 ga	16.8	5.9			2.25 x 2.25 12 ga		1	4	3 x 3 7 ga			1	
1225+35 Rt	W1-4R	19		6.3		14.7			5.0	2.25 x 2.25 12 ga	19.3	3.1			2 x 2 12 ga		1	4	3 x 3 7 ga			1	
1226+35 Lt	W1-8			3.0		13.9			5.0	2 x 2 12 ga	14.6						1	4	2.25 x 2.25 12 ga				
1227+95 Lt	W1-8			6.0		13.9			5.0	2 x 2 12 ga	14.6						1	4	2.25 x 2.25 12 ga				

<p>This document was originally issued and sealed by Jefferey D. Daley, Registration Number PE-7865, on 2/2/2018 and is stored at the Walsh County Highway Department.</p>	<p>Sign Summary Perforated Tube</p>
--	---

STATE	PROJECT NO.	SECTION NO.	SHEET NO.
N.D.	HLC-5000(014)	110	2

Station / RP	Sign No.	Assembly No.	Flat Sheet For Signs		Sign Support Length				Vert Clearance FT	Support Size	Max Post Len LF	Sleeve Length				Sleeve Size	Anchor EA	Anchor LF	Anchor Size	Reset Sign Panel EA	Reset Sign Support EA	Break-Away EA	Comments
			IV SF	XI SF	1st LF	2nd LF	3rd LF	4th LF				1st LF	2nd LF	3rd LF	4th LF								
1229+55 Lt	W1-8			6.0		13.9			5.0	2 x 2 12 ga	14.6						1	4	2.25 x 2.25 12 ga				
1231+15 Lt	W1-8			6.0		13.9			5.0	2 x 2 12 ga	14.6						1	4	2.25 x 2.25 12 ga				
1232+75 Lt	W1-8			6.0		13.9			5.0	2 x 2 12 ga	14.6						1	4	2.25 x 2.25 12 ga				
1234+35 Lt	W1-8			6.0		13.9			5.0	2 x 2 12 ga	14.6						1	4	2.25 x 2.25 12 ga				
1235+95 Lt	W1-8			6.0		13.9			5.0	2 x 2 12 ga	14.6						1	4	2.25 x 2.25 12 ga				
1237+55 Lt	W1-8			6.0		13.9			5.0	2 x 2 12 ga	14.6						1	4	2.25 x 2.25 12 ga				
1239+15 Lt	W1-8			6.0		13.9			5.0	2 x 2 12 ga	14.6						1	4	2.25 x 2.25 12 ga				
1240+75 Lt	W1-8			6.0		13.9			5.0	2 x 2 12 ga	14.6						1	4	2.25 x 2.25 12 ga				
1242+35 Lt	W1-8			6.0		13.9			5.0	2 x 2 12 ga	14.6						1	4	2.25 x 2.25 12 ga				
1243+95 Lt	W1-8			3.0		13.9			5.0	2 x 2 12 ga	14.6						1	4	2.25 x 2.25 12 ga				
1247+44 Rt	W1-8			3.0		13.9			5.0	2 x 2 12 ga	14.6						1	4	2.25 x 2.25 12 ga				
1249+04 Rt	W1-8			6.0		13.9			5.0	2 x 2 12 ga	14.6						1	4	2.25 x 2.25 12 ga				
1250+64 Rt	W1-8			6.0		13.9			5.0	2 x 2 12 ga	14.6						1	4	2.25 x 2.25 12 ga				
1252+24 Rt	W1-8			6.0		13.9			5.0	2 x 2 12 ga	14.6						1	4	2.25 x 2.25 12 ga				
1253+84 Rt	W1-8			6.0		13.9			5.0	2 x 2 12 ga	14.6						1	4	2.25 x 2.25 12 ga				
1255+44 Rt	W1-8			6.0		13.9			5.0	2 x 2 12 ga	14.6						1	4	2.25 x 2.25 12 ga				
1257+04 Rt	W1-8			6.0		13.9			5.0	2 x 2 12 ga	14.6						1	4	2.25 x 2.25 12 ga				
1258+64 Rt	W1-8			6.0		13.9			5.0	2 x 2 12 ga	14.6						1	4	2.25 x 2.25 12 ga				
1260+24 Rt	W1-8			6.0		13.9			5.0	2 x 2 12 ga	14.6						1	4	2.25 x 2.25 12 ga				
1261+84 Rt	W1-8			6.0		13.9			5.0	2 x 2 12 ga	14.6						1	4	2.25 x 2.25 12 ga				
1263+44 Rt	W1-8			3.0		13.9			5.0	2 x 2 12 ga	14.6						1	4	2.25 x 2.25 12 ga				
1264+44 Rt	W1-4L	19		6.3		14.7			5.0	2.25 x 2.25 12 ga	19.3	3.1			2 x 2 12 ga		1	4	3 x 3 7 ga			1	
2037+64 Rt	W3-1	19		6.3		14.7			5.0	2.25 x 2.25 12 ga	19.3	3.1			2 x 2 12 ga		1	4	3 x 3 7 ga			1	
2044+09 Rt	M1-6	391		6.2		15.3			5.0	2.5 x 2.5 12 ga	15.9						1	4	3 x 3 7 ga				
2050+09 Rt	R1-1	19		6.3		14.7			5.0	2.25 x 2.25 12 ga	19.3	3.1			2 x 2 12 ga		1	4	3 x 3 7 ga			1	
2067+67 Rt	W1-5R	53		8.5		16.3			5.0	2.5 x 2.5 12 ga	16.8	5.9			2.25 x 2.25 12 ga		1	4	3 x 3 7 ga			1	
2068+67 Rt	W1-8			3.0		13.9			5.0	2 x 2 12 ga	14.6						1	4	2.25 x 2.25 12 ga				
2069+47 Rt	W1-8			6.0		13.9			5.0	2 x 2 12 ga	14.6						1	4	2.25 x 2.25 12 ga				
2070+27 Rt	W1-8			6.0		13.9			5.0	2 x 2 12 ga	14.6						1	4	2.25 x 2.25 12 ga				
2071+07 Rt	W1-8			6.0		13.9			5.0	2 x 2 12 ga	14.6						1	4	2.25 x 2.25 12 ga				
2071+87 Rt	W1-8			6.0		13.9			5.0	2 x 2 12 ga	14.6						1	4	2.25 x 2.25 12 ga				
2072+67 Rt	W1-8			3.0		13.9			5.0	2 x 2 12 ga	14.6						1	4	2.25 x 2.25 12 ga				
2072+69 Lt	W1-8			3.0		13.9			5.0	2 x 2 12 ga	14.6						1	4	2.25 x 2.25 12 ga				
2074+69 Lt	W1-8			6.0		13.9			5.0	2 x 2 12 ga	14.6						1	4	2.25 x 2.25 12 ga				
2076+69 Lt	W1-8			6.0		13.9			5.0	2 x 2 12 ga	14.6						1	4	2.25 x 2.25 12 ga				
2078+69 Lt	W1-8			6.0		13.9			5.0	2 x 2 12 ga	14.6						1	4	2.25 x 2.25 12 ga				
2080+69 Lt	W1-8			3.0		13.9			5.0	2 x 2 12 ga	14.6						1	4	2.25 x 2.25 12 ga				
2088+77 Rt	W1-8			3.0		13.9			5.0	2 x 2 12 ga	14.6						1	4	2.25 x 2.25 12 ga				
2090+77 Rt	W1-8			6.0		13.9			5.0	2 x 2 12 ga	14.6						1	4	2.25 x 2.25 12 ga				
2092+77 Rt	W1-8			3.0		13.9			5.0	2 x 2 12 ga	14.6						1	4	2.25 x 2.25 12 ga				
2098+22 Lt	W1-8			3.0		13.9			5.0	2 x 2 12 ga	14.6						1	4	2.25 x 2.25 12 ga				
2100+22 Lt	W1-8			6.0		13.9			5.0	2 x 2 12 ga	14.6						1	4	2.25 x 2.25 12 ga				
2102+22 Lt	W1-8			6.0		13.9			5.0	2 x 2 12 ga	14.6						1	4	2.25 x 2.25 12 ga				

<p>This document was originally issued and sealed by Jefferey D. Daley, Registration Number PE-7865, on 2/2/2018 and is stored at the Walsh County Highway Department.</p>	<p>Sign Summary Perforated Tube</p>
--	---

STATE	PROJECT NO.	SECTION NO.	SHEET NO.
N.D.	HLC-5000(014)	110	3

Station / RP	Sign No.	Assembly No.	Flat Sheet For Signs		Sign Support Length				Vert Clearance FT	Support Size	Max Post Len LF	Sleeve Length				Sleeve Size	Anchor EA	Anchor LF	Anchor Size	Reset Sign Panel EA	Reset Sign Support EA	Break-Away EA	Comments
			IV SF	XI SF	1st LF	2nd LF	3rd LF	4th LF				1st LF	2nd LF	3rd LF	4th LF								
2104+22 Lt	W1-8			6.0	13.9				5.0	2 x 2 12 ga	14.6						1	4	2.25 x 2.25 12 ga				
2106+22 Lt	W1-8			6.0	13.9				5.0	2 x 2 12 ga	14.6						1	4	2.25 x 2.25 12 ga				
2108+22 Lt	W1-8			6.0	13.9				5.0	2 x 2 12 ga	14.6						1	4	2.25 x 2.25 12 ga				
2110+22 Lt	W1-8			3.0	13.9				5.0	2 x 2 12 ga	14.6						1	4	2.25 x 2.25 12 ga				
2116+00 Rt	W1-8			3.0	13.9				5.0	2 x 2 12 ga	14.6						1	4	2.25 x 2.25 12 ga				
2117+60 Rt	W1-8			6.0	13.9				5.0	2 x 2 12 ga	14.6						1	4	2.25 x 2.25 12 ga				
2119+20 Rt	W1-8			6.0	13.9				5.0	2 x 2 12 ga	14.6						1	4	2.25 x 2.25 12 ga				
2120+80 Rt	W1-8			3.0	13.9				5.0	2 x 2 12 ga	14.6						1	4	2.25 x 2.25 12 ga				
2121+80 Lt	W1-5L	53		8.5	16.3				5.0	2.5 x 2.5 12 ga	16.8	5.9			2.25 x 2.25 12 ga	1	4	3 x 3 7 ga				1	
3099+50 Rt	W1-4L	53		8.5	16.3				5.0	2.5 x 2.5 12 ga	16.8	5.9			2.25 x 2.25 12 ga	1	4	3 x 3 7 ga				1	
3100+50 Rt	W1-8			3.0	13.9				5.0	2 x 2 12 ga	14.6						1	4	2.25 x 2.25 12 ga				
3102+10 Rt	W1-8			6.0	13.9				5.0	2 x 2 12 ga	14.6						1	4	2.25 x 2.25 12 ga				
3103+70 Rt	W1-8			6.0	13.9				5.0	2 x 2 12 ga	14.6						1	4	2.25 x 2.25 12 ga				
3105+30 Rt	W1-8			6.0	13.9				5.0	2 x 2 12 ga	14.6						1	4	2.25 x 2.25 12 ga				
3106+90 Rt	W1-8			6.0	13.9				5.0	2 x 2 12 ga	14.6						1	4	2.25 x 2.25 12 ga				
3108+50 Rt	W1-8			6.0	13.9				5.0	2 x 2 12 ga	14.6						1	4	2.25 x 2.25 12 ga				
3110+10 Rt	W1-8			6.0	13.9				5.0	2 x 2 12 ga	14.6						1	4	2.25 x 2.25 12 ga				
3111+70 Rt	W1-8			6.0	13.9				5.0	2 x 2 12 ga	14.6						1	4	2.25 x 2.25 12 ga				
3113+30 Rt	W1-8			6.0	13.9				5.0	2 x 2 12 ga	14.6						1	4	2.25 x 2.25 12 ga				
3114+90 Rt	W1-8			6.0	13.9				5.0	2 x 2 12 ga	14.6						1	4	2.25 x 2.25 12 ga				
3116+50 Rt	W1-8			3.0	13.9				5.0	2 x 2 12 ga	14.6						1	4	2.25 x 2.25 12 ga				
3117+50 Lt	W1-4L	53		8.5	16.3				5.0	2.5 x 2.5 12 ga	16.8	5.9			2.25 x 2.25 12 ga	1	4	3 x 3 7 ga				1	
3701+97 Rt	W1-5L	53		8.5	16.3				5.0	2.5 x 2.5 12 ga	16.8	5.9			2.25 x 2.25 12 ga	1	4	3 x 3 7 ga				1	
3702+97 Lt	W1-8			3.0	13.9				5.0	2 x 2 12 ga	14.6						1	4	2.25 x 2.25 12 ga				
3704+57 Lt	W1-8			6.0	13.9				5.0	2 x 2 12 ga	14.6						1	4	2.25 x 2.25 12 ga				
3706+17 Lt	W1-8			6.0	13.9				5.0	2 x 2 12 ga	14.6						1	4	2.25 x 2.25 12 ga				
3707+77 Lt	W1-8			6.0	13.9				5.0	2 x 2 12 ga	14.6						1	4	2.25 x 2.25 12 ga				
3709+37 Lt	W1-8			6.0	13.9				5.0	2 x 2 12 ga	14.6						1	4	2.25 x 2.25 12 ga				
3710+97 Lt	W1-8			6.0	13.9				5.0	2 x 2 12 ga	14.6						1	4	2.25 x 2.25 12 ga				
3712+57 Lt	W1-8			3.0	13.9				5.0	2 x 2 12 ga	14.6						1	4	2.25 x 2.25 12 ga				
3713+38 Rt	W1-8			3.0	13.9				5.0	2 x 2 12 ga	14.6						1	4	2.25 x 2.25 12 ga				
3714+98 Rt	W1-8			6.0	13.9				5.0	2 x 2 12 ga	14.6						1	4	2.25 x 2.25 12 ga				
3716+58 Rt	W1-8			6.0	13.9				5.0	2 x 2 12 ga	14.6						1	4	2.25 x 2.25 12 ga				
3718+18 Rt	W1-8			6.0	13.9				5.0	2 x 2 12 ga	14.6						1	4	2.25 x 2.25 12 ga				
3719+78 Rt	W1-8			6.0	13.9				5.0	2 x 2 12 ga	14.6						1	4	2.25 x 2.25 12 ga				
3721+38 Rt	W1-8			6.0	13.9				5.0	2 x 2 12 ga	14.6						1	4	2.25 x 2.25 12 ga				
3722+98 Rt	W1-8			3.0	13.9				5.0	2 x 2 12 ga	14.6						1	4	2.25 x 2.25 12 ga				
3738+02 Rt	W1-8			3.0	13.9				5.0	2 x 2 12 ga	14.6						1	4	2.25 x 2.25 12 ga				
3739+62 Rt	W1-8			6.0	13.9				5.0	2 x 2 12 ga	14.6						1	4	2.25 x 2.25 12 ga				
3741+22 Rt	W1-8			6.0	13.9				5.0	2 x 2 12 ga	14.6						1	4	2.25 x 2.25 12 ga				
3742+82 Rt	W1-8			6.0	13.9				5.0	2 x 2 12 ga	14.6						1	4	2.25 x 2.25 12 ga				
3744+42 Rt	W1-8			3.0	13.9				5.0	2 x 2 12 ga	14.6						1	4	2.25 x 2.25 12 ga				
3747+91 Lt	W1-8			3.0	13.9				5.0	2 x 2 12 ga	14.6						1	4	2.25 x 2.25 12 ga				
3749+51 Lt	W1-8			6.0	13.9				5.0	2 x 2 12 ga	14.6						1	4	2.25 x 2.25 12 ga				

<p>This document was originally issued and sealed by Jefferey D. Daley, Registration Number PE-7865, on 2/2/2018 and is stored at the Walsh County Highway Department.</p>	<p>Sign Summary Perforated Tube</p>
--	---

STATE	PROJECT NO.	SECTION NO.	SHEET NO.
N.D.	HLC-5000(014)	110	4

Station / RP	Sign No.	Assembly No.	Flat Sheet For Signs		Sign Support Length				Vert Clearance FT	Support Size	Max Post Len LF	Sleeve Length				Sleeve Size	Anchor EA	Anchor LF	Anchor Size	Reset Sign Panel EA	Reset Sign Support EA	Break-Away EA	Comments
			IV SF	XI SF	1st LF	2nd LF	3rd LF	4th LF				1st LF	2nd LF	3rd LF	4th LF								
3751+11 Lt	W1-8			6.0		13.9			5.0	2 x 2 12 ga	14.6						1	4	2.25 x 2.25 12 ga				
3752+71 Lt	W1-8			3.0		13.9			5.0	2 x 2 12 ga	14.6						1	4	2.25 x 2.25 12 ga				
3753+71 Lt	W1-5L	53		8.5		16.3			5.0	2.5 x 2.5 12 ga	16.8	5.9			2.25 x 2.25 12 ga	1	4	3 x 3 7 ga				1	
4119+23 Rt	W1-8			3.0		14.4			5.0	2 x 2 12 ga	14.6					1	4	2.25 x 2.25 12 ga					
4121+23 Rt	W1-8			6.0		14.4			5.0	2 x 2 12 ga	14.6					1	4	2.25 x 2.25 12 ga					
4123+23 Rt	W1-8			6.0		14.4			5.0	2 x 2 12 ga	14.6					1	4	2.25 x 2.25 12 ga					
4125+23 Rt	W1-8			6.0		14.4			5.0	2 x 2 12 ga	14.6					1	4	2.25 x 2.25 12 ga					
4127+23 Rt	W1-8			6.0		14.4			5.0	2 x 2 12 ga	14.6					1	4	2.25 x 2.25 12 ga					
4129+23 Rt	W1-8			6.0		14.4			5.0	2 x 2 12 ga	14.6					1	4	2.25 x 2.25 12 ga					
4131+23 Rt	W1-8			6.0		14.4			5.0	2 x 2 12 ga	14.6					1	4	2.25 x 2.25 12 ga					
4133+23 Rt	W1-8			6.0		14.4			5.0	2 x 2 12 ga	14.6					1	4	2.25 x 2.25 12 ga					
4135+23 Rt	W1-8			6.0		14.4			5.0	2 x 2 12 ga	14.6					1	4	2.25 x 2.25 12 ga					
4137+23 Rt	W1-8			6.0		14.4			5.0	2 x 2 12 ga	14.6					1	4	2.25 x 2.25 12 ga					
4139+23 Rt	W1-8			3.0		14.4			5.0	2 x 2 12 ga	14.6					1	4	2.25 x 2.25 12 ga					
4142+92 Lt	W1-8			3.0		14.4			5.0	2 x 2 12 ga	14.6					1	4	2.25 x 2.25 12 ga					
4144+92 Lt	W1-8			6.0		14.4			5.0	2 x 2 12 ga	14.6					1	4	2.25 x 2.25 12 ga					
4146+92 Lt	W1-8			6.0		14.4			5.0	2 x 2 12 ga	14.6					1	4	2.25 x 2.25 12 ga					
4148+92 Lt	W1-8			6.0		14.4			5.0	2 x 2 12 ga	14.6					1	4	2.25 x 2.25 12 ga					
4150+92 Lt	W1-8			6.0		14.4			5.0	2 x 2 12 ga	14.6					1	4	2.25 x 2.25 12 ga					
4152+92 Lt	W1-8			6.0		14.4			5.0	2 x 2 12 ga	14.6					1	4	2.25 x 2.25 12 ga					
4154+92 Lt	W1-8			6.0		14.4			5.0	2 x 2 12 ga	14.6					1	4	2.25 x 2.25 12 ga					
4156+92 Lt	W1-8			6.0		14.4			5.0	2 x 2 12 ga	14.6					1	4	2.25 x 2.25 12 ga					
4158+92 Lt	W1-8			6.0		14.4			5.0	2 x 2 12 ga	14.6					1	4	2.25 x 2.25 12 ga					
4160+92 Lt	W1-8			6.0		14.4			5.0	2 x 2 12 ga	14.6					1	4	2.25 x 2.25 12 ga					
4162+92 Lt	W1-8			3.0		14.4			5.0	2 x 2 12 ga	14.6					1	4	2.25 x 2.25 12 ga					
4600+00 Rt	W3-1	19		6.3		15.2			5.0	2.25 x 2.25 12 ga	19.3	3.6			2 x 2 12 ga	1	4	3 x 3 7 ga					1
4605+00 Rt	M1-6	391		6.2		15.8			5.0	2.5 x 2.5 12 ga	15.9					1	4	3 x 3 7 ga					
4610+00 Rt	R1-1	1		5.2		14.5			5.0	2.5 x 2.5 10 ga	16.9					1	4	3 x 3 7 ga					1
4610+90 Lt	R1-1	1		5.2		14.0			5.0	2.5 x 2.5 10 ga	16.9					1	4	3 x 3 7 ga					1
4617+65 Lt	M1-6	391		6.2		15.3			5.0	2.5 x 2.5 12 ga	15.9					1	4	3 x 3 7 ga					
4619+90 Lt	W3-1	19		6.3		14.7			5.0	2.25 x 2.25 12 ga	19.3	3.1			2 x 2 12 ga	1	4	3 x 3 7 ga					1
4650+00 Rt	W3-1	19		6.3		14.7			5.0	2.25 x 2.25 12 ga	19.3	3.1			2 x 2 12 ga	1	4	3 x 3 7 ga					1
4654+00 Rt	M1-6	391		6.2		15.3			5.0	2.5 x 2.5 12 ga	15.9					1	4	3 x 3 7 ga					
4658+00 Rt	R1-1	1		5.2		14.0			5.0	2.5 x 2.5 10 ga	16.9					1	4	3 x 3 7 ga					1
4659+24 Lt	R1-1	1		5.2		14.0			5.0	2.5 x 2.5 10 ga	16.9					1	4	3 x 3 7 ga					1
4661+24 Lt	M1-6	391		6.2		15.3			5.0	2.5 x 2.5 12 ga	15.9					1	4	3 x 3 7 ga					
4663+24 Lt	W3-1	19		6.3		14.7			5.0	2.25 x 2.25 12 ga	19.3	3.1			2 x 2 12 ga	1	4	3 x 3 7 ga					1
Sub Total				0.0		902.2				Total	2,352.9					Total	664		0	0		20	
Grand Total				0.0		902.2				Total	2,352.9					Total	664	0	0	0		20	

<p>This document was originally issued and sealed by Jefferey D. Daley, Registration Number PE-7865, on 2/2/2018 and is stored at the Walsh County Highway Department.</p>	<p>Sign Summary Perforated Tube</p>
--	---