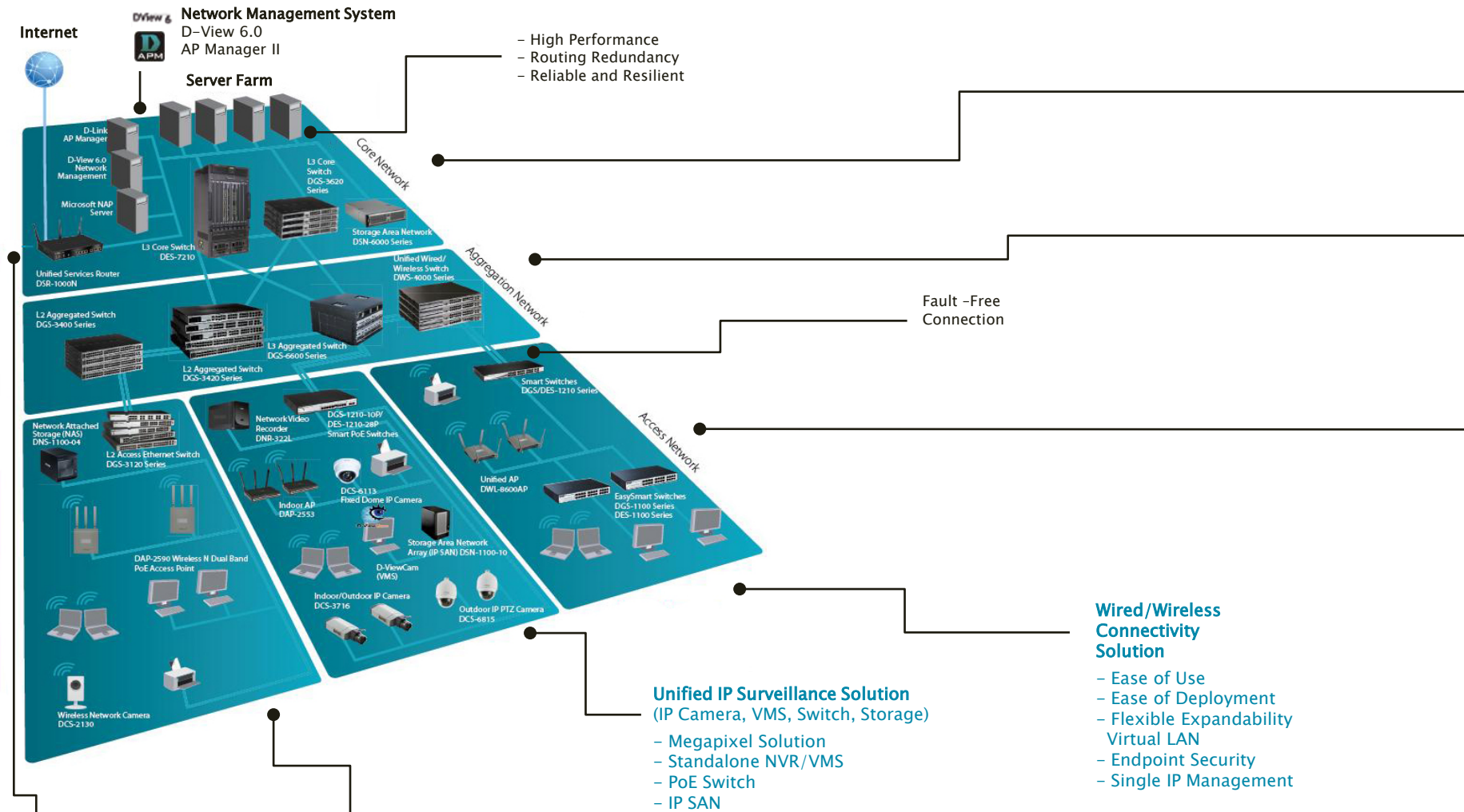


D-Link[®]
Building Networks for People



D-Link Switching Solution

Total Solution for Business



- Unified Services Router**
- Remote management
 - 3G support
 - Virtual Private Network (VPN)

- Data/Video/Audio Triple Play Application Solution**
- Policy-Based Traffic Prioritisation
 - Optimise the Quality of Multi-services

L3 Core Ethernet Switches
DGS-6600 Series
DGS-3620 Series

Storage
DSN-6000 Series

L2/L3 Aggregated Ethernet Switches
DGS-6600 Series
DGS-3420 Series

Unified Wireless Solutions
DWS-3160 Series
DWS-4000 Series

L2 Access Ethernet Switches
DGS-3120 Series

SmartPro Switches
DGS-1510 Series

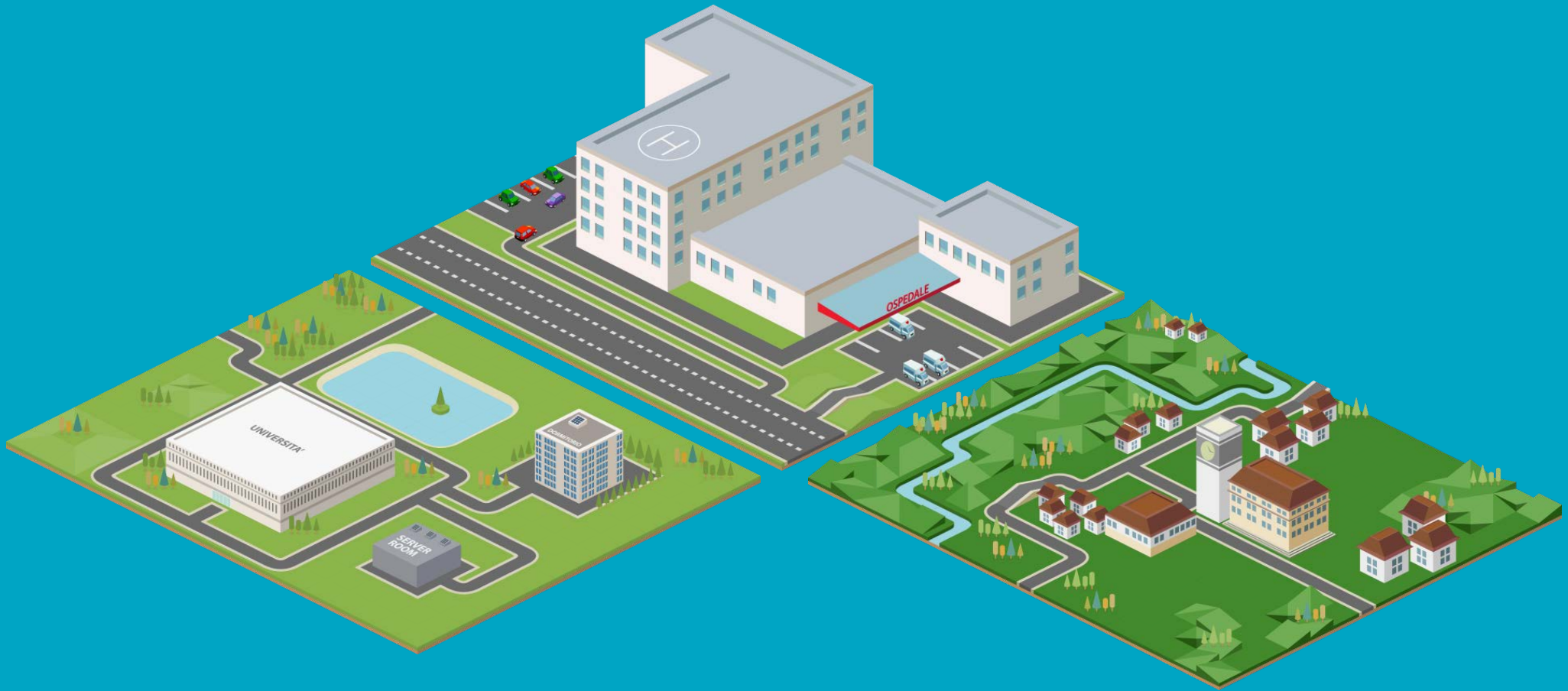
Smart Switches
DGS/DES-1210 Series

EasySmart Switches
DGS/DES-1100 Series

Storage
DNS-1100-04 NAS

Wireless Access
Unmanaged DAP-2553
Managed DWL-8600AP

IP Surveillance
Cameras DCS-3716
DCS-6815
NVR DNR-326



Switching: Case Studies

Lottomatica

Soluzioni attualmente in esercizio

- Soluzioni di accesso per agenzie di VLT (Video Lottery) con più di 3500 Switch configurabili e gestibili attraverso la piattaforma D-View Professional.

In progress progetti sulle filiali WW e progetti videosorveglianza



DES-3200



D-View

Fattori vincenti:

- Presenza costante sul Cliente con attività di certificazione e start-up installazione
- Sviluppi di funzionalità custom su Switch
- Sviluppi di funzionalità custom su D-View
- Supporto Operation per la configurazione degli Switch



Soluzioni attualmente in esercizio

- Soluzioni di accesso per agenzie Postali sparse sul territorio Italiano
- Le soluzioni D-Link presenti hanno superato le 3.500 unità



Famiglia DES-3200

Fattori vincenti:

- Presenza storica , installazione di apparati D-Link dall'anno 1998 con HUB 24 porte
- Sviluppi di funzionalità custom su Switch
- Supporto Operation per la configurazione degli Switch



Consip LAN4

D-Link è presente nell'attuale convenzione Consip

- Soluzioni switch dall'accesso di rete al core switch
- Soluzioni wireless (unica presente) con soluzioni per l'accesso e centralizzate tramite wireless switch
- Installazioni effettuate in ambienti diversificati come: Ospedali, comuni, scuole , ecc



Stazione Porta Susa

Soluzioni Switch:

- 4 DGS-3420-28TC
- 35 DES-1210-28P



DES-1210-28P



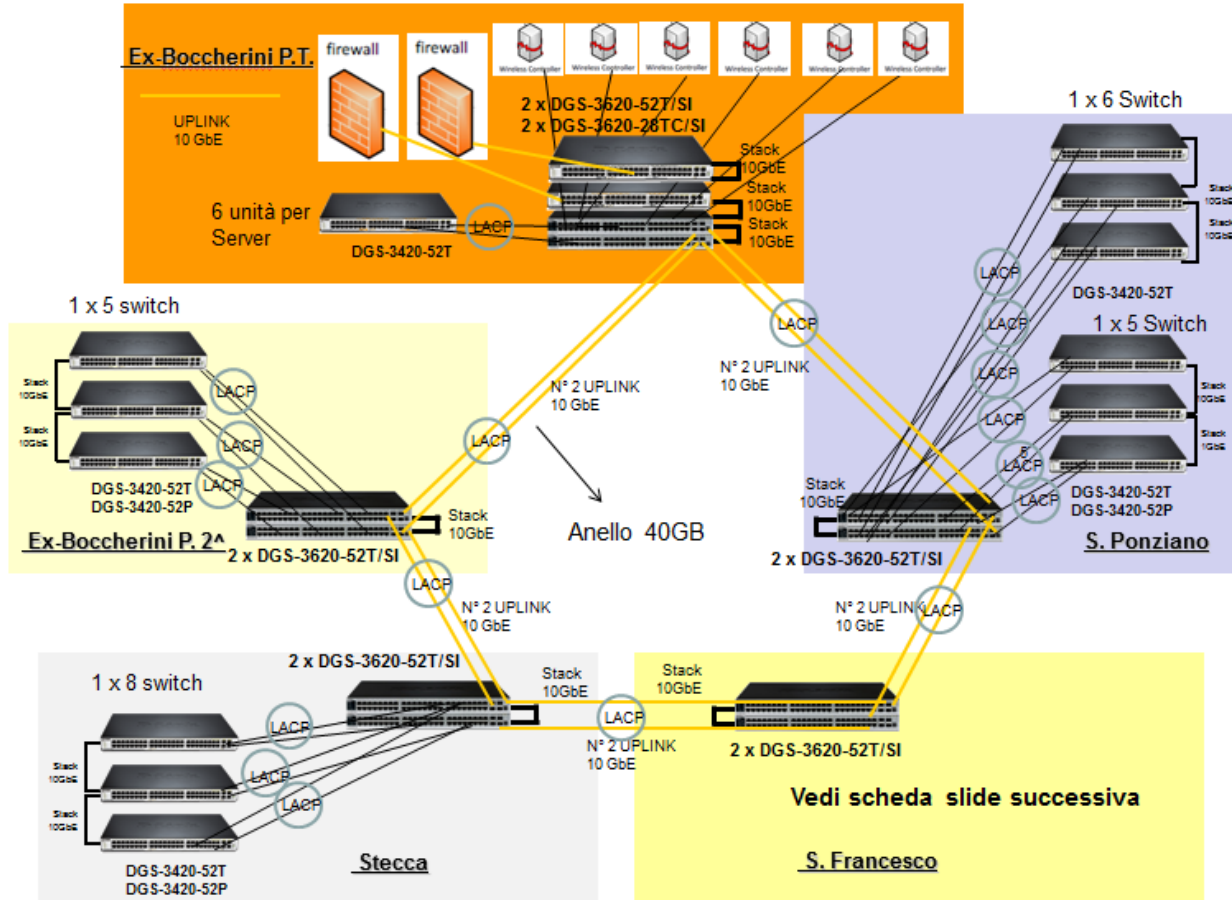
DGS-3420-28TC



Soluzione di IP Sorveglianza D-Link

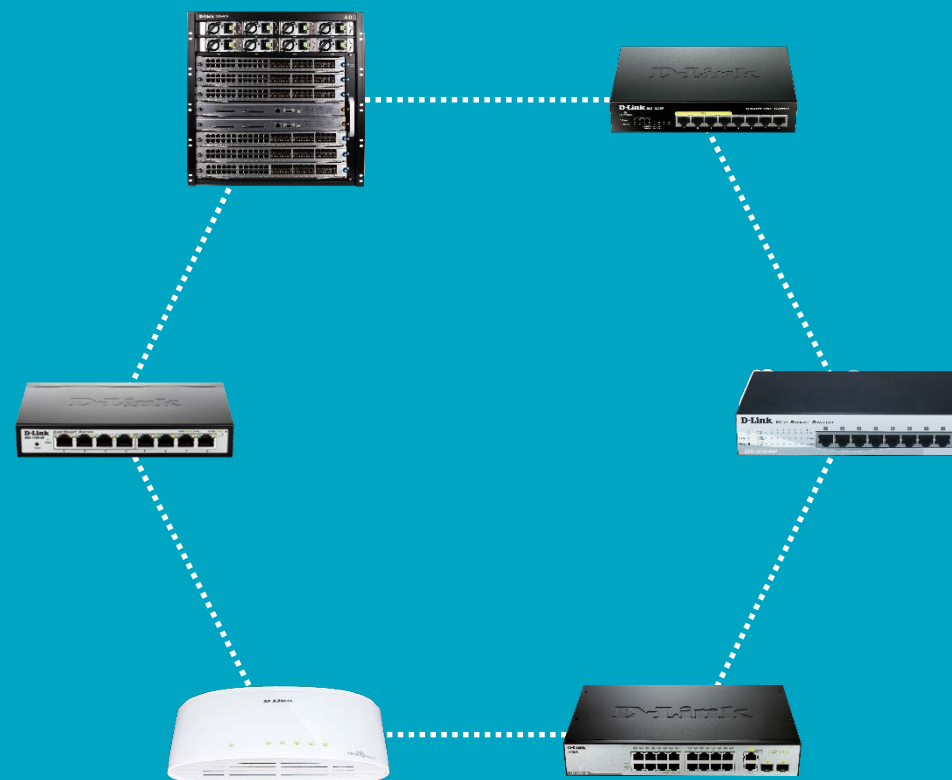
IMT Lucca (Institute for Advanced Studies Lucca)

Soluzioni: switch e wireless



Rete in fibra ottica 10 GB cittadina di core con ridondanza a tutti i livelli dal core alla periferia di rete.





Portafoglio prodotti



Switch High Level – Chassis

SWITCH HIGH LEVEL - CHASSIS

CLASSIFICAZIONE



DGS-6604



DGS-6608

2 CPU • 6 SLOT • HOTS WAP FAN TRAY

1 CPU • 3 SLOT • HOTSWAP • FANTRAY

FUNZIONALITA'

LEGENDA

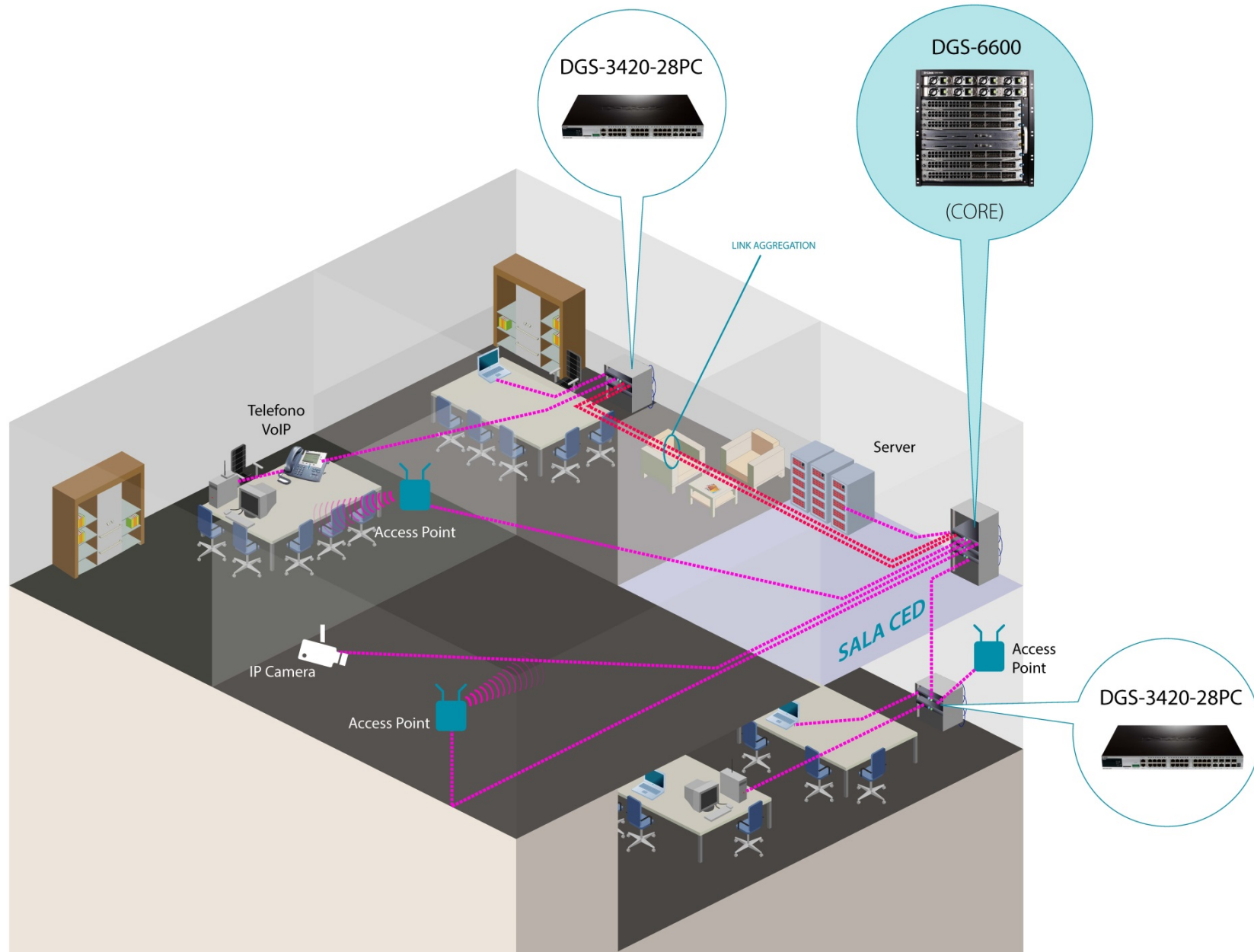
PoE 30W

Lo switch è Power Over Ethernet e alcune delle sue porte possono erogare fino a 30 Watt (per alimentare periferiche più potenti)

Full PoE

Lo switch è Power Over Ethernet e tutte le sue porte possono erogare fino a 30 Watt (per alimentare periferiche più potenti)

SWITCH HIGH LEVEL CHASSIS





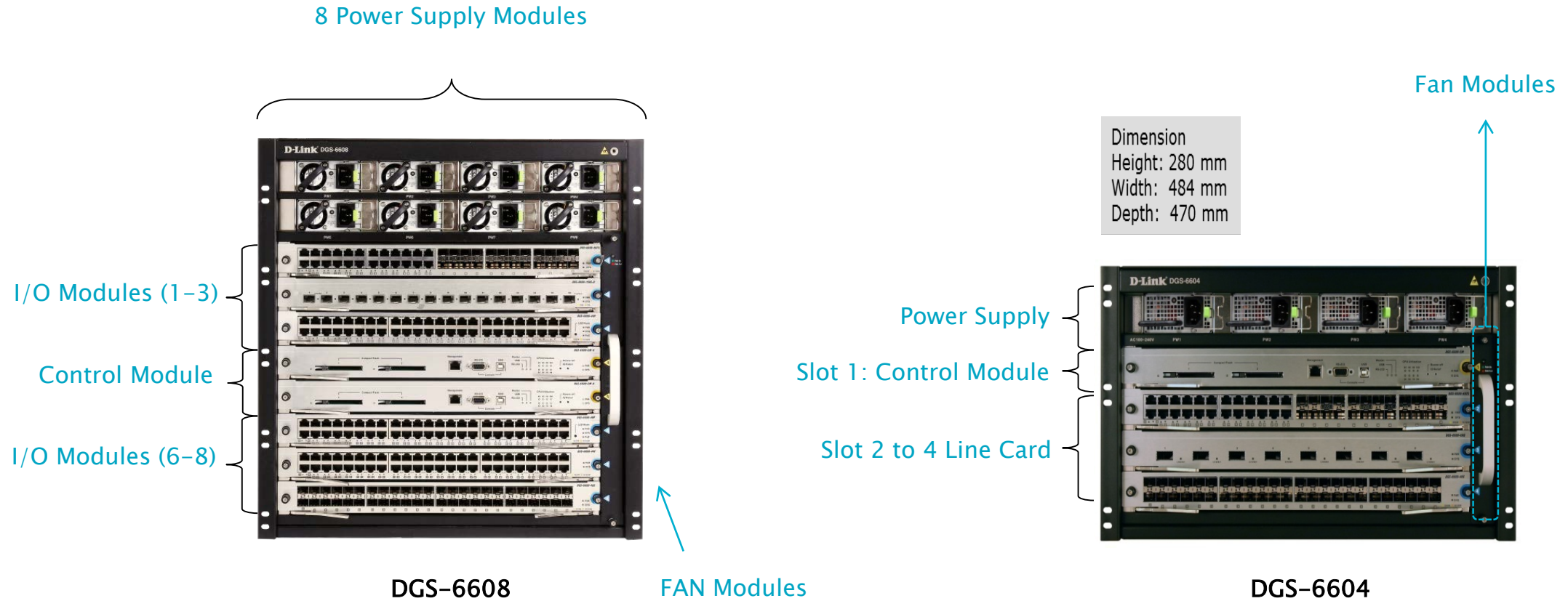
DGS-6600
Layer 3 Chassis Managed Gigabit 10G PoE

DGS-6600



	DGS-6604	DGS-6608
Chassis Slots	4	8
I/O Module Slots	3	6
Control Module Slots	1	2
Power Slots	4	8
Max. Switching Capacity	576 Gbps	1.152 Tbps
Max. Packet Forwarding Rate	428.57 Mpps	857.14 Mpps
Max. 10/100/1000M Ports	144	288
Max. 10/100/1000M PoE Ports	144	288
Max. Gigabit SFP Ports	144	288
Max. 10-Gigabit SFP+ Ports	48	96

DGS-6600 – Hardware Overview



DGS-6600 – Moduli porte

DGS-6600-48T provides 48x10/100/1000 Base-T ports



DGS-6600-48P 48 ports 10/100/1000Base-T PoE Module



DGS-6600-48S provides 48x GbE SFP module ports



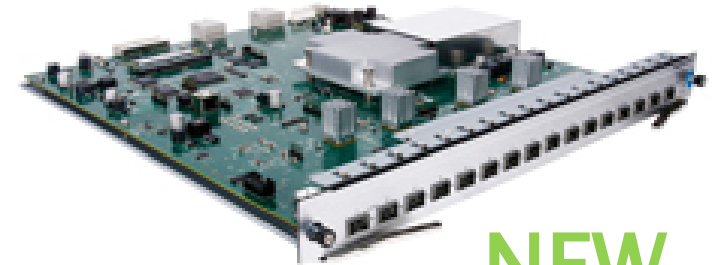
DGS-6600-48TS provides 24x 10/100/1000 Base-T ports and 24x SFP module ports.



DGS-6600-24SC2XS provides 12-ports 10/100/1000Base-T/SFP Combo & 12-port SFP with 2-port 10GE SFP+



DGS-6600-16XS-D provide 16-Port 10GE SFP+ with MPLS function



NEW

DGS-6600 – CPU e accessori

DGS-6600-CM-II: Modulo CPU per ridondanza



DGS-6600-PWR
AC Power Module

850Watt

- Supporta POE
- Installazione fino a 4 alimentatori



DEM-310GT
MiniGBIC 1000BASE-LX (LC)



DEM-311GT
MiniGBIC 1000BASE-SX (LC)



DEM-431XT
Minigbic SFP+ 10GBASE-SR fino a 300 metri (LC)



DEM-432XT
Minigbic SFP+ 10GBASE-LR fino a 10 Km (LC)



DGS-6600 – Caratteristiche software

DGS-6600 series provides comprehensive and enterprise-class features, including Layer 2 switching, Layer 3 routing, security, QoS, redundancy.

Network Foundation

- VRRP
- RIP/RIPng
- OSPF v2/v3
- BGP
- ECMP, WCMP
- Q-in-Q
- Policy-based Route
- BGP4+ (future)
- ERPS (Rapid Ethernet Ring Protection 50~200ms convergence)

Multiple-Service

- PIM-SM, PIM-DM
- Traffic Classification
- Advanced QoS
- Bandwidth Control (minimum granularity 64Kbps)

Security

Access Control

- 802.1x Access Control
- L2/3/4 Advanced ACL
- IP/MAC/Port Binding

Traffic Management

- Bandwidth Rate Limiting
- Port Mirroring
- Safeguard Engine

Secure Management

- SNMPv3 Management
- SSHv2 Secure Shell Client



Switch High Level – Managed

SWITCH HIGH LEVEL - MANAGED

CLASSIFICAZIONE



LEGENDA

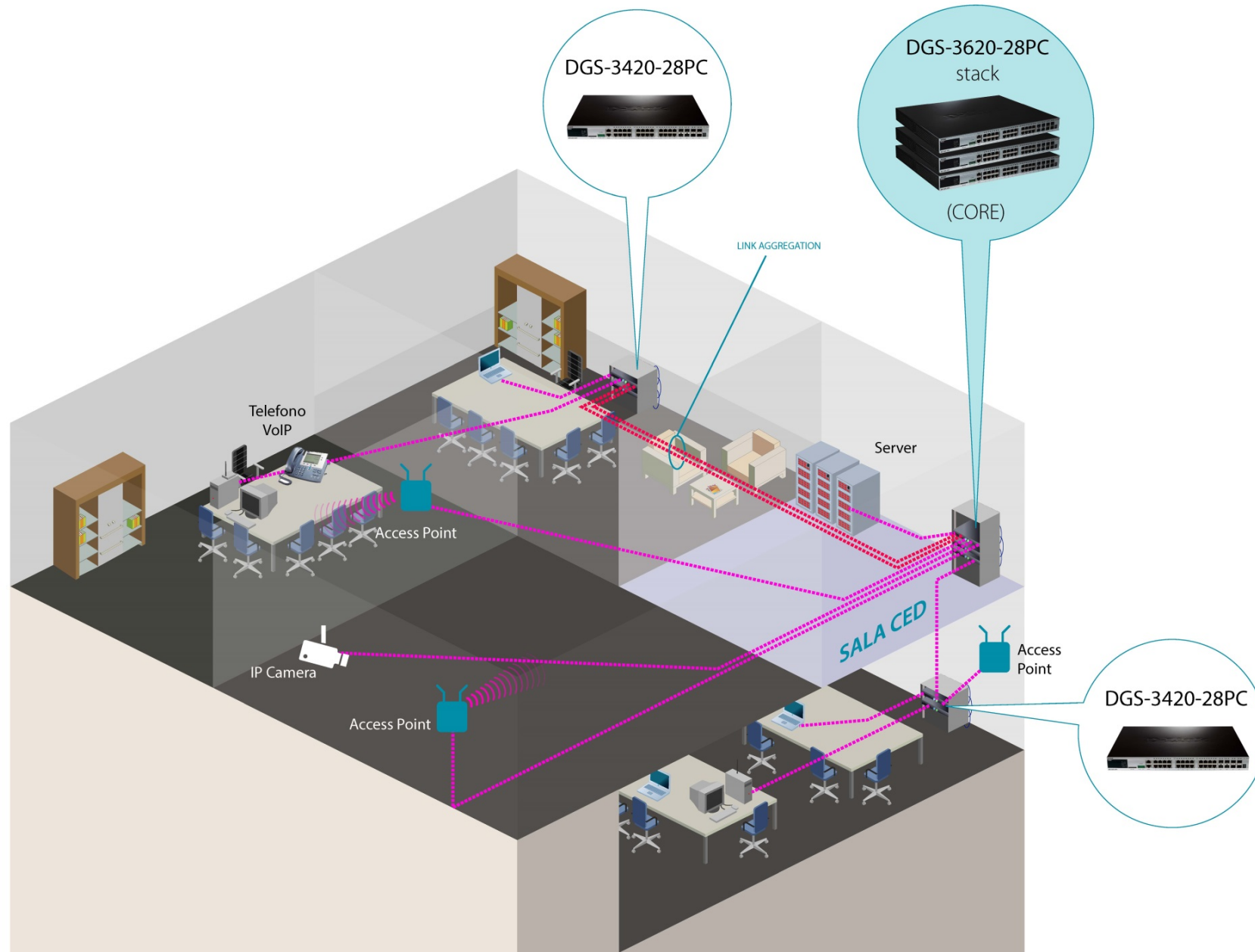
PoE 30W

Lo switch è Power Over Ethernet e alcune delle sue porte possono erogare fino a 30 Watt (per alimentare periferiche più potenti)

Full PoE

Lo switch è Power Over Ethernet e tutte le sue porte possono erogare fino a 30 Watt (per alimentare periferiche più potenti)

SWITCH HIGH LEVEL





DXS-3600
Layer 3 Managed Core Gigabit 10G SFP+

DXS-3600

	DXS-3600-16S	DXS-3600-32S
Port Configuration	8 fixed SFP+ with 1 expansion module	24 fixed SFP+ with 1 expansion module
Switching Capacity	480Gbps	960Gbps
Forwarding Rate	357Mpps	714Mpps



Expansion slot module:

	Ports	Model Name
Gigabit (10/100/1000)	8	DXS-3600-EM-8T
10GBASE-T	4	DXS-3600-EM-4XT
10G SFP+*	8	DXS-3600-EM-8XS
40G QSFP+*	4	DXS-3600-EM-4QXS
120G CXP Stacking*	2	DXS-3600-EM-STACK**



DXS-3600-EM-4XT



DXS-3600-EM-8T



DXS-3600-EM-8XS



DXS-3600-EM-STACK

*Coming Soon

**only 32S

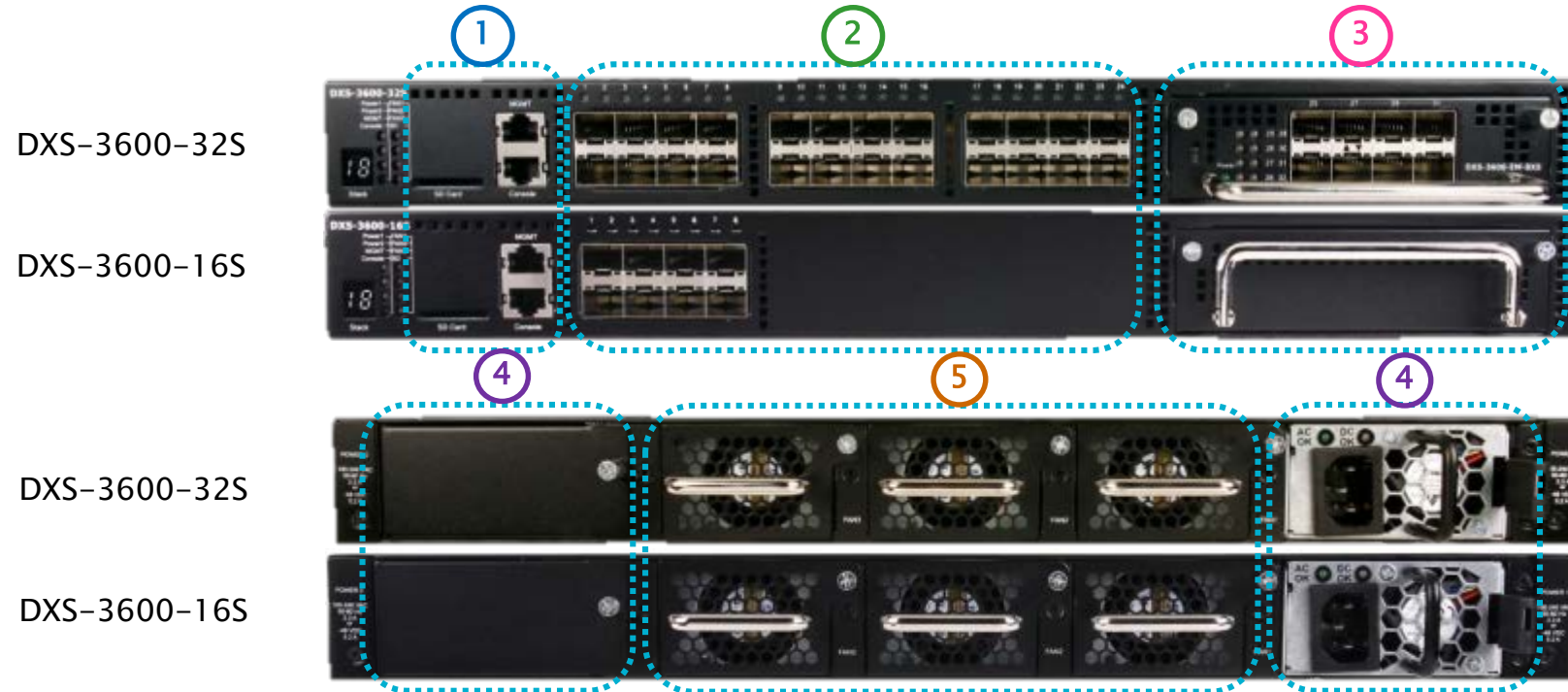
Only 32S

Power supply and fan:



Model	Description
DXS-3600-PWR-FB	A 300W AC power supply tray with front to back airflow
DXS-3600-FAN-FB	A fan tray with front to back airflow

DXS-3600 – Product overview – Mechanism & ID Design



- 1 ● 1 port 10/100/1000Mbps MGMT Port
- 1 RJ45 Console port
- 1 SD card Interface (max 32 Gb)

- 2 ● Fixed 24 SFP+ ports (32S)
- Fixed 8 SFP+ ports (16S)

- 3 ● Expansion Slot

- 4 ● Two AC hot-swappable, 1+1 redundancy and load sharing power supplies

- 5 ● Three hot-swappable, 2+1 redundancy fan trays

Dimension:
44mm(H) × 506mm(D) × 440mm(W)

DXS-3600 – Accessory – Transceiver



DEM-431XT (10G Multi-Mode)

●62.5μm	160 MHz-km	26m
●62.5μm	OM1 200 MHz-km	33m
●50μm	400 MHz-km	66m
●50μm	OM2 500 MHz-km	82m
●50μm	OM3 2000 MHz-km	300m



DEM-432XT (10G Single-Mode)

- 10KM



DEM-433XT (10G Single-Mode)

- 40KM

DEM-QX01Q-SR (40G QSFP+)

- 100M

Coming
Soon

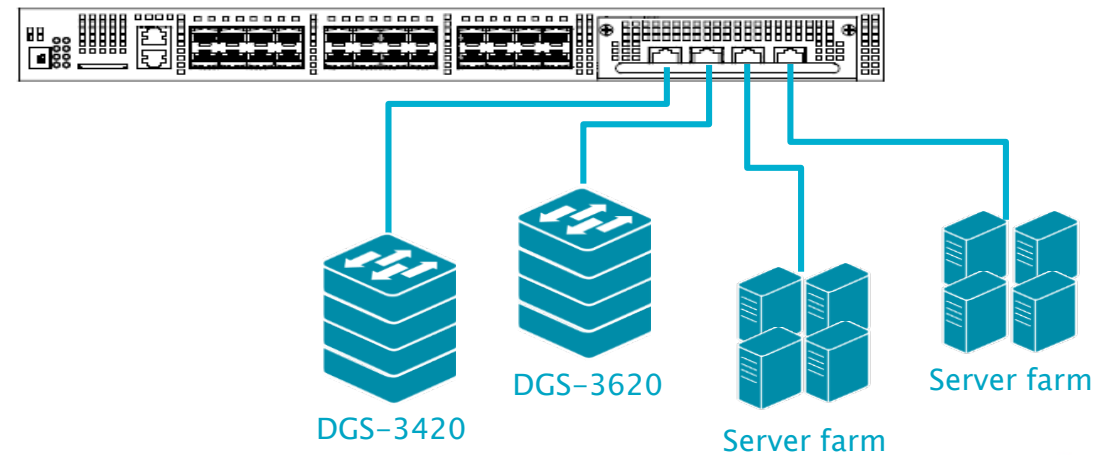
DXS-3600 – Accessory – Cables

Model	Description	Schedule
DEM-CB100S	SFP+ to SFP+ 1m Direct Attach Cable	Now
DEM-CB300S	SFP+ to SFP+ 3m Direct Attach Cable	Now
DEM-CB700S	SFP+ to SFP+ 7m Direct Attach Cable	Now
DEM-CB100QXS	QSFP+ to QSFP+ 1m Direct Attach Cable	Q3/2014
DEM-CB300QXS	QSFP+ to QSFP+ 3m Direct Attach Cable	Q3/2014
DEM-CB100QXS-4XS	QSFP+ to 4 x SFP+ 1m Direct Attach Cable	Q3/2014
DEM-CB50CXP	CXP to CXP 50cm Stacking Cable 120G	Q3/2014

QSFP+ to 4 x SFP+ Splitter Cable

DEM-CB100QXS-4XS splitter cable extends the max.

10G SFP+ port of DXS-3600-16S to 24, DXS-3600-32S to 40



DXS-3600 – versio overview – Upgrade License SI to EI

	Version SI (layer2+)	Version EI (layer3)
Market / Application	Data Center Top-of-Rack (ToR) Switch (Layer 2 functions with static Routing)	<ol style="list-style-type: none"> Aggregation switch for <ul style="list-style-type: none"> Enterprise Campus MPLS Network Core switch for <ul style="list-style-type: none"> SME SMB
Features	<ol style="list-style-type: none"> Data Center Bridging (DCB): <ul style="list-style-type: none"> 802.1Qbb PFC 802.1Qaz ETS 802.1Qau QCN DCBX L2/L3 Features: <ul style="list-style-type: none"> Q-in-Q, VLAN Translation, ERPS, Private VLAN, Static Route, ACL, Physical Stacking only for 32S version 	<ol style="list-style-type: none"> L3 Routing: <ul style="list-style-type: none"> VRRP, RIPv1/v2, OSPF, BGP L3 Multicasting: <ul style="list-style-type: none"> IGMPv1/v2/v3, PIM-DM/SM, DVMRPv3 L2 MPLS: <ul style="list-style-type: none"> LDP, VPWS, VPLS L3 VPN: <ul style="list-style-type: none"> MPLS/BGP L3 VPN, VRF-Lite
Upgrade License SI to EI code		<ol style="list-style-type: none"> DXS-3600-32S-SE-LIC DXS-3600-16S-SE-LIC

* future release



DGS-3620

Layer 3 Managed Stackable Gigabit Switch Family

DGS-3620



DGS-3620-28TC



DGS-3620-28SC



DGS-3620-28PC



DGS-3620-52T



DGS-3620-52P

- › **DGS-3620-28TC**
20 10/100/1000Base-T ports + 4 Combo 10/100/1000Base-T/SFP ports + 4 10GE SFP+ ports
- › **DGS-3620-28SC**
20 SFP ports + 4 Combo SFP/10/100/1000Base-T ports + 4 10GE SFP+ ports
- › **DGS-3620-28PC**
20 10/100/1000 PoE ports + 4 Combo 10/100/1000Base-T PoE/SFP ports + 4 10GE SFP+ ports
- › **DGS-3620-52T**
48 10/100/1000Base-T ports + 4 10GE SFP+ ports
- › **DGS-3620-52P**
48 10/100/1000Base-T PoE ports + 4 10GE SFP+ ports

Common features

- **Two Version:** SI (standard Image) and EI (Enhanced Image with upgrade license) with BGP /BGP+ , OSPF v3 and RIPng, etc
- **Expansion:** Up to 12-unit Physical Stacking with ports 10 GE SFP+. Single IP Management (SIM) up to 32 units.
- **Data transfer/Prioritisation:** Layer3 switching, IPv4 and IPv6 static routing, RIP v1 and 2, OSPF v2, Jumbo Frame, 802.1Q VLAN, Guest Vlan, Double Vlan, IP Multicast support, IGMP Snooping, multi-Layer (2-4) QoS/CoS, bandwidth control
- **Redundancy:** 802.3ad Link Aggregation, 802.1w/802.1s Rapid and Multiple Spanning Tree, optional external power supply
- **Security:** 802.1X access control, multi-layer Access Control Lists (ACLs), RADIUS/TACACS+ authentication, SSH/SSL, D-Link Safeguard Engine
- **PoE:** PoE+ Support (802.3at, 30 Watt & 802.3af, 15,4 Watt)
- **Management:** SNMP v1, v2c, v3, RMON, console port, TELNET, web management, Port Mirroring
- Modules:** DEM-310GT, DEM-311GT, DEM-431XT, DEM-432XT, DEM-CB100S (stacking cable) , DEM-CB300S (stacking cable)
- **Redundant Power Supply:** DPS-500, DPS-700 (for PoE switch), DPS-800, DPS-900
- **External Alarm Port, Smart Fan, D-Link Green support** with Time based PoE

DGS-3620 – Features firmware SI (Standard Image)

Expansion	Hardware Stacking (12 units max for 40G stacking bandwidth) with 10GE SFP+ ports. Stacking cable is not provide with the switch; code is DEM-CB100S (1 meter) and DEM-CB300S (3 meters). Single IP-Management (SIM), manage up to 32 devices via one single IP address.
Data transfer/Prioritisation	Layer3 Switching, L3 IPv4 and IPv6 Static Routing, RIP v1/v2 , OSPF v2, Jumbo Frame, 802.1Q VLAN, Guest VLAN, Double VLAN ,IP Multicast Support, IGMP Snooping, Multi-Layer (2-4) QoS/CoS IEEE 802.1p Priority Queues , IEEE 802.3x Flow Control, Bandwidth Control , D-Link Safeguard Engine.
Redundancy	802.3ad Link Aggregation, 802.1w/802.1s Rapid and Multiple Spanning Tree, Loopback detection, VRRP, ERPS (Ethernet Ring Protection Switching) , Optional external power supply.
Security	802.1x Port & MAC based Access Control, Multi-Layer Access Control Lists , RADIUS/TACACS+ Authentication, SSH/SSL, D-Link Safeguard Engine, Traffic segmentation , IP Mac Port Binding.
PoE	PoE+ Support (802.3at, 30 Watt & 802.3af, 15,4 Watt). ✓External RPS PoE support with DPS-700 in two method: <input type="checkbox"/> Redundant mode: When internal power fails, external power will start to feed the power for the whole system <input type="checkbox"/> Expansion mode: When RPS is inserted with expansion mode, the PoE power budget will expand to 740W
Green Ethernet	D-Link Green Ethernet Technology. Power Saving of the ports and Time based POE (for POE units)
Others	• Smart Fan , External Alarm Port ✓Alarm port to attach a General I/O Terminal block. It can give better security protection. ✓The alarm sends a trap/log from detections like door-opening, smoke gauge or the temperature sensor alarm. One output port can activate an external air-conditioner or a fan
Management	SNMP v1, v2c, v3, RMON, Console Port, TELNET, Web Management, Port Mirroring, LLDP/LLDP Med. External SD card (Flexible storage choice to keep configuration file, boot image and syslog)
Modules	DEM-211, DEM-210, DEM-310GT, DEM-311GT, DEM-431XT, DEM-432XT, DPS-500 (Ext. Power Supply) , DPS-700 (Ext. Power Supply PoE), DEM-CB100S / 300S (stacking cable)

DGS-3620 – Features firmware EI (Enhanced Image) with license upgrade

Enhanced Function

In addition to all SI features, the Enhanced Image Feature includes :

- **Layer 3 Features**
IPv6 Tunneling
- **Layer 3 Routing**
BGP, RIPng, OSPFv3 and BGP+
- **Layer 3 Multicasting**
PIM SM for IPv6, DVMRPv3
- **OAM**
Cable Diagnostics and Cable Fault Management(CFM)
- **MPLS/VPLS**
- **Standard Compliance**
MEF Certification

Licenses upgrade SI to EI

DGS-3620-28PC-SE-LIC

DGS-3620-28PC Standard to Enhanced Image Upgrade License

DGS-3620-28SC-SE-LIC

DGS-3620-28SC Standard to Enhanced Image Upgrade License

DGS-3620-28TC-SE-LIC

DGS-3620-28TC Standard to Enhanced Image Upgrade License

DGS-3620-52P-SE-LIC

DGS-3620-52P Standard to Enhanced Image Upgrade License

DGS-3620-52T-SE-LIC

DGS-3620-52T Standard to Enhanced Image Upgrade License



DGS-3420

Layer 2+ Managed Stackable Gigabit Switch Family

DGS-3420



DGS-3420-28TC



DGS-3420-28SC



DGS-3420-52T



DGS-3420-52P

- **DGS-3420-28TC**
24-Port 10/100/1000Mbps L2 Management Switch with 4-Port Combo SFP and 4-Port 10GE SFP+
- **DGS-3420-28SC**
20-Port SFP L2 Management Switch with 4 Combo 10/100/1000Base-T/SFP and 4-Port 10GE SFP+
- **DGS-3420-28PC**
24-Port POE 10/100/1000Mbps L2 Management Switch with 4-Port Combo SFP and 4-Port 10GE SFP+
- **DGS-3420-52T**
48-Port 10/100/1000Mbps L2 Management Switch with 4-Port 10GE SFP+
- **DGS-3420-52P**
48-Port POE 10/100/1000Mbps L2 Management Switch with 4-Port 10GE SFP+

Common features

- **Expansion:** Up to 12-unit Physical Stacking with ports 10GE SFP+ . Single IP Management (SIM) up to 32 units.
- **Data transfer/Prioritisation:** Layer2 switching,
 - IPv4 and IPv6 static routing, Jumbo Frame, 802.1Q
 - VLAN, Guest Vlan, Double Vlan, GARP/GVRP, IP Multicast support, IGMP Snooping, multi-Layer (2-4) QoS/CoS, bandwidth control
- **Redundancy:** 802.3ad Link Aggregation,
 - 802.1w/802.1s Rapid and Multiple Spanning Tree,
 - optional external power supply
- **Security:** 802.1X access control, multi-layer Access
 - Control Lists (ACLs), RADIUS/TACACS+ authentication,
 - SSH/SSL, D-Link Safeguard Engine
- **PoE:** PoE+ Support (802.3at, 30 Watt & 802.3af, 15,4 Watt)
- **Management:** SNMP v1, v2c, v3, RMON, console port,
 - TELNET, web management, Port Mirroring
- **Modules:** DEM-310GT, DEM-311GT, DEM-431XT, DEM-432XT, DEM-CB100S (1m stacking cable) , DEM-CB300S (3m stacking cable)
- **Redundant Power Supply:** DPS-500, DPS-700 (for PoE switch), DPS-800, DPS-900
- **External Alarm Port, Smart Fan, D-Link Green support with Time Based PoE**

DGS-3420 – Features

Expansion	<ul style="list-style-type: none">• Hardware Stacking (12 units max for 40G stacking bandwidth) with 10GE SFP+ ports. Stacking cable is not provide with the switch; code is DEM-CB100S (1 meter) and DEM-CB300s (3 meters).• Single IP-Management (SIM), manage up to 32 devices via one single IP address.
Data transfer/Prioritisation	<ul style="list-style-type: none">• Layer2 Switching, L3 IPv4 and IPv6 Static Routing, RIP v1/v2 e RIPng, Jumbo Frame, 802.1Q VLAN, IP Multicast Support, IGMP Snooping, Multi-Layer (2-4) QoS/CoS IEEE 802.1p Priority Queues , IEEE 802.3x Flow Control, Bandwidth Control , D-Link Safeguard Engine.
Redundancy	<ul style="list-style-type: none">• 802.3ad Link Aggregation, 802.1w/802.1s Rapid and Multiple Spanning Tree, Loopback detection, VRRP, ERPS (Ethernet Ring Protection Switching) , Optional external power supply.
Security	<ul style="list-style-type: none">• 802.1x Port & MAC based Access Control, Multi-Layer Access Control Lists , RADIUS/TACACS+ Authentication, SSH/SSL, D-Link Safeguard Engine, Traffic segmentation , IP Mac Port Binding.
PoE	<ul style="list-style-type: none">• PoE+ Support (802.3at, 30 Watt & 802.3af, 15,4 Watt).<ul style="list-style-type: none">• External RPS PoE support with DPS-700 in two method:<ul style="list-style-type: none">• Redundant mode: When internal power fails, external power will start to feed the power for the whole system• Expansion mode: When RPS is inserted with expansion mode, the PoE power budget will expand to 740W
Green Ethernet	<ul style="list-style-type: none">• D-Link Green Ethernet Technology. Power Saving of the ports and Time based POE (for POE units)
Others	<ul style="list-style-type: none">• Smart Fan , External Alarm Port<ul style="list-style-type: none">• Alarm port to attach a General I/O Terminal block. It can give better security protection.• The alarm sends a trap/log from detections like door-opening, smoke gauge or the temperature sensor alarm. One output port can activate an external air-conditioner or a fan
Management	<ul style="list-style-type: none">• SNMP v1, v2c, v3, RMON, Console Port, TELNET, Web Management, Port Mirroring, LLDP/LLDP Med.• External SD card (Flexible storage choice to keep configuration file, boot image and syslog)
Modules	<ul style="list-style-type: none">• DEM-211, DEM-210, DEM-310GT, DEM-311GT, DEM-431XT, DEM-432XT, DPS-500 (Ext. Power Supply) , DPS-700 (Ext. Power Supply PoE), DEM-CB100S / 300s (stacking cable)

10G SFP+ Interface for DGS-3420 and DGS-3620

- **SFP+ Transceivers for the Switch that support also SFP+**
 - DEM-431XT/DEM-431XT-DD:10GBASE-SR (300 meters)
 - DEM-432XT/DEM-432XT-DD:10GBASE-LR (10 km)
 - DEM-433XT/DEM-433XT-DD:10GBASE-ER (40 km)

DD > Transceiver with DDM , Digital Diagnostics Monitoring
- **SFP+ Direct Attached Cables (stackable cable for DGS-3420/DGS-3620)**
 - DEM-CB100S (1 meter)
 - DEM-CB300S (3 meter)
 - DEM-CB700S (7 meter)



Switch Medium Level – Managed

SWITCH MEDIUM LEVEL - MANAGED

CLASSIFICAZIONE



DES-3200-10



DES-3200-28



DES-3200-52



DGS-3120-24TC



DGS-3120-48TC



DES-3200-18



DES-3200-28P



DES-3200-52P



DGS-3120-24PC



DGS-3120-48PC



DGS-3120-24SC

ERPS • STACKING FISICO • LAYER 3 LITE

VIRTUAL STACKING

FAST ETHERNET

GIGABIT

FUNZIONALITA'

LEGENDA

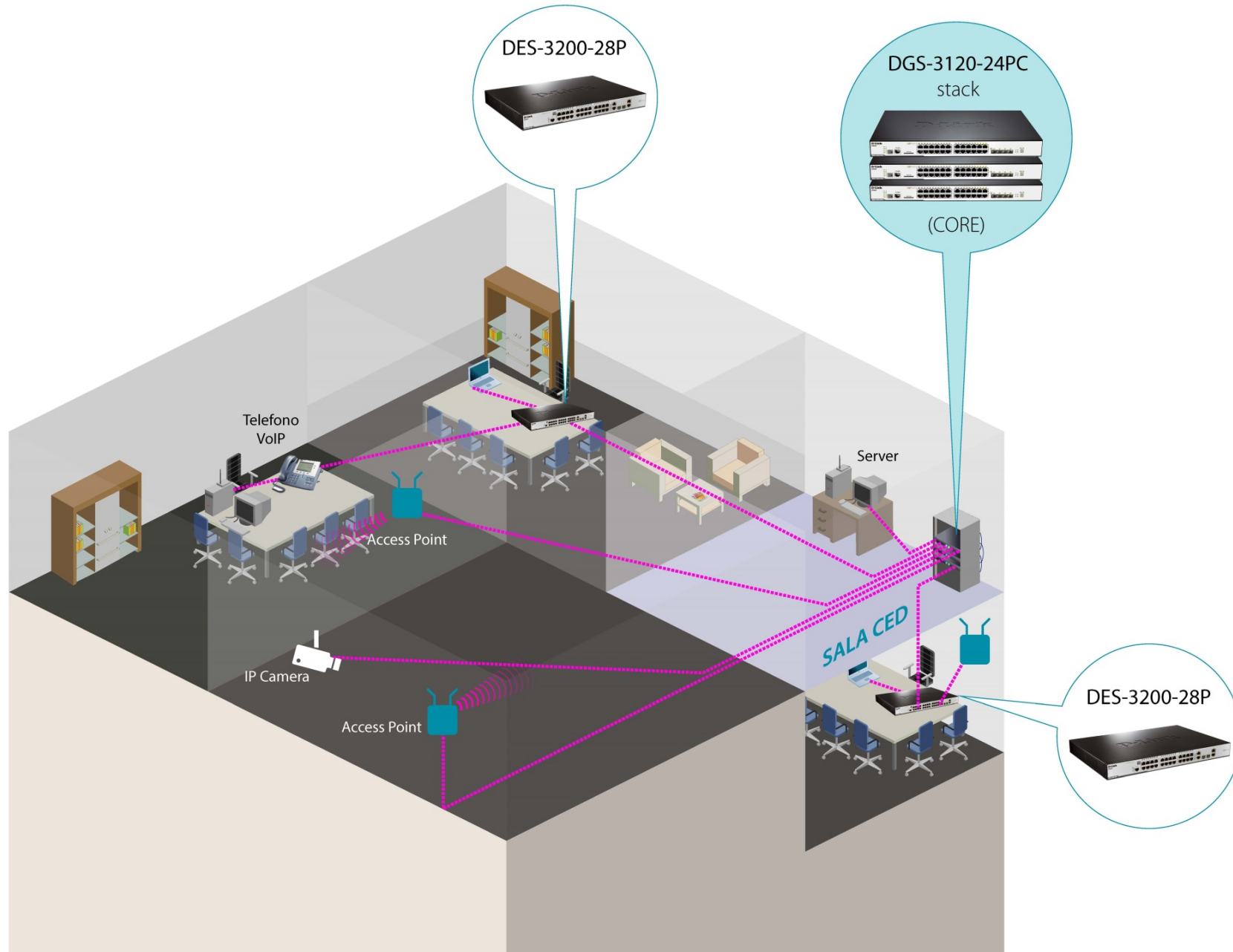
PoE 30W

Lo switch è Power Over Ethernet e alcune delle sue porte possono erogare fino a 30 Watt (per alimentare periferiche più potenti)

Full PoE

Lo switch è Power Over Ethernet e tutte le sue porte possono erogare fino a 30 Watt (per alimentare periferiche più potenti)

SWITCH MEDIUM LEVEL





DGS-3120

Layer 2 Managed Stackable Gigabit Switch Family

DGS-3120



DGS-3120-24TC
DGS-3120-24PC (PoE)

24-port Layer 2 Gigabit Ethernet stackable switch

- 20 10/100/1000BASE-T Ports
- 4 Combo SFP for Fiber Gigabit or Gigabit copper
- 2 CX4 Stacking Ports 10GB
- Switch Fabric: 88 Gbps
- 802.3af and 802.3at (PoE Plus) Support



DGS-3120-48TC
DGS-3120-48PC(PoE)

48-port Layer 2 Gigabit Ethernet stackable switch

- 44 10/100/1000BASE-T Ports
- 4 Combo SFP for Fiber Gigabit or Gigabit copper
- 2 CX4 Stacking Ports 10GB
- Switch Fabric: 136 Gbps
- 802.3af and 802.3at (PoE Plus) Support



DGS-3120-24SC

16-port SFP + 8 ports combo copper /SFP Layer 2 Gigabit Ethernet stackable switch

- 8 Combo SFP for Fiber Gigabit or Gigabit copper
- 16 SFP for Fiber Gigabit
- 2 Cx4 Stacking Ports 10GB
- Switch Fabric: 88 Gbps

Common features

- Expansion: Up to 6 Units (288 Gigabit Ports) per Stack, Up to 40 Gbps Full-Duplex Stacking Bandwidth
- Redundancy: 802.1D, 802.1w /802.1s Spanning Tree, 802.3ad Link Aggregation ; ERPS, Loopback detection
- Security: 802.1q Vlan and Asymmetric Vlan, Voice Vlan, Port Security, ACL, 802.1X Port-Based/MAC-Based Access Control, 802.1X Guest VLAN, Traffic Segmentation, 256 VLAN Groups, D-Link Safeguard Engine, DHCP Relay, ARP Spoofing Prevention,
- Traffic Monitoring/Bandwidth Control: Port Mirroring, Granular Bandwidth Control (Down to 64Kbps Per Port), Broadcast Storm Control, QoS, Voice Vlan, static Routing
- Management: Web-Based GUI, CLI, Telnet Client/Server SNMP v1, v2c, v3 & RMON v1, RADIUS/TACACS+ Authentication for Management Access, SSH v1, v2, SSL v3.
- D-Link Green Ethernet , Smart Fan and External SD card
- Modules: DEM-310GT, DEM-311GT, DEM-314GT, DEM-315GT, DEM-210, DEM-211
- Redundant Power Supply: DPS-500 (DGS-3120-48TC) , DPS-200 (DGS-3120-24xx) and DPS-700 (PoE version)

DGS-3120 – Features

Expansion	<ul style="list-style-type: none">• Hardware Stacking (6 units max for 40G stacking bandwidth) with embedded CX4 interfaces. Stacking cable is not provide with the switch; code is DEM-CB50 (50 cm).• Single IP-Management (SIM), manage up to 32 devices via one single IP address.
Data transfer/Prioritisation	<ul style="list-style-type: none">• Layer2 Switching, L3 IPv4 and IPv6 Static Routing (EI image), Jumbo Frame, 802.1Q VLAN, Double Vlan (EI image) Voice Vlan, IP Multicast Support, IGMP Snooping, Multi-Layer (2-4) QoS/CoS IEEE 802.1p Priority Queues , IEEE 802.3x Flow Control, Bandwidth Control , D-Link Safeguard Engine.
Redundancy	<ul style="list-style-type: none">• 802.3ad Link Aggregation, 802.1w/802.1s Rapid and Multiple Spanning Tree, Loopback detection, ERPS (Ethernet Ring Protection Switching) for EI image , Optional external power supply.
Security	<ul style="list-style-type: none">• 802.1x Port & MAC based Access Control, Multi-Layer Access Control Lists , RADIUS/TACACS+ Authentication, SSH/SSL, D-Link Safeguard Engine, Traffic segmentation , IP Mac Port Binding.
PoE	<ul style="list-style-type: none">• PoE+ Support (802.3at, 30 Watt & 802.3af, 15,4 Watt).<ul style="list-style-type: none">• External RPS PoE support with DPS-700 in two method:<ul style="list-style-type: none">• Redundant mode: When internal power fails, external power will start to feed the power for the whole system• Expansion mode: When RPS is inserted with expansion mode, the PoE power budget will expand to 740W
Green Ethernet	<ul style="list-style-type: none">• D-Link Green Ethernet Technology. Power Saving of the ports and Time based POE (for POE units)
Others	<ul style="list-style-type: none">• Smart Fan
Management	<ul style="list-style-type: none">• SNMP v1, v2c, v3, RMON, Console Port, TELNET, Web Management, Port Mirroring, LLDP.• External SD card (Flexible storage choice to keep configuration file, boot image and syslog)
Modules	<ul style="list-style-type: none">• DEM-211, DEM-210, DEM-310GT, DEM-311GT, DPS-200 (Ext. Power Supply), DPS-500 (Ext. Power Supply) , DPS-700 (Ext. Power Supply PoE), DEM-CB50 (stacking cable)

DGS-3120 – Features

Two version firmware:

Standard Image (SI)

Enhanced Image (EI) with IMPB (IP-MAC-Port Binding) , IPv6 features, Static Route , Egress ACL, etc

In addition to all SI features, the Enhanced Image Feature includes :

- **Layer 2 Features**
ERPS
- **VLAN**
Double VLAN(Q-in-Q)
- **Layer 3 Features**
Static Route, ARP Proxy, IPv6 ND
- **ACL**
add Egress ACL
- **Security**
IMPB
- **AAA**
WAC(IPv6 address), Japan-WAC(IPv6 address), Compound Authentication
- **Management**
IPv6 support for Web-GUI/Telnet/TFTP/SNMP/Syslog/ICMPv6, sFlowv5, PPPoE Circuit-ID Tag Insertion
- **OAM**
802.3ah Ethernet Link OAM , Cable Fault Management(CFM), ITU-T Y.1731, Optical Transceiver Digital Diagnostic Monitoring (DDM)
- **MIB**
IPv6 MIB



DES-3200

Layer 2 Managed Switch Family

DES-3200



DES-3200-10
DES-3200-18

10-18 port Layer 2 Ethernet switch

- DES-3200-10: 8 10/100 +1 SFP+ 1 Combo 1000Base-T/SFP
- DES-3200-18: 16 10/100Mbps + 2 Combo 1000BaseT/SFP



DES-3200-28
DES-3200-28P (PoE)

24-port Layer 2 Ethernet switch

- DES-3200-28: 24 10/100 +2 SFP+ 2 Combo 1000Base-T/SFP
- DES-3200-28P : 24 10/100 +2 1000Base-T + 2 Combo 1000Base-T/SFP
- Switch fabric: 12.8 Gbps
- IEEE 802.3af (PoE standard) for DES-3200-28P, IEEE 802.3at for first eight ports.



DES-3200-52
DES-3200-52P (PoE)

48-port Layer 2 Ethernet switch

- DES-3200-52: 48 10/100 +2 SFP+ 2 Combo 1000Base-T/SFP
- DES-3200-52P : 48 10/100 +2 1000Base-T + 2 Combo 1000Base-T/SFP
- Switch fabric: 17.6 Gbps
- IEEE 802.3af (PoE standard) for DES-3200-28P, IEEE 802.3at for first eight ports.

Common features

- Expansion: Single IP Management (SIM) up to 32 units
- Redundancy: 802.1D, 802.1w and 802.1s Spanning Tree, 802.3ad Link Aggregation (Port Trunks), Loopback detection v2.0, Jumbo Frame to 12 K, Cable Diagnostics , LLDP. LLDP-MED (future firmware)
- Security: 802.1q Vlan and Asymmetric Vlan, ISM Vlan, Voice Vlan, Double VLAN (Q-in-Q), Port Security, ACL, 802.1X Port-Based/MAC-Based Access Control, 802.1X Guest VLAN, Traffic Segmentation, 4K VLAN Groups, CPU Interface Filtering, D-Link Safeguard Engine, IP-MAC-Port Binding , DoS attack Prevention
- Traffic Monitoring/Bandwidth Control: Port Mirroring, Granular Bandwidth Control (Down to 64Kbps Per Port), Broadcast Storm Control, MLD Snooping v1 and v2 awareness
- Management: Web-Based GUI, CLI, Telnet Client/Server SNMP v1, v2c, v3 & RMON v1, v2, RADIUS/TACACS+ Authentication for Management Access, SSH v1, v2, SSL v3, DHCP Relay Option 82, IPv6 support
- Modules: DEM-310GT, DEM-311GT, DEM-314GT, DEM-315GT, DEM-210, DEM-211
- Green Ethernet (Power-saving function) e Time based PoE



Switch Entry Level – Smart & SmartPro

Soluzioni Smart D-Link



Smart Pro
(esempio serie DGS-1510)

Le soluzioni Smart Pro sono al top delle soluzioni WEB Switch e sono Layer 2+ con Routing statico, stacking e 10GB



Smart III
(esempio serie DES-1210 e serie DGS-1210)

Le soluzioni Smart III hanno un set di funzioni paragonabili agli switch Layer 2 di accesso.



EasySmart
(esempio serie DES-1100 e DGS-1100)

Le soluzioni EasySmart sono invece pensate per i nostri clienti che necessitano di soluzioni economiche ma allo stesso tempo complete di un set di funzionalità importanti (esempio IEEE 802.1p Qualità di servizio). Quest'ultime sono il passaggio naturale da soluzioni Unmanaged.

SWITCH ENTRY LEVEL - SMART & SMARTPRO

CLASSIFICAZIONE



LEGENDA

PoE

Lo switch è Power Over Ethernet: permette di alimentare apparecchiature utilizzando lo stesso cavo che le collega alla rete dati Ethernet

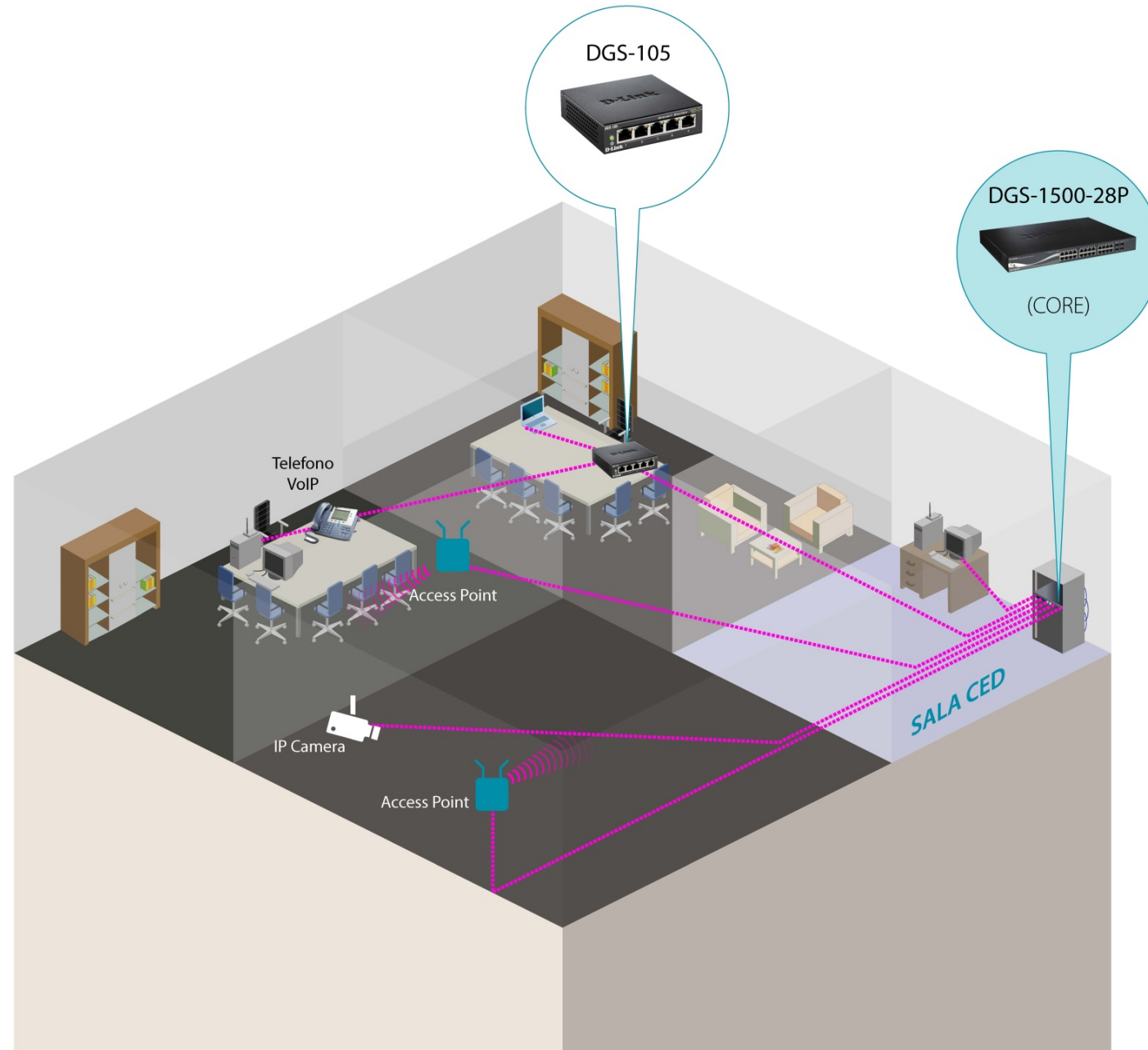
PoE 30W

Lo switch è Power Over Ethernet e alcune delle sue porte possono erogare fino a 30 Watt (per alimentare periferiche più potenti)

Full PoE

Lo switch è Power Over Ethernet e tutte le sue porte possono erogare fino a 30 Watt (per alimentare periferiche più potenti)

SWITCH ENTRY LEVEL - UNMANAGED, SMART E SMARTPRO











DGS-1510

WEB Stackable 10G SmartPro Switch Family

DGS-1510

	DGS-1510-20	DGS-1510-28	DGS-1510-28P	DGS-1510-52	DGS-1510-28X	DGS-1510-52X
Model						
H/W Config	16x10/100/1000M 2xGigabit SFP 2x10 Gigabit SFP+	24x10/100/1000M 2xGigabit SFP 2x10 Gigabit SFP+	24x10/100/1000M PoE 2xGigabit SFP 2x10 Gigabit SFP+	48x10/100/1000M 2xGigabit SFP 2x10 Gigabit SFP+	24x10/100/1000M 4x10 Gigabit SFP+	48x10/100/1000M 4x10 Gigabit SFP+

- Soluzioni che integrano L3 Intersvlan Routing e Stacking fisico 10GB che li rendono paragonabili alle soluzioni Layer 2+ Managed ma con costi contenuti .
- Incorporano la tecnologia D-Link Green™ 3.0 con maggiori opzioni per il risparmio energetico.
- Supporto alla gestione e ai servizi IPv6 per un agevole migrazione futura da IPv4 a IPv6
- Funzioni di Management e di sicurezza simili ad uno Switch Managed ma con minore complessità di installazione grazie all'interfaccia WEB e alle configurazioni guidate.
- Porte 10 GB SFP+
- Porta di console RJ45

Soluzioni SmartPro – Stacking

DGS-1510-28

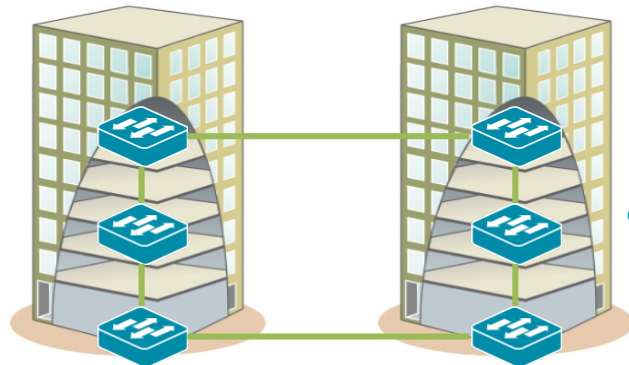
DGS-1510-28X

DGS-1510-52



Stacking fisico tramite le due ultime porte 10GB SFP+, stacking fino a 6 unità con capacità 40GB.

Configurazione ad anello o lineare . Cavo di stack non compreso nella confezione



La soluzione supporta il remote stacking tramite Transceiver 10 GB SFP+ per collegamenti tra piani o edifici. Le distanze sono determinate dalle proprietà dei Transceiver scelti.



DEM-CB100S/300S/700S

Si possono usare anche 3 cavi SFP+ Direct attach per brevi distanze

- Nel rack (1 metro): DEM-CB100S
- Rack vicino (3 metri): DEM-CB300S
- Tra rack (7 metri): DEM-CB700S



DES-1210 and DGS-1210 WEB Switch Solution

Soluzioni Smart PoE

DGS-1210-08P

8x 10/100/1000 Mbps PoE
+
2 SFP
PoE Budget 45 watt
Fan_Less



DGS-1210-10P

8x 10/100/1000 Mbps PoE
+
2 SFP /1000 Mbps Combo
PoE Budget 78 watt
(support 100 Base FX SFP)
Fan_Less



DGS-1210-24P

24x 10/100/1000 Mbps (12 PoE)
+ 4 SFP
PoE Budget 85 Watt
2 Smart Fan



DGS-1210-28P

24x 10/100/1000 Mbps PoE +
4 SFP
PoE Budget 185 Watt
3 Smart Fan



DES-1210-08P

8x 10/100 PoE, PoE Budget 72 watt
(support 100 Base FX SFP)
Fan_Less



DES-1210-28P

24 x 10/100 PoE +
2x 1000T + 2 SFP Combo
PoE Budget 193 Watt
(support 100 Base FX SFP)
4 Smart Fan



Soluzioni Smart Fast Ethernet & Gigabit

DES-1210-28

24 x 10/100 Mbps
+ 2x1000T + 2 SFP Combo
(support 100 Base FX SFP)
Fanless



DES-1210-52

48 x 10/100Mbps
+ 2x1000T + 2 SFP Combo
(support 100 Base FX SFP)
Fanless



DGS-1210-48 HW Dx

48 x 10/100/1000 Mbps
+ 4 SFP+ combo
2 smart fans



greenⁱethernet

DGS-1210-20

16 x 10/100/1000 Mbps
+ 4 SFP ports
Fanless



greenⁱethernet

DGS-1210-28

24 x 10/100/1000 Mbps
+ 4 SFP ports
Fanless



greenⁱethernet

DGS-1210-52

48 x 10/100/1000 Mbps
+ 4 SFP ports
(support 100 Base FX SFP)
2 smart fans



greenⁱethernet

Principali funzioni Smart

Functions

802.1Q Vlan
Asymmetric VLAN
Management VLAN
Link aggregation / Port Trunking
IEEE 802.1p QoS
IGMP snooping
802.1X port-based authentication
Safeguard Engine
Port Mirroring
SNMP v1 /v2 e v3
Web Gui Configuration
Green Ethernet **

DHCP Auto-Configuration
Jumbo frame
Loopback Detection
ACL
Bandwidth Control
CLI/Telnet support
Auto Voice VLAN

Autosurveillance VLAN per videocamere IP
DHCP server screening
ARP spoofing prevention
SSL
Spanning Tree 802.1w RSTP
** only for Gigabit Switches



Switch Entry Level – EasySmart

SWITCH ENTRY LEVEL - EASYSMART

CLASSIFICAZIONE



DES-1100-16



DGS-1100-08



DGS-1100-16



DES-1100-24



DGS-1100-08P



DGS-1100-24

GIGABIT

VLAN • LINK AGGREGATION • LOOPBACK DETECTION • MONITORING DI RETE

FUNZIONALITA'

LEGENDA

PoE

Lo switch è Power Over Ethernet:
permette di alimentare
apparecchiature utilizzando lo stesso
cavo che le collega alla rete dati
Ethernet



DGS-1100 e DES-1100 Easy WEB Switch Solutions

Soluzioni EasySmart



greenⁱethernet

DES-1100-16
16 x 10/100 Mbps
Fanless



greenⁱethernet

DES-1100-24
24 x 10/100 Mbps
Fanless



DGS-1100-08
8 x 10/100/1000 Mbps
Fanless



DGS-1100-08P
8 x 10/100/1000 Mbps
Power Budget 64W
Fanless



greenⁱethernet

DGS-1100-16
16 x 10/100/1000 Mbps
Fanless



greenⁱethernet

DGS-1100-24
24 x 10/100/1000 Mbps
Fanless

Principali funzioni EasySmart

Category	Feature	D-Link DES-1100-xx DGS-1100-xx
Porte	10/100 Mbps	16/24
Funzioni L2	Loopback Detection	Yes
	802.1p QoS (code)	Yes(4)
	Trunk (Gruppi/membri)	Yes(2/2-4)
	IGMP Snooping	Yes
	Port Mirror	Yes
	Broadcast Storm	Yes
	802.1Q VLAN/Port-Based VLAN (asymmetric Vlan)	Yes
Management	Web	Yes
	Utility	Yes
Altro	Tecnologia Green	Yes

Fanless: tecnologia senza ventole

Formato desktop: installazione in spazi ridotti

Monitoring di traffico:

Transmit packet & collision

Receive packet & Transmit packet

Receive packet & Drop packet

Receive packet & CRC packet



Switch Entry Level – Unmanaged

SWITCH ENTRY LEVEL - UNMANAGED GIGABIT

CLASSIFICAZIONE



QoS • JUMBO FRAME

PLASTIC HOUSING

METAL HOUSING

GREEN ETHERNET • PLUG AND PLAY



FUNZIONALITA'

LEGENDA



Lo switch è Power Over Ethernet: permette di alimentare apparecchiature utilizzando lo stesso cavo che le collega alla rete dati Ethernet



Desktop



Desktop / Rack

Soluzioni Unmanaged – Fast Ethernet e Gigabit

DES-1005D

5 x 10/100 Mbps

DES-1005P

4 x 10/100 Mbps
+ PoE port



DES-1008D

8 x 10/100 Mbps



DES-1008PA

4 x 10/100 Mbps
+ 4 PoE ports (52W)



DES-1016D

16 x 10/100 Mbps



DES-1024D

24 x 10/100 Mbps



Soluzioni Metal housing con QoS
e Jumbo frame (1536 Bytes)

DES-105

5 x 10/100/1000 Mbps



DES-108

8 x 10/100/1000 Mbps



DGS-1008D

8 x 10/100/1000
Mbps

DGS-1005D

5 x 10/100/1000
Mbps



DGS-1008P

4 x 10/100/1000
Mbps + 4 PoE ports
(52W)



DGS-1016D

16 x 10/100/1000
Mbps



DGS-1024D

24 x 10/100/1000
Mbps



Soluzioni Metal housing con QoS
e Jumbo frame (1536 Bytes)

DGS-105

5 x 10/100/1000
Mbps



DGS-108

8 x 10/100/1000
Mbps



D-Link[®]
Building Networks for People



Thank you.