

Traditional Router + Extender Systems



Covr Whole Home Powerline Wi-Fi System

## Enhanced User Experience

The D-Link Wi-Fi app provides a quick and simple way to set up your Covr Hybrid Whole Home Powerline Wi-Fi System and perform basic management, without even touching a computer!



Download the free D-Link Wi-Fi app from the App Store or Google Play.

🔍 D-Link Wi-Fi




### COVR-P2500

<b>Ethernet Ports</b>	3 x Gigabit LAN
<b>Antennas</b>	2 x External
<b>Wi-Fi Data Signal Rate</b>	Up to 866 Mbps (5 GHz) / Up to 300 Mbps (2.4 GHz)
<b>Powerline Standard</b>	HomePlug AV2 1300 Mbps MU-MIMO
<b>Dimensions</b>	140 x 68 x 47 mm (antennas retracted) 5.51 x 2.68 x 1.85 in (antennas retracted)
<b>WPS</b>	Yes
<b>Coverage Area</b>	Up to 450 sqm/4800 sq. ft.



## Works with your Existing Router

The Covr Hybrid Whole Home Powerline Wi-Fi System works with your existing home router. Simply connect one of the Covr Hybrid Powerline Wi-Fi extenders to one of the Ethernet ports on the back of your router using the included Ethernet cable.



## Features

- Qualcomm® SON technology for seamless roaming
- 802.11ac wave 2 dual-band wireless
- Combined speeds of up to AC1200
- MU-MIMO
- Three Gigabit LAN ports per device
- HomePlug AV2 1300



## HYBRID WHOLE HOME POWERLINE WI-FI SYSTEM



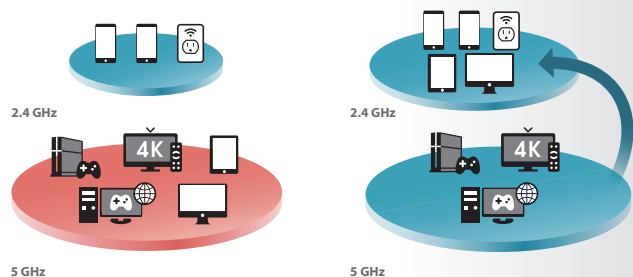
D-Link

D-Link®



# Smart Steering

Smart steering selects the best band for your device so that you get the best performance possible – all the time. With smart steering, Covr will automatically connect devices to the optimal Wi-Fi band and even move devices between Wi-Fi bands when the network experiences congestion. All this without dropouts, lag or any interruption to your wireless connection; and most importantly without you lifting a finger.



## Traditional Dual-band Wi-Fi

High network traffic on the 5 GHz band causes congestion and slows down devices.

## Covr with Smart Steering

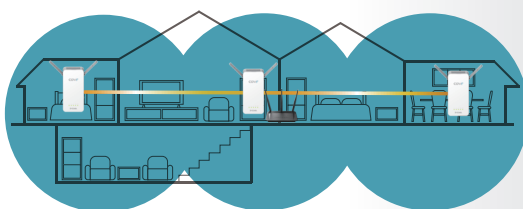
Some devices automatically shifted to the 2.4 GHz band to balance network traffic and reduce congestion.

 Normal network traffic       Network congestion



# Expandable Network

The Covr Hybrid Whole Home Powerline Wi-Fi System is pre-paired and works straight out of the box, so you just need to plug them in and get started. But Covr is also a scalable solution; extra extenders can be added to increase the reach of your network.




Add an extender for large homes




# Covr your Whole Home in Seamless Wi-Fi

Say goodbye to Wi-Fi deadzones, buffering and multiple networks in your home. Covr is a seamless solution that gets rid of dead spots and blankets your home in seamless Wi-Fi.


## HIGH PERFORMANCE

 With 1,300 Mbps AV2.1 and MIMO technologies at its core, Covr Hybrid Whole Home Powerline Wi-Fi System provides a dedicated Powerline backbone that delivers lightning fast speed, perfect for gaming and 4K video streaming.

## MORE COVERAGE

 Through the hybrid technology of a dedicated Powerline backbone and Wi-Fi combined, Covr provides seamless coverage for the most robust home network possible. If you need additional coverage, just add more Covr Hybrid Powerline Wi-Fi extenders.


## ONE SEAMLESS NETWORK

 With Covr, there's just one wireless network name (SSID) for your entire home, no matter where you are.


# High Speed Hybrid Technology

D-Link's Covr Hybrid Whole Home Powerline Wi-Fi System is the only solution to offer users the option to use Powerline to create a whole-home network, using the home's existing electrical wiring to transfer data through a dedicated backhaul at high speeds. Covr combines ultra-fast 1300 Mbps AV2.1, MIMO and AC1200 Wi-Fi together with your existing router to create a seamless whole home network of blazing fast speed throughout your home, even in the most hard-to-reach places.

## SIMPLY PLUG IN AND GO

 Setup up in seconds with plug and play installation. No technical knowledge needed.

## WORKS WITH EXISTING ROUTER

 Simply connect to your home router to add seamless whole home Wi-Fi to your existing network.

