

MASS-FLOW *Select*

New Mass Flow Meters/Controllers featuring flexibility and cost reduction

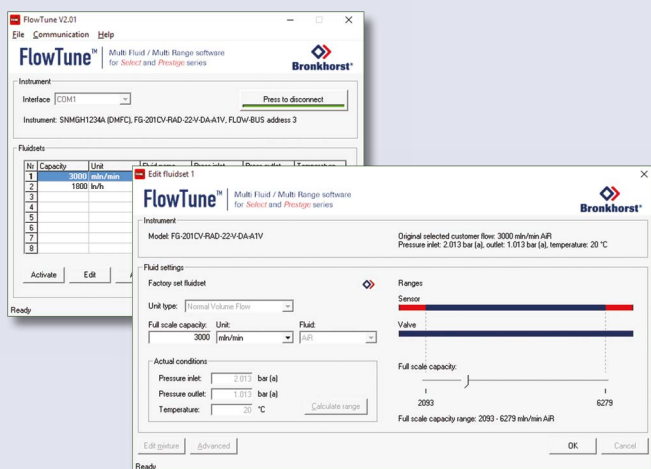


Bronkhorst High-Tech B.V. manufactures the largest variety of thermal Mass Flow Meters and Controllers for gases and liquids available on the market. In this leaflet Bronkhorst present their "MASS-FLOW *Select*" Series of Digital Mass Flow Meters and Controllers for Gases. These instruments offer greater flexibility for user selection of both flow ranges and gas types whilst maintaining their high accuracy with turndown ranges for measurement and control up to 187,5 to 1!

As a result of this feature, Original Equipment Manufacturers are able to drastically reduce the variety of spare instruments they keep on stock and thus reduce the cost of ownership. Users of MFC's in pilot plants or laboratories can rescale their instruments on site, saving time and money; substantial costs for mounting and dismantling and also for service and recalibration are no longer

applicable! For the convenience of the user, Bronkhorst has developed an easy-to-use software tool called "FlowTune". By hooking up the instrument to the RS232 port of a lap-top and running this freeware configuration tool, the selection of different gas types and flow ranges is as simple as 1, 2, 3.

The instruments with the new "MASS-FLOW *Select*" features, covering flow ranges from 0...0,7 ml_n/min up to 0...1670 l_n/min, are available in two configurations. The EL-FLOW *Select* series have a housing designed for laboratory and clean processing conditions, the IN-FLOW *Select* series are of rugged design according to IP65 (dust- and waterproof). The latter are also ATEX Category 3, approved for use in Zone 2 hazardous areas. In addition to the standard analog I/O-signals and the RS232 connection, there is the possibility of integrating an interface board with DeviceNet™, PROFIBUS DP, Modbus, EtherCAT®, PROFINET or FLOW-BUS protocol.



> Multi Gas / Multi Range features

- ◆ Measurement and control of gas flow ranges from 0-0,7 ml_n/min up to 0-1670 l_n/min covered with one product line
- ◆ Rangeability up to 187,5 : 1
- ◆ Flexible, user-programmable ranges and gas types
- ◆ Storage of max. 8 calibration curves
- ◆ Easy-to-use configuration software
- ◆ Multi Gas / Multi Range functionality up to 10 bar; pressure rating up to 100 bar
- ◆ High accuracy and repeatability

DASTEC S.R.L.

Representantes / Distribuidores Exclusivos

Buenos Aires, Argentina

Tel.: (54 - 11) 5352-2500

Email: info@dastecsr.com.ar

Web: www.dastecsr.com.ar


Bronkhorst®

Digital pc-board with optional add-on interface board to PROFIBUS, DeviceNet™, Modbus, EtherCAT®, PROFINET or FLOW-BUS featuring rotary switches for selecting the node address

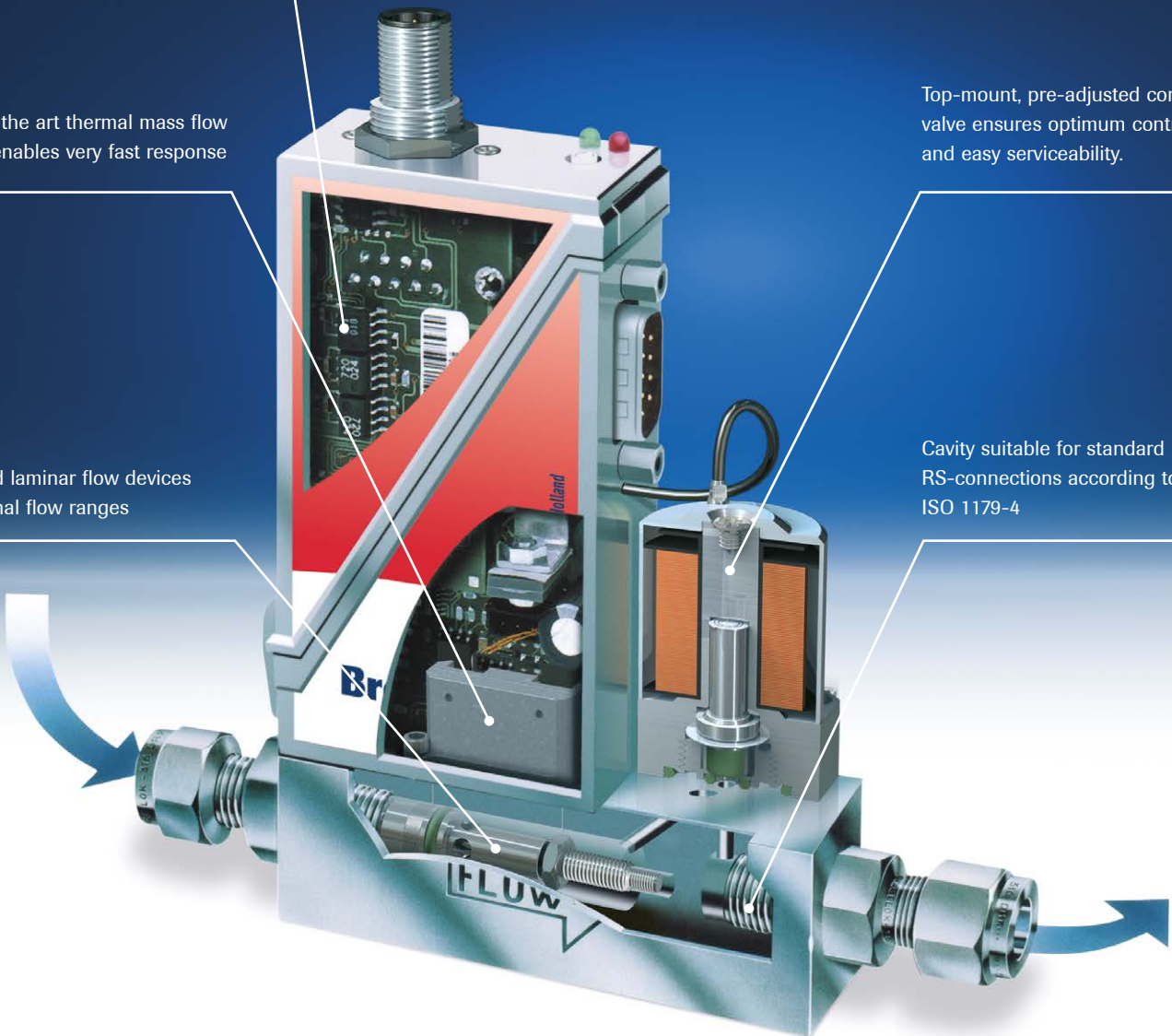
The advanced technology of MASS-FLOW *Select*

State of the art thermal mass flow sensor enables very fast response

Patented laminar flow devices in nominal flow ranges

Top-mount, pre-adjusted control valve ensures optimum control and easy serviceability.

Cavity suitable for standard RS-connections according to ISO 1179-4



DASTEC S.R.L.

Representantes / Distribuidores Exclusivos

Buenos Aires, Argentina

Tel.: (54 - 11) 5352-2500

Email: info@dastecsr.com.ar

Web: www.dastecsr.com.ar



Bronkhorst®

Bronkhorst High-Tech B.V. Nijverheidsstraat 1a, NL-7261 AK Ruurlo Netherlands
T +31(0)573 45 88 00 F +31(0)573 45 88 08 I www.bronkhorst.com E info@bronkhorst.com

ISO 9001
ISO 14001

Koninkrijk
Award

9.60.07C
© BHT-1163378