

PARTS & SUPPLIES

FALL 2020 | PROMOTIONAL CATALOG



TRANE[®]
HVAC Parts & Supplies

757-558-8585 | www.Damuth.com

THE COMPLETE SOURCE

FOR ALL YOUR HVAC NEEDS IN 3 CONVENIENT LOCATIONS

Hours of Operation: 7:30 AM - 5:00 PM | M - F



NEWPORT NEWS

507 Muller Lane
Newport News, VA 23606
757-369-9400



VIRGINIA BEACH

230 Clearfield Ave., Ste. 126
Virginia Beach, VA 23462
757-490-2390



CHESAPEAKE

1104 Cavalier Blvd.
Chesapeake, VA 23323
757-558-8585

RESIDENTIAL & LIGHT COMMERCIAL EQUIPMENT
OEM & NON-OEM REPLACEMENT COMPONENTS
INSTALLATION & SERVICE SUPPLIES
DEDICATED SUPPORT STAFF



TRANE[®]
HVAC Parts & Supplies

03 INDOOR AIR
QUALITY

13 TECHNICIAN TOOLS

05 MOTORS &
ELECTRICAL

15 SPOTLIGHT TOOLS
& PROMOTIONS

07 CAPACITORS &
THERMOSTATS

17 RESIDENTIAL
EQUIPMENT

09 GENERAL INSTALL

19 COMMERCIAL
EQUIPMENT

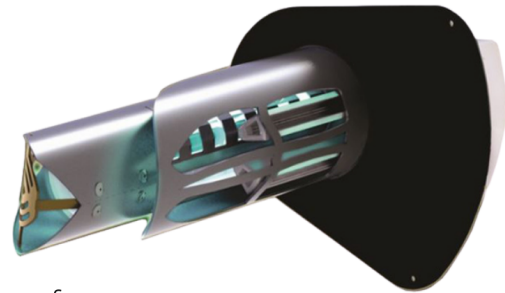
11 SERVICE

21 FAQ'S

CONTENTS

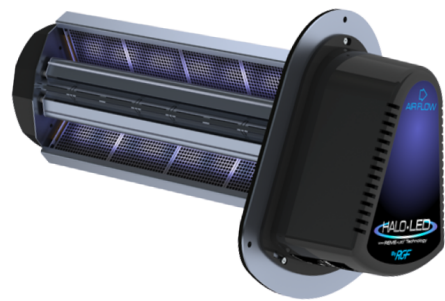
REME HALO® Whole Home In-Duct Air Purifier

- Dual ionizers to reduce airborne particulates (dust, dander, pollen, mold spores)
- Kills up to 99% of bacteria, germs, and mold.
- New zinc ions kill 99% of viruses on surfaces
- Provides whole home and building purification.
- Easily integrated with your existing HVAC system.
- (2) quick release features for an easy, no tool cell replacement
- Incorporates an adjustable shroud around the REME® cell, allowing customization of the advanced oxidation plasma output.



Did you know? Most people spend up to 90% of their time indoors, where air quality can be up to 100x more polluted than outdoor air. This polluted air has a 50% chance of contributing to health issues such as allergies, headaches, asthma and various diseases.

HALO-LED™ Whole Home In-Duct Air Purifier



- Replaceable LED cell module with 2.5x longer life than current mercury vapor UV lamp technologies
- Industry's first washable catalyst for high load environments (ie. cigar bars)
- Reduces airborne and surface microbials, bacteria, viruses, and mold
- Reduction of smoke, odors, VOCs, allergens, dust, and particulate
- Mercury and ozone free
- Seven-year limited warranty

PlasmaAir



PlasmaPURE AutoClean 1500

The PlasmaPURE AutoClean 1500 is a self-cleaning, maintenance-free needlepoint ionizer that produces positive and negative ions that neutralize harmful pollutants and odors in the home. It can be easily mounted at the fan inlet of almost any air handling system.



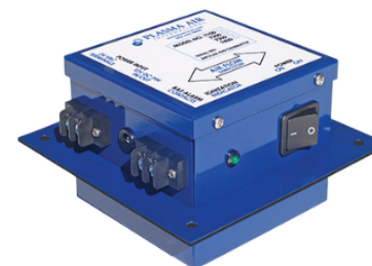
PlasmaPURE 600 Series

The PlasmaPURE 600 is a brush-style needlepoint ionizer producing positive and negative oxygen ions that neutralize odors and harmful pollutants. This unit is highly versatile as it may be installed in a furnace, an air handling unit, fan coil unit, PTAC, heat pump or ductless split system.



PlasmaPURE 7000 Series

PlasmaPURE 7000 provides safe and continuous air purification to the entire home using needlepoint bipolar ionization. Unit easily installs directly onto HVAC system ductwork.



INDOOR AIR QUALITY

INDOOR AIR QUALITY

INTEGRAL MOTORS UP TO 200 HP

ITEM NO.	ITEM
TO120	MOTOR; 5HP 1800 208-230/460 FRAM184T ODP F1
MOT18769	MOTOR; 7.5,1800,DP,213T,3/60/230/460
TO130	MOTOR; 10HP 1800 208-230/460 FRAM215T ODP F1
E451M2	MOTOR; 15HP 1800 208-230/460 FRAM254T ODP F1
E407M2	MOTOR; 20HP 1800 208-230/460 FRAM256T ODP F1
E514M2	MOTOR; 25HP 1800 208-230/460 FRAM284T ODP F1
TO156	MOTOR; 30HP 1800 208-230/460 FRAM286T ODP F1



TRUCK STOCK MOTORS

ITEM NO.	ITEM
FD6000	MOTOR; 1/6-1/2HP 1075 208/230V MULTI-HP DIRECT DRIVE BLOWER
FD6001A	MOTOR; 3/4-1/5 HP, 1075 RPM, 208-230 VOLT, 48 FRAME, OAO ENCL
FDL6001A	MOTOR; 1/2-1/6 HP, 1075 RPM, 115 VOLT, 48 FRAME, OAO ENCL
ORM5488	MOTOR; 1/3-1/8 HP, 825 RPM, 208-230 VOLT, 48 FRAME, TEAO ENCL
ORM5458	MOTOR; 1/3-1/6 HP, 1075 RPM, 208-230 VOLT, 48 FRAME, TEAO ENCL
D1036	MOTOR; 1/3 HP, 1075 RPM, 208-230 VOLT, 48 FRAME, OAO ENCL



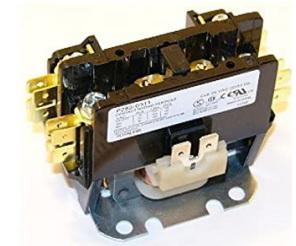
SF GENERIC ECM VARIABLE SPEED MOTORS

ITEM NO.	ITEM
SFMUNVECMCTID01	MOTOR; SF, UNIVERSAL INDOOR ECM CT - 3/4 - 1HP; 115/230V; DUAL ROTATION
SFMUNVECMCTID12	MOTOR; SF UNIVERSAL INDOOR ECM CT - 1/3 - 1/2HP; 115/230V; DUAL ROTATION



CONTACTORS

ITEM NO.	ITEM
CTR02573	CONTACTOR; 2P 30A 24VAC / SCREWS
CTR02574	CONTACTOR; 1P 40A 24VAC / SCREWS
CTR02575	CONTACTOR; 3P 30A 24VAC / SCREWS
CTR02576	CONTACTOR; 2P 40A 24VAC / SCREWS
CTR02577	CONTACTOR; 3P 40A 24VAC / LUGS
CTR02578	CONTACTOR; 3P 40A 120VAC / LUGS
CTR02579	CONTACTOR; 1P 30A 24VAC / SCREWS
CTR02580	CONTACTOR; 3P 30A 120VAC / SCREWS
CTR02581	CONTACTOR; 3P 60A 24VAC / LUGS
CTR02582	CONTACTOR; 3P 60A 120VAC / LUGS
CTR02583	CONTACTOR; 3P 75A 120VAC / LUGS
CTR02584	CONTACTOR; 3P 60A 208/240VAC / LUGS
CTR02585	CONTACTOR; 3P 40A 208/240VAC / LUGS
CTR02586	CONTACTOR; 3P 90A 120VAC / LUGS
CTR02587	CONTACTOR; 3P 50A 120VAC / LUGS
CTR02588	CONTACTOR; 2P 30A 120VAC / SCREWS
CTR02589	CONTACTOR; 3P 50A 24VAC / LUGS
CTR02590	CONTACTOR; 3P 50A 24VAC / LUGS
SWT03533	SWITCH; AUX, 1SPDT FOR 20A-60A CONTACTORS
SWT03534	SWITCH; AUX, 1NO/1NC, FOR 20A-60A
SWT03535	SWITCH; AUX, 2SPDT FOR 20A-60A CONTACTORS
CHM00325	(OSI) CHEMICAL; AEROSOL, ELEC. CONTACT CLEANER, 11 OZ



TRANSFORMERS

ITEM NO.	ITEM
SFTRR40VA	TRANSFORMER; 40VA 50/60HZ PRIMARY 120/280/240 VAC, SECONDARY 24VAC
SFTRR75VA	TRANSFORMER; 75VA 50/60HZ PRIMARY 120/280/240 VAC, SECONDARY 24VAC



WIRING

ITEM NO.	ITEM
QT2810	TERMINAL; QWIKLUG 3 TERMINAL REPAIR LUGS 10 AWG, 2FT LEADS
QT2812	TERMINAL; QWIKLUG 3 TERMINAL REPAIR LUGS 12 AWG, 2FT LEADS
WIR07889	WIRE; 14/4 STRANDED BLK (B,R,G,W)250 FT SPOOL MINI SPLIT



FUSES

1/3 amp up to 300 amp fuses available.

**Common sizes in stock; quick ship on special orders*







Review us
on
Google™

Leave us a 5-Star Review on Google and receive a FREE Trane Hat!

While Supplies Last. See a Parts Associate to redeem.



SF CAPACITORS

ITEM NO.	ITEM
SFCAP075440	CAPACITOR; 7.5 MFD 440V OVAL RUN CAPACITOR
SFCAP10440	CAPACITOR; 10MFD 440V OVAL RUN CAPACITOR
SFCAP125440	CAPACITOR; 12.5MFD 440V OVAL RUN CAPACITOR
SFCAP15440	CAPACITOR; 15MFD 440V OVAL RUN CAPACITOR
SFCAP15440R	CAPACITOR; 15MFD 370/440V ROUND RUN CAPACITOR
SFCAP20440	CAPACITOR; 20MFD 440V OVAL RUN CAPACITOR
SFCAP2440	CAPACITOR; 2MFD 440V OVAL RUN CAPACITOR
SFCAP25440	CAPACITOR; 25MFD 440V OVAL RUN CAPACITOR
SFCAP25440R	CAPACITOR; 25MFD 370/440V ROUND RUN CAPACITOR
SFCAP25D5440	CAPACITOR; 25+5MFD 440V OVAL RUN CAPACITOR
SFCAP25D5440R	CAPACITOR; 25+5MFD 370/440V ROUND RUN CAPACITOR
SFCAP30D5440	OSI CAPACITOR; 30+5MFD 440V OVAL RUN CAPACITOR
SFCAP30D5440R	CAPACITOR; 30+5MFD 440V ROUND RUN CAPACITOR
SFCAP35D5440R	CAPACITOR; 35+5 MFD 440V ROUND RUN CAPACITOR
SFCAP35D75440R	CAPACITOR; 35+7.5MFD 440V ROUND RUN CAPACITOR
SFCAP40440	CAPACITOR; 40MFD 440V OVAL RUN CAPACITOR
SFCAP40440R	CAPACITOR; 40MFD 440V ROUND RUN CAPACITOR
SFCAP40D5440R	CAPACITOR; 40+5 MFD 440V ROUND RUN CAPACITOR
SFCAP45440	CAPACITOR; 45MFD 440V OVAL RUN CAPACITOR
SFCAP45D5440R	CAPACITOR; 45+5MFD 440V ROUND RUN CAPACITOR
SFCAP45D75440R	CAPACITOR; 45+7.5MFD 370/440V ROUND RUN CAPACITOR
SFCAP50D75440R	CAPACITOR; 50+7.5MFD 440V ROUND RUN CAPACITOR
SFCAP5440	CAPACITOR; 5MFD 440V OVAL RUN CAPACITOR
SFCAP55D5440R	CAPACITOR; 55+5MFD 370/440V ROUND RUN CAPACITOR
SFCAP60D5440R	CAPACITOR; 60+5MFD 440V ROUND RUN CAPACITOR
SFCAP70D5440R	CAPACITOR; 70+5MFD 370/440V ROUND RUN CAPACITOR
SFCAP80440R	CAPACITOR; 80MFD 440V ROUND RUN CAPACITOR
SFCAP80D5440R	CAPACITOR; 80+5MFD 440V ROUND RUN CAPACITOR
SFCAP80D75440R	CAPACITOR; 80+7.5MFD 370/440V ROUND RUN CAPACITOR



The SF™ Run Capacitor product line consists of a wide range of high quality and reliable run capacitors in round and oval cases and 370 or 440 volts.

- Meets EIA-465-A industry standards
- 60,000 hours operating life
- 2,000 hald tested and approved
- UL approved pressure sensitive interruptor
- 1 year part warranty

HARD START CAPACITORS

ITEM NO.	ITEM
CPT02326	CAPACITOR; START, 112 MFD, 330V, ROUND, W/ RESISTOR
CPT02327	CAPACITOR; START, 150 MFD, 330V, ROUND, W/ RESISTOR
CPT02328	CAPACITOR; START, 196 MFD, 330V, ROUND, W/ RESISTOR
CPT02329	CAPACITOR; START, 229 +/- 5 MFD, 330V, ROUND, W/ RESISTOR



WIRE

ITEM NO.	ITEM
WIR02579	WIRE; BARON T-STAT WIRE, 18/8, 250 FOOT SPOOLS, 18 AWG
WIR02581	WIRE; BARON T-STAT WIRE, 18/10, 250 FOOT SPOOLS, 18 AWG UL CL2, CUL CM OR CMH/FT1



HONEYWELL

ITEM NO.	ITEM
TH4110U2005	THERMOSTAT; T4 PRO 1H/1C HEAT PUMP OR CONVENTIONAL 7 DAY PROGRAMMABLE
TH5220D1029	THERMOSTAT; NON-PROGRAMMABLE, DIGITAL, BATTERY OR HARD WIRE
TH6210U2001	THERMOSTAT; T6 PRO 2H/1C HP OR 1H/1C CONVENTIONAL 7 DAY PROGRAMMABLE
TH6220U2000	THERMOSTAT; T6 PRO 2H/2C HEAT PUMP OR CONVENTIONAL 7 DAY PROGRAMMABLE
TH6320WF2003	THERMOSTAT; LYRIC T6 PRO WI-FI 3H/2C HEAT PUMP OR 2 H/2C CONVENTIONAL
TH8320R1003	THERMOSTAT; VISIONPRO 8000 WITH REDLINK TECHNOLOGY. RESIDENTIAL OR COMMERCIAL USE
TH8321WF1001	TSTAT: WI-FI VISIONPRO THERMOSTAT 3H/2C HP, 2H/2C CONV



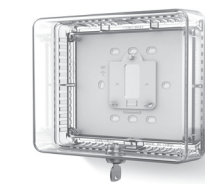
TRANE

ITEM NO.	ITEM
TCONT200AN11AA	THERMOSTAT; 1 HEAT (GAS/ELEC) 1 COOL NON-PROGRAMMABLE
TCONT302AS42DA	THERMOSTAT; PROGRAMMABLE 7-DAY 4 HEAT/2 COOL TRANE COMFORT CONTROL TOUCH SCREEN
TCONT724AS42DA	THERMOSTAT; XL724



GUARDS

ITEM NO.	ITEM
TG511A1000	COVER; THERMOSTAT GUARD
TG512A1009	T-STAT GUARD COVER - CLEAR



OUTDOOR THERMOSTATS

ITEM NO.	ITEM
TAYSTAT250B	OUTDOOR SENSOR THERMOSTAT



Sign up for our email list to receive coupons, product promotions, info on upcoming events, trainings, and more!

See a Parts Associate or email Marketing@damuth.com to subscribe!



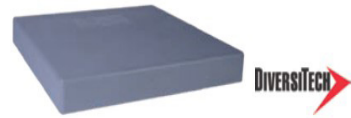
OUTDOOR SLABS/PADS

ITEM NO.	ITEM
PAD01154	18"X38"X3" GRAY E-LITE MINI SPLIT PAD
PAD01337	36"X36"X2" BLACK PAD
PAD01107	36"X36"X3" BLACK PAD
PAD01475	38"X42"X3" BLACK PAD
PAD01496	50"X60"X3" BLACK PAD
PAD00883	48"X66"X3" ULTRALITE PAD

EnviroPad Black Plastic A/C Pad

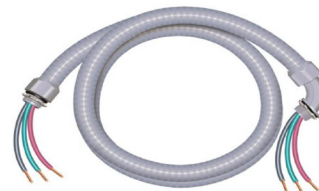


E-Lite® Plastic Equipment Pads



WHIPS AND DISCONNECTS

ITEM NO.	ITEM
KIT07851	3/4"x6' METALLIC WHIP
KIT07853	1/2"x6' NON-METALLIC WHIP
KIT07855	3/4"x6' NON-METALLIC WHIP
SWT02591	60A FUSIBLE DISCONNECT
SWT02592	60A NON-FUSED DISCONNECT



CONDENSATE MANAGEMENT - FLOAT SWITCHES & TRAPS

ITEM NO.	ITEM
96100	AG-1100 FLOAT SWITCH FOR METAL DRAIN PANS
96106	AG-1200 FLOAT SWITCH FOR METAL AND PLASTIC DRAIN PANS
AG3150E	AG-3150E SCREW IN PRIMARY/SECONDARY PAN SWITCH
97622	SS610E SAFE-T-SWITCH FOR DUCTLESS MINI-SPLIT
83114	EZ-TRAP 3/4" CROSS TRAP W/ BRUSH
83210	EZ-TRAP 3/4" STANDARD



LINE SET FLUSH

ITEM NO.	ITEM
QT1100	QWIK SYSTEM FLUSH 2 LB AEROSOL CAN
CHM00510	RX-11 FLUSH 1 LB



TAPES AND SILICONE

ITEM NO.	ITEM
SF682	SHURFLEX NON-PRINTED METALIZED CLOTH DUCT TAPE
SF683	SHURFLEX PRINTED METALIZED CLOTH DUCT TAPE
TAP00069	2" INDUSTRIAL GRADE DUCT TAPE; BLACK
TAP00080	3" FSK INSULATION TAPE
TAP00081	2 1/2" UL 181 LISTED FOIL TAPE
TAP00122	3M SUPER 33+ PROFESSIONAL GRADE ELECTRICAL TAPE
TAP00123	3M SUPER 88 HEAVY DUTY ELECTRICAL TAPE
SLT00083	CLEAR SILICONE SEALANT 10.3 FL OZ
SLT00090	HIGH TEMP RED SILICONE 10.1 FL OZ



MALE NYLON COUPLERS

ITEM NO.	ITEM
SF-NRQDMFI-250	22-18 MALE QUICK DISCONNECT COUPLER NYLON FULLY INSULATED .250"
SF-NBQDMFI-250	16-14 MALE QUICK DISCONNECT COUPLER NYLON FULLY INSULATED .250"

FEMALE NYLON COUPLERS

ITEM NO.	ITEM
SF-NRQDFFI-250	22-18 FEMALE QUICK DISCONNECT COUPLER, NYLON FULLY INSULATED .250"
SF-NBQDFFI-250	16-14 FEMALE QUICK DISCONNECT COUPLER, NYLON FULLY INSULATED .250"

CLOSED-END CONNECTORS

ITEM NO.	ITEM
SF-CES-22-14	22-14 CLOSED END CONNECTOR
SF-CES-16-10	16-10 CLOSED END CONNECTOR

DOUBLE MALE-FEMALE ADAPTERS

ITEM NO.	ITEM
SF-DMF-F	DBL MALE-FEMALE ADAPTER, FLAT .250"
SF-DMF-PB	DBL MALE-FEMALE ADAPTER, PIGGY BACK .250"

BUTT CONNECTORS

ITEM NO.	ITEM
SF-RBS	22-18 BUTT CONNECTOR
SF-BBS	16-14 BUTT CONNECTOR

WIRE NUTS

ITEM NO.	ITEM
SF-WC-BLUE/GREY/ORANGE	22-14 AWG BLUE, GREY, ORANGE
SF-WC-YELLOW/RED	22-10 AWG YELLOW, RED

RING TONGUE TERMINALS

ITEM NO.	ITEM
SF-RR6/RR10	22-18 RING TONGUE #6, #10
SF-BR6/BR10	16-14 RING TONGUE #6, #10
SF-BR1-4	16-14 RING TONGUE 1/4"

BLOCK SPADE TONGUE TERMINALS

ITEM NO.	ITEM
SF-RS6/RS10	22-18 BLOCK SPADE TONGUE #6, #10
SF-BS6/BS8/BS10	16-14 BLOCK SPADE TONGUE #6, #8 STUD, AND #10 STUD
SF-YS10	12-10 BLOCK SPADE TONGUE #10 STUD

SEALANTS

ITEM NO.	ITEM
SLT00067	RECTORSEAL PIPE THREAD SEALANT
RT201B	NYLON THREAD SEALANT
VG181	VERSA GRIP DUCT SEALANT
BRU0344	2" MASTIC BRUSH



*We also carry the full line of products from **LOCTITE**

COPPER *All varieties and sizes of copper fittings and brazing materials available.

ITEM NO.	ITEM
TUB14382	1/4"X50' SOFT DRAW COPPER
TUB14384	3/8"X50' SOFT DRAW COPPER
TUB14385	1/2"X50' SOFT DRAW COPPER
TUB14387	3/4"X50' SOFT DRAW COPPER
TUB14388	7/8"X50' SOFT DRAW COPPER



TUBING INSULATION

ITEM NO.	ITEM
INS02833 - INS02836	3/4" - 7/8" TUBING INSULATION 1/2" WALL



CONTROLS

ITEM NO.	ITEM
MOD00757	MODULE; 3-PHASE MOTOR PROTECTION-LINE VOLTAGE MONITOR
MON00004	MONITOR; 3 PHASE LINE, UNIVERSAL 190-600VAC, PHASE LOSS & REVERSAL
RLY02777	RELAY, TIME DELAY HEAT SEQUENCER, 24V, SPST-NO, DELAY ON 1-24 SECM DELAY OFF 45-75 SEC
RLY02779	(OSI) RELAY, TIME DELAY HEAT SEQUENCER, 24V, DPST-NO, DELAY ON 1-24 SEC, DELAY OFF 45-75 SEC
RLY02782	RELAY; TIME DELAY HEAT SEQUENCER, 24V, DPST-NO, DELAY ON 1-25 SEC, DELAY OFF 50-110 SEC
RLY02783	RELAY; TIME DELAY HEAT SEQUENCER, 24V, DPST-NO, SPST-NO, DELAY ON 1-25 SEC, DELAY OFF 50-110 SEC
RLY02784	RELAY; TIME DELAY HEAT SEQUENCER, 24V, 2 DPST-NO, DELAY ON 1-40 SEC, DELAY OFF 50-110 SEC



DRIERS, LIQUID & SUCTION

ITEM NO.	ITEM
DHY01451	DRIER; BI-FLOW; SERVICE FIRST; 8 CU. IN; 3/8" ODF CONNECTIONS; 2.3 TON CAPACITY
DHY01452	(OSI)DRIER; 163S; 16 CU. IN; 3/8" ODF CONNECTIONS; 5.7 TON CAPACITY
DHY01453	DRIER; LIQUID LINE; 8 CU. IN.; DCL084/3S, 1/2 ODF INLET X 3/8 ODF OUTLET; 8.0 TON
DHY01454	(OSI) DRIER; LIQUID LINE; SERVICE FIRST; 8 CU. IN.; 3/8" ODF CONNECTIONS; 6.0 TON CAPACITY;
DHY01455	DRIER; LIQUID LINE; SERVICE FIRST; 3 CU. IN.; DCL034/3S, 1/2 ODF
DHY01456	DRIER; LIQUID LINE; SERVICE FIRST; 5 CU. IN.; 5.4 TON CAPACITY; 1/2" ODF INLET X 3/8" ODF OUTLET;
DHY01459	DRIER; SUCTION LINE; SERVICE FIRST; 30 CU. IN.; DAS305SVV, 5/8 ODF CONNECTIONS; 5.1 TON
DHY01460	DRIER; SUCTION LINE; SERVICE FIRST; 16 CU. IN.; DAS166SVV, 3/4 ODF CONNECTIONS; 5.7 TON
DHY01461	DRIER; SUCTION LINE; SERVICE FIRST; 41 CU.IN.; DAS417S, 7/8 ODF CONNECTIONS; 8.6 TON CAPACITY
DHY01465	DRIER; LIQUID LINE; SERVICE FIRST; 3 CU. IN.; DCL032MF, 1/4 SAE FLARE M/F CONNECTIONS;
DHY01467	DRIER; BI-FLOW; SERVICE FIRST; 16 CU. IN.; DCB164S, 1/2 ODF CONNECTIONS; 9.1 TON CAPACITY
DHY01468	DRIER; LIQUID LINE; 8 CU. IN.; DCL084/2.5S, 1/2 INLET, 5/16 OUTLET ODF CONNECTIONS
DHY01469	DRIER; LIQUID LINE; SERVICE FIRST; 5 CU. IN.; DCL053S, 3/8 ODF CONNECTIONS; 4.63 TON CAPACITY;
DHY01470	DRIER; LIQUID LINE; 16 CU. IN. DCL165/4S, 11.4 TON CAPACITY
DHY01471	DRIER; LIQUID LINE; SERVICE FIRST; 8 CU. IN.; DCL084S, 1/2 ODF CONNECTIONS;
DHY01472	DRIER; LIQUID LINE; SERVICE FIRST; 16 CU. IN.; DCL163S, 3/8" ODF CONNECTIONS; 6.9 TON CAPACITY;
DHY01473	DRIER; LIQUID LINE; SERVICE FIRST; 16 CU.IN.; DCL164S, 1/2 ODF CONNECTIONS
DHY01474	DRIER; FILTER PURGE
DHY01480	DRIER; LIQUID LINE, 305S, 5/8 ODF
DHY01481	DRIER; LIQUID LINE, 307S, 7/8 ODF



CHEMICALS

ITEM NO.	ITEM
CHM00337	CHEMICAL; CAL-BRITE., (SHIPPING UOM 1 GAL HAZ) BOTTLE
CHM00341	(OSI) CHEMICAL; EVAP. POW'R.-C NO-RINSE EVAPORATOR CLEANER, 1 GAL. BOTTLE
CHM00344	CHEMICAL; (4 GAL/CTN) HD CALCLEAN, HEAVY DUTY E.A.C. AND COIL CLEANER , 1 GAL.BOTTLE
CHM00354	(OSI) CHEMICAL; EVAP FOAM-NO RINSE. EVAPORATOR CLEANER, 18 OZ. AEROSOL CAN
CHM00355	CHEMICAL; FOAM-BRITE. HIGH FOAMING CONDENSER CLEANER, (SHIPPING UOM 1 GAL HAZ) BOTTLE
CHM00361	CHEMICAL; (12 EA/CASE) GAS LEAK DETECTOR, CAL-BLUE, 1 QT. SPRAY BOTTLE
CHM00367	(OSI) CHEMICAL; GREEN CLEAN ALL-PURPOSE CLEANER, 1 QT. SPRAY BOTTLE
CHM00368	CHEMICAL; GREEN CLEAN ALL PURPOSE CLEANER, 1 GAL. BOTTLE
CHM00390	CHEMICAL; NICKET SAFE ICE MACH. CLNR., 16 FL. OZ. BOTTLE
CHM00393	(OSI) NON-ACID FOAMING CONDENSER CLEANER (BLUE), 4 X 1 GAL/CASE
CHM00464	CHEMICAL; NU-CALGON PANPAD, "15" SIZE
CHM00469	CHEMICAL; NU-CALGON PAN-TREAT CONDENSATE TABLETS
CHM00635	CHEMICAL; TRIPLE D PREMIUM ALKALINE COIL CLEANER, 1 GAL BOTTLE
CHM00765	CHEMICAL: GREEN SELECT EVAP-GREEN COIL CLEANER, NU-CALGON 4191-08, GAL BOTTLE
CHM01010	CHEMICAL; TRICLEAN 2X RESIDENTIAL COIL CLEANER; NU-CALGON 4372-24
CEV025501	CHEMICAL; ENVIRO-COIL, ECO FRIENDLY COIL CLEANING CONCENTRATE, 1 GAL.
EVP027101	CHEMICAL; NO-RINSE EVAPORATOR COIL CLEANER, 1 GALLON (4 PER CASE)
CND077301	CHEMICAL; NON-ACID FOAMING COIL CLEANER, 1 GALLON
CTG027301	CHEMICAL; EVER-CLEAN, COOLING ANTI-FOULANT, 1 GALLON
RT100S	BIG BLU LKEAK DETECTOR, QUART SPRAY
RT100G	BIG BLU LEAK DETECTOR, GALLON
SNOOP	LIQUID LEAK DETECTOR
DST00857	DISTRIBUTOR; COIL GUN - HOSE END SPRAYER
TOL01891	QT SIZE SPRAY BOTTLE
TOL05374	TOOL; TURBO TANK PRESSURIZED RINSING SPRAYER



CONDENSATE MANAGEMENT

ITEM NO.	ITEM
83809	PUMP; MINI AQUA PUMP KIT 100-250V
83849	PUMP; LIME PUMP SERIES, UNIVERSAL MINI SLIMDUCT KIT 100-250V W/ IVORY DUCT
83909	PUMP; ORANGE PUMP SERIES, UNIVERSAL MINI KIT 100-250V
83919	PUMP; ASPEN ASPMAX0UNI MAXI ORANGE PUMP KIT 110-230V FOR MINI-SPLITS
83939	PUMP; MINI WHITE PUMP SERIES, UNIVERSAL MINI KIT 100-250V
VCMA-20ULS-115V	PUMP; CONDENSATE REMOVAL, 115V, 1/30HP, 80GPH AT 1 FOOT, 1/2GAL TANK, WITH SAFTEY SWITCH LITTLE GIANT
1-ABS	PUMP; 1-ABS, 230V 60 HZ, 205 GPH 1 FT, SHALLOW PAN TANK CONDENSATE REMOVAL



HARD START KITS

ITEM NO.	ITEM
KIT07951	KIT; SUPER BOOST DST-6 HARD START KIT, 500% TORQUE MULTIPLIER



METERS



Authorized Distributor

ITEM NO.	ITEM
SC480	METER; JOB LINK POWER CLAMP METER WITH 1000 VDC
SPD2	METER; SDP2 DUAL IN-DUCT PSYCHROMETER
JL3KH6	METER; JOB LINK CHARGE AND AIR KIT
KIT18096	KIT; BG44 HVACR SERVICE TOOL BAG
SDMN5	DUAL PORT MANOMETER



Authorized Distributor

ITEM NO.	ITEM
MTR01666	METER; T6-1000 ELECTRICAL TESTER WITH FIELDSENSE, FLAT
FLUKE-116-323	METER; FLUKE-116 TRUE RMS MULTIMETER WITH TEMPERATURE, INCLUDES FLUKE-323

VACCUUM & RECOVERY



ITEM NO.	ITEM
TOL04926	TOOL; MR45 REFRIGERANT RECOVERY MACHINE
PMP02280	PUMP; RUNQUICK 8 CFM VACUUM PUMP FIELDPIECE VP85
OIL00351	OIL; VACUUM PUMP OIL - QUART OIL32



ITEM NO.	ITEM
TOL04475	TOOL; G5TWIN CYLINDER RECOVERY UNIT
PMP02201	PUMP; TEZ8 8CFM VACUUM PUMP
OIL00331	OIL; TEZOM MICRON-DRY OIL, CARTRIDGE FOR TEZ8



ITEM NO.	ITEM
DV-200N	PUMP; 7 CFM 2 STAGE PLATINUM VACUUM PUMP
F6-DP	F6-DP REFRIGERANT RECOVERY UNIT, JB , DUAL PISTON ONE HP
DVO-12	OIL; BLACK GOLD VACUUM PUMP OIL, QUART
DV-T1	HOLDER; TANK VACUUM PUMP OIL CADDY



ITEM NO.	ITEM
PMP01916	PUMP; 7CFM BULLET VACUUM PUMP, 2 STAGE, 115V/60HZ
TOL04172	TOOL; YJ-LTE REFRIGERANT RECOVERY SYSTEM, 115 V
OIL00068	OIL; VACUUM, QUARTS



ITEM NO.	ITEM
A10757-1XL	TRUBLU STARTER XL EVACUATION KIT
A10757-3	TRUBLU PROFESSIONAL EVACUATION KIT W/ CASE

TOOL BAG NECESSITIES



Authorized Distributor



Authorized Distributor

HAND TOOLS



Authorized Distributor



Authorized Distributor



Work. Perform. Outlast.
Authorized Distributor

MANIFOLDS-GAUGES-HOSES

ITEM NO.	ITEM
TOL04476	TOOL; MEGAFLOW BASICS EVACUATION KIT

*Full line of APPION Recovery Hoses and Tools available



ITEM NO.	ITEM
MTR01713	METER; SMAN MANIFOLD PLUS MICRON GAUGE 4 PORT SM480V



Full line of YELLOW JACKET Manifolds, Analog Gauges, Recovery and Charging Hoses Available.



Spend \$150 in tools and get a FREE Hooded Sweatshirt!

While supplies last. See a Parts Associate to redeem.



SPOTLIGHT BRAND TOOLS



- **A10757-1XL** | TRUBLU STARTER XL EVACUATION KIT
- **A10757-3** | TRUBLU PROFESSIONAL EVACUATION KIT WITH CASE
- **A10702** | TRUBLU BLUVAC+ PRO WIRELESS DIGITAL VACUUM GAUGE



- **MTR01642** | FLIR TG167 SPOT THERMAL CAMERA
- **MTR01644** | FLIR C3 WIFI COMPACT PROFESSIONAL THERMAL CAMERA
- **MTR01657** | FLIR E4 INFRARED CAMERA W/ MSX AND WIFI



- **TOL05338** | KLEIN ET20 WIFI BORESCOPE



RECEIVE A \$50 GIFT CARD ON US WHEN YOU PURCHASE ANY MOTOR 7.5 HP & UP

*Offer available through 11-30-2020, or while supplies last. See Store Associate for more details.



CURRENT PROMOTION



OUTDOOR UNITS

14-16 SEER XR Model A/C and Heat Pumps

- 10-Year Registered Warranty
- Climatuff Scroll Compressor
- Spine Fin Coils



RESIDENTIAL COILS

- Cased or Uncased
- Up or Downflow
- 2-5 Tons
- Non-Bleed TXV

AIR HANDLERS

GAM5 Series

- 10-Year Registered Warranty
- Double Wall Composite Cabinet
- Multi-Position Up/Down/Left/Right
- Can be made R-22 compatible
- Up to 18 SEER efficiency
- Multi-Speed ECM Motor



TAM4 Series

- 10-Year Registered Warranty
- Double Wall Composite Cabinet
- Multi-Position Up/Down/Left/Right
- Electronic Expansion Valve
- 3-Speed PSC Motor (1-4 Ton), Multi-Speed ECM Motor (5 Ton)

TEM4 Series

- 10-Year Registered Warranty
- Multi-Position Up/Down/Left/Right
- Painted Metal Cabinet



PACKAGE UNITS

XL14 AND XL15 Series

- 14 and 15 SEER
- A/C, Heat Pump, and Gas Pack Configurations
- Horizontal or downflow convertible as well as over/under
- All bolt-on options available

GAS FURNACES

S8 (80% AFUE) S-Series

- 10-Year Registered Warranty
- 9-Speed Constant Torque Motor
- Multi-Position Up/Down/Left/Right

S9 (95% AFUE) S-Series

- 10-Year Registered Warranty
- 9-Speed Constant Torque Motor
- Stainless Steel Heat Exchanger (Primary and Secondary)
- 3-Way Multi-Positioning Up/Down/Left/Right



MITSUBISHI ELECTRIC DUCTLESS MINI SPLITS

Complete line of 16-38 SEER and accessories available



TRANE PROSPACE PTAC UNITS

- 7,000-15,000 BTU
- A/C or Heat Pump
- Universal fit into most existing wall sleeves
- Multiple heat options

RUNTRU BY TRANE

- Budget-priced to compete with other manufacturers
- Complete line of indoor and outdoor equipment 2-5 Tons available
- 14 SEER



TRANE LIGHT COMMERCIAL UNITS



Foundation Line

- Budget-based quick replacement
- Built to fit most existing roof curbs
- 3-5 and 15-25 ton Gas Package Unit



Odyssey Line

- 6-25 Ton Split System (A/C, Heat Pump or Air Handler)
- Single or Dual Circuit Refrigerant System



Voyager Line

- 12.5-25 Tons Package Units
- A/C, Heat Pump or Gas Pack
- Reliatel Controls



Precedent Line

- 3-10 Tons Package Units
- A/C, Heat Pump or Gas Pack
- Reliatel Controls

All of our LCU's are available in **208/230 or 460 volt** configurations and come with a **5-year compressor and 1-year limited parts warranty**; optional extended warranties available. We offer the complete line of bolt-on accessories for each LCU listed.

AXIOM™ WATER SOURCE HEAT PUMPS



- Available in up to 5 tons:
- 277 volt / 1 Phase
 - 208 volt / 1 Phase
 - 208 volt / 3 Phase
 - 460 volt / 3 Phase



Q: Who is permitted to purchase parts or equipment from Trane Parts Centers?

A: We are strictly wholesale and not licensed to sell to the general public. Customers must provide a business license and CFC certification card to purchase from our three locations.

Q: Can I buy Trane equipment if I am not a Trane dealer?

A: We can only sell select equipment to licensed HVAC contractors that are not Trane dealers. Dealers MUST purchase through their Richmond Dealer Sales Office.

Q: How do I receive technical support from my job site?

A: For Commercial - Contact any Trane Parts Center and we can facilitate a conference call with the Trane Factory technical Support. For Residential - Call: (800) 533-4008. Technician(s) should have the equipment model and serial number ready when requesting support from job site.

Q: Do you carry parts for brands other than Trane?

A: Yes! We can order parts for all other major brands including Carrier, Lennox, York, Diaken, and many more.

Q: Who should I call for equipment registration or warranty questions?

A: Contact Trane Extended Warranty (800)-554-6413

Q: How do I receive a Comfortsite Log-in?

A: To be eligible for a Comfortsite log in, you must have an established cash or credit account with Trane Parts Center. Please call a Trane Parts Center to submit your contact information.

NOTE: If your company already has a Comfortsite account, we must have approval from your company before any additional persons can be added to the account.

Q: What is "Estimated Lead Time"?

A: Estimated lead time is the approximate number of business days it will take for a part to ship from the factory or vendor. This does NOT include weekends or any major holidays. Estimated lead time cannot be decreased by ordering an item with expedited freight.

EXAMPLE: If an item has 8-days estimated lead time and is ordered on a NEXT DAY freight order, it will arrive on the 9th business day, NOT the next day after it is ordered.

Q: How do I open a cash or credit account with Trane Parts Centers?

A: Visit damuth.com/what-we-do/parts-and-supplies/ to download the account applications.

Q: Can I pay my bill online?

A: We offer the ability to make payments via our online portal at <https://onlinepay.damuth.com>. Please call (757) 558-3332 for registration. A surcharge of 1% will be applied to all credit card transactions.

Q: Can my invoice be emailed to me?

A: To receive electronic copies of invoices or returns on the next business day after each transaction, contact a Trane Parts Center Associate with the email address you wish to have invoices sent to. Once you sign up for the electronic copies, you will no longer receive hard copy invoices via U.S. Mail.

NOTE: This policy does NOT include Trane, Inc. invoices

Q: How do I change company account information?

A: If your point of contact, mailing or shipping address has changed, please forward the updated information to our Finance Department.

Fax: (757) 558-9709

Phone: (757) 558-0200

Multiple horizontal lines for taking notes.



Use this space to jot down notes, save product information, attach receipts, etc.



TRANE[®]

HVAC Parts & Supplies

NEWPORT NEWS

507 Muller Lane
Newport News, VA 23606
757-369-9400

VIRGINIA BEACH

230 Clearfield Ave., Ste. 126
Virginia Beach, VA 23462
757-490-2390

CHESAPEAKE

1104 Cavalier Blvd.
Chesapeake, VA 23323
757-558-8585

FIND US ON   ***@TRANEPARTSHAMPTONROADS***