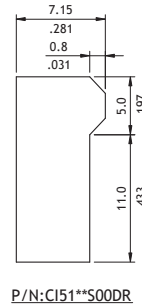
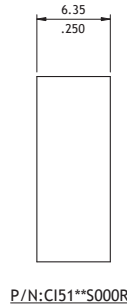
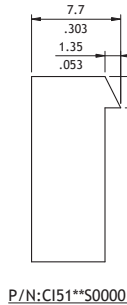
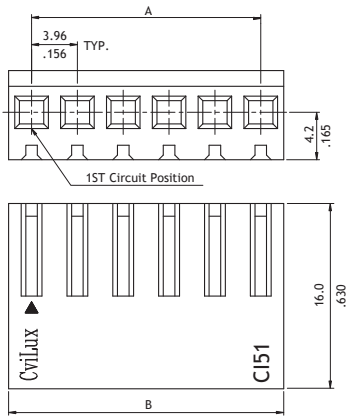
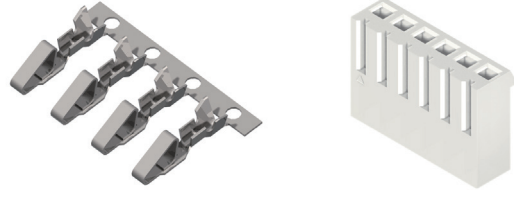


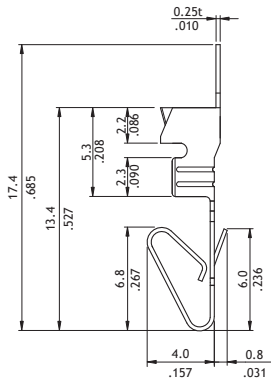
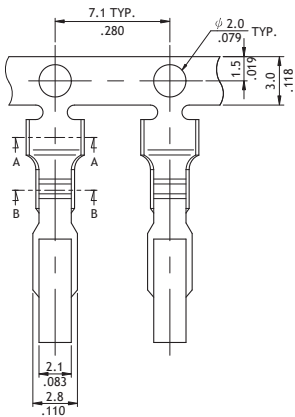
CI51 Series 3.96mm(.156") Wire to Board Connectors Housing & Terminal

- With locking ramp
- Mate with CI51, CI77 Header
- Can be used with CI51 crimp clip terminal
- Insulator: Nylon 66 UL 94V-2, Color Nature
- Terminal: Tin plated Brass or Phosphor Bronze

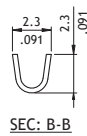
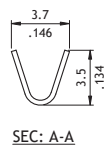
RoHS Compliant  



Circuits	Dimension	
	A	B
2	3.96(.156)	8.0(.315)
3	7.92(.312)	12.0(.472)
4	11.88(.468)	15.9(.626)
5	15.84(.624)	19.9(.783)
6	19.80(.780)	23.9(.941)
7	23.76(.935)	28.0(1.102)
8	27.72(1.091)	32.0(1.260)
9	31.68(1.247)	35.9(1.413)
10	35.64(1.403)	39.9(1.571)
11	39.60(1.559)	43.9(1.728)
12	43.56(1.715)	47.8(1.882)
13	47.52(1.871)	51.8(2.039)
14	51.48(2.027)	55.7(2.193)
15	55.44(2.183)	59.7(2.350)
16	59.40(2.339)	63.7(2.508)
17	63.36(2.494)	67.6(2.661)
18	67.32(2.650)	71.6(2.819)
19	71.28(2.806)	75.5(2.972)
20	75.24(2.962)	79.5(3.130)



Wire Range	Insulation	Reel Qty
AWG #18-#24	2.10 (.083) MAX.	5,000 PCS



Ordering Code

① C I 5 1 ② 2 0 ③ S ④ 0 0 0 0

- ① Series No.
- ② No. of Circuits: 02 to 20
- ③ S = Housing
- ④ Other Options:
 - 0000 = With Locking Ramp (Standard)
 - 000R = Without Locking Ramp
 - 00DR = Low force Locking Ramp
 - *Special options consult manufacturer

① C I 5 1 ② T 0 3 ③ 1 ④ B ⑤ E 0

- ① Series No.
- ② Type: T03 = AWG #18 ~ #24
- ③ Plating Code: 1 = Tin over Nickel
- ④ Material: P = Phosphor Bronze
- ⑤ Other Options: E0 = Standard