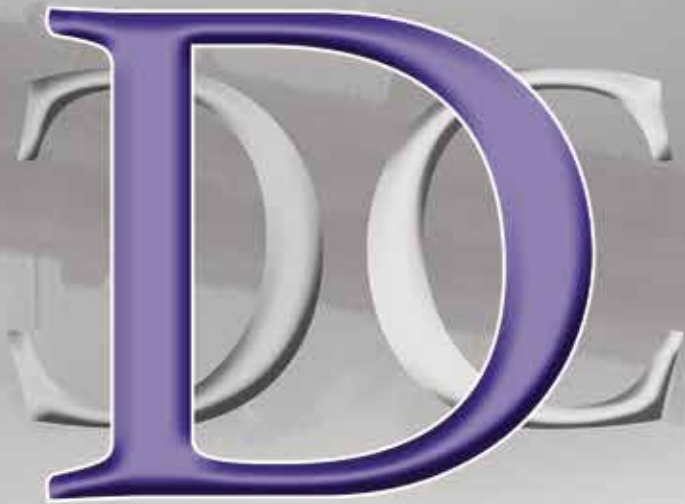


**DIECKMANN CATTLE**  
annual production sale

**OCTOBER 24, 2020**

6:30 P.M. EDT • GREENSBURG, INDIANA



**OCTOBER 24 6:30 PM EDT GREENSBURG, IN**

**SALE DAY TELEPHONES**

Quentin Dieckmann (812) 614-7083 • Cody Heavin (417) 861-4339  
Bill Dieckmann (812) 614-3006 • Seth Smoot (765) 748-6451  
Jeremy Haag (816) 516-1309

**SALE ACCOMMODATIONS**

**Hampton Inn & Suites** – (812) 663-5000  
2075 N Michigan Ave, Greensburg, IN 47240

**Holiday Inn Express & Suites** – (812) 663-5500  
915 Ann Blvd, Greensburg, IN 47240

**AUCTIONEER**

Dustin Layton • (405) 464-2455  
IN License #AU11900043

**LIVESTOCK PUBLICATIONS REPRESENTATIVES**

Casey Jentz (608) 234-1998, *Angus Journal*  
Justin Stelzer (817) 992-7059, Special Assignment  
Kent Jaecke (405) 408-2440, Special Assignment

**SALE CONSULTANTS**

Kyle Conley • (580) 618-4533 • Luke Doris • (620) 353-4114  
Barry Reimann • (605) 870-1444 • Tyler Humphrey • (419) 230-3450

**SALE BOOK PREPARED**

TOM BURKE, KURT SCHAFF, JEREMY HAAG  
AMERICAN ANGUS HALL OF FAME, at the WORLD HEADQUARTERS  
Box 660, Smithville, MO 64089-0060  
Phone 816- 532-0811 • Fax 816- 532-0851  
eMail: angushall@angushall.com • www.angushall.com

**LIABILITY**

All persons who attend the sale do so at their own risk, legal or otherwise, for their safety or for behavior of the animals. The owners, sale management firm, and the sale stall assume no liability for property loss or any accident that may occur.

**LIVESTOCK MORTALITY INSURANCE**

To properly insure your investments, James F. Bessler, Inc 815-762-2641 will be available to assist you with mortality insurance coverage.

**REGISTRATIONS**

Seth Smoot • (765) 748-6451

**SUPPLEMENTAL INFORMATION**

A supplemental sheet will be available sale day with complete and up to date calving information. Announcements from the auction block regarding the cattle selling in this sale take precedence over information listed in the catalog. Up-to-date genetic ressesive status can be viewed online at [www.angus.org](http://www.angus.org).

**TERMS AND CONDITIONS:**

Terms of the sale are cash or check on sale day or payment wired on the next business day. Cattle will sell under the suggested Terms and Conditions of the American Angus Association ([http://www.angus.org/Pub/suggested\\_sale\\_terms.pdf](http://www.angus.org/Pub/suggested_sale_terms.pdf)).

**HERD HEALTH**

All cattle will be accompanied by proper health certificated for immediate shipment.

**TRUCKING**

Truckers believed to be reliable will be available to assist in shipping your purchases.

**ONLINE BIDDING INFORMATION**

View the sale from your phone, tablet, or desktop computer and bid with confidence! Visit CCI.Live for complete sale information and online registration.



not only will you find your next junior project here but, more importantly, you are buying service that will continue to help you all show season long.

I urge all of you to come view the cattle at any time and please plan to be with us on Saturday, October 24, 2020 in Greensburg, Indiana. If you have any questions, feel free to contact the farm or the American Angus Hall of Fame at 816/532-0811.



**AMERICAN ANGUS HALL OF FAME**

PO BOX 660, SMITHVILLE, MISSOURI 64089  
816-532-0811 • WWW.ANGUSHALL.COM

Dieckmann Cattle Co. – Second Annual Event Loaded With Quality!

On behalf of the American Angus Hall of Fame, it is a pleasure to be working with the Dieckmann family on their second annual female sale to be held in Greensburg, Indiana. Quentin is dedicated to building one of the most dominant show heifer outlets in the country. He has traveled all over the country and found some of the very best cow families and show heifers and, as a result, he has been dominated the show ring.

As you flip through this catalog, you will find an array of some of the most competitive show heifer prospect you can find anywhere in the country. His passion for helping young people is second to none and



**TOM BURKE - 816-853-2697**



**KURT SCHAFF - 816-520-6447**



**JEREMY HAAG - 816-516-1309**

# SCHEDULE OF EVENTS

## FRIDAY, OCTOBER 23RD

ALL DAY. - CATTLE AVAILABLE FOR VIEWING  
*(Lights available for night viewing)*

## SATURDAY, OCTOBER 24TH

9 A.M. - CATTLE AVAILABLE FOR VIEWING  
5:30 P.M. - DINNER SERVED

### 6:30 P.M. DIECKMANN CATTLE PRODUCTION SALE

7:30-10:30 P.M. - MUSIC & SOCIAL  
*Jai Baker 3 Band*

## SALE LOCATION

4399 S COUNTY ROAD 850 EAST - GREENSBURG, INDIANA 47240

## DIRECTIONS

Take Interstate 74 to exit 143 (New Point). From the exit head south on county road 850 E for approximately 2.6 miles. 850 E will take a jog at county road 400 S. Turn west on 400 S and then immediately turn back south on 850 E. The show barn will be approximately a half mile south on the west side of the road.

---

VIDEOS WILL BE POSTED ON OUR WEBSITE  
**[WWW.DIECKMANNCATTLE.COM](http://WWW.DIECKMANNCATTLE.COM)**

---

# WE

welcome you to Dieckmann Cattle for our 2nd Annual Production Sale. We are very excited for this year's event! After years of purchasing the best

females from all across the country has allowed us to build our donor and bull battery to a remarkable level and that has allowed us to produce some of the most competitive show heifers in the country.

Our main focus here at, Dieckmann Cattle, is producing good functional cattle that will excel in the show ring and will go on and perform for the cattleman. We have done this through breeding the most sought-after cow families and genetics in the business. We strive to build attractive looking cattle that are balanced and sound, but yet offer added body, power, and look that can compete at all levels.

Cody and the crew are with the cattle every day and have worked hard to get these cattle ready for viewing and your appraisal. Please feel to contact Cody or myself with any questions, cattle are always available for viewing. We look forward to seeing you here at Dieckmann Cattle on October 24th! *-Quentin*



SUCCESS WITH A BRAND.



# Special Thanks!



My parents, Bill and Becky, thank you for the sacrifices that you have made for me to be able to do this. I appreciate your effort and willingness to help, none of this is possible without you guys. I am lucky to have you two as my parents, I thank God every day for you guys. I'm not the person I am today without you. - Quentin



Cody Heavin, thank you for all you do. Going above and beyond has become a normal, your dedication to our program is unmatched. Your hard work does not go unnoticed and we appreciate it. Thanks for becoming one of the family to my nieces and nephews. You are a huge asset to our program. - Quentin



## **DIECKMANN CATTLE COMPANY**

4399 S COUNTY ROAD 850 EAST - GREENSBURG, INDIANA 47240

Quentin Dieckmann (812) 614-7083 • Cody Heavin (417) 861-4339  
Bill Dieckmann (812) 614-3006 • Seth Smoot (765) 748-6451

Dieckmann Cattle will retain embryo interest in several females in the offering, check update sheet on sale day or call for details & 2 flushes on all cattle not retaining interest in. We also retain the opportunity to obtain a DNA cell line on all cattle selling in this sale. All 2020 heifers were Angus GS tested and Parent Verified through AGI.

Dieckmann Cattle will keep and show your cattle for you as we take pride in our customers and our cattle's success. Please contact Quentin with details to insure we continue our very best service for you.



# DCC

## *junior incentive program.*

	<b>YEAR 1</b>	<b>YEAR 2</b>	<b>YEAR 3</b>	<b>YEAR 4</b>	<b>YEAR 5</b>
<b>LEVEL 1: KANSAS CITY, LOUISVILLE, DENVER, NATIONAL JUNIOR SHOW</b>					
Grand Champion	\$1,000	\$1,250	\$1,500	\$1,750	\$2,000
Reserve Grand Champion	\$750	\$1,000	\$1,250	\$1,500	\$1,750
Division Champion	\$500	\$750	\$1,000	\$1,250	\$1,500
Reserve Division Champion	\$250	\$500	\$750	\$1,000	\$1,250
Class Winner	\$100	\$250	\$500	\$750	\$1,000
<b>LEVEL 2: ALL STATE FAIR, STATE SHOWS, REGIONALS</b>					
Grand Champion	\$500	\$750	\$1,000	\$1,250	\$1,500
Reserve Grand Champion	\$400	\$600	\$750	\$1,000	\$1,250
Division Champion	\$300	\$500	\$650	\$750	\$1,000
Reserve Division Champion	\$200	\$250	\$400	\$500	\$750
<b>LEVEL 3: COUNTY FAIRS, JACKPOTS</b>					
Grand Champion	\$250	\$250	\$250	\$250	\$250
Reserve Grand Champion	\$100	\$100	\$100	\$100	\$100

Eligibility Show heifers must be purchased from Dieckmann Cattle and must be bought and registered in the junior's name. The year you purchase will determine which year you qualify under the program. To be eligible, you must submit the proper information on the verification form AND provide a professional digital photograph. The ONLY shows eligible are junior shows. This is an incentive program and not a scholarship program. After paperwork is submitted, you will be granted sale credit in the junior's name for the following year after approval.  
 \*Maximum award amount issued will not exceed highest award amount listed for that purchase year.







**1**

**ANGUS**

**DIECKMANN FRONTIER GAL 0735**

calved **5/28/20** cow **+\*19794391** tattoo **0735**

Sma Watchout 482  
**CONLEY EXPRESS 7211**  
 +\*18941522 DPL Sandy 3040  
 5T Power Chip 4790  
**CONLEY WCC FRONTIER GAL 7776**  
 +\*18943617 WCC Frontier Gal 893

Silveiras Watchout 0514  
 2K Beauty 961  
 Silveiras Style 9303  
 KNC Cabin Creek Sandy 804  
 EXAR Blue Chip 1877B  
 5T Miss Wix 8002  
 Exar Lutton 1831  
 WCC Frontier Gal 39

CED	BW	WW	YW	MILK	CW	MARB	REA	\$W	\$B
1	2.6	64	95	10	39	0.54	0.4	49	135

- This special sale attraction is an elite daughter of the \$400,000 valued Conley Express 7211, a past Fort Worth Stock Show Champion, and the featured foundation Frontier Gal donor female in the Dieckmann Cattle Company program, Conley WCC Frontier Gal 7776, who is the Fourth Overall Champion and the Champion Angus Female of the 2018 Winter Warm Up for Carter Hoge of Illinois and she was the top-selling heifer calf of the Conley Cattle Company Fall Online Production Sale.
- WCC Frontier Gal 893, her granddam, is the many-time and popular champion for the Wallace family in Missouri who stamped herself as an outstanding donor female in the popular Frontier Gal family and was the 2009 American Royal Sr. Heifer Calf Champion and a champion at the Missouri State Preview Show and State Fair.
- Dam is a maternal sister to the \$100,000 Lot 1 and top-selling female of the 2015 Conley Cattle sale, Conley PR Frontier Gal 541, going to Double G Ranch of Oklahoma. WCC Frontier Gal 39, the third-generation dam, is a past National Western Stock Show Grand Champion and also selected as the Grand Champion of the National Junior Angus Show, Ozark State Fair, and Iowa State Fair.
- Here is a standout May heifer calf that offers unlimited genetic potential and the opportunity to compete at every level.



**CONLEY WCC FRONTIER GAL 7776**  
 Dam of Lot 1



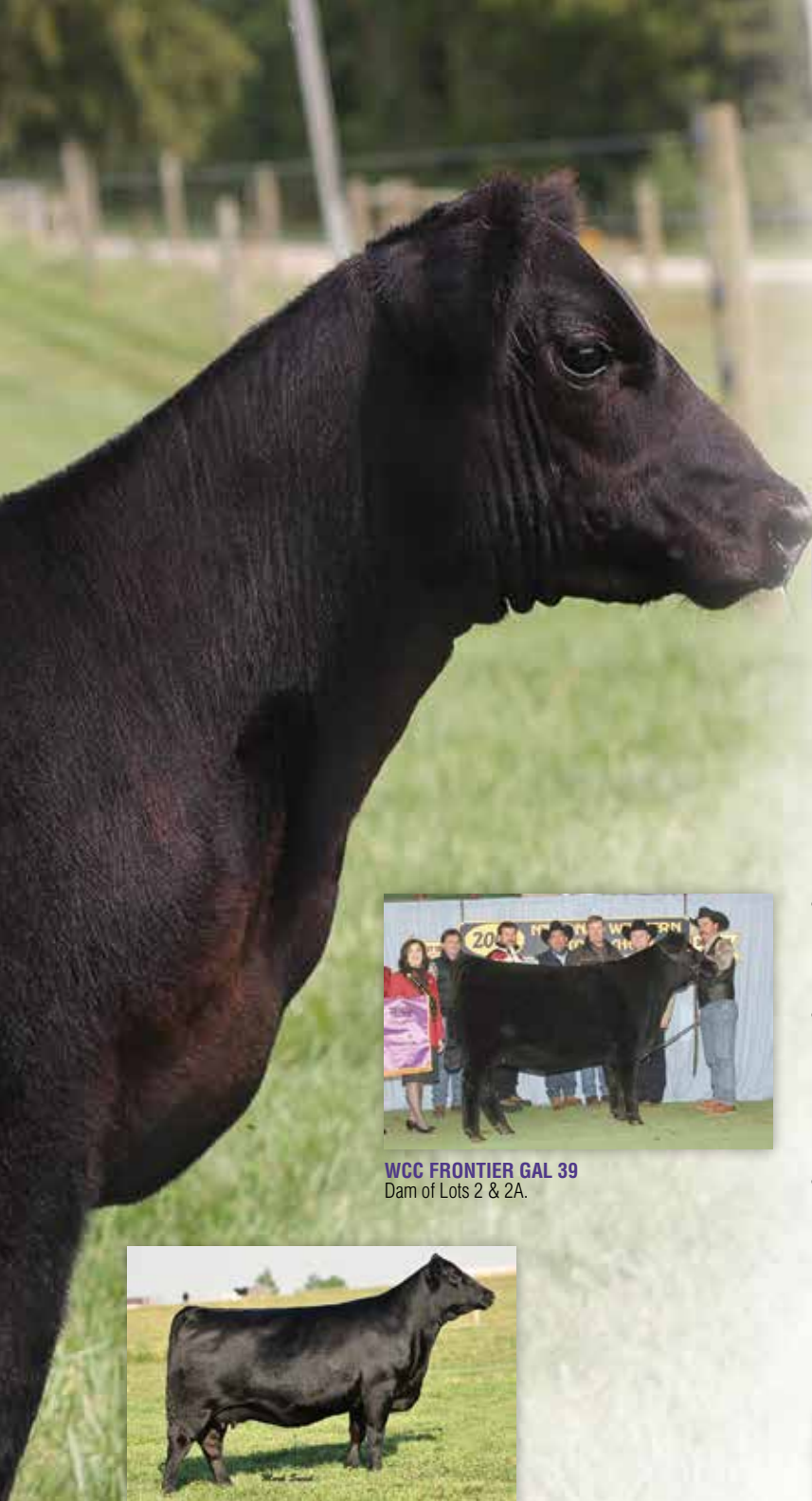
**WCC FRONTIER GAL 893**  
 Granddam of Lot 1



**LOT 1 | DIECKMANN FRONTIER GAL 0735**







**2** **DIECKMANN FRONTIER GAL 0110**  
 ANGUS calved 5/3/20 cow +\*19786188 tattoo 0110

**EXAR BLUE CHIP 1877B**  
 +\*16980412 Dameron First Class  
 Greens Princess 1012  
 B/R New Frontier 095

**WCC FRONTIER GAL 39**  
 14434020 PAF Travel Gal 8712

EXG RS First Rate S903 R3  
 Dameron Northern Miss 3114  
 Greens Premium 7578  
 Greens Princess 7418  
 B/R New Design 036  
 White Fence Pride H1  
 OCC Backstop 888B  
 PAF Lady Emulation 6528

CED	BW	WW	YW	MILK	CW	MARB	REA	\$W	\$B
1	4.7	62	108	16	45	0.54	0.38	38	131



**WCC FRONTIER GAL 39**  
 Dam of Lots 2 & 2A.



**EXAR FRONTIER GAL 1447**  
 The \$80,000 maternal sister to  
 Lots 2 & 2A.



**EXAR FRONTIER GAL 3734**  
 The \$150,000 maternal sister of  
 Lots 2 & 2A.

- A royal breeding piece by the past ROV Show Bull of the Year, EXAR Blue Chip 1877B, and a direct daughter of one of the all-time great females and past National Western, National Junior Angus Show, Ozark State Fair, and Iowa State Fair Champion, WCC Frontier Gal 39.
- EXAR Frontier Gal 3734, one of the most successful daughters of the featured Frontier Gal 39 who went on to be named the 2014 Res. Grand Champion Female of the American Royal ROV, the 2014 Grand Champion Female of the National Junior Angus Show, and the Grand Champion Female of the 2015 National Western ROV Angus Show; she has produced over \$2 million in progeny sales to date for Express Ranches.
- Other maternal sisters include, EXAR Frontier Gal 1405, is a past Grand Champion of the Western National Angus Futurity and has produced over \$2.5 million in progeny sales to date at Express Ranches. She went on to produce the 2019 Grand Champion Female of the Western National Angus Futurity and the Res. Grand Champion Female of the Fort Worth Stock Show. Another maternal sisters include WCC Frontier Gal 893, the 2009 American Royal Sr. Heifer Calf Champion, and Missouri Preview Show and Missouri State Fair division champion; she is also the mother of the dam of Lot 1.



**LOT 2 | DIECKMANN FRONTIER GAL 0110**







**LOT 2A | DIECKMANN FRONTIER GAL 0245**



**2A** **DIECKMANN FRONTIER GAL 0245**  
 calved **3/19/20** cow **+\*19786189** tattoo **0245**  
**ANGUS**

**EXAR BLUE CHIP 1877B**  
 +\*16980412  
 Dameron First Class  
 Greens Princess 1012  
 B/R New Frontier 095  
**WCC FRONTIER GAL 39**  
 14434020  
 PAF Travel Gal 8712

EXG RS First Rate S903 R3  
 Dameron Northern Miss 3114  
 Greens Premium 7578  
 Greens Princess 7418  
 B/R New Design 036  
 White Fence Pride H1  
 OCC Backstop 888B  
 PAF Lady Emulation 6528

CED	BW	WW	YW	MILK	CW	MARB	REA	\$W	\$B
5	2.7	53	89	26	32	0.53	0.34	53	111



**WCC FRONTIER GAL 893**  
 Maternal sister to Lots 2 and 2A.



**EXAR FRONTIER GAL 1405**  
 The 2013 Grand Champion Owned Female at the WNAF and maternal sister to Lots 2 and 2A.

- A royal breeding piece by the past ROV Show Bull of the Year, EXAR Blue Chip 1877B, and a direct daughter of one of the all-time great females and past National Western, National Junior Angus Show, Ozark State Fair, and Iowa State Fair Champion, WCC Frontier Gal 39.
- EXAR Frontier Gal 3734, one of the most successful daughters of the featured Frontier Gal 39 who went on to be named the 2014 Res. Grand Champion Female of the American Royal ROV, the 2014 Grand Champion Female of the National Junior Angus Show, and the Grand Champion Female of the 2015 National Western ROV Angus Show; she has produced over \$2 million in progeny sales to date for Express Ranches.
- Other maternal sisters include, EXAR Frontier Gal 1405, is a past Grand Champion of the Western National Angus Futurity and has produced over \$2.5 million in progeny sales to date at Express Ranches. She went on to produce the 2019 Grand Champion Female of the Western National Angus Futurity and the Res. Grand Champion Female of the Fort Worth Stock Show. Another maternal sisters include WCC Frontier Gal 893, the 2009 American Royal Sr. Heifer Calf Champion, and Missouri Preview Show and Missouri State Fair division champion; she is also the mother of the dam of Lot 1.



# DIECKMANN POLLY FAMILY



LOT 3 | **DIECKMANN POLLY 0966**



LOT 4 | **DIECKMANN POLLY 0212**

**3**  
ANGUS calved **3/27/20** cow **\*19783266** tattoo **0966**

**5T POWER CHIP 4790**

\*17956297

EXAR Blue Chip 1877B

5T Miss Wix 8002

Dameron First Class  
Greens Princess 1012

BC Matrix 4132  
Circle Oak Miss Wix 4014

Penners-CC Double Black 2257

VDAR Polly 9682

PR Black Friday 0244  
PR 629 205-554

VDAR New Design 2122  
VDAR Polly 7686

**VDAR POLLY 7966**

18945952

CED	BW	WW	YW	MILK	CW	MARB	REA	\$W	\$B
5	2.5	57	89	15	22	0.19	0.49	45	81

- A direct daughter of 5T Power Chip 4790, a past 2016 Fort Worth Stock Show Res. Grand Champion and the Champion Bull of the Canadian Royal Winter Fair and Texas State Fair Champion stems back to a daughter of the \$140,000 Penners-CC Double Black 2257 and the featured member of Select Sires AI stud back to a Pathfinder granddam, VDAR Polly 9682.
- This female stems from a dam who was bred in the Van Dyke Angus Ranch program in Manhattan, Montana and a featured donor female in the Dieckmann Cattle Company program.

**4**  
ANGUS calved **4/2/20** cow **\*19783264** tattoo **0212**

**DIECKMANN POLLY 0212**

**CONLEY EXPRESS 7211**

+\*18941522

Sma Watchout 482

DPL Sandy 3040

Silveiras Watchout 0514  
2K Beauty 961

Silveiras Style 9303  
KNC Cabin Creek Sandy 804

Penners-CC Double Black 2257

**VDAR POLLY 7966**

18945952

VDAR Polly 9682

PR Black Friday 0244  
PR 629 205-554

VDAR New Design 2122  
VDAR Polly 7686

CED	BW	WW	YW	MILK	CW	MARB	REA	\$W	\$B
-6	5.3	61	88	23	29	0.44	0.32	50	100

- Direct daughters of the \$400,000 Fort Worth Stock Show Champion, Conley Express 7211, back to a daughter of the \$140,000 Penners-CC Double Black 2257 and the featured member of Select Sires AI stud back to a Pathfinder granddam, VDAR Polly 9682.
- These outstanding females stem from a dam who was bred in the Van Dyke Angus Ranch program in Manhattan, Montana and a featured donor female in the Dieckmann Cattle Company program.

LOT **A**  
ANGUS calved **3/27/17** bull **\*18941522** tattoo **7211**

**CONLEY EXPRESS 7211**

**SMA WATCHOUT 482**

\*17836525

Silveiras Watchout 0514

2K Beauty 961

BC Lookout 7024  
Silveiras Elba 6546

SAV Brilliance 8077  
2K Beauty 2004

Silveiras Style 9303

KNC Cabin Creek Sandy 804

Gambles Hot Rod  
Silveiras Elba 2520

BC Lookout 7024  
KNC Cabin Creek Sandy

**DPL SANDY 3040**

+\*17592949

CED	BW	WW	YW	MILK	CW	MARB	REA	\$W	\$B
-4	3.5	58	96	17	29	0.63	0.05	40	118

• FOR REFERENCE ONLY









**4A**  
ANGUS

**DIECKMANN POLLY 0303**

calved **2/28/20** cow +\***19783265** tattoo **0303**

**CONLEY EXPRESS 7211**  
+\*18941522  
Sma Watchout 482  
DPL Sandy 3040  
Silveiras Watchout 0514  
2K Beauty 961  
Silveiras Style 9303  
KNC Cabin Creek Sandy 804  
Penner-CC Double Black 2257  
PR Black Friday 0244  
PR 629 205-554  
**VDAR POLLY 7966**  
18945952  
VDAR Polly 9682  
VDAR New Design 2122  
VDAR Polly 7686

CED	BW	WW	YW	MILK	CW	MARB	REA	\$W	\$B
-4	5.2	58	84	22	22	0.68	0.34	47	103

- Direct daughters of the \$400,000 Fort Worth Stock Show Champion, Conley Express 7211, back to a daughter of the \$140,000 Penners-CC Double Black 2257 and the featured member of Select Sires AI stud back to a Pathfinder granddam, VDAR Polly 9682.
- These outstanding females stem from a dam who was bred in the Van Dyke Angus Ranch program in Manhattan, Montana and a featured donor female in the Dieckmann Cattle Company program.



**VDAR POLLY 7966**  
Dam of Lots 4 & 4A..



**CONLEY EXPRESS 7211**  
Sire of Lots 4 & 4A..



LOT 4A | **DIECKMANN POLLY 0303**



**LOT 5 | DIECKMANN SANDY 0950**

**5** **DIECKMANN SANDY 0950**  
 calved **1/15/20** cow **19783267** tattoo **0950**  
**ANGUS**

**STEVENSON TURNING POINT**

+\*18434747

Plattemere Weigh Up K360 Sitz Upward 307R  
 Barbara of Plattemere 337

Stevenson Pride I167x SAV Bismarck 5682  
 FSHK Pride 180

HA Relevant 6022 HA Outside 3008  
 HA Blackcap Lady 0855

**CONLEY SANDY 8950**

+\*19181594

Silveiras S Sis Sandy 2355 Silveiras Style 9303  
 KNC Cabin Creek Sandy 804

CED	BW	WW	YW	MILK	CW	MARB	REA	\$W	\$B
I+10	I+.5	I+55	I+97	I+18	I+33	I+.21	I+.63	51	118

- A direct daughter of the \$70,000 GENEX Beef AI sire, Stevenson Turning Point, stems back Conley Sandy 8950, who was the \$14,000 selection of Dieckmann Cattle Company through the 2018 Conley Fall Production Sale.
- She is a double-digit calving-ease direct, low birthweight, high-maternal female that reads with a beautiful pedigree.
- Maternal sisters to the dam include the \$130,000 Conley Sandy 8522, who was named the 2018 North American Spring Heifer Calf Champion and the \$80,000 American Royal Late Junior Heifer Calf Champion and the 2019 Arizona National Supreme Champion and the \$80,000 2018 Res. Grand Champion of the North American.



**CONLEY SANDY 8522**

The \$130,000 three-quarter sister to Lot 5 who was the 2018 NAILE Spring Heifer Calf Champion.



**CONLEY SANDY 7084**

The 2018 North American Res. Grand Champion Female and \$80,000 maternal sister to the dam of Lot 5.



**CONLEY SANDY 7305**

The 2018 Res. Grand Champion Female of the Nebraska State Fair and the \$105,000 maternal sister to the dam of Lot 5.





LOT 6 | **DIECKMANN SANDY 104H ET**



**CONLEY NO LIMIT**  
Full sib to dam of Lot 6.



**SILVEIRAS S SIS SANDY 2355**  
The maternal granddam of Lots 6 & 6A.



LOT 6A | **DIECKMANN SANDY 231H ET**

**6**  
**MAINE**  
**ANGUS**

**DIECKMANN SANDY 104H ET**

calved **5/2/20** cow **512443** tattoo **104H**

**COWAN'S ALI 4M**

307184

NBH Polled Energizer 688E JF War Chief  
Dukes Marvella 88X

FJH Countess 115H FJH Legacy 130E  
ZTA Miss Black Lucy 110D

EXAR Blue Chip Dameron First Class  
Greens Princess 1012

**CONLEY SANDY 8412**

19180560

Silveiras S Sis Sandy 2355 Silveiras Style 9303  
KNC Cabin Creek Sandy 804

**6A**  
**MAINE**  
**ANGUS**

**DIECKMANN SANDY 231H ET**

calved **1/2/20** cow **512444** tattoo **231H**

**COWAN'S ALI 4M**

307184

NBH Polled Energizer 688E JF War Chief  
Dukes Marvella 88X

FJH Countess 115H FJH Legacy 130E  
ZTA Miss Black Lucy 110D

EXAR Blue Chip Dameron First Class  
Greens Princess 1012

**CONLEY SANDY 8412**

19180560

Silveiras S Sis Sandy 2355 Silveiras Style 9303  
KNC Cabin Creek Sandy 804

- Backed by the popular AI sire Cowan's Ali 4M, and out of Sandy 8412 a direct brother to the up-and- coming featured herd sire in the Conley Cattle program, Conley No Limit.
- Maternal sister to this female is a Dieckmann Cattle donor and top-selling heifer calf of the 2018 Fall Conley Cattle Sale, Conley Sandy 8522, who went on to be named 2018 North American Spring Heifer Calf Champion and another maternal sister was \$80,000 feature through the fall Conley Cattle Sale, Conley Sandy 8900, who was 2018 American Royal Late Jr. Heifer call Champion.
- A Full siter to the granddam was the second top-selling cow of the 2019 Conley Sale at \$27,000.

# DIECKMANN SANDY FAMILY



LOT 7 | **DIECKMANN SANDY 0713**



**CONLEY SANDY 7271**  
A full sister to the dam of Lot 7.

**7** **DIECKMANN SANDY 0713**  
ANGUS calved **5/7/20** cow **+\*19794392** tattoo **0713**

**5T POWER CHIP 4790**  
\*17956297  
EXAR Blue Chip 1877B  
5T Miss Wix 8002  
Sma Watchout 482  
DPL Sandy 3040

**CONLEY SANDY 7250**  
+\*18850666  
Dameron First Class  
Greens Princess 1012  
BC Matrix 4132  
Circle Oak Miss Wix 4014  
Silveiras Watchout 0514  
2K Beauty 961  
Silveiras Style 9303  
KNC Cabin Creek Sandy 804

CED	BW	WW	YW	MILK	CW	MARB	REA	\$W	\$B
7	2.7	60	100	11	29	0.63	0.11	38	107

- A direct daughter of 5T Power Chip 4790, a past 2016 Fort Worth Stock Show Res. Grand Champion and Grand Champion of the Canadian Winter Royal Fair and Texas State Fair Champion Bull. She stems back to Conley Sandy 7250, who is a full sister to the \$400,000 record seller, Conley Express 7211.
- Full sister-in-blood to this female, Conley Sandy 9486, was the \$30,000 feature through the 2019 Conley Cattle Fall Production Sale.
- Granddam was the 2015 Res. Grand Champion Owned Female of the National Junior Angus Show and Grand Champion Female of the 2014 Western National Angus Futurity Junior Show.

**LOT B** **5T POWER CHIP 4790**  
ANGUS calved **2/13/14** bull **\*17956297** tattoo **4790**

**EXAR BLUE CHIP 1877B**  
\*16980412  
Dameron First Class  
Greens Princess 1012  
BC Matrix 4132  
Circle Oak Miss Wix 4014

**5T MISS WIX 8002**  
\*16215091  
EXG RS First Rate S903 R3  
Dameron Northern Miss 3114  
Greens Premium 7578  
Greens Princess 7418  
OCC Emblazon 854E  
CAF Pure Pride Ext 99  
BR Midland  
Circle Oak Miss Wix 2050

CED	BW	WW	YW	MILK	CW	MARB	REA	\$W	\$B
11	.4	62	96	13	29	0.72	0.53	51	115



• FOR REFERENCE ONLY





LOT 8 | **DIECKMANN PURE PRIDE 0536**



**CONLEY PURE PRIDE 7117**  
The \$11,000 three-quarter sister to Lot 8.



**CONLEY EXPRESSION 9213**  
Maternal brother to the dam of Lot 8.



**DOUBLE R BAR PURE PRIDE Z246**  
Granddam of Lot 8.

**8**  
ANGUS

**DIECKMANN PURE PRIDE 0536**

calved **1/9/20** cow **\*19783268** tattoo **0536**

**5T POWER CHIP 4790**

\*17956297

EXAR Blue Chip 1877B

5T Miss Wix 8002

Dameron First Class  
Greens Princess 1012

BC Matrix 4132  
Circle Oak Miss Wix 4014

Stevenson Turning Point

Plattemere Weigh Up K360  
Stevenson Pride 1167x

**CONLEY PURE PRIDE 8536**

+\*19180428

Double R Bar Pure Pride Z246

PR Black Friday 0244  
Bohi Pure Pride 6096

CED	BW	WW	YW	MILK	CW	MARB	REA	\$W	\$B
11	0.5	54	80	20	21	0.54	0.5	57	100

- A daughter of 5T Power Chip 4790 back to the \$70,000 Stevenson Turning Point and the featured Pure Pride family.
- Dam is a maternal sister to the 2020 National Junior Angus Show Owned Res. Late Sr. Champion, the 2020 Central Illinois Preview Show Fourth Overall Champion, and the 2019 North American ROV Angus Show Res. Late Sr. Heifer Calf Champion.
- Fourth-generation dam is a full sister to the GENEX Beef AI sire, BC Matrix 4132, and a maternal brother to the dam was the fourth top-selling bull of the 2019 spring Conley sale, Conley Hyline 8045.





**LOT 9 |  
DIECKMANN MULBEN PRIDE 0755**



**LOT 9B |  
DIECKMANN MULBEN PRIDE 0590**





LOT 9A | **DIECKMANN MULBEN PRIDE 0638**



**DIECKMANN EXPRESS 0232**  
Full brother to Lots 9-9B, and is Lot 10.



**CONLEY PR MULBEN PRIDE 7188**  
Dam of Lots 9 - 10.

**9** **DIECKMANN MULBEN PRIDE 0755**  
ANGUS calved **5/20/20** cow **+\*19794398** tattoo **0755**

**9A** **DIECKMANN MULBEN PRIDE 0638**  
ANGUS calved **5/12/20** cow **+\*19794396** tattoo **0638**

**9B** **DIECKMANN MULBEN PRIDE 0590**  
ANGUS calved **4/5/20** cow **+\*19794394** tattoo **0590**

**CONLEY EXPRESS 7211**  
+\*18941522 Sma Watchout 482  
DPL Sandy 3040 Silveiras Watchout 0514  
2K Beauty 961  
**CONLEY PR MULBEN PRIDE 7188**  
+\*18990782 5T Power Chip 4790  
PR Lady 909 4200-587 Silveiras Style 9303  
KNC Cabin Creek Sandy 804  
EXAR Blue Chip 1877B  
5T Miss Wix 8002  
SAV Net Worth 4200  
PR 587 205-537

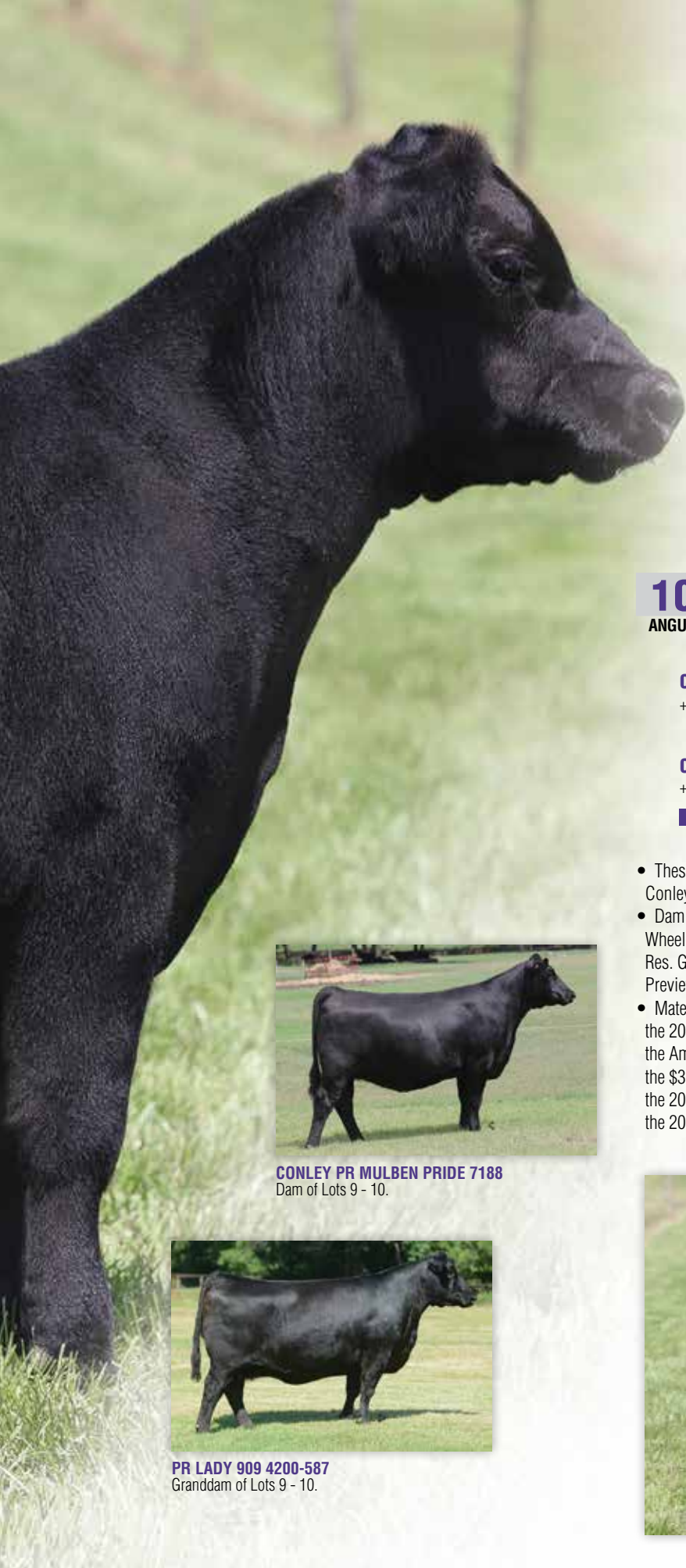
CED	BW	WW	YW	MILK	CW	MARB	REA	\$W	\$B
3	2.4	53	77	18	23	0.63	0.3	47	105

- These special sale attractions are by the \$400,000 Fort Worth Champion, Conley Express 7211, back to the ever popular Mulben Pride family.
- Dam is a full sister to Conley PR Mulben Pride 7118, a selection of the Wheeler family through the 2017 Conley sale who went on to be named the Res. Grand Champion Owned Female of the 2018 Missouri Junior Angus Preview Show and Fifth Overall Champion.
- Maternal sisters to the dam also include the \$113,000 top-selling female of the 2013 Conley sale who was named the 2014 Grand Champion Female of the American Royal. Another maternal sister, Penners Mulben Pride 528, was the \$30,000 top-selling cow of the 2019 fall Conley sale and was also named the 2019 Mature Cow/Calf Champion at the National Junior Angus Show and the 2016 Res. Supreme Champion of the Tulsa State Fair.









**10**  
ANGUS

**DIECKMANN FAST LANE 0232**

calved **4/4/20**      bull **+\*19794405**      tattoo **0232**

Sma Watchout 482

Silveiras Watchout 0514  
2K Beauty 961

**CONLEY EXPRESS 7211**

+\*18941522

DPL Sandy 3040

Silveiras Style 9303  
KNC Cabin Creek Sandy 804

5T Power Chip 4790

EXAR Blue Chip 1877B  
5T Miss Wix 8002

**CONLEY PR MULBEN PRIDE 7188**

+\*18990782

PR Lady 909 4200-587

SAV Net Worth 4200  
PR 587 205-537

CED	BW	WW	YW	MILK	CW	MARB	REA	\$W	\$B
-6	5.6	51	75	15	18	0.58	0.43	29	112

- These special sale attractions are by the \$400,000 Fort Worth Champion, Conley Express 7211, back to the ever popular Mulben Pride family.
- Dam is a full sister to Conley PR Mulben Pride 7118, a selection of the Wheeler family through the 2017 Conley sale who went on to be named the Res. Grand Champion Owned Female of the 2018 Missouri Junior Angus Preview Show and Fifth Overall Champion.
- Maternal sisters to the dam also include the \$113,000 top-selling female of the 2013 Conley sale who was named the 2014 Grand Champion Female of the American Royal. Another maternal sister, Penners Mulben Pride 528, was the \$30,000 top-selling cow of the 2019 fall Conley sale and was also named the 2019 Mature Cow/Calf Champion at the National Junior Angus Show and the 2016 Res. Supreme Champion of the Tulsa State Fair.



**CONLEY PR MULBEN PRIDE 7188**  
Dam of Lots 9 - 10.



**PR LADY 909 4200-587**  
Granddam of Lots 9 - 10.

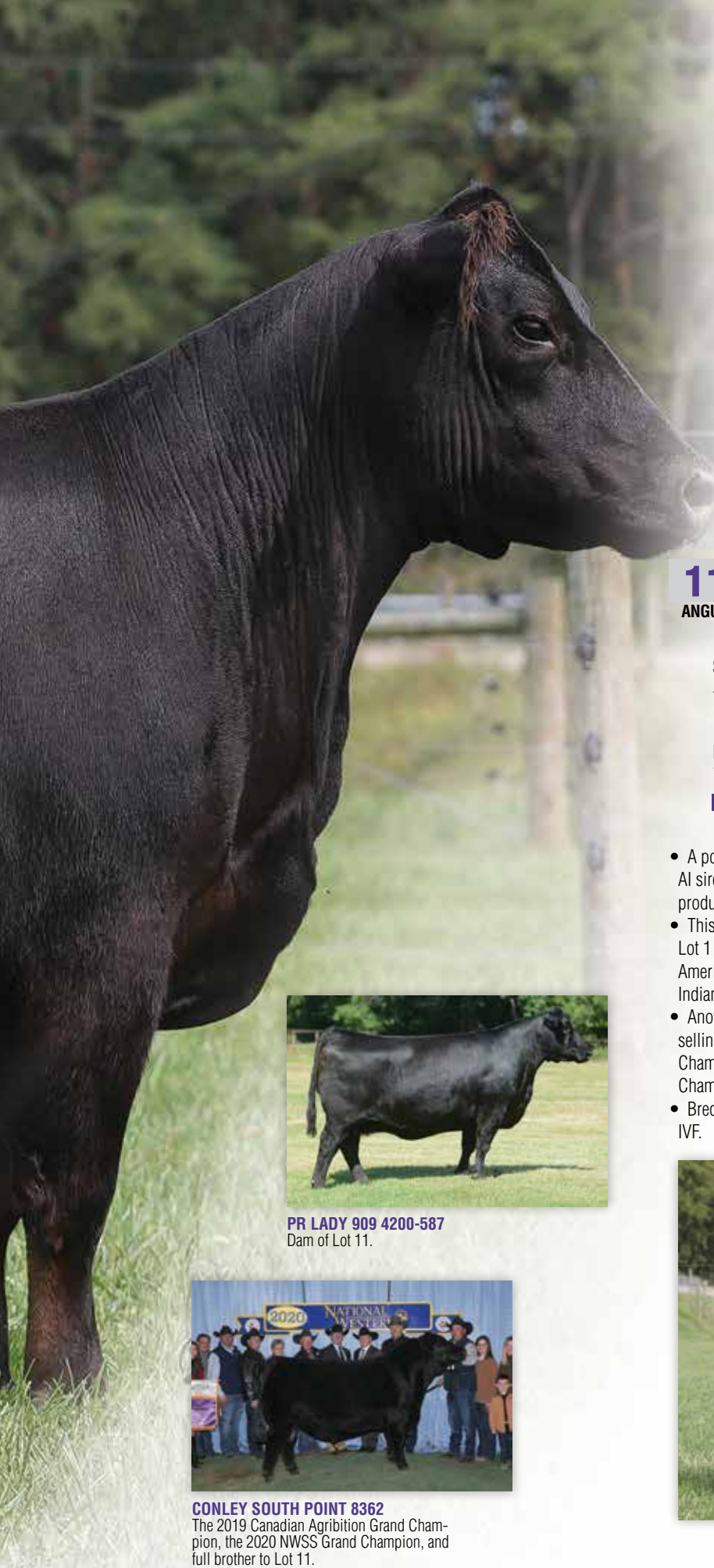


**LOT 10 | DIECKMANN FAST LANE 0232**









**11**  
ANGUS

**CONLEY MULBEN PRIDE 8105**

calved **2/12/18** cow **+\*19181141** tattoo **8105**

**STEVENSON TURNING POINT**

+\*18434747

Plattemere Weigh Up K360  
Sitz Upward 307R  
Barbara of Plattemere 337

Stevenson Pride I167x

SAV Bismarck 5682  
FSHK Pride 180

SAV Net Worth 4200

SAV 8180 Traveler 004  
SAV May 2410

**PR LADY 909 4200-587**

\*16676486

PR 587 205-537

BAR Ext Traveler 205  
PR 537 380-398

CED	BW	WW	YW	MILK	CW	MARB	REA	\$W	\$B
15	-0.5	49	83	27	33	0.39	0.86	57	124

- A powerful bred heifer by Stevenson Turning Point, the \$70,000 GENEX Beef AI sire who stems back to PR Lady 909 4200-587, one of the top income-producing females in the Conley Cattle program.
- This powerful bred heifer is a maternal sister to the \$113,500 top-selling Lot 1 female of the 2013 Conley sale who went on to be named the 2014 All-American Royal Grand Champion for the Nowatzke family of Michigan City, Indiana.
- Another maternal sister, Penners Mulben Pride 528, was the \$30,000 top-selling cow of the 2019 fall Conley sale and was the 2019 Mature Cow Calf Champion at the National Junior Angus Show and the 2016 Res. Supreme Champion at the Tulsa State Fair.
- Bred to calve July 1, 2020 to CONLEY PROWESS. Available for immediate IVF.



**PR LADY 909 4200-587**  
Dam of Lot 11.



**CONLEY SOUTH POINT 8362**  
The 2019 Canadian Agribition Grand Champion, the 2020 NWSS Grand Champion, and full brother to Lot 11.



**LOT 11 | CONLEY MULBEN PRIDE 8105**



LOT 11A | **DCC 0/607**

**11A** calved **2/12/10** cow **477592** tattoo **607X**  
**MAINTEINER**

<b>OCC MACHINIST 734M</b> 14349350	OCC Focus 813F OCC Dixie Erica 688J CMAC Hard Core 5/706	Basin Rainmaker 654X Dixie Erica of CH 1019 OCC Emblazon 854E OCC Dixie Erica 816B MCF MR Debs Girl Payoff CMAC Dandy's Samantha ET The Witch Doctor 3/706
---------------------------------------	---	---

- The resulting pregnancy is a direct daughter of 5T Power Chip 4790, the 2016 Fort Worth Stock Show Res. Grand Champion, Res. Grand Champion Bull of the Canadian Royal Winter Fair and past Texas State Fair Champion and back by the Mulben Pride cow family.
- Mother of pregnancy is a full sib to the 2020 Grand Champion Bull at the National Western Stock Show.
- On a flush to I-80 three heifers average \$21,500, donor offered with great pregnancy.
- Safe with sexed heifer embryo, due February 21, 2021, 5T Power Chip 4790 X Conley Mulben Pride 8105.



I-80 daughter by the great DCC 0/607



I-80 daughter by the great DCC 0/607



**CONLEY MULBEN PRIDE 8105**  
 Donor dam & Lot 11 of sexed heifer embryo selling with Lot 11A,.



- A beautiful February heifer calf by the \$75,000 GENEX Beef AI sire, Stevenson Turning Point, back to the ever popular Mulben Pride family.
- Dam is a full sister to Conley PR Mulben Pride 7118, a selection of the Wheeler family through the 2017 Conley sale who went on to be named the Res. Grand Champion Owned Female of the 2018 Missouri Junior Angus Preview Show and Fifth Overall Champion.
- Maternal sisters to the dam also include the \$113,000 top-selling female of the 2013 Conley sale who was named the 2014 Grand Champion Female of the American Royal. Another maternal sister, Penners Mulben Pride 528, was the \$30,000 top-selling cow of the 2019 fall Conley sale and was also named the 2019 Mature Cow/Calf Champion at the National Junior Angus Show and the 2016 Res. Supreme Champion of the Tulsa State Fair.



LOT 12 I

**DIECKMANN MULBEN PRIDE 0188**



**CONLEY SOUTH POINT 8362**  
International Champion & maternal brother to the dam of Lot 12.

**12** **DIECKMANN MULBEN PRIDE 0188**  
ANGUS calved **2/26/20** cow \***19783269** tattoo **188**

<b>STEVENSON TURNING POINT</b> +*18434747	Plattemere Weigh Up K360 Stevenson Pride I167x	Sitz Upward 307R Barbara of Plattemere 337							
<b>CONLEY PR MULBEN PRIDE 7188</b> +*18990782	5T Power Chip 4790 PR Lady 909 4200-587	EXAR Blue Chip 1877B 5T Miss Wix 8002							
		SAV Net Worth 4200 PR 587 205-537							
<b>CED</b>	<b>BW</b>	<b>WW</b>	<b>YW</b>	<b>MILK</b>	<b>CW</b>	<b>MARB</b>	<b>REA</b>	<b>\$W</b>	<b>\$B</b>
9	0.9	54	91	25	26	0.34	0.64	60	108

- A February heifer by the featured Dieckmann herd sire, Ox Bow Motive 8276, back to a daughter of BC Balance 516-7 and the featured Mulben Pride family on the bottom side.
- Dam of this female was the \$18,000 selection of Dieckmann Cattle through the 2018 fall Conley sale and was one of the top heifer calves of that entire event.
- Dam is a maternal sister to the past American Royal ROV Grand Champion, the 2016 Tulsa State Res. Supreme Champion, and the Res. Grand Champion Owned Female of the 2018 Missouri Junior Angus Preview Show.



**OX BOW MOTIVE8276**  
Sire of Lot 13.

**13** **DIECKMANN MULBEN PRIDE 0811**  
ANGUS calved **2/25/20** cow \***19783270** tattoo **0811**

<b>OX BOW MOTIVE 8276</b> 19316309	Soo Line Motive 9016 Ox Bow Blackbird 592	HF Kodiak 5R TLA Beauty 5R							
<b>CONLEY MULBEN PRIDE 811</b> +*19181595	BC Balance 516-7 PR Lady 909 4200-587	GDAR Game Day 449 Ox Bow Blackbird 0163							
		BC Matrix 4132 BC 112 JR E Belle 7022 516							
		SAV Net Worth 4200 PR 587 205-537							
<b>CED</b>	<b>BW</b>	<b>WW</b>	<b>YW</b>	<b>MILK</b>	<b>CW</b>	<b>MARB</b>	<b>REA</b>	<b>\$W</b>	<b>\$B</b>
5	2.3	58	99	21	37	0.16	0.7	57	110



LOT 13 I

**DIECKMANN MULBEN PRIDE 0811**







**14**  
ANGUS

**CHAPMAN LADY 4128**

calved **10/4/14** cow **18350034** tattoo **4128**

**PEAK DOT PROOF 1066X**  
18259173  
SAV Pioneer 7301  
Barbara of Peak Dot 314T

**LADY OF PEAK DOT 574Z**  
17819596  
SAV Iron Mountain 8066  
Lady of Peak Dot 263M

SAV Final Answer 0035  
SAV Blackbird 5297  
SAV 004 Predominant 4438  
Barbara of Peak Dot 519K  
TC Gridiron 258  
SAV Madame Pride 3249  
HF Young Gun 139J  
Cedar Creek Princess 340X

CED	BW	WW	YW	MILK	CW	MARB	REA	\$W	\$B
7	0.2	47	80	14	25	0.2	0.39	37	97

- This featured donor is an outstanding, young female in the prime of her life by Peak Dot Proof 1066X back to the Lad of Peak Dot family on the bottom side.
- This powerful, young female went on to produce a featured ST Genetics AI sire, Conley Prowess, and one of the most talked about bulls at the National Western Stock Show in 2019. Her son has tremendous front end extension, tremendous shoulder design with ultra-sleek presence, and a beautiful hip and hind leg with a solid middle structure to make outstanding show heifer prospects.
- This cow has been a tremendous producer and offers unlimited genetic potential.
- Bred to calve February 2, 2021 to OXBOW MOTIVE 8276. Examined Safe.



**CONLEY PROWESS**  
The ST Genetics AI sire whose dam sells as Lot 14.



**OXBOW MOTIVE 8276**  
Service sire for Lot 14 & 28A.



LOT 14 | **CHAPMAN LADY 4128**



LOT 14A | **DIECKMANN LADY 0708**

**14A**  
ANGUS calved **5/23/20** cow +\***19794401** tattoo **0708**

**14B**  
ANGUS calved **5/17/20** cow +\***19794403** tattoo **0739**

**14C**  
ANGUS calved **5/15/20** cow +\***19794400** tattoo **0621**



**CHAPMAN LADY 4128**  
Dam of Lots 14A-14D who sells as Lot 14.



**CONLEY PROWESS**  
Full brother to Lots 14A-14D

<b>CONLEY EXPRESS 7211</b> +*18941522	Sma Watchout 482 DPL Sandy 3040	Silveiras Watchout 0514 2K Beauty 961							
<b>CHAPMAN LADY 4128</b> 18350034	Peak Dot Proof 1066X Lady of Peak Dot 574Z	Silveiras Style 9303 KNC Cabin Creek Sandy 804 SAV Pioneer 7301 Barbara of Peak Dot 314T SAV Iron Mountain 8066 Lady of Peak Dot 263M							
<b>CED</b>	<b>BW</b>	<b>WW</b>	<b>YW</b>	<b>MILK</b>	<b>CW</b>	<b>MARB</b>	<b>REA</b>	<b>\$W</b>	<b>\$B</b>
2	1	55	82	18	26	0.37	0.14	54	97

- These special sale highlights are full sisters to the ST Genetics AI sire, Conley Prowess. They are direct daughters of the featured \$400,000 Conley Express 7211 back to the foundation Lady donor female in the Dieckmann Cattle program, Chapman Lady 4128, who stems back to the featured Lady of Peak Dot family on the bottom side.
- These outstanding heifer calves offer unlimited genetic potential.



**Bid Live Online** CCLive  
**"Gavel's Down, The Best in Online Marketing"**  
 (516) 366-0734 CCLive.schedule@cclive





LOT 14B |  
**DIECKMANN LADY 0739**



LOT 14C |  
**DIECKMANN LADY 0621**



# DIECKMANN LADY FAMILY



LOT 14D | **DIECKMANN LADY 0601**

**14D** **DIECKMANN LADY 0601**  
 ANGUS calved **4/28/20** cow **+\*19794399** tattoo **0601**

**CONLEY EXPRESS 7211**  
 +\*18941522 Sma Watchout 482  
 DPL Sandy 3040 Silveiras Watchout 0514  
 2K Beauty 961

**CHAPMAN LADY 4128**  
 18350034 Peak Dot Proof 1066X  
 Lady of Peak Dot 574Z Silveiras Style 9303  
 KNC Cabin Creek Sandy 804

SAV Pioneer 7301  
 Barbara of Peak Dot 314T  
 SAV Iron Mountain 8066  
 Lady of Peak Dot 263M

CED	BW	WW	YW	MILK	CW	MARB	REA	\$W	\$B
-1	2.7	63	105	16	37	0.55	0.32	49	123



**CHAPMAN LADY 4128**  
 Dam of Lots 14A-14D who sells as Lot 14.



**CONLEY PROWESS**  
 Full brother to Lots 14A-14D

- These special sale highlights are full sisters to the ST Genetics AI sire, Conley Prowess. They are direct daughters of the featured \$400,000 Conley Express 7211 back to the foundation Lady donor female in the Dieckmann Cattle program, Chapman Lady 4128, who stems back to the featured Lady of Peak Dot family on the bottom side.
- These outstanding heifer calves offer unlimited genetic potential.

## SCHEDULE OF EVENTS

### FRIDAY, OCTOBER 23RD

ALL DAY. - CATTLE AVAILABLE FOR VIEWING  
 (Lights available for night viewing)

### SATURDAY, OCTOBER 24TH

9 A.M. - CATTLE AVAILABLE FOR VIEWING  
 5:30 P.M. - DINNER SERVED

**6:30 P.M. DIECKMANN CATTLE PRODUCTION SALE**  
 7:30-10:30 P.M. - MUSIC & SOCIAL





LOT 15 | **DIECKMANN CHEYENNE 0732**



**CONLEY CHEYENNE 0268**  
Dam is a full sister to the granddam of Lot 15.



**CRAFT CHEYENNE 1397-581**  
The \$20,000 maternal sister to the third-generation dam of Lot 15.

**15**  
ANGUS

**DIECKMANN CHEYENNE 0732**

calved **1/16/20** cow **\*19783271** tattoo **732**

**COLBURN INSPIRE 6116**

+\*18522281

EXAR Classen 1422B

Dameron First Class  
EXAR Princess 2006

Silveiras Saras Dream 1339

Silveiras Style 9303  
EXG Saras Dream S609 R3

Plum Creek Refresh 561A

Gambles Hot Rod  
SH Miss Annie Lu 6087

**UDE CHEYENNE 32E**

18869057

Conley Cheyenne 5028

Penners-CC Double Black 2257  
Craft Cheyenne 1397-028

CED	BW	WW	YW	MILK	CW	MARB	REA	\$W	\$B
-3	4.9	53	76	22	28	0.88	0.76	49	129

- A direct daughter of Colburn Inspire 6116 back to the featured Cheyenne family on the bottom side.
- Craft Cheyenne 1397-028, the third-generation dam, is a maternal sister to the \$20,000 Craft Cheyenne 1397-581 who was the 2007 Res. Grand Champion Cow Calf Pair at the National Junior Angus Show, the 2007 Supreme Champion Cow Calf at the Indiana State Preview Show and Res. Division Champion at the National Junior Angus Show.

VIDEOS WILL BE POSTED ON OUR WEBSITE  
**WWW.DIECKMANNCATTLE.COM**



- A direct daughter of the Pathfinder sire and GENEX Beef AI sire SAV Bismarck 5682, back by the \$105,000 selling granddam for Reimann Ranch.
- Mother is an up-and-coming donor for Dieckmann Cattle, she was successfully campaigned by the Rea family, IA.



**NMR MRS MATERNALLY 777 ET**  
Dam of Lot 16.

**LOT 16 |  
DIECKMANN LUCKY 777H**

**16** calved **4/3/20** cow **COMMERCIAL** tattoo **777H**  
**COMM**

**DIECKMANN LUCKY 777H**

**SAV BRILLIANCE 8077**  
16107774

SAV Bismarck 5682  
SAV Blackcap May 5270

**NMR MRS MATERNALLY 777 ET**  
498239

NMR Maternal Made  
777

GAR Grid Maker  
SAV Abigale 0451

SAV 8180 Traveler 004  
SAV May 2420

BPF Mercedes Benz 131U  
NMR 0-04X

Unregistered  
Unregistered

**17** calved **4/25/20** cow **512593** tattoo **821H**  
**MAINTAINER**

**DIECKMANN WITCH 821H**

**GETCHA SOME ET**  
389849

**8/101**  
469914

GOET I Believe  
ASR Dreams Come True 301Z  
The Witch Doctor  
5/501

Believe In Me  
BPF MileY 80T

Monopoly  
JSUL Dreams ComeTrue846U

Power Plant  
LLND Ashley

Unregistered  
Unregistered



- Dam is a no miss cow, selling a maternal sib by, Believe in Me, for \$28,000. Was successfully shown with a lot of success, we look for this half siter to follow her footsteps.



\$28,000 maternal sib to Lot 17.



**GETCHA SOME ET**  
Sire of Lot 17.

**LOT 17 |  
DIECKMANN WITCH 821H**





LOT 19 | **DIECKMANN REI WHISKEY 401H**



LOT 18 | **DIECKMANN REI WHISKEY 926H**



**NMR MRS WHISKEY 5401 ET**  
The dam of Lots 18 & 19.

**18** **DIECKMANN REI WHISKEY 926H**

calved **2/26/20** cow **PENDING** tattoo **926H**  
**MAINTAINER**

**GETCHA SOME ET**

389849

GOET I Believe

ASR Dreams Come True 301Z

Irish Whiskey

**NMR MRS WHISKEY 5401 ET**

512309

Ferg 665

Believe In Me  
BPF Milely 80T

Monopoly  
JSUL Dreams Come True 846U

BK Ice Pick 472J  
NTC 615 Ever Ready

Neel Swoosh 64H  
Ferg 6120

- Dam was past high seller at Reimann Ranches Fall Sale going for \$20,000.
- This beautiful patterned, deep-bodied, eye appealing Maine Anjou show heifer reads with tremendous potential across the board.

**19** **DIECKMANN REI WHISKEY 401H**

calved **1/2/20** cow **512311** tattoo **401H**  
**PB MAINE**

**BNWZ DATA BANK 1311C ET**

464046

BBBN X2 201X

BNWZ Calypso 28Y

Irish Whiskey

**NMR MRS WHISKEY 5401 ET**

512309

Ferg 665

GVC Statesman 4R ET  
Boss Beauty 84M

SLC Sooner 101M  
DLB Miss Whiskey 2T

BK Ice Pick 472J  
NTC 615 Ever Ready

Neel Swoosh 64H  
Ferg 6120

- Backed by the popular Griswold Cattle Sire, Databank, in his young career he is becoming a must use bull in Maine genetics.
- Dam was past high seller at Reimann Ranches Fall Sale going for \$20,000. Cow power on both sides of the pedigree.
- We look for this high Maine to be very successful. Beautifully colored with extra balance and power in an extremely sound package.

# DIECKMANN FANCY SHOW HEIFERS



LOT 20 | **DIECKMANN PAULINE 350H**

**20**

PB CHAR

## DIECKMANN PAULINE 350H

calved **4/20/20**

cow **EF1291126**

tattoo **350H**

RBM TR Rhinestone Z38  
**TR CAG CARBON COPY 7630E ET**  
 EM896198 M&M Ms Carbine 1567 PLD  
 TR Mr Wrangle Up 2502Z  
**LJR WRANGLIN PAULINE 29B PLD**  
 EF1238481 DR Lisa 1038

LT Bluegrass 4017 P  
 HC Rhinestone 5100  
 M&M Raptor 8122 PLD  
 MS Cooley JPot 1107N9 ET  
 WR Wrangler W601  
 TR Ms Wylie Fire 0761S ET  
 Sparrows Madrid 7M  
 DR Lisa 685

CED	BW	WW	YW	MILK	CW	MARB	REA
3.6	.1	33	57	10	17	.07	.47

- A daughter of the up and coming Charolais Bull, Carbon Copy.
- Dam is a no miss producer and is the cowman's type. This elegant daughter is sure to be competitive with her extra power.



LOT 21 | **DIECKMANN MACHO WHISKEY 583H**

**21**

MAINTAINER

## DIECKMANN MACHO WHISKEY 583H

calved **1/13/20**

cow **512321**

tattoo **583H**

BPF Mercedes Benz 131U  
**NMR MATERNAL MADE**  
 459900 NMR 0-04X  
 Irish Whiskey  
**RCC MACHO WHISKEY**  
 512319 Unregistered

Cowan's Ali 4M  
 DCC Mercedes 701P  
 Irish Whiskey  
 Uregistered  
 BK Ice Pick 472J  
 Unregistered  
 Unregistered  
 Unregistered

- A daughter of the record selling Embryos on Snow Bull, NMR Maternal Made and backed by a staple donor in the Dieckmann Cattle program
- This Maine heifer reads eye appeal with extra power and bone. We think this heifer will be a big-time donor.



LOT 22 | **DIECKMANN MATERNAL LEGEND 610H**

**22**

MAINTAINER

## DIECKMANN MATERNAL LEGEND 610H

calved **4/7/20**

cow **PENDING**

tattoo **610H**

NBH Polled Energizer 688E  
**COWAN'S ALI 4M**  
 307184 FJH Countess 115H  
 Maternal Legend  
**NMR MATERNAL LEGEND 5142**  
 C512312 Unregistered

JF War Chief  
 Dukes Marvella 88X  
 FJH Legacy 130E  
 ZTA Miss Black Lucy 110D  
 BPF Mercedes Benz 131U  
 NMR 0-04X  
 Unregistered  
 Unregistered

- Backed by the popular AI sire Cowan's Ali 4M, and \$20,000 dam owned with Reimann Ranch, SD.
- Bringing top end genetics on both sides of the pedigree this heifer is sure to be an outstanding producer.



**5/142**  
 Dam of Lot 22.





LOT 23 | **DIECKMANN LUCY 615H ET**

**23** **DIECKMANN LUCY 615H ET**  
 MAINETAINER calved **6/4/20** cow **512326** tattoo **615H**



**CONLEY LUCY 7988**  
 The dam of Lots 23 & 23A.

**23A** **DIECKMANN LUCY 517H ET**  
 MAINETAINER calved **1/29/20** cow **512329** tattoo **517H**

**BOE GARTH**  
 447000

Minn Hard Whiskey

DCC Hard Whiskey 138R  
 JSC Katie SS

BOE Miss Jolene

GVC Suh 01W  
 BOE Kelsey

OCC Rear End 751R

OCC Homer 650H  
 FCC Revolution Rose 995N

**CONLEY LUCY 7988**  
 AN18872471

Womack Miss Lucy 011

BC Lookout 7024  
 Womack Miss Lucy 6780



LOT 23A | **DIECKMANN LUCY 517H ET**

- Backed by the popular Griswold Cattle Sire, BOE Garth, with limited semen.
- Dam is a direct daughter of 5T Power Chip 4790, the 2016 Fort Worth Stock Show Res. Grand Champion, Res. Grand Champion Bull of the Canadian Royal Winter Fair and past Texas State Fair Champion, stems back to the featured Womack Miss Lucy 011 who has a progeny production record of BR 2@90, WR 2@104, %IMF 2@105, UREA 2@10.



**LOT 24 | DIECKMANN TIME TO SHINE 431H**



**CMFM TIME TO SHINE 99D**  
Dam of Lots 24-27.

**24** **DIECKMANN TIME TO SHINE 431H**  
 SIM calved **3/27/20** cow **3750364** tattoo **431H**  
**SOLUTION**

SMA Watchout 482 Silveiras Watchout 0514  
 2K Beauty 961  
**CONLEY EXPRESS 7211**  
 3179581 DPL Sandy 3040 Silveiras Style 9303  
 KNC Cabin Creek Sandy 804  
 HPF Quantum Leap 2952 HTP/SVF Duracell T52  
 RP/MP Right to Love 015U  
**CMFM TIME TO SHINE 99D**  
 3138089 Miss Time to Shine Y251 HTP SVF In Dew Time  
 JJ Black Obsession

CED	BW	WW	YW	MILK	CW	MARB	REA	API	TI
8.5	0.9	73	107	19	34	0.56	0.33	132	78

- This heifer calf is a direct daughter of one of the hottest bulls in the industry, Conley Express 7211, who was the 2018 Res. Grand Champion Bull at the Fort Worth Stock Show and son of the 2016 national Western Stock Show Grand Champion Bull, SMA Watchout 482 and backed by a daughter of Quantum Leap and featured CMFM Time to Shine 99D, the 2017 Simmental Breeders Sweepstakes Grand Champion Female, 2017 Res. Grand Champion Simmental Female at the North American, Division V Champion at the 2017 North American and a foundation donor female in the Dieckmann Cattle program.

**25** **DIECKMANN TIME TO SHINE 522H**  
 SIM calved **4/26/20** cow **3750365** tattoo **522H**  
**SOLUTION**

**25A** **DIECKMANN TIME TO SHINE 526H**  
 SIM calved **3/29/20** cow **3750366** tattoo **526H**  
**SOLUTION**

**25B** **DIECKMANN TIME TO SHINE 183H**  
 SIM calved **3/13/20** cow **3750367** tattoo **183H**  
**SOLUTION**

Gamble Hot Rod Famous 7001  
 Champion Hill Lady 703  
**SILVEIRAS STYLE 9303**  
 2573675 Silveiras Elba 2520 Twin Valley Precision E161  
 DAR Elba 55  
 HPF Quantum Leap 2952 HTP/SVF Duracell T52  
 RP/MP Right to Love 015U  
**CMFM TIME TO SHINE 99D**  
 3138089 Miss Time to Shine Y251 HTP SVF In Dew Time  
 JJ Black Obsession

CED	BW	WW	YW	MILK	CW	MARB	REA	API	TI
12.7	0.1	63	91	18	18	0.44	0.29	134	70

- These beautiful sisters are flush mates by Silveiras Style 9303 and back to the featured CMFM Time to Shine 99D, the 2017 Simmental Breeders Sweepstakes Grand Champion Female, 2017 Res. Grand Champion Simmental Female at the North American, Division V Champion at the 2017 North American and a foundation donor female in the Dieckmann Cattle program.





LOT 25 I  
**DIECKMANN TIME TO SHINE 522H**



LOT 25A I  
**DIECKMANN TIME TO SHINE 526H**



LOT 25B I  
**DIECKMANN TIME TO SHINE 183H**



**LOT 26 | DIECKMANN TIME TO SHINE 541H**

**26** **DIECKMANN TIME TO SHINE 541H**  
 SIM calved **4/25/20** cow **3754011** tattoo **541H**  
**SOLUTION**

**BC LOOKOUT 7024**

2431243

OCC Legend 616L

OCC Emblazon 854E  
 OCC Blackbird 632J

Gibbet Hill Mignonne E37

Papa Equator 2928  
 Gibbet Hill Mignonne TR 29

HPF Quantum Leap 2952

HTP/SVF Duracell T52  
 RP/MP Right to Love 015U

**CMFM TIME TO SHINE 99D**

3138089

Miss Time to Shine Y251

HTP SVF In Dew Time  
 JJ Black Obsession

CED	BW	WW	YW	MILK	CW	MARB	REA	API	TI
12.8	-0.1	64	89	18	26	0.36	0.56	126	69

- A daughter of the Pathfinder sire and 2012 ROV Sire of the Year, BC Lookout 7024, and back to the featured \$50,000 CMFM Time to Shine 99D, the 2017 Simmental Breeders Sweepstakes Grand Champion Female, 2017 Res. Grand Champion Simmental Female at the North American, Division V Champion at the 2017 North American and a foundation donor female in the Dieckmann Cattle program.

- A maternal sister to dam, CMFM Time to Shine 400C, was the Grand Champion Female of the American Royal Jr. Show, the Champion Simmental Female at the Tulsa State Fair Jr. Show and Supreme Champion.



**CMFM TIME TO SHINE 99D**  
 Dam of Lots 24-27.



**CMFM TIME TO SHINE 99D**  
 The 2017 Grand Champion Simmental female, Jr. Show NAILE & the dam of Lots 24-27.



**BC LOOKOUT 7024**  
 Sire of Lot 26.





LOT 27 | DIECKMANN TIME TO SHINE 821H



Maternal sister to Lots 24-27, Calf Champion '19 NAILE Simmental show. Sired by SC Pay the Price.

- A daughter of the ever popular Hartman Cattle sire, Profit, averaging an outstanding \$54,000 in 2018 HCC December Sale and back to the featured \$50,000 CMFM Time to Shine 99D, the 2017 Simmental Breeders Sweepstakes Grand Champion Female, 2017 Res. Grand Champion Simmental Female at the North American, Division V Champion at the 2017 North American and a foundation donor female in the Dieckmann Cattle program.
- A maternal sister to dam, CMFM Time to Shine 400C, was the Grand Champion Female of the American Royal Jr. Show, the Champion Simmental Female at the Tulsa State Fair Jr. Show and Supreme Champion.
- This outstanding purebred heifer offers unlimited genetic potential and has the ability to compete at every level successfully.

**27** **DIECKMANN TIME TO SHINE 821H**  
 calved **4/20/20** cow **3773356** tattoo **821H**

PB SIM

**PROFIT**

291162

WS Pilgrim H182U CNS Dream On L186  
 WS Marla 276M  
 WAGR Panarama 204Z MR HOC Broker  
 3C Melody M668 BZ  
 HPF Quantum Leap 2952 HTP/SVF Duracell T52  
 RP/MP Right to Love 015U  
 CMFM TIME TO SHINE 99D HTP SVF In Dew Time  
 3138089 Miss Time to Shine Y251 JJ Black Obsession

CED	BW	WW	YW	MILK	CW	MARB	REA	API	TI
8.7	3.1	74	106	24	22	0.12	0.62	119	73

LOT **C** **PROFIT**  
 calved **1/27/14** bull **2911662** tattoo **155B**  
 PB  
 SIMMENTAL CNS Dream On L186 Nichols Legacy G151  
 CNS Sheeza Dream K107W  
**WS PILGRIM H182U** Ellingson BlackPerfector  
 2485318 WS Marla 276M GW Miss Pasque 651F  
 MR HOC Broker SVF Steel Force S701  
 JM BF H25  
**WAGR PANARAMA 204Z** Hart Subzero G322  
 2647603 3C Melody M668 BZ 3C Crocus G374 BZ

CED	BW	WW	YW	MILK	CW	MARB	REA	API	TI
4	5.9	74	104	24	15	.01	0.56	97	64



• FOR REFERENCE ONLY



# DIECKMANN QUEEN FAMILY



LOT 28 | **BCR QUEEN 515**

- This special sale attraction is an elite daughter of the Triple Crown Winner and \$306,000 valued Dameron First Class back to FCF SCC PVF Proven Queen 615, who was the Res. Grand Champion of the Illinois State Fair and the Nation Junior Angus Show Division Res. Champion, and Illinois Preview Show Grand Champion Female.
- This female is a maternal sister to FCF Proven Queen 419, the 2015 North American ROV Angus Show Grand Champion Female and the 2016 National Western Stock Show Junior Show and ROV Grand Champion Female.
- Dam of this female is also the granddam of the 2017 North American Res. Grand Champion, Top Line FCF Proven Queen 161.
- Bred to calve February 1, 2021 to CONLEY EXPRESS 7211. Examined Safe.



**TOP LINE FCF PROVEN QUEEN 161**  
The 2017 Res. Grand Champion at the North American produced from a maternal sister to Lot 28.

**28**  
ANGUS

## BCR QUEEN 515

calved **5/1/15** cow **+\*19247715** tattoo **515**

### DAMERON FIRST CLASS

\*16175085

EXG RS First Rate S903 R3 Exar Lutton 1831  
Rafter S Blackcap P909

Dameron Northern Miss 3114 Dameron PVF Raptor 702  
Dameron Miss 550

PVF New Horizon 001 B/R New Design 323  
Hyline Ellen 410

### FCF SCC PVF PROVEN QUEEN 615

+\*15389097

Dameron PVF Proven Queen 010 Leachman Explorer  
PVF Proven Queen 602

CED	BW	WW	YW	MILK	CW	MARB	REA	\$W	\$B
I-2	I+4.8	I+58	I+93	I+23	I+30	I+1.0	I+.62	45	107

**28A**  
ANGUS

## DIECKMANN PROVEN QUEEN 9270

calved **12/15/18** cow **+\*19544675** tattoo **9270**

### S&R ROUNDTABLE J328

+\*17573679

Plainview Lutton E102 Exar Lutton 1831  
Plainview Pride C123

PVF Proven Queen 786 BR Midland  
PVF Proven Queen 419

Dameron First Class EXG RS First Rate S903 R3  
Dameron Northern Miss 3114

### BCR QUEEN 515

+\*19247715

FCF SCC PVF Proven Queen 615 PVF New Horizon 001  
Dameron PVF Proven Queen 010



LOT 28A | **DIECKMANN PROVEN QUEEN 9270**

- A daughter of S&R Roundtable J328 back to the featured Proven Queen family.
- This powerful female's dam is a maternal sister to the 2016 National Western Stock Show Junior and Open Grand Champion and the 2015 North American ROV Angus Show Grand Champion Female, FCF Proven Queen 419.
- Bred to calve January 26, 2021 to OXBOW MOTIVE 8276. Examined Safe.



**FCF PROVEN QUEEN 419**  
The 2016 NWSS Grand Champion, 2015 NAILE Grand Champion & maternal sister of Lot 28.





LOT 29 | **BNWZ/SWNY ROSEBUD 9186**

**29**  
ANGUS

**BNWZ/SWNY ROSEBUD 9186**

calved **1/22/19** cow **19504956** tattoo **9186**

**C&C MCKINLEY 3000 EXAR**  
+\*17610661  
Dameron First Class  
RAC Winnie 7456

**SHER/LSC ROSEBUD 403B**  
17939300  
Champion Hill Fullback 380  
LSC Sasha 133

EXG RS First Rate S903 R3  
Dameron Northern Miss 3114

BR Midland  
WK Winnie 7305

Rito 9FB3 of 5H11 Fullback  
Champion Hill Stone Shadoc

Leachman Saugahatchee 3000C  
BWL Rosebud 4136

CED	BW	WW	YW	MILK	CW	MARB	REA	\$W	\$B
I+2	I+3.3	I+42	I+75	I+20	I+23	I+.13	I+.51	29	99

- A daughter of C&C McKinley 3000 EXAR back to SHER/LSC Rosebud 403B, who is the 2015 American Royal Grand Champion and went on to produce the \$70,000 EXAR Zulu 403, who sold through the 2017 Express Ranches Spring Bull Sale. Other maternal sisters to this female include the \$24,000 feature through the 2018 Bases Loaded Sale and the \$30,000 feature through the 2018 Nowatzke Cattle Company Fall Production Sale.
- Bred to calve January 2, 2021 to 5T POWER CHIP 4790. Examined Safe.



**SHER/LSC ROSEBUD 403B**  
2015 American Royal Grand Champion  
and dam of Lot 29.

# DIECKMANN AMELIA/LADY JAYE FAMILY



LOT 30 | **DIECKMANN AMELIA 9155**



**J&J QUEEN 414**  
Third-generation dam of Lot 30.

- A direct daughter of the featured \$400,000 Fort Worth Stock Show Champion, Conley Express 7211, back to the featured J&J Queen 414 family on the bottom side.
- Third-generation dam was the featured top-selling Lot 1 cow of the 2010 J&J Cattle Company Annual Production Sale and brought \$22,750 to Price Farms of Elk City, Oklahoma and is proclaimed as one of the greatest daughters of the \$75,000 Northern Improvement ever born.
- Grandmother was the Champion Angus Female of the 2015 OJCA Summer Preview Show and a four-time Res. Division Champion and ten-time class winner.
- A maternal sister to the dam was the spring champion female of the 2015 OYE and a 7-time Grand Champion Overall, a 5-time Res. Grand Champion Overall, a 17-time Breed Champion, a 9-time Res. Breed Champion, an 8-time Division Winner, and a 34-time Class Winner, PV First Class Dolly 8351.
- Dam is a maternal sister to the Res. National Champion Percentage Simmental Female, WLTRR Lydia, WLTR Renegade, and the 2010 National Western Res. Grand Champion Simmental Bull.
- Bred to calve January 2, 2021 to MERCEDES BENZ. Examined Safe.

**30**  
ANGUS

## DIECKMANN AMELIA 9155

calved **2/21/19** cow **+\*19553355** tattoo **9155**

### CONLEY EXPRESS 7211

+\*18941522

Sma Watchout 482

DPL Sandy 3040

Silveiras Watchout 0514  
2K Beauty 961

Silveiras Style 9303  
KNC Cabin Creek Sandy 804

PVF Insight 0129

### PC/DCC INSIGHTS AMELIA E351

+\*19002939

PF Miss First Class of 414

SAV Brilliance 8077  
PVF Missie 790

Dameron First Class  
J&J Queen 414

**31**  
ANGUS

## DIECKMANN LADY JAYE 9614

calved **5/19/19** cow **\*19538737** tattoo **9614**

### MCCABE BISMARCK 7016

\*18444994

SAV Bismarck 5682

Womack Classic Lucy 412

Bruin Uproar 0070

### CONLEY LADY JAYE 6145

18608532

VLK Z207

GAR Grid Maker  
SAV Abigale 0451

Dameron First Class  
Womack PLC Lucy 67S

Sitz Upward 307R  
Falcon Blackbird 6071

BC Eagle Eye 110-7  
BAAR USA Lady Jaye 6025

CED	BW	WW	YW	MILK	CW	MARB	REA	\$W	\$B
4	1.8	64	108	23	40	0.39	0.65	67	120



LOT 31 | **DIECKMANN LADY JAYE 9614**

- A daughter of McCabe Bismarck 7016 back to a daughter of Bruin Uproar 0070 and the featured Lady Jaye family.
- Third-generation dam is a full sister to the Select Sires AI sire, CRA Bextor 872 5205 608, a featured member of the Select Sires AI stud.
- This female reads with a well-balanced set of numbers across the board and offers unlimited genetic potential.
- Bred to calve April 15, 2021 to 5T POWER CHIP 4079. Examined Safe.





**32**  
ANGUS

**DIECKMANN VALEE 904**

calved **1/1/19** cow **+\*19448722** tattoo **904**

GAR Grid Maker GDAR Traveler 044  
 GAR Precision 2536  
**SAV BISMARCK 5682**  
 #+15109865 SAV Abigale 0451  
 Schoenes Fix It 826  
 SAV Abigale 6062  
 BR Midland Twin Valley Precision E161  
 BR Royal Lass 7036-19  
**SANKEYS VALEE 526**  
 15185803 CS Valees Gal 105  
 BC Sasquatch 20-20 4139  
 EXAR Valee 9674

CED	BW	WW	YW	MILK	CW	MARB	REA	\$W	\$B
11	-0.1	48	74	15	20	0.01	0.54	48	86

- A daughter of the Pathfinder sire, SAV Bismarck 5682, back to the \$202,000 BR Midland and a foundation Valee female in the Sankeys 6N Ranch program, CS Valees Gal 105, who is a many-time champion.
- Bred to calve January 2, 2021 to 5T POWER CHIP 4079. Examined Safe.



**LOT 33 | DIECKMANN ARKDALE PRIDE 9606**

**33**  
ANGUS

**DIECKMANN ARKDALE PRIDE 9606**

calved **6/4/19** cow **\*19538736** tattoo **9606**

**MCCABE BISMARCK 7016**

\*18444994 SAV Bismarck 5682  
 Womack Classic Lucy 412  
 Dameron First Class  
 Womack PLC Lucy 67S  
 SILVEIRAS CONVERSION 8064  
 LAFINS FARRAH 0252  
**SANKEYS ARKDALEPRIDE 606**  
 +\*18505552 Limestone Arkdalepride X209  
 Limestone Emulation U605  
 Limestone ArkdalePride U1847

CED	BW	WW	YW	MILK	CW	MARB	REA	\$W	\$B
11	1.3	54	94	14	36	0.41	0.86	46	132

- A direct daughter of McCabe Bismarck 7016 back to the 2017 Fort Worth Stock Show Heifer Calf Champion, Sankeys Arkdale Pride 606.
- Grandmother is the \$13,500 feature through the 2016 Sankey's 6N Ranch Sale and a maternal sister to the \$40,000 Sankeys Arkdale Pride 3004, who is the top-selling female of that same event.
- Bred to calve January 2, 2021 to STEVENSON TURNING POINT. Examined Safe.



**SANKEY'S ARKDALE-PRIDE 606**

The 2017 Ft. Worth Stock Show Heifer Calf Champion and mother to Lot 33.





**LOT 34 | HORSTMAN LAH LADY 920G**

**34** **HORSTMAN LAH LADY 920G**  
 ANGUS calved **2/20/19** cow **19481138** tattoo **920G**

**5T POWER CHIP 4790**  
 \*17956297 EXAR Blue Chip 1877B Dameron First Class Greens Princess 1012  
 5T Miss Wix 8002 BC Matrix 4132 Circle Oak Miss Wix 4014  
 Northern Improvement 4480 GF TC Stockman 365 Blackcap of RR 5367  
**GAMBLES LADY 4010**  
 16690946 Gambles Lady 3016 Connealy Forefront Champion Hill Lady 703

CED	BW	WW	YW	MILK	CW	MARB	REA	\$W	\$B
I+9	I+.7	I+.56	I+.90	I+.21	I+.29	I+.51	I+.45	55	119

- A daughter of the past Fort Worth Stock Show Res. Grand Champion, the Canadian Royal Winter Fair Champion, and the Texas State Fair Champion, 5T Power Chip 4790, back to a daughter of the \$75,000 Northern Improvement 4480 GF and the \$50,000 Gambles Lady 3016.
- Grandmother is a maternal sister to Gambles Hot Rod, the North American and National Western Champion Bull.
- Bred to calve January 2, 2021 to STEVENSON TURNING POINT. Examined Safe.



**FLATROCK PATRICIA 192KN**  
 The \$30,000 granddam of Lot 35.



**LOT 35 | RAF PATRICIA 119 KN**

**35** **RAF PATRICIA 119 KN**  
 ANGUS calved **2/5/19** cow **\*19449260** tattoo **119**

**STEVENSON TURNING POINT**  
 +\*18434747 Plattermere Weigh Up K360 Sitz Upward 307R Barbara of Plattermere 337  
 Stevenson Pride I167x SAV Bismarck 5682 FSHK Pride 180  
 5T Power Chip 4790 EXAR Blue Chip 1877B 5T Miss Wix 8002  
**CONLEY PATRICIA 7111**  
 +\*18849924 Flatrock Patricia 192 KN BC Eagle Eye 110-7 Patricia 92 KN

CED	BW	WW	YW	MILK	CW	MARB	REA	\$W	\$B
7	0.8	58	82	15	31	0.34	0.71	55	113

- A daughter of the \$70,000 Stevenson Turning Point and GENEX Beef AI sire back to the \$30,000 featured top-selling Lot 1 female of a past Indiana Fall Classic, Flat Rock Patricia 192 KN. A maternal sister to the dam was the \$11,000 feature through the 2017 Conley Cattle sale and through that same event another maternal sister was the \$10,000 feature.
- Bred to calve January 2, 2021 to 5T POWER CHIP 4790. Examined Safe.





**LOT 36 | NMR WHISKEY KELLI 480D ET**

**36** **NMR WHISKEY KELLI 480D ET**  
 calved **5/5/16** cow **PENDING** tattoo **480D**

**CHI/**  
**MAINTEINER**

**IRISH WHISKEY**

262401

BK Ice Pick 472J

NTC 615 Ever Ready

CKE Primetime 74F  
 Pannell Miss 4072

Cunia 10  
 Unregistered

ASHW Who Da Man

Who Made Who  
 ASHW CA X MA X SM

**JSUL DREAMS COME TRUE 846U**

339606

JSUL Dream Maker HS46

BHCS Heat Seeker 23  
 JSUL MA X AN 6651

- “Kelli” has produced well over \$1 million in progeny sales to date and counting. She is arguably the current most decorated female in the composite business, and these will be her only embryos to sell this year! Kelli’s track record is lined with many champions and high sellers.
- Reimann’s had two Irish Whiskey heifer calves that averaged \$28,000 each for half interest. In the 2016 First Class Female Sale, an Irish Whiskey daughter sold for \$78,000, while a Monopoly bred heifer sold for \$43,000.
- Full sibs in blood have been some of the most winningest cattle in the country in the past years.
- Bred to calve March 27,2021 to DADDY’S MONEY. Examined Safe.



**LDSC MISS WHISKEY DREAMS 30Z “2/75”**  
 Maternal sister to Lot 36, 2014 NWSS Grand  
 Champion MaineTainer Heifer.



**KELLI**  
 The \$1 million dollar producing dam to Lot 36.





Ludray Haines

JUNIOR HEIFER SHOW



JUNIOR HEIFER SHOW



Megan B @ Linda's



- GRAND CHAMPION FEALTY WORLD AMERICAN NATIONAL JUNIOR HEIFER SHOW 2021
- GRAND CHAMPION FEALTY WORLD AMERICAN NATIONAL JUNIOR HEIFER SHOW 2021
- GRAND CHAMPION FEALTY WORLD AMERICAN NATIONAL JUNIOR HEIFER SHOW 2021
- GRAND CHAMPION FEALTY WORLD AMERICAN NATIONAL JUNIOR HEIFER SHOW 2021
- GRAND CHAMPION FEALTY WORLD AMERICAN NATIONAL JUNIOR HEIFER SHOW 2021





success with a brand.



LOT 1 |  
DIECKMANN FRONTIER GAL 0735





PO BOX 660  
SMITHVILLE, MO 64089



proudly designed by

# D

**DIECKMANN CATTLE**  
annual production sale

**OCTOBER 24, 2020**

6:30 P.M. EDT • GREENSBURG, INDIANA