



# Scanner QuickView

## **PFU Imaging Solutions Europe Limited**

Hayes Park Central  
Hayes End Road  
Hayes Middlesex UB4 8FE  
England  
Tel: (+44-(0)20) 8573 4444  
Fax: (+44-(0)20) 8573 2643

## **PFU Imaging Solutions S.p.A.**

Via Nazario Sauro, 38  
20099 Sesto San Giovanni (MI)  
Italy  
Tel: (+39) 0226294.1  
Fax: (+39) 0226294.201

<http://emea.fujitsu.com/scanners>

## **PFU Imaging Solutions GmbH**

Frankfurter Ring 211  
80807 Munich  
Germany  
Tel: (+49-(0)89) 32378-0  
Fax: (+49-(0)89) 32378-100

**ScanSnap S1100**

**ScanSnap S1300**

**ScanSnap S1500**

**ScanSnap S1500M**

**ScanSnap N1800**

**fi-5015C**

**fi-6110**

**fi-6130**

**fi-6230**

**fi-6140**

**fi-6240**

**fi-5530C2**

**fi-6670 / fi-6670A**

**fi-6750S**

**fi-6770 / fi-6770A**

**fi-6800**

**fi-5950**

**fi-60F**

**fi-5000N**

**fi-6010N**



## INTRODUCTION

PFU Imaging Solutions Europe Ltd (PFU) offers the most comprehensive range of document scanners available on the market today. Manufactured to the highest quality standards, Fujitsu scanners have an excellent reputation for reliability.

Whether your application involves document management, archiving, workflow or forms processing, Fujitsu most likely has the optimum scanner for the capture of your documents and data.

### FUJITSU SCANNERS CAN OFFER YOU:

- The ability to scan paper sizes from business card to A3 (extra long scanning possible up to 3m in length)
- Scan speeds from 8 to 270 images per minute
- Automatic document feeders as standard
- Simplex / duplex scanning
- Colour scanning capability as well as in black / white or grayscale
- Image enhancement for poor quality/mixed colour documents
- Complementary technologies across a broad range
- SCSI & USB models
- Host of software bundling

### ABOUT PFU IMAGING SOLUTIONS EUROPE LIMITED

Operating in Europe / Middle East / Africa, PFU Imaging Solutions Europe Limited is a market-leading provider of document image scanners for professional desktop, workgroup and high volume production environments; biometric authentication sensors and dot-matrix printers. Established in the United Kingdom in 1981, PFU Imaging Solutions Europe Limited, a subsidiary of PFU Limited (Japan), has its head office in the UK with subsidiaries in Germany and Italy. For more information, please see: [www.fujitsu.com/emea/products](http://www.fujitsu.com/emea/products)

### ABOUT PFU LIMITED

PFU Limited, a subsidiary of Fujitsu Limited, is a \$1 billion global enterprise that designs, develops, manufactures, sells and maintains computer hardware, peripheral products, enterprise software and systems. PFU Limited has been engaged in document imaging scanner business for over 20 years. For more information, please visit [www.pfu.fujitsu.com/](http://www.pfu.fujitsu.com/)



## CONTENTS

### DOCUMENT SCANNERS

ScanSnap S1100	4-5
ScanSnap S1300	6-7
ScanSnap S1500 and S1500M	8-9
ScanSnap N1800	10-11
fi-5015C	12
fi-6110	13
fi-6130 and fi-6230	14-15
fi-6140 and fi-6240	16-17
fi-5530C2	18
fi-6750S	19
fi-6670 / fi-6670A and fi-6770 / fi-6770A	20-21
fi-6800	22-23
fi-5950	24-25

### SMALL FORMAT SCANNER

fi-60F	26
--------	----

### NETWORK SCANNING

fi-5000N	27
fi-6010N	28-29

### SOFTWARE

Rack2-Filer V5.0	30
ScandAll Pro	31
Soft IPC V2.5	32
VRS Professional	33

### ENHANCEMENT

Assurance Programme	34-37
Cleaning & Consumable Kits	38-39
ISV Partner Programme	40-41
Imaging Channel Program	42-43
Specifications	44-46

# ScanSnap S1100

For further information visit  
<http://www.ScanSnapIT.com>



The one touch ScanSnap S1100 from Fujitsu is a fully portable document scanner offering total flexibility for scanning at the office, at home or on the move. Compatible for both the PC and Mac the S1100 digitises your documents and then allows for seamless transmission to a folder, email, printer, cloud services such as Google docs, Salesforce CRM, MobileMe or Evernote, SharePoint, Microsoft applications such as Word, Excel or PowerPoint, Adobe PDF, JPG and in the case of business cards to a database package.



1 Sheet



Simplex  
8 ppm



600 dpi

## ScanSnap S1100 Case (Optional)

A convenient carrying case specially designed for the S1100 is available.



**ScanSnap S1100 Deluxe** is also available which includes Rack2File organizer software (see page 8 for details)

Powered via a USB port the S1100 is one of the smallest scanners in the world offering the ability to scan A4 documents. Scan speeds of 8 pages per minute are achievable at resolutions of 300 dpi and selectable straight or u-turn paper paths can be chosen depending on the document being scanned or space constraints. In addition to standard A4 paper the scanner can comfortably cope with plastic id cards as well as A3 documents through the use of an optional carrier sheet.



A continuous document feeding function allows for the smooth scanning of multiple documents or the reverse of a document. For further operator enhancement the S1100 has automated functions such as automatic deskew/ orientation and colour detection all designed to scan your documents quickly and precisely.

## ScanSnap S1300

For further information visit  
<http://www.ScanSnapIT.com>



The portable ScanSnap S1300 scanner provides users with a cross platform solution that offers productivity, efficiency and intelligence in a compact, high performance form factor. Digitise your documents easily and then effectively organize anywhere and at anytime.

The small and powerful S1300 for PC and Mac users is a robust scanner capable of speedy double sided scanning of a range of everyday colour or black and white documentation. The 10 page automatic document feeder can accommodate mixed batches of documents ranging in thickness from 64 to 107 g/m<sup>2</sup> and in size from business card to A4.

Whether for use at home, in the office or on the move the S1300 will process documents with a single touch of a button at 8 pages per minute (16 images per minute) when mains operated or 4 pages per minute (8 images per minute) when powered directly from laptop or PC (via USB).



ScanSnap Organizer Screenshot



10 Sheets

The S1300 has a host of intelligent features helping to minimize operator involvement before, during and after the scanning process. No need for timely preparation, interference or intervention on screen as the scanner can automatically recognise the size of each document and crop accordingly, detect and correct for skew, automatically detect colour, auto correct orientation of images (text based or not) regardless of feed direction and also remove any blank pages.



Simplex  
8 ppm



Duplex  
16 ipm

The S1300 ScanSnap comes bundled with ScanSnap Organizer a convenient way to view your scanned data through the use of thumbnails and then store online in simple to use filing cabinets for later retrieval. If necessary this data can automatically be converted into searchable pdf files.



50 to  
600 dpi

Also included with the scanner is ABBYY FineReader for ScanSnap, which allows you to scan directly to Word, Excel or PowerPoint. Bundled business card scanning software enables users to export scanned data into Excel, Outlook or other content management tools. All scanning action is controlled through ScanSnap Manager which incorporates an intuitive QuickMenu function allowing users to scan directly to applications such as the ones above or to email, to print, to a folder or Microsoft SharePoint.

The S1300 is compatible with Windows 2000, XP, Vista and 7 and Mac OS X v 10.4, 10.5 and 10.6. It is available in a standard version plus as a Deluxe offering, bundled with Rack2File organizer software (see page 8 for details).

## ScanSnap S1500



For further information visit  
<http://www.ScanSnapIT.com>



ScanSnap S1500 is a compact desktop USB scanner enabling on demand scanning at the press of a button. Convert your documents into searchable PDF files utilising the bundled copy of Adobe® Acrobat® 9.0 Standard or through the additionally bundled ABBYY® Fine Reader for ScanSnap which can create Word, Excel and PowerPoint 2003 documents that are instantly editable.

ScanSnap S1500 can scan up to 20 pages per minute single sided or 40 images per minute double sided and can cope with mixed documents in terms of thickness from business card up to A3\* size through the 50 page ADF. Scanned data will be automatically deskewed, cropped, rotated and have blank pages removed as well as automatic resolution and intelligent auto colour.

Utilising the included ScanSnap Organizer allows the user to view scanned data quickly and easily without having to open the file, having the ability to zoom in, scroll through and perform keyword searches.

ScanSnap S1500 also comes with CardMinder software enabling speedy scanning of business cards and extracting the data to a database application. Additionally the S1500 features a QuickMenu utility, which launches after scanning offering the user the option to scan to folder, email, printer or application.

Optimised scanning and retrieval is enhanced through intelligent functionality such as automatic keyword sort, thumbnail viewer and intelligent cropping/indexing.



50 Sheets



Simplex  
20 ppm



Duplex  
40 ipm



600 dpi

### Rack2-Filer

ScanSnap S1500 is also available in a deluxe version with Rack2-Filer V5.0\*\*, an easy to use personal document management companion that allows you to instantly categorise all newly created scanned data and existing created data such as text documents, spreadsheets and presentations into virtual ring binders and files. Retrieve at a later date by using the in built OCR engine for sharing, exporting to a different format, emailing or printing. Rack2-Filer V5.0 is also available on it's own (see also page 30).

## ScanSnap S1500M

For further information visit  
<http://www.ScanSnapIT.com>



Simplify your office routines within the Macintosh environment with the compact and speedy ScanSnap S1500M. Process documents at the press of a button to instantly create PDF files (bundled with the full version of Adobe® Acrobat® 8.0 Professional) and then efficiently distribute, archive and access. Also bundled is the OCR engine ABBYY® FineReader for ScanSnap, which will allow for transforming scanned documents instantly into editable word or excel files.

Scan up to 50 mixed documents through the ADF ranging in size from business card to A3\* and watch as the digitised document is cropped, auto rotated, deskewed and since the scanner can cope with both single and double sided documents at the same time any blank pages will be removed.

A QuickMenu popup utility, if selected on scanning, allows for the efficient transmission of scanned data to a pre-defined folder, email address or printer. ScanSnap S1500M has a USB interface, can scan at speeds up to 20 pages or 40 images per minute and - with a footprint less than an A4 sheet of paper - will comfortably sit on any desktop.

The S1500M has improved multi-feed detection designed on ultrasonic multi-feed sensors which ensure that all documents are scanned and there are no accidental double feeds.



50 Sheets



Simplex  
20 ppm



Duplex  
40 ipm



600 dpi

### Options & Consumables (S1500 & S1500M)

 Paper separation module 50,000 sheets or 1 year

 Carrier sheet for A3 documents

 Pick roller – 100,000 sheets or 1 year

 Carry bag

\* A3 is possible through the use of an optional carrier sheet



The N1800 from Fujitsu adds networking capability to the ever expanding ScanSnap family of document scanners. Providing users with the ability to digitise everyday documents the N1800 can then facilitate the processing of that data to a local network, to an email address, to a colour printer, a fax machine, to a SharePoint folder, into a cloud service or a company's business processes.

The N1800 is an attractively designed and compact scanner that can easily be placed anywhere in the office. It is easy to set up via the intuitive touch panel which utilises a 'one push' interface.



Login screen

Main Menu screen

Preview screen (Scan viewer)

A range of automated functions such as page size detection, colour detection, blank page removal, automatic deskew, automatic orientation, ultrasonic multifeed detection and marker indexing ensure that not only are your documents scanned precisely and efficiently but operator involvement is kept to an absolute minimum before, during and after the scanning process.

With an ADF capacity of up to 50 sheets the N1800 can cope with a variety of mixed size and mixed thickness documents whilst delivering scanning speeds of up to 20 ppm or 40 ipm in A4 colour.



50 Sheets



Simplex  
20 ppm



Duplex  
40 ipm

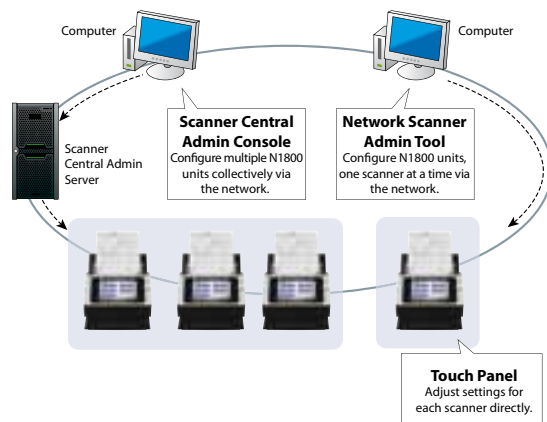


600 dpi

Advanced security features are paramount to the N1800 ensuring the safe and secure operation amongst multiple users and the protection of unauthorised access to scanned data, login authentication strictly limits what a user can do with the scanner and any scanned data can be output as a password protected pdf file. Prior to any processing any stored data on the scanners internal memory is encrypted and once processed this is deleted and for extra peace of mind any time the scanner is rebooted all data is erased.

The N1800 satisfies the digitising needs of any small networks that may use a file and/or email server, it is also more than comfortable serving more complex LDAP/LDAPS authentication based networks integrated with Microsoft Exchange Server, SharePoint and other application hubs.

An SDK is available for the N1800 to develop applications and further expand the functions of the device to meet your business needs. The N1800 offers centralised administration and job functions allowing for configuration of many units from the one location, additionally environment settings can be adjusted if needs be one at a time and a centralised point also allows for the monitoring of scanner usage.



## fi-5015C



The fi-5015C from Fujitsu makes office life easier and more efficient. The built in ADF (Automatic Document Feeder) enables the user to continuously process up to 50 pages in one batch rather than scanning one by one. Pages are scanned at speeds of up to 15 pages per minute and if there is a need to scan delicate or bound documents this can be done via the in-built flatbed.

The fi-5015C has been designed with the professional office user in mind allowing for convenient personal use as well as easy integration into document management solutions through the TWAIN and ISIS drivers. Typical document related tasks like storage, personal archiving and support of workflow are enabled and enhanced by making use of this device and packaged content.

This scanning solution consists of the scanner, full versions of Adobe® Acrobat® 9.0 Standard and the text recognition application ABBYY® FineReader 8.0 Professional as well as an easy to use capture application – ScandAll.

Everything that is needed for scanning to file, routing scanned copies to a printer, as well as retrieving information from documents that have been processed by the ABBYY® OCR engine can be found in this fi-5015C package.



50 Sheets



Simplex  
15 ppm



50 to  
600 dpi



## fi-6110

Fujitsu's fi-6110 scanner is an easy and affordable way for users to embrace professional document management, enabling easy archiving, processing and forwarding of everyday documents.

Combining the scanner with customised software will substantially simplify everyday office routines in small and medium sized businesses, introducing a more efficient and productive way of handling documents.

Whether through the integrated TWAIN or ISIS drivers, the scanner can be controlled from within most document management solutions. It can also be controlled through its programmable user panel allowing the ability for scanning directly to email, print or fax.

The ultra compact fi-6110 can scan at 20 ppm or 40 ipm in mono, grayscale and colour through the 50-sheet capacity ADF at resolutions of up to 300 dpi, the maximum resolution achievable is 600 dpi. Paper sizes from business card up to A4 or even extra long documents can be scanned with ease and even A3 scanning is supported.

The fi-6110 features the impressive ultrasonic multifeed detection, blank page deletion and is the first Fujitsu entry level scanner model to feature automatic paper size detection and page rotation ensuring that the sorting of documents prior to scanning becomes a thing of the past.

Bundled with the scanner is a full version of Adobe® Acrobat® 9.0 Standard allowing the ability to create editable PDF files and in addition the comprehensive capture client ScandAll Pro.



50 Sheets



Simplex  
20 ppm



Duplex  
40 ipm



50 to  
600 dpi

## fi-6130 and fi-6230



fi-6130

The fi-6130 and fi-6230 workgroup scanners are ideal scanners for small and medium sized businesses that need to archive documents, scan to OCR, implement a document management system or even create workflow solutions that allow for single or workgroup usage.

These scanners are amongst the fastest and most compact in their class with a duplex scanning performance of up to 80 ipm or 40 ppm in monochrome and grayscale (at 200 dpi) and an uncompromised colour scanning performance of 60 ipm or 30 ppm (at both 200 and 300 dpi).

The fi-6130 has a footprint of just 160 x 300 mm (D x W) and the fi-6230 measures 560 x 300 mm (D x W) ensuring when space is at a premium these units will sit comfortably and discretely on any desktop or back office environment.

The automatic document feeder (ADF) capacity is 50 sheets and the design of this feeder enables the user to continuously feed mixed batch documents containing paper of different weights and sizes. This effectively enables the digitization of large volumes of paper documents in minimal time. The fi-6230 also has a built in flatbed.

Impressive feeding is tantamount to the fact that these scanners are engineered with one of the most advanced paper separation modules in their class, the fi-6130 and fi-6230 are the first workgroup scanners equipped with reversing rolling technology (statement true as of March 2008) resulting in exceptional feeding reliability for an even wider variety of document weights. Furthermore the ADF is capable of scanning documents at up to 10 feet long and is even robust enough to feed up to three hard cards or embossed cards, which are up to 1.4 mm in thickness (both in portrait and landscape mode).



50 Sheets



Simplex  
40 ppm



Duplex  
80 ipm



600 dpi



fi-6230

The benefits of 'Multifeed Detection' is effortlessly combined with the efficiency of 'Intelligent Multifeed function' enabling the user to relax knowing that intentional double feeds that may trigger false multifeed alerts such as a taped receipt or sticky note can be manually bypassed whilst at the same time double feed detection is enabled.

The fi-6130 and fi-6230 are the first scanners in their class to offer highly valued automatic functions tightly integrated for dedicated document image processing such as auto colour, auto resize and auto deskew.

### Software bundling:

The fi-6130 and fi-6230 scanners come bundled with ScandAll Pro Version 1.5 image capture software as well as VRS Professional, which can be used for adding image enhancement options to the scanning process. VRS revolutionizes scanning and makes the process of scanning documents less costly in terms of time for preparation and of manual intervention during the scanning process.

Both fi-6130 and fi-6230 will operate on Windows 2000 Professional, Windows XP, Windows Server 2003 and Windows Vista.

The fi-6130 can be utilised alongside an optional imprinter (fi-614PR), such a unit enables the ability to print dates and other information on the back of the original document thus enabling the user to easily search and retrieve documents.



fi-6130 with  
Imprinter





## fi-6140 and fi-6240



fi-6140

Marking a change in design concept the fi-6140 and fi-6240 scanners expand Fujitsu's current portfolio of document scanners bringing capture reliability, fast speed and high daily throughput to the departmental scanning environment.

These impressive scanners will revolutionise how scanning and the capture process are supported at the desktop whilst at the same time improving user efficiencies.



Through a 50 page ADF the fi-6140 and fi-6240 scanners will process single sided documents at 60 pages per minute in monochrome and grayscale (200 dpi) and 40 images per minute in colour (300 dpi). Double sided documents will be scanned at 120 and 80 images per minute respectively.



50 Sheets



Simplex  
60 ppm



Duplex  
120 ipm



50 to  
600 dpi

Both scanners offer mixed batch capability allowing the user to continuously feed batches of documents ranging in thickness up to 210 g/m<sup>2</sup> and in size from A8 to A4 (even credit cards, plastic cards and alike). Additionally to protect thin and delicate documents a paper protection feature ensures that in the unlikely event that a jam has happened or is about to happen then the scanning process will be immediately stopped. The fi-6140 and fi-6240 also feature active separation modules additionally allowing for smoother feeding and capture reliability.

Minimising operator time further are intelligent functions such as multifeed ignore which helps ignore documents that may typically cause misfeed alerts such as documents with sticky notes attached.



fi-6240

Once a document has been processed a number of automatic functions will be performed to improve the onscreen image such as automatic colour detection, automatic resize and automatic deskew.

Bundled with both the fi-6140 and fi-6240 is ScandAll Pro Version 1.5 image capture software which effectively enables the scanners operators to easily take full control of the scanning process. The software allows the scanners to be driven through either TWAIN or ISIS drivers and additionally supports applying image



enhancement functionality to the capture process by utilising the bundled version of VRS Professional. This impressive software can be used to add further

image enhancement options to the scanning process such as intelligent content orientation recognition, background saturation and improved automatic enhancement tools.

Additionally bundled is a full version of Adobe® Acrobat® 9.0 Standard.



## fi-5530C2



The fi-5530C2 is the smallest scanner in its class to offer a dual SCSI/USB 2.0 interface and an A3 (or A4 landscape) ADF which can hold up to 100 sheets (A4, 80 g/m<sup>2</sup>). It can process mixed batches with document sizes from A8 to A3. Its space saving design ensures that the scanner can be placed in even the smallest of desk areas and its output tray can be folded away when not in use.



The scanner displays remarkably quick scanning speeds at up to 600 dpi resolution, 35 pages per minute can be achieved at 200 dpi in portrait mode and this increases to 50 pages in landscape mode. Duplex scanning is also possible at 70 and 100 ipm respectively.

Designed with the user in mind there are simple to use scan and send buttons that allow for one touch-operation. The potential risk of timely re-scanning and checking is minimized with an in-built ultrasonic double feed detection feature that prevents two or more sheets being fed at the same time. Page rotation and automatic paper size detection is available through the driver whilst auto-cropping and auto-deskew help to enhance the captured image.



100 Sheets



Simplex  
35 ppm



Duplex  
70 ipm



600 dpi

The fi-5530C2 includes ScandAll Pro Ver 1.0 image capture software, which allows the scanner to be driven through either TWAIN or ISIS drivers. It additionally supports utilising the bundled version of VRS, which is also part of the package. VRS Professional stands for utmost capturing simplicity and streamlined business process automation. It enables information workers to focus on their productive tasks, at the same time supporting them to capture information from paper documents by virtually pressing a button. VRS will dynamically adjust scanner settings for each document, ensuring next to perfect image quality every time you scan, without forcing you to master in scanning.

An imprinter is available as an option that enables documents to be endorsed with up to 40 characters once they have been scanned.

## fi-6750S

The fi-6750S is a production level scanner that combines a simplex ADF with an A3 flatbed module. It offers impressive scanning at speeds of 72 pages per minute in mono and colour (landscape, A4, at up to 300 dpi) and 55 ppm in A4 portrait at up to 300 dpi. Maximum achievable resolution is 600 dpi in colour, mono or grayscale.



The fi-6750S can effortlessly scan up to 200 sheets of varying weights, quality and sizes and can also scan paper up to 3m long. Paper size ranging from A8 to A3 can be scanned whilst differing in thickness from 31 g/m<sup>2</sup> up to 209 g/m<sup>2</sup>. A user positionable ADF that can be rotated through a full 180 degrees ensures optimisation of available space is possible as well as suiting right or left handed operators.

ScandAll Pro comes bundled as standard with the fi-6750S allowing the scanner to effortlessly link with Microsoft Office SharePoint Server for easy digitised document sharing and viewing administration. Adobe® Acrobat® 9.0 Standard is also bundled.

Operability is further enhanced through intelligent multifeed detection which whilst ensuring documents are not double fed also ensures false misfeed alerts do not occur by ignoring double layer zones of documents as may be the case when photos or sticky notes are purposely attached.



200 Sheets



Simplex  
55 ppm



600 dpi

## fi-6670 / fi-6670A and fi-6770 / fi-6770A



fi-6670 / fi-6670A

Experience exceptional performance with advanced scanning functionalities with the new production scanners from Fujitsu – fi-6670/fi-6770 and fi-6670A/fi-6770A; helping to increase efficiencies in production environments and ensuring capturing of high volumes of documents and multi-tasking is made a whole lot easier.

Scanning at a resolution of 200 dpi (A4 Landscape), up to 180 colour or mono images per minute or 90 pages per minute can be scanned through the 200 sheet ADF which comes as standard on all 4 models (fi-6770 and fi-6770A also have a built in flatbed). At 300 dpi these speeds are 160 ipm and 80 ppm and all models will scan at up to 600 dpi. Scan mixed batches ranging in size from A8 to A3 (even Trapezoid shaped documents can be scanned in their entirety, quality and thickness from 31 g/m<sup>2</sup> to 209 g/m<sup>2</sup>).

The fi-6670/fi-6770 and fi-6670A/fi-6770A are uniquely designed to take up minimal space whilst remaining user friendly. The fi-6670 series is equipped with user panels on both sides of the unit to suit specific spaces as well as the users preferred hand use, additionally it is incredibly compact with a small footprint (640 mm wide by 430 mm deep) and input and output trays that can be folded away when not in use. The ADF of the fi-6770 series can be rotated a full 180 degrees to allow for right or left handed feeding as well as being positioned in the best possible setting to suit the space requirements.



Ultrasonic double feed detection comes as standard which whilst watching for double feeds and stopping the scanner well in advance also helps eliminate false double feeds which may come about as a result of pages scanned that may have sticky notes or photos attached. Scanned images are further enhanced by a circular and punch hole removal functionality.

A host of software is bundled with these new models to improve the quality of the scanned image and allow for easier retrieval at a later date: Adobe® Acrobat® 9.0, ScandAll Pro with Microsoft Sharepoint connectivity and VRS Professional are all included as standard.

The fi-6670A and fi-6770A come with a pre-installed VRS CGA board that offers hardware supported, accelerated image processing, functionality and performance. Highly efficient scanning is guaranteed when combined with VRS by creating even clearer scanned image as well as experiencing faster speeds even with combinations of image enhancement processes.

Both the fi-6670 and fi-6670A can be optionally utilised with an imprinter that can print pre-defined characters on the back of scanned documents.



fi-6770 / fi-6770A



200 Sheets



Simplex  
70 ppm



Duplex  
140 ipm



600 dpi



## fi-6800



Embracing a compact, robust and stylish design Fujitsu's production volume fi-6800 scanner is perfect for applications requiring high throughput, high speed and high quality document scanning. The fi-6800 also offers superb capture reliability and image processing.

Impressive scanning speeds help set the fi-6800 apart. At 300 dpi in A4 landscape mode 130 pages per minute can be achieved whether scanning in mono or colour. This is doubled to 260 images per minute in duplex. The ADF hopper can take a maximum 500 sheets.



Effortlessly scan mixed batches of documents ranging from A8 to A3 in size as well as differing quality and thickness (20 to 209 g/m<sup>2</sup>). Additionally the fi-6800 can scan extra long documents at up to 3048 mm in length.

The fi-6800 has the smallest footprint in its class measuring just 460 by 430 mm. This combined with a foldable input tray and near silent operation make it a perfect companion sitting comfortably and discretely in any environment.



A host of functions help increase efficiencies and productivity including automated patch code or barcode triggered batch separation and file or folder naming. Also post-scan task inhibitors such as 'Automatic Stacker' and 'Automatic Image Quality Checker', are highly beneficial functionalities introduced with the fi-6800. Paper feed problems are tackled before they happen with functions such as 'Paper Protection' and 'Multifeed Protection'.

Hardware supported VRS Professional is pre-installed on the fi-6800 allowing for more sophisticated automated image enhancement and minimal operator intervention. Optional post imprinters are available for the printing of characters on front or back side of scanned documents.



500 Sheets



Simplex  
100 ppm



Duplex  
200 ipm



600 dpi

## fi-5950



The fi-5950 is a production level scanner built for applications needing to scan high volumes reliably and quickly whilst minimising the pre and post processing tasks of the operator. The fi-5950 can scan a wide range of paper qualities varying in size from A8 to A3 and thicknesses from 31 to 209 g/m<sup>2</sup> through the 500-sheet capacity hopper.



The fi-5950 provides selectable processing options through TWAIN or ISIS driver settings, which are supported by UW-SCSI and USB 2.0 interfaces. Additionally it is equipped with a built in CGA5 accelerator board that processes numerous VRS image enhancement routines in a hardware accelerated mode. In combining VRS functionality with the unmatched CGA board's image enhancement and processing speed, the fi-5950 produces high quality document images that require little or no additional operator intervention. Some typical operations include: intelligent content orientation, automatic colour detection, blank page detection and deletion, as well as background saturation.



500 Sheets



Simplex  
105 ppm



Duplex  
210 ipm



600 dpi

The overall processing speed is additionally enhanced due to new high speed CCD technology. The scanner can scan at resolutions of up to 600 dpi, and at 300 dpi scanning speeds are an impressive 135 pages per minute in simplex and 270 images per minute in duplex in both colour and mono modes (A4 landscape).

The fi-5950 comes equipped with three individual ultrasonic sensors which greatly increase the reliability of double feed detection. This, together with superior paper processing and continuous document protection, ensures that if sticky or stapled documents are included in the batch, the sensors identify an overskew incident and interrupt the scanning process to prevent possible damage to the document.

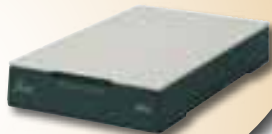
Available as optional extras are pre- and post imprinters which enable printing of up to 40 characters as an index on the front or back of scanned documents. This additional security may be required in areas such as banking and insurance and can be combined with the driver controlled virtual imprinting function.



An active output stacking tray for neat batches helps prevent paper sheets from curling. The fi-5950 emits incredibly low noise during operation at less than 55 dB. It features easy access to all consumables and paper path areas. When not in use the hopper module can be closed ensuring minimal desktop space is used as well as keeping the interior of the scanner free from dust.



## fi-60F



The fi-60F is the first true flatbed-only document scanner developed by Fujitsu especially for the purpose of easily and quickly scanning single documents at a time. It provides ultra-compact design and absolutely interference-free convenience. The flatbed device is capable of scanning documents up to the size of 105 x 148 mm (A6 format) in colour (24 bit), grayscale (8 bit) and b/w.



Documents are automatically scanned, deskewed and cropped to their actual size in less than 2 seconds including preparation, further image enhancement and presentation.

The fi-60F is aimed at vertical markets such as banking and finance, medical, tourism, immigration and postal services – anywhere where there is a need for scanning documents such as passports, IDs, prescriptions and driving licenses.

Even with the lid opened, documents are automatically scanned, deskewed and cropped to their actual size, regardless of how they are placed onto the flatbed.

The scanner can be conveniently controlled through most document management systems with the integrated TWAIN or ISIS driver and can be interfaced with most operating systems that are USB 2.0 capable.

## fi-5000N

The fi-5000N network adapter for document scanners expands the possibilities of utilising the benefits of professional scanning systems in the workgroup arena. Especially, Fujitsu's document scanner models fi-6130, fi-6230, fi-6140, fi-6240 and fi-5530C2 can be accessed by multiple users without limitation of functionality. Moreover, access becomes easy, safe and secure.



### Expanding scanner utilisation

With the fi-5000N utilising the attached document scanner from two directions becomes available:

#### 1. Scan-to-Network

In this scenario the scanning process is initiated from the scanner side. The user walks up to the fi-5000N and authorises himself with his fingerprint, thus activating a pre-defined scanning profile (resolution, orientation, target format, target folder). Then he places his original documents onto the scanner's feeder or flatbed and presses the scan button on the scanner panel. The scan job is automatically processed.

#### 2. Pull-from-Network

Multiple users can access the fi-5000N attached scanner just as if it were directly connected to their PC. Dedicated tasks like archiving can be achieved with little operational change. The user addresses the scanner from within his regular DMS application and defines the scanning parameters

as required. Then he places the documents onto the scanner's feeder and activates the scanner by placing his finger on the fi-5000N fingerprint scan unit. The scanning process begins and the resulting files are routed through to the initiating application.



## fi-6010N



Fujitsu's fi-6010N is a network scanning solution combining a small footprint with high performance and capture reliability. An ideal scanning solution for sharing documents in today's multi-location, global environment, the fi-6010N actually is much more than that: a truly professional document capture device for productive Enterprise Content Management (ECM).

Scan mixed sized documents from A8 up to A4 size through the 50 page ADF (A3 and B4 scanning is also possible through the use of optional carrier sheets). 25 pages per minute can be scanned in A4 portrait and at a resolution of 200 dpi whilst when scanning in duplex 50 images per minute are achievable. The fi-6010N can scan at up to 600 dpi in resolution ensuring image quality is of the best in its class.

Easy and friendly usability is characteristic of the fi-6010N, a built in keyboard (US 101 type) regularly enables data entry and this is conveniently positioned underneath a large touch screen colour LCD which allows for instant image viewing and for document processing to application in one single convenient area. A keyboard lay over cover supports multilingual usage supporting UK English, German, Italian, French, Spanish, Portuguese, Russian, Korean and Turkish.

The office linking functionalities offered by the fi-6010N help to process efficiencies due to ease of operator use and subsequent distribution. Once you have logged into the network, simply select the destination or application and press the scan button; whether you wish to save to a network folder for easy information sharing, for attaching to individual or group emails, for printing in place of a photocopier or to a fax machine where images can be viewed prior to transmission.

User operability is additionally made easy through the 'JOB function' – this supports the remote setting up of individualised 'one touch' commands allowing for the designation of pre-assigned scanning and distribution. Additionally, multiple fi-6010N can be controlled from one remote location whether through allocating individual settings, monitoring operating status or adding in software settings.

A fi-6010N software development kit (SDK) is available to assist with the development of integrated scanning and information capture applications that allow for image display, keyboard input, indexing, system linkage, automatic field population, to name just a few. This SDK supports Microsoft .NET Framework 3.5 for high performance application development.



The fi-6010N supports secure encrypted File Transfer Protocol over SSL/TLS file transfers and encrypted data authentication with LDAPS thereby facilitating further peace of mind.



50 Sheets



Simplex  
25 ppm



Duplex  
50 ipm



50 to  
600 dpi

**Rack2-Filer** Rack2-Filer is a feature-rich scanning and digital data organising application incorporating an ultra-intuitive user interface that gives users the benefits of what they love best about the paper world while harnessing the power and sophistication they depend upon within the electronic realm. With Rack2-Filer and your Fujitsu ScanSnap scanner, you can easily scan, edit, distribute and organise all of your digitized documents.



Compatible with Windows 2000, XP, Vista and 7

ScandAll Pro comes bundled as standard with all Fujitsu fi-series scanners. Next to all other prime functionalities, the software allows the scanners to effortlessly link with Microsoft Office Sharepoint Server (MOSS) for easy digitised document sharing and viewing administration.

ScandAll PRO supports both TWAIN and ISIS standards and allows the user to switch between either the TWAIN driver or the ISIS driver for scanning images with the scanner. Scanning can be done on an adhoc basis by configuring the settings such as file format, destination and scanning parameters every time you scan which is appropriate for infrequent and varied scanning.

Alternatively if you wish to use the same settings repeatedly you can configure the necessary elements and create a profile which is saved on the system, multiple profiles can be created meaning the user just chooses from these before scanning singular or batches of documents. The need to decide for individual settings is eliminated.

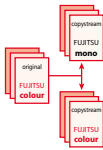
ScandAll Pro supports a job separation function with patch code sheets. The patch code based job separation function can divide multiple pages of scanned images into pre-determined units and save them to different folders separately without interruption. Both PDF and TIFF (multipage) file formats are supported, to name just two of the most commonly used ones.

Similarly scanning using barcode printed sheets is also supported by ScandAll Pro. This job separation function will divide multiple pages of scanned images into pre-determined units and save to different folders. Not only the document counter but also the barcode recognition result strings can be used for the folder or file names.

For scanner models like the fi-6750S ScandAll Pro also enables virtual duplex scanning through the ADF by automatically pairing front and back page scans.

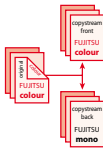


Soft IPC V2.5 is an optional software image enhancement tool for Fujitsu workgroup or departmental scanners. Alongside TWAIN or ISIS drivers it automatically performs advanced binarisation processes and produces b/w and colour images simultaneously.



### Simultaneous creation of b/w and colour images

Original documents are scanned and automatically stored into two separate files – one containing colour data, the other holding monochrome information. The colour file serves as a reference for archiving, whereas the b/w data is handed over to the next processing step, for example, text recognition.



### Separate scanning profiles for front and back page

Both sides of the original document are scanned in one single step. The operator can have front pages automatically created in colour and reverse sides created in b/w, or vice versa. For example in case reverse sides contain general terms and conditions, such as on invoices.

### Automatically optimised monochrome scanning

Soft IPC V2.5 provides pre-defined templates that can be used for most common document types. For example, if text documents are to be scanned, fixed threshold function is available. There is no need to interfere with any other settings. In comparison, mixed document content consisting of photos and text might require more adjustment possibilities, especially if OCR is to be applied afterwards. This is why there are appropriate templates like OCR DTC or random dither, leaving open the opportunity to change dither, gradation, threshold, brightness and contrast values. When batch scanning of documents is a regular task, Fujitsu Soft IPC V2.5 significantly increases productivity.

### Soft IPC V2.5 Specifications

Necessary drivers	Latest version of TWAIN or ISIS driver
Functions with TWAIN driver only	B/w and colour image simultaneously/individual b/w or colour for front and reverse side/24 bit colour
Functions with TWAIN and ISIS drivers	Fixed Threshold/OCR DTC (Pre Filtering/Gradation/Threshold Table/Smoothing/Noise Removal)/Form DTC (Sensitivity/Threshold)/Dither (Dither pattern/Outline detect threshold/Brightness/Contrast)/Minimise Average Error (Outline detect threshold/Brightness/Contrast)/Random Dither (Based Dither/Gradation/Outline detect threshold/Brightness/Contrast)



The exceptional VRS enhancement tools now come bundled with most Fujitsu scanners.

### VRS Professional bundled with:

Software version: fi-6130, fi-6230, fi-6140, fi-6240, fi-5530C2, fi-6670 and fi-6770.

Hardware: CGA supported version: fi-6670A, fi-6770A, fi-6800 and fi-5950.

VRS (Virtual ReScan) revolutionises scanning and makes the process of scanning documents less costly in terms of time for preparation and of manual intervention during the scanning process. The most important part of scanning and capturing images is your ability to find, retrieve and use them later.

The advanced technology in VRS Professional literally cleans up scanned images which in turn makes for a huge improvement in the accuracy from your OCR and ICR software. VRS increases productivity, efficiency and in time sees a greater return for your scanning investment.

### Key features of VRS Professional include:

- Advanced Clarity makes even “unreadable” images legible
- Automatic image orientation adjusts skewed images, even completely rotating upside down ones, so all captured images are oriented in the same direction
- Intelligently determines if a page is blank and can be eliminated from the workflow
- Correctly identifies and retains colour when it is integral to a document (e.g., logo, photo, date stamp) and eliminates it when it is not (e.g., coloured paper stock)
- Removing image noise compacts file size, reducing network traffic and storage requirements
- Scanner Configuration Utility simplifies scanner set-up and selection

# Assurance Programme

All Services Operate Monday - Friday,  
09:00 am - 17:00 pm local time.



## What is the Assurance Programme?

The Assurance Program from Fujitsu offers a wide range of Service Plans to enhance the Product Warranty included with Fujitsu document scanners.

As the manufacturers official program, you can be confident in the investment made by Fujitsu to ensure the highest standards of support you would expect from one of the leading global IT companies.

For further information visit <http://emea.fujitsu.com/assurance>

## Protect Your Investment

With the growing demand for document imaging solutions and an increase in business dependency on scanning and managing documents electronically, the Assurance Program provides the peace of mind and business continuity that customers demand, allowing you to focus on your business while we focus on your scanner.

All services can be purchased from your scanner supplier using specific Fujitsu service part numbers. Please visit <http://www.fujitsu.com/assurance> for further information.

	Product Warranty	Bronze	Silver	Gold	Platinum
<b>Personal Scanners</b>					
<b>ScanSnap S1100 and ScanSnap S1300</b>					
Telephone Hotline Support	–		•		
Online Support Ticketing System	•		•		
Remote Desktop Support	–		•		
Advance Exchange Product Replacement within:	7 Days		1-2 Days		
Spare Parts, Labour & Shipping Included (Excluding Consumables)	•		•		
Accidental Damage Cover	–		•		
Available for:	2 Years		4 Years		
Renewals Available For:	–		1 Year		
<b>ScanSnap S1500 and S1500M</b>					
Telephone Hotline Support	•		•	•	•
Online Support Ticketing System	•		•	•	•
Remote Desktop Support	–		•	•	•
Advance Exchange Product Replacement within:	1-2 Days		1-2 Days	1-2 Days	1-2 Days
Customers Original Unit Returned After Repair (Exchange PLUS)	–		–	•	–
Spare Parts, Labour & Shipping Included (Excluding Consumables)	•		•	•	•
Accidental Damage Cover	–		–	–	•
Available for:	2 Years		4 Years	4 Years	4 Years
Renewals Available For:	–		1 Year	1 Year	1 Year
<b>Workgroup, Departmental and Network Scanners</b>					
<b>fi-5015C, fi-6110, fi-6130, fi-6230, fi-6140, fi-6240, fi-5530C2, fi-6010N and ScanSnap N1800</b>					
Telephone Hotline Support	•	•	•	•	•
Online Support Ticketing System	•	•	•	•	•
Remote Desktop Support	–	–	•	•	•
Advance Exchange Product Replacement within:	1-2 Days	1-2 Days	1-2 Days	–	–
Customers Original Unit Returned After Repair (Exchange PLUS)	–	–	•	–	–
Visit By Engineer Carrying Spare Parts Kit: Response/Fix within:	–	–	–	8hr	8 + 8
Repairs Carried Out Onsite	–	–	–	•	•
Spare Parts, Labour & Shipping or Travel Included (Excluding Consumables)	•	•	•	•	•
Temporary Contingency Equipment if Repair not Possible	–	–	–	–	•
Accidental Damage Cover	–	–	–	–	•
Available for:	1 Year	2-5 Years	1-5 Years	1-5 Years	1-5 Years
Renewals Available For:	–	1-2 Years	1-2 Years	1-2 Years	1-2 Years

### Abbreviations & Terminology:

**Advance Exchange** = Replacement of the faulty scanner with a new or as new unit.

**Advance Exchange PLUS** = Double Exchange, original product is returned after repair.

**Onsite Service** = A visit by a technician with a spare parts kit to repair the product at your premises.

**PM** = Preventative Maintenance. A scheduled visit by a technician to disassemble, clean, lubricate, recalibrate, reassemble and test.

**ADC** = Accidental Damage Cover

**NBD** = Next Business Day

**8Hr Response** = A visit by a technician with spare parts within 8 working hours of the fault report.

**FW** = Firmware

**HW** = Hardware

**FW+HW** = Firmware + Hardware

**p/a** = per annum (per year)

**8 + 8** = 8 Hour response and 8 Hour fix

# Assurance Programme (continued)

All Services Operate Monday - Friday,  
09:00 am - 17:00 pm local time.



Low-Volume Production Scanners				
fi-6750S, fi-6670, fi-6670A, fi-6770 and fi-6670A				
Telephone Hotline Support	•		•	•
Online Support Ticketing System	•		•	•
Remote Desktop Support	–		•	•
Visit By Engineer + Spare Parts Kit: Response/Fix within:	NBD		8+8	8+8
Repairs Carried Out Onsite	•		•	•
Spare Parts, Labour & Travel Included (Excluding Consumables)	•		•	•
Temporary Contingency Equipment if Repair not Possible	–		•	•
Preventative Maintenance Visits per year:	–		1x PM / p/a	2x PM / p/a
Accidental Damage Cover	–		–	•
Available for (in years):	1 Year		2-5 Years	1-5 Years
Renewals Available For:	–		1-2 Years	1-2 Years
Mid-Volume Production Scanners				
fi-6800 and fi-5950				
Telephone Hotline Support	•		•	•
Online Support Ticketing System	•		•	•
Remote Interactive Support	–		•	•
Visit By Engineer Carrying Spare Parts Kit: Response/Fix within:	NBD		8+8	8+8
Repairs Carried Out Onsite	•		•	•
Spare Parts, Labour & Travel Included (Excluding Consumables)	•		•	•
Temporary Contingency Equipment if Repair not Possible	–		–	•
Preventative Maintenance Visits per year:	1x PM / p/a		1x PM / p/a	2x PM / p/a
Periodic Product Upgrades (Performed during PM Visits)	–		F	F+H
Accidental Damage Cover	–		–	•
Available for (in years):	1 Year		2-5 Years	1-5 Years
Renewals Available For:	–		1-2 Years	1-2 Years
Specialist Products				
fi-60F and fi-5000N				
Telephone Hotline Support	•		•	
Online Support Ticketing System	•		•	
Advance Exchange Product Replacement within:	1-2 Years		1-2 Years	
Spare Parts, Labour & Shipping Included	•		•	
Available for (in years):	1 Year		1 Year	
Renewals Available For:	–		1 Year	

For further information visit  
<http://emea.fujitsu.com/assurance>

### Abbreviations & Terminology:

**Advance Exchange** = Replacement of the faulty scanner with a new or as new unit.

**Advance Exchange PLUS** = Double Exchange, original product is returned after repair.

**Onsite Service** = A visit by a technician with a spare parts kit to repair the product at your premises.

**PM** = Preventative Maintenance, A scheduled visit by a technician to disassemble, clean, lubricate, recalibrate, reassemble and test.

**ADC** = Accidental Damage Cover

**NBD** = Next Business Day

**8Hr Response** = A visit by a technician with spare parts within 8 working hours of the fault report.

**FW** = Firmware

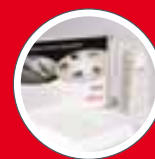
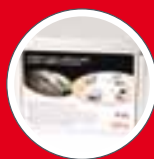
**HW** = Hardware

**FW+HW** = Firmware + Hardware

**p/a** = per annum (per year)

**8 + 8** = 8 Hour response and 8 Hour fix

## Scanner Care: Consumables and Cleaning Kits



To keep your Fujitsu scanner working at its optimum, it is vital that a simple cleaning regime is in place. Using these PFU approved cleaning kits will ensure that things are kept running smoothly without disruption to scanning operation.

In addition, it will minimise scanning downtime to keep a consumable kit on hand, ready to replace worn rollers and pads.

Cleaning Kit	Contents	Expected Life	Order Number
ScanSnap Cleaning Kit for S1100, S300, S300M, S1300, fi-5110EOX, fi-5110EOX2, fi-5110EOXM, S500, S500M, S510, S510M, S1500, S1500M, fi-5110C, fi-6110	24 x F1 Fluid Impregnated Wipes, Instructions	24 Applications	SC-CLE-SS
Workgroup & Departmental Scanner Cleaning Kit for fi-5015C, fi-4120C, fi-4220C, fi-4120C2, fi-4220C2, fi-5120C, fi-5220C, fi-6130, fi-6230, fi-6140, fi-6240, fi-4530C, fi-5530C, fi-5530C2, fi-4340C fi-6000NS, fi-6010N, N1800	72 x F1 Fluid Impregnated Wipes, Instructions	3 months @ 1 Application Per day, 1 month @ 3 Applications Per day	SC-CLE-WGD
Low Volume Scanner Cleaning Kit for M4097D, fi-4640S, fi-4750C, fi-4750L, fi-5650C, fi-5750C, fi-6750S, fi-6670, fi-6670A, fi-6770, fi-6770A, fi-6800	1 x Bottle F1 Fluid, 75 x Lint Free Cleaning Cloths, Instructions	3 months @ 1 Application Per day, 1 month @ 3 Applications Per day	SC-CLE-LV
High Volume Scanner Cleaning Kit for M4099D, fi-4990C, fi-4860C, fi-4860C2, fi-5900C, fi-5950	1 x Bottle F1 Fluid, 1 x Bottle F2 Fluid, 75 x Lint Free Cleaning Cloths, Instructions	3 months @ 1 Application Per day, 1 month @ 3 Applications Per day	SC-CLE-HV

Consumable Kit	Contents	Expected Life	Order Number
Consumable Kit for ScanSnap S300, S300M, S1300	1 x Pick Roller, 2 x Pad Assembly	Up to 100k Scans	CON-3541-010A
Consumable Kit for ScanSnap S1500, S1500M, N1800	1 x Pick Roller, 2 x Pad Assembly	Up to 100k Scans	CON-3586-013A
Consumable Kit for ScanSnap fi-5110EOX, fi-5110EOX2, fi-5110EOXM, S500, S500M, S510, S510M, fi-5110C, fi-6110	1 x Pick Roller, 2 x Pad Assembly	Up to 100k Scans	CON-3360-001A
Consumable Kit for fi-5015C	1 x Pick Roller, 5 x Pad Assembly	Up to 100k Scans	CON-3209-009A
Consumable Kit for fi-4120C, fi-4220C	2 x Pick Roller, 4 x Pad Assembly	Up to 200k Scans	CON-3289-017A
Consumable Kit for fi-4120C2, fi-5120C, fi-4220C2, fi-5220C, fi-6010N, fi-6000NS	2 x Pick Roller, 4 x Pad Assembly	Up to 200k Scans	CON-3289-003A
Consumable Kit for fi-6130, fi-6230, fi-6140, fi-6240	2 x Pick Roller, 2 x Brake Roller	Up to 400k Scans	CON-3540-011A
Consumable Kit for fi-5530C, fi-5530C2	2 x Pick Roller, 4 x Pad Assembly	Up to 400k Scans	CON-3334-004A
Consumable Kit for fi-4340C	2 x Pick Roller, 4 x Pad Assembly	Up to 400k Scans	CON-3277-005A
Consumable Kit for fi-5650C, fi-5750C	2 x Pick Roller, 2 x Brake Roller	Up to 500k Scans	CON-3338-008A
Consumable Kit for fi-6670, fi-6670A, fi-6770, fi-6770A, fi-6750S	2 x Pick Roller, 2 x Brake Roller	Up to 500k Scans	CON-3576-012A
Consumable Kit for fi-4860C, fi-4860C2	2 x Pick Roller, 2 x Brake Roller, 2 x Separation Pad	Up to 600k Scans	CON-4315-007A
Consumable Kit for fi-5900C, fi-5950 – 2 Pack	2 x Pick Roller, 2 x Brake Roller, 2 x Separation Pad, 2 x Separation Roller	Up to 1.2m Scans	CON-3450-002A
Consumable Kit for fi-5900C, fi-5950 – 6 Pack	6 x Pick Roller, 6 x Brake Roller, 6 x Separation Pad, 6 x Separation Roller	Up to 3.6m Scans	CON-3450-006A
Consumable Kit for M4099D, fi-4990C	1 x Pick Roller Assembly, 1 x Brake Roller, 1 x Separation Pad	Up to 300k Scans	CON-4315-014A
Consumable Kit for fi-4750L	1 x Pick Roller, 2 x Pad Assembly	Up to 200k Scans	CON-3951-015A
Consumable Kit for M4097D, fi-4640S, fi-4750C	1 x Pick Roller, 2 x Pad Assembly	Up to 200k Scans	CON-3951-016A
Consumable Kit for fi-6800	1 x Pick Roller, 1 x Brake Roller, 1 x Separation Roller	Up to 600k Scans	CON-3575-001A
Consumable Kit for fi-6800 – 2 Pack	2 x Pick Roller, 2 x Brake Roller, 2 x Separation Roller	Up to 1.2m Scans	CON-3575-002A

## ISV Partner Programme and Independent Software Vendor Collaboration Centre (ICC)

PFU have initiated the ISV Partner Programme to further support the development of document related solutions throughout Europe's business environments. This programme is set to make the benefits of document management solutions transparent for business users, who are looking into first time installations as well as expansion or migration of existing solutions. Furthermore, the ISV Partner Programme makes it easy for ISVs to integrate document capture hardware efficiently and reliably into their solutions. New software versions can be tested prior to their release, assuring business users of their functional capabilities and flawless interoperability with Fujitsu's document scanners.

Fujitsu acknowledges that Enterprise Content Management (ECM) is a vital process for an organisation to provide a market and society with valuable information, products and services. It is a crucial step for a company to implement a proper ECM, utilising various infrastructures and tools in the ever-evolving IT technology arena.

PFU is proud to offer an unequalled gateway to Europe and its enterprise customers – supporting the strive to expand and exploit business opportunities for:

- Document Related Technologies (DRT)
- Document Management & Archiving (DMA)
- Enterprise Content Management (ECM)
- Electronic Document & Records Management (EDRM)
- Information Management
- Forms Processing
- Workflow Processing
- Industrial Collaboration

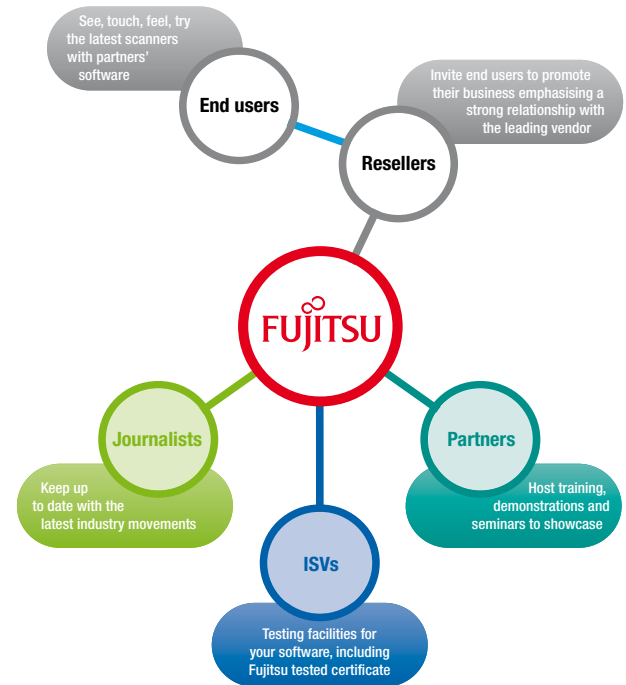
The ISV Partner Programme is one building block to standardise the process of implementation and to provide confidence in making the right choice. As an integral part of this offering, PFU hosts the ICC that is open to the public on request.

## What is the ICC?

The Fujitsu ICC is set up to be the primary point of information and assistance for seeing, understanding, testing and experiencing complete document related solutions. Located in London, ISVs, VARs, SIs, partners and enterprise users from all over Europe now have a unique location within comfortable reach where they can actually put their hands on what would otherwise be intangible – their future solution.

- Check that your latest software works with Fujitsu scanners
- Share the value of your Document Management Solution with your customers
- Discover why you need ECM to expand your corporate value

To become an active member of the ISV partner community, simply contact PFU and learn more about the programme. We will then coordinate deployment of your solution into the ICC and discuss further possibilities of collaboration and support.



## The Imaging Channel Program

The Imaging Channel Program has been designed to deliver real value to our community of imaging distributors, solution partners, resellers and end customers. By creating a collaborative environment where participation and interaction within the community is encouraged, new business opportunities are generated and leveraged by each channel member in more EMEA regions, more vertical markets and more end customer applications.

The program provides you, our Imaging Channel Partner with a reliable and open platform to achieve profitable growth by sharing expertise and experience in a co-operative atmosphere and helps end customers identify you as the most knowledgeable and competent partner for their document management projects and investments.

Most importantly, as a PFU Imaging Partner you have the opportunity to grow your business in new verticals, new applications, new regions, provide best-in-class imaging products and compete more effectively in today's marketplace.

### **In particular the program offers you the opportunity for:**

- **More profitable business**  
From increased sales opportunities and a range of benefits and incentive programs to reduce your cost of sales
- **Close Co-operation**  
With a supplier who is 100% committed to the channel. Our success is dependent upon yours, so your best interests are at the heart of our partnership
- **Increased Customer Satisfaction**  
Through easily identifiable, proven expertise and enhanced confidence in Fujitsu Imaging products
- **Enhanced skills**  
Via exclusive access to expert knowledge and valuable resources, enabling the delivery of Fujitsu imaging products to end customers

**To Register or find out more information**  
[www.imaging-channel-program.com](http://www.imaging-channel-program.com)

### **Program Benefits**

Depending on your certification level you can get access to a list of exclusive benefits:

- **Rebate Programs**  
We offer tiered rebates to channel partners based on the attainment of certain revenue goals
- **Lead Generation Programs**  
Access to pre-qualified Sales Leads generated by PFU
- **Co-marketing support**  
A Market Development Funds budget is available to assist our Imaging Partners in building a strong sales pipeline
- **Sales Incentive**  
We purposefully design incentives that are attainable and lucrative for our resellers
- **Project Registration and Pricing**  
Registering your major projects you get the possibility to improve your margins on specific end-user opportunities and enhanced probability to win the deal
- **Sales and Technical Support**  
Partners have a dedicated PFU Partner Manager to help build their business, and the support of our Channel Marketing and Technical Sales teams
- **Demonstration and Evaluation Units**  
Demonstration units are provided at a discount to resellers and enablers
- **Partner Advisory Forum and Partner Conferences**  
Our partner advisory forums and partner conferences are key venues to propose and evaluate new products, openly discuss market strategies and tactics, and discuss ideas to build a stronger partnership with you
- **Exclusive use of PFU Collaboration Centre**  
Take advantage of our state-of-the art technology facility where you can showcase your solutions, attend Industry seminars, invite your customers and generate more business by collaborating with other Fujitsu Imaging Community members

SPECIFICATIONS

			S1100	S1300	S1500	S1500M	N1800	fi-5015C	fi-6110	fi-6130	fi-6230	fi-6140	fi-6240	fi-5530C2	fi-6750S	fi-6670	fi-6670A	fi-6770	fi-6770A	fi-6800	fi-5950	fi-60F	fi-6010N
<b>Scanning speed</b>	Simplex (mono)	Speed at 200 dpi, DIN A4, portrait (ppm)	8 <sup>5,6</sup>	8 <sup>5,6</sup>	20 <sup>6</sup>	20	15	20 <sup>6</sup>	40	40	60	60	35	55	70	70	100	105	25				
	Simplex (colour)	Speed at 200 dpi, DIN A4, portrait (ppm)	8 <sup>5</sup>	6 <sup>5</sup>	20 <sup>1</sup>	20	15 <sup>1</sup>	20 <sup>6</sup>	30 <sup>9</sup>	30 <sup>6</sup>	40	40	35	55	70	70	100	105	25				
<b>Duplex scanning</b>	Duplex (mono)	Speed at 200 dpi, DIN A4, portrait (ipm)		16 <sup>5,6</sup>	40 <sup>6</sup>	40		40 <sup>6</sup>	80	80	120	120	70	140	140	200	210	50					
	Duplex (colour)	Speed at 200 dpi, DIN A4, portrait (ipm)		12 <sup>5</sup>	40 <sup>1</sup>	40		40 <sup>6</sup>	80 <sup>9</sup>	80 <sup>6</sup>	80	80	70	140	140	200	210	50					
<b>Document feeding mode</b>	Automatic Document Feeder (ADF) Flatbed		•	•	•	•	•	•	•	•	•	•	•	•	•	•	•	•	•	•	•	•	•
<b>ADF capacity</b>			1	10	50	50	50	50	50	50	50	50	100	200	200	200	200	500	500				50
<b>Double feed detection feature</b>																							
<b>Ultrasonic double feed detection feature</b>					•	•		•	•	•	•	•	•	•	•	•	•	•	•	•	•	•	•
<b>Interface (see description inside)</b>			USB 2.0	USB 2.0	USB 2.0	RJ-45	USB 2.0	USB 2.0	USB 2.0	USB 2.0	SCSI-2	SCSI-2	SCSI-2	SCSI-2	USB 2.0	UW-SCSI	UW-SCSI	UW-SCSI	UW-SCSI	UW-SCSI	USB 2.0	USB 2.0	RJ-45
<b>Image reproduction</b> (all models have black/white, grayscale and colour output)			•	• <sup>2</sup>	•	•	•	•	•	•	•	•	•	•	•	•	•	•	•	•	•	•	•
<b>Light source</b>	White lamp		LED RGB	LED RGB	•	•	•	•	•	•	•	•	•	•	•	•	•	•	•	•	•	•	LED RGB
<b>Dropout colour red, green, blue selectable</b>																							
<b>Digital colour dropout function / Multistreaming / Blank Page Detection</b>																							
<b>Document size</b>	ADF Min.	DIN format	A8	A8	A8	A8	A6	A8	A8	A8	A8	A8	A8	A8	A8	A8	A8	A8	A8	A8	A8	A8	A8
		mm	25.4 x 25.4	50.8 x 50.8	50.8 x 50.8	52 x 74	115 x 140	52 x 74	52 x 74	52 x 74	52 x 74	52 x 74	52 x 74	52 x 74	52 x 74	52 x 74	52 x 74	52 x 74	52 x 74	52 x 74	52 x 74	52 x 74	52 x 74
	ADF Max.	DIN format	A4 <sup>4</sup>	A4	A4 <sup>4</sup>	A4	A4	A4	A4	A4	A4	A4	A4	A3	A3	A3	A3	A3	A3	A3	A3	A3	A4 <sup>4</sup>
		mm	216 x 360	216 x 360	210 x 297	210 x 297	210 x 360	216 x 356	216 x 356	216 x 356	216 x 356	216 x 356	216 x 356	297 x 420	297 x 420	297 x 420	297 x 420	297 x 420	297 x 420	297 x 420	297 x 420	297 x 420	210 x 297
	Flatbed	DIN format					A4				A4		A4		> A3		> A3					A6	
<b>Optical resolution (dpi)</b>	ADF/FB (where applicable)		600	600	600	600	600	600	600	600	600	600	600	600	600	600	600	600	600	600	600	600	600
<b>Standard equipment</b>	Operator panel																						
	Document background selectable for ADF (white/black)																						Black Pad
	Paper counter			•	•	•	•	•	•	•	•	•	•	•	•	•	•	•	•	•	•	•	•
<b>Standard image processing functions</b>	Deskew and Autocropping		•	•	•	•	•	•	•	•	•	•	•	•	•	•	•	•	•	•	•	•	•
	Special halftone pattern "Error Diffusion"																						
	JPEG Data compression		•	•	•	•	•	•	•	•	•	•	•	•	•	•	•	•	•	•	•	•	•
	Image emphasis																						
	Image memory					16 MB		16 MB	64 MB	64 MB	256 MB	256 MB	64 MB	384 MB	768 MB	768 MB	1 GB	1 GB					16 MB
<b>Standard software bundles</b>	TWAIN / ISIS driver																						
	Fujitsu GUI application ScandAllPro																						
	Adobe® Acrobat® Standard					• <sup>9</sup>																	
	Adobe® Acrobat® Professional					• <sup>9</sup>																	
	ABBYY® FineReader OCR solution																						
	ScanSnap Manager		•	•	•																		
	CardMinder for PC / Cardiris for Mac		•	•	•																		
	VRS Professional Software																						
<b>Hardware pre-installed</b>	VRS Professional supported by CGA hardware																						
<b>Options</b>	Soft IPC V2.5																						
	Pre-/Post-Imprinter									Post		Post		Post		Post							
	Network connectable via fi-5000N																						
<b>Image Processing Module (IPC-4D), Video Interface, Memory Compression Module (JPG)</b>																							
<b>Recommended paper weight</b>			52-209 g/m <sup>2</sup>	64-107 g/m <sup>2</sup>	52-127 g/m <sup>2</sup>	52-127 g/m <sup>2</sup>	52-127 g/m <sup>2</sup>	52-127 g/m <sup>2</sup>	41-209 g/m <sup>2</sup>	41-209 g/m <sup>2</sup>	41-209 g/m <sup>2</sup>	41-209 g/m <sup>2</sup>	52-127 g/m <sup>2</sup>	31-209 g/m <sup>2</sup>	31-209 g/m <sup>2</sup>	31-209 g/m <sup>2</sup>	20-209 g/m <sup>2</sup>	31-209 g/m <sup>2</sup>	31-209 g/m <sup>2</sup>	20-209 g/m <sup>2</sup>	31-209 g/m <sup>2</sup>		52-127 g/m <sup>2</sup>
<b>Power consumption</b>	220 V - 240 V ± 10% 50/60 Hz (VA)		<2.5 <sup>10</sup>	<9	<35	<50	<24	<28	<38	<38	<42	<42	<57	<216	<216	<216	<200	<250	<8	<88			
<b>ENERGY STAR® / Power consumption in energy save mode</b>			• /<0.5	• /<3.2	• /<3.5	• /5	• /<6	• /<6	• /<6.2	• /<6.2	• /<6.2	• /<6.2	• /<7.5	• /<6	• /<6	• /<6	• /7	• /7	• /2	• /<10			
<b>Noise level (dBA)</b>	Sound Pressure Level		<50	<50	<50	<50	<58	<50	<50	<50	<50	<50	<50	<53	<53	<53	<55	<55	<45	<50			
	Sound Power Level		<6.2	<6.2	<6.5	<6.5	<7.2	<6.5	<6.2	<6.2	<6.2	<6.2	<6.5										
<b>Weight (kg)</b>			350g	1.4	3.0	6	5.5	3	4.2	8.8	4.2	8.8	8.5	35	17	35	32	50	0.9	13			
<b>Dimensions</b>	Height (mm)		34	77	158	172	179	130	158	229	158	229	193	342	300	342	345	500	40	281			
	Width (mm)		273	284	292	300	445	292	301	301	301	301	399	690	614	690	460	540	145	315			
	Depth (mm)		47.5	99	159	226	332	143	160	567	160	567	255	500	432	500	430	540	234	415			
<b>Typical daily throughput <sup>7</sup></b>	Min.					400	100	400	800	800	1200	1200	1000	3000	15,000	15,000	20,000	60,000	100	500			
	Max.		50	80	250	2000	250	2000	4000	4000	6000	6000	5000	8000	45,000	45,000	60,000	100,000	400	2000			

<sup>1</sup> colour scanning speed at 150 dpi.  
<sup>2</sup> b/w and colour only.  
<sup>3</sup> ADF front side only.  
<sup>4</sup> A3 Scanning possible with use of bundled carrier sheet.  
<sup>5</sup> these scanning speeds are halved when the unit is being operated by bus-powered.  
<sup>6</sup> at 300 dpi.

<sup>7</sup> For fi-series scanners, the maximum referenced value represents a peak volume to which the respective scanner is specified. In case this peak volume is used as regular daily volume, the scanners MTBF will be reduced. For ScanSnap this volume can be doubled.

<sup>8</sup> S1500M only.  
<sup>9</sup> S1500 only.  
<sup>10</sup> Powered from USB.

© PFU Imaging Solutions Europe Limited, 09/2011.  
 All names, manufacturer names, brand and product designations are subject to special trademark rights and are manufacturer's trademarks and/or registered brands of their respective owners. All indications are non-binding. Technical data is subject to change without prior notification.

**Rack2-Filer**  
 ScanSnap S1100, S1300 and S1500 also available as Deluxe versions bundled with Rack2-Filer V5.0