




# Identification Systems



	<b>Page</b>
<b>5.1 Pre/Post Termination Cable Markers</b>	<b>258</b>
<b>5.2 Post Termination Cable Markers</b>	<b>290</b>
<b>5.3 Labels</b>	<b>302</b>
Flowchart for Labels and Identification Material	304
Technical Details for Adhesive Labels	306
Materials and Applications	308
Technical Information on Self Laminating Labels	311
Overview of Sizes for Helatag Self-Laminating Labels for Dot Matrix Printers	342
Overview of Sizes for Helatag Plain Labels for Laser Printers	349
Overview of Sizes for Helatag Self-Laminating Labels for Thermal Transfer Printers	352
<b>5.4 Thermal Identification Printing Systems</b>	<b>356</b>
Overview of Thermal Identification Printing Systems	358
Technical Information on Thermal Transfer Films	359
Technical Information on Thermal Transfer Printing	368
Overview of Spirit Labels and Ribbons	372
Technical Information on Spirit and Durattach (DTH) Labels and Ribbons	374





	<b>Page</b>
<b>Helagrip</b>	<b>260</b>
<b>Helagrip Kits</b>	<b>263</b>
<b>Ovalgrip Straight Cut</b>	<b>264</b>
<b>AD Empty Applicators</b>	<b>266</b>
<b>AD Preloaded Applicators</b>	<b>266</b>
<b>PU/P Thin Wall PVC Markers</b>	<b>267</b>
<b>Polychloroprene Markers H</b>	<b>278</b>
<b>PVC Nitrile Markers NT</b>	<b>280</b>
<b>Silicone Markers SLP</b>	<b>282</b>
<b>Embossed Polychloroprene Markers</b>	<b>284</b>

### Helagrip

#### Features and Benefits

Helagrip is a versatile and cost effective cable identification system. The specially designed internal profile allows one size of marker to be fitted onto a wide range of cable diameters. Helagrip's chevron cut ensures that the markers lock together, enabling the text legend to stay in place where cable movement or vibration is likely. The flexible material ensures that Helagrip cable markers always fit securely onto the wire.

#### Application

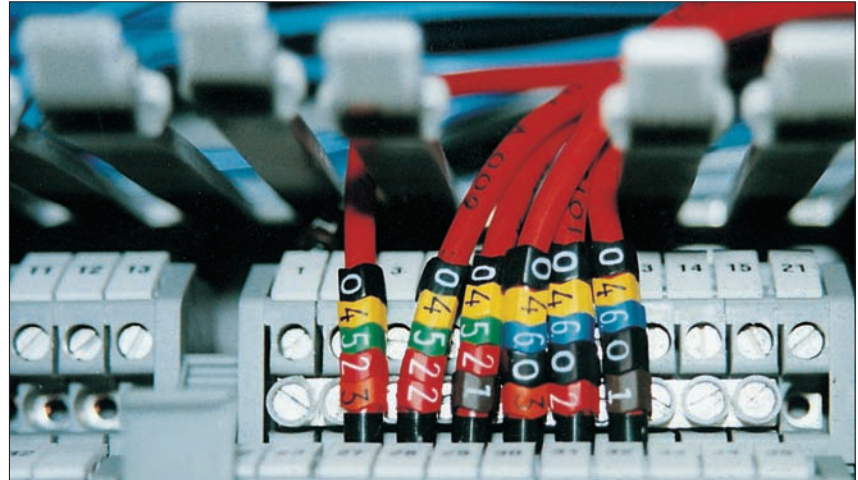
Ideally suited to panel building, mass transit, utilities, telecommunications and electrical contracting.

Helagrip is supplied on a reel (HGDC) for ease of use.

Markers are available as standard in international resistor colour code and yellow material marked in black. White material marked in black is available to special order.

Characters are 0-9, A-Z and standard electrical symbols.

For smaller cables and wires it is recommended that you use the AD applicator or the TJC installation tool.



Clearly a better way to identify in confined spaces.

Material Data		
RoHS	Material	Flexible Polyvinyl Chloride, cadmium free (PVC)
	Colour	White, yellow, international resistor colour code
	Flammability	Self extinguishing
	Operating Temperature	-65 °C to +105 °C, Intermittent +135 °C
	Specification	BS 2782-540B, BS 6746C, UL224, IEC 684-3-116

Technical Table



Type	Quantity per Reel	Outside Ø min.	Outside Ø max.	Length (L)	Application Tool
HGDC1-3	1000	1.0	3.0	3.5	AD1, TJC1-3
HGDC2-5	1000	2.0	5.0	3.5	AD2, TJC2-5
HGDC4-9	250	4.0	9.0	5.0	AD3, TJC4-9

All Dimensions in mm. Subject to technical changes.



Helagrip chevron cut.



Please Note for Product Specific Approvals please refer to Chapter 7.3



HGDC1-3 colour code

	Article-No.	Type
	515-01600	HGDC1-3
	515-01611	HGDC1-3
	515-01622	HGDC1-3
	515-01633	HGDC1-3
	515-01644	HGDC1-3
	515-01655	HGDC1-3
	515-01666	HGDC1-3
	515-01677	HGDC1-3
	515-01688	HGDC1-3
	515-01699	HGDC1-3



HGDC2-5 colour code

	Article-No.	Type
	515-02600	HGDC2-5
	515-02611	HGDC2-5
	515-02622	HGDC2-5
	515-02633	HGDC2-5
	515-02644	HGDC2-5
	515-02655	HGDC2-5
	515-02666	HGDC2-5
	515-02677	HGDC2-5
	515-02688	HGDC2-5
	515-02699	HGDC2-5



HGDC1-3 yellow

	Article-No.	Type
	515-01014	HGDC1-3
	515-01024	HGDC1-3
	515-01034	HGDC1-3
	515-01044	HGDC1-3
	515-01054	HGDC1-3
	515-01064	HGDC1-3
	515-01074	HGDC1-3
	515-01084	HGDC1-3
	515-01094	HGDC1-3
	515-01104	HGDC1-3
	515-01114	HGDC1-3
	515-01124	HGDC1-3
	515-01134	HGDC1-3
	515-01144	HGDC1-3
	515-01154	HGDC1-3
	515-01164	HGDC1-3
	515-01174	HGDC1-3
	515-01184	HGDC1-3
	515-01194	HGDC1-3
	515-01204	HGDC1-3
	515-01214	HGDC1-3
	515-01224	HGDC1-3
	515-01234	HGDC1-3
	515-01244	HGDC1-3
	515-01254	HGDC1-3
	515-01264	HGDC1-3
	515-01704	HGDC1-3
	515-01714	HGDC1-3
	515-01724	HGDC1-3
	515-01734	HGDC1-3
	515-01804	HGDC1-3
	515-01604	HGDC1-3
	515-01614	HGDC1-3
	515-01624	HGDC1-3
	515-01634	HGDC1-3
	515-01644	HGDC1-3
	515-01654	HGDC1-3
	515-01664	HGDC1-3
	515-01674	HGDC1-3
	515-01684	HGDC1-3
	515-01694	HGDC1-3



HGDC2-5 yellow

	Article-No.	Type
	515-02014	HGDC2-5
	515-02024	HGDC2-5
	515-02034	HGDC2-5
	515-02044	HGDC2-5
	515-02054	HGDC2-5
	515-02064	HGDC2-5
	515-02074	HGDC2-5
	515-02084	HGDC2-5
	515-02094	HGDC2-5
	515-02104	HGDC2-5
	515-02114	HGDC2-5
	515-02124	HGDC2-5
	515-02134	HGDC2-5
	515-02144	HGDC2-5
	515-02154	HGDC2-5
	515-02164	HGDC2-5
	515-02174	HGDC2-5
	515-02184	HGDC2-5
	515-02194	HGDC2-5
	515-02204	HGDC2-5
	515-02214	HGDC2-5
	515-02224	HGDC2-5
	515-02234	HGDC2-5
	515-02244	HGDC2-5
	515-02254	HGDC2-5
	515-02264	HGDC2-5
	515-02704	HGDC2-5
	515-02714	HGDC2-5
	515-02724	HGDC2-5
	515-02734	HGDC2-5
	515-02715	HGDC2-5
	515-02604	HGDC2-5
	515-02614	HGDC2-5
	515-02624	HGDC2-5
	515-02634	HGDC2-5
	515-02644	HGDC2-5
	515-02654	HGDC2-5
	515-02664	HGDC2-5
	515-02674	HGDC2-5
	515-02684	HGDC2-5
	515-02694	HGDC2-5

HGDC4-9 colour code



	Article-No.	Type
<b>0</b>	515-03600	HGDC4-9
<b>1</b>	515-03611	HGDC4-9
<b>2</b>	515-03622	HGDC4-9
<b>3</b>	515-03633	HGDC4-9
<b>4</b>	515-03644	HGDC4-9
<b>5</b>	515-03655	HGDC4-9
<b>6</b>	515-03666	HGDC4-9
<b>7</b>	515-03677	HGDC4-9
<b>8</b>	515-03688	HGDC4-9
<b>9</b>	515-03699	HGDC4-9

HGDC4-9 yellow



	Article-No.	Type
<b>A</b>	515-03014	HGDC4-9
<b>B</b>	515-03024	HGDC4-9
<b>C</b>	515-03034	HGDC4-9
<b>D</b>	515-03044	HGDC4-9
<b>E</b>	515-03054	HGDC4-9
<b>F</b>	515-03064	HGDC4-9
<b>G</b>	515-03074	HGDC4-9
<b>H</b>	515-03084	HGDC4-9
<b>I</b>	515-03094	HGDC4-9
<b>J</b>	515-03104	HGDC4-9
<b>K</b>	515-03114	HGDC4-9
<b>L</b>	515-03124	HGDC4-9
<b>M</b>	515-03134	HGDC4-9
<b>N</b>	515-03144	HGDC4-9
<b>O</b>	515-03154	HGDC4-9
<b>P</b>	515-03164	HGDC4-9
<b>Q</b>	515-03174	HGDC4-9
<b>R</b>	515-03184	HGDC4-9
<b>S</b>	515-03194	HGDC4-9
<b>T</b>	515-03204	HGDC4-9
<b>U</b>	515-03214	HGDC4-9
<b>V</b>	515-03224	HGDC4-9
<b>W</b>	515-03234	HGDC4-9
<b>X</b>	515-03244	HGDC4-9
<b>Y</b>	515-03254	HGDC4-9
<b>Z</b>	515-03264	HGDC4-9
<b>+</b>	515-03704	HGDC4-9
<b>-</b>	515-03714	HGDC4-9
<b>/</b>	515-03724	HGDC4-9
<b>&gt;</b>	515-01947	HGDC4-9
<b>&lt;</b>	515-01946	HGDC4-9
<b>0</b>	515-03604	HGDC4-9
<b>1</b>	515-03614	HGDC4-9
<b>2</b>	515-03624	HGDC4-9
<b>3</b>	515-03634	HGDC4-9
<b>4</b>	515-03644	HGDC4-9
<b>5</b>	515-03654	HGDC4-9
<b>6</b>	515-03664	HGDC4-9
<b>7</b>	515-03674	HGDC4-9
<b>8</b>	515-03684	HGDC4-9
<b>9</b>	515-03694	HGDC4-9

Specifications please see table page 421 in Appendix.

### Helagrip Kits

This handy kit has all the required characters for most applications. The set is divided into compartments containing strips of semi-severed markers.

This practical box contains 250 items each of the 18 most common identification symbols in handy strips. The strips can also be used to refill Helagrip cassettes.

**Content**

0-9 in the international resistor colour code; white material printed in black for L, N, R, S, T, +, -, EARTH.



Helagrip Kit (above left), loaded cassette (below left), AD pre-loaded applicators (below right).



### Helagrip cassettes

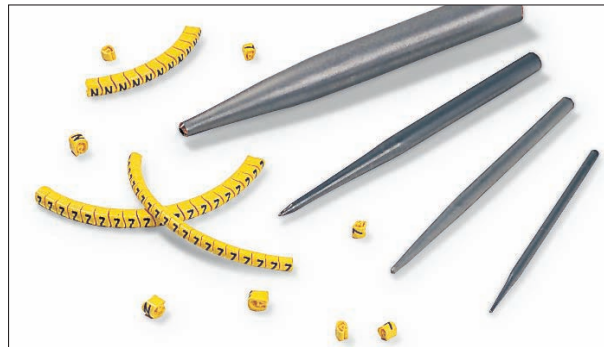
A handy pocket sized cassette containing 25 markers of each of the most popular characters and symbols and a PTFE coated metal applicator tool. Ideally suited for on-site installation, services and repair.

**Content**

HGCC1-3: 50 each of markers 0 to 3 and 25 markers size 4 to 9 in the international resistor colour code; 25 each of A, E, L, N, R, S, T, +, - and EARTH in white; PTFE-coated applicator tool TJC.

HGCC2-5: 25 each of markers 0 to 9 in the international resistor colour code; A, E, L, N, R, S, T, +, - and EARTH in white; PTFE-coated TJC applicator tool. Individual sets available as an option.

The refill pack for the cassette contains one basic set without TJC applicator tool.



TJC applicator tools.



### TJC Helagrip applicator tool

The PTFE coated metal applicator tool TJC makes it easier to load Helagrip onto wire.

Technical Table

Article-No.	Type	Outside Ø min.	Outside Ø max.	Pack Cont.	Application Tool
Helagrip Kits					
518-05013	Helagrip Set 1-3	1.3	2.8	1	AD1, TJC1-3
518-05025	Helagrip Set 2-5	2.25	5.0	1	AD2, TJC2-5
Helagrip cassettes					
518-06013	HGCC1-3	1.0	3.0	1	AD1, TJC1-3
518-06113	HGCC1-3 Refill Pack	1.0	3.0	1	AD1, TJC1-3
518-06025	HGCC2-5	2.0	5.0	1	AD2, TJC2-5
518-06125	HGCC2-5 Refill Pack	2.0	5.0	1	AD2, TJC2-5
Helagrip Applicator Tool TJC					
518-00113	TJC1-3	1.3	2.8	1	
518-00125	TJC2-5	2.25	5.0	1	
518-00137	TJC3-7	3.0	7.0	1	
518-00149	TJC4-9	4.0	9.0	1	

All Dimensions in mm. Subject to technical changes.



### Ovalgrip Straight Cut

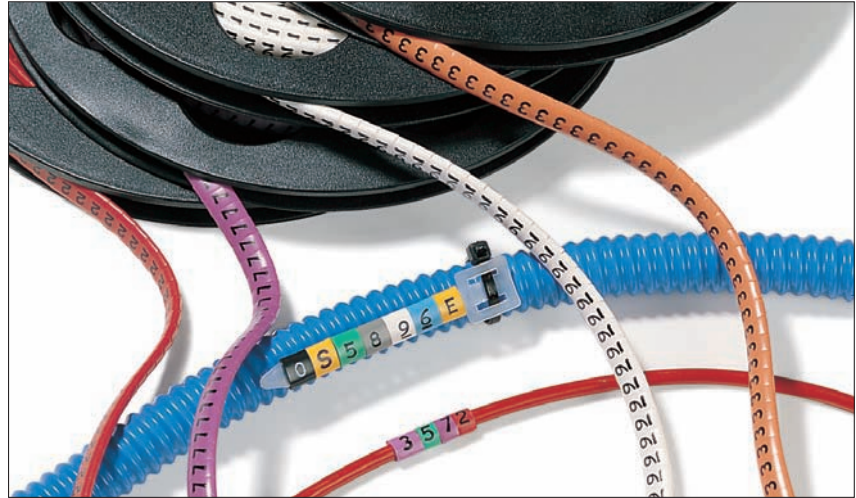
#### Features and Benefits

Ovalgrip markers have been specifically designed to mark cable and wire both before and after termination. Their oval shape means that these markers are easy to fit by hand directly onto the cable pre termination or they can be attached as an identification flag post termination using special marker Arrowtags. Arrowtags fitted with Ovalgrip are fastened using cable ties and can very easily be modified or removed without the need to uninstall the cable.

Sizes 50 and 85 can be used with Arrowtags for identifying larger cable bundles.

#### Application

Ideally suited to panel building, mass transit, utilities, telecommunications and electrical contracting. These markers are supplied continuous on a reel (HODS). Markers are available as a standard in yellow material marked in black and international resistor colour code. Characters are 0-9, A-Z and standard electrical symbols. White material marked in black available on special request. AT1 Arrowtags will fit 7 size 50 markers. AT2 Arrowtags will fit 8 size 85 markers. AT3 Arrowtags will fit 14 size 85 markers.



A simple idea for complex marking needs.

Technical Table



Type	Quantity per Reel	Outside Ø min.	Outside Ø max.	Length (L)	Recommended Carrier
HODS50*	1000	1.7	3.6	4.0	AT1
HODS85*	1000	1.8	6.3	4.5	AT2/AT3

All Dimensions in mm. Subject to technical changes.

\* Marking text 0-9 as international resistor code, as well as A-Z, 0-9 and special characters in yellow.

Technical Table

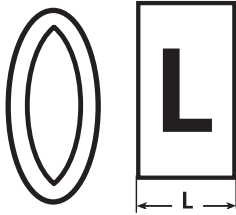
Article-No.	Type	Quantity per Reel	Outside Ø min.	Outside Ø max.	Length (L)	Recommended Carrier
531-00253	H085 KIT	18x125	1.8	6.3	4.5	AT2/AT3

All Dimensions in mm. Subject to technical changes.

**For details on Arrowtags please see page 295.**

Material Data

<b>RoHS</b>	Material	<b>Flexible Polyvinyl Chloride, cadmium free (PVC)</b>
	Colour	<b>White, yellow, international resistor colour code</b>
	Operating Temperature	<b>-65 °C to +105 °C, Intermittent +135 °C</b>
	Flammability	<b>Self extinguishing</b>
	Specification	<b>BS 2782-540B, BS 6746C, UL224, IEC 304, IEC 757</b>



Ovalgrip straight cut.

Pre/Post Termination Cable Markers



HODS50 colour code

	Article-No.	Type
<b>0</b>	531-15365	HODS50
<b>1</b>	531-15366	HODS50
<b>2</b>	531-15367	HODS50
<b>3</b>	531-15368	HODS50
<b>4</b>	531-15314	HODS50
<b>5</b>	531-15370	HODS50
<b>6</b>	531-15371	HODS50
<b>7</b>	531-15372	HODS50
<b>8</b>	531-15373	HODS50
<b>9</b>	531-15374	HODS50



HODS85 colour code

	Article-No.	Type
<b>0</b>	531-07728	HODS85
<b>1</b>	531-07729	HODS85
<b>2</b>	531-07730	HODS85
<b>3</b>	531-07731	HODS85
<b>4</b>	531-07732	HODS85
<b>5</b>	531-07733	HODS85
<b>6</b>	531-07734	HODS85
<b>7</b>	531-07735	HODS85
<b>8</b>	531-07736	HODS85
<b>9</b>	531-07824	HODS85



HODS50 yellow

	Article-No.	Type
<b>A</b>	531-15014	HODS50
<b>B</b>	531-15024	HODS50
<b>C</b>	531-15034	HODS50
<b>D</b>	531-15044	HODS50
<b>E</b>	531-15054	HODS50
<b>F</b>	531-15064	HODS50
<b>G</b>	531-15074	HODS50
<b>H</b>	531-15084	HODS50
<b>I</b>	531-15094	HODS50
<b>J</b>	531-15104	HODS50
<b>K</b>	531-15114	HODS50
<b>L</b>	531-15124	HODS50
<b>M</b>	531-15134	HODS50
<b>N</b>	531-15144	HODS50
<b>O</b>	531-15154	HODS50
<b>P</b>	531-15164	HODS50
<b>Q</b>	531-15174	HODS50
<b>R</b>	531-15184	HODS50
<b>S</b>	531-15194	HODS50
<b>T</b>	531-15204	HODS50
<b>U</b>	531-15214	HODS50
<b>V</b>	531-15224	HODS50
<b>W</b>	531-15234	HODS50
<b>X</b>	531-15244	HODS50
<b>Y</b>	531-15254	HODS50
<b>Z</b>	531-15264	HODS50
<b>+</b>	531-00451	HODS50
<b>-</b>	531-00452	HODS50
<b>/</b>	531-00175	HODS50
<b>±</b>	531-00176	HODS50
<b>.</b>	531-00174	HODS50
<b>0</b>	531-15274	HODS50
<b>1</b>	531-15284	HODS50
<b>2</b>	531-15294	HODS50
<b>3</b>	531-15304	HODS50
<b>4</b>	531-15314	HODS50
<b>5</b>	531-15324	HODS50
<b>6</b>	531-15334	HODS50
<b>7</b>	531-15344	HODS50
<b>8</b>	531-15354	HODS50
<b>9</b>	531-15364	HODS50



HODS85 yellow

	Article-No.	Type
<b>A</b>	531-07935	HODS85
<b>B</b>	531-07936	HODS85
<b>C</b>	531-07937	HODS85
<b>D</b>	531-07938	HODS85
<b>E</b>	531-07939	HODS85
<b>F</b>	531-07940	HODS85
<b>G</b>	531-07941	HODS85
<b>H</b>	531-07942	HODS85
<b>I</b>	531-07943	HODS85
<b>J</b>	531-07944	HODS85
<b>K</b>	531-07945	HODS85
<b>L</b>	531-07946	HODS85
<b>M</b>	531-07947	HODS85
<b>N</b>	531-07948	HODS85
<b>O</b>	531-07949	HODS85
<b>P</b>	531-07950	HODS85
<b>Q</b>	531-07951	HODS85
<b>R</b>	531-07952	HODS85
<b>S</b>	531-07953	HODS85
<b>T</b>	531-07954	HODS85
<b>U</b>	531-07955	HODS85
<b>V</b>	531-07956	HODS85
<b>W</b>	531-07957	HODS85
<b>X</b>	531-07958	HODS85
<b>Y</b>	531-07959	HODS85
<b>Z</b>	531-07960	HODS85
<b>+</b>	531-07924	HODS85
<b>-</b>	531-07923	HODS85
<b>/</b>	531-07961	HODS85
<b>±</b>	531-00386	HODS85
<b>.</b>	531-00384	HODS85
<b>0</b>	531-07925	HODS85
<b>1</b>	531-07926	HODS85
<b>2</b>	531-07927	HODS85
<b>3</b>	531-07928	HODS85
<b>4</b>	531-07732	HODS85
<b>5</b>	531-07930	HODS85
<b>6</b>	531-07931	HODS85
<b>7</b>	531-07932	HODS85
<b>8</b>	531-07933	HODS85
<b>9</b>	531-07934	HODS85

### AD Empty Applicators

The applicator tools AD make it easier to fit Helagrip markers. This is done by expanding the profile of the marker which can then easily be drawn onto the wire or cable to be marked.

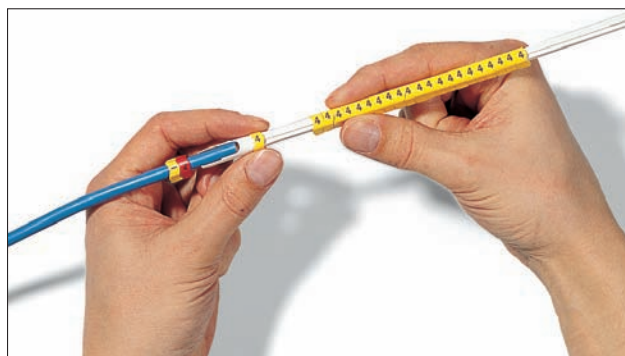
The AD applicator tools are made from PA66 and come in 3 sizes.

### AD Pre-loaded Applicators

The pre-loaded applicator tools contain 25 markers each of one character.

#### Content

Marker range: 0–9, +, -,  $\frac{1}{2}$  in yellow.



AD applicators; clearly a faster way of working, reducing production time.



Individually pre-loaded applicators are available on request.

Technical Table

	Article-No.	Outside Ø min.	Outside Ø max.	Marker tiles per carrier	Pack Cont.	For Size
AD2, Pre-loaded with HG2-5						
	0	518-02604	2.0	5.0	25	50
	1	518-02614	2.0			
	2	518-02624	2.0			
	3	518-02634	2.0			
	4	518-02644	2.0			
	5	518-02654	2.0			
	6	518-02664	2.0			
	7	518-02674	2.0			
	8	518-02684	2.0			
	9	518-02694	2.0			
	+	518-02704	2.0			
	-	518-02714	2.0			
	$\frac{1}{2}$	518-02734	2.0			
AD3 Pre-loaded with HG4-9						
	0	518-03604	4.0	9.0	25	50
	1	518-03614	4.0			
	2	518-03624	4.0			
	3	518-03634	4.0			
	4	518-03644	4.0			
	5	518-03654	4.0			
	6	518-03664	4.0			
	7	518-03674	4.0			
	8	518-03684	4.0			
	9	518-03694	4.0			
	+	518-03704	4.0			
	-	518-03714	4.0			
	$\frac{1}{2}$	518-03734	4.0			
AD Empty Applicator Tools						
-	518-00013	1.0	3.0	-	100	HG1-3
-	518-00023	2.0	5.0	-	100	HG2-5
-	518-00033	4.0	9.0	-	100	HG4-9

All Dimensions in mm. Subject to technical changes.

### PU/P Thin Wall PVC Markers

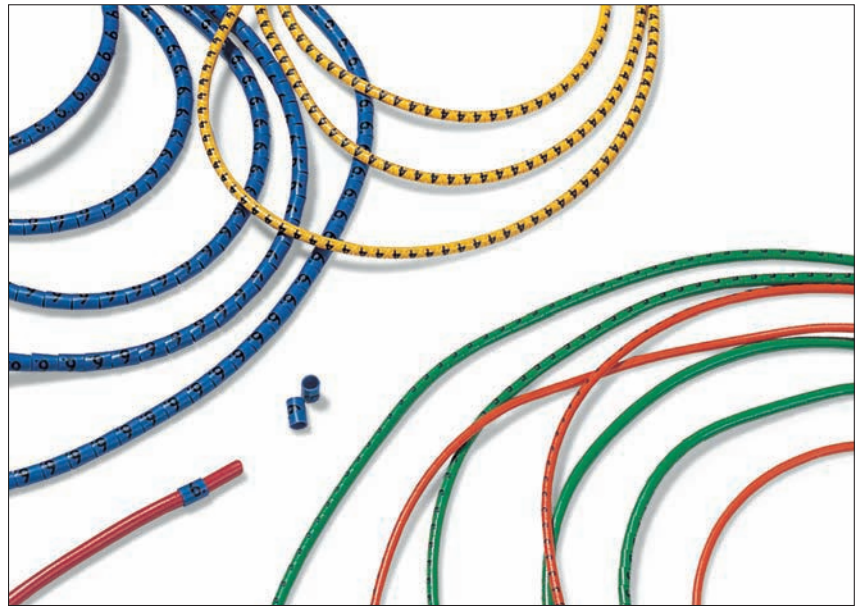
#### Features and Benefits

These high-grade light weight PVC markers have a thin wall that makes them ideal for identifying wires in areas where space is at a premium. The thin wall makes the markers light, very flexible and space effective thus making installation easier. P markers are supplied fully severed whereas PU markers are supplied in semi severed lengths.

Markers are available in yellow material marked in black and international resistor colour coding. Characters are 0-9, A-Z and standard electrical symbols.

#### Application

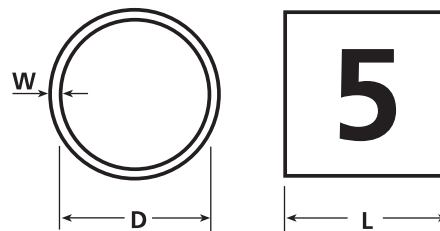
For close density wiring applications where the thin wall section takes up the minimum amount of space.



For areas where space and weight saving is required.

#### Material Data

Material	<b>Flexible Polyvinyl Chloride, cadmium free (PVC)</b>
Colour	<b>Yellow, international resistor colour code</b>
Flammability	<b>Self extinguishing</b>
Operating Temperature	<b>-65 °C to +105 °C, Intermittent +135 °C</b>
Specification	<b>UL224, BS 3858 Type 3, IEC 684-3-101 / 104</b>



#### Technical Table

Semi Severed	Fully Severed	Ø D	Wall (WT)	Length (L)	Application Tool
PU8 Marker	P8 Marker	0.8	0.35	3.0	-
PU10 Marker	P10 Marker	1.0	0.35	3.0	-
PU12 Marker	P12 Marker	1.2	0.35	3.0	-
PU15 Marker	P15 Marker	1.50	0.35	3.0	TJC00
PU20 Marker	P20 Marker	2.0	0.35	5.0	TJC1-3
PU25 Marker	P25 Marker	2.5	0.35	5.0	TJC1-3
PU30 Marker	P30 Marker	3.0	0.35	5.0	TJC1-3
PU40 Marker	P40 Marker	4.0	0.35	5.0	TJC2-5
PU55 Marker	P55 Marker	5.50	0.35	5.0	-

All Dimensions in mm. Subject to technical changes.



P8 fully severed colour code

	Article-No.	Type
<b>0</b>	604-00100	P8 Marker
<b>1</b>	604-00101	P8 Marker
<b>2</b>	604-00102	P8 Marker
<b>3</b>	604-00103	P8 Marker
<b>4</b>	604-00104	P8 Marker
<b>5</b>	604-00105	P8 Marker
<b>6</b>	604-00106	P8 Marker
<b>7</b>	604-00107	P8 Marker
<b>8</b>	604-00108	P8 Marker
<b>9</b>	604-00109	P8 Marker



P10 fully severed colour code

	Article-No.	Type
<b>0</b>	604-00202	P10 Marker
<b>1</b>	604-00203	P10 Marker
<b>2</b>	604-00204	P10 Marker
<b>3</b>	604-00205	P10 Marker
<b>4</b>	604-00206	P10 Marker
<b>5</b>	604-00207	P10 Marker
<b>6</b>	604-00208	P10 Marker
<b>7</b>	604-00209	P10 Marker
<b>8</b>	604-00210	P10 Marker
<b>9</b>	604-00211	P10 Marker



P8 fully severed yellow

	Article-No.	Type
<b>A</b>	604-00122	P8 Marker
<b>B</b>	604-00123	P8 Marker
<b>C</b>	604-00124	P8 Marker
<b>D</b>	604-00125	P8 Marker
<b>E</b>	604-00126	P8 Marker
<b>F</b>	604-00127	P8 Marker
<b>G</b>	604-00128	P8 Marker
<b>H</b>	604-00129	P8 Marker
<b>I</b>	604-00130	P8 Marker
<b>J</b>	604-00131	P8 Marker
<b>K</b>	604-00132	P8 Marker
<b>L</b>	604-00133	P8 Marker
<b>M</b>	604-00134	P8 Marker
<b>N</b>	604-00135	P8 Marker
<b>O</b>	604-00136	P8 Marker
<b>P</b>	604-00137	P8 Marker
<b>Q</b>	604-00138	P8 Marker
<b>R</b>	604-00139	P8 Marker
<b>S</b>	604-00140	P8 Marker
<b>T</b>	604-00141	P8 Marker
<b>U</b>	604-00142	P8 Marker
<b>V</b>	604-00143	P8 Marker
<b>W</b>	604-00144	P8 Marker
<b>X</b>	604-00145	P8 Marker
<b>Y</b>	604-00146	P8 Marker
<b>Z</b>	604-00147	P8 Marker
<b>+</b>	604-00151	P8 Marker
<b>-</b>	604-00152	P8 Marker
<b>/</b>	604-00153	P8 Marker
<b>±</b>	604-00154	P8 Marker
<b>0</b>	604-00113	P8 Marker
<b>1</b>	604-00114	P8 Marker
<b>2</b>	604-00115	P8 Marker
<b>3</b>	604-00116	P8 Marker
<b>4</b>	604-00104	P8 Marker
<b>5</b>	604-00117	P8 Marker
<b>6</b>	604-00118	P8 Marker
<b>7</b>	604-00119	P8 Marker
<b>8</b>	604-00120	P8 Marker
<b>9</b>	604-00121	P8 Marker



P10 fully severed yellow

	Article-No.	Type
<b>A</b>	604-00240	P10 Marker
<b>B</b>	604-00241	P10 Marker
<b>C</b>	604-00242	P10 Marker
<b>D</b>	604-00243	P10 Marker
<b>E</b>	604-00244	P10 Marker
<b>F</b>	604-00245	P10 Marker
<b>G</b>	604-00246	P10 Marker
<b>H</b>	604-00247	P10 Marker
<b>I</b>	604-00248	P10 Marker
<b>J</b>	604-00249	P10 Marker
<b>K</b>	604-00250	P10 Marker
<b>L</b>	604-00251	P10 Marker
<b>M</b>	604-00252	P10 Marker
<b>N</b>	604-00253	P10 Marker
<b>O</b>	604-00254	P10 Marker
<b>P</b>	604-00255	P10 Marker
<b>Q</b>	604-00256	P10 Marker
<b>R</b>	604-00257	P10 Marker
<b>S</b>	604-00258	P10 Marker
<b>T</b>	604-00259	P10 Marker
<b>U</b>	604-00260	P10 Marker
<b>V</b>	604-00261	P10 Marker
<b>W</b>	604-00262	P10 Marker
<b>X</b>	604-00263	P10 Marker
<b>Y</b>	604-00264	P10 Marker
<b>Z</b>	604-00265	P10 Marker
<b>+</b>	604-00266	P10 Marker
<b>-</b>	604-00267	P10 Marker
<b>/</b>	604-00268	P10 Marker
<b>±</b>	604-00269	P10 Marker
<b>0</b>	604-00231	P10 Marker
<b>1</b>	604-00232	P10 Marker
<b>2</b>	604-00233	P10 Marker
<b>3</b>	604-00234	P10 Marker
<b>4</b>	604-00206	P10 Marker
<b>5</b>	604-00235	P10 Marker
<b>6</b>	604-00236	P10 Marker
<b>7</b>	604-00237	P10 Marker
<b>8</b>	604-00238	P10 Marker
<b>9</b>	604-00239	P10 Marker



P12 fully severed colour code

	Article-No.	Type
<b>0</b>	604-00300	P12 Marker
<b>1</b>	604-00301	P12 Marker
<b>2</b>	604-00302	P12 Marker
<b>3</b>	604-00303	P12 Marker
<b>4</b>	604-00304	P12 Marker
<b>5</b>	604-00305	P12 Marker
<b>6</b>	604-00306	P12 Marker
<b>7</b>	604-00307	P12 Marker
<b>8</b>	604-00308	P12 Marker
<b>9</b>	604-00309	P12 Marker



P15 fully severed colour code

	Article-No.	Type
<b>0</b>	604-00402	P15 Marker
<b>1</b>	604-00403	P15 Marker
<b>2</b>	604-00404	P15 Marker
<b>3</b>	604-00405	P15 Marker
<b>4</b>	604-00406	P15 Marker
<b>5</b>	604-00407	P15 Marker
<b>6</b>	604-00408	P15 Marker
<b>7</b>	604-00409	P15 Marker
<b>8</b>	604-00410	P15 Marker
<b>9</b>	604-00411	P15 Marker



P12 fully severed yellow

	Article-No.	Type
<b>A</b>	604-00321	P12 Marker
<b>B</b>	604-00322	P12 Marker
<b>C</b>	604-00323	P12 Marker
<b>D</b>	604-00324	P12 Marker
<b>E</b>	604-00325	P12 Marker
<b>F</b>	604-00326	P12 Marker
<b>G</b>	604-00327	P12 Marker
<b>H</b>	604-00328	P12 Marker
<b>I</b>	604-00329	P12 Marker
<b>J</b>	604-00330	P12 Marker
<b>K</b>	604-00331	P12 Marker
<b>L</b>	604-00332	P12 Marker
<b>M</b>	604-00333	P12 Marker
<b>N</b>	604-00334	P12 Marker
<b>O</b>	604-00335	P12 Marker
<b>P</b>	604-00336	P12 Marker
<b>Q</b>	604-00337	P12 Marker
<b>R</b>	604-00338	P12 Marker
<b>S</b>	604-00339	P12 Marker
<b>T</b>	604-00340	P12 Marker
<b>U</b>	604-00341	P12 Marker
<b>V</b>	604-00342	P12 Marker
<b>W</b>	604-00343	P12 Marker
<b>X</b>	604-00344	P12 Marker
<b>Y</b>	604-00345	P12 Marker
<b>Z</b>	604-00346	P12 Marker
<b>+</b>	604-00349	P12 Marker
<b>-</b>	604-00350	P12 Marker
<b>/</b>	604-00351	P12 Marker
<b>±</b>	604-00352	P12 Marker
<b>0</b>	604-00312	P12 Marker
<b>1</b>	604-00313	P12 Marker
<b>2</b>	604-00314	P12 Marker
<b>3</b>	604-00315	P12 Marker
<b>4</b>	604-00304	P12 Marker
<b>5</b>	604-00316	P12 Marker
<b>6</b>	604-00317	P12 Marker
<b>7</b>	604-00318	P12 Marker
<b>8</b>	604-00319	P12 Marker
<b>9</b>	604-00320	P12 Marker



P15 fully severed yellow

	Article-No.	Type
<b>A</b>	604-00424	P15 Marker
<b>B</b>	604-00425	P15 Marker
<b>C</b>	604-00426	P15 Marker
<b>D</b>	604-00427	P15 Marker
<b>E</b>	604-00428	P15 Marker
<b>F</b>	604-00429	P15 Marker
<b>G</b>	604-00430	P15 Marker
<b>H</b>	604-00431	P15 Marker
<b>I</b>	604-00432	P15 Marker
<b>J</b>	604-00433	P15 Marker
<b>K</b>	604-00434	P15 Marker
<b>L</b>	604-00435	P15 Marker
<b>M</b>	604-00436	P15 Marker
<b>N</b>	604-00437	P15 Marker
<b>O</b>	604-00438	P15 Marker
<b>P</b>	604-00439	P15 Marker
<b>Q</b>	604-00440	P15 Marker
<b>R</b>	604-00441	P15 Marker
<b>S</b>	604-00442	P15 Marker
<b>T</b>	604-00443	P15 Marker
<b>U</b>	604-00444	P15 Marker
<b>V</b>	604-00445	P15 Marker
<b>W</b>	604-00446	P15 Marker
<b>X</b>	604-00447	P15 Marker
<b>Y</b>	604-00448	P15 Marker
<b>Z</b>	604-00449	P15 Marker
<b>+</b>	604-00479	P15 Marker
<b>-</b>	604-00480	P15 Marker
<b>/</b>	604-00481	P15 Marker
<b>±</b>	604-00482	P15 Marker
<b>0</b>	604-00415	P15 Marker
<b>1</b>	604-00416	P15 Marker
<b>2</b>	604-00417	P15 Marker
<b>3</b>	604-00418	P15 Marker
<b>4</b>	604-00406	P15 Marker
<b>5</b>	604-00419	P15 Marker
<b>6</b>	604-00420	P15 Marker
<b>7</b>	604-00421	P15 Marker
<b>8</b>	604-00422	P15 Marker
<b>9</b>	604-00423	P15 Marker



P20 fully severed colour code

	Article-No.	Type
<b>0</b>	604-00547	P20 Marker
<b>1</b>	604-00548	P20 Marker
<b>2</b>	604-00549	P20 Marker
<b>3</b>	604-00550	P20 Marker
<b>4</b>	604-00551	P20 Marker
<b>5</b>	604-00552	P20 Marker
<b>6</b>	604-00553	P20 Marker
<b>7</b>	604-00554	P20 Marker
<b>8</b>	604-00555	P20 Marker
<b>9</b>	604-00556	P20 Marker



P25 fully severed colour code

	Article-No.	Type
<b>0</b>	604-00610	P25 Marker
<b>1</b>	604-00611	P25 Marker
<b>2</b>	604-00612	P25 Marker
<b>3</b>	604-00613	P25 Marker
<b>4</b>	604-00614	P25 Marker
<b>5</b>	604-00615	P25 Marker
<b>6</b>	604-00616	P25 Marker
<b>7</b>	604-00617	P25 Marker
<b>8</b>	604-00618	P25 Marker
<b>9</b>	604-00619	P25 Marker



P20 fully severed yellow

	Article-No.	Type
<b>A</b>	604-00569	P20 Marker
<b>B</b>	604-00570	P20 Marker
<b>C</b>	604-00571	P20 Marker
<b>D</b>	604-00572	P20 Marker
<b>E</b>	604-00573	P20 Marker
<b>F</b>	604-00574	P20 Marker
<b>G</b>	604-00575	P20 Marker
<b>H</b>	604-00576	P20 Marker
<b>I</b>	604-00577	P20 Marker
<b>J</b>	604-00578	P20 Marker
<b>K</b>	604-00579	P20 Marker
<b>L</b>	604-00580	P20 Marker
<b>M</b>	604-00581	P20 Marker
<b>N</b>	604-00582	P20 Marker
<b>O</b>	604-00583	P20 Marker
<b>P</b>	604-00584	P20 Marker
<b>Q</b>	604-00585	P20 Marker
<b>R</b>	604-00586	P20 Marker
<b>S</b>	604-00587	P20 Marker
<b>T</b>	604-00588	P20 Marker
<b>U</b>	604-00589	P20 Marker
<b>V</b>	604-00590	P20 Marker
<b>W</b>	604-00591	P20 Marker
<b>X</b>	604-00592	P20 Marker
<b>Y</b>	604-00593	P20 Marker
<b>Z</b>	604-00594	P20 Marker
<b>+</b>	604-00558	P20 Marker
<b>-</b>	604-00559	P20 Marker
<b>/</b>	604-10501	P20 Marker
<b>±</b>	604-10502	P20 Marker
<b>0</b>	604-00560	P20 Marker
<b>1</b>	604-00561	P20 Marker
<b>2</b>	604-00562	P20 Marker
<b>3</b>	604-00563	P20 Marker
<b>4</b>	604-00551	P20 Marker
<b>5</b>	604-00564	P20 Marker
<b>6</b>	604-00565	P20 Marker
<b>7</b>	604-00566	P20 Marker
<b>8</b>	604-00567	P20 Marker
<b>9</b>	604-00568	P20 Marker



P25 fully severed yellow

	Article-No.	Type
<b>A</b>	604-00634	P25 Marker
<b>B</b>	604-00635	P25 Marker
<b>C</b>	604-00636	P25 Marker
<b>D</b>	604-00637	P25 Marker
<b>E</b>	604-00638	P25 Marker
<b>F</b>	604-00639	P25 Marker
<b>G</b>	604-00640	P25 Marker
<b>H</b>	604-00641	P25 Marker
<b>I</b>	604-00642	P25 Marker
<b>J</b>	604-00643	P25 Marker
<b>K</b>	604-00644	P25 Marker
<b>L</b>	604-00645	P25 Marker
<b>M</b>	604-00646	P25 Marker
<b>N</b>	604-00647	P25 Marker
<b>O</b>	604-00648	P25 Marker
<b>P</b>	604-00649	P25 Marker
<b>Q</b>	604-00650	P25 Marker
<b>R</b>	604-00651	P25 Marker
<b>S</b>	604-00652	P25 Marker
<b>T</b>	604-00653	P25 Marker
<b>U</b>	604-00654	P25 Marker
<b>V</b>	604-00655	P25 Marker
<b>W</b>	604-00656	P25 Marker
<b>X</b>	604-00657	P25 Marker
<b>Y</b>	604-00658	P25 Marker
<b>Z</b>	604-00659	P25 Marker
<b>+</b>	604-00672	P25 Marker
<b>-</b>	604-00673	P25 Marker
<b>/</b>	604-00674	P25 Marker
<b>±</b>	604-00675	P25 Marker
<b>0</b>	604-00625	P25 Marker
<b>1</b>	604-00626	P25 Marker
<b>2</b>	604-00627	P25 Marker
<b>3</b>	604-00628	P25 Marker
<b>4</b>	604-00614	P25 Marker
<b>5</b>	604-00629	P25 Marker
<b>6</b>	604-00630	P25 Marker
<b>7</b>	604-00631	P25 Marker
<b>8</b>	604-00632	P25 Marker
<b>9</b>	604-00633	P25 Marker

P30 fully severed colour code



	Article-No.	Type
<b>0</b>	604-00715	P30 Marker
<b>1</b>	604-00716	P30 Marker
<b>2</b>	604-00717	P30 Marker
<b>3</b>	604-00718	P30 Marker
<b>4</b>	604-00719	P30 Marker
<b>5</b>	604-00720	P30 Marker
<b>6</b>	604-00721	P30 Marker
<b>7</b>	604-00722	P30 Marker
<b>8</b>	604-00723	P30 Marker
<b>9</b>	604-00724	P30 Marker



P40 fully severed colour code

	Article-No.	Type
<b>0</b>	604-00826	P40 Marker
<b>1</b>	604-00827	P40 Marker
<b>2</b>	604-00828	P40 Marker
<b>3</b>	604-00829	P40 Marker
<b>4</b>	604-00830	P40 Marker
<b>5</b>	604-00831	P40 Marker
<b>6</b>	604-00832	P40 Marker
<b>7</b>	604-00833	P40 Marker
<b>8</b>	604-00834	P40 Marker
<b>9</b>	604-00835	P40 Marker

P30 fully severed yellow



	Article-No.	Type
<b>A</b>	604-00746	P30 Marker
<b>B</b>	604-00747	P30 Marker
<b>C</b>	604-00748	P30 Marker
<b>D</b>	604-00749	P30 Marker
<b>E</b>	604-00750	P30 Marker
<b>F</b>	604-00751	P30 Marker
<b>G</b>	604-00752	P30 Marker
<b>H</b>	604-00753	P30 Marker
<b>I</b>	604-00754	P30 Marker
<b>J</b>	604-00755	P30 Marker
<b>K</b>	604-00756	P30 Marker
<b>L</b>	604-00757	P30 Marker
<b>M</b>	604-00758	P30 Marker
<b>N</b>	604-00759	P30 Marker
<b>O</b>	604-00760	P30 Marker
<b>P</b>	604-00761	P30 Marker
<b>Q</b>	604-00762	P30 Marker
<b>R</b>	604-00763	P30 Marker
<b>S</b>	604-00764	P30 Marker
<b>T</b>	604-00765	P30 Marker
<b>U</b>	604-00766	P30 Marker
<b>V</b>	604-00767	P30 Marker
<b>W</b>	604-00768	P30 Marker
<b>X</b>	604-00769	P30 Marker
<b>Y</b>	604-00770	P30 Marker
<b>Z</b>	604-00771	P30 Marker
<b>+</b>	604-00772	P30 Marker
<b>-</b>	604-00773	P30 Marker
<b>/</b>	604-00774	P30 Marker
<b>±</b>	604-00775	P30 Marker
<b>0</b>	604-00737	P30 Marker
<b>1</b>	604-00738	P30 Marker
<b>2</b>	604-00739	P30 Marker
<b>3</b>	604-00740	P30 Marker
<b>4</b>	604-00719	P30 Marker
<b>5</b>	604-00741	P30 Marker
<b>6</b>	604-00742	P30 Marker
<b>7</b>	604-00743	P30 Marker
<b>8</b>	604-00744	P30 Marker
<b>9</b>	604-00745	P30 Marker



P40 fully severed yellow

	Article-No.	Type
<b>A</b>	604-00848	P40 Marker
<b>B</b>	604-00849	P40 Marker
<b>C</b>	604-00850	P40 Marker
<b>D</b>	604-00851	P40 Marker
<b>E</b>	604-00852	P40 Marker
<b>F</b>	604-00853	P40 Marker
<b>G</b>	604-00854	P40 Marker
<b>H</b>	604-00855	P40 Marker
<b>I</b>	604-00856	P40 Marker
<b>J</b>	604-00857	P40 Marker
<b>K</b>	604-00858	P40 Marker
<b>L</b>	604-00859	P40 Marker
<b>M</b>	604-00860	P40 Marker
<b>N</b>	604-00861	P40 Marker
<b>O</b>	604-00862	P40 Marker
<b>P</b>	604-00863	P40 Marker
<b>Q</b>	604-00864	P40 Marker
<b>R</b>	604-00865	P40 Marker
<b>S</b>	604-00866	P40 Marker
<b>T</b>	604-00867	P40 Marker
<b>U</b>	604-00868	P40 Marker
<b>V</b>	604-00869	P40 Marker
<b>W</b>	604-00870	P40 Marker
<b>X</b>	604-00871	P40 Marker
<b>Y</b>	604-00872	P40 Marker
<b>Z</b>	604-00873	P40 Marker
<b>+</b>	604-10800	P40 Marker
<b>-</b>	604-10801	P40 Marker
<b>/</b>	604-10802	P40 Marker
<b>±</b>	604-10803	P40 Marker
<b>0</b>	604-00839	P40 Marker
<b>1</b>	604-00840	P40 Marker
<b>2</b>	604-00841	P40 Marker
<b>3</b>	604-00842	P40 Marker
<b>4</b>	604-00830	P40 Marker
<b>5</b>	604-00843	P40 Marker
<b>6</b>	604-00844	P40 Marker
<b>7</b>	604-00845	P40 Marker
<b>8</b>	604-00846	P40 Marker
<b>9</b>	604-00847	P40 Marker





P55 fully severed colour code

	Article-No.	Type
<b>0</b>	604-00907	P55 Marker
<b>1</b>	604-00908	P55 Marker
<b>2</b>	604-00909	P55 Marker
<b>3</b>	604-00910	P55 Marker
<b>4</b>	604-00911	P55 Marker
<b>5</b>	604-00912	P55 Marker
<b>6</b>	604-00913	P55 Marker
<b>7</b>	604-00914	P55 Marker
<b>8</b>	604-00915	P55 Marker
<b>9</b>	604-00916	P55 Marker



P55 fully severed yellow

	Article-No.	Type
<b>A</b>	604-00930	P55 Marker
<b>B</b>	604-00931	P55 Marker
<b>C</b>	604-00932	P55 Marker
<b>D</b>	604-00933	P55 Marker
<b>E</b>	604-00934	P55 Marker
<b>F</b>	604-00935	P55 Marker
<b>G</b>	604-00936	P55 Marker
<b>H</b>	604-00937	P55 Marker
<b>I</b>	604-00938	P55 Marker
<b>J</b>	604-00939	P55 Marker
<b>K</b>	604-00940	P55 Marker
<b>L</b>	604-00941	P55 Marker
<b>M</b>	604-00942	P55 Marker
<b>N</b>	604-00943	P55 Marker
<b>O</b>	604-00944	P55 Marker
<b>P</b>	604-00945	P55 Marker
<b>Q</b>	604-00946	P55 Marker
<b>R</b>	604-00947	P55 Marker
<b>S</b>	604-00948	P55 Marker
<b>T</b>	604-00949	P55 Marker
<b>U</b>	604-00950	P55 Marker
<b>V</b>	604-00951	P55 Marker
<b>W</b>	604-00952	P55 Marker
<b>X</b>	604-00953	P55 Marker
<b>Y</b>	604-00954	P55 Marker
<b>Z</b>	604-00955	P55 Marker
<b>+</b>	604-00958	P55 Marker
<b>-</b>	604-00959	P55 Marker
<b>/</b>	604-00960	P55 Marker
<b>÷</b>	604-00961	P55 Marker
<b>0</b>	604-00921	P55 Marker
<b>1</b>	604-00922	P55 Marker
<b>2</b>	604-00923	P55 Marker
<b>3</b>	604-00924	P55 Marker
<b>4</b>	604-00911	P55 Marker
<b>5</b>	604-00925	P55 Marker
<b>6</b>	604-00926	P55 Marker
<b>7</b>	604-00927	P55 Marker
<b>8</b>	604-00928	P55 Marker
<b>9</b>	604-00929	P55 Marker



PU8 semi severed colour code		
	Article-No.	Type
<b>0</b>	521-10100	PU8 Marker
<b>1</b>	521-10101	PU8 Marker
<b>2</b>	521-10102	PU8 Marker
<b>3</b>	521-10103	PU8 Marker
<b>4</b>	521-10104	PU8 Marker
<b>5</b>	521-10105	PU8 Marker
<b>6</b>	521-10106	PU8 Marker
<b>7</b>	521-10107	PU8 Marker
<b>8</b>	521-10108	PU8 Marker
<b>9</b>	521-10109	PU8 Marker



PU10 semi severed colour code		
	Article-No.	Type
<b>0</b>	521-10202	PU10 Marker
<b>1</b>	521-10203	PU10 Marker
<b>2</b>	521-10204	PU10 Marker
<b>3</b>	521-10205	PU10 Marker
<b>4</b>	521-10206	PU10 Marker
<b>5</b>	521-10207	PU10 Marker
<b>6</b>	521-10208	PU10 Marker
<b>7</b>	521-10209	PU10 Marker
<b>8</b>	521-10210	PU10 Marker
<b>9</b>	521-10211	PU10 Marker



PU8 semi severed yellow		
	Article-No.	Type
<b>A</b>	521-10131	PU8 Marker
<b>B</b>	521-10132	PU8 Marker
<b>C</b>	521-10133	PU8 Marker
<b>D</b>	521-10134	PU8 Marker
<b>E</b>	521-10135	PU8 Marker
<b>F</b>	521-10136	PU8 Marker
<b>G</b>	521-10137	PU8 Marker
<b>H</b>	521-10138	PU8 Marker
<b>I</b>	521-10139	PU8 Marker
<b>J</b>	521-10140	PU8 Marker
<b>K</b>	521-10141	PU8 Marker
<b>L</b>	521-10142	PU8 Marker
<b>M</b>	521-10143	PU8 Marker
<b>N</b>	521-10144	PU8 Marker
<b>O</b>	521-10145	PU8 Marker
<b>P</b>	521-10146	PU8 Marker
<b>Q</b>	521-10147	PU8 Marker
<b>R</b>	521-10148	PU8 Marker
<b>S</b>	521-10149	PU8 Marker
<b>T</b>	521-10150	PU8 Marker
<b>U</b>	521-10151	PU8 Marker
<b>V</b>	521-10152	PU8 Marker
<b>W</b>	521-10153	PU8 Marker
<b>X</b>	521-10154	PU8 Marker
<b>Y</b>	521-10155	PU8 Marker
<b>Z</b>	521-10156	PU8 Marker
<b>+</b>	521-10157	PU8 Marker
<b>-</b>	521-10158	PU8 Marker
<b>/</b>	521-10159	PU8 Marker
<b>±</b>	521-10160	PU8 Marker
<b>0</b>	521-10122	PU8 Marker
<b>1</b>	521-10123	PU8 Marker
<b>2</b>	521-10124	PU8 Marker
<b>3</b>	521-10125	PU8 Marker
<b>4</b>	521-10104	PU8 Marker
<b>5</b>	521-10126	PU8 Marker
<b>6</b>	521-10127	PU8 Marker
<b>7</b>	521-10128	PU8 Marker
<b>8</b>	521-10129	PU8 Marker
<b>9</b>	521-10130	PU8 Marker



PU10 semi severed yellow		
	Article-No.	Type
<b>A</b>	521-10241	PU10 Marker
<b>B</b>	521-10242	PU10 Marker
<b>C</b>	521-10243	PU10 Marker
<b>D</b>	521-10244	PU10 Marker
<b>E</b>	521-10245	PU10 Marker
<b>F</b>	521-10246	PU10 Marker
<b>G</b>	521-10247	PU10 Marker
<b>H</b>	521-10248	PU10 Marker
<b>I</b>	521-10249	PU10 Marker
<b>J</b>	521-10250	PU10 Marker
<b>K</b>	521-10251	PU10 Marker
<b>L</b>	521-10252	PU10 Marker
<b>M</b>	521-10253	PU10 Marker
<b>N</b>	521-10254	PU10 Marker
<b>O</b>	521-10255	PU10 Marker
<b>P</b>	521-10256	PU10 Marker
<b>Q</b>	521-10257	PU10 Marker
<b>R</b>	521-10258	PU10 Marker
<b>S</b>	521-10259	PU10 Marker
<b>T</b>	521-10260	PU10 Marker
<b>U</b>	521-10261	PU10 Marker
<b>V</b>	521-10262	PU10 Marker
<b>W</b>	521-10263	PU10 Marker
<b>X</b>	521-10264	PU10 Marker
<b>Y</b>	521-10265	PU10 Marker
<b>Z</b>	521-10266	PU10 Marker
<b>+</b>	521-10267	PU10 Marker
<b>-</b>	521-10268	PU10 Marker
<b>/</b>	521-10269	PU10 Marker
<b>±</b>	521-10270	PU10 Marker
<b>0</b>	521-10232	PU10 Marker
<b>1</b>	521-10233	PU10 Marker
<b>2</b>	521-10234	PU10 Marker
<b>3</b>	521-10235	PU10 Marker
<b>4</b>	521-10206	PU10 Marker
<b>5</b>	521-10236	PU10 Marker
<b>6</b>	521-10237	PU10 Marker
<b>7</b>	521-10238	PU10 Marker
<b>8</b>	521-10239	PU10 Marker
<b>9</b>	521-10240	PU10 Marker



PU12 semi severed colour code

	Article-No.	Type
<b>0</b>	521-10300	PU12 Marker
<b>1</b>	521-10301	PU12 Marker
<b>2</b>	521-10302	PU12 Marker
<b>3</b>	521-10303	PU12 Marker
<b>4</b>	521-10304	PU12 Marker
<b>5</b>	521-10305	PU12 Marker
<b>6</b>	521-10306	PU12 Marker
<b>7</b>	521-10307	PU12 Marker
<b>8</b>	521-10308	PU12 Marker
<b>9</b>	521-10309	PU12 Marker



PU15 semi severed colour code

	Article-No.	Type
<b>0</b>	521-10400	PU15 Marker
<b>1</b>	521-10401	PU15 Marker
<b>2</b>	521-10402	PU15 Marker
<b>3</b>	521-10403	PU15 Marker
<b>4</b>	521-10404	PU15 Marker
<b>5</b>	521-10405	PU15 Marker
<b>6</b>	521-10406	PU15 Marker
<b>7</b>	521-10407	PU15 Marker
<b>8</b>	521-10408	PU15 Marker
<b>9</b>	521-10409	PU15 Marker



PU12 semi severed yellow

	Article-No.	Type
<b>A</b>	521-10338	PU12 Marker
<b>B</b>	521-10339	PU12 Marker
<b>C</b>	521-10340	PU12 Marker
<b>D</b>	521-10341	PU12 Marker
<b>E</b>	521-10342	PU12 Marker
<b>F</b>	521-10343	PU12 Marker
<b>G</b>	521-10344	PU12 Marker
<b>H</b>	521-10345	PU12 Marker
<b>I</b>	521-10346	PU12 Marker
<b>J</b>	521-10347	PU12 Marker
<b>K</b>	521-10348	PU12 Marker
<b>L</b>	521-10349	PU12 Marker
<b>M</b>	521-10350	PU12 Marker
<b>N</b>	521-10351	PU12 Marker
<b>O</b>	521-10352	PU12 Marker
<b>P</b>	521-10353	PU12 Marker
<b>Q</b>	521-10354	PU12 Marker
<b>R</b>	521-10355	PU12 Marker
<b>S</b>	521-10356	PU12 Marker
<b>T</b>	521-10357	PU12 Marker
<b>U</b>	521-10358	PU12 Marker
<b>V</b>	521-10359	PU12 Marker
<b>W</b>	521-10360	PU12 Marker
<b>X</b>	521-10361	PU12 Marker
<b>Y</b>	521-10362	PU12 Marker
<b>Z</b>	521-10363	PU12 Marker
<b>+</b>	521-10372	PU12 Marker
<b>-</b>	521-10373	PU12 Marker
<b>/</b>	521-10374	PU12 Marker
<b>±</b>	521-10375	PU12 Marker
<b>0</b>	521-10329	PU12 Marker
<b>1</b>	521-10330	PU12 Marker
<b>2</b>	521-10331	PU12 Marker
<b>3</b>	521-10332	PU12 Marker
<b>4</b>	521-10304	PU12 Marker
<b>5</b>	521-10333	PU12 Marker
<b>6</b>	521-10334	PU12 Marker
<b>7</b>	521-10335	PU12 Marker
<b>8</b>	521-10336	PU12 Marker
<b>9</b>	521-10337	PU12 Marker



PU15 semi severed yellow

	Article-No.	Type
<b>A</b>	521-10469	PU15 Marker
<b>B</b>	521-10470	PU15 Marker
<b>C</b>	521-10471	PU15 Marker
<b>D</b>	521-10472	PU15 Marker
<b>E</b>	521-10473	PU15 Marker
<b>F</b>	521-10474	PU15 Marker
<b>G</b>	521-10475	PU15 Marker
<b>H</b>	521-10476	PU15 Marker
<b>I</b>	521-10477	PU15 Marker
<b>J</b>	521-10478	PU15 Marker
<b>K</b>	521-10479	PU15 Marker
<b>L</b>	521-10480	PU15 Marker
<b>M</b>	521-10481	PU15 Marker
<b>N</b>	521-10482	PU15 Marker
<b>O</b>	521-10483	PU15 Marker
<b>P</b>	521-10484	PU15 Marker
<b>Q</b>	521-10485	PU15 Marker
<b>R</b>	521-10486	PU15 Marker
<b>S</b>	521-10487	PU15 Marker
<b>T</b>	521-10488	PU15 Marker
<b>U</b>	521-10489	PU15 Marker
<b>V</b>	521-10490	PU15 Marker
<b>W</b>	521-10491	PU15 Marker
<b>X</b>	521-10492	PU15 Marker
<b>Y</b>	521-10493	PU15 Marker
<b>Z</b>	521-10494	PU15 Marker
<b>+</b>	521-10514	PU15 Marker
<b>-</b>	521-10515	PU15 Marker
<b>/</b>	521-10516	PU15 Marker
<b>±</b>	521-10517	PU15 Marker
<b>0</b>	521-10460	PU15 Marker
<b>1</b>	521-10461	PU15 Marker
<b>2</b>	521-10462	PU15 Marker
<b>3</b>	521-10463	PU15 Marker
<b>4</b>	521-10404	PU15 Marker
<b>5</b>	521-10464	PU15 Marker
<b>6</b>	521-10465	PU15 Marker
<b>7</b>	521-10466	PU15 Marker
<b>8</b>	521-10467	PU15 Marker
<b>9</b>	521-10468	PU15 Marker



PU20 semi severed colour code

	Article-No.	Type
<b>0</b>	521-10600	PU20 Marker
<b>1</b>	521-10601	PU20 Marker
<b>2</b>	521-10602	PU20 Marker
<b>3</b>	521-10603	PU20 Marker
<b>4</b>	521-10604	PU20 Marker
<b>5</b>	521-10605	PU20 Marker
<b>6</b>	521-10606	PU20 Marker
<b>7</b>	521-10607	PU20 Marker
<b>8</b>	521-10608	PU20 Marker
<b>9</b>	521-10609	PU20 Marker



PU25 semi severed colour code

	Article-No.	Type
<b>0</b>	521-10700	PU25 Marker
<b>1</b>	521-10701	PU25 Marker
<b>2</b>	521-10702	PU25 Marker
<b>3</b>	521-10703	PU25 Marker
<b>4</b>	521-10704	PU25 Marker
<b>5</b>	521-10705	PU25 Marker
<b>6</b>	521-10706	PU25 Marker
<b>7</b>	521-10707	PU25 Marker
<b>8</b>	521-10708	PU25 Marker
<b>9</b>	521-10709	PU25 Marker



PU20 semi severed yellow

	Article-No.	Type
<b>A</b>	521-10635	PU20 Marker
<b>B</b>	521-10636	PU20 Marker
<b>C</b>	521-10637	PU20 Marker
<b>D</b>	521-10638	PU20 Marker
<b>E</b>	521-10639	PU20 Marker
<b>F</b>	521-10640	PU20 Marker
<b>G</b>	521-10641	PU20 Marker
<b>H</b>	521-10642	PU20 Marker
<b>I</b>	521-10643	PU20 Marker
<b>J</b>	521-10644	PU20 Marker
<b>K</b>	521-10645	PU20 Marker
<b>L</b>	521-10646	PU20 Marker
<b>M</b>	521-10647	PU20 Marker
<b>N</b>	521-10648	PU20 Marker
<b>O</b>	521-10649	PU20 Marker
<b>P</b>	521-10650	PU20 Marker
<b>Q</b>	521-10651	PU20 Marker
<b>R</b>	521-10652	PU20 Marker
<b>S</b>	521-10653	PU20 Marker
<b>T</b>	521-10654	PU20 Marker
<b>U</b>	521-10655	PU20 Marker
<b>V</b>	521-10656	PU20 Marker
<b>W</b>	521-10657	PU20 Marker
<b>X</b>	521-10658	PU20 Marker
<b>Y</b>	521-10659	PU20 Marker
<b>Z</b>	521-10660	PU20 Marker
<b>+</b>	521-10663	PU20 Marker
<b>-</b>	521-10664	PU20 Marker
<b>/</b>	521-10665	PU20 Marker
<b>±</b>	521-10666	PU20 Marker
<b>0</b>	521-10626	PU20 Marker
<b>1</b>	521-10627	PU20 Marker
<b>2</b>	521-10628	PU20 Marker
<b>3</b>	521-10629	PU20 Marker
<b>4</b>	521-10604	PU20 Marker
<b>5</b>	521-10630	PU20 Marker
<b>6</b>	521-10631	PU20 Marker
<b>7</b>	521-10632	PU20 Marker
<b>8</b>	521-10633	PU20 Marker
<b>9</b>	521-10634	PU20 Marker



PU25 semi severed yellow

	Article-No.	Type
<b>A</b>	521-10806	PU25 Marker
<b>B</b>	521-10807	PU25 Marker
<b>C</b>	521-10808	PU25 Marker
<b>D</b>	521-10809	PU25 Marker
<b>E</b>	521-10810	PU25 Marker
<b>F</b>	521-10811	PU25 Marker
<b>G</b>	521-10812	PU25 Marker
<b>H</b>	521-10813	PU25 Marker
<b>I</b>	521-10814	PU25 Marker
<b>J</b>	521-10815	PU25 Marker
<b>K</b>	521-10816	PU25 Marker
<b>L</b>	521-10817	PU25 Marker
<b>M</b>	521-10818	PU25 Marker
<b>N</b>	521-10819	PU25 Marker
<b>O</b>	521-10820	PU25 Marker
<b>P</b>	521-10821	PU25 Marker
<b>Q</b>	521-10822	PU25 Marker
<b>R</b>	521-10823	PU25 Marker
<b>S</b>	521-10824	PU25 Marker
<b>T</b>	521-10825	PU25 Marker
<b>U</b>	521-10826	PU25 Marker
<b>V</b>	521-10827	PU25 Marker
<b>W</b>	521-10828	PU25 Marker
<b>X</b>	521-10829	PU25 Marker
<b>Y</b>	521-10830	PU25 Marker
<b>Z</b>	521-10831	PU25 Marker
<b>+</b>	521-10848	PU25 Marker
<b>-</b>	521-10849	PU25 Marker
<b>/</b>	521-10850	PU25 Marker
<b>±</b>	521-10851	PU25 Marker
<b>0</b>	521-10797	PU25 Marker
<b>1</b>	521-10798	PU25 Marker
<b>2</b>	521-10799	PU25 Marker
<b>3</b>	521-10800	PU25 Marker
<b>4</b>	521-10704	PU25 Marker
<b>5</b>	521-10801	PU25 Marker
<b>6</b>	521-10802	PU25 Marker
<b>7</b>	521-10803	PU25 Marker
<b>8</b>	521-10804	PU25 Marker
<b>9</b>	521-10805	PU25 Marker



PU30 semi severed colour code		
	Article-No.	Type
0	521-10900	PU30 Marker
1	521-10901	PU30 Marker
2	521-10902	PU30 Marker
3	521-10903	PU30 Marker
4	521-10904	PU30 Marker
5	521-10905	PU30 Marker
6	521-10906	PU30 Marker
7	521-10907	PU30 Marker
8	521-10908	PU30 Marker
9	521-10909	PU30 Marker



PU40 semi severed colour code		
	Article-No.	Type
0	521-11000	PU40 Marker
1	521-11001	PU40 Marker
2	521-11002	PU40 Marker
3	521-11003	PU40 Marker
4	521-11004	PU40 Marker
5	521-11005	PU40 Marker
6	521-11006	PU40 Marker
7	521-11007	PU40 Marker
8	521-11008	PU40 Marker
9	521-11009	PU40 Marker



PU30 semi severed yellow		
	Article-No.	Type
A	521-10947	PU30 Marker
B	521-10948	PU30 Marker
C	521-10949	PU30 Marker
D	521-10950	PU30 Marker
E	521-10951	PU30 Marker
F	521-10952	PU30 Marker
G	521-10953	PU30 Marker
H	521-10954	PU30 Marker
I	521-10955	PU30 Marker
J	521-10956	PU30 Marker
K	521-10957	PU30 Marker
L	521-10958	PU30 Marker
M	521-10959	PU30 Marker
N	521-10960	PU30 Marker
O	521-10961	PU30 Marker
P	521-10962	PU30 Marker
Q	521-10963	PU30 Marker
R	521-10964	PU30 Marker
S	521-10965	PU30 Marker
T	521-10966	PU30 Marker
U	521-10967	PU30 Marker
V	521-10968	PU30 Marker
W	521-10969	PU30 Marker
X	521-10970	PU30 Marker
Y	521-10971	PU30 Marker
Z	521-10972	PU30 Marker
+	521-10973	PU30 Marker
-	521-10974	PU30 Marker
/	521-10975	PU30 Marker
±	521-10976	PU30 Marker
0	521-10938	PU30 Marker
1	521-10939	PU30 Marker
2	521-10940	PU30 Marker
3	521-10941	PU30 Marker
4	521-10904	PU30 Marker
5	521-10942	PU30 Marker
6	521-10943	PU30 Marker
7	521-10944	PU30 Marker
8	521-10945	PU30 Marker
9	521-10946	PU30 Marker



PU40 semi severed yellow		
	Article-No.	Type
A	521-11054	PU40 Marker
B	521-11055	PU40 Marker
C	521-11056	PU40 Marker
D	521-11057	PU40 Marker
E	521-11058	PU40 Marker
F	521-11059	PU40 Marker
G	521-11060	PU40 Marker
H	521-11061	PU40 Marker
I	521-11062	PU40 Marker
J	521-11063	PU40 Marker
K	521-11064	PU40 Marker
L	521-11065	PU40 Marker
M	521-11066	PU40 Marker
N	521-11067	PU40 Marker
O	521-11068	PU40 Marker
P	521-11069	PU40 Marker
Q	521-11070	PU40 Marker
R	521-11071	PU40 Marker
S	521-11072	PU40 Marker
T	521-11073	PU40 Marker
U	521-11074	PU40 Marker
V	521-11075	PU40 Marker
W	521-11076	PU40 Marker
X	521-11077	PU40 Marker
Y	521-11078	PU40 Marker
Z	521-11079	PU40 Marker
+	521-11080	PU40 Marker
-	521-11081	PU40 Marker
/	521-11082	PU40 Marker
±	521-11083	PU40 Marker
0	521-11045	PU40 Marker
1	521-11046	PU40 Marker
2	521-11047	PU40 Marker
3	521-11048	PU40 Marker
4	521-11004	PU40 Marker
5	521-11049	PU40 Marker
6	521-11050	PU40 Marker
7	521-11051	PU40 Marker
8	521-11052	PU40 Marker
9	521-11053	PU40 Marker



PU55 semi severed colour code

	Article-No.	Type
<b>0</b>	521-11100	PU55 Marker
<b>1</b>	521-11101	PU55 Marker
<b>2</b>	521-11102	PU55 Marker
<b>3</b>	521-11103	PU55 Marker
<b>4</b>	521-11104	PU55 Marker
<b>5</b>	521-11105	PU55 Marker
<b>6</b>	521-11106	PU55 Marker
<b>7</b>	521-11107	PU55 Marker
<b>8</b>	521-11108	PU55 Marker
<b>9</b>	521-11109	PU55 Marker



PU55 semi severed yellow

	Article-No.	Type
<b>A</b>	521-11149	PU55 Marker
<b>B</b>	521-11150	PU55 Marker
<b>C</b>	521-11151	PU55 Marker
<b>D</b>	521-11152	PU55 Marker
<b>E</b>	521-11153	PU55 Marker
<b>F</b>	521-11154	PU55 Marker
<b>G</b>	521-11155	PU55 Marker
<b>H</b>	521-11156	PU55 Marker
<b>I</b>	521-11157	PU55 Marker
<b>J</b>	521-11158	PU55 Marker
<b>K</b>	521-11159	PU55 Marker
<b>L</b>	521-11160	PU55 Marker
<b>M</b>	521-11161	PU55 Marker
<b>N</b>	521-11162	PU55 Marker
<b>O</b>	521-11163	PU55 Marker
<b>P</b>	521-11164	PU55 Marker
<b>Q</b>	521-11165	PU55 Marker
<b>R</b>	521-11166	PU55 Marker
<b>S</b>	521-11167	PU55 Marker
<b>T</b>	521-11168	PU55 Marker
<b>U</b>	521-11169	PU55 Marker
<b>V</b>	521-11170	PU55 Marker
<b>W</b>	521-11171	PU55 Marker
<b>X</b>	521-11172	PU55 Marker
<b>Y</b>	521-11173	PU55 Marker
<b>Z</b>	521-11174	PU55 Marker
<b>+</b>	521-11175	PU55 Marker
<b>-</b>	521-11176	PU55 Marker
<b>/</b>	521-11177	PU55 Marker
<b>±</b>	521-11178	PU55 Marker
<b>0</b>	521-11140	PU55 Marker
<b>1</b>	521-11141	PU55 Marker
<b>2</b>	521-11142	PU55 Marker
<b>3</b>	521-11143	PU55 Marker
<b>4</b>	521-11104	PU55 Marker
<b>5</b>	521-11144	PU55 Marker
<b>6</b>	521-11145	PU55 Marker
<b>7</b>	521-11146	PU55 Marker
<b>8</b>	521-11147	PU55 Marker
<b>9</b>	521-11148	PU55 Marker

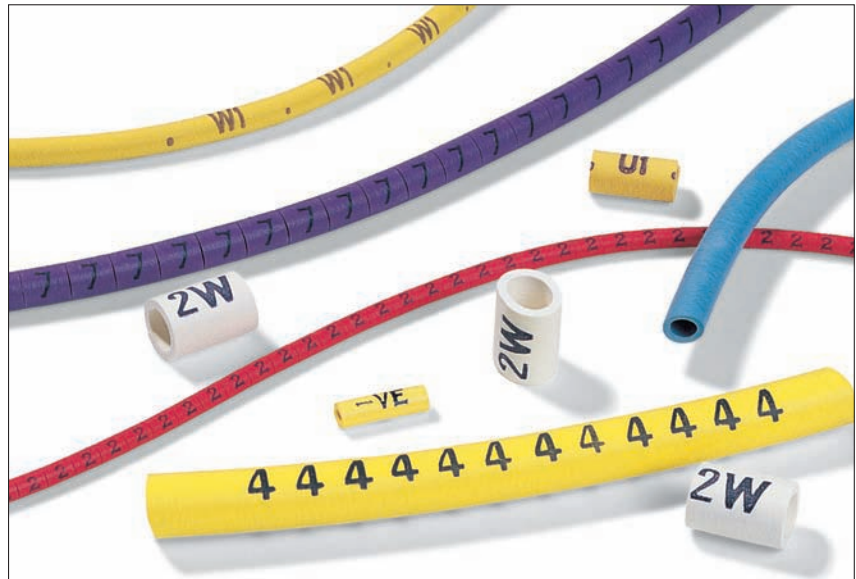
### Polychloroprene Markers H

#### Features and Benefits

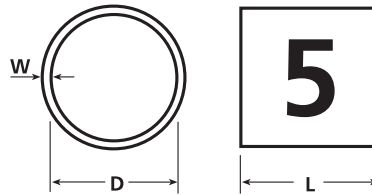
The range of Helsyn Markers is extruded from a high grade polychloroprene compound that gives excellent elasticity, and surface finish which is ideal for indelible marking. The polychloroprene markers are ideally suited for the identification of a wider range of wire and cable sizes in standard environments. The markers can be stretched x5 in fitting and x2 in continuous use. The high elasticity of the material ensures many cable diameters can be covered with one size of marker which helps toward keeping inventory costs down. Markers are available in international resistor colour coding.

#### Application

The polychloroprene markers (H) are ideally suited to rigorous environments such as aerospace, mass transit and defence markets.



Highly flexible, legible and easy to apply.



Material Data	
Material	Chloroprene (CR)
Colour	International resistor colour code
Flammability	UL94 HB
Operating Temperature	-65 °C to +95 °C, Intermittent 120 °C
Specification	IEC 304, IEC 757, BS 3858 Type 1, IEC 684-3-116, BS 3858 Type 2, BS 4 G 198 Part 1 Type 1, DEF STAN 59-15 D2

For more information on applicator tools refer to page 404.



Technical Table					
Type	Ø D	Wall (WT)	Length (L)	Pack Cont.	Application Tool
H12 Marker	1.2	0.7	3.0	1000	SS
H15 Marker	1.5	0.8	3.0	1000	SS
H20 Marker	2.0	0.8	5.0	1000	SS
H30 Marker	3.0	0.8	5.0	1000	S
H40 Marker	4.0	1.05	5.0	1000	S
H50 Marker	5.0	1.05	5.0	1000	K
H75 Marker	7.5	1.25	10.0	1000	K
H100 Marker	10.0	1.5	10.0	1000	K

All Dimensions in mm. Subject to technical changes.

H12 colour code



	Article-No.	Type
0	600-00001	H12 Marker
1	600-00002	H12 Marker
2	600-00003	H12 Marker
3	600-00004	H12 Marker
4	600-00005	H12 Marker
5	600-00006	H12 Marker
6	600-00007	H12 Marker
7	600-00008	H12 Marker
8	600-00009	H12 Marker
9	600-00010	H12 Marker

H40 colour code



	Article-No.	Type
0	600-00317	H40 Marker
1	600-00318	H40 Marker
2	600-00322	H40 Marker
3	600-00321	H40 Marker
4	600-00325	H40 Marker
5	600-00319	H40 Marker
6	600-00316	H40 Marker
7	600-00323	H40 Marker
8	600-00320	H40 Marker
9	600-00324	H40 Marker

H15 colour code



	Article-No.	Type
0	600-00302	H15 Marker
1	600-00303	H15 Marker
2	600-00307	H15 Marker
3	600-00306	H15 Marker
4	600-00310	H15 Marker
5	600-00304	H15 Marker
6	600-00301	H15 Marker
7	600-00308	H15 Marker
8	600-00305	H15 Marker
9	600-00309	H15 Marker

H50 colour code



	Article-No.	Type
0	600-00326	H50 Marker
1	600-00220	H50 Marker
2	600-00289	H50 Marker
3	600-00290	H50 Marker
4	600-00291	H50 Marker
5	600-00221	H50 Marker
6	600-00219	H50 Marker
7	600-00292	H50 Marker
8	600-00222	H50 Marker
9	600-00293	H50 Marker

H20 colour code



	Article-No.	Type
0	600-00284	H20 Marker
1	600-00285	H20 Marker
2	600-00286	H20 Marker
3	600-00313	H20 Marker
4	600-00315	H20 Marker
5	600-00287	H20 Marker
6	600-00311	H20 Marker
7	600-00288	H20 Marker
8	600-00312	H20 Marker
9	600-00314	H20 Marker

H75 colour code



	Article-No.	Type
0	600-00328	H75 Marker
1	600-00329	H75 Marker
2	600-00333	H75 Marker
3	600-00332	H75 Marker
4	600-00336	H75 Marker
5	600-00330	H75 Marker
6	600-00327	H75 Marker
7	600-00334	H75 Marker
8	600-00331	H75 Marker
9	600-00335	H75 Marker

H30 colour code



	Article-No.	Type
0	600-00097	H30 Marker
1	600-00098	H30 Marker
2	600-00099	H30 Marker
3	600-00100	H30 Marker
4	600-00101	H30 Marker
5	600-00102	H30 Marker
6	600-00103	H30 Marker
7	600-00104	H30 Marker
8	600-00105	H30 Marker
9	600-00106	H30 Marker

H100 colour code



	Article-No.	Type
0	600-00294	H100 Marker
1	600-00278	H100 Marker
2	600-00280	H100 Marker
3	600-00279	H100 Marker
4	600-00300	H100 Marker
5	600-00296	H100 Marker
6	600-00295	H100 Marker
7	600-00298	H100 Marker
8	600-00297	H100 Marker
9	600-00299	H100 Marker



**PVC Nitrile Markers NT**

**Features and Benefits**

This range of markers is made from a high temperature PVC Nitrile rubber compound which ensures survivability in high temperature areas. The markers are ideal for use in more aggressive environments. Due to their high elasticity, the markers can be stretched x5 in fitting x2 in continuous use. The high elasticity of the material ensures many cable diameters can be covered with one size of marker which helps toward keeping inventory costs down.

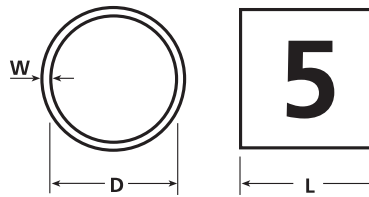
Markers are available in international resistor colour coding.

**Application**

The PVC nitrile markers (NT) are ideally suited to rigorous environments such as aerospace, mass transit and defence markets.



The highly flexible PVC Nitrile markers are available in a large range of sizes and colours.



Material Data

Material	<b>PVC / Nitrile</b>
Colour	<b>International resistor colour code</b>
Operating Temperature	<b>-65 °C to +120 °C, Intermittent 150 °C</b>
Certification	<b>BS 4G 198 Part 1 Type 2, IEC 304, IEC 757, BS 3858 Type 4, DEF STAN 59-15 Type D3</b>

For more information on applicator tools refer to page 404.

Technical Table



Type	Ø D	Wall (WT)	Length (L)	Pack Cont.	Application Tool
<b>NT5 Marker</b>	0.5	0.6	3.0	1000	–
<b>NT8 Marker</b>	0.8	0.6	3.0	1000	–
<b>NT10 Marker</b>	1.0	0.6	3.0	1000	SS
<b>NT15 Marker</b>	1.5	0.6	3.0	1000	SS
<b>NT20 Marker</b>	2.0	0.6	5.0	1000	SS
<b>NT30 Marker</b>	3.0	1.0	5.0	1000	S
<b>NT50 Marker</b>	5.0	1.0	5.0	1000	K
<b>NT75 Marker</b>	7.5	1.25	10.0	1000	K

All Dimensions in mm. Subject to technical changes.

NT5 colour code



	Article-No.	Type
<b>0</b>	602-00000	NT5 Marker
<b>1</b>	602-00001	NT5 Marker
<b>2</b>	602-00002	HT5 Marker
<b>3</b>	602-00003	NT5 Marker
<b>4</b>	602-00004	NT5 Marker
<b>5</b>	602-00005	NT5 Marker
<b>6</b>	602-00006	NT5 Marker
<b>7</b>	602-00007	NT5 Marker
<b>8</b>	602-00008	NT5 Marker
<b>9</b>	602-00009	NT5 Marker

NT20 colour code



	Article-No.	Type
<b>0</b>	602-00413	NT20 Marker
<b>1</b>	602-00414	NT20 Marker
<b>2</b>	602-00415	NT20 Marker
<b>3</b>	602-00416	NT20 Marker
<b>4</b>	602-00417	NT20 Marker
<b>5</b>	602-00418	NT20 Marker
<b>6</b>	602-00419	NT20 Marker
<b>7</b>	602-00420	NT20 Marker
<b>8</b>	602-00421	NT20 Marker
<b>9</b>	602-00422	NT20 Marker

NT8 colour code



	Article-No.	Type
<b>0</b>	602-00119	NT8 Marker
<b>1</b>	602-00120	NT8 Marker
<b>2</b>	602-00121	NT8 Marker
<b>3</b>	602-00122	NT8 Marker
<b>4</b>	602-00123	NT8 Marker
<b>5</b>	602-00124	NT8 Marker
<b>6</b>	602-00125	NT8 Marker
<b>7</b>	602-00126	NT8 Marker
<b>8</b>	602-00127	NT8 Marker
<b>9</b>	602-00128	NT8 Marker



NT30 colour code

	Article-No.	Type
<b>0</b>	602-00558	NT30 Marker
<b>1</b>	602-00559	NT30 Marker
<b>2</b>	602-00560	NT30 Marker
<b>3</b>	602-00561	NT30 Marker
<b>4</b>	602-00562	NT30 Marker
<b>5</b>	602-00563	NT30 Marker
<b>6</b>	602-00564	NT30 Marker
<b>7</b>	602-00565	NT30 Marker
<b>8</b>	602-00566	NT30 Marker
<b>9</b>	602-00567	NT30 Marker

NT10 colour code



	Article-No.	Type
<b>0</b>	602-00204	NT10 Marker
<b>1</b>	602-00205	NT10 Marker
<b>2</b>	602-00206	NT10 Marker
<b>3</b>	602-00207	NT10 Marker
<b>4</b>	602-00208	NT10 Marker
<b>5</b>	602-00209	NT10 Marker
<b>6</b>	602-00210	NT10 Marker
<b>7</b>	602-00211	NT10 Marker
<b>8</b>	602-00212	NT10 Marker
<b>9</b>	602-00213	NT10 Marker



NT75 colour code

	Article-No.	Type
<b>0</b>	602-00708	NT75 Marker
<b>1</b>	602-00709	NT75 Marker
<b>2</b>	602-00710	NT75 Marker
<b>3</b>	602-00711	NT75 Marker
<b>4</b>	602-00712	NT75 Marker
<b>5</b>	602-00713	NT75 Marker
<b>6</b>	602-00714	NT75 Marker
<b>7</b>	602-00715	NT75 Marker
<b>8</b>	602-00716	NT75 Marker
<b>9</b>	602-00717	NT75 Marker

NT15 colour code



	Article-No.	Type
<b>0</b>	602-00304	NT15 Marker
<b>1</b>	602-00305	NT15 Marker
<b>2</b>	602-00306	NT15 Marker
<b>3</b>	602-00307	NT15 Marker
<b>4</b>	602-00308	NT15 Marker
<b>5</b>	602-00309	NT15 Marker
<b>6</b>	602-00310	NT15 Marker
<b>7</b>	602-00311	NT15 Marker
<b>8</b>	602-00312	NT15 Marker
<b>9</b>	602-00313	NT15 Marker

**Silicone Markers SLP**

**Features and Benefits**

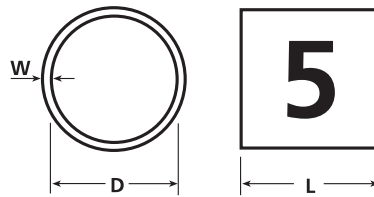
SLP markers are extruded from the highest quality silicone tubing. SLP is a high grade halogen-free marker. The high elasticity of the material ensures many cable diameters can be covered with one size of marker. Can withstand up to 250°C intermittent temperature. Markers are available in international resistor colour coding.

**Application**

These silicone markers (SLP) are halogen free and are ideally suited to rigorous environments such as aerospace, mass transit and defence markets. They are recommended for use in all areas where large numbers of people will be present in confined areas and are also ideal for use in areas where sensitive equipment is housed.



A large range of sizes and colours are available.



**Material Data**

Material	<b>Silicone (SI)</b>
Colour	<b>International resistor colour code</b>
Flammability	<b>Halogen free, UL94 HB</b>
Operating Temperature	<b>-65 °C to +180 °C, Intermittent 250 °C</b>
Specification	<b>BS 3G 198 Type 4, BS 2848 Type 5 Class 105T, BS 3858 Type 5</b>

For more information on applicator tools refer to page 404.

**Technical Table**



Type	Ø D	Wall (WT)	Length (L)	Pack Cont.	Application Tool
SLP5 Marker	0.5	0.5	3.0	1000	-
SLP8 Marker	0.8	0.5	3.0	1000	-
SLP10 Marker	1.0	0.5	3.0	1000	SS
SLP15 Marker	1.5	0.5	3.0	1000	SS
SLP20 Marker	2.0	0.5	5.0	1000	SS
SLP25 Marker	2.5	0.5	5.0	1000	S
SLP30 Marker	3.0	0.5	5.0	1000	S

All Dimensions in mm. Subject to technical changes.

SLP5 colour code



	Article-No.	Type
<b>0</b>	606-00000	SLP5 Marker
<b>1</b>	606-00001	SLP5 Marker
<b>2</b>	606-00002	SLP5 Marker
<b>3</b>	606-00003	SLP5 Marker
<b>4</b>	606-00004	SLP5 Marker
<b>5</b>	606-00005	SLP5 Marker
<b>6</b>	606-00006	SLP5 Marker
<b>7</b>	606-00007	SLP5 Marker
<b>8</b>	606-00008	SLP5 Marker
<b>9</b>	606-00009	SLP5 Marker

SLP20 colour code



	Article-No.	Type
<b>0</b>	606-00040	SLP20 Marker
<b>1</b>	606-00041	SLP20 Marker
<b>2</b>	606-00042	SLP20 Marker
<b>3</b>	606-00043	SLP20 Marker
<b>4</b>	606-00044	SLP20 Marker
<b>5</b>	606-00045	SLP20 Marker
<b>6</b>	606-00046	SLP20 Marker
<b>7</b>	606-00047	SLP20 Marker
<b>8</b>	606-00048	SLP20 Marker
<b>9</b>	606-00049	SLP20 Marker

SLP8 colour code



	Article-No.	Type
<b>0</b>	606-00010	SLP8 Marker
<b>1</b>	606-00011	SLP8 Marker
<b>2</b>	606-00012	SLP8 Marker
<b>3</b>	606-00013	SLP8 Marker
<b>4</b>	606-00014	SLP8 Marker
<b>5</b>	606-00015	SLP8 Marker
<b>6</b>	606-00016	SLP8 Marker
<b>7</b>	606-00017	SLP8 Marker
<b>8</b>	606-00018	SLP8 Marker
<b>9</b>	606-00019	SLP8 Marker

SLP25 colour code



	Article-No.	Type
<b>0</b>	606-00050	SLP25 Marker
<b>1</b>	606-00051	SLP25 Marker
<b>2</b>	606-00052	SLP25 Marker
<b>3</b>	606-00053	SLP25 Marker
<b>4</b>	606-00054	SLP25 Marker
<b>5</b>	606-00055	SLP25 Marker
<b>6</b>	606-00056	SLP25 Marker
<b>7</b>	606-00057	SLP25 Marker
<b>8</b>	606-00058	SLP25 Marker
<b>9</b>	606-00059	SLP25 Marker

SLP10 colour code



	Article-No.	Type
<b>0</b>	606-00020	SLP10 Marker
<b>1</b>	606-00021	SLP10 Marker
<b>2</b>	606-00022	SLP10 Marker
<b>3</b>	606-00023	SLP10 Marker
<b>4</b>	606-00024	SLP10 Marker
<b>5</b>	606-00025	SLP10 Marker
<b>6</b>	606-00026	SLP10 Marker
<b>7</b>	606-00027	SLP10 Marker
<b>8</b>	606-00028	SLP10 Marker
<b>9</b>	606-00029	SLP10 Marker

SLP30 colour code



	Article-No.	Type
<b>0</b>	606-00060	SLP30 Marker
<b>1</b>	606-00061	SLP30 Marker
<b>2</b>	606-00062	SLP30 Marker
<b>3</b>	606-00063	SLP30 Marker
<b>4</b>	606-00064	SLP30 Marker
<b>5</b>	606-00065	SLP30 Marker
<b>6</b>	606-00066	SLP30 Marker
<b>7</b>	606-00067	SLP30 Marker
<b>8</b>	606-00068	SLP30 Marker
<b>9</b>	606-00069	SLP30 Marker

SLP15 colour code



	Article-No.	Type
<b>0</b>	606-00030	SLP15 Marker
<b>1</b>	606-00031	SLP15 Marker
<b>2</b>	606-00032	SLP15 Marker
<b>3</b>	606-00033	SLP15 Marker
<b>4</b>	606-00034	SLP15 Marker
<b>5</b>	606-00035	SLP15 Marker
<b>6</b>	606-00036	SLP15 Marker
<b>7</b>	606-00037	SLP15 Marker
<b>8</b>	606-00038	SLP15 Marker
<b>9</b>	606-00039	SLP15 Marker

### Embossed Polychloroprene Markers

#### Features and Benefits

These semi-severed markers are highly elastic (up to 400% of supplied internal diameter) and will fit tightly onto a wide range of wire sizes.

The embossed characters give excellent visibility due to the prominence of the character ensuring high visibility in areas prone to dirt and debris.

They can be supplied either semi severed in a strip form (easy to tear off by hand) or fully severed as individual markers. The markers are applied using series NA or VA applicator tools.



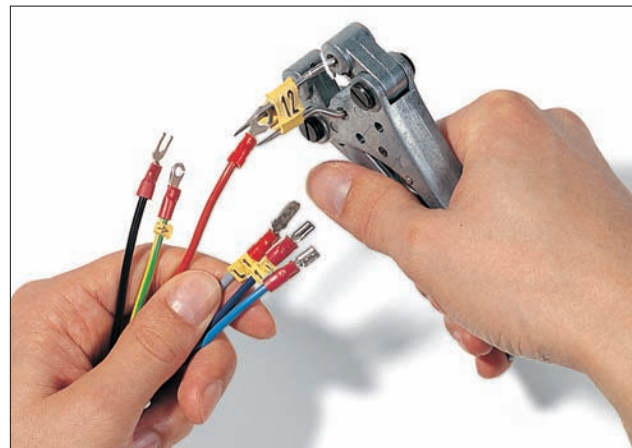
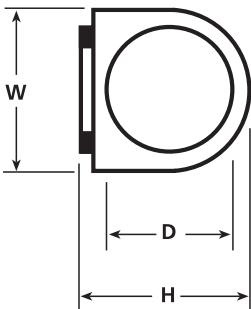
ABR is manufactured from a polychloroprene material and is ROHS compliant

Highly flexible, legible and easy to apply.

#### Application

Ideally suited for the automotive industry for the identification coding of ignition cables. The embossed mark ensures clear legibility even in areas where dust and debris is found.

Material Data	
Material	<b>Chloroprene (CR)</b>
Colour	<b>Yellow (YE)</b>
Operating Temperature	<b>-25 °C to +90 °C, Intermittent +100 °C</b>
Shore Hardness A	<b>Elastomer 31 +/- 5% Shore A</b>
Flammability	<b>UL94 HB and FMVSS-302</b>



The sleeve applicator tool allows markers to be fitted after crimping.

Technical Table

Type	Ø D max.	Ø D	Width (W)	Height (H)	Length (L)	Application Tool
ABR.1	3.5	1.75	4.0	4.5	3.0	SS
ABR.2	6.0	3.0	5.0	5.5	4.0	SS
ABR.3	9.0	5.0	8.0	8.5	5.0	S
ABR.4	13.0	7.5	10.0	10.5	6.0	K
ABR.5	17.0	10.0	13.0	13.5	8.0	K

All Dimensions in mm. Subject to technical changes.

For more detailed information please refer to chapter Application Tools on page 404.

Abr.1 semi severed

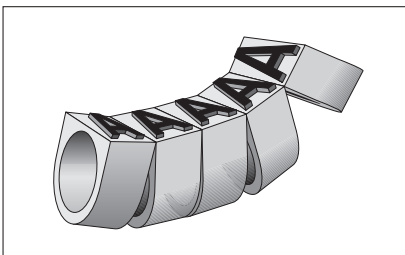
	Article-No.	Type
<b>A</b>	501-01014	<b>ABR.1-A</b>
<b>B</b>	501-01024	<b>ABR.1-B</b>
<b>C</b>	501-01034	<b>ABR.1-C</b>
<b>D</b>	501-01044	<b>ABR.1-D</b>
<b>E</b>	501-01054	<b>ABR.1-E</b>
<b>F</b>	501-01064	<b>ABR.1-F</b>
<b>G</b>	501-01074	<b>ABR.1-G</b>
<b>H</b>	501-01084	<b>ABR.1-H</b>
<b>I</b>	501-01094	<b>ABR.1-I</b>
<b>J</b>	501-01104	<b>ABR.1-J</b>
<b>K</b>	501-01114	<b>ABR.1-K</b>
<b>L</b>	501-01124	<b>ABR.1-L</b>
<b>M</b>	501-01134	<b>ABR.1-M</b>
<b>N</b>	501-01144	<b>ABR.1-N</b>
<b>O</b>	501-01154	<b>ABR.1-O</b>
<b>P</b>	501-01164	<b>ABR.1-P</b>
<b>Q</b>	501-01174	<b>ABR.1-Q</b>
<b>R</b>	501-01184	<b>ABR.1-R</b>
<b>S</b>	501-01194	<b>ABR.1-S</b>
<b>T</b>	501-01204	<b>ABR.1-T</b>
<b>U</b>	501-01214	<b>ABR.1-U</b>
<b>V</b>	501-01224	<b>ABR.1-V</b>
<b>W</b>	501-01234	<b>ABR.1-W</b>
<b>X</b>	501-01244	<b>ABR.1-X</b>
<b>Y</b>	501-01254	<b>ABR.1-Y</b>
<b>Z</b>	501-01264	<b>ABR.1-Z</b>
<b>+</b>	501-01274	<b>ABR.1-+</b>
<b>-</b>	501-01284	<b>ABR.1--</b>
<b>0</b>	501-01604	<b>ABR.1-0</b>
<b>1</b>	501-01614	<b>ABR.1-1</b>
<b>2</b>	501-01624	<b>ABR.1-2</b>
<b>3</b>	501-01634	<b>ABR.1-3</b>
<b>4</b>	501-01644	<b>ABR.1-4</b>
<b>5</b>	501-01654	<b>ABR.1-5</b>
<b>6</b>	501-01664	<b>ABR.1-6</b>
<b>7</b>	501-01674	<b>ABR.1-7</b>
<b>8</b>	501-01684	<b>ABR.1-8</b>
<b>9</b>	501-01694	<b>ABR.1-9</b>

Abr.2 semi severed

	Article-No.	Type
<b>A</b>	501-02014	<b>ABR.2-A</b>
<b>B</b>	501-02024	<b>ABR.2-B</b>
<b>C</b>	501-02034	<b>ABR.2-C</b>
<b>D</b>	501-02044	<b>ABR.2-D</b>
<b>E</b>	501-02054	<b>ABR.2-E</b>
<b>F</b>	501-02064	<b>ABR.2-F</b>
<b>G</b>	501-02074	<b>ABR.2-G</b>
<b>H</b>	501-02084	<b>ABR.2-H</b>
<b>I</b>	501-02094	<b>ABR.2-I</b>
<b>J</b>	501-02104	<b>ABR.2-J</b>
<b>K</b>	501-02114	<b>ABR.2-K</b>
<b>L</b>	501-02124	<b>ABR.2-L</b>
<b>M</b>	501-02134	<b>ABR.2-M</b>
<b>N</b>	501-02144	<b>ABR.2-N</b>
<b>O</b>	501-02154	<b>ABR.2-O</b>
<b>P</b>	501-02164	<b>ABR.2-P</b>
<b>Q</b>	501-02174	<b>ABR.2-Q</b>
<b>R</b>	501-02184	<b>ABR.2-R</b>
<b>S</b>	501-02194	<b>ABR.2-S</b>
<b>T</b>	501-02204	<b>ABR.2-T</b>
<b>U</b>	501-02214	<b>ABR.2-U</b>
<b>V</b>	501-02224	<b>ABR.2-V</b>
<b>W</b>	501-02234	<b>ABR.2-W</b>
<b>X</b>	501-02244	<b>ABR.2-X</b>
<b>Y</b>	501-02254	<b>ABR.2-Y</b>
<b>Z</b>	501-02264	<b>ABR.2-Z</b>
<b>+</b>	501-02274	<b>ABR.2-+</b>
<b>-</b>	501-02284	<b>ABR.2--</b>
<b>0</b>	501-02604	<b>ABR.2-0</b>
<b>1</b>	501-02614	<b>ABR.2-1</b>
<b>2</b>	501-02624	<b>ABR.2-2</b>
<b>3</b>	501-02634	<b>ABR.2-3</b>
<b>4</b>	501-02644	<b>ABR.2-4</b>
<b>5</b>	501-02654	<b>ABR.2-5</b>
<b>6</b>	501-02664	<b>ABR.2-6</b>
<b>7</b>	501-02674	<b>ABR.2-7</b>
<b>8</b>	501-02684	<b>ABR.2-8</b>
<b>9</b>	501-02694	<b>ABR.2-9</b>

Abr.3 semi severed

	Article-No.	Type
<b>A</b>	501-03014	<b>ABR.3-A</b>
<b>B</b>	501-03024	<b>ABR.3-B</b>
<b>C</b>	501-03034	<b>ABR.3-C</b>
<b>D</b>	501-03044	<b>ABR.3-D</b>
<b>E</b>	501-03054	<b>ABR.3-E</b>
<b>F</b>	501-03064	<b>ABR.3-F</b>
<b>G</b>	501-03074	<b>ABR.3-G</b>
<b>H</b>	501-03084	<b>ABR.3-H</b>
<b>I</b>	501-03094	<b>ABR.3-I</b>
<b>J</b>	501-03104	<b>ABR.3-J</b>
<b>K</b>	501-03114	<b>ABR.3-K</b>
<b>L</b>	501-03124	<b>ABR.3-L</b>
<b>M</b>	501-03134	<b>ABR.3-M</b>
<b>N</b>	501-03144	<b>ABR.3-N</b>
<b>O</b>	501-03154	<b>ABR.3-O</b>
<b>P</b>	501-03164	<b>ABR.3-P</b>
<b>Q</b>	501-03174	<b>ABR.3-Q</b>
<b>R</b>	501-03184	<b>ABR.3-R</b>
<b>S</b>	501-03194	<b>ABR.3-S</b>
<b>T</b>	501-03204	<b>ABR.3-T</b>
<b>U</b>	501-03214	<b>ABR.3-U</b>
<b>V</b>	501-03224	<b>ABR.3-V</b>
<b>W</b>	501-03234	<b>ABR.3-W</b>
<b>X</b>	501-03244	<b>ABR.3-X</b>
<b>Y</b>	501-03254	<b>ABR.3-Y</b>
<b>Z</b>	501-03264	<b>ABR.3-Z</b>
<b>+</b>	501-03274	<b>ABR.3-+</b>
<b>-</b>	501-03284	<b>ABR.3--</b>
<b>0</b>	501-03604	<b>ABR.3-0</b>
<b>1</b>	501-03614	<b>ABR.3-1</b>
<b>2</b>	501-03624	<b>ABR.3-2</b>
<b>3</b>	501-03634	<b>ABR.3-3</b>
<b>4</b>	501-03644	<b>ABR.3-4</b>
<b>5</b>	501-03654	<b>ABR.3-5</b>
<b>6</b>	501-03664	<b>ABR.3-6</b>
<b>7</b>	501-03674	<b>ABR.3-7</b>
<b>8</b>	501-03684	<b>ABR.3-8</b>
<b>9</b>	501-03694	<b>ABR.3-9</b>



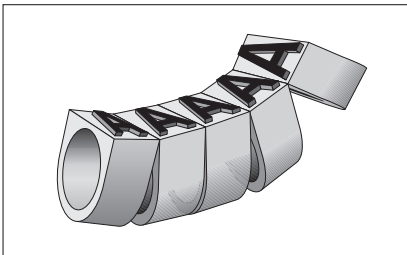
Special characters available on request.

Abr.4 semi severed

	Article-No.	Type
<b>A</b>	501-04014	<b>ABR.4-A</b>
<b>B</b>	501-04024	<b>ABR.4-B</b>
<b>C</b>	501-04034	<b>ABR.4-C</b>
<b>D</b>	501-04044	<b>ABR.4-D</b>
<b>E</b>	501-04054	<b>ABR.4-E</b>
<b>F</b>	501-04064	<b>ABR.4-F</b>
<b>G</b>	501-04074	<b>ABR.4-G</b>
<b>H</b>	501-04084	<b>ABR.4-H</b>
<b>I</b>	501-04094	<b>ABR.4-I</b>
<b>J</b>	501-04104	<b>ABR.4-J</b>
<b>K</b>	501-04114	<b>ABR.4-K</b>
<b>L</b>	501-04124	<b>ABR.4-L</b>
<b>M</b>	501-04134	<b>ABR.4-M</b>
<b>N</b>	501-04144	<b>ABR.4-N</b>
<b>O</b>	501-04154	<b>ABR.4-O</b>
<b>P</b>	501-04164	<b>ABR.4-P</b>
<b>Q</b>	501-04174	<b>ABR.4-Q</b>
<b>R</b>	501-04184	<b>ABR.4-R</b>
<b>S</b>	501-04194	<b>ABR.4-S</b>
<b>T</b>	501-04204	<b>ABR.4-T</b>
<b>U</b>	501-04214	<b>ABR.4-U</b>
<b>V</b>	501-04224	<b>ABR.4-V</b>
<b>W</b>	501-04234	<b>ABR.4-W</b>
<b>X</b>	501-04244	<b>ABR.4-X</b>
<b>Y</b>	501-04254	<b>ABR.4-Y</b>
<b>Z</b>	501-04264	<b>ABR.4-Z</b>
<b>+</b>	501-04274	<b>ABR.4-+</b>
<b>-</b>	501-04284	<b>ABR.4--</b>
<b>0</b>	501-04604	<b>ABR.4-0</b>
<b>1</b>	501-04614	<b>ABR.4-1</b>
<b>2</b>	501-04624	<b>ABR.4-2</b>
<b>3</b>	501-04634	<b>ABR.4-3</b>
<b>4</b>	501-04644	<b>ABR.4-4</b>
<b>5</b>	501-04654	<b>ABR.4-5</b>
<b>6</b>	501-04664	<b>ABR.4-6</b>
<b>7</b>	501-04674	<b>ABR.4-7</b>
<b>8</b>	501-04684	<b>ABR.4-8</b>
<b>9</b>	501-04694	<b>ABR.4-9</b>

Abr.5 semi severed

	Article-No.	Type
<b>A</b>	501-05014	<b>ABR.5-A</b>
<b>B</b>	501-05024	<b>ABR.5-B</b>
<b>C</b>	501-05034	<b>ABR.5-C</b>
<b>D</b>	501-05044	<b>ABR.5-D</b>
<b>E</b>	501-05054	<b>ABR.5-E</b>
<b>F</b>	501-05064	<b>ABR.5-F</b>
<b>G</b>	501-05074	<b>ABR.5-G</b>
<b>H</b>	501-05084	<b>ABR.5-H</b>
<b>I</b>	501-05094	<b>ABR.5-I</b>
<b>J</b>	501-05104	<b>ABR.5-J</b>
<b>K</b>	501-05114	<b>ABR.5-K</b>
<b>L</b>	501-05124	<b>ABR.5-L</b>
<b>M</b>	501-05134	<b>ABR.5-M</b>
<b>N</b>	501-05144	<b>ABR.5-N</b>
<b>O</b>	501-05154	<b>ABR.5-O</b>
<b>P</b>	501-05164	<b>ABR.5-P</b>
<b>Q</b>	501-05174	<b>ABR.5-Q</b>
<b>R</b>	501-05184	<b>ABR.5-R</b>
<b>S</b>	501-05194	<b>ABR.5-S</b>
<b>T</b>	501-05204	<b>ABR.5-T</b>
<b>U</b>	501-05214	<b>ABR.5-U</b>
<b>V</b>	501-05224	<b>ABR.5-V</b>
<b>W</b>	501-05234	<b>ABR.5-W</b>
<b>X</b>	501-05244	<b>ABR.5-X</b>
<b>Y</b>	501-05254	<b>ABR.5-Y</b>
<b>Z</b>	501-05264	<b>ABR.5-Z</b>
<b>+</b>	501-05274	<b>ABR.5-+</b>
<b>-</b>	501-05284	<b>ABR.5--</b>
<b>0</b>	501-05604	<b>ABR.5-0</b>
<b>1</b>	501-05614	<b>ABR.5-1</b>
<b>2</b>	501-05624	<b>ABR.5-2</b>
<b>3</b>	501-05634	<b>ABR.5-3</b>
<b>4</b>	501-05644	<b>ABR.5-4</b>
<b>5</b>	501-05654	<b>ABR.5-5</b>
<b>6</b>	501-05664	<b>ABR.5-6</b>
<b>7</b>	501-05674	<b>ABR.5-7</b>
<b>8</b>	501-05684	<b>ABR.5-8</b>
<b>9</b>	501-05694	<b>ABR.5-9</b>



Special characters available on request.

Pre/Post Termination Cable Markers

Abr. 1 fully severed

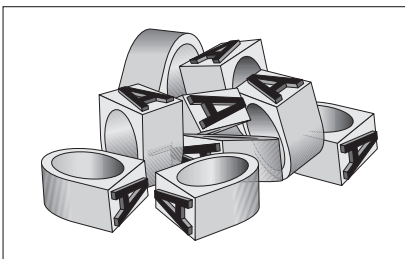
	Article-No.	Type
<b>A</b>	501-11014	<b>ABR.1G-A</b>
<b>B</b>	501-11024	<b>ABR.1G-B</b>
<b>C</b>	501-11034	<b>ABR.1G-C</b>
<b>D</b>	501-11044	<b>ABR.1G-D</b>
<b>E</b>	501-11054	<b>ABR.1G-E</b>
<b>F</b>	501-11064	<b>ABR.1G-F</b>
<b>G</b>	501-11074	<b>ABR.1G-G</b>
<b>H</b>	501-11084	<b>ABR.1G-H</b>
<b>I</b>	501-11094	<b>ABR.1G-I</b>
<b>J</b>	501-11104	<b>ABR.1G-J</b>
<b>K</b>	501-11114	<b>ABR.1G-K</b>
<b>L</b>	501-11124	<b>ABR.1G-L</b>
<b>M</b>	501-11134	<b>ABR.1G-M</b>
<b>N</b>	501-11144	<b>ABR.1G-N</b>
<b>O</b>	501-11154	<b>ABR.1G-O</b>
<b>P</b>	501-11164	<b>ABR.1G-P</b>
<b>Q</b>	501-11174	<b>ABR.1G-Q</b>
<b>R</b>	501-11184	<b>ABR.1G-R</b>
<b>S</b>	501-11194	<b>ABR.1G-S</b>
<b>T</b>	501-11204	<b>ABR.1G-T</b>
<b>U</b>	501-11214	<b>ABR.1G-U</b>
<b>V</b>	501-11224	<b>ABR.1G-V</b>
<b>W</b>	501-11234	<b>ABR.1G-W</b>
<b>X</b>	501-11244	<b>ABR.1G-X</b>
<b>Y</b>	501-11254	<b>ABR.1G-Y</b>
<b>Z</b>	501-11264	<b>ABR.1G-Z</b>
<b>+</b>	501-11274	<b>ABR.1G-+</b>
<b>-</b>	501-11284	<b>ABR.1G--</b>
<b>0</b>	501-11604	<b>ABR.1G-0</b>
<b>1</b>	501-11614	<b>ABR.1G-1</b>
<b>2</b>	501-11624	<b>ABR.1G-2</b>
<b>3</b>	501-11634	<b>ABR.1G-3</b>
<b>4</b>	501-11644	<b>ABR.1G-4</b>
<b>5</b>	501-11654	<b>ABR.1G-5</b>
<b>6</b>	501-11664	<b>ABR.1G-6</b>
<b>7</b>	501-11674	<b>ABR.1G-7</b>
<b>8</b>	501-11684	<b>ABR.1G-8</b>
<b>9</b>	501-11694	<b>ABR.1G-9</b>

Abr. 2 fully severed

	Article-No.	Type
<b>A</b>	501-12014	<b>ABR.2G-A</b>
<b>B</b>	501-12024	<b>ABR.2G-B</b>
<b>C</b>	501-12034	<b>ABR.2G-C</b>
<b>D</b>	501-12044	<b>ABR.2G-D</b>
<b>E</b>	501-12054	<b>ABR.2G-E</b>
<b>F</b>	501-12064	<b>ABR.2G-F</b>
<b>G</b>	501-12074	<b>ABR.2G-G</b>
<b>H</b>	501-12084	<b>ABR.2G-H</b>
<b>I</b>	501-12094	<b>ABR.2G-I</b>
<b>J</b>	501-12104	<b>ABR.2G-J</b>
<b>K</b>	501-12114	<b>ABR.2G-K</b>
<b>L</b>	501-12124	<b>ABR.2G-L</b>
<b>M</b>	501-12134	<b>ABR.2G-M</b>
<b>N</b>	501-12144	<b>ABR.2G-N</b>
<b>O</b>	501-12154	<b>ABR.2G-O</b>
<b>P</b>	501-12164	<b>ABR.2G-P</b>
<b>Q</b>	501-12174	<b>ABR.2G-Q</b>
<b>R</b>	501-12184	<b>ABR.2G-R</b>
<b>S</b>	501-12194	<b>ABR.2G-S</b>
<b>T</b>	501-12204	<b>ABR.2G-T</b>
<b>U</b>	501-12214	<b>ABR.2G-U</b>
<b>V</b>	501-12224	<b>ABR.2G-V</b>
<b>W</b>	501-12234	<b>ABR.2G-W</b>
<b>X</b>	501-12244	<b>ABR.2G-X</b>
<b>Y</b>	501-12254	<b>ABR.2G-Y</b>
<b>Z</b>	501-12264	<b>ABR.2G-Z</b>
<b>+</b>	501-12274	<b>ABR.2G-+</b>
<b>-</b>	501-12284	<b>ABR.2G--</b>
<b>0</b>	501-12604	<b>ABR.2G-0</b>
<b>1</b>	501-12614	<b>ABR.2G-1</b>
<b>2</b>	501-12624	<b>ABR.2G-2</b>
<b>3</b>	501-12634	<b>ABR.2G-3</b>
<b>4</b>	501-12644	<b>ABR.2G-4</b>
<b>5</b>	501-12654	<b>ABR.2G-5</b>
<b>6</b>	501-12664	<b>ABR.2G-6</b>
<b>7</b>	501-12674	<b>ABR.2G-7</b>
<b>8</b>	501-12684	<b>ABR.2G-8</b>
<b>9</b>	501-12694	<b>ABR.2G-9</b>

Abr. 3 fully severed

	Article-No.	Type
<b>A</b>	501-13014	<b>ABR.3G-A</b>
<b>B</b>	501-13024	<b>ABR.3G-B</b>
<b>C</b>	501-13034	<b>ABR.3G-C</b>
<b>D</b>	501-13044	<b>ABR.3G-D</b>
<b>E</b>	501-13054	<b>ABR.3G-E</b>
<b>F</b>	501-13064	<b>ABR.3G-F</b>
<b>G</b>	501-13074	<b>ABR.3G-G</b>
<b>H</b>	501-13084	<b>ABR.3G-H</b>
<b>I</b>	501-13094	<b>ABR.3G-I</b>
<b>J</b>	501-13104	<b>ABR.3G-J</b>
<b>K</b>	501-13114	<b>ABR.3G-K</b>
<b>L</b>	501-13124	<b>ABR.3G-L</b>
<b>M</b>	501-13134	<b>ABR.3G-M</b>
<b>N</b>	501-13144	<b>ABR.3G-N</b>
<b>O</b>	501-13154	<b>ABR.3G-O</b>
<b>P</b>	501-13164	<b>ABR.3G-P</b>
<b>Q</b>	501-13174	<b>ABR.3G-Q</b>
<b>R</b>	501-13184	<b>ABR.3G-R</b>
<b>S</b>	501-13194	<b>ABR.3G-S</b>
<b>T</b>	501-13204	<b>ABR.3G-T</b>
<b>U</b>	501-13214	<b>ABR.3G-U</b>
<b>V</b>	501-13224	<b>ABR.3G-V</b>
<b>W</b>	501-13234	<b>ABR.3G-W</b>
<b>X</b>	501-13244	<b>ABR.3G-X</b>
<b>Y</b>	501-13254	<b>ABR.3G-Y</b>
<b>Z</b>	501-13264	<b>ABR.3G-Z</b>
<b>+</b>	501-13274	<b>ABR.3G-+</b>
<b>-</b>	501-13284	<b>ABR.3G--</b>
<b>0</b>	501-13604	<b>ABR.3G-0</b>
<b>1</b>	501-13614	<b>ABR.3G-1</b>
<b>2</b>	501-13624	<b>ABR.3G-2</b>
<b>3</b>	501-13634	<b>ABR.3G-3</b>
<b>4</b>	501-13644	<b>ABR.3G-4</b>
<b>5</b>	501-13654	<b>ABR.3G-5</b>
<b>6</b>	501-13664	<b>ABR.3G-6</b>
<b>7</b>	501-13674	<b>ABR.3G-7</b>
<b>8</b>	501-13684	<b>ABR.3G-8</b>
<b>9</b>	501-13694	<b>ABR.3G-9</b>



Special characters available on request.

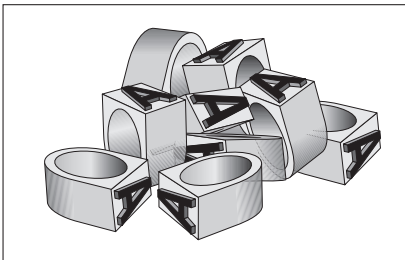


Abr. 4 fully severed

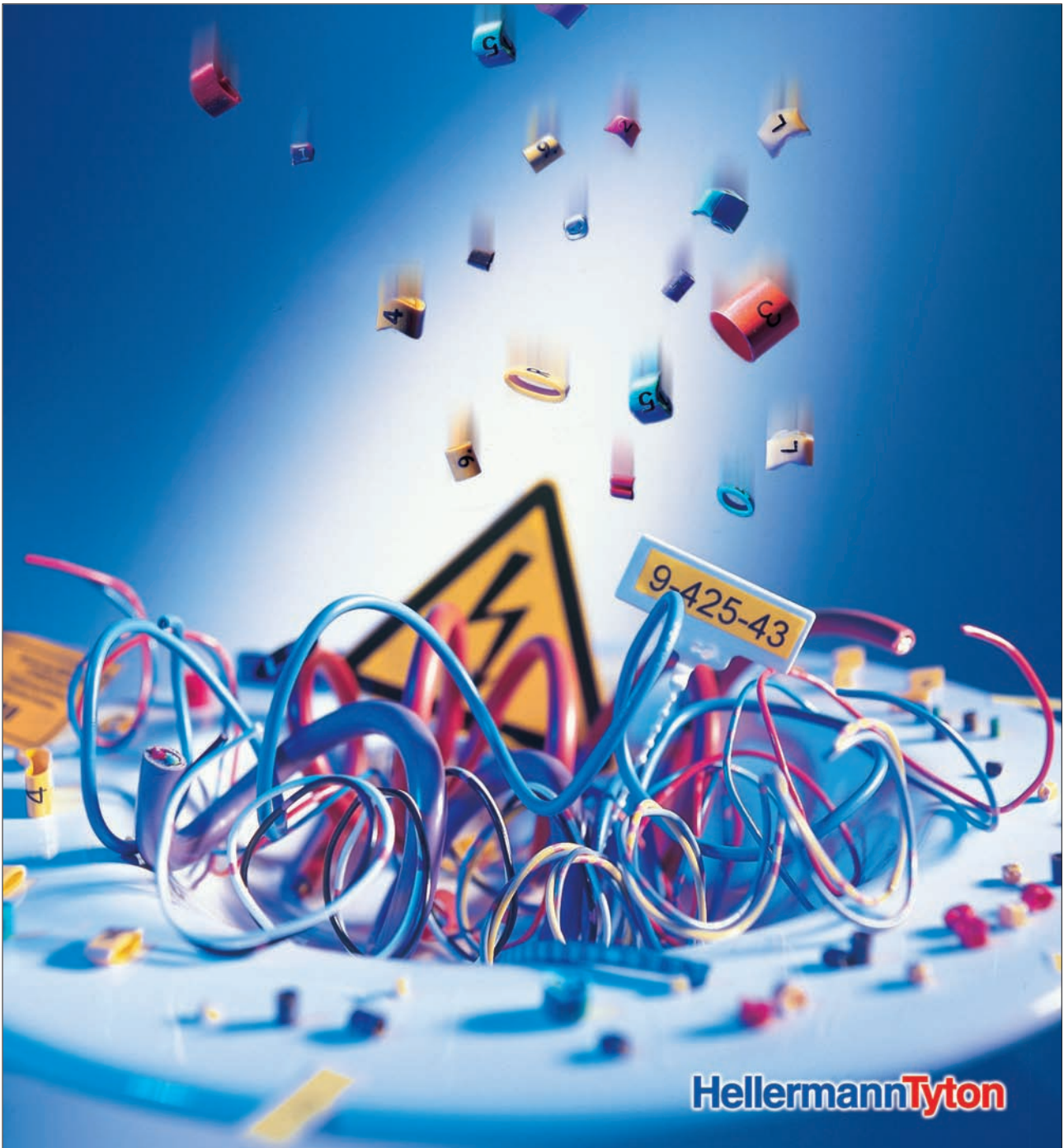
	Article-No.	Type
<b>A</b>	501-14014	<b>ABR.4G-A</b>
<b>B</b>	501-14024	<b>ABR.4G-B</b>
<b>C</b>	501-14034	<b>ABR.4G-C</b>
<b>D</b>	501-14044	<b>ABR.4G-D</b>
<b>E</b>	501-14054	<b>ABR.4G-E</b>
<b>F</b>	501-14064	<b>ABR.4G-F</b>
<b>G</b>	501-14074	<b>ABR.4G-G</b>
<b>H</b>	501-14084	<b>ABR.4G-H</b>
<b>I</b>	501-14094	<b>ABR.4G-I</b>
<b>J</b>	501-14104	<b>ABR.4G-J</b>
<b>K</b>	501-14114	<b>ABR.4G-K</b>
<b>L</b>	501-14124	<b>ABR.4G-L</b>
<b>M</b>	501-14134	<b>ABR.4G-M</b>
<b>N</b>	501-14144	<b>ABR.4G-N</b>
<b>O</b>	501-14154	<b>ABR.4G-O</b>
<b>P</b>	501-14164	<b>ABR.4G-P</b>
<b>Q</b>	501-14174	<b>ABR.4G-Q</b>
<b>R</b>	501-14184	<b>ABR.4G-R</b>
<b>S</b>	501-14194	<b>ABR.4G-S</b>
<b>T</b>	501-14204	<b>ABR.4G-T</b>
<b>U</b>	501-14214	<b>ABR.4G-U</b>
<b>V</b>	501-14224	<b>ABR.4G-V</b>
<b>W</b>	501-14234	<b>ABR.4G-W</b>
<b>X</b>	501-14244	<b>ABR.4G-X</b>
<b>Y</b>	501-14254	<b>ABR.4G-Y</b>
<b>Z</b>	501-14264	<b>ABR.4G-Z</b>
<b>+</b>	501-14274	<b>ABR.4G-+</b>
<b>-</b>	501-14284	<b>ABR.4G--</b>
<b>0</b>	501-14604	<b>ABR.4G-0</b>
<b>1</b>	501-14614	<b>ABR.4G-1</b>
<b>2</b>	501-14624	<b>ABR.4G-2</b>
<b>3</b>	501-14634	<b>ABR.4G-3</b>
<b>4</b>	501-14644	<b>ABR.4G-4</b>
<b>5</b>	501-14654	<b>ABR.4G-5</b>
<b>6</b>	501-14664	<b>ABR.4G-6</b>
<b>7</b>	501-14674	<b>ABR.4G-7</b>
<b>8</b>	501-14684	<b>ABR.4G-8</b>
<b>9</b>	501-14694	<b>ABR.4G-9</b>

Abr. 5 fully severed

	Article-No.	Type
<b>A</b>	501-15014	<b>ABR.5G-A</b>
<b>B</b>	501-15024	<b>ABR.5G-B</b>
<b>C</b>	501-15034	<b>ABR.5G-C</b>
<b>D</b>	501-15044	<b>ABR.5G-D</b>
<b>E</b>	501-15054	<b>ABR.5G-E</b>
<b>F</b>	501-15064	<b>ABR.5G-F</b>
<b>G</b>	501-15074	<b>ABR.5G-G</b>
<b>H</b>	501-15084	<b>ABR.5G-H</b>
<b>I</b>	501-15094	<b>ABR.5G-I</b>
<b>J</b>	501-15104	<b>ABR.5G-J</b>
<b>K</b>	501-15114	<b>ABR.5G-K</b>
<b>L</b>	501-15124	<b>ABR.5G-L</b>
<b>M</b>	501-15134	<b>ABR.5G-M</b>
<b>N</b>	501-15144	<b>ABR.5G-N</b>
<b>O</b>	501-15154	<b>ABR.5G-O</b>
<b>P</b>	501-15164	<b>ABR.5G-P</b>
<b>Q</b>	501-15174	<b>ABR.5G-Q</b>
<b>R</b>	501-15184	<b>ABR.5G-R</b>
<b>S</b>	501-15194	<b>ABR.5G-S</b>
<b>T</b>	501-15204	<b>ABR.5G-T</b>
<b>U</b>	501-15214	<b>ABR.5G-U</b>
<b>V</b>	501-15224	<b>ABR.5G-V</b>
<b>W</b>	501-15234	<b>ABR.5G-W</b>
<b>X</b>	501-15244	<b>ABR.5G-X</b>
<b>Y</b>	501-15254	<b>ABR.5G-Y</b>
<b>Z</b>	501-15264	<b>ABR.5G-Z</b>
<b>+</b>	501-15274	<b>ABR.5G-+</b>
<b>-</b>	501-15284	<b>ABR.5G--</b>
<b>0</b>	501-15604	<b>ABR.5G-0</b>
<b>1</b>	501-15614	<b>ABR.5G-1</b>
<b>2</b>	501-15624	<b>ABR.5G-2</b>
<b>3</b>	501-15634	<b>ABR.5G-3</b>
<b>4</b>	501-15644	<b>ABR.5G-4</b>
<b>5</b>	501-15654	<b>ABR.5G-5</b>
<b>6</b>	501-15664	<b>ABR.5G-6</b>
<b>7</b>	501-15674	<b>ABR.5G-7</b>
<b>8</b>	501-15684	<b>ABR.5G-8</b>
<b>9</b>	501-15694	<b>ABR.5G-9</b>



Special characters  
available on request.



## Pre/Post Termination Cable Markers



CABLE JOINTS, CABLE TERMINATIONS, CABLE GLANDS, CABLE CLEATS  
FEEDER PILLARS, FUSE LINKS, ARC FLASH, CABLE ROLLERS, CUT-OUTS

11KV 33KV CABLE JOINTS & CABLE TERMINATIONS  
FURSE EARTHING  
[www.cablejoints.co.uk](http://www.cablejoints.co.uk)  
**Thorne and Derrick UK**

Tel 0044 191 490 1547 Fax 0044 191 477 5371  
Tel 0044 117 977 4647 Fax 0044 117 9775582