



POPULAR ANNUAL FINANCIAL REPORT
For the fiscal year ending June 30, 2008

Introduction from County Manager



Wanda Greene,
PhD, CPA
County Manager

Dear Buncombe County Residents,

It is a pleasure to present Buncombe County's Popular Annual Financial Report (PAFR) for the fiscal year ended June 30, 2008. Providing effective and efficient government our citizens can trust is part of Buncombe County's mission. Preparing this report supports that mission by assuring fiscal accountability.

Operational accountability is a long-standing practice within the County. As we continue to look for ways to improve the overall management and performance of County Government, managing for results is a critical part of our evaluation. We strive to be customer focused, results oriented, innovative in how we deliver services and strategic in how we view programs and services.

As you read through the information contained in this report, you will notice the wide array of services and programs available to citizens through the hard work and dedication of Buncombe County employees. We realize the importance of a strong relationship between County Government and the community, and we are moving forward in pursuit of our goal to improve the quality of life for all residents of Buncombe County while running a streamlined organization.

I hope you will share my sense of pride in the many accomplishments of County Government that exemplify our commitment to public service. We could not do this job without the guidance and leadership of our Commissioners and our extremely dedicated workforce who labor to sustain the economic vigor and community spirit that is driving our progress.

This Popular Annual Financial Report is presented as a means of increasing public confidence in County government and its elected officials through easier, more user-friendly financial reporting. We welcome your reading and learning more about Buncombe County Government - together we succeed when we deliver meaningful, accountable results in a timely manner.

Fiscal Year 2008 Financial Highlights

- Buncombe County posted its highest tax collection rate to date, 99.13%, which places Buncombe County among the highest ranking North Carolina counties with a population greater than 100,000. This outstanding collection rate helps ensure the county treats citizens equitably and helps keep the tax rate as low as possible.

- Certificates of Participation and an interim loan were used to fund \$28.9 million of capital projects. These projects include (among others):

Detention Facility Expansion - The current detention facility will expand to add a total of 248 new beds and approximately 90,000 square feet of space.

Animal Shelter - Buncombe County worked with the Asheville Humane Society to co-locate facilities for a new Animal Services Center and Adoption Center. Private land was donated for the construction of these facilities. Construction will include creation of a 14,000 square foot animal shelter located adjacent to a proposed Humane Society's Adoption Center.

Parking Deck - The College Street parking deck in downtown Asheville will consist of a 261,000 square feet, seven-tier parking deck accommodating 600-630 parking spaces.

- Buncombe County maintained elite bond ratings of Aa2 and AA with Moody's and Standard & Poor's, respectively.
- Fiscal year 2007 represents the 29th consecutive year Buncombe County's Comprehensive Annual Financial Report received the Certificate of Achievement for Excellence in Financial Reporting from the Government Finance Officers Association of the United States and Canada (GFOA).

The information for this Popular Annual Financial Report (PAFR) has been taken from the County's **Comprehensive Annual Financial Report** (CAFR). The CAFR contains more detailed financial information and is available for public review on the County's website at buncombecounty.org, and in the County Finance Department at 35 Woodfin Street, 2nd Floor, Room C2500, Asheville, NC 28801.

This PAFR is designed to be user friendly. It also differs from the CAFR in that it is not audited and is not required to adhere to Generally Accepted Accounting Principles (GAAP) standards.

Buncombe County Board of Commissioners

Fiscal Year 2008

Buncombe County is governed by a five-member board of commissioners, elected at-large in partisan countywide elections. Commissioners serve four-year terms.

The primary duties of the Board include: adopting an annual budget, establishing the annual property tax rate, appointing various officials, planning for county needs and enacting local ordinances. The Board also has the authority to call bond referenda, enter into contracts and establish new programs and departments.

The Board of Commissioners meets regularly at 4:30 pm on the first and third Tuesdays of the month. They meet in room 204 on the second floor to of the County Courthouse at 60 Court Plaza in downtown Asheville.

Nathan Ramsey, Chairman



Nathan Ramsey is in his second term as Chairman of the Board. He is a thirty year resident of the Fairview Community in Buncombe County. He has a BS degree in accounting from the University of North Carolina at Asheville and a law degree from the University of Tennessee. He and his family own a dairy farm in Fairview. Nathan and his wife, Robin, live in Fairview. Chairman Ramsey currently serves on the Buncombe County Health Board, Buncombe County Audit Committee, Asheville Area Chamber of Commerce, Buncombe County Farm Bureau Board, French Broad MPO and the North Carolina Health Insurance Innovations Commission.

David Gantt, Vice Chairman



David Gantt, an attorney, is serving his third term on the Board. He is currently an active member of the Boards of Metropolitan Sewerage District, Asheville Regional Airport Authority, Eblen Charities, United Way, Asheville Buncombe Community Relations Council, Land of Sky Regional Council, and Martin Luther King, Jr. Committee. Commissioner Gantt is an advocate for education and the working people of Buncombe County.



Bill Stanley, Commissioner

A retired high school coach and principal, Bill Stanley is serving his fifth term. In addition to his local involvement in civic affairs, he is a former President of the North Carolina Association of County Commissioners and is currently serving as a member of the MPO, RPO, Land of Sky Regional Council and the Civic Center Task Force. Commissioner Stanley was recently appointed to the NC Advisory Commission on Military Affairs by Senate President Pro Tem Marc Basnight.



Carol Peterson, Commissioner

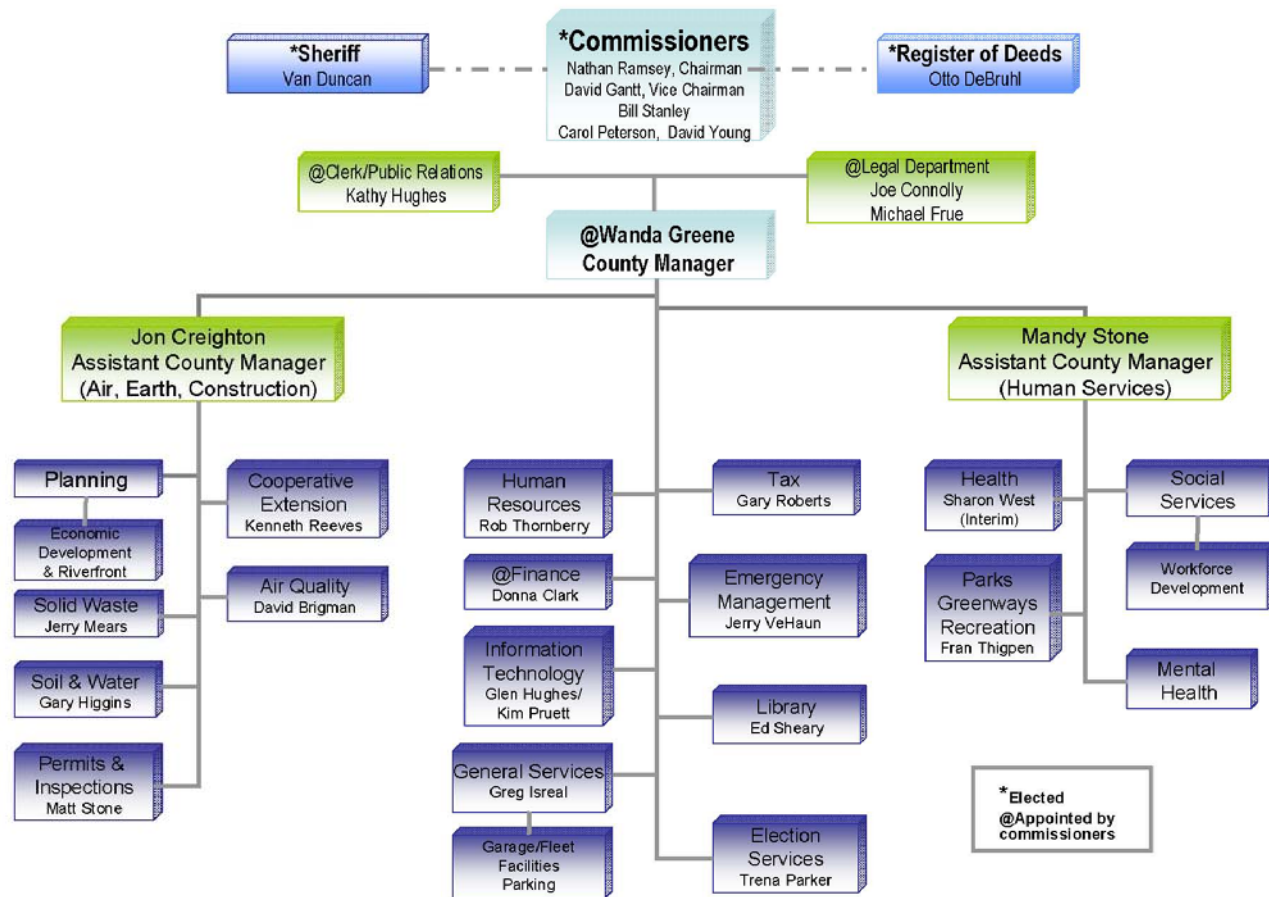
A fifth generation native of Buncombe County and a retired Director of Vocation for the Asheville City Schools, Carol Peterson is serving her first term of office. She also serves as the Vice Chair for Asheville Buncombe Technical Community College Board of Trustees, Children First, College for Seniors, UNC-A, Juvenile Crime Prevention Committee, Pack Place Board and Smart Start.



David Young, Commissioner

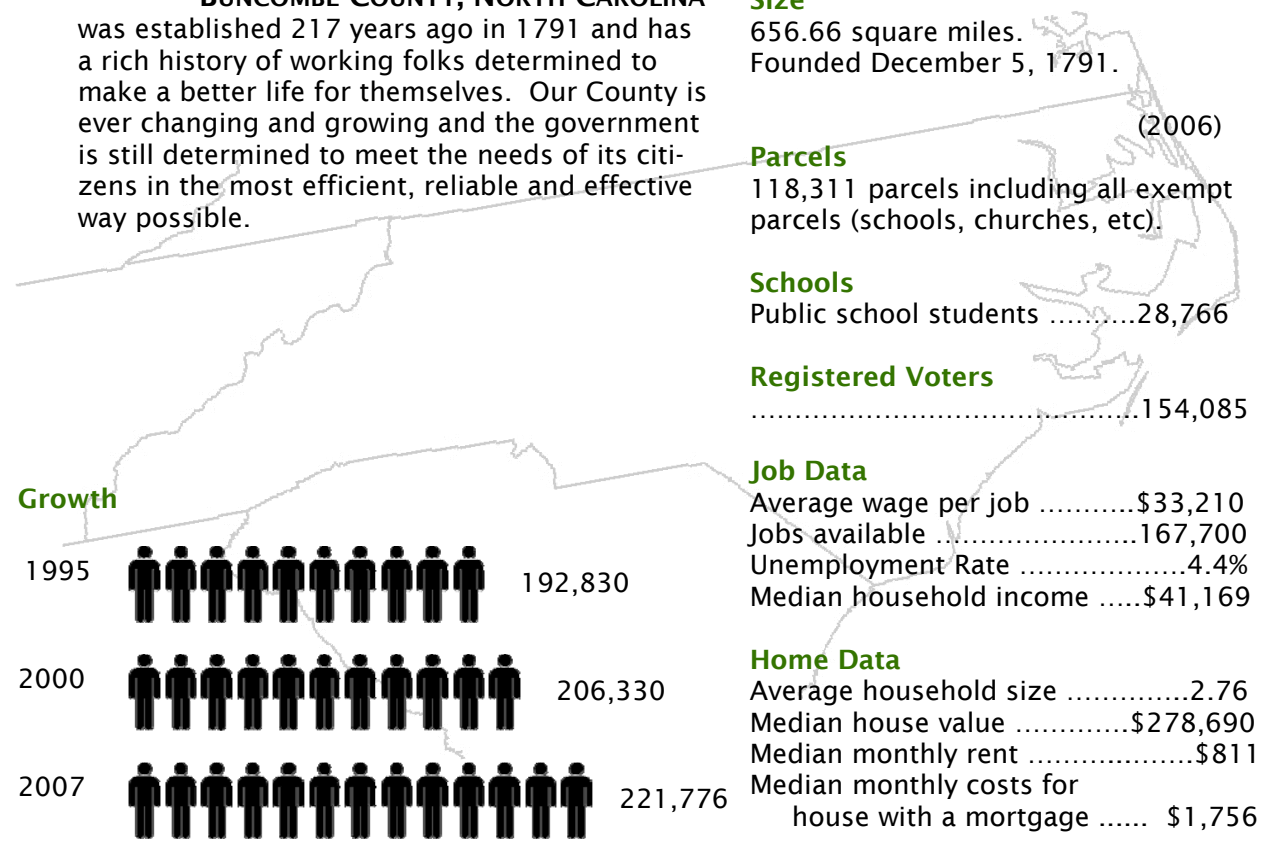
In his fourth term as Commissioner, David Young is very involved in local and regional economic development serving as the past Chairman and current member of the Economic Development Coalition, Blue Ridge Film Advisory Board, Tourism and Development Authority, and was the past chairman of the Asheville Regional Airport Authority. He is currently serving on the UNC Board of Governors and is currently serving as President of the North Carolina Association of County Commissioners. He is also part owner of Fugazy Travel.

Organizational Chart



Demographics and Statistics

BUNCOMBE COUNTY, NORTH CAROLINA was established 217 years ago in 1791 and has a rich history of working folks determined to make a better life for themselves. Our County is ever changing and growing and the government is still determined to meet the needs of its citizens in the most efficient, reliable and effective way possible.



Land
The real property in the County currently has a value of \$28.2 billion.

Size
656.66 square miles.
Founded December 5, 1791.

Parcels
118,311 parcels including all exempt parcels (schools, churches, etc).

Schools
Public school students28,766

Registered Voters
.....154,085

Job Data
Average wage per job\$33,210
Jobs available167,700
Unemployment Rate4.4%
Median household income\$41,169

Home Data
Average household size2.76
Median house value\$278,690
Median monthly rent\$811
Median monthly costs for house with a mortgage \$1,756

Median Age
.....39.6

Gender
Males48.3%
Females51.7%

Density per sq mile
.....333.6

Key Businesses

County Government can be divided into three main business functions:

Education

The County's education function is made up of Buncombe County Schools, Asheville City Schools, and Asheville-Buncombe Technical Community College. Funding for public education is a major responsibility of County government. The County's appropriations comprise only a small portion of the required funds with the State of North Carolina providing most of the funding.

Education accounts for 26.1% of the total governmental activities expenses or \$75.9 million

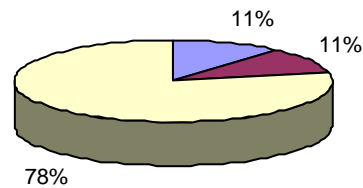
Current/Capital Appropriations for Education
Fiscal Years 2002 to 2009
(in millions)

Fiscal Year	City Schools	County Schools	A-B Tech	Educ Total	Incr (Decr)
2009	8.14	54.62	8.03	70.79	7.9%
2008	7.62	50.36	7.63	65.62	2.2%
2007	7.71	47.14	9.38	64.23	13.9%
2006	6.70	43.20	6.49	56.39	5.9%
2005	6.60	40.80	5.88	53.27	5.7%
2004	6.34	38.67	5.38	50.39	5.9%
2003	6.02	36.66	4.92	47.60	1.2%
2002	5.98	36.40	4.65	47.03	1.5%

As evidenced by the education appropriations chart to the right, Buncombe County significantly increases the amount of money set aside for education each year. Your local government remains committed to a quality education for all students.

Education Approved Budget FY09

■ City Schools ■ AB Tech □ County Schools



Human Services

County Health Center - adult and children primary care; immunizations, dental clinic, environmental health.

Department of Social Services - adult and children protective and economic services; work first employment and family services.

Transportation (Mountain Mobility) - serves a wide variety of organizations as well as provide general public transportation services outside the City of Asheville. Mountain Mobility operates 39 vans and two small buses and provided about 500 passenger trips every week in 2008.

Child Care Services - child care placement and administration of three Child Care Centers (AB Tech Child Care Center, Community Child Development Center and Valley Child Development Center).

Human Services accounts for 31% of the total governmental activities expenses or \$90.1 million

Public Safety

Sheriff's Office includes Crime Stoppers, Buncombe County Anti-Crime Task Force (BCAT), Patrol and Investigation, Court Security, Detention Center and Satellite jail facility. The Detention Center can house 356 inmates. The Satellite jail can house up to 80 inmates and the new Detention Center annex can house 248 inmates.

Emergency Medical Services includes 911 communication and emergency ambulance transportation and medical care services.

Identification Bureau, Central Data Entry and Criminal Justice Information System provide a centralized database system of complete criminal history information on all persons arrested or cited in the County.

Public Safety accounts for 23.4% of the governmental activities expenses or \$68 million

Capital Improvement Plan

Fiscal Years 2009-2013



FY Funding Needed	Description	Total Est. Cost	Other Funding	Source	Estimated County Dollars Needed	Pay-As-You Go	Annual Debt Service	Estimated Annual Operating Costs Increase
FY 2009	In conjunction with Coxie Avenue Parking Deck, purchase additional land and expand/renovate DSS building.	\$ 20,000,000			\$ 20,000,000		\$ 1,340,735	
FY 2009	Emergency vehicle operating training facility and live burn rescue facility	\$ 20,000,000			\$ 20,000,000		\$ 1,340,735	
FY 2009	General capital repair and renovation for multiple buildings including exterior repairs, signage, interior renovations, paving, and equipment replacement.	\$ 1,085,000			\$ 1,085,000		\$ 182,416	
FY 2009	Heart monitors	\$ 280,000			\$ 280,000		\$ 63,161	\$ -
FY 2009	Telephone system, voice mail, integrated msg; IPCS - Interoperability Communications; Video Conferencing & Collaboration; Redundant Communication Fiber links to Key County Buildings	\$ 1,950,000			\$ 1,950,000		\$ 356,083	\$ 400,000
FY 2009	Electronic medical record system.	\$ 300,000			\$ 300,000		\$ 67,673	\$ 42,000
FY 2009	Limited Two Factor Authentication.	\$ 150,000			\$ 150,000		\$ 33,837	\$ -
FY 2009	Visual Fire System	\$ 500,000	\$ 225,000	City of Asheville	\$ 275,000		\$ 112,788	\$ -
FY 2009	Parks Improvement Projects - Lake Julian (dock, slips, boat launch, and storage shelter); parks and pools (renov of bathroom/locker room; surfacing; replace signage; add playgrounds, picnic tables, grills, and benches); Greenways	\$ 550,000			\$ 550,000	\$ 300,000	\$ 42,032	
FY 2009	Baseball field lighting upgrades at Hominy Valley and North Buncombe Parks.	\$ 350,000			\$ 350,000		\$ 58,844	
FY 2009	Karpen Field improvements - add drainage system, bathrooms, expand parking/entrance area, install playground, add 1/4 mi. walking track, grills, benches, and picnic tables.	\$ 400,000			\$ 400,000		\$ 67,250	
FY 2009	Landfill - construction and debris (C&D) area	\$ 750,000	\$ 750,000	Enterprise Fund	\$ -			
FY 2009	Pictometry	\$ 350,000	\$ 350,000	911 Fund	\$ -			\$ -
FY 2009 Total		\$ 46,665,000	\$ 1,325,000		\$ 45,340,000	\$ 300,000	\$ 3,665,554	\$ 442,000
FY 2010	Document Imaging Upgrade, Products and Services	\$ 500,000			\$ 500,000		\$ 114,259	\$ 100,000
FY 2010	Court Renovations	\$ 80,000,000			\$ 80,000,000		\$ 5,362,938	
FY 2010	Acquire land and build aquatics facility with indoor pool, exercise room; gym; meeting room for programming and community events and offices for Parks and Recreation staff; build Softball complex - 8 fields; locker rooms; concession stand, bleacher seating, parking and artificial turf sports field.	\$ 30,000,000			\$ 30,000,000		\$ 2,115,484	
FY 2010	Electronic pollbooks	\$ 480,000	\$ 225,000	State Election Bd	\$ 255,000	\$ 255,000		\$ -
FY 2010	Future Disposal	\$ 4,500,000	\$ 4,500,000	Enterprise Fund	\$ -	\$ -	\$ -	\$ -
FY 2010	Aerial Orthophotos	\$ 500,000	\$ 500,000	911 Fund	\$ -			
FY 2010 Total		\$ 115,980,000	\$ 5,225,000		\$ 110,755,000	\$ 255,000	\$ 7,592,681	\$ 100,000
FY 2011	Build replacement branch library on Tunnel Rd	\$ 2,000,000			\$ 2,000,000		\$ 173,050	\$ -
FY 2011	Expand current library into space currently occupied by Post Office. Would increase from 4,800 to 9,000 square feet.	\$ 500,000			\$ 500,000		\$ 88,526	
FY 2011	Build outdoor pool in TC Roberson district.	\$ 3,000,000			\$ 3,000,000		\$ 239,018	
FY 2011	Sports Park Field improvements	\$ 2,000,000			\$ 2,000,000		\$ 159,345	
FY 2011 Total		\$ 7,500,000	\$ -		\$ 7,500,000	\$ -	\$ 659,939	\$ -
FY 2012	Public Health - Patient Management Software	\$ 400,000			\$ 400,000		\$ 93,784	\$ 80,000
FY 2012	Sweeten Creek Branch	\$ 2,000,000			\$ 2,000,000		\$ 173,050	
FY 2012 Total		\$ 2,400,000	\$ -		\$ 2,400,000	\$ -	\$ 266,834	\$ 80,000
FY 2013 Total	Finance and Health server replacement	\$ 750,000			\$ 750,000		\$ 175,846	\$ -
FY 2013 Total		\$ 750,000	\$ -		\$ 750,000	\$ -	\$ 175,846	\$ -
FY 2009-2013 Total		\$ 173,295,000	\$ 6,550,000		\$ 166,745,000	\$ 555,000	\$ 12,360,854	\$ 622,000



Overview of Buncombe County Finances

Table 1, the Statement of Net Assets, shows what the government has in relation to assets and liabilities.

Table 2, the Statement of Activities (next page), shows what the government does in terms of Governmental Activities (legislative, executive and judicial activities) and Business-Type Activities, which are typically provided on a fee-for-service basis.

TABLE 1: Statement of Net Assets (in millions)

	Governmental Activities		Business Type Activities		Total	
	2008	2007	2008	2007	2008	2007
Current and other assets	\$ 154.0	\$ 152.3	\$ 32.8	\$ 23.1	\$ 186.8	\$ 175.4
Capital assets	112.6	98.8	49.9	41.9	162.5	140.7
Total assets	266.6	251.1	82.7	65.0	349.3	316.1
Long-term liabilities outstanding	184.2	187.3	33.8	20.3	218.0	207.6
Other liabilities	19.4	18.2	2.3	0.9	21.7	19.1
Total liabilities	203.6	205.5	36.1	21.2	239.7	226.7
Net assets:						
Invested in capital assets, net of related debt	66.9	63.8	30.5	28.6	97.4	92.4
Restricted	1.4	1.3	9.0	6.4	10.4	7.7
Unrestricted	(5.3)	(19.5)	7.1	8.8	1.8	(10.7)
Total net assets	\$ 63.0	\$ 45.6	\$ 46.6	\$ 43.8	\$ 109.6	\$ 89.4

TABLE 2: Statement of Activities (in millions)

	Governmental Activities		Business Type Activities		Total	
	2008	2007	2008	2007	2008	2007
Revenues:						
Program Revenues:						
Charges for services	\$ 35.1	\$ 34.2	\$ 8.4	\$ 8.2	\$ 43.5	\$ 42.4
Operating grants and contributions	47.8	44.2	0.3	0.3	48.1	44.5
Capital grants and contributions	17.6	16.9	0.1	-	17.7	16.9
General Revenues:						
Property taxes	157.6	152.8	-	-	157.6	152.8
Other taxes	45.6	43.9	-	-	45.6	43.9
Other	6.5	7.5	2.1	1.4	8.6	8.9
Total Revenues	310.2	299.5	10.9	9.9	321.1	309.4
Expenses:						
General government	23.4	22.5	-	-	23.4	22.5
Public safety	68.0	58.2	-	-	68.0	58.2
Economic and physical development	18.6	14.7	-	-	18.6	14.7
Human services	90.1	81.5	-	-	90.1	81.5
Culture and recreation	8.1	6.9	-	-	8.1	6.9
Education	75.9	91.9	-	-	75.9	91.9
Interest on long-term debt	6.3	6.7	-	-	6.3	6.7
Solid waste disposal	-	-	7.7	6.9	7.7	6.9
Other	-	-	3.4	3.2	3.4	3.2
Total Expenses	290.4	282.4	11.1	10.1	301.5	292.5
Increase (decrease) in net assets before transfers, contributions, and special item	19.8	17.1	(0.2)	(0.2)	19.6	16.9
Transfers, contributions, and special item	(3.0)	(2.0)	3.0	2.0	-	-
Increase (decrease) in net assets	16.8	15.1	2.8	1.8	19.6	16.9
Net assets, beginning of year	45.6	31.0	43.8	42.0	89.4	73.0
Prior period adjustment	0.6	(0.5)	-	-	0.6	(0.5)
Net assets, end of year	\$ 63.0	\$ 45.6	\$ 46.6	\$ 43.8	\$ 109.6	\$ 89.4

Overview of Buncombe County Finances Cont.

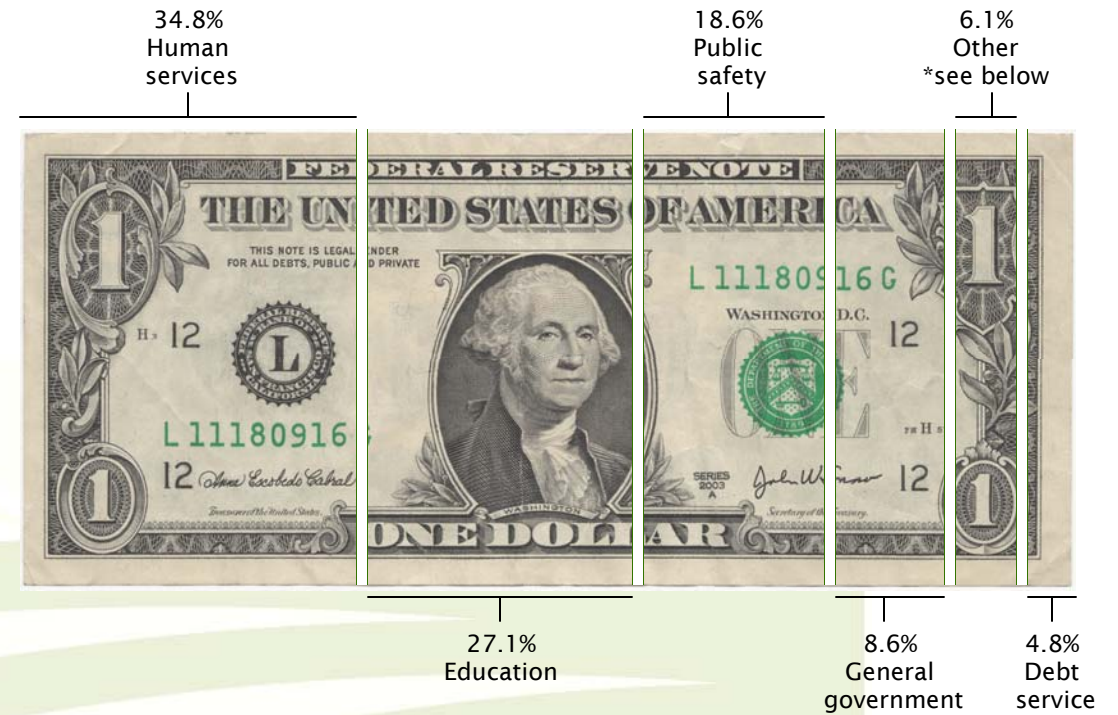
Where does the money come from? FY08 General Fund Revenue Sources

The general fund serves as the chief operating fund for Buncombe County government.



Ad valorem taxes	\$143,650,901
Local option sales taxes	40,446,673
*Other taxes and licenses	5,974,706
*Unrestricted intergovernmental	634,260
Restricted intergovernmental	40,264,027
*Permits and fees	1,685,014
Sales and services	18,794,523
*Investment earnings	3,988,340
*Miscellaneous	1,112,329
Total Revenues	\$256,550,773

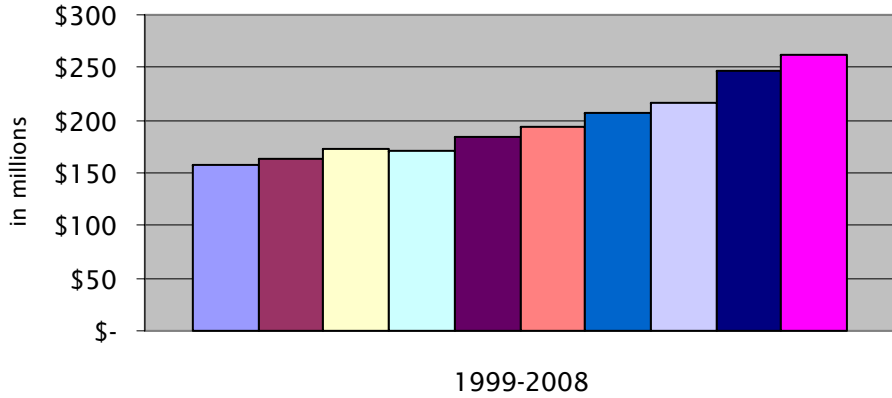
Where does the money go? FY08 General Fund Expenditures



General government	\$ 21,047,852
Public safety	45,520,526
*Economic and physical development	7,538,876
Human services	84,888,420
*Cultural and recreational	7,304,597
Education (County schools, city schools, AB Tech)	66,171,518
Debt service	11,807,902
Total Expenditures	\$244,279,691

Trends

General Fund Revenues

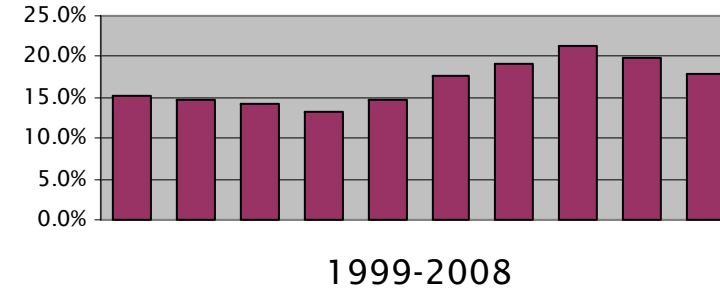


The general fund is the chief operating fund of the County.

A "fund" is a grouping of related accounts that is used to maintain control over resources that have been earmarked for specific activities or objectives.

Buncombe County, like all other governmental entities in North Carolina, uses fund accounting to ensure and demonstrate compliance with finance-related legal requirements.

Percentage of Unreserved Fund Balance

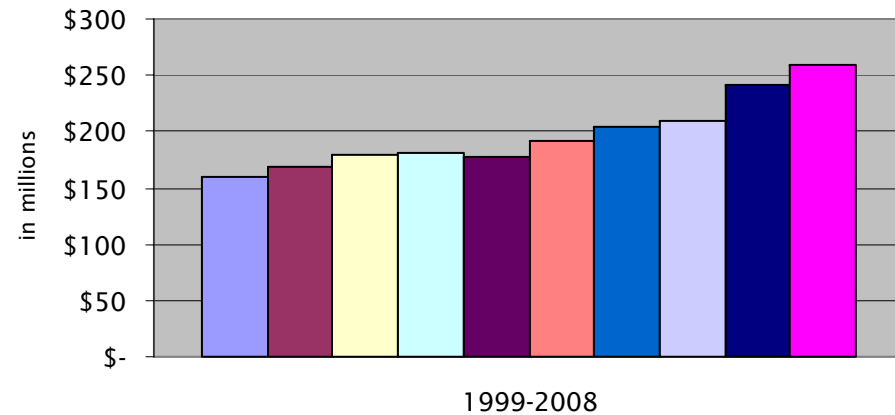


Fund balance is the difference between fund assets and fund liabilities in a governmental fund.

Buncombe County policy is to maintain unreserved fund balance (available for appropriation) at or above 15%. This is the level management considers adequate to meet the needs of the County during unforeseen events and to prevent cash flow shortfalls during periods of low tax collections.

Unreserved fund balance represents 17.8% of total General Fund expenditures and transfer for 2008.

General Fund Expenditures



The County adopts an annual budget for its General Fund as required by the General Statutes. The budget is a legally adopted document that incorporates input from the citizens of the County, the management of the County, and the decisions of the Board of Commissioners about which services to provide and how to pay for them.

Principal Property Taxpayers

Taxpayer	2008		1999	
	Taxable Assessed Value	Percentage of Total Taxable Assessed Value	Taxable Assessed Value	Percentage of Total Taxable Assessed Value
Progress Energy / CP & L	\$ 401,042,785	1.47%	\$ 189,372,733	1.51%
Ingles Markets, Inc.	149,177,221	0.55%	109,309,820	0.87%
Sonopress, Inc.	112,953,270	0.41%	71,157,630	0.57%
Jack Tar Hotels (AKA Grove Park)	102,511,800	0.38%	65,361,900	0.52%
The Cliffs at Walnut Cove LLC	99,818,300	0.37%		
Biltmore Company	90,989,510	0.33%	61,339,950	0.49%
Bellsouth Telephone Co.	90,154,327	0.33%	109,372,733	0.87%
Asheville LLC	75,782,130	0.28%		
Southeastern Container	71,602,090	0.26%	85,546,200	0.68%
Borgwarner Turbo Systems	69,049,950	0.25%		
BASF Corporation			75,666,292	0.60%
ITT Automotive			38,108,300	0.30%
RBR & ST			60,652,080	0.48%
Total	\$ 1,263,081,383	4.63%	\$ 865,887,638	6.90%
Total Overall Valuation	\$ 27,251,353,518		\$ 12,541,240,596	

Outstanding Debt

Last Ten Fiscal Years
(amounts expressed in thousands, except per capita amount)

Fiscal Year	Total Debt	Personal Income	Percentage of Personal Income	Population	Per Capita	Assessed Valuation	Percentage of Assessed Valuation
1999	139,769	5,235,973	2.67%	195,000	717	12,528,705	1.12%
2000	134,511	5,524,659	2.43%	196,000	686	13,000,269	1.03%
2001	158,092	5,629,127	2.81%	206,000	767	13,419,502	1.18%
2002	150,089	5,671,946	2.65%	212,000	708	13,777,912	1.09%
2003	157,649	5,681,883	2.77%	215,000	733	17,095,153	0.92%
2004	160,738	6,047,658	2.66%	216,000	744	17,496,502	0.92%
2005	176,097	6,585,970	2.67%	218,000	808	18,034,880	0.98%
2006	210,278	6,988,421	3.01%	220,159	955	19,105,553	1.10%
2007	190,690	N/A	N/A	224,267	850	26,181,099	0.73%
2008	193,378	N/A	N/A	N/A	N/A	27,258,520	0.71%

- 72 percent of the outstanding debt is for Buncombe County and Asheville City Schools and AB Tech.
- Debt as a percentage of personal income is low compared to other NC Counties and Cities.
- Debt per capital below \$1000 is considered low.
- Debt per assessed valuation below 6% is considered low.

Bond Ratings

Rating agencies are an independent source of information and analysis for capital markets. A bond rating assigned by the rating agencies is an independent assessment of relative credit risk associated with purchasing and holding a particular bond, and the likelihood that the obligation will be repaid. The higher the bond rating the lower the credit risk to the investor and the lower the cost of borrowing. Buncombe County holds an Aa2 rating from Moody's and an AA rating for Standard & Poor's. The following chart illustrates where the County's rating (underlined below) fall within the rating scale of the particular agency:

Moody's
(ranges from a high of Aaa to a low of C)
Aaa Best Quality
Aa1, Aa2, Aa3 High quality by all standards

Standard & Poor's
(ranges from a high of AAA to a low of D)
AAA Highest quality; extremely strong capacity to pay
AA (+ or -) High quality; very strong capacity to pay

Buncombe County Service Directory

Air Quality Agency 250-6777	Sheriff 255-5555	City of Asheville 251-1122
Burning Control..... 250-6777	Civil Process 250-4410	Police 259-5870
BCTV (County Government Channel)..... 250-4107	Crime Stoppers 255-5050	Fire/Rescue 259-5636
..... 250-4107	Crime Prevention 250-4547	Garbage Pickup 259-5857
Child Care Services..... 250-6700	Detention Center (Jail) 250-4550	Mayor 259-5600
City/County ID Bureau 250-4665	Inmate Booking 250-4571	Parks & Festivals..... 259-5800
Background Checks 250-4661	Senior Reassurance..... 250-4491	Water billing 251-1122
Clerk to the Board 250-4105	Warrants 250-4468	Water leaks 259-5975
(of Commissioners)..... 250-4105	Social Services 250-5500	Council on Aging 277-8288
Cooperative Extension 255-5522	Administration 250-5700	Court Related Matters:
County Commissioners 250-4001	Adult Services 250-5814	Clerk of Court..... 232-2600
COUNTY JOBLINE 250-4183	Child Support Enforcement..... 232-1416	Day Reporting Center..... 250-4281
County Manager..... 250-4100	Children/Family Services..... 250-5822	District Attorney..... 232-2500
Election Services 250-4200	Food Assistance 250-5500	Estates and Probate 232-2696
Emergency Services 255-5631	Health Choice 250-5939	Jury Duty..... 232-2706
Emergencies 911	Medicaid 250-5500	Magistrate..... 250-4690
Erosion Control 250-4848	Protective Services Intake:	Public Defender 232-2595
Finance 250-4130	Adults..... 250-5800	Department of Labor..... 299-8232
Fire Marshal 255-5087	Children..... 250-5900	Dept of Transportation (DOT) 258-2741
GIS Property Information System 250-6860	Veterans Services..... 250-5726	Driver's License (Tunnel Road) 298-4544
Health Center 250-5000	Work First Employment..... 250-5500	(Patton Avenue) 251-6065
Dental Care 250-5011	Workforce Development 250-4760	Eblen Foundation 255-3066
Disease Control/Immunization..... 250-5109	Work Permit 250-5500	Employment Security Com 251-6200
Environmental Health 250-6900	Soil and Water Conservation..... 250-4785	Federal Courthouse..... 771-7200
Health Promotion 250-6985	Solid Waste 250-5460	Governor's Western Office..... 251-6160
Pharmacy 250-5233	Environmental Control..... 250-5461	Housing Authority..... 258-1222
Primary Care 250-5000	Household Hazardous Waste 250-5462	IRS..... 1-800-829-1040
Restaurant/Septic Inspection 250-6900	Junk Cars/Mobile Home Removal	License Tag Office (Tunnel Road)..... 252-8526
Water Testing 250-6900 250-5470	(Smoky Park Hwy)..... 667-2104
WIC/Nutrition 250-5170	Landfill..... 250-5462	Metropolitan Sewerage District 255-0061
JobLink..... 250-4761	Transfer Station..... 250-6205	Road Maintenance/Repair
Libraries:	Trash Disposal (GDS)..... 253-3929	In the County
Pack Memorial (Main) 250-4700	Street Addressing (Planning)..... 250-4845	NC Dept of Transportation 298-0390
TDD for hearing impaired..... 250-4718	Tax Department:	City of Asheville 259-5850
Renewal Line..... 251-4998	Business Personal Property..... 250-4930	Town of Weaverville 645-0606
Mountain Mobility..... 258-0186	Collections 250-4910	Town of Montreat..... 669-8002
Mountain Area JobLink 250-4761	Land Records 250-4970	Town of Blk Mountain..... 669-9102
Parks & Recreation 250-4260	Personal Property 250-4920	Town of Woodfin 253-4887
Permits/Inspections 250-5360	Real Estate 250-4940	Town of Biltmore Forest..... 274-0824
Personnel 250-4166	Transportation (Mtn Mobility) 258-0186	Schools (Asheville City)..... 350-7000
Planning 250-4830	OTHER USEFUL NUMBERS	(Buncombe County) 255-5921
Pre-trial Services..... 250-6294	Animal Control (City)..... 259-5872	Closing Hotline 776-8044
Purchasing..... 250-4130	(County)..... 253-1195	Social Security 251-9941
Register of Deeds 250-4300	Dead Animals (City) 251-1122	State Highway Patrol 298-4256
Recordings:	(County) (only in roadways)..... 298-2741	State Revenue 667-0597
Deeds, Deeds of Trust & Other Papers	Better Business Bureau..... 253-2392	Streets and Roads (DOT)..... 298-2741
..... 250-4300	Business License (City) 259-5595	Street Addressing (County) 250-4845
Plats & Uniform Commercial Code Rec's	(NC)..... 1-800-228-8443	(City)..... 259-5850
..... 250-4302	Chamber of Commerce..... 258-6101	United Way's 2-1-1..... 211
Vital Records:	Charter Cable 209-2257	US Postal Service 257-4198
Birth & Death Certificates 250-4301	Child Support Enforcement..... 232-1416	Zoning (City)..... 259-5831
Marriage License & Certificates..... 250-4301		(County)..... 250-4830
Notary Publics 250-4300		



Buncombe County Department of Finance

828.250.4130

Visit our website

buncombecounty.org