

Distributed by: BEST MATERIALS ®
Ph: 800-474-7570, 602-272-8128 Fax: 602-272-8014
www.BestMaterials.com Email: Sales@BestMaterials.com

Industrial Solutions Guide

Banding and Strapping Solutions



FACILITIES

MUNICIPAL

TRAFFIC

UTILITIES



BAND-IT®
Engineered Fastening Solutions



TABLE OF CONTENTS

Band & Buckle Systems



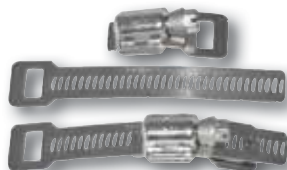
Pg. 5



Pg. 6



Pg. 14



Pg. 19



Pg. 20



Pg. 22

BAND-IT® Band & Buckle.....	5
COLOR-IT®.....	6
VALU-STRAP™.....	7
Galvanized Carbon Steel Band & Buckle.....	8
304, 316, 317L, Monel®.....	9
All Purpose Band.....	10
Band & Buckle Kits.....	11
Brack-Its & Mounting Hardware.....	12
Ultra-Lok® Band and Buckle.....	14
BAND-FAST®.....	16
Adjustable Banding Systems.....	19
Identification.....	20
Easy Read.....	21
Tools.....	22
Metals Data.....	24



General Use

BAND-IT Band

- 201 SS, bright annealed finish with a combination of high strength and quality appearance
- Offers good resistance to oxidation and many moderate corrosive agents
- EASY SCALE - Patented imprint on the band to quickly determine band length
- Durable plastic tote dispensers available

COLOR-IT®

- 12 stocked colors
- Speciality colors available upon request

Giant Band

- The widest and thickest band
- Available in 201 SS bright annealed
- Application Tools: C00369 (for 3/4" band only), and G40269

VALU-STRAP™, VALU-STRAP Plus™, and Valuband

- Economical band suitable for light duty applications
- Thickness: 0.015", 0.020", 0.025"
- Application Tools: C00169, C00369, C07569, C08569, C40099 and J02069

Galvanized Carbon Steel Band

- Utilized for low cost and non corrosive applications
- Good strength
- Application Tools: C00169, C00369, C07569, C08569, and C40099

Corrosion Resistant

304 Stainless Steel Band

- Band suitable for light duty applications
- Good corrosion resistance in fresh water and industrial atmospheres
- Application Tools: C00169, C00369, C07569, C08569, and C40099

316 Coated & Uncoated Stainless Steel Band

- Superior corrosion resistance in typical atmospheres and fresh water
- Coated band can be used in salt spray applications. Available with a non-toxic polymer coating (PPA 571) that produces low smoke and is halogen free
- Application Tools for coated: C07569, C08569, and C40099
- Application Tools for uncoated: C00169, C00369, C07569, C08569, and C40099

317L Stainless Steel Band

- Superior corrosion resistance in industrial and marine atmospheres, salt water, and mild chemicals
- Application Tools: C00169, C00369, and C40099

Monel® 400 Band

- Superior corrosion resistance in marine, salt water, and harsh chemical environments
- Application Tools: C00169, C00369, C07569, C08569 and C40099

Special Purpose

All Purpose Band

- Evenly spaced holes allow fastening with screw or nut and bolt
- Available with a non-toxic polymer coating (PPA 571) that produces low smoke and is halogen free



General Use Band & Buckle

Type 201 Stainless Steel

This is the standard choice of BAND-IT products, offering very high strength, clean appearance and good resistance to oxidation and weathering. This non-magnetic material is the choice for municipal and industrial markets.

BAND-IT® Band 201 Stainless Steel

Part No.	Material	Width		Thickness		Average Breaking Strength (lbs)	Package Quantity	Weight	
		in	mm	in	mm			lbs	kg
201 Stainless Steel BAND-IT® Band									
C20299	201 SS	.25	6.4	0.020	0.51	500	100'/Roll	1.7	0.7
C20399	201 SS	.375	9.6	0.025	0.64	900	100'/Roll	3.2	1.5
C203Y9	201 SS	.375	9.6	0.025	0.64	900	Yellow Tote 100'/Roll	3.6	1.6
C20499	201 SS	.5	12.7	0.030	0.76	1500	100'/Roll	5.1	2.3
C204B9	201 SS	.5	12.7	0.030	0.76	1500	Blue Tote 100'/Roll	5.5	2.5
C20599	201 SS	.675	15.9	0.030	0.76	1875	100'/Roll	6.4	2.9
C205G9	201 SS	.675	15.9	0.030	0.76	1875	Green Tote 100'/Roll	6.8	3.1
C20699	201 SS	.75	19.1	0.030	0.76	2250	100'/Roll	7.7	3.5
C206R9	201 SS	.75	19.1	0.030	0.76	2250	Red Tote 100'/Roll	8.2	3.7
BAND-IT® Buckle Ear-Lokt Style									
C25299**	SS	.25	6.4				100/Box	0.3	0.1
C25399	SS	.375	9.6				100/Box	0.8	0.4
C25499	SS	.5	12.7				100/Box	2.1	1.0
C25599	SS	.675	15.9				100/Box	2.4	1.1
C25699	SS	.75	19.1				100/Box	3.7	1.7

** Clip Style

Tools to be used with this product: C00169, C00369, C07569, C40099 & J02069* (*The J02069 can be used with 3/8" maximum width product).

Giant Band 201 Stainless Steel

Part No.	Material	Width		Thickness		Average Breaking Strength (lbs)	Package Quantity	Weight	
		in	mm	in	mm			lbs	kg
Giant Band									
G43099*	201 SS	.75	19.1	0.044	1.10	3300	100'/Roll	11.6	5.4
G43199	201 SS	1.0	25.4	0.044	1.10	4400	100'/Roll	13.7	6.4
G43299	201 SS	1.25	31.8	0.044	1.10	5500	100'/Roll	17.2	8.0
Giant Buckle Ear-Lokt Style									
G44099	SS	.75	19.1				25/Box	1.8	0.8
G44199	SS	1.0	24.4				25/Box	2.4	1.1
G44299	SS	1.25	31.8				25/Box	3.2	1.4

*C00369 tool to be used for 3/4"

Tools to be used with this product: G40269.

Scru-Lokt Buckle Stainless Steel

Part No.	Material	Width		Package Quantity	Weight	
		in	mm		lbs	kg
Stainless Steel Scru-Lokt Buckle						
C72099	301 SS 1/4 Hard	.25	6.4	50/Box	0.3	0.1
C72299	301 SS 1/4 Hard	.375	9.6	50/Box	0.5	0.2
C72499	301 SS 1/4 Hard	.5	12.7	50/Box	0.5	0.2
C72599	201 SS	.675	15.9	50/Box	0.8	0.4
C72699T	201 SS	.75	19.1	50/Box	0.9	0.4

BAND-IT reserves the right to substitute material with equal or better corrosion resistance and/or mechanical specifications.



General Use Band & Buckle

Roll Band with COLOR-IT®

Part No.	Material	Width		Thickness		Package Quantity	Weight		Color	RAL#
		in	mm	in	mm		lbs	kg		
Roll Band with COLOR-IT® - Polyester										
C204C9-P000	201 SS	.5	12.7	0.030	0.76	100'/Roll	5.1	2.3	White	9016
C204C9-P100	201 SS	.5	12.7	0.030	0.76	100'/Roll	5.1	2.3	Red	3001
C204C9-P200	201 SS	.5	12.7	0.030	0.76	100'/Roll	5.1	2.3	Orange	2008
C204C9-P300	201 SS	.5	12.7	0.030	0.76	100'/Roll	5.1	2.3	Yellow	1018
C204C9-P302	201 SS	.5	12.7	0.030	0.76	100'/Roll	5.1	2.3	Tan	1001
C204C9-P400	201 SS	.5	12.7	0.030	0.76	100'/Roll	5.1	2.3	Green	6032
C204C9-P500	201 SS	.5	12.7	0.030	0.76	100'/Roll	5.1	2.3	Blue	5002
C204C9-P550	201 SS	.5	12.7	0.030	0.76	100'/Roll	5.1	2.3	Lt. Blue	5012
C204C9-P600	201 SS	.5	12.7	0.030	0.76	100'/Roll	5.1	2.3	Purple	4008
C204C9-P700	201 SS	.5	12.7	0.030	0.76	100'/Roll	5.1	2.3	Gray	7036
C204C9-P800	201 SS	.5	12.7	0.030	0.76	100'/Roll	5.1	2.3	Brown	8002
C204C9-P900	201 SS	.5	12.7	0.030	0.76	100'/Roll	5.1	2.3	Black	9004
C206C9-P900	201 SS	.75	19.1	0.030	0.76	100'/Roll	7.6	3.4	Black	9004
C14599-P000	201 SS	.675	15.9	0.025	0.64	100'/Roll	5.2	2.3	White	9016
C14599-P100	201 SS	.675	15.9	0.025	0.64	100'/Roll	5.2	2.3	Red	3001
C14599-P200	201 SS	.675	15.9	0.025	0.64	100'/Roll	5.2	2.3	Orange	2008
C14599-P300	201 SS	.675	15.9	0.025	0.64	100'/Roll	5.2	2.3	Yellow	1018
C14599-P302	201 SS	.675	15.9	0.025	0.64	100'/Roll	5.2	2.3	Tan	1001
C14599-P400	201 SS	.675	15.9	0.025	0.64	100'/Roll	5.2	2.3	Green	6032
C14599-P500	201 SS	.675	15.9	0.025	0.64	100'/Roll	5.2	2.3	Blue	5002
C14599-P550	201 SS	.675	15.9	0.025	0.64	100'/Roll	5.2	2.3	Lt. Blue	5012
C14599-P600	201 SS	.675	15.9	0.025	0.64	100'/Roll	5.2	2.3	Purple	4008
C14599-P700	201 SS	.675	15.9	0.025	0.64	100'/Roll	5.2	2.3	Gray	7036
C14599-P800	201 SS	.675	15.9	0.025	0.64	100'/Roll	5.2	2.3	Brown	8002
C14599-P900	201 SS	.675	15.9	0.025	0.64	100'/Roll	5.2	2.3	Black	9004

Tools to be used with this product: C00169 & C07569.

C00169 Standard Banding Tool



C07569 Bantam Tool



Roll Band with COLOR-IT®



BAND-IT reserves the right to substitute material with equal or better corrosion resistance and/or mechanical specifications.



General Use Band & Buckle

Type 200-300 Stainless Steel

Also known as Value Series Stainless steel – Typically non-magnetic, this economy steel is suitable for light duty applications when the benefits of stainless steel are required.

VALU-STRAP™ Band Stainless Steel

Part No.	Material	Width		Thickness		Average Breaking Strength (lbs)	Package Quantity	Weight	
		in	mm	in	mm			lbs	kg
VALU-STRAP™									
C13199	200/300 SS	.187	4.8	0.015	0.38	280	100'/Roll	1.2	0.5
C13399	200/300 SS	.375	9.6	0.015	0.38	450	100'/Roll	2.2	1.0
C13499	200/300 SS	.5	12.7	0.015	0.38	600	100'/Roll	2.9	1.3
C13599	200/300 SS	.675	15.9	0.015	0.38	750	100'/Roll	3.6	1.7
C13699	200/300 SS	.75	19.1	0.015	0.38	900	100'/Roll	4.4	2.0
C12799	200/300 SS	.375	9.6	0.015	0.38	450	200'/Roll	4.4	2.0
C12899	200/300 SS	.5	12.7	0.015	0.38	600	200'/Roll	5.8	2.6
C12999	200/300 SS	.675	15.9	0.015	0.38	750	200'/Roll	7.3	3.2
C13099	200/300 SS	.75	19.1	0.015	0.38	900	200'/Roll	8.8	3.9

These products are available in 300' rolls & Mill coil.

Tools to be used with this product: C00169, C00369, C07569, C08569, C40099 & J02069* (*The J02069 can be used with 3/8" maximum width product).

VALU-STRAP™ Plus Band Stainless Steel

Part No.	Material	Width		Thickness		Average Breaking Strength (lbs)	Package Quantity	Weight	
		in	mm	in	mm			lbs	kg
VALU-STRAP™ Plus									
C19199	200/300 SS	.375	9.6	0.020	0.51	600	100'/Roll	2.9	1.3
C18189	200/300 SS	.5	12.7	0.020	0.51	850	100'/Roll	3.8	1.7
C17199	200/300 SS	.675	15.9	0.020	0.51	1000	100'/Roll	5.6	2.6
C16189	200/300 SS	.75	19.1	0.020	0.51	1275	100'/Roll	5.7	2.5
C19399	200/300 SS	.375	9.6	0.020	0.51	600	200'/Roll	5.8	2.6
C18389	200/300 SS	.5	12.7	0.020	0.51	850	200'/Roll	7.6	3.4
C17399	200/300 SS	.375	15.9	0.020	0.51	1000	200'/Roll	11.2	5.2
C16389	200/300 SS	.75	19.1	0.020	0.51	1275	200'/Roll	11.4	5.0

Tools to be used with this product: C00169, C00369, C07569, C08569, C40099 & J02069* (*The J02069 can be used with 3/8" maximum width product).

Valuband Stainless Steel

Part No.	Material	Width		Thickness		Average Breaking Strength (lbs)	Package Quantity	Weight	
		in	mm	in	mm			lbs	kg
Valuband									
C14499	200/300 SS	.5	12.7	0.025	0.64	1000	100'/Roll	4.5	2.0
C14599	200/300 SS	.675	15.9	0.025	0.64	1250	100'/Roll	5.6	2.6
C14699	200/300 SS	.75	19.1	0.025	0.64	1590	100'/Roll	6.7	3.0
C14899	200/300 SS	.5	12.7	0.025	0.64	1000	200'/Roll	9.0	4.0
C14999	200/300 SS	.675	15.9	0.025	0.64	1250	200'/Roll	11.2	5.2
C15099	200/300 SS	.75	19.1	0.025	0.64	1590	200'/Roll	13.4	6.0

These products are available in 300' rolls & Mill coil.

Tools to be used with this product: C00169, C00369, C07569, C08569 & C40099.

BAND-IT reserves the right to substitute material with equal or better corrosion resistance and/or mechanical specifications.



General Use Band & Buckle

Stainless Steel Valucлип

Part No.	Material	Width		Package Quantity	Weight	
		in	mm		lbs	kg
Valucлип						
C15199	200/300 SS	.187	4.8	100/Box	0.2	0.1
C15399	200/300 SS	.375	9.6	100/Box	0.6	0.3
C15499	200/300 SS	.5	12.7	100/Box	1.1	0.5
C15599	200/300 SS	.675	15.9	100/Box	1.2	0.5
C15699	200/300 SS	.75	19.1	100/Box	2.1	0.9

Stainless Steel Clip

Part No.	Material	Width		Package Quantity	Weight	
		in	mm		lbs	kg
Stainless Steel Clip						
C25299	200/300 SS	.25	6.4	100/Box	0.3	0.1
L15399	200/300 SS	.375	9.6	100/Box	0.9	0.4
L15499	200/300 SS	.5	12.7	100/Box	1.5	0.7
L15599	200/300 SS	.675	15.9	100/Box	1.8	0.8
L15699	200/300 SS	.75	19.1	100/Box	2.6	1.2

Galvanized Carbon Steel "GCS"

Carbon steel which has been electro galvanized. This is an economical choice with a low corrosion resistance to chemicals, water or humidity and medium strength. It has very little stretch or forgiveness for the installer.

Galvanized Carbon Steel Band

Part No.	Material	Width		Thickness		Average Breaking Strength (lbs)	Package Quantity	Weight	
		in	mm	in	mm			lbs	kg
Galvanized Carbon Steel Band									
C30399	GCS	.375	9.6	0.025	0.63	700	100/Roll	3.3	1.6
C30499	GCS	.5	12.7	0.025	0.63	1125	100/Roll	5.1	2.4
C30599	GCS	.675	15.9	0.025	0.63	1405	100/Roll	6.4	3.0
C30699	GCS	.75	19.1	0.025	0.63	1690	100/Roll	7.7	3.6

These products are available in Mill coil.

Tools to be used with this product: C00169, C00369, C07569, C08569 & C40099.

Galvanized Carbon Steel Buckle

Part No.	Material	Width		Package Quantity	Weight	
		in	mm		lbs	kg
Galvanized Carbon Steel Ear-Lokt Buckle						
C35399	GCS	.375	9.6	100/Box	0.8	0.4
C35499	GCS	.5	12.7	100/Box	2.1	1.0
C35599	GCS	.675	15.9	100/Box	2.4	1.1
C35699	GCS	.75	19.1	100/Box	3.7	1.7



Corrosion Resistant Band & Buckle

Type 304 Stainless Steel

This alloy will provide a very good corrosion resistance in fresh water and industrial atmospheres. Often selected for light duty applications in food processing, chemical, power transmission and cable management.

304 Stainless Steel Band

Part No.	Material	Width		Thickness		Average Breaking Strength (lbs)	Package Quantity	Weight	
		in	mm	in	mm			lbs	kg
304 Stainless Steel Band									
C90399	304 SS	.375	9.6	0.015	0.38	450	200'/Roll	4.4	2.0
C91399	304 SS	.375	9.6	0.020	0.51	600	200'/Roll	5.9	2.7
C90499	304 SS	.5	12.7	1.015	0.38	600	200'/Roll	5.8	2.6
C91499	304 SS	.5	12.7	0.020	0.51	850	200'/Roll	7.6	3.4
C90599	304 SS	.675	15.9	0.015	0.38	750	200'/Roll	7.3	3.2
C91599	304 SS	.675	15.9	0.020	0.51	1000	200'/Roll	9.5	4.3
C90699	304 SS	.75	19.1	0.015	0.38	900	200'/Roll	8.8	3.9
C91699	304 SS	.75	19.1	0.020	0.51	1275	200'/Roll	11.3	5.0

Tools to be used with this product: C00169, C00369, C07569, C08569, C40099 & J02069* (*The J02069 can be used with 3/8" maximum width product).

Type 316 Stainless Steel

This alloy provides superior corrosion resistance in fresh water and typical atmospheres and is non-magnetic. Ideal for food process, chemical / agricultural hose assemblies, marine splash zones and some acidic environments.

316 Stainless Steel Band (coated & uncoated)

Part No.	Material	Width		Thickness		Average Breaking Strength (lbs)	Package Quantity	Weight	
		in	mm	in	mm			lbs	kg
316 Stainless Steel Band Coated									
AE4329	316 SS	.25	6.4	0.048**	1.22**	335	82.5'/Roll	2.0	0.9
AE4339	316 SS	.375	9.6	0.048**	1.22**	505	82.5'/Roll	2.6	1.2
AE4349	316 SS	.5	12.7	0.048**	1.22**	670	82.5'/Roll	3.5	1.6
AE4359	316 SS	.675	15.9	0.048**	1.22**	840	82.5'/Roll	4.4	2.0
AE4369	316 SS	.75	19.1	0.048**	1.22**	1000	82.5'/Roll	5.3	2.4

**Material thickness includes PPA 571 coating - Base material thickness is 0.015"

316 Stainless Steel Band Uncoated									
C40299	316 SS	.25	6.4	0.020	0.51	400	100'/Roll	2.0	0.9
C40399	316 SS	.375	9.6	0.025	0.64	750	100'/Roll	3.5	1.6
C403Y9	316 SS	.375	9.6	0.025	0.64	750	Yellow Tote 100'/Roll	3.7	1.7
C40499	316 SS	.5	12.7	0.030	0.76	1200	100'/Roll	4.9	2.2
C404B9	316 SS	.5	12.7	0.030	0.76	1200	Blue Tote 100'/Roll	5.6	2.6
C40599	316 SS	.675	15.9	0.030	0.76	1500	100'/Roll	6.2	2.8
C405G9	316 SS	.675	15.9	0.030	0.76	1500	Green Tote 100'/Roll	6.9	3.1
C40699	316 SS	.75	19.1	0.030	0.76	1800	100'/Roll	7.5	3.4
C406R9	316 SS	.75	19.1	0.030	0.76	1800	Red Tote 100'/Roll	8.2	3.7
C44499	316 SS	.5	12.7	0.015	0.38	600	200'/Roll	5.7	2.6
C444B9	316 SS	.5	12.7	0.015	0.38	600	Blue Tote 200'/Roll	5.8	2.7
C44599	316 SS	.675	15.9	0.015	0.38	750	200'/Roll	6.7	3.0
C445G9	316 SS	.675	15.9	0.015	0.38	750	Green Tote 200'/Roll	6.9	3.1
C44699	316 SS	.75	19.1	0.015	0.38	900	200'/Roll	8.3	3.8
C446R9	316 SS	.75	19.1	0.015	0.38	900	Red Tote 200'/Roll	8.4	3.8

Tools to be used with this product: C00169, C00369, C07569, C08569, C40099 & J02069* (*The J02069 can be used with 3/8" maximum width product).

316 Stainless Steel Ear-Lokt Buckle

Part No.	Material	Width		Package Quantity	Weight	
		in	mm		lbs	kg
316 Stainless Steel Ear-Lokt Buckle						
C45299**	316 SS	.25	6.4	100/Box	0.3	0.1
C45399	316 SS	.375	9.6	100/Box	0.8	0.4
C45499	316 SS	.5	12.7	100/Box	2.1	1.0
C45599	316 SS	.675	15.9	100/Box	2.4	1.1
C45699	316 SS	.75	19.1	100/Box	3.7	1.7

** Clip Style

316 Stainless Steel Clip

Part No.	Material	Width		Package Quantity	Weight	
		in	mm		lbs	kg
316 Stainless Steel Clip						
AE4529	316 SS	.25	6.4	100/Box	0.3	0.1
AE4539	316 SS	.375	9.6	100/Box	0.6	0.3
AE4549	316 SS	.5	12.7	100/Box	1.0	0.4
AE4559	316 SS	.675	15.9	100/Box	1.1	0.5
AE4569	316 SS	.75	19.1	100/Box	1.3	0.6



Corrosion Resistant Band & Buckle

Type 317L Stainless Steel

This alloy has superior corrosion resistance (similar to Type 316 SS) and is used to wrap bleach drums in the pulp and paper mills. The "L" indicates a low carbon content, which significantly improves its welding characteristics.

317L Band

Part No.	Material	Width		Thickness		Average Breaking Strength (lbs)	Package Quantity	Weight	
		in	mm	in	mm			lbs	kg
317L Band									
C41399	317L 1/4 Hard SS	.375	9.6	0.030	0.76	1290	300'/Roll	11.9	5.3
C42499	317L 1/4 Hard SS	.5	12.7	0.020	0.51	1160	300'/Roll	10.2	4.6
C41499	317L 1/4 Hard SS	.5	12.7	0.030	0.76	1725	300'/Roll	15.9	7.2
C41599	317L 1/4 Hard SS	.675	15.9	0.030	0.76	2150	300'/Roll	19.9	9.0
C41699	317L 1/4 Hard SS	.75	19.1	0.030	0.76	2580	300'/Roll	23.9	10.8
These products available in Mill coil.									
Tools to be used with this product: C00169, C00369, C07569, C08569, C40099 & J02069* (*The J02069 can be used with 3/8" maximum width product).									

Alloy 400 - Monel®

This material of choice for submerged marine and harsh chemical applications.

Monel® Band

Part No.	Material	Width		Thickness		Average Breaking Strength (lbs)	Package Quantity	Weight	
		in	mm	in	mm			lbs	kg
Monel® 400 Band									
C80399	Monel® 400 Band	.375	9.6	0.025	0.64	630	100'/Roll	3.7	1.7
C80499	Monel® 400 Band	.5	12.7	0.030	0.76	1050	100'/Roll	5.1	2.4
C80599	Monel® 400 Band	.675	15.9	0.030	0.76	1310	100'/Roll	7.7	3.5
C80699	Monel® 400 Band	.75	19.1	0.030	0.76	1595	100'/Roll	7.7	3.6

Monel® Buckle

Part No.	Material	Width		Package Quantity	Weight	
		in	mm		lbs	kg
Monel® 400 Buckle						
C85399	Monel® 400	.375	9.6	100/Box	0.8	0.4
C85499	Monel® 400	.5	12.7	100/Box	2.1	1.0
C85599	Monel® 400	.675	15.9	100/Box	2.4	1.0
C85699	Monel® 400	.75	19.1	100/Box	3.7	1.7

Special Purpose Band

All Purpose Band (coated & uncoated)

Part No.	Material	Width		Thickness		Diameter of Hole		Package Quantity	Weight	
		in	mm	in	mm	in	mm		lbs	kg
All Purpose Band Coated										
AE4759	316 SS	.5	12.7	0.050	1.3	0.19	5	82.5'/Roll	3.1	1.4
AE4769	316 SS	.75	19.1	0.050	1.3	0.27	7	82.5'/Roll	5.3	2.4
AE4779	316 SS	1.0	25.4	0.050	1.3	0.31	8	82.5'/Roll	7.3	3.3
**Material thickness includes PPA 571 coating - Base material thickness is 0.030"										
All Purpose Band Uncoated										
AE4259	316 SS	.5	12.7	0.030	0.76	0.19	5	82.5'/Roll	3.1	1.4
AE4269	316 SS	.75	19.1	0.030	0.76	0.27	7	82.5'/Roll	4.6	2.1
AE4279	316 SS	1.0	25.4	0.030	0.76	0.31	8	82.5'/Roll	5.5	2.5



Band & Buckle Kits



BAND-IT® Warehouse Kit C27599

- Portable rugged container, 16" X 8-1/2" X 9-3/4" (Weight: 51.5lbs, 23.4kg)
- Kit includes: 1 each - C00169, Close quarter Tension nut, C20299, C20399, C20499, C20599, C20699, C25399, C25499, C25599, C25699, C72499 and C72699



BAND-IT® Band & Buckle Kit C27699 & C27799

- Basic starter kit in a polyethylene case
- Two versions available:
 - C27699 - 1/2" band & buckle kit: 1- C00169, 1- C20499, 1- C25499 and 1- C72499 (kit weight - 17.2lbs, 7.8kg)
 - C27799 - 3/4" band & buckle kit: 1- C00169, 1- C20699, 1- C25699 and 1- C72699 (kit weight - 21.6lbs, 9.8kg)



Pok-It Pak Kit J10099

- Polyethylene carrying case
- Kit includes: J02069 Pok-It II tool, 1- C20299, 1- C20399, 1- C25299, 1- C25399, 1- C72099, 1- C72299, 80- Junior Smooth ID clamps (20- 3/8"W X 13/16" dia, 20- 3/8" X 1-3/8" dia, 20- 1/4" X 3/4" dia, 20- 3/8" X 1-3/8" dia), 10- BAND-FAST® (1/4" X 16" L), and 10- BAND-FAST® (1/4" X 34" L)



201 Stainless Steel Band and Buckle Kits

Our most popular band and buckle is available in convenient kits. Each kit contains just the right amount of band and buckles ready to take with you on the job.

- C204BB (1/2" Blue Tote, 6.13lbs) - 100' band with 35 Ear-Lokt Buckles
- C206BB (3/4" Red Tote, 8.88lbs) - 100' band with 25 Ear-Lokt Buckles



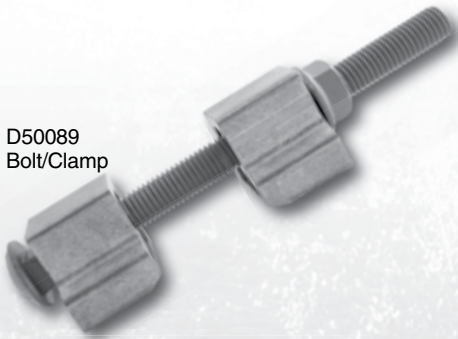
MOUNTING HARDWARE

Mounting Hardware

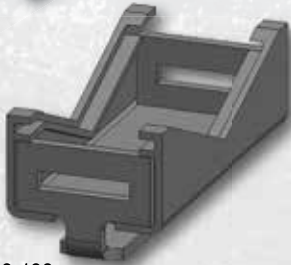
Engineered to achieve a strong and secure grip on all components, provides superior corrosion resistance, and will sustain the hold in high vibration environments while keeping the support system compact.

- Specially designed reinforced SIGNFIX® Channel extrusions
- Convenient attachment methods
- Hex head bolts with metal and fiber washer, no nuts required
- Applied with BAND-IT® banding products
- Banding size may vary depending on application. Please contact your BAND-IT® representative for further details

D50089 Bolt/Clamp



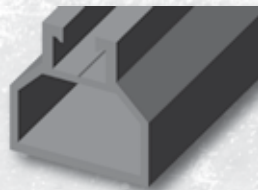
SX0220-100 Universal Channel Clamp



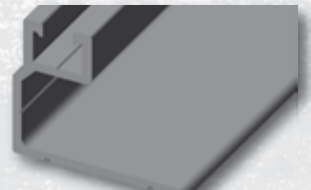
SX0073 Medium Channel Extrusion



SX0130 Large Channel Extrusion



SX0090 Large Corner Angle Channel Extrusion



D51089 Mounting Plate



Part No.	Material	Description	Package Quantity	Package Weight	
				Lbs	Kg
Mounting Hardware					
D00189	200/300SS	Single bolt straight leg, bracket with 304SS bolt, washer and fiber washer. 3/4" slot.	50/Box	7.0	3.2
D00299	200/300SS	5/6"-18x3/4" hex head SS Bolt, SS washer and fiber washer.	50/Box	1.3	0.6
D00499	200/300SS	Single bolt straight leg, bracket only. 3/4" slot.	50/Box	5.6	2.6
D00799	200/300SS	L-Mount, right angle bracket	50/Box	4.4	2.0
D00889	200/300SS	2 bolt straight leg, bracket with SS washer and fiber washer. 3/4" slot.	50/Box	9.2	4.2
D00999	200/300SS	2 bolt straight leg, bracket. 3/4" slot.	50/Box	7.1	3.2
D02189	200/300SS	Single bolt flared leg, bracket with SS bolt, SS washer and fiber washer. 3/4" slot.	50/Box	7.0	3.2
D02299	200/300SS	Single bolt flared leg, bracket only. 3/4" slot.	50/Box	5.5	2.5
D31099	200/300SS	Flared leg mini-bracket with 304SS bolt and fiber washer. 1/2" slot.	50/Box	3.0	1.3
D31599	200/300SS	Straight leg mini-bracket with 304SS bolt and fiber washer. 1/2" slot.	50/Box	3.0	1.3
D50089	Aluminum	Bolt/clamp. Use with maxium 3/4" width band.	50/Box	23.7	10.8
D50489	Aluminum	Bolt/clamp. Use with maxium 1-1/4" width band.	25/Box	33.0	15.0
D51089	Aluminum	1-1/2" (3.81 mm) x 4-3/4" (120.7 mm) with a 2" long 5/8" plated bolt.	25/Box	14.9	6.8
D51289	Aluminum	1-1/2" (3.81 mm) x 5-1/4" (133.3 mm) with a 2" long 5/8" plated bolt.	25/Box	21.0	9.5
D51389	Aluminum	1-1/2" (3.81 mm) x 5-1/4" (133.3 mm) with a 3" long 5/8" plated bolt.	25/Box	21.0	9.5
D04099	Aluminum	Signal Mount, 1-1/2" NPT	25/Box	19.4	8.8
D04599	Aluminum	Narrow Back Signal Mount, 1-1/2" NPT	25/Box	18.3	8.3



MOUNTING HARDWARE



D31099 Flared Leg Mini-Brack-It

D31599 Straight Leg Mini-Brack-It

D02189 Single Bolt Flared leg

D00189 Single Bolt Straight Leg

D00889 2 Bolt Straight Leg

D00799 L-Mount Right Angle Brack-It

D04599 Narrow Back
Signal Mount
1-1/2" NPT



D04099 Signal Mount,
1-1/2" NPT





ULTRA-LOK® BANDING SYSTEM



3/4" Ultra-Lok® Band and Buckle formed to a low profile, tamper proof lock.

Ultra-Lok® Banding Systems

Designed for quick installation, highest clamping force and gap-free inside diameter. The best choice for demanding applications!

- Apply 3-5 times faster than band and buckle hand tools
- Unique lock formed under full tension maximizing tightness
- 201 1/4 hard SS band provides greater material strength allowing tighter clamps and can be double wrapped for additional strength
- 3/4" band available in plastic totes with buckles
- Application Tools: UL4000-C cordless, and UL9010 110-volt AC



Longer charge and battery life. Now powered with a Lithium-ion battery, the UL4000-C battery charge lasts longer with consistent peak performance through the life of the battery. In addition, the UL4000-C uses a mechanical clutch and predetermined torque settings to provide a consistent tightness that eliminates assembly guesswork.



ULTRA-LOK® Tool with Lanyard

Part No.	Description
UL4000-C	ULTRA-LOK® tool comes fully assembled in a custom protective case made with impact resistant HDPE thermoplastic. Included with the UL4000-C: 1- spare 18 volt Lithium-ion battery, 1- battery charger, tool lubrication/assembly tool kit and operators manuals.
M09387	1/2" shear plate (SOLD SEPARATELY) is compatible with the UL 4000-C, UL4000-B, UL4000, and UL9010 to convert from 3/4" ULTRA-LOK® to 1/2" ULTRA-LOK® Clamp systems. For models of the UL9010 built prior to October 2006, use the ULK249 upgrade kit.
UL4199	UL Safety Belt (SOLD SEPARATELY) is compatible with the UL 4000-C, UL4000-B, UL4000, and UL9010.



ULTRA-LOK® BANDING SYSTEM



UL4000-C Ultra-Lok® Cordless Tool

- Ultra-Lok clamps 1/2"* & 3/4" either preformed or Band and Buckle can be applied
- Locks under full tension
- Adjustable speed and torque
- Consistent, repeatable tensioning
- Ultra-Lok clamps can be applied four times faster than conventional clamps
- Supplied with spare battery and charger with Automatic Battery Tune-Up feature
- Available in 110 or 220 volt power source
- Ideal for field repairs

* For 1/2" applications, must use M09387 1/2" Shear Plate.

UL 9010 Ultra-Lok® Electric Tool

- Ultra-Lok clamps 1/2" & 3/4" either preformed or Band and Buckle can be applied
- Locks under full tension
- Adjustable speed and torque
- Consistent, repeatable tensioning
- Ideal for production and large diameter hose clamping
- No roll up required

Part No.	Material	Width		Length		Single Wrap		Double Wrap		Package Quantity	Weight	
		in	mm	in	mm	in	mm	in	mm		lbs	kg
Ultra-Lok® Band												
UL1018**	201 SS	.5	12.7	18	457	3	76	not suggested		50/Box	4.1	1.9
UL1024**	201 SS	.5	12.7	24	610	5	127	2.5	64	50/Box	5.3	2.4
UL1028**	201 SS	.5	12.7	28	711	6	152	3.0	76	50/Box	6.4	0.9
UL1032**	201 SS	.5	12.7	32	813	7	178	3.5	89	50/Box	7.2	3.3
UL1036**	201 SS	.5	12.7	36	914	8	203	4.0	102	50/Box	8.0	3.6
UL1046**	201 SS	.5	12.7	46	1168	11	280	5.5	140	25/Box	5.9	2.7
UL1056**	201 SS	.5	12.7	56	1422	14	356	7.0	178	25/Box	7.1	3.2
UL1070**	201 SS	.5	12.7	70	1778	18	457	9.0	229	25/Box	8.5	3.9
UL1086**	201 SS	.5	12.7	86	2184	22	559	11.0	280	25/Box	10.2	4.6
UL1096**	201 SS	.5	12.7	96	2438	25	635	12.5	318	25/Box	11.2	5.1
UL1106**	201 SS	.5	12.7	106	2692	28	711	14.0	356	25/Box	12.3	5.6
UL1116**	201 SS	.5	12.7	116	2946	31	787	15.5	394	25/Box	13.3	6.0
UL2020	201 SS	.75	19.1	20	508	4	102	not suggested		30/Tote	4.3	2.0
UL2024	201 SS	.75	19.1	24	610	5	127	not suggested		25/Tote	4.1	1.9
UL2028	201 SS	.75	19.1	28	711	6	152	not suggested		21/Tote	4.3	2.0
UL2032	201 SS	.75	19.1	32	813	7	178	3.5	89	19/Tote	4.3	2.0
UL2036	201 SS	.75	19.1	36	914	8	252	4.0	102	33/Tote	8.2	3.7
UL2040	201 SS	.75	19.1	40	1016	10	254	4.5	127	30/Tote	7.75	3.5
UL2044	201 SS	.75	19.1	44	1118	11	267	5.5	140	27/Tote	8.2	3.7
UL2048	201 SS	.75	19.1	48	1219	12	305	6.0	153	25/Tote	8.2	3.7
UL2052	201 SS	.75	19.1	52	1321	13	330	6.5	165	23/Tote	8.2	3.7
UL2060	201 SS	.75	19.1	60	1524	15	381	7.5	191	20/Tote	8.2	3.7
UL2068	201 SS	.75	19.1	68	1727	17	445	8.5	216	17/Tote	8.2	3.7
UL2076	201 SS	.75	19.1	76	1930	20	508	10.0	254	15/Tote	8.2	3.7
UL2084	201 SS	.75	19.1	84	2134	22	559	11.0	280	14/Tote	8.2	3.7
UL2092	201 SS	.75	19.1	92	2337	24	622	12.0	305	13/Tote	8.2	3.7
UL2120	201 SS	.75	19.1	120	3048	32	826	16.0	407	10/Tote	8.2	3.7
UL2150	201 SS	.75	19.1	150	3810	41	1029	20.5	508	8/Tote	8.2	3.7
UL2175	201 SS	.75	19.1	175	4445	48	1232	24.0	610	7/Tote	8.2	3.7
Ultra-Lok® Buckles												
UB2549	201 SS									100/Box	3.7	1.7
UB2569	201 SS									100/Box	3.7	1.7

** 1/2" Bands will require M09387 for UL4000 and UL9010 Tool.
3/4" width band lengths 36" or longer in 100' Totes; 34" or less in 50' Totes.



BAND-FAST®

BAND-FAST® is a ready to use band, pre-cut and pre-assembled with a clip, buckle or seal. Pre-assembled product gives you an edge over your competition as it saves up to 30% time and labor costs for your large projects. Whenever you traditionally use Band & Buckle, or have a need for innovative products, BAND-FAST® can do the job faster and with less scrap material! BAND-FAST® is available in many materials including: Monel®, Inconel®, AL6XN®, Titanium, AL2003™, 316SS and others upon request.

Part No.	Color	Fastner	Width		Thickness		Length		Unit of Measure
			In	mm	In	mm	In	mm	
BAND-FAST® with COLOR-IT®									
BFEC-A0830-029-U	Stainless	Ear-Lokt	.50	12.7	0.030	0.7	29	736	100/Box
BFEC-A0830-029-P000	White	Ear-Lokt	.50	12.7	0.030	0.7	29	736	100/Box
BFEC-A0830-029-P100	Red	Ear-Lokt	.50	12.7	0.030	0.7	29	736	100/Box
BFEC-A0830-029-P200	Orange	Ear-Lokt	.50	12.7	0.030	0.7	29	736	100/Box
BFEC-A0830-029-P300	Yellow	Ear-Lokt	.50	12.7	0.030	0.7	29	736	100/Box
BFEC-A0830-029-P302	Tan	Ear-Lokt	.50	12.7	0.030	0.7	29	736	100/Box
BFEC-A0830-029-P400	Green	Ear-Lokt	.50	12.7	0.030	0.7	29	736	100/Box
BFEC-A0830-029-P500	Blue	Ear-Lokt	.50	12.7	0.030	0.7	29	736	100/Box
BFEC-A0830-029-P550	Lt. Blue	Ear-Lokt	.50	12.7	0.030	0.7	29	736	100/Box
BFEC-A0830-029-P600	Purple	Ear-Lokt	.50	12.7	0.030	0.7	29	736	100/Box
BFEC-A0830-029-P700	Gray	Ear-Lokt	.50	12.7	0.030	0.7	29	736	100/Box
BFEC-A0830-029-P800	Brown	Ear-Lokt	.50	12.7	0.030	0.7	29	736	100/Box
BFEC-A0830-029-P900	Black	Ear-Lokt	.50	12.7	0.030	0.7	29	736	100/Box
BFVC-A0830-029-U	Stainless	Valuclip	.50	12.7	0.030	0.7	29	736	100/Box
BFVC-A0830-029-P000	White	Valuclip	.50	12.7	0.030	0.7	29	736	100/Box
BFVC-A0830-029-P100	Red	Valuclip	.50	12.7	0.030	0.7	29	736	100/Box
BFVC-A0830-029-P200	Orange	Valuclip	.50	12.7	0.030	0.7	29	736	100/Box
BFVC-A0830-029-P300	Yellow	Valuclip	.50	12.7	0.030	0.7	29	736	100/Box
BFVC-A0830-029-P302	Tan	Valuclip	.50	12.7	0.030	0.7	29	736	100/Box
BFVC-A0830-029-P400	Green	Valuclip	.50	12.7	0.030	0.7	29	736	100/Box
BFVC-A0830-029-P500	Blue	Valuclip	.50	12.7	0.030	0.7	29	736	100/Box
BFVC-A0830-029-P550	Lt. Blue	Valuclip	.50	12.7	0.030	0.7	29	736	100/Box
BFVC-A0830-029-P600	Purple	Valuclip	.50	12.7	0.030	0.7	29	736	100/Box
BFVC-A0830-029-P700	Gray	Valuclip	.50	12.7	0.030	0.7	29	736	100/Box
BFVC-A0830-029-P800	Brown	Valuclip	.50	12.7	0.030	0.7	29	736	100/Box
BFVC-A0830-029-P900	Black	Valuclip	.50	12.7	0.030	0.7	29	736	100/Box
BAND-FAST® with COLOR-IT® with Center Punch Buckle									
BFPC-J1025-030-U	Stainless	Center Punch	.625	15.8	0.025	0.6	30	762	100/Box
BFPC-J1025-030-P000	White	Center Punch	.625	15.8	0.025	0.6	30	762	100/Box
BFPC-J1025-030-P100	Red	Center Punch	.625	15.8	0.025	0.6	30	762	100/Box
BFPC-J1025-030-P200	Orange	Center Punch	.625	15.8	0.025	0.6	30	762	100/Box
BFPC-J1025-030-P300	Yellow	Center Punch	.625	15.8	0.025	0.6	30	762	100/Box
BFPC-J1025-030-P302	Tan	Center Punch	.625	15.8	0.025	0.6	30	762	100/Box
BFPC-J1025-030-P400	Green	Center Punch	.625	15.8	0.025	0.6	30	762	100/Box
BFPC-J1025-030-P500	Blue	Center Punch	.625	15.8	0.025	0.6	30	762	100/Box
BFPC-J1025-030-P550	Light Blue	Center Punch	.625	15.8	0.025	0.6	30	762	100/Box
BFPC-J1025-030-P600	Purple	Center Punch	.625	15.8	0.025	0.6	30	762	100/Box
BFPC-J1025-030-P700	Gray	Center Punch	.625	15.8	0.025	0.6	30	762	100/Box
BFPC-J1025-030-P800	Brown	Center Punch	.625	15.8	0.025	0.6	30	762	100/Box
BFPC-J1025-030-P900	Black	Center Punch	.625	15.8	0.025	0.6	30	762	100/Box

Tools to be used with this product: C00169, C00369, C07569, C08569 & C40099.





BAND-FAST®

BAND-FAST® with Ear-Lokt Buckle with COLOR-IT® - Polyester

Part No.	Material	Width		Thickness		Finished Length		Max. Dia. Single Wrap		Max. Dia. Double Wrap		Package Quantity	Color
		in	mm	in	mm	in	mm	in	mm	in	mm		
BAND-FAST® with Ear-Lokt Buckle with COLOR-IT® - Polyester													
BFES-A0830-020-P900C†	201 SS	.5	12.7	0.030	0.76	20	51	4	102	2	51	25/Box	Black†
BFES-A0830-024-P900C†	201 SS	.5	12.7	0.030	0.76	24	61	5	127	2.5	64	25/Box	Black†
BFES-A0830-027-P900C†	201 SS	.5	12.7	0.030	0.76	27	69	6	152	3	76	25/Box	Black†
BFES-A0830-034-P900C†	201 SS	.5	12.7	0.030	0.76	34	86	8	203	4	102	25/Box	Black†
BFES-A0830-041-P900C†	201 SS	.5	12.7	0.030	0.76	41	104	10	254	5	127	25/Box	Black†
BFES-A0830-048-P900C†	201 SS	.5	12.7	0.030	0.76	48	122	12	305	6	152	25/Box	Black†
BFES-A0830-055-P900C†	201 SS	.5	12.7	0.030	0.76	55	140	14	356	7	178	25/Box	Black†
BFES-A0830-069-P900C†	201 SS	.5	12.7	0.030	0.76	69	175	18	457	9	229	25/Box	Black†
BFES-A0830-076-P900C†	201 SS	.5	12.7	0.030	0.76	76	193	20	508	10	254	15/Box	Black†
BFES-A0830-090-P900C†	201 SS	.5	12.7	0.030	0.76	90	229	24	610	12	305	15/Box	Black†
BFES-A0830-020-P900C	201 SS	.75	19.1	0.030	0.76	20	51	4	102	2	51	25/Box	Black
BFES-A1230-024-P900C	201 SS	.75	19.1	0.030	0.76	24	61	5	127	2.5	64	25/Box	Black
BFES-A1230-027-P900C	201 SS	.75	19.1	0.030	0.76	27	69	6	152	3	76	25/Box	Black
BFES-A1230-034-P900C	201 SS	.75	19.1	0.030	0.76	34	86	8	203	4	102	25/Box	Black
BFES-A1230-041-P900C	201 SS	.75	19.1	0.030	0.76	41	104	10	254	5	127	25/Box	Black
BFES-A1230-048-P900C	201 SS	.75	19.1	0.030	0.76	48	122	12	305	6	152	25/Box	Black
BFES-A1230-055-P900C	201 SS	.75	19.1	0.030	0.76	55	140	14	356	7	178	25/Box	Black
BFES-A1230-069-P900C	201 SS	.75	19.1	0.030	0.76	69	175	18	457	9	229	25/Box	Black
BFES-A1230-076-P900C	201 SS	.75	19.1	0.030	0.76	76	193	20	508	10	254	15/Box	Black
BFES-A1230-090-P900C	201 SS	.75	19.1	0.030	0.76	90	229	24	610	12	305	15/Box	Black

Tools to be used with this product: C00169, C00369, C07569, C08569 & C40099.



BAND-FAST® Open End with Center Punch Clip

SS Part No.	Width		Thickness		Length**		Inside Diameter Single Wrap		Inside Diameter Double Wrap		Pkg Qty
	In	mm	In	mm	In	mm	In	mm	In	mm	
BAND-FAST® Open End with Center Punch Clip											
O311S9	3/8	9.6	0.020	0.51	15.0	381	2.75	70	1.375	35	100/Box
O316S9	3/8	9.6	0.020	0.51	18.0	457	4	101	2	50	100/Box
O325S9	3/8	9.6	0.020	0.51	24.0	610	6	152	3	76	100/Box
O10S99	5/8	15.9	0.020	0.51	23.0	584	5	127	2.5	64	50/Box
O16S99	5/8	15.9	0.020	0.51	31.0	787	8	203	4	102	50/Box
O20S99	5/8	15.9	0.020	0.51	37.0	940	10	254	5	127	25/Box
O32S99	5/8	15.9	0.020	0.51	56.0	1422	16	406	8	203	25/Box

** Take the object circumference and add 4" to grip with the tool (2 X circumference for double wrap plus 6" for tail insertion).

Tools to be used with this product: T30069



For quick installation



BAND-FAST®

BAND-FAST® is a pre-cut band with smoother edges that creates a safer and more efficient working environment with decreased installation labor.



BAND-FAST® Precut and Assembled with Clip

Part No.	Material	Width		Thickness		Finished Length		Max. Dia. Single Wrap		Max. Dia. Double Wrap		Package Quantity	Weight	
		in	mm	in	mm	in	cm	in	mm	in	mm		lbs	kg
BAND-FAST® Precut and Assembled with Clip														
L20399	201 SS	.25	6.4	0.020	0.51	10	25	2	50	not suggested		100/Box	2.2	0.9
L20499	201 SS	.25	6.4	0.020	0.51	16	40	3-1/2	88	1-1/2	38	100/Box	3.1	1.4
L20799	201 SS	.25	6.4	0.020	0.51	19	48	5	127	2-1/2	63	100/Box	3.5	1.6
L20899	201 SS	.25	6.4	0.020	0.51	26	68	7	177	3-1/2	88	100/Box	4.6	2.1
L21099	201 SS	.25	6.4	0.020	0.51	34	86	9	228	4-1/2	114	100/Box	5.6	2.6
L22199	201 SS	.375	9.6	0.025	0.64	16	40	3-1/2	88	1-1/2	38	100/Box	6.2	2.8
L22999	201 SS	.375	9.6	0.025	0.64	44	112	12	305	6	152	25/Box	3.6	1.6
L24299	201 SS	.5	12.7	0.030	0.76	18	45	4	102	2	50	100/Box	10.5	4.8
L24699	201 SS	.5	12.7	0.030	0.76	31	78	8	203	4	101	25/Box	4.7	2.1
L26399	201 SS	.675	15.9	0.030	0.76	21	53	5	127	2-1/2	63	100/Box	15.1	6.8
L27199	201 SS	.675	15.9	0.030	0.76	56	142	16	406	8	203	25/Box	9.0	4.1
L27399	201 SS	.675	15.9	0.030	0.76	69	508	20	508	10	175	25/Box	10.7	4.8
L28499	201 SS	.75	19.1	0.030	0.76	24	60	6	152	3	76	50/Box	10.9	4.9
L28899	201 SS	.75	19.1	0.030	0.76	37	93	10	254	5	127	25/Box	7.6	3.5
L29099	201 SS	.75	19.1	0.030	0.76	50	127	14	355	7	177	25/Box	9.7	4.4
L29299	201 SS	.75	19.1	0.030	0.76	62	157	18	457	9	228	25/Box	11.6	5.3

Tools to be used with this product: C00169, C00369, C07569, C40099 & J02069*.

* The J02069 can be used with 3/8" maximum width product

BAND-FAST® Precut and Assembled with Ear-Lokt Buckle

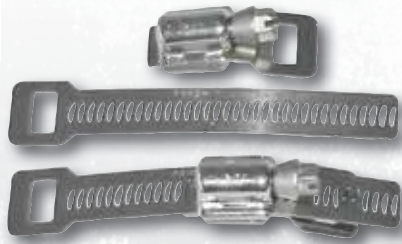
Part No.	Material	Width		Thickness		Finished Length		Max. Dia. Single Wrap		Max. Dia. Double Wrap		Package Quantity
		in	mm	in	mm	in	cm	in	mm	in	mm	
BAND-FAST® Precut and Assembled with Ear-Lokt Buckle												
BFES-A0830-020	201 SS	.5	12.7	0.030	0.76	20	51	4	102	2	51	25/Box
BFES-A0830-024	201 SS	.5	12.7	0.030	0.76	24	61	5	127	2.5	64	25/Box
BFES-A0830-027	201 SS	.5	12.7	0.030	0.76	27	69	6	152	3	76	25/Box
BFES-A0830-034	201 SS	.5	12.7	0.030	0.76	34	86	8	203	4	102	25/Box
BFES-A0830-041	201 SS	.5	12.7	0.030	0.76	41	104	10	254	5	127	25/Box
BFES-A0830-048	201 SS	.5	12.7	0.030	0.76	48	122	12	305	6	152	25/Box
BFES-A0830-055	201 SS	.5	12.7	0.030	0.76	55	140	14	356	7	178	25/Box
BFES-A0830-069	201 SS	.5	12.7	0.030	0.76	69	175	18	457	9	229	25/Box
BFES-A0830-076	201 SS	.5	12.7	0.030	0.76	76	193	20	508	10	254	15/Box
BFES-A0830-090	201 SS	.5	12.7	0.030	0.76	90	229	24	610	12	305	15/Box
BFES-A1230-020	201 SS	.75	19.1	0.030	0.76	20	51	4	102	2	51	25/Box
BFES-A1230-024	201 SS	.75	19.1	0.030	0.76	24	61	5	127	2.5	64	25/Box
BFES-A1230-027	201 SS	.75	19.1	0.030	0.76	27	69	6	152	3	76	25/Box
BFES-A1230-034	201 SS	.75	19.1	0.030	0.76	34	86	8	203	4	102	25/Box
BFES-A1230-041	201 SS	.75	19.1	0.030	0.76	41	104	10	254	5	127	25/Box
BFES-A1230-048	201 SS	.75	19.1	0.030	0.76	48	122	12	305	6	152	25/Box
BFES-A1230-055	201 SS	.75	19.1	0.030	0.76	55	140	14	356	7	178	25/Box
BFES-A1230-069	201 SS	.75	19.1	0.030	0.76	69	175	18	457	9	229	25/Box
BFES-A1230-076	201 SS	.75	19.1	0.030	0.76	76	193	20	508	10	254	15/Box
BFES-A1230-090	201 SS	.75	19.1	0.030	0.76	90	229	24	610	12	305	15/Box

Tools to be used with this product: C00169, C00369, C07569, C08569 & C40099.



ADJUSTABLE BANDING SYSTEMS

Scru-Seal Rack and Housing



Adjustable Banding Systems

BAND-IT® Scru-Seal Kit uses a rack and pinion system allowing the user to make a clamp in any size. Kit offers complete flexibility for use in almost any application. Form clamps of any diameter from continuous roll of band and tension using only a screwdriver.

- A rack and pinion system used with band to create any size clamp
- Components are separately packaged for flexibility
- Stainless steel offers very good resistance to mild atmosphere, fresh water and the sun's UV rays
- An adjustable style worm drive, screwdriver clamp can be made for any length with any band cutter and a screw driver
- Can be retensioned if necessary

Scru-Seal Banding Systems

Designed for medium duty application.

For a complete line of adjustable clamping systems, visit our website: www.band-it-idex.com.



M21099 Scru-Seal Kit with VALU-STRAP™

M21899 Clamp-Pak

1/2"



Scru-Seal Rack and Housing



Worm Gear Application

Scru-Band Banding Systems

Designed for light duty application.



M15699, M15799 Scru-Band Kit

M15899 Scru-Band Kit



Scru-Band Rack and Housing



Scru-Band Clamping System



IDENTIFICATION SYSTEMS



ID Tag Imprinter Tool

Optional Letter Dial Kits

Tool Accessories

ID Guide Accessory

ID Tags

(Custom embossed tags available with 1/8" lettering only)

ID Tag Imprinter Tool

Part. No.	Tool supplied with:
ID2006	3/32" character wheel
ID2026	1/16" character wheel
ID2036	1/8" character wheel
ID2046	3/16" character wheel
ID2056	1/4" character wheel

Optional Letter Dial Kits

Part. No.	Kit supplied with:
ID2816	1/16" character wheel
ID2826	1/8" character wheel
ID2836	3/16" character wheel
ID2846	1/4" character wheel
ID2906	3/32" character wheel

ID2859 Guide Accessory: Allows imprinting on SS Bands up to 3/4" X 0.030".

Dot Peen Tags



Embossed Tags



A92079 Tie-Lok® II Tool



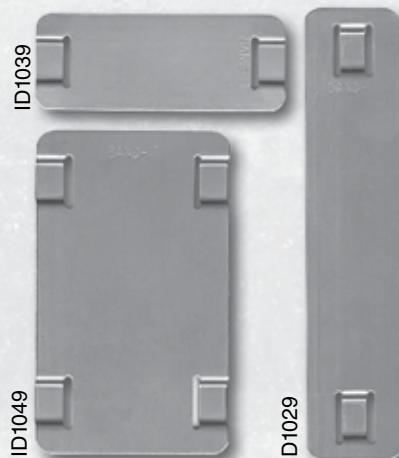
Use with
1/4" wide (6.35mm)
Tie-Lok® Ties

ID Kit - ID3009

The BAND-IT ID Kit comes with an assortment of blank ID tags to use with the ID Tagging Systems. Includes various Tie-Lok Ties and Tie-Lok tool to fasten tags to items. Total weight is 22.7 lbs, 10.3 Kg.



ID3009 ID Kit



ID Tags

Part. No.	Description
ID1009	304SS 0.75" X 2" X 0.015" - 100/BX
ID1019	304SS 1.5" X 2.5" X 0.015" - 100/BX
ID1029	304SS 0.75" X 3.5" X 0.015" - 100/BX
ID4409	316SS 0.75" X 2" X 0.010" - 100/BX
ID4419	316SS 1.5" X 2.5" X 0.015" - 100/BX
ID4429	316SS 0.75" X 3.5" X 0.015" - 100/BX
Custom Embossed Tags	
ID1039	304SS 0.75" X 2" X 0.015" - 1 EA Custom Embossed
ID1049	304SS 1.5" X 2.5" X 0.015" - 1 EA Custom Embossed
ID1059	304SS 0.75" X 3.5" X 0.015" - 1 EA Custom Embossed
ID4609	316SS 0.75" X 2" X 0.010" - 1 EA Custom Embossed
ID4619	316SS 1.5" X 2.5" X 0.015" - 1 EA Custom Embossed
ID4629	316SS 0.75" X 3.5" X 0.015" - 1 EA Custom Embossed



EASY READ IDENTIFICATION

EASY READ characters slide onto any 3/8" tie.

- BAND-IT EASY READ letters, numbers and symbols made from type 316 SS
- Easy to read in dim light and inaccessible places
- Slide directly onto cable ties to create a self-contained wrap tag
- Characters sold individually in bags of 100 pcs
- Contact BAND-IT® for availability



AE0609
Easy Read Kit

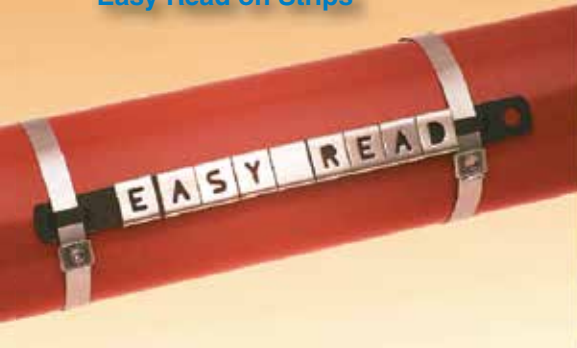
The kit comes in a convenient carrying case weighing 19.5 lbs and contains an assortment of EASY Carriers and Easy Strips.



Apply EASY READ Characters with these ties:

- Tie-Lok® Ties
- BAND-IT® Ties
- Ball-Lok Ties
- Ball-Lokt™ Ties
- Multi-Lok Ties
- 3/8" width band
- PPA Coated Band

Easy Read on Strips



Easy Read on Ties



Easy Read Strips



STAINLESS STEEL TAPE EMBOSsing SYSTEM

ID4002 Stainless Steel Tape Embossing System

With the portable tape embossing tool and a roll of 304 stainless steel tape, you can quickly and easily produce I.D. tags with 3/16" letter size which can be attached with your choice of BAND-IT® ties.

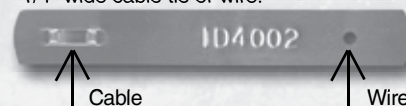
Replacement Rolls: ID4059 - 1/2" X 21' - 2 pack.



ID4002
SS Embossing System



Slot used with your choice of BAND-IT® 1/4" wide cable tie or wire.



Stainless Steel Tape





TOOLS

C00169 Standard Banding Tool



The C00169 is used to apply BAND-IT® Stainless Steel Band, Galvanized Carbon Steel Band, BAND-FAST®, general use band and miscellaneous strapping for band widths 3/16" to 3/4". Tensions over 2,400 lbs of force.

Replacement Parts:

- C00689 - Tension handle and tension screw kit
- C01899 - Band Gripper
- C01687 - Thrust bearing
- C05887 - Cutterbar and handle assembly

C00369 Heavy Duty Banding Tool

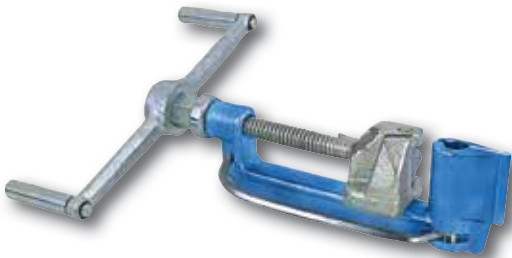


The C00369 is a heavy duty version of the C00169 tool. Primarily designed for thicker materials and is not recommended for band widths .015" or .020". This tool can be used for .044" X 3/4" wide Giant Band. Tool will tension beyond the limits of the 3300 lbs of force to yield 3/4" wide 201SS Giant Band.

Replacement Parts:

- C01899 - Band Gripper
- C07087 - Thrust Bearing
- C05887 - Cutterbar and Handle Assembly
- C04986 - 5/8" Tension Handle

G40269 Giant Banding Tool



The G40269 is the strongest BAND-IT hand tool. This tool is designed for use with 3/4", 1", 1-1/4" width X .044" thick Giant Band & Buckle. Tool will tension beyond the limits of the 5500 lbs of force to yield 201SS Giant Band material.

Replacement Parts:

- G40888 - Thrust Bearing
- G42287 - Cutterbar and Handle Assembly

C07569 Bantam Tool



The C07569 is a light duty ratchet tool designed for one handed operation. This tool works well with band, buckles and clips from 1/4" to 3/4" widths, for material thickness of .015" - .030", regardless of material. Tool gives the User the ability to position the handle of the tool in 3 different positions making it versatile, and a speedy installation.

Replacement Parts:

J07599 Thrifttool®



The J07599 Thrifttool® is a small hand held tool that applies tension to 3/16" - 3/8" wide band.



TOOLS

J02069 Pok-It II Tool with Cutter



The J02069 Pok-It II Tool with Cutter has a compact design and ease of use to install 3/16" – 3/8" band and buckle and BAND-IT Jr. clamps. The ratchet design enables a quick strong tensioning for narrow band clamps.

C08569 Bantam Strapping Tool



The C08569 Bantam Strapping Tool is a light duty ratchet tool designed for for palletizing and packaging. Similar to the C07569.

C40099 Ratchet Tool



The C40099 Ratchet Tool is a ratchet tool designed for the band and buckle systems excelling in palletizing and general banding. This tool works best on coated or painted band because of its gripping mechanism.

UL9010 Ultra-Lok®



UL9010 ULTRA-LOK® Corded Tool

Ideal for hose clamping. Electric ULTRA-LOK® Tool clamps 3/4" or 1/2" ULTRA-LOK® band and ULTRA-LOK® preformed clamps. Designed for consistent repeatable tensioning. Adjustable speed and torque. Clamps can be applied four times faster than conventional clamps. Forms lock under full tension. Shear plate available to convert tool from 3/4" to 1/2" ULTRA-LOK® clamps.

UL4000C Ultra-Lok®



UL4000-C ULTRA-LOK® Cordless Tool

Now powered with a Lithium-ion battery, with longer charge and battery life, the UL4000-C battery charge lasts longer with consistent peak performance through the life of the battery.

BAND-IT® Metals Data All values in table are reference only.

Material	201 Stainless Steel	201 1/4 Hard	202 Stainless Steel	301 Stainless Steel	302 Stainless Steel	304 Stainless Steel	316 Stainless Steel	317L 1/4 Hard Stainless Steel	321 Stainless Steel	200/300 Series Stainless Steel	Alloy 400	Alloy 625	Titanium GR1
Specification													
UNS Designation	S20100	S20100	S20200	S30100	S30200	S30400	S31600	S31703	S32100	---	N04400	N06625	R50250
ASTM	A 666	A 666	A 666	A 666	A 666	A 666	A 666	A 240	A 240	---	B 127	B 443	B 265
Principal Alloying Elements, %													
C	.015 Max	.015 Max	.015 Max	.15 Max	.15 Max	.08 Max	.08 Max	.03 Max	.08 Max	---	.3 Max	.10 Max	.08 Max
Mn	5.50 - 7.50	5.50 - 7.50	7.5-10.0	2.0 Max	2.0 Max	2.0 Max	2.0 Max	2.0 Max	2.0 Max	---	2.0 Max	.50 Max	---
P	.06 Max	.06 Max	.06 Max	.045 Max	.045 Max	.045 Max	.045 Max	.045 Max	.045 Max	---	---	.015 Max	---
S	.03 Max	.03 Max	.03 Max	.030 Max	.030 Max	.030 Max	.030 Max	.030 Max	.030 Max	---	0.024 Max	.015 Max	---
Si	.75 Max	.75 Max	.75 Max	1.00 Max	.75 Max	.75 Max	.75 Max	.75 Max	.75 Max	---	0.5 Max	50 Max	---
Cr	16.0-18.0	16.0-18.0	17.0-19.0	16.0-18.0	17.0-19.0	18.0-20.0	16.0-18.0	18.0-20.0	17.0-19.0	---	---	20.0-23.0	---
Ni	3.50-5.50	3.50-5.50	4.0-6.0	6.0-8.0	8.0-10.0	8.0-10.5	10.0-14.0	11.0-15.0	9.0-12.0	---	63.0 Min	58.0 Min	---
N	.25 Max	.25 Max	.25 Max	.10 Max	---	.10 Max	---	.10 Max	.10 Max	---	---	---	.03 Max
O	---	---	---	---	---	---	---	---	---	---	---	---	.18 Max
H	---	---	---	---	---	---	---	---	---	---	---	---	.015 Max
Mo	---	---	---	---	---	---	2.0-3.0	3.0-4.0	---	---	---	8.0-10.0	---
Cu	---	---	---	---	---	---	---	---	---	---	28.0-34.0	---	---
Fe	---	---	---	---	---	---	---	---	---	---	2.5 Max	5.0 Max	.20 Max
Ti	---	---	---	---	---	---	---	---	---	---	---	0.40 Max	Balance
Zn	---	---	---	---	---	---	---	---	---	---	---	0.40 Max	Balance
Al	---	---	---	---	---	---	---	---	---	---	---	---	---
Physical Properties													
Density, Lb/Cu. In.	0.287	0.287	0.287	0.290	0.290	0.290	0.290	0.290	0.286	0.287	0.319	0.305	0.163
Structure	Austenitic	Austenitic	Austenitic	Austenitic	Austenitic	Austenitic	Austenitic	Austenitic	---	Austenitic	---	---	Alpha
Melting Range	2550 - 2650°F	2550- 2650°F	2550- 2650°F	2550- 2590°F	2550- 2590°F	2550- 2590°F	2540 - 2630°F	2540 - 2630°F	2550 - 2635°F	2550- 2650°F	2370- 2460°F	2500 - 2550°F	2500 - 2550°F
Electrical Properties	Non-Magnetic	Non-Magnetic	Non-Magnetic	Non-Magnetic	Non-Magnetic	Non-Magnetic	Non-Magnetic	Non-Magnetic	Non-Magnetic	Non-Magnetic	Slightly Magnetic	Non-Magnetic	Non-Magnetic
Mechanical Properties													
Rockwell Hardness	100 Rb Max	---	100 Rb Max	95 Rb Max	92 Rb Max	92 Rb Max	95 Rb Max	95 Rb Max	95 Rb Min	70-95Rb	68 Rb Max	88-94Rb	64-70Rb
Ultimate Tensile Strength	95,000	125,000	90,000	75,000	75,000	75,000	75,000	115,000	75,000	75,000	70,000	120,000	35,000
Yield Strength	45,000	75,000	38,000	30,000	30,000	30,000	40,000	75,000	30,000	30,000	28,000	60,000	20,000
% of Elongation in 2 inches, Min	40	25	40	40	40	40	35	10	40	30	35	30	24
Corrosion Resistance													
Mild Atmospheric and Fresh Water	Good	Good	Good	Good	Very Good	Very Good	Excellent	Excellent	Excellent	Good	Good	Good	Good
Industrial Atmosphere	Good	Good	Good	Good	Very Good	Very Good	Very Good	Very Good	Very Good	Good	Good	Good	Good
Marine Atmosphere	Fair	Fair	Fair	Fair	Good	Good	Very Good	Very Good	Very Good	Fair	Excellent	Excellent	Good
Salt Water	No	No	No	No	No	No	Good	Good	Good	No	Excellent	Excellent	Good
Mild Chemical	Fair	Fair	Fair	Fair	Good	Good	Good	Very Good	Good	Fair	Good	Good	Good
Oxidizing Chemical	Fair	Fair	Fair	Fair	Good	Good	Good	Good	Good	Fair	Good	Good	Excellent
Reducing Chemical	No	No	No	No	No	No	Good	Good	Good	No	Good	Good	Fair

BAND-IT® Metals Data All values in table are reference only.

Titanium GR2	Galvanized Carbon Steel	403 Stainless Steel	Carbon Steel (Magnus)	AL2003	Aluminum 3003	Alloy 27-7	Alloy AL6XN®	Alloy C276	Alloy 2507	UNS S32760	Alloy 2205	Alloy 718	409 Stainless Steel	430 Stainless Steel	
R50400	---	S40300	---	S32003	A93003	S31277	N08367	N10276	S32750	S32760	S32205	N07718	S40900	S43000	
B 265	A 105, A 695	A 176	---	A 240	B 209	A 240	B 688	B 462	A 240	A 240	A 240	B 637	A-240	A-240	
.08 Max	.35 Max	.15 Max	---	.03 Max	---	.5-1.5	.03 Max	.01 Max	.03 Max	.03 Max	.03 Max	.03 Max	.08 Max	.03 Max	0.12 Max
---	.6-1.05	1.0 Max	---	2.0 Max	1.0-1.5	3.0 Max	---	1.0 Max	1.2 Max	1.0 Max	2.0 Max	.35 Max	1.0 Max	1.00 Max	1.00 Max
---	.04 Max	.04 Max	---	.03 Max	---	.03 Max	.04 Max	.04 Max	0.035 Max	0.03 Max	0.03 Max	.015 Max	0.04 Max	.04 Max	.04 Max
---	.05 Max	.03 Max	---	.02 Max	---	.01 Max	.03 Max	.03 Max	0.02 Max	0.01 Max	0.02 Max	.015 Max	0.02 Max	.03 Max	.03 Max
---	.10-.35	.50 Max	---	1.0 Max	.60 Max	.50 Max	1.0 Max	.08 Max	.80 Max	1.00 Max	1.00 Max	.35 Max	1.00 Max	1.00 Max	1.00 Max
---	---	11.5-13.0	---	19.5-22.5	---	20.5-23.0	20.0-22.0	14.5-16.5	24-26.0	24.0-26.0	22.0-23.0	17.0-21.0	10.50-11.75	16.0-18.0	16.0-18.0
---	---	.60 Max	---	3.0-4.0	---	26.0-28.0	23.5-25.5	Balance	6.0-8.0	6.0-8.0	4.5-6.5	50.0-55.0	0.5 Max	.75 Max	.75 Max
.03 Max	---	---	---	.14-.20	---	.3-.4	.18-.25	---	.24-.32	.20-.30	.14-.20	---	---	---	---
0.25 Max	---	---	---	---	---	---	---	---	---	---	---	---	---	---	---
.015 Max	---	---	---	---	---	---	---	---	---	---	---	---	---	---	---
---	---	---	---	1.5-2.0	---	---	6.0-7.0	15.0-17.0	3.0-4.0	3.0-4.0	3.0-3.5	2.8-3.3	---	---	---
---	---	---	---	---	.20 Max	---	.75 Max	---	---	---	---	---	---	---	---
.30 Max	---	---	---	Balance	.70 Max	Balance	---	4.0-7.0	---	---	---	Balance	---	---	---
Balance	---	---	---	---	---	---	---	---	---	---	---	.65-1.15	---	---	---
Balance	---	---	---	---	.10 Max	---	---	---	---	---	---	---	---	---	---
---	---	---	---	---	Balance	---	---	---	---	---	---	.2-.8	---	---	---
0.163	0.283	0.282	---	0.279	0.099	0.290	0.291	0.321	0.282	0.278	0.282	0.296	0.282	0.282	
Alpha	Ferritic	Martensitic	Ferritic	Duplex	---	Austenitic	Austenitic	Duplex	Duplex	Duplex	Duplex	Duplex	Ferritic	Ferritic	
2500 - 2550°F	---	2720	---	---	1190	---	2500 - 2550°F	---	---	---	---	2200-2450	2500-2550	2500-2550	
Non-Magnetic	Magnetic	Ferromagnetic	Magnetic	Ferromagnetic	---	---	---	---	---	---	---	---	---	Magnetic	
64-70Rb	80-95Rb	96 Rb Max	---	31 Rc Max	40 Brinell	90 Rb Typ	100 Rb Max	---	32 Rc Max	290 HB max	31 Rc max	109 Rb Min	88 Rb Max	89 Rb Max	
50,000	84,000	70,000	152,500	100,000	22,000	112,000	100,000	100,000	116,000	108,000	95,000	185,000	55,000	65,000	
40,000	80,000	30,000	---	70,000	21,000	52,000	45,000	41,000	80,000	80,000	65,000	150,000	25,000	30,000	
20	5	25	---	25	8	40	30	40	15	25	25	12	20	22	
Good	Good/Fair	Good	Fair/Poor	Excellent	---	Very Good	Good	Very Good	Very Good	Very Good	Very Good	Excellent	Good	Good	Good
Good	Fair	Good	Fair	Very Good	Good	Excellent	Good	Excellent	Very Good	Very Good	Very Good	Very Good	Good	Good	Good
Good	Poor	Poor	Poor	Very Good	Good	Excellent	Excellent	Excellent	Very Good	Very Good	Very Good	Very Good	Excellent	Poor	Poor
Good	No	No	No	Good	---	Excellent	Excellent	Excellent	Very Good	Very Good	Very Good	Very Good	Excellent	No	No
Good	No	Fair	No	Good	---	Good	Good	Good	Good	Good	Good	Good	Good	Fair	Fair
Excellent	No	Fair	No	Good	---	Good	Good	Good	Good	Good	Good	Good	Good	Fair	Fair
Fair	No	Fair	No	Good	---	Good	Good	Good	Good	Good	Good	Good	Good	Good	No



INDEX

Part No.	Page	Part No.	Page	Part No.	Page	Part No.	Page
A92079.....	20	BFES-A1230-041.....	18	BFVC-A0830-029-P500... 16		C15399.....	8
AE4259.....	10	BFES-A1230-048.....	18	BFVC-A0830-029-P550... 16		C15499.....	8
AE4269.....	10	BFES-A1230-055.....	18	BFVC-A0830-029-P600... 16		C15599.....	8
AE4279.....	10	BFES-A1230-069.....	18	BFVC-A0830-029-P700... 16		C15699.....	8
AE4329.....	9	BFES-A1230-076.....	18	BFVC-A0830-029-P800... 16		C16189.....	7
AE4339.....	9	BFES-A1230-090.....	18	BFVC-A0830-029-P900... 16		C16389.....	7
AE4349.....	9	BFES-A0830-020-P900C... 17		BFPC-J1025-030-U..... 16		C17199.....	7
AE4359.....	9	BFES-A0830-024-P900C... 17		C00169.....	6,17,22	C17399.....	7
AE4369.....	9	BFES-A0830-027-P900C... 17		C00369.....	17,22	C18189.....	7
AE4529.....	9	BFES-A0830-034-P900C... 17		C00689.....	22	C18389.....	7
AE4539.....	9	BFES-A0830-041-P900C... 17		C01687.....	22	C19199.....	7
AE4549.....	9	BFES-A0830-048-P900C... 17		C01899.....	22	C19399.....	7
AE4559.....	9	BFES-A0830-055P900C... 17		C05887.....	22	C20499.....	5
AE4569.....	9	BFES-A0830-069-P900C... 17		C04986.....	22	C204B9.....	5
AE0609.....	21	BFES-A0830-076-P900C... 17		C07569.....	6,17,22	C204BB.....	11
AE4759.....	10	BFES-A0830-090-P900C... 17		C07087.....	22	C204C9-P000..... 6	
AE4769.....	10	BFES-A0830-020-P900C... 17		C08569.....	23	C204C9-P100..... 6	
AE4779.....	10	BFES-A1230-024-P900C... 17		C12799.....	7	C204C9-P200..... 6	
BFEC-A0830-029-U..... 16		BFES-A1230-027-P900C... 17		C12899.....	7	C204C9-P300..... 6	
BFEC-A0830-029-P000.... 16		BFES-A1230-034-P900C... 17		C12999.....	7	C204C9-P302..... 6	
BFEC-A0830-029-P100.... 16		BFES-A1230-041-P900C... 17		C13099.....	7	C204C9-P400..... 6	
BFEC-A0830-029-P200.... 16		BFES-A1230-048-P900C... 17		C13199.....	7	C204C9-P500..... 6	
BFEC-A0830-029-P300.... 16		BFES-A1230-055-P900C... 17		C13399.....	7	C204C9-P550..... 6	
BFEC-A0830-029-P302.... 16		BFES-A1230-069-P900C... 17		C13499.....	7	C204C9-P600..... 6	
BFEC-A0830-029-P400.... 16		BFES-A1230-076-P900C... 17		C13599.....	7	C204C9-P700..... 6	
BFEC-A0830-029-P500.... 16		BFES-A1230-090-P900C... 17		C13699.....	7	C204C9-P800..... 6	
BFEC-A0830-029-P550.... 16		BFPC-J1025-030-P000... 16		C14499.....	7	C204C9-P900..... 6	
BFEC-A0830-029-P600.... 16		BFPC-J1025-030-P100... 16		C14599.....	7	C20599.....	5
BFEC-A0830-029-P700.... 16		BFPC-J1025-030-P200... 16		C14699.....	7	C205G9.....	5
BFEC-A0830-029-P800.... 16		BFPC-J1025-030-P300... 16		C14899.....	7	C20699.....	5
BFEC-A0830-029-P900.... 16		BFPC-J1025-030-P302... 16		C14999.....	7	C206BB.....	11
BFES-A0830-020..... 18		BFPC-J1025-030-P400... 16		C15099.....	7	C206C9-P900..... 6	
BFES-A0830-024..... 18		BFPC-J1025-030-P500... 16		C14599-P000..... 6		C206R9.....	5
BFES-A0830-027..... 18		BFPC-J1025-030-P550... 16		C14599-P100..... 6		C25299.....	5,8
BFES-A0830-034..... 18		BFPC-J1025-030-P600... 16		C14599-P200..... 6		C25399.....	5
BFES-A0830-041..... 18		BFPC-J1025-030-P700... 16		C14599-P300..... 6		C25499.....	5
BFES-A0830-048..... 18		BFPC-J1025-030-P800... 16		C14599-P302..... 6		C25599.....	5
BFES-A0830-055..... 18		BFPC-J1025-030-P900... 16		C14599-P400..... 6		C25699.....	5
BFES-A0830-069..... 18		BFVC-A0830-029-U..... 16		C14599-P500..... 6		C27599.....	11
BFES-A0830-076..... 18		BFVC-A0830-029-P000... 16		C14599-P550..... 6		C27699.....	11
BFES-A0830-090..... 18		BFVC-A0830-029-P100... 16		C14599-P600..... 6		C27799.....	11
BFES-A1230-020..... 18		BFVC-A0830-029-P200... 16		C14599-P700..... 6		C30399.....	8
BFES-A1230-024..... 18		BFVC-A0830-029-P300... 16		C14599-P800..... 6		C30499.....	8
BFES-A1230-027..... 18		BFVC-A0830-029-P302... 16		C14599-P900..... 6		C30599.....	8
BFES-A1230-034..... 18		BFVC-A0830-029-P400... 16		C15199.....	8	C30699.....	8



INDEX

Part No.	Page	Part No.	Page	Part No.	Page	Part No.	Page
C35399.....	8	C90599.....	9	ID2836.....	20	O316S9.....	17
C35499.....	8	C90699.....	9	ID2846.....	20	O325S9.....	17
C35599.....	8	C91399.....	9	ID2906.....	20	O32S99.....	17
C35699.....	8	C91499.....	9	ID3009.....	20	SX0073.....	12
C40099.....	17,23	C91599.....	9	ID4002.....	21	SX0090.....	12
C40299.....	9	C91699.....	9	ID4059.....	21	SX0130.....	12
C40399.....	9	D00189.....	12,13	ID4409.....	20	SX0220-100.....	12
C403Y9.....	9	D00299.....	12	ID4419.....	20	T30069.....	17
C40499.....	9	D00499.....	12	ID4429.....	20	UL1018.....	15
C404B9.....	9	D00799.....	12,13	ID4609.....	20	UL1024.....	15
C40599.....	9	D00889.....	12,13	ID4619.....	20	UL1028.....	15
C405G9.....	9	D00999.....	12	ID4629.....	20	UL1032.....	15
C40699.....	9	D02189.....	12,13	J02069.....	23	UL1036.....	15
C406R9.....	9	D02299.....	12	J07599.....	22	UL1046.....	15
C41399.....	10	D04099.....	12,13	J10099.....	11	UL1056.....	15
C42499.....	10	D04599.....	12,13	L15399.....	8	UL1070.....	15
C41499.....	10	D31099.....	12,13	L15499.....	8	UL1086.....	15
C41599.....	10	D31599.....	12,13	L15599.....	8	UL1096.....	15
C41699.....	10	D50089.....	12	L15699.....	8	UL1106.....	15
C44499.....	9	D50489.....	12	L20399.....	18	UL1116.....	15
C444B9.....	9	D51089.....	12	L20499.....	18	UL2020.....	15
C44599.....	9	D51289.....	12	L20799.....	18	UL2024.....	15
C445G9.....	9	D51389.....	12	L20899.....	18	UL2028.....	15
C44699.....	9	G40269.....	22	L21099.....	18	UL2032.....	15
C446R9.....	9	G40888.....	22	L22199.....	18	UL2036.....	15
C45299.....	9	G42287.....	22	L22999.....	18	UL2040.....	15
C45399.....	9	G43099.....	5	L24299.....	18	UL2044.....	15
C45499.....	9	G43199.....	5	L24699.....	18	UL2048.....	15
C45599.....	9	G43299.....	5	L26399.....	18	UL2052.....	15
C45699.....	9	G44099.....	5	L27199.....	18	UL2060.....	15
C72099.....	5	G44199.....	5	L27399.....	18	UL2068.....	15
C72299.....	5	G44299.....	5	L28499.....	18	UL2076.....	15
C72499.....	5	ID1009.....	20	L28899.....	18	UL2084.....	15
C72599.....	5	ID1019.....	20	L29099.....	18	UL2092.....	15
C72699T.....	5	ID1029.....	20	L29299.....	18	UL2120.....	15
C80399.....	10	ID1039.....	20	M09387.....	14	UL2150.....	15
C80499.....	10	ID1049.....	20	M15699.....	19	UL2175.....	15
C80599.....	10	ID1059.....	20	M15799.....	19	UB2549.....	15
C85399.....	10	ID2006.....	20	M15899.....	19	UB2569.....	15
C85499.....	10	ID2026.....	20	M21099.....	19		
C85599.....	10	ID2036.....	20	M21899.....	19		
C85699.....	10	ID2046.....	20	O10S99.....	17		
C80699.....	10	ID2056.....	20	O16S99.....	17		
C90399.....	9	ID2816.....	20	O20S99.....	17		
C90499.....	9	ID2826.....	20	O311S9.....	17		

BAND-IT[®]

ENGINEERED CLAMPING SOLUTIONS

More Clamps
More Markets
More Solutions!

Aerospace
Automotive
Cable TV
Coal & Power
Construction
Electrical
Government
Industrial
Marine
Military
Mining
Municipal
Oil & Gas
Petrochemical
Pole & Signal Mounting
Ship Building
Solar
Subsea
Telecommunications
Traffic
Utility



IDEX

Copyright BAND-IT[®]
A Unit of IDEX Corporation
Denver, Colorado U.S.A. 2014 All rights reserved.

WWW.BAND-IT-IDEX.COM