



We have it,
because
you need it!

...of course!

wamkey.com



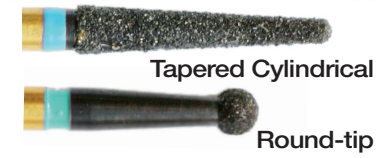
2015
V07-15

**DON'T LIKE
CUTTING
ZIRCONIA?**



**ZirCator
IS
YOUR
SOLUTION!**

ZirCator



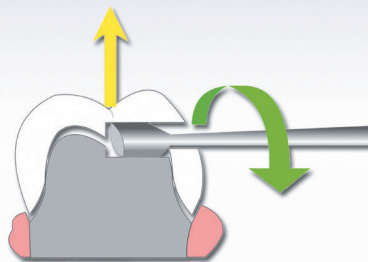
WHAT IF REMOVING A CROWN OR BRIDGE WAS AS SIMPLE AS THIS?

- Over 90% clinically efficient per Dental Advisor Study of 306 cases (USA)
- Unique application for endo Remove & re-use crown after treatment

WAMkey® is a set of three instruments designed to remove crowns quickly, easily and without damaging the margins or the bulk of the crown. The clinician drills a small horizontal hole through the crown and enlarges it until seeing the level of the cement layer. Then a tunnel is drilled through this window until reaching the centre of the preparation.

Then the **WAMkey**®, which has an oval profile, is inserted into the hole and rotated to raise the crown along its vertical axis.

Crowns and bridges can be reused after any underlying treatment has been completed. When replaced, the access hole is simply sealed with an appropriate shade of composite.



WAMkey®

CROWN & BRIDGES

QUICK

Traditional methods are time consuming and expensive : very simply, **WAMkey**®, enables you to **remove a crown in 1 or 2 minutes.**

When possible, the temporary or permanent resetting of the original crown will result in substantial time savings for you.

Avoiding cutting the whole crown, you also **save your rotative materials** (handpieces, burs,...).

GENTLE

Traditional methods involve traction or rocking movements. Thus, they generate major risks of fractures.

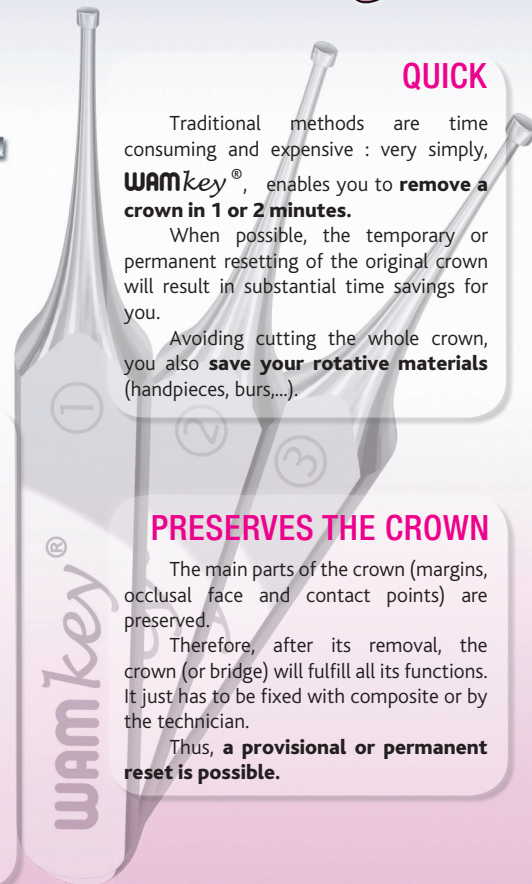
Without any impact, the pressure on the abutment is gradually applied by the **WAMkey**® until the crown is removed. **WAMkey**® ensures your patient **an absolutely painfree operation.** The pressure induces no more pain than that felt when chewing a hard toffee.

PRESERVES THE CROWN

The main parts of the crown (margins, occlusal face and contact points) are preserved.

Therefore, after its removal, the crown (or bridge) will fulfill all its functions. It just has to be fixed with composite or by the technician.

Thus, **a provisional or permanent reset is possible.**





WAM'X®

DRILL, PRESS, THE POST IS REMOVED!

ROOT SAFETY

Inspired by the success and proven mechanical principle of **Wamkey®** (separation and action along the «vertical» axis of the prosthesis, free trajectory of the post), **WAM'X®** minimizes the risk of fracture for the root.

Without any anaesthesia, the operation is totally painless for your patient.

QUICK & EASY TO USE

Forget about all complicated devices, random and uncomfortable surgery! Stop wasting time!

Easy to use, **WAM'X®** enables you to remove a post in no more than 5 to 10 minutes.

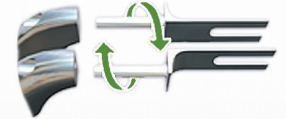
FLEXIBILITY

Thanks to its unique design, **WAM'X®** is easy to use and efficient on all teeth, even posterior ones.

CHARACTERISTICS

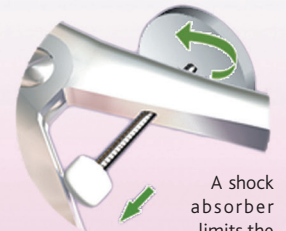


The inverted plier with curved extremities allows access to all teeth, even the deepest posterior ones.



Mobility of the instrument's prongs enables the post to move freely and so to find the

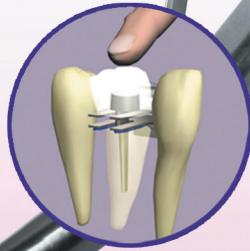
less resistant way during removal. 3 different sizes of interchangeable prongs offer the best possible solution to any case encountered (post section and space between adjacent teeth).



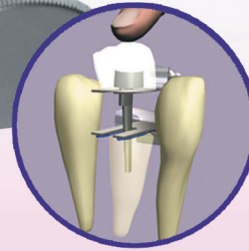
A shock absorber limits the opening of the plier during and after the post removal.



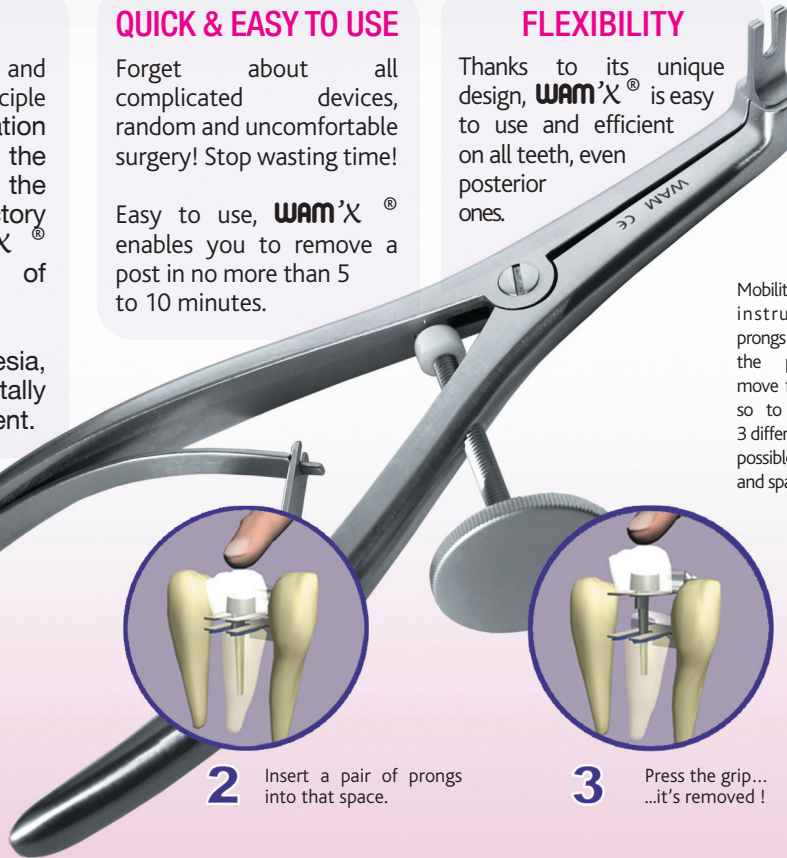
1 Drill a space between the prosthesis (into the metal) and the root.



2 Insert a pair of prongs into that space.



3 Press the grip... ..it's removed!





INTRO KITS FOR CROWNS, BRIDGES & POST REMOVAL



REF.



WAMkey Intro Pack

The reference in terms of crown and bridge removal !

Complete kit includes :
3 assorted keys
3 Ceramometalivore burs
1 CD Rom instruction for use

Fully autoclavable.

WKP



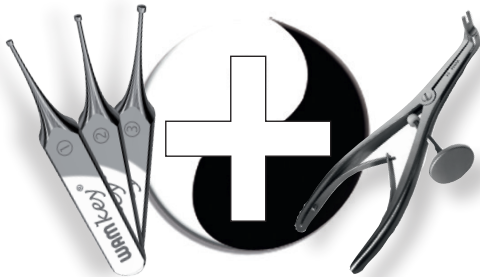
WAM'X Intro Pack

Post-core and richmond crown removal made as easy as child's play!

Complete kit includes :
1 ultra high quality forceps
3 assorted pairs of prongs
3 assorted pairs of silicone slice
3 Ceramometalivore burs
1 CD Rom instruction for use

Fully autoclavable.

WXP



ZEN Intro Pack (WAMkey + WAM'X)

Just for the pleasure to save money !

All you need to remove crowns, bridges and posts easily.

Complete kit include :
3 assorted keys
3 Ceramometalivore burs
1 ultra high quality forceps
3 assorted pairs of prongs
3 assorted pairs of silicone slice
1 CD Rom instruction for use

Fully autoclavable.

WZP



CROWNS, BRIDGES & POST REMOVAL - REFILLS

REF.

wamkey



WAMkey n°1 refill (small)
Fully autoclavable.

WK1



WAMkey n°2 refill (medium)
Fully autoclavable.

WK2



WAMkey n°3 refill (large)
Fully autoclavable.

WK3

wam'X



WAM'X n°1 refill (small)
Fully autoclavable.

WXE1



WAM'X n°2 refill (medium)
Fully autoclavable.

WXE2



WAM'X n°3 refill (large)
Fully autoclavable.

WXE3



3 assorted pairs of autoclavable silicone slices - refills for WAM'X. Fully autoclavable.

WXR6



AMATEUR OR EXPERT

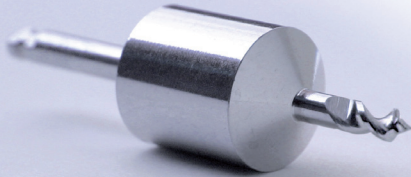
DO NOT COMPROMISE
on speed nor safety

NEW!

MD Guide



REF.



Don't change anything with your current procedure. MD Guide offers you a mesio-distal guidance when placing implants. Each of the 5 drills features a ring with a diameter that matches the mesio-distal dimension of the tooth you have to replace. When placing this ring against the adjacent tooth, you are sure that your implant will be perfectly positioned. MDGuide avoids having to make a surgical guide.

If you have to place several implants, place one of the 5 analogs (non-drilling guide) in the first orifice made as previously explained. This analog will simulate the presence of the future prosthetic tooth and can be used to create the next hole with another MD Guide. If necessary, continue the steps to even make a full arch !

MD Guide INTRO KIT



This kit includes 5 assorted drills and 5 assorted analogues.

- Drilling guide Ø 6,0mm - drilling length 7,5mm
- Drilling guide Ø 7,5mm - drilling length 7,5mm
- Drilling guide Ø 9,0mm - drilling length 7,5mm
- Drilling guide Ø 10,5mm - drilling length 7,5mm
- Drilling guide Ø 12mm - drilling length 7,5mm
- Non drilling guide 6.0mm
- Non drilling guide 7.5mm
- Non drilling guide 9.0mm
- Non drilling guide 10.5mm
- Non drilling guide 12.0mm
- Surgical box for 15 drills
- Instruction for use

FCP

SURGICAL BOX FOR DRILLS

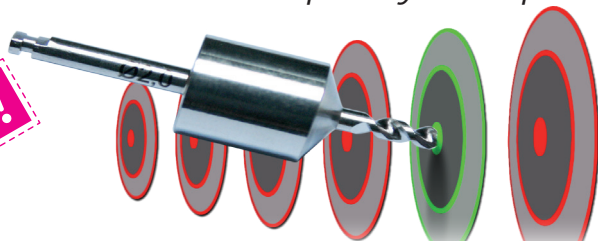


Surgical box for 15 drills 60x80x60. Fully autoclavable (135 °C/275 °F).

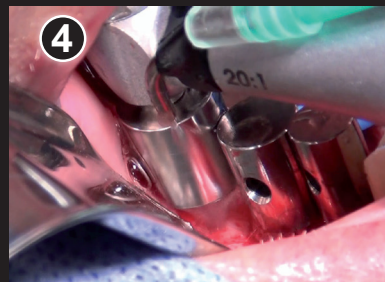
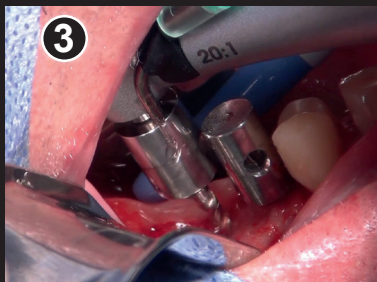
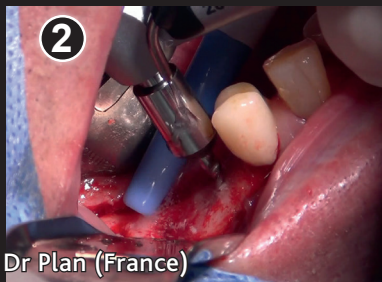
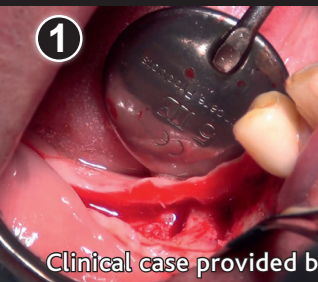
BTCHIR608060

Don't take the chance to misplace your implant

NEW!

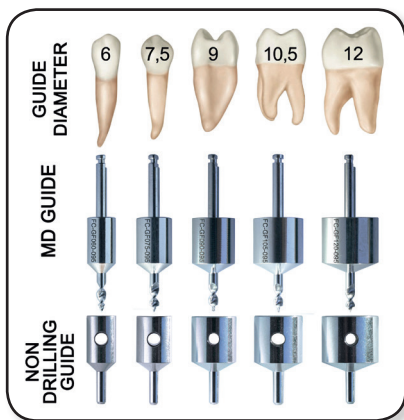


**DRILL
EXACTLY**
...*freehand!*



Clinical case provided by Dr Plan (France)

- 1 Pre-operative situation. 2 implants must be placed in order to support a bridge 44-46.
- 2 The pilot hole is drilled on 44. The diameter of the pilot drill matches the mesio-distal size of the crown, so this first implant will be perfectly aligned on the crown.
- 3 The first pilot drill is replaced by a «virtual» crown. A second pilot hole is then drilled with an MD Guide matching the mesio-distal size of the pontic.
- 4 Finally, a third pilot hole is created for the second implant. The spacing and the parallelism between the 2 implants are perfect, and we can even visualize the emergence profiles.



MD Guide

- ▶ **DON'T CHANGE ANYTHING WITH YOUR CURRENT PROCEDURE**
- ▶ **2 IN 1: PILOT DRILL AND SURGICAL GUIDE IN ONE!**
- ▶ **ELIMINATE THE STRESS AND THE FRUSTRATION OF MISPLACING YOUR IMPLANT!**



REFILLS

REF.

FORETS



Drilling Guide

Drilling tip diameter 2.0 mm - drilling length 7.5 mm - Guide diameter 6.0 mm

FC-GF060-095



Drilling Guide

Drilling tip diameter 2.0 mm - drilling length 7.5 mm - Guide diameter 7.5 mm

FC-GF075-095



Drilling Guide

Drilling tip diameter 2.0 mm - drilling length 7.5 mm - Guide diameter 9.0 mm

FC-GF090-095



Drilling Guide

Drilling tip diameter 2.0 mm - drilling length 7.5 mm - Guide diameter 10.5 mm

FC-GF105-095



Drilling Guide

Drilling tip diameter 2.0 mm - drilling length 7.5 mm - Guide diameter 12.0 mm

FC-GF120-095

ANALOGUES



Non Drilling Guide

Guide diameter 6.0 mm

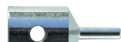
FC-GNF060



Non Drilling Guide

Guide diameter 7.5 mm

FC-GNF075



Non Drilling Guide

Guide diameter 9.0 mm

FC-GNF090



Non Drilling Guide

Guide diameter 10.5 mm

FC-GNF105



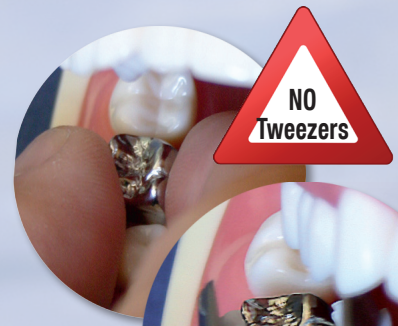
Non Drilling Guide

Guide diameter 12.0 mm

FC-GNF120

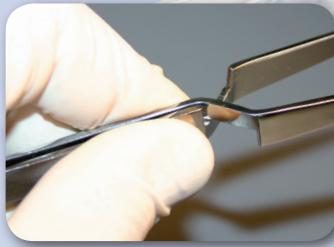
WAM' Tweezers®

KEEP EYE CONTACT!



Easy to use

Closing or opening WAM'Tweezers is effortless. To release the object held, a simple squeeze on the handles is all it takes. Unlike conventional self-locking tweezers, there is absolutely no need to struggle with any mechanisms.



Efficient

Once the object has been grasped between the jaws, your assistant can hand you the tweezers without the slightest risk of accidental release, or even place them on the tray and go about other tasks.



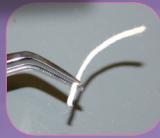
When in their rest position, WAM'Tweezers' cross-locking jaws ensure perfect grip on all small objects (cotton, wedges, posts, paper points, etc...). There's no risk of unwanted release.

Why not spare YOUR ENERGY?

Unlike WAM'Tweezers, every time you grasp a small object with conventional tweezers, you trigger nerve impulses and use physical energy that seem minimal but by the end of the day, due to repetition, can account for a substantial proportion of your fatigue.

Don't lose your grip!

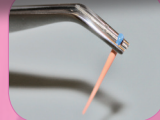
Classic Tweezers®



Featuring serrated tips, *Classic Tweezers®* are the most versatile gripping tool around. They offer a real advantage over conventional tweezers, enabling you to grasp just about anything (prosthetic devices, cotton, keys, thread, and so on).

Endo Tweezers® feature lengthwise and crosswise grooves making it easier to handle all cylindrical objects. They are particularly ideal for carrying Gutta-Percha cones, posts, paper points, etc.

Endo Tweezers®



Geko Tweezers®



Even on posterior teeth, placing a crown with Geko Tweezers® is as easy as child's play. Autoclavable ultra-flexible silicone tips and Geko sticky paste (included in intro kit) guarantee perfect grip and time-savings when removing excess cement. Discover how on www.wamkey.com.

TWEEZERS

REF.



Geko Tweezers Intro Pack

Self-locking tweezers : ideal for crowning back teeth.
 - No risk of unwanted release
 - No effort to release the crown
 - The ultra flexible silicone tips and the sticky Geko Paste securely hold any crown
 - An adjusting screw prevents the crown from slipping between the tips

This kit contains :
 1 x Geko Tweezers (autoclavable)
 20 x silicone tips (autoclavable)
 1 x 5ML Geko Paste syringe

GEKT1

Geko
Silicone
Tips



Ultra flexible silicone tips : perfectly hold most crowns.
 Contains 20 refills. Fully autoclavable.

GEKEM20

Geko
Paste



Sticky paste : enables you to hold and place all complex crowns, inlays, onlays, veneers,...
 1 x 5ML syringe of Geko Paste.

GEKP

Classic
Tweezers



You will never be able to work without your Classic Tweezers. These cross-over action tweezers allow you to handle multiple things like posts, paper-points, articulating paper, cotton,... and prevent from dropping them ! Simply press on the handle : the item is released ! Fully autoclavable.

CT

Endo
Tweezers



In addition to benefiting from the advantages of the Classic Tweezers (safety catch and easy opening) these self locking tweezers come with **longitudinal and transversal grooves**, allowing an easier use with long and cylindrical items, especially posts and gutta-percha tips. Very quickly they become **indispensable**. Fully autoclavable.

ET

PREHENSION WITHOUT APPREHENSION

Geko Tweezers[®] by WAM

HANDLE YOUR CROWNS SECURELY

SECURE & EASY TO USE

With their cross-over design, Geko Tweezers hold any item passively and securely. The crown can be release by a simple pressure on the handles.

SAVES A LOT OF TIME

- 1- Thanks to a very secure handling, you can apply a separator (Vaseline[®],...) on mesial and distal sides of the crown to prevent the cement from sticking to it. Excess cement comes off instantly.
- 2- Once the object has been grasped between the jaws, your assistant can hand you the tweezers securely or even place them on the tray and go about other tasks.



Ultra-flexible silicone tips : securely handles most crowns. Autoclavable.



Sticky paste : allows to handle more complex crowns (usually low ones), veneers, inlays, onlays, etc.



Adjustable screw keeps the pressure and the distance constant between the tips. Prevents the crown from slipping between the tips.



And more...



INSTRUMENTS

REF.

Raptor



Any difficulties to remove matrices from composite restorations ? Raptor will never let go ! Its thin design will also allow you to grasp securely anything small (fragments, broken instruments, needles, silver cones,...)

Fully autoclavable

RPT

Omni's



Much thicker and rigid than usual scalers, this curette is incredibly multi-purpose and resistant ! One end allows you to scrape, loosen and remove temporaries, while the other end features three incomparable edges useful for a variety of purposes such as eliminating excess cement, composite, etc.

Once you've tried it, you'll want one for every tray.

OMNIS n°1 : pushing edge
OMNIS n°2 : pulling edge

Fully autoclavable

OM1



OM2

A REAL MUST HAVE

Omnis, the HEAVY DUTIES tool !



- Remove excess cement (permanent or temporary) and amalgam.
- Scrape excess adhesive or composite



- Sculpt amalgams and composite fillings



- Remove a temporary crown, bridge, Stellite, tooth cap implant etc...

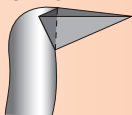


OMNIS WILL ALSO ENABLE YOU TO REMOVE CAVIT FILLINGS AND OTHER TEMPORARY CEMENT FILLINGS, IRM AND SEMI-HARD RESIN TEMPORARY FILLINGS, ETC...

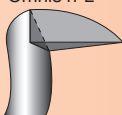


Fully autoclavable.
Omnis n°1: Pushing edge
réf. OM1
Omnis n°2: Pulling edge
réf. OM2

Omnis n°1



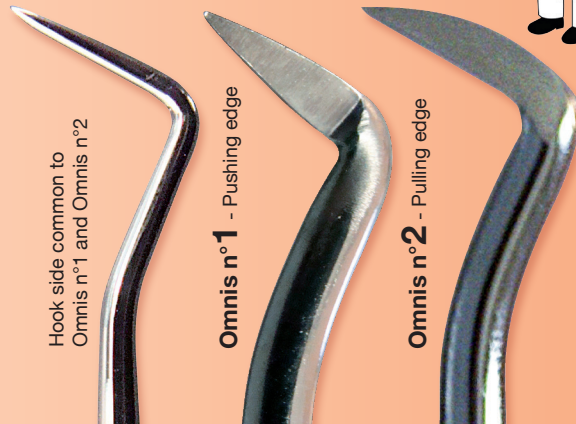
Omnis n°2



Hook side common to Omnis n°1 and Omnis n°2

Omnis n°1 - Pushing edge

Omnis n°2 - Pulling edge



3 times faster

5 times longer

Preserve your hand-pieces*

Prevent from shattering the porcelain*



ONE PIECE Tungsten Carbide Burs

4 mm



8 mm



* For far better results, we strongly recommend you to use these burs with High-speed electric contra-angles (red or orange) rather than air-turbines (more torque)

BURS: CERAMOMETALIVORE

REF.



Cutting tip length : 4mm

Stop using several burs when dealing with porcelain and metal. **This one piece bur cuts everything that gets in its way !** (metal, porcelain, enamel, dentin...) without vibrating like other burs. Less handpiece wear. Autoclavable, long life. Fully autoclavable.

(1 bag of 25 Ceramometalivore burs)

FR-CMV25



Cutting tip length : 8mm

Cuts through metal and ceramic like the standard version, but its cutting edge is twice as long (8 mm instead of 4 mm).

Ideal for crown prep using the peeling method (check our website).

The CVM is also ideal for surgery and canal access preparation.

Fully autoclavable.

(1 bag of 5 Ceramometalivore Ultra burs)

FR-CMVU5

For far better results, we strongly recommend you to use these burs with High-speed electric contra-angles (red or orange) rather than air-turbines (more torque).

NEW!

BURS: ZIRCATOR

REF.



ZirCator

EFFORTLESSLY cuts through zirconia

Quit wasting precious hours cutting zirconia!

Developed with leading-edge technology,

ZirCators cut through zirconia effortlessly, without damaging your handpiece.

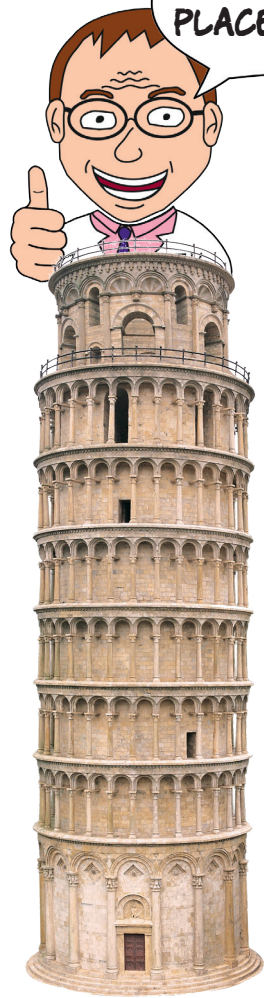
Tip: To spare your burs, reduce cutting by using **wamkey**® for crown removal.

ZirCator Tapered Cylindrical		Tapered Cylindrical ZirCator: medium grain, 1.8mm diameter, pack of 4. Autoclavable at 135 °C/275 °F.	FR-ZIRCCC18M-4
		Tapered Cylindrical ZirCator: medium grain, 1.8mm diameter, pack of 20. Autoclavable at 135 °C/275 °F.	FR-ZIRCCC18M-20
ZirCator Round-tip		Round-tip ZirCator: medium grain, 1.8mm diameter, pack of 4. Autoclavable at 135 °C/275 °F.	FR-ZIRCB18M-4
		Round-tip ZirCator: medium grain, 1.8mm diameter, pack of 20. Autoclavable at 135 °C/275 °F.	FR-ZIRCB18M-20

APPROXIMATE
PLACEMENT



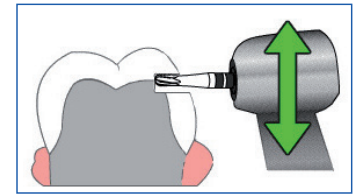
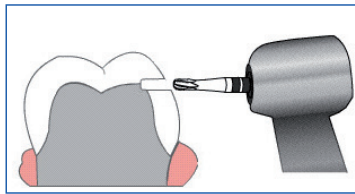
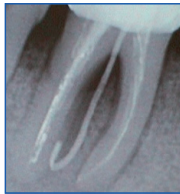
ACCURATE
PLACEMENT



MD Guide aligns your implant accurately with your future restoration. Your implants are perfectly parallel.

The complex block features a white tray of dental guides with various sizes labeled (Ø6, Ø7.5, Ø9, Ø10.5, Ø12) and the WAM logo and website (wamkey.com). Below the tray is a large, detailed illustration of a dental implant being placed into a cross-section of a jawbone, showing the implant's alignment and the surrounding bone structure.

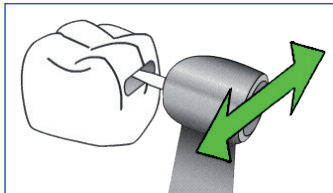
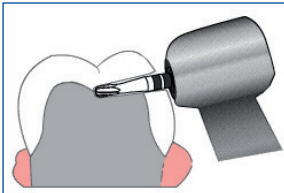
WAMkey® clinical case : Endodontic Use of the WAMkey®



This clinical case demonstrates the use of the WAMkey for endodontic treatments. Instead of drilling through the occlusal surface of the crown, the crown is removed using WAMkey. This will allow for a better diagnosis and make sure there's no crack or decay under the crown. It will also allow for easier access to the canals.

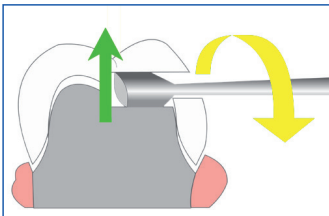
First, a window is made at the estimated junction (cement level) between the occlusal side of the preparation and the framework.

The window is then enlarged in the crown until the practitioner can visualize or feel (different hardness) the prep/framework junction.



WITH SUCH A POOR PROGNOSIS, WHAT AN EXCELLENT COMPROMISE FOR THE PATIENT AND FOR THE DENTIST !!!

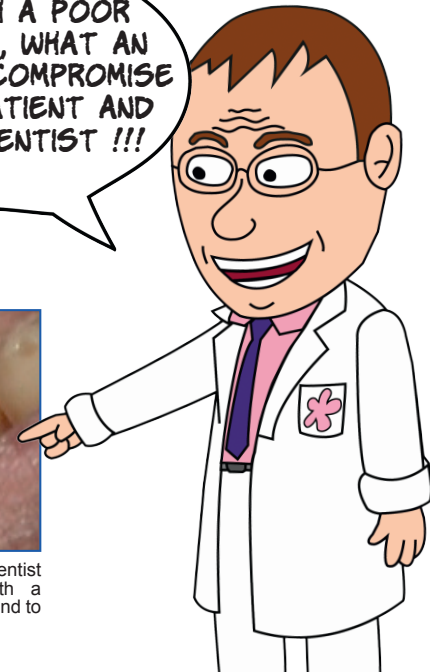
Once the window is made, the dentist can now drill a thin channel in the cement to the center of the prep and then enlarge it in order to get an oval shape so it will match the shape of the working tip of the WAMkey.



The dentist inserts the WAMkey tip into the end of the channel and induces a quarter turn to the handle in order to pop the crown off instantly.

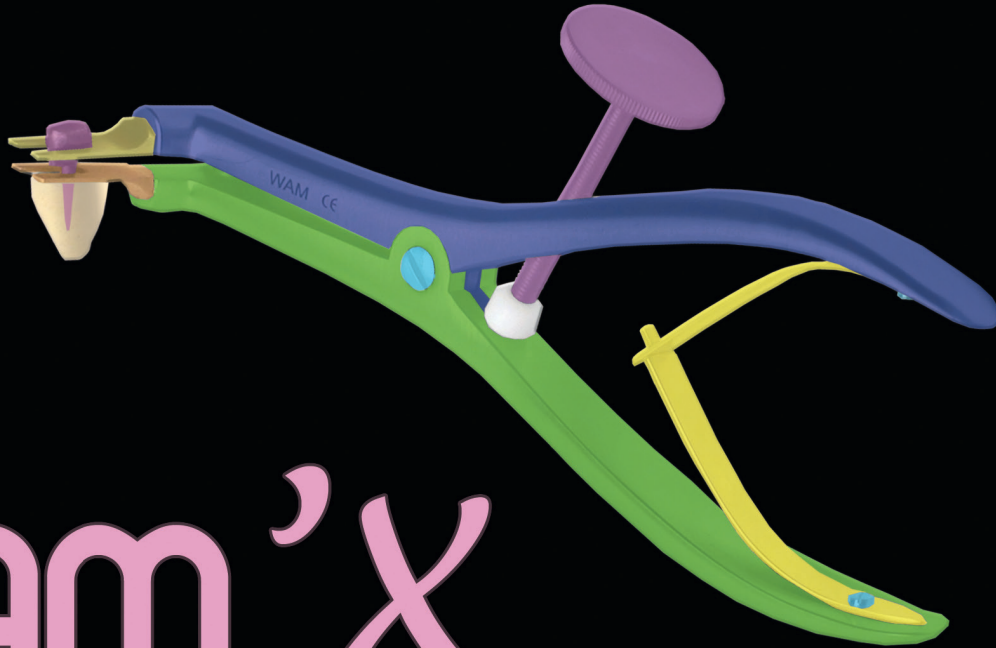


Once the treatment finished, the dentist decided to repair this crown with a composite (after silane and opaquer) and to recement it permanently.



REMOVE A POST?

CHILD'S PLAY!



WAM 'X

Easy * efficient * riskfree



wamkey.com

LOOK
FOR
THE
INTRUDER...



**PROTECT
YOUR MOST
IMPORTANT TOOLS**



XRP ★★★
XRAY PROTECTION GLOVES

Latex free



RP X-RAY PROTECTION GLOVES

NEW!

REF.



LATEX FREE



Do you sometimes have to hold the X-ray sensor for some of your patients such as young children, elderly patients, patients with disabilities, etc.?

If so, you should protect your hands. These gloves stop up to 75% of the radiation (with conventional 60kv dental X-ray system) and still allow the necessary sense of touch to handle the sensor properly. In order to use the gloves multiple times, simply place your conventional examination glove over this glove.


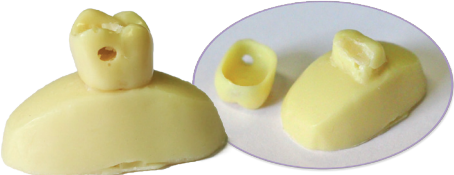




XRP X-RAY PROTECTION GLOVES	7 (XS)	1 pair of latex free X-ray Protection gloves size 7* (Extra Small)	GXP370
	7,5 (S)	1 pair of latex free X-ray Protection gloves size 7,5* (Small)	GXP375
	8 (M)	1 pair of latex free X-ray Protection gloves size 8* (Medium)	GXP380
	8,5 (L)	1 pair of latex free X-ray Protection gloves size 8,5* (Large)	GXP385
	9 (XL)	1 pair of latex free X-ray Protection gloves size 9* (Extra Large)	GXP390

* Visit our website for videos : www.wamkey.com
 For a correct fit, select half size larger than your conventional gloves.

DEMO TOOLS

REF.

<p>MACRO MODEL WAMKEY</p>		<p>Large demo tooth (12cm - 4"1/2) in resin for <i>WAMkey</i>® (hole premade) + 1 large demo <i>WAMkey</i>® in metal.</p>	<p>DEMDENT-G</p>
<p>REAL SIZE MODEL WAMKEY</p>		<p>Real size demo crown and abutment in resin for <i>WAMkey</i>® (premade hole) and Geko Tweezers®.</p>	<p>DEMDENT-P</p>
<p>REAL SIZE MODEL WAM'X</p>		<p>Real size demo cast-post in NiChr for <i>WAM'X</i>® (slot premade) on a resin root.</p>	<p>DEMTENON</p>
<p>REAL SIZE MODEL MD GUIDE</p>		<p>Full arch in resin (actual size). Indispensable for showing MD Guide!</p>	<p>DEMMAX-FCP</p>



You teach, lecture or organize hands-ons ?

Contact us !

We can

- lend you some products,**
- provide you some educational pictures and videos...**

WAM

FRANCE (Head Office)
Tech'Indus B21
645 rue Mayor de Montricher
13854 Aix-en-Provence Cedex 3

CANADA
1910 Salaberry
Montréal (QC)
H3M 1K4

UNITED STATES OF AMERICA
GOLDEN DENTAL SOLUTIONS
18525 Moross Road
Detroit
MI 48224



FRANCE (Head Office)

Tel : +33 4 13 41 57 80
Tel : +33 4 42 26 80 64
Fax : +33 4 88 71 43 11
www.wamkey.com



CANADA

Tel: +1 514 830 62 45 (local)
1-888-369-1448
(toll free / sans frais USA/CANADA)



USA

Tel: +1 877 987 2284
+1 313 371 8773
Fax: +1 866 624 0208
www.physicsforceps.com



plusinfo@wamkey.com



Skype us!

wam-free-call