



Positioning your digital world



Affordable mounting
& mobility for flat panel
displays, laptops, tablets
& computers



**JUST
STAND
.ORG**

Wellness. Productivity. Balance. Feel the difference.

We are committed to making ergonomics affordable for computer users everywhere, helping to make lives healthier and more productive



1984

1988

This commitment began back in 1982 when Ergotron was founded by Harry Sweere, pioneer and visionary author of the Video Electronics Standards Association (VESA) Flat Display Mounting Interface (FDMI) standard. Defining mounting compatibility for plasma and LCD monitors and TVs, these standards are used by the majority of manufacturers worldwide, establishing Ergotron's long history of innovation and ergonomic mounting leadership.

Ergotron offers you true ergonomic designs based on scientific anthropometric studies, accommodating up to 95% of the population. Adapting to your physical needs, you'll find Ergotron products bring ultimate adjustability while enhancing your overall health, comfort and productivity. This is a difference you can trust.

We're still fulfilling the mission.



1995

This passion for human-centered designs led to the introduction of Constant Force (CF) lift-and-pivot motion technology, providing more motion with less effort, and a difference you can feel. Today Ergotron has 85 issued and pending patents, including those for the first LCD articulating arms.

Awards



Ergotron products improve the human interface with digital displays and have been recognized throughout the industry for innovative design and engineering excellence.



Watch Cinema Ergotron, a collection of movies from around the web. Hear what others are saying: movies.ergotron.com

Get inspired! For those stuck long hours sitting at a computer, standing a little more each day burns extra calories, tones muscles, improves posture, increases blood flow and ramps up metabolism.



Contents

Workstations	WorkFit	3-6
	TeachWell	8-9
Desk Mounts	Multi-monitor stands	11
	Multi-monitor arms	12
	Fixed-height stands	13
	Single-monitor mounts	14-15
Ceiling Mounts	Single and dual monitor ceiling mounts	16
	Projector mounts	16
	Accessories	16
Wall Mounts	Large/medium TV, display, digital signage mounts	17-20
	Single-monitor and keyboard mounts	22
	Complete point-of-care workstations	24-28
	StyleView Carts	29-34
Carts	Software	34
	Single-monitor carts	35
	Single and dual monitor carts	36
Markets	Single-monitor and notebook carts	37
	Education	10
	Office	10
	Digital signage	17
	Healthcare, OSHPD	25
	Industrial	38
	The Uprising	7 & 40
Accessories	39	
Service program	39	

WorkFit Sit-Stand Workstations: the platform for wellness and productivity



Meet the complete WorkFit family at workfit.ergotron.com

Ideal for corner workstations, the WorkFit-A clamps to the rear or side of most surfaces. Grommet mount available as optional accessory.



For Computer Users

- Increased caloric-burn, blood flow and metabolic rate
- Improved energy, focus and productivity
- Instantaneous, tool-free positioning
- Personalized computing; unsurpassed ergonomic comfort
- Improvement in health and happiness overall

For HR/Risk Management and Company Cost Savings

- More manageable healthcare premiums
- Reduced absenteeism and presenteeism
- Reallocation of wellness dollars—take control
- Keep employees happy and healthy
- Influence productivity increases



WorkFit-A, Dual

WorkFit-A, LCD LD

WorkFit-A, LCD HD

WorkFit-A, LCD & Laptop

Part # (color)	24-257-026 (polished aluminum)	Light Duty 24-259-026 (polished aluminum)	Heavy Duty 24-260-026 (polished aluminum)	24-258-026 (polished aluminum)
Typical LCD Size	≤ 22"	≤ 22"	≤ 30"	≤ 20" Monitor depth may affect weight capacity. See website for details
LCD SIZE IS APPROXIMATION. DIMENSION IS DIAGONAL MEASUREMENT OF SCREEN. LCD SIZE MAY BE EXCEEDED AS LONG AS SCREEN WEIGHT DOES NOT EXCEED MAXIMUM WEIGHT CAPACITY OF THE MOUNT.				
Weight Capacity	9–20 lbs (4,1–9,1 kg)	5–15 lbs (2,2–6,8 kg)	10–20 lbs (4,5–9,1 kg)	7–20 lbs (3,2–9,1 kg)
Lift	20" (51 cm)	20" (51 cm)	20" (51 cm)	20" (51 cm)
Tilt	30°	30°	30°	LCD only 30°
Pan	180°	180°	180°	180°
Rotation	360° Portrait to landscape screen rotation	360° Portrait to landscape screen rotation	90° Portrait to landscape screen rotation	LCD only 360° Portrait to landscape screen rotation
VESA	MIS-D	MIS-D	MIS-D/E/F	MIS-D
Warranty	5 years	5 years	5 years	5 years

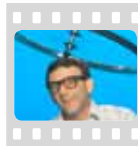


See "The Office Breakup" movies.ergotron.com

WorkFit-D Sit-Stand Desk: on-demand sit-stand workstation

Improve your energy and productivity by standing or sitting as you work, and then switch positions whenever you choose. Standing a little more each day burns extra calories, tones muscles, improves posture, increases blood flow and ramps up metabolism.

- ① Patented Constant Force (CF) technology provides 20" (51 cm) of effortless lift
- ② Pre-drilled to accept optional accessory Underdesk Keyboard Arm (97-582-009)
- ③ Features a spacious 23" x 48" (59 x 122 cm) worksurface. Add Ergotron LCD and laptop display mounts as needed to accommodate individual workflows
- ④ Weight capacity 0–50 lbs (0–22,7 kg). Listed weight capacity represents total load applied to worksurface. When calculating load, include weights of accessory mounts for keyboard, display(s).
- ⑤ Four metal glides provide stable footing



See "Business as UNusual" movies.ergotron.com



WorkFit-D Sit-Stand Desk

Part # (color)	24-219-200 (black)
Weight Capacity	0–50 lbs (0–22,7 kg)
Lift	20" (51 cm)
Warranty	5 years





See “CubeLife 2.0: The Uprising” movies.ergotron.com

A new concept in office ergonomics is the value of standing periodically. Some reasons for standing:

- Increase overall energy for better mental focus
- Relieve body stress caused by sitting
- Expend more calories



Explore WorkFit at cubelife.ergotron.com



WorkFit-C, LCD LD



WorkFit-C, LCD HD



WorkFit-C, Dual



WorkFit-C, LCD & Laptop

Part # (color)	Light Duty 24-215-085 (black)	Heavy Duty 24-216-085 (black)	24-214-085 (black)	24-213-085 (black)
Typical LCD Size	≤ 24"	≤ 30"	≤ 22"	≤ 20"
<small>LCD SIZE IS APPROXIMATION. DIMENSION IS DIAGONAL MEASUREMENT OF SCREEN. LCD SIZE MAY BE EXCEEDED AS LONG AS SCREEN WEIGHT DOES NOT EXCEED MAXIMUM WEIGHT CAPACITY OF THE MOUNT.</small>				
Weight Capacity	LCD Pivot capacity 6–16 lbs (2,7–7,3 kg) Maximum load on height-adjustment assembly, including weight of display in addition to contents on Keyboard Tray, Worksurface, and in Cable Storage Box 24.9 lb (11,3 kg)	LCD Pivot capacity 16–28 lbs (7,3–12,7 kg) Maximum load on height-adjustment assembly, including weight of display in addition to contents on Keyboard Tray, Worksurface, and in Cable Storage Box 31 lbs (14 kg)	Total LCD capacity 12–28 lbs (5,5–12,7 kg) Maximum load on height-adjustment assembly, including weight of display in addition to contents on Keyboard Tray, Worksurface, and in Cable Storage Box 31 lbs (14 kg)	Laptop 6–10 lbs (2,7–4,5 kg) LCD 6–16 lbs (2,7–7,2 kg) Maximum load on height-adjustment assembly, including weight of display in addition to contents on Keyboard Tray, Worksurface, and in Cable Storage Box 31 lbs (14 kg)
Lift	25" (63 cm)	25" (63 cm)	25" (63 cm)	25" (63 cm)
Tilt	30°	30°	—	30° LCD only
Pan	—	—	—	—
Rotation	360° Portrait to landscape screen rotation	90° Portrait to landscape screen rotation	360° Portrait to landscape screen rotation	360° LCD only Portrait to landscape screen rotation
VESA	MIS-D See website for details	MIS-D/E/F See website for details	MIS-D See website for details	MIS-D See website for details
Warranty	5 years	5 years	5 years	5 years



Coming Soon!
WorkFit-S with Worksurface and Large Keyboard Tray included



See "The Uprising: Just Stand!"
 movies.ergotron.com

Uncomfortable? Take a stand!



Worksurface for WorkFit-S
 97-581-019 (black)







Tablet/Document Holder for WorkFit-S
 97-558-200 (black)
 Includes lift handle

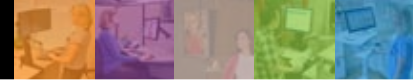


Large Keyboard Tray for WorkFit-S
 97-584 (black)



Hinged Bow for WorkFit-S
 97-583-009 (black)

				
	WorkFit-S, LCD LD	WorkFit-S, LCD HD	WorkFit-S, Dual	WorkFit-S, LCD & Laptop
Part # (color)	Light Duty 33-342-200 (black and polished aluminum)	Heavy Duty 33-344-200 (black and polished aluminum)	33-341-200 (black and polished aluminum)	33-340-200 (black and polished aluminum)
Includes	Height-adjustment column, desk clamp, LCD pivot, keyboard tray with left/right mouse tray	Height-adjustment column, desk clamp, LCD pivot, keyboard tray with left/right mouse tray	Height-adjustment column, desk clamp, crossbar, two (2) LCD pivots, keyboard tray with left/right mouse tray	Height-adjustment column, desk clamp, crossbar, LCD pivot, laptop tray, keyboard tray with left/right mouse tray
Desk Clamp attaches to surface edge .4-2.4" (10-60 mm) thick				
Typical LCD Size	≤ 22"	≤ 30"	≤ 22" Maximum LCD outside width: 21.25" (54 cm)	≤ 20" Monitor depth may affect weight capacity. See website for details
LCD SIZE IS APPROXIMATION. DIMENSION IS DIAGONAL MEASUREMENT OF SCREEN. LCD SIZE MAY BE EXCEEDED AS LONG AS SCREEN WEIGHT DOES NOT EXCEED MAXIMUM WEIGHT CAPACITY OF THE MOUNT.				
Weight Capacity	LCD Pivot capacity 6-16 lbs (2.7-7.3 kg) Maximum load on height-adjustment assembly 24 lbs (11 kg). Includes weight of display in addition to contents on Keyboard Tray	LCD Pivot capacity 16-28 lbs (7.3-12.7 kg) Maximum load on height-adjustment assembly 35 lbs (16 kg). Includes weight of display in addition to contents on Keyboard Tray	LCD weight 6-14 lbs (2.7-6.3 kg) each, 12-28 lbs (5.5-12.7 kg) combined Maximum load on height-adjustment assembly 31 lbs (14 kg). Includes weight of display in addition to contents on Keyboard Tray	Laptop 6-10 lbs (2.7-4.5 kg) LCD 6-16 lbs (2.7-7.2 kg)
Lift	LCD/keyboard adjust 18" (46 cm) in tandem; LCD adjusts 5" (13 cm) independently; maximum LCD height adjustment 23" (58 cm)	LCD/keyboard adjust 18" (46 cm) in tandem; LCD adjusts 5" (13 cm) independently; maximum LCD height adjustment 23" (58 cm)	LCDs/keyboard adjust 18" (46 cm) in tandem; LCDs adjust 5" (13 cm) independently; maximum LCD height adjustment 23" (58 cm)	LCD/notebook/keyboard adjust 18" (46 cm) in tandem; LCD and laptop adjust 5" (13 cm) independently; maximum LCD height adjustment 23" (58 cm)
Tilt	30°	30°	—	LCD only 30°
Pan	—	—	—	—
Rotation	360° Portrait to landscape screen rotation	90° Portrait to landscape screen rotation	360° Portrait to landscape screen rotation	LCD only 360° Portrait to landscape screen rotation
VESA	MIS-D See website for details	MIS-D/E/F See website for details	MIS-D See website for details	MIS-D See website for details
Warranty	5 years	5 years	5 years	5 years



Join the Uprising! Just Stand.

Get inspired!

Are you stuck sitting long hours at a computer? Research shows it's unhealthy. Did you know just standing more each day burns extra calories, tones muscles, increases blood flow and ramps up metabolism?

Find the calculator online at burncalories.juststand.org



“My calories burned per day went up by about 400 ... Who would have thought such a simple thing would make such a huge difference?”

~ Clare H., major PC company

The science behind the need to stand:

- A January 2010 British Journal of Sports Medicine article suggests that people who sit for long periods of time have an increased risk of disease.
- An American Cancer Society study, published in the July 2010 American Journal of Epidemiology, of 120,000 adults suggests that the more people sit, the shorter their average life span. What's more, the findings were independent of physical activity level such as with people who exercise outside of work.
- A 2010 University of Queensland, Australia study found that even when adults meet physical activity guidelines, sitting for prolonged periods can compromise metabolic health.

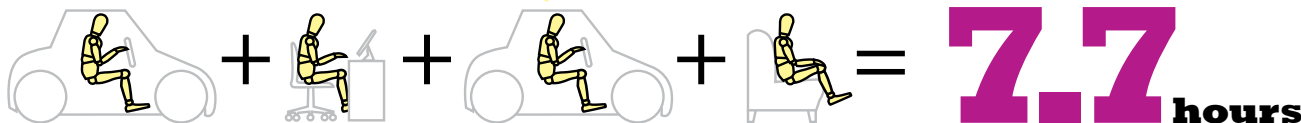
The key to standing more is to assemble a system that matches your body and your work routine.



Sitting Disease by the numbers

Our modern sedentary lifestyles,
both at home and in the workplace,
are costly for us and for our employers.

Average hours of seated commute
+ average hours of seated homelife = too much sitting!



A 2008 Vanderbilt University study of 6,300 people published in the *American Journal of Epidemiology* estimated that the average American spends 55% of waking time (7.7 hours per day) in sedentary behaviors such as sitting.





Coming Soon!
Mobile Charging Carts
 For Laptops

Tablet Management: Sync and charge. Lightweight, compact, easy to maneuver, secure and cost-effective design

- ① Easy one-time setup: clean, neat cable management drawer. Secure drawer is separate from tablet compartment, limiting student access.
 - ② Syncs and charges up to 48 tablets
 - ③ Auxiliary electrical outlet: position Macbook or PC on top of cart and plug in for syncing capability. Included in North American and Japanese carts and in required Power Kit for APAC and EMEA.
 - ④ 12' (3.7 m) power cord with external cord wrap. Included in North American and Japanese carts and in required Power Kit for APAC and EMEA.
 - ⑤ LED power status indicators on each module show on/off and fault status. In addition, Individual Status Indicators (ISI) are available on some models to provide charging status for each individual tablet.
 - ⑥ Provides secure access and storage
 - ⑦ Compact open-architecture design accommodates most tablets. See website for complete listing.
 - ⑧ Easy to maneuver: four 4" (100 mm) premium double-wheeled casters, two (2) locking
- Certified where appropriate to UL 60950-1, UL 1667, FCC requirements and all applicable country-specific regulations. It is also tested to comply with the USB 2.0 standard.
 Helps keep classrooms quieter: operates at less than 42 dBA
 Ships fully assembled

Easy one-time setup



①

②



③

④





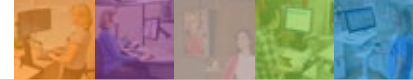
See "Tablet Management: Sync & Take Charge" movies.ergotron.com



Tablet Management Desktop Module

Tablet Management Cart

		
Part # (color)	Non-ISI Single Desktop Module (black) North America 24-235-085 APAC & EMEA 24-241-085 Japan 24-241-085	Non-ISI Two Module Cart (black) North America 24-224-085 APAC & EMEA 24-242-085 Japan 24-252-085 Non-ISI Three Module Cart (black) North America 24-236-085 APAC & EMEA 24-244-085 Japan 24-254-085
	ISI Single Desktop Module (black) North America 24-237-085 APAC & EMEA 24-240-085 Japan 24-240-085	ISI Two Module Cart (black) North America 24-238-085 APAC & EMEA 24-243-085 Japan 24-253-085 ISI Three Module Cart (black) North America 24-239-085 APAC & EMEA 24-245-085 Japan 24-255-085
	Cord Kit for Tablet Desktop Module (REQUIRED with APAC, EMEA and Japan Single Desktop Modules) EU 97-624, UK/Singapore/HK 97-623, AU 97-622, China 97-621, Japan 97-625	Power Kit for Tablet Management Cart (REQUIRED with APAC and EMEA Two and Three Module Carts) EU 97-610, UK/Singapore/HK 97-611, AU 97-612, China 97-613
Typical LCD Size	Accommodates tablets as large as 10.8"H x 7.7"W x 0.95"D (27.4 x 19.6 x 1.3 cm) including cover	
Weight Capacity	Tablets up to 2.2 lbs (1 kg), 25 lbs (11.4 kg) on top surface	
Warranty	5 year warranty; 1 year warranty on all non-power supply electronic systems; 2 year warranty on all power modules	



TeachWell: the mobile digital platform for 21st-century education



This compact technology hub consolidates all your technology tools onto a single mobile platform: laptop or LCD/CPU, keyboard and mouse, portable document camera, projection device and more. Untether from a desk or podium and move wherever needed to deliver a collaborative curriculum.



Explore TeachWell at
teachwell.ergotron.com



Part # (color)	24-199-053 (white & grey)	24-203-053 (white & grey)	24-220-055 (graphite grey)
Includes	Cart, laptop/tablet pivot, document camera tray and bracket, integrated worksurface, wrist rest, keyboard tray with left/right mouse tray, mouse holder, open-front compartment, rear handle, document bin, four dual casters (two locking)	Cart, LCD pivot, CPU Holder, Cable Winding Bracket, Power Strip mounting brackets, document camera tray and bracket, integrated worksurface, wrist rest, keyboard tray with left/right mouse tray, mouse holder, open-front compartment, rear handle, document bin, four dual casters (two locking)	Cart, integrated phenolic worksurface, seamless keyboard/mousing tray, cable management box, cable winding brackets, four dual casters (two locking)
Size	Laptop ≤ 19" <small>LAPTOP TRAY CAN ACCOMMODATE ALMOST ANY SIZE LAPTOP IN TERMS OF SCREEN SIZE OR CHASSIS DIMENSIONS. WEIGHT OF LAPTOP IS DETERMINING FACTOR FOR COMPATIBILITY. LAPTOP TRAY WEIGHT CAPACITY 3-10 lbs (1.4-4.5 kg)</small>	LCD ≤ 22" <small>LCD SIZE IS APPROXIMATION. DIMENSION IS DIAGONAL MEASUREMENT OF SCREEN. LCD SIZE MAY BE EXCEEDED AS LONG AS SCREEN WEIGHT DOES NOT EXCEED MAXIMUM WEIGHT CAPACITY OF THE MOUNT.</small>	Laptop ≤ 19" LCD ≤ 22"
Weight Capacity	Maximum load on height-adjustment assembly 40 lbs (16,8 kg). Includes weight of laptop/keyboard in addition to contents of worksurface, open-front compartment, document bin and camera tray; when Locking Drawer is added total weight capacity decreases to 30 lbs (13,6 kg)	6-30 lbs (2,7-13,6 kg) CPU required. Maximum load on height-adjustment assembly 40 lbs (16,8 kg). Includes weight of LCD/keyboard in addition to contents of worksurface, open-front compartment, document bin and camera tray; when Locking Drawer is added total weight capacity decreases to 30 lbs (13,6 kg)	Maximum load on height-adjustment assembly 38.5 lbs (17,5 kg). When LCD Kit or Laptop Kit is added, this capacity is reduced by 4 lbs (1,6 kg); when Projector Shelf is added, capacity is reduced by 3.5 lbs (1,6 kg).
Lift	Keyboard/notebook/worksurface adjusts 20" (51 cm) in tandem. Notebook screen adjusts 5" (13 cm) independently; maximum screen height adjustment 25" (63 cm)	Keyboard/LCD/worksurface adjusts 20" (51 cm) in tandem. LCD screen adjusts 5" (13 cm) independently; maximum screen height adjustment 25" (63 cm)	20" 51 cm
Tilt	—	30°	—
Pan	180°	—	—
Rotation	—	360° Portrait to landscape screen rotation	—
VESA	—	MIS-D	—
Warranty	5 years	5 years	5 years



TeachWell Locking Drawer for MDP
97-516-053



TeachWell MDW Storage Bin
97-608



Large Utility Shelf for MDP
97-540-053
(recommended for mounting projector)
Power Strip
83-072
(North America only)
Power Strip Mounting Kit
60-590



TeachWell MDW Projector Shelf
97-598-055



TeachWell MDW LCD Kit
97-586



TeachWell MDW Laptop Kit
97-585

Create smart learning environments



The integration of a 21st-century “smart” campus relies on the infusion of useful, relevant technologies to meet the demands of the instructor and their multimedia, multi-linked mobile students. Ergotron’s broad portfolio of display mount and mobility products can be an essential part of the technology platform supporting dynamic learning environments.

Create engaging learning spaces throughout your facility or campus:

- | | | |
|----------------------|------------------------|----------------------------|
| Classrooms | Registration | Creative Studios/Labs |
| Labs | Administration | Data Centers |
| Media Centers | Campus Bookstores | Cafeterias |
| Commons Areas | Lecture Halls | Exhibits and Kiosks |
| Theaters/Auditoriums | Libraries/Data Centers | University Medical Centers |
| Art Centers | Campus Security | |



See how Ergotron products are used every day.
Education Interactive Virtual Tour
education.ergotron.com



See “TeachWell to the Rescue”
movies.ergotron.com



The adjustable office

It’s time to redefine the 21st-century workspace with an emphasis on health, productivity and affordability. Well-designed workspaces minimize absenteeism and promote job satisfaction, offering employees new alternatives to stay energized and fit while they work. Explore which desk, wall or mobile solution will adapt to your company’s physical and workflow demands.



Comfortable computing is a good economic investment. Not only are costs reduced associated with healthcare and missed time, but productivity increases too. Find the calculator online at payback.ergotron.com

How your screen:	
225	days
200	employees
6	hours
\$ 50000	
12	%
\$ 600	



Real-time productivity with multi-monitors

Spending a lot of time comparing data and toggling between applications? Minimizing, maximizing, resizing and moving between windows? Increasing your screen “real estate” allows you to complete tasks faster, and more efficiently, with average productivity increases of 20% or more. To maximize productivity, ergonomics and multi-monitors should be part of the equation.



Setting up a dual display is easier than you think. See our Multi-Display Connection Guide at www.ergotron.com



Neo-Flex® LCD & Laptop Stand










Neo-Flex Dual Display Lift Stand



LX Triple/Widescreen Dual Display Lift Stand



LX Dual Display Lift Stand

Part # (color)	33-331-085 (black)	33-330-085 (black)	33-296-195 (black)	33-299-195 (black)
 Typical LCD Size	≤ 20"	Maximum LCD outside width 21.25" (54 cm)	Triple ≤ 21" Widescreen Dual ≤ 30"	≤ 24" Stand can be used to hold a single widescreen display of up to 30" (76 cm), call for more information
LCD SIZE IS APPROXIMATION. DIMENSION IS DIAGONAL MEASUREMENT OF SCREEN. LCD SIZE MAY BE EXCEEDED AS LONG AS SCREEN WEIGHT DOES NOT EXCEED MAXIMUM WEIGHT CAPACITY OF THE MOUNT.				
 Weight Capacity	LCD 6–16 lbs (2,7–7,2 kg) Laptop 6–12 lbs (2,7–5,4 kg)	Total weight capacity 14–34 lbs (6,4–15,4 kg). Monitors must be equal weight ± 1 lbs (0,45 kg)	Total weight capacity 24–48 lbs (10,9–21,8 kg)	Total weight capacity 12–34 lbs (5,4–15,4 kg)
 Lift	5" (13 cm)	5" (13 cm)	5" (13 cm)	5" (13 cm)
 Tilt	LCD 30°	—	20°	20°
 Pan	Base 360°	Base 360°	—	—
 Rotation	LCD 360° Portrait to landscape screen rotation	360° Portrait to landscape screen rotation	90° Portrait to landscape screen rotation	90° Portrait to landscape screen rotation
 VESA	MIS-D	MIS-D	MIS-D	MIS-D
Warranty	3 years	3 years	5 years	5 years

Verifiable difference with dual displays



Multi-monitor outperforms single monitor

Productivity benefits

- 33% fewer errors
- 18% faster in errorless editing of multiple tasks
- 16% faster edits throughout the task
- 10% more errorless edits generated
- 6% quicker access to tasks (opening, sizing, aligning windows, etc.)

Usability benefits

- 45% easier task tracking (finding windows, referencing text, etc.)
- 38% easier to move sources of information around
- 32% faster to perform tasks
- 29% more effective for tasks
- 24% more comfortable to use in tasks
- 19% easier to recover from mistakes
- 17% easier to learn how to accomplish the task

NEC Display Solutions, University of Utah and ATI Technologies, Productivity and Multi-Screen Displays, October 2003



LX Dual Side-by-Side Arm

LX Dual Stacking Arm

Lift both notebook computer and docking station off the workspace to reclaim valuable surface area; use with or without a docking station



See "Dare2Dual" movies.ergotron.com

Part # (color)	45-245-026 (polished aluminum)	45-248-026 (polished aluminum)
Includes	Desk clamp and grommet mount, pole, two (2) LCD arms, two (2) extensions. Desk clamp attaches to edge up to 2.6" (66 mm) thick; grommet mount attaches through hole 5/16"-2" (7-51 mm) wide and up to 3" (80 mm) thick	Desk clamp and grommet mount, pole, two (2) LCD arms, two (2) extensions, one (1) notebook tray, notebook fastening kit (choose: Velcro, non-slip pad or clips). Desk clamp attaches to edge up to 2.6" (66 mm) thick; grommet mount attaches through hole 5/16"-2" (7-51 mm) wide and up to 3" (80 mm) thick
Typical LCD Size	≤ 24" Monitor depth may affect weight capacity. See website for details	≤ 24" Monitor depth may affect weight capacity. See website for details
LCD SIZE IS APPROXIMATION. DIMENSION IS DIAGONAL MEASUREMENT OF SCREEN. LCD SIZE MAY BE EXCEEDED AS LONG AS SCREEN WEIGHT DOES NOT EXCEED MAXIMUM WEIGHT CAPACITY OF THE MOUNT.		
Weight Capacity	20 lbs (9,1 kg) per arm	LCD weight 7-20 lbs (3,2-9,1 kg) Notebook weight 2,5-12 lbs (1,1-5,4 kg) Total weight capacity 40 lbs (18,1 kg)
Lift	13" (33 cm)	13" (33 cm)
Tilt	75° ↑ 70° / ↓ 5°	75° ↑ 70° / ↓ 5°
Pan	360° Extend LCD up to 25" (64 cm)	360° Extend LCD up to 25" (64 cm)
Rotation	LCD 360° Portrait to landscape screen rotation	LCD 360° Portrait to landscape screen rotation
VESA	MIS-D	MIS-D
Warranty	5 years	5 years

Fixed-height stands save space, improve productivity



See our website for DS100 accessories and customization details



Investigate payback on multi-monitor investments. The example here shows how quickly your investment will be paid back in days, total number of incremental days gained per year and productivity gain of all employees. Visit payback.ergotron.com to calculate your gains.



For reviews of Ergotron products visit blogs.ergotron.com



DS100 Dual-Monitor Desk Stand Horizontal

DS100 Dual-Monitor Desk Stand Vertical

DS100 Triple-Monitor Desk Stand Horizontal

DS100 Quad-Monitor Desk Stand

DS100 Quad-Monitor Desk Stand Horizontal

Part # (color)	33-322-200 (black), available Americas, EMEA	33-091-200 (black)	33-323-200 (black), available Americas, EMEA	33-324-200 (black)	33-325-200 (black), available Americas, EMEA
Base	Grommet mount base also available (60-350-200). Order separately.	Grommet mount base also available (60-350-200). Order separately.	Grommet mount base also available (60-350-200). Order separately.	Grommet mount base also available (60-350-200). Order separately.	Grommet mount base also available (60-350-200). Order separately.
Typical LCD Size	≤ 24" Maximum LCD outside width 23 3/4" (59 cm)	≤ 24"	≤ 21" (53 cm) Maximum LCD outside width 20" (51 cm)	≤ 24" Maximum LCD outside width 23 3/4" (59 cm)	≤ 17" Maximum LCD outside width 16" (40,6 cm)
<small>LCD SIZE IS APPROXIMATION. DIMENSION IS DIAGONAL MEASUREMENT OF SCREEN. LCD SIZE MAY BE EXCEEDED AS LONG AS SCREEN WEIGHT DOES NOT EXCEED MAXIMUM WEIGHT CAPACITY OF THE MOUNT.</small>					
Weight Capacity	31 lbs (14 kg) per LCD	23 lbs (10,4 kg) per LCD	31 lbs (14 kg) per LCD	31 lbs (14 kg) per LCD	31 lbs (14 kg) per LCD
Lift	—	—	—	—	—
Tilt	—	180°	—	—	—
Pan	—	180°	—	—	—
Rotation	360° Portrait to landscape screen rotation	360° Portrait to landscape screen rotation	360° Portrait to landscape screen rotation	360° Portrait to landscape screen rotation	360° Portrait to landscape screen rotation
VESA	MIS-D	MIS-D	MIS-D	MIS-D	MIS-D
Warranty	5 years	5 years	5 years	5 years	5 years



Coming Soon!
Neo-Flex Tablet Arm

Adjust your view – affordable ergonomics promotes wellness

Easily and simultaneously lift LCD screens or laptops to match physical and workflow requirements of most users, providing unsurpassed ergonomic comfort and productivity. Adjustable computer mounts help relieve the strain and fatigue commonly associated with extensive computing.



Neo-Flex All-In-One Lift Stand **Neo-Flex Notebook Lift Stand** **Neo-Flex Widescreen Lift Stand** **Neo-Flex LCD Stand** **Neo-Flex LCD Arm**

Part # (color)	Secure Clamp (SC) 33-338-085 (black) Strap 33-326-085 (black)	33-334-085 (black)	33-329-085 (black)	33-310-060 (black & silver)	45-174-300 (silver)
Includes	—	—	—	—	Clamp and grommet bases. Clamp to surface edge up to 1.8" (46 mm) thick or grommet mount through hole up to 2" (51 mm) wide and up to 1.75" (44 mm) deep
Typical LCD Size	≤ 24" Some motion may be restricted on 22–24" monitors when in portrait mode	≤ 17" Works with most 17" (43 cm) notebooks with or without port replicator	20–32"	≤ 24"	≤ 22"
<small>LCD SIZE IS APPROXIMATION. DIMENSION IS DIAGONAL MEASUREMENT OF SCREEN. LCD SIZE MAY BE EXCEEDED AS LONG AS SCREEN WEIGHT DOES NOT EXCEED MAXIMUM WEIGHT CAPACITY OF THE MOUNT.</small>					
Weight Capacity	6–16 lbs (2,7–7,2 kg)	3.5–14 lbs (1,6–6,3 kg)	16–36 lbs (7,2–16,3 kg)	6–16 lbs (2,7–7,2 kg)	≤ 18 lbs (8,2 kg) Monitor depth may affect weight capacity. See website for details
Lift	5" (13 cm)	6" (15,2 cm)	5" (13 cm)	5" (13 cm)	8" (20,3 cm)
Tilt	30°	25°	30°	30°	180°
Pan	Base 360°	Base 360°	Base 360°	270°	360° Extend LCD up to 19.3" (49 cm)
Rotation	360° Portrait to landscape screen rotation	—	90° Display size may restrict motion	360° Portrait to landscape screen rotation. Display size may restrict motion	360° Portrait to landscape screen rotation
VESA	MIS-D	—	MIS-D/E/F See website for details	MIS-D	MIS-D
Warranty	3 years	3 years	3 years	3 years	3 years



 LX LCD Arm
PASSES
10,000-cycle
motion test



Universal Tablet Cradle
80-106-085 (black)
Includes tablet cradle,
sliding bracket, attachment
hardware



Mount 
Quick Finder

Find a mount for your display model or display type with the Quick Finder tool on our website www.ergotron.com



See "It's Alive!"
movies.ergotron.com



**Neo-Flex Extend
LCD Arm**



**MX Desk Mount
LCD Arm**



**LX Desk Mount
LCD Arm**



**LX Desk Mount
LCD Arm, Tall Pole**

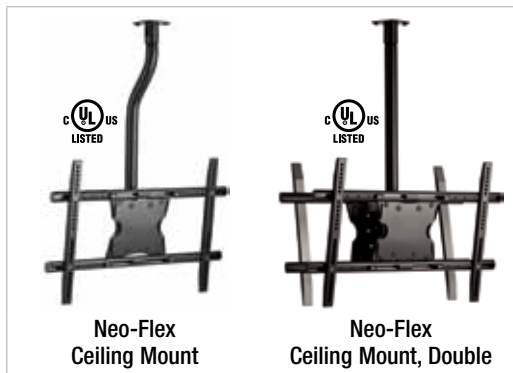


**Neo-Flex Underdesk
Keyboard Arm**

Part # (color)	45-235-194 (silver)	45-214-026 (polished aluminum)	45-241-026 (polished aluminum)	45-295-026 (polished aluminum)	97-582-009 (black)
Includes	Clamp and grommet bases. Clamp to surfaces .5–1.9" (13–48 mm) thick or grommet mount through holes .31–2" (8–51 mm) wide, up to 2.5" (63 mm) thick	Clamp and grommet bases. Desk clamp attaches to surface edge 0–2.6" (0–66 mm) thick; grommet mount attaches through surface holes .31–2" (8–51 mm) wide and up to 3" (80 mm) thick	Clamp and grommet bases. Desk clamp attaches to surface edge .4–2.4" (10–60 mm) thick; grommet mount attaches through surface hole .31–2" (8–50 mm) wide and up to 3" (76 mm) thick	Clamp and grommet bases. Desk clamp attaches to surface edge .4–2.4" (10–60 mm) thick; grommet mount attaches through surface hole .31–2" (8–50 mm) wide and up to 3" (76 mm) thick	Keyboard arm, tray, desk clamp, and screws for mounting to the desk surface
Typical LCD Size	≤ 24"	≤ 30"	≤ 24"	≤ 24"	—
LCD SIZE IS APPROXIMATION. DIMENSION IS DIAGONAL MEASUREMENT OF SCREEN. LCD SIZE MAY BE EXCEEDED AS LONG AS SCREEN WEIGHT DOES NOT EXCEED MAXIMUM WEIGHT CAPACITY OF THE MOUNT.					
Weight Capacity	7–20 lbs (3,1–9,1 kg) Monitor depth may affect weight capacity. See website for details	14–30 lbs (6,3–13,6 kg) Monitor depth may affect weight capacity. See website for details	7–20 lbs (3,1–9,1 kg) Monitor depth may affect weight capacity. See website for details	7–20 lbs (3,1–9,1 kg) Monitor depth may affect weight capacity. See website for details	≤ 3 lbs (1,7 kg)
Lift	—	5" (13 cm)	13" (33 cm)	13" (33 cm)	6" (15,2 cm)
Tilt	80° ↑ 75° / ↓ 5°	80° ↑ 75° / ↓ 5°	75° ↑ 70° / ↓ 5°	75° ↑ 70° / ↓ 5°	15°
Pan	360°	360°	360°	360°	—
Rotation	90° Portrait to landscape screen rotation	90° Display size may restrict motion	90° Portrait to landscape screen rotation	90° Portrait to landscape screen rotation	—
VESA	MIS-D	MIS-D/E/F See website for details	MIS-D	MIS-D	—
Extension	≤ 22" (56 cm)	≤ 16.7" (42,4 cm)	≤ 25" (64 cm)	≤ 25" (64 cm)	≤ 10.7" (27,3 cm)
Warranty	3 years	5 years	5 years	5 years	3 years



Professional grade ceiling mounts provide single and back-to-back flat panel mounting options. With versatility and flexibility built right in, these mounts are ideal for any ceiling application – whether TV viewing or digital signage.



Neo-Flex Ceiling Mount

Neo-Flex Ceiling Mount, Double

Part # (color)	60-621 (black)	60-622 (black)
Typical LCD Size	37–70"	two 37–70"
<small>LCD SIZE IS APPROXIMATION. DIMENSION IS DIAGONAL MEASUREMENT OF SCREEN. LCD SIZE MAY BE EXCEEDED AS LONG AS SCREEN WEIGHT DOES NOT EXCEED MAXIMUM WEIGHT CAPACITY OF THE MOUNT.</small>		
Weight Capacity	≤ 200 lbs (90,7 kg)	≤ 400 lbs (181,4 kg)
Lift	—	—
Tilt	30°	30°
Pan	—	—
Rotation	—	—
VESA	100 x 100 to 800 x 400	100 x 100 to 800 x 400
Warranty	3 years	3 years



Neo-Flex Projector Ceiling Mount



Coming Soon! Neo-Flex Short Throw Projector Arm

Part # (color)	60-623 (black)
Weight Capacity	Small to large projectors ≤ 40 lbs (18,1 kg)
Tilt	30°
Pan	30°
Rotation	360°
Warranty	3 years



NF Ceiling Mount Shelf
97-591 (black)



NF Extension Pole (black)
97-592 24"L (61 cm)
97-593 18"L (45,7 cm)
97-594 12"L (30,5 cm)



NF Unistrut Pole Adaptor
97-595 (black)



NF Female Pole Adaptor
97-596 (black)



NF Ceiling Plate 97-597
(white)

Bring the message to your audience

Whether communicating powerful, attention-grabbing graphics or streaming video, the appeal of digital signage is in its quick and effortless ability to manipulate content in real-time to influence audience behavior. However, one of the keys to implementing a powerful message is effective positioning. This is where Ergotron can help. Our innovative line of display mounts and mobile workstations move content to the audience, creating a powerful impact.



See "Bracketology Simplified" movies.ergotron.com



Boost profits and increase traffic with Ergotron digital signage mounting and mobility solutions.
digitalsignage.ergotron.com



Wall mounted solutions for large TVs, displays and digital signage applications



Part # (color)	60-613 (black)	60-615 (black)	60-612 (black)	60-614 (black)	97-589 (black)
Typical LCD Size	23-42"	23-42"	37-63"	37-63"	13-32"
LCD SIZE IS APPROXIMATION. DIMENSION IS DIAGONAL MEASUREMENT OF SCREEN. LCD SIZE MAY BE EXCEEDED AS LONG AS SCREEN WEIGHT DOES NOT EXCEED MAXIMUM WEIGHT CAPACITY OF THE MOUNT.					
Weight Capacity	≤ 80 lbs (36,3 kg)	≤ 80 lbs (36,3 kg)	≤ 175 lbs (79 kg)	≤ 175 lbs (79 kg)	≤ 40 lbs (18,1 kg)
Lift	—	—	—	—	—
Tilt	20°	—	15°	—	—
Pan	—	—	—	—	—
Rotation	—	—	—	—	—
VESA	100 x 100 to 400 x 300	100 x 100 to 400 x 300	100 x 100 to 600 x 400	100 x 100 to 600 x 400	75 x 75 to 200 x 200
Depth	1.9" (4,9 cm)	1.6" (4,1 cm)	2.7" (6,9 cm)	1.7" (4,4 cm)	0.5" (1,3 cm)
Warranty	3 years	3 years	3 years	3 years	3 years





Wall Mounts

Introducing the fully height-adjustable TV/Display Wall Mount ... the Interactive Arm

Lift, swing or turn your TV/display in any direction! Position the screen to relieve eye, neck and back strain. Equipped with patented Constant Force Technology the arm provides fluid, light-touch adjustments for effortless TV/display movement.



Remarkably sleek and slim designs that don't compromise functionality

	 Interactive Arm LD	 Interactive Arm HD	 TM Cantilever VHD	 TM Cantilever UHD
Part # (color)	45-299-026 (polished aluminum)	45-296-026 (polished aluminum)	60-617 (black)	60-616 (black)
Typical LCD Size	19–26"	30–60"	23–42"	37–55"
<small>LCD SIZE IS APPROXIMATION. DIMENSION IS DIAGONAL MEASUREMENT OF SCREEN. LCD SIZE MAY BE EXCEEDED AS LONG AS SCREEN WEIGHT DOES NOT EXCEED MAXIMUM WEIGHT CAPACITY OF THE MOUNT.</small>				
Weight Capacity	6–20 lbs (3,2–9,1 kg)	18–40 lbs (8,2–18,2 kg)	≤ 100 lbs (45,4 kg)	≤ 150 lbs (68,1 kg)
Lift	13" (33 cm)	20" (51 cm)	—	—
Tilt	75° ↑ 70° / ↓ 5°	25° ↑ 10° / ↓ 15°	20°	20°
Pan	180°	180°	180°+	180°+
Rotation	360°	10° ↑ 5° / ↓ 5°	—	—
VESA	75 x 75 to 200 x 200	200 x 100 to 600 x 400	100 x 100 to 400 x 400	200 x 100 to 900 x 500
Depth	3.9" (9,9 cm)	5.5" (14 cm)	2.36" (6 cm)	3.4" (8,6 cm)
Extension	16.6" (42 cm)	24" (61 cm)	21.5" (54,8 cm)	26.6" (67,4 cm)
Warranty	5 years	5 years	5 years	5 years

TILT MOUNTS are most suitable when you need to mount your flat panel TV higher on the wall. The tilt functionality allows you to tilt your TV down to avoid screen glare or achieve a better viewing angle.

FIXED MOUNTS are the simplest way to mount your flat panel TV on the wall when you have a dedicated viewing area and your eyes are level with the middle or bottom of your TV when seated.



Simple TM and WM installation

- ① Attach wall plate to chosen location on wall
- ② Attach mounting brackets to display
- ③ Hang display on wall plate



Neo-Flex Cantilever VHD Neo-Flex Cantilever UHD TM Tilting Wall Mount WM Low Profile Wall Mount SIM90 Signage Integration Mount

Part # (color)	60-618 (black)	60-619 (black)	60-603-003 (silver) XL 60-601-003 (silver)	60-604-003 (silver) XL 60-602-003 (silver)	60-600-009 (black)
Typical LCD Size	23–42"	37–52"	32–65" XL 42–65"	32–65" XL 42–65"	≥ 32"
LCD SIZE IS APPROXIMATION. DIMENSION IS DIAGONAL MEASUREMENT OF SCREEN. LCD SIZE MAY BE EXCEEDED AS LONG AS SCREEN WEIGHT DOES NOT EXCEED MAXIMUM WEIGHT CAPACITY OF THE MOUNT.					
Weight Capacity	≤ 80 lbs (36,3 kg)	≤ 125 lbs (56,7 kg)	≤ 175 lbs (79 kg)	≤ 175 lbs (79 kg)	≤ 115 lbs (52,2 kg)
Lift	—	—	—	—	—
Tilt	20°	20°	20°	—	15°
Pan	180°+	180°+	—	—	—
Rotation	—	—	—	—	90° Portrait to landscape screen rotation. See website for details
VESA	100 x 100 to 400 x 400	100 x 100 to 600 x 400	MIS-D/E/F See website for details	MIS-D/E/F See website for details	MIS-F See website for details
Depth	3.3" (8,4 cm)	5.5" (14 cm)	3.5" (8,9 cm)	1.25" (3,2 cm)	4.8" (12,1 cm)
Extension	15.6" (39,7 cm)	22" (55,9 cm)	—	—	—
Warranty	3 years	3 years	5 years	5 years	5 years



	LX HD Wall Mount Swing Arm	LX HD Wall Mount Pivot
Part # (color)	45-268-026 (polished aluminum)	45-269-009 (black)
Typical LCD Size	≤ 42"	≤ 42"
LCD SIZE IS APPROXIMATION. DIMENSION IS DIAGONAL MEASUREMENT OF SCREEN. LCD SIZE MAY BE EXCEEDED AS LONG AS SCREEN WEIGHT DOES NOT EXCEED MAXIMUM WEIGHT CAPACITY OF THE MOUNT.		
Weight Capacity	≤ 50 lbs (22.7 kg) Adding second extension (45-289-026) reduces maximum weight capacity to 36 lbs (16,3 kg)	≤ 50 lbs (22.7 kg)
Lift	—	—
Tilt	20°	20°
Pan	360°	40°
Rotation	360° Portrait to landscape screen rotation	360° Portrait to landscape screen rotation
VESA	75 x 75, 100 x 100, 100 x 200, 200 x 200 mm	75 x 75, 100 x 100, 100 x 200, 200 x 200 mm
Depth	Folds to 3.7" (9,1 cm)	3.7" (9,1 cm)
Extension	13" (33 cm)	—
Warranty	5 years	5 years



	200 Series Dual Monitor Arm	200 Series Wall Mount Pivot	200 Series Wall Mount Arm, 1 Extension	200 Series Wall Mount Arm, 2 Extensions
Part # (color)	45-231-200 (black), available Americas	45-232-200 (black), available Americas	45-233-200 (black), available Americas	45-234-200 (black), available Americas, EMEA
Typical LCD Size	≤ 22"	≤ 24"	≤ 24"	≤ 24"
LCD SIZE IS APPROXIMATION. DIMENSION IS DIAGONAL MEASUREMENT OF SCREEN. LCD SIZE MAY BE EXCEEDED AS LONG AS SCREEN WEIGHT DOES NOT EXCEED MAXIMUM WEIGHT CAPACITY OF THE MOUNT.				
Weight Capacity	Weight capacity 13 lbs (5,9 kg) per mount, 26 lbs (11,8 kg) total. Monitors must be equal in weight or +/-1 pound (0,45 kg)	≤ 25 lbs (11,3 kg)	≤ 25 lbs (11,3 kg)	≤ 25 lbs (11,3 kg)
Lift	—	—	—	—
Tilt	—	180° Display size may restrict motion	180° Display size may restrict motion	180° Display size may restrict motion
Pan	360°	180° Display size may restrict motion	360°	360°
Rotation	360° Portrait to landscape screen rotation	360° Portrait to landscape screen rotation	360° Portrait to landscape screen rotation	360° Portrait to landscape screen rotation
VESA	MIS-D	MIS-D	MIS-D	MIS-D
Depth	Folds to 5.8" (14,8 cm)	5.8" (14,8 cm)	Folds to 5.8" (14,8 cm)	Folds to 5.8" (14,8 cm)
Extension	23.7" (60,1 cm)	—	14.8" (37,6 cm)	23.8" (60,5 cm)
Warranty	5 years	5 years	5 years	5 years



Most Ergotron wall mounts are earthquake zone approved, meeting OSHPD pre-approval requirements for California hospitals. Before purchasing wall mounted products for installation in California hospitals contact your Ergotron representative.



MX Wall Mount LCD Arm



100 Series Pivot



FX 30



Neo-Flex Dual Monitor Wall Mount

Part # (color)	45-228-026 (polished aluminum)	Single 47-092-800 (grey/black) Double 47-093-800 (grey/black)	60-239-007 (black)	28-514-800 (grey & black) 28-513-100 (grey)
Includes	—	Grey and black pivot covers Attaches directly to surface, although Wall Plate (97-101-003) is recommended. See Accessories	—	28-514-800: Dual LCD pivots, 26" (66 cm) Wall Track 28-513-100: Slide-out keyboard tray, 10" (25.4 cm) Wall Track, wrist rest, mouse pad, mouse holder
Typical LCD Size	≤ 30"	≤ 24"	≤ 27"	≤ 24"
<small>LCD SIZE IS APPROXIMATION. DIMENSION IS DIAGONAL MEASUREMENT OF SCREEN. LCD SIZE MAY BE EXCEEDED AS LONG AS SCREEN WEIGHT DOES NOT EXCEED MAXIMUM WEIGHT CAPACITY OF THE MOUNT.</small>				
Weight Capacity	14–30 lbs (6,3–13,6 kg)	Single ≤ 25 lbs (11,3 kg) Double ≤ 23 lbs (10,4 kg)	≤ 30 lbs (13,6 kg)	≤ 50 lbs (22,7 kg) 25 lbs (11,3 kg) per pivot
Lift	5" (13 cm)	—	—	—
Tilt	80° ↑ 75° / ↓ 5°	180°	—	180°
Pan	360°	—	—	—
Rotation	90° Portrait to landscape screen rotation	360° Portrait to landscape screen rotation	—	360° Portrait to landscape screen rotation
VESA	MIS-D/E/F See website for details	MIS-D	MIS-D	MIS-D
Depth	Folds to 5" (13 cm)	Single 3.4" (8,6 cm) Double 5.4" (13,7 cm)	.77" (2 cm)	4.5" (11,4 cm)
Extension	21.6" (55 cm)	—	—	11.3" (46,4 cm)
Warranty	5 years	5 years	5 years	5 years

Space-saving technology for optimal viewing

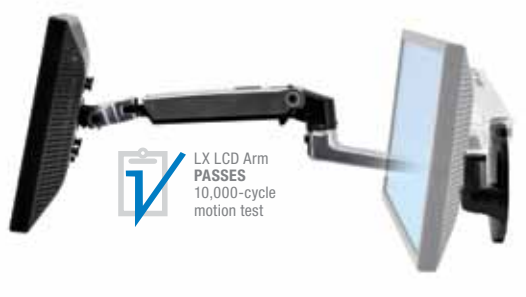
Attach your valuable flat panel investments to just about any wall with ease. Ergotron's engineering know-how has created a broad offering of fixed and adjustable solutions to fit the spectrum of display sizes.



See "It's Alive!"
movies.ergotron.com



The LX Wall Mount LCD Arm extends up to 25" (64 cm), providing unparalleled range of motion when in use, and retracts easily to free up valuable space when not in use.



For reviews of Ergotron products visit blogs.ergotron.com



LX Wall Mount LCD Arm Neo-Flex Wall Mount Lift LX Keyboard Arm



Part # (color)	45-243-026 (polished aluminum)	60-577-195 (black)	45-246-026 (polished aluminum)
Includes	—	—	Wrist rest, mouse holder
Typical LCD Size	≤ 24"	≤ 24"	Keyboard ≤ 17.5" x 10.1" (44.5 x 25.7 cm)
<small>LCD SIZE IS APPROXIMATION. DIMENSION IS DIAGONAL MEASUREMENT OF SCREEN. LCD SIZE MAY BE EXCEEDED AS LONG AS SCREEN WEIGHT DOES NOT EXCEED MAXIMUM WEIGHT CAPACITY OF THE MOUNT.</small>			
Weight Capacity	7–20 lbs (3,1–9,1 kg)	6–16 lbs (2,7–7,2 kg)	≤ 5 lbs (2,2 kg)
Lift	13" (33 cm)	5" (13 cm)	13" (33 cm)
Tilt	75° ↑ 70° / ↓ 5°	35°	80°
Pan	360°	70°	360°
Rotation	90° Portrait to landscape screen rotation	90° Portrait to landscape screen rotation	—
VESA	MIS-D	MIS-D	—
Depth	Folds to 5.3" (13,4 cm)	3.5" (9 cm)	Folds to 3.5" (9 cm)
Extension	25" (64 cm)	—	35" (89 cm)
Warranty	5 years	3 years	5 years

Healthy mounting solutions for the entire enterprise

1 Reception



2 Waiting Area



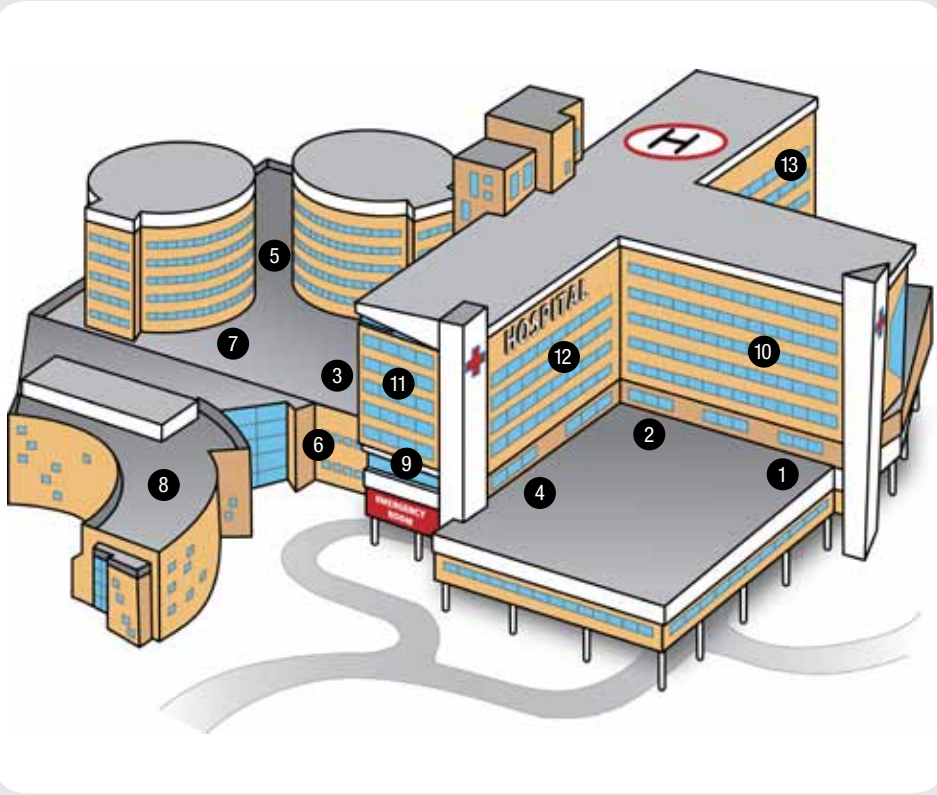
3 Exam Room



4 Nurse Station



5 High-Traffic Area



6 Back Office



7 Operating Room



8 Cafeteria



13 In-Patient Floor



12 Radiology



11 Intensive Care



10 Conference Room



9 Emergency



Care for the caregiver and back-office staff

See the payback when you stand up for your staff

For those stuck long hours sitting at a computer, standing a little more each day burns extra calories, tones muscles, improves posture, increases blood flow and ramps up metabolism.



Point-of-care and everywhere

Healthy computing starts with understanding the diverse needs required to bring EMR, eMAR, PACS and CPOE to the point of care. With almost 30 years experience in creating ergonomic solutions for computer users worldwide, and 20 years in healthcare alone, Ergotron is uniquely qualified to help you configure options and design workstations that fit workflow throughout the entire facility.

Collaborate with dedicated healthcare leadership and caregiving professionals worldwide

Choose from a broad solutions-based portfolio offering ease of motion, true ergonomic designs, and space-saving technologies

Configure options to design workstations that fit your workflow throughout the entire facility



200 Series Combo Arm

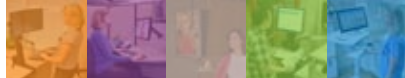
LX Wall Mount System

Part # (color)	45-230-216 (white) 45-230-200 (black)	Universal CPU Holder (silver): 45-247-026 (polished aluminum) Vertical Small CPU Holder (black): 45-253-026 (polished aluminum)
Includes	200 Combo Arm, wall mount bracket, height-adjustable LCD mount, wrist rest, scanner and mouse holder, integrated keyboard tray with left/right mouse tray, handle, manual, VESA mounting kit, cable ties	LX Wall Mount LCD Arm, LX Keyboard Arm, CPU Holder and 10" (25,4 cm) Wall Track, wrist rest, mouse holder, 34" (86,4 cm) Wall Track, two (2) 10" (25,4 cm) cable channels, anchor hardware kit
Typical LCD Size	≤ 24"	≤ 24"
<small>LCD SIZE IS APPROXIMATION. DIMENSION IS DIAGONAL MEASUREMENT OF SCREEN. LCD SIZE MAY BE EXCEEDED AS LONG AS SCREEN WEIGHT DOES NOT EXCEED MAXIMUM WEIGHT CAPACITY OF THE MOUNT.</small>		
Weight Capacity	LCD 6–18 lbs (2,7–8,2 kg); keyboard, mouse and barcode scanner 5 lbs (2,3 kg)	LCD 7–20 lbs (3,1–9,1 kg) Monitor depth may affect weight capacity. See website for details Keyboard ≤ 5 lbs (2,3 kg) CPU ≤ 40 lbs (18 kg)
Lift	5" (13 cm)	LCD 13" (33 cm) Keyboard 13" (33 cm)
Tilt	LCD 30° ↑ 25° / ↓ 5° Negative-tilt keyboard tray adjustable 10°	LCD 75° ↑ 70° / ↓ 5° Keyboard 80°
Pan	360°	360°
Rotation	360° Portrait to landscape screen rotation	90° Portrait to landscape screen rotation
VESA	MIS-D	MIS-D
Depth	Folds to 12.1" (31 cm)	Folds to 5.3" (13,4 cm)
Extension	≤ 39" (99 cm)	LCD ≤ 25" (64 cm) Keyboard ≤ 35" (89 cm)
Warranty	5 years	5 years



See how Ergotron products are used every day.
Healthcare Interactive Virtual Tour
healthcare.ergotron.com





Triangle of Care

Create the connection between you, your patient and their information



See "Ergotron StyleView: A Healthy Groove" movies.ergotron.com

Ergotron products allow computer systems to be easily and ergonomically positioned for any user. The effect? Minimizing space requirements and maximizing efficiency.

- **Ease of motion** – quick adjustment; easily maneuver to the point-of-care
- **True ergonomic designs** – create a comfortable work environment for you
- **Space-saving technologies** – place equipment where needed

OSHPD
Office of Statewide Health Planning and Development

Ergotron's wall mount products received OSHPD OPA Pre-approval numbers for mounting in hospitals and healthcare facilities throughout California on October 13, 2009. These standards help ensure patient safety during an earthquake and help make it possible for facilities to continue to function and care for the injured after an earthquake.

OPA #	Applicable wall mount solution/configuration
2338-07	Wall Track and all possible associated arms – direct to stud (16" on center)
2339-07	Wall Track and all associated arms (including StyleView Vertical Lift) – external mount
2341-07	StyleView Vertical Lift – internal mount
2340-07	StyleView Enclosure – direct to stud (16" on center)

To learn more about Ergotron's commitment to OSHPD compliance visit www.ergotron.com



StyleView Sit-Stand Enclosure

StyleView VL Enclosure

Part # (color)	60-610-062 (white) 60-610-060 (black)	60-595-062 (white)
Includes	Enclosure, velcro kit (attaches keyboard to keyboard tray), cable management wrap, antimicrobial wrist rest. Wall footprint 38.2"H x 26.6"W (97 x 67,5 cm)	Enclosure, wall plate, mounting template, vertical lift, slide-out keyboard tray, wrist rest, mouse pouch, scanner holder, internal cable management, batteries, monitor mounting hardware, wall mounting hardware, keys
Typical LCD Size	≤ 22" Maximum monitor physical dimensions 20.5"W x 13.5"H x 2.5"D (52,1 x 34,3 x 6,4 cm). Monitor depth greater than 2.5" (6,4 cm) is allowable, however screen will protrude beyond profile of unit in such cases	≤ 22" Maximum monitor physical dimensions 20.7" W x 14.7" H x 2.8" D (52,6 x 37,3 x 7 cm). Assumes VESA hole pattern is centered on the back of the display
<small>LCD SIZE IS APPROXIMATION. DIMENSION IS DIAGONAL MEASUREMENT OF SCREEN. LCD SIZE MAY BE EXCEEDED AS LONG AS SCREEN WEIGHT DOES NOT EXCEED MAXIMUM WEIGHT CAPACITY OF THE MOUNT.</small>		
Weight Capacity	≤ 39 lbs (17,7 kg) Listed weight capacity represents total load. CPU 3–10 lbs (1,4–4,5 kg); monitor 7–12,5 lbs (3,2–5,7 kg); keyboard and worksurface 0,5–1,5 lbs (0,2–0,7 kg)	8–33 lbs (3,6–14,9 kg) Listed weight capacity represents total load, including monitor and contents of keyboard tray, mouse pouch and scanner holder. Maximum load capacity: monitor pivot 18 lbs (8,2 kg); CPU compartment 20 lbs (9,1 kg); door/worksurface 50 lbs (22,6 kg)
Lift	20" (51 cm)	9" (23 cm)
Tilt	—	—
Pan	—	LCD 10° Display size may restrict motion. Keyboard 120°
Rotation	—	—
VESA	MIS-D	MIS-D
Depth	3.8" (9,7 cm) closed 19.3" (48,9 cm) open	6.75" (17 cm) closed 20.6" (53 cm) open
Warranty	5 years 1-year warranty on all electronic components (excludes AA batteries)	5 years 1-year warranty on all electronic components (excludes AA batteries)

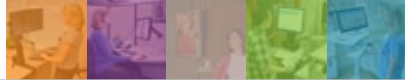
Worksurface with pull-out keyboard tray facilitates caregiver workflow



- ① Patented CF lift-and-pivot motion technology provides premium 25" (63,5 cm) LCD height adjustment, portrait-to-landscape rotation and 30° tilt
- ② Durable, easy-to-clean exterior composed of aluminum, high-grade plastic
- ③ Integrated mouse and barcode scanner holder provide easy access
- ④ Fold-down worksurface/keyboard tray to support workflow needs. Worksurface is 22.75"W x 10.6" D (57,8 x 26,9 cm). Keyboard tray is 18.6"W x 9"D (47,2 x 22,8 cm)
- ⑤ Ergonomic back-tilt keyboard tray ensures wrists remain in a neutral position during data entry
- ⑥ Clean, concealed and neat routing of cables through the expansive cable management system
- ⑦ Extend LCD and keyboard up to 43" (109 cm) from wall; fold equipment back out of the way when not in use. With worksurface in storage position, system depth is as little as 8" (20,3 cm). With keyboard in storage position, system depth is as little as 12" (30,5 cm)
- ⑧ Optional Extender Arm (45-261-026) increases range of motion for even greater reach. Includes an optional 180° rotation stop for controlling the range of motion in space constrained areas



Part # (color)	(polished aluminum) Combo Arm: 45-260-026	(Available with black head-assembly only, polished aluminum) Combo Arm: 45-266-026	(polished aluminum) Combo Arm, medium CPU holder and wall track: 45-270-026 Combo Arm, small CPU holder and wall track: 45-272-026	(polished aluminum) Combo Arm, medium CPU holder and wall track: 45-271-026 Combo Arm, small CPU holder and wall track: 45-273-026
	Extender Arm (optional) 45-261-026 (polished aluminum)	Extender Arm (optional) 45-261-026 (polished aluminum)	Extender Arm (optional) 45-261-026 (polished aluminum)	Extender Arm (optional) 45-261-026 (polished aluminum)
Includes	Combo Arm with worksurface, wall mount bracket, track mount bracket kit, height-adjustable LCD mount, wrist rest, scanner and mouse holder, worksurface with integrated keyboard tray, VESA monitor mounting kit, cable ties	Combo Arm, wall mount bracket, track mount bracket kit, height-adjustable LCD mount, wrist rest, scanner and mouse holder, integrated keyboard tray with left/right mouse tray, handle, VESA monitor mounting kit, cable ties	HD Combo Arm with worksurface, 34" Wall Track with (2) black track covers, CPU Holder, CPU spacer, (2) 10" cable channels, CPU and Arm track mount bracket kits, Wall Track fasteners for concrete and wood, CPU direct wall mount kit, height-adjustable LCD mount, wrist rest, scanner and mouse holders, integrated keyboard tray, handle, VESA monitor mounting kit, cable ties	HD Combo Arm, 34" Wall Track with (2) black track covers, CPU Holder, CPU spacer, (2) 10" cable channels, CPU and Arm track mount bracket kits, Wall Track fasteners for concrete and wood, CPU direct wall mount kit, height-adjustable LCD mount, wrist rest, scanner and mouse holders, integrated keyboard tray with left/right mouse tray, handle, VESA monitor mounting kit, cable ties
Typical LCD Size	≤ 24"	≤ 24"	≤ 24"	≤ 24"
LCD SIZE IS APPROXIMATION. DIMENSION IS DIAGONAL MEASUREMENT OF SCREEN. LCD SIZE MAY BE EXCEEDED AS LONG AS SCREEN WEIGHT DOES NOT EXCEED MAXIMUM WEIGHT CAPACITY OF THE MOUNT.				
Weight Capacity	Display 6–18 lbs (2,7–8,2 kg); keyboard, mouse and barcode scanner 4 lbs (1,8 kg) and up to 10 lbs (4,5 kg) on worksurface	Display 6–18 lbs (2,7–8,2 kg) or up to 25 lbs (11,4 kg) with tilt and lift lock-out features engaged; keyboard, mouse and barcode scanner 4 lbs (1,8 kg)	Display 6–18 lbs (2,7–8,2 kg); keyboard, mouse and barcode scanner 4 lbs (1,8 kg) and up to 10 lbs (4,5 kg) on worksurface; 45-270-026: CPU 50 lbs (22,7 kg) 45-272-026: CPU 40 lbs (18 kg)	Display 6–18 lbs (2,7–8,2 kg) or up to 25 lbs (11,4 kg) with tilt and lift lock-out features engaged; keyboard, mouse and barcode scanner 4 lbs (1,8 kg); 45-271-026: CPU 50 lbs (22,7 kg) 45-273-026: CPU 40 lbs (18 kg)
Lift	LCD and keyboard adjust 20" (51 cm) in tandem with single-motion; LCD adjusts 5" (13 cm) independently; maximum LCD height adjustment 25" (64 cm)	LCD and keyboard adjust 20" (51 cm) in tandem with single-motion; LCD adjusts 5" (13 cm) independently; maximum LCD height adjustment 25" (64 cm)	LCD and keyboard adjust 20" (51 cm) in tandem with single-motion; LCD adjusts 5" (13 cm) independently; maximum LCD height adjustment 25" (64 cm)	LCD and keyboard adjust 20" (51 cm) in tandem with single-motion; LCD adjusts 5" (13 cm) independently; maximum LCD height adjustment 25" (64 cm)
Tilt	LCD 30° ↑ 25° / ↓ 5°	LCD 30° ↑ 25° / ↓ 5°	LCD 30° ↑ 25° / ↓ 5°	LCD 30° ↑ 25° / ↓ 5°
Pan	360°	360°	360°	360°
Rotation	90° Portrait to landscape screen rotation	360° Portrait to landscape screen rotation	90° Portrait to landscape screen rotation	360° Portrait to landscape screen rotation
VESA	MIS-D	MIS-D	MIS-D	MIS-D
Depth	Folds to 8" (20,3 cm)	Folds to 12" (30,5 cm)	Folds to 8" (20,3 cm)	Folds to 12" (30,5 cm)
Extension	≤ 43" (109 cm) with Extender ≤ 60" (152 cm)	≤ 39.75" (101 cm) with Extender ≤ 56.75" (144 cm)	≤ 43" (109 cm) with Extender ≤ 60" (152 cm)	≤ 39.75" (101 cm) with Extender ≤ 56.75" (144 cm)
Warranty	5 years	5 years	5 years	5 years



StyleView Sit-Stand Combo System with Worksurface and Extender Arm folds to 8" (20,3 cm)



StyleView HD Combo System

StyleView HD Combo Arm

Part # (color)	Universal CPU Holder (silver): 45-216-216 (white), available globally Universal CPU Holder (silver): 45-216-200 (black), available Americas, EMEA Vertical Small CPU Holder (black): 45-252-216 (white), available globally Vertical Small CPU Holder (black): 45-252-200 (black), available Americas, EMEA	45-215-216 (white), available globally 45-215-200 (black), available Americas, EMEA
	18" Extender Arm (optional) 45-255-216 (white), available globally 45-255-200 (black), available Americas, EMEA	18" Extender Arm (optional) 45-255-216 (white), available globally 45-255-200 (black), available Americas, EMEA
Includes	HD Combo Arm, 34" Wall Track with (2) black track covers, CPU Holder, (2) 10" cable channels, track anchor hardware kit, CPU and Arm track mount bracket kits, Wall Track fasteners for hollow walls/concrete/wood, CPU direct wall mount kit, height-adjustable LCD mount, wrist rest, scanner and mouse holders, integrated keyboard tray with left/right mouse tray, handle, VESA monitor mounting kit, cable ties	HD Combo Arm, Wall mount bracket, height adjustable LCD mount, wrist rest, scanner and mouse holder, integrated keyboard tray with left/right mouse tray, handle, VESA monitor mounting kit, cable ties
Typical LCD Size	≤ 24"	≤ 24"
LCD SIZE IS APPROXIMATION. DIMENSION IS DIAGONAL MEASUREMENT OF SCREEN. LCD SIZE MAY BE EXCEEDED AS LONG AS SCREEN WEIGHT DOES NOT EXCEED MAXIMUM WEIGHT CAPACITY OF THE MOUNT.		
Weight Capacity	Display 6–18 lbs (2,7–8,2 kg); keyboard, mouse and barcode scanner 5 lbs (2,3 kg)	Display 6–18 lbs (2,7–8,2 kg); keyboard, mouse and barcode scanner 5 lbs (2,3 kg)
Lift	LCD and keyboard adjusts 15" (38 cm) in tandem; LCD adjusts 5" (13 cm) independently; maximum LCD height adjustment 20" (51 cm)	LCD and keyboard adjusts 15" (38 cm) in tandem; LCD adjusts 5" (13 cm) independently; maximum LCD height adjustment 20" (51 cm)
Tilt	LCD 30° ↑ 25° / ↓ 5° Keyboard 10°	LCD 30° ↑ 25° / ↓ 5° Keyboard 10°
Pan	360°	360°
Rotation	360° Portrait to landscape screen rotation	360° Portrait to landscape screen rotation
VESA	MIS-D	MIS-D
Depth	Folds to 12" (30 cm)	Folds to 12" (30 cm)
Extension	≤ 39" (99 cm)	≤ 39" (99 cm)
Warranty	5 years	5 years



Not just for healthcare



See how you will benefit from our years of digital display mounting and mobility innovation in healthcare environments.
healthcare.ergotron.com



Smart point-of-care mounting and mobility solutions for your entire facility

Implement cost effective solutions while maintaining the highest standards of quality patient point-of-care. Ergotron is committed to manufacturing mount and mobility products packed with the features you need, helping you make the most of your EMR software and systems investments.



StyleView Vertical Lift Patient Room **StyleView Vertical Lift High Traffic Areas** **Vertical Lift Auto-Retracting Keyboard Kit**

Part # (color)	60-609-216 (white) 60-609-195 (black), available Americas	60-593-216 (white), available Americas 60-593-195 (black), available Americas	97-487-800 (black/white/grey), available Americas Vertical Lift High Traffic models only
Includes	Vertical Lift, slide out panning keyboard tray, mouse pad (built into keyboard tray) wrist rest, mouse pouch, mouse and scanner holder	Vertical Lift, mouse pad, wrist rest, mouse pouch	Keyboard tray lift assembly, wrist rest, multiple covers (grey, black, white), Velcro and adhesive strips
Optional Accessories: Vertical CPU Holder 97-468-202 (silver); Vertical Small CPU Holder 80-063-200 (black)			
Typical LCD Size	≤ 24"	≤ 24"	—
<small>LCD SIZE IS APPROXIMATION. DIMENSION IS DIAGONAL MEASUREMENT OF SCREEN. LCD SIZE MAY BE EXCEEDED AS LONG AS SCREEN WEIGHT DOES NOT EXCEED MAXIMUM WEIGHT CAPACITY OF THE MOUNT.</small>			
Weight Capacity	8–33 lbs (3,6–14,3 kg)	5–30 lbs (2,3–13,6 kg)	.75–2.5 lbs (0,34–1,13 kg)
Lift	9" (23 cm)	9" (23 cm)	—
Tilt	LCD 10° Back-tilt keyboard tray 10°	LCD 10° Back-tilt keyboard tray 10°	—
Pan	50° Display size may restrict motion Keyboard 120°	—	—
Rotation	—	—	—
VESA	MIS-D	MIS-D	—
Depth	Folds to 4.5" (11,4 cm)	Folds to 4" (10,2 cm)	—
Extension	18.8" (47,9 cm)	12" (30,5 cm)	—
Warranty	5 years	5 years	5 years



Superior ergonomics and maneuverability for the largest range of nurses

Our extensive line of Electronic Medical Record (EMR) and Patient Healthcare Delivery (PHD) StyleView carts leverage 20 years of experience in healthcare.



See "StyleView: Fit for Every Body" movies.ergotron.com



**Certified.
Lightweight.
Ultrafast recharge.
Long battery LiFe.**

LiFe

Why choose a StyleView Cart powered with Lithium Iron Phosphate (LiFe)?

Extremely lightweight and adjustable

The LiFe power system combines with StyleView's ergonomic adjustability to decrease caregiver fatigue and enhance overall wellness and productivity

Ultrafast recharge ensures caregiver and cart uptime

A full recharge from full discharge can be completed in around two hours for typical loads. Less charging = more caregiving!

Long battery 'LiFe' minimizes time and cost for maintenance and replacement

Proven to achieve thousands of cycles per lifetime and to last several years in a typical healthcare setting

Safe and certified

For patient and caregiver safety, the power module on all carts is certified to UL 60601-1. In addition, FULL power system and cart certification is complete for North America, and in progress for International SV42.

Includes FREE StyleLink with enterprise capabilities

Install, access and manage your StyleView power systems from a remote location across WAN, LAN, or VPN

Proven safe battery chemistry

Through extensive testing, Lithium Iron Phosphate is proven to be a very safe battery chemistry

		EMR Carts Electronic Medical Records			
		Non-powered		Powered: LiFe (Lithium Iron battery) OR SLA (Sealed Lead Acid battery)	
LCD Carts					
	①	②	③	④	
	EMR LCD Pivot Non-powered	EMR LCD Arm Non-powered	EMR LCD Pivot Powered	EMR LCD Arm Powered	
Laptop Carts					
	⑤	⑥	⑦		
	EMR SV40 Laptop Non-powered	EMR Laptop Non-powered	EMR Laptop Powered		

Attractive, lightweight and ergonomic, these carts meet the individual needs of the caregiver while supporting the application-specific needs of point-of-care.

PHD Carts Patient Healthcare Delivery

Non-powered

Powered: LiFe (Lithium Iron battery) OR
SLA (Sealed Lead Acid battery)



8

PHD LCD
Non-powered
1 drawer



9

PHD LCD
Powered
1 drawer



10

PHD LCD
Powered
2 drawer



11

PHD LCD
Powered
4 drawer



12

PHD LCD
Powered
6 drawer



13

PHD Laptop
Non-powered
1 drawer



14

PHD Laptop
Powered
1 drawer



15

PHD Laptop
Powered
2 drawer



16

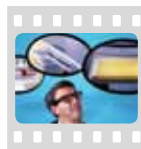
PHD Laptop
Powered
4 drawer



17

PHD Laptop
Powered
6 drawer

Improved workflow for nurses



See "StyleView: A Cart for Every Need" movies.ergotron.com

	Typical Size	Weight Capacity	Lift	Tilt	Pan	Rotation	VESA	
LiFe Powered	EMR LCD LiFe Powered	≤ 22"	≤ 29 lbs (13,2 kg)	Arm 27" (68,6 cm) Lift Pivot 25" (63,5 cm)	Arm 65° Lift Pivot 25°	Arm 180° Lift Pivot 24°	Arm 360° P/L Lift Pivot 90° P/L	MIS-D
	Includes one-battery 40 Ah power system, 10-foot coiled cord, two hospital-grade AC outlets, power system user interface, StyleLink™ software, secure CPU compartment							
	EMR Laptop LiFe Powered	≤ 17"	≤ 18 lbs (8 kg)	20" (51 cm)	—	—	—	—
EMR LiFe Cart features include worksurface, four-port USB hub, scanner holder bracket, mouse holder, wrist rest, back-tilt keyboard tray, left/right mouse tray, rear handle, storage basket, cable storage, four casters (two locking)								
Warranty: 5 years for cart, 2 years on all power supply components; 5 years on LiFe battery, including 2-year capacity guarantee								
SLA Powered	EMR LCD SLA Powered	≤ 22"	≤ 35 lbs (16 kg)	Arm 27" (68,6 cm) Lift Pivot 25" (63,5 cm)	Arm 65° Lift Pivot 25°	Arm 180° Lift Pivot 24°	Arm 360° P/L Lift Pivot 90° P/L	MIS-D
	Includes two-battery 66 Ah power system, 10-foot coiled cord, four hospital-grade AC outlets, power system user interface, StyleLink™ software, secure CPU compartment							
	EMR Laptop SLA Powered	≤ 17"	≤ 18 lbs (8 kg)	20" (51 cm)	—	—	—	—
EMR SLA Cart features include worksurface, four-port USB hub, scanner holder bracket, mouse holder, wrist rest, back-tilt keyboard tray, left/right mouse tray, rear handle, storage basket, cable storage, four casters (two locking)								
5-year warranty, excluding electrical/electronic components								
Non-Powered	EMR LCD Non-powered	≤ 22"	≤ 35 lbs (16 kg)	Arm 27" (68,6 cm) Lift Pivot 25" (63,5 cm)	Arm 65° Lift Pivot 25°	Arm 180° Lift Pivot 24°	Arm 360° P/L Lift Pivot 90° P/L	MIS-D
	Includes secure CPU compartment							
	EMR Laptop Non-powered	≤ 17"	≤ 18 lbs (8 kg)	20" (51 cm)	—	—	—	—
EMR Non-powered Cart features include worksurface, secure compartment, four-port USB hub, scanner holder bracket, mouse holder, wrist rest, back-tilt keyboard tray, left/right mouse tray, rear handle, storage basket, cable storage, four casters (two locking)								
5-year warranty								
See website for details								

	① EMR LCD Pivot Non-powered	② EMR LCD Arm Non-powered	③ EMR LCD Pivot Powered	④ EMR LCD Arm Powered	⑤ EMR SV40 Laptop Non-powered	⑥ EMR Laptop Non-powered	⑦ EMR Laptop Powered
LiFe US/Canada	—	—	SV42-42301 120V60Hz, 40Ah	SV42-42302 120V60Hz, 40Ah	—	—	SV42-42304 120V60Hz, 40Ah
US/Canada/Mexico	SV41-41021	SV41-41002	SV42-42201 120V60Hz, 66Ah	SV42-42221 120V60Hz, 66Ah	SV40-40004	SV41-41004	SV42-42402 120V60Hz, 66Ah
LiFe Europe	—	—	Available 2012	Available 2012	—	—	Available 2012
Europe	SV41-41021	SV41-41002	SV42-42203 230V50Hz, 66Ah	SV42-42223 230V50Hz, 66Ah	SV40-40004	SV41-41004	SV42-42404 230V50Hz, 66Ah
LiFe Ireland/United Kingdom	—	—	Available 2012	Available 2012	—	—	Available 2012
Ireland/United Kingdom	SV41-41021	SV41-41002	SV42-42205 230V50Hz, 66Ah	SV42-42225 230V50Hz, 66Ah	SV40-40004	SV41-41004	SV42-42406 230V50Hz, 66Ah
LiFe Hong Kong/Malaysia/Singapore	—	—	Available 2012	Available 2012	—	—	Available 2012
Hong Kong/Malaysia/Singapore	SV41-41021	SV41-41002	SV42-42205 230V50Hz, 66Ah	SV42-42225 230V50Hz, 66Ah	SV40-40004	SV41-41004	—
LiFe China	—	—	Available 2012	Available 2012	—	—	Available 2012
China	SV41-41021	SV41-41002	SV42-42209 230V50Hz, 66Ah	SV42-42229 230V50Hz, 66Ah	SV40-40004	SV41-41004	—
LiFe Australia/New Zealand	—	—	Available 2012	Available 2012	—	—	Available 2012
Australia/New Zealand	SV41-41021	SV41-41002	SV42-42207 230V50Hz, 66Ah	SV42-42227 230V50Hz, 66Ah	SV40-40004	SV41-41004	—
LiFe Japan	—	—	Available 2012	Available 2012	—	—	Available 2012
Japan	SV41-41021	SV41-41002	SV42-42213 100V50Hz, 66Ah	SV42-42233 100V50Hz, 66Ah	SV40-40004	SV41-41004	—
LiFe Saudi Arabia/EU	—	—	Available 2012	Available 2012	—	—	Available 2012
Saudi Arabia/EU	SV41-41021	SV41-41002	SV42-42217 230V60Hz, 66Ah	SV42-42237 230V60Hz, 66Ah	SV40-40004	SV41-41004	SV42-42418 230V60Hz, 66Ah
LiFe Saudi Arabia/UK	—	—	Available 2012	Available 2012	—	—	Available 2012
Saudi Arabia/UK	SV41-41021	SV41-41002	SV42-42211 230V60Hz, 66Ah	SV42-42231 230V60Hz, 66Ah	SV40-40004	SV41-41004	SV42-42412 230V60Hz, 66Ah

		Typical Size	Weight Capacity	Lift	Tilt	Pan	Rotation	VESA
Life OR SLA Powered	PHD LCD Powered	≤ 22"	≤ 39 lbs (17,7 kg)	25" (63,5 cm)	25°	24°	90° P/L	MIS-D
	Includes power system, 10-foot coiled cord, four hospital-grade AC outlets, power system user interface, StyleLink software, secure CPU compartment, 5" (13 cm) lift monitor pivot							
Non-Powered	PHD Laptop Powered	≤ 17"	≤ 23 lbs (10,4 kg)	20" (51 cm)	—	—	—	—
	Includes power system, 10-foot coiled cord, four hospital-grade AC outlets, power system user interface, StyleLink software, secure Laptop compartment							
Non-Powered	PHD LCD Non-powered	≤ 22"	≤ 39 lbs (17,7 kg)	25" (63,5 cm)	25°	24°	90° P/L	MIS-D
	Includes secure CPU compartment, 5" (13 cm) lift monitor pivot							
Non-Powered	PHD Laptop Non-powered	≤ 17"	≤ 23 lbs (10,4 kg)	20" (51 cm)	—	—	—	—
	Includes secure laptop compartment							
PHD Cart features include Auto-locking drawer system with 1, 2, 4, or 6 drawers, worksurface, four-port USB hub, scanner holder bracket, mouse holder, wrist rest, back-tilt keyboard tray, left/right mouse tray, rear handle, storage basket, cable storage, four casters (two locking)								
5-year warranty, excluding electrical/electronic components, see website for details								
See website for details								



Ergotron's innovative, truly ergonomic and easy-to-maneuver PHD healthcare carts offer caregivers simple, flexible and efficient non-controlled medication management at the point-of-care. Features include an auto-locking drawer system that lets caregivers choose the configuration that best meets their individual needs, sit-to-stand height adjustment, independent screen positioning and an adjustable back-tilt keyboard tray.

	Certification Standard	Certification Mark	Grounded Plug & Outlet
US	UL 60601-1	cTÜVus	North American NEMA 5-15P Hospital Grade
Canada	CAN/CSA C22.2 No. 601.1 M90	cTÜVus	North American NEMA 5-15P Hospital Grade
Mexico	—	—	North American NEMA 5-15P Hospital Grade
Europe	EN 60601-1	CE	European CEE 7
Ireland/ United Kingdom	EN 60601-1	CE	United Kingdom BS 1363
Hong Kong/ Malaysia/Singapore	IEC 60601-1	Not Applicable	United Kingdom BS 1363
China	IEC 60601-1	Not Applicable	GB2009-1 GB1002-1
Australia/ New Zealand	IEC 60601-1	C-Tick	Australian AS/NZS 3112
Japan	IEC 60601-1	Not Applicable	JIS 8303
Saudi Arabia (EMR SLA)	EN 60601-1	Not Applicable	United Kingdom BS 1363 / European CEE 7

StyleLink™

FREE!

Enterprise Management: **FREE** StyleLink Software secures access to drawers and allows remote monitoring/ configuration with established Microsoft tools

EXPERIENCE the difference with our **Global Service Program**
See complete details at www.ergotron.com

	8	9	10	11	12	13	14	15	16	17
	PHD LCD Non-powered 1 drawer	PHD LCD Powered 1 drawer	PHD LCD Powered 2 drawer	PHD LCD Powered 4 drawer	PHD LCD Powered 6 drawer	PHD Laptop Non-powered 1 drawer	PHD Laptop Powered 1 drawer	PHD Laptop Powered 2 drawer	PHD Laptop Powered 4 drawer	PHD Laptop Powered 6 drawer
Life US/Canada	—	SV32-51211 120V60Hz, 40Ah	SV32-51222 120V60Hz, 40Ah	SV32-51224 120V60Hz, 40Ah	SV32-51226 120V60Hz, 40Ah	—	SV32-51111 120V60Hz, 40Ah	SV32-51122 120V60Hz, 40Ah	SV32-51124 120V60Hz, 40Ah	SV32-51126 120V60Hz, 40Ah
US/Canada/Mexico	SV31-80211	SV32-91211 120V60Hz, 66Ah	SV32-91222 120V60Hz, 66Ah	SV32-91224 120V60Hz, 66Ah	SV32-91226 120V60Hz, 66Ah	SV31-80111	SV32-91111 120V60Hz, 66Ah	SV32-91122 120V60Hz, 66Ah	SV32-91124 120V60Hz, 66Ah	SV32-91126 120V60Hz, 66Ah
Europe	SV31-80211	SV32-92211 230V50Hz, 66Ah	SV32-92222 230V50Hz, 66Ah	SV32-92224 230V50Hz, 66Ah	SV32-92226 230V50Hz, 66Ah	SV31-80111	SV32-92111 230V50Hz, 66Ah	SV32-92122 230V50Hz, 66Ah	SV32-92124 230V50Hz, 66Ah	SV32-92126 230V50Hz, 66Ah
Ireland/ United Kingdom	SV31-80211	SV32-93211 230V50Hz, 66Ah	SV32-93222 230V50Hz, 66Ah	SV32-93224 230V50Hz, 66Ah	SV32-93226 230V50Hz, 66Ah	SV31-80111	SV32-93111 230V50Hz, 66Ah	SV32-93122 230V50Hz, 66Ah	SV32-93124 230V50Hz, 66Ah	SV32-93126 230V50Hz, 66Ah
Hong Kong/ Malaysia/Singapore	SV31-80211	SV32-93211 230V50Hz, 66Ah	SV32-93222 230V50Hz, 66Ah	SV32-93224 230V50Hz, 66Ah	SV32-93226 230V50Hz, 66Ah	SV31-80111	SV32-93111 230V50Hz, 66Ah	SV32-93122 230V50Hz, 66Ah	SV32-93124 230V50Hz, 66Ah	SV32-93126 230V50Hz, 66Ah
China	SV31-80211	SV32-95211 230V50Hz, 66Ah	—	SV32-95224 230V50Hz, 66Ah	—	SV31-80111	SV32-95111 230V50Hz, 66Ah	—	SV32-95124 230V50Hz, 66Ah	—
Australia/ New Zealand	SV31-80211	SV32-94211 230V50Hz, 66Ah	—	SV32-94224 230V50Hz, 66Ah	—	SV31-80111	SV32-94111 230V50Hz, 66Ah	—	SV32-94124 230V50Hz, 66Ah	—
Japan	SV31-80211	SV32-96211 100V50Hz, 66Ah	—	SV32-96224 100V50Hz, 66Ah	—	SV31-80111	SV32-96111 100V50Hz, 66Ah	—	SV32-96124 100V50Hz, 66Ah	—
Saudi Arabia/EU	SV31-80211	SV32-98211 230V60Hz, 66Ah	SV32-98222 230V60Hz, 66Ah	SV32-98224 230V60Hz, 66Ah	SV32-98226 230V60Hz, 66Ah	SV31-80111	SV32-98111 230V60Hz, 66Ah	SV32-98122 230V60Hz, 66Ah	SV32-98124 230V60Hz, 66Ah	SV32-98126 230V60Hz, 66Ah
Saudi Arabia/UK	SV31-80211	SV32-97211 230V60Hz, 66Ah	SV32-97222 230V60Hz, 66Ah	SV32-97224 230V60Hz, 66Ah	SV32-97226 230V60Hz, 66Ah	SV31-80111	SV32-97111 230V60Hz, 66Ah	SV32-97122 230V60Hz, 66Ah	SV32-97124 230V60Hz, 66Ah	SV32-97126 230V60Hz, 66Ah

StyleView Accessories



SV Dual Display Kit 97-574



StyleView Medical Drawer Tray Accessory 97-450



Coiled Extension Cord Accessory Kit 97-464 (Available North America)



Utility Shelf 97-507-216



SV Rear VESA Mount Kit 97-512-009



Universal CPU Holder 80-105-064



Large Utility Shelf 97-540-053



T-Slot Bracket 60-575-003



SV cart with small Sharps container and wall mount bracket attached via Ergotron's VESA Mount Kit 97-512-009



Universal Tablet Cradle 80-106-085



Interface Bracket Kit 60-587-207



StyleView IV Pole Clamp Kit 97-632



Medical-Grade Power Strip 97-466-214 (Available North America)



SV cart with scanner/printer placed on Ergotron's Large Utility Shelf 97-540-053 and attached with the T-Slot Bracket 60-575-003

StyleLink™

FREE!

FREE, industry-leading StyleLink Software with enterprise capabilities

StyleLink's three-part software package (Enterprise, Client, Graphing Tool) offers broad system and platform compatibility for global healthcare customers deploying Ergotron StyleView Carts with power.

Extend Asset Life Cycle

Optimizes balance between runtime and cycle life

Helps prevent deep discharging, which maximizes battery cycle life and minimizes battery replacement cost

Proactive Power System Management

Eliminate surprises through use of diagnostic tools, simplifying power system management and reducing time required to fix problems

Email alerts sent by each cart at different stages of battery life facilitate proactive power system management

Remote configuration: remotely configure or change email alerts, names, passwords and communication thresholds on each cart, or a group of carts, using your MS Network

Reduce Total Cost of Ownership

Reduce costs for maintenance; eliminate need for expensive onsite technical support by leveraging diagnostic capabilities. Simply email StyleLink's history data file to Ergotron Tech Support and they will help troubleshoot power system performance issues

Plan battery replacement based on custom views or email alerts, rather than being surprised by a (higher cost) replacement situation during caregivers' active work hours

Enterprise Capabilities

Remote enterprise monitor: access your carts across WAN, LAN, or VPN to get real-time information

Custom views: view those carts that meet your specific rules, e.g., carts unplugged, carts not connected, carts not reporting in the last 7 days, etc.

Group view: organize your carts into groups and subgroups. Set views for specific areas of your facilities; troubleshoot power system performance issues

Advanced Drawer Management

Each drawer individually controlled with PIN; program locally or remotely via enterprise

Drawer event log and report capability

Two points of console access for PIN updates: Unit Clerk or IT

Get real-time centralized control over mobile computing deployments across multi-facility healthcare campuses.



- Dynamic Icon**
 - Green/Yellow/Red
 - Corresponds to Charge Remaining
- Charge Remaining**
 - 0-100%
 - Color Coded to Match RUI
- Percent Load**
 - 0-100%
 - Color Coded to Show Preferred Load Range
- Power Source**
 - Line Mode
 - Battery Mode
 - Not Connected
- System Fault**
 - No Fault
 - Temperature High
 - Not Connected
- Time Remaining**
 - Hours, Minutes
 - No Load
 - Charging
- System Metrics In Real Time**
- Battery**
 - Good
 - Replace
 - Unknown
- Drawer**
 - Normal
 - Illegal Drawer Opening
 - Drawer Fault



No walls? No problem!



See "Tester Guy Tempts the Teacher"
movies.ergotron.com










Cart shown with optional Camera Shelf Kit 97-491-085



Cable shelf shown with optional Power Strip

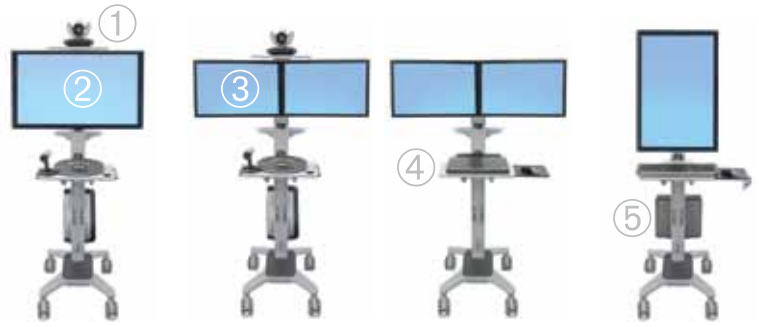


4" (10,2 cm) locking casters

Part # (color)	Light Duty 24-190-085 (black)	Very Heavy Duty 24-191-085 (black)	Ultra Heavy Duty 24-192-085 (black)
Optional Accessories: Camera Shelf Kit 97-491-085; 660/700/800 mm Kit 97-489; VESA CPU Kit 97-527-009			
 Typical LCD Size	27-55"	37-60"	50-70"
<small>LCD SIZE IS APPROXIMATION. DIMENSION IS DIAGONAL MEASUREMENT OF SCREEN. LCD SIZE MAY BE EXCEEDED AS LONG AS SCREEN WEIGHT DOES NOT EXCEED MAXIMUM WEIGHT CAPACITY OF THE MOUNT.</small>			
 Weight Capacity	25-50 lbs (11,4-22,7 kg)	50-90 lbs (22,7-40,9 kg)	90-120 lbs (40,9-54,4 kg)
	<small>Main shelf 30 lbs (13,6 kg); cable shelf 5 lbs (2,2 kg); if MMC Camera Shelf is added, display weight capacity is diminished by 3 lbs (1,4 kg); if 660/700/800 mm Accessory Kit is added the display weight capacity is diminished by 5 lbs (2,2 kg)</small>		
 Lift	20" (51 cm)	20" (51 cm)	20" (51 cm)
 Tilt	20°	20°	20°
 Pan	—	—	—
 Rotation	90° Portrait to landscape screen rotation. See website for details	90° Portrait to landscape screen rotation. See website for details	90° Portrait to landscape screen rotation. See website for details
 VESA	MIS-D/E/F See website for details	MIS-D/F See website for details	MIS-D/F See website for details
Warranty	3 years	3 years	3 years

Many configuration options

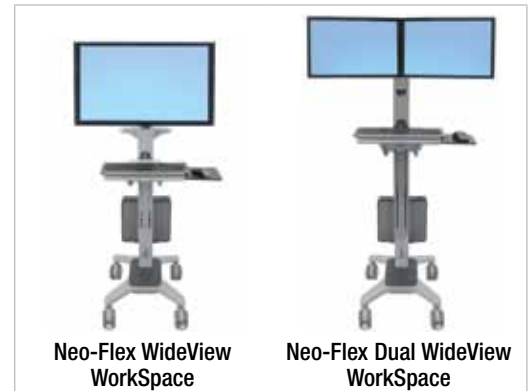
- ① Optional Wideview Camera Shelf Kit 97-500-055
 - ② Mid-sized LCD mount
 - ③ Dual-display crossbar and LCD mounts
 - ④ Integrated worksurface/keyboard tray with left/right mouse tray
 - ⑤ CPU Holder
- Check website for regional availability



Video conference with remote staff or customers to help reduce costs while improving the customer experience.



Tuck cart away when not in use.



Part # (color)	24-189-055 (two-tone grey), available Americas	24-194-055 (two-tone grey)
Optional Accessories: WideView Camera Shelf Kit 97-500-055 (grey)		
Typical LCD Size	≤ 40"	two ≤ 22"
<small>LCD SIZE IS APPROXIMATION. DIMENSION IS DIAGONAL MEASUREMENT OF SCREEN. LCD SIZE MAY BE EXCEEDED AS LONG AS SCREEN WEIGHT DOES NOT EXCEED MAXIMUM WEIGHT CAPACITY OF THE MOUNT.</small>		
Weight Capacity	LCD capacity 16–30 lbs (7,3–13,6 kg) Maximum load on height-adjustment assembly 40 lbs (18 kg). Includes weight of display in addition to contents on Worksurface and in Cable Storage Box. Display weight capacity is diminished by 5 lbs (2,3 kg) plus weight of camera with Camera Shelf Kit.	LCD capacity 6–14 lbs (2,7–6,4 kg) per mount, 12–28 lbs (5,4–12,7 kg) for both displays
Lift	20" (51 cm)	20" (51 cm)
Tilt	30°	Install dual displays at 3.5° or 8.5° upward angle for optimized viewing conditions. Dual displays are not tilt adjustable
Pan	—	—
Rotation	90°	90°
VESA	MIS-D/E/F See website for details	MIS-D
Warranty	3 years	3 years



Mobile computing for anywhere you want to go

Designed for manufacturing floors, clinical documentation, labs, distribution centers, and high activity areas, the lightweight streamlined Neo-Flex Cart transforms any space into a productive sit-stand computing environment. Creating an optimal platform for true point-of-need data input, the Neo-Flex Cart helps improve viewing comfort, increase user accuracy and productivity while supporting wireless initiatives in any facility.



Suggested accessories:
 NF Cart Handle and Basket Kit 97-545 (grey)
 Universal CPU Holder 80-105-064 (dark grey)
 NF Cart Wire Basket Kit 97-544
 NF Cart Laptop Vertical Kit 97-546



Part # (color)	24-206-214 (two-tone grey)	24-205-214 (two-tone grey)
Includes	LCD arm, integrated worksurface/keyboard tray with left/right mouse tray, scanner holder bracket, mouse holder, cable storage area, four dual casters (two locking), quick-release VESA-CPU mount	Integrated worksurface/keyboard tray with left/right mouse tray, scanner holder bracket, mouse holder, cable storage area, four dual casters (two locking), laptop security system
Typical LCD Size	≤ 24"	Notebook 13-17"
<small>LCD SIZE IS APPROXIMATION. DIMENSION IS DIAGONAL MEASUREMENT OF SCREEN. LCD SIZE MAY BE EXCEEDED AS LONG AS SCREEN WEIGHT DOES NOT EXCEED MAXIMUM WEIGHT CAPACITY OF THE MOUNT.</small>		
Weight Capacity	≤ 26 lbs (11,8 kg)	Total maximum load on height-adjustment assembly 15 lbs (6,8 kg). Includes contents of laptop worksurface and cable storage area
Lift	LCD and worksurface adjust 20" (51 cm) in tandem; LCD Arm adjusts 7" (17,8 cm) independently; maximum LCD height adjustment 27" (68 cm)	≤ 20" (51 cm)
Tilt	65°	—
Pan	180°	—
Rotation	360° Portrait to landscape screen rotation Portrait screen orientation may be incompatible with widescreen displays > 19"	—
VESA	MIS-D	—
Warranty	3 years	3 years



Improve efficiency, increase production

Outfit an entire facility to support your lean manufacturing initiatives. Ergotron manufactures computing mounts that are secure and rugged to help protect your hardware investment while ergonomic designs help ensure employees' health. That's real-time adjustability and mobility to help extend staff and capital resources.

Differentiation

Instant adjustability facilitates better Electronic Work Instruction (EWI) by bringing data to where individual operators need it most.

Efficiency

Studies show significant productivity increases where employees are provided with well-designed ergonomic workstations.

Return

Modular and mobile products occupy little or no floor space; easily configure or reconfigure to meet a wide range of worker or application needs.



See how Ergotron products are used every day.
Industrial Interactive Virtual Tour
www.ergotron.com



OEM opportunities

Using our proprietary technology, Ergotron serves OEM customers that are among the world's largest selling brands. Our China facility performs 100% end-of-line testing, life-cycle testing on each lot, and other in-process tests that ensure the highest quality products.

Environmentally responsible

Your Ergotron mounting solution complies with all international environmental regulations related to its design, manufacture and packaging.



Manufacturing excellence

Certified to ISO 9001:2008. This certification demonstrates Ergotron's commitment to employing best practice procedures in our facilities.

Quality tested

Our products undergo a testing regimen that is unmatched in the industry. Ergotron strives to provide the highest levels of trouble-free field performance and unsurpassed product longevity, delivering peace of mind to both resellers and customers.



Wellness. Productivity. Balance. **Feel the difference.**



Industry compliant
 Ergotron video display mounts are compliant with mounting interface standards set by the Video Electronics Standards Association (VESA).

Display Compatibility Guide

VESA	LCD Size	LCD Weight	Hole Mounts
MIS-B	4-7.9" 10,2-20,1 cm	≤ 4.4 lbs ≤ 2 kg	50 x 20 mm
MIS-C	8-11.9" 20,3-30,2 cm	≤ 10 lbs ≤ 4,5 kg	75 x 35 mm
MIS-D	12-22.9" 30,5-58,3 cm	≤ 30,8 lbs ≤ 14 kg	75 x 75 mm 100 x 100 mm
MIS-E	23-30.9" 58,4-78,6 cm	≤ 50 lbs ≤ 22,7 kg	200 x 100 mm
MIS-F	≥ 31" ≥ 78,7 cm	N/A	200 mm increments

LCD Size in all charts is approximation only. Use LCD Weight as guide for choosing mounting solution; exact capacity depends on thickness of display. Hole Mounts are width x height. Compatibility is predicated on the assumption that displays are VESA compliant (hole mount is centered on display's center of gravity.)



Learn more about Ergotron's Ergonomic Equation and all the tools that will help you reach the zone, including:

- Top 10 tips and The Ergonomic Equation
- Workspace Planner tool
- Payback Calculator for an ergonomic workspace
- Comfortable computing white papers

Notebook ergonomics

If computing for longer than an hour or two, take the following steps for ergonomic wellness: elevate your laptop so you can see the screen without bending your neck; connect a separate keyboard and place it where wrists are flat while shoulders and elbows are relaxed; pay attention to your posture. For a quick solution, check out our Neo-Flex Notebook Lift Stand.



Accessories



Universal Tablet Cradle
80-106-085 (black)
Includes tablet cradle, sliding bracket, attachment hardware



Wall Track 10" L (25 cm)
31-016-182
Wall Track 26" L (66 cm)
31-017-182
Wall Track 34" L (86 cm)
31-018-182
Wall Track 42" L (107 cm)
31-039-182
(Available N. America)



Wall Plate 97-101-003
(aluminum)
Use with 100 or 200 Series, LX Arms or CPU Holders to add extra support



Large Utility Shelf (grey)
97-540-053
This secure and sturdy shelf supports projectors, printers and other small peripherals

VESA Adaptor Kit
100 x 200, 200 x 200, 400 x 200 mm
97-474 (steel)



Quick Release LCD Bracket
60-589-060 (black)
Allows for quick removal and connection of displays to an Ergotron arm, stand or wall mount

Track Bracket
for 200 Series or LX Arm
97-091 (aluminum)
for CPU Holders
60-156 (aluminum)

Fasteners for Wall Track for wood or metal studs
97-531
(Available N. America, EMEA)
for hollow walls 90-011
(Available N. America, EMEA)



Vertical Small CPU Holder
80-063-200 (black)
Attach directly to wall, or use with Wall Track (requires 60-156) or Wall Plate (Available N. America, EMEA).
Size range: 1 1/2" to 3 1/4" (3,5-9,5 cm) wide; accommodates most small form factor and ultra small form factor CPUs



Vertical Universal CPU Holder
97-468-202 (silver)
Attach directly to wall, or use with Wall Track (requires 60-156) or Wall Plate.
Size range: 2-8" (5-20 cm) wide; includes plastic spacer to accommodate most small form factor and ultra small form factor CPUs



LX Extension
45-289-026 (polished aluminum)
Add a second extension to your LX Arm and increase its reach by 9" (23 cm). Only one additional extension is allowed per configuration. Extension cannot be added to Dual Desk Mount Arms (45-245-026, 45-248-026)

See website for complete general accessories list



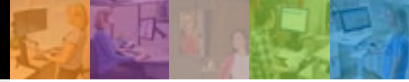
Ergotron Service Program

Save time and money by allowing the experts to install and service Ergotron products

- Improve asset management and extend asset life cycle
- Reduce maintenance costs
- Safeguard operational efficiencies and maintain uptime
- Resolve potential problems in a timely manner
- Free up valuable resources to focus on your business
- Maximize product life and achieve optimum product conditioning, reducing total cost of ownership

StyleView Carts	Part Number North America/APAC	Part Number EMEA	Power	Carts Per Site
Site Readiness	SRVC-SR-01	SRVCE-SR-01	—	—
Integration	SRVC-CINP-01A	SRVCE-CINP-01A	Non-powered	10-99
	SRVC-CINP-01B	SRVCE-CINP-01B	Non-powered	100+
	SRVC-CIP-01A	SRVCE-CIP-01A	Powered	10-99
	SRVC-CIP-01B	SRVCE-CIP-01B	Powered	100+
Preventive Maintenance, 3 Year	SRVC-PMNP-03	SRVCE-PMNP-03	Non-powered	10+
	SRVC-PMP-03	SRVCE-PMP-03	Powered	10+
Preventive Maintenance, One Visit	SRVC-PMPNO-01	SRVCE-PMPNO-01	—	10+
Integration & Preventive Maintenance, 3 Year Combines Integration and 3-Year Preventive Maintenance	SRVC-ANP-03A	SRVCE-ANP-03A	Non-powered	10-99
	SRVC-ANP-03B	SRVCE-ANP-03B	Non-powered	100+
	SRVC-AP-03A	SRVCE-AP-03A	Powered	10-99
	SRVC-AP-03B	SRVCE-AP-03B	Powered	100+
SLA to LiFe Power System Conversion	SRVC-LiFeC-SV32 SRVC-LiFeC-SV42 (US and Canada only)	—	Powered	10+
Battery Replacement	SRVC-BR-33	—	33 amp/hr SLA batteries	—
Complete Service, 3 Year Combines Integration and 3-Year Preventive Maintenance	SRVC-COMP-03 (US and Canada only)	—	Powered	10+
StyleLink Remote Analysis	SRVC-STYLK-01	SRVCE-STYLK-01	—	—
Non StyleView Carts	Part Number North America/APAC	Part Number EMEA	Tier	Units Per Site
Product Integration	SRVC-PI-01	SRVCE-PI-01	1	25+
	SRVC-PI-02	SRVCE-PI-02	2	10+
	SRVC-PI-03	SRVCE-PI-03	3	10+
Tablet Management Carts	Part Number North America/APAC	Part Number EMEA	Power	Units Per Site
Conversion to Three-Module	SRVC-TMC-01	SRVCE-TMC-01	Powered	5+
Any Ergotron Product or Any Non-Ergotron Cart Product	Part Number North America/APAC	Part Number EMEA	Tier	Units Per Site
Product Recycling Includes Freight	SRVC-RCYL-F (US and Canada only)	—	—	10+
Product Recycling Customer Pays Freight	SRVC-RCYL-NF (US and Canada only)	—	—	—





Join the Uprising! Just Stand.

Research shows sitting too much is unhealthy; unfortunately, standing all day isn't practical.

ANSWER: Get an affordable Sit-Stand workstation and move freely between sitting and standing throughout the day. You'll burn extra calories, tone muscles, improve posture, ramp up your metabolism and be more productive!



twitter

YouTube

facebook



© 2011 Ergotron, Inc. rev. 12/06/2011 870-01-021-EA **Content is subject to change without notification**
Some products may not be available in some regions of the globe – visit our website for more information

**Americas Sales and
Corporate Headquarters**

St. Paul, MN USA
(800) 888-8458
+1-651-681-7600
www.ergotron.com
sales@ergotron.com

EMEA Sales

Amersfoort, The Netherlands
+31 33 45 45 600
www.ergotron.com
info.eu@ergotron.com

APAC Sales

Tokyo, Japan
www.ergotron.com
apaccustomerservice@ergotron.com

Worldwide OEM Sales

www.ergotron.com
info.oem@ergotron.com